



ORIGINAL ARTICLE

Endoscopic Submucosal Dissection of Gastric Superficial Lesions: Predictors for Time of Procedure in a Portuguese Center



Francisco Ribeiro-Mourão^{a,*}, Nuno Veloso^{a,b}, Mário Dinis-Ribeiro^{a,b}, Pedro Pimentel-Nunes^{a,b,c}

^a CINTESIS/CIDES, Faculdade de Medicina do Porto, Porto, Portugal

^b Gastroenterology Department, Instituto Português de Oncologia do Porto Francisco Gentil, Porto, Portugal

^c Physiology Department, Faculdade de Medicina do Porto, Porto, Portugal

Received 11 October 2014; accepted 26 January 2015

Available online 20 March 2015

KEYWORDS

Dissection;
Endoscopy,
Gastrointestinal;
Operative Time;
Stomach Neoplasms

Abstract

Background: Endoscopic submucosal dissection (ESD), an endoscopic technique used for treatment of gastric superficial lesions, has been gaining importance on western countries. Procedural times have an impact on various outcomes.

Aim: To define which factors from patients, lesions and procedure can predict longer procedural times.

Methods: In a cohort of 127 lesions resected by ESD with IT-knife, after using needle-knife for submucosal layer access, by experienced gastroenterologists, characteristics from the patient (age, gender, presence of co-morbidities, usage and suspension of anti-platelet drugs and general physical condition), lesion (size, histopathological diagnosis at biopsy, location, macroscopic type and submucosal invasion) and procedure (adverse events) were retrospectively analyzed for its impact on time of procedure. Univariate and multivariate analysis were performed.

Results: Lesions larger than 20 mm ($p < 0.001$), on the upper third of the stomach ($p = 0.035$) and with an ASA score of 3 ($p = 0.031$) were considered influential factors for a longer procedure time and specifically for a time of procedure longer than 90 min. Existence of intra-procedure adverse events was also a predictor for a procedure time > 90 min. Lesion's size > 20 mm and location in the upper third were independently associated with a procedure time longer than 90 min (OR 4.91 [95%CI 2.29–10.50] and OR 18.26 [95%CI 2.02–164.78], respectively).

* Corresponding author.

E-mail addresses: mimed08082@med.up.pt, franciscoribeimourao@gmail.com (F. Ribeiro-Mourão).

Conclusion: The time of procedure of ESD for gastric superficial lesions is influenced by size of lesion (>20 mm) and location (upper third of stomach), which predict a time longer than 90 min. This can be useful for better management of workflow, operation, training of teams and anesthetic procedures.

© 2014 Sociedade Portuguesa de Gastreenterologia. Published by Elsevier España, S.L.U. This is an open access article under the CC BY-NC-ND license (<http://creativecommons.org/licenses/by-nc-nd/4.0/>).

PALAVRAS-CHAVE

Disseção;
Endoscopia
Gastrointestinal;
Neoplasias do
Estômago;
Tempo de
Procedimento

Disseção Endoscópica da Submucosa de Lesões Superficiais Gástricas: Preditores do Tempo de Procedimento num Centro Português

Resumo

Introdução: A Disseção Endoscópica de Submucosa (ESD), uma técnica utilizada para o tratamento de lesões gástricas superficiais, tem ganho importância no Ocidente. O tempo de procedimento tem impacto nos *outcomes*.

Objetivo: Definir os fatores do paciente, da lesão e do procedimento que predizem um tempo de procedimento prolongado.

Métodos: Numa coorte de 127 lesões removidas por ESD com *IT-knife*, após utilização de *needle-knife* para acesso à camada submucosa, por gastreenterologistas experientes foram analisadas, retrospectivamente, características dos pacientes (idade, género, presença de co-morbilidades, toma/suspensão de agentes anti-plaquetários e condição física), das lesões (tamanho, diagnóstico histopatológico na biopsia, localização, características macroscópicas e invasão submucosa) e do procedimento (complicações). Foi realizada análise univariada e multivariada.

Resultados: Lesões >20 mm ($p<0,001$), no terço superior do estômago ($p=0,035$) e em pacientes com um índice ASA 3 ($p=0,031$) foram considerados como fatores com influência para tempo de procedimento prolongado e, especificamente, para um tempo de procedimento superior a 90 minutos. A existência de complicações intra-procedimento também foi considerada como um preditor para um tempo >90 minutos. Uma lesão >20 mm e a localização no terço superior estiveram associadas independentemente com um tempo de procedimento superior a 90 minutos (OR 4.91 [IC 95% 2.29-10.50] e OR 18.26 [IC 95% 2.02-164.78], respetivamente)

Conclusões: O tempo de procedimento da ESD para lesões superficiais gástricas é influenciado pelo tamanho e localização das lesões, sendo preditores de um tempo de procedimento superior a 90 minutos. Estes dados são importantes para melhor gestão da dinâmica de trabalho, procedimento, formação das equipas e procedimentos anestésicos.

© 2014 Sociedade Portuguesa de Gastreenterologia. Publicado por Elsevier España, S.L.U. Este é um artigo Open Access sob a licença de CC BY-NC-ND (<http://creativecommons.org/licenses/by-nc-nd/4.0/>).

1. Introduction and background

Endoscopic submucosal dissection (ESD) is an endoscopic technique used for treatment of gastric superficial lesions.¹ It has been widely used in countries such as Korea and Japan, but its use only widespread in the Western countries in the last decade.² Although having successful results,³⁻⁵ ESD requires a high level of expertise in order to reach the desired outcomes.⁶⁻⁷

Specifically, longer procedural times are related to a higher level of adverse events⁸ such as delayed bleeding,⁹ perforation,¹⁰⁻¹¹ post-operative pneumonia¹¹⁻¹³ and other clinical adverse events related to premedication and a heavy workload for patients.⁷ Moreover, previous retrospective studies have shown that time of procedure can be influenced by different factors such as existence of fibrosis,¹⁴⁻¹⁵ presence of ulceration,^{7,15-17} area of the resected specimen,^{7,16-19} location on the upper portion

of the stomach,^{7,16-19} adhesion¹⁹ and presence of a scar.⁷ Therefore, it is essential to take these factors into account in the pre-operative period, since they can influence the workflow for ESD such as allocation of type of rooms and anesthetic procedures, and level of training of teams.¹¹

Considering this impact of procedure time, the present work aims at addressing the procedure time of ESD for removal of superficial gastric lesions and to define which patients' characteristics, lesions' features and procedure variables may be predictors of longer procedural times.

2. Materials and methods

2.1. Type of study and selection of patients

Our study reports a retrospective cohort of 162 consecutively patients (with 195 gastric neoplastic lesions) that

were referred to the Portuguese Institute of Oncology – Porto (IPO) from March 2003 to April 2013 for assessment and treatment of gastric superficial neoplasias. This study was conducted in accordance with the ethical principles of the Declaration of Helsinki, in compliance with good clinical practice.

All patients were referred for endoscopic treatment after a multidisciplinary oncology group decision and full medical and anesthesiology evaluation. Both oral and written informed consent was given by patients. All the endoscopic procedures performed on IPO during this period were screened by their report on the institute database, followed by analysis of the clinical record of the patient.

Results related with other outcomes regarding the long-term follow-up of this cohort, that are outside the aim of this analysis, were already published by our team.²⁰

Flowchart followed for patients' selection can be found in Fig. 1. For the purpose of this study, only cases treated by ESD, without ulcerative findings on the lesion, and technically performed with IT-knife were selected. Fifty-three

procedures were excluded because they were treated by endoscopic mucosal resection (EMRc). Of the ESD procedures, one was excluded because Flex-knife was used along with IT knife, six were excluded because diathermic loop was used along with IT-knife and two were excluded because we used a hybrid technique (ESD followed by EMRc). Six procedures were excluded due to incomplete information regarding time of procedure.

2.2. Description of endoscopic resection techniques

Two operators effectuated the endoscopic procedures (MDR and PPN). MDR received training in Japan and in live animal courses before introducing the technique in the Hospital. PPN had animal training and then gradually began the endoscopic procedures under MDR supervision in 2010.²¹⁻²²

Lateral margins of each lesion were always determined by chromoendoscopy with indigo carmine 1%²³⁻²⁵ or with

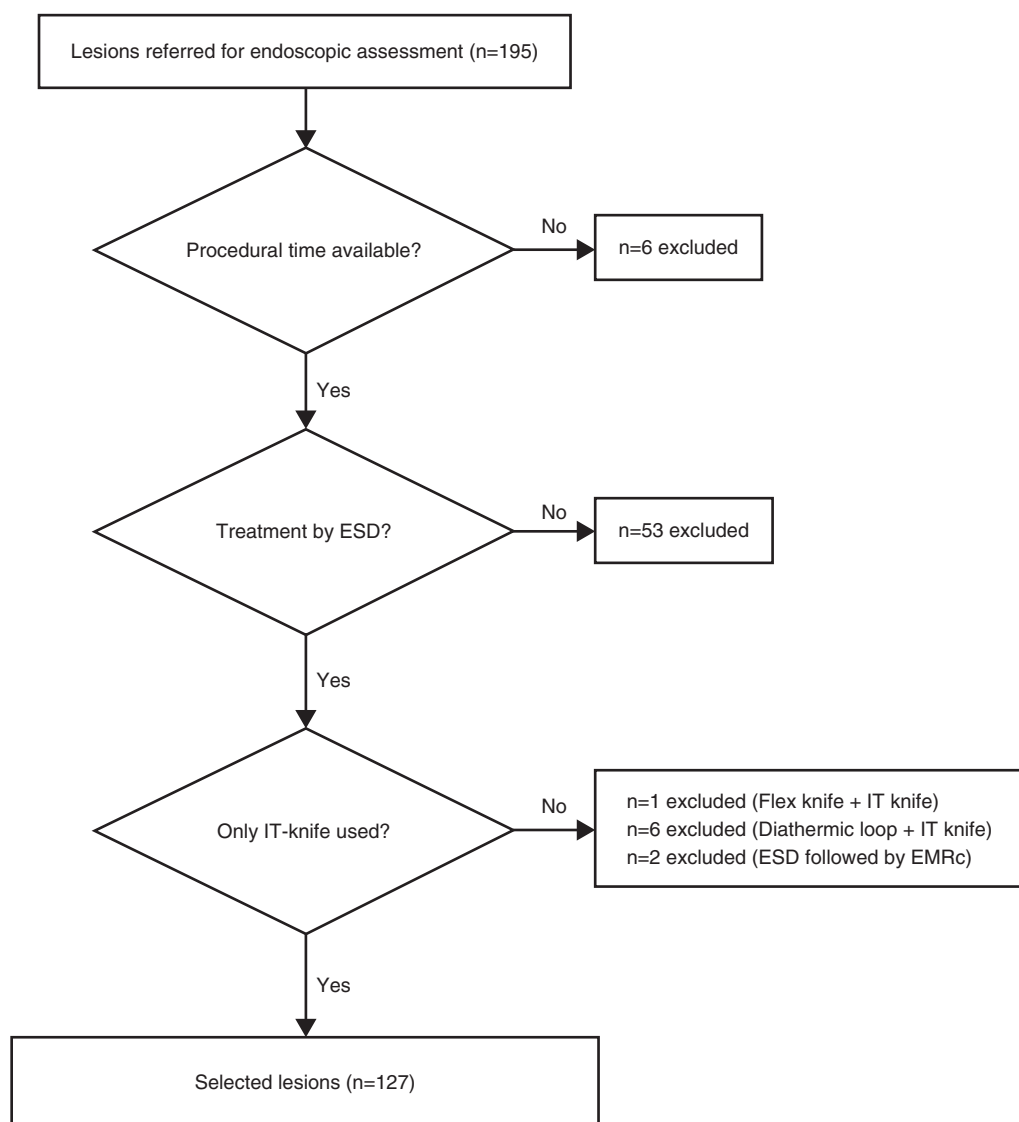


Figure 1 Flowchart for patients inclusion in the study.

virtual chromoendoscopy using HR-NBI (applying Pimentel-Nunes et al. classification for delimitation of lesions²⁶) and small marks were made 2–5 mm from the edges of the lesion using needle-knife coagulation. The technique of endoscopic submucosal dissection (ESD) was initiated after the submucosal injection of the lesion with an epinephrine and saline solution (1:100,000) and a few drops of methylene blue. After that to obtain access to the submucosal layer 3–4 small mucosal incisions using needle-knife were made. Then, an IT-knife (Olympus, model KD-610L) in the endocut mode was used to do the circumference of the lesion outside the coagulation markers. Complete dissection of the lesion was performed using endocut mode (Olympus electrosurgical unit HF-120, 80/60 W) with further submucosal injections as needed being made throughout the procedure. CO₂ insufflation was not used as it is not available at our center.

All procedures were performed under deep sedation or general anesthesia (with propofol and fentanyl) supervised by an anesthesiology team.

2.3. Definitions: procedural time and potential predictive factors

Procedural time was defined as the time of anesthesia, in minutes, reported in patients' clinical files by the anesthesiology team. Thereafter, two groups were created according to a time shorter or longer than 90 min of procedure given that the median time of all the procedures was 85 min.

In order to determine the influential factors on procedure time the following variables were analyzed:

- *Regarding the lesion:* Gross cross-sectional dimension of the lesion at the diagnostic procedure (measured endoscopically) in millimeters, followed by sub-grouping in lesions ≤ 20 mm (absolute indication for endoscopic resection on differentiated lesions without ulcerative findings²⁷) and >20 mm, histopathological findings at diagnostic biopsy (low-grade dysplasia, high grade dysplasia or T1a), location (upper, middle and lower third of the stomach), macroscopic type (organized by Paris classification,²⁸ followed by sub-grouping in depressed and non-depressed lesions) and histopathological definitive classification defined by the presence or absence of submucosal invasion.
- *Regarding the patient:* Age, gender, presence of comorbidities, previous suspension of anti-platelet drugs and general condition of the patient, evaluated by the American Society of Anesthesiology score (ASA 1, 2, 3, 4 or 5).²⁹
- *Regarding the procedure:* Type of anesthesia (sedation vs general anesthesia); existence (and type) of adverse events; adverse events were defined as: perforation was defined as mesenteric fat or intra-abdominal space visible through the gastric wall during the procedure and/or postprocedural clinical and imagiologic signs of peritonitis due to perforation; bleeding was only considered as an adverse event when a procedural bleeding could not be managed without endoclips (significant intraprocedure bleeding) or required surgery and/or transfusion of red blood cells (acute bleeding) or as a postoperative

bleeding with a decrease of the hemoglobin level more than 2 g/dL and/or need for blood transfusions, endoscopic or surgical intervention because of hematemesis or melena (delayed bleeding).

2.4. Comparison with previous studies

For the purpose of comparison with previous studies we applied the formula developed by Goto et al.,¹⁶ for prediction of time of procedure: predictive procedural time (min) = $2.384 \times (\text{tumor size, mm}) + 38.568 \times (\text{location}) + 40.333 \times (\text{ulcerative findings})$ [location in the upper-third of the stomach, 1; the middle or the lower third of the stomach, 0; presence of ulcerative findings, 1; and the absence of ulcerative findings, 0].

2.5. Statistical analysis

Statistical Package for Social Sciences (SPSS 21.0 Package Facility, SPSS Inc., IL, USA) was used for data support and analysis. Analysis was performed using descriptive statistics methods, as well as Kruskal–Wallis test for analysis with time (when analyzed as a continuous variable), and Chi-square and Fisher's exact test for analysis of dichotomic variables (including time more or less than 90 min as a dichotomic variable). Logistic regression was used to estimate OR for individual variables in multivariate analysis. A value of $p < 0.05$ was considered to be statistically significant. Pearson's test was used for linear regression correlation analysis.

3. Results

3.1. Characteristics of lesions and procedure

Of the 127 lesions, 55% were performed on male patients with an average age of 69 (± 10.9) years old and a median of 71 (IQR 61–77). Eight (6%) lesions were located on the upper third, 27 (21%) on the middle third and 92 (72%) were located on the lower third. The median time of procedure was of 85 min (IQR 55–130). The median lesion size was of 20 mm (IQR 15–30). Globally, 93% of the lesions were resected *en bloc* with R0 achieved in 91% of the cases. Adverse events (bleeding) occurred in 13% of the procedures.

3.2. Factors predictive of ESD procedure time

Tumor size, location and the ASA score were significantly associated with procedure time (Table 1). Specifically, a procedure for a lesion >20 mm, located at the upper third of the stomach and in a patient with an ASA of three were associated with longer procedure time, with results significantly different from the other characteristics on the same group. Other patients', lesions' and characteristics of procedure are shown in Table 1.

Procedures were furthermore analyzed in two different groups – those taking less than and those taking more than 90 min. These results are consistent with the findings on the previous analysis, as the majority of the cases (72%) with a lesion ≤ 20 mm lasted 90 min or less, while the majority of the cases with a lesion >20 mm (66%) lasted for more than

Table 1 Characteristics of patients, lesions and procedure with univariate analysis for predictors of longer procedure time and procedure time greater than 90 min. $p < 0.05$ was considered as statistically significant.

Characteristics	n	Time				
		Median (IQR)	p value	<90 min	>90 min	p value
<i>Procedures (total)</i>	127	85 (55–130)				
<i>Gender</i>			0.443			
Male	70	97.5 (50–140)		34 (49%)	36 (51%)	0.065
Female	57	80 (60–120)		37 (65%)	20 (35%)	
<i>Age^a</i>	71 (61–77)		0.705			
≤65	42	85 (43.75–121.25)		25 (60%)	17 (40%)	0.564
>65	85	90 (60–140)		46 (54%)	39 (46%)	
<i>ASA</i>			0.011*			
ASA 1	31	65 (40–95)		23 (74%)	8 (26%)	0.031*
ASA 2	71	90 (55–130)		38 (54%)	33 (46%)	
ASA 3	25	120 (62.50–165)		10 (40%)	15 (60%)	
<i>Co-morbidities</i>			0.125			
Yes	92	90 (30–112.75)		47 (51%)	45 (49%)	0.076
No	35	72.5 (55–140)		24 (69%)	11 (31%)	
<i>Anti-platelets</i>			0.153			
Yes	25	105 (60–187.5)		12 (48%)	13 (52%)	0.374
No	102	85 (48.75–126.25)		59 (58%)	43 (42%)	
<i>Suspension of anti-platelets</i>			0.764			
Yes	14	117.5 (60–200)		5 (36%)	9 (64%)	0.416
No	8	102.5 (52.50–201.25)		4 (50%)	4 (50%)	
<i>Size of lesion</i>			<0.001			
≤20 mm	74	65 (45–110)		53 (72%)	21 (28%)	<0.001
>20 mm	53	120 (80–147.5)		18 (34%)	35 (66%)	
<i>Histopathology at biopsy</i>			0.521			
LGD	40	75 (46.25–125)		26 (65%)	14 (35%)	0.367
HGD	57	90 (52.50–137.50)		29 (51%)	28 (49%)	
Adenocarcinoma	30	90 (60–130)		16 (53%)	14 (47%)	
<i>Type of lesion</i>			0.891			
Naive	121	85 (55–130)		68 (56%)	53 (44%)	0.542
Recidive	6	95 (29.75–156)		3 (50%)	3 (50%)	
<i>Location</i>			0.022**			
Upper third	8	145 (115–253.75)		1 (12%)	7 (88%)	0.035**
Middle third	27	90 (60–180)		15 (56%)	12 (44%)	
Lower third	92	80 (46.25–120)		55 (60%)	37 (40%)	
<i>Macroscopic features</i>			0.833			
Depressed lesions	60	87.5 (60–130)		36 (60%)	24 (40%)	0.379
Non depressed lesions	67	85 (45–140)		35 (52%)	32 (48%)	
<i>Submucosal invasion</i>			0.289			
Yes	14	115 (72.5–135)		6 (43%)	8 (57%)	0.297
No	113	85 (52.50–130)		65 (58%)	48 (42%)	
<i>Adverse events</i>			0.069			
Yes	17	130 (50–200)		5 (29%)	12 (71%)	0.018
No	110	84 (53.75–122.75)		66 (60%)	44 (40%)	

IQR, interquartile range; min, minutes; LGD, low-grade dysplasia; HGD, high-grade dysplasia.

Bold signifies statistically significant values.

* Statistically significant for comparison between ASA1 and ASA3.

** Statistically significant for comparison between upper third and lower third.

^a Median age (IQR).

90 min ($p < 0.001$). Also, lesions located on the upper third took more than 90 min (88%), compared to lesions at other locations ($p < 0.035$) and gross majority of lesions in patients with ASA1 took less than 90 min to remove (74%) while lesions on patients with ASA 3 took more than 90 min on 60% of the cases ($p = 0.031$). Moreover, this analysis also shows that intra-procedure adverse events pushed the procedure time to more than 90 min as 71% of the procedures with adverse events took more than 90 min ($p = 0.018$). Characteristics with a statistically significant difference at univariate analysis ($p < 0.05$) were then computed for multivariate analysis (Table 2). Those patients harboring lesions larger than 20 mm and located to the upper third showed an increased risk of 4.91 times [95%CI 2.29–10.50] and 18.26 times [95%CI 2.02–164.78], respectively and independently with $p < 0.05$. The occurrence of adverse events during the procedure and the ASA score do not seem to be independently predicting procedural time longer than 90 min. Furthermore, type of anesthesia did not influence procedure time.

Trends for time of procedure according to lesion's size and location can be found in Fig. 2.

3.3. Comparison with previous studies

Correlation between the registered time of procedure and the predicted time of procedure is shown in Fig. 3 (Pearson's $r = 0.430$).

4. Discussion

To the best of our knowledge this is the first study relating ESD time of procedure with factors from the lesion,

Table 2 Multivariate analysis of predictors for longer procedure time (>90 min). $p < 0.05$ was considered as statistically significant.

	OR	(95%CI)	
Size			
≤20 mm	1		
>20 mm	4.91	(2.29–10.50)	<0.001
Location			
Lower third	1		
Middle third	1.182	(0.46–3.07)	0.731
Upper third	18.26	(2.02–164.78)	0.01
Adverse events			
No	1		
Yes	2.84	(0.84–9.63)	0.093
ASA			
1–2	1		
3	1.713	(0.63–4.65)	0.292

OR, odds ratio; CI, confidence interval.

Bold signifies statistically significant values.

patient and the procedure itself in Western countries. We showed that lesions with more than 20 mm, located on the upper third of the stomach have a time of procedure significantly higher than smaller lesions, on middle and lower stomach. Co-morbidities should be taken into account but only larger lesions and lesions on the upper third are independent predictors for longer procedure time. Our results

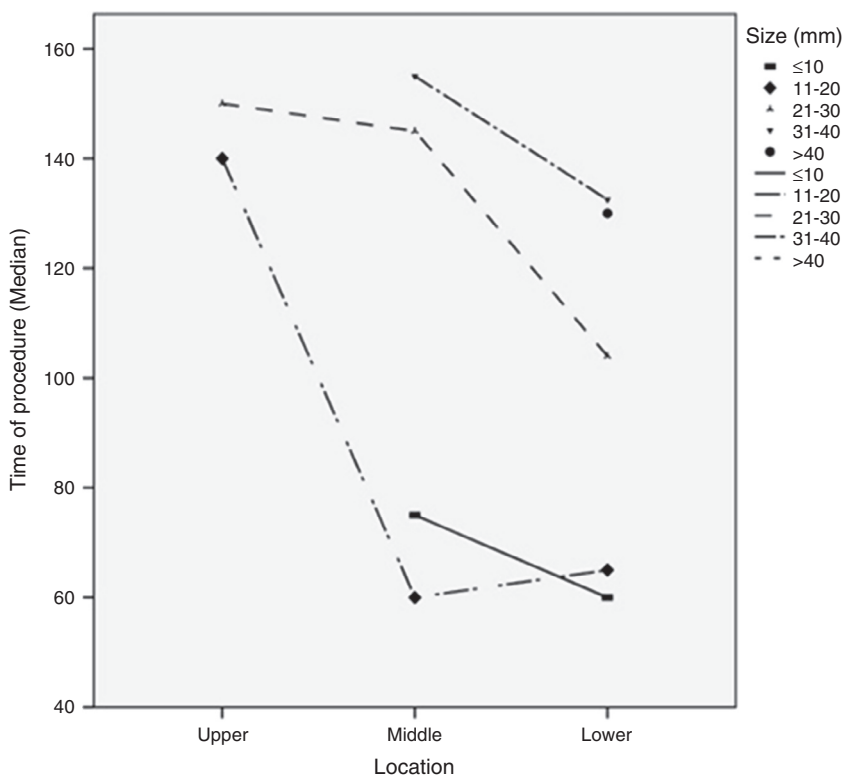


Figure 2 Time of procedure (median) according to location and size of lesion.

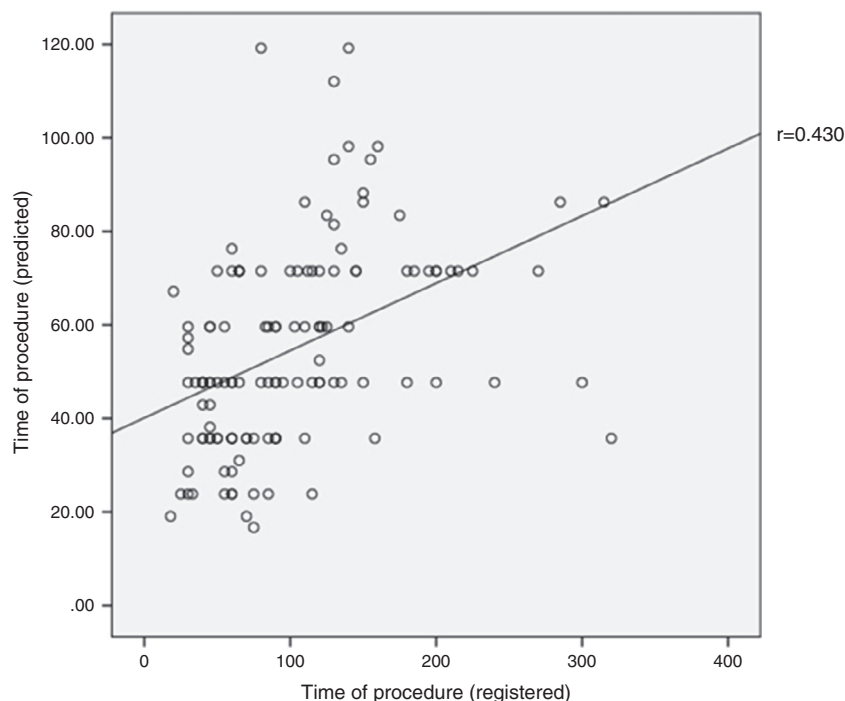


Figure 3 Correlation between registered time of procedure and the predicted time of procedure by Goto *et al.* formula.

may permit to establish these factors relevant for planning and management of these patients.

4.1. Predictive factors of prolonged time of procedure

Comparing the different characteristics of the lesions, a cross sectional dimension >20 mm had longer procedure times when compared to lesions ≤ 20 mm (120 (IQR 80–147.50) min vs 65 (IQR 45–110) min, $p < 0.001$). Moreover, when the lesion was located on the upper third the median time was of 145 (IQR 115–253.75) min, significantly different from times recorded for lesions on the lower third with a median time of 80 (IQR 46.25–120) min, $p = 0.022$. In what relates to the general condition of the patient, measured by the ASA score, ASA 3 patients had a median procedure time of 120 (IQR 62.5–165) min, clearly longer than patients with ASA 1 with a median time of 65 (IQR 40–95) min, $p = 0.011$. We also showed that these same characteristics tend to be associated with a procedure longer than 90 min. In fact, the size and location were independently associated with a time longer than 90 min whereas the risk profile of patients and/or the evidence of adverse events (bleeding) during the procedures were not independent.

The reasons why the first two factors can act as predictors for a longer time of procedure can be easily explained – a larger lesion will obviously require a higher area to be dissected and therefore more time; the location at the upper third, due to the position required for the scope and the wall characteristics, require more technical skills.^{7,30,31} Nevertheless, for the other two factors we may have different reasons not to observe them as independent predictive factors – bleeding is expected more often in lesions in the upper third³² and ASA 3 patients prevalence is very low and they

tend to be older [median age of 75 (IQR 69.5–80) vs 70 (IQR 59–76) on ASA 1 and 2, $p = 0.005$] what may lead to larger [median dimension of 30 mm (IQR 18–30) on ASA 3 vs 20 mm (IQR 15–25) on ASA 1 and 2, $p = 0.037$] and more advanced lesions.

4.2. Predictive factors compared to eastern series

Moreover, the majority of our findings are in accordance with previous findings in eastern series, specifically in what regards to size and location of lesion.^{7,15–19}

Goto *et al.*¹⁶ developed a formula to predict the time of procedure based on size of lesion, location on the upper third and presence of ulceration. Comparing to our results, and considering the non-existence of ulcerated lesions on this series, for a lesion of 20 mm or more and located on the upper third, its predicted time of procedure is never less than 86 min which is in accordance with our findings that those two factors are associated with a procedure time longer than 90 min. The correlation between the registered time of procedure and the predicted time of procedure on this formula is shown in Fig. 3 (Pearson's $r = 0.430$).

Our results are also consistent with previous findings by Ahn *et al.*¹⁸ as the predicted times of procedure for lesions on the upper third with more than 30 mm are always superior to 90 min. However, it does not have the same conclusion to lesions between 21 and 30 mm.

Regarding the intra-procedure adverse events predicting a longer time of procedure (>90 min) it is in agreement with previous findings by Yamamoto *et al.*³³ stating that uncontrolled hemorrhagic makes the procedure lengthier.

We have also linked a higher ASA score to a prolonged procedure time. However, this finding contradicts Kim *et al.*,³⁴ if we assume that a ASA 3 is similar to their's high risk group

defined as having one or more co-morbidity states. However, it is not clear if this contradiction is real or if it is due to different classification systems and it was not confirmed as an independent factor. Interestingly we did not find that any medication, including anticoagulants, interfere with procedure time.

4.3. Limitations

One of the limitations of our study has to do with the standard used to calculate time of procedure, based on the time of anesthesia. This means that our times of procedure can be slightly superior to the ones found on other studies that, for instance, count the time only on the beginning of lesion's marking and that the procedure chosen for the anesthesia can also have a different impact on the global time itself. Nevertheless, the mean time of procedure on this series is similar to times reported on different eastern series and for purposes of human resources and room allocation it is interesting to consider the time of anesthesia as a time of procedure as it is more accurate.

However, it can have an impact on the finding of the relation with the ASA score, as this one could relate directly to time of anesthesia and not with time of procedure. Also, it has also been reported on literature that many times the ASA score is subjective to inter-observer variations.³⁵ Therefore, this finding should be looked with special attention.

However, future studies should focus on the analysis of time of anesthesia and time of procedure itself alone, evaluated at the same time, to give us a perspective on the impact of adverse events of the procedure itself or anesthetic adverse events on the global time.

Another limitation has to do with the evaluation of size being done with a cut-off point in the 20mm, a methodological option that has to do with the size of our series not allowing comparisons in smaller groups.

A different limitation has to do with the fact that we only considered IT-knife for analysis for the scope of this study as previous studies refer that different knives have different times of procedure associated.³⁶ However, the option here was purely methodological as we had cases on our series with other knives, but the choice of other knives or concomitant knives with IT-knife was based on the fact that lesions were identified as more complicated and lengthy, that made us to opt to focus on only one knife, so this bias was not present on this study. Anyway, further studies comparing times of procedure with different knives can be an interesting area for research.

Finally, we do not have consistently recorded data for fibrosis and existence of scar throughout the observation period, bringing to the surface the limitation of this study being a retrospective study and subsequently the comparisons with other works. The definition of long-term prospective studies on this area with the focus on studying factors influencing time of procedure are the key for obtaining consistent and comparable data worldwide.

5. Conclusion

In summary, we found that lesions on the upper stomach, greater than 20mm and in patients with significant

co-morbidities can increase the time of procedure and it is expected that it will last more than 90 min, with the first two being independent predictors. It is important to keep in mind if these three factors are present on a certain lesion before the procedure, so an adequate planning of operation, human resources and anesthetic method can be performed, therefore allowing an increased efficacy and efficiency.

Conflicts of interest

The authors have no conflicts of interest to declare.

Acknowledgements

We hereby acknowledge all of those involved in the treatment of these patients, namely the Anesthesiology Department of IPO, all the nurses in Gastroenterology Department and the multidisciplinary teams that with us treated these patients.

References

1. Tanabe S, Ishido K, Higuchi K, Sasaki T, Katada C, Azuma M, et al. Long-term outcomes of endoscopic submucosal dissection for early gastric cancer: a retrospective comparison with conventional endoscopic resection in a single center. *Gastric Cancer*. 2014;17:130–6.
2. Ribeiro-Mourao F, Pimentel-Nunes P, Dinis-Ribeiro M. Endoscopic submucosal dissection for gastric lesions: results of an European inquiry. *Endoscopy*. 2010;42:814–9.
3. Min BH, Lee JH, Kim JJ, Shim SG, Chang DK, Kim YH, et al. Clinical outcomes of endoscopic submucosal dissection (ESD) for treating early gastric cancer: comparison with endoscopic mucosal resection after circumferential precutting (EMR-P). *Dig Liver Dis*. 2009;41:201–9.
4. Ahn JY, Jung HY, Choi KD, Choi JY, Kim MY, Lee JH, et al. Endoscopic and oncologic outcomes after endoscopic resection for early gastric cancer: 1370 cases of absolute and extended indications. *Gastrointest Endosc*. 2011;74:485–93.
5. Nonaka S, Oda I, Nakaya T, Kusano C, Suzuki H, Yoshinaga S, et al. Clinical impact of a strategy involving endoscopic submucosal dissection for early gastric cancer: determining the optimal pathway. *Gastric Cancer*. 2011;14:56–62.
6. Park YM, Cho E, Kang HY, Kim JM. The effectiveness and safety of endoscopic submucosal dissection compared with endoscopic mucosal resection for early gastric cancer: a systematic review and metaanalysis. *Surg Endosc*. 2011;25:2666–77.
7. Chung IK, Lee JH, Lee SH, Kim SJ, Cho JY, Cho WY, et al. Therapeutic outcomes in 1000 cases of endoscopic submucosal dissection for early gastric neoplasms: Korean ESD Study Group multicenter study. *Gastrointest Endosc*. 2009;69:1228–35.
8. Mannen K, Tsunada S, Hara M, Yamaguchi K, Sakata Y, Fujise T, et al. Risk factors for complications of endoscopic submucosal dissection in gastric tumors: analysis of 478 lesions. *J Gastroenterol*. 2010;45:30–6.
9. Toyokawa T, Inaba T, Omote S, Okamoto A, Miyasaka R, Watanabe K, et al. Risk factors for perforation and delayed bleeding associated with endoscopic submucosal dissection for early gastric neoplasms: analysis of 1123 lesions. *J Gastroenterol Hepatol*. 2012;27:907–12.
10. Yoo JH, Shin SJ, Lee KM, Choi JM, Wi JO, Kim DH, et al. Risk factors for perforations associated with endoscopic submucosal dissection in gastric lesions: emphasis on perforation type. *Surg Endosc*. 2012;26:2456–64.

11. Akasaka T, Nishida T, Tsutsui S, Michida T, Yamada T, Ogiyama H, et al. Short-term outcomes of endoscopic submucosal dissection (ESD) for early gastric neoplasm: multicenter survey by Osaka University ESD Study Group. *Dig Endosc.* 2011;23:73–7.
12. Isomoto H, Ohnita K, Yamaguchi N, Fukuda E, Ikeda K, Nishiyama H, et al. Clinical outcomes of endoscopic submucosal dissection in elderly patients with early gastric cancer. *Eur J Gastroenterol Hepatol.* 2010;22:311–7.
13. Park CH, Kim H, Kang YA, Cho IR, Kim B, Heo SJ, et al. Risk factors and prognosis of pulmonary complications after endoscopic submucosal dissection for gastric neoplasia. *Dig Dis Sci.* 2013;58:540–6.
14. Jeong JY, Oh YH, Yu YH, Park HS, Lee HL, Eun CS, et al. Does submucosal fibrosis affect the results of endoscopic submucosal dissection of early gastric tumors? *Gastrointest Endosc.* 2012;76:59–66.
15. Oda I, Odagaki T, Suzuki H, Nonaka S, Yoshinaga S. Learning curve for endoscopic submucosal dissection of early gastric cancer based on trainee experience. *Dig Endosc.* 2012;24 (Suppl. 1):129–32.
16. Goto O, Fujishiro M, Kodashima S, Ono S, Omata M. Is it possible to predict the procedural time of endoscopic submucosal dissection for early gastric cancer? *J Gastroenterol Hepatol.* 2009;24:379–83.
17. Nagata S, Jin YF, Tomoeda M, Kitamura M, Yuki M, Yoshizawa H, et al. Influential factors in procedure time of endoscopic submucosal dissection for gastric cancer with fibrotic change. *Dig Endosc.* 2011;23:296–301.
18. Ahn JY, Choi KD, Choi JY, Kim MY, Lee JH, Choi KS, et al. Procedure time of endoscopic submucosal dissection according to the size and location of early gastric cancers: analysis of 916 dissections performed by 4 experts. *Gastrointest Endosc.* 2011;73:911–6.
19. Lu ZS, Yang YS, Feng D, Wang SF, Yuan J, Huang J, et al. Predictive factors of endoscopic submucosal dissection procedure time for gastric superficial neoplasia. *World J Gastroenterol.* 2012;18:7009–14.
20. Pimentel-Nunes P, Mourao F, Veloso N, Afonso LP, Jacome M, Moreira-Dias L, et al. Long-term follow-up after endoscopic resection of gastric superficial neoplastic lesions in Portugal. *Endoscopy.* 2014;46:933–40.
21. Dinis-Ribeiro M, Pimentel-Nunes P, Afonso M, Costa N, Lopes C, Moreira-Dias L. A European case series of endoscopic submucosal dissection for gastric superficial lesions. *Gastrointest Endosc.* 2009;69:350–5.
22. Deprez PH, Bergman JJ, Meisner S, Ponchon T, Repici A, Dinis-Ribeiro M, et al. Current practice with endoscopic submucosal dissection in Europe: position statement from a panel of experts. *Endoscopy.* 2010;42:853–8.
23. Dinis-Ribeiro M, da Costa-Pereira A, Lopes C, Moreira-Dias L. Feasibility and cost-effectiveness of using magnification chromoendoscopy and pepsinogen serum levels for the follow-up of patients with atrophic chronic gastritis and intestinal metaplasia. *J Gastroenterol Hepatol.* 2007;22:1594–604.
24. Dinis-Ribeiro M. Chromoendoscopy for early diagnosis of gastric cancer. *Eur J Gastroenterol Hepatol.* 2006;18:831–8.
25. Dinis-Ribeiro M, da Costa-Pereira A, Lopes C, Lara-Santos L, Guilherme M, Moreira-Dias L, et al. Magnification chromoendoscopy for the diagnosis of gastric intestinal metaplasia and dysplasia. *Gastrointest Endosc.* 2003;57:498–504.
26. Pimentel-Nunes P, Dinis-Ribeiro M, Soares JB, Marcos-Pinto R, Santos C, Rolanda C, et al. A multicenter validation of an endoscopic classification with narrow band imaging for gastric precancerous and cancerous lesions. *Endoscopy.* 2012;44:236–46.
27. Japanese Gastric Cancer Association. Japanese gastric cancer treatment guidelines 2010. *Gastric Cancer.* 2011;14:113–23.
28. The Paris endoscopic classification of superficial neoplastic lesions: esophagus, stomach, and colon: November 30 to December 1, 2002. *Gastrointest Endosc.* 2003;58 (6 Suppl.):S3–43.
29. Owens WD, Felts JA, Spitznagel EL Jr. ASA physical status classifications: a study of consistency of ratings. *Anesthesiology.* 1978;49:239–43.
30. Kaltenbach T, Soetikno R, Kusano C, Gotoda T. Development of expertise in endoscopic mucosal resection and endoscopic submucosal dissection. *Tech Gastrointest Endosc.* 2011;13:100–4.
31. Murata A, Okamoto K, Muramatsu K, Matsuda S. Endoscopic submucosal dissection for gastric cancer: the influence of hospital volume on complications and length of stay. *Surg Endosc.* 2014;28:1298–306.
32. Oda I, Suzuki H, Nonaka S, Yoshinaga S. Complications of gastric endoscopic submucosal dissection. *Dig Endosc.* 2013;25 Suppl. 1:71–8.
33. Yamamoto S, Uedo N, Ishihara R, Kajimoto N, Ogiyama H, Fukushima Y, et al. Endoscopic submucosal dissection for early gastric cancer performed by supervised residents: assessment of feasibility and learning curve. *Endoscopy.* 2009;41:923–8.
34. Kim BJ, Chang TH, Kim JJ, Min BH, Lee JH, Son HJ, et al. Efficacy and safety of endoscopic submucosal dissection for early gastric cancer in patients with comorbid diseases. *Gut Liver.* 2010;4:186–91.
35. Mak PH, Campbell RC, Irwin MG, American Society of Anesthesiologists. The ASA Physical Status Classification: inter-observer consistency. *American Society of Anesthesiologists. Anaesth Intensive Care.* 2002;30:633–40.
36. Lee JH, Hong SJ, Jang JY, Kim SE, Seol SY. Outcome after endoscopic submucosal dissection for early gastric cancer in Korea. *World J Gastroenterol.* 2011;17:3591–5.