



Correction

# Correction: Pan et al. Genome-Wide Identification of M35 Family Metalloproteases in *Rhizoctonia cerealis* and Functional Analysis of RcMEP2 as a Virulence Factor during the Fungal Infection to Wheat. *Int. J. Mol. Sci.* 2020, 21, 2984

Lijun Pan <sup>1,2,†</sup>, Shengxian Wen <sup>2,†</sup>, Jinfeng Yu <sup>3,†</sup> , Lin Lu <sup>1</sup>, Xiuliang Zhu <sup>1</sup> and Zengyan Zhang <sup>1,\*</sup>

<sup>1</sup> Institute of Crop Sciences, National Key Facility for Crop Gene Resources and Genetic Improvement, Chinese Academy of Agricultural Sciences, Beijing 100081, China; plj7512@163.com (L.P.); lulin@caas.cn (L.L.); zhuxiuliang@caas.cn (X.Z.)

<sup>2</sup> College of Agriculture, Hunan Agricultural University, Changsha 410128, China; wsx8725@hunau.net

<sup>3</sup> College of Plant Protection, Shandong Agricultural University, Taian 271018, China; jfyu@sda.u.edu.cn

\* Correspondence: zhangzengyan@caas.cn; Fax: +0086-10-82105819

† These authors contributed equally to this work.



**Citation:** Pan, L.; Wen, S.; Yu, J.; Lu, L.; Zhu, X.; Zhang, Z. Correction: Pan et al. Genome-Wide Identification of M35 Family Metalloproteases in *Rhizoctonia cerealis* and Functional Analysis of RcMEP2 as a Virulence Factor during the Fungal Infection to Wheat. *Int. J. Mol. Sci.* 2020, 21, 2984. *Int. J. Mol. Sci.* 2021, 22, 5531. <https://doi.org/10.3390/ijms22115531>

Received: 10 May 2021

Accepted: 18 May 2021

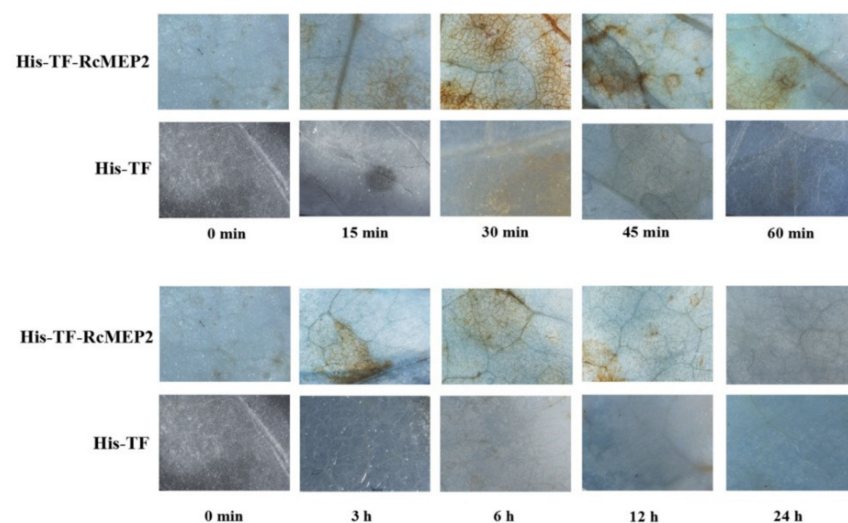
Published: 24 May 2021

**Publisher's Note:** MDPI stays neutral with regard to jurisdictional claims in published maps and institutional affiliations.



**Copyright:** © 2021 by the authors. Licensee MDPI, Basel, Switzerland. This article is an open access article distributed under the terms and conditions of the Creative Commons Attribution (CC BY) license (<https://creativecommons.org/licenses/by/4.0/>).

In the original article, there was a mistake in Figure 8 as published. The picture of His-TF-RcMEP2 at 60 min was confused by L.J.P. because the sample container marker was blurred [1]. Thus, Figure 8 should be replaced with the following figure (Figure 1).



**Figure 1.** H<sub>2</sub>O<sub>2</sub> accumulation triggered by RcMEP2 in the infiltrated *N. benthamiana* leaves. H<sub>2</sub>O<sub>2</sub> accumulation (as indicated by diaminobenzidine staining) appeared obviously in the veins and stomata of His-TF-RcMEP2 infiltrated leaves but not obviously in leaves infiltrated with 5 μM His-TF-tag solution (CK). These stains were observed and photographed under a stereomicroscope. Bar, 2 mm.

The correction does not change the scientific conclusions of the article in any way. The authors apologize for any confusion this error may have caused to the readers.

**Conflicts of Interest:** The authors declare no conflict of interest.

## Reference

1. Pan, L.; Wen, S.; Yu, J.; Lu, L.; Zhu, X.; Zhang, Z. Genome-Wide Identification of M35 Family Metalloproteases in *Rhizoctonia cerealis* and Functional Analysis of RcMEP2 as a Virulence Factor during the Fungal Infection to Wheat. *Int. J. Mol. Sci.* 2020, 21, 2984. [[CrossRef](#)] [[PubMed](#)]