

# Clinical, immunological and genetic characteristic of patients with clinical phenotype associated to LRBA-deficiency in Colombia

## Características clínicas, inmunológicas y genéticas de pacientes con fenotipo clínico asociado a la deficiencia de LRBA en Colombia

Catalina Martínez-Jaramillo<sup>1</sup>, Sebastian Gutierrez-Hincapie<sup>1</sup>, Julio César Orrego Arango<sup>2</sup>, Gloria María Vásquez-Duque<sup>3</sup>, Ruth María Erazo-Garnica<sup>3</sup>, Jose Luis Franco<sup>1</sup> and Claudia Milena Trujillo-Vargas<sup>1</sup>

1 Universidad de Antioquia, Facultad de Medicina, Grupo de Inmunodeficiencias Primarias, Medellín, Colombia, 2 Universidad de Antioquia, Grupo de Inmunología Celular e Inmunogenética, Medellín, Colombia, 3 Universidad de Antioquia, Programa de Posgrado, Reumatología Pediátrica, Medellín, Colombia  
\*catalina.martinez@udea.edu.co

### Abstract

#### Background:

LPS-responsive beige -like anchor protein (LRBA) deficiency is a primary immunodeficiency disease caused by loss of LRBA protein expression, due to biallelic mutations in LRBA gene. LRBA deficiency patients exhibit a clinically heterogeneous syndrome. The main clinical complication of LRBA deficiency is immune dysregulation. Furthermore, hypogammaglobulinemia is found in more than half of patients with LRBA-deficiency. To date, no patients with this condition have been reported in Colombia

#### Objective:

To evaluate the expression of the LRBA protein in patients from Colombia with clinical phenotype associated to LRBA-deficiency.

#### Methods:

In the present study the LRBA-expression in patients from Colombia with clinical phenotype associated to LRBA-deficiency was evaluated. After then, the clinical, the immunological characteristics and the possible genetic variants in LRBA or other genes associated with the immune system in patients that exhibit decrease protein expression was evaluated.

#### Results:

In total, 112 patients with different clinical manifestations associated to the clinical LRBA phenotype were evaluated. The LRBA expression varies greatly between different healthy donors and patients. Despite the great variability in the LRBA expression, six patients with a decrease in LRBA protein expression were observed. However, no pathogenic or possible pathogenic biallelic variants in LRBA, or in genes related with the immune system were found.

#### Conclusion:

LRBA expression varies greatly between different healthy donors and patients. Reduction LRBA-expression in 6 patients without homozygous mutations in LRBA or in associated genes was observed. These results suggest the other genetic, epigenetic or environmental mechanisms, that might be regulated the LRBA-expression.

#### OPEN ACCESS

**Citation:** Martínez-Jaramillo C, Gutierrez-Hincapie S, Orrego AJC, Vásquez-Duque GM, Erazo-Garnica RM, Franco JL et al. Clinical, immunological and genetic characteristic of patients with clinical phenotype associated to LRBA-deficiency in Colombia. *Colomb Med (Cali)*. 2019; 50(3): 176-91 <http://dx.org/10.25100/cm.v50i3.3969>

**Received:** 25 Feb 2019

**Revised:** 28 Aug 2019

**Accepted:** 16 Sep 2019

#### Keywords:

LRBA, Common variable immunodeficiency, X-linked agammaglobulinemia, Hypogammaglobulinemia, Immunoglobulin A deficiency, Enteropathy, Idiopathic Thrombocytopenic Purpura, Systemic Lupus Erythematosus, Whole Exome Sequencing

#### Palabras clave:

LRBA, Inmunodeficiencia variable común, Gamaglobulinemia asociada-X, hipogamaglobulinemia, deficiencia de inmunoglobulina A, enteropatía, trombocitopenia purpura idiopática, lupus eritematoso sistémico, secuenciación total del exoma.

Copyright: © 2019. Universidad del Valle.



**Conflicts of interest:**  
Nothing

**Funding:**  
Departamento Administrativo de Ciencia, Tecnología e Innovación, COLCIENCIAS (Grant #111556934430)

## Resumen

### Antecedentes:

La deficiencia de LRBA (del inglés, *LPS-responsive beige -like anchor protein*) es una inmunodeficiencia primaria causada por la pérdida de la expresión de la proteína LRBA, debido a mutaciones bialélicas en el gen LRBA. Los pacientes con deficiencia de LRBA exhiben un síndrome clínicamente heterogéneo. La principal complicación clínica de la deficiencia de LRBA es la desregulación inmune. Además, la hipogammaglobulinemia se encuentra en más de la mitad de los pacientes con deficiencia de LRBA. Hasta la fecha, no se han reportado pacientes con esta afección en Colombia

### Objetivo:

Evaluar la expresión de la proteína LRBA en pacientes de Colombia con fenotipo clínico asociado a deficiencia de LRBA

### Métodos:

En el presente estudio se evaluó la expresión de LRBA en pacientes de Colombia con fenotipo clínico asociado a deficiencia de LRBA. Después de eso, se evaluaron las características clínicas, inmunológicas y las posibles variantes genéticas en LRBA o en otros genes asociados con el sistema inmune en pacientes que exhiben una disminución de la expresión de la proteína.

### Resultados:

En total, se evaluaron 112 pacientes con diferentes manifestaciones clínicas asociadas al fenotipo clínico LRBA. La expresión de LRBA varía mucho entre diferentes donantes sanos y pacientes. A pesar de la gran variabilidad en la expresión de LRBA, se observaron seis pacientes con una disminución en la expresión de la proteína LRBA. Sin embargo, no se encontraron variantes bialélicas patógenas o posibles patógenas en LRBA, o en genes relacionados con el sistema inmune.

### Conclusión:

La expresión de LRBA varía mucho entre diferentes donantes sanos y pacientes. Se observó reducción de la expresión de LRBA en 6 pacientes sin mutaciones homocigotas en LRBA o en genes asociados. Estos resultados sugieren los otros mecanismos genéticos, por ejemplo epigenéticos o ambientales, que podrían estar regulados por la expresión de LRBA

## Remark

### 1) Why was this study conducted?

LRBA deficiency patients exhibit a clinically heterogeneous syndrome. The main clinical complication of LRBA deficiency is immune dysregulation. Enteropathy, autoimmune hemolytic anemia and idiopathic thrombocytopenic purpura are the most common clinical manifestation. In more than half of patients are at low levels: IgM and IgG or IgA and IgG, IgA only or IgG only. To date, no patients with this condition have been reported in Colombia. Was evaluated of mutations in LRBA in patients from Colombia with predominantly antibody deficiencies such as CVID, XLA, IHG and SIgAD, autoimmune manifestations such as ITP and SLE and/or enteropathies and determine if the cause of the clinical phenotype in these patients is mutations in LRBA or are other genes responsible for the pathogenesis

### 2) What were the most relevant results of the study?

Six (n= 112) patients showed decreased in LRBA protein expression. We observed a reduction in two patients with CVID, two with XLA and in two with IHG. These patients exhibit different phenotypic and immunologic characteristic. However, all patients presented with a reduction in IgG and recurrent infections by otitis and sinusitis, and five presented with gastropathy. We didn't find pathogenic or potentially pathogenic variants neither in LRBA nor in other immune-related genes.

### 3) What do these results contribute?

The expression of LRBA identifies a lot in the CMSP between different DS and patients. Six patients exhibited a decrease in the expression of this protein. No genes associated with defective LRBA production by these cells were detected in these patients. Homozygous mutations in LRBA cause deficiency that affects protein expression. However, reduced LRBA expression in patients without homozygous mutations or in associated genes were present. These results detect the other genetic mechanisms, epigenetic or environmental, may be regulating the expression of LRBA.

## Introduction

Primary immunodeficiency diseases (PID) are a heterogeneous group of inheritable genetic disorders that cause quantitative and/or functional alterations in different mechanisms involved in the immune response<sup>1</sup>. PIDs are considered “rare” diseases, but most prevalence estimates have been based on selected populations (e.g. specialty clinics, disease registries)<sup>2</sup>. However, these the frequencies are much higher than the reported estimates based on the registry data suggesting both underreporting and ascertainment bias. Therefore, the data obtained from registries does not provide adequate coverage to estimate prevalence or age distribution of PID<sup>2</sup>.

LPS-responsive beige -like anchor protein (LRBA) deficiency is a PID caused by loss of LRBA protein expression. LRBA deficiency is an autosomal recessive disorder caused by either homozygous or compound heterozygous mutations in *LRBA* gene<sup>3</sup>. LRBA deficiency results in a clinically variable syndrome with a wide spectrum of clinical manifestations. The main clinical LRBA deficiency complication is the immune dysregulation, followed by organomegaly and recurrent infections. Among patients with immune dysregulation, enteropathy is the most common clinical manifestation, followed by autoimmune hemolytic anemia and idiopathic thrombocytopenic purpura<sup>4</sup>. Furthermore, hypogammaglobulinemia is found 57% of the patients. Among patients with hypogammaglobulinemia, 17% of patients had reduced IgM and IgG levels, 17% had reduced IgA and IgG levels, and the 34% had low titers of all three immunoglobulin isotypes. In addition, the 16% patients had reduced IgA levels only, and 16% had low IgG levels<sup>4</sup>. To date, no patients with this condition have been reported in Colombia.

The goal of the present study was to evaluate the expression of the LRBA protein in patients with clinical phenotype associated to LRBA-deficiency from Colombia. Subsequently, to evaluate the clinical, immunological characteristics and the possible genetic variants involved in the regulation of the expression of this protein or other associated with an immune system in patients that exhibit decrease LRBA expression.

## Materials and Methods

Summary of the methodology is showed in the Figure S1

### Human subjects

Patients referred to the Grupo de Inmunodeficiencias Primarias de la Universidad de Antioquia (Medellín, Colombia) presenting with any clinical manifestation of the LRBA deficiency (Immune dysregulation: enteropathy, autoimmune hemolytic anemia, idiopathic thrombocytopenic purpura, granulomatous-lymphocytic interstitial lung disease, type I diabetes and/or chronic autoimmune hepatitis; organomegaly: splenomegaly, lymphadenopathy and/or hepatomegaly; hypogammaglobulinemia: low titer IgM, IgG or IgA levels, or reduced all three immunoglobulin isotypes) were recruited to evaluate the LRBA expression in peripheral blood mononuclear cells (PBMC). Excluded were patients with incomplete diagnosis according to the criteria of the specialist. Healthy controls matched by age and gender with patients, parents and siblings were also included and samples were run in parallel with those of the patients, this was performed to ensure that the variability of expression was not inherent to age or sex and to determine if other members of the family also was affected the expression of the protein. The study was approved by the Institutional Review Board from Sede de Investigación Universitaria (SIU), Universidad de Antioquia, UdeA. Written informed consent was obtained from all participants involved in this study.

### Evaluation LRBA expression

**Western Blot (WB) Analysis** PBMC were obtained from peripheral blood (PB) isolated by density gradient centrifugation using Ficoll-Hypaque (Sigma-Aldrich, St Louis, MO). PBMC were resuspended in RPMI 1640 medium with L-glutamine and sodium bicarbonate (Sigma-Aldrich), supplemented with 10% of heat-inactivated fetal bovine serum (FBS, Gibco, MA, USA), 2% penicillin/streptomycin mixture (Lonza, Walkersville, MD) (Complete RPMI) and stimulated with phytohemagglutinin A (PHA, 10 mg/mL, Sigma-Aldrich). Cells were harvested and lysed using the RIPA buffer (Cell Signaling, MA) containing a protease inhibitor cocktail (Amresco, GA) and 0.1 M Phenyl methanesulfonyl fluoride (PMSF, Sigma-Aldrich). Protein

levels were measured using the Quick Start (Bradford Protein Assay (Bio-Rad, CA) following manufacturer instructions. Lysates were resolved by SDS-PAGE (Polyacrylamide from Amresco, 10% gradient gel). Proteins were transferred onto polyvinylidenedifluoride (PVDF) membranes (Bio-Rad) and incubated with polyclonal rabbit anti-human LRBA antibody (HPA023597, Sigma-Aldrich), anti-GAPDH (Sigma-Aldrich) and anti-rabbit IgG-peroxidase antibody as secondary antibody (Sigma-Aldrich), were used for the protein detection. Signals were detected by the Western Blotting Luminol Reagent (Santa Cruz Biotechnology, TX) using the Syngene G:Box XR5 chemiluminescent and multicolor fluorescent imaging system (Integrated Scientific Solutions, San Diego, CA). Band quantification was performed using ImageJ 1.48v software (National Institutes of Health, Bethesda, MA). As a control of the reduction of the LRBA expression, the patient's cell lysate CVID022 was used, since it exhibited a decrease in the expression from the first WB performed.

### Flow cytometry analysis (Fluorescence-activated cell sorting-FACS)

*Ex vivo* PB cells and PBMC stimulated w/o PHA (10 µg/mL), were intracellularly stained with the polyclonal anti-LRBA antibody (HPA019366, Sigma-Aldrich) using anti Rabbit PE-F(ab)<sup>2</sup> Donkey IgG (Sigma-Aldrich) as a secondary antibody. Intracellular cell staining was performed using Cytotfix/Cytoperm and the Perm/Wash solutions from BD following the manufacturer's instructions. Cells were resuspended in Dulbecco PBS 1X (dPBS Sigma-Aldrich) prior to analysis. FACS was performed using a Fortessa II (BD, Franklin Lakes, NJ) and analyzed using the FlowJo V9.9.5 software (Tree Star, Inc. Ashland, OR).

Furthermore, to evaluate LRBA staining specificity from the polyclonal antibody by FACS, the immunization LRBA peptide of the anti-LRBA polyclonal antibody (HPA019366, Sigma-Aldrich) was synthesized by ProteoGenix (Schiltigheim, France) and then diluted in dPBS (Sigma-Aldrich) at a final concentration of 4 mg/mL. Then, different peptide concentrations (2, 0.2, 0.02, 0.002 mg/mL diluted in dPBS) were incubated with the anti-LRBA antibody, and subsequently, specific binding of this anti-LRBA antibody mixture to the cells was evaluated *ex vivo* intracellular in CD3<sup>+</sup> cells from PBMC.

### Immunologic studies

Clinical information and immunological analysis (immunoglobulin levels, lymphocyte subpopulation numbers in peripheral blood) from patients were obtained from the Grupo de inmunodeficiencias primarias diagnostic service records.

### Whole-Exome Sequencing (WES)

Genomic DNA (gDNA) was isolated from PB obtained from patients and their parents using the DNA Isolation Kit from Puregene™ (Gentra Systems, Minneapolis, MN) following manufacturer's instructions. gDNA were subjected to WES by MacroGen® (Seoul, Korea), using the Illumina HiSeq X Ten Sequencing System. gDNA were subjected to library preparation, which introduced adapters into the genomic DNA, while fragmenting it into 100 bp segments. The adapter sequence was used to amplify fragmented gDNA in a limited cycle polymerase chain reaction. The DNA was enriched for exonic fragments, which were also amplified<sup>5</sup>. Sequences were aligned for variant calling and annotation with the human genome reference sequence (hg19 build) using BWA software (<http://bio-bwa.sourceforge.net>). Downstream processing was performed with Samtools - Faidx and Picard - Dict software, PICARD (<http://broadinstitute.github.io/picard/>), and the genome analysis toolkit (GATK), <https://software.broadinstitute.org/gatk/best-practices/workflow?id=11145>.

The command line to select variants in candidate genes was: variants in genes previously associated with PID, population frequency <1% in both 1000 genome and Exome Aggregation Consortium (ExAC), nonsynonymous, located in exonic or splicing regions, deleterious effect predicted by SIFT, Polyphen2, MutationTaster or CADD (Table S1). Homozygote mutations were filtered because we suspected a recessive pattern of inheritance (Figure S2).

To predict the intronic variants effect, the *In-silico* tools EX-SKIP was also used (<http://ex-skip.img.cas.cz/>). Also, NetGene2 (<http://www.cbs.dtu.dk/services/NetGene2/>) and Fruitfly ([http://www.fruitfly.org/seq\\_tools/promoter.html](http://www.fruitfly.org/seq_tools/promoter.html)) predictors were used for testing splice site variants. The reference sequences NM\_006726.4 was used for the analysis of the LRBA variants.

## Blast Analysis

A BLAST analysis (Basic Local Alignment Search Tool, <https://blast.ncbi.nlm.nih.gov>) was performed to evaluate if the peptides recognized by the anti-LRBA polyclonal antibodies used in this study (HPA019366 and HPA023597, Sigma-Aldrich) were cross-reacting with other human proteins. The peptides of the anti-LRBA polyclonal antibodies (HPA019366 and HPA023597, Sigma-Aldrich) were subjected to a blast analysis against all reference proteins using the following parameters: Database: refseq protein; Organism: Homo sapiens (taxid:9606); Algorithm: blatstp (protein-protein BLAST).

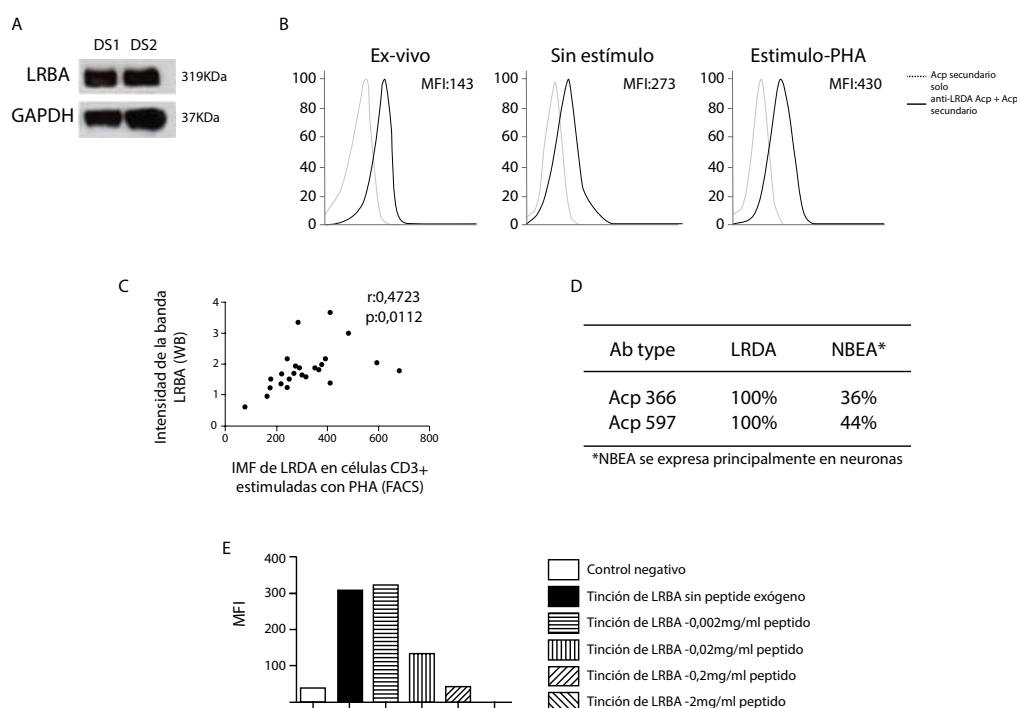
## Statistical analysis

Pearson correlation coefficient using GraphPad Prism 5 (<https://www.graphpad.com/support/prism-5-updates/>) was performed to measure the statistical correlation between the intensity of the LRBA detection by WB (LRBA band intensity) and the LRBA staining by FACS (Mean fluorescence intensity, MFI).

## Results

### Detection of LRBA in peripheral blood (PB) cells

To confirm the sensitivity of this test and the accuracy of two different LRBA antibodies commercially available, we standardized the evaluation of LRBA expression in human PBMC by WB and FACS. Using WB, the LRBA band at 319 kDa in PHA-stimulated PBMC cells from healthy donors (HD) was detected (Fig. 1A). Also, LRBA by FACS in *ex vivo* PB cells and PBMC stimulated w/o PHA. LRBA is constitutively expressed in CD3+ cells from PB *ex vivo* and in unstimulated PBMC after three days of incubation was detected, however, upon stimulation with PHA, the expression is increased two-fold (Fig. 1B). the correlation between the ability of WB and FACS to detect LRBA was evaluated (Fig. 1C), and a positive correlation (r:



**Figure 1.** Standardization of the LRBA staining in human peripheral blood cells. Phytohemagglutinin A (PHA)-stimulated peripheral blood mononuclear cells (PBMC) cells from healthy donors (HD) were obtained and immediately lysed to extract and quantified proteins (40 µg) that were tested in a Western blot with the antibody anti-LRBA (HPA023597, Sigma) using GAPDH as a constitutively expressed protein. Bands were detected at 319 and 37 kDa, respectively (A). Consecutively, *ex vivo* PB cells and PBMC stimulated w/o PHA (1 µg/mL) were intracellularly stained with the antibody anti-LRBA (HPA019366, Sigma) using anti Rabbit PE-F(ab)<sup>2</sup> Donkey IgG as a secondary antibody. Dotted lines indicate the staining only with the secondary antibody. Continued lines represent the staining with the anti-LRBA antibody together with the secondary antibody. Shown is the LRBA staining gating only the CD3+ cells (B). A Pearson correlation analysis was performed by comparing the intensity of the LRBA detection by western blot (LRBA band intensity) and the LRBA staining by FACS (Mean fluorescence intensity, MFI) (C). Also, a BLAST analysis (<https://blast.ncbi.nlm.nih.gov>) was performed to evaluate if the peptide recognized by the anti-LRBA antibodies used in this study were cross-reacting with NBEA (Sequence from [www.ncbi.nlm.nih.gov/nuccore/NC\\_000013.11](http://www.ncbi.nlm.nih.gov/nuccore/NC_000013.11)) (NBEA is a paralog of LRBA) (D). Considering that anti-LRBA antibodies obtained commercially are polyclonal, the specificity of recognition was also evaluated using the LRBA peptide SVLMVSKYRDILEPQNERHSQCTETGSENVSLSEITPAAFSTLTTASVVESESTSSARRRDSGIGEEETATGLGSHVEVTPHTAPPVGSAGPDAISEVL-STLSLEVNKSPETKNDGRNDLDTKATPSVSV as a competitive reagent at different concentrations. The percentage of the recognition of the cell LRBA protein was calculated (E).

0.4723  $p$ : 0.0112) between the level of LRBA detection among both techniques was observed. To assure the specificity of our antibodies, a BLAST analysis was performed to evaluate if every epitope recognized by the anti-LRBA antibodies was aligning with others human proteins (Fig. 1D). Besides the 100% match with the LRBA protein, these epitopes also matched with the paralog protein NBEA in 36% and 44%, respectively. These results indicate that the polyclonal anti-LRBA antibodies used by us could also recognized NBEA but this possibility is ruled out because this protein has a very limited expression to brain <sup>6</sup>. In addition, the antibody Ab HPA019366 showed specific binding to intracellular LRBA that was lost when adding a specific LRBA-blocking peptide in a dose-dependent manner (Fig. 1E).

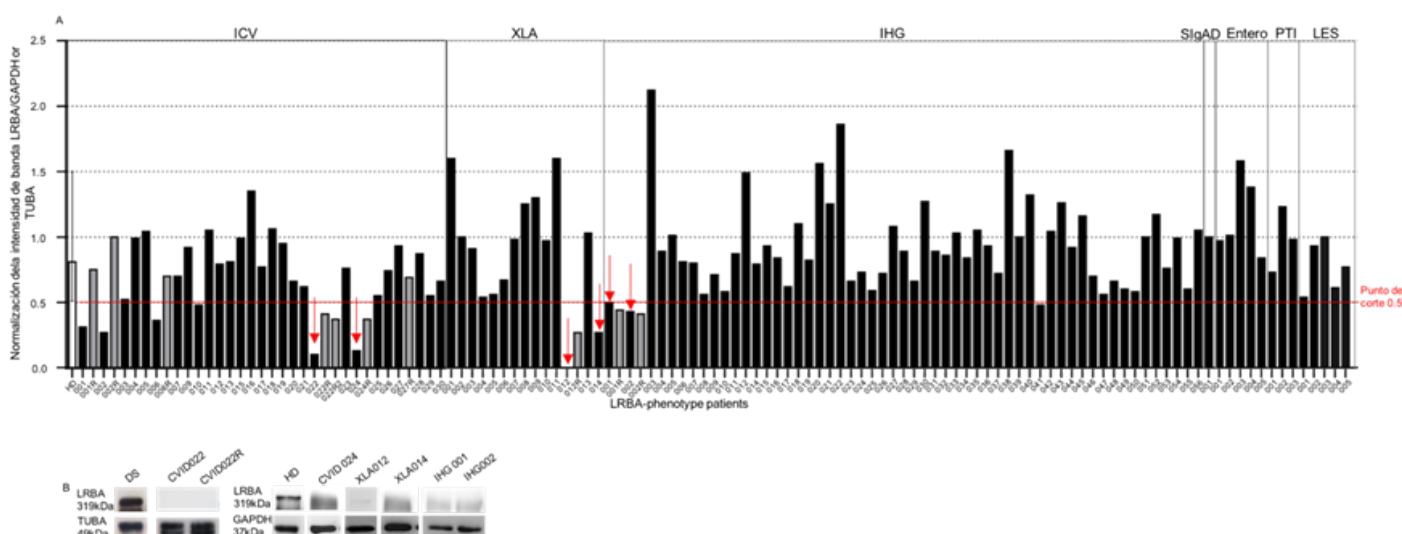
### Expression of LRBA in patients with clinical phenotype associated to LRBA-deficiency

According the inclusion criteria, one hundred and twelve patients were recruited, 29 patients with common variable immunodeficiency (CVID), 14 with X-linked agammaglobulinemia (XLA), 55 with idiopathic hypogammaglobulinemia (IHG), 1 with selective IgA deficiency (SIgAD), 5 with enteropathies, 3 with Idiopathic thrombocytopenic purpura and 5 with systemic lupus erythematosus (SLE) (Fig. 2A). In our cohort, patients with CVID, IHG, XLA and SIgAD presented with either hypo or agammaglobulinemia, 9 CVID patients exhibited autoimmune manifestations (Table S2).

The relative expression expression of LRBA was evaluated by WB in 25 HD and quantified using densitometry, to normalize it against the expression of the constitutive protein (either TUBA or GAPDH) (Fig. 2A). Optimal cut-of point of LRBA to distinguish between “decrease LRBA expression” and “normal LRBA expression” was selected considering the minimum value of LRBA expression among HD (cut of point 0.5).

As a negative control, CVID022 was used since this sample was always negative for the expression of LRBA (Fig. 2A). Also, the LRBA expression in *ex-vivo* PB cells and PBMC stimulated w/o PHA by FACS was evaluated (Fig. S3). LRBA exhibited a 2.3-fold decrease in *ex-vivo* patient’s cells compared to that in HD cells. Therefore, the reduction in the expression of LRBA in lymphocytes from CVID022 was observed not only by WB but also by FACS. Unfortunately, it was not possible to evaluate the LRBA expression by flow cytometry in the other patients with decreased LRBA expression by WB. Similar results were observed in PBMC w/o PHA-stimuli. Nevertheless, the effect was more evident in PHA-stimulated PBMC with an 8-fold decrease in the expression of LRBA in the patient as compared to a HD (Fig. S3).

Decrease LRBA expression in nine protein lysates from PHA-stimulated PBMC was observed (Figure 2A, gray bars), but only were repeated in eight and confirmed in six lysates by obtaining



**Figure 2.** LRBA expression in patients. One hundred and twelve patients were recruited to evaluate the LRBA expression by western blot (WB). PHA-stimulated PBMC from 25 healthy donors and patients were obtain and lysed to extract and quantify proteins (40 µg) that were tested in a WB with the anti-LRBA antibody Ab HPA023597 (Sigma) using either GAPDH or TUBA as a constitutively expressed protein. Bands were detected at 319 kDa for LRBA, 37 KDa for GAPDH and 49 KDa for TUBA. Normalization of the LRBA band intensity against the constitutive protein (GAPDH or TUBA) is shown in (A). WB band intensities of LRBA in PHA-stimulated cells from patients with LRBA decreased expression is shown in (B). CVID: Common Variable Immunodeficiency, XLA: X-linked agammaglobulinemia, IHG: Hypogammaglobulinemia, SIgAD: Selective IgA Deficiency, ITP: Idiopathic thrombocytopenic purpura, SLE: Systemic Lupus Erythematosus. The gray bars represent the repeated samples. The red arrows indicate the patients with decrease in LRBA who continued in the study

Table 1. Summary of the clinical characteristics of patients with decreased LRBA expression

Patient	Current Age (y)	Age at first symptom (y)	Age at diagnosis (y)	Recurrent Infections	Gastrointestinal diseases	Other clinical manifestations	
						Allergies	Anemia
CVID022	36	10	13	Tonsillitis, pneumonia, otitis, sinusitis.	Diarrhea with mucus (giardiasis and amebiasis) gastritis and duodenal polyps	Rhinitis	Yes
CVID024	19	2	35	Tonsillitis, pneumonia, otitis, parotitis, periorbital cellulitis, sinusitis.	Appendicitis with abdominal sepsis, irritable bowel disease	Conjunctivitis, Rhinitis	-
XLA012	7	1	1	Urinary tract infection, otitis, Aspergillosis†, chronic bronchial syndrome, sinusitis.	Acute gastroenteritis and diarrheal disease (Salmonellosis)	-	Yes
XLA014	4	1	1	Upper respiratory tract infections, otitis, sinusitis.	-	Rhinitis	-
Hipo001	9	1	3	Bronchiolitis, pneumonia, otitis media, laryngitis	Gastroesophageal reflux disease (GERD) grade IV, food allergy	Asthma	-
Hipo002	11	1	4	Otitis, tonsillitis	Gastrointestinal infection, diarrhea, chronic abdominal pain	-	-

† This infection was systemic but not recurrent.

a second blood sample: two CVID patients (CVID22 and CVID024), two XLA patients, (XLA012 and XLA014) and two hypogammaglobulinemia patients (IHG001 and IHG002) (Fig. 2 red arrow). Interestingly, the hypogammaglobulinemia patients are siblings. It is important to mention that CVID027 is a sister of these siblings, however she did not show decrease LRBA expression in PBMC (Fig. 2A).

There was no difference in the expression of LRBA by WB in cells obtained from patients with the different clinical conditions evaluated in comparison to HD (Mean/SD of the normalized band intensity: HD: 0.86/0.25; CVID: 0.69/0.32; XLA: 0.86/0.47; IHG: 0.90/0.35; enteropathies: 1.1/0.31; ITP: 0.98/0.25 and SLE: 0.77/0.2).

Interestingly, an increase in the LRBA expression in 7 patients was observed (XLA001, XLA011, IHG003, IHG022, IHG022, IHG038, Entero003). The Figure 2B show WB band intensities of LRBA in PHA-stimulated cells from patients with LRBA decreased expression

### Clinical phenotype of patients with decreased LRBA expression

The clinical characteristics of the patients is showed in the Table 1. The CVID022 patient is a female born full-term in 1982, product of the first pregnancy to unrelated healthy parents from Medellin (Antioquia-Colombia). Although no family history of recurrent infections, autoimmunity or hematological malignancies was documented, rhinitis, bronchitis, diabetes type II, asthma and chronic obstructive pulmonary disease were described in the family members.

The CVID024. patient is a male, born full-term in 1998 to unrelated healthy parents. He is the first child and has a younger healthy brother. His father is from Medellin and his mother from Bolivar (Antioquia-Colombia). He only had a family history of type II diabetes and asthma in his paternal grandmother. At age 8, two variants in TAC1 were identified in a compound heterozygous pattern of inheritance: One variant, c.121G>C (p.41D>H) in exon 2 and the second variant c.297\_299insT (p.Q99fsX6) in exon 3. However, both variants were also identified in the unaffected mother and brother of the patient. The father was found wild type for both variants.

The XLA012. patient is a male, born by C-section in 2010 to unrelated healthy parents from Cúcuta (Norte de Santander, Colombia). He has also a healthy older sister. Diabetes and hypertension were reported in his maternal grandmother. Familiar history of a deceased uncle at the age of 5 due to “edema” was also documented. The genetic diagnosis of XLA was

**Table 2.** Immunological characterization of the patients with decreased LRBA expression in PHA-stimulated PBMC

	CVID022	CVID024	XLA012	XLA014	IHG001	Patients IHG002
<b>Immunoglobulin levels (mg/dL)</b>						
IgG	0 ↓	19.2 ↓	111.8 ↓	ND	6.4 ↓	675.4 ↓
IGM	5.7 ↓	55.1 ↑	53.1	ND	64.0	82.0
IGA	2.1 ↓	2 ↓	5.2 ↓	ND	<3.3 ↓	72.2
<b>Lymphocytes</b>	<b>Percentages/Absolute numbers (cells/mm<sup>3</sup>)</b>					
CD3+	64.0/1,169	74.0/2,963	90.5/2222 ↑	88.0/4,738 ↑	64.4/2,655	74.0/2,776
CD3+ CD4+	44.8/524	23.4/937	56.7/1,393 ↑	25.6/1,366	35.2/1,452	35.8/1,346
CD3+ CD8+	52.0/606	40.2/1,610	27.4/673	58.3/3,111 ↑	23.3/961	31.8/1,196
CD19+	8.2/147 ↓	12.8/230	0.7/16 ↓	0.1/3 ↓	23.3/961 ↑	17.6/660
CD19+/CD21+	7.0/125	11.0/197	0.4/11	0.0/1	22.1/914	16.1/606
CD19+CD27+	14.8/22 ↓	16.0/37	--	--	24.8/238 ↑	30.6/202 ↑
IGD+/CD27-	77.2/113 ↑	68.0/156	--	--	71.7/689 ↑	63.6/420 ↓
IGD+/CD27+	10.5/15 ↓	5.9/14 ↓	--	--	15.1/145 ↑	15.6/103 ↑
IGD-/CD27+	4.3/6 ↓	10.1/23	--	--	9.7/93 ↑	15.0/99 ↑
IGD+/CD38+	0.5/1	12.9/30	--	--	11.1/107	--
IGD-/CD38++	0.0/0 ↓	3.3/2.1	--	--	0.93/9 ↑	1.5/10
CD24++/CD38++	0.5/1 ↓	12.8/29	--	--	11/106	13.0/86

Ig: Immunoglobulin, ND: no data. The arrows down indicate decrease and the arrows upwards with respect to the reference value.

performed at age 2 with the detection of the mutation c.1573C>T p.Arg525X in *Btk*. During the five years follow up, a chronic bronchial syndrome, anemia and chronic sinusitis has been documented.

The patient XLA014 is a male, born full-term in 2013, product of the second pregnancy to unrelated healthy parents from Santa Rosa del Sur de Bolivar (Santander-Colombia). His mother had a previous spontaneous abortion and he has also a healthy younger sibling. Hematological cancer was reported in his paternal grandmother.

IHG001 is a male, born in 2008 in Medellin - Colombia from unrelated healthy parents. He was the product of the third pregnancy, born prematurely at 34 weeks of gestation by C-section with hyaline membrane disease. His father suffered from allergic rhinitis and his maternal grandmother documented asthma and hypothyroidism. He has also a cousin with hypothyroidism. His sister (IHG002) was born in 2006. She was the product of the second pregnancy, born at 36 weeks of gestation by C-section. These siblings have the older sister (CVID027) who had normal serum immunoglobulins and LRBA expression in PBMC.

### Immunological phenotype in patients with decrease LRBA expression

An immunological analysis of the different lymphocyte subsets in PB from all patients with LRBA decrease in PBMC did not show a common and distinctive phenotypic feature (Table 2). However, the immunological characteristics from the different patients were confirmed according to the disease group. All patients with CVID exhibited a serum IgG and IgA decrease. The T cell subpopulations in PB were normal in the CVID patients. A decrease in the memory B cells (IGD+/CD27+) was observed in both patients however, only CVID022 had a decreased in the switched memory B cells (IGD-/CD27+). With regard to the XLA patients, the decrease in the three serum Ig isotypes was observed in XLA012 whereas no serum Ig data previous to the IVIG replacement therapy was found for XLA14. Notorious was the very low numbers of PB B cells observed in these patients. Also, some minor alterations of CD3+ T cells were observed in the XLA patients. Interestingly, the two siblings with IHG exhibited different immunological phenotype. IHG001 exhibited very low levels of serum IgG and IgA whereas IHG002 presented with only decreased serum IgG. However, both exhibited increase in the memory B cell subpopulation (Table 2).

### LRBA variants in the patients with decrease LRBA expression.

WES was performed in the patients with decrease LRBA expression. Overall, eighteen either non-synonymous exonic or intronic *LRBA* variants were identified in these patients (Table 3). Five variants with population frequency (1% were found (Table 3, gray bars), which two possibly pathogenic variants rs148385798 in CVID022 patient and the rs950337550 in CVID024 patient



**Table 3.** LRBA variants in the patients with decrease LRBA expression in PHA-stimulated PBMC

Patients	Location	Ref	Alt	Exons/introns	SNP	Alleles	Frequency
CVID022	151199080	G	A	Exon	rs2290846	het	0.15
	<b>151207127</b>	C	T	Exon	rs3749574	het	0.16
	<b>151242312</b>	C	T	Intron	rs11737450	het	0.18
	<b>151753134</b>	A	-	Intron	rs145452262	het	0.062
	<b>151765243</b>	G	A	Intron	rs186080	hom	0.75
	<b>151935601</b>	A	G	Exon	rs148385798	het	0.002
	151408800	T	C	Intron	rs7674989	hom	0.2
	151656589	C	T	Intron	rs1993109	het	0.4
	151829659	T	C	Intron	rs1201207	hom	0.04
	151773593	G	C	Exon	rs1782360	hom	0.29
XLA12	<b>151207127</b>	C	T	Exon	rs3749574	het	0.16
	<b>151236393</b>	A	G	Intron	rs74459799	het	0.0062
	<b>151242312</b>	C	T	Intron	rs11737450	het	0.18
	<b>151357938</b>	G	A	Exon	rs950337550	het	0.000008
	<b>151765243</b>	G	A	Intron	rs186080	hom	0.75
XLA14	151817507	C	T	Intron	rs1813134	het	0.011
	<b>151765243</b>	G	A	Intron	rs115139393	hom	0.75
	<b>151829659</b>	TC	-	Intron	151829659	hom	0.96
	<b>151231371</b>	T	C	Intron	rs1813134	het	0.52
	151187011	-	GAGAT	Intron	rs201486611	het	0.69
IHG001 IHG002	<b>151231371</b>	T	C	Intron	rs1813134	hom	0.52
	<b>151235987</b>	G	A	Intron	--	het	--
	<b>151753134</b>	A	-	Intron	RS145452262	het	0.062
	<b>151762104</b>	G	A	Intron	RS893110507	het	0.00004
	<b>151765243</b>	G	A	Intron	RS186080	het	0.75

Ref: allele reference, Alt: allele altered, SNP: single nucleotide polymorphism, hom: homozygous, het: heterozygous. Highlighted in gray are the variants with a frequency <0.001 in the 1,000 genomes project (<http://www.internationalgenome.org>). The variables indicated in red are pathogenic or possibly pathogenic according to the predictors *in silico*.

were found (Table 3, red box). The variant rs148385798 is a heterozygous missense change c.T194C in the exon 2 which correspond to the change p.I65T in the ConA domain of the protein. The *In silico* analysis predicted to be “deleterious” with SIFT (score: 0.02); “disease causing” with MutationTaster (*p-value*: 0.995) and “deleterious” in PROVEAN (score: -2.558) and CADD score was 16.37. The second variant rs950337550 is the heterozygous missense variant c.6892A>G in exon 46 which confers a p.K2298E change in the BEACH domain. The *in silico* analysis predicted to be “deleterious” with SIFT (score: 0.005); “disease causing” with MutationTaster (*p-value*: 1) and “Non-deleterious” with PROVEAN (score: -1.44).

Considering that LRBA inheritance pattern is autosomal recessive and that we had not found biallelic variants, we continued to the variants analysis in other genes involved in the immune system.

### Other relevant variants found by Whole Exome Sequencing (WES) analysis

Were identified 50,300 high-quality variants in the CVID022 exome. Among them, 17056 were homozygous and 33244 heterozygous (Table 4). The variants in PID genes were first analyzed and homozygous variants in three genes (*PLCG2*, *POLE*, *RLTPR*) were found. However, these variants were localized in intronic regions, very distant from the proximal exon. To proceed with the WES analysis, following the hypothesis of a recessive mood of inheritance, homozygous or compound heterozygous variants were selected. These variants should fulfill also the defined criteria. Three candidate genes (*KCNN3*, *TRPM3*, *ECT2L*) were selected, however *KCNN3* and *TRPM3* are not expressed in lymphoid tissues. Moreover, the patient's father also carried both variants in *ECT2L*. Finally, we evaluated the *de novo* heterozygous variants. One variant in *Mitochondrial Ribosomal Protein L3 (MRL3)* was found. Diseases associated with *MRPL3* include Combined Oxidative Phosphorylation Deficiency 9<sup>7</sup>. however, this is a severe condition that primarily impairs neurological and liver function.

In XLA12, 53,002 variants were identified, 14,785 homozygous and 20,730 heterozygous (Table 4). Within the PID genes, 27 variants were identified. Among them, the variant c.1573C>T p.Arg525X in *BTK* was confirmed. In other genes, no potential pathogenic candidate variants were found.

**Table 4.** Summary of whole-exome sequencing results in patients with decrease LRBA expression

Variants	CVID022	XLA012	XLA014	IHG001	IHG002
Total number	50,300	53,002	52,821	53,215	53,215
Number of Homozygous	17,056	14,785	15,015	14,654	14,654
Number of Heterozygous	33,244	20,731	20,530	21,352	21,352
PID related	PLCG2, POLE, RLTPR	BTK	BTK	---	
Homozygous candidates	KCNN3, TRPM3	---	---	PLCL2, FDFT1, GPRIN2	
Heterozygous candidates	ECT2L	---	---	SEC22B	

In XLA14, 52,821 high-quality variants were identified in the exome, 15,015 were homozygous and 20,530 heterozygous (Table 4). Within the PID-related genes, 40 variants were found and one variant potentially pathogenic one in *BTK* gene was identified. This correspond to c.622+1G>A (NM\_001287344). 3. An *in silico* analysis (fruit fly and NetGene2) showed that the effects of the *BTK* mutation conferring a change in the splice donor site at the end of the intron 6 within this gene affecting the protein at the PH domain.

In the IHG001 and IHG002 siblings, a total of 53,215 variants were found in both. Homozygous and heterozygous variant numbers are specified in Table 4. However, no common homozygous or compound heterozygotes in PDI genes were identified. Homozygous variants in *PLCL2*, *FDFT1* and *GPRIN2*, however, their father had the same homozygous variants in *PLCL2* and *FDFT1* and their mother had same homozygous variants in *GPRIN2*. Also, compound heterozygotes variants in *SEC22B* were found, however, their father carried the same variants.

## Discussion

In this work, the expression of LRBA in 112 patients with clinical manifestations associated with LRBA-deficiency was evaluated. The inter-individual and intra-individual concordance in detection of LRBA expression in PHA-stimulated PBMC was observed. LRBA expression as detected by WB, was very heterogeneous in HDs. This heterogeneity has also been reported by Gamez *et al.*<sup>8</sup>, who found by FACS, a MFI range between 2.14 - 10.00 (min-max) in the relative expression of LRBA in PBMC upon stimulation with PHA for four days in HD. Among these patients, decrease LRBA expression in nine protein lysates from patients was observed, after repeated, only in six protein lysates from patients was observed decrease. We still do not know why cells from some patients exhibited discordant LRBA expression levels in different blood samples and time points. A possible explanation for these results is an immune-triggered cellular senescence. Different factors such as persistent viral infections, stress and inflammatory syndromes induce the accumulation of T cells with characteristics of senescence<sup>9</sup>. It is possible that these patients have been going through periods of stress or infection with the consequence of an induced senescence and alterations in the proliferation of the cells. Since the detection of LRBA expression in PBMC in our settings is an activation-dependent phenomenon, decrease activation of senescent cells could lead to a decrease in the immune cell-detected expression of LRBA. However, an activation marker, such as CD69, should be included in the staining controls in the future studies. On the other hand, an increase in the LRBA expression in 7 patients was also observed. To date, overexpressed of this gene associated with some PID has not been reported, however, Wang *et al.*<sup>10</sup>, in 2004 reported by microarray and real time PCR analyses that LRBA is overexpressed in several cancers relative to their normal tissue controls. Additionally, the expression of cell activation must have been monitor in our patient's cells, since it has been previously shown that LRBA expression increases upon cell activation<sup>4</sup>. This could be stated as one of the limitations of our results since decreased LRBA expression by WB might have been caused by poor immune cell activation. However, we had always sample limitation due to the enormous amount of protein required to perform the WB. Moreover, there has been no correlation among the intensity of the LRBA expression by flow and the proliferation index in B cells in healthy donors (**Data not shown**). On the other hand, patients with poor proliferation of T and B cells included in this cohort, exhibited normal LRBA expression by WB (**Data not shown**).

The patients with decrease LRBA expression exhibited different phenotypic and immunologic characteristic. However, all patients presented with a reduction in IgG and recurrent infections and all except one presented gastropathy. Pathogenic or potentially pathogenic biallelic variants neither in *LRBA* nor in other immune-related genes were not observed. LRBA expression in

PBMC may be decreased due to epigenetic mechanisms<sup>11</sup>. Epigenetic mechanisms determine the phenotype without changes in the genotype, which operate at the transcriptional and post-transcriptional level of gene activity as well as at the level of protein translation and post-translational modifications. They participate in such processes as cell differentiation, morphogenesis, variability and adaptability of an organism and may be affected by both genetic and environmental factors<sup>11</sup>. Moreover, epigenetic changes have been proposed to contribute to the CVID pathogenesis. Rodríguez-Cortez *et al.*<sup>12</sup>, demonstrated by high-throughput DNA methylation analysis, in monozygotic twins discordant for CVID, predominant gain of DNA methylation in B cells in the CVID patients with respect to those from the healthy siblings. Taking together, the application of epigenetic studies to identify and characterize not only molecular signatures of LRBA deficiency as well as the mechanisms underlying disease pathogenesis and responses to new therapeutic modalities are required. Another possible explanation of the decrease in the expression of LRBA in PHA-stimulated PBMC from patients with no mutations in either LRBA or other genes by WES, would be the presence of pathogenic mutation in regulatory elements, including promoters, enhancers, insulators, and silencers in LRBA. Any variant that is located within a functional genomic region has the potential ability to cause a dysregulation on gene expression through modifying regulatory elements, possibly resulting in diseases pathogenesis<sup>13</sup>. In recent years, genome-wide association studies (GWAS) identified over ten thousand variants associated with various diseases/traits, ~90% of which localize outside of known protein-coding regions<sup>14</sup>. In addition, to evaluate the copy number variation and coverage rate of every LRBA exon, to exclude a second heterozygous variant in patients with high clinical suspicion of LRBA deficiency, are required in future studies.

In the present study, variables with clinical significance in *LRBA* were not found, then, we continued with the analysis of variables in other genes throughout the exome. A new variant (c.622+1G>A NM\_001287344) in *BTK* that probably confers a lost in the splice donor site at the end of the intron 6 in the XLA14 patient was found. When a naturally-occurring splice-sites are abolished by mutations, the spliceosome usually either employs the next available legitimate splice-site (exon skipping) or selects the next best, albeit illegitimate, splice-site in the vicinity (cryptic splice-site utilization)<sup>15</sup>. In this specific case, the mRNA transcription might be impaired after exon 6, affecting the protein from the amino acid 25 and generating a new truncated protein. The aberrant mRNAs could be removed by nonsense-mediated decay pathway, which targets mRNAs harboring premature termination codons for degradation<sup>16</sup>. Thus, the truncated protein, might not contain the PH, SH3, SH2, and protein kinase domains of the protein and therefore, might be either not functional or subjected to degradation by the Ubiquitin-Proteasome Pathway. However, the exact effect of the mutation should be verified in functional studies.

Taking together, the results from this study indicate, LRBA expression varies greatly between different HDs and patients PBMC. Despite the great variability in the LRBA expression in the different samples, six patients exhibited a decrease expression of this protein by WB in PHA-stimulated PBMC. No genes were detected associated with the defective LRBA production by these cells in these patients. Homozygous mutations in *LRBA* cause LRBA-deficiency affecting the protein expression. However, reduction LRBA-expression in patients without homozygous mutations or in associated genes were present. These results suggest the other genetic, epigenetic or environmental mechanisms, that might be regulated the LRBA-expression.

The specificity of the LRBA detection by WB and FACS was previously evaluated. A positive correlation between the ability of WB and FACS to detect LRBA was demonstrated. FACS experiments using competitive epitopes to validate the specificity of recognition of LRBA were also performed. With these results, we demonstrated that antibodies showed specific binding to intracellular LRBA that was lost when adding a specific LRBA-blocking peptide in a dose-dependent manner.

## References

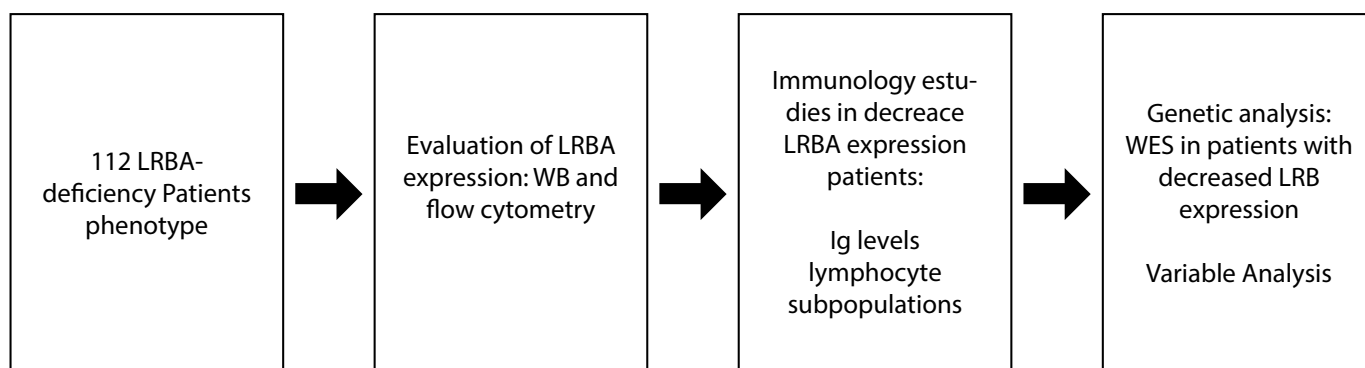
1. Casanova JL, Conley ME, Seligman SJ, Abel L, Notarangelo LD. Guidelines for genetic studies in single patients: lessons from primary immunodeficiencies. *J Exp Med.* 2014; 211(11):2137-49. doi: 10.1084/jem.20140520
2. Bousfiha AA, Jeddane L, Ailal F, Benhsaien I, Mahlaoui N, Casanova JL, *et al.* Primary immunodeficiency diseases worldwide: More common than generally thought. *J Clin Immunol.* 2013;33(1):1-7. doi: 10.1007/s10875-012-9751-7.

3. Lopez-Herrera G, Tampella G, Pan-Hammarström Q, Herholz P, Trujillo-Vargas CM, Phadwal K, *et al.* Deleterious mutations in LRBA are associated with a syndrome of immune deficiency and autoimmunity. *Am J Hum Genet.* 2012;90(6):986-1001. doi: 10.1016/j.ajhg.2012.04.015
4. Gamez-Días L, August D, Stepensky P, Revel-Vilk S, Seidel MG, Noriko M, *et al.* The extended phenotype of LPS-responsive beige-like anchor protein (LRBA) deficiency. *J Allergy Clin Immunol.* 2016;137(1):223-230. doi: 10.1016/j.jaci.2015.09.025.
5. Pabinger S, Dander A, Fischer M, Snajder R, Sperk M, Efremova M, *et al.* A survey of tools for variant analysis of next-generation genome sequencing data. *Brief Bioinform.* 2014; 15: 256-78. doi: 10.1093/bib/bbs086.
6. Wang X, Herberg FW, Laue MM, Wullner C, Hu B, Petrasch-Parwez E, *et al.* Neurobeachin: A protein kinase A-anchoring, beige/Chediak-higashi protein homolog implicated in neuronal membrane traffic. *J Neurosci.* 2000; 1:20(23):8551-65. Doi: 10.1523/JNEUROSCI.20-23-08551.2000.
7. Galmiche L, Serre V, Beinat M, Assouline Z, Lebre AS, Chretien D, *et al.* Exome sequencing identifies MRPL3 mutation in mitochondrial cardiomyopathy. *Hum Mutat.* 2011;32(11):1225-31. doi: 10.1002/humu.21562.
8. Gámez-Díaz L, Sigmund EC, Reiser V, Vach W, Jung S, Grimbacher B. Rapid flow cytometry-based test for the diagnosis of lipopolysaccharide responsive beige-like anchor (LRBA) deficiency. *Front Immunol.* 2018; 23(9):720. doi: 10.3389/fimmu.2018.00720.
9. Di Mitri D, Azevedo RI., Henson SM, Libri V, Riddell NE, Macaulay R, *et al.* Reversible Senescence in Human CD4+CD45RA+CD27- Memory T Cells. *J Immunol.* 2011;187(5):2093-100. doi: 10.4049/jimmunol.1100978.
10. Wang J, Gamsby JJ, Highfill SL, Mora LB, Bloom GC, Yeatman TJ, *et al.* Deregulated expression of LRBA facilitates cancer cell growth. *Oncogene.* 2004; 23(23): 4089-4097. doi: 10.1038/sj.onc.1207567
11. Santos-Rebouças CB, Pimentel MM. Implication of abnormal epigenetic patterns for human diseases. *Eur J Hum Genet.* 2007;15(1):10-7. doi: 10.1038/sj.ejhg.5201727
12. Rodríguez-Cortez VC, Del Pino-Molina L, Rodríguez-Ubreva J, Ciudad L, Gómez-Cabrero D, Company C, *et al.* Monozygotic twins discordant for common variable immunodeficiency reveal impaired DNA demethylation during naïve-to-memory B-cell transition. *Nat Commun.* 2015; 17(6):7335. doi: 10.1038/ncomms8335.
13. Ma M, Ru Y, Chuang LS, Hsu NY, Shi LS, Hakenberg J, *et al.* Disease-associated variants in different categories of disease located in distinct regulatory elements. *BMC Genomics.* 2015;16(8): S3. doi: 10.1186/1471-2164-16-S8-S3
14. Welter D, MacArthur J, Morales J, Burdett T, Hall P, Junkins H, *et al.* The NHGRI GWAS Catalog, a curated resource of SNP-trait associations. *Nucleic Acids Res.* 2014; 42(D1): 1001-1006. doi: 10.1093/nar/gkt1229.
15. Kurmangaliyev YZ, Gelfand MS. Computational analysis of splicing errors and mutations in human transcripts. *BMC Genomics.* 2008; 9: 1-10. doi: 10.1186/1471-2164-9-13.
16. Hug N, Longman D, Cáceres JF. Mechanism and regulation of the nonsense-mediated decay pathway. *Nucleic Acids Res.* 2016;29:44(4):1483-95. doi: 10.1093/nar/gkw010.

## ANEXOS

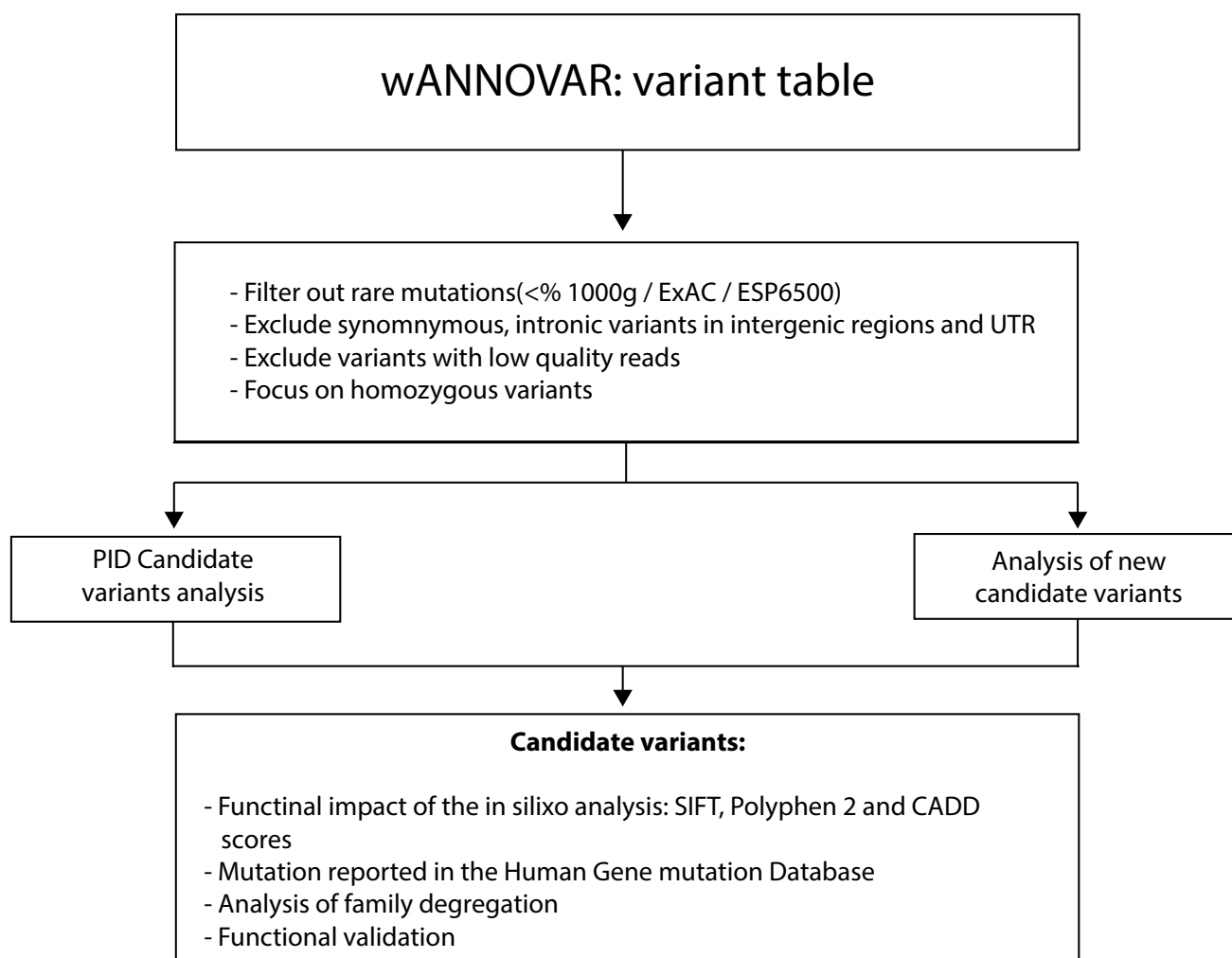
**Figure S1**

Summary of the methodology



**Figure S2**

Workflow for whole-exome sequencing analysis



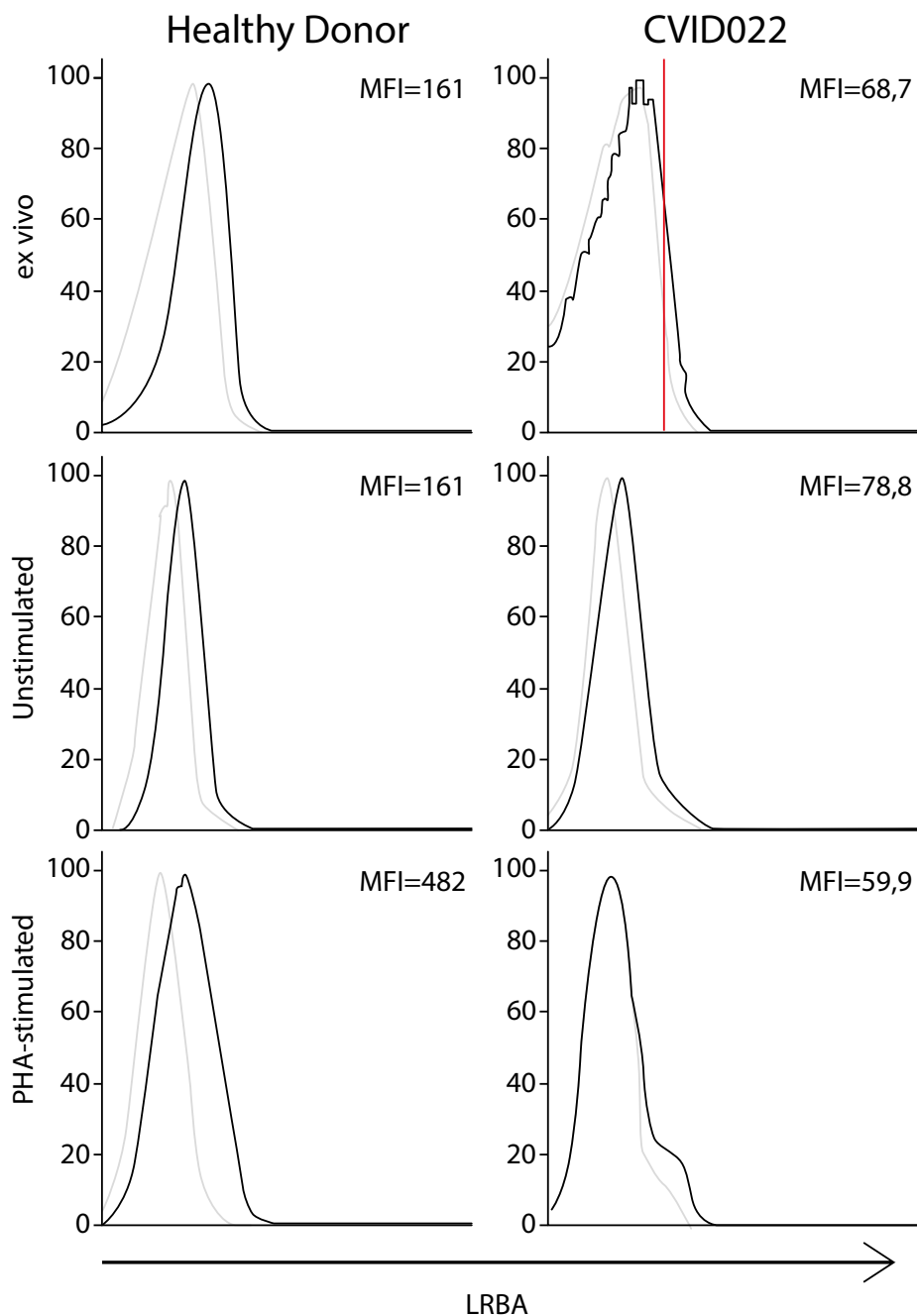
**Table S1.**

Summary of deleteriousness prediction methods used in this study

Name	Score	Information used
SIFT (Sorting Intolerant from tolerant)	Ranges from 0 to 1. The amino acid substitution is predicted damaging if the score is $\leq 0.05$ and tolerated if the score is $>0.05$ .	It predicts whether an amino acid substitution affects protein function based on sequence homology and the physical properties of amino acids.
PolyPhen-2 (Polymorphism Phenotyping v2)	Ranges from 0.0 (tolerated) to 1.0 (deleterious) 0.0 to 0.15: benign. 0.15 to 0.85: possibly damaging. 0.85 to 1.0: damaging.	It predicts possible impact of an amino acid substitution on the structure and function of a human protein using straightforward physical and comparative considerations.
MutationTaster	The prob value is the probability of the prediction, i.e. a value close to 1 indicates a high 'security' of the prediction. Please note that the prob value used here is NOT the p value (probability of error) as used in t-test statistics.	DNA sequence conservation, splice site prediction, mRNA stability prediction and protein feature annotations.
PROVEAN (Protein Variation Effect Analyzer)	The scores are averaged within and across clusters to generate the final PROVEAN score. If the PROVEAN score is equal to or below a predefined threshold (e.g. -2.5), the protein variant is predicted to have a "deleterious" effect.	It predicts whether an amino acid substitution or indel has an impact on the biological function of a protein.
CADD (Combined Annotation Dependent Depletion) >15		63 distinct variant annotation retrieved from Ensembl Variant Effect predictor (VEP), data from the ENCODE project and information from UCSC genome browser tracks.

**Figure S3.**

LRBA expression in PHA-stimulated PBMC from CVID022 by FACS.



Ex-vivo peripheral blood cells and PBMC stimulated w/o PHA (1  $\mu\text{g}/\text{ml}$ ) were intracellularly stained with the antibody anti-LRBA (HPA019366, Sigma) using anti Rabbit PE- F(ab)'<sub>2</sub> Donkey IgG as a secondary antibody. Dotted lines indicate the staining only with the secondary antibody. Continued lines represent the staining with the anti-LRBA antibody together with the secondary antibody. Shown is the LRBA staining gating only the CD3+ cells. The red line represents the LRBA mean fluorescence intensity (MFI) from the corresponding experiment in the HD

**Table S2.**

Summary of autoimmune manifestations in CVID and IHG patients

Disease	Code	Autoimmune manifestations
CVID	001	Hypothyroidism
	003	Hypothyroidism
	004	Discoid lupus, ulcerative colitis
	005	Hemolytic anemia and autoimmune hepatitis
	007	Hypothyroidism, inflammatory bowel disease
	011	Autoimmune thyroiditis and autoimmune hepatitis
	017	Hypothyroidism
	023	Hypothyroidism
	036	Autoimmune Thrombocytopenia
IHG	033	Hypothyroidism
	039	Hypothyroidism
	049	Hypothyroidism
	052	Autoimmune neutropenia

CVID: Common Variable Immunodeficiency, IHG Hypogammaglobulinemia