

## Video Article

# Imaging and 3D Reconstruction of Cerebrovascular Structures in Embryonic Zebrafish

Douglas W. Ethell<sup>1,2,3</sup>, D. Joshua Cameron<sup>1,4</sup><sup>1</sup>Molecular Neurobiology, Western University of Health Sciences<sup>2</sup>Graduate College of Biomedical Sciences, Western University of Health Sciences<sup>3</sup>College of Osteopathic Medicine of the Pacific, Western University of Health Sciences<sup>4</sup>College of Optometry, Western University of Health SciencesCorrespondence to: Douglas W. Ethell at [dethell@westernu.edu](mailto:dethell@westernu.edu)URL: <http://www.jove.com/video/50417>DOI: [doi:10.3791/50417](https://doi.org/10.3791/50417)

Keywords: Developmental Biology, Issue 86, Zebrafish, cerebrovascular, development, imaging, 3D, embryo, confocal, brain

Date Published: 4/22/2014

Citation: Ethell, D.W., Cameron, D.J. Imaging and 3D Reconstruction of Cerebrovascular Structures in Embryonic Zebrafish. *J. Vis. Exp.* (86), e50417, doi:10.3791/50417 (2014).

## Abstract

Zebrafish are a powerful tool to study developmental biology and pathology *in vivo*. The small size and relative transparency of zebrafish embryos make them particularly useful for the visual examination of processes such as heart and vascular development. In several recent studies transgenic zebrafish that express EGFP in vascular endothelial cells were used to image and analyze complex vascular networks in the brain and retina, using confocal microscopy. Descriptions are provided to prepare, treat and image zebrafish embryos that express enhanced green fluorescent protein (EGFP), and then generate comprehensive 3D renderings of the cerebrovascular system. Protocols include the treatment of embryos, confocal imaging, and fixation protocols that preserve EGFP fluorescence. Further, useful tips on obtaining high-quality images of cerebrovascular structures, such as removal of the eye without damaging nearby neural tissue are provided. Potential pitfalls with confocal imaging are discussed, along with the steps necessary to generate 3D reconstructions from confocal image stacks using freely available open source software.

## Video Link

The video component of this article can be found at <http://www.jove.com/video/50417/>

## Introduction

Zebrafish provide a powerful system to study developmental biology, and the relative transparency of their embryos is amenable to imaging-based studies<sup>1</sup>. The zebrafish has now been used as a model for vertebrate development for decades. Teleosts, including zebrafish, have a simplified vertebrate vascular system that has no reasonable homolog in invertebrates. Blood is pumped from the anterior chamber of a two-chambered heart through gills, where it is oxygenated. Blood from the gills converges at the dorsal aorta and passes through arteries that branch into smaller and smaller vessels, eventually reaching capillaries in organ tissues. Within capillaries oxygen is released and carbon dioxide is absorbed. On the venous side of capillaries blood flows into larger and larger veins and is finally drawn into the posterior chamber of the heart, where the cycle repeats.

An adult zebrafish can lay 200 or more eggs at a time, and once fertilized, they develop quickly<sup>2</sup>. Within one day the body axis is well developed, including muscles that contract and move the embryo around inside the chorionic membrane. From 2-7 days post-fertilization (dpf) most body systems develop, including eyes and a central nervous system that can coordinate swimming toward food or away from bright light. Up to 7 dpf embryos are small enough to allow for visualization with microscopy. Transgenic lines that express fluorescent proteins can be imaged with confocal or fluorescence microscopy. Confocal imaging can be paired with open-source software<sup>3</sup> to create 3D renderings of complete vascular structures in zebrafish embryos that provide a systems biology perspective of vascular development. Studies concerned with changes in vascular and cerebrovascular complexity will benefit from this protocol as it allows for a systems level analysis of vascular networks<sup>4,5</sup>. A compilation of methods and resources are provided to allow for easy adoption and of these techniques for studies that require imaging of vascular structures in embryonic zebrafish. The cost efficiency of zebrafish as an animal model is combining with emerging imaging technologies to provide new platforms with which to assess angiogenic effects of molecular pathways in vertebrate development and homeostasis.

## Protocol

### 1. Zebrafish Husbandry, Embryo Generation, and Treatment

1. Conduct the following zebrafish protocols under the guidance of an institutional animal care and use committee (IACUC) and within animal care guidelines of the NIH or other regulatory bodies/guidelines.

- Zebrafish strains that express fluorescent proteins in specific tissues, cells, or organs are available from the Zebrafish International Resource Center (ZIRC). For example, Tg (kdr:EGFP)s843 express EGFP in vascular endothelial cells<sup>6</sup>, which can be used to produce complete 3D vascular structures as shown in this protocol. Other lines of transgenic zebrafish are available from ZIRC.
- House adult zebrafish in an appropriate aquaculture system that monitors pH, salinity, temperature, dissolved oxygen, light, and other environmental factors<sup>7</sup>. The zebrafish shown here were housed in an Aquaneering Inc. system (San Diego, CA) at 28.5 °C with a 14 hour light/10 hour dark cycle. Feed adult zebrafish a balanced diet of brine shrimp and NRD 4/6 Fish food (Brine Shrimp Direct, Ogden, Utah).
- Adult male and female zebrafish of breeding age should be housed separately to increase mating successful.
- Stimulate egg laying and fertilization by placing females (2-4) and males (4-6) together in a mating container that has a mesh bottom with holes large enough for the eggs to fall through, but too small for the zebrafish adults to pass. Set up matings the evening before; eggs are laid near dawn, usually while the daytime light cycle slowly increases in intensity (dawn). Check for eggs at the bottom of the mating container every 15-30 minutes.
- Collect eggs using a mesh strainer and clean with E3 buffer (5 mM NaCl, 0.17 mM KCl, 0.33 mM CaCl<sub>2</sub>, 0.33 mM MgSO<sub>4</sub>). Transfer the eggs to 100 mm culture plates filled with E3 buffer and store in a 28 °C incubator.
- To study chemicals that alter cerebrovascular branching add desired chemical concentrations. For example neovascular branching can be induced with  $\gamma$ -secretase inhibitor (GSI IX/DAPT/N-[N-(3,5-Difluorophenacetyl-L-alanyl)]-S-phenylglycine-t-butyl ester) solubilized in DMSO<sup>4</sup>, beginning 24 hours post fertilization (hpf). At that time-point embryos are still within the chorion, and many chemicals can pass through it<sup>6</sup>. If a treatment condition has neural or motor effects that may impair the ability of embryos to break free of the chorion, then embryos should be de-chorionated between 24 and 48 hpf, which can be done with either forceps of pronase<sup>2</sup>. Embryos shown in the images provided were dechorionated by gently grabbing the chorion with two sharpened forceps and tearing it open.
- If needed/desired, pigment formation can be inhibited by adding 0.003% N-Phenylthiourea (PTU) to the E3 buffer at 24 hpf.

## 2. Confocal Imaging of Cerebrovascular Structures in Fixed Zebrafish Embryos

- Sacrifice embryos in 250 mg/L Tricaine methanesulfonate, and then fix them by immersion in 2 - 4% paraformaldehyde overnight at 4 °C. Containers with fluorescent embryos should be wrapped in foil. Once fixed, embryos should be stored in PBS at 4 °C until imaged - EGFP fluorescence intensity becomes less resolved after about a week, but morphology (as viewed in bright field) is preserved much longer.
- Prepare to mount the embryo by first removing one eye using a sharpened tungsten needle. Cut around the tissue connecting the eye first then cut the muscles, and finally cut the optic nerve to displace the eye. (Note: If imaging both sides is desired remove both eyes.)
- Once the eye is removed, mount the embryo on a coverglass using a drop of 3% methylcellulose. Orient the embryo so that the side with the removed eye is facing the coverglass and is as close to the glass as possible. Cover the entire embryo with methylcellulose to prevent desiccation during imaging.
- Image the mounted embryo immediately using an inverted confocal microscope equipped with a high-quality 20x Plan Apo objective (numerical aperture = 0.75 or better). This configuration is preferable to a non-inverted microscope that would require sandwiching the embryo between two glass planes, and pressing the embryo against the top glass.
- Collect optical slices in 1  $\mu$ m increments using a medium or large aperture setting. Larger steps of 2.5  $\mu$ m can also be used, but it may be more difficult to determine the spatial order of smaller objects. Small apertures produce sharper detail, but the longer scans required may bleach EGFP and also limit the depth of imaging into the embryo that can be achieved. A confocal microscope allows for imaging about half-way through an embryo.
- If imaging of the entire fish is desired, remove both eyes at the outset (see Note in step 3.2), rotate the embryo after imaging one side and repeat steps 2.3 - 2.5 for the opposite side.

## 3. 3D Reconstruction of Embryonic Zebrafish Cerebrovasculature

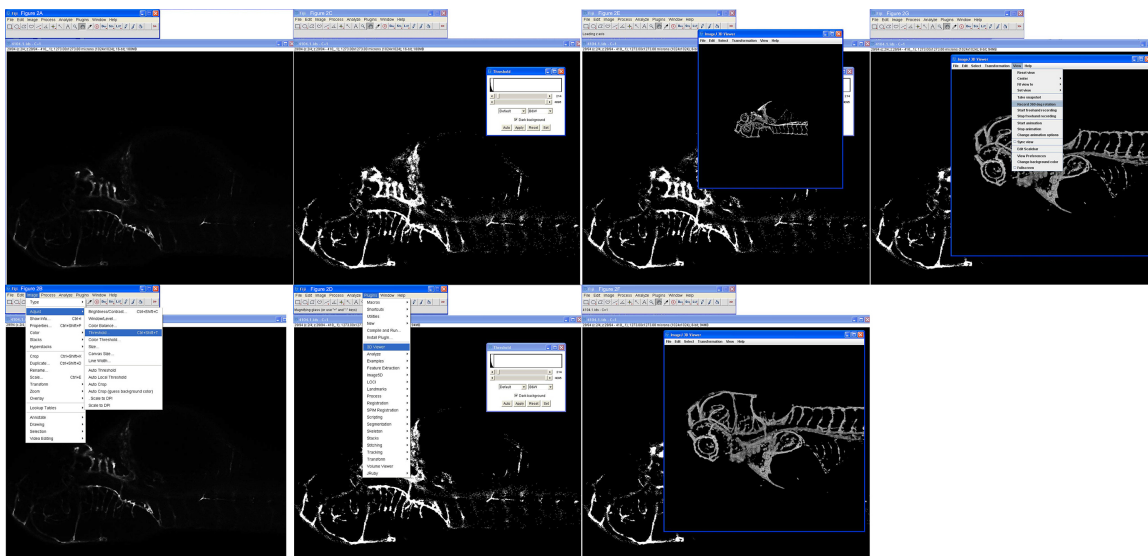
- Use the Fiji distribution<sup>3</sup> of open source ImageJ (<http://fiji.sc>), which is optimized for 3D renderings, free of charge, and compatible with PC, Mac and Linux computers.
- Import confocal stacks to Fiji by going to Plugins>LOCI>BioFormats Importer<sup>9</sup> then select the confocal file, e.g. name.ids for Nikon stacks (**Figure 2A**). Select View stack with Hyperstack, Color mode: grayscale, check autoscale, check split channels.
- These selections will open four separate channel panels; for EGFP only one will be needed, usually the third one down. Close the other three panels (red, blue and alpha) leaving the 16-bit image with a long name followed by C=1 (**Figure 2A**).
- Adjust threshold by scanning through the image using the scroll tab along the bottom to find a slice that has the region or structure of interest, then go to Image>Adjust>Threshold (**Figure 2C**).
- In the panel that comes up, slide the top bar (black level) to the left so that the structure can be seen quite well over background, and leave the bottom slide (white level) where it is (**Figure 2D**). Select B&W, select Dark background. Do not select calculate Threshold for each image unless different adjustments are required for each slice, select Black background. This process creates a new 8-bit image.
- WARNING: Threshold cannot be undone or saved in ImageJ, so the confocal stack will have to be reloaded every time a change is needed. Write down the numbers and try different settings until the desired result is achieved.
- Go to Plugins>3D Viewer>Threshold 0, Resampling factor 1 (best) or 2 (good), deselect the red and blue color boxes to make a green 3D output - otherwise it will produce a white rendering - select Apply (not Auto) (**Figure 2E**).
- Rotate, spin and zoom the 3D image using the mouse and keyboard controls (**Figure 2F**).
- Save still images at any point by using the capture option in the menu. The size of the image box on the screen dictates pixel dimensions of the image produced so if a high resolution image is desired make the box larger by dragging the bottom right corner.
- Create a spinning 3D movie by selecting View>Record 360 deg rotation (**Figure 2G**). Rotation defaults to 2 degrees per step, but it can be changed to 5 degrees for example, which will create much smaller file sizes, but may add jerkiness to the animation.
- Save the file in one of several available formats for later viewing with media players, uploading to the Internet, or using in PowerPoint presentations. The open source media player, VLC (<http://www.videolan.org/vlc/index.html>), is free of charge and handles these videos very well.

## Representative Results

3D reconstruction of vascular structures provides a comprehensive and visually interesting perspective of zebrafish development. **Figures 1 and 2** show methods as they typically done. **Figure 3** shows several angles of vascular structures in a 6 dpf zebrafish embryo that expressed EGFP in endothelial cells. With a solid green or white color it can be difficult to appreciate signal intensity; pseudo-coloring provide image intensity from a look-up-table and allows better depth perception when structures overlap. An example of a pseudo-colored 3D image of the vasculature in a 6 dpf zebrafish is provided in **Figure 4**. Fluorescence imaging of live embryos can be used to study physiological characteristics that include eye and body movement, and cardiac activity. **Figures 3 and 4** show representative results obtained with these methods, using the transgenic zebrafish line described. Imaging resolution depends on microscope characteristics, but the brightness of the EGFP signal is sufficient for good image quality with most commercial systems. Reconstruction and rendering of 3D representations is consistent and options within this open-source software provide consistently good results.

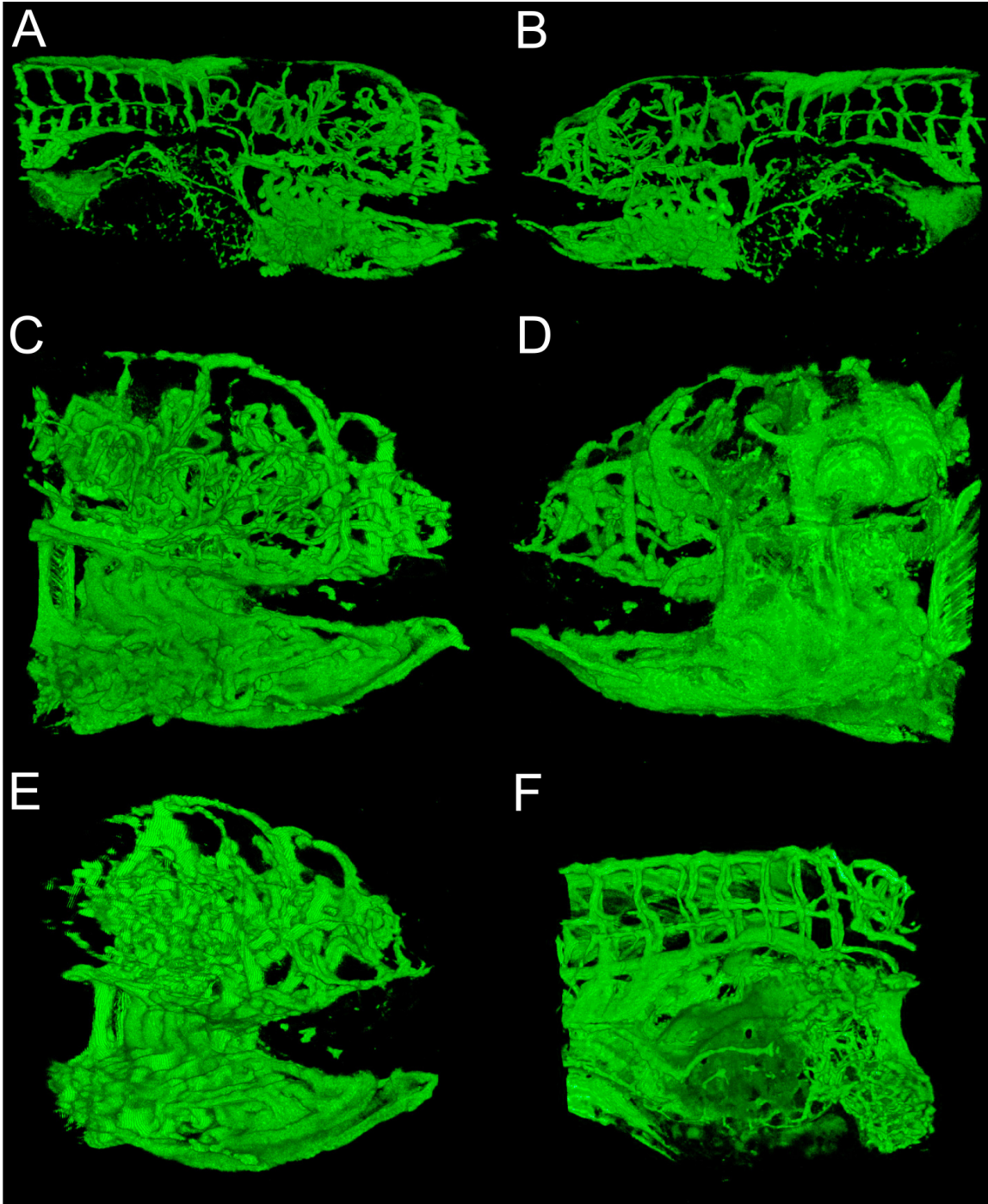


**Figure 1. Eye removal.** **A)** A fixed 3 dpf embryo with a tungsten need positioned next to the eye. Tissue is cut around the eye from this position. **B)** The eye is falls out and the underlying ocular muscles and optic nerve are cut. The empty eye socket is indicated with dashed circle. **C)** The same embryo is turned over and mounted with methyl-cellulose, with the intact eye facing up. [Please click here to view a larger version of this figure.](#)

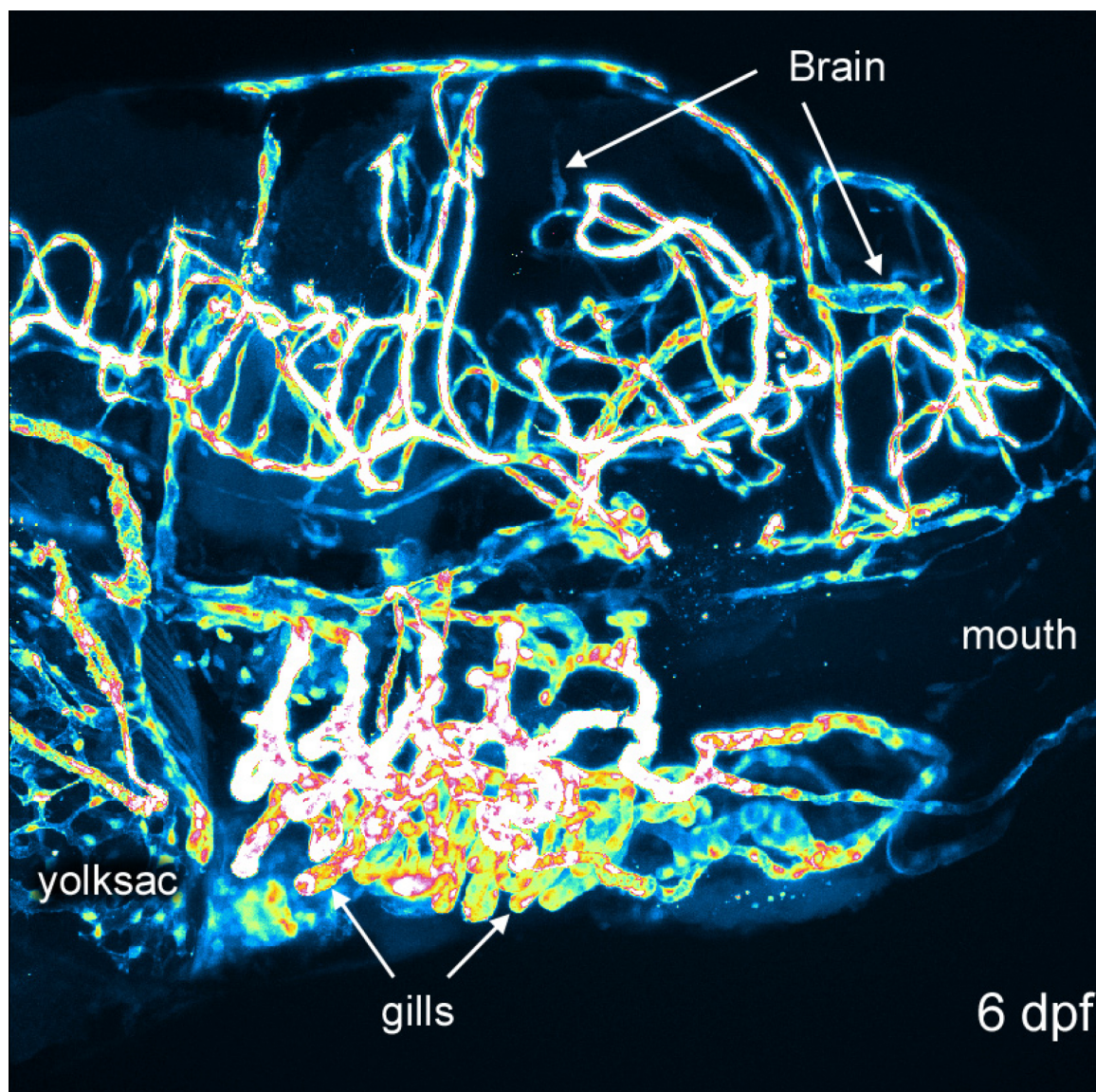


**Figure 2. Step-by-step 3D reconstruction of a confocal image stack.** **A)** Open file (4104.1.ids) loaded within Fiji using Plugins>LOCI>Bioformat to select. **B)** After finding a slice with the region of interest, threshold adjustment is selected as shown. **C)** Threshold is adjusted to 214 using the top slider and apply is selected. **D)** 3D viewer is called as shown. **E)** The 3D reconstruction is shown of a zebrafish with the eye intact, for orientation. **F)** The image has been zoomed and rotated. **G)** A 360 degree rotation movie is made as shown. [Please click here to view a larger version of this figure.](#)



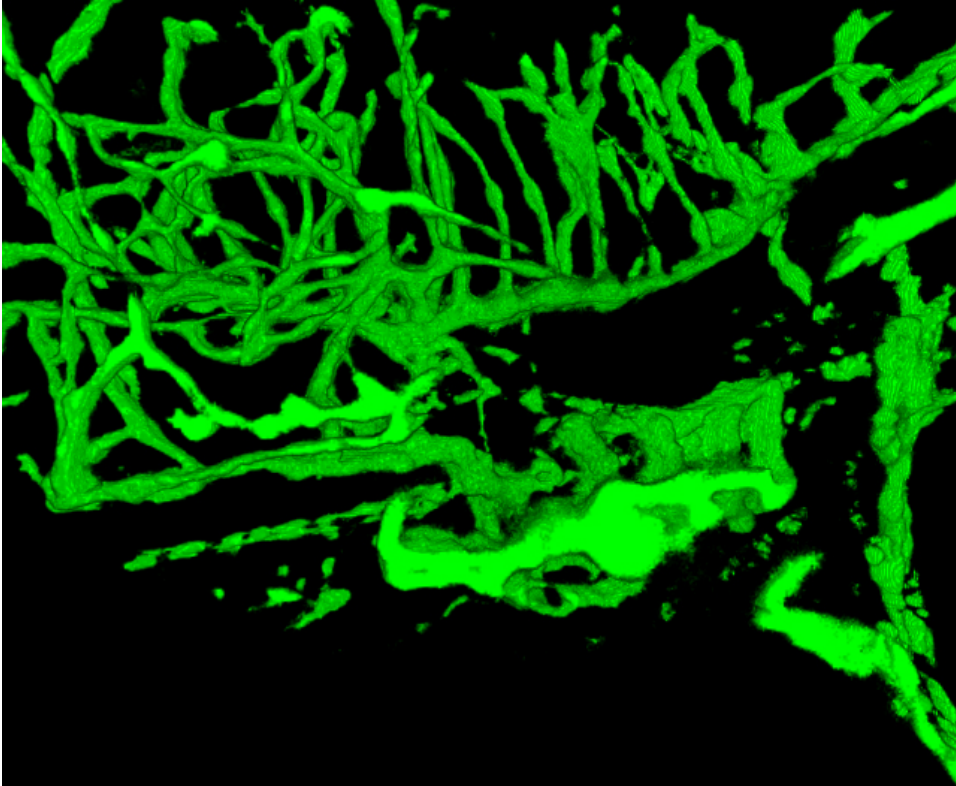


**Figure 3. Perspectives from 3D reconstruction.** **A)** Medial perspective of 6 dpf embryo imaged with 10x objective, mouth is on the right, not gills inside mouth. **B)** Lateral of the same embryo, note fin is a loop in the middle. **C)** Same embryo imaged with 20x objective, medial perspective, note gill resolution. **D)** Lateral perspective of 20x objective imaging. The fin is on the right edge of the panel. **E)** Antero-medial view of 20x objective imaging, note gills inside mouth. **F)** Abdomen of the same embryo imaged with a 20x objective, head it to the right. Note vasculature on the yolk sac at the bottom right. [Please click here to view a larger version of this figure.](#)

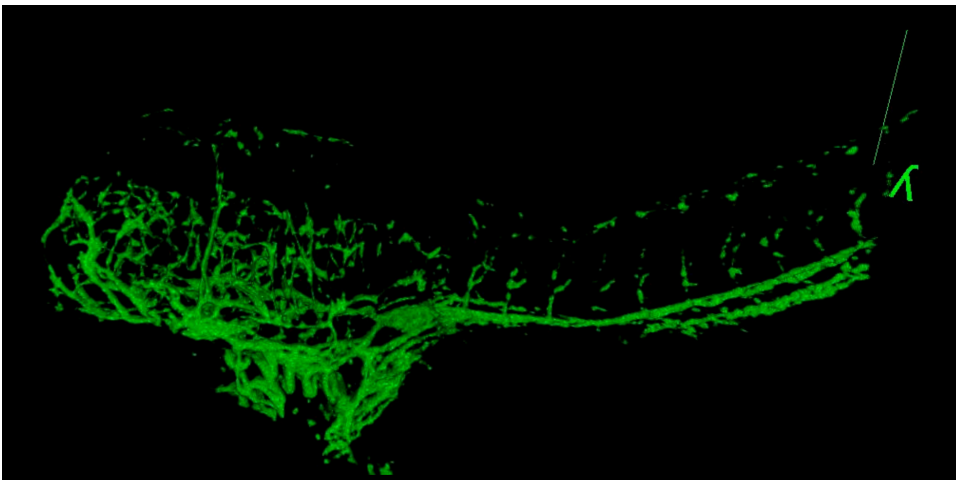


**Figure 4. Intensity differences in 6 dpf embryo.** Image of a 6 dpf reconstruction using a pseudocolor look-up-table for signal intensity. Mouth, brain, gills and yolksac are labeled for orientation. [Please click here to view a larger version of this figure.](#)





**Figure 5. Movie of reconstructed vascular system in a 4 dpf zebrafish.** The fish was imaged at 2.5  $\mu\text{m}$ . The images were from imaging one half of the embryo. Compare vascular structures with structures in a GSI-treated zebrafish provided in **Figure 6**. Note the lower density of blood vessels in the head and larger gills. (See the "Zfish\_spin.avi" supplemental file under Downloads)



**Figure 6. 3D Movie of vascular system in a GSI-treated embryo at 4 dpf.** The fish was imaged at 2.5  $\mu\text{m}$  through from lateral to midline. Compare vascular structures with the control 4 dpf fish shown in **Figure 5**. The arched back and smaller size are typical in embryos treated with this chemical. (See the "GSI-treated\_4dpf\_fish.avi" supplemental file under Downloads)

## Discussion

The methods described here provide a foundation for visual studies of the vascular system in developing zebrafish. Live specimens can be used to assess physiological parameters, such as heart rate and heart stroke volume, while fixed samples can be used for high-resolution confocal imaging. *Drosophila* and *C. elegans* allow for whole body imaging, but zebrafish are vertebrates and provide a useful model for vertebrate tissues, including an endothelial cell-lined vascular system. These studies can incorporate significant transgenic lines and genomic resources from the zebrafish research community. 3D reconstruction and rendering of confocal images from embryonic zebrafish, as described here, allow for a systems biology approach to vascular branching and blood vessel density that is not possible with larger animal models such as rats and mice. Further, as amniotes zebrafish develop in a modifiable environment (E3 buffer), where one can easily add chemicals that inhibit specific

enzymes or other processes that affect vascular development. The concentration and timing of chemical delivery can be altered, enabling the researcher to fine-tune treatment conditions.

### 1. Modifications and troubleshooting

Modifications to this system can incorporate transgenic lines of zebrafish that express EGFP or other fluorescent proteins in a variety of tissue, organ or region specific patterns<sup>10</sup>. Further, analysis of neovascular changes in the zebrafish retina has recently been published<sup>5</sup>. Problems with pigmentation in older embryos and adult zebrafish can be compensated by crossing with transgenic lines that do not produce scale pigments or retinal pigment. Problems with diminished fluorescence typically result from inappropriate fixation conditions. Paraformaldehyde (4%) for 1 day is optimal, but stronger fixatives, such as glutaraldehyde, osmium tetroxide or alcohol, may destroy EGFP fluorescence. After fixation, embryos should be kept in PBS at 4 °C and always protected from direct sunlight.

### 2. Limitations of this technique

The quality and resolution of 3D renderings produced with this protocol depend on the quality of images generated. Light penetration through these embryos is limited to the mid-sagittal plane using a standard confocal microscope. This aspect of imaging limits the depth of imaging in older embryos and adults, but more advanced multi-photon microscopy systems allow for imaging at greater depths.

### 3. Significance with respect to existing methods

This protocol provides an approach to the analysis of blood vessel networks on a systems level that can incorporate an entire animal. Earlier representations of such data often relied on series of images laid out together, but 3D rendering provides better resolution of the spatial relationships involved.

### 4. Future applications

New developments in imaging and tissue processing will provide many new applications for these methods that may include making older embryos or adults transparent<sup>11-14</sup>. Enhanced transparency will greatly increase tissue penetration by confocal and multi-photon lasers. Further, as the speed of cameras and photomultiplier tubes increase it may soon be possible to produce 3D renderings of fish in real-time, providing a 4<sup>th</sup> dimension of analysis.

### 5. Critical steps

A critical step in this protocol is preparation for imaging, which includes proper fixation. Imaging should be done as soon as possible after fixation with high quality objectives that have the best numeric apertures available. Resolution depends on the imaging system used, so high quality systems are generally better. Generating 3D renderings is memory intensive for so newer, high-end computers with a large amount of memory and good graphics processors are recommended.

The visual biology system described here has been optimized for transgenic zebrafish that express EGFP in vascular endothelial cells, though these methods can be adapted to transgenic embryos that express GFP, or other fluorescent proteins, in populations of neurons, muscles, glands or any number of other cells. The major advantage in working with this system is the ability to study what is happening in the entire embryo at any time during this developmental period, in fixed and/or live animals.

## Disclosures

There is nothing to disclose.

## Acknowledgements

The authors thank past and present members of our laboratories who helped develop these techniques. Partial funding provided to DE by a grant from the California Institute for Regenerative Medicine/CIRM (RN1-00538).

## References

1. Staudt, D., Stainier, D. Uncovering the molecular and cellular mechanisms of heart development using the zebrafish. *Annu Rev Genet.* **46**, 397-418, doi: 10.1146/annurev-genet-110711-155646 (2012).
2. Westerfield, M. in *The Zebrafish Book*. University of Oregon Press (2007).
3. Schindelin, J. *et al.* Fiji: an open-source platform for biological-image analysis, *Nat Methods.* **9**, 676-682, doi: 10.1038/nmeth.2019 (2012).
4. Cameron, D.J. *et al.* Alzheimer's-related peptide amyloid- $\beta$  plays a conserved role in angiogenesis. *PLoS ONE.* **7**, e39598, doi: 10.1371/journal.pone.0039598 (2012).
5. Cunvong, K., Huffmire, D., Ethell, D.W., Cameron, D.J. Amyloid- $\beta$  increases capillary bed density in the adult zebrafish retina. *Invest Ophthalmol Vis Sci.* **54**, 1516-1521, doi: 10.1167/iovs.12-10821 (2013).
6. Jin, S.W., Beis, D., Mitchell, T., Chen, J.N., Stainier, D.Y. Cellular and molecular analyses of vascular tube and lumen formation in zebrafish. *Development.* **132**, 5199-5209 (2005).
7. Lawrence, C. The husbandry of zebrafish (*Danio rerio*): a review. *Aquaculture.* **269**, 1-20 (2007).
8. Hagedorn, M., Kleinhans, F.W., Artemov, D., Pilatus, U. Characterization of a major permeability barrier in the zebrafish embryo. *Biol Reprod.* **59**, 1240-1250 (1998).
9. Schmid, B., Schindelin, J., Cardona, A., Longair, M., Heisenberg, M. A high-level 3D visualization API for Java and ImageJ. *BMC Bioinformatics.* **11**, 274, doi: 10.1186/1471-2105-11-274 (2010).

10. Opitz, R. *et al.* Transgenic zebrafish illuminate the dynamics of thyroid morphogenesis and its relationship to cardiovascular development. *Dev Biol.* **372**, 203-216, doi: 10.1016/j.ydbio.2012.09.011 (2012).
11. Gleave, J.A. *et al.* Neuroanatomical phenotyping of the mouse brain with three-dimensional autofluorescence imaging. *Physiol Genomics.* **44**, 778-785, doi: 10.1152/physiolgenomics (2012).
12. Chung, K. *et al.* Structural and molecular interrogation of intact biological systems. *Nature.* **497**, 332-337, doi: 10.1038/nature12107 (2013).
13. Markaki, Y., Smeets, D., Cremer, M., Schermelleh, L. Fluorescence in situ hybridization applications for super-resolution 3D structured illumination microscopy. *Methods Mol Biol.* **950**, 43-64, doi: 10.1007/978-1-62703-137-0\_4 (2013).
14. Walter, T.J., Sparks, E.E., Huppert, S.S. 3-dimensional resin casting and imaging of mouse portal vein or intrahepatic bile duct system. *J Vis Exp.* **68**, e4272, doi: 10.3791/4272 (2012).