

REVIEW

 OPEN ACCESS



## Vaccination in preterm and low birth weight infants in India

Santosh Soans<sup>a</sup>, Attila Mihalyi<sup>b</sup>, Valerie Berlaimont<sup>c</sup>, Shafi Kolhapure<sup>d</sup>, Resham Dash<sup>e</sup>, and Ashish Agrawal<sup>f</sup>

<sup>a</sup>Paediatrics, AJ Institute of Medical Sciences, Mangalore, India; <sup>b</sup>Medical Affairs and Clinical R&D, GSK Vaccines Europe, Wavre, Belgium; <sup>c</sup>Global Medical Affairs, GSK, Wavre, Belgium; <sup>d</sup>Medical Affairs Department, GSK, Mumbai, India; <sup>e</sup>Medical Affairs Department, GSK, Bengaluru, India; <sup>f</sup>Medical Affairs Department, GSK, Hyderabad, India

### ABSTRACT

In India, the high neonatal and infant mortality rate is due in part to an increasing number of preterm and low birth weight (LBW) infants. Given the immaturity of immune system, these infants are at an increased risk of hospitalization and mortality from vaccine-preventable diseases (VPDs). In this narrative review, we screened the scientific literature for data on the risk of VPDs, vaccination delay and factors related to it in Indian preterm and LBW infants. Although routine childhood vaccinations are recommended regardless of gestational age or birth weight, vaccination is often delayed. It exposes these infants to a higher risk of infections, their associated complications, and death. After-birth complications, lack of awareness of recommendations, vaccine efficacy and effectiveness and concerns related to safety are some of the common barriers to vaccination. Awareness campaigns might help substantiate the need for (and value of) vaccination in preterm and LBW infants.

### PLAIN LANGUAGE SUMMARY

#### What is the context?

- In India, the high neonatal mortality rate is due in part to an increasing number of preterm and low birth weight infants.
- Affected infants have a poorly developed immune system and are more susceptible to contracting vaccine-preventable diseases.
- The Indian Academy of Pediatrics recommends vaccination according to the same schedule used for full term infants, following chronological (not gestational) age.
- Delays in vaccinations increase the risk of preventable infections.

#### What is new?

- Our review of the scientific literature shows that, in India:
  - infections have more serious consequences in preterm and low birth weight infants
  - delays to vaccinate affected infants are common, mostly due to safety and effectiveness concerns from parents and healthcare practitioners.

#### What is the impact?

- Improving maternal nutritional status and immunization, and perinatal care could help reduce the number of preterm and low birth weight infants.
- Combining maternal immunization with vaccination of affected infants can confer safe and effective protection.
- Awareness campaigns for parents and healthcare practitioners could address the issue of vaccination delay in preterm and low birth weight infants in India.

### ARTICLE HISTORY

Received 17 September 2020

Revised 21 November 2020

Accepted 15 December 2020

### KEYWORDS

Neonatal; preterm; low birth weight; immunization; India; prematurity; infectious disease; vaccination

## Introduction

Preterm birth and low birth weight (LBW) in newborns is a source of significant global public health concern.<sup>1</sup> Although LBW often characterizes preterm babies, the two terms cannot be used interchangeably.<sup>2</sup> World Health Organization (WHO) defines preterm newborn as birth before 37 weeks of gestation and further categorizes it into extremely preterm (<28 weeks), very preterm (28–32 weeks) and moderate to late preterm (32–37 weeks).<sup>3</sup> LBW is defined as weight at birth of <2,500 g and is categorized into very LBW (<1,500 g) and extremely LBW (<1,000 g).<sup>4</sup>

Preterm birth can be either spontaneous or induced (e.g. elective cesarean or other non-medical reasons).<sup>5,6</sup> Correspondingly, LBW could be associated with preterm birth, or could be due to restricted fetal growth, or a combination of both.<sup>7</sup> Risk factors for prematurity and LBW include undernutrition, genetics, infections, underlying comorbidities (e.g., diabetes), maternal history of multiple pregnancies, chronic maternal stress induced by infections and inflammation, socioeconomic factors, and lifestyle choices of the mother (e.g., smoking).<sup>6,8</sup>

Preterm and LBW infants are at a higher risk of infections and death compared to full-term and normal birth weight

infants.<sup>9</sup> The major risk factors are perinatal infections, prolonged hospitalization after birth, iatrogenic complications of lifesaving therapies, low levels of circulating maternal antibodies, and an immature immune system.<sup>9</sup> Specifically, the immaturity of the immune system is known to increase with decreasing gestational age and birth weight.<sup>10–12</sup> Perinatal infections could be fatal and are associated with long-term sequelae that can lead to impaired neuro-developmental functioning, inhibited growth, chronic diseases and long-term physical health consequences.<sup>6,10–12</sup>

Increasing numbers of preterm and LBW newborns every year could add to the disease burden on healthcare systems and individual families, depending on the setting.<sup>1,6,8,13</sup> According to the WHO, more than 10% of infants (i.e., ~15 million infants per year) were born preterm and 15%–20% of infants (i.e., >20 million infants per year) were born with LBW in 2014–2015.<sup>1,2,14</sup> Preterm birth directly contributes to neonatal mortality, accounting for nearly 1 million deaths every year,<sup>1</sup> while LBW is a major predictor of mortality and morbidity in preterm children.<sup>1</sup> Highest levels of neonatal mortality and morbidity are reported in low- and middle-income countries, with Africa and Asia being responsible for the majority of this public health burden.<sup>15,16</sup> In 2018, approximately 50% of all deaths under 5 years of age were reported from just five countries: Democratic Republic of the Congo, Ethiopia, India, Nigeria, and Pakistan. Among these countries, about 33% of deaths were reported in Nigeria and India alone.<sup>17</sup>

## The Indian context

In 2017, India recorded approximately one million deaths (20% of the global) among children under 5 years of age.<sup>18</sup> Of these, 0.57 million were neonatal deaths in which the reported causes were preterm birth (27.7%), encephalopathy due to birth asphyxia and trauma (14.5%), lower respiratory infections (11.0%), congenital birth defects (8.6%), sepsis and other infections (6.1%), hemolytic disease and jaundice (3.2%), diarrheal diseases (2.7%), tetanus (0.7%), other disorders (22.0%), and other causes (3.5%).<sup>18</sup> This situation is alarming as India accounts for 23.4% of the global preterm births.<sup>14</sup> Estimates of LBW infants are notable: during 2013–2014, amongst approximately 19 million newborns,<sup>19</sup> 68.7% were weighed at birth and among these, 18.6% were LBW (i.e., approximately 2.43 million births).<sup>20</sup>

The majority of deaths in children under 5 years of age and morbidity associated with infectious diseases can be averted by timely interventions including adequate nutrition, clean water, appropriate maternal care during pregnancy and immunization of the mother and infant.<sup>17</sup> The WHO and the Advisory Committee on Vaccines and Immunization Practices of the Indian Academy of Pediatrics (IAP) recommend that all infants receive immunization, regardless of any restrictions based on gestational age or birth weight, with the qualified exception of the hepatitis B vaccine as the birth dose is not counted toward the full schedule due to a reduced immune response.<sup>21–23</sup> Table 1 provides an overview of the recommended vaccines in children ≤12 months of age.

## Rationale of the review

Despite the existence of vaccination recommendations, several studies in high-income countries have reported either a significant delay or a complete lack of immunization in preterm infants.<sup>47–50</sup> The situation is unlikely to be different in India, as a high level of vaccine-preventable disease (VPD) burden in infants or children persists.<sup>51</sup> Within this context, there is a need to better understand the factors and barriers related to the absence or delay in vaccination among preterm and LBW infants. This information could help bridge existing knowledge gaps in the scientific community, specifically among healthcare providers (HCPs) who are perceived as the most trusted advisors and influencers of vaccination decisions.<sup>52</sup>

A recent publication summarizing practical issues surrounding vaccination in preterm infants lends support to the implementation of existing vaccination recommendations for preterm and LBW infants in India.<sup>53</sup> However, information on the extent of vaccination delay in preterm and LBW infants has not been previously summarized. In this review, we outline the rationale for immunization and highlight the risks of VPDs in preterm and LBW infants. We also provide an overview of recommended vaccinations, with a focus on whether efficacy/effectiveness and safety data are available in these populations. Lastly, we present the caveats linked to different vaccination strategies that could be utilized to mitigate the burden of VPDs in preterm and LBW infants in India. Figure 1 elaborates on the findings in a form that could be shared with patients by HCPs.

## Characteristics of the immune system of preterm and LBW infants

Neonates predominantly rely on their first line of defense (physical barrier) and then innate immune response rather than adaptive immune response. At birth, both immune defense mechanisms are immature.<sup>54</sup> This immune system immaturity is amplified in infants born preterm and in those with LBW, due to several deficiencies (Table 2).

Defense against pathogens consists of physical barriers, such as keratinized skin and mucous membranes lining the respiratory and gastrointestinal tracts, and chemical barriers containing various enzymes and other substances that elicit a direct antimicrobial action or inhibit microbial adherence to body surfaces.<sup>55</sup> Compared to full-term infants, this barrier is undeveloped in preterm and LBW infants, making it susceptible to ruptures and therefore serving as an inefficient defense barrier.<sup>55</sup> Furthermore, antimicrobial peptides-producing flora are reduced in number within the mucosal barrier of the respiratory and gastrointestinal tracts, thus facilitating the penetration of pathogens and increasing the risk of infection.<sup>57</sup>

When pathogens cross the first line of defense, the innate immune response is triggered through several pathways. This innate immune response is partial in preterm and LBW infants due to availability of smaller number of neutrophils compared to full-term and normal birth weight infants. Neutrophils generate oxygen radicals that facilitate intracellular killing of pathogens and can also perform phagocytosis.<sup>55,56,58</sup> Similarly, a smaller pool of monocytes is available in preterm and LBW infants.

**Table 1.** Vaccination recommendations and overview of availability of immunogenicity and safety of recommended vaccinations for preterm and LBW infants ≤12 months of age.

Vaccine <sup>t</sup>	Immunogenicity/Effectiveness										Safety	
	Recommended by WHO <sup>24</sup>	Europe (EDC) <sup>25</sup>	USA (CDC) <sup>26,27</sup>	Canada <sup>28</sup>	Australia (ATAGI) <sup>29</sup>	India (IAP) <sup>21</sup>	Included in the Indian NIP <sup>22</sup>	Age (chronological age) recommendation in India <sup>21,22</sup>	Preterm (<37 weeks) <sup>±</sup>	LBW (<2,500 grams) <sup>±</sup>	Preterm (<37 weeks) <sup>±</sup>	LBW (<2,500 grams) <sup>±</sup>
BCG	Yes	Yes <sup>5</sup>	n.a	n.a	n.a	Yes	Yes	At birth or as early as possible till one year of age	Yes <sup>10</sup>	Yes <sup>30</sup>	Yes <sup>30</sup>	Yes <sup>30</sup>
Hepatitis B	Yes	Yes	Yes	Yes	Yes	Yes	Yes	First dose at birth or as early as possible within 24 hours	Yes <sup>31,32</sup>	Yes <sup>23,31</sup>	Yes <sup>31,32</sup>	Yes <sup>23</sup>
OPV – 0	Yes	n.a	n.a	n.a	n.a	Yes	Yes	At birth or as early as possible within the first 15 days	Yes <sup>33</sup>	n.a.	Yes <sup>33</sup>	n.a.
OPV – 1, 2, 3	Yes	n.a	n.a	n.a	n.a	Yes	Yes	At 6 weeks, 10 weeks and 14 weeks (OPV can be given till 5 years of age)	Yes <sup>34</sup>	n.a.	Yes <sup>34</sup>	n.a.
Fractional IPV	Yes	Yes	Yes	n.a	n.a	Yes	Yes	Two fractional doses at 6 and 14 weeks of age	Yes <sup>35,36</sup>	n.a.	Yes <sup>36</sup>	n.a.
Pentavalent combination (DTaP-Hib-Hep B)	n.a	Yes	n.a	n.a	n.a	Yes	Yes	At 6 weeks, 10 weeks and 14 weeks (can be given till one year of age)	n.a.	n.a.	n.a.	n.a.
Hexavalent combination (DTaP-Hib-IPV-Hep B)	n.a	Yes	n.a	Yes	Yes	No	No	n.a.	Yes <sup>37,38</sup>	Yes <sup>37,38</sup>	Yes <sup>37,38</sup>	Yes <sup>37,38</sup>
PCV	Yes	Yes	Yes	Yes	Yes	Yes (select states)	Yes (select states)	At 6 weeks and 14 weeks. Booster dose at 9–15 months of age.	Yes (PCV7; PCV10; PCV13) <sup>39–41</sup>	Yes (PCV7, PCV10) <sup>39,40</sup>	Yes <sup>41</sup>	Yes <sup>39</sup>
Rotavirus	Yes	Yes	Yes	Yes	Yes	Yes (select states)	Yes (select states)	At 6 weeks, 10 weeks & 14 weeks (can be given till one year of age)	Yes <sup>42–45</sup>	n.a.	Yes <sup>42–45</sup>	n.a.
Influenza	No	No	n.a	Yes	Yes	No	No	6 months–5 years	Yes <sup>46</sup>	Yes <sup>46</sup>	Yes <sup>46</sup>	Yes <sup>46</sup>
Measles, mumps, rubella, varicella <sup>f</sup>	n.a	Yes	Yes	Yes	Yes	Yes	Yes	9 months–12 months	n.a.	n.a.	n.a.	n.a.

<sup>t</sup>Vaccinations should be administered to preterm and LBW infants according to the recommended schedule at the discretion of the physician

<sup>y</sup>The data presented in the Table is a comparison of recommendations for the UK and Germany

<sup>±</sup>For preterm infants only

<sup>5</sup>Limited evidence in infants with a gestational age of <31 weeks and very LBW infants

<sup>6</sup>For infants in areas of the country with TB incidence ≥ 40/100,000. Infants with a parent or grandparent born in a high incidence country

<sup>f</sup>Individual vaccine recommendations are reported for measles, mumps, rubella and varicella vaccines and not combination vaccines

ATAGI: Australian Technical Advisory Group on Immunization; BCG: Bacillus Calmette-Guérin vaccine; CDC: Centers for Disease Control and Prevention; EDC: Europe Centre for Disease Prevention and Control; IAP: Indian Academy of Pediatrics; NIP: National Immunization Program; LBW: low birth weight; TB: tuberculosis; OPV: oral polio vaccine; IPV: inactivated polio vaccine; DTaP: diphtheria, tetanus, pertussis vaccine; Hib: *Hemophilus influenzae* type b; Hep B: hepatitis B; PCV-7, –10, –13: pneumococcal conjugate vaccine, –7 valent, –10 valent and –13 valent; MR: measles and rubella; MMR: measles and rubella; MMRV: measles, mumps, rubella with varicella; n.a.: not available; WHO: World Health Organization

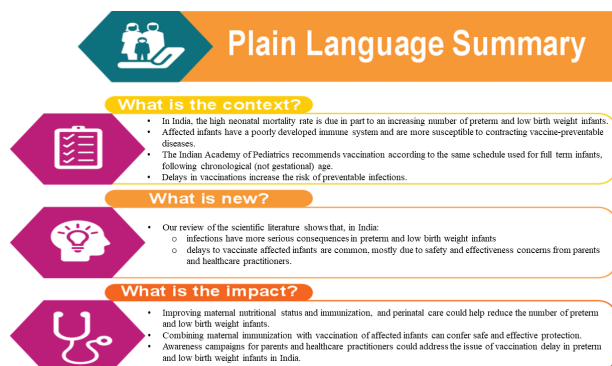


Figure 1. Plain language summary.

Monocytes are capable of phagocytosis, secretion of cytokines or chemokines and antigen presentation, and regulate the activation of B-cells and T-cells, which are integral parts of the adaptive immune response.<sup>55,56</sup> Consequently, preterm and LBW infants are at a high risk of infection (Table 2).

Intrauterine inflammation, which may cause premature immune activation and cytokine production, directly contributes to preterm birth,<sup>56</sup> and may lead to immune tolerance and reduced immune function in preterm and LBW newborns. Furthermore, medical interventions at the time of delivery can impact immune development and function. For example, antenatal corticosteroid treatment to prevent newborn respiratory disease is associated with reductions in lymphocyte proliferation, cytokine production and an increased risk of infection.<sup>56</sup>

Soluble proteins such as immunoglobulins (Ig) and peptides facilitate phagocytosis and elicit antimicrobial properties. The production of soluble proteins by the fetus is limited and thus adaptive immunity is mostly provided through maternal antibodies. Maternal IgG antibodies are transferred to the fetus starting at approximately 17 weeks of gestation, with cord-blood IgG levels similar to maternal titers after 32 weeks of gestation and up to 2-fold higher at term birth.<sup>59,60</sup> Due to this, preterm infants have low levels of circulating maternal IgG as a function of gestational age at birth. This leads to a higher susceptibility of infants to contract infections, including those that can be prevented by vaccinations.<sup>59,61</sup>

### VPDs in preterm and LBW infants

Newborns usually contract infections either in the perinatal or the postpartum period. Exposure to infections is especially critical in preterm and LBW infants because of their immature immune system and inadequate levels of maternal antibodies.<sup>54–56,59</sup> This aspect is depicted in Figure 2A for reference. Data on the risk of VPDs among preterm and LBW infants in India are lacking, therefore we report information from other relevant countries (Table 3). In comparison to full-term and normal birth weight infants, preterm and LBW infants are at an increased risk of hospitalization and mortality from VPDs such as diphtheria,<sup>62</sup> influenza,<sup>68</sup> invasive pneumococcal disease,<sup>39</sup> bacterial meningitis,<sup>66</sup> pertussis,<sup>64,65,69</sup> bacterial and viral pneumonia,<sup>66</sup> rotavirus gastroenteritis<sup>67</sup> and tetanus.<sup>63</sup> Importantly, the literature suggests that an increased risk of infection positively

correlates with the degree of prematurity and LBW.<sup>66,70</sup> Specifically, infection of the very and extremely LBW infants with opportunistic and aggressive multidrug-resistant pathogens often results in death.<sup>70</sup>

### Vaccination programs and timing in preterm and LBW infants

Published literature suggests that vaccination in preterm and LBW infants is delayed despite the existence of recommendations.<sup>47–50</sup> Due to this, the risk of complications and mortality from preventable infections is multiplied as the susceptibility window to infections is increased from the time of birth.<sup>69</sup> Vaccination delay or refusal of vaccines for preterm and LBW infants appears to be a prevalent issue in India as documented from several studies.<sup>71–73</sup> In these studies, delays in timely vaccination for each vaccine was defined as administration of the vaccine dose after 28 days of the minimum recommended age, meaning that vaccination was categorized as delayed if given on day 29 or later for Bacillus Calmette-Guerin (BCG), 71 days or later (after 10 completed weeks) for diphtheria-pertussis-tetanus (DPT)-first dose (DPT-1) and for DPT-third dose (DPT-3), when the infant was vaccinated at >18 weeks of age.<sup>71–73</sup> For measles, delayed vaccination was defined as having received the vaccine after 4 weeks of recommended/due-time, i.e. after 9 completed months of age (measles is recommended at 9 months of age).<sup>74</sup> In the first prospective study, almost half of the infants <33.5 weeks of gestational age (very preterm) and weighing <1,500 g (very LBW) were without immunization, while 62.5% of the remaining infants had a documented delay in immunization.<sup>72</sup> In the second study, data from the National Family and Health Survey-4 revealed that LBW infants with a birth weight <2,000 g had higher odds of a delay in receiving the BCG vaccine (adjusted odds ratio [aOR] 2.33, 95% confidence interval [CI] 1.89, 2.89) and the DPT-1 (aOR 1.53, 95% CI 1.26, 1.86) and the first dose of the measles vaccine (aOR 1.36, 95% CI 1.11, 1.67).<sup>71</sup> In a third study, in which 10,644 LBW infants (<2,500 g) were enrolled and followed until 12 months of age, a significantly lower immunization uptake was documented both in terms of the proportion of infants immunized and of the timing of vaccine administration (Figure 3). About 3 out of 10 LBW infants were fully immunized by the age of 1 year (i.e., had received the BCG vaccine, three doses of the DPT vaccine, the oral polio vaccine, and the measles vaccine).<sup>73</sup> There was a delay in the time of administration of the vaccines compared to the recommended timing. The median delay (interquartile range) for the BCG vaccine was 41 (19–75), and for the three doses of the DPT vaccine (DPT-1, DPT-2 and DPT-3) was 30 (12–63), 46 (23–89) and 62 (34–112) days, respectively.<sup>73</sup> For the measles vaccine, the median delay from the recommended timing was 24 (9–46) days.<sup>73</sup>

### Barriers to vaccination in preterm and LBW infants

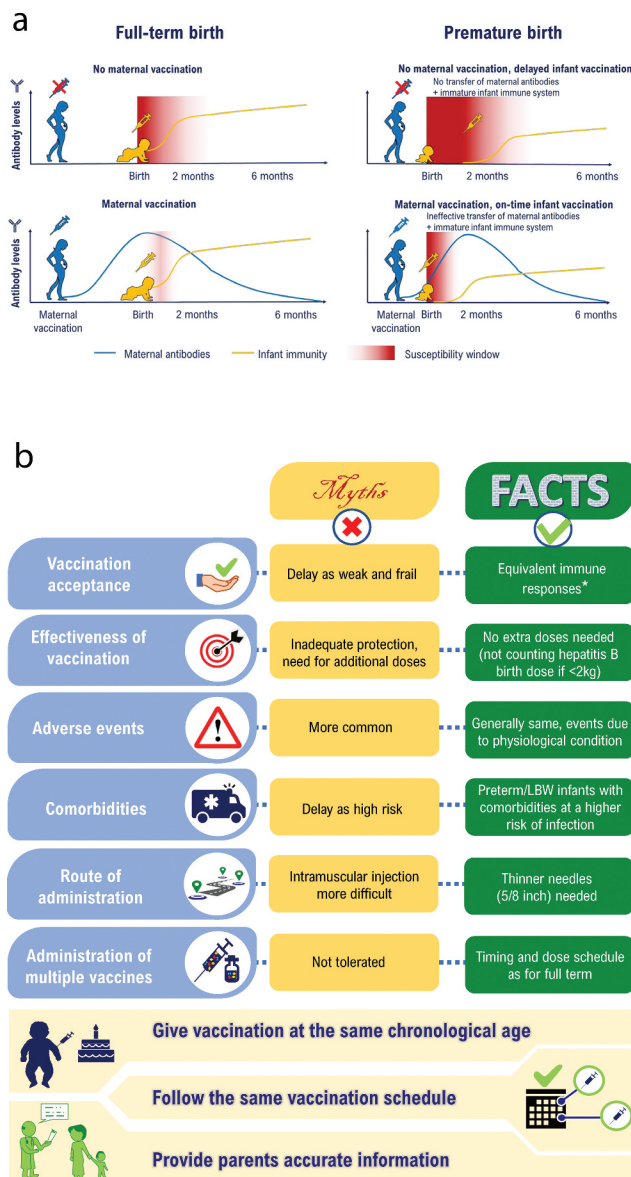
Overall in India, several barriers to infant vaccination according to the recommended schedule have been documented. Vaccine hesitancy was a common barrier across different age groups.<sup>52,75,76</sup>

**Table 2.** Characteristics of the immune response in preterm and LBW infants<sup>10,54–56</sup>.

Type of immune response	Role at nominal level	Characteristics in preterm and LBW infants
<b>Innate immunity</b>		
Soluble proteins and peptides <sup>10,56</sup>	<ul style="list-style-type: none"> <li>• Able to opsonize pathogens thus aiding phagocytosis and kill pathogens with their antimicrobial properties</li> <li>• Protective antibody against viruses, bacteria and anti-toxins</li> </ul>	<ul style="list-style-type: none"> <li>• Limited production leads to preterm infants experiencing limited exposure to breast milk that contains antimicrobial peptides</li> <li>• Limited production</li> <li>• Low levels of maternal IgG (increases with fetal age)</li> <li>• Reduced production in preterm infants and reduced exposure through breast milk</li> <li>• Found at lower concentrations in preterm infants</li> </ul>
IgG		
APPs <sup>10,56</sup> BPI <sup>55</sup>	<ul style="list-style-type: none"> <li>• Destroy pathogens via diverse mechanisms</li> <li>• Neutralizes the lipopolysaccharide endotoxin and is cytotoxic to gram negative bacteria</li> </ul>	<ul style="list-style-type: none"> <li>• Lower activity</li> <li>• Reduced number of cells compared to full-term infants</li> <li>• Reduced pathogen-killing abilities</li> <li>• Deficient in production of C1, C4 (classical pathway) and factor B (alternative pathway)</li> <li>• Deficient in pattern-recognition receptor MBL</li> <li>• MBL could be associated with particular deleterious effects in preterm infants</li> </ul>
NK cells <sup>55</sup>	<ul style="list-style-type: none"> <li>• Produce cytotoxicity and lyse infected cells or antibody-sensitized cells</li> </ul>	<ul style="list-style-type: none"> <li>• Low production of GM-CSF and G-CSF hormones</li> <li>• L-ficolin production and function reduced</li> </ul>
Classical, alternative and lectin complement pathways <sup>54–56</sup>	<ul style="list-style-type: none"> <li>• MBL is a well characterized activator of the lectin pathway in antibody deficient neonates</li> <li>• L-ficolin is a major pattern recognition molecule involved in activation of the lectin pathway</li> </ul>	<ul style="list-style-type: none"> <li>• Limited chemotaxis of phagocytes to infectious sites</li> <li>• Have reduced pool including precursors due to reduced glycoprotein hormones G-CSF and GM-CSF</li> <li>• difficulty in migrating to sites of infection due to reduction in expression of adhesion molecules such as L- and P-selectin</li> </ul>
Phagocytes <sup>54</sup> Neutrophils <sup>10,55</sup>	<ul style="list-style-type: none"> <li>• Include neutrophils, monocytes and macrophages</li> <li>• Phagocytose and destroy microorganisms intracellularly by utilizing a variety of toxic substances</li> </ul>	<ul style="list-style-type: none"> <li>• Decreased phagocytic activity of preterm neutrophils</li> <li>• Preterm neonates have decreased respiratory burst</li> <li>• Reduced expression and inducibility of integrins or arrest of cell-rolling and adhesion</li> <li>• Smaller pool of monocytes due to reduced glycoprotein hormones G-CSF and GM-CSF</li> <li>• Reduction in cytokine production <ul style="list-style-type: none"> <li>◦ Low levels of chemotaxis and phagocytosis during infection</li> <li>◦ Reduced ability of costimulatory molecules upregulation</li> <li>◦ Limited capacity to activate B – and T-cells</li> </ul> </li> <li>• Adaptive immune response activation is limited</li> </ul>
Monocytes <sup>10,55,56</sup>	<ul style="list-style-type: none"> <li>• Phagocytose and destroy microorganisms intracellularly by utilizing a variety of toxic substances</li> <li>• Differentiate into macrophages or dendritic cells in tissue</li> </ul>	<ul style="list-style-type: none"> <li>• Maturation of this type of immunity occurs mostly after term birth</li> <li>• All newborns have deficiencies in T-cell activation, cytokine production, cytolytic activity, B cell immunoglobulin production, and cooperation between T and B-cells</li> <li>• Lower absolute numbers</li> <li>• Lower numbers of naive T – and B-cells</li> <li>• Lower IgG concentrations</li> <li>• Decreased stimulation of B-lymphocytes to produce antibodies</li> </ul>
<b>Adaptive immunity</b>		
Overall		
Circulating lymphocytes (B and T-cells) <sup>10,54</sup>	<ul style="list-style-type: none"> <li>• Produce or express cytokines and IgM antibodies</li> </ul>	
T lymphocytes helper (CD4+) <sup>55</sup>	<ul style="list-style-type: none"> <li>• Respond to new antigens by producing or expressing cytokines in their cell membrane</li> </ul>	
Cytotoxic lymphocytes (CD8+) <sup>55</sup>	<ul style="list-style-type: none"> <li>• Activated by MHC class 2</li> <li>• Eradicate lysed cells through clonal expansion of antigen-specific cytolytic cells</li> <li>• Activated by MHC class 1</li> </ul>	<ul style="list-style-type: none"> <li>• Decreased cytotoxic activity</li> <li>• Lower absolute numbers of CD3 and CD8 cells</li> </ul>

APP: antimicrobial proteins and peptides; BPI: bactericidal permeability increasing protein; CD: cluster of differentiation; IgG: immunoglobulin G; IgM: immunoglobulin M; LBW: low birth weight; MBL: mannose-binding lectin; G-CSF: granulocyte colony-stimulating factor; GM-CSF: granulocyte-macrophage colony-stimulating factor; MHC: major histocompatibility complex; NK: natural killer





**Figure 2.** Vaccination in preterm and LBW infants in India (A) Window of susceptibility to disease (B) Barriers to vaccination due to knowledge gaps among HCPs and parents <sup>±, †</sup>. \*Immune response refers to sero-conversion/sero-protection levels<sup>‡</sup>. Vaccination recommendations in the National Immunization Programme (Government of India)<sup>22</sup> and Indian Academy of Pediatrics (optional schedule)<sup>21</sup> is provided in Table 1 <sup>‡</sup>Panel B was created from Table 1 of Sahoo et al. 2020,<sup>53</sup> and the personal opinions of the authors of this manuscript; HCP: healthcare professional; LBW: low birth weight

Several factors were identified as causes of vaccine hesitancy in India: these relate to immunization effectiveness, safety/adverse events, provider belief, attitudes of parents, religious/socioeconomic factors, and policy guidelines regarding vaccination.<sup>52,75</sup> These factors become even more complex in preterm and LBW infants.<sup>53,71–73</sup> Factors of delayed vaccination in preterm and LBW infants were identified in two studies.<sup>71,73</sup> Choudhary et al. and Upadhyay et al. both reported that Islamic religion and young maternal age (<20 years of age) were associated with lower odds of full immunization and higher odds of delayed vaccination for DPT–1. Female sex of the infant, birth weight <2,000 g, delivery by unskilled personnel, higher number of children and a lack of awareness about vaccination risks/benefits among mothers were also associated with lower odds of full immunization. In contrast, a high level of maternal education was strongly associated with improved vaccination status of the infant.<sup>71,73</sup> Across studies, the

main reason for a delay in vaccination was the general lack of awareness among HCPs and parents about vaccination benefits and concerns about possible adverse events due to vaccination in preterm and LBW infants.<sup>71–73,76</sup> To this, we suggest the use of vaccines with published efficacy and safety data in the preterm and LBW infant population (Table 1).

Despite the availability of evidence and clear guidelines related to vaccination in India,<sup>21,22</sup> there are wide knowledge gaps among HCPs and parents regarding the safety and efficacy of vaccines.<sup>53</sup> Further details can be seen in Figure 1B. Several factors were found to influence the attitude of HCPs toward vaccination for preterm and LBW infants. These include the perception of limited vaccine effectiveness, the risk of vaccination-induced serious adverse events and contraindication following postnatal steroid administration.<sup>56</sup> HCPs further perceive that birth weight, current weight, or the level of prematurity should determine the initiation

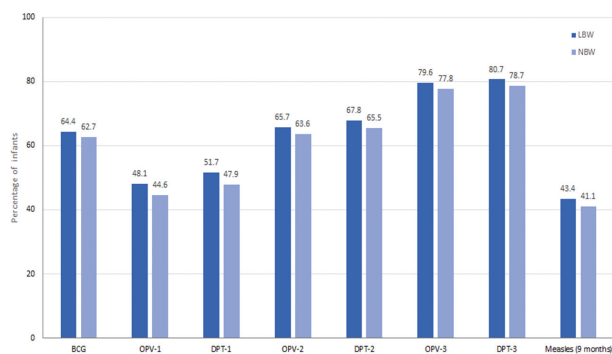
**Table 3.** Risk of vaccine-preventable disease in preterm and LBW infants.

Disease	Outcome	Risk of acquiring disease
Diphtheria	● Increased risk <sup>K</sup> of disease <sup>62</sup>	n.r. <sup>¥</sup>
Tetanus	● Death due to neonatal tetanus in LBW	OR: 2.09 (95%CI: 1.29–3.37) <sup>63</sup>
Pertussis	● Hospitalization in preterm vs. full-term infants	IRR: 1.99 (95%CI: 1.47–2.71) <sup>64</sup>
	● Severe disease with a history of prematurity	OR: 5.00 (95%CI: 1.27–19.71) <sup>65</sup>
Polio	● Increased risk of disease	n.r. <sup>¥</sup>
Hepatitis B	● Increased risk of disease	n.r. <sup>¥</sup>
Invasive pneumococcal disease	● Risk of infection in LBW (<2,500 grams) infants	RR: 2.6 (P = .03) <sup>39</sup>
	● Risk of infection in preterm (<38 weeks) infants	RR: 1.6 (P = .06) <sup>39</sup>
Bacterial meningitis	● Hospitalization in infants weighing <1,000 grams	RR: 1.38 (95%CI: 0.57–3.35) <sup>66</sup>
	● Hospitalization in infants weighing 1,000–1,499 grams	RR: 1.46 (95%CI: 0.88–2.44) <sup>66</sup>
	● Hospitalization in infants weighing 1,500–1,999 grams	RR: 1.55 (95%CI: 1.13–2.12) <sup>66</sup>
	● Hospitalization in infants weighing 2,000–2,499 grams	RR: 1.31 (95%CI: 1.09–1.58) <sup>66</sup>
Bacterial pneumonia	● Hospitalization in infants weighing <1,000 grams	RR: 2.86 (95%CI: 1.83–4.47) <sup>66</sup>
	● Hospitalization in infants weighing 1,000–1,499 grams	RR: 1.67 (95%CI: 1.20–2.33) <sup>66</sup>
	● Hospitalization in infants weighing 1,500–1,999 grams	RR: 1.53 (95%CI: 1.22–1.91) <sup>66</sup>
	● Hospitalization in infants weighing 2,000–2,499 grams	RR: 1.51 (95%CI: 1.32–1.71) <sup>66</sup>
Rotavirus gastroenteritis	● Hospitalization in very LBWs (<1,500 grams)	OR: 2.6 (95%CI: 1.6–4.1) <sup>67</sup>
	● Hospitalization in LBW (1,500–2,499 grams)	OR: 1.6 (95%CI: 1.3–2.1) <sup>67</sup>
Influenza	● Severe disease in children with history of prematurity	OR: 2.53 (95%CI: 1.34–4.77) <sup>68</sup>

<sup>K</sup>Age data reflect a higher proportion of cases in the adolescent and adult populations. These populations could be the source of infection in preterm and LBW infants

<sup>¥</sup>No data was found for these diseases. It can be assumed that there is a high risk of these diseases occurring given the immaturity of the immune system of the preterm and LBW infant

CI: confidence interval; IRR: incidence rate ratio; LBW: low birth weight; OR: odds ratio; P: p-value; RR: relative risk



**Figure 3.** Immunization delay among LBW infants<sup>±#</sup>. <sup>±</sup>Statistically significant difference ( $P < .05$ ) compared to normal birth weight infants was documented for all vaccines. Vaccination was administered according to the National Immunization Programme (Government of India). BCG and OPV-0 at birth, OPV-1/DPT-1 at 6 weeks of age, OPV-2/DPT-2 at 10 weeks of age, OPV-3/DPT-3 at 14 weeks of age and measles at 9 months of age.<sup>21,22</sup> Delayed vaccination for each vaccine was defined as administration of the vaccine dose after 28 days (i.e. 4 weeks) of the minimum recommended age, as per the National Immunization Programme (Government of India).<sup>22</sup> <sup>#</sup>Created from Table 2 of Upadhyay et al. 2017.<sup>73</sup> The reported data were obtained from the rural Haryana region BCG: Bacillus Calmette-Guerin vaccine; DPT: diphtheria, pertussis, tetanus vaccine; OPV: oral polio vaccine; LBW: low birth weight; NBW: normal birth weight

of immunization.<sup>50</sup> The lack of clear vaccination recommendations from HCPs ultimately guides the decision of parents or caregivers of the infant to reject vaccinations.<sup>77</sup> Even if there are clear recommendations, a low education level and awareness of the parent or caregiver could delay vaccination or lead to refusal.<sup>72,76,77</sup> In India, a lack of education for girls and young women, who are socially viewed as the primary caregiver, could undermine immunization efforts.<sup>76</sup> Other factors such as home births in India<sup>71</sup> and the cost of vaccination<sup>73</sup> also tend to qualify as impediments to the vaccination of preterm and LBW infants.

### Strategies to mitigate the burden of VPDs in preterm and LBW infants

Successful treatment of infections in preterm and LBW infants relies on early recognition and diagnosis, which

is known to be challenging.<sup>70</sup> While the majority of infants will have some risk factors, there are several presenting symptoms that are nonspecific.<sup>70</sup> Therefore, it has become imperative to prevent the burden of infectious diseases in preterm and LBW infants. This can be achieved using a two-fold strategy targeting both mothers and their newborn infants.

It is vital to reduce the risks of infection in premature infants through prevention of infections in expectant mothers. It is essential to implement a comprehensive strategy comprising multiple elements such as improving maternal nutritional status, diagnosing and treating pregnancy-related conditions, and providing adequate maternal and perinatal care. The prevention of infections through immunization activities, which are known to be effective in circumventing the risks associated with VPDs, should also be encouraged.<sup>24</sup> Several immunization strategies have been suggested for the protection of newborn infants, the features of which are further discussed.

### Indirect immunization strategies

The use of indirect immunization strategies such as maternal immunization and cocooning have been suggested as relevant strategies to alleviate the burden of VPDs in infants (e.g. tetanus, pertussis, influenza etc.).<sup>24,63–65,78</sup> Vaccination during pregnancy (maternal immunization) can provide protection against VPD for the mother, the developing fetus and the newborn through maternal antibodies transfer via the placenta and subsequently the breast milk.<sup>79</sup> An example is neonatal tetanus, which tends to occur during the first 3–14 days of life and which carries a case fatality rate of 100% in newborns. Through immunization efforts, maternal and neonatal tetanus have been eliminated from India.<sup>80</sup> Pertussis and influenza are other preventable diseases with potentially severe consequences (such as apnea, pneumonia and seizures in newborns)

that can be averted through maternal immunization.<sup>78,81</sup> Maternal immunization provides clear benefits. It is worth noting that the uptake of maternal immunization can however be slow.<sup>82,83</sup> Common reasons include issues of confidence (i.e., fear of adverse pregnancy outcomes, lack of awareness, failure of the HCP to recommend vaccination and convenience/access [including cost]) and vaccine efficacy, driven possibly by the timing of vaccination.<sup>82–84</sup>

Recent studies have suggested that antigen-specific cord-blood antibody titers are greater following maternal immunization with the tetanus, diphtheria, and acellular pertussis vaccine in the second, rather than the third trimester.<sup>85,86</sup> For influenza vaccination, researchers have shown that seasonal influenza vaccination should be given at any stage of pregnancy, with the caveat that it takes 2 weeks after vaccination for the mother to be protected against influenza.<sup>87–90</sup> Public health authorities have also revised their recommendations, with a few of them even recommending vaccinations as early as possible during pregnancy.<sup>89,90</sup> Further research efforts to establish the appropriate timing of vaccinations during pregnancy could strengthen the use of maternal immunization in preventive neonatology.<sup>84</sup>

Other indirect immunization strategies such as cocooning could be considered when maternal immunization is missed or delayed. The IAP recommendation states that immunizing individuals who have regular contacts with a newborn might help reduce the risk of infection in newborns.<sup>78</sup> However, there is little evidence to support the use of this strategy in protecting the extremely preterm and LBW infants. Additionally, cost and logistical barriers could further limit the widespread implementation of this strategy.<sup>91,92</sup>

### Direct immunization of preterm and LBW infants

In preterm and LBW infants, implementing the same vaccination schedule as set forth for full-term and normal birth weight infants appears crucial, as can be seen in the vaccination recommendations (Table 1). Specific guidance regarding the implementation of vaccination when the infant is in the neonatal intensive care unit (NICU) is not explicitly mentioned in the guidelines; there is limited evidence to suggest that vaccination could be considered in the NICU if the infant is stable or after discharge from the NICU in the ward.<sup>93</sup> Table 1 also provides an overview of the main references that provide immunogenicity/efficacy, effectiveness and safety data for the recommended vaccinations specific to the preterm and LBW infant population. This evidence base supports the vaccination of infants regardless of prematurity level or birth weight at the recommended chronological age according to the vaccine-specific prescribing information.

Across the different vaccinations, the degree of immune response may vary in terms of geometric titers in preterm infants, but protective and durable responses are achieved in most cases.<sup>94,95</sup> Studies have shown that, following administration of vaccines, preterm and LBW infants mount an immune response directly proportional to their gestational age and birth weight.<sup>96</sup> Importantly, vaccines display a good safety profile even when given in combination, without compromising the immune response; this could potentially

alleviate concerns of parents or HCPs with respect to safety.<sup>97</sup> In addition, vaccinations recommended for use in healthy infants and children have shown good levels of efficacy, safety, and effectiveness regardless of prematurity or birth weight (Figure 1B).

Among the combination vaccines available, the diphtheria, tetanus, pertussis, hepatitis B, inactivated polio vaccine and *Hemophilus influenzae* type b (DTPa-HBV-IPV/Hib), given alone or with other pediatric vaccines, has a clinically acceptable safety and immunogenicity profile in preterm (>24 weeks) and LBW (as low as 700 g) infants as in full-term infants, although HBV and Hib vaccine responses appeared lower in preterm and LBW infants.<sup>37</sup> The occurrence of post-immunization cardiorespiratory events is influenced by the severity of underlying neonatal conditions, but most tend to resolve spontaneously or require minimal intervention.<sup>37</sup> These data make a strong case for the vaccination of preterm and LBW infants according to the schedule proposed for full-term and normal birth weight infants (i.e., chronological age). However, monitoring of the preterm/LBW infant up to 72 hours after vaccination is recommended.<sup>98</sup> Notably, additional doses of HBV should be administered in infants receiving the first dose during the first days of life if they weigh less than 2,000 g because of a reduced immune response; for preterm infants born to hepatitis B Ag-positive mothers, both Ig and HBV should be given within 12 hours.<sup>24,31,99</sup> The timeliness of vaccination and completion of the primary vaccination series at chronological age rather than gestational age appears crucial to provide the earliest possible protection in preterm and LBW infants.<sup>95</sup> Importantly, we suggest the use of vaccines that have been tested in the preterm and LBW infant population and have robust efficacy and a clinically acceptable safety profile.

### Discussion

The considerations presented in this review have both clinical and public health implications for India. In recent decades, India has seen a significant improvement in neonatal and infant health after the introduction of several initiatives by the Government of India (GOI).<sup>51</sup> India's National Health Policy 2017 set a target of 16 deaths per 1,000 live births for neonatal mortality by 2025,<sup>100</sup> and the GOI has also set a target of less than 10 neonatal deaths per 1,000 live births by 2030 under the India Newborn Action Plan.<sup>101</sup> Within this context, prematurity and LBW in neonates deserve special attention, as a significant number of children born in India are born preterm or have LBW.<sup>14,19</sup> Although a systematic literature search was not included in this review, which is a limitation, it reaches its objective of raising awareness on the importance of reducing the incidence of VPDs in preterm and LBW infants in India through immunization.

Published evidence from studies conducted outside India indeed shows that prematurity and LBW can predispose the infant, given their immunocompromised status, to a high risk of VPDs.<sup>54,56,69,96,102</sup> Reducing the incidence of VPDs in this vulnerable population after birth is the need of the hour. This can be achieved through timely immunization of the mother and newborn. Maternal immunization should be encouraged and there is a large evidence base supporting the safety and



effectiveness of immunization during pregnancy.<sup>84,103</sup> Similarly, vaccines in preterm and LBW infants are equally safe, immunogenic and effective as compared to full-term and normal birth weight infants.<sup>94–96</sup> Generating more evidence on the timing of maternal immunization, as well as identifying and addressing barriers to vaccination uptake, are key challenges to overcome.<sup>84,88</sup>

In India, healthcare institutions advocate that preterm and LBW infants are vaccinated following the same schedule as that of their counterparts who are born full-term with normal birth weights, apart from the hepatitis B vaccine wherein an additional dose is required.<sup>21–23</sup> Notwithstanding these recommendations, studies from India show that preterm and LBW infants are vaccinated with a significant delay,<sup>71,73,76</sup> driven by the clinical judgment of the treating HCP whose recommendation is instrumental in ensuring vaccination. Delays due to true contraindications (e.g., severe combined immunodeficiency disease) are justified, but avoiding risks related to ‘small for gestational age’ or birthweight are often cited as the reason behind vaccination delays. LBW appears to be a strong indicator of vaccination delay. Given that being born preterm is a leading cause of LBW, gestational age could also be recognized as a predictor of vaccination delay.<sup>50</sup> Data specific to vaccination delays in premature infants from India are lacking and are needed to shape the national vaccination policy. In addition, information assessing the relationship between vaccination delay and disease occurrence should be generated through large-scale observational studies. Further studies estimating vaccination coverage in preterm and LBW infants might provide insights on the scale of the problem and the underlying reasons for vaccination delay.

Delayed vaccination increases the susceptibility window to VPDs and their complications.<sup>50</sup> There are several barriers in achieving timely vaccination of preterm and LBW infants in India. Among these, HCP and parent knowledge, perceptions and attitudes to vaccination stand out. The role of HCPs in facilitating immunization uptake is well-documented hence training HCPs to discuss the risks versus benefits of vaccinations with parents, on scientifically validated grounds, seems highly relevant.<sup>50,77</sup> To achieve this, HCPs must regularly acquire up-to-date information on vaccinations in preterm and LBW infants. Besides efficacy and safety, parents tend to worry about the number of vaccinations.<sup>53</sup> Targeted education and awareness initiatives for HCPs and health literacy interventions for parents, with focus on the importance, effectiveness and safety of vaccinations could help bridge immunization gaps in the vulnerable preterm and LBW infant population. In addition, the use of combination vaccines should be encouraged, as it addresses parents’ fears of multiple injections and increases the acceptance and compliance with the vaccination schedule.<sup>97</sup>

## Conclusion

Routine childhood vaccinations can help reduce or eliminate the burden of VPDs and should be given to preterm and LBW babies, regardless of prematurity or birth weight. It is crucial that HCPs are made aware that preterm and LBW infants could be faced with detrimental health effects if vaccinations are not

administered in a timely manner. Inappropriate delays in vaccinating this fragile population should be minimized by ensuring that vaccination discussions are encouraged with families and caregivers at the point of care. These steps should be closely integrated within neonatal and other overall infant health management strategies to increase vaccination compliance and improve health in the fragile population of preterm and LBW infants.

## Acknowledgments

The authors thank Business & Decision Life Sciences platform for editorial assistance and manuscript coordination, on behalf of GSK. Benjamin Lemaire coordinated the manuscript development and editorial support. Amrita Ostawal (Arete Communication UG) provided medical writing support.

## Disclosure of potential conflicts of interest

Santosh Soans declares no financial and non-financial relationships and activities and no conflicts of interest. Attila Mihalyi, Valerie Berlaimont and Shafi Kolhapure are employees of the GSK group of companies, hold shares in the GSK group of companies and declare no other financial and non-financial relationships and activities. Resham Dash and Ashish Agrawal are employees of the GSK group of companies and declare no non-financial conflicts of interest.

## Contributorship

All authors participated in the design of this narrative review, interpretation of the results; and the development of this manuscript. All authors had full access to the data and gave final approval before submission.

## Funding

GlaxoSmithKline Biologicals SA took in charge all costs associated with the development and publication of this manuscript.

## ORCID

Valerie Berlaimont  <http://orcid.org/0000-0003-3850-4477>  
 Shafi Kolhapure  <http://orcid.org/0000-0002-3183-1259>  
 Resham Dash  <http://orcid.org/0000-0002-0332-5535>  
 Ashish Agrawal  <http://orcid.org/0000-0002-6417-3184>

## References

1. World Health Organization. WHA global nutrition targets 2025: low birth weight policy brief. [accessed 2020 May 10]. [https://www.who.int/nutrition/topics/globaltargets\\_lowbirthweight\\_policy\\_brief.pdf](https://www.who.int/nutrition/topics/globaltargets_lowbirthweight_policy_brief.pdf).
2. Blencowe H, Krusevec J, de Onis M, Black RE, An X, Stevens GA, Borghi E, Hayashi C, Estevez D, Cegolon L, et al. National, regional, and worldwide estimates of low birthweight in 2015, with trends from 2000: a systematic analysis. *Lancet Global Health*. 2019;7(7):e849–e60. doi:10.1016/S2214-109X(18)30565-5.
3. World Health Organization. Preterm birth. 2018 [accessed 2020 May 09]. <https://www.who.int/news-room/fact-sheets/detail/preterm-birth>.
4. World Health Organization. Newborns with low birth weight (%). [accessed 2020 May 09]. <https://www.who.int/whosis/whostat2006NewbornsLowBirthWeight.pdf>.
5. Goldenberg RL, Gravett MG, Iams J, Papageorghiou AT, Waller SA, Kramer M, Culhane J, Barros F, Conde-Agudelo A, Bhutta ZA, et al. The preterm birth syndrome: issues to consider in

- creating a classification system. *Am J Obstet Gynecol.* 2012;206(2):113–18. doi:10.1016/j.ajog.2011.10.865.
6. Blencowe H, Cousens S, Chou D, Oestergaard M, Say L, Moller A-B, Kinney M, Lawn J. Born Too Soon: the global epidemiology of 15 million preterm births. *Reprod Health.* 2013;10(Suppl 1):S2. doi:10.1186/1742-4755-10-S1-S2.
  7. Cutland CL, Lackritz EM, Mallett-Moore T, Bardaji A, Chandrasekaran R, Lahariya C, Nisar MI, Tapia MD, Pathirana J, Kochhar S, et al. Low birth weight: case definition & guidelines for data collection, analysis, and presentation of maternal immunization safety data. *Vaccine.* 2017;35(48):6492–500. doi:10.1016/j.vaccine.2017.01.049.
  8. Rogers LK, Velten M. Maternal inflammation, growth retardation, and preterm birth: insights into adult cardiovascular disease. *Life Sci.* 2011;89(13–14):417–21. doi:10.1016/j.lfs.2011.07.017.
  9. Lawn JE, Cousens S, Zupan J. 4 million neonatal deaths: When? Where? Why? *Lancet.* 2005;365(9462):891–900. doi:10.1016/S0140-6736(05)71048-5.
  10. Collins A, Weitkamp JH, Wynn JL. Why are preterm newborns at increased risk of infection? *Arch Dis Child Fetal Neonatal Ed.* 2018;103:F391–4. doi:10.1136/archdischild-2017-313595.
  11. Miller JE, Hammond GC, Strunk T, Moore HC, Leonard H, Carter KW, Bhutta Z, Stanley F, de Klerk N, Burgner DP, et al. Association of gestational age and growth measures at birth with infection-related admissions to hospital throughout childhood: a population-based, data-linkage study from Western Australia. *Lancet Infect Dis.* 2016;16(8):952–61. doi:10.1016/S1473-3099(16)00150-X.
  12. Ray KN, Lorch SA. Hospitalization of early preterm, late preterm, and term infants during the first year of life by gestational age. *Hosp Pediatr.* 2013;3(3):194–203. doi:10.1542/hpeds.2012-0063.
  13. UNICEF/WHO. Low birthweight (LBW) estimates. 2019. [accessed 2020 May 18]. <https://data.unicef.org/topic/nutrition/low-birthweight/>.
  14. Chawanpaiboon S, Vogel JP, Moller A-B, Lumbiganon P, Petzold M, Hogan D, Landoulsi S, Jampathong N, Kongwattanakul K, Laopaiboon M, et al. Global, regional, and national estimates of levels of preterm birth in 2014: a systematic review and modelling analysis. *Lancet Global Health.* 2019;7(1):e37–46. doi:10.1016/S2214-109X(18)30451-0.
  15. Beck S, Wojdyla D, Say L, Betran AP, Merialdi M, Requejo JH, Rubens C, Menon R, Van Look P. The worldwide incidence of preterm birth: a systematic review of maternal mortality and morbidity. *Bull World Health Organ.* 2010;88(1):31–38. doi:10.2471/BLT.08.062554.
  16. United Nations Children's Fund and World Health Organization. Low Birthweight: country, regional and global estimates. New York (USA): UNICEF; 2004 [accessed 2020 April 30]. [https://www.unicef.org/publications/files/low\\_birthweight\\_from\\_EY.pdf](https://www.unicef.org/publications/files/low_birthweight_from_EY.pdf).
  17. World Health Organization. Children: reducing mortality. Geneva (Switzerland): World Health Organization; 2019 accessed 2020 April 30. <https://www.who.int/news-room/fact-sheets/detail/children-reducing-mortality>.
  18. Dandona R, Kumar GA, Henry NJ, Joshua V, Ramji S, Gupta SS, Agrawal D, Kumar R, Lodha R, Mathai M, et al. Subnational mapping of under-5 and neonatal mortality trends in India: the Global Burden of Disease Study 2000–2017. *Lancet.* 2020;395(10237):1640–58. doi:10.1016/S0140-6736(20)30471-2.
  19. The World Bank. World Development Indicators. Birth rate, crude (per 1,000 people) - India. [accessed 2020 May 10]. <https://data.worldbank.org/indicator/SP.DYN.CBRT.IN?locations=IN>.
  20. Ministry of Women and Child Development GoI. Rapid survey on children. New Delhi: India fact sheet (2013–14). [accessed 2020 July 21]. <https://wcd.nic.in/sites/default/files/State%20RSOC.pdf>.
  21. Balasubramanian S, Shah A, Pemde HK, Chatterjee P, Shivananda S, Guduru VK, Soans S, Shastri D, Kumar R. Indian academy of pediatrics (IAP) advisory committee on vaccines and immunization practices (ACVIP) recommended immunization schedule (2018–19) and update on immunization for children aged 0 through 18 years. *Indian Pediatr.* 2018;55(12):1066–74. doi:10.1007/s13312-018-1444-8.
  22. Universal Immunisation Programme. National Health Portal of India. [accessed 2020 10 May]. [https://www.nhp.gov.in/universal-immunisation-programme\\_pg](https://www.nhp.gov.in/universal-immunisation-programme_pg).
  23. World Health Organization. Hepatitis B vaccines: WHO position paper, July 2017 - Recommendations. *Vaccine.* 2019;37(2):223–25. doi:10.1016/j.vaccine.2017.07.046.
  24. World Health Organization. Summary of WHO position papers - recommendations for routine immunization. 2019 [accessed 2020 10 May]. [https://www.who.int/immunization/policy/Immunization\\_routine\\_table1.pdf?ua](https://www.who.int/immunization/policy/Immunization_routine_table1.pdf?ua).
  25. ECDC. United Kingdom and Germany: comparison of recommended vaccinations. 2020 [accessed 2020 August 03]. <https://vaccine-schedule.ecdc.europa.eu/Scheduler/ByCountries?SelectedCountry1Id=171&SelectedCountry2Id=6&IncludeChildAgeGroup=true&IncludeChildAgeGroup=false&IncludeAdultAgeGroup=false>.
  26. CDC. Recommended child and adolescent immunization schedule for ages 18 years or younger. 2020 [accessed 2020 August 03]. <https://www.cdc.gov/vaccines/schedules/downloads/child/0-18yrs-child-combined-schedule.pdf>.
  27. CDC Special Situations: general Best Practice Guidelines for Immunization: best Practices Guidance of the Advisory Committee on Immunization Practices (ACIP). [accessed 2020 August 03]. <https://www.cdc.gov/vaccines/hcp/acip-recs/general-recs/special-situations.html#ref-11>.
  28. Government of Canada. Recommended immunization schedules: Canadian immunization guide. 2020 [accessed 2020 August 03]. <https://www.canada.ca/en/public-health/services/publications/healthy-living/canadian-immunization-guide-part-1-key-immunization-information/page-13-recommended-immunization-schedules.html#p1c12a5>.
  29. Australian Technical Advisory Group on Immunisation. Australian immunisation handbook. 2018 [accessed 2020 August 03]. <https://immunisationhandbook.health.gov.au/vaccination-for-special-risk-groups/vaccination-for-preterm-infants>.
  30. World Health Organization. BCG vaccine: WHO position paper, February 2018 - recommendations. *Vaccine.* 2018;36(24):3408–10. doi:10.1016/j.vaccine.2018.03.009.
  31. Lau Y-L, Tam AY, Ng KW, Tsoi NS, Lam B, Lam P, Yeung CY. Response of preterm infants to hepatitis B vaccine. *J Pediatr.* 1992;121(6):962–65. doi:10.1016/S0022-3476(05)80352-X.
  32. Belloni C, Chirico G, Pistorio A, Orsolini P, Tinelli C, Rondini G. Immunogenicity of hepatitis B vaccine in term and preterm infants. *Acta Paediatr.* 2007;87(3):336–38. doi:10.1111/j.1651-2227.1998.tb01448.x.
  33. Thayyil-Sudhan S, Singh M, Broor S, Xess I, Paul VK, Deorari AK. Is zero dose oral polio vaccine effective in preterm babies? *Ann Trop Paediatr.* 1998;18(4):321–24. doi:10.1080/02724936.1998.11747967.
  34. D'Angio CT, Maniscalco WM, Pichichero ME. Immunologic response of extremely premature infants to tetanus, Haemophilus influenzae, and polio immunizations. *Pediatrics.* 1995;96:18–22.
  35. Slack MH, Cade S, Schapira D, Thwaites RJ, Crowley-Luke A, Southern J, Borrow R, Miller E. DT5aP-Hib-IPV and MCC vaccines: preterm infants' response to accelerated immunisation. *Arch Dis Child.* 2005;90(4):338–41. doi:10.1136/adc.2004.052720.
  36. Klein NP, Gans HA, Sung P, Yasukawa LL, Johnson J, Sarafanov A, Chumakov K, Hansen J, Black S, Dekker C, et al. Preterm infants' T cell responses to inactivated poliovirus vaccine. *J Infect Dis.* 2010;201(2):214–22. doi:10.1086/649590.
  37. Omenaca F, Vazquez L, Garcia-Corbeira P, Mesaros N, Hanssens L, Dolhain J, Gómez IP, Liese J, Knuf M. Immunization of preterm infants with GSK's hexavalent combined diphtheria-tetanus-acellular pertussis-hepatitis B-inactivated poliovirus-Haemophilus influenzae type b conjugate vaccine: A review of safety and immunogenicity. *Vaccine.* 2018;36(7):986–96. doi:10.1016/j.vaccine.2018.01.005.
  38. Vazquez L, Garcia F, Ruttimann R, Coconier G, Jacquet J-M, Schuerman L. Immunogenicity and reactogenicity of DTPa-HBV-IPV/Hib vaccine as primary and booster vaccination in low-birth-

- weight premature infants. *Acta Paediatr.* 2008;97(9):1243–49. doi:10.1111/j.1651-2227.2008.00884.x.
39. Shinefield H, Black S, Ray P, Fireman B, Schwalbe J, Lewis E. Efficacy, immunogenicity and safety of heptavalent pneumococcal conjugate vaccine in low birth weight and preterm infants. *Pediatr Infect Dis J.* 2002;21(3):182–86. doi:10.1097/00006454-200203000-00003.
  40. Nieminen H, Rinta-Kokko H, Jokinen J, Puumalainen T, Moreira M, Borys D, Schuerman L, Palmu AA. Effectiveness of the 10-valent pneumococcal conjugate vaccine among girls, boys, preterm and low-birth-weight infants – results from a randomized, double-blind vaccine trial. *Vaccine.* 2019;37(28):3715–21. doi:10.1016/j.vaccine.2019.05.033.
  41. Martínón-Torres F, Czajka H, Center KJ, Wysocki J, Majda-Stanisławska E, Omeñaca F, Bernaola Iturbe E, Blazquez Gamero D, Concheiro-Guisan A, Gimenez-Sanchez F, et al. 13-valent pneumococcal conjugate vaccine (PCV13) in preterm versus term infants. *Pediatrics.* 2015;135(4):e876–86. doi:10.1542/peds.2014-2941.
  42. Esposito S, Pugni L, Mosca F, Principi N. Rotarix® and RotaTeq® administration to preterm infants in the neonatal intensive care unit: review of available evidence. *Vaccine.* 2018;36(36):5430–34. doi:10.1016/j.vaccine.2017.10.013.
  43. Van der Wielen M, Van Damme P. Pentavalent human-bovine (WC3) reassortant rotavirus vaccine in special populations: a review of data from the Rotavirus Efficacy and Safety Trial. *Eur J Clin Microbiol Infect Dis.* 2008;27(7):495–501. doi:10.1007/s10096-008-0479-5.
  44. Omenaca F, Sarlangue J, Szenborn L, Nogueira M, Suryakiran PV, Smolenov IV, Han HH. Safety, reactogenicity and immunogenicity of the human rotavirus vaccine in preterm European Infants: a randomized phase IIIb study. *Pediatr Infect Dis J.* 2012;31(5):487–93. doi:10.1097/INF.0b013e3182490a2c.
  45. Roue J-M, Nowak E, Le Gal G, Lemaitre T, Oger E, Poulhazan E, Giroux J-D, Garenne A, Gagneur A, et al. Impact of rotavirus vaccine on premature infants. *Clin Vaccine Immunol.* 2014;21(10):1404–09. doi:10.1128/CVI.00265-14.
  46. D’Angio CT, Heyne RJ, Duara S, Holmes LC, O’Shea TM, Wang H, Wang D, Sánchez PJ, Welliver RC, Ryan RM, et al. Immunogenicity of trivalent influenza vaccine in extremely low-birth-weight, premature versus term infants. *Pediatr Infect Dis J.* 2011;30(7):570–74. doi:10.1097/INF.0b013e31820c1fd.
  47. Batra JS, Eriksen EM, Zangwill KM, Lee M, Marcy SM, Ward JJ. Evaluation of vaccine coverage for low birth weight infants during the first year of life in a large managed care population. *Pediatrics.* 2009;123(3):951–58. doi:10.1542/peds.2008-0231.
  48. Woestenberg PJ, van Lier A, van der Maas NA, Drijfhout IH, Oomen PJ, de Melker HE. Delayed start of diphtheria, tetanus, acellular pertussis and inactivated polio vaccination in preterm and low birth weight infants in the Netherlands. *Pediatr Infect Dis J.* 2014;33(2):190–98. doi:10.1097/INF.000000000000106.
  49. Hofstetter AM, Jacobson EN, deHart MP, Englund JA. Early Childhood Vaccination Status of Preterm Infants. *Pediatrics.* 2019;144(3):e20183520. doi:10.1542/peds.2018-3520.
  50. Sisson H, Gardiner E, Watson R. Vaccination timeliness in preterm infants: an integrative review of the literature. *J Clin Nurs.* 2017;26(23–24):4094–104. doi:10.1111/jocn.13916.
  51. Sankar MJ, Neogi SB, Sharma J, Chauhan M, Srivastava R, Prabhakar PK, Khera A, Kumar R, Zodpey S, Paul VK, et al. State of newborn health in India. *J Perinatol.* 2016;36(S3):S3–8. doi:10.1038/jp.2016.183.
  52. Agrawal A, Kolhapure S, Di Pasquale A, Rai J, Mathur A. Vaccine Hesitancy as a Challenge or Vaccine Confidence as an Opportunity for Childhood Immunisation in India. *Infectious Diseases and Therapy.* 2020;9(3):421–32. doi:10.1007/s40121-020-00302-9.
  53. Sahoo T, Gulla K, Verma S. Vaccination in preterm infants: an Indian prospective. *Indian J Child Health.* 2020;1–7. doi:10.32677/IJCH.2020.v07.i01.001.
  54. Durandy A. Ontogeny of the Immune System. *Transfus Med Hemother.* 2003;30(5):222–27. doi:10.1159/000074287.
  55. Mussi-Pinhata MM, Rego MA. Immunological peculiarities of extremely preterm infants: a challenge for the prevention of nosocomial sepsis. *J Pediatr (Rio J).* 2005;81:S59–68. doi:10.1590/S0021-75572005000200008.
  56. Melville JM, Moss TJ. The immune consequences of preterm birth. *Front Neurosci.* 2013;7:79. doi:10.3389/fnins.2013.00079.
  57. Sampah MES, Hackam DJ. Dysregulated Mucosal Immunity and Associated Pathogenesis in Preterm Neonates. *Front Immunol.* 2020;11:899. doi:10.3389/fimmu.2020.00899.
  58. Carr R, Huizinga TW. Low soluble FcRIII receptor demonstrates reduced neutrophil reserves in preterm neonates. *Arch Dis Child Fetal Neonatal Ed.* 2000;83(2):F160–F. doi:10.1136/fn.83.2.F160.
  59. van den Berg JP, Westerbeek EAM, van der Klis FRM, Berbers GAM, van Elburg RM. Transplacental transport of IgG antibodies to preterm infants: a review of the literature. *Early Hum Dev.* 2011;87(2):67–72. doi:10.1016/j.earlhumdev.2010.11.003.
  60. Malek A, Sager R, Kuhn P, Nicolaidis KH, Schneider H. Evolution of maternofetal transport of immunoglobulins during human pregnancy. *Am J Reprod Immunol.* 1996;36(5):248–55. doi:10.1111/j.1600-0897.1996.tb00172.x.
  61. Heininger U, Riffelmann M, Leineweber B, Wirsing von Koenig CH. Maternally derived antibodies against Bordetella pertussis antigens pertussis toxin and filamentous hemagglutinin in preterm and full term newborns. *Pediatr Infect Dis J.* 2009;28(5):443–45. doi:10.1097/INF.0b013e318193ead7.
  62. Clarke KEN, MacNeil A, Hadler S, Scott C, Tiwari TSP, Cherian T. Global Epidemiology of Diphtheria, 2000–2017. *Emerg Infect Dis.* 2019;25(10):1834–42. doi:10.3201/eid2510.190271.
  63. Lambo JA, Anokye EA. Prognostic factors for mortality in neonatal tetanus: a systematic review and meta-analysis. *Int J Infect Dis.* 2013;17(12):e1100–10. doi:10.1016/j.ijid.2013.05.016.
  64. Riise ØR, Laake I, Vestheim D, Flem E, Moster D, Riise Bergsaker MA, Storsæter J. Risk of pertussis in relation to degree of prematurity in children less than 2 years of age. *Pediatr Infect Dis J.* 2017;36(5):e151–6. doi:10.1097/INF.0000000000001545.
  65. Marshall H, Clarke M, Rasiyah K, Richmond P, Buttery J, Reynolds G, Andrews R, Nissen M, Wood N, McIntyre P, et al. Predictors of disease severity in children hospitalized for pertussis during an epidemic. *Pediatr Infect Dis J.* 2015;34(4):339–45. doi:10.1097/INF.0000000000000577.
  66. Hviid A, Melbye M. The impact of birth weight on infectious disease hospitalization in childhood. *Am J Epidemiol.* 2007;165(7):756–61. doi:10.1093/aje/kwk064.
  67. Newman RD, Grupp-Phelan J, Shay DK, Davis RL. Perinatal risk factors for infant hospitalization with viral gastroenteritis. *Pediatrics.* 1999;103(1):E3. doi:10.1542/peds.103.1.e3.
  68. Garcia MN, Philpott DC, Murray KO, Ontiveros A, Revell PA, Chandramohan L, MUNOZ FM. Clinical predictors of disease severity during the 2009–2010 A(H1N1) influenza virus pandemic in a paediatric population. *Epidemiol Infect.* 2015;143(14):2939–49. doi:10.1017/S0950268815000114.
  69. Langkamp DL, Davis JP. Increased risk of reported pertussis and hospitalization associated with pertussis in low birth weight children. *J Pediatr.* 1996;128(5):654–59. doi:10.1016/S0022-3476(96)80131-4.
  70. Plano LRW. The changing spectrum of neonatal infectious disease. *J Perinatol.* 2010;30(S1):S16–20. doi:10.1038/jp.2010.92.
  71. Choudhary TS, Reddy NS, Apte A, Sinha B, Roy S, Nair NP, Sindhu KN, Patil R, Upadhyay RP, Chowdhury R, et al. Delayed vaccination and its predictors among children under 2 years in India: insights from the national family health survey–4. *Vaccine.* 2019;37(17):2331–39. doi:10.1016/j.vaccine.2019.03.039.
  72. Gandhi P, Dande V. A study to assess the knowledge and practice of initiation of immunisation in mothers of low birth weight Neonatal Intensive Care Unit (NICU) graduates in a tertiary care centre. *Int J Contemp Pediatr.* 2018;5(2):278. doi:10.18203/2349-3291.ijcp20175929.
  73. Upadhyay RP, Chowdhury R, Mazumder S, Taneja S, Sinha B, Martinez J, Bahl R, Bhandari N, Bhan MK. Immunization practices in low birth weight infants from rural Haryana, India: findings from secondary data analysis. *J Glob Health.* 2017;7(2):020415. doi:10.7189/jogh.07.020415.



74. Ministry of Health and Family Welfare WHOI. Immunization handbook for medical officers reprint 2017. New Delhi: World Health Organization; 2017.
75. Gurnani V, Haldar P, Aggarwal MK, Das MK, Chauhan A, Murray J, Arora NK, Jhalani M, Sudan P. Improving vaccination coverage in India: lessons from Intensified Mission Indradhanush, a cross-sectoral systems strengthening strategy. *BMJ*. 2018;363:k4782. doi:10.1136/bmj.k4782.
76. Vikram K, Vanneman R, Desai S. Linkages between maternal education and childhood immunization in India. *Soc Sci Med*. 2012;75(2):331–39. doi:10.1016/j.socscimed.2012.02.043.
77. Yaqub O, Castle-Clarke S, Sevdalis N, Chataway J. Attitudes to vaccination: A critical review. *Soc Sci Med*. 2014;112:1–11. doi:10.1016/j.socscimed.2014.04.018.
78. Vashishtha V, Bansal C, Gupta S. Pertussis vaccines: position paper of Indian Academy of Pediatrics (IAP). *Indian Pediatr*. 2013;50(11):1001–09. doi:10.1007/s13312-013-0274-y.
79. Rasmussen SA, Watson AK, Kennedy ED, Broder KR, Jamieson DJ. Vaccines and pregnancy: past, present, and future. *Semin Fetal Neonatal Med*. 2014;19(3):161–69. doi:10.1016/j.siny.2013.11.014.
80. Cousins S. India is declared free of maternal and neonatal tetanus. *BMJ: British Medical Journal*. 2015;350:h2975. doi:10.1136/bmj.h2975.
81. Singh M, Tanvir T, Nagoji D, Madan A, Gattam S, Singh H. Influenza vaccine: a viable option to protect pregnant women and infants from seasonal flu: a retrospective hospital-based study in India. *Int J Clin Pract*. 2019;73(7):e13361. doi:10.1111/ijcp.13361.
82. Wilson RJ, Paterson P, Jarrett C, Larson HJ. Understanding factors influencing vaccination acceptance during pregnancy globally: A literature review. *Vaccine*. 2015;33(47):6420–29. doi:10.1016/j.vaccine.2015.08.046.
83. Sobanjo-ter Meulen A, Duclos P, McIntyre P, Lewis KDC, Van Damme P, O'Brien KL, Klugman KP. Assessing the evidence for maternal pertussis immunization: a report from the bill & melinda gates foundation symposium on pertussis infant disease burden in low- and lower-middle-income countries. *Clin Infect Dis*. 2016;63(suppl 4):S123–33. doi:10.1093/cid/ciw530.
84. Bergin N, Murtagh J, Philip RK. Maternal vaccination as an essential component of life-course immunization and its contribution to preventive neonatology. *Int J Environ Res Public Health*. 2018;15(5):847. doi:10.3390/ijerph15050847.
85. Eberhardt CS, Blanchard-Rohner G, Lemaître B, Boukrid M, Combescure C, Othenin-Girard V, Chilin A, Petre J, de Tejada BM, Siegrist C-A, et al. Maternal immunization earlier in pregnancy maximizes antibody transfer and expected infant seropositivity against pertussis. *Clin Infect Dis*. 2016;62(7):829–36. doi:10.1093/cid/ciw027.
86. Eberhardt CS, Blanchard-Rohner G, Lemaître B, Combescure C, Othenin-Girard V, Chilin A, Petre J, Martinez de Tejada B, Siegrist C-A. Pertussis antibody transfer to preterm neonates after second- versus third-trimester maternal immunization. *Clin Infect Dis*. 2017;64(8):1129–32. doi:10.1093/cid/cix046.
87. Blanchard-Rohner G, Meier S, Bel M, Combescure C, Othenin-Girard V, Swali RA, Martinez de Tejada B, Siegrist C-A. Influenza vaccination given at least 2 weeks before delivery to pregnant women facilitates transmission of seroprotective influenza-specific antibodies to the newborn. *Pediatr Infect Dis J*. 2013;32(12):1374–80. doi:10.1097/01.inf.0000437066.40840.c4.
88. Zhong Z, Haltali M, Holder B, Rice T, Donaldson B, O'Driscoll M, Le-Doare K, Kampmann B, Tregoning JS. The impact of timing of maternal influenza immunization on infant antibody levels at birth. *Clin Exp Immunol*. 2019;195(2):139–52. doi:10.1111/cei.13234.
89. World Health Organization. Maternal and neonatal immunization field guide for Latin America and the Caribbean. Washington (D. C): PAHO; 2017 [accessed 2020 July 20]. <https://iris.paho.org/bitstream/handle/10665.2/34150/9789275119501-eng.pdf?sequence=1%26isAllowed=y>.
90. Melbourne Vaccine Education Centre. Maternal vaccination during pregnancy. 2020 [accessed 2020 July 20]. <https://mvec.mcri.edu.au/immunisation-references/maternal-vaccination-during-pregnancy/>.
91. Agrawal A, Singh S, Kolhapure S, Kandeil W, Pai R, Singhal T. Neonatal pertussis, an under-recognized health burden and rationale for maternal immunization: a systematic review of South and South-East Asian Countries. *Infectious Diseases and Therapy*. 2019;8(2):139–53. doi:10.1007/s40121-019-0245-2.
92. Libster R, Edwards KM. How can we best prevent pertussis in infants? *Clin Infect Dis*. 2012;54(1):85–87. doi:10.1093/cid/cir780.
93. Bhavé S, Bhise S, Chavan SC, Naik SS, Pusapati RV, Bavdekar A, Pandit A. Hepatitis B vaccination in premature and low birth weight (LBW) babies. *Indian Pediatr*. 2002;39:625–31.
94. Baxter D. Vaccine responsiveness in premature infants. *Hum Vaccin*. 2010;6(6):506–11. doi:10.4161/hv.6.6.12083.
95. Saari TN. Immunization of preterm and low birth weight infants. *American Academy of Pediatrics Committee on Infectious Diseases Pediatrics*. 2003;112:193–98.
96. Bonhoeffer J, Siegrist C-A, Heath PT. Immunisation of premature infants. *Arch Dis Child*. 2006;91(11):929–35. doi:10.1136/adc.2005.086306.
97. Chiappini E, Petrolini C, Caffarelli C, Calvani M, Cardinale F, Duse M, Licari A, Manti S, Martelli A, Minasi D, et al. Hexavalent vaccines in preterm infants: an update by Italian Society of Pediatric Allergy and Immunology jointly with the Italian Society of Neonatology. *Italian Journal of Pediatrics*. 2019;45(1):145. doi:10.1186/s13052-019-0742-7.
98. Omeñaca F, Garcia-Sicilia J, García-Corbeira P, Boceta R, Romero A, Lopez G, Dal-Ré R. Response of preterm newborns to immunization with a hexavalent diphtheria-tetanus-acellular pertussis-hepatitis B Virus-inactivated polio and haemophilus influenzae type B vaccine: first experiences and solutions to a serious and sensitive issue. *Pediatrics*. 2005;116(6):1292–98. doi:10.1542/peds.2004-2336.
99. Waitz M, Hopfner R, Hummler HD, Heininger U. Hepatitis B postexposure prophylaxis in preterm and low-birth-weight infants. *AJP Rep*. 2015;5(1):e67–72. doi:10.1055/s-0035-1547329.
100. Ministry of Health and Family Welfare GoI. National health policy 2017. New Delhi; 2017 [accessed 2020 May 10]. <https://main.mohfw.gov.in/sites/default/files/9147562941489753121.pdf>.
101. Ministry of Health and Family Welfare GoI. INAP: India newborn action plan. New Delhi; 2014 [accessed 2020 May 10]. [https://www.newbornwhocc.org/INAP\\_Final.pdf](https://www.newbornwhocc.org/INAP_Final.pdf).
102. Healy C. Immunization strategies to protect preterm infants. *Neoreviews*. 2010;11(8):e409–e418. doi:10.1542/neo.11-8-e409.
103. Giles ML, Krishnaswamy S, Wallace EM. Maternal immunisation: What have been the gains? Where are the gaps? What does the future hold? *F1000Research*. 2018;7:1733. doi:10.12688/f1000research.15475.1.