



# The Effect of (1S,2S,3E,7E,11E)-3,7,11,15-Cembratetraen-17,2-Olide (LS-1) from *Lobophyllum sp.* on the Apoptosis Induction of SNU-C5 Human Colorectal Cancer Cells

Eun-Ji Kim<sup>1</sup>, Jung Il Kang<sup>1</sup>, Nguyen-Huu Tung<sup>2</sup>, Young-Ho Kim<sup>2</sup>, Jin Won Hyun<sup>1</sup>, Young Sang Koh<sup>1</sup>, Weon-Young Chang<sup>1</sup>, Eun Sook Yoo<sup>1</sup> and Hee-Kyoung Kang<sup>1,\*</sup>

<sup>1</sup>School of Medicine, Jeju National University, Jeju 63243,

<sup>2</sup>College of Pharmacy, Chungnam National University, Daejeon 34134, Republic of Korea

## Abstract

(1S,2S,3E,7E,11E)-3,7,11,15-cembratetraen-17,2-olide (LS-1), a marine cembrenolide diterpene, has anticancer activity against colon cancer cells such as HT-29, SNU-C5/5-FU (fluorouracil-resistant SNU-C5) and SNU-C5. However, the action mechanism of LS-1 on SNU-C5 human colon cancer cells has not been fully elucidated. In this study, we investigated whether the anticancer effect of LS-1 could result from apoptosis via the modulation of Wnt/ $\beta$ -catenin and the TGF- $\beta$  pathways. When treated with the LS-1, we could observe the apoptotic characteristics such as apoptotic bodies and the increase of sub-G1 hypodiploid cell population, increase of Bax level, decrease of Bcl-2 expression, cleavage of procaspase-3 and cleavage of poly (ADP-ribose) polymerase in SNU-C5 cells. Furthermore, the apoptosis induction of SNU-C5 cells upon LS-1 treatment was also accompanied by the down-regulation of Wnt/ $\beta$ -catenin signaling pathway via the decrease of GSK-3 $\beta$  phosphorylation followed by the decrease of  $\beta$ -catenin level. In addition, the LS-1 induced the activation of TGF- $\beta$  signaling pathway with the decrease of carcinoembryonic antigen which leads to decrease of c-Myc, an oncoprotein. These data suggest that the LS-1 could induce the apoptosis via the down-regulation of Wnt/ $\beta$ -catenin pathway and the activation of TGF- $\beta$  pathway in SNU-C5 human colon cancer cells. The results support that the LS-1 might have potential for the treatment of human colon cancer.

**Key Words:** LS-1, SNU-C5, Apoptosis, Wnt/ $\beta$ -catenin pathway, TGF- $\beta$  pathway

## INTRODUCTION

Colon cancer is one of the leading causes of cancer death globally. The worldwide incidence rates of colon cancer have been increasing, which is followed by the increase of need to study on the progression and development of colon cancer (Jemal *et al.*, 2008). There is also an urgent need for novel chemopreventive and/or chemotherapeutic agents with minimal or no side effects and toxicities. In recent years, bioactive compounds derived from natural sources have thus become the focus of a substantial amount of attention from researchers seeking to develop chemopreventive and/or chemotherapeutic agents.

More than 80% of colon cancer cases harbor aberrant Wnt/ $\beta$ -catenin signaling that regulate colon cancer progression through intracellular mechanism or interaction with tumor mi-

croenvironment and cancer stem cells (Song *et al.*, 2015). In colon cancer, Wnt/ $\beta$ -catenin signaling is activated via genetic or epigenetic changes of its components. In the absence of the Wnt ligand, glycogen synthase kinase-3 $\beta$  (GSK-3 $\beta$ ) constitutively phosphorylates  $\beta$ -catenin which leads to ubiquitination and degradation of  $\beta$ -catenin. In the presence of Wnt ligand, the  $\beta$ -catenin is accumulated in cytoplasm and translocates into the nucleus and acts as a trans-factor on cell survival. The impairment of the regulation of the Wnt/ $\beta$ -catenin pathway (particularly, mutation in *APC*) plays an important role in the initiation of colorectal cancer (Akiyama, 2000).

TGF- $\beta$  signaling pathway is involved in various cellular processes such as apoptosis, cell migration and cell differentiation (Nicklas and Saiz, 2013). TGF- $\beta$  receptors consist of TGF- $\beta$  receptor I (TGF $\beta$ RI) and TGF- $\beta$  receptor II (TGF $\beta$ RII). Binding of TGF- $\beta$  to the TGF $\beta$ RII allows phosphorylation of

**Open Access** <https://doi.org/10.4062/biomolther.2016.023>

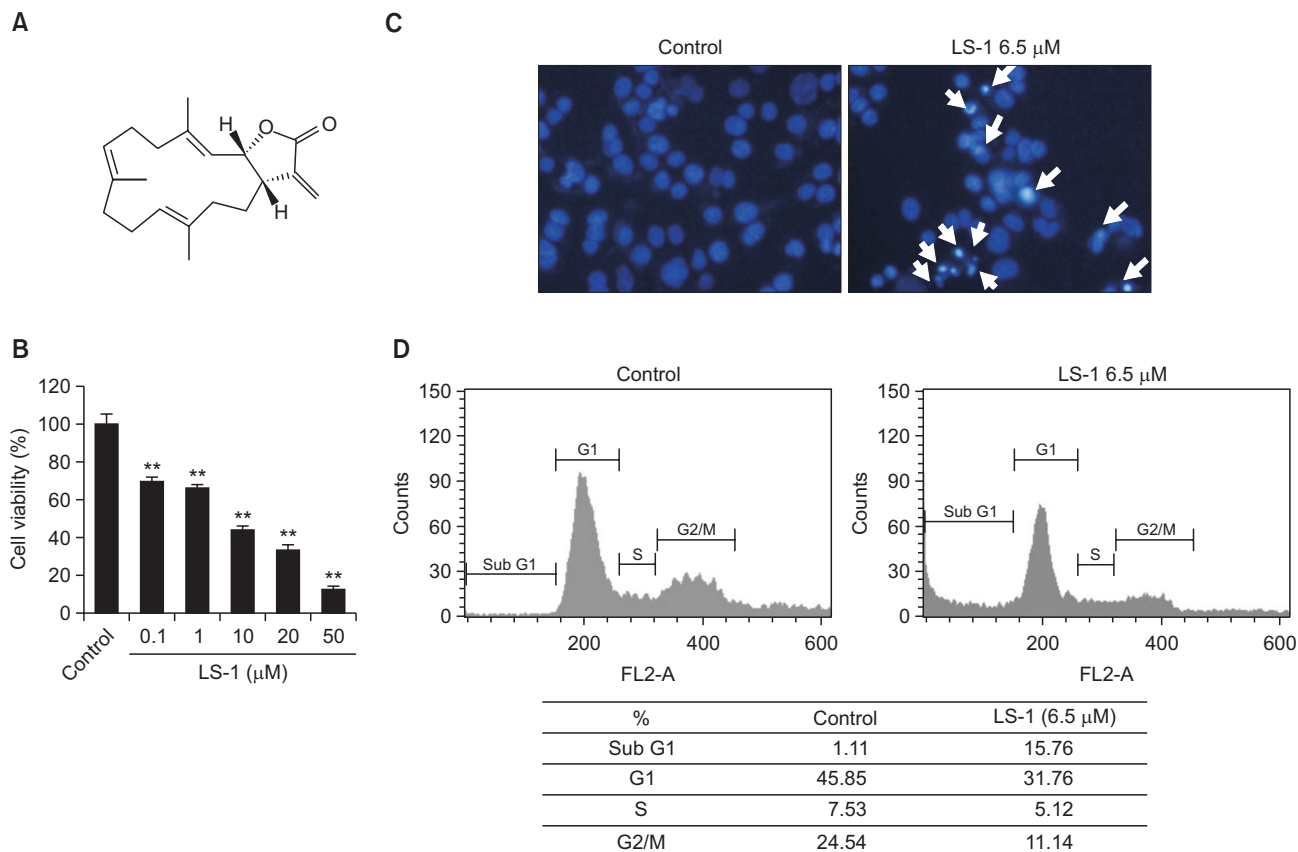
This is an Open Access article distributed under the terms of the Creative Commons Attribution Non-Commercial License (<http://creativecommons.org/licenses/by-nc/4.0/>) which permits unrestricted non-commercial use, distribution, and reproduction in any medium, provided the original work is properly cited.

Received Feb 1, 2016 Revised May 4, 2016 Accepted May 12, 2016  
Published Online Nov 1, 2016

**\*Corresponding Author**

E-mail: pharmkhk@jejunu.ac.kr

Tel: +82-64-754-3846, Fax: +82-64-702-2687



**Fig. 1.** Effect of LS-1 on the induction of apoptosis in SNU-C5. (A) Chemical structure of cembrenolide **LS-1**. (B) The cytotoxicity of LS-1 on SNU-C5 was measured using the MTT assay. The data are presented as the mean value  $\pm$  SD from three independent trials.  $**p < 0.01$  compared with the control. (C) The SNU-C5 cells were treated with LS-1 for 24 h and stained with Hoechst 33342 (10  $\mu\text{g}/\text{mL}$  medium at final). Apoptotic bodies were observed in an inverted fluorescent microscope equipped with an IX-71 Olympus camera (magnification:  $\times 20$ ). (D) The SNU-C5 cells were treated with LS-1 for 24 h. The cell cycle analysis was performed by flow cytometry.

the TGF $\beta$ RI. The TGF $\beta$ RI then phosphorylates Smad-2/3 (R-Smad). Phosphorylated R-Smad then typically bind to the Smad-4 (co-Smad). These complexes translocate into the nucleus, where they interact with various transcription factors to induce expression of target genes (Nicklas and Saiz, 2013). The TGF- $\beta$  signaling pathway has dual roles, including being a promoter of tumor metastasis and suppressor of tumor in many human cancers (Sheen *et al.*, 2013). The tumor metastasis includes the epithelial-mesenchymal transition (EMT), which is improved by overexpressed TGF- $\beta$  at the invasion of cancer cells (Portella *et al.*, 1998; Thuault *et al.*, 2006). Paradoxically, the activation of TGF- $\beta$  signaling pathway has been known to induce cancer suppression (Sun *et al.*, 1994). However, many colorectal cancers escape the tumor-suppressor effects of TGF- $\beta$  and become resistant to TGF $\beta$ -induced growth inhibition (Hoosein *et al.*, 1989).

Carcinoembryonic antigen (CEA) is glycosylphosphatidylinositol (GPI)-anchored glycoprotein. Typically, CEA is found in colon and gastrointestinal tissues of a developing fetus, whereas the synthesis of CEA remarkably decreases before birth. A low level of CEA is thus maintained in the blood of healthy adult. If the CEA is elevated in the blood of adult, this means that the possibility of cancer increases and in cancer patients, poor prognosis and metastasis are shown (Camacho-Leal and Stanners, 2008). In particular, overexpressed

CEA has been reported to inhibit induction of apoptosis by TGF- $\beta$  signaling pathway via CEA directly binding to TGF- $\beta$ RI (Li *et al.*, 2010).

(1S,2S,3E,7E,11E)-3,7,11,15-Cembratetraen-17,2-olide (LS-1), a marine cembrenolide diterpene, from *Lobophyllum sp.* (Fig. 1A) has been reported to have anticancer effects via reactive oxygen species (ROS) generation in HT-29 human colorectal cancer cells (Nguyen *et al.*, 2010; Hong *et al.*, 2012). In addition, LS-1 also showed anticancer effect against SNU-C5/5-FU, fluorouracil-resistant human colon cancer cells, via the apoptosis-induction resulting from the activation of TGF- $\beta$  pathway with the down-regulation of CEA (Kim *et al.*, 2015). On the other hand, although SNU-C5/5-FU features the high-expression of CEA with low activation of TGF- $\beta$  signaling compared with SNU-C5, LS-1 showed similar cytotoxicity against both of SNU-C5/5-FU and SNU-C5. In the study, we thus examined the action mechanism of LS-1 on the modulation of the TGF- $\beta$  and Wnt/ $\beta$ -catenin pathways in the SNU-C5 cells.

## MATERIALS AND METHODS

### Reagents

Hoechst 33342, RNase A, 3-[4,5-dimethylthiazol-2-yl]-2,5-diphenyltetrazolium bromide (MTT) and propidium iodide (PI)

were purchased from Sigma Chemical Co (St. Louis, MO, USA). Mouse monoclonal anti-c-Myc, rabbit polyclonal anti-Bax and anti- $\beta$ -catenin and goat polyclonal anti-Smad-2/3 antibodies were purchased from Santa Cruz Biotechnology (Santa Cruz, CA, USA). Rabbit monoclonal anti-Bcl-2, anti-p-Smad-3 and anti-cleaved caspase-3, rabbit polyclonal anti-poly(ADP-ribose)polymerase (PARP), anti-GSK-3 $\beta$ , rabbit polyclonal anti-p-GSK-3 $\beta$  and mouse monoclonal anti-CEA antibodies were purchased from Cell Signaling Technology (Beverly, MA, USA). Mouse monoclonal  $\beta$ -actin was purchased from Sigma. Aprotinin and leupeptin were obtained from Roche Applied Science (Indianapolis, IN, USA). Secondary HRP conjugated anti-mouse and anti-rabbit antibodies were purchased from Santa Cruz Biotechnology (Santa Cruz). Western blotting reagent, West-zol enhanced chemilumin, was obtained from iNtRon Biotechnology (Gyeonggi, Republic of Korea). VECTASHIELD Antifade Mounting Medium with DAPI was purchased from Vector Laboratories (Burlingame, CA, USA).

### Cell culture

SNU-C5, human colon cancer cell line, was obtained from the Korean Cell Line Bank (KCLB). SNU-C5 cells were cultured in RPMI 1640 (Hyclone, UT, USA) medium supplemented with 10% heat inactivated fetal bovine serum (Hyclone, UT, USA), 100 U/mL penicillin and 100 mg/mL streptomycin (GIBCO, NY, USA) at 37°C in a humidified atmosphere with 5% CO<sub>2</sub>.

### Cell viability assay

The effect of LS-1 on the growth of SNU-C5 cells were evaluated using the MTT assay (Scudiero *et al.*, 1988). The cells (2 $\times$ 10<sup>5</sup> cells/mL) were seeded on 96-well microplates for 24 h. The cells were treated with LS-1 (0.1, 1, 10, 20 and 50  $\mu$ M) for 72 h. After incubation, the cells were treated with 50  $\mu$ L (5 mg/mL) MTT dye and incubated at 37°C for 4 h. The medium was aspirated, and 150  $\mu$ L/well of dimethyl sulfoxide were added to dissolve the formazan precipitate. Cell viabilities were determined by measuring the absorbance at 540 nm using a microplate enzyme-linked immunosorbent assay (ELISA) reader (BioTek Instruments Inc., Winooski, VT, USA). Each experiment was repeated at least three times. Concentration (X-axis)-response (% control optical density; Y-axis) curves were obtained. We determined the IC<sub>50</sub> value (compound concentration resulting in 50% inhibition of growth).

### Morphological analysis of apoptosis by hoechst 33342 staining

SNU-C5 cells were seeded at 2 $\times$ 10<sup>5</sup> cells/mL on 24-well microplates. After 24 h of incubation, the cells were treated with LS-1 (6.5  $\mu$ M of IC<sub>50</sub>) for 24 h. The cells were incubated in a Hoechst 33342, which is a DNA-specific fluorescent (10  $\mu$ g/mL medium at final) at 37°C for 30 min. The SNU-C5 cells were observed with an inverted fluorescent microscope equipped with an IX-71 Olympus camera (Olympus, Tokyo, Japan) and photographed (magnification  $\times$ 20).

### Flow cytometric analysis of apoptosis

The effect of LS-1 on cell cycle distribution was analyzed by flow cytometry after staining the cells with PI (Fried *et al.*, 1976). SNU-C5 cells (2 $\times$ 10<sup>5</sup> cells/mL) were treated with 6.5  $\mu$ M of LS-1 for 24 h. The treated cells were detached with trypsin, washed twice with phosphate-buffered saline (PBS)

and fixed with 70% ethanol for 30 min at -20°C. The fixed cells were washed twice with cold PBS, incubated with 50  $\mu$ g/mL RNase A at 37°C for 30 min, and stained with 50  $\mu$ g/mL PI at 37°C for 30 min in the dark. The stained cells were analyzed using fluorescence activated cell sorter (FACS) caliber flow cytometry (Becton Dickinson, San Jose, CA, USA). Histograms were analyzed with Cell Quest software (Becton Dickinson). The proportion of cells in G<sub>0</sub>/G<sub>1</sub>, S and G<sub>2</sub>/M phases was represented as DNA histograms. Apoptotic cells with hypodiploid DNA were measured by quantifying the sub-G<sub>1</sub> peak in the cell cycle pattern.

### Western blot analysis

To examine the effect of LS-1 in the SNU-C5 cells, the cells were seeded 2 $\times$ 10<sup>5</sup> cells/mL for 24 h and treated with LS-1 6.5  $\mu$ M for 12, 24 and 48 h. After treatment, SNU-C5 cells were lysed with lysis buffer for 30 min at 4°C. The lysates were centrifuged at 15,000 rpm, 4°C for 15 min. Protein content was determined according to the method of Bradford assay (Bradford, 1976). The cell lysates were separated by 8-15% SDS-PAGE gels and then transferred to polyvinylidene fluoride membrane (Bio-Rad, Hercules, CA, USA) by glycine transfer buffer (192 mM glycine, 25 mM Tris-HCl [pH 8.8], and 20% MeOH [v/v]) at 200 mA for 2 h. After blocking with 5% skim milk solution, the membrane was incubated with primary antibody against PARP (1:2000), cleaved caspase-3 (1:1000), Bcl-2 (1:1000), Bax (1:1000), p-GSK-3 $\beta$  (1:1000), GSK-3 $\beta$  (1:1000),  $\beta$ -catenin (1:2000), CEA (1:1000), Smad-2/3 (1:1000), p-Smad-3 (1:1000), c-Myc (1:1000) and  $\beta$ -actin (1:5000) antibodies at 4°C overnight and incubated with a secondary HRP antibody (1:5000) at room temperature (RT) for 1 h. Protein bands were detected using a WEST-ZOL<sup>®</sup> plus Western Blot Detection System (iNtRON) with subsequent exposure to X-ray films (AGFA, Mortsel, Belgium).

### Confocal microscopy

SNU-C5 cells were seeded on coverslips in 24-well plate and incubated with LS-1 6.5  $\mu$ M for 24 h. The cells were washed with PBS and fixed 3.5% paraformaldehyde for 30 min at RT. And the cells were permeabilized with 0.1% Triton X-100 for 10 min and blocked in 3% bovine serum albumin for 1 h at RT. The cells were treated with primary rabbit monoclonal anti-p-Smad-3 antibody (1:100) overnight at 4°C and stained with Alexa Fluor 488 goat anti-rabbit IgG secondary antibody (BioLegend, Sandiego, CA, USA). The results were visualized using an FV500 confocal microscope (Olympus).

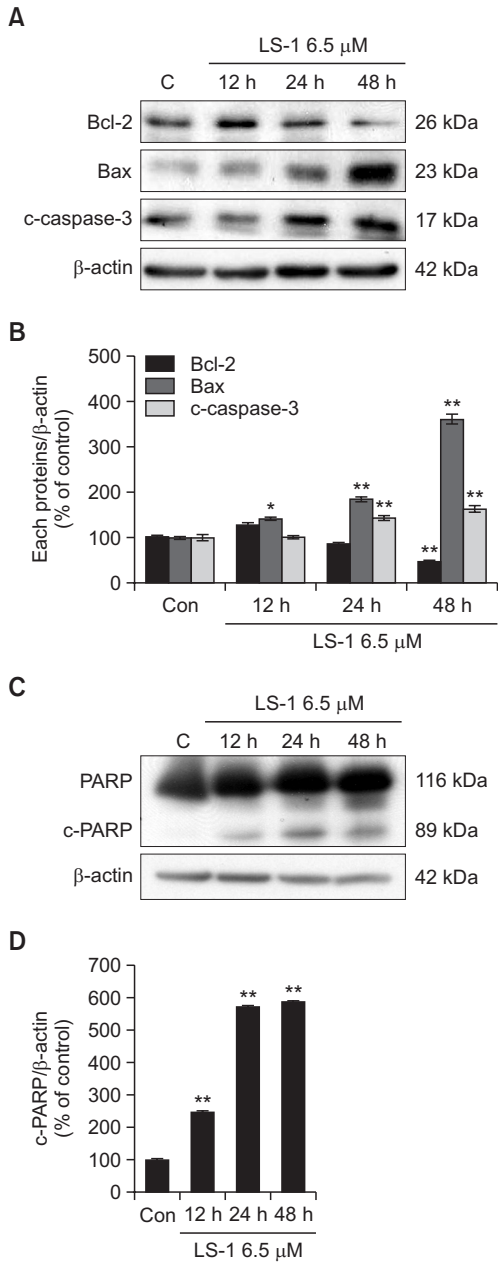
### Statistical analysis

Results are shown as mean  $\pm$  standard deviation (SD) from three independent experiments. Student's *t*-test was used to determine the data with the following significance levels: \**p*<0.05; \*\**p*<0.01. All assays were performed with at least three independent experiments.

## RESULTS

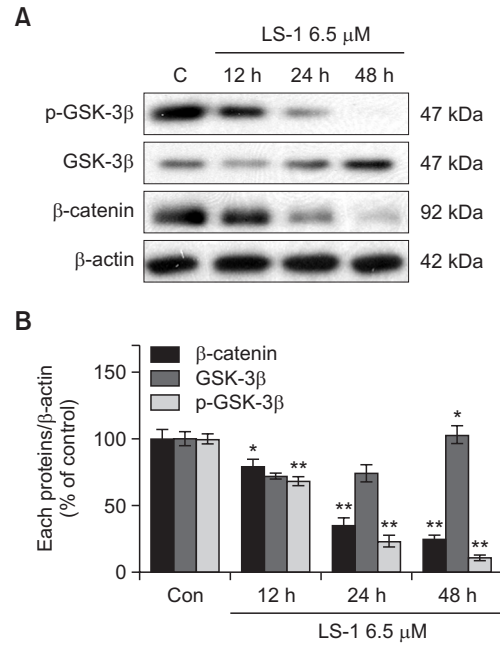
### Effect of LS-1 on the apoptosis induction of SNU-C5 cells

In a previous report, we showed that LS-1 treatment could induce the cell death of SNU-C5 cells (Kim *et al.*, 2015). In the study, we also confirmed that IC<sub>50</sub> value of LS-1 was 6.5  $\mu$ M in SNU-C5 cells (Fig. 1B). We examined whether SNU-C5



**Fig. 2.** Effect of LS-1 on the regulation of apoptosis-related proteins. (A) The SNU-C5 was treated with LS-1 for 12, 24 and 48 h. The levels of Bcl-2, Bax and c-caspase-3 were analyzed by western blotting using specific antibodies. (B) Data represent the percentage of Bcl-2, Bax and c-caspase-3 expression in SNU-C5. (C) The SNU-C5 was treated with LS-1 for 12, 24 and 48 h. The levels of PARP and c-PARP were analyzed by western blotting using polyclonal PARP antibody. (D) Data represent the percentage of c-PARP expression in SNU-C5. The data are presented as the mean value  $\pm$  SD from three independent trials. \* $p < 0.05$  and \*\* $p < 0.01$  compared with the controls.

cell death by LS-1 could result from induction of apoptosis. The cell death by apoptosis has typical characteristics including increase of sub-G<sub>1</sub> hypodiploid cells and apoptotic bodies. When SNU-C5 cells were treated with LS-1 of 6.5  $\mu$ M for 24 h, we could observe apoptotic bodies (Fig. 1C). Also, the



**Fig. 3.** Effect of LS-1 on the regulation of Wnt/ $\beta$ -catenin signaling pathway. (A) The SNU-C5 was treated with LS-1 for 12, 24 and 48 h. The levels of p-GSK-3 $\beta$ , GSK-3 $\beta$  and  $\beta$ -catenin were analyzed by western blotting using specific antibodies. (B) Data represent the percentage of p-GSK-3 $\beta$ , GSK-3 $\beta$  and  $\beta$ -catenin expression in SNU-C5. The data are presented as the mean value  $\pm$  SD from three independent trials. \* $p < 0.05$  and \*\* $p < 0.01$  compared with the control.

sub-G<sub>1</sub> phase population significantly increased from 1.11% to 15.76% after 24 h treatment (Fig. 1D).

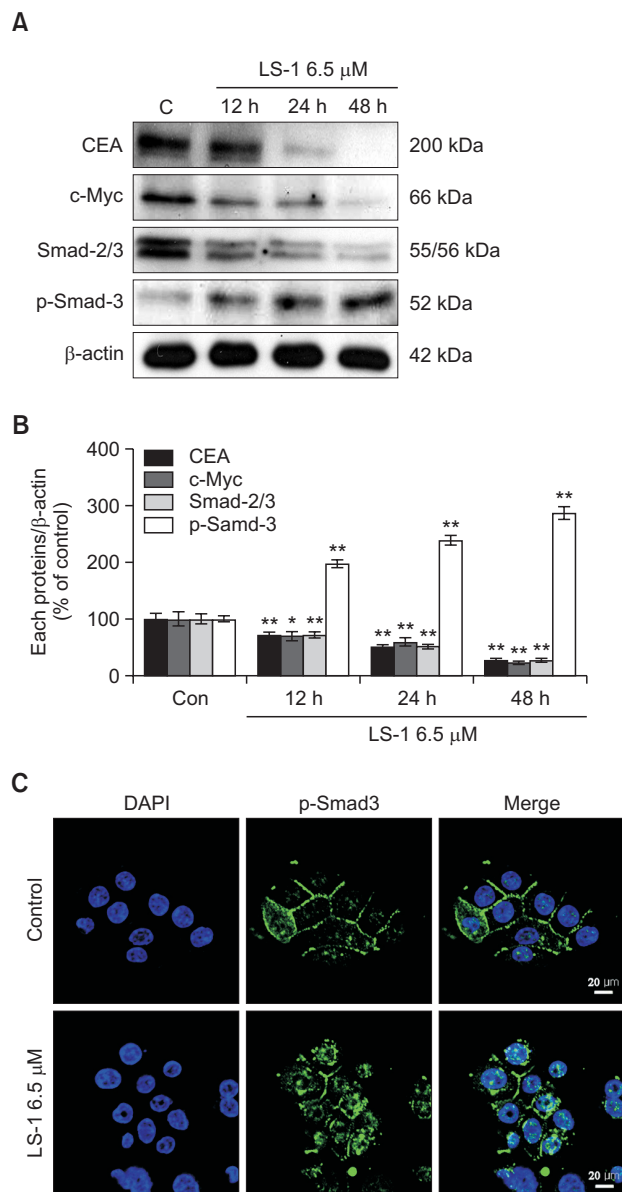
**Effect of LS-1 on the expressions of apoptosis-related proteins in SNU-C5 cells**

When treated with LS-1, we then examined the expressions of the apoptosis-related proteins. As a result, LS-1 treatment increased the level of Bax, a pro-apoptotic protein, while LS-1 decreased the level of Bcl-2, an anti-apoptotic protein, in a time dependent manner (Fig. 2A, 2B). In addition, treatment of LS-1 induced the cleavage of caspase-3, an executioner caspase (Fig. 2A, 2B) and cleavage of PARP in time dependent manners (Fig. 2C, 2D). These results indicate that LS-1 could inhibit the proliferation of SNU-C5 by the induction of apoptosis.

**Effect of LS-1 on the Wnt/ $\beta$ -catenin signaling pathway in SNU-C5 cells**

By what mechanism LS-1 might induce the apoptosis of SNU-C5 cells? We thus examined the effect of LS-1 on the apoptosis related pathways. Up-regulated Wnt/ $\beta$ -catenin signaling pathway contributes the progression and development of cancer (Akiyama, 2000). We investigated the action of LS-1 on expressions of Wnt/ $\beta$ -catenin signaling-related proteins including GSK-3 $\beta$  and  $\beta$ -catenin. As a result, LS-1 treatment decreased levels of phospho-GSK-3 $\beta$ , the inactivated form of GSK-3 $\beta$ , and  $\beta$ -catenin (Fig. 3). These data suggest that LS-1 might decrease  $\beta$ -catenin level through GSK-3 $\beta$  activation, and that the LS-1 effect on the apoptosis induction could be associated with the down-regulation of the Wnt/ $\beta$ -catenin





**Fig. 4.** Effect of LS-1 on the regulation of TGF- $\beta$  signaling pathway. (A) The SNU-C5 was treated with LS-1 for 12, 24 and 48 h. The levels of CEA, c-Myc, Smad-2/3 and p-Smad-3 were analyzed by western blotting using specific antibodies. (B) Data represent the percentage of CEA, c-Myc, Smad-2/3 and p-Smad-3 expression in SNU-C5. (C) Modulation of the p-Smad-3 expression by LS-1 was examined by immunofluorescent stain of p-Smad-3. The data are presented as the mean value  $\pm$  SD from three independent trials. \* $p$ <0.05 and \*\* $p$ <0.01 compared with the control.

signaling pathway.

#### Effect of LS-1 on the TGF- $\beta$ signaling in SNU-C5 cells

We examined expression of CEA, whose down-regulation is associated with induction of apoptosis (Kim et al., 2015). Treatment of LS-1 decreased the CEA level in a time dependent manner in SNU-C5 cells (Fig. 4A, 4B). Recent studies reported that CEA could interact directly with TGF- $\beta$  receptor I, which leads inhibition of TGF- $\beta$  signaling (Li et al., 2010).

We thus examined whether LS-1 could also induce the activation of TGF- $\beta$  signaling. During activation of TGF- $\beta$  signaling, activated TGF- $\beta$  receptors induce the phosphorylation of Smad-2 or Smad-3. Interestingly, treatment LS-1 increased the phospho-Smad-3 level, whereas the expression of c-Myc, the target protein of TGF- $\beta$  signaling, decreased in a time dependent manner (Fig. 4A, 4B). The phosphorylated-Smad-3 combines the Smad-4 and the complex is transferred into the nucleus (Nicklas and Saiz, 2013). The LS-1 increased the level of phospho-Smad-3 in the nucleus (Fig. 4C). These results indicated that LS-1 could activate TGF- $\beta$  signaling with decrease of CEA, which is followed by the decrease of c-Myc in SNU-C5 cells.

## DISCUSSION

In this study, we investigated whether the anticancer effect of LS-1 could result from apoptosis via the modulation of Wnt/ $\beta$ -catenin and the TGF- $\beta$  pathways. LS-1, a marine cembre nolide diterpene, from *Lobophytum sp.* is reported to have an anticancer effect against colon cancer cells such as HT-29, SNU-C5/5-FU and SNU-C5 (Hong et al., 2012; Kim et al., 2015). However, the action mechanism of LS-1 on SNU-C5 human colon cancer cells has not been fully elucidated. To the best of our knowledge, this study is the first to demonstrate that LS-1 could induce the apoptosis via not only activation of TGF- $\beta$  signaling with down-regulation of CEA but also down-regulation of Wnt/ $\beta$ -catenin signaling pathway.

The components of *Lobophytum sp.* include lobophytene, lobohedleolide, lobocrassolide and pakisterol A besides LS-1. LS-1 and lobophytene showed cytotoxic effect against A549 lung cancer cells and HT-29 colon cancer cells, while there have been no reports of the biological effects of the other components (Nguyen et al., 2010). We also reported that LS-1 treatment induced the cell death in SNU-C5 cells with the IC<sub>50</sub> value of 5.65  $\mu$ M (Kim et al., 2015). Moreover, LS-1 barely inhibited the proliferation of HEL-299, which is a normal cell line, with an IC<sub>50</sub> value of 43.07  $\mu$ M (Kim et al., 2015). In this study, we found that the treatment of LS-1 showed typical characteristics of apoptosis such as increase of sub-G<sub>1</sub> hypodiploid cells and apoptotic bodies in SNU-C5 cells (Fig. 1). Generally, apoptosis is mediated by apoptosis-related proteins, such as pro- and anti-apoptotic molecules. During apoptosis, pro-apoptotic molecules including Bax and Bak are up-regulated and anti-apoptotic molecules such as Bcl-2 and Bcl-X<sub>L</sub> are down-regulated. Here, we showed that LS-1 induced the increase of Bax, while LS-1 decreased the Bcl-2 level (Fig. 2A, 2B). Up-regulated Bax, a pro-apoptotic molecule, induces release of the cytochrome c from mitochondria, which leads to cleavage of caspase-9. The cleaved-caspase-9 initiates a protease cascade leading to the cleavage of caspase-3, which lead to cleavage of PARP, a nuclear enzyme that is involved in DNA repair in response to various stresses. In response to LS-1 treatment in SNU-C5 cells, caspase-3 was activated (Fig. 2A, 2B), leading to the cleavage of PARP (Fig. 2C, 2D).

Wnt/ $\beta$ -catenin signaling pathway plays a pivotal role in the progression and development of cancer (Akiyama, 2000). Moreover, previous study indicated that activation of the Wnt signaling pathway is a critical event in the development of colon cancer (Schneikert and Behrens, 2007). The activated GSK-3 $\beta$  leads to degradation of the  $\beta$ -catenin. Thus, be-

cause of inactivated-GSK-3 $\beta$  did not degrade the  $\beta$ -catenin, the  $\beta$ -catenin acts as a transcription factor in nucleus (Akiyama, 2000). Interestingly, we confirmed that the LS-1 induced the activation of GSK-3 $\beta$  and down-regulation of  $\beta$ -catenin in SNU-C5 cells (Fig. 3). Recently, flavonoids, a class of natural compounds, act as anticancer drugs through inhibition of Wnt/ $\beta$ -catenin signaling pathway in colon cancer cells (Amado *et al.*, 2014). The vitamin D could also induce apoptosis of colon cancer cells via inhibition of the Wnt/ $\beta$ -catenin signaling pathway (Pendas-Franco *et al.*, 2008).

TGF- $\beta$  signaling has important roles in many processes including cell cycle regulation, cell migration and apoptosis (Nicklas and Saiz, 2013). During activation of TGF- $\beta$  signaling, TGF- $\beta$  receptor II (TGF- $\beta$ RII) induces the phosphorylation of TGF- $\beta$  receptor I (TGF- $\beta$ RI). The Phospho-TGF- $\beta$ RI leads to phosphorylation the receptor-regulated Smad (R-Smad), which be composed of Smad-2 and Smad-3. Phosphorylated R-Smad could bind with common mediated Smad (Co-Smad), such as Smad-4. These complexes migrate towards the nucleus, bind transcription promoters and cause the transcription of target gene (Nicklas and Saiz, 2013; Han *et al.*, 2008). Some of the target of the TGF- $\beta$  signaling is cell cycle check point genes including p21 and p27 (Xu and Pasche, 2007). Thus, these target genes evokes G<sub>1</sub> arrest in the cell cycle (Chiarugi *et al.*, 1994; Xu and Pasche, 2007). Many colon cancers escape the tumor-suppressor effects of TGF- $\beta$  signaling and resistant to TGF- $\beta$  induced growth inhibition (Xu and Pasche, 2007).  $\alpha$ -Tocopheryl succinate has been shown to upregulate cell surface expression of TGF- $\beta$ RII leading to increased cellular responsiveness to TGF- $\beta$ -induced apoptosis in human breast cancer cells (Constantinou *et al.*, 2008). FK506, the canonical ligand of FKBP, could also lead to apoptosis through activation of the TGF- $\beta$  signaling in chronic lymphocytic leukemia B cells (Romano *et al.*, 2008). On the other hand, CEA, a tumor marker on colon cancers, also relates with cell survival against chemotherapy agent (Camacho-Leal and Stanners, 2008). Abnormal CEA expression and alteration of TGF- $\beta$  signaling are common features of colon cancers (Samarra *et al.*, 2007; Han *et al.*, 2008). A recent study reported that CEA contributes the inhibition of apoptosis via inactivation of TGF- $\beta$  signaling through direct interaction with TGF- $\beta$ RI (Li *et al.*, 2010). In previous report, when examined the characteristics of several colon cancer cells such as SNU-C5/5-FU, HT-29, LOVO, HCT-116 and SNU-C5 on the activation of TGF- $\beta$  signaling and the CEA expression, SNU-C5/5-FU showed the high-expression of CEA with low activation of TGF- $\beta$  signaling compared with SNU-C5. Nevertheless, LS-1 showed similar cytotoxicity against both of SNU-C5/5-FU and SNU-C5 and induced activation of TGF- $\beta$  signaling with the decrease CEA level in SNU-C5/5-FU (Kim *et al.*, 2015). In the study, we thus examined the action mechanism of LS-1 on the modulation of the TGF- $\beta$  pathway in the SNU-C5 cells. LS-1 reduced the CEA expression and increased the phosphorylation of Smad-3 in SNU-C5 cells (Fig. 4). These results indicated that LS-1 could induce activation of TGF- $\beta$  signaling with the decrease of CEA in SNU-C5 cells besides SNU-C5/5-FU. We need to examine LS-1 effect on the activation of TGF- $\beta$  signaling in HT-29 colon cancer cells which relatively shows high-activation of TGF- $\beta$  signaling with low or none CEA expression in further study.

Taken together, the induction of apoptosis by LS-1 was also accompanied by the decrease of  $\beta$ -catenin through activation

of GSK-3 $\beta$ , and activation of TGF- $\beta$  signaling with down-regulation of CEA. The results suggest that LS-1 could induce the apoptosis via modulation of Wnt/ $\beta$ -catenin signaling and TGF- $\beta$  signaling pathways in SNU-C5 cells, which means that LS-1 might have a potential in colon cancer treatment.

## CONFLICT OF INTEREST

No competing financial interests exist for any of the authors of this study.

## ACKNOWLEDGMENTS

This study was supported by a grant from the National R&D Program for Cancer Control, Ministry for Health and Welfare, Republic of Korea (1120340).

## REFERENCES

- Akiyama, T. (2000) Wnt/ $\beta$ -catenin signaling. *Cytokine Growth Factor Rev.* **11**, 273-282.
- Amado, N. G., Predes, D., Moreno, M. M., Carvalho, I. O., Mendes, F. A. and Abreu, J. G. (2014) Flavonoids and Wnt/ $\beta$ -catenin signaling: potential role in colorectal cancer therapies. *Int. J. Mol. Sci.* **15**, 12094-12106.
- Bradford, M. M. (1976) A rapid and sensitive method for the quantitation of microgram quantities of protein utilizing the principle of protein-dye binding. *Anal. Biochem.* **72**, 248-254.
- Camacho-Leal, P. and Stanners, C. P. (2008) The human carcinoembryonic antigen (CEA) GPI anchor mediates anoikis inhibition by inactivation of the intrinsic death pathway. *Oncogene* **27**, 1545-1553.
- Chiarugi, V., Magnelli, L., Cinelli, M. and Basi, G. (1994) Apoptosis and the cell cycle. *Cell. Mol. Biol. Res.* **40**, 603-612.
- Constantinou, C., Papas, A. and Constantinou, A. I. (2008) Vitamin E and cancer: An insight into the anticancer activities of vitamin E isomers and analogs. *Int. J. Cancer* **123**, 739-752.
- Fried, J., Perez, A. G. and Clarkson, B. D. (1976) Flow cytofluorometric analysis of cell cycle distributions using propidium iodide. Properties of the method and mathematical analysis of the data. *J. Cell Biol.* **71**, 172-181.
- Han, S. U., Kwak, T. H., Her, K. H., Cho, Y. H., Choi, C., Lee, H. J., Hong, S., Park, Y. S., Kim, Y. S., Kim, T. A. and Kim, S. J. (2008) CEACAM5 and CEACAM6 are major target genes for Smad3-mediated TGF-beta signaling. *Oncogene* **27**, 675-683.
- Hong, J. Y., Boo, H. J., Kang, J. I., Kim, M. K., Yoo, E. S., Hyun, J. W., Koh, Y. S., Kim, G. Y., Maeng, Y. H., Hyun, C. L., Chang, W. Y., Kim, Y. H., Kim, Y. R. and Kang, H. K. (2012) (1S,2S,3E,7E,11E)-3,7,11,15-Cembratetraen-17,2-olide, a cembrenolide diterpene from soft coral *Lobophytum* sp., inhibits growth and induces apoptosis in human colon cancer cells through reactive oxygen species generation. *Biol. Pharm. Bull.* **35**, 1054-1063.
- Hoosain, N. M., McKnight, M. K., Levine, A. E., Mulder, K. M., Childress, K. E., Brattain, D. E. and Brattain, M. G. (1989) Differential sensitivity of subclasses of human colon carcinoma cell lines to the growth inhibitory effects of transforming growth factor-beta 1. *Exp. Cell Res.* **181**, 442-453.
- Jemal, A., Siegel, R., Ward, E., Hao, Y., Xu, J., Murray, T. and Thun, M. J. (2008) Cancer statistics, 2008. *CA Cancer J. Clin.* **58**, 71-96.
- Kim, E. J., Kang, J. I., Kwak, J. W., Jeon, C. H., Tung, N. H., Kim, Y. H., Choi, C. H., Hyun, J. W., Koh, Y. S., Yoo, E. S. and Kang, H. K. (2015) The anticancer effect of (1S,2S,3E,7E,11E)-3,7,11,15-cembratetraen-17,2-olide (LS-1) through the activation of TGF- $\beta$  signaling in SNU-C5/5-FU, fluorouracil-resistant human colon cancer cells. *Mar. Drugs* **13**, 1340-1359.

- Li, Y., Cao, H., Jiao, Z., Pakala, S. B., Sirigiri, D. N., Li, W., Kumar, R. and Mishra, L. (2010) Carcinoembryonic antigen interacts with TGF- $\beta$  receptor and inhibits TGF- $\beta$  signaling in colorectal cancers. *Cancer Res.* **70**, 8159-8168.
- Nguyen, H. T., Chau, V. M., Phan, V. K., Hoang, T. H., Nguyen, H. N., Nguyen, X. C., Tran, H. Q., Nguyen, X. N., Hyun, J. H., Kang, H. K. and Kim, Y. H. (2010) Chemical components from the Vietnamese soft coral *Lobophytum* sp. *Arch. Pharm. Res.* **33**, 503-508.
- Nicklas, D. and Saiz, L. (2013) Characterization of Negative Feedback Network Motifs in the TGF- $\beta$  Signaling Pathway. *PLoS ONE* **8**, e83531.
- Pendas-Franco, N., Aguilera, O., Pereira, F., Gonzalez-Sancho, J. M. and Munoz, A. (2008) Vitamin D and Wnt/ $\beta$ -catenin pathway in colon cancer: role and regulation of DICKKOPF genes. *Anticancer Res.* **28**, 2613-2623.
- Portella, G., Cumming, S. A., Liddell, J., Cui, W., Ireland, H., Akhurst, R. J. and Balmain, A. (1998) Transforming growth factor beta is essential for spindle cell conversion of mouse skin carcinoma in vivo: implications for tumor invasion. *Cell Growth Differ.* **9**, 393-404.
- Romano, S., Mallardo, M., Chiurazzi, F., Bisogni, R., D'Angelillo, A., Liuzzi, R., Compare, G. and Romano, M. F. (2008) The effect of FK506 on transforming growth factor beta signaling and apoptosis in chronic lymphocytic leukemia B cells. *Haematologica.* **93**, 1039-1048.
- Samara, R. N., Laguinge, L. M. and Jessup, J. M. (2007) Carcinoembryonic antigen inhibits anoikis in colorectal carcinoma cells by interfering with TRAIL-R2 (DR5) signaling. *Cancer Res.* **67**, 4774-4782.
- Schneikert, J. and Behrens, J. (2007) The canonical Wnt signalling pathway and its APC partner in colon cancer development. *Gut.* **56**, 417-425.
- Scudiero, D. A., Shoemaker, R. H., Paull, K. D., Monks, A., Tierney, S., Nofziger, T. H., Currens, M. J., Seniff, D. and Boyd, M. R. (1988) Evaluation of a soluble tetrazolium/formazan assay for cell growth and drug sensitivity in culture using human and other tumor cell lines. *Cancer Res.* **48**, 4827-4833.
- Sheen, Y. Y., Kim, M. J., Park, S. A., Park, S. Y. and Nam, J. S. (2013) Targeting the transforming growth factor- $\beta$  signaling in cancer therapy. *Biomol. Ther. (Seoul)* **21**, 323-331.
- Song, L., Li, Z. Y., Liu, W. P. and Zhao, M. R. (2015) Crosstalk between Wnt/ $\beta$ -catenin and Hedgehog/Gli signaling pathways in colon cancer and implications for therapy. *Cancer Biol. Ther.* **16**, 1-7.
- Sun, L., Wu, G., Willson, J. K., Zborowska, E., Yang, J., Rajkarunayake, I., Wang, J., Gentry, L. E., Wang, X. F. and Brattain, M. G. (1994) Expression of transforming growth factor  $\beta$  type II receptor leads to reduced malignancy in human breast cancer MCF-7 cells. *J. Biol. Chem.* **269**, 26449-26455.
- Thuault, S., Valcourt, U., Petersen, M., Manfioletti, G., Heldin, C. H. and Moustakas, A. (2006) Transforming growth factor- $\beta$  employs HMGA2 to elicit epithelial-mesenchymal transition. *J. Cell Biol.* **174**, 175-183.
- Xu, Y. and Pasche, B. (2007) TGF- $\beta$  signaling alterations and susceptibility to colorectal cancer. *Hum. Mol. Genet.* **16 Spec No 1**, R14-R20.