



Comprehensive understanding of atrial septal defects by imaging studies for successful transcatheter closure

Jinyoung Song, MD, PhD

Department of Pediatrics, Samsung Medical Center, Sungkyunkwan University School of Medicine, Seoul, Korea

Transcatheter closure of atrial septal defects has become a popular procedure. The availability of a preprocedural imaging study is crucial for a safe and successful closure. Both the anatomy and morphology of the defect should be precisely evaluated before the procedure. Three-dimensional (3D) echocardiography and cardiac computed tomography are helpful for understanding the morphology of a defect, which is important because different defect morphologies could variously impact the results. During the procedure, real-time 3D echocardiography can be used to guide an accurate closure. The safety and efficiency of transcatheter closures of atrial septal defects could be improved through the use of detailed imaging studies.

Key words: Atrial heart septal defects, Vascular access device, Echocardiography, X-ray computed tomography scanner

Corresponding author: Jinyoung Song, MD, PhD
Department of Pediatrics, Samsung Medical Center,
Sungkyunkwan University School of Medicine, 81
Irwon-ro, Gangnam-gu, Seoul 135-710, Korea
Tel: +82-2-3410-3539
Fax: +82-2-3410-0043
E-mail: amyjys@naver.com

Received: 2 May, 2014
Accepted: 31 May, 2014

Introduction

Atrial septal defect (ASD) is one of the most common congenital heart diseases encountered in outpatient clinics. Surgical closure has traditionally been accepted as the gold standard treatment for an ASD with volume overloading. Transcatheter device closure was developed as an alternative to surgery by King et al.¹⁾ in 1976 and accepted as a safe and effective treatment replacing surgical closure since the 2001 approval of the Amplatzer septal occluder (ASO) (St. Jude Medical Inc., St. Paul, MN, USA) by the United States Food and Drug Administration. However, due to the unfavorable anatomy of secundum ASD, a detailed evaluation of ASD has become crucial for device closure^{2,3)}. Thus, an evaluation of ASD in terms of successful transcatheter device closure is needed.

Diagnosis and indications for closure

Transthoracic echocardiography (TTE) is the gold standard for diagnosing ASD and has excellent sensitivity in young patients. In general, the subcostal view will definitely show ASD, and the apical four-chamber view and the parasternal short axis view are also helpful for making the diagnosis. However, when TTE imaging is poor due to obesity, previous thoracic surgery, or large breasts, transesophageal echocardiography (TEE) is an alternative that provides excellent images. High-resolution contrast computed tomography (CT) and advanced cardiac magnetic resonance imaging (MRI) can also be used to delineate ASD.

Copyright © 2014 by The Korean Pediatric Society

This is an open-access article distributed under the terms of the Creative Commons Attribution Non-Commercial License (<http://creativecommons.org/licenses/by-nc/3.0/>) which permits unrestricted non-commercial use, distribution, and reproduction in any medium, provided the original work is properly cited.

The general indications for closure include evidence of right cardiac volume overload even without symptoms. Before deciding on closure, bidirectional shunt and pulmonary hypertension associated with ASD should be evaluated with pulmonary vasodilators or the balloon occlusion test⁴. Indications for the closure of ASD in adults and children have been published by the American Heart Association^{5,6}. The timing of the intervention should not be fixed. Most ASDs are asymptomatic, but symptomatic ASDs should be corrected surgically at any age. Elective surgical closure of asymptomatic ASDs is performed at 3–5 years of age⁷. Transcatheter closure of an ASD with the ASO has been recommended for patients weighing >15 kg. However, the weight restriction has eased over time, and many authors reported safe and effective device closure in patients weighing <15 kg^{8,9}.

Anatomical evaluation

The sinus venosus, coronary sinus, and primum types of ASD require surgical closure while most secundum ASDs are amenable to transcatheter closure. In addition to the size of the ASD, the shape, number of defects, and surrounding rims are important for successful transcatheter closure. Usually, four or five rims should be evaluated before deciding on device closure. The anterior or retro-aortic rim can be evaluated on a parasternal short axis image. The posterior rim and anterior-inferior rim can be seen in the apical four-chamber view. The posterior-

superior and posterior-inferior rims should be evaluated from the subcostal view or right parasternal view. In general, a sufficient septal rim should surround an ASD >5 mm in all directions¹⁰. Although retro-aortic rim deficiency is very common, most ASDs with deficient retro-aortic rims are closed successfully by the ASO^{11,12}. However, an ASD with two or more deficient rims should not be closed with a device, as device embolization is highly expected in cases with significantly deficient posterior-inferior rims³. A sufficient rim is an indicator not only of length, but also of the floppiness of the rim tissue. Durongpitsikul et al.¹³ reported that a posterior-inferior rim length of at least 10 mm is safe for successful device closure of an ASD.

Two-dimensional (2D) echocardiography is an excellent method of evaluating ASDs. TTE has been used effectively and conveniently for ASD screening (Fig. 1), and TEE has been accepted as the best method for a complete evaluation of the defect for the purpose of device closure¹⁴ (Fig. 2). Nevertheless, the evaluation of the posterior-inferior rim may be incomplete in some patients¹³. TEE is uncomfortable for patients, and necessitates the use of sedation or anesthesia.

By contrast, cardiac CT offers superb spatial and temporal resolution with a short scanning time. It allows for detailed imaging not only of intracardiac structures, but also of coexisting anomalies. In my experience, additive abnormal findings that include extracardiac lesions as well as cardiac lesions can be detected on CT images. My experience includes the detection of silent coronary stenosis and lung problems outside of the ASD on CT images. Some reports addressed the usefulness of cardiac

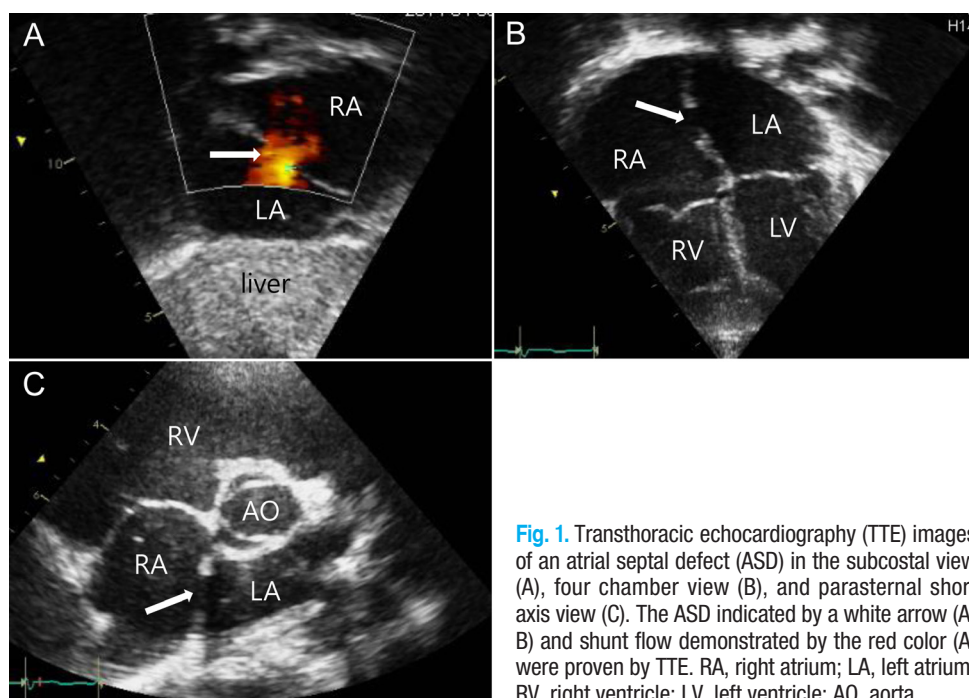


Fig. 1. Transthoracic echocardiography (TTE) images of an atrial septal defect (ASD) in the subcostal view (A), four chamber view (B), and parasternal short axis view (C). The ASD indicated by a white arrow (A, B) and shunt flow demonstrated by the red color (A) were proven by TTE. RA, right atrium; LA, left atrium; RV, right ventricle; LV, left ventricle; AO, aorta.

CT for ASD device closure and demonstrated superior resolution and measurement of the surrounding rims using cardiac CT^{15,16} (Fig. 3). However, the radiation hazard posed by CT should not be ignored despite the use of a minimal exposure technique. We recommend cardiac CT for selected cases that have a complicated ASD or a large ASD with a rim deficiency.

Very few reports are available on the use of cardiac MRI for evaluating an ASD prior to device closure^{17,18}. Although MRI poses no radiation hazard, the scanning time is much longer.

Shape and multiplicity

It is not surprising that many ASDs are not circular in shape,

and indeed complex ASD shapes have been described by some authors^{16,19-23}. Three-dimensional (3D) images should be reconstructed from 2D images for a complete understanding of defect shape. This can be achieved by real-time 3D TEE or 3D cardiac CT (Fig. 4). The preprocedural evaluation of an ASD undergoing device closure should be different from that used before surgical closure. Devices used for ASD closure do not reflect the various defect shapes, and all ASDs are assumed to be circular based on the longest diameter. However, the eccentricity of a defect could make a difference in device selection.

Device closure of an ASD that is 10 mm in the long diameter and 5 mm in the short diameter can differ from the closure of a nearly circular defect with a 10-mm diameter. Song et al.¹⁶ reported that an oval shaped ASD with a short diameter that was

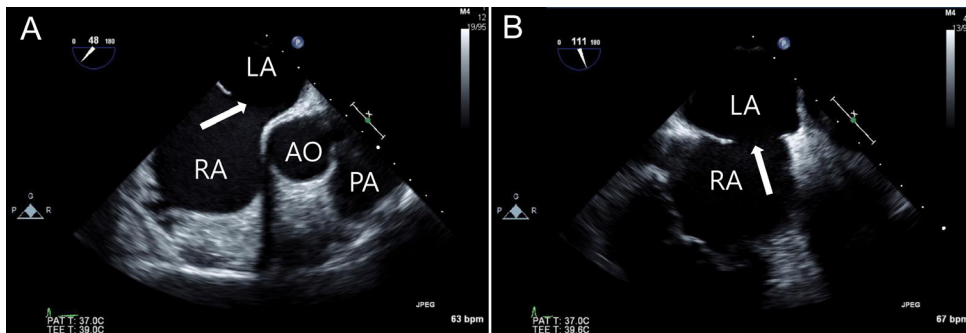


Fig. 2. Transesophageal echocardiography images of an atrial septal defect (ASD) in a 48-degree view showing a 21-mm defect (A) and a 111-degree view showing an 18-mm defect (B). The white arrow indicates ASD. RA, right atrium; LA, left atrium; AO, aorta; PA, pulmonary artery.

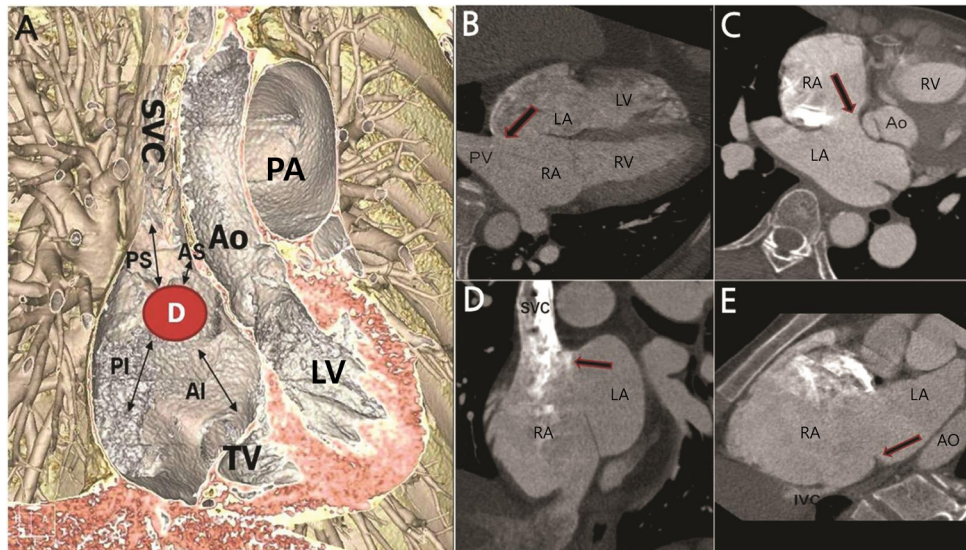


Fig. 3. (A) A three-dimensional image showing four different rims surrounding the defect. (B) Arrow on the axial tomography image indicating posterior rim deficiency. (C) Arrow indicating anterior-superior rim deficiency. (D) Arrow indicating posterior-superior rim deficiency. (E) Arrow indicating posterior-inferior rim deficiency. D, atrial septal defect; AS, anterior-superior; AI, anterior-inferior; PS, posterior-superior; PI, posterior-inferior; SVC, superior vena cava; TV, tricuspid valve; LV, left ventricle; AO, aorta; PA, pulmonary artery; RA, right atrium; LA, left atrium; PV, pulmonary vein; RV, right ventricle; IVC, inferior vena cava.

75% smaller than the long diameter could be closed safely with an ASO smaller than that used for a circular defect. They also reported their experience of a successful transcatheter closure of an ASD that was 45 mm in the long diameter and 24 mm in the short diameter with a 38-mm ASO¹⁶.

Multiple ASDs should be evaluated precisely in terms of device closure (Fig. 5). It is well known that defects within 7 mm of each other can frequently be closed with a single device. We experienced the successful closure of multiple ASDs with multiple ASOs or a cribriform device²⁴.

Two-dimensional echocardiographic images have difficulty in comprehensively defining the shape of an ASD or multiple ASDs. By contrast, the excellence of 3D images has been reported by many interventionists. Reconstructed en-face CT or TEE images are superior for visualizing the morphology and the number of defects^{16,22-25}. The morphology and location of the

defect may be more easily understood on 3D images obtained from CT than those obtained from TEE. However, in the case of an ASD with a very thin or floppy interatrial septum, defect size and morphology can easily be distorted on the basis of CT images. Even though understanding anatomy and location based on TEE images can be complicated, they can provide a more accurate defect size and shape. At present, real-time 3D TEE is used widely due to the much shorter time required for 3D reconstruction.

Size evaluation

Balloon sizing has been accepted as an integral part of ASD device closure with an ASO, but several reports described techniques that did not use balloon sizing^{16,23,26,27}. Oversizing has

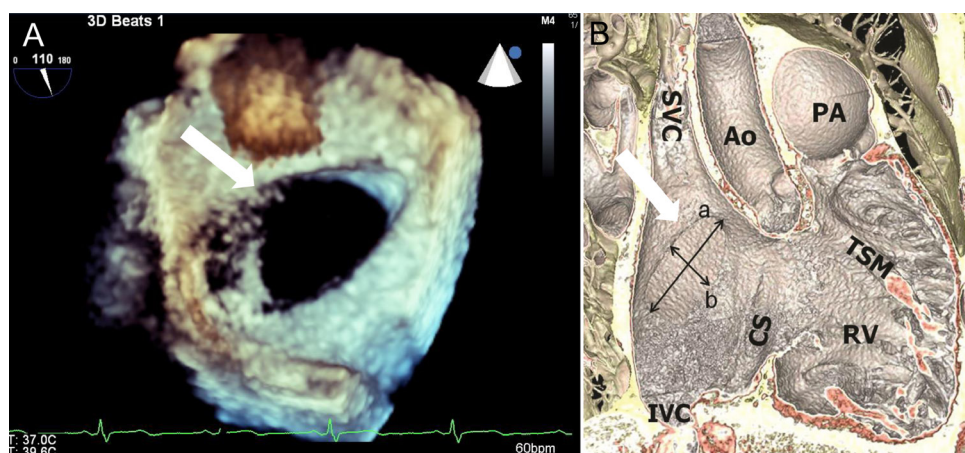


Fig. 4. Three-dimensional reconstructed en-face images of an atrial septal defect (white arrow) showing an ovoid, as opposed to a circular, shape from transesophageal echocardiography (A) and cardiac computed tomography (B). a, longest diameter of defect; b, shortest diameter of defect; SVC, superior vena cava; IVC, inferior vena cava; CS, coronary sinus; AO, aorta; RV, right ventricle; TSM, trabecular septomarginalis; PA, pulmonary artery.

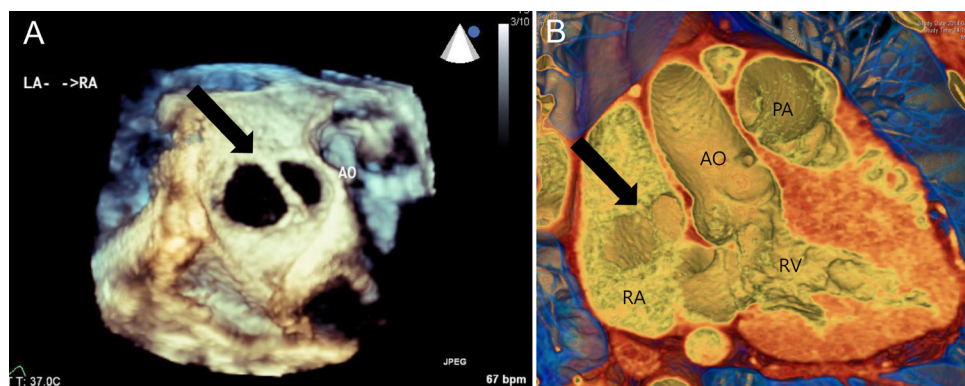


Fig. 5. The same patient's three-dimensional reconstructed en-face images showing two atrial septal defects (black arrow) from transesophageal echocardiography (A) and cardiac computed tomography (B). AO, aorta; PA, pulmonary artery; RA, right atrium; LA, left atrium; RV, right ventricle.

been suspected to play an important role in cardiac erosion after implantation and should be avoided during size selection. It is not surprising that a stretched balloon sizing technique results in frequent oversizing, which is why the stop-flow technique has replaced stretched balloon sizing²⁸⁾. Several reports have indicated that sizing with 3D TEE has similar results to those of the balloon sizing technique^{29,30)}. The longest diameter at the end-systole phase has been used to size the device, but defect morphology is often ignored when selecting device size. We identified a few reports that considered defect shape for deciding device size. Seo et al.³¹⁾ found that devices implanted using the balloon sizing technique in large oval shaped defects were smaller than those used in large circular defects, and suggested that device size could be selected using 3D TEE linear parameters. By contrast, Song et al.²³⁾ measured defect area by planimetry on an en-face 3D TEE image and found that the defect area correlated nicely with the device size selected by the stop-flow technique (Fig. 6). Taken together, these data indicate that

oversizing can be avoided by considering defect morphology in 3D images of the ASD.

Guiding images

Echocardiography can be used for monitoring during ASD catheter closure. In most cases, 2D TEE or intracardiac echocardiography (ICE) has been used during the procedure even though TTE can be used in some cases. The efficacy and safety of ICE have been demonstrated³²⁻³⁴⁾ (Fig. 7). Although it necessitates other venous access and a biplane image is not obtainable, ICE can be conveniently used by the same operator simultaneously. In particular, ICE provides a more accurate image of the posterior-inferior rim that is superior to a TEE image. An accurate size evaluation for adequate device size selection during the procedure can be performed by ICE. Rigatelli et al.³⁵⁾ reported their experience with ICE during ASD device closure, achieving a

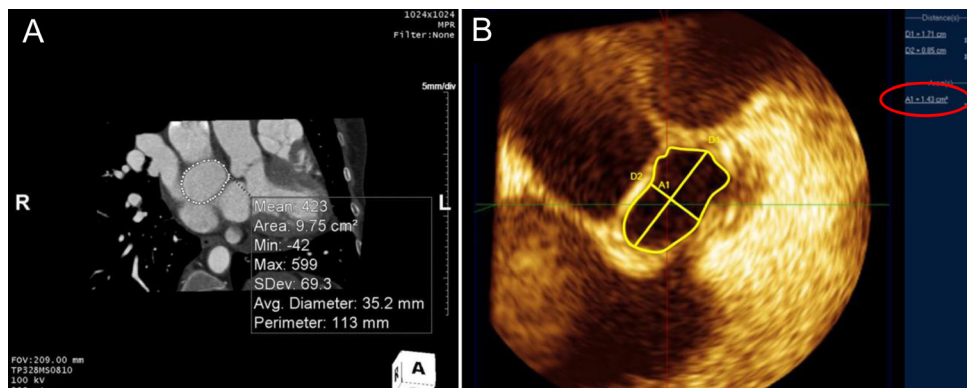


Fig. 6. The defect area was measured by planimetry on en-face images from 3-dimensional (3D) computed tomography (A) and 3D transesophageal echocardiography (B). (A) The measured area was 9.75 cm² and the average diameter was 35.2 mm. The longest diameter and shortest diameter of atrial septal defect were 17.1 mm and 8.5 mm, respectively. (B) The measured defect area described by the red circle was 1.41 cm².

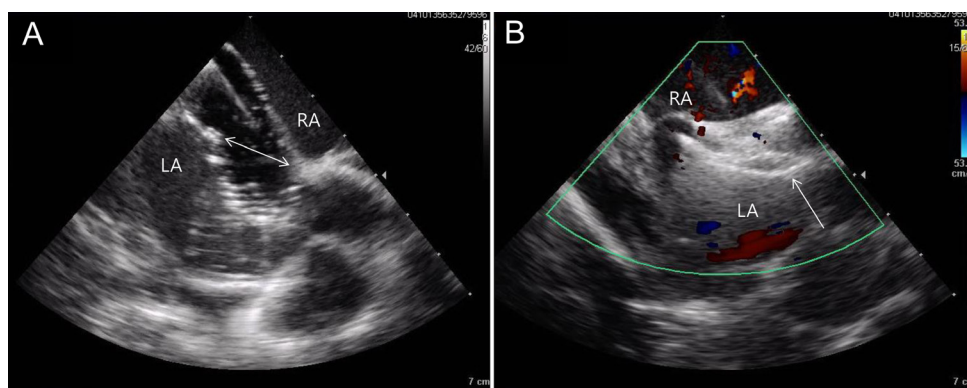


Fig. 7. Images of balloon sizing (A) and successful device implantation (B) from intracardiac echocardiography during transcatheter closure of an atrial septal defect (ASD). The balloon occlusive diameter (two-way arrow) was 14 mm (A) and a 16-mm Amplatzer septal occluder (arrow) was positioned appropriately on the ASD (B). LA, left atrium; RA, right atrium.

good outcome even without the use of balloon sizing methods.

Real-time 3D TEE provides several benefits during ASD device closure, such as visualization of the catheter and wire course, position of the device, and the interaction between the device and surrounding structures after implantation³⁶. In the case of multiple ASDs or a multifenestrated ASD, wire selection should be monitored for successful complete closure, and real-time 3D TEE is very helpful³⁷.

Conclusions

Although transcatheter closure of an ASD is technically simple and straightforward, an imaging study is potentially very important for the successful completion of the procedure. Three-dimensional TEE or CT reconstructed images are helpful for an accurate understanding of the morphology and preprocedure sizing. In cases of multiple ASDs, real-time 3D TEE can provide guidance during the procedure.

Conflict of interest

No potential conflict of interest relevant to this article was reported.

References

- King TD, Thompson SL, Steiner C, Mills NL. Secundum atrial septal defect: nonoperative closure during cardiac catheterization. *JAMA* 1976;235:2506-9.
- Vasquez AF, Lasala JM. Atrial septal defect closure. *Cardiol Clin* 2013;31:385-400.
- Kazmouz S, Kenny D, Cao QL, Kavinsky CJ, Hijazi ZM. Transcatheter closure of secundum atrial septal defects. *J Invasive Cardiol* 2013;25:257-64.
- Dimopoulos K, Peset A, Gatzoulis MA. Evaluating operability in adults with congenital heart disease and the role of pretreatment with targeted pulmonary arterial hypertension therapy. *Int J Cardiol* 2008;129:163-71.
- Warnes CA, Williams RG, Bashore TM, Child JS, Connolly HM, Dearani JA, et al. ACC/AHA 2008 Guidelines for the Management of Adults with Congenital Heart Disease: a report of the American College of Cardiology/American Heart Association Task Force on Practice Guidelines (writing committee to develop guidelines on the management of adults with congenital heart disease). *Circulation* 2008;118:e714-833.
- Feltes TF, Bacha E, Beekman RH 3rd, Cheatham JP, Feinstein JA, Gomes AS, et al. Indications for cardiac catheterization and intervention in pediatric cardiac disease: a scientific statement from the American Heart Association. *Circulation* 2011;123:2607-52.
- Rao PS. Consensus on timing of intervention for common congenital heart diseases: part I - acyanotic heart defects. *Indian J Pediatr* 2013;80:32-8.
- Diab KA, Cao QL, Bacha EA, Hijazi ZM. Device closure of atrial septal defects with the Amplatzer septal occluder: safety and outcome in infants. *J Thorac Cardiovasc Surg* 2007;134:960-6.
- Kim NK, Park SJ, Choi JY. Transcatheter closure of atrial septal defect: does age matter? *Korean Circ J* 2011;41:633-8.
- Cooke JC, Gelman JS, Harper RW. Echocardiologists' role in the deployment of the Amplatzer atrial septal occluder device in adults. *J Am Soc Echocardiogr* 2001;14:588-94.
- Mathewson JW, Bichell D, Rothman A, Ing FF. Absent postero-inferior and anterosuperior atrial septal defect rims: factors affecting nonsurgical closure of large secundum defects using the Amplatzer occluder. *J Am Soc Echocardiogr* 2004;17:62-9.
- Huang CF, Fang CY, Ko SF, Chien SJ, Lin IC, Lin YJ, et al. Transcatheter closure of atrial septal defects with superior-anterior rim deficiency using Amplatzer septal occluder. *J Formos Med Assoc* 2007;106:986-91.
- Durongpisitkul K, Tang NL, Soongswang J, Laohaprasitiporn D, Nana A. Predictors of successful transcatheter closure of atrial septal defect by cardiac magnetic resonance imaging. *Pediatr Cardiol* 2004;25:124-30.
- Latiff HA, Samion H, Kandhavel G, Aziz BA, Alwi M. The value of transesophageal echocardiography in transcatheter closure of atrial septal defects in the oval fossa using the Amplatzer septal occluder. *Cardiol Young* 2001;11:201-4.
- Ko SF, Liang CD, Yip HK, Huang CC, Ng SH, Huang CF, et al. Amplatzer septal occluder closure of atrial septal defect: evaluation of transthoracic echocardiography, cardiac CT, and transesophageal echocardiography. *AJR Am J Roentgenol* 2009;193:1522-9.
- Song J, Lee SY, Baek JS, Shim WS, Choi EY. Outcome of transcatheter closure of oval shaped atrial septal defect with amplatzer septal occluder. *Yonsei Med J* 2013;54:1104-9.
- Weber C, Dill T, Mommert I, Hofmann T, Adam G. The role of MRI for the evaluation of atrial septal defects before and after percutaneous occlusion with the amplatzer septal occluder(R). *Rofo* 2002;174:1387-94.
- Durongpisitkul K, Tang NL, Soongswang J, Laohaprasitiporn D, Nana A, Kangkagate C. Cardiac magnetic resonance imaging of atrial septal defect for transcatheter closure. *J Med Assoc Thai* 2002;85 Suppl 2:S658-66.
- Johri AM, Witzke C, Solis J, Palacios IF, Inglessis I, Picard MH, et al. Real-time three-dimensional transesophageal echocardiography in patients with secundum atrial septal defects: outcomes following transcatheter closure. *J Am Soc Echocardiogr* 2011;24:431-7.
- Roberson DA, Cui W, Patel D, Tsang W, Sugeng L, Weinert L, et al. Three-dimensional transesophageal echocardiography of atrial septal defect: a qualitative and quantitative anatomic study. *J Am Soc Echocardiogr* 2011;24:600-10.
- Acar P. Three-dimensional echocardiography in transcatheter closure of atrial septal defects. *Cardiol Young* 2000;10:484-92.
- Huang X, Shen J, Huang Y, Zheng Z, Fei H, Hou Y, et al. En face view of atrial septal defect by two-dimensional transthoracic echocardiography: comparison to real-time three-dimensional transesophageal echocardiography. *J Am Soc Echocardiogr* 2010;23:714-21.
- Song J, Kang IS, Chang SA, Huh J, Park SW. Application of the defect area in transcatheter closure of atrial septal defect. *Cardiology* 2014;127:90-5.
- Cho MJ, Song J, Kim SJ, Choi EY, Lee SY, Shim WS. Transcatheter closure of multiple atrial septal defects with the amplatzer device. *Korean Circ J* 2011;41:549-51.

25. Watanabe N, Taniguchi M, Akagi T, Tanabe Y, Toh N, Kusano K, et al. Usefulness of the right parasternal approach to evaluate the morphology of atrial septal defect for transcatheter closure using two-dimensional and three-dimensional transthoracic echocardiography. *J Am Soc Echocardiogr* 2012;25:376-82.
26. Zanchetta M, Onorato E, Rigatelli G, Pedon L, Zennaro M, Carrozza A, et al. Intracardiac echocardiography-guided transcatheter closure of secundum atrial septal defect: a new efficient device selection method. *J Am Coll Cardiol* 2003;42:1677-82.
27. Gupta SK, Sivasankaran S, Bijulal S, Tharakan JM, Harikrishnan S, Ajit K. Trans-catheter closure of atrial septal defect: balloon sizing or no Balloon sizing - single centre experience. *Ann Pediatr Cardiol* 2011;4:28-33.
28. Amin Z, Hijazi ZM, Bass JL, Cheatham JP, Hellenbrand WE, Kleinman CS. Erosion of Amplatzer septal occluder device after closure of secundum atrial septal defects: review of registry of complications and recommendations to minimize future risk. *Catheter Cardiovasc Interv* 2004;63:496-502.
29. Magni G, Hijazi ZM, Pandian NG, Delabays A, Sugeng L, Laskari C, et al. Two- and three-dimensional transesophageal echocardiography in patient selection and assessment of atrial septal defect closure by the new DAS-Angel Wings device: initial clinical experience. *Circulation* 1997;96:1722-8.
30. Zhu W, Cao QL, Rhodes J, Hijazi ZM. Measurement of atrial septal defect size: a comparative study between three-dimensional transesophageal echocardiography and the standard balloon sizing methods. *Pediatr Cardiol* 2000;21:465-9.
31. Seo JS, Song JM, Kim YH, Park DW, Lee SW, Kim WJ, et al. Effect of atrial septal defect shape evaluated using three-dimensional transesophageal echocardiography on size measurements for percutaneous closure. *J Am Soc Echocardiogr* 2012;25:1031-40.
32. Baglini R. Intracardiac echocardiography in monitoring atrial septal defect percutaneous closure: initial experience in an adult laboratory. *Int J Cardiol* 2007;114:274-6.
33. George JC, Varghese V, Mogtader A. Intracardiac echocardiography: evolving use in interventional cardiology. *J Ultrasound Med* 2014;33:387-95.
34. Rigatelli G, Dell' Avvocata F, Cardaioli P, Giordan M, Vassiliev D, Nghia NT, et al. Five-year follow-up of intracardiac echocardiography-assisted transcatheter closure of complex ostium secundum atrial septal defect. *Congenit Heart Dis* 2012;7:103-10.
35. Rigatelli G, Dell'avvocata F, Cardaioli P, Giordan M, Dung HT, Nghia NT, et al. Safety and long-term outcome of modified intracardiac echocardiography-assisted "no-balloon" sizing technique for transcatheter closure of ostium secundum atrial septal defect. *J Interv Cardiol* 2012;25:628-34.
36. Lodato JA, Cao QL, Weinert L, Sugeng L, Lopez J, Lang RM, et al. Feasibility of real-time three-dimensional transoesophageal echocardiography for guidance of percutaneous atrial septal defect closure. *Eur J Echocardiogr* 2009;10:543-8.
37. Nasis A, Harper RW, Mottram PM. Real-time three-dimensional transoesophageal echocardiography for guidance of transcatheter closure of a complex multifenestrated atrial septal defect. *Heart Lung Circ* 2011;20:343-4.