

Original article:

**KNOCKDOWN OF CSNK2B SUPPRESSES MDA-MB-231
CELL GROWTH, INDUCES APOPTOSIS, INHIBITS MIGRATION
AND INVASION**

Shibendra Kumar Lal Karna, Bilal Ahmad Lone, Faiz Ahmad, Nerina Shahi,
Yuba Raj Pokharel*

Faculty of Life Science and Biotechnology, South Asian University, Akbar Bhawan,
Chanakyapuri, New Delhi-110021, India

* **Corresponding author:** Yuba Raj Pokharel, Faculty of Life Science and Biotechnology,
South Asian University, New Delhi-110021, India, Phone no- +91-11-24122512,
Fax-+91-1124122511, E-mail: yrp@sau.ac.in

<http://dx.doi.org/10.17179/excli2020-2363>

This is an Open Access article distributed under the terms of the Creative Commons Attribution License
(<http://creativecommons.org/licenses/by/4.0/>).

ABSTRACT

Breast cancer is the most common cancer among women worldwide. Among different types of breast cancer known, treatment of triple-negative breast cancer is a major challenge because of its aggressiveness and poor prognosis; thus, identification of specific drivers is required for targeted therapies of breast cancer malignancy. Protein Casein Kinase (CSNK) is a serine/threonine kinase that exists as a tetrameric complex consisting of two catalytic (α and/or α') and two regulatory β subunits. CSNK2 β can also function independently without catalytic subunits and exist as a distinct population in cells. This study aims to elucidate the role of Casein Kinase 2 β (CSNK2 β) gene in cell proliferation, cell cycle, migration and apoptosis of triple-negative breast cancer MDA-MB-231 cells. The silencing of CSNK2 β in MDA-MB-231 cells resulted in decreased cell viability and colony formation. Cell cycle analysis showed a significant arrest of cells in G2M phase. Hoechst and CM-H2DCFDA staining showed nuclear condensation and augmented intracellular reactive oxygen species (ROS) production. Furthermore, silencing of CSNK2 β in MDA-MB-231 cells modulated the apoptotic machinery- BAX, Bcl-xL, and caspase 3; autophagy machinery-Beclin-1 and LC3-1; and inhibited the vital markers (p-ERK, c-Myc, NF- κ B, E2F1, PCNA, p38- α) associated with cell proliferation and DNA replication pathways. In addition, knockdown of CSNK2 β also affected the migration potential of MDA-MB-231, as observed in the wound healing and transwell migration assays. Altogether, the study suggests that CSNK2 β silencing may offer future therapeutic target in triple-negative breast cancer.

Keywords: CSNK2 β , breast cancer, apoptosis, migration

INTRODUCTION

Casein Kinase 2(CSNK2), a highly conserved, multifunctional serine/threonine protein kinase, is critically important for the regulation of different processes in eukaryotes, such as proliferation, differentiation, and apoptosis (Guerra and Issinger, 1999).

CSNK2 is ubiquitously expressed in all tissues, but its level is elevated in tumor tissues including the prostate (Yenice et al.,1994), mammary gland (Landesman-Bollag et al., 2001), head and neck (Faust et al.,1996), lungs (Daya-Makin et al., 1994) and kidney (Stalter et al., 1994). CSNK2 possesses a heterotetrameric conformation with two catalytic

(α and/or α') and two regulatory (2β) subunits (Litchfield, 2003). CSNK2 β supports the structure of the tetrameric complex, augments catalytic activity, the stability of CSNK2, and can also function independently with other catalytic subunits (Litchfield, 2003). In mammalian cells, CSNK2 β is phosphorylated at Ser 209 and autophosphorylated at Ser 53B in a cell cycle-dependent manner (Messenger et al., 2002). CSNK2 β is responsible for the recruitment of CSNK2 substrates or potential regulators such as Nopp140, p53, Fas-associated factor-1 (FAF-1), topoisomerase II, CD5 and fibroblast growth factor-2 (FGF-2) (Li et al., 1997; Filhol et al., 1992; Appel et al., 1995; Jensen et al., 2001). Ectopic expression of CSNK2 β in mouse 3T3-L1 adipocytes and in CHO cells increased proliferation (Li et al., 1999). The proliferative effects of CSNK2 β vary in different cell lines. Deletion of gene encoding CSNK2 β in mice leads to a failure in development (Ahmed et al., 2002). In our previous work, we have shown CSNK2 β among the top 10 Pin1 interacting proteins that might be contributing the oncogenic activity of Pin1 (Pokharel et al., 2015), a cis-trans isomerase, and highly expressed in many cancers (Chen et al., 2018). In the same work, it has been found that siRNA knock-down of CSNK2 β potentially inhibited the oncogene Pin1 that supports the notion that CSNK2 β is vital for cancer pathogenesis. In a patient sample-based study, the positive expression correlation was observed between CSNK2 β and XIAP in cholangiocarcinoma patients and CSNK2 β was significantly associated with TNM stage ($P=0.036$) (Zhou et al., 2014). In a recent study, it has been found that traditional Chinese medicine huaier improves the survival rate of breast cancer patients by modulating the linc00339/mir-4656/CSNK2 β pathways (Wang et al., 2019). Together these reports suggest the significance of CSNK2 β in cancer progression. The independent existence of CSNK2 β without its catalytic subunit has also been reported (Krek et al., 1992; Guerra et al., 1999), that suggests CSNK2 β can play roles apart from the regulatory function of CSNK. Thus, the biology of

CSNK2 β , and its CSNK2 α independent function particularly in cancer needs to be further explored.

To understand its independent physiological importance in the regulation of multiple candidate target proteins, we focused our study on the role of CSNK2 β in the tumorigenesis of human breast cancer (MDA-MB-231 cell) *in vitro*. In the present study, we used the RNA interference strategy to knock-down the CSNK2 β gene and studied the gross oncogenic activity in an *in vitro* cell-based system. We evaluated its proliferative, clonogenic, invasive, and apoptotic properties in MDA-MB-231 cells using siRNA technology. We found that CSNK2 β regulates the cell proliferation by targeting NF- κ B, Wnt, and MAPK pathway proteins. Our findings suggest that CSNK2 β can be used as a novel target for breast cancer therapy.

MATERIALS AND METHODS

Reagents

Lipofectamine RNAiMAX, TRIzol, Propidium Iodide, RNase were purchased from Invitrogen Corp (Carlsbad, CA, USA). siRNA was obtained from Qiagen (Hilden, Germany). Cell culture reagents and flasks were purchased from HiMedia (France) and Corning Inc. (Corning, New York, USA). SYBR Green was purchased from Bio-Rad (Hercules, California). Antibodies were obtained from Santa Cruz Biotechnology (Dallas, Texas, USA), Cloud-Clone Corp. (Houston, USA). Cell Titer-Glo reagent was purchased from Promega Corp. (Madison, Wisconsin, USA).

Cell culture

MDA-MB-231 cell was purchased from National Centre for Cell Science (Pune, India). The cells were cultured in L-15 medium supplemented with 10 % Fetal Bovine Serum (FBS), penicillin (100 unit/ml) and streptomycin (100 μ g/ml). The cell culture was maintained at 37 °C in humidified air containing 5 % CO₂.

Transfection

We used functionally verified siRNA directed against human CSNK2 β (NM_001320), purchased from Qiagen with no potential off-targets prevalidated in HeLa cell line (Catalog Number: SI00605185). Also, predesigned negative control siRNA (Scramble) from Qiagen was used in our experiments (Catalog Number /ID: 1027310). Cells were cultured in 6 well plates one day before siRNA transfection. We used 25 nanomolar of each siRNA and made complex in Opti-MEM media. Similarly, the complex of Lipofectamine RNAiMAX (4 μ l/each well) and Opti-MEM was made and incubated for 5 minutes at room temperature. After that, both the complexes were mixed in 1:1 proportion and incubated for 25 minutes at room temperature. Cells were treated with Opti-MEM-siRNA-Lipofectamine complex and incubated at 37 °C for 72 hours. The sequences used in siRNA and the target sequence for the genes in our study are mentioned below (Table 1).

Cell viability assay

Cell viability was assessed with CellTiter-Glo (CTG) assay (Promega, Madison, WI). Briefly, MDA-MB-231 cells were seeded in 96 well white cell culture plate at a density of 3000 cells per 180 μ l of medium per well with 20 μ l of siRNA complexes for CSNK2 β and Scramble and incubated at 37 °C, 5 % CO₂ for 24 hours. On the next day, the media containing the complex was changed with the fresh media and further incubated till 96 hours. The cells were treated in quadruplets with respective siRNAs. The reagents were prepared according to the manufacturer's protocol. After incubation, 100 μ l of fresh media was added

to each well followed by 100 μ l of reagent and kept on a shaker for 2 minutes to induce the cell lysis. The plate was incubated for 10 minutes at room temperature to stabilize the luminescence signal. Luminescence was measured using a microplate ELISA reader (Bio Tek, Winooski, Vermont, US).

Colony formation assay

MDA-MB-231 cells were transfected with Scramble and CSNK2 β siRNA and incubated for 48 hours. After the cells were trypsinized, collected and counted, 500 cells/well were taken from each Scramble and CSNK2 β transfected samples and seeded in 6 wells plate. After every two days, the medium was changed, and the cells were grown for three weeks. Then the cells were washed with Dulbecco's Phosphate Buffered Saline (DPBS), fixed with 3.7 % formaldehyde for 10 min and stained with 0.4 % crystal violet. The cells were washed with DPBS for 2-3 times and allowed to dry. The colonies were counted using Image J software.

Wound healing assay

MDA-MB-231 cells were plated in 6 well plates (4 \times 10⁵ cells/well) and transfected with Scramble and CSNK2 β siRNA as mentioned above. After the cells reached 90 % confluence, a wound was made in the center of the plate by scrapping the cells monolayer with 10 μ l tip. The cells were washed with sterile DPBS to remove the detached cells. The width of the wound area was measured at different time points using an inverted microscope. Densitometry analysis of wound area was carried by using Image J software.

Table 1: Sequences of siRNAs used for transfection of cells

siRNA	Scramble	CSNK2 β
Target sequence	5'-AATTCTCCGAACGTGTCACGT -3'	5'-CAGGACAAATTTAATCTTACT-3'
Sense strand	5'-UUCUCCGAACGUGUCAC-GUdTdT-3'	5'-GGACAAAUUUAAUCUUACUTT-3'
Anti-sense strand	5'-ACGUGACACGUUCGGA-GAAdTdT-3'	5'-AGUAAGAUUAAAUUUGUCCTG-3'

Matrigel invasion assay

Transwell chambers (Corning) were used for invasion assay. MDA-MB-231 cells were transfected with CSNK2 β siRNA and post 48 hours of transfection, cells (5×10^4) were harvested and transferred to the upper chamber of transwell, pre-coated with matrigel, in 200 μ L of serum free L-15 media whereas lower chamber consisted of complete media serving as a chemoattractant for the cells. Following 24 hours of incubation, cells in the upper surface of chambers were removed with a cotton swab, and the cells invaded through matrigel at the lower surface were fixed in 70 % ethanol and stained with 0.4 % crystal violet. Quantification of invaded cells was done by counting in six random fields.

Cell cycle analysis

2.5×10^5 cells were seeded in 6 well plates and transfection was done as mentioned before. The cell cycle analysis was performed 48 hours post-transfection using BD FACS Verse™. The cells were pooled out and fixed with ice-cold 70 % ethanol and kept overnight at 4 °C. On the next day, the cells were washed with DPBS for two times. The cells were further digested with RNase A (50 U/ml) at 37 °C for 1 hour and then stained with propidium iodide (20 μ g/ml) at room temperature for 20 min. The samples were acquired by flow cytometer and results were analyzed by ModFit software.

Western blotting

MDA-MB-231 cells were cultured in 6 well plates. On the next day, cells were transfected with Scramble and CSNK2 β siRNA and incubated for 72 hours. After incubation, the cells were washed twice with ice-cold DPBS and then lysed with sodium dodecyl sulfate (SDS) lysis buffer. The samples were heated for 5 minutes at 100 °C. The samples were run on SDS-PAGE, transferred to polyvinylidene (PVDF) membrane (90 volts for 2 hours). The membranes were blocked using 5 % skim milk in Tris-buffered saline with

0.1 % tween-20 (TBST) for 2 hours at room temperature. The blots were incubated with primary antibodies overnight at 4 °C on a rocker followed by incubation with horseradish peroxidase (HRP) conjugated secondary antibodies. The blots were developed using enhanced chemiluminescence (ECL, Biorad). β actin was used as a loading control. The list of antibodies with their working dilution is mentioned in Table 2.

RNA extraction, cDNA preparation, and real time PCR

Cells were transfected for 72 hours with the respective siRNAs and RNA was extracted using TRIzol lysis reagent using manufacturer's protocol. 2 μ g of RNA was taken and pre-treated with DNase followed by cDNA synthesis with oligoDT primers. The thermocycler condition was 65 °C, 5 min, 42 °C, 60 min and 72 °C (final extension). Real time PCR was done with iTaq SYBRgreen mix (Biorad) using ABI 700 (Invitrogen). The Real time PCR thermocycler condition was as Hold stage 95 °C (10 min), PCR Stage (40 cycles) 95 °C (15 sec), 60 °C (1 min) and melt curve stage 95 °C (15 sec), 60 °C (1 min), 95 °C (15 sec). Gapdh was used as a housekeeping gene. mRNA expression analysis was done by the delta-delta-Ct method. The expression of each gene in CSNK2 β siRNA treated sample was compared with Scramble. The sequences of primers used are mentioned in Table 3.

Hoechst staining

1.5×10^5 cells were seeded in 6 well plates. On the next day, the cells were transfected with Scramble and CSNK2 β siRNA and incubated for 72 hours. Then the cells were stained with Hoechst 33342 for 15 minutes in the dark. Cells were once washed with DPBS and the images were taken using Nikon fluorescent microscope.

Table 2: List of antibodies used for western blot analysis

S/NO.	ANTIBODY	MANUFACTURER	CATALOG NO.	DILUTION
1	β-Integrin1	Cloud clone corp.	PAB042Hu01	1:500
2	E-Cadherin	Cloud clone corp.	PAA017Hu01	1:500
3	Vimentin	Cloud clone corp.	PAB040Hu01	1:500
4	MMP9	Cloud clone corp.	PAA553Hu01	1:500
5	β-Actin	Cloud clone corp.	PAB340Mi01	1:2000
6	Bax	Santa Cruz Biotechnology Inc.	Sc-20067	1:500
7	Bcl-XI	Santa Cruz Biotechnology Inc.	Sc-8392	1:500
8	Caspase 3	Santa Cruz Biotechnology Inc.	Sc-7148	1:500
9	LC-3	Cloud clone corp.	PAL701Hu01	1:500
10	Beclin 1	Cloud clone corp.	PAJ557Hu01	1:500
11	CSNK2β	Santa Cruz Biotechnology Inc.	Sc-46666	1:1000
12	PCNA	Cloud clone corp.	PAA591Mi01	1:1000
13	c-Myc	Santa Cruz Biotechnology Inc.	Sc-764	1:1000
14	NF-κB	Santa Cruz Biotechnology Inc.	Sc-8008	1:1000
15	E2F1	Santa Cruz Biotechnology Inc.	Sc-251	1:500
16	p-ERK	Santa Cruz Biotechnology Inc.	Sc-16982	1:500
17	p-38	Santa Cruz Biotechnology Inc.	Sc-535	1:500

Table 3: Sequences of primers used for mRNA expression analysis by Real time PCR

GENE	FORWARD PRIMER SEQUENCE	REVERSE PRIMER SEQUENCE
CSNK2β	5'-CAGGACAAATTTAATCTTACT-3'	5'-AGUAAGAUUAAUUUGUCCTG-3'
E2F1	5'-ACTCAGCCTGGAGCAAGAAC-3'	5'-GGTGGGGAAAGGCTGATGAA-3'
p21	5'-CTGCCCAAGCTCTACCTTCC-3'	5'CGAGGCACAAAGGGTACAAGA-3'
CIAP	5'-AAGGAGTCTTGCTCGTGCTG-3'	5'-AGCATCAGGCCACAACAGAA-3'
mTOR	5'-GCAGAAGGTGGAGGTGTTT-3'	5'-CATTGACATGACCCCTAAAGAACG-3'
PCNA	5'-TCTGAGGGCTTCGACACCTA-3'	5'-CATTGCCGGCGCATTTTAGT-3'
SURVIVIN	5'-GGACCACCGCATCTCTACAT-3'	5'-GAAACACTGGGCCAAGTCT-3'
SLUG	5'-ACGCCTCCAAAAGCCAAAC-3'	5'-ACTCACTCGCCCCAAGATG-3'
Oct4	5'-GAGAACCGAGTGAGAGGCAAC-3'	5'-CTGATCTGCTGCAGTGTGGGT-3'
NANOG	5'-TCTCTCCTTCTCCTCCAT-3'	5'-TGCAGAAGTGGTTGTTTGC-3'
SOX2	5'-TTTGTGCGGAGACGGAGAAGC-3'	5'-TAACTGTCCATGCGCTGGTT-3'
CYCLIN E1	5'-ATACTTGCTGCTTCGGCCTT-3'	5'-TCAGTTTTGAGCTCCCCGTC-3'
CYCLIN A1	5'-GAAAATGCCTTCCCTCCAGC-3'	5'-TGTGCCGGTGTCTACTTCAT-3'
CYCLIN B1	5'-AGGCGAAGATCAACATGGCA-3'	5'-AGGCGAAGATCAACATGGCA-3'
GAPDH	5'-GTGAACCATGAGAAGTATGACAAC-3'	5'-CATGAGTCCTTCCACGATAAC-3'

Apoptosis assay

Cell apoptosis assay was performed by flow cytometry using an Annexin V-FITC/propidium iodide (PI) apoptosis detection kit (BD Biosciences). Cells were seeded in triplicates in a 6-well plate at the density of 2×10^5 cells per well. After 48 hours of transfection with Scramble and CSNK2β siRNA, the cells

were harvested and the Annexin V-FITC/PI assay was performed according to the manufacturer's instruction. A total of 30,000 cells were analyzed using FACSuite software. The percentage of cells in different phases of apoptosis was examined.

Measurement of the intracellular reactive oxygen species (ROS) production

Intracellular reactive oxygen species generation was assessed by fluoroprobe CM-H2DCFDA (Invitrogen). 1.5×10^5 cells were cultured in 6 well plates and transfected with the Scramble and CSNK2 β siRNA for 72 hours. The cells were treated with 10 μ M CM-H2DCFDA for 30 min in the dark at 37 °C. The wells were once washed with DPBS and the images were captured using a fluorescence microscope (Nikon Ti).

Statistical analysis

Data were represented as a mean \pm standard deviation. The level of significance between the two groups was calculated by Student's t-test. $P < 0.05$ was considered statistically significant.

Bioinformatics

Mutational status of CSNK2 β across different cancers was carried out using cBioPortal (<https://www.cbioportal.org/>). Kaplan-Meier curves of relapse-free survival for breast cancer patients were evaluated by Kaplan-Meier plotter (KM-potter, <https://kmplot.com/analysis/>). Cancer and normal gene expression profiling of CSNK2 β were examined by GEPIA (<http://gepia.cancer-pku.cn/>) and MERAV (<http://merav.wi.mit.edu/>) online servers.

RESULTS

Comparative analysis of CSNK2 β expression in multiple cancer types and the correlation with overall survival

To understand the expression status of CSNK2 β in different cancers, we used the datasets retrieved from cBioportal (Cerami et al., 2012) and compared the genomic alterations in multiple tumors. CSNK2 β showed a high

degree of amplification in most cancer types followed by deletion and mutation (Figure 1A). The TCGA data retrieved from cBioportal shows about 14 % gene amplification of CSNK2 β in breast cancer. Next, we checked the expression status of CSNK2 β in different cancers using the GEPIA database (Tang et al., 2017). Among 32 different cancers showed in the panel, expression is significantly higher in bladder urothelial carcinoma, breast invasive carcinoma and mesothelioma (Figure 1B). We also observed the distribution of CSNK2 β gene expression between breast tumor tissue and adjacent tissue using MERAV database (<http://merav.wi.mit.edu/>) (Shaul et al., 2016). As shown in Figure 1C, the expression of CSNK2 β is upregulated in breast tumors. To evaluate whether CSNK2 β could be a prognostic factor for breast cancer patients, we examined mRNA expression status of CSNK2 β in a large cohort of datasets containing 3951 breast cancer patients with online KM-Plotter software (<http://kmplot.com/analysis/>) (Györfy et al., 2010) and analyzed the correlation between CSNK2 β expression and patient survival. Kaplan–Meier analysis using KM-plotter revealed that a group with higher CSNK2 β expression have significantly poorer relapse-free survival (RFS) ($p < 0.001$, longrank) (Figure 1D). The correlation of CSNK2 β gene expression and RFS was evaluated using microarray data set containing breast cancer expression profiling from Gene Expression Omnibus (GEO). Kaplan-Meier estimates of RFS were calculated by splitting the patients into high- and low-expressing groups. The hazard ratio, log-rank P -value and number of breast cancer patients in each group are shown on the KM plot. Together, these results suggest that CSNK2 β is clinically important for cancer pathogenesis and correlates with patient outcome.

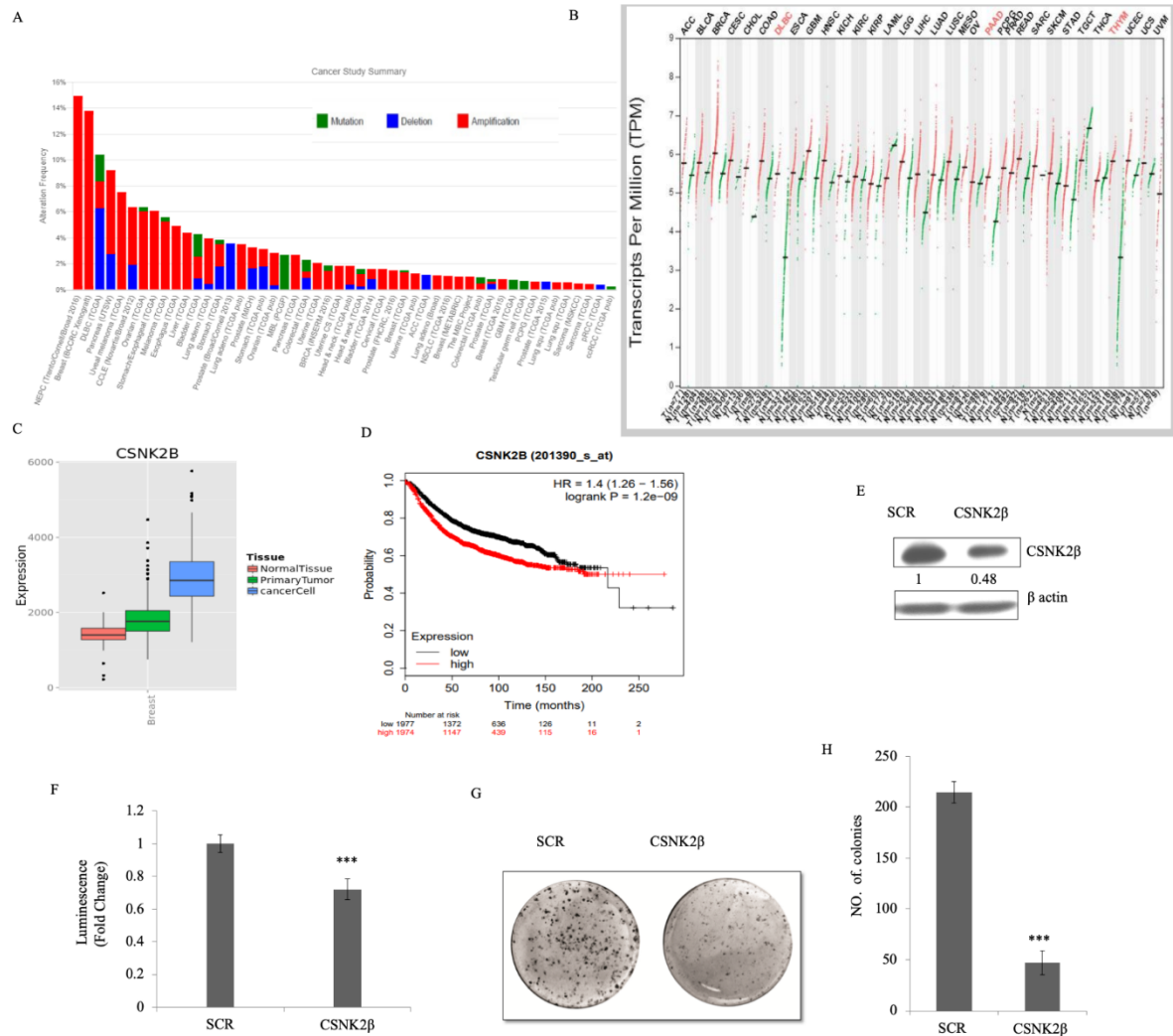


Figure 1: CSNK2 β expression in multiple cancer types and its functional role in breast cancer cell proliferation. (A) Mutational status of CSNK2 β across human cancers based on cBioPortal data. Histogram representing the mutational landscape (mutation, amplification, and deep deletion) of CSNK2 β in different types of cancer. (B) The gene expression profile across all tumor samples and paired normal tissues using GEPIA database. For each tumor (red), its matched normal (green) are given; T: tumor; N: normal; n: number. Y-axis represents a transcript per million in log scale, whereas X-axis represents the number of tumors and normal samples. Each dot represents expression of samples; the data for breast cancer lie in a third column. (C) Comparison of gene expression between breast tumor tissue and adjacent normal tissue using MERAV database. (D) Kaplan-Meier survival curve of the mRNA expression of CSNK2 β for breast cancer patients (n=3951) using the KM-plotter database. (E and F) Silencing of CSNK2 β and evaluation of its expression by western blot followed by determination of cell viability by CTG assay. The values below the blot represent the densitometry of the corresponding band compared to loading control β actin. The experiments were performed in triplicates. (G and H) The knockdown of CSNK2 β decreases the colony formation potential of MDA-MB-231 cells. Bar graphs depict the number of colonies in each sample. Data are represented as mean \pm SD from triplicate samples, where *** denotes $p < 0.001$.

Silencing of CSNK2 β inhibited the proliferation of MDA-MB-231 cells

To study the knocking down effect of CSNK2 β *in vitro*, we silenced the expression of CSNK2 β using the siRNA approach and evaluated the CSNK2 β protein level. The result showed the silencing of CSNK2 β was efficient compared to scrambled siRNA (SCR) (Figure 1E). Next, cell viability was measured in 96 hours of post-transfection by using CTG substrate. The viability of CSNK2 β silenced MDA-MB-231 cells was significantly lower as compared to Scramble siRNA ($p < 0.001$) (Figure 1F). These results suggested that CSNK2 β play a crucial role in cell proliferation of MDA-MB-231 cells. Clonogenic assay which mimics the tumor formation *in vivo* was carried out to observe the long-term survival of cells, which were transfected with CSNK2 β +/- siRNAs. Silencing of CSNK2 β significantly reduced the number of colonies as compared to Scramble siRNA transfected cells ($p < 0.001$) (Figure 1G, H). This result further confirmed the pivotal role of CSNK2 β in the proliferation of MDA-MB-231 cells.

Silencing of CSNK2 β augmented intracellular reactive oxygen species (ROS) production, caused cell cycle arrest at G2/M and induced apoptosis in MDA-MB-231 cells in vitro

ROS possesses double edge sword property both as, oncogenic- maintaining sustained and increased proliferation of cancer cells, as well as, tumor suppressor- leading to cell death when an aberrant increase in intracellular ROS arises due to any kind of stress. It is a good idea to find oxidative stress modulators as an anti-cancer strategy (Wang and Yi, 2008; Gurer-Orhan et al., 2018). In our experiment, we found the increased production of ROS in CSNK2 β siRNA transfected cells compared to scramble siRNA transfected cells (Figure 2A). This data suggested that CSNK2 β plays a crucial role in attenuating the intracellular ROS production in MDA-MB-231 cells for its sustained proliferation.

Next, we checked the status of the cell cycle phase following knockdown of CSNK2 β . After 48 hours of transfection, the percentage of cells in the different phases of the cell cycle were analyzed by flow cytometry. The percentage of cells in G2/M phase was significantly increased in CSNK2 β transfected samples (22.806 %) than in Scramble siRNA transfected samples (13.266 %) ($p < 0.01$). At the same time, the percentage of cells in G0/G1 and S phase was reduced (Figure 2 B, C). These results suggest that knockdown of cells with CSNK2 β inhibits the progression of cells via blocking the cell cycle at G2/M phase.

The significant arrest of MDA-MB-231 cells in G2/M phase led us to check the effect of CSNK2 β knockdown on cell apoptosis. We found that silencing of CSNK2 β caused change in cellular morphology and condensation of nuclei - a prominent feature of cells undergoing apoptosis (Figure 2D). Quantitative estimation of apoptotic cells was carried out using flow cytometry with annexin V-FITC and PI. Our data showed 6.77 % of apoptosis (early apoptotic + late apoptotic population) in CSNK2 β siRNA knockdown cells compared to 3.52 % (early apoptotic + late apoptotic population) in Scramble siRNA cells which comes out to be significant with $p < 0.01$ as shown in (Figure 2E, F). To unravel the cell death mechanism induced after the knockdown of CSNK2 β , western blot analysis was performed to determine the level of proteins related to apoptosis. We found an increased expression of BAX and cleaved caspase 3 along with a decreased level of Bcl-xL expression (Figure 2G). Altogether these results showed that the silencing of CSNK2 β drives cell death via apoptosis. Moreover, we also analyzed the expression of two vital autophagy markers, Beclin-1 and LC3, and found both markers were upregulated in CSNK2 β siRNA transfected samples than Scramble siRNA (Figure 2G). These findings together showed that targeting CSNK2 β triggers the cells towards both apoptosis and autophagy cell death pathway.

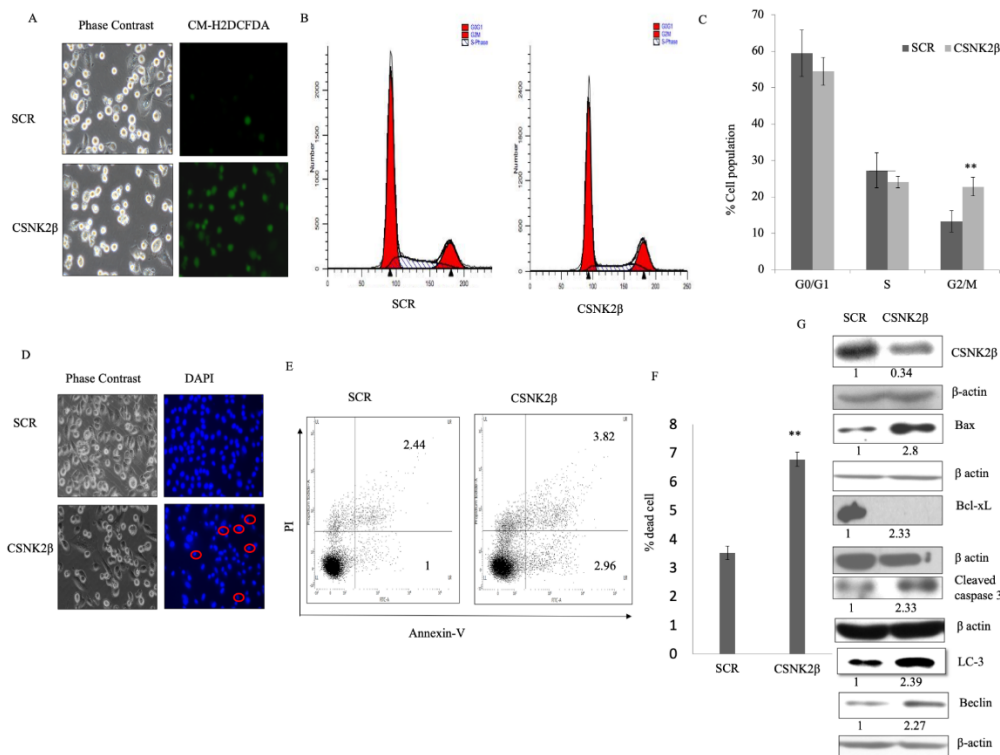


Figure 2: Silencing of CSNK2β induced apoptosis in MDA-MB-231 cells *in vitro*. (A) Representative fluorescent microscopy image of Intracellular ROS production using CM-H2DCFDA dye in Scramble and CSNK2β siRNA treated cells. (B and C) Representative images of cell cycle analysis after treating the cells with Scramble and CSNK2β siRNA for 48 hours, represented as histogram and bar graph. (D) Representative images of microscopic evaluation of cell morphology and Hoechst stained nuclei after siRNAs transfection. Condensed nuclei of apoptotic cells are circled as characterized by a smaller and fragmented appearance with respect to control. (E and F) Identification of Apoptosis with Annexin V-FITC/PI double staining by flow cytometry. Distribution of cells in different phases of apoptosis are represented as dot plot diagram in following manner. Lower left: viable cells; Lower right: early apoptotic cells; Upper left: Necrotic cells; and Upper right: late apoptotic cells. Bar graph representation shows total apoptotic cells in both siRNAs treated cells (early and late apoptosis). (G) Representative image of western blot analysis of apoptosis associated markers. Knockdown of CSNK2β inhibited Bcl-xL whereas activated Bax, caspase 3, Beclin-1 and LC-3. The values below the blot represent the densitometry of the corresponding band compared to loading control β actin. The experiments were performed in triplicates. Results for Annexin V-FITC/PI double staining are representative of two independent experiments represented as a mean ± standard deviation, where **p < 0.01.

Knockdown of CSNK2β inhibited migration and invasion of MDA-MB-231 cells

Next, we questioned whether the depletion of CSNK2β could alter the migration and invasion potential of MDA-MB-231 cells. In wound healing assay, migratory capacity was observed for each sample at different time points (0, 6, and 12 h). After 12 hours, the area of a wound was significantly wide in CSNK2β transfected wells as compared with Scramble suggesting the role of CSNK2β gene in the migration of MDA-MB-231 cells *in vitro* (p < 0.001) (Figure 3A, B). Next, we

also checked the invasive potential of MDA-MB-231 following CSNK2β knockdown by transwell invasion assay. We found that cells transfected with CSNK2β siRNA were unable to invade the matrigel layer as efficient as the Scramble siRNA transfected cells (Figure 3C, D). Some critical markers associated with cell migration were also checked by western blotting and it was found that knockdown of CSNK2β caused inhibition of MMP-9, Vimentin, β Integrin1, and β-catenin along with upregulation of E-cadherin (Figure 3E).

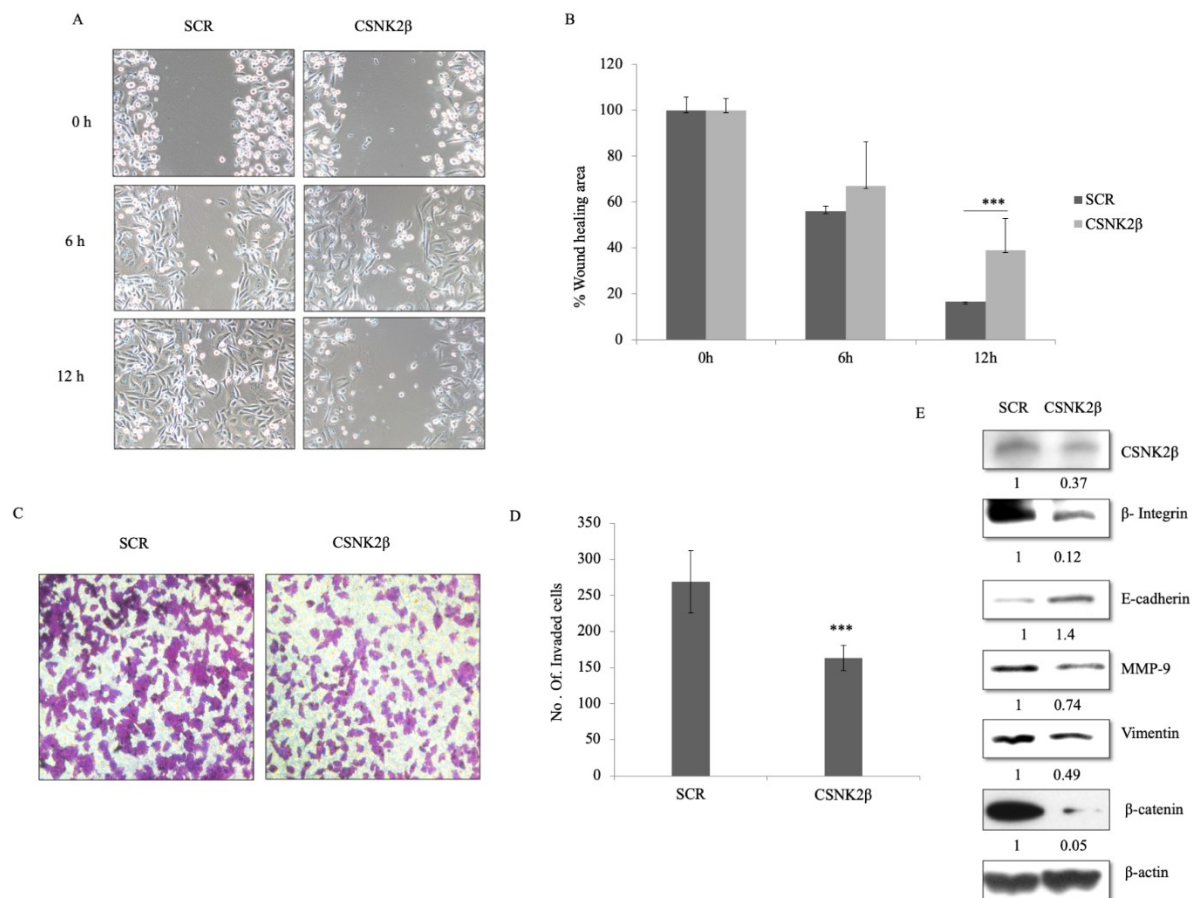


Figure 3: Silencing of CSNK2β inhibited migration and invasion of MDA-MB-231 cells. (A and B) Representative images of wound healing assay performed to evaluate the motility of cells after silencing CSNK2β. After transfection, a scratch was made on cells monolayer and was monitored with microscopy every 6 hours (0, 6, and 12 h). Bar graphs show normalized wound area, calculated using Image J software. **(C and D)** Representative images of invasion assay. Bar graphs depict number of invaded cells following knockdown of CSNK2β. Data are represented as mean \pm SD from triplicate samples, where ** $p < 0.01$ and *** $p < 0.001$. **(E)** Representative image of western blot analysis depicts protein expression of migration associated markers. Knockdown of CSNK2β upregulated E-cadherin whereas downregulated β integrin1, MMP-9, and β -catenin. The values below the blot represent the densitometry of the corresponding band compared to loading control β actin. The experiments were performed in triplicates.

Silencing of CSNK2β modulated key markers associated with cell proliferation, migration, and cell stemness

To elucidate the role of CSNK2β in MDA-MB-231 cell proliferation, survival, and apoptosis, we examined the expression of some selected genes related to these phenomena at mRNA and protein level by real time PCR and western blotting respectively. Knockdown of CSNK2β led to downregulation of PCNA, E2F1, c-Myc, NF- κ B, p-ERK, and p-38 α protein level, as shown in (Figure 4A). In 72 hours transfected samples, we

found that the mRNA level of p21, a cell cycle inhibitor, was increased up to about 2.7 fold, while the expressions of survivin (anti-apoptotic and metastatic marker), Nanog, SLUG, OCT4, SOX2 (transcription factor for stemness) and cyclin E1, Cyclin A1, cyclin B1 (cell cycle cyclins) and E2F1, mTOR, PCNA proliferative marker gene expression were decreased following the knockdown of CSNK2β (Figure 4B). These results showed the critical role of CSNK2β in the expression of genes associated with cell cycle, cancer stemness, and metastasis.

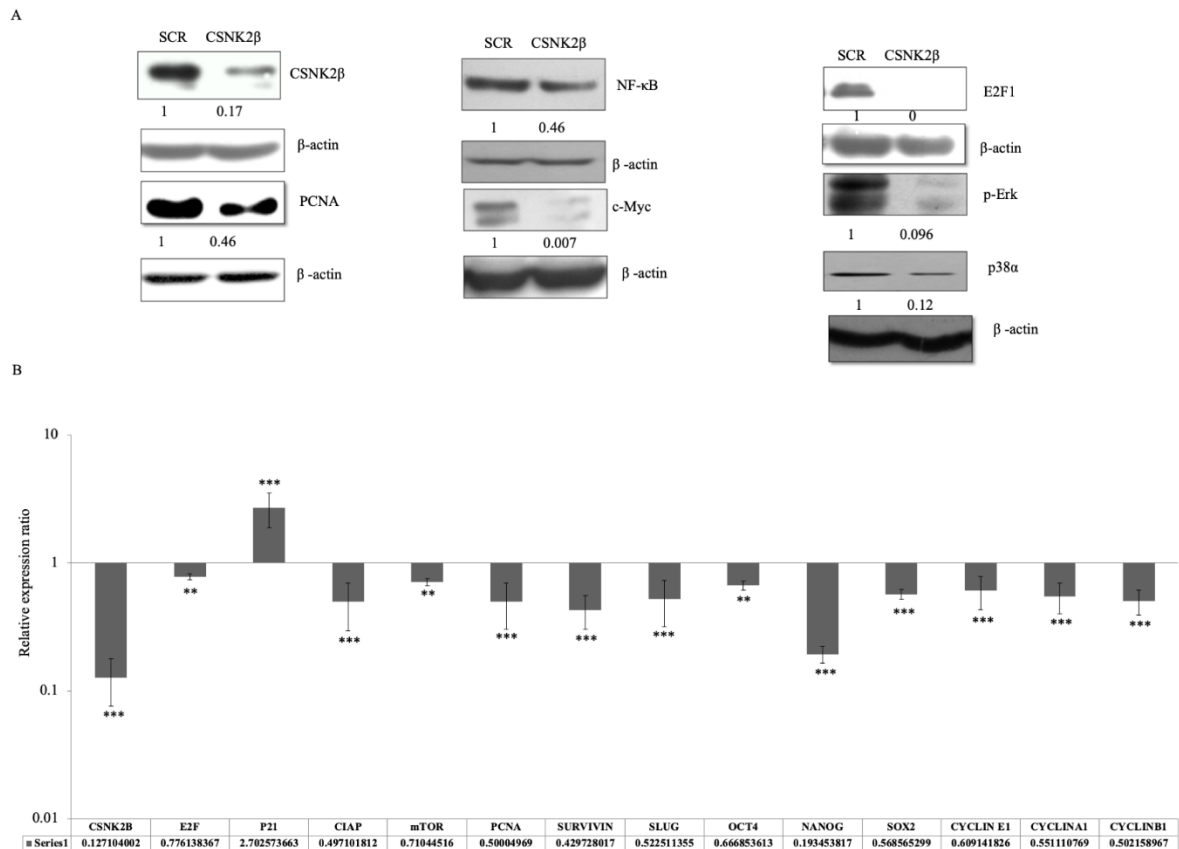


Figure 4: Silencing of CSNK2β modulated key markers associated with cell proliferation, migration, and cell stemness. (A) Representative image of the western blot analysis of proteins associated with cell proliferation. The values below the blot represent the densitometry of the corresponding band compared to loading control β actin. The experiments were performed in triplicates. **(B)** qPCR analysis of genes associated with apoptosis, cell cycle, cell stemness, and metastasis. Data are represented as mean ± SD from triplicate samples, where **p < 0.01 and ***p < 0.001.

DISCUSSION

Breast cancer is the most commonly diagnosed as well as the leading cause of cancer deaths in women (Bray et al., 2018). Mortality due to breast cancer has been decreasing due to early diagnosis, improved adjuvant therapy, and low usage of hormone replacement therapy (Ravdin et al., 2007). In our study, we chose to elucidate the role of CSNK2β in breast cancer (MDA-MB-231, a TNBC cell line) *in vitro*.

CSNK2 is a serine/threonine kinase that exists in a heterotetrameric complex consisting of two catalytic (α and/or α') and two regulatory (2β) subunits. CSNK2β exists and functions either in a complex or independent population in cell. Here we report the independent function of CSNK2β in MDA-MB-

231 cells. Our results showed that knockdown of CSNK2β significantly decreased the cell viability and colony growth of MDA-MB-231 cells. Based on these observations, we next evaluated the status of intracellular reactive oxygen species (ROS) inside the MDA-MB-231 cells, since the controlled production of ROS is beneficial for proliferation and viability of cancer cells but a disproportional increase of ROS can induce cell cycle arrest and at its peak can induce apoptosis of cancer cells (Gurer-Orhan et al., 2018; Liou and Storz, 2010). In our study, we found that knockdown of CSNK2β markedly induced ROS production which seems to be consistent with earlier finding that use of a pharmacological inhibitor which blocks the catalytic activity of CSNK2 induced apoptosis in leukemic cell

lines via up-regulation of intracellular H₂O₂ (Hanif et al., 2009). Moreover, we found the G2M cell cycle arrest of MDA-MB-231 cells following knockdown of CSNK2 β , and in some studies, it has been shown that ROS accumulation is at its peak in the G2M phase of cell cycle (Havens et al., 2006). So the accumulated ROS found in this study can be attributed to arrest of cells at G2/M phase following knockdown of CSNK2 β . However, the exact mechanism which triggered redox modulation upon knockdown of CSNK2 β was not explored in this study and further investigation is needed to understand the association of CSNK2 β and the ROS status inside MDA-MB-231 cancer cells.

A perturbed cell cycle progression may lead to apoptosis (Pucci et al., 2000). In our study, we found siRNA knockdown of CSNK2 β in MDA-MB-231 led to nuclear condensation and change of cellular morphology, a characteristic of cell undergoing apoptosis. Further, this study also showed that depletion of CSNK2 β modulated molecular markers associated with apoptosis and autophagy, which is consistent with earlier reports of involvement of CSNK2 in suppressing apoptosis, as overexpression of CSNK2 in prostate cancer cells prior to treatment with etoposide rescued against cell death (Guo et al., 2001) and downregulation of CSNK2 (α subunit) leads to autophagic cell death in glioblastoma cell lines (Olsen et al., 2012). These results suggest that CSNK2 β has a prominent role in the survival of MDA-MB-231 cells by suppressing the apoptotic and autophagy machinery.

In this study, we also explored the role of CSNK2 β in metastasis and invasion, as these two important phenotypes are associated with breast cancer. Metastasis, which is evident from stage 2 onwards and nearly 30 % of women develop metastasis even after initial diagnosis (O'Shaughnessy, 2005), requires identification of markers involved in this lethal property of cancer. In the present study, we found that silencing of CSNK2 β markedly up-regulated E-cadherin that hinders invasiveness in carcinomas and other cancers

(Singhai et al., 2011). In search of other markers associated with migration and hence metastasis, being affected following inhibition of CSNK2 β , we found down-regulation of β 1 Integrin, MMP-9, Vimentin, and β -catenin. β 1 Integrin was found to be inhibited in CSNK2 β knockdown cells, which is a majorly expressed integrin and has been reported to actively be involved in metastasis and has attracted considerable attention as a target for immunotherapy in breast cancer (Park et al., 2008). MMP-9, a protease, facilitates cancer cells in degrading extracellular matrix for metastasis and invasion, has been found to be overexpressed in many cancers, including breast cancer. We found MMP-9 to be inhibited following knockdown of CSNK2 β , which corroborates with the previous finding of MMP-9 inhibition with chemically inhibited CSNK2 in lung adenocarcinoma cells (Kim and Kim, 2013). Vimentin, a major factor associated with epithelial-mesenchymal transition (EMT) (Satelli and Li, 2011) and a vital prognostic biomarker and therapeutic target correlated with EMT in TNBC (Yamashita et al., 2013) was found to be downregulated in CSNK2 β knockdown cell. In addition to these, we also found that knockdown of CSNK2 β downregulated the expression of β -catenin. It has been previously shown that β -catenin plays a pivotal role in tumor-related phenotypes, including migration and stemness, in particular in TNBC cells (Xu et al., 2015). Collectively, these results showed that CSNK2 β mediates migration and invasion of MDA-MB-231 cells, and these critical markers appear to be acting downstream of CSNK2 β .

To get further insight into the biological significance of CSNK2 β in the pathogenesis of breast cancer, we performed the expression study of the key molecules related to cell proliferation, survival, cell cycle, apoptosis, and autophagy-related genes by western blotting and real time PCR.

Raf/MEK/ERK pathways are activated in many tumors (prostate, breast, leukemia, melanoma, thyroid), which transmit the signals from cell surface receptors to transcription

factors and can be exploited for therapeutic intervention (McCubrey et al., 2007). Here, we found that CSNK2 β regulates the expression of p-ERK, p38- α , c-Myc proteins, which are connected to the MAPK pathway in MDA-MB-231 cells. These data suggested that targeting CSNK2 β might be a potential strategy to improve clinical outcomes in the future. PCNA has been earlier reported as a reliable marker to assess the growth and predicting the prognosis in breast cancer (Schönborn et al., 1994). Thus, we investigated the effect of silencing of CSNK2 β on PCNA and found its downregulation at both transcript and protein levels. A recent study on the interbreeding of MMTV-PyMT mice with E2F1, E2F2, or E2F3 knockout mice showed that in addition to cell cycle control E2F targets a number of genes related to angiogenesis, extracellular matrix modification, proliferation and survival of tumor cells which was important for metastasis (Hollern et al., 2014). We also found that CSNK2 β reduces the expression of E2F1, which might affect a large fraction of genes in breast cancer. NF- κ B expression leads to the induction of genes related to apoptosis, cell cycle, cell invasion which contributes to tumorigenesis, chemoresistance, and radioresistance (Greten and Karin, 2004). Our result showed that CSNK2 β might regulate the cell proliferation through the NF- κ B pathway.

One of the most striking results obtained in this study following silencing of CSNK2 β was a highly significant upregulation of p21 at the transcript level. p21 is well known as sensor and effector of multiple growth inhibiting signals and its overexpression has been reported to cause arrest in breast carcinoma cell lines (Sheikh et al., 1995). This result is in a similar line of an earlier report where inhibition of CSNK2 using inhibitor caused upregulation of p21 in glioblastoma cells and induced G2M arrest of cell cycle (Dixit et al., 2012). Knockdown of CSNK2 β also led to the downregulation of mTOR. Alteration in mTOR pathway is a common anomaly in various breast cancer subtypes (Costa et al.,

2018). We also checked the expression of survivin and cIAP as both are inhibitors of apoptosis and overexpressed in the majority of breast cancer; moreover, survivin has been found to confer resistance to chemotherapy (Jha et al., 2012). In this study, we also found that expressions of slug, oct4, nanog and sox2 were significantly downregulated at transcript level. Slug overexpression has been reported to induce stemness and promote migration in hepatocellular carcinoma, breast and other cancer types (Sun et al., 2014; Ferrari-Amorotti et al., 2014), and its overexpression is associated with reduced expression of E-cadherin in lymph node metastasis and poor survival of patients (Shioiri et al., 2006). Interestingly, we found that knockdown of CSNK2 β led to downregulation of slug and upregulation of E-cadherin. Sox2, a transcription factor, plays an important role in the pluripotency of stem cells. Downregulation of Sox2 is a promising outcome of this study as Sox2 has been reported to positively influence cell proliferation and migration of TNBC cells (Liu et al., 2018). Downregulation of oct-4 and nanog is another crucial finding of this study since both of the pluripotency factors are highly expressed in multiple cancers (Ezeh et al., 2005; Chiou et al., 2010) including various subtypes of breast cancer and their abrogation reverses epithelial-mesenchymal transition in lung carcinoma (Chiou et al., 2010). Although this is a very initial finding for the relationship between CSNK2 β and mentioned stemness marker, a further study is needed to explore the signal relationship among them.

We also explored the expression level of cyclins (A1, B1, and E1) at the transcript level, following knockdown of CSNK2 β . These cyclins have been shown to be associated with breast cancer progression, via modulating different cellular pathways such as by modulating VEGF and hence angiogenesis (Khaja et al., 2013) and poor survival of patients (Aaltonen et al., 2009; Keyomarsi et al., 2002).

In conclusion, the present study explored the independent function of β subunit of

CSNK2 in breast cancer pathogenesis in MDA-MB-231 cells. Our study has shown that silencing of CSNK2 β significantly inhibited the growth of MDA-MB-231 cells, caused cell cycle arrest, and induced apoptosis. Further, this study also found that CSNK2 β knockdown significantly hampered migration and invasion of MDA-MB-231 cells via downregulation of MMP-9, vimentin, beta-integrin 1, and up-regulation of E-cadherin. Our study has paved the way for further investigation to establish the role of β subunit in different cancers and diseases.

Authors' contribution

Shibendra Kumar Lal Karna (SKLK) executed most of the experiments and wrote the manuscript, Bilal Ahmad Lone (BAL), performed some experiments and manuscript writing, Faiz Ahmad (FA) contributed some experiments and manuscript writing, Nerina Shahi (NS) performed part of the experiments, Yuba Raj Pokharel (YRP) designed, supervised and edited the manuscript.

Conflict of interest

The authors declare that they have no competing interests.

Funding

SAU-START-UP-GRANT-2014, South Asian University, New Delhi, India. Funding sources had no role in the design of the study, analysis of data, and writing the manuscript.

REFERENCES

Aaltonen K, Amini RM, Heikkilä P, Aittomäki K, Tamminen A, Nevanlinna H, et al. High cyclin B1 expression is associated with poor survival in breast cancer. *Br J Cancer*. 2009;100:1055-60.

Ahmed K, Gerber DA, Cochet C. Joining the cell survival squad: An emerging role for protein kinase CK2. *Trends Cell Biol*. 2002;12:226-30.

Appel K, Wagner P, Boldyreff B, Issinger OG, Montenarh M. Mapping of the interaction sites of the growth suppressor protein p53 with the regulatory beta-subunit of protein kinase CK2. *Oncogene*. 1995; 11:1971-8.

Bray F, Ferlay J, Soerjomataram I, Siegel RL, Torre LA, Jemal A. Global cancer statistics 2018: GLOBOCAN estimates of incidence and mortality worldwide for 36 cancers in 185 countries. *CA Cancer J Clin*. 2018;68:394-424.

Cerami E, Gao J, Dogrusoz U, Gross BE, Sumer SO, Aksoy BA, et al. The cBio cancer genomics portal: An open platform for exploring multidimensional cancer genomics data. *Cancer Discov*. 2012;2:401-4.

Chen Y, Wu YR, Yang HY, Li XZ, Jie MM, Hu CJ, et al. Prolyl isomerase Pin1: A promoter of cancer and a target for therapy. *Cell Death Dis*. 2018;9:1-7.

Chiou SH, Wang ML, Chou YT, Chen CJ, Hong CF, Hsieh WJ, et al. Coexpression of Oct4 and Nanog enhances malignancy in lung adenocarcinoma by inducing cancer stem cell-like properties and epithelial-mesenchymal transdifferentiation. *Cancer Res*. 2010;70:10433-44.

Costa RL, Han HS, Gradishar WJ. Targeting the PI3K/AKT/mTOR pathway in triple-negative breast cancer: a review. *Breast Cancer Res Treat*. 2018;169: 397-406.

Daya-Makin M, Sanghera JS, Mogentale TL, Lipp M, Parchomchuk J, Hogg JC, et al. Activation of a tumor-associated protein kinase (p40TAK) and casein kinase 2 in human squamous cell carcinomas and adenocarcinomas of the lung. *Cancer Res*. 1994;54:2262-8.

Dixit D, Sharma V, Ghosh S, Mehta VS, Sen E. Inhibition of Casein kinase-2 induces p53-dependent cell cycle arrest and sensitizes glioblastoma cells to tumor necrosis factor (TNF α)-induced apoptosis through SIRT1 inhibition. *Cell Death Dis*. 2012;3:271.

Ezeh UI, Turek PJ, Reijo RA, Clark AT. Human embryonic stem cell genes OCT4, NANOG, STELLAR, and GDF3 are expressed in both seminoma and breast carcinoma. *Cancer*. 2005;104:2255-65.

Faust RA, Gapany M, Tristani P, Davis A, Adams GL, Ahmed K. Elevated protein kinase CK2 activity in chromatin of head and neck tumors: Association with malignant transformation. *Cancer Lett*. 1996;10:31-5.

Ferrari-Amorotti G, Chiodoni C, Shen F, Cattelani S, Soliera AR, Manzotti G, et al. Suppression of invasion and metastasis of triple-negative breast cancer lines by pharmacological or genetic inhibition of slug activity. *Neoplasia*. 2014;16:1047-58.

Filhol O, Baudier J, Delphin C, Loue-Mackebach P, Chambaz EM, Cochet C. Casein kinase II and the tumor suppressor protein P53 associate in a molecular complex that is negatively regulated upon P53 phosphorylation. *J Biol Chem*. 1992;267:20577-83.

- Greten FR, Karin M. The IKK/NF- κ B activation pathway - a target for prevention and treatment of cancer. *Cancer Lett.* 2004;206:193-9.
- Guerra B, Issinger OG. Protein kinase CK2 and its role in cellular proliferation, development and pathology. *Electrophoresis.* 1999;20:391-408.
- Guerra B, Siemer S, Boldyreff B, Issinger O-G. Protein kinase CK2: Evidence for a protein kinase CK2beta subunit fraction, devoid of the catalytic CK2alpha subunit, in mouse brain and testicles. *FEBS Lett.* 1999; 462:353-7.
- Guo C, Yu S, Davis AT, Wang H, Green JE, Ahmed K. A potential role of nuclear matrix-associated protein kinase CK2 in protection against drug-induced apoptosis in Cancer cells. *J Biol Chem.* 2001;276: 5992-9.
- Gurer-Orhan H, Ince E, Konyar D, Saso L, Suzen S. The role of oxidative stress modulators in breast cancer. *Curr Med Chem.* 2018;25:4084-101.
- Györfy B, Lanczky A, Eklund AC, Denkert C, Budczies J, Li Q, et al. An online survival analysis tool to rapidly assess the effect of 22,277 genes on breast cancer prognosis using microarray data of 1,809 patients. *Breast Cancer Res Treat.* 2010;123:725-31.
- Hanif IM, Ahmad KA, Ahmed K, Pervaiz S. Involvement of reactive oxygen species in apoptosis induced by pharmacological inhibition of protein kinase CK2. *Ann N Y Acad Sci.* 2009;1171:591.
- Havens CG, Ho A, Yoshioka N, Dowdy SF. Regulation of late G1/S phase transition and APCdh1 by reactive oxygen species. *Mol Cell Biol.* 2006;26: 4701-11.
- Hollern DP, Honeysett J, Cardiff RD, Andrechek ER. The E2F transcription factors regulate tumor development and metastasis in a mouse model of metastatic breast cancer. *Mol Cell Biol.* 2014 ;34:3229-43.
- Jensen HH, Hjerrild M, Guerra B, Larsen MR, Højrup P, Boldyreff B. Phosphorylation of the Fas associated factor FAF1 by protein kinase CK2 and identification of serines 289 and 291 as the in vitro phosphorylation sites. *Int J Biochem Cell Biol.* 2001;33:577-89.
- Jha K, Shukla M, Pandey M. Survivin expression and targeting in breast cancer. *Surg Oncol.* 2012;21:125-31.
- Keyomarsi K, Tucker SL, Buchholz TA, Callister M, Ding YE, Hortobagyi GN, et al. Cyclin E and survival in patients with breast cancer. *N Engl J Med.* 2002; 347:1566-75.
- Khaja AS, Dizayi N, Kopparapu PK, Anagnostaki L, Härkönen P, Persson JL. Cyclin A1 modulates the expression of vascular endothelial growth factor and promotes hormone-dependent growth and angiogenesis of breast cancer. *PLoS One.* 2013;8(8):e72210.
- Kim J, Kim SH. CK2 inhibitor CX-4945 blocks TGF- β 1-induced epithelial-to-mesenchymal transition in A549 human lung adenocarcinoma cells. *PLoS One.* 2013;8(9):e74342.
- Krek W, Maridor G, Nigg EA. Casein kinase II is a predominantly nuclear enzyme. *J Cell Biol.* 1992;116: 43-55.
- Landesman-Bollag E, Romieu-Mourez R, Song DH, Sonenshein GE, Cardiff RD, Seldin DC. Protein kinase CK2 in mammary gland tumorigenesis. *Oncogene.* 2001;20:3247-57.
- Li D, Meier UT, Dobrowolska G, Krebs EG. Specific interaction between casein kinase 2 and the nucleolar protein Nopp140. *J Biol Chem.* 1997;272:3773-9.
- Li D, Dobrowolska G, Aicher LD, Chen M, Wright JH, Drueckes P, et al. Expression of the casein kinase 2 subunits in Chinese hamster ovary and 3T3 L1 cells provides information on the role of the enzyme in cell proliferation and the cell cycle. *J Biol Chem.* 1999;274: 32988-96.
- Liou GY, Storz P. Reactive oxygen species in cancer. *Free Radic Res.* 2010;44:479-96.
- Litchfield DW. Protein kinase CK2: structure, regulation and role in cellular decisions of life and death. *Biochem J.* 2003;369:1-5.
- Liu P, Tang H, Song C, Wang J, Chen B, Huang X, et al. SOX2 promotes cell proliferation and metastasis in triple negative breast cancer. *Front Pharmacol.* 2018;9: 942.
- McCubrey JA, Steelman LS, Chappell WH, Abrams SL, Wong EW, Chang F, et al. Roles of the Raf/MEK/ERK pathway in cell growth, malignant transformation and drug resistance. *Biochim Biophys Acta.* 2007; 1773:1263-84.
- Messenger MM, Saulnier RB, Gilchrist AD, Diamond P, Gorbisky GJ, Litchfield DW. Interactions between protein kinase CK2 and Pin1 Evidence for phosphorylation-dependent interactions. *J Biol Chem.* 2002; 277:23054-64.
- O'Shaughnessy J. Extending survival with chemotherapy in metastatic breast cancer. *Oncologist.* 2005;10:20-9.

- Olsen BB, Svenstrup TH, Guerra B. Downregulation of protein kinase CK2 induces autophagic cell death through modulation of the mTOR and MAPK signaling pathways in human glioblastoma cells. *Int J Oncol.* 2012;41:1967-76.
- Park CC, Zhang HJ, Yao ES, Park CJ, Bissell MJ. β 1 integrin inhibition dramatically enhances radiotherapy efficacy in human breast cancer xenografts. *Cancer Res.* 2008;68:4398-405.
- Pokharel YR, Saarela J, Szwajda A, Rupp C, Rokka A, Karna SK et al. Relevance Rank Platform (RRP) for functional filtering of high content protein–protein interaction data. *Mol Cell Proteomics.* 2015;14:3274-83.
- Pucci B, Kasten M, Giordano A. Cell cycle and apoptosis. *Neoplasia.* 2000;2:291-9.
- Ravdin PM, Cronin KA, Howlander N, Berg CD, Chlebowski RT, Feuer EJ, et al. The decrease in breast cancer incidence in 2003 in the United States. *N Engl J Med.* 2007;356:1670-4.
- Satelli A, Li S. Vimentin in cancer and its potential as a molecular target for cancer therapy. *Cell Mol Life Sci.* 2011;68:3033-46.
- Schönborn I, Minguillon C, Möhner M, Ebeling K. PCNA as a potential prognostic marker in breast cancer. *Breast J.* 1994;3:97-102.
- Shaul YD, Yuan B, Thiru P, Nutter-Upham A, McCallum S, Lanzkron C et al. MERAV: a tool for comparing gene expression across human tissues and cell types. *Nucleic Acids Res.* 2016;44:D560-6.
- Sheikh MS, Rochefort H, Garcia M. Overexpression of p21WAF1/CIP1 induces growth arrest, giant cell formation and apoptosis in human breast carcinoma cell lines. *Oncogene.* 1995;11:1899-905.
- Shioiri M, Shida T, Koda K, Oda K, Seike K, Nishimura M, et al. Slug expression is an independent prognostic parameter for poor survival in colorectal carcinoma patients. *Br J Cancer.* 2006;94:1816-22.
- Singhai R, Patil VW, Jaiswal SR, Patil SD, Tayade MB, Patil AV. E-Cadherin as a diagnostic biomarker in breast cancer. *N Am J Med Sci.* 2011;3:227.
- Stalter G, Siemer S, Becht E, Ziegler M, Remberger K, Issinger OG. Asymmetric expression of protein kinase CK2 subunits in human kidney tumors. *Biochem Biophys Res Commun.* 1994;202:141-7.
- Sun Y, Song GD, Sun N, Chen JQ, Yang SS. Slug overexpression induces stemness and promotes hepatocellular carcinoma cell invasion and metastasis. *Oncology.* 2014;7:1936-40.
- Tang Z, Li C, Kang B, Gao G, Li C, Zhang Z. GEPIA: a web server for cancer and normal gene expression profiling and interactive analyses. *Nucleic Acids Res.* 2017;45:W98-102.
- Wang J, Yi J. Cancer cell killing via ROS: to increase or decrease, that is the question. *Cancer Biol Ther.* 2008;7:1875–84.
- Wang W, Wang X, Li C, Chen T, Zhang N, Liang Y, et al. Huaier suppresses breast cancer progression via linc00339/miR-4656/CSNK2B signaling pathway. *Front Oncol.* 2019;9:1195.
- Xu J, Prospero JR, Choudhury N, Olopade OI, Goss KH. β -Catenin is required for the tumorigenic behavior of triple-negative breast cancer cells. *PLoS One.* 2015; 10:e0117097.
- Yamashita N, Tokunaga E, Kitao H, Hisamatsu Y, Taketani K, Akiyoshi S, et al. Vimentin as a poor prognostic factor for triple-negative breast cancer. *J Cancer Res Clin Oncol.* 2013;13:739-46.
- Yenice S, Davis AT, Goueli SA, Akdas A, Limas C, Ahmed K. Nuclear casein kinase 2 (CK-2) activity in human normal, benign hyperplastic, and cancerous prostate. *Prostate.* 1994;24:11-6.
- Zhou F, Xu J, Ding G, Cao L. Overexpressions of CK2 β and XIAP are associated with poor prognosis of patients with cholangiocarcinoma. *Pathol Oncol Res.* 2014;20:73-9.