



Spatial genetic structure in *Pinus cembroides* Zucc. at population and landscape levels in central and northern Mexico

Luis C. García-Zubia¹, Javier Hernández-Velasco¹, José C. Hernández-Díaz¹, Sergio L. Simental-Rodríguez¹, Carlos A. López-Sánchez², Carmen Z. Quiñones-Pérez³, Artemio Carrillo-Parra¹ and Christian Wehenkel¹

¹Instituto de Silvicultura e Industria de la Madera, Universidad Juárez del Estado de Durango, Durango, México

²Department of Biology of Organisms and Systems, Mieres Polytechnic School, University of Oviedo, Campus Universitario de Mieres, C/Gonzalo Gutiérrez Quirós S/N, Mieres, Spain

³Tecnológico Nacional de México, Campus Valle del Guadiana, Villa Montemorelos, Durango, México

ABSTRACT

Background. Spatial genetic structure (SGS) analysis is a powerful approach to quantifying gene flow between trees, thus clarifying the functional connectivity of trees at population and landscape scales. The findings of SGS analysis may be useful for conservation and management of natural populations and plantations. *Pinus cembroides* is a widely distributed tree species, covering an area of about 2.5 million hectares in Mexico. The aim of this study was to examine five natural seed stands of *P. cembroides* in the Sierra Madre Occidental to determine the SGS at population (within the seed stand) and landscape (among seed stands) levels in order to establish guidelines for the conservation and management of the species. We hypothesized that *P. cembroides*, in which the seeds are dispersed by birds and mammals, creates weaker SGS than species with wind-dispersed seeds.

Methods. DNA fingerprinting was performed using the amplified fragment length polymorphism (AFLP) technique. In order to estimate the SGS at population and landscape levels, we measured the geographical (spatial) distance as the Euclidean distance. We also estimated the genetic distances between individuals using the pairwise kinship coefficient.

Results. The results showed non-significant autocorrelation in four out of five seed stands studied (i.e., a mainly random distribution in the space of the genetic variants of *P. cembroides* at population level).

Discussion. SGS was detected at the landscape scale, supporting the theory of isolation by distance as a consequence of restricted pollen and seed dispersal. However, the SGS may also have been generated by our sampling strategy. We recommended establishing a close network of seed stands of *P. cembroides* to prevent greater loss of local genetic variants and alteration of SGS. We recommend seed stands of *P. cembroides* of a minimum width of 225 m.

Submitted 17 July 2019
Accepted 7 October 2019
Published 6 November 2019

Corresponding author
Christian Wehenkel,
wehenkel@ujed.mx

Academic editor
Robert Winkler

Additional Information and
Declarations can be found on
page 14

DOI 10.7717/peerj.8002

© Copyright
2019 García-Zubia et al.

Distributed under
Creative Commons CC-BY 4.0

OPEN ACCESS

Subjects Agricultural Science, Genetics

Keywords Gene flow, Seed stands, Sierra Madre Occidental, Isolation by distance

INTRODUCTION

Gene flow mediated by exchange of pollen and seed within and among tree populations is necessary to maintain the long-term viability of forest species. Gene flow can stabilize local genetic variation and spread potentially adaptive genes (*Van Dyck & Baguette, 2005*). However, spatially limited gene flow can generate spatial genetic structure (SGS), i.e., the non-random geographical distribution of genetic variation caused by isolation by distance gene dispersal (*Wright, 1938*). Tree species with wind-dispersed seeds and that occur at low densities tend to generate stronger SGS in their seedlings than species with animal-dispersed seeds or that occur at high densities (*Hamrick, Murawski & Nason, 1993*). Moreover, limited seed dispersal that leads to neighbors being closely related also impacts demographic and reproductive processes (*Hamrick, Murawski & Nason, 1993*).

SGS analysis is a powerful approach to quantifying gene flow between trees (*Segelbacher et al., 2010*), thus clarifying the functional connectivity of trees at population and landscape scale (*Van Dyck & Baguette, 2005*). SGS can also be affected by mating systems, historical events and ecological and other evolutionary forces (such as selection and genetic drift), and it is therefore a crucial aspect of plant evolutionary processes and population dynamics (*Epperson, 2003; Rousset, 2004; Vekemans & Hardy, 2004*). The findings of SGS analysis may be useful for conservation and management of natural populations and plantations (*McCue, Buckler & Holtsford, 1996*).

The pattern of SGS revealed by autocorrelation analysis is greatly affected by the distance class width, sampling intensity and the total area sampled (*Epperson & Li, 1996; Peakall, Ruibal & Lindenmayer, 2003; Double et al., 2005*). Strong autocorrelation may occur when the spatial scale of sampling is smaller than the scale of the SGS (*Cavers et al., 2005*). In order to reduce bias due to the distribution, sampling along a fine mesh of transects in multiple dimensions and stratified sampling is recommended, thus combining high-density local sampling with a broader sampling coverage (*Vekemans & Hardy, 2004*). Overall, the line-transect scheme seems to perform slightly better than the simple-random scheme in parameter estimation and to be more efficient for encompassing broad spatial scales (*Zeng et al., 2010*).

SGS is also often associated with substantial stochastic variation due to genetic drift and a limited number of polymorphic genetic markers. Thus, gene markers such as allozymes, which provide few loci, are not adequate (*Slatkin & Arter, 1991*). Highly polymorphic markers (e.g., microsatellites) or markers facilitating many loci (e.g., amplified fragment length polymorphism [AFLP] markers) are therefore preferred in SGS analysis (*Vekemans & Hardy, 2004*). The advantage of using AFLP markers is that they are produced randomly throughout the whole genome and are highly reproducible and more sensitive than other markers for characterizing SGS (e.g., *Leinemann et al., 2013; Leinemann et al., 2014*). Moreover, AFLP markers are more precise (lower standard deviation) when the inbreeding coefficient is estimated independently (*Mueller & Wolfenbarger, 1999; Hardy, 2003*).

Pinus cembroides Zucc. (1832) is one of eleven to fourteen taxa known as pinyon pines and belonging to the subsection *Cembroides*, section *Parrya*, subgenus *Ducampopinus* (*Gernandt, Liston & Piñero, 2003*). The monoecious *P. cembroides* is widely distributed,

Table 1 Location of the five seed stands in the Sierra Madre Occidental in the states of Chihuahua and Durango, Mexico.

Code	Forest stand	N	MD (m)	Stand size (ha)	Forest property, Municipality	Latitude (N)	Longitude (W)	Elevation (m)
PC-MA	Mesa Azul	34	77	14.7	Bilaguchi, Guerrero	28°19'5.04"	107°39'43.57"	2,218
PC-BQ	Baquiriachi	34	81	25.7	Baquiriachi, Balleza	26°57'0.20"	106°38'43.41"	2,369
PC-MM	Mesa de la Majada	35	72	28.9	Ciénega Prieta, Guanaceví	26°15'8.60"	106°4'12.41"	2,631
PC-CT	Cordón del Toro	35	54	8.6	El Toro y Anexos, Guanaceví	26°19'20.27"	105°5'3.14"	2,499
PC-AD	Los Adobe	35	66	8.7	Garame de Abajo, Santiago Papasquiaro	24°58'22.79"	105°32'41.20"	2,331

Notes.

N, sample size; MD, mean distance to the next tree.

Data from [Wehenkel et al. \(2015\)](#).

covering an area of 2.5 million hectares in Mexico ([CONAFOR, 2009](#)). The largest populations are found in the states of Chihuahua, Coahuila, Durango, Nuevo León, Hidalgo and Zacatecas. Individual specimens of *P. cembroides* often grow in mildly acidic soils (mean pH 5.3, with H + representing on average 25% of the total exchangeable cations), under a warm xerophytic temperate climate ([Wehenkel et al., 2015](#)), almost always occupying transition zones between desert vegetation in arid climates and the more humid mountain forests ([Rzedowski, 1978](#)). The International Union for Conservation of Nature (IUCN) Red List guidelines indicate “minor concern” regarding the status of *P. cembroides* ([IUCN, 2015](#)). *Pinus cembroides*, which is also well-known for producing nutritious, cholesterol-free nuts ([López-Mata, 2001](#); [Luna-cavazos, Romero-Manzanares & García-Moya, 2008](#); [Amr & Abeer, 2011](#)), is suitable for reforesting arid, semi-arid and eroded areas.

Although phylogenetic analysis has been conducted (e.g., [Flores-Rentería et al., 2013](#)), to the best of our knowledge, only one study has investigated the SGS within and among *P. cembroides* stands (three) in the state of Durango, Mexico ([Hernández-Velasco et al., 2017](#)). These authors did not find any evidence of significant SGS at the local scale, suggesting that the genetic variants of these species are almost always randomly distributed in space, probably due to high wind pollination and seed dispersal by animals ([Vekemans & Hardy, 2004](#)). The significant level of SGS observed at a larger scale, however, may be the result of isolation by distance gene dispersal between populations.

The aim of this study was to examine five *P. cembroides* seed stands in the Sierra Madre Occidental, to determine the SGS at population (within each seed stand) and landscape (among seed stands) levels ([Table 1](#)) in order to establish guidelines for the conservation and management of this species. We hypothesized that *P. cembroides*, in which the seeds are usually dispersed by birds and mammals ([Hubbard & McPherson, 1997](#); [Richardson, 2000](#)), creates weaker SGS than pine species with wind-dispersed seeds ([Hamrick, Murawski & Nason, 1993](#)).

MATERIALS & METHODS

Study area

The following five *P. cembroides* seed stands were sampled: Mesa Azul (PC-MA) and Baquiriachi (PC-BQ) in the state of Chihuahua, and Mesa de la Majada (PC-MM), Los Adobe (PC-AD) and Cordón del Toro (PC-CT) in the state of Durango (Table 1; Fig. 1). The seed stands were established according to the current Mexican norm for forest germplasm (NMX-AA-SC-169-2016; [Hernández-Velasco et al., 2017](#)). The five seed stands were growing on slightly acidic soil. The elevation ranges between 2,218 and 2,631 m above sea level in the study area, with annual rainfall between 498 and 514 mm. The mean temperature varies between about 11.0 and 13.1 °C (Table 2). The size of the seed stands ranged from 4.2 to 13.8 hectares. The mean distance to the next sampled tree varies from 54 to 81 m, depending on the stand considered (Table 1). Needles were collected from 34–35 randomly chosen trees in each stand. These sample trees, which were adult, dominant and occurred in the older age group, were a part of 130 previously selected adult phenotypes (trees) in each stand and were superior in terms of dimension, and pest-resistance, relative to the average tree in the same seed stands (for information about selection criteria of plus trees, see NMX-AA-SC-169-2016 and ([Hernández-Velasco et al., 2017](#))).

Extraction of DNA and genetic markers

DNA fingerprinting was performed using the amplified fragment length polymorphism (AFLP) technique, according to the protocol described by [Vos et al. \(1995\)](#) and modified by [Ávila Flores et al. \(2016\)](#). The DNA was extracted from the needles using the commercial DNeasy 96 plant kit (QIAGEN) and digested simultaneously with the restriction enzymes EcoRI and MseI. The primer combination E01/M03 (EcoRI-A/MseI-G) was used in the pre-AFLP amplification and the primer pair E35 (fluorescently-labelled with FAM) and M63+C (MseI-GAAC) in the selective amplification step.

All PCR reactions were conducted in a Peltier thermocycler (PTC–200 Version 4.0, MJ Research). The amplified restriction products were electrophoretically resolved in a genetic analyzer (ABI 3100) together with the GeneScan500 ROX (fluorescent dye ROX), and the size of the AFLP fragments was determined with GeneScan 3.7.1 and Genotyper 3.7. (Applied Biosystems). The AFLP bands were classified as present (1) or absent (0) in each individual, which was thus considered dominant or recessive ([Simpson, 1997](#)), i.e., detection of a band indicated the dominant genetic variant (the “plus phenotype”) ([Krauss, 2000](#); [Bonin et al., 2004](#)).

Analysis of the spatial structure of AFLP data

In order to estimate the SGS at population and landscape levels, the geographical (spatial) distance was measured as the Euclidean distance and the genetic distance was estimated from the pairwise kinship coefficient (F_{ij}) ([Hardy, 2003](#)). F_{ij} was measured using SPAGeDi v1.4 ([Vekemans & Hardy, 2004](#)).

For statistical reasons, we defined the width of spatial distance classes as including a minimum of 30 pairwise comparisons per distance class ([Doligez & Joly, 1997](#)). Thus, the smallest distance class width should not be less than 125 m at the local scale (i.e., within each

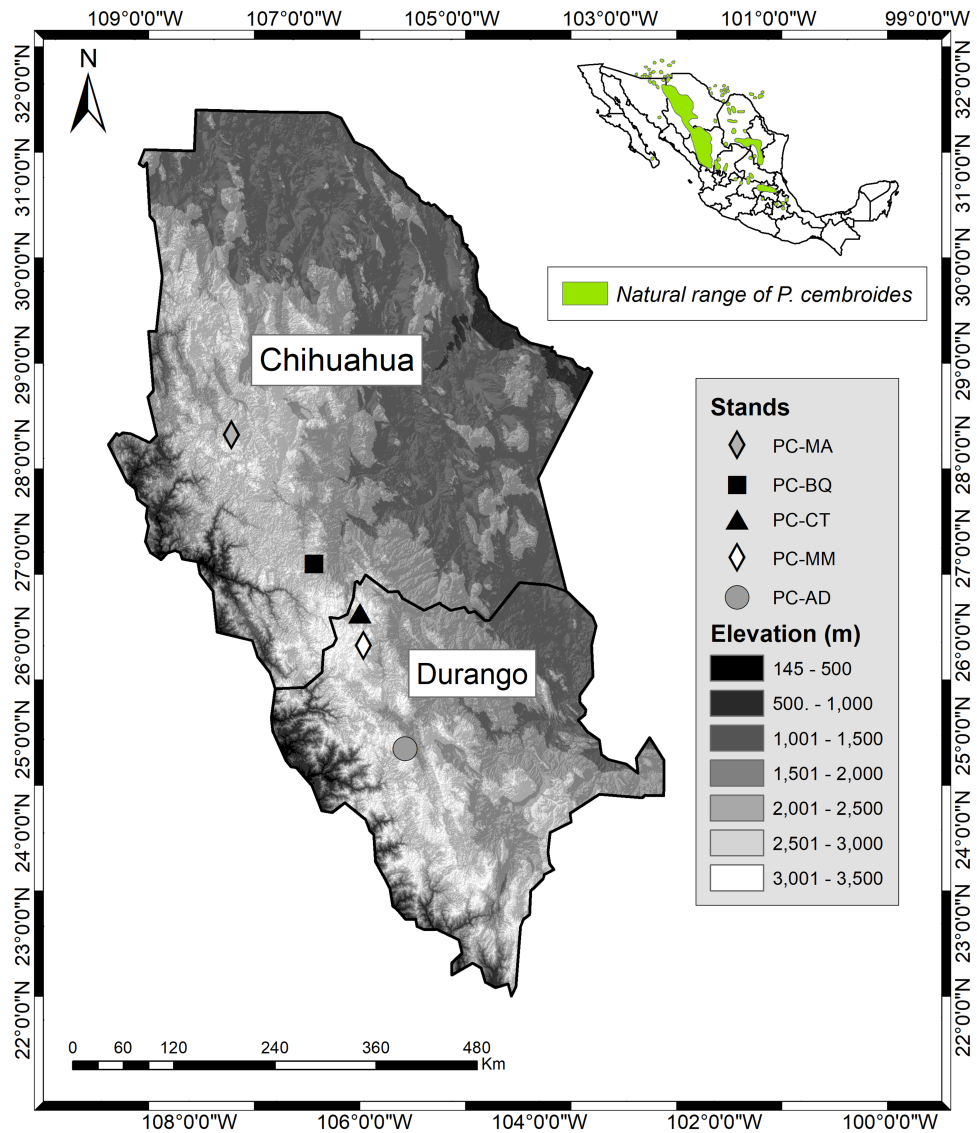


Figure 1 Location of the five *Pinus cembroides* seed stands under study. Mesa Azul (PC-MA): black diamond; Baquiriachi (PC-BQ): grey square; Mesa de la Majada (PC-MM): small white diamond; Los Adobe (PC-AD): grey circle and Cordón del Toro (PC-CT): white triangle. Source: Available in the ARCGIS software (at Esri, DigitalGlobe, GeoEye, Earthstar Geographics, CNES/Airbus DS, USDA, USGS, AEX, Getmapping, Aerogrid, IGN, IGP, swisstopo, and the GIS User Community). Maps were created using ArcGIS® software by Esri. Copyright ©Esri. All rights reserved.

Full-size  DOI: [10.7717/peerj.8002/fig-1](https://doi.org/10.7717/peerj.8002/fig-1)

of the five seed stands). The SGS statistics were therefore calculated for 125 m distance-class structures. However, as this autocorrelation technique are not capable of forecasting an appropriate analytical scale (*Peakall, Ruibal & Lindenmayer, 2003; Double et al., 2005*), we also calculated the SGS for distance class widths between 25 and 700 m (in 25 m steps from 25 to 300 m, in 50 m steps from 300 to 700 m), although the data did not comply with the condition of a minimum of 30 pairwise comparisons for the 25, 50, 75 and 100 m distance class widths.

Table 2 Some climate and soil conditions of the five *Pinus cembroides* seed stands studied in the Sierra Madre Occidental in the states of Chihuahua and Durango, Mexico (locations listed in Table 1).

Code	Mat (°C)	Map (mm)	Mmin (°C)	Mmax (°C)	Gsp (mm)	pH
PC-MA	11.8	689	-5.1	28.2	510	5.54
PC-BQ	12.3	627	-4.3	27.3	498	5.71
PC-CT	11.8	635	-4.4	26.2	514	6.05
PC-MM	11.0	644	-5.0	25.3	516	6.05
PC-AD	13.1	661	-2.4	27.9	518	6.05

Notes.

pH, Degree of acidity; Mat, Mean annual temperature; Map, Mean annual precipitation; Mmin, Mean minimum temperature in the coldest month; Mmax, Mean maximum temperature in the warmest month and; Gsp, Growing season precipitation, April to September.

At the large or landscape scale (among stands), the SGS was computed for distance class widths of six, seven, eight, 86 km and 168 km for a minimum of 2,900 tree pairs per distance class. For each spatial distance class, the 99% confidence interval (CI) was computed using 999 permutations (with SPAGeDi) (Manly, 2007). The probability value (P) was then computed for each spatial distance class and coefficient. After Bonferroni correction (Hochberg, 1988), the corrected critical p value (significance level $\alpha^* = 0.0005$) was calculated by dividing the original critical p value (0.05) by the number of comparisons or hypotheses ($m = 100$). Thus, the Bonferroni critical value of P was $1 - \alpha^* = 0.9995$ in this study (Hernández-Velasco et al., 2017).

The pairwise kinship coefficient (F_{ij}) for dominant markers in diploids was computed and averaged over a set of distance classes to detect the SGS. The F_{ij} coefficient, computed using SPAGeDi ver. 1.4, measures the occurrence of identical alleles at a given locus in a pair of individuals (Hardy, 2003), i.e., it estimates the ratio of differences of probabilities of identity (Rousset, 2002). If individuals are more closely related than individuals randomly chosen from the “reference” population, the relative kinship coefficients will have positive values. Consequently, negative values of the F_{ij} indicate that i and j are less closely related on average than random individuals (Hardy, 2003).

PCoA analysis

The binary AFLP data matrix was also analyzed by Principal Coordinate Analysis (PCoA), and Nei's Genetic Distance (Nei, 1972; Nei, 1978), which was determined using GenALEX v6.503 (Peakall and Smouse, 2012), to compute the genetic separation between the seed stands and trees. The first two coordinates were used to graphically display genetic differentiation of populations and individuals.

Detecting AFLP loci under natural selection (outlier AFLP loci)

In the present study, the SGS of AFLP markers under natural selection may be an indicator of environmentally adapted provenances (Epperson, 1992; Stingemore & Krauss, 2013). Candidate AFLP loci under natural selection were determined using differences in allele frequencies between populations, and the multinomial Dirichlet model and the Reversible Jump Markov Chain Monte Carlo algorithm were implemented in BayeScan v2.1 (Foll

et al., 2008). AFLP markers were used as purely dominant binary data, but the inbreeding coefficients (F_{IS}), used to estimate allele frequencies, were not able to be estimated from binary data. Therefore, BayeScan allowed F_{IS} to move freely within its prior range in order to still incorporate the uncertainty associated with this parameter.

A negative locus-specific component (A) value with posterior probability >0.99 indicates possible balancing or purifying selection, and positive values of the A and posterior probability >0.99 indicate diversifying selection (false discovery rates <0.01) (Foll et al., 2008; Foll et al., 2010). We used the parameter values of the chain and the model reported by Friedrich et al. (2018): output number of iterations (5,000), thinning interval size (10), pilot runs (20), length of pilot runs (5,000), additional burn in (50,000), prior odds for the neutral model (10), a lower boundary for uniform prior in the inbreeding coefficient F_{IS} (0) and a higher boundary for uniform prior in F_{IS} (1).

Clark and Evans aggregation index

The aggregation index (CE) proposed by Clark et al. (1954) was calculated using Spatial Genetic Software v1.0. The values obtained indicate the spatial structure, where $CE < 1$ represents an aggregated distribution, $CE = 1$ indicates a random structure and $CE > 1$ indicates a regular distribution. The statistical significance of CE was calculated using permutation tests (Degen, 2000).

RESULTS

The combination of the AFLP primers resulted in 281 polymorphic bands of 75 - 450 bp across the 173 individual *Pinus cembroides* trees analyzed. No candidate AFLP loci under differential selection (putative adaptive AFLP) were detected (posterior probability >0.99 and false discovery rates <0.01).

At the fine scale (within each of the five seed stands), significant autocorrelation ($P > 0.9995$, after Bonferroni correction) was only observed in PC-MA. In particular, significant autocorrelation was only detected in the first five distance class widths (i.e., 0–100 m, 0–125 m, 0–150 m, 0–175 m and 0–200 m) of the class sizes 100, 125, 150, 175 and 200 m) and the distance classes 50–75 m and 50–100 m (Table 3). F_{ij} was weakly positive in the first distance class in five distance class widths (0–75 m to 0–175 m) in PC-MA and in a few other distance classes in PC-CT and PC-AD. However, this index became more negative in larger distance class widths (>0 –125 m in PC-AD and >0 –200 m in PC-MA) (Tables 3 and 4). The values of the aggregation index of Clark and Evans (CE) indicated that the spatial distribution of the seed trees under study was only clumped in PC-MA and PC-AD (Tables 3 and 4).

At the large scale (among seed stands), the individuals in the distance classes of 0–6 km, 0–7 km, 0–8 km and 0–86 km were genetically more closely related than random individuals from the “reference group” calculated by F_{ij} . On the other hand, the individuals in other distance classes (0–168 km, 86–172 km, 172–258 km and 258–344 km) were found to be genetically significantly different, according to the F_{ij} values (Table 5).

At the large or landscape level (among seed stands, 6 to 168 km distances), the Principal Coordinate Analysis (PCoA - Coord. 1 vs. 2) clearly separated the five stands into four

Table 3 Analysis of the genetic spatial structure within the *Pinus cembroides* seed stands PC-MA, PC-BQ and PC-MM, considering the first class in distance class widths of 25–700 m, with 999 permutations. The analysis was conducted using SPAGeDi v1.4 (Vekemans & Hardy, 2004).

Distance(m)	F_{ij} vs. spatial distance					
	PC-MA $CE = 0.61^{***}$		PC-BQ $CE = 1.28^{**}$		PC-MM $CE = 1.05$ ns	
	$P(F_{ij}) < CI$	F_{ij}	$P(F_{ij}) < CI$	F_{ij}	$P(F_{ij}) < CI$	F_{ij}
0–25 [#]	0.277	−0.085	0.523	−0.029	0.473	−0.031
0–50 ^{##}	0.262	−0.061	0.514	−0.029	0.482	−0.031
0–75	0.999	0.041	0.393	−0.037	0.601	−0.025
0–100	0.9999 ⁺	0.030	0.553	−0.027	0.608	−0.026
0–125	0.9999 ⁺	0.020	0.244	−0.038	0.921	−0.016
0–150	0.9999 ⁺	0.009	0.195	−0.038	0.867	−0.019
0–175	0.9999 ⁺	0.006	0.276	−0.034	0.912	−0.020
0–200	0.9999 ⁺	−0.001	0.498	−0.030	0.838	−0.023
0–225	0.993	−0.007	0.520	−0.031	0.527	−0.029
0–250	0.994	−0.011	0.755	−0.027	0.549	−0.029
0–275	0.984	−0.015	0.448	−0.031	0.635	−0.028
0–300	0.973	−0.018	0.532	−0.030	0.652	−0.028
0–350	0.969	−0.019	0.695	−0.029	0.344	−0.031
0–400	0.986	−0.018	0.758	−0.029	0.327	−0.031
0–450	0.955	−0.021	0.598	−0.030	0.360	−0.030
0–500	0.938	−0.023	0.810	−0.029	0.494	−0.029
0–550	0.910	−0.024	0.707	−0.030	0.512	−0.029
0–600	0.897	−0.026	0.650	−0.030	0.194	−0.031
0–650	0.876	−0.026	0.266	−0.031	0.218	−0.030
0–700	0.823	−0.027	0.314	−0.031	0.282	−0.030

Notes.

F_{ij} , coefficient of kinship; P , probability of autocorrelation at stand level; CI , confidence interval; ⁺, significant results after Bonferroni correction; [#], significant autocorrelation detected in the 50–75 m distance class in the PC-MA stand; ^{##}, significant autocorrelation detected in the 50–100 m distance class in the PC-MA stand; CE , index of aggregation.

Asterisks indicate significant differences: ** at the 99.0% and *** at 99.9% level ns, not significant.

clusters (Fig. 2): PC-CT along with PC-MM located in Durango, PC-MA (Chihuahua), PC-AD (Durango) and PC-BQ (Chihuahua). However, the PCoA with Coordinate 1 vs. 3 revealed only three groups, and the three seed stands from Durango were grouped together (Fig. 3). The first two coordinates explained 69.7% of the variation in AFLP, and the first three coordinates explained 93.4% of the corresponding variation.

In a PCoA at the individual level, the first two coordinates explained a much lower percentage of the variation in AFLP (4.4 and 3.1%). Together the first three coordinates explained 10.1% of the variation. By plotting the first two coordinates, the 173 individual PC trees were not generally divided in separate groups. PC-MM had the largest mean TD, PC-BQ had the largest mean GD and PC-MA had the smallest mean GD (Fig. 4).

DISCUSSION

The results showed non-significant autocorrelation in 80% (four out of five) of the natural seed stands studied (Tables 3 and 4), i.e., a mainly random distribution in the space

Table 4 Analysis of the genetic spatial structure within the *Pinus cembroides* seed stands PC-CT and PC-AD, considering the first class in distance class widths from 25–700 m, with 999 permutations and a confidence interval of 99%. The analysis was conducted using SPAGeDi v1.4 (Vekemans & Hardy, 2004).

Distance	F_{ij} vs. spatial distance			
	PC-CT CE = 1.05 ns		PC-AD CE = 0.31***	
	$P(F_{ij}) < CI$	F_{ij}	$P(F_{ij}) < CI$	F_{ij}
0–25	0.903	0.072	0.964	0.010
0–50	0.981	0.053	0.953	0.010
0–75	0.464	–0.031	0.966	–0.003
0–100	0.127	–0.041	0.999	0.005
0–125	0.394	–0.031	0.996	–0.004
0–150	0.329	–0.032	0.983	–0.012
0–175	0.345	–0.032	0.997	–0.011
0–200	0.260	–0.033	0.997	–0.013
0–225	0.157	–0.034	0.998	–0.013
0–250	0.357	–0.031	0.995	–0.016
0–275	0.308	–0.031	0.997	–0.016
0–300	0.090	–0.033	0.997	–0.016
0–350	0.065	–0.034	0.995	–0.017
0–400	0.347	–0.030	0.999	–0.016
0–450	0.603	–0.029	0.996	–0.036
0–500	0.734	–0.028	0.998	–0.019
0–550	0.805	–0.028	0.998	–0.019
0–600	0.829	–0.028	0.999	–0.020
0–650	0.943	–0.028	0.998	–0.022
0–700	0.868	–0.028	0.998	–0.023

Notes.

F_{ij} , coefficient of kinship; P , probability of autocorrelation at stand level; CI , confidence interval; CE , index of aggregation. Asterisks indicate significant differences: *** at 99.9% level; ns, not significant.

Table 5 Analysis of the genetic spatial structure among the *Pinus cembroides* seed stands, considering a distance class size of 86 km, 999 permutations and a confidence interval of 99%. The analysis was conducted using SPAGeDi v1.4 (Vekemans & Hardy, 2004).

F_{ij}	F_{ij} vs. spatial distance (SPAGeDi v1.4)		MT
	$P(F_{ij}) < CI$	$P(F_{ij}) > CI$	
–0.000003	0.9999 (0–86) ⁺	0.9999 (86–172) ⁺ 0.9999 (172–258) ⁺ 0.9999 (258–344) ⁺	4,132

Notes.

F_{ij} , coefficient of kinship; GD , mean genetic distance; $P(r)$, probability of autocorrelation per stand (in distance class, m); CI , confidence interval; MT , minimal pairs of trees for class (class distance); +, significant results after Bonferroni correction.

of the genetic variants of the *Pinus cembroides* at the population level. The results thus did not confirm our hypothesis of weak SGS at the population level. Other studies of several Mexican pine species such as *P. cembroides*, *P. discolor*, *P. durangensis*, *P. teocote* (Hernández-Velasco et al., 2017), *P. arizonica* and *P. cooperi* (Friedrich et al., 2018) also detected no too weak SGS at the local scale. Especially for *P. cembroides*, Hernández-Velasco

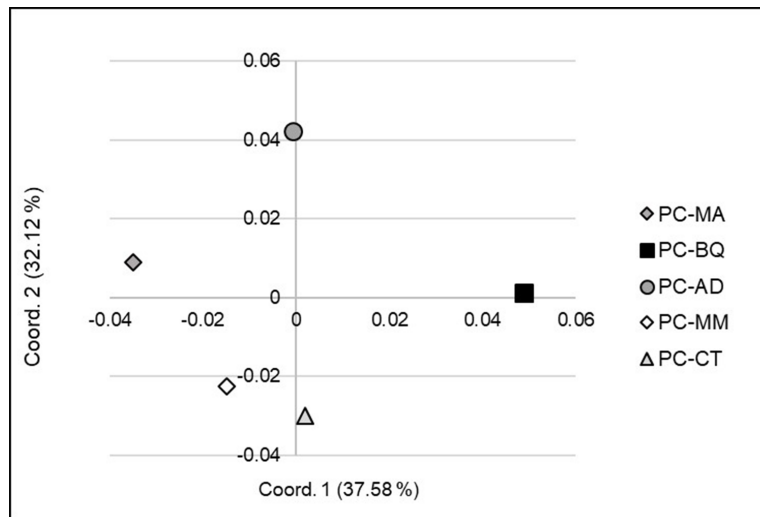


Figure 2 Principal Coordinates Analysis (PCoA) (coordinate 1 vs. 2) showing the genetic separation between the five seed stands of *Pinus cembroides*: Location with abbreviation of seed stand name: Mesa Azul (PC-MA): grey diamond, Baquiriachi (PC-BQ): black square, Los Adobe (PC-AD): grey circle, Mesa de la Majada (PC-MM): white diamond and Cordón del Toro (PC-CT): grey triangle.

Full-size [DOI: 10.7717/peerj.8002/fig-2](https://doi.org/10.7717/peerj.8002/fig-2)

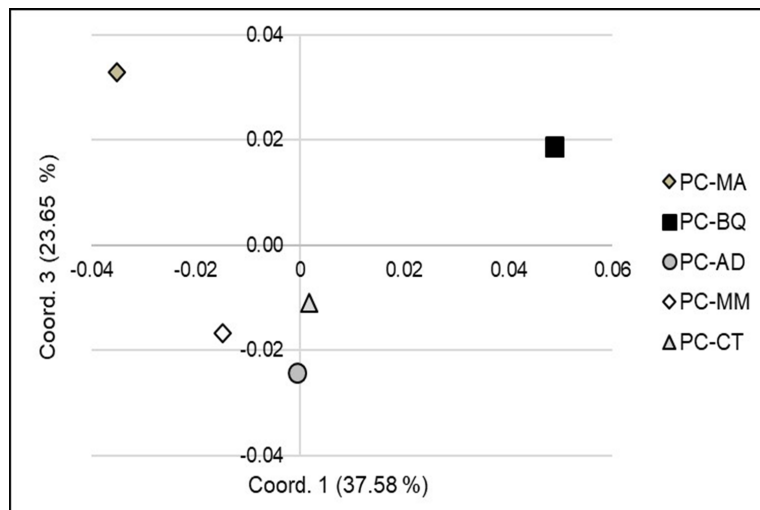


Figure 3 Principal Coordinates Analysis (PCoA) (coordinate 1 vs. 3) showing the genetic separation between the five *Pinus cembroides* seed stands: Mesa Azul (PC-MA): grey diamond, Baquiriachi (PC-BQ): black square, Los Adobe (PC-AD): grey circle, Mesa de la Majada (PC-MM): white diamond and Cordón del Toro (PC-CT): grey triangle.

Full-size [DOI: 10.7717/peerj.8002/fig-3](https://doi.org/10.7717/peerj.8002/fig-3)

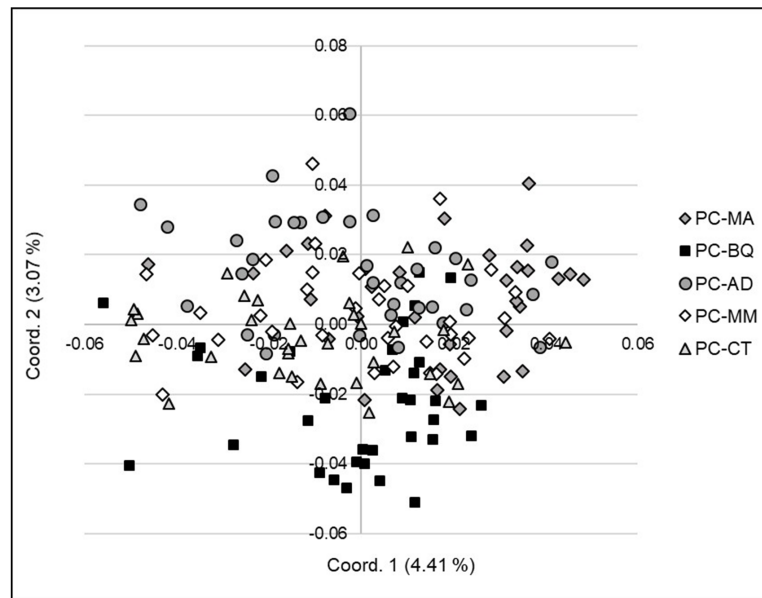


Figure 4 Principal Coordinates Analysis (PCoA) (coordinate 1 vs. 3) showing the genetic separation between the individuals in the five *Pinus cembroides* seed stands: Mesa Azul (PC-MA): grey diamond, Baquiriachi (PC-BQ): black square, Los Adobe (PC-AD): grey circle, Mesa de la Majada (PC-MM): white diamond and Cerdón del Toro (PC-CT): grey triangle.

Full-size DOI: [10.7717/peerj.8002/fig-4](https://doi.org/10.7717/peerj.8002/fig-4)

et al. (2017) found no SGS and smaller mean Tanimoto distances (mean 0.52) in three small (≤ 12.1 ha), closely spaced (≤ 10 km) seed stands.

These results can be explained by the random patterns and large distances over which pollen and seeds are dispersed (Ennos, 1994), along with a breeding system with a low selfing rate, non-significant local genetic drift and selection, and low population density supporting larger gene dispersal distances (Vekemans & Hardy, 2004). This particularly applies to *P. cembroides*, a species with wind-dispersed pollen, animal-dispersed seed and generally low population density (Little Jr, 1977; McCune, 1988; Tomback & Linhart, 1990), all of which favour gene flow (Vekemans & Hardy, 2004). This explanation is supported by the almost always negative pairwise kinship coefficients (F_{ij}) (Tables 3 and 4) and greater genetic diversity than in other Mexican pine species (Wehenkel *et al.*, 2015); (Hernández-Velasco *et al.*, 2017). Furthermore, the overlapping seed shadows and demographic mortality may also result in non-significant SGS (Hamrick, Murawski & Nason, 1993; Epperson & Alvarez-Buylla, 1997; Parker *et al.*, 2001; Fuchs & Hamrick, 2010). In our study, the trees sampled in each stand were heath, adult, dominant and occurred in the older age group; it is possible that SGS would have been revealed if other (younger) age classes had been sampled, as with *Cecropia obtusifolia* (Epperson & Alvarez-Buylla, 1997). Moreover, the sampling strategy may also be a decisive factor (see below).

Significant spatial autocorrelation along with almost always positive F_{ij} was only observed in the first distance classes in the 0–100 to 0–200 m class widths. The autocorrelation was also almost significant (together with a positive F_{ij}) in the 0–75 m distance class, indicating

family structure (in these distance classes). However, the first classes in the smallest widths tested (0–25 and 0–50 m) showed no significant SGS along with the two most negative F_{ij} in this study (Table 3). However, the lack of significance may have been due to an insufficient number of tree pairs (i.e., insufficient repetitions) in these small class sizes. We therefore assumed that there was no significant family structure in smaller groups of adult, dominant and older *P. cembroides* in PC-MA. However, in the first classes in larger distance class widths (i.e., 0–225 to 0–700 m) in PC-MA, also with sufficient tree pairs for statistical analysis, this index became more and more negative (Table 3). Thus, the *P. cembroides* tree pairs became more and more genetically different and larger from a distance of 200 m, indicating weakened gene flow, probably caused by isolation by distance gene dispersal.

The significant SGS, detected only in PC-MA, may have been caused by the range of spatial scales and the sampling strategy in this stand. In contrast to the other four stands, PC-MA was linear and had the longest linear expansion (2,300 m rather than <1,300 m) (Fig. 5), i.e., the range of spatial scale encompassed by the sample was the largest in this study. In addition, the larger the range, the better the regression performance in the SGS analysis (Heuertz et al., 2003; Vekemans & Hardy, 2004). Moreover, the sampling strategy was similar to a line-transect scheme, which may perform slightly better than the simple-random scheme used in our study (Zeng et al., 2010). The significant pattern of SGS in PC-MA is equal to that observed in the vast majority of studies which have often detected SGS only at the smallest spatial scales studied. This finding has usually been interpreted as a consequence of an isolation-by-distance process with restricted seed dispersal within plant populations (e.g., Sokal & Wartenberg, 1983; Streiff et al., 1998; Sork et al., 2002; Vekemans & Hardy, 2004).

Significant SGS was observed (Table 5) at the landscape scale (among the five seed stands), supporting the theory of isolation by distance as a consequence of restricted pollen and seed dispersal (Wright, 1938). However, the lack of outlier AFLP loci indicated that local selection was not an important factor in relation to SGS in this study (Epperson, 1992).

The biological meaning of the spatial genetic patterns can easily be misinterpreted without highly variable markers, appropriate sampling or detailed ecological data such as the age, sex and social status of the individuals sampled (Double et al., 2005). We used (i) stable markers, but with many loci (281 AFLP) (Vekemans & Hardy, 2004; Cavers et al., 2005), (ii) the social status (dominant trees), (iii) sex (monoecious) and (iv) proximate age (the higher age-group) of the individuals sampled. However, the sampling number and structure may represent two of the weakest points in this study. More than 35 samples per stand and a larger range of spatial scale are probably needed to detect weak SGS, which is expected in tree species with wind-dispersed pollen and animal-dispersed seed (Hamrick, Murawski & Nason, 1993; Vekemans & Hardy, 2004), such as the wingless seed of *P. cembroides* (Richardson, 2000). The line-transect scheme may also be the best sampling strategy (Zeng et al., 2010).

Although we detected SGS at landscape (among seed stands) level, our study is not strong enough in relation to coverage of the study site and intermediate distance intervals, as only five stands were studied. In addition, the range of spatial scales included in the sample was not maximized (Vekemans & Hardy, 2004). Moreover, if genetic variation is

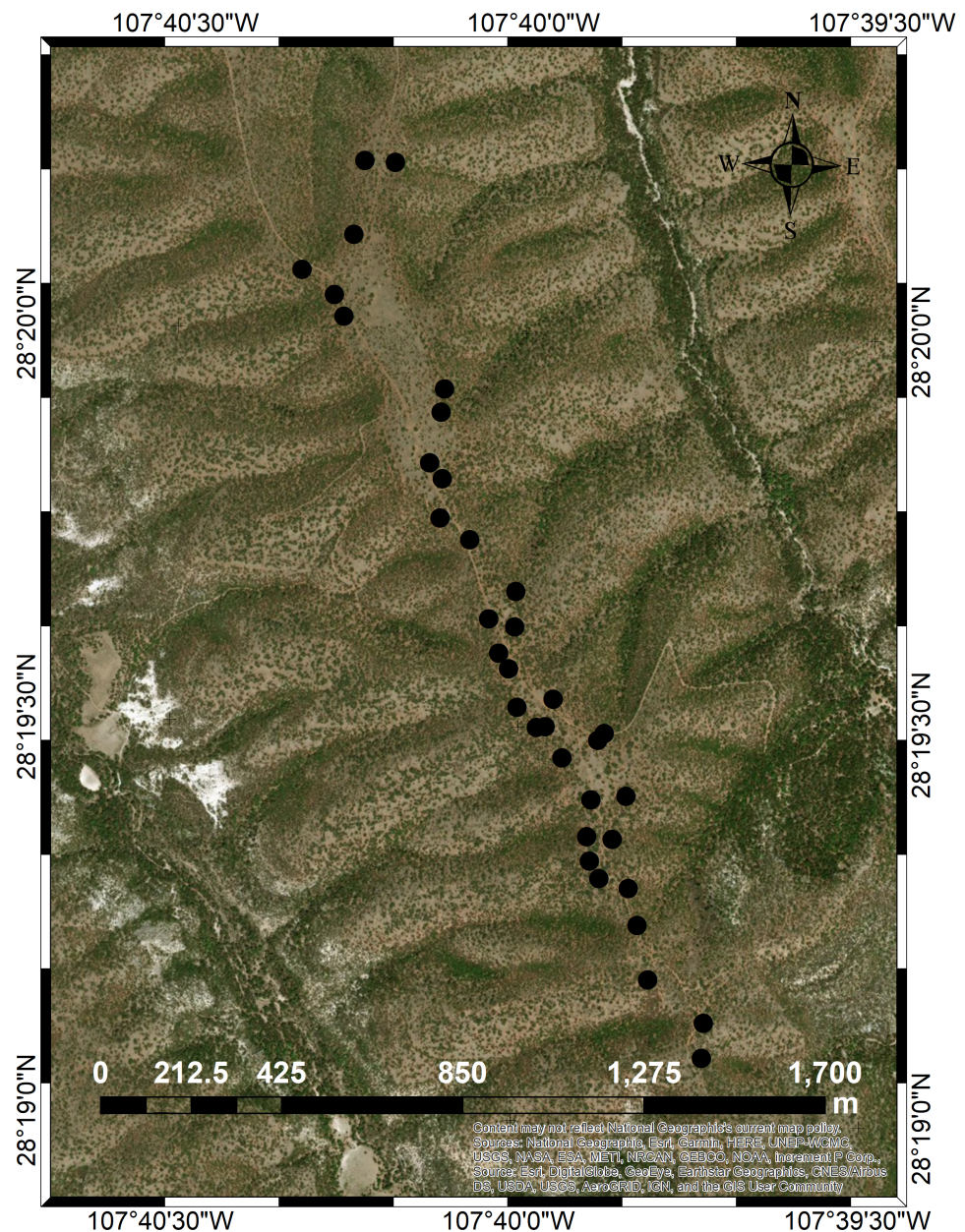


Figure 5 Map of the *Pinus cembroides* seed stand Mesa Azul (PC-MA) and the positions of the 34 sample trees genetically analyzed (black circles). Source: ESRI Inc. (1999–2012). ArcGIS for Desktop 10. USDA Natural Resources Conservation Service.

Full-size  DOI: [10.7717/peerj.8002/fig-5](https://doi.org/10.7717/peerj.8002/fig-5)

arranged clinally, then sampling only at well-separated stands in this continuum may create an artificial set of “isolated populations” that nevertheless are connected by the unsampled trees in between. Furthermore, if the distance classes are set exactly to the distances that separate the sampling points, this effect may be exaggerated.

CONCLUSIONS

On the basis of the SGS analysis at the local scale and also assuming that SGS was weak, we concluded that seed stands of *P. cembroides* may represent small-scale units. However, a minimum width of 225 m is required in these stands to produce seeds without significant loss of genetic variation, because all classes with distance class size 225 m or larger did not show significant SGS and F_{ij} was negative. Indeed, the Mexican norm for forest germplasm (NMX-AA-SC-169-2016) requires a minimum stand size of two hectares (e.g., 141 × 141 m), which, however, may be too small.

On the basis of the SGS analysis, we conclude that establishment of a close network of PC seed stands separated by a maximum distance of 6 km can prevent greater loss of local genetic variants and alteration of SGS. However, we estimate that establishing such a high density of seed stands would not be economically feasible in forest management and conservation plans.

In addition, all of the AFLP loci identified are probably neutral markers. They may consequently be more variable and more differentiated than adaptive markers, as a result of isolation and genetic drift (*Petit et al., 2001; McKay & Latta, 2002*). Definition of seed collection zones by differences in genetic adaptation could therefore result in an overly dense network of seed stands.

ADDITIONAL INFORMATION AND DECLARATIONS

Funding

This work was supported by Comisión Nacional Forestal (CONAFOR), Mexico. The funders had no role in study design, data collection and analysis, decision to publish, or preparation of the manuscript.

Grant Disclosures

The following grant information was disclosed by the authors:
Comisión Nacional Forestal (CONAFOR), Mexico.

Competing Interests

Christian Wehenkel is an Academic Editor for PeerJ.

Author Contributions

- Luis C. García-Zubia performed the experiments, analyzed the data, prepared figures and/or tables, approved the final draft.
- Javier Hernández-Velasco performed the experiments, analyzed the data, prepared figures and/or tables, approved the final draft.
- José C. Hernández-Díaz analyzed the data, prepared figures and/or tables, authored or reviewed drafts of the paper, approved the final draft.
- Sergio L. Simental-Rodríguez performed the experiments, prepared figures and/or tables, approved the final draft.
- Carlos A. López-Sánchez analyzed the data, prepared figures and/or tables, authored or reviewed drafts of the paper, approved the final draft.

- Carmen Z. Quiñones-Pérez analyzed the data, authored or reviewed drafts of the paper, approved the final draft.
- Artemio Carrillo-Parra analyzed the data, prepared figures and/or tables, approved the final draft.
- Christian Wehenkel conceived and designed the experiments, analyzed the data, contributed reagents/materials/analysis tools, authored or reviewed drafts of the paper, approved the final draft.

Data Availability

The following information was supplied regarding data availability:

Raw data are available in the [Supplemental File](#).

Supplemental Information

Supplemental information for this article can be found online at <http://dx.doi.org/10.7717/peerj.8002#supplemental-information>.

REFERENCES

- Amr AR, Abeer EEK. 2011.** Hypolipideimic and hypocholestermic effect of pine nuts in rats fed high fat, cholesterol-diet. *World Applied Sciences Journal* **15(12)**:1667–1677.
- Ávila Flores IJ, Hernández-Díaz JC, González-Elizondo MS, Prieto-Ruiz JÁ, Wehenkel C. 2016.** Degree of hybridization in seed stands of *Pinus engelmannii* Carr. In the Sierra Madre Occidental, Durango, Mexico. *PLOS ONE* **11(4)**:e0152651 DOI [10.1371/journal.pone.0152651](https://doi.org/10.1371/journal.pone.0152651).
- Bonin A, Bellemain E, Bronken EP, Pompanon F, Brochmann C, Taberlet P. 2004.** How to track and assess genotyping errors in population genetics studies. *Molecular Ecology* **13**:3261–3273 DOI [10.1111/j.1365-294X.2004.02346.x](https://doi.org/10.1111/j.1365-294X.2004.02346.x).
- Cavers S, Degen B, Caron H, Lemes MR, Margis R, Salgueiro F, Lowe AJ. 2005.** Optimal sampling strategy for estimation of spatial genetic structure in tree populations. *Heredity* **95**:281–289 DOI [10.1038/sj.hdy.6800709](https://doi.org/10.1038/sj.hdy.6800709).
- Clark PJ, Evans FC. 1954.** Distance to nearest neighbor as a measure of spatial relationships in populations. *Ecology* **35**:445–453 DOI [10.2307/1931034](https://doi.org/10.2307/1931034).
- Comisión Nacional Forestal (CONAFOR). 2009.** *Inventario Nacional Forestal y de Suelos de México 2004–2009—1st ed.* Comisión Nacional Forestal, Zapopan, Jalisco, México.
- Degen B. 2000.** SGS: spatial genetic software. Computer program and user's manual. Available at https://www.researchgate.net/publication/242407547_Spatial_Genetic_Software_SGS_Version_10_c.
- Doligez A, Joly HI. 1997.** Genetic diversity and spatial structure within a natural stand of a tropical forest tree species, *Carapa procera* (Meliaceae), in French Guiana. *Heredity* **79**:72–82 DOI [10.1038/hdy.1997.124](https://doi.org/10.1038/hdy.1997.124).
- Double MC, Peakall R, Beck NR, Cockburn A. 2005.** Dispersal, philopatry, and infidelity: dissecting local genetic structure in superb fairy-wrens (*Malurus Cyaneus*). *Evolution* **59(3)**:625–635 DOI [10.1111/j.0014-3820.2005.tb01021.x](https://doi.org/10.1111/j.0014-3820.2005.tb01021.x).

- Ennos RA. 1994.** Estimating the relative rates of pollen and seed migration among plant populations. *Heredity* 72:250–259 DOI 10.1038/hdy.1994.35.
- Epperson BK. 1992.** Spatial structure of genetic variation within populations of forest trees. *New Forests* 6:257–278 DOI 10.1007/BF00120648.
- Epperson BK. 2003.** Covariances among join-count spatial autocorrelation measures. *Theoretical Population Biology* 64:81–87 DOI 10.1016/S0040-5809(03)00023-6.
- Epperson BK, Alvarez-Buylla ER. 1997.** Limited seed dispersal and genetic structure in life stages of *Cecropia obtusifolia*. *Evolution* 51:275–282 DOI 10.1111/j.1558-5646.1997.tb02409.x.
- Epperson BK, Li T. 1996.** Measurement of genetic structure within populations using Moran's spatial autocorrelation statistics. *Proceedings of the National Academy of Sciences of the United States of America* 93:10528–10532 DOI 10.1073/pnas.93.19.10528.
- Flores-Rentería L, Wegier A, Ortega Del Vecchio D, Ortíz-Medrano A, Piñero D, Whipple AV, Molina-Freaner F, Domínguez CA. 2013.** Genetic, morphological, geographical and ecological approaches reveal phylogenetic relationships in complex groups, an example of recently diverged pinyon pine species (Subsection Cembroides). *Molecular Phylogenetics and Evolution* 69:940–949 DOI 10.1016/j.ympev.2013.06.010.
- Foll M, Fischer MC, Heckel G, Excoffier L. 2010.** Estimating population structure from AFLP amplification intensity. *Molecular Ecology* 19:4638–4647 DOI 10.1111/j.1365-294X.2010.04820.x.
- Foll M, Gaggiotti O. 2008.** A genome-scan method to identify selected loci appropriate for both dominant and codominant markers: a bayesian perspective. *Genetics* 180:977–993 DOI 10.1534/genetics.108.092221.
- Friedrich SC, Hernández-Díaz JC, Leinemann L, Prieto-Ruíz JA, Wehenkel C. 2018.** Spatial genetic structure in seed stands of *Pinus arizonica* Engelm. and *Pinus cooperi* Blanco in the state of Durango, Mexico. *Forest Science* 64(2):191–202 DOI 10.1093/forsci/fxx007.
- Fuchs EJ, Hamrick JL. 2010.** Spatial genetic structure within size classes of the endangered tropical tree *Guaiacum sanctum* (Zygophyllaceae). *American Journal of Botany* 97:1200–1207 DOI 10.3732/ajb.0900377.
- Gernandt D, Liston A, Piñero D. 2003.** Phylogenetics of *Pinus* subsections cembroides and nelsoniae inferred from cpDNA sequences. *Systematic Botany* 28:657–673 DOI 10.1043/02-63.1.
- Hamrick JL, Murawski DA, Nason JD. 1993.** The influence of seed dispersal mechanisms on the genetic structure of tropical tree populations. *Vegetatio* 107/108:281–297 DOI 10.1007/BF00052230.
- Hardy OJ. 2003.** Estimation of pairwise relatedness between individuals and characterization of isolation-by-distance processes using dominant genetic markers. *Molecular Ecology* 12:1577–1588 DOI 10.1046/j.1365-294X.2003.01835.x.
- Hernández-Velasco J, Hernández-Díaz JC, Fladung M, Cañadas-López Á, Prieto-Ruíz JÁ, Wehenkel C. 2017.** Spatial genetic structure in four *Pinus* species in the Sierra

- Madre Occidental, Durango, Mexico. *Canadian Journal of Forest Research* **47**:73–80 DOI [10.1139/cjfr-2016-0154](https://doi.org/10.1139/cjfr-2016-0154).
- Heuertz M, Vekemans X, Hausman JF, Palada M, Hardy OJ. 2003.** Estimating seed vs. pollen dispersal from spatial genetic structure in the common ash. *Molecular Ecology* **12**:2483–2495 DOI [10.1046/j.1365-294X.2003.01923.x](https://doi.org/10.1046/j.1365-294X.2003.01923.x).
- Hochberg Y. 1988.** A sharper Bonferroni procedure for multiple tests of significance. *Biometrika* **75**:800–802 DOI [10.1093/biomet/75.4.800](https://doi.org/10.1093/biomet/75.4.800).
- Hubbard JA, McPherson GR. 1997.** Acorn selection by Mexican jays: a test of a tri-trophic symbiotic relationship hypothesis. *Oecologia* **110**:143–146 DOI [10.1007/s004420050142](https://doi.org/10.1007/s004420050142).
- IUCN. 2015.** The IUCN red list of threatened species—Version 2015-4. Available at <http://www.iucnredlist.org> (accessed on 20 November 2015).
- Krauss SL. 2000.** Accurate gene diversity estimates from amplified fragment length polymorphism (AFLP) markers. *Molecular Ecology* **9**:1241–1245 DOI [10.1046/j.1365-294x.2000.01001.x](https://doi.org/10.1046/j.1365-294x.2000.01001.x).
- Leinemann L, Kleinschmit J, Fussi B, Hosius B, Kuchma O, Arenhövel W, Lemmen P, Kätzel R, Rogge M, Finkeldey R. 2014.** Genetic composition and differentiation of sloe (*Prunus spinosa* L.) populations in Germany with respect to the tracing of reproductive plant material. *Plant Systematics and Evolution* **300**:2115–2125 DOI [10.1007/s00606-014-1027-7](https://doi.org/10.1007/s00606-014-1027-7).
- Leinemann L, Steiner W, Hosius B, Kuchma O, Arenhövel W, Fussi B, Haase B, Kätzel R, Rogge M, Finkeldey R. 2013.** Genetic variation of chloroplast and nuclear markers in natural populations of hazelnut (*Corylus avellana* L.) in Germany. *Plant Systematics and Evolution* **299**:369–378 DOI [10.1007/s00606-012-0727-0](https://doi.org/10.1007/s00606-012-0727-0).
- Little Jr EL. 1977.** Research in the pinyon-juniper woodland. In: Aldon EF, Loring TJ, eds. *Proceedings of the workshop: ecology, uses, and management of pinyon-juniper woodlands—Albuquerque, N.M., 24–25 1977*. Department of Agriculture, Forest Service, Rocky Mountain Forest and Range Experiment Station, Fort Collins, CO, U.S., 8–19.
- López-Mata L. 2001.** Proteins, amino acids and fatty acids composition of nuts from the Mexican endemic rarity, *Pinus maximartinezii*, and its conservation implications. *Interciencia* **26**(12):606–610.
- Luna-cavazos M, Romero-Manzanares A, García-Moya E. 2008.** Afinidades en la flora genérica de piñonares del norte y centro de México: un análisis fenético. *Revista Mexicana de Biodiversidad* **79**:449–458.
- Manly BFJ. 2007.** Randomization, Bootstrap and Monte Carlo Methods in Biology. 3rd Edition. Chapman and Hall, London. *Journal of the Royal Statistical Society: Series A (Statistics in Society)* 480.
- McCue KA, Buckler ES, Holtsford TP. 1996.** A hierarchical view of genetic structure in the rare annual plant *Clarkia springvillensis*. *Conservation Biology* **10**:1425–1434 DOI [10.1046/j.1523-1739.1996.10051425.x](https://doi.org/10.1046/j.1523-1739.1996.10051425.x).
- McCune B. 1988.** Ecological diversity in North American Pines. *American Journal of Botany* **75**:353–368 DOI [10.2307/2443983](https://doi.org/10.2307/2443983).

- McKay JK, Latta RG. 2002. Adaptive population divergence: markers, QTL and traits. *Trends in Ecology & Evolution* 17:285–291 DOI 10.1016/S0169-5347(02)02478-3.
- Mueller UG, Wolfenbarger LL. 1999. AFLP genotyping and fingerprinting. *Trends in Ecology & Evolution* 14:389–394 DOI 10.1016/S0169-5347(99)01659-6.
- Nei M. 1972. Genetic distance between populations. *American Naturalist* 106:283–292 DOI 10.1086/282771.
- Nei M. 1978. Estimation of average heterozygosity and genetic distance from a small number of individuals. *Genetics* 89:583–590.
- Parker KC, Hamrick JL, Parker AJ, Nason JD. 2001. Fine-scale genetic structure in *Pinus clausa* (Pinaceae) populations: effects of disturbance history. *Heredity* 87:99–113 DOI 10.1046/j.1365-2540.2001.00914.x.
- Peakall R, Ruibal M, Lindenmayer DB. 2003. Spatial autocorrelational analysis offers new insights into gene flow in the Australian bush rat, *Rattus fuscipes*. *Evolution* 57:1182–1195 DOI 10.1111/j.0014-3820.2003.tb00327.x.
- Peakall R, Smouse PE. 2012. GenALEx 6.5: genetic analysis in Excel. Population genetic software for teaching and research—an update. *Bioinformatics* 28:2537–2539 DOI 10.1093/bioinformatics/bts460.
- Petit C, Fréville H, Mignot A, Colas B, Riba M, Imbert E, Hurtrez-Boussés S, Virevaire M, Olivieri I. 2001. Gene flow and local adaptation in two endemic plant species. *Biological Conservation* 100:21–34 DOI 10.1016/S0006-3207(00)00204-4.
- Richardson D. 2000. *Ecology and biogeography of Pinus*. Cambridge: Cambridge University Press, 548.
- Rousset F. 2002. Inbreeding and relatedness coefficients: what do they measure? *Heredity* 88:371–380 DOI 10.1038/sj.hdy.6800065.
- Rousset F. 2004. *Genetic structure and selection in subdivided populations*. Princeton: Princeton Univ. Press.
- Rzedowski J. 1978. *Vegetación de México. Ed. Limusa. 4a*. Mexico City: Reimpresión, 432.
- Segelbacher G, Cushman SA, Epperson BK, Fortin M-J, Francois O, Hardy OJ, Holderegger R, Taberlet P, Waits LP, Manel S. 2010. Applications of landscape genetics in conservation biology: concepts and challenges. *Conservation Genetics* 11:375–385 DOI 10.1007/s10592-009-0044-5.
- Simpson J. 1997. Amplified fragment length polymorphisms (AFLP's). *Botanical Sciences* 60:119–122 DOI 10.17129/botsci.1524.
- Slatkin M, Arter HE. 1991. Spatial autocorrelation methods in population genetics. *The American Naturalist* 138:499–517 DOI 10.1086/285228.
- Sokal RR, Wartenberg DE. 1983. A test of spatial autocorrelation analysis using an isolation-by-distance model. *Genetics* 105(1):219–237.
- Sork VL, Davis FW, Smouse PE, Apsit VJ, Dyer RJ, Fernandez-M JF, Kuhn B. 2002. Pollen movement in declining populations of California Valley oak, *Quercus lobata*: where have all the fathers gone? *Molecular Ecology* 11(9):1657–1668 DOI 10.1046/j.1365-294X.2002.01574.x.

- Stingemore JA, Krauss SL. 2013.** Genetic delineation of local provenance in *Persoonia longifolia*: implications for seed sourcing for ecological restoration. *Restoration Ecology* 21:49–57 DOI 10.1111/j.1526-100X.2011.00861.x.
- Streiff R, Labbe T, Bacilieri R, Steinkellner H, Glossl J, Kremer A. 1998.** Within-population genetic structure in *Quercus robur* L. and *Quercus petraea* (Matt.) Liebl. assessed with isozymes and microsatellites. *Molecular Ecology* 7:317–328 DOI 10.1046/j.1365-294X.1998.00360.x.
- Tomback DF, Linhart YB. 1990.** The evolution of bird-dispersed pines. *Evolutionary Ecology* 4:185–219 DOI 10.1007/BF02214330.
- Van Dyck H, Baguette M. 2005.** Dispersal behaviour in fragmented landscapes: routine or special movements? *Basic and Applied Ecology* 6(6):535–545 DOI 10.1016/j.baae.2005.03.005.
- Vekemans X, Hardy OJ. 2004.** New insights from fine-scale spatial genetic structure analyses in plant populations. *Molecular Ecology* 13(4):921–935 DOI 10.1046/j.1365-294X.2004.02076.x.
- Vos P, Hogers R, Bleeker M, Reijans M, Lee T Van De, Hornes M, Friters A, Pot J, Paleman J, Kuiper M, Zabeau M. 1995.** AFLP: a new technique for DNA fingerprinting. *Nucleic Acids Research* 23:4407–4414 DOI 10.1093/nar/23.21.4407.
- Wehenkel C, Simental-Rodríguez SL, Silva-Flores R, Hernández-Díaz JC, López-Sánchez CA. 2015.** Discrimination of 59 seed stands of various Mexican pine species based on 43 dendrometric, climatic, edaphic and genetic traits. *Forstarchiv* 86:194–201 DOI 10.4432/0300-4112-86-194.
- Wright S. 1938.** Size of population and breeding structure in relation to evolution. *Science* 87:430–431.
- Zeng LY, Xu LL, Tang SQ, Tersing T, Geng YP, Zhong Y. 2010.** Effect of sampling strategy on estimation of fine-scale spatial genetic structure in *Androsace tapete* (Primulaceae), an alpine plant endemic to Qinghai-Tibetan Plateau. *Journal of Systematics and Evolution* 48(4):257–264 DOI 10.1111/j.1759-6831.2010.00084.x.