

Predictors and Consequences of Global DNA Methylation in Cord Blood and at Three Years

Julie B. Herbstman^{1*}, Shuang Wang², Frederica P. Perera¹, Sally A. Lederman³, Julia Vishnevetsky¹, Andrew G. Rundle⁴, Lori A. Hoepner¹, Lirong Qu¹, Deliang Tang¹

1 Department of Environmental Health Sciences, Columbia University Mailman School of Public Health, New York, New York, United States of America, **2** Department of Biostatistics, Columbia University Mailman School of Public Health, New York, New York, United States of America, **3** Institute of Human Nutrition, Columbia University Medical Center, New York, New York, United States of America, **4** Department of Epidemiology, Columbia University Mailman School of Public Health, New York, New York, United States of America

Abstract

DNA methylation changes have been implicated in many common chronic diseases leading to the hypothesis that environmental and age-related DNA methylation changes within individuals are involved in disease etiology. Few studies have examined DNA methylation changes within an individual over time and all of these studies have been conducted in adults. Here, we aim to characterize how global DNA methylation changes from birth to age three within a longitudinal birth cohort study and to determine whether there are consistent predictors of DNA methylation levels measured three years apart. We measured global DNA methylation in the same children at birth (cord blood) and again at three years of age among 165 children, using an immunoassay. We found that on average, DNA methylation was significantly higher in blood at age 3-years than in cord blood ($p < 0.01$). However, for any individual child, the difference was less than would be expected by chance. We found that pre-pregnancy BMI was negatively predictive of both cord and three-year DNA methylation, even after statistical adjustment to account for the correlation between cord blood and three-year DNA methylation. The biologic implications of small changes in global DNA methylation are unknown. However, the observation that global DNA methylation levels persist within an individual from birth to age three supports the belief that factors that influence global DNA methylation, including pre-pregnancy BMI, may confer long-term effects.

Citation: Herbstman JB, Wang S, Perera FP, Lederman SA, Vishnevetsky J, et al. (2013) Predictors and Consequences of Global DNA Methylation in Cord Blood and at Three Years. PLoS ONE 8(9): e72824. doi:10.1371/journal.pone.0072824

Editor: Osman El-Maarri, University of Bonn, Institut of Experimental Hematology and Transfusion Medicine, Germany

Received: January 30, 2013; **Accepted:** July 19, 2013; **Published:** September 4, 2013

Copyright: © 2013 Herbstman et al. This is an open-access article distributed under the terms of the Creative Commons Attribution License, which permits unrestricted use, distribution, and reproduction in any medium, provided the original author and source are credited.

Funding: P01 ES09600/EPA RD-83450901, R01 ES08977R03, R03 CA150140-01, R00 ES017051-04, P01 ES009089, and private foundations including John and Wendy Neu Family Foundation, the Trustees of the Blanchette Hooker Rockefeller Fund, and the New York Community Trust. The funders had no role in study design, data collection and analysis, decision to publish, or preparation of the manuscript.

Competing Interests: The authors have declared that no competing interests exist.

* E-mail: jh2678@columbia.edu

Introduction

DNA methylation is an epigenetic process by which non-sequence-based regulatory information can be mitotically transferred from mother to daughter cell. Involving the addition of a methyl group at the 5-position of a cytosine-guanine (CpG) dinucleotide, DNA methylation inhibits gene expression by interfering with transcription binding proteins and is associated with chromatin remodeling [1]. CpG sites are not evenly represented throughout the genome. Over ninety percent of methylated CpG sites lie within transposable, repetitive elements, resulting in their silenced expression [2,3]. Other clusters occur in gene promoters.

DNA methylation patterns are reset during early embryogenesis, allowing for tissue differentiation. Thereafter, DNA methylation is thought to be conserved, albeit labile, in somatic cells, allowing the organism to adjust to changing developmental and environmental conditions [1,4,5]. DNA methylation changes have been implicated in many common chronic diseases leading to the hypothesis that environmental and age-related DNA methylation changes within individuals are involved in disease etiology [6]. Therefore, understanding how DNA methylation changes within

an individual over time may provide important links for etiological research.

Relatively few studies have examined DNA methylation changes within an individual over time and all of these studies have been conducted in adults [3,7,8]. Given the theory that many adult chronic diseases have developmental origins [9,10] and that DNA methylation may be most vulnerable to insult when it is undergoing developmental reprogramming, it has been suggested that epigenetic mechanisms might be involved in the developmental origins of health and disease [6]. Therefore, understanding how DNA methylation changes early in life could provide critical information linking prenatal exposure and subsequent disease or dysfunction. Understanding factors that predict as well as those that result from DNA methylation patterns early in life can provide clues about disease etiology. For example, previous work by Michels et al. indicates that maternal pre-pregnancy body mass index (BMI) is associated with global DNA methylation measured at birth, which is, in turn, associated with birth weight [11].

In this report, we aim to characterize how global DNA methylation changes from birth to age three within our longitudinal birth cohort study and to determine whether there are consistent predictors of DNA methylation levels measured

three years apart. Additionally, we sought to confirm the findings concerning DNA methylation, pre-pregnancy BMI and birth weight reported previously by Michels et al. Further, given the theory that DNA methylation levels may persist throughout childhood, we sought to determine whether maternal pre-pregnancy BMI is also associated with global DNA methylation measured in the offspring at three years of age.

Methods

Study Population

The Northern Manhattan Mothers and Newborns Study of the Columbia Center for Children's Environmental Health (CCCEH) is a longitudinal cohort study of African American and Dominican women who were recruited in the prenatal clinics of New York-Presbyterian Medical Center, Harlem Hospital or their satellite clinics, as previously described [12]. Eligible women were those who did not smoke or use illicit drugs, aged 18–35 at delivery, registered in the prenatal clinics by the 20th week of pregnancy, free of reported diabetes, hypertension and HIV, and had resided in the Washington Heights, Central Harlem or the South Bronx areas of New York City for at least one year. Eligible women who gave informed consent were considered 'initially enrolled'. Women who completed the prenatal questionnaire and provided maternal and/or umbilical cord blood were considered 'fully enrolled' [13]. For this study, we investigated $n = 279$ children with available data on umbilical cord blood DNA that had been isolated from total white blood cells (WBC). Among these children, 165 also had DNA from blood collected at three years of age. Participants with cord blood DNA methylation measurements were not significantly different from the underlying cohort with respect to demographic characteristics; however, among those with cord blood DNA methylation measurements, children with three year measurements had mothers with greater average weight gain during pregnancy (36.5 lbs vs. 30.9 lbs) (**Table S1 in File S1**). All study participants provided their written informed consent. In addition, the women enrolled in this study provided consent on behalf of their children, who at age 3 were too young to provide assent. This protocol and related informed consent procedure is approved by the Columbia University Medical Center Institutional Review Board.

DNA methylation

DNA isolated from umbilical cord blood leukocytes (WBC) was analyzed for global DNA methylation using the MethylampTM Global DNA Methylation Quantification Kit (Epigentek Group Inc, NY). This method quantifies the methylated fraction of DNA using an ELISA-like reaction. The proportion of methylated DNA in the full sample is determined by plotting the intensity of the optical density generated from the reaction in comparison to the linear range of a standard curve produced using a methylated DNA control. Using this assay, DNA methylation is represented as the ratio of methylated DNA per 100 nanograms (ng) of total DNA. In humans, with the exception of stem cells, which make up a very small proportion of cord blood, DNA methylation occurs exclusively at cytosine-guanine dinucleotides [14,15]. As CpG dinucleotides are underrepresented in the genome, the proportion of total DNA that would be expected to be methylated is small. Reference values provided by the manufacturer range from 0.8–3%. Samples were run in duplicate, and cord and three year samples from the same children were run on the same reaction plate to minimize the plate-to-plate variation. The average of the duplicate measures was used in analyses. In this sample, the

coefficient of variation (calculated using the method described in [16]) between replicates on the same plate was 16%.

Birth outcomes and covariates

Research workers abstracted information about birth outcomes including gestational age at delivery, birth weight, birth length, and head circumference from maternal and infant medical records after delivery. We also collected additional information about important covariates including infant sex, maternal height, pre-pregnancy weight, total gestational weight gain (weight closest to delivery minus pre-pregnancy weight), and complications of pregnancy and delivery. Standardized pre-pregnancy body mass index (BMI) categories were grouped according to the recommendations of the CDC (2011) as underweight, normal weight, overweight and obese [17], using maternal height (as measured by research workers) and pre-pregnancy weight (self-reported). Bilingual (Spanish and English) research workers administered a 45-minute questionnaire during the last trimester of pregnancy. This questionnaire included demographic information, history of active and passive smoking, and socioeconomic information related to income and education. A follow-up questionnaire at 6 months, 1, 2, and 3 years provided additional information about breast feeding duration and postnatal environmental tobacco smoke exposure (ETS). Prenatal exposure to environmental polycyclic aromatic hydrocarbons (PAH) was assessed using a backpack monitor for 48 hours during the second trimester of pregnancy, as previously described in detail [12,13]. We also used the woman's questionnaire-based report of smoking in the home at three years to account for postnatal exposure to passive smoke.

Statistical analyses

Descriptive statistics were calculated for DNA methylation in cord and three-year blood samples. Cord and three-year DNA methylation levels were initially compared statistically using Pearson's and Spearman correlation coefficients. To test the hypothesis that the difference between DNA methylation levels in cord and three-year samples from the same individuals was significantly smaller than the difference between DNA methylation levels in cord and three-year samples from different individuals, we conducted permutation analyses. More specifically, with 165 children that have both cord and three-year DNA methylation samples, we held the cord DNA methylation data intact and shuffled the three-year DNA methylation to generate cord and three-year pairing from different individuals, which we call random pairs. We repeated the permutation 10,000 times, which generated a distribution of the average difference in DNA methylation between 165 randomly paired cord and three-year samples from different children. We then compared the average difference in DNA methylation between the 165 observed cord and three-year pairs from the same individuals to the 10,000 average differences in DNA methylation between the 165 randomly paired cord and three-year samples from different individuals.

Univariate associations between demographic, socioeconomic, and other potential covariates and cord and three-year DNA methylation, respectively, were explored using Student's t-test and simple linear regression, as appropriate. In linear regressions, DNA methylation measures were natural log-transformed to meet normality assumptions. Change in DNA methylation was calculated as the absolute difference in DNA methylation from birth to three years. To further determine which factors predicted cord and three-year DNA methylation or the change in DNA methylation over time, respectively, we used multiple linear regression models where natural log-transformed DNA methyla-

tion (either cord or three-year or the change in DNA methylation) was the dependent variable. In the model where three-year natural log-transformed DNA methylation was the dependent variable, we constructed a separate model that included cord natural log-transformed DNA methylation as a covariate to determine the independent influence of other covariates on DNA methylation measured at three years. We used principal components analysis to deconstruct the variation associated with plate-to-plate variation associated with technical variability [18,19]. We then used the single factor variable that accounted for 98% of the variation across plates as a covariate in all analyses other than the cord-three year DNA methylation comparisons which were matched on plate by design.

Finally, we evaluated the relationships between cord blood DNA methylation and birth outcomes, including gestational age at delivery, birth weight, length, head circumference and ponderal index ($\text{birth weight in g}/(\text{length in cm})^3 \times 100$), a measure of body proportions at birth. Global DNA methylation measured in cord blood, an independent variable, was log transformed to stabilize the variance. Covariates were included in the birth outcome models if they were associated with the outcome in bivariate analysis with $p \leq 0.10$ and changed the beta coefficient representing the relationship between cord blood DNA methylation and each birth outcome more than 5%.

Results

The mean of cord blood DNA methylation is 1.77 ng/100 ng total DNA (1.84 ng/100 ng total DNA in the subset of participants for whom we also have DNA at three years, “subset”), **Table 1**. Compared to cord blood, average peripheral blood DNA methylation is significantly higher in the same children at age 3 (mean at 3 years: 2.72 ng/100 ng total DNA, paired t-test: $p < 0.01$). Cord and three-year DNA methylation are moderately but significantly correlated (Pearson’s $R = 0.41$ ($p < 0.001$), Spearman $R = 0.30$ ($p < 0.001$)), **Figure 1**. Cord DNA methylation is a

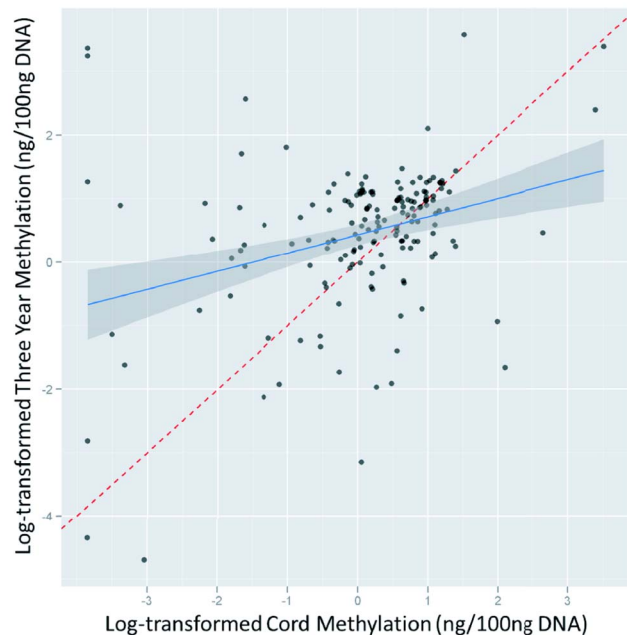


Figure 1. Association between cord and three-year DNA methylation.

doi:10.1371/journal.pone.0072824.g001

significant predictor of three-year DNA methylation ($\beta = 0.27$, $p < 0.001$ per increase in log-transformed cord DNA methylation).

The average change in DNA methylation measured in cord blood and again in blood at age three in the same individuals was 0.88 ng/100ng total DNA (standard deviation = 4.32). The range was -12.62 to 31.11 , such that two-thirds of individuals had global DNA methylation that increased from cord to three years and one-third of individuals had DNA methylation that decreased during this same time period. However, the majority of individuals (62%) had DNA methylation that changed very little (within 1 ng/100ng total DNA) from birth to age 3 while 12% had a negative change greater than 1 ng/100 ng total DNA and 27% had a positive change greater than 1 ng/100 ng total DNA). In the permutation analyses to assess whether the difference between DNA methylation levels in cord and three-year samples from the same individuals were significantly smaller than the difference between DNA methylation levels in cord and three-year samples from different individuals, we compared the 10,000 permuted mean difference from random pairs and one mean difference from the observed pairs. **Figure 2** shows the distribution of absolute mean differences in DNA methylation from the 10,000 random pairings of cord and three-year samples. The solid red bar indicates the actual mean absolute difference in DNA methylation from birth to age three from the same individual. The averaged absolute mean difference between random cord and three-year pairs over 10,000 permutations was 2.33 ng/100 ng total DNA, which was significantly greater than the observed absolute mean difference (1.81 ng/100ng total DNA, ($p < 0.01$)).

The factors that predict cord and three year DNA methylation are shown in **Tables 2 and 3**. In univariate analyses after accounting for inter-plate variation, only pre-pregnancy weight and pre-pregnancy BMI predicted lower global DNA methylation in cord blood. Pre-pregnancy BMI was inversely associated with DNA methylation (cord $p = 0.03$, subset $p < 0.01$, and three-year $p < 0.01$). When examining BMI group, women who were obese prior to pregnancy had the lowest DNA methylation (compared to women of normal weight: full $p = 0.15$, subset $p = 0.04$, and three-year $p < 0.01$).

At three years, we found that having a smoker in the home at three years was (non-significantly) associated with lower three year DNA methylation ($p = 0.08$) and having breast fed more than 3 months was (non-significantly) associated with higher three year DNA methylation ($p = 0.07$) compared with not having breast fed at all. Previously, we reported an association between prenatal PAH and lower cord blood DNA methylation [20]. Among those for whom we measured three year DNA methylation, high PAH (above the population median) was not associated with lower DNA methylation at three years.

In multiple linear regression models (**Table 4**), pre-pregnancy BMI was significantly predictive of both cord and three year DNA methylation (full $p = 0.01$, subset $p = 0.02$, three-year $p < 0.01$). Because we observed a significant positive association between cord and three year DNA methylation (**Table 1, Figures 1 and 2**), we explored whether cord blood DNA methylation was an independent predictor of three year DNA methylation or whether there is evidence indicating that it is on the causal pathway between pre-pregnancy BMI and three year DNA methylation. Adjusting for other covariates listed in **Table 4**, the beta coefficient for pre-pregnancy BMI on log-transformed DNA methylation at three years was -0.069 , with a 95% CI of -0.102 , -0.036 . After further adjusting for log-transformed cord DNA methylation, the coefficient for pre-pregnancy BMI was virtually unchanged (-0.062 , 95% CI: -0.096 , -0.029), indicating that cord methylation does not confound the observed

Table 1. Summary Statistics.

	Cord DNA Methylation (ng/100ng total DNA)		Cord DNA Methylation (subset ^a) (ng/100ng total DNA)		DNA Methylation at 3 yrs (ng/100ng total DNA)	
N	279		165		165	
Mean (SD)	1.77	(2.37)	1.84	(2.93)	2.72	(4.58)
Geometric mean	1.13	(3.14)	1.13	(3.60)	1.55	(3.19)
1 st quartile	0.84		0.72		1.14	
Median	1.34		1.27		1.94	
3 rd quartile	2.18		2.23		2.87	
Spearman R (p-value)					0.30	(<0.01)
Pearson's R (p-value)					0.41	(<0.01)

Summary Statistics, where subset refers to those with both cord and three year DNA methylation measures available.

^aThe 'subset' includes children who have contributed both cord and three year DNA samples.

doi:10.1371/journal.pone.0072824.t001

association between pre-pregnancy BMI and three year methylation. In **Figure S1A-D in File S1**, we present the partial regression plots (reflecting the regression coefficient from the multiple linear regression models) presenting the association of pre-pregnancy BMI and DNA methylation in cord and three-year DNA. Being a former smoker and concurrent ETS exposure (defined as having a smoker in the home at three years) were also predictors of lower global DNA methylation in the offspring at three years ($p = 0.10$ and $p = 0.08$, respectively).

We explored the factors that influence the absolute value of the difference between DNA methylation measured in cord blood and DNA methylation measured in blood collected from the same children at age 3 (**Table S2 in File S1**). Pre-pregnancy BMI predicted a smaller absolute change in DNA methylation from

birth to three years. Breast feeding duration during the first year was associated with a larger absolute change in DNA methylation.

In **Table 5**, we present the univariate and adjusted association between cord DNA methylation and birth outcomes including gestational age, birth weight, birth length, ponderal index, and head circumference. In no case was cord DNA methylation significantly associated with any of these birth outcomes, either before or after adjusting for possible confounders.

Discussion

The goals of this analysis were three-fold. First, we explored the relationship between global DNA methylation measured in the same children at birth (cord blood) and again at three years of age. We found that on average, DNA methylation was significantly higher in blood at age 3 years than in cord blood. However, for any individual child, the difference was less than would be expected by chance. Second, we explored the factors that predict global DNA methylation at birth and three years. We found that pre-pregnancy BMI was negatively predictive of both cord and three-year DNA methylation, even after statistical adjustment to account for the correlation between cord blood and three-year DNA methylation. Finally, we examined whether global DNA methylation in cord blood is a risk factor for adverse birth outcomes. We did not find any evidence that cord blood DNA methylation was associated (either positively or negatively) with birth outcomes.

Changes in epigenetic marks have been proposed to be a biologic mechanism by which exposures affect health and disease across the life course [6]. Generally, epigenetic marks are thought to be conserved and perpetuated in daughter cells, thereby predisposing cells towards an altered gene expression when the affected genes are developmentally signaled [21]. However, there may be some alterations in epigenetic marks that are more transient. If these changes occur during developmentally important periods, they may trigger a biologic cascade thereby influencing downstream health. Thus far, there has been little documentation characterizing the persistent or transient nature of DNA methylation during early child development.

Because global DNA hypomethylation is a hallmark of many age-related diseases [22–24] a number of studies have examined changes in DNA methylation over time in older populations [3,7,8]. Bollati et al. reported a gradual decrease in DNA methylation of Alu (but not LINE-1) measured in WBC by pyrosequencing repetitive elements assessed an average of 8 years

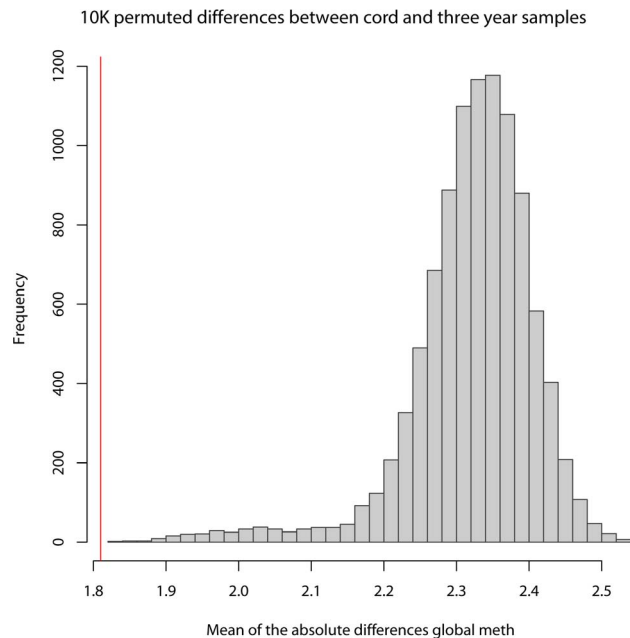


Figure 2. Permutation analysis. Gray histogram depicts the distribution of absolute mean differences in DNA methylation from the 10,000 random pairings of cord and three-year samples. The solid red bar indicates the actual mean absolute difference in DNA methylation from birth to age three in the same individual.
doi:10.1371/journal.pone.0072824.g002

Table 2. Univariate ^a Predictors of Cord and Three Year DNA Methylation (categorical).

	Cord DNA Methylation (ng/100ng total DNA)				Cord and Three Year DNA Methylation (ng/100ng total DNA)					
	N	%	Mean	SD	Cord (subset) ^b		Three Year			
					N	%	Mean	SD	Mean	SD
Maternal Education										
<HS	100	36.0	1.03	1.12	55	33.3	0.90	1.17	1.48	1.16
HS	96	34.5	1.17	1.12	67	40.6	1.18	1.15	1.87	1.15
>HS	82	29.5	1.20	1.13	43	26.1	1.00	1.20	1.22	1.19
Marital Status										
Married/Cohab.	206	75.2	1.04	1.15	119	73.0	0.94	1.19	1.56	1.19
Unmarried	68	24.8	1.15	1.08	44	27.0	1.05	1.11	1.52	1.11
Material Hardship										
No	159	57.0	1.07	1.09	93	56.4	0.97	1.13	1.60	1.12
Yes	120	43.0	1.21	1.11	72	43.6	1.13	1.15	1.48	1.14
Public Assistance										
No	23	8.3	1.14	1.26	10	6.1	1.60	1.45	1.58	1.43
Yes	255	91.7	1.12	1.07	155	93.9	1.00	1.10	1.54	1.09
Ethnicity										
Dominican	193	69.2	1.16	1.08	111	67.3	1.06	1.12	1.68	1.11
African American	86	30.8	1.06	1.13	54	32.7	0.98	1.17	1.30	1.17
BMI										
Underweight	14	5.0	1.19	1.35	9	5.5	1.05	1.47	1.49	1.43
Normal weight	125	44.8	1.28	1.10	74	44.8	1.31	1.14	2.01	1.13
Overweight	62	22.2	0.97	1.15	40	24.2	0.84	1.20	1.85	1.18
Obese	78	28.0	1.02	1.13	42	25.5	0.82	1.20	0.83	1.18
Nulliparous										
No	137	49.5	1.21	1.10	79	48.17	1.16	1.14	1.68	1.14
Yes	140	50.5	1.04	1.10	85	51.83	0.91	1.14	1.42	1.13
Former smoker										
No	212	81.9	1.12	1.08	126	82.9	1.07	1.11	1.78	1.11
Yes	47	18.1	1.18	1.18	26	17.1	0.85	1.26	1.00	1.25
ETS										
No	181	66.1	1.11	1.09	104	64.2	0.99	1.12	1.63	1.12
Yes	93	33.9	1.15	1.12	58	35.8	1.12	1.17	1.46	1.16
Sex										
Male	130	46.6	1.14	1.10	78	47.3	0.96	1.14	1.50	1.14
Female	149	53.4	1.12	1.10	87	52.7	1.10	1.13	1.59	1.13

Univariate ^a Categorical Predictors of Cord and Three Year DNA Methylation, geometric mean and SD.

^aAnalyses corrected for inter-plate variation.

^bThe 'subset' includes children who have contributed both cord and three year DNA samples.

Abbreviations: Yr (year); HS (High School); BMI (Body Mass Index); ETS (Environmental Tobacco Smoke).

doi:10.1371/journal.pone.0072824.t002

apart among men between the ages of 55 and 92. These changes over time were noted to be small relative to the inter-individual variability of global DNA methylation [3]. Bjornnson et al. studied individuals aged 69–96 whose global DNA methylation was measured in WBC 11 years apart. They found that average DNA methylation was equally likely to increase or decrease. Among approximately one third of the individuals studied, DNA methylation changed more than 10%. Using a different population of individuals clustered within families whose WBC global DNA methylation was measured twice over an average of 16 years,

Bjornnson et al. showed that DNA methylation change over time tended to cluster within families not necessarily living in the same household. These data suggest that global DNA methylation maintenance is a heritable trait [7]. Wu et al. described global DNA methylation in peripheral blood mononuclear cells (a subset of total WBC) measured three ways (LUMA, LINE-1 by pyrosequencing and Sat2 by methylite) in adults at two time points 8.6 years apart. Using LUMA, the results were similar to those of Bjornnson et al.; approximately 30% had DNA methylation changes greater than 10% compared to 60% using

Table 3. Univariate^a Predictors of Cord and Three Year DNA Methylation (continuous).

	Cord DNA Methylation (ng/100ng total DNA)			Cord DNA Methylation (subset) ^b (ng/100ng total DNA)			Three Yr DNA Methylation (ng/100ng total DNA)		
	N	Statistical estimate	p-value	N	Statistical estimate	p-value	Statistical estimate	p-value	Statistical estimate
Maternal Ht	277	beta	-0.003	0.889	beta	0.020	0.487	-0.035	0.194
		rho	-0.018	0.770	rho	0.045	0.570	-0.066	0.400
Pre-preg. Wt.	270	beta	-0.004	0.018	beta	-0.005	0.055	-0.009	0.000
		rho	-0.125	0.040	rho	-0.199	0.012	-0.315	0.000
Pre-preg. BMI	269	beta	-0.023	0.029	beta	-0.033	0.027	-0.049	0.000
		rho	-0.124	0.043	rho	-0.234	0.003	-0.293	0.000
Weight gain	252	beta	0.003	0.433	beta	0.007	0.265	0.000	0.986
		rho	0.050	0.434	rho	0.037	0.651	-0.086	0.293
Maternal age	279	beta	-0.005	0.743	beta	-0.023	0.229	-0.038	0.040
		rho	-0.040	0.502	rho	-0.184	0.018	-0.176	0.023
Total PAH	268	beta	0.076	0.361	beta	0.080	0.524	-0.067	0.576
		rho	-0.03	0.66	rho	0.076	0.344	-0.095	0.235

Univariate^a Continuous Predictors of Log-transformed Cord and Three Year DNA Methylation, Beta and Correlation Coefficients.

^aRegression analyses corrected for inter-plate variation.

^bThe 'subset' includes children who have contributed both cord and three year DNA samples.

Abbreviations: Yr (year); Ht (height); Wt (weight); BMI (Body Mass Index); PAH (Polycyclic Aromatic Hydrocarbons).

doi:10.1371/journal.pone.0072824.t003

Table 4. Multivariate^a Predictors of Cord and Three Year DNA Methylation.

	Cord DNA methylation (N = 237) (ng/100ng total DNA)		Cord DNA methylation (subset) (n = 139) ^b (ng/100ng total DNA)		Three year DNA methylation (n = 139) (ng/100ng total DNA)		Three year DNA methylation, adj for cord methylation (N = 139) (ng/100ng total DNA)	
	Beta	95% CI	Beta	95% CI	Beta	95% CI	Beta	95% CI
Maternal Education								
HS (vs. no HS)	0.103	-0.291, 0.496	0.301	-0.196, 0.798	0.033	-0.412, 0.478	-0.005	-0.448, 0.439
>HS (vs. no HS)	0.090	-0.328, 0.509	0.077	-0.498, 0.652	-0.281	-0.795, 0.233	-0.299	-0.809, 0.211
Married (vs. unmarried)								
	-0.190	-0.604, 0.224	-0.275	-0.836, 0.287	0.135	-0.368, 0.638	0.163	-0.336, 0.663
Material Hardship								
	0.094	-0.234, 0.421	0.091	-0.349, 0.530	-0.191	-0.584, 0.202	-0.199	-0.589, 0.191
Afr. Am. (vs. Dominican)								
	-0.030	-0.395, 0.334	0.052	-0.473, 0.576	-0.052	-0.532, 0.427	-0.073	-0.549, 0.402
Prenatal ETS								
	-0.068	-0.435, 0.298	0.046	-0.458, 0.549	0.247	-0.239, 0.733	0.215	-0.268, 0.698
Former smoker								
	0.010	-0.355, 0.374	-0.304	-0.829, 0.220	-0.470	-0.949, 0.009	-0.437	-0.913, 0.038
Male (vs. female)								
	-0.036	-0.356, 0.284	-0.280	-0.708, 0.148	-0.265	-0.650, 0.120	-0.227	-0.611, 0.158
Multiparous (vs. nulliparous)								
	-0.060	-0.435, 0.314	-0.020	-0.543, 0.503	0.099	-0.365, 0.564	0.107	-0.354, 0.568
Pre-pregnancy BMI								
	-0.035	-0.062, -0.007	-0.044	-0.081, -0.008	-0.069	-0.102, -0.036	-0.062	-0.096, -0.029
Weight Gain								
	0.000	-0.010, 0.011	0.003	-0.012, 0.018	-0.010	-0.023, 0.004	-0.010	-0.023, 0.004
Maternal Age								
	-0.011	-0.053, 0.031	-0.032	-0.087, 0.024	-0.044	-0.094, 0.006	-0.038	-0.088, 0.013
Total PAH (log-adj)								
	0.085	-0.113, 0.282	0.070	-0.231, 0.370	0.137	-0.133, 0.407	0.124	-0.145, 0.392
Breast Fed								
					0.008	-0.012, 0.027	0.006	-0.014, 0.025
ETS at 3 yrs								
					-0.551	-1.072, -0.030	-0.470	-0.994, 0.055
Cord								
DNA methylation								
R²	0.0979		0.274		0.304		0.146	
Adjusted R²	0.0363		0.188		0.207		0.322	
							0.221	

Multivariate^a Predictors of Cord and Three Year DNA Methylation.

^aAll multivariate models corrected for inter-plate variation.

^bThe 'subset' includes children who have contributed both cord and three year DNA samples.

Abbreviations: adj (adjusted); HS (high school); Afr. Am. (African-American); ETS (Environmental Tobacco Smoke); BMI (Body Mass Index); PAH (Polycyclic Aromatic Hydrocarbons).
doi:10.1371/journal.pone.0072824.t004

Table 5. Association with Birth Outcomes ^a.

	N	Model 1 ^b			Model 2 ^c			Model 3 ^d		
		Beta	95% CI		Beta	95% CI		Beta	95% CI	
Gestational Age	252	0.020	−0.114, 0.154		0.025	−0.109, 0.159		0.022	−0.113, 0.156	
Birth Weight	249	−36.736	−80.868, 7.396		−25.679	−69.404, 18.047		−28.452	−72.064, 15.161	
Birth Length	236	−0.008	−0.306, 0.290		0.048	−0.250, 0.346		0.049	−0.248, 0.347	
Ponderal Index	237	−0.213	−0.643, 0.217		−0.283	−0.695, 0.130		−0.274	−0.688, 0.140	
Head Circumference^e	230	−0.154	−0.296, −0.012		−0.120	−0.256, 0.016		−0.128	−0.263, 0.006	

Cord DNA Methylation (ng/100ng total DNA) and Birth Outcomes ^a.

^aAll multivariate models corrected for inter-plate variation.

^bModel 1 adjusted for gestational age (except in the model where gestational age is the dependent variable) and plate.

^cModel 2 adjusted for covariates in Model 1 plus maternal height, pre-pregnancy BMI, maternal age at delivery, ethnicity, sex, and public assistance.

^dModel 3 adjusted for covariates in Model 2 plus total Polycyclic Aromatic Hydrocarbons and Environmental Tobacco Smoke.

^eDelivery mode added to all models where head circumference is the dependent variable.

doi:10.1371/journal.pone.0072824.t005

Sat2 and 4% using Line-1 [8]. While all of these analytic methods are considered surrogate measures of global DNA methylation, each measures a different underlying biologic construct, which may explain the discrepant findings.

Here, we report changes in global DNA methylation measured at birth and age three. This is an important life stage to examine, as DNA methylation marks may be programmed during development – a fluid process that does not end at birth – and maintained thereafter. Because much of development, including tissue differentiation, is epigenetically driven [21], factors that influence epigenetic marks and potential plasticity during this period of flux may be especially important. The significant relation of maternal pre-pregnancy BMI and maternal age at delivery to DNA methylation at birth and at three years may be an example of this phenomenon. In addition, it is known that the composition of lymphocytes differs between cord and peripheral blood [25] and DNA methylation differs by cell type [8]. On average, the majority of leukocytes at birth are neutrophils (61%), followed by lymphocytes (31%), monocytes (6%), and eosinophils (2%). At age 2–4 years, the lymphocytes dominate (50–59%), followed by neutrophils (33–42%), monocytes (5%), and eosinophils (2%) [26]. A recent report by Reinius et al. indicates that methylation at CpG sites measured on the Illumina Infinium Human Methylation 450K chip tend to differ by cell lineage [27]. However, only a quarter of the CpG sites represented on the Infinium array represent intragenic regions [28]. Because the majority of methylated CpG sites are located in intergenic regions to silence transposable, repetitive elements, it is not clear that cell-specific changes in DNA methylation on CpG sites located in promoters or gene bodies would have a profound impact on a measure of global DNA methylation [2]. It may be reasonable to speculate that intergenic regions would be preferentially silenced irrespective of cell type. However, because DNA methylation in this study was measured in total blood leukocytes (WBC), we cannot rule out the possibility that the compositional change from birth to three years may explain the average increase in DNA methylation we observed. Unfortunately, differential blood counts were not available in this study to further explore this issue. The intra-individual change in DNA methylation between birth and three years that we observed was, overall, fairly small compared to the inter-individual differences. Similar to the report by Wu et al., the higher the DNA methylation level we observed at baseline (i.e., at birth), the smaller the change in DNA methylation measured at three years.

The observed protracted relation of pre-pregnancy BMI to global DNA methylation measured in both cord and three-year blood in the offspring is of particular note. A sub-optimal intrauterine environment resulting from maternal obesity could predispose the newborn infant and child to a variety of adverse health outcomes [29,30]. Obesity constitutes a chronic state of low-grade inflammation, which is a critical risk factor for insulin resistance and other metabolic disorders [31]. Additionally, maternal obesity is likely to be related, at least in part, to maternal nutritional factors. Both chronic inflammation [32] and maternal nutrition [33] have been associated with changes in epigenetic markers. Currently, it is not known how maternal obesity prior to pregnancy may change DNA methylation in the offspring and it is also not known whether or what type of risk this change confers on the health of the offspring over his/her life course. We observed associations between pre-pregnancy BMI and DNA methylation at three years that occurred independently of the apparent maintenance of DNA methylation.

The World Health Organization has estimated that one third of U.S. women of reproductive age (20 to 44 years) are obese [34] and obesity rates assessed at the start of pregnancy in the Pregnancy Risk Assessment Monitoring System (PRAMS) have increased 70% from 1993 to 2003 [35]. Given the prevalence of pre-pregnancy obesity and its apparent association with epigenetic modification at birth and during childhood, additional research confirming this association and understanding the health effects conferred are warranted.

In contrast to the report by Michels et al. [11], we did not find an association between global DNA methylation measured in cord blood and birth weight (or any other birth outcome). A number of differences in study design may account for the discordant findings – most notably, the method used to assess global DNA methylation. Michels et al. estimated global DNA methylation using LINE-1 by pyrosequencing in contrast to our immunoprecipitation-based assay. As Wu et al. demonstrated [8], not all measures of global DNA methylation estimate the same biologic construct, despite the fact that they purport to estimate global DNA methylation. Differences in the method used to approximate global DNA methylation may alone account for differences in the associations observed. Additionally, Michels et al. characterized birth weight using standardized categories for low (<2500g) and high (>4000g) birth weight. In this sample, we do not have enough children falling in these categories to analyze our data in a similar fashion. Birth weight, itself, is not a mechanism but rather a

biomarker representing, among other things, the degree of restriction of the intrauterine environment [36]. If DNA methylation and birth weight are related, it may only be evident when comparing categorical extremes. Finally, covariates included in the final models may account for differences in the conclusions. For example, we included pre-pregnancy BMI as a likely confounder whereas the Michels et al. analysis of birth weight did not [11].

There are a few aspects of our study that warrant a cautious interpretation of the findings. It is possible that underlying health conditions present at the time the blood sample was collected might influence the cellular constituency of the blood, influencing DNA methylation measured; however, these conditions (e.g., infection) are likely to be random rather than systematic. It should also be noted that variation in DNA methylation between birth and three years is likely a function of heritability as well as additional exposures occurring during these early years of life. While we were able to evaluate the impact of some of the non-heritable factors (e.g., exposure to smoke in the home, breast feeding), there are many postnatal exposures that we were not able to measure; whether any of these exposures confound observed associations is not known. Additionally, our pre-pregnancy maternal weight and height measures were self-reported, which may result in under-estimating weight and BMI and over-estimating height [37]. This potential misclassification is unlikely to be related to global DNA methylation levels (which are unknown to the study participants) therefore biasing the results to the null. Finally, global DNA methylation is an informative but limited biomarker whose clinical interpretation is not fully understood. It provides no indication of which genes are impacted, limiting our ability to interpret or predict potentially related health consequences.

Conclusion

Global DNA methylation is a non-specific biomarker that is a broad indicator of early biological changes that may affect an

array of functions in the offspring. The biologic implications of small changes in global DNA methylation are unknown. However, the observation that global DNA methylation levels persist within an individual from birth to age three supports the belief that factors that influence global DNA methylation may confer long-term effects. Therefore, the effect of these factors (including pre-pregnancy BMI) on global DNA methylation at birth and at three years deserves further study. Specifically, examining the DNA methylation of specific genes or regions of the genome that are influenced by pre-pregnancy BMI could contribute to the development of hypotheses about how the offspring of overweight women may be affected across the life course.

Supporting Information

File S1 Contains: Table S1 Comparison of those with and without cord DNA methylation and with and without three year DNA methylation. **Table S2** Factors predicting absolute value of the change in DNA methylation over time (change = $|\log\text{-three year meth} - \log\text{-cord meth}|$). **Figure S1 A–D:** Partial regression plots from multiple regression analysis that test the association between DNA methylation (cord or three year, as indicated) and pre-pregnancy maternal body mass index (BMI). (DOCX)

Acknowledgments

The authors would like to acknowledge the contribution of Dr. Deguang Zhu, who helped design and conduct the DNA methylation assay.

Author Contributions

Conceived and designed the experiments: JBH FPP DT. Performed the experiments: LQ DT. Analyzed the data: JBH SW. Contributed reagents/materials/analysis tools: DT. Wrote the paper: JBH SW FPP SALJV AGR LAH DT.

References

- Jirtle RL, Skinner MK (2007) Environmental epigenomics and disease susceptibility. *Nature reviews Genetics* 8: 253–262.
- Fazzari MJ, Grealley JM (2004) Epigenomics: beyond CpG islands. *Nature reviews Genetics* 5: 446–455.
- Bollati V, Schwartz J, Wright R, Litonjua A, Tarantini L, et al. (2009) Decline in genomic DNA methylation through aging in a cohort of elderly subjects. *Mech Ageing Dev* 130: 234–239.
- Aguilera O, Fernandez AF, Munoz A, Fraga MF (2010) Epigenetics and environment: a complex relationship. *Journal of applied physiology* 109: 243–251.
- Meaney MJ (2010) Epigenetics and the biological definition of gene x environment interactions. *Child development* 81: 41–79.
- Waterland RA, Michels KB (2007) Epigenetic epidemiology of the developmental origins hypothesis. *Annual review of nutrition* 27: 363–388.
- Bjornsson HT, Sigurdsson MI, Fallin MD, Irizarry RA, Aspelund T, et al. (2008) Intra-individual change over time in DNA methylation with familial clustering. *JAMA* 299: 2877–2883.
- Wu HC, Wang Q, Delgado-Cruzata L, Santella RM, Terry MB (2012) Genomic Methylation Changes Over Time in Peripheral Blood Mononuclear Cell DNA: Differences by Assay Type and Baseline Values. *Cancer epidemiology, biomarkers & prevention: a publication of the American Association for Cancer Research, cosponsored by the American Society of Preventive Oncology* 21: 1314–1318.
- Barker DJ (1995) Fetal origins of coronary heart disease. *BMJ* 311: 171–174.
- Gluckman PD, Hanson MA (2004) Developmental origins of disease paradigm: a mechanistic and evolutionary perspective. *Pediatric research* 56: 311–317.
- Michels KB, Harris HR, Barault L (2011) Birthweight, maternal weight trajectories and global DNA methylation of LINE-1 repetitive elements. *PLoS One* 6: e25254.
- Whyatt RM, Camann DE, Kinney PL, Reyes A, Ramirez J, et al. (2002) Residential pesticide use during pregnancy among a cohort of urban minority women. *Environmental health perspectives* 110: 507–514.
- Perera FP, Rauh V, Tsai WY, Kinney P, Camann D, et al. (2003) Effects of transplacental exposure to environmental pollutants on birth outcomes in a multiethnic population. *Environmental health perspectives* 111: 201–205.
- Lister R, Pelizzola M, Dowen RH, Hawkins RD, Hon G, et al. (2009) Human DNA methylomes at base resolution show widespread epigenomic differences. *Nature* 462: 315–322.
- Pranke P, Failace RR, Allebrandt WF, Steibel G, Schmidt F, et al. (2001) Hematologic and immunophenotypic characterization of human umbilical cord blood. *Acta haematologica* 105: 71–76.
- Reed GF, Lynn F, Meade BD (2002) Use of coefficient of variation in assessing variability of quantitative assays. *Clinical and diagnostic laboratory immunology* 9: 1235–1239.
- CDC (2011) Body Mass Index. In: *Prevention CfDCA*, editor. Atlanta.
- Alter O, Brown PO, Botstein D (2000) Singular value decomposition for genome-wide expression data processing and modeling. *Proc Natl Acad Sci U S A* 97: 10101–10106.
- Leek JT, Scharpf RB, Bravo HC, Simcha D, Langmead B, et al. (2010) Tackling the widespread and critical impact of batch effects in high-throughput data. *Nat Rev Genet* 11: 733–739.
- Herbstman JB, Tang D, Zhu D, Qu L, Sjodin A, et al. (2012) Prenatal exposure to polycyclic aromatic hydrocarbons, benzo[a]pyrene-DNA adducts, and genomic DNA methylation in cord blood. *Environ Health Perspect* 120: 733–738.
- Reik W (2007) Stability and flexibility of epigenetic gene regulation in mammalian development. *Nature* 447: 425–432.
- Hoal-van Helden EG, van Helden PD (1989) Age-related methylation changes in DNA may reflect the proliferative potential of organs. *Mutat Res* 219: 263–266.
- Wilson VL, Jones PA (1983) DNA methylation decreases in aging but not in immortal cells. *Science* 220: 1055–1057.
- Wilson VL, Smith RA, Ma S, Cutler RG (1987) Genomic 5-methyldeoxycytidine decreases with age. *J Biol Chem* 262: 9948–9951.
- Lopez MC, Palmer BE, Lawrence DA (2009) Phenotypic differences between cord blood and adult peripheral blood. *Cytometry B Clin Cytom* 76: 37–46.

26. Orkin SH ND, Ginsburg D, Look AT, Fisher DE, Lux SE (2009) Nathan and Oski's Hematology of Infancy and Childhood. PhiladelphiaPA: Saunders Elsevier. 1841 p.
27. Reinius LE, Acevedo N, Joerink M, Pershagen G, Dahlen SE, et al. (2012) Differential DNA methylation in purified human blood cells: implications for cell lineage and studies on disease susceptibility. *PLoS One* 7: e41361.
28. Dedeurwaerder S, Defrance M, Calonne E, Denis H, Sotiriou C, et al. (2011) Evaluation of the Infinium Methylation 450K technology. *Epigenomics* 3: 771–784.
29. Hesehurst N, Simpson H, Ells IJ, Rankin J, Wilkinson J, et al. (2008) The impact of maternal BMI status on pregnancy outcomes with immediate short-term obstetric resource implications: a meta-analysis. *Obes Rev* 9: 635–683.
30. McMillen IC, Robinson JS (2005) Developmental origins of the metabolic syndrome: prediction, plasticity, and programming. *Physiol Rev* 85: 571–633.
31. Huda SS, Brodie LE, Sattar N (2010) Obesity in pregnancy: prevalence and metabolic consequences. *Semin Fetal Neonatal Med* 15: 70–76.
32. Shanmugam MK, Sethi G (2012) Role of epigenetics in inflammation-associated diseases. *Subcell Biochem* 61: 627–657.
33. Waterland RA, Jirtle RL (2003) Transposable elements: targets for early nutritional effects on epigenetic gene regulation. *Molecular and cellular biology* 23: 5293–5300.
34. Organization WH (2009) Global database on body mass index. Geneva: WHO.
35. Kim SY, Dietz PM, England L, Morrow B, Callaghan WM (2007) Trends in pre-pregnancy obesity in nine states, 1993–2003. *Obesity (Silver Spring)* 15: 986–993.
36. Lillycrop KA, Burdge GC (2011) Epigenetic changes in early life and future risk of obesity. *Int J Obes (Lond)* 35: 72–83.
37. Gorber SC, Tremblay M, Moher D, Gorber B (2007) A comparison of direct vs. self-report measures for assessing height, weight and body mass index: a systematic review. *Obes Rev* 8: 307–326.