



OPEN

Volumetric MRI is a promising outcome measure of muscle reinnervation

Matthew Wilcox^{1,2,3,7}✉, Liane Dos Santos Canas⁴, Rikin Hargunani⁵, Tom Tidswell⁶, Hazel Brown^{1,2}, Marc Modat⁴, James B. Phillips^{2,3}, Sebastien Ourselin⁴ & Tom Quick^{1,2}

The development of outcome measures that can track the recovery of reinnervated muscle would benefit the clinical investigation of new therapies which hope to enhance peripheral nerve repair. The primary objective of this study was to assess the validity of volumetric Magnetic Resonance Imaging (MRI) as an outcome measure of muscle reinnervation by testing its reproducibility, responsiveness and relationship with clinical indices of muscular function. Over a 3-year period 25 patients who underwent nerve transfer to reinnervate elbow flexor muscles were assessed using intramuscular electromyography (EMG) and MRI (median post-operative assessment time of 258 days, ranging from 86 days pre-operatively to 1698 days post-operatively). Muscle power (Medical Research Council (MRC) grade) and Stanmore Percentage of Normal Elbow Assessment (SPONEA) assessment was also recorded for all patients. Sub-analysis of peak volitional force (PVF), muscular fatigue and co-contraction was performed in those patients with MRC > 3. The responsiveness of each parameter was compared using Pearson or Spearman correlation. A Hierarchical Gaussian Process (HGP) was implemented to determine the ability of volumetric MRI measurements to predict the recovery of muscular function. Reinnervated muscle volume per unit Body Mass Index (BMI) demonstrated good responsiveness ($R^2 = 0.73$, $p < 0.001$). Using the temporal and muscle volume per unit BMI data, a HGP model was able to predict MRC grade and SPONEA with a mean absolute error (MAE) of 0.73 and 1.7 respectively. Muscle volume per unit BMI demonstrated moderate to good positive correlations with patient reported impairments of reinnervated muscle; co-contraction ($R^2 = 0.63$, $p = 0.02$) and muscle fatigue ($R^2 = 0.64$, $p = 0.04$). In summary, volumetric MRI analysis of reinnervated muscle is highly reproducible, responsive to post-operative time and demonstrates correlation with clinical indices of muscle function. This encourages the view that volumetric MRI is a promising outcome measure for muscle reinnervation which will drive advancements in motor recovery therapy.

Peripheral nerve injuries (PNI) occur in around 2% of all trauma cases and represent a significant global health challenge^{1–4}. Increasing identification of regenerative therapies which enhance nerve regeneration in preclinical models drives a concomitant need for outcome measures of reinnervated muscle^{5,6}. Ideal outcome measures are reproducible, responsive to the biological process of muscle reinnervation, correlate with clinical measurements of muscular function and are non-invasive to perform⁷.

Neurophysiological assessment is widely used to diagnose nerve injuries and monitor recovery of reinnervated muscle^{8–11}. Compound Muscle Action Potential (CMAP) readings have been used as outcome measures to track disease progression in neuromuscular pathologies^{12–15}. However, it is often not possible to achieve reproducible and accurate recordings in proximal muscles such as the elbow flexors. This is because percutaneous stimulation of the entire motor point of proximal nerve trunks such as the musculocutaneous nerve trunk is challenging¹⁵. Intramuscular quantitative electromyography (EMG) including Motor Unit Action Potential (MUAP) analysis and/or semi-quantitative measurements of spontaneous activity may circumvent this issue⁹. However, this method can be uncomfortable for the patient and depends on their co-operation. Further, in

¹Peripheral Nerve Injury Research Unit, Royal National Orthopaedic Hospital, Stanmore, UK. ²UCL Centre for Nerve Engineering, University College London, London, UK. ³Department of Pharmacology, UCL School of Pharmacy, University College London, London, UK. ⁴Biomedical Engineering and Imaging Sciences, King's College London, London, UK. ⁵Department of Radiology, Royal National Orthopaedic Hospital, Stanmore, UK. ⁶Department of Clinical Neurophysiology, Royal Free Hospital, London, UK. ⁷University College London Medical School, London, UK. ✉email: matthew.wilcox.13@ucl.ac.uk

longitudinal studies it can be difficult for the examiner to relocate the same topographical area for assessment of changes in these neurophysiological parameters.

Developing improved outcome measures is important to track change in clinical trials and to identify cases where surgical intervention may offer clinical benefit. However, this is challenging in the context of human muscle reinnervation. The rate of human nerve regeneration is slow, around 1 mm/day¹⁶, therefore small incremental changes over time may be masked by environmental factors and/or measurement variation. Furthermore, the intricate and often varied anatomy in addition to diverse range of injuries make PNI a heterogeneous pathology to study. The nerve transfer to restore elbow function (the Oberlin's procedure) has been identified as a surgical scenario of human muscle reinnervation which circumvents many of these issues^{17–19}. In this procedure, the surgeon creates a controlled injury to an uninjured fascicle of the ulnar nerve and redirects these axons to grow into the denervated musculocutaneous nerve to the elbow flexor muscles.

In animal models, muscle wet weight is often utilised as an outcome measure by researchers to establish the efficacy of therapies following nerve repair and to predict functional recovery^{5,20}. Unfortunately, measurement of muscle wet weight in humans is not feasible. However, the advent of quantitative Magnetic Resonance Imaging (MRI) techniques has enabled researchers to non-invasively measure muscle volume. Assessment of the reproducibility, responsiveness and correlation with clinical metrics of muscular function would represent a key step towards validating volumetric MRI as an outcome measure of muscle reinnervation.

The clinical assessment of reinnervated muscular function is complex. Established objective assessments of muscular function are often restricted to the measurement of peak volitional force (PVF) through the Medical Research Council (MRC) grading system of muscle power and/or handheld dynamometry (HHD) measurements^{21,22}. However, recent studies of patient reported impairments have identified an earlier onset of muscular fatigue, pathological co-contraction, altered proprioception and muscle pain as central themes of chronically reinnervated muscle (> 1 year following reconstructive nerve surgery)^{18,23}.

The importance of the use of patient reported outcomes (PROs) in combination with clinical reported outcomes within both research and the clinical setting is well recognized²⁴. The authors (HB and TQ) developed the Stanmore Percentage of Normal Elbow Assessment (SPONEA)²⁵ as a PRO of muscle reinnervation by adapting a pre-existing assessment of shoulder function; the Stanmore Percentage of Normal Shoulder Assessment (SPONSA)²⁶. This tool provides a patient reported assessment of strength, range of movement, pain and the functional ability of the elbow joint following nerve transfer to reinnervate elbow flexor muscles. Ascertaining the relationship of these objective and subjective clinical assessments with volumetric MRI assessment of reinnervated muscles would represent a key step towards establishing priorities for motor recovery therapy.

The aim of this study was to establish the validity of volumetric MRI as an outcome measure of muscle reinnervation by testing its reproducibility, responsiveness and relationship with clinical indices of muscle function. The validity of volumetric MRI was compared to conventional semi-quantitative neurophysiological markers of muscle reinnervation including spontaneous activity and MUAP analysis. In order to achieve this, patients who underwent nerve transfer to reanimate elbow flexion were followed-up at a range of pre- and post-operative time points for MRI, neurophysiological and clinical assessment of their reinnervated elbow flexor muscles.

Results

Clinical features. Twenty-five patients, 23 males and two females, were included in this study with a median age of 34.5 years (ranging from 23 to 66 years). There were ten right-sided and 15 left-sided brachial plexus injuries; 14 and 11 of which were on the dominant and non-dominant side respectively. Twenty-one of the injuries were due to motorbike accidents, two were following bicycle accidents, one following a car accident and one due to a skiing accident. Intra-operatively, 22 patients were found to have C5/6 avulsion, one had a C5-8 avulsion, one had a C5-7 avulsion and one had axonotmesis of biceps branch of musculocutaneous nerve (Additional file 1). Six healthy male volunteers with a median age of 34.5 (ranging from 24 to 52) underwent MRI scans of their elbow flexor muscles on their dominant (four were right-handed and two were left-handed) side for comparison to nerve injured arms.

Neurophysiological investigation. A weak to moderate positive linear correlation was found between semi-quantitative assessment of spontaneous activity and post-operative time ($R^2=0.43$, $p=0.03$) (Supplementary Material Fig. 2A). Measurement of the magnitude of motor units (MUs) demonstrated relatively poor responsiveness to post-operative time ($R^2=0.36$, $p=0.002$) (Supplementary Material Fig. 2B).

Scan-rescan, inter- and intra-investigator reproducibility of the MRI segmentation protocol. All reproducibility measurements were carried out on healthy controls. T1-w scans yielded the highest scan-rescan (0.95 (0.50–0.93)), inter- (0.98 (0.98–1.00)) and intra-investigator (0.99 (0.98–1.00)) reproducibility of volumetric measurements out of all the imaging sequences employed in this study (Supplementary Material Fig. 3). Therefore, T1-w images were used for all volumetric assessments.

Volumetric analysis. The median Body Mass Index (BMI) of the healthy controls was 25 (ranging from 22 to 29). The mean muscle volume per unit BMI of uninjured elbow flexor muscles was 10.76 mL per unit BMI (± 1.42) (Fig. 1A,B). The volume per unit BMI of elbow flexor muscles demonstrated a strong positive linear correlation with pre- and post-operative time points ($R^2=0.73$, $p<0.001$) (Fig. 1A). A Hierarchical Gaussian Process (HGP) model was implemented to predict changes in this biomarker at pre- and post-operative time points (Fig. 1B). The HGP model was able to predict muscle volume per unit BMI at a given time point with a mean absolute error (MAE) of 0.9 mL per unit BMI and a mean Log likelihood of 0.15 (Supplementary Material

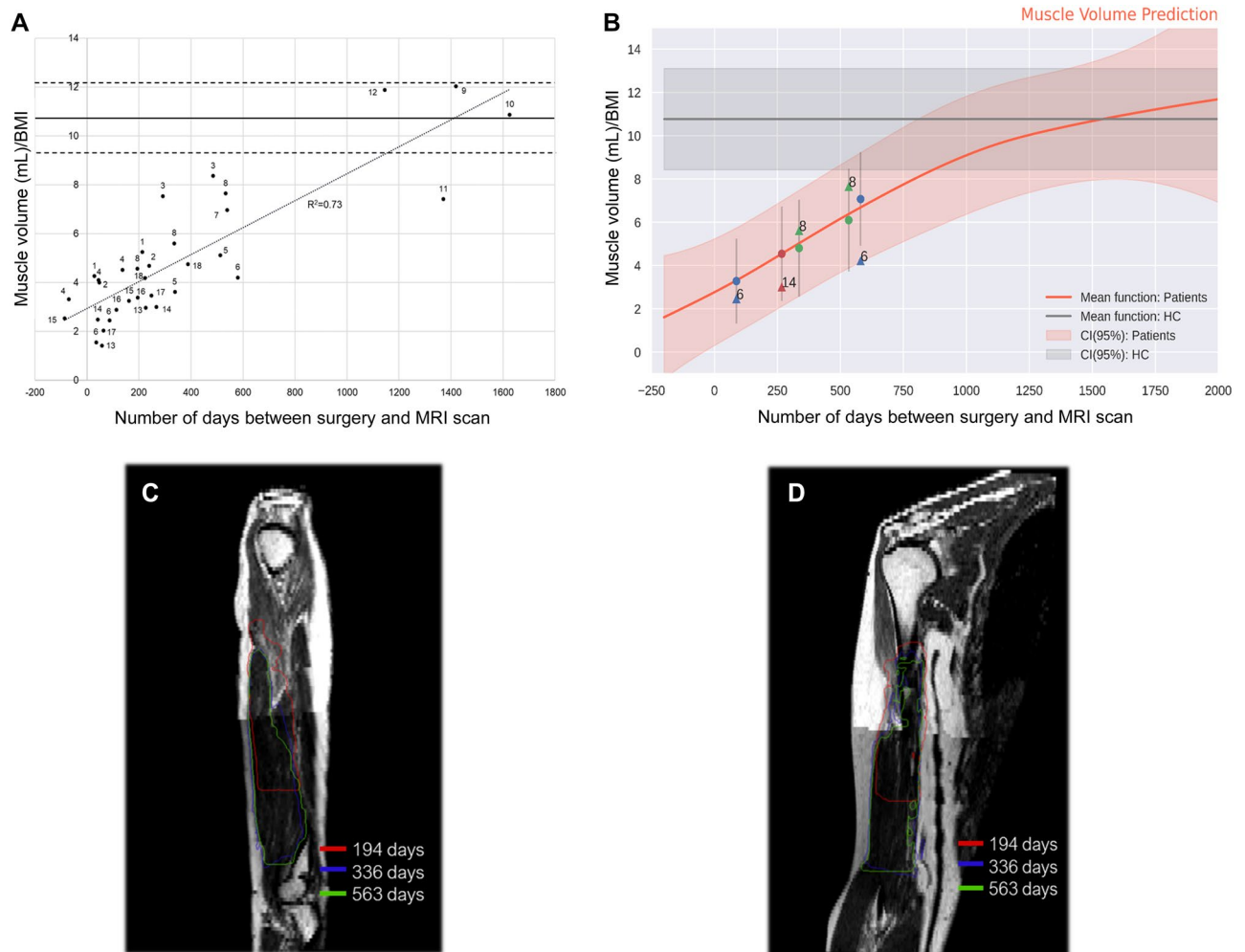


Figure 1. Changes in elbow flexor muscle volume pre- and post-nerve transfer. The numbers attached to the data points in (A, B) are in reference to the case numbers provided in Additional file 1. (A) Quantification of elbow flexor muscle volume at pre- and post-nerve transfer time points. The solid black line represents the mean uninjured elbow flexor muscle volume ($n=6$) and the dashed black lines represent \pm one standard deviation from the mean. (B) Application of a Hierarchical Gaussian Process model to the data presented in (A). The solid black line represents the mean muscle volume/BMI of uninjured elbow flexor muscles ($n=6$) and the shaded area represents one standard deviation from the mean. The circular data points represent the predicted values on the triangular points denote the actual data points. (C–E) Represents deformable registration of elbow flexor muscle segmentations from case number 8 (Additional file 1) 194, 336 and 553 days post-nerve transfer. (C) Sagittal plane. (D) Frontal plane. Supplementary Video 1 shows the 3D reconstruction video of reinnervated elbow flexor muscles of C and D.

Fig. 4). Visual representations of reinnervated elbow flexor muscle volume measurements from case number 8 (Additional file 1) post-operatively are shown in Fig. 1C–E.

Objective assessments of muscular function. *MRC grading.* Volumetric measurements directly correlated with function. An MRC grade of 0, 1, 2, 3 and 4 was associated with a mean reinnervated muscle volume per unit BMI of 2.28 (± 0.7), 3.20 (± 0.56), 3.96 (± 0.81), 4.57 (± 1.36) and 8.37 (± 2.49) respectively (Fig. 2A). Uninjured muscles (MRC grade 5) had a mean muscle volume per unit BMI of 10.76 (± 1.42) (Fig. 2A). There was a statistically significant difference ($p < 0.001$) in muscle volume per unit BMI between MRC grade four and zero, five and zero, four and one, five and one, four and two, five and two, four and three as well as five and three (Fig. 2A). Using the muscle volume per unit BMI and temporal measurements from Fig. 1B, the HGP model was used to infer objective (MRC grading) (Fig. 2B). The HGP model was able to predict MRC grade with an MAE of 0.73 and a mean Log likelihood of 0.28 (Supplementary Material Fig. 4). This means that the HGP model was able to predict within ± 1 MRC grade.

PVF measurements. The population mean force generated by reinnervated elbow muscles was 12.55KgF (± 6.75) compared to 31.51KgF (± 5.67) for uninjured arms. This was a statistically significant differential

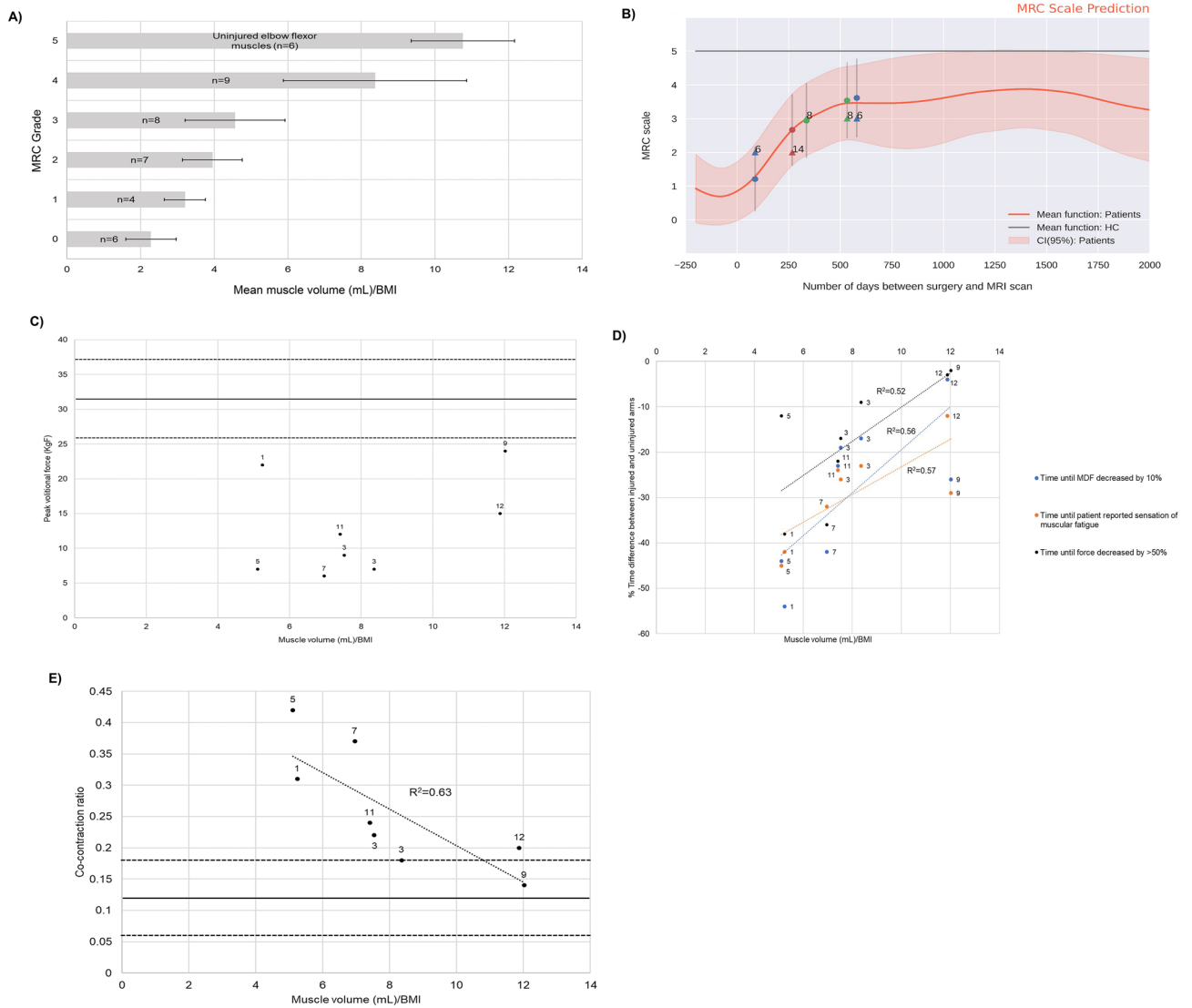


Figure 2. Relationship between muscle volume per unit BMI and objective measurements of muscular function. The error bars in (A) represent one standard deviation from the mean. In (B–E) case numbers are attached in reference to Additional file 1 which also provides details pertaining to the time interval between injury and surgery as well as surgery and clinical assessments. In (C, E), the solid black line represents the mean PVF and co-contraction ratio obtained from the uninjured contralateral arms respectively whilst the dashed lines represent one standard deviation from the mean. (A) An MRC grade of 0, 1, 2, 3 and 4 was associated with a mean reinnervated muscle volume per unit BMI of 2.28 (± 0.7), 3.20 (± 0.56), 3.96 (± 0.81), 4.57 (± 1.36) and 8.37 (± 2.49) respectively. Uninjured muscles (MRC grade 5) had a mean muscle volume per unit BMI of 10.76 (± 1.42). There was a statistically significant difference in muscle volume per unit BMI between MRC grade 4 and 0, 5 and 0, 4 and 1, 5 and 1, 4 and 2, 5 and 2, 4 and 3 as well as 5 and 3 as assessed by a one-way analysis of variance (ANOVA) and Bonferroni test. (B) Application of a Hierarchical Gaussian Process model to the data presented in (A). The circular data points represent the predicted values on the triangular points denote the actual data points. (C) The relationship between PVF and muscle volume (mL) per unit BMI. (D) The relationship between sEMG, force and subjective measurements of muscular fatigue and muscle volume (mL) per unit BMI. (E) The relationship between co-contraction and muscle volume (mL) per unit BMI.

($p < 0.0001$). No significant correlation between the recovery of PVF and muscle volume per unit BMI was found (Fig. 2C).

Muscular fatigue evaluation. sEMG. The mean Median Frequency (MDF) of injured elbow flexor muscles across the first 10 seconds of the sustained isometric contraction was 62.90Hz (± 5.89) compared to 73.13Hz (± 4.62) for uninjured arms. This was a statistically significant differential ($p = 0.0017$). The population mean time taken for this index MDF value to fall by 10% was 22.84 seconds (± 12.41) for reinnervated muscles compared to 32.10 seconds (± 9.46) for uninjured arms. This was not a statistically significant difference ($p = 0.1154$). Over-

all, the percentage difference in time taken for MDF to fall by 10% between reinnervated and uninjured arms demonstrated a significant positive linear correlation with muscle volume per unit BMI measurements ($R^2=0.56$, $p=0.03$) (Fig. 2D).

Force. The mean time until there was a 50% drop in force during the sustained isometric contraction was 32.21 seconds (± 7.14) for reinnervated elbow flexor muscles and 39.12 seconds (± 8.26) for uninjured muscles representing a non-statistically significant difference ($p=0.8312$). The percentage difference in time until there was a 50% reduction in force output during the isometric contraction between reinnervated and uninjured arms demonstrated a significant positive linear correlation with the muscle volume per unit BMI readings ($R^2=0.52$, $p=0.04$) (Fig. 2D).

Subjective. The mean time interval between the start of the isometric contraction and the onset of subjective muscular fatigue was 29.06 seconds (± 6.32) for reinnervated muscles compared to 40.87 seconds (± 13.62) for uninjured arms. This was a statistically significant differential ($p=0.0431$). The percentage difference in time taken for the onset of subjective muscular fatigue between reinnervated and uninjured arms demonstrated a significant positive linear correlation with muscle volume per unit BMI measurements ($R^2=0.57$, $p=0.04$) (Fig. 2D).

Co-contraction measurements. The population mean co-contraction ratio for the uninjured contralateral arms was 0.12 (± 0.06) compared to 0.26 (± 0.09) within reinnervated arms; a statistically significant differential ($p=0.0026$). Focusing on reinnervated arms, co-contraction ratio demonstrated a moderate to good significant negative linear correlation with muscle volume per unit BMI ($R^2=0.63$, $p=0.02$) recovering to similar levels as uninjured muscle (Fig. 2E).

Subjective assessment of muscular function. SPONEA demonstrated a strong positive linear correlation with muscle volume per unit BMI ($R^2=0.45$, $p<0.001$) (Fig. 3A). Using the muscle volume per unit BMI and temporal data from Fig. 1B, the HGP model was implemented to infer the subjective recovery of elbow flexion at different time points post-operatively (Fig. 3B). The MAE of 1.7 and mean Log likelihood of 0.15 suggests that the HGP model can predict SPONEA within two points (Supplementary Material Fig. 4).

Discussion

A major barrier to the clinical translation of new therapies to enhance peripheral nerve repair is the absence of outcome measures that are responsive and demonstrate correlation with clinical metrics of reinnervated muscular function⁵. To address this issue, a study was undertaken to determine the extent to which muscle volume relates to objective and subjective assessments of reinnervated muscle.

The current clinical standard for monitoring muscle reinnervation is intramuscular EMG⁹. However, the findings suggest that intramuscular EMG parameters have low responsiveness warranting research into improved outcome measures of muscle reinnervation.

The findings show that the segmentation protocol deployed in this study to measure elbow flexor muscle volume demonstrated excellent inter- ($ICC=0.92$ (0.80–0.97)) and intra- ($ICC=0.99$ (0.97–1.00)) investigator reproducibility⁷. This concurs with other studies that have used quantitative MRI techniques to measure biological changes associated with neuromuscular pathologies such as Charcot-Marie-Tooth disease (CMT)^{27–30}. This is important because this finding suggests volumetric MRI may be a valuable tool in multi-centre clinical trials.

The development of responsive outcome measures is critical in the context of clinical nerve repair research. Successful clinical translation of novel regenerative therapies will likely depend on the ability of outcome measures to capture small incremental changes over time³¹. Conventional clinical metrics such as MRC grading are not sufficiently sensitive to the biological process of muscle reinnervation and therefore limit the design of clinical trials of therapies which hope to enhance nerve repair^{31–33}.

Quantification of reinnervated elbow flexor muscle volume per unit BMI demonstrated improved responsiveness when compared with conventional neurophysiological indicators of muscle reinnervation. This concurs with findings in animal models of nerve repair which demonstrate that measurements of muscle mass are sensitive to the biological process of muscle reinnervation³⁴. Controlled animal models of muscle reinnervation have shown that therapies such as growth hormone^{35,36} lead to an approximately 20% higher recovery of muscle mass when compared to control. Application of this finding to the HGP modelling of the volumetric data presented in this study can inform power calculations for future clinical trials; a study which hopes to capture a 20% improvement in muscle volume with 80% power and 0.05 alpha at 180 days post-nerve transfer would require 55 patients each in the control and experimental group. Other factors such as resistance training which may form a component of physical rehabilitation following surgical nerve repair are known to correlate with volumetric assessments³⁷. Measurements of muscle mass and volume may provide improved correlation with clinical indices of muscle reinnervation compared with neurophysiological parameters since they provide a more direct assessment of the functional recovery of MUs rather than changes in the electrical properties of MUs as assessed by neurophysiological indices⁹.

Delineating the relationship of muscle volume per unit BMI with objective and subjective clinical assessments of muscular function will allow researchers to define primary endpoints in human trials.

Reinnervated muscles assigned MRC grade four demonstrated approximately double the range of muscle volume per unit BMI readings when compared to lower MRC grades. This finding reflects the well documented limitations of the MRC grading system when monitoring the functional recovery of reinnervated muscle; over 96% of MRC evaluations are determined as MRC grade 4³². However, patient reported impairments of muscle reinnervation such as muscular fatigue and co-contraction demonstrated improved correlation with muscle

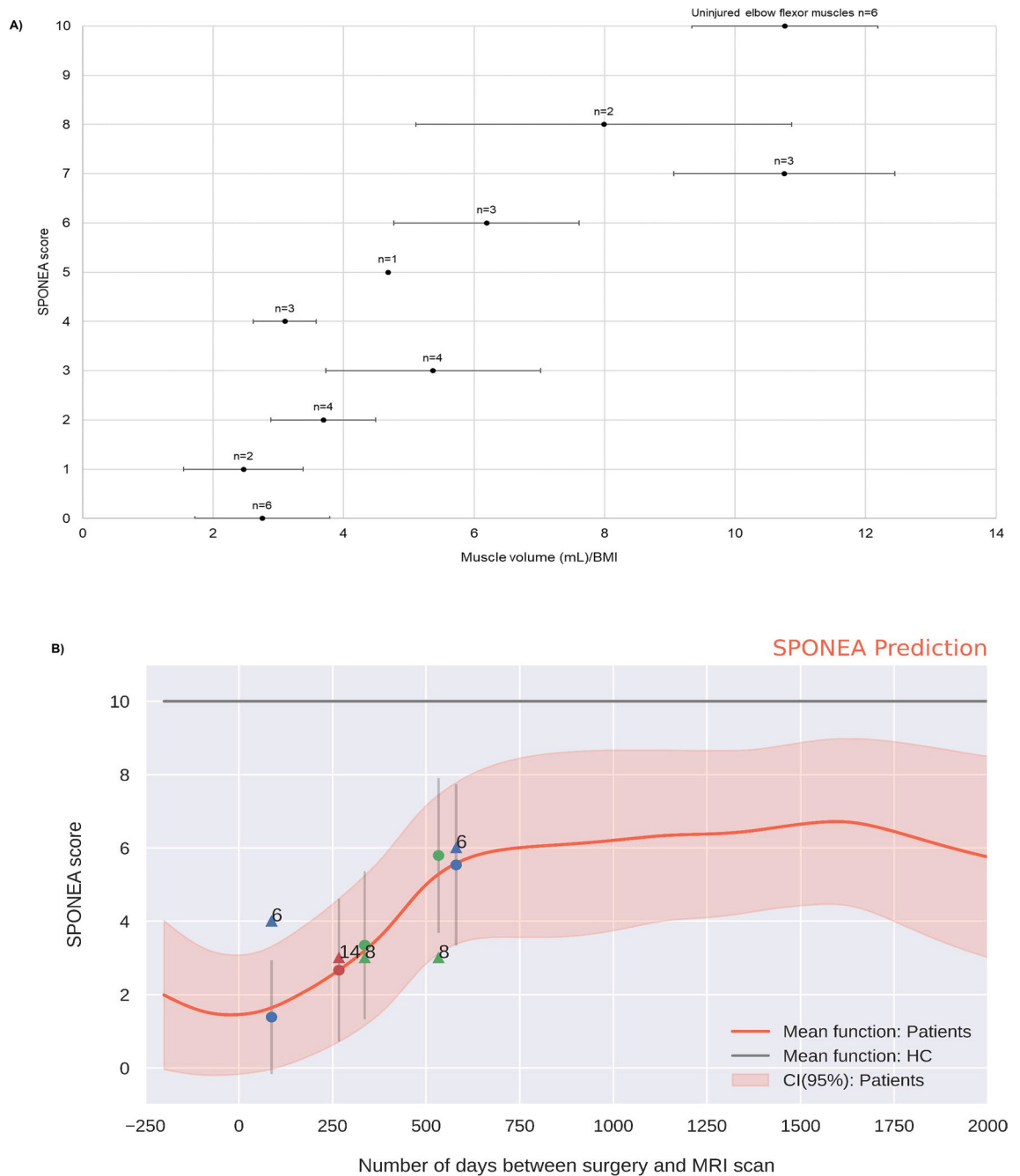


Figure 3. Relationship between muscle volume per unit BMI and SPONEA. **(A)** Relationship of the mean muscle volume per unit BMI with the SPONEA scale. The error bars represent one standard deviation. **(B)** Application of the HGP to the data presented in **(A)**. The numbers attached to the data points are in reference to the case numbers provided in Additional file 1. The circular data points represent the predicted values on the triangular points denote the actual data points.

reinnervation. This suggests that the clinical assessment of reinnervated muscular function should go beyond PVF measurement alone to better embody the recovery of afferent muscular function.

SPONEA was found to be responsive to volumetric measurements. Recent studies that have adopted percentage of normal assessment tools to appraise subjective muscular function in neuromuscular pathologies have reported similar findings^{26,30,38–40}. This encourages the view that percentage of normal assessments should be more widely adopted by clinicians as a subjective evaluation of reinnervated muscular function.

The findings of this study must be interpreted in light of its limitations. The effect of the time interval between injury and surgery was not considered. An incremental increase in time between injury and surgery leads to a tissue microenvironment that becomes increasingly antagonistic to axonal regeneration and muscle reinnervation^{41–43}. Future studies should also consider obtaining baseline, pre-operative volumetric measurements to better understand the rate of muscle volume change post-operatively. In addition, the data would have

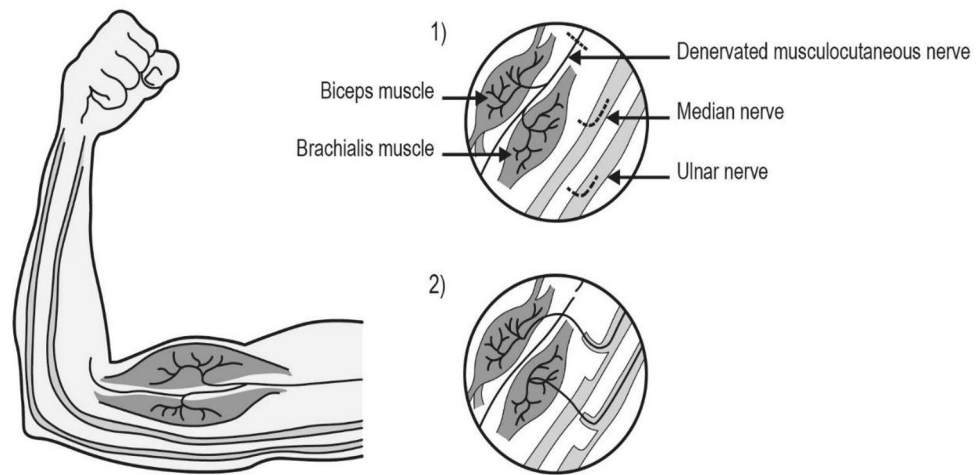


Figure 4. Nerve transfer to reanimate elbow flexion⁴³. Restoration of elbow flexion is a common challenge encountered by the reconstructive surgeon following injury to the upper cervical roots, upper trunk, lateral cord and/or musculocutaneous nerve. The surgeon performs a neurotomy in the longitudinal orientation along donor median and ulnar nerves. Using low amplitude stimulation, a fascicle (no greater than 1/8th the size of the donor nerve) that demonstrates predominantly wrist flexor activity (flexor carpi ulnaris/flexor carpi radialis) is identified. Other fascicles are subsequently stimulated to ensure that wrist flexion would be maintained following donor harvest. Fascicles that demonstrate intrinsic hand function upon stimulation are avoided. The donor median and/or ulnar fascicles are then transferred into the chronically denervated stump of the biceps branch of the musculocutaneous nerve.

benefited from standardised neurophysiological and MRI follow-up time points with a larger cohort of patients. This will help the mathematical modelling data presented in this paper better predict functional recovery before conventional markers of muscle reinnervation can determine whether nerve repair has been successful or not. By extension, this will allow earlier clinical interventions to be made before the tissue microenvironment becomes antagonistic to muscle reinnervation. This was challenging in the present study since EMG and MRI equipment was housed at different clinical locations meaning that patients had to attend multiple research appointments which may have deterred patients. Since this study was conducted at a national referral centre, patients often had to travel from far afield which may have further reduced follow-up.

Animal models have shown that females appear to exhibit faster rates of nerve repair compared to males⁴⁴. Studies which address whether this translates into differential rates of volumetric recovery in humans will help characterise the natural history of nerve repair and inform the design of clinical trials. Focusing on the HHD measurements, future studies may wish to consider modifying functional assessments such that the participant performs an isometric contraction against a fixed object rather than an investigator. This will ensure that these functional assessments measure the participant's muscular function in isolation rather than the ability of the investigator to endure the efforts of the participant. Additionally, brachial plexus injury is a relatively rare pathology which restricted the recruitment of a larger cohort of patients. There was also a shortage of data between approximately 600 and 1100 days post-operatively. In agreement with current guidelines, patients were evaluated for discharge from clinic around 2-years following nerve transfer affording challenges to the long term follow-up of these patients⁴⁵. This is characteristic of studies involving trauma with follow-up rates reported to be as low as 2%⁴⁶.

In summary, volumetric MRI demonstrates reproducibility, temporal responsiveness and correlation with clinical assessments of muscular function. This suggests volumetric MRI is an excellent candidate as an outcome measure of muscle reinnervation. Future work should establish whether volumetric MRI can capture a meaningful clinical response in clinical trials of therapies which hope to enhance human nerve repair.

Methods

This study received full ethical approval from REC reference 17/YH/0413, IRAS ID 235012, REC reference: 16/LO/0623; IRAS ID: 202847 and REC reference 17/WM/0438, IRAS ID 231428.

Surgical procedure. The nerve transfer procedure transects functioning fascicle(s) to allow the redirection and ingrowth of these axons into a denervated distal nerve to restore function. In this procedure to reinnervate the elbow flexors donor fascicles from the ulnar and/or median nerves are transferred into the denervated musculocutaneous nerve to brachialis and biceps (Fig. 4).

Participant selection. The study methodology identified both those who had recently undergone a nerve transfer and those due to undergo the procedure through a combined retrospective and prospective review of the institute database (Peripheral Nerve Injury Unit, Royal National Orthopaedic Hospital, UK). This process

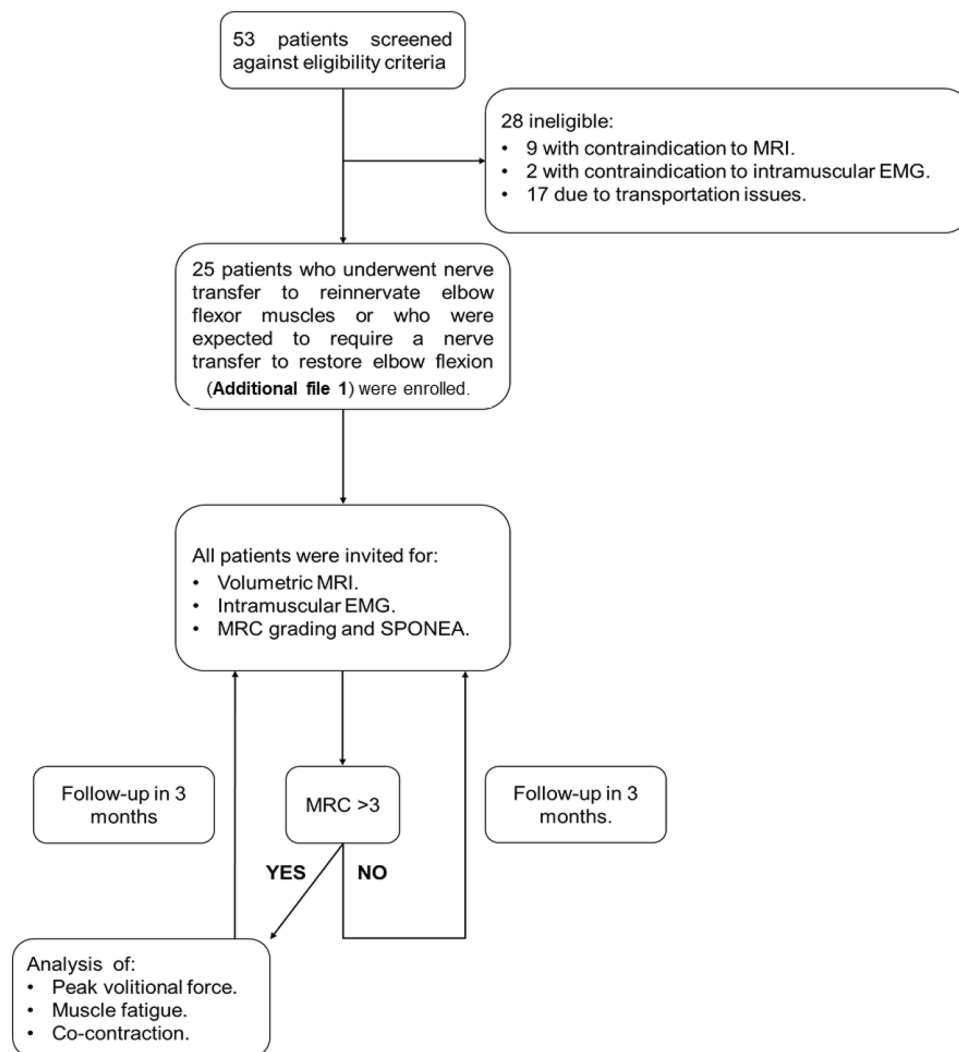


Figure 5. Study flow diagram. Flow diagram to illustrate study design and patient recruitment.

identified candidates who underwent nerve transfer to reanimate elbow flexion between August 2017 and March 2019. Patients were assessed against the following inclusion criteria: patients had to be over 18 years of age; speak fluent English; able to participate verbally with the process. Patients were excluded if they had impaired cognitive functioning or had difficulties in verbal communication and those who had suffered a birth-related brachial plexus injury. A total of 53 patients were screened against the inclusion criteria and invited to participate in the study by telephone and letter. Those who did not respond, received a follow up phone call. All patients were requested to attend MRI and neurophysiological assessment of their injured arms. Those who underwent MRI and/or neurophysiological assessment of their elbow flexor muscles were assigned an MRC grade and requested to answer the SPONEA. If patients were assigned MRC > 3 (i.e. they were able to produce force against resistance), they were also requested to participate in PVF, muscular fatigue and co-contraction assessments. Invites for additional follow-up appointments (for re-evaluation of volumetric MRI, MRC grade, intramuscular EMG and SPONEA analysis) were sent every 3 months following the previous appointment for up to 2-years post-operatively. Patients were withdrawn from the study if they no longer wished to attend additional assessments (Fig. 5).

Healthy controls were assessed against the following inclusion criteria to closely match the demographics of the study population; healthy controls had to be males aged between 18 and 60 years and must not have had any past medical history of neuromuscular disorders.

Neurophysiology; motor unit action potential (muap) and spontaneous activity analysis. EMG analysis of size index and spontaneous activity was performed by T.T. Further details on the experimental protocol used can be found in the Supplementary Material.

Imaging parameter	Coronal T1-w spin echo	Coronal STIR	Sagittal T2-w fast spin echo	Axial PDW fast spin echo	Fat suppressed PDW fast spin echo
Field of view	270 × 190 mm ²	270 × 190 mm ²	270 × 190 mm ²	200 × 200 mm ²	200 × 200 mm ²
Repetition time	643	4000	3000	3000	3000
Echo time	20	80	100	30	30
Slice thickness	3 mm	3 mm	3 mm	4 mm	4 mm
Interslice gap	0.3 mm	0.3 mm	0.3 mm	0.4 mm	0.4 mm
Matrix	364 × 225	192 × 127	320 × 201	288 × 254	288 × 274
Bandwidth	361.5	1033	291.5	331	361

Table 1. MRI Imaging parameters.

MRI acquisition. *Image acquisition.* All imaging was obtained on a 3-Tesla MRI Philips scanner (Achieva, Philips, The Netherlands) using phased array coils. All patients were imaged utilising a standardised protocol with the participant in the supine position with their arm rested by their side with the palm facing upwards (Table 1). The injured arm was imaged in all 25 patients whilst the uninjured arm was imaged for comparison in six healthy male volunteers.

Segmentation protocol to quantify elbow flexor muscle volume. The NiftyView software (<https://github.com/NifTK/NifTK>) was used to perform segmentation as well as signal intensity and volume measurements. Uninjured and injured elbow flexor muscles were manually segmented using previously documented protocols which demonstrated high reproducibility and reliability^{47–49}. Proximally, segmentation was commenced at the unification of the long and short heads of the biceps tendon. Once the distal part of the medial condyle of the humerus became visible, segmentation was terminated. To provide some standardisation for differences in elbow flexor muscle volume that may arise due to environmental factors, BMI measurements were obtained from participants at each MRI scan appointment. BMI has been shown to be positively correlated ($R^2 > 0.7$) in a number of studies with measurements of muscle volume and upper arm diameter^{50,51}. Therefore, the elbow flexor muscle volume per unit BMI was determined.

Scan-rescan, inter- and intra-investigator reproducibility of the segmentation protocol. One patient and three healthy volunteers underwent scan-rescan tests of their injured and healthy arms (on the dominant side) respectively to determine scan-rescan reproducibility of the MRI measurements. After the initial scan, participants were asked to get off the scanner table, rest for 5–10 min and then get back on to the table again for the second scan with the same imaging protocol. For the assessment of inter- and intra-investigator reproducibility assessment, the first 20 MRI scans to be acquired in the study were manually segmented by MW and a PhD student to quantify the ratio of elbow flexor muscle signal intensity to the signal intensity of the humeral shaft and the elbow flexor muscle volume per unit BMI acquired from T1-w, PDW and T2-w images. The Intraclass Correlation Coefficient (ICC) was used to quantify the scan-rescan, inter- and intra-investigator agreement of the segmentation protocol.

Objective clinical assessments of muscular function. All participants were assessed using the MRC grading system of muscle power. In those determined to have MRC grade > 3, sub-analysis of PVF, muscular fatigue and co-contraction was performed (Fig. 5). Previously published protocols, optimised for the evaluation of reinnervated elbow flexor muscles, were followed^{18,52,53} (additional information provided in the Supplementary Material). All assessments were performed in the injured and uninjured, contralateral arms. Recordings were taken by MW. Peak force and/or sEMG signals were used to provide an objective appraisal of PVF, muscular fatigue and co-contraction within these assessment models. The experimental setup is shown in Supplementary Material Fig. 1.

Quantification of peak volitional force. PVF was recorded as the maximum force exerted by the participant during the ten repeated isometric contractions of elbow flexor muscles. This was documented for the injured and uninjured, contralateral arms.

Quantification of muscular fatigue. sEMG. MDF is a frequency value at which the EMG power spectrum is divided into two regions with an equal integrated power and is a commonly used sEMG index of muscular fatigue. The time taken for the MDF to fall by > 10% from the mean MDF obtained for the first 10 s of the sustained isometric contraction was used to estimate the physiological onset of muscular fatigue. The percentage difference in this time interval between injured and uninjured arms was quantified.

Force. The mean force generated in the first 10 s of the sustained isometric contraction was measured. The time taken for the mean force to drop by more than 50% of this value was determined for the injured and uninjured arms. The percentage differential between injured and uninjured arms was quantified.

Subjective. The time taken for patients to first report fatigue within their elbow flexor muscles during the sustained isometric contraction was recorded for injured and uninjured arms. This was performed in both the injured and uninjured, contralateral arms. The percentage difference in this time interval between injured and uninjured arms was quantified.

Quantification of co-contraction. The co-contraction ratio around the elbow joint was quantified using previously documented protocols^{54–56}. The raw EMG signals obtained during the sustained isometric contraction of elbow flexor muscles were collected and analysed using DATALite software (Biometrics Ltd). The root mean square (RMS) of the EMG data and area under the RMS curve (AOC sEMG) was determined for elbow flexor and extensor compartments. Equation 1 was used to quantify the mean co-contraction ratio around the elbow joint for injured and uninjured arms.

$$\text{Co-contraction ratio} = \frac{\text{AOC for antagonist muscle (triceps brachii)}}{\text{AOC for agonist muscle (biceps brachii)}} \quad (1)$$

Equation (1)—Quantification of co-contraction around the elbow joint.

Subjective assessment of muscular function. All participants were assessed using SPONEA:

“A normal elbow is one which is pain-free, has full range of movement, normal strength and allows you to do what you feel your elbow should allow you to do. A normal elbow is scored at 100% whereas a completely useless elbow is scored at 0%. How would you rate your elbow at the present time?”

0%	10%	20%	30%	40%	50%	60%	70%	80%	90%	100%
----	-----	-----	-----	-----	-----	-----	-----	-----	-----	------

Statistics. The responsiveness of each parameter was compared using Pearson or Spearman correlation as appropriate. Correlations were measured using the following scale of R^2 ranges: of <0.3 (poor), $>0.3–0.4$ (weak), $>0.4–0.5$ (weak to moderate), $>0.5–0.6$ (moderate), $>0.6–0.7$ (moderate to good), $>0.7–0.8$ (good) and >0.8 (very good). A HGP was implemented to model the recovery of muscle volume, MRC grade and SPONEA over time following surgery. Further information on how this was performed is provided in the Supplementary Material. All data are presented as mean, median and standard deviation unless otherwise stated. Two-tailed Student's t-test and one-way ANOVA test with post-hoc Bonferroni correction was used to determine statistical significance where appropriate. A p value of <0.05 was considered significant. A two-way random effects model was used to determine the ICC. ICC values are presented with 95% confidence intervals unless otherwise stated.

Ethics approval and consent to participate. This study received ethical approval (Research Ethics Committee reference 17/YH/0413 and IRAS ID 235012 (Yorkshire and the Humber, Sheffield); IRAS ID: 202847 and Research Ethics Committee reference 17/WM/0438, IRAS ID 231428 (West Midlands and Black Country)) and all patients were recruited after fully informed written consent. Written informed consent was received from participants prior to inclusion in the study.

Data availability

The datasets used and/or analysed during the current study are available from the corresponding author on reasonable request.

Received: 8 February 2021; Accepted: 18 October 2021

Published online: 17 November 2021

References

- McAllister, R. M. R., Gilbert, S. E. A., Calder, J. S. & Smith, P. J. The epidemiology and management of upper limb peripheral nerve injuries in modern practice. *J. Hand Surg.: Br. Eur.* **21**, 4–13. [https://doi.org/10.1016/S0266-7681\(96\)80004-0](https://doi.org/10.1016/S0266-7681(96)80004-0) (1996).
- Midha, R. Epidemiology of brachial plexus injuries in a multitrauma population. *Neurosurgery* **40**, 1182–1188. <https://doi.org/10.1097/00006123-199706000-00014> (1997).
- Saadat, S., Eslami, V. & Rahimi-Movaghar, V. The incidence of peripheral nerve injury in trauma patients in Iran. *Ulusal travma ve acil cerrahi dergisi = Turk. J. Trauma Emerg. Surg.: TJTES* **17**, 539–544 (2011).
- Huckhagel, T., Nüchtern, J., Regelsberger, J., Lefering, R. & TraumaRegister, D. G. U. Nerve injury in severe trauma with upper extremity involvement: evaluation of 49,382 patients from the TraumaRegister DGU* between 2002 and 2015. *Scand. J. Trauma Resusc. Emerg. Med.* **26**, 76–76. <https://doi.org/10.1186/s13049-018-0546-6> (2018).
- Rayner, M. L. D., Brown, H. L., Wilcox, M., Phillips, J. B. & Quick, T. J. Quantifying regeneration in patients following peripheral nerve injury. *J. Plastic Reconstr. Aesthetic Surg.* <https://doi.org/10.1016/j.bjps.2019.10.007> (2019).
- Wilcox, M., Gregory, H., Powell, R., Quick, T. J. & Phillips, J. B. Strategies for peripheral nerve repair. *Curr. Tissue Microenviron. Rep.* **1**, 49–59. <https://doi.org/10.1007/s43152-020-00002-z> (2020).
- Sedgwick, P. Clinical trials: outcome measures. *BMJ: Br. Med. J.* **350**, h121. <https://doi.org/10.1136/bmj.h121> (2015).
- Campbell, W. W. Evaluation and management of peripheral nerve injury. *Clin. Neurophysiol.* **119**, 1951–1965. <https://doi.org/10.1016/j.clinph.2008.03.018> (2008).
- Smith, S. & Knight, R. (ed Rolfe Birch) 191–229 (Springer London, 2011).
- Timothy, H. in *Handchirurgie Weltweit e.V., editor. Living Textbook of Hand Surgery* (gms, 2014).

11. Herrera-Perez, M. *et al.* Intraoperative neurophysiological monitoring in peripheral nerve surgery: Technical description and experience in a centre. *Revista española de cirugía ortopédica y traumatología* **59**, 266–274. <https://doi.org/10.1016/j.recot.2014.11.004> (2015).
12. Maathuis, E. M., Drenthen, J., van Doorn, P. A., Visser, G. H. & Blok, J. H. The CMAP scan as a tool to monitor disease progression in ALS and PMA. *Amyotroph Lateral Scler Frontotemporal Degener* **14**, 217–223. <https://doi.org/10.3109/21678421.2012.732079> (2013).
13. Lawson, V. H., Gordon Smith, A. & Bromberg, M. B. Assessment of axonal loss in Charcot-Marie-tooth neuropathies. *Exp. Neurol.* **184**, 753–757. [https://doi.org/10.1016/s0014-4886\(03\)00293-0](https://doi.org/10.1016/s0014-4886(03)00293-0) (2003).
14. Wessig, C., Koltzenburg, M., Reiners, K., Solymosi, L. & Bendszus, M. Muscle magnetic resonance imaging of denervation and reinnervation: correlation with electrophysiology and histology. *Exp. Neurol.* **185**, 254–261 (2004).
15. de Carvalho, M., Barkhaus, P. E., Nandedkar, S. D. & Swash, M. Motor unit number estimation (MUNE): Where are we now?. *Clin. Neurophysiol.: Off. J. Int. Feder. Clin. Neurophysiol.* **129**, 1507–1516. <https://doi.org/10.1016/j.clinph.2018.04.748> (2018).
16. Sunderland, S. Rate of nerve regeneration in human peripheral nerves: analysis of the interval between injury and onset of recovery. *Arch. Neurol. Psychiatry* **58**, 251–295. <https://doi.org/10.1001/archneurpsyc.1947.02300320002001> (1947).
17. Wilcox, M., Brown, H., Johnson, K., Sinisi, M. & Quick, T. J. An assessment of fatigability following nerve transfer to reinnervate elbow flexor muscles. *Bone Joint J.* **101-b**, 867–871. <https://doi.org/10.1302/0301-620x.101b7.Bjj-2019-0005.R1> (2019).
18. Chammas, M., Micallef, J. P., Prefaut, C. & Allieu, Y. Fatigue analysis of human reinnervated muscle after microsurgical nerve repair. *Clin. Orthop. Related Res.* **334**, 144–149 (1997).
19. Wilcox, M. *et al.* 22 volumetric MRI; a potential outcome measure of muscle reinnervation. *Br. J. Surg.* <https://doi.org/10.1093/bjs/znab134.527> (2021).
20. Wood, M. D., Kemp, S. W. P., Weber, C., Borschel, G. H. & Gordon, T. Outcome measures of peripheral nerve regeneration. *Ann. Anat. Anatomischer Anzeiger* **193**, 321–333. <https://doi.org/10.1016/j.aanat.2011.04.008> (2011).
21. Quick, T. J., Singh, A. K., Fox, M., Sinisi, M. & MacQuillan, A. A quantitative assessment of the functional recovery of flexion of the elbow after nerve transfer in patients with a brachial plexus injury. *Bone Joint J.* **98**, 1517–1520. <https://doi.org/10.1302/0301-620X.98B11.36113> (2016).
22. Chia, D. S. Y., Doi, K., Hattori, Y. & Sakamoto, S. Elbow flexion strength and contractile activity after partial ulnar nerve or intercostal nerve transfers for brachial plexus injuries. *J. Hand Surg.* <https://doi.org/10.1177/1753193420922184> (2020).
23. Brown, H., Johnson, K., Gilbert, A. & Quick, T. J. The lived experience of motor recovery of elbow flexion following Oberlin nerve transfer: a qualitative analysis. *Hand Therapy* **23**, 130–138. <https://doi.org/10.1177/1758998318796010> (2018).
24. Nelson, E. C. *et al.* Patient reported outcome measures in practice. *BMJ: Br. Med. J.* **350**, g7818. <https://doi.org/10.1136/bmj.g7818> (2015).
25. Quick, Tom J. H. The Clinical Assessment of Re-innervated Motor Function / Tom J. H. Quick. (2018).
26. Noorani, A. M. *et al.* Validation of the Stanmore percentage of normal shoulder assessment. *Int. J. Shoulder Surg.* **6**, 9–14. <https://doi.org/10.4103/0973-6042.94307> (2012).
27. Morrow, J. M. *et al.* MRI biomarker assessment of neuromuscular disease progression: a prospective observational cohort study. *Lancet Neurol.* **15**, 65–77. [https://doi.org/10.1016/s1474-4422\(15\)00242-2](https://doi.org/10.1016/s1474-4422(15)00242-2) (2016).
28. Jenkins, T. M. *et al.* Imaging muscle as a potential biomarker of denervation in motor neuron disease. *J. Neurol. Neurosurg. Psychiatry* **89**, 248–255. <https://doi.org/10.1136/jnnp-2017-316744> (2018).
29. Müller, M. *et al.* Semi-automated volumetry of MRI serves as a biomarker in neuromuscular patients. *Muscle Nerve* **61**, 600–607. <https://doi.org/10.1002/mus.26827> (2020).
30. Rossor, A. M., Shy, M. E. & Reilly, M. M. Are we prepared for clinical trials in Charcot-Marie-Tooth disease?. *Brain Res* **1729**, 146625. <https://doi.org/10.1016/j.brainres.2019.146625> (2020).
31. Wilcox, M., Brown, H. & Quick, T. in *Peripheral Nerve Tissue Engineering and Regeneration* (eds James Phillips, David Hercher, & Thomas Hausner) 1–46 (Springer International Publishing, 2020).
32. MacAvoy, M. C. & Green, D. P. Critical reappraisal of Medical Research Council muscle testing for elbow flexion. *J. Hand Surg.* **32**, 149–153. <https://doi.org/10.1016/j.jhsa.2006.10.020> (2007).
33. Murphy, R. N. A. *et al.* A quantitative systematic review of clinical outcome measure use in peripheral nerve injury of the upper limb. *Neurosurgery* **89**, 22–30. <https://doi.org/10.1093/neuros/nyab060> (2021).
34. Wu, P. *et al.* Key changes in denervated muscles and their impact on regeneration and reinnervation. *Neural Regen. Res.* **9**, 1796–1809. <https://doi.org/10.4103/1673-5374.143424> (2014).
35. Tuffaha, S. H. *et al.* Growth hormone therapy accelerates axonal regeneration, promotes motor reinnervation, and reduces muscle atrophy following peripheral nerve injury. *Plast. Reconstr. Surg.* **137**, 1771–1780. <https://doi.org/10.1097/prs.0000000000002188> (2016).
36. Lopez, J. *et al.* Growth hormone improves nerve regeneration, muscle re-innervation, and functional outcomes after chronic denervation injury. *Sci. Rep.* **9**, 3117. <https://doi.org/10.1038/s41598-019-39738-6> (2019).
37. Peterson, M. D., Pistilli, E., Haff, G. G., Hoffman, E. P. & Gordon, P. M. Progression of volume load and muscular adaptation during resistance exercise. *Eur. J. Appl. Physiol.* **111**, 1063–1071. <https://doi.org/10.1007/s00421-010-1735-9> (2011).
38. Williams, G. N., Gangel, T. J., Arciero, R. A., Uhorchak, J. M. & Taylor, D. C. Comparison of the single assessment numeric evaluation method and two shoulder rating scales. Outcomes measures after shoulder surgery. *Am. J. Sports Med.* **27**, 214–221. <https://doi.org/10.1177/03635465990270021701> (1999).
39. Fuchs, B., Jost, B. & Gerber, C. Posterior-inferior capsular shift for the treatment of recurrent, voluntary posterior subluxation of the shoulder. *J. Bone Joint Surg. Am.* **82**, 16–25. <https://doi.org/10.2106/00004623-200001000-00003> (2000).
40. Gerber, C., Maquieira, G. & Espinosa, N. Latissimus dorsi transfer for the treatment of irreparable rotator cuff tears. *J. Bone Joint Surg. Am.* **88**, 113–120. <https://doi.org/10.2106/jbjs.E.00282> (2006).
41. Tung, T. H. & Mackinnon, S. E. Nerve transfers: indications, techniques, and outcomes. *J. Hand Surg.* **35**, 332–341. <https://doi.org/10.1016/j.jhsa.2009.12.002> (2010).
42. Jessen, K. R. & Mirsky, R. The success and failure of the Schwann cell response to nerve injury. *Front. Cell. Neurosci.* **13**, 33–33. <https://doi.org/10.3389/fncel.2019.00033> (2019).
43. Wilcox, M. B. *et al.* Characterising cellular and molecular features of human peripheral nerve degeneration. *Acta Neuropathol. Commun.* **8**, 51. <https://doi.org/10.1186/s40478-020-00921-w> (2020).
44. Stenberg, L. & Dahlin, L. B. Gender differences in nerve regeneration after sciatic nerve injury and repair in healthy and in type 2 diabetic Goto-Kakizaki rats. *BMC Neurosci.* **15**, 107–107. <https://doi.org/10.1186/1471-2202-15-107> (2014).
45. Isaacs, J. & Cochran, A. R. Nerve transfers for peripheral nerve injury in the upper limb. *Bone Joint J.* **101-B**, 124–131. <https://doi.org/10.1302/0301-620X.101B2.Bjj-2018-0839.R1> (2019).
46. Hansen, L., Shaheen, A. & Crandall, M. Outpatient follow-up after traumatic injury: Challenges and opportunities. *J. Emerg. Trauma Shock* **7**, 256–260. <https://doi.org/10.4103/0974-2700.142612> (2014).
47. O'Brien, T. D., Reeves, N. D., Baltzopoulos, V., Jones, D. A. & Maganaris, C. N. Strong relationships exist between muscle volume, joint power and whole-body external mechanical power in adults and children. *Exp. Physiol.* **94**, 731–738. <https://doi.org/10.1113/expphysiol.2008.045062> (2009).
48. Sanchis-Moysi, J., Idoate, F., Serrano-Sanchez, J. A., Dorado, C. & Calbet, J. A. L. Muscle hypertrophy in prepubescent tennis players: a segmentation MRI study. *PLoS ONE* **7**, e33622–e33622. <https://doi.org/10.1371/journal.pone.0033622> (2012).

49. Vidt, M. E. *et al.* Characterizing upper limb muscle volume and strength in older adults: A comparison with young adults. *J. Biomech.* **45**, 334–341. <https://doi.org/10.1016/j.jbiomech.2011.10.007> (2012).
50. Benítez Brito, N. *et al.* Relationship between mid-upper arm circumference and body mass index in inpatients. *PLoS ONE* **11**, e0160480. <https://doi.org/10.1371/journal.pone.0160480> (2016).
51. Kumar, P., Sinha, R., Patil, N. & Kumar, V. Relationship between mid-upper arm circumference and BMI for identifying maternal wasting and severe wasting: a cross-sectional assessment. *Public Health Nutr.* **22**, 2548–2552. <https://doi.org/10.1017/S1368980019000727> (2019).
52. Molinari, F., Knaflitz, M., Bonato, P. & Actis, M. V. Electrical manifestations of muscle fatigue during concentric and eccentric isokinetic knee flexion-extension movements. *I.E.E.E. Trans. Biomed. Eng.* **53**, 1309–1316. <https://doi.org/10.1109/TBME.2006.873680> (2006).
53. Gonzalez-Izal, M., Malanda, A., Gorostiaga, E. & Izquierdo, M. Electromyographic models to assess muscle fatigue. *J. Electromyogr. Kinesiol.: Off. J. Int. Soc. Electrophysiol. Kinesiol.* **22**, 501–512. <https://doi.org/10.1016/j.jelekin.2012.02.019> (2012).
54. Suzuki, M., Shiller, D. M., Gribble, P. L. & Ostry, D. J. Relationship between cocontraction, movement kinematics and phasic muscle activity in single-joint arm movement. *Exp. Brain Res.* **140**, 171–181. <https://doi.org/10.1007/s002210100797> (2001).
55. Gribble, P. L., Mullin, L. I., Cothros, N. & Mattar, A. Role of cocontraction in arm movement accuracy. *J. Neurophysiol.* **89**, 2396–2405. <https://doi.org/10.1152/jn.01020.2002> (2003).
56. Missenard, O., Mottet, D. & Perrey, S. The role of cocontraction in the impairment of movement accuracy with fatigue. *Experimental brain research. Experimentelle Hirnforschung. Experimentation cérébrale* **185**, 151–156. <https://doi.org/10.1007/s00221-007-1264-x> (2008).

Acknowledgements

The authors would like to acknowledge Ms. Neena Kerai and Rodney Santiago for help in co-ordinating this study as well as the patients for their participation. Professor Mary Reilly reviewed the manuscript for which the authors are very grateful. We also acknowledge Dr. Marco Sinisi and Mr. Mike Fox for the inclusion of their patients in this study. The authors also thank Dr. Kununya Pimolbutr for assistance with statistical analysis and testing the reproducibility of the study protocol.

Author contributions

M.W. contributed to the study design, collected and analysed data and wrote the manuscript. L.C. performed statistical analysis, assisted with data interpretation and reviewed the manuscript. R.H. designed the MRI imaging protocol, assisted with data interpretation and reviewed the manuscript. T.T. performed the neurophysiological assessments and reviewed the manuscript. H.B. designed SPONEA, contributed to the study design and reviewed the manuscript. M.M. processed the MRI scans, assisted with statistical analysis as well as data interpretation and reviewed the manuscript. J.P. assisted with data interpretation and reviewed the manuscript. SO informed the study design and reviewed the manuscript. T.Q. conceived the study design, assisted with data interpretation and reviewed the manuscript.

Funding

This work was funded by the Royal National Orthopaedic Hospital Charitable Trust to TQ, England Golf Trust to MW and a UCL Graduate Research Scholarship to MW. Author J.P. was also supported by funding from the Engineering and Physical Sciences Research Council (EPSRC) EP/R004463/1.

Competing interests

The authors declare no competing interests.

Additional information

Supplementary Information The online version contains supplementary material available at <https://doi.org/10.1038/s41598-021-01342-y>.

Correspondence and requests for materials should be addressed to M.W.

Reprints and permissions information is available at www.nature.com/reprints.

Publisher's note Springer Nature remains neutral with regard to jurisdictional claims in published maps and institutional affiliations.



Open Access This article is licensed under a Creative Commons Attribution 4.0 International License, which permits use, sharing, adaptation, distribution and reproduction in any medium or format, as long as you give appropriate credit to the original author(s) and the source, provide a link to the Creative Commons licence, and indicate if changes were made. The images or other third party material in this article are included in the article's Creative Commons licence, unless indicated otherwise in a credit line to the material. If material is not included in the article's Creative Commons licence and your intended use is not permitted by statutory regulation or exceeds the permitted use, you will need to obtain permission directly from the copyright holder. To view a copy of this licence, visit <http://creativecommons.org/licenses/by/4.0/>.

© The Author(s) 2021, corrected publication 2021