

Resource partitioning between ungulate populations in arid environments

Robert S. C. Cooke^{1,2}, Tim Woodfine², Marie Petretto² & Thomas H. G. Ezard^{1,3}

¹Centre for Biological Sciences, University of Southampton, Life Sciences Building (B85), Highfield Campus, Southampton SO17 1BJ, UK

²Marwell Wildlife, Thompson's Lane, Colden Common, Winchester, Hampshire SO21 1JH, UK

³School of Ocean and Earth Sciences, National Oceanography Centre Southampton, University of Southampton, Southampton SO17 1BJ, UK

Keywords

Desert, distance sampling, dorcas gazelle, North Africa, reintroduction, scimitar-horned oryx.

Correspondence

Robert S. C. Cooke, Centre for Biological Sciences, University of Southampton, Life Sciences Building (B85), Highfield Campus, Southampton, SO17 1BJ, UK.

Tel: 01962777934;

Fax: 01962777511;

E-mail: r.s.cooke@soton.ac.uk

Funding Information

Wellcome Trust (Grant/Award Number: "103780") Natural Environment Research Council (Grant/Award Number: "NE/J018163/1").

Received: 9 November 2015; Revised: 26 April 2016; Accepted: 11 May 2016

Ecology and Evolution 2016; 6(17): 6354–6365

doi: 10.1002/ece3.2218

Abstract

Herbivores are major drivers of ecosystem structure, diversity, and function. Resilient ecosystems therefore require viable herbivore populations in a sustainable balance with environmental resource availability. This balance is becoming harder to achieve, with increasingly threatened species reliant on small protected areas in increasingly harsh and unpredictable environments. Arid environments in North Africa exemplify this situation, featuring a biologically distinct species assemblage exposed to extreme and volatile conditions, including habitat loss and climate change-associated threats. Here, we implement an integrated likelihood approach to relate scimitar-horned oryx (*Oryx dammah*) and dorcas gazelle (*Gazella dorcas*) density, via dung distance sampling, to habitat, predator, and geographic correlates in Dghoumes National Park, Tunisia. We show how two threatened sympatric ungulates partition resources on the habitat axis, exhibiting nonuniform responses to the same vegetation gradient. Scimitar-horned oryx were positively associated with plant species richness, selecting for vegetated ephemeral watercourses (wadis) dominated by herbaceous cover. Conversely, dorcas gazelle were negatively associated with vegetation density (herbaceous height, litter cover, and herbaceous cover), selecting instead for rocky plains with sparse vegetation. We suggest that adequate plant species richness should be a prerequisite for areas proposed for future ungulate reintroductions in arid and semi-arid environments. This evidence will inform adaptive management of reintroduced ungulates in protected environments, helping managers and planners design sustainable ecosystems and effective conservation programs.

Introduction

Effective conservation management is essential for the dynamic arid regions of the world (Durant et al. 2014). Arid environments cover 17% of the world's land mass and harbor 25% of terrestrial vertebrate species (Mace et al. 2005; Safriel et al. 2005), including charismatic and threatened species such as antelopes (Durant et al. 2014). Global data from the IUCN Antelope Specialist Group show that 27% of antelope species are threatened with extinction; however, this rises to 89% when only arid-adapted antelope are considered (Mésochina and Cooke 2015). Desert environments are characterized by low biomass and vegetative cover relative to more mesic systems, with high spatiotemporal variability driven by

pulses of resource saturation (Illius and O'Connor 2000; Schwinning and Sala 2004). These pulses drive stochastic events, including unpredicted population declines (Illius and O'Connor 2000). Small protected areas, where many threatened populations live, intensify these threats (Islam et al. 2010; Durant et al. 2015). Arid ecosystems can therefore provide important insights into extinction risk for dynamic, yet constrained, environments.

Herbivores are major drivers of ecosystem structure, diversity, and function (Danell et al. 2006). Viable herbivore populations depend upon their distribution and abundance and the fitness of individuals, which are often determined by habitat and resource selection (Gaillard et al. 2010; DeCesare et al. 2014; Boyce et al. 2016). These resource selection decisions shape the capacity of

herbivores to respond to their environment and depend upon innate-specific ecological preferences determined by multiple synergistic factors including predation, climatic conditions, vegetation, terrain features, and competition, all mediated by interspecific differences in body size and life history (Kittle *et al.* 2008). Understanding which factors drive these resource decisions is vital for effective species- and landscape-level management (Cromsigt and Olff 2006; Kittle *et al.* 2008). This is particularly acute for arid ecosystems, where populations must cope with low resource availability, resource pulses, and stochastic events, leading to disparate herbivore responses including resource partitioning (Illius and O'Connor 2000; Ostfeld and Keesing 2000). Techniques that robustly quantify ungulate density and its determining factors are therefore a foundational management tool (Marques *et al.* 2001; Laing *et al.* 2003).

The arid North African Sahelo-Saharan region contains a distinct species assemblage (Burgess *et al.* 2006) subject to high levels of present and future threats (Thomas 2008), yet has attracted very little scientific attention (Durant *et al.* 2014) compared to African savannahs (Darmon *et al.* 2012). The magnitude and velocity of climate change in North Africa are predicted to be strong and fast, including more frequent droughts and changes in rainfall patterns (Thomas 2008; Loarie *et al.* 2009). These changes will impact vegetation and habitat structure and, in turn, influence resource decisions and competitive interactions between species (Post and Pedersen 2008). Habitats have substantial influence on herbivore distribution and abundance (Boyce *et al.* 2016), and species' resource decisions may vary considerably depending on the focal species' behavior and its perception of habitat (Tews *et al.* 2004). Despite this crucial role, habitat type is rarely quantified directly and is instead often categorized subjectively based on inference from structural parameters or dominant species (e.g., Cromsigt *et al.* 2009; Darmon *et al.* 2012). Here, we complement a subjective assessment with a quantitative habitat classification, where the focal species' density and resource preferences convey their perception of habitat.

We develop the themes identified in studies of Asiatic wild ass (*Equus hemionus*) and dorcas gazelle (*Gazella dorcas*) in Israel (Henley *et al.* 2007); six savannah ungulates in South Africa (Cromsigt *et al.* 2009); and dorcas gazelle in Senegal (Abáigar *et al.* 2013). We employ a novel integrated likelihood approach for indirect (dung) distance sampling (Oedekoven *et al.* 2013), to relate, for the first time, environmental correlates to ungulate density in an arid environment. By linking species decisions from the feeding patch level, through habitat types to the dynamic arid landscape, this quantification of scimitar-horned oryx (*Oryx dammah*) and dorcas gazelle density

and its determining factors aims to improve our understanding of resource partitioning and habitat selection in infrequently studied environments.

Methods

Study site

The fenced section of Dghoumes National Park, Tunisia (34°03'N, 8°33'E), comprises two distinct areas of topography: an intermediate plain consisting of continental subdesert steppe, marked by a series of wadis, and a mountain region to the north (Le Houérou 2001; Woodfine *et al.* 2009). Although both species had access to and made occasional use of the adjoining mountains (R. S. C. Cooke, pers. obs.), we restricted our investigation to the plain (3800 ha; Fig. 1). Fieldwork was conducted during March and April 2014. We surveyed two reintroduced ungulate populations: the large-bodied (≈ 150 kg) scimitar-horned oryx and the small-bodied (≈ 15 kg) dorcas gazelle (Kingdon *et al.* 2013), hereafter oryx and gazelle. Gazelle were reintroduced to Dghoumes in 2002 and by 2012 numbered approximately 60 individuals; oryx were reintroduced in 2008 and reached approximately 75 individuals by 2012 (M. Petretto, pers. obs; Woodfine *et al.* 2009).

Indirect distance sampling

We surveyed 18 pairs of 200×8 m strip transects (Fig. 1). Pairs consisted of one transect in wadi habitat and a parallel transect 100 m to the west in plain habitat. The 100-m spacing was approximately half the distance between the sampled wadi with the nearest neighboring wadi, that is, equidistant between the closest two wadis, to ensure the plain transects fell in the adjoining inter-wadi plain for all locations. Eight wadi systems (the major wadis across Dghoumes and their adjoining plains) were chosen to represent the regions substrate and vegetation gradients. Perpendicular distances were recorded from the line to the center of all fecal pellet events within the sampling band. Pellet events were defined as a group of at least 10 pellets of consistent age and size. Although ungulates do not always defecate where they graze, that is, in the actual feeding patch, they generally defecate in the same locality as where they forage (Cromsigt *et al.* 2009). The wide sampling strip aimed to account for this and to reduce the potential for bias from edge effects (Marques *et al.* 2001).

A total of 825 pellet events were recorded for oryx (640) and gazelle (185). Of these, 65 pellet events (12 oryx and 53 gazelle) were classified as territorial clusters of feces known as middens (Attum and Mahmoud 2012).

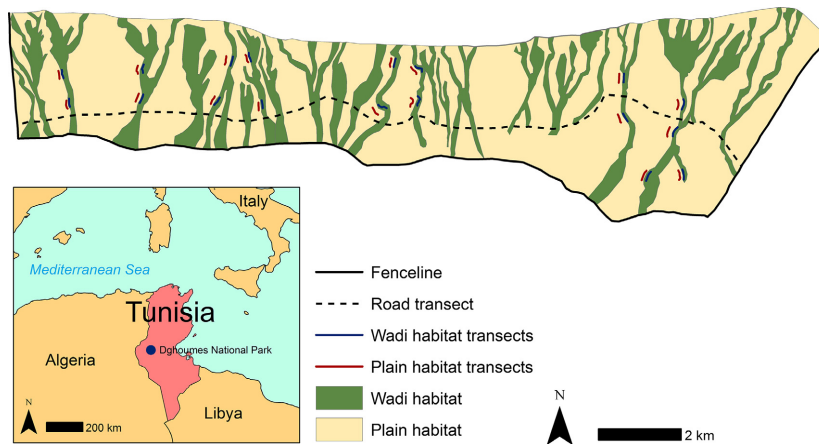


Figure 1. Habitat map of Dghoumes National Park and its location within Tunisia (inset). Dghoumes is unfenced to the north, with the mountains acting as a physical barrier. The locations of the direct (road) and indirect (wadi and plain) transects are also presented. Two pairs of transects were placed in the southeast of the reserve to account for a distinct physiognomic dune area.

Middens do not reflect resource use with their location driven by territorial factors (Attum and Mahmoud 2012), and so were excluded from analysis, leaving 628 oryx and 132 gazelle pellet events from which density was calculated in DISTANCE 6.2 (Thomas *et al.* 2010).

Population estimates

As a comparative density estimate, we carried out direct distance sampling along the 14 km central road six times during the survey period (Fig. 1). For each observation, we recorded species, number of individuals, radial angle and sight distance at first contact. This was also compared to previous sweep census estimates; in which a line of observers (park guards and MP; spaced so that each only views in one direction and can see the next observer) crossed the park from the western to the eastern boundary (*sensu* Bowland and Perrin 1994). Population estimates were generated from direct and indirect data in DISTANCE 6.2 at the site and habitat level. Indirect data require estimates of defecation rate (Appendix S2) and decay rate (Appendix S3). The decay rates demonstrate that a long-term dataset (490–520 days) on habitat use is produced from a short survey period in arid environments.

Vegetation

Vegetation sampling was designed to quantify relevant environmental variation in vegetative structure, forage availability, and water availability (Voeten and Prins 1999; Henley *et al.* 2007). Eleven vegetation quadrats (1 m²) were placed 20 m apart along the center line of the transects. Structure was determined by visually estimating percentage cover of habitat components: rock, litter (dead vegetative matter), herbaceous, shrub and tree (Tabeni and Ojeda 2005). Plant species richness [species were

identified by RC, MP, and park guards following Ozenda (2004)] and the mean height of each plant stratum were also recorded (Voeten and Prins 1999; Tabeni and Ojeda 2005). A smaller biomass quadrat (0.063 m²) was placed randomly inside each vegetation quadrat. This quadrat was clipped to ground level and sorted into woody and nonwoody biomass. The nonwoody portion was weighed initially, then dried, and weighed repeatedly until the mass reached an asymptote to calculate percentage water content.

Predation

The combined relative abundance of the predators, African golden wolf (*Canis anthus*), Rüppell's fox (*Vulpes rueppellii*), and red fox (*Vulpes vulpes*) (Yom-Tov *et al.* 1995; Gilbert and Woodfine 2004), was approximated by the number of Canidae fecal scats within each transect (total of 38 scats recorded).

Integrated likelihood approach

A new integrated likelihood approach (Oedekoven *et al.* 2013) was applied to the environmental data collected. For this, we modeled 17 predictor variables and hypothesized their effect (Table 1). Vegetative strata were defined by their physical and functional characteristics: herbaceous (vegetation consisting entirely of nonwoody biomass), shrub (vegetation with an average height of <1 m, consisting of both woody and nonwoody biomass), and tree (vegetation consisting of both woody and nonwoody biomass, with an average height of >1 m). These were quantified in both the vertical dimensions, where different grazers specialize on different heights (Farnsworth *et al.* 2002) and the horizontal dimension, where ungulates demonstrate patch-specific use of resources (Turner *et al.* 1997).

Table 1. Predictor variables and their anticipated effect on the response variables: scimitar-horned oryx and dorcas gazelle density.

Driver	Hypothesis	Reference(s)
Habitat type (wadi/plain)	We expect both species to preferentially utilize the wadi habitat, due to its greater vegetation and shade	Beudels <i>et al.</i> (2005)
Wadi location	We expect the larger oryx to use a higher proportion of the landscape and therefore be less dependent on specific wadi systems than the smaller gazelle	Cromsigt <i>et al.</i> (2009)
North–south gradient	A topographic gradient from the elevated northern transects to the more saline south. We expect both species to prefer the northern regions, which have greater access to the mountains. This response may be more intense for gazelle, as they avoid consuming halophytic plants	Yom-Tov <i>et al.</i> (1995)
East–west gradient	A substrate gradient from sand in the east to gravel in the west. We would expect oryx to prefer the east, with its enlarged hooves and gazelle the west, due to its smaller hooves	Yom-Tov <i>et al.</i> (1995), Beudels <i>et al.</i> (2005)
Rock cover	A fine scale representation of the substrate gradient (see east–west gradient)	Yom-Tov <i>et al.</i> (1995), Beudels <i>et al.</i> (2005)
Litter cover	High litter cover correlates with high vegetation availability and density and therefore forage and shade. A positive association is expected	Beudels <i>et al.</i> (2005)
Nonwoody biomass	Equates to forage availability, we expect it to be positively related to ungulate density in this resource-limited environment	
Woody biomass	Characterizes browse availability, as both species demonstrate flexible foraging strategies, we predict positive associations	Beudels <i>et al.</i> (2005)
Herbaceous cover and height	Equates to graze, which is important for both species and particularly for oryx, who are primarily grazers	Gilbert and Woodfine (2004)
Shrub cover and height	Provides low-growing browse and shade, especially for gazelle which prefer shallow depressions protected by shrubs	Yom-Tov <i>et al.</i> (1995)
Tree cover and height	Trees function as shade providers, which is a habitat characteristic, that is, known to be important for gazelle and oryx. This shade often leads to high concentrations of annual plants under tree canopies; therefore, we expect both species to select for areas of high tree cover/height	Yom-Tov <i>et al.</i> (1995), Beudels <i>et al.</i> (2005), Attum and Mahmoud (2012)
Plant water content	Gazelle and oryx do not rely on free water, but are strongly dependent on moisture-rich plants; thus, we expect positive relationships	Kingdon <i>et al.</i> (2013)
Plant species richness	Plant species richness represents the opportunity to select a diet of appropriate quality. We therefore expect both species to select for high plant species richness in order to maximize nutrient intake	Freeland and Janzen (1974), Westoby (1978), Henley <i>et al.</i> (2007)
Predation	We expect both species to avoid areas with high predator abundance, especially gazelle, as smaller herbivores experience higher predation pressure than larger herbivores	Sinclair <i>et al.</i> (2003), Kittle <i>et al.</i> (2008)

The integrated likelihood approach can accommodate surveys with nonrandom placement of transects and imperfect detectability. A generalized linear mixed-effect model was used to simultaneously estimate density via a log link with a Poisson error structure (see Appendix S1) and a global half-normal detection function in three distance intervals away from the center line (0–1.33; 1.33–2.67; 2.67–4 m). This detection function produced a lower Akaike information criterion corrected for small sample size (AICc) and a more stable model (more consistent Hessian matrix) compared to a hazard-rate detection. The model was implemented in R version 3.1.1 (R Core Team 2014).

The large number of possible models prevented meaningful stepwise model selection procedures. Instead, we first tested all univariate models of predictor variables and then generated multivariate models of the best predictor variables (based on AICc for the univariate models;

Burnham and Anderson 2002) with all possible two-way interactions. We used Akaike weights (w_i) to determine the relative probability of each candidate model being the “correct” model (Mazerolle 2006). This allowed a 95% confidence set of best-ranked models to be established, whereby models were included until cumulative w_i reached 0.95 (Burnham and Anderson 2002). Model average coefficients were calculated across the entire candidate set for each of the major predictors (selected based on summed w_i) incorporating model uncertainty (Mazerolle 2006) and are provided in the text.

Habitat classification

A priori habitat structure was categorized according to physiognomic features, whereby vegetation characteristics were resolved on the ground and then applied across an extent as determined by satellite imagery. To produce a

posteriori classified habitats, we used Ward hierarchical clustering, to relate oryx and gazelle density to key predictor variables from the integrated approach for all 36 transects. The goal of these techniques was to quantify habitat subjectively (a priori) and objectively (a posteriori, i.e., from the ungulate's perspective; Krasnov *et al.* 1996).

As a measure of habitat selection, we calculated standardized selection ratios (Manly *et al.* 2002). These can be interpreted as the probability that a species will select a habitat if all were equally available. These ratios were utilized to identify key resource areas (ratio ≥ 0.5 ; Illius and O'Connor 2000). Diversity of habitat use (H') was then calculated as a Shannon–Wiener diversity index, utilizing the selection ratios as proportions of habitat use (Cromsigt *et al.* 2009).

Results

Population estimates

We undertook three population census methods, each of which returned similar estimates of abundance (Table 2). The two direct methods provide snapshots of gazelle and oryx abundance during the survey; the indirect approach quantifies average density over a period corresponding to the mean time to decay (490–520 days; Laing *et al.* 2003).

Table 2. Indirect and direct population estimates.

	Indirect (distance sampling) ^{1,2}		Direct (distance sampling) ^{1,3}		Direct (sweep census) ⁴
	Density	CI	Density	CI	Density
Scimitar-horned oryx	107	71–155	103	61–171	75
Dorcas gazelle	49	27–91	53	11–228	60

¹Indirect and direct distance sampling estimates generated in DISTANCE with 95% confidence intervals.

²Estimated from a sample size of 628 oryx and 132 gazelle pellet events.

³Estimated from a sample size of 163 oryx and 11 gazelle sightings.

⁴Sweep census carried out in 2012 (MP).

Table 3. The confidence set (cumulative $w_i \geq 0.95$) and global null model for scimitar-horned oryx (based on 628 pellet events), with the number of parameters (k), AICc, Δ AICc, and Akaike weights (w_i). The density model included the covariates, in addition to the intercept β_0 and the random effect b_j (wadi system).

ID	Density model	k	AICc	Δ AICc	w_i
1	$\beta_0 + b_j + \text{Rock cover} + \text{Plant species richness}$	5	524.718	0.000	0.488
2	$\beta_0 + b_j + \text{Rock cover} + \text{Habitat type (wadi/plain)}$	5	525.626	0.901	0.310
3	$\beta_0 + b_j + \text{Rock cover} + \text{Herbaceous height}$	5	528.079	3.362	0.091
4	$\beta_0 + b_j + \text{Rock cover} + \text{Herbaceous cover}$	5	528.752	4.034	0.065
5	$\beta_0 + b_j$ (Global null model)	3	555.984	31.267	0.000

Integrated likelihood approach

Four of the 22 candidate models (Appendix S4) were included in the 95% confidence set for scimitar-horned oryx density (Table 3). Models 1 and 2 had effectively equivalent support (Δ AICc < 2) and therefore interpreted as equally valid predictors of variation in oryx density. Rock cover, plant species richness, and habitat type were, in that order (based on summed w_i), the major predictors of oryx density; including the interactions between these predictors did not improve the model. The model-averaged coefficient was negative for rock cover (-0.031 , 95% CI: -0.017 , -0.046), positive for plant species richness (0.208, 95% CI: 0.135, 0.281), and negative for habitat type (-0.691 , 95% CI: -0.726 , -0.657). Oryx density was therefore higher in the wadi habitat, areas of low rock cover, and/or high plant species richness.

For dorcas gazelle, 16 of the 19 candidate models (Appendix S4) were included in the 95% confidence set (Table 4), indicating lower discriminatory power than for oryx. Herbaceous height, litter cover, and herbaceous cover were the most influential variables, but less dominant than the analogous oryx models. Models 1–4 explained the same qualitative amounts of variation in gazelle density (Δ AICc < 2). Herbaceous height (-0.053 , 95% CI: -0.095 , -0.012), litter cover (-0.073 , 95% CI: -0.083 , -0.062), and herbaceous cover (-0.036 , 95% CI: -0.040 , -0.033) all had negative effects on gazelle density, which was therefore highest in areas of low herbaceous height and cover, with low litter cover.

When both species were modeled together, including species as an additional categorical explanatory variable, 5 of the 24 candidate models (Appendix S4) were included in the 95% confidence set (Table 5). Model 1 had majority support to predict the differences in oryx and gazelle density (Δ AICc < 2) across the landscape, with the differences attributed to rock cover and plant species richness.

A priori habitat classification

All habitat characteristics were higher in the wadi habitat (Wilcoxon rank-sum test, $P < 0.01$), except for rock

Table 4. The confidence set (cumulative $w_i \geq 0.95$) and global null model for dorcas gazelle (based on 132 pellet events), with the number of parameters (k), AICc, Δ AICc, and Akaike weights (w_i). The density model included the covariates, in addition to the intercept β_0 and the random effect b_j (wadi system).

ID	Density model	k	AICc	Δ AICc	w_i
1	$\beta_0 + b_j +$ Herbaceous height \times Litter cover ¹	6	318.246	0.000	0.184
2	$\beta_0 + b_j +$ Herbaceous height	4	318.781	0.535	0.141
3	$\beta_0 + b_j +$ Litter cover	4	319.157	0.911	0.117
4	$\beta_0 + b_j +$ Herbaceous cover	4	319.265	1.019	0.111
5	$\beta_0 + b_j +$ Nonwoody biomass	4	320.477	2.231	0.060
6	$\beta_0 + b_j$ (Global null model)	3	320.800	2.554	0.051
7	$\beta_0 + b_j +$ Plant water content	4	320.933	2.687	0.048
8	$\beta_0 + b_j +$ East–west gradient	4	321.591	3.345	0.035
9	$\beta_0 + b_j +$ Tree cover	4	321.782	3.536	0.031
10	$\beta_0 + b_j +$ Habitat type (wadi/plain)	4	321.890	3.644	0.030
11	$\beta_0 + b_j +$ North–south gradient	4	321.905	3.659	0.030
12	$\beta_0 + b_j +$ Tree height	4	322.089	3.843	0.027
13	$\beta_0 + b_j +$ Shrub cover	4	322.140	3.894	0.026
14	$\beta_0 + b_j +$ Shrub height	4	322.183	3.937	0.026
15	$\beta_0 + b_j +$ Plant species richness	4	322.402	4.156	0.023
16	$\beta_0 + b_j +$ Woody biomass	4	322.670	4.424	0.020

¹Both main effects and their interaction were fitted.

cover, which was lower ($W = 78.5$, $P < 0.01$; Appendix S5). Oryx density was higher for the wadi habitat (Fig. 2; Appendix S6) with a selection ratio of 0.74, implying that oryx were three times more likely to select the wadis than the plain. The reverse was true for gazelle, with a selection ratio of 0.29 for the wadi and 0.71 for the plain.

A posteriori habitat classification

The cluster analysis indicated that six habitats were distinguishable (Appendix S5) and showed separation on the axes of plant species richness and rock cover (Fig. 3). The habitats were defined as follows: (A) rocky plains with very sparse vegetation (plant cover $<1.5\%$); (B) rocky

plains with sparse vegetation ($<3\%$); (C) sand dunes with intermediate vegetation ($<20\%$); (D) densely vegetated ($>50\%$) dune wadis, dominated by herbaceous cover of *Stipagrostis spp.*; and (E) densely vegetated ($>40\%$) wadis characterized by *Retama raetam*. The final group (F) is a complex conglomerate of wadi and plain habitat with intermediate vegetation density ($<20\%$). These habitats summarize the landscape from an ungulate's perspective and reveal the patterns of resource partitioning between gazelle and oryx in finer resolution (Fig. 3).

Both species demonstrated spatial and resource selection, resulting in nonrandom, but overlapping distributions (Fig. 4). Overall, oryx selected strongest for habitat D (selection ratio 0.54: key resource area), followed by habitats C and E (0.24 and 0.13 respectively), whereas gazelle selected habitat B (0.61: key resource area), followed by A (0.14). The diversity of habitat use was effectively equal for oryx ($H' = 0.55$) and gazelle ($H' = 0.51$). These patterns can be surmised by three subresponses (Fig. 3): oryx dominated dune and wadi habitats (habitats C, D and E); gazelle dominated rocky plains (A and B); and shared resource use of the intermediate habitat (F). Although habitats may appear homogenous such as rocky plains, they may function very differently for the focal species. Gazelle were four times as likely to select rocky plains with sparse vegetation (habitat B) than very sparse vegetation (habitat A).

Discussion

This is the first time that resource partitioning between ungulates has been studied using an integrated likelihood approach (Oedekoven *et al.* 2013) for distance-sampled density estimates. This allows the impacts of explanatory variables to be tested in a regression framework. The approach provides a time-averaged (over a period of 490–520 days) overview of the typical state of the gazelle-oryx interrelationship in Dghoumes National Park, which is crucial for improving knowledge of the focal species' ecology and thus for enhancing conservation actions in

Table 5. The confidence set (cumulative $w_i \geq 0.95$) and global null model for dorcas gazelle and scimitar-horned oryx combined (based on 760 pellet events), including species as an additional categorical explanatory variable, with the number of parameters (k), AICc, Δ AICc, and Akaike weights (w_i). The density model included the covariates, in addition to the intercept β_0 and the random effect b_j (wadi system).

ID	Density model	k	AICc	Δ AICc	w_i
1	$\beta_0 + b_j +$ Rock cover + Plant species richness	5	670.333	0.000	0.571
2	$\beta_0 + b_j +$ Rock cover + Habitat type (wadi/plain)	5	672.842	2.509	0.163
3	$\beta_0 + b_j +$ Rock cover + Ungulate species	5	672.844	2.511	0.163
4	$\beta_0 + b_j +$ Rock cover + Herbaceous height	5	675.356	5.023	0.046
5	$\beta_0 + b_j +$ Rock cover + Herbaceous cover	5	675.671	5.338	0.040
6	$\beta_0 + b_j$ (Global null model)	3	710.192	39.858	0.000

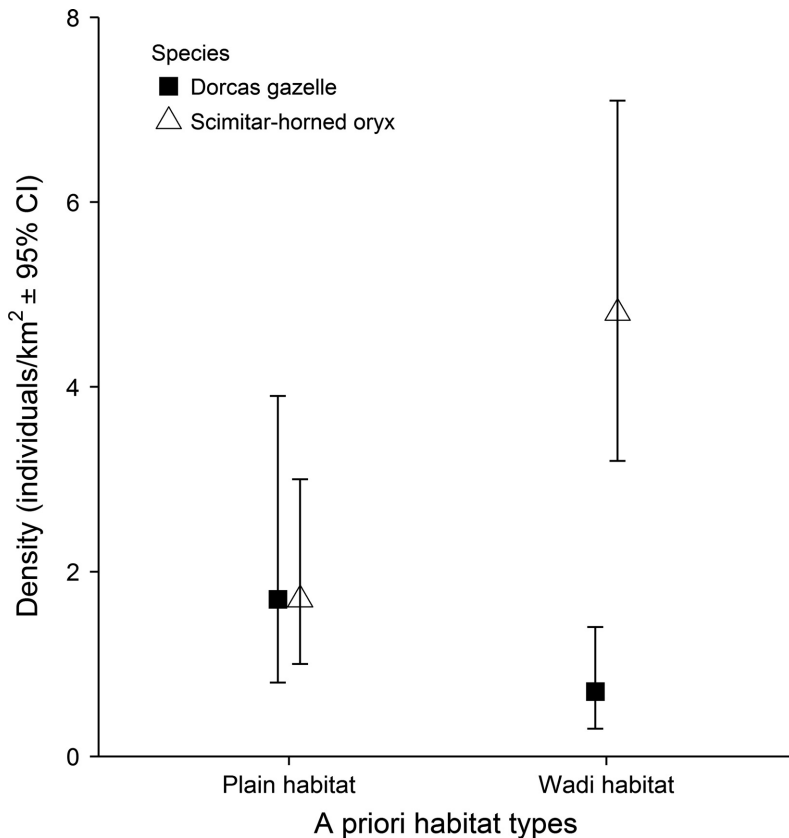


Figure 2. Indirect density estimates and 95% confidence intervals produced in DISTANCE, stratified by a priori habitat.

poorly understood arid systems (Scillitani *et al.* 2013). We show that oryx and gazelle partition resources on the habitat axis, despite nondiscrete spatial distributions: oryx select for the wadi habitats and gazelle select for the open plain habitats (Fig. 2). This resource partitioning and high environmental heterogeneity facilitate coexistence between these species (Godsoe *et al.* 2015) and suggest differences in their realized niches through ecological competition. Temporal shifts in habitat selection could not be distinguished from this single time horizon. We may therefore underestimate the role of opportunistic resource use. In addition, the proximity of the plain to the wadi habitat transects could have influenced the results, although the strong partitioning identified suggests the habitats were selected independently by the focal species (Fig. 2). This could be further investigated in the future by placing plain transects at multiple distances away from the wadi transects. Our results nonetheless support the finding that gazelle select open areas and that habitat structure is the most important factor in selection (Abáigar *et al.* 2013). In particular, we extend those findings to show how vegetation density, as indicated by herbaceous height, litter cover, and herbaceous cover (Table 1), influenced use of resources and habitat by gazelle (Table 4).

Food quality and quantity have been suggested as the two main niche axes that allow resource partitioning for savannah ungulates (Cromsigt and Olff 2006). This was indirectly identified in arid environments, with oryx (Table 3) and Asiatic wild ass (Henley *et al.* 2007) selecting high plant species richness, which acts as a proxy for food quality (Table 1). This association may be part of a positive feedback loop, where large herbivores maximize nutrient intake by selecting a wide range of forage species (Freeland and Janzen 1974; Westoby 1978). These larger, less selectively feeding herbivores are known to increase plant diversity, due to their impact on dominant species and disturbance of the vegetation canopy (Bakker and Olff 2003). This relationship supports the prediction that the physiological need to consume a high diversity of plants may be particularly acute in deserts due to the low nutritional quality of arid plants (Noy-Meir 1973; Herms and Mattson 1994). This ecophysiological need scales allometrically, being more important for the larger-bodied oryx than the small-bodied gazelle, leading to the wide dietary breadths of arid-adapted ungulates (Owen-Smith 1985).

Unlike Abáigar *et al.* (2013), we found no evidence that direct predation pressure from golden jackal is a driver of habitat selection in gazelle ($w_1 = 0.012$; Appendix S4).

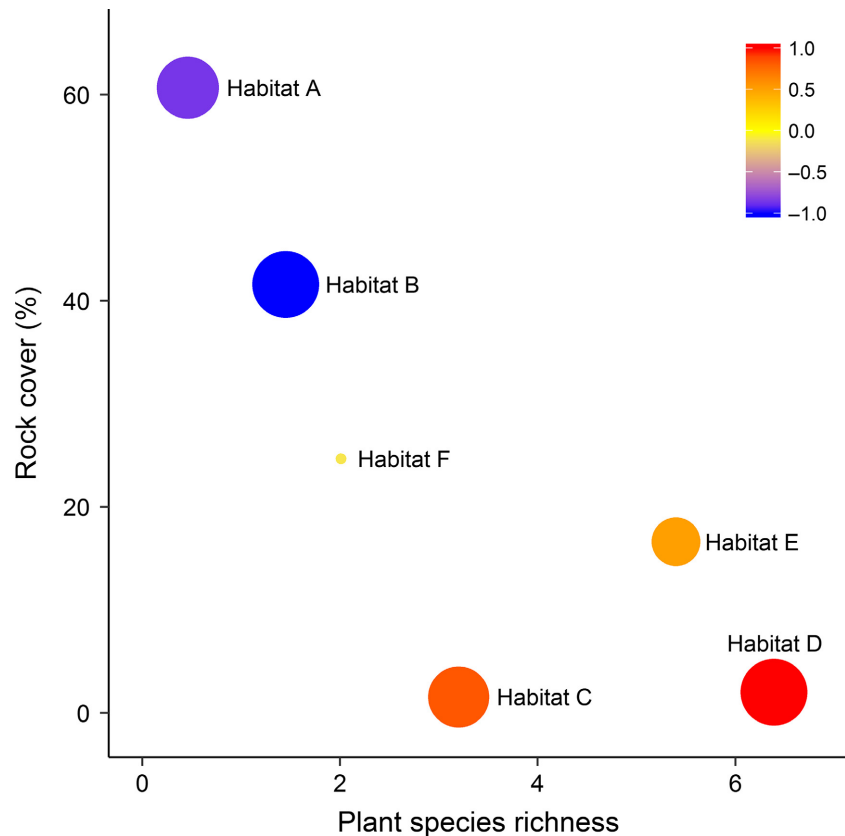


Figure 3. A posteriori habitat types with resource partitioning ratio (size) and combined density index (color) for scimitar-horned oryx and dorcas gazelle. Point size is proportional to the ratio between oryx and gazelle density (small size indicates a shared habitat, and large size indicates a partitioned habitat), and color represents the density of oryx minus gazelle (red representing oryx dominance and blue gazelle dominance). A posteriori habitats are based on cluster analysis (Appendix S5), the difference in oryx and gazelle density, and the key predictor variables: rock cover and plant species richness.

However, predation risk/fear (Brown *et al.* 1999) might lead indirectly to the converse relationships with vegetation density (herbaceous cover and height) shown by gazelle and oryx. Sinclair *et al.* (2003) suggested a threshold body mass equal to that of the oryx marking a transition from predator-limited to resource-limited population dynamics, with gazelle experiencing higher predation pressure due to its smaller size and therefore selecting for more open habitat. Most large predators were extirpated from Tunisia prior to 1960, including cheetah (*Acinonyx jubatus*), which was the major predator of gazelle. Although this is over 11 gazelle generations ago (generation length = 4.9 years; IUCN *in press*), their preference for open habitats may nonetheless be driven by the “ghost of predation past,” in which antipredator behavior is maintained even after selection for it has relaxed (Byers 1997).

We therefore suggest that the wadi/plain partitioning could be driven by a combination of predator-driven gazelle dynamics and resource-limited oryx habitat selection. Targeted data collection would help elucidate the interplay between biotic and abiotic drivers of ungulate resource partitioning in arid environments.

The spatial distribution and resource selection ratios for oryx and gazelle illustrate their reliance on key

resource areas (Figs. 3, 4). Oryx favored dune wadis dominated by herbaceous cover; gazelle selected rocky plains with sparse vegetation (Fig. 3). Gazelle showed weaker selection for habitat types, reflecting its more generalist strategy (Kingdon *et al.* 2013). These key resource areas, in combination with spatial heterogeneity, have the potential to buffer against temporal variability, and therefore major stochastic threats, including frequent episodic mortalities (Illius and O’Connor 2000; Cromsigt *et al.* 2009). The diversity of habitat use was lower for these arid-adapted species (mean $H' = 0.53$) than for savannah species (mean $H' \approx 1$; Cromsigt *et al.* 2009). This specific resource dependence indicates greater vulnerability to threats such as environmental change and/or homogenizing process (e.g., overstocking; Cromsigt *et al.* 2009). Conservation management should therefore prioritize resource-limited species (Martin 2014), particularly the oryx. Limited protected area size exacerbates these threats and poses additional challenges, including disruption of migration/dispersal pathways, restricted access to seasonal forage, and the degradation of key resource areas (Durant *et al.* 2015). Translocations, for example, the proposed Tunisian meta-population strategy (Woodfine *et al.* 2009), could help mitigate against this greater vulnerability to environmental change of fenced rather than free-

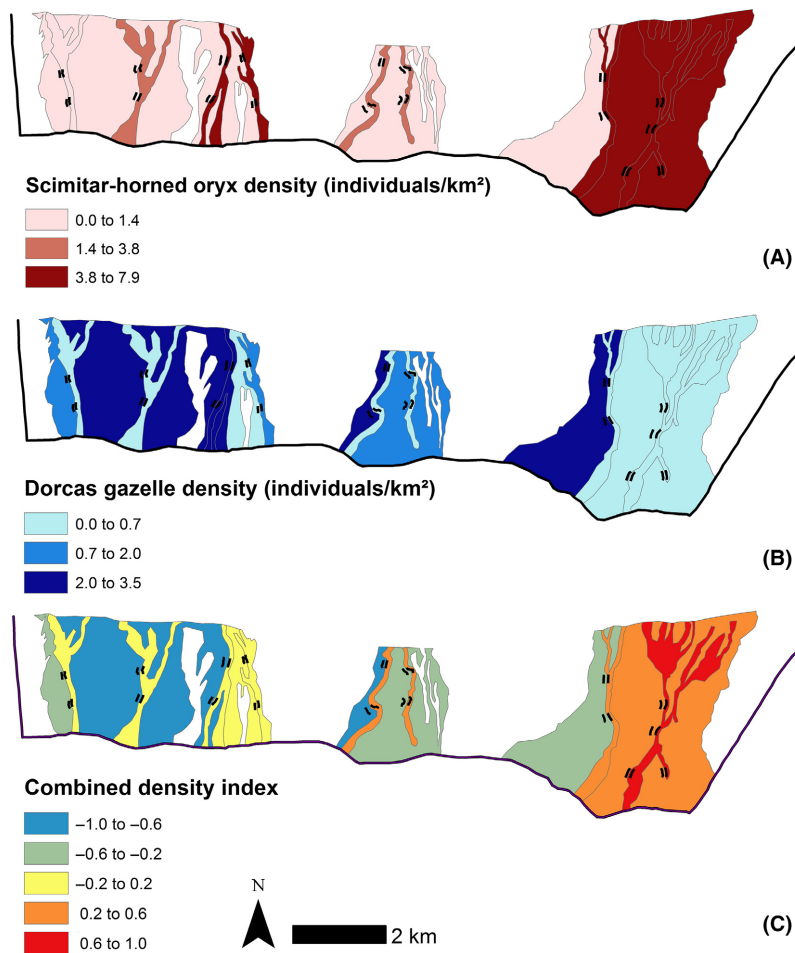


Figure 4. Spatial distribution of scimitar-horned oryx (A), dorcas gazelle (B), and both species combined (C; density of oryx minus gazelle, red representing oryx dominance, blue gazelle dominance and yellow shared habitats) per habitat patch (as defined by the a priori approach). White represents unsampled regions (no transect located within the patch) where density is unknown.

living populations, especially during times of drought or stress (Islam *et al.* 2010; Durant *et al.* 2015).

Reintroductions of ungulates are an important conservation component in North Africa (Abáigar *et al.* 2013), as the region has suffered a catastrophic decline in megafauna (Durant *et al.* 2014). Scillitani *et al.* (2013) state that identifying the factors driving resource selection by reintroduced species is crucial for improving conservation programs and this is a key application of our research. We have highlighted the role of habitat structure and nutrient availability and have demonstrated that although habitats may appear homogenous such as rocky plains, they may function differently for the focal species. This differential use reinforces the consensus that the persistence of a reintroduced population depends upon a complex suite of factors, and not just on food availability (Armstrong and Seddon 2008). Following reintroduction, both oryx and gazelle have demonstrated evidence of resource selection, distributing themselves according to their biological and behavioral preferences. This illustrates their ability to recover natural behaviors in a constrained

environment and indicates their preferred resources postrelease (Abáigar *et al.* 2013). The selection of high-quality resources is fundamental to individuals because it facilitates superior body condition and therefore the probability of reproduction and survival (Gaillard *et al.* 2010), a key step in any successful reintroduction program (Scillitani *et al.* 2013). We reveal the role of food quality for large ungulates (Tables 3, 5) and consider adequate plant species richness a prerequisite for future reintroductions to arid environments, for example, the proposal for a wild population of oryx in the Ouadi Rimé-Ouadi Achim Reserve in Chad (Bemadjim *et al.* 2012). We also provide evidence that substrate (sand to rock) and habitat (open to closed) diversity are required to maintain a multiungulate system in an arid environment by facilitating niche separation (Godsoe *et al.* 2015).

Studying the ecology of arid species is important for conservation as they can reveal alternative relationships to savannah species and experience climatic extremes that generate sharp ecological gradients (Schulz *et al.* 2009). Our evidence from Dghoumes supports the prediction

that habitat selection decisions are taken at various scales (plant, habitat, landscape) in arid environments (Henley *et al.* 2007). Oryx and gazelle showed differing selection of environmental covariates (Tables 3, 4), which lead to opposing selection at the habitat scale (Fig. 2). The strong selection for and against rock cover and against and for plant species richness, for gazelle and oryx, respectively, generates an axis of habitat selection differentiation between the species across the landscape (Figs. 3, 4; Table 5). Such habitat selection can provide important insights into species vulnerability in a rapidly changing environment and therefore their current and future extinction risk (Cromsigt *et al.* 2009; Martin 2014). Our results highlight the importance of adequate plant species richness for the overall ecosystem (Fig. 3; Table 5). The ability to identify similar limiting resources within other sites is essential for sustaining and reintroducing viable populations of threatened species in the expanding arid environments of the future.

Acknowledgments

R. S. C. Cooke was supported by the Wellcome Trust (103780). T. H. G. Ezard is funded by a Natural Environment Research Council Advanced Fellowship (NE/J018163/1). We thank Abdelkader Chetoui, Mona Moller, Boudhief, Mohrsen, Walid, Fawzi, Nowi, and Tawfik for their assistance during fieldwork, particularly the accurate identification of vegetation and dung pellets. We also thank two reviewers and Lex Kraaijeveld, Martin Wilkie, Patrick Doncaster, Claire Dooley, Tania Gilbert, and Judith Lock for comments and suggestions that improved the manuscript.

Conflict of Interest

None declared.

Data Accessibility

Data available from figshare: https://figshare.com/articles/Resource_partitioning_between_fenced_ungulate_populations_in_arid_environments/1508558.

References

- Abáigar, T., M. Cano, and C. Ensenyat. 2013. Habitat preference of reintroduced dorcas gazelles (*Gazella dorcas neglecta*) in North Ferlo, Senegal. *J. Arid Environ.* 97:176–181.
- Armstrong, D. P., and P. J. Seddon. 2008. Directions in reintroduction biology. *Trends Ecol. Evol.* 23:20–25.
- Attum, O., and T. Mahmoud. 2012. Dorcas gazelle and livestock use of trees according to size in a hyper-arid landscape. *J. Arid Environ.* 76:49–53.
- Bakker, E. S., and H. Olff. 2003. The impact of different-sized herbivores on recruitment for subordinate herbs in grasslands. *J. Veg. Sci.* 14:465–474.
- Bemadjim, N. E., J. E. Newby, A. Desbiez, C. Lees, and P. Miller, eds. 2012. Technical workshop on the reintroduction of scimitar-horned oryx to the Ouadi Rimé-Ouadi Achim Game Reserve, Chad. IUCN/SSC Conservation Breeding Specialist Group, Apple Valley, USA.
- Beudels, R. C., P. Devillers, R.-M. Lafontaine, J. Devillers-Terschuren, and M.-O. Beudels. 2005. Sahelo-Saharan Antelopes: Status and Perspectives. Report on the conservation status of the six Sahelo-Saharan Antelopes. 2nd ed. UNEP/CMS Secretariat, Bonn, Switzerland.
- Bowland, A. E., and M. R. Perrin. 1994. Density estimate methods for blue duikers *Philantomba monticola* and red duikers *Cephalophus natalensis* in Natal, South Africa. *J. Afr. Zool.* 108:505–519.
- Boyce, M. S., C. J. Johnson, E. H. Merrill, S. E. Nielsen, E. J. Solberg, and B. van Moorter. 2016. REVIEW: can habitat selection predict abundance? *J. Anim. Ecol.* 85:11–20.
- Brown, J. S., J. W. Laundré, and M. Gurung. 1999. The ecology of fear: optimal foraging, game theory, and trophic interactions. *J. Mammal.* 80:385–399.
- Burgess, N. D., J. D. A. Hales, T. H. Ricketts, and E. Dinerstein. 2006. Factoring species, non-species values and threats into biodiversity prioritisation across the ecoregions of Africa and its islands. *Biol. Conserv.* 127: 383–401.
- Burnham, K. P., and D. R. Anderson. 2002. Model selection and multimodel inference: a practical information-theoretic approach, 2nd ed. Springer-Verlag, New York, USA.
- Byers, J. A. 1997. American pronghorn: social adaptations and the ghosts of predators past. University of Chicago Press, Chicago, USA.
- Cromsigt, J. P. G. M., and H. Olff. 2006. Resource partitioning among savanna grazers mediated by local heterogeneity: an experimental approach. *Ecology* 87:1532–1541.
- Cromsigt, J. P. G. M., H. H. T. Prins, and H. Olff. 2009. Habitat heterogeneity as a driver of ungulate diversity and distribution patterns: interaction of body mass and digestive strategy. *Divers. Distrib.* 15:513–522.
- Danell, K., R. Bergström, P. Duncan, and J. Pastor, eds. 2006. Large herbivore ecology, ecosystem dynamics and conservation. Cambridge University Press, Cambridge, UK.
- Darmon, G., C. Calenge, A. Loison, J.-M. Jullien, D. Maillard, and J.-F. Lopez. 2012. Spatial distribution and habitat selection in coexisting species of mountain ungulates. *Ecography* 35:44–53.
- DeCesare, N. J., M. Hebblewhite, M. Bradley, D. Hervieux, L. Neufeld, and M. Musiani. 2014. Linking habitat selection and predation risk to spatial variation in survival. *J. Anim. Ecol.* 83:343–352.
- Durant, S. M., T. Wachter, S. Bashir, R. Woodroffe, P. De Ornellas, C. Ransom, *et al.* 2014. Fiddling in biodiversity

- hotspots while deserts burn? Collapse of the Sahara's megafauna. *Divers. Distrib.* 20:114–122.
- Durant, S. M., M. S. Becker, S. Creel, S. Bashir, A. J. Dickman, R. C. Beudels-Jamar, et al. 2015. Developing fencing policies for dryland ecosystems. *J. Appl. Ecol.* 52:544–551.
- Farnsworth, K. D., S. Focardi, and J. A. Beecham. 2002. Grassland herbivore interactions: how do grazers coexist? *Am. Nat.* 159:24–39.
- Freeland, W. J., and D. H. Janzen. 1974. Strategies in herbivory by mammals: the role of plant secondary compounds. *Am. Nat.* 108:269–289.
- Gaillard, J.-M., M. Hebblewhite, A. Loison, M. Fuller, R. Powell, M. Basille, et al. 2010. Habitat-performance relationships: finding the right metric at a given spatial scale. *Philos. Trans. R. Soc. Lond. B Biol. Sci.* 365:2255–2265.
- Gilbert, T., and T. Woodfine, eds. 2004. *The biology, husbandry and conservation of scimitar-horned Oryx (Oryx dammah)*. Marwell Wildlife, Winchester, UK.
- Godsoe, W., R. Murray, and M. J. Plank. 2015. The effect of competition on species' distributions depends on coexistence, rather than scale alone. *Ecography* 38:1071–1079.
- Henley, S. R., and D. Ward. 2006. An evaluation of diet quality in two desert ungulates exposed to hyper-arid conditions. *Afr. J. Range Forage Sci.* 23:185–190.
- Hermis, D. A., and W. J. Mattson. 1994. The dilemma of plants: to grow or defend. *Q. Rev. Biol.* 67:283–335.
- Illius, A. W., and T. G. O'Connor. 2000. Resource heterogeneity and ungulate population dynamics. *Oikos* 89:283–294.
- Islam, Z. M., K. Ismail, and A. Boug. 2010. Catastrophic die-off of globally threatened Arabian Oryx and Sand Gazelle in the fenced protected area of the arid central Saudi Arabia. *J. Threat. Taxa* 2:677–684.
- IUCN. in press. *Gazella dorcas*. The IUCN red list of threatened species 2016. IUCN/SSC Antelope Specialist Group, IUCN, Gland, Switzerland and Cambridge, UK.
- Kingdon, J., D. Happold, T. Butynski, M. Hoffman, M. Happold, and J. Kalina, eds. 2013. *Mammals of Africa*, volume VI: pigs, hippopotamuses, chevrotain, giraffes, deer and bovinds. Bloomsbury Publishing, London, UK.
- Kittle, A. M., J. M. Fryxell, G. E. Desy, and J. Hamr. 2008. The scale-dependent impact of wolf predation risk on resource selection by three sympatric ungulates. *Oecologia* 157:163–175.
- Krasnov, B., G. Shenbrot, I. Khokhlova, and E. Ivanitskaya. 1996. Spatial patterns of rodent communities in the Ramon erosion cirque, Negev Highlands, Israel. *J. Arid Environ.* 32:319–327.
- Laing, S. E., S. T. Buckland, R. W. Burn, D. Lambie, and A. Amphlett. 2003. Dung and nest surveys: estimating decay rates. *J. Appl. Ecol.* 40:1102–1111.
- Le Houérou, H. N. 2001. Biogeography of the arid steppeland north of the Sahara. *J. Arid Environ.* 48:103–128.
- Loarie, S. R., P. B. Duffy, H. Hamilton, G. P. Asner, C. B. Field, and D. D. Ackerly. 2009. The velocity of climate change. *Nature* 462:1052–1055.
- Mace, G. M., H. Masundire, and J. E. M. Baillie. 2005. Biodiversity. Pp. 77–122 in B. Scholes and R. Hassan, eds. *Ecosystems and human-well being: current state and trends*. Island Press, Washington DC, USA.
- Manly, B. F. J., L. L. McDonald, D. L. Thomas, T. L. McDonald, and W. P. Erickson. 2002. *Resource selection by animals*, 2nd ed. Kluwer Academic Publishers, Dordrecht, Netherlands.
- Marques, F. C., S. T. Buckland, D. Goffin, C. E. Dixon, D. L. Borchers, B. A. Mayle, et al. 2001. Estimating deer abundance from line transect surveys of dung: sika deer in southern Scotland. *J. Appl. Ecol.* 38:349–363.
- Martin, T. E. 2014. Consequences of habitat change and resource selection specialization for population limitation in cavity-nesting birds. *J. Appl. Ecol.* 52:475–485.
- Mazerolle, M. J. 2006. Improving data analysis in herpetology: using Akaike's Information Criterion (AIC) to assess the strength of biological hypotheses. *Amphibia-Reptilia* 27:169–180.
- Mésochina, P., and R. S. C. Cooke. 2015. *Antelope Database*. Available at http://cmsdata.iucn.org/downloads/asg_summary_database.xlsx (accessed 10 February 2015).
- Noy-Meir, I. 1973. Desert ecosystems: environment and producers. *Annu. Rev. Ecol. Syst.* 4:25–51.
- Oedekoven, C. S., S. T. Buckland, M. L. Mackenzie, K. O. Evans, and L. W. Burger. 2013. Improving distance sampling: accounting for covariates and non-independency between sampled sites. *J. Appl. Ecol.* 50:786–793.
- Ostfeld, R. S., and F. Keesing. 2000. Pulsed resources and community dynamics of consumers in terrestrial ecosystems. *Trends Ecol. Evol.* 15:232–237.
- Owen-Smith, N. 1985. Niche separation amongst African ungulates, Pp. 161–171 in E. S. Vrba, ed. *Species and speciation*. Transvaal Museum, Pretoria, South Africa.
- Ozenda, P. 2004. *Flore et végétation du Sahara*. Centre national de la recherche scientifique, Paris, France.
- Post, E., and C. Pedersen. 2008. Opposing plant community responses to warming with and without herbivores. *Proc. Natl. Acad. Sci. USA* 105:12353–12358.
- R Core Team. 2014. *R: a language and environment for statistical computing*. R Foundation for Statistical Computing, Vienna, Austria. Available at <http://cran.ma.imperial.ac.uk/> (accessed 14 January 2015).
- Safriel, U., Z. Adeel, D. Niemeijer, J. Puigdefabregas, R. White, R. Lal, et al. 2005. Dryland systems. Pp. 623–662 in R. Hassan, R. Scholes and N. Ash, eds. *Millennium ecosystem assessment: ecosystems and human well-being: current state and trends: findings of the condition*

- and trends working group. Island Press, Washington DC, USA.
- Schulz, E., A. Abichou, A. Adamou, A. Ballaouche, and I. Ousseïni. 2009. The desert in the Sahara: transitions and boundaries. Pp. 63–89 *in* R. Braumhauer and J. Runge. Palaeoecology of Africa and the surrounding Islands. Taylor & Francis Group, London, UK.
- Schwinning, S., and O. E. Sala. 2004. Hierarchy of responses to resource pulses in arid and semi-arid ecosystems. *Oecologia* 141:211–220.
- Scillitani, L., G. Darmon, A. Monaco, G. Cocca, E. Sturaro, L. Rossi, et al. 2013. Habitat selection in translocated gregarious ungulate species: an interplay between sociality and ecological requirements. *J. Wildl. Manag.* 77:761–769.
- Sinclair, A. R. E., S. Mduma, and J. S. Brashares. 2003. Patterns of predation in a diverse predator-prey system. *Nature* 425:288–290.
- Tabeni, S., and R. A. Ojeda. 2005. Ecology of the Monte Desert small mammals in disturbed and undisturbed habitats. *J. Arid Environ.* 63:244–255.
- Tews, J., U. Brose, V. Grimm, K. Tielbörger, M. C. Wichmann, M. Schwager, et al. 2004. Animal species diversity driven by habitat heterogeneity/diversity: the importance of keystone structures. *J. Biogeogr.* 31:79–92.
- Thomas, R. J. 2008. Opportunities to reduce the vulnerability of dryland farmers in Central and West Asia and North Africa to climate change. *Agric. Ecosyst. Environ.* 126:36–45.
- Thomas, L., S. T. Buckland, E. A. Rexstad, J. L. Laake, S. Strindberg, S. L. Hedley, et al. 2010. Distance software: design and analysis of distance sampling surveys for estimating population size. *J. Appl. Ecol.* 47:5–14.
- Turner, M. G., S. M. Pearson, W. H. Romme, and L. L. Wallace. 1997. Landscape heterogeneity and ungulate dynamics: what spatial scales are important? Pp. 331–348 *in* J. A. Bissonette, ed. *Wildlife and landscape ecology*. Springer, New York, USA.
- Voeten, M. M., and H. H. T. Prins. 1999. Resource partitioning between sympatric wild and domestic herbivores in the Tarangire region of Tanzania. *Oecologia* 120:287–294.
- Westoby, M. 1978. What are the biological bases of varied diets? *Am. Nat.* 112:627–631.
- Woodfine, T., K. Zahzah, A. Chetoui, T. Gilbert, and G. L. D’Alterio. 2009. Reintroduction of scimitar-horned Oryx to Dghoumes National Park, Tunisia. Direction Générale des Forêts, Tunis, Tunisia.
- Yom-Tov, Y., H. Mendelssohn, and C. P. Groves. 1995. *Gazella dorcas*. *Mamm. Spec.* 491:1–6.

Supporting Information

Additional Supporting Information may be found online in the supporting information tab for this article:

Appendix S1. R code for a generalised linear mixed-effect model via a log-link with a Poisson error structure following the integrated likelihood approach.

Appendix S2. Estimating defecation rates for the focal species.

Appendix S3. Estimated and prospective decay rates for the focal species.

Appendix S4. Candidate models for scimitar-horned oryx, dorcas gazelle and both species combined.

Appendix S5. A posteriori habitat types based on cluster-analysis and habitat characteristics.

Appendix S6. Density estimates and 95% confidence intervals produced in DISTANCE for the a priori and a posteriori habitats.