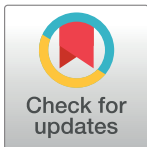


CORRECTION

## Correction: Blast resistance in Indian rice landraces: Genetic dissection by gene specific markers

**Manoj Kumar Yadav, S. Aravindan, Umakanta Ngangkham, S. Raghu, S. R. Prabhukarthikeyan, U. Keerthana, B. C. Marndi, Totan Adak, Susmita Munda, Rupesh Deshmukh, D. Pramesh, Sanghamitra Samantaray, P. C. Rath**

The images for Figs 1–5 are incorrectly switched. The image that appears as Fig 5 should be Fig 1. The image that appears as Fig 1 should be Fig 2. The image that appears as Fig 2 should be Fig 3. The image that appears as Fig 3 should be Fig 4. The image that appears as Fig 4 should be Fig 5. The figure captions appear in the correct order. Please view the correct figures here.

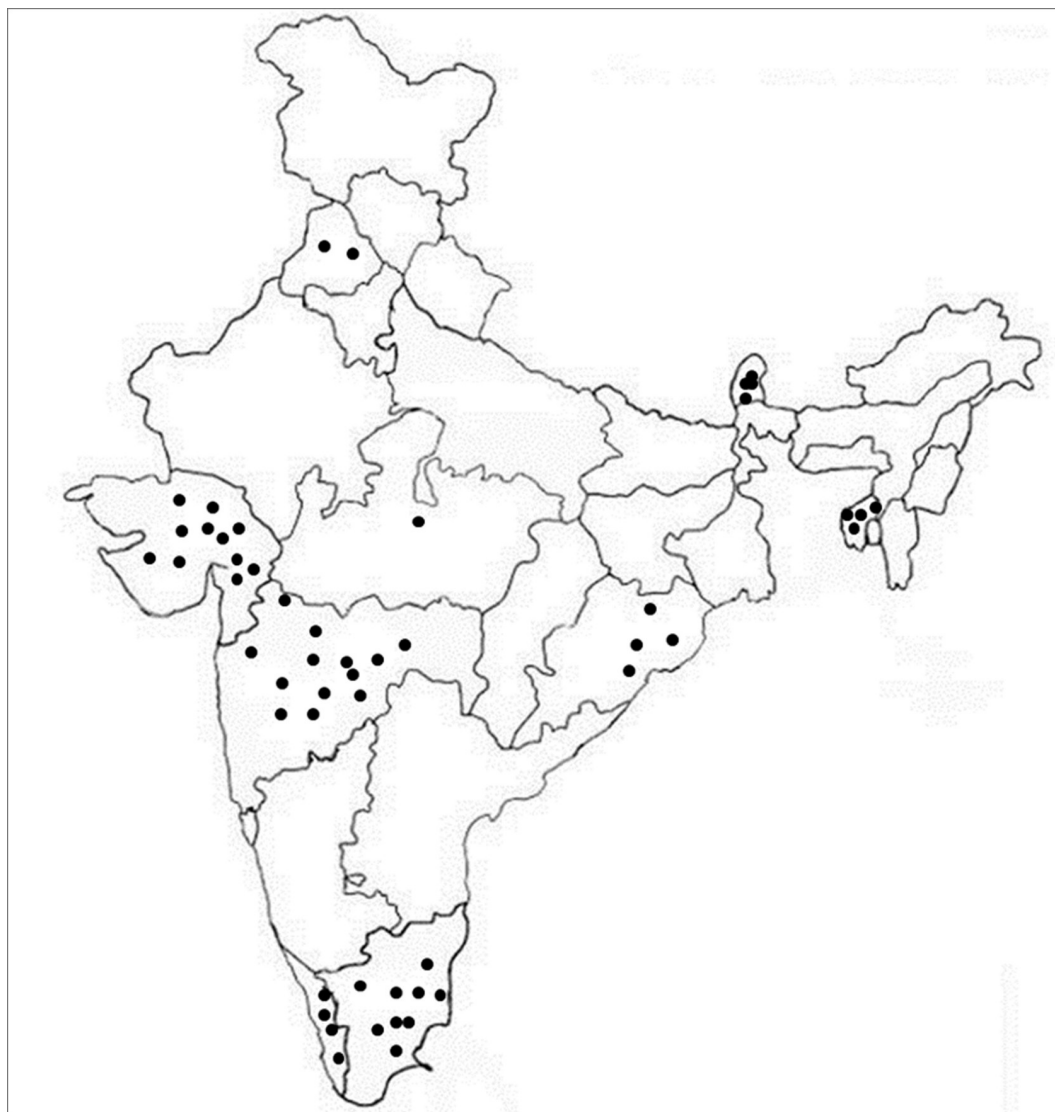


 OPEN ACCESS

**Citation:** Yadav MK, Aravindan S, Ngangkham U, Raghu S, Prabhukarthikeyan SR, Keerthana U, et al. (2019) Correction: Blast resistance in Indian rice landraces: Genetic dissection by gene specific markers. PLoS ONE 14(3): e0213566. <https://doi.org/10.1371/journal.pone.0213566>

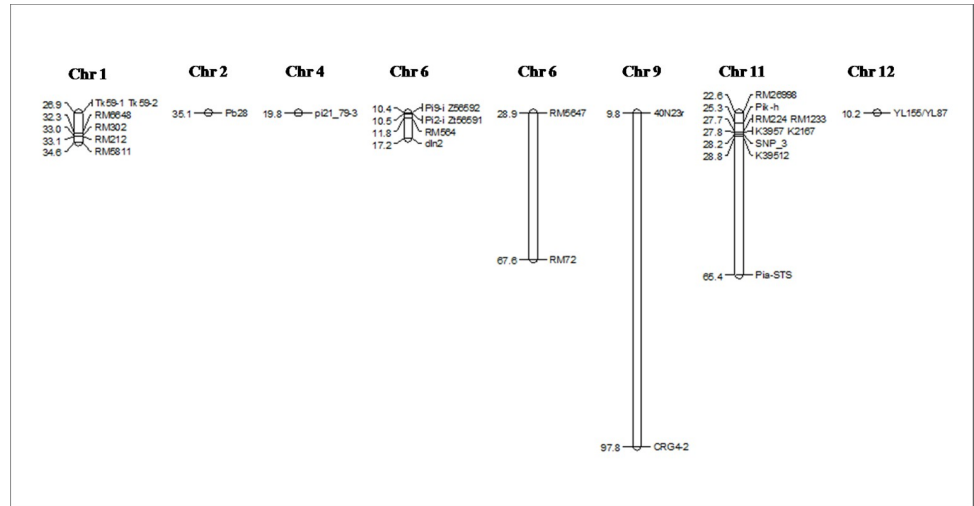
**Published:** March 5, 2019

**Copyright:** © 2019 Yadav et al. This is an open access article distributed under the terms of the [Creative Commons Attribution License](https://creativecommons.org/licenses/by/4.0/), which permits unrestricted use, distribution, and reproduction in any medium, provided the original author and source are credited.



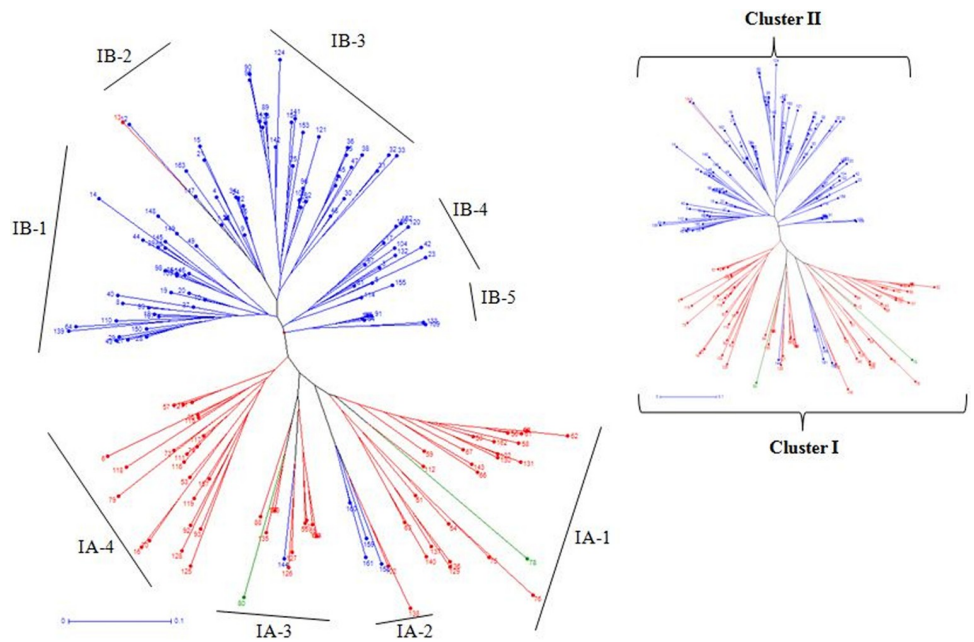
**Fig 1. Diagrammatic representation of rice landraces belonged to different states of India.**

<https://doi.org/10.1371/journal.pone.0213566.g001>



**Fig 2. Graphical representation of blast R genes distribution on chromosomes showing the physical location.** The names of the markers are given on the right side and the physical positions on the left side of the map.

<https://doi.org/10.1371/journal.pone.0213566.g002>



**Fig 3. Unrooted neighbor joining tree of 161 rice landraces constructed based on 28 markers data.** (Landraces represented in colors corresponding to the sub-population on the basis of population structure (SG1-blue; SG2-red, and admixture-green).

<https://doi.org/10.1371/journal.pone.0213566.g003>

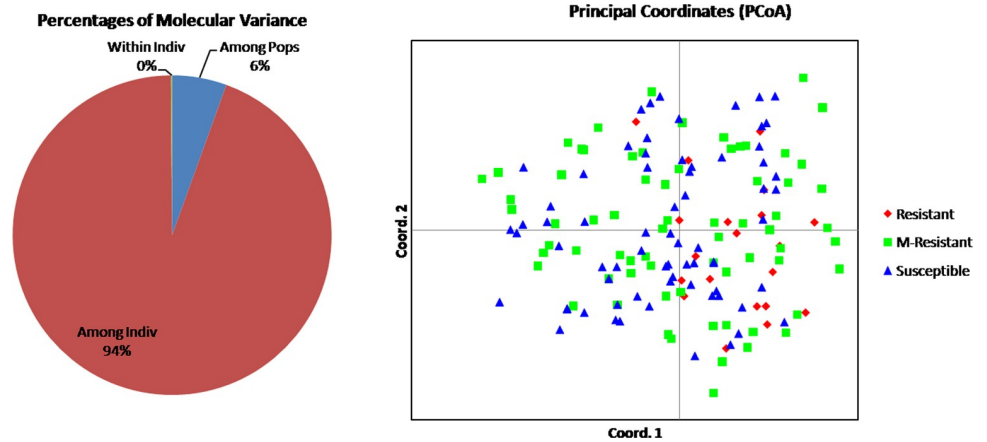


Fig 4. Analysis of molecular variance (AMOVA) and Principal Coordinate Analysis (PCoA) of 161 Indian landraces based on linked/functional markers.

<https://doi.org/10.1371/journal.pone.0213566.g004>

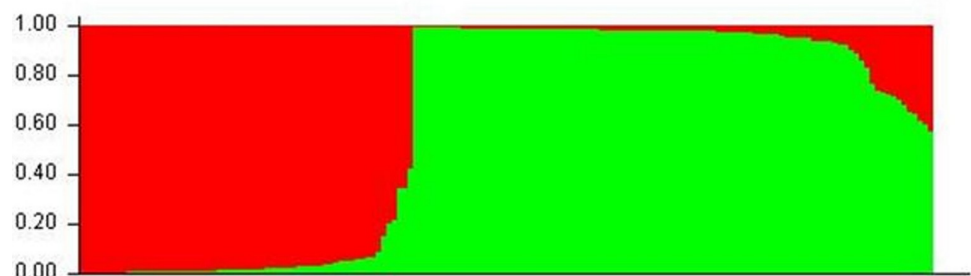
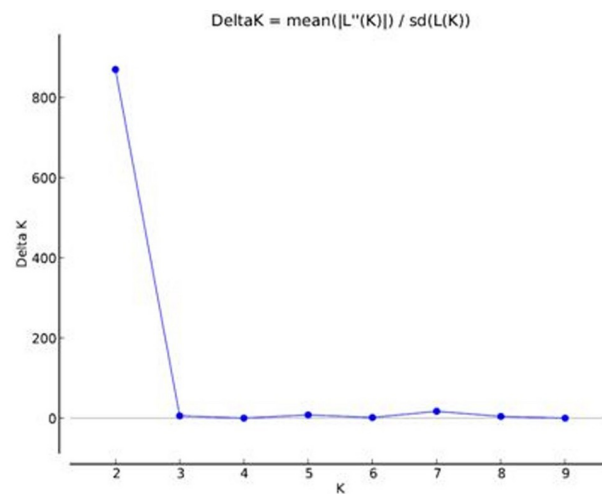


Fig 5. Population structure of Indian landraces based on 28 marker for blast resistance genes.

<https://doi.org/10.1371/journal.pone.0213566.g005>

## Reference

1. Yadav MK, Aravindan S, Ngangkham U, Raghu S, Prabhukarthikeyan SR, Keerthana U, et al. (2019) Blast resistance in Indian rice landraces: Genetic dissection by gene specific markers. PLoS ONE 14 (1): e0211061. <https://doi.org/10.1371/journal.pone.0211061> PMID: 30673751