

2-Amino-4-(4-fluorophenyl)-6-(naphthalen-1-yl)pyridine-3-carbonitrile

 Jian-Qiang Wang,^a Shi-Gui Tang^b and Cheng Guo^{a*}

^aCollege of Science, Nanjing University of Technology, Nanjing 210009, People's Republic of China, and ^bBiotechnology and Pharmaceutical Engineering, Nanjing University of Technology, Nanjing 210009, People's Republic of China

Correspondence e-mail: guocheng@njut.edu.cn

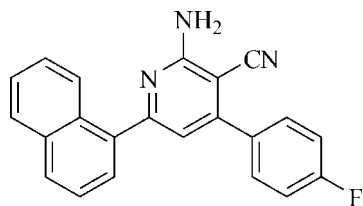
Received 21 November 2010; accepted 3 December 2010

Key indicators: single-crystal X-ray study; $T = 292$ K; mean $\sigma(\text{C}-\text{C}) = 0.004$ Å; R factor = 0.062; wR factor = 0.177; data-to-parameter ratio = 13.3.

The title compound, $\text{C}_{22}\text{H}_{14}\text{FN}_3$, was prepared by a one-pot condensation using malononitrile, an aromatic aldehyde, a methyl ketone and ammonium acetate as reactants under microwave irradiation. The pyridine ring is twisted with respect to the benzene ring and the naphthalene ring system, making dihedral angles of 41.9 (1) and 45.2 (1)°, respectively. In the crystal, molecules are connected *via* intermolecular $\text{N}-\text{H}\cdots\text{N}$ and $\text{C}-\text{H}\cdots\text{F}$ hydrogen bonds, forming a three-dimensional network.

Related literature

For the use of 2-amino-3-cyanopyridines as intermediates in the preparation of heterocyclic compounds, see: Shishoo *et al.* (1983). For bond-length data, see: Allen *et al.* (1987).



Experimental

Crystal data

$\text{C}_{22}\text{H}_{14}\text{FN}_3$
 $M_r = 339.36$

Monoclinic, $P2_1/c$
 $a = 14.531$ (3) Å

$b = 8.0900$ (16) Å
 $c = 15.516$ (3) Å
 $\beta = 110.04$ (3)°
 $V = 1713.6$ (6) Å³
 $Z = 4$

Mo $K\alpha$ radiation
 $\mu = 0.09$ mm⁻¹
 $T = 292$ K
 $0.30 \times 0.20 \times 0.10$ mm

Data collection

Enraf-Nonius CAD-4 diffractometer
 Absorption correction: ψ scan (North *et al.*, 1968)
 $T_{\min} = 0.974$, $T_{\max} = 0.991$
 3274 measured reflections

3144 independent reflections
 2046 reflections with $I > 2\sigma(I)$
 $R_{\text{int}} = 0.056$
 3 standard reflections every 200 reflections
 intensity decay: 1%

Refinement

$R[F^2 > 2\sigma(F^2)] = 0.062$
 $wR(F^2) = 0.177$
 $S = 1.00$
 3144 reflections

236 parameters
 H-atom parameters constrained
 $\Delta\rho_{\max} = 0.20$ e Å⁻³
 $\Delta\rho_{\min} = -0.29$ e Å⁻³

Table 1

Hydrogen-bond geometry (Å, °).

$D-H\cdots A$	$D-H$	$H\cdots A$	$D\cdots A$	$D-H\cdots A$
$\text{N2}-\text{H2A}\cdots\text{N1}^i$	0.86	2.33	3.149 (3)	158
$\text{C20}-\text{H20A}\cdots\text{F}^{\text{ii}}$	0.93	2.50	3.284 (4)	142

Symmetry codes: (i) $-x + 2, -y + 1, -z$; (ii) $x + 1, -y + \frac{1}{2}, z + \frac{1}{2}$.

Data collection: *CAD-4 Software* (Enraf-Nonius, 1985); cell refinement: *CAD-4 Software*; data reduction: *XCAD4* (Harms & Wocadlo, 1995); program(s) used to solve structure: *SHELXS97* (Sheldrick, 2008); program(s) used to refine structure: *SHELXL97* (Sheldrick, 2008); molecular graphics: *SHELXTL* (Sheldrick, 2008); software used to prepare material for publication: *SHELXTL*.

We gratefully acknowledge the financial support from the Youth Foundation of Nanjing University of Technology (39704011) and the Analysis Center of Nanjing University.

Supplementary data and figures for this paper are available from the IUCr electronic archives (Reference: VM2063).

References

- Allen, F. H., Kennard, O., Watson, D. G., Brammer, L., Orpen, A. G. & Taylor, R. (1987). *J. Chem. Soc. Perkin Trans. 2*, pp. S1–19.
- Enraf-Nonius (1985). *CAD-4 Software*. Enraf-Nonius, Delft, The Netherlands.
- Harms, K. & Wocadlo, S. (1995). *XCAD4*. University of Marburg, Germany.
- North, A. C. T., Phillips, D. C. & Mathews, F. S. (1968). *Acta Cryst.* **A24**, 351–359.
- Sheldrick, G. M. (2008). *Acta Cryst.* **A64**, 112–122.
- Shishoo, C. J., Devani, M. B., Bhadti, V. S., Ananthan, S. & Ullas, G. V. (1983). *Tetrahedron Lett.* pp. 4611–4612.

supplementary materials

Acta Cryst. (2011). E67, o56 [doi:10.1107/S1600536810050804]

2-Amino-4-(4-fluorophenyl)-6-(naphthalen-1-yl)pyridine-3-carbonitrile

J.-Q. Wang, S.-G. Tang and C. Guo

Comment

Derivatives of 2-amino-3-cyanopyridine are important and useful intermediates in preparing a variety of heterocyclic compounds (Shishoo *et al.*, 1983). Therefore, the synthesis of 2-amino-3-cyanopyridine derivatives attracts much interest in organic chemistry. Here, the single-crystal structure of the title compound (I), C₂₂H₁₄FN₃, is reported.

The title compound (Fig. 1) consists of a pyridine ring bearing a 4-fluoro phenyl at C7, a naphthyl at C10, an amino group at C9, and a cyano group at C8. The pyridine ring is twisted with respect to the benzene ring and naphthalene ring, with dihedral angles of 41.9 (1)° and 45.2 (1)°, respectively. The bond lengths and angles are within the reported values (Allen *et al.*, 1987). Intermolecular N—H···N and C—H···F hydrogen bonds (Table 1, Fig. 2), and C—H···π and π–π stacking interactions help to stabilize the crystal structure.

Experimental

The title compound (I) was prepared from a mixture of 4-fluorobenzaldehyde (2 mmol), malononitrile (2 mmol), 1-naphthaldehyde (2 mmol) and ammonium acetate (16 mmol) under microwave irradiation (6 min, WF-4000M microwave reaction system). After cooling to room temperature, the resulting solid product was filtered off and recrystallized from methanol to give compound (I). Colorless single crystals suitable for X-ray analysis were obtained by dissolving (I) (0.5 g) in methanol (20 ml) and slowly evaporating the solvent at room temperature for a period of about two weeks.

Refinement

H atoms were positioned geometrically, with C—H = 0.93 Å and N—H = 0.86 Å for aromatic and amino H atoms, and constrained to ride on their parent atoms, with $U_{\text{iso}}(\text{H}) = 1.2U_{\text{eq}}(\text{C/N})$.

Figures

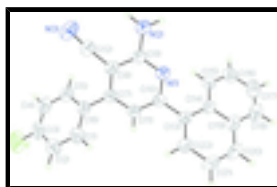


Fig. 1. The molecular structure of (I), with the atom-numbering scheme and displacement ellipsoids at the 30% probability level.

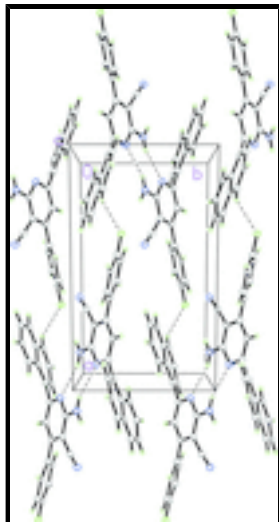


Fig. 2. A packing diagram of (I). Intermolecular hydrogen bonds are shown as dashed lines.

2-Amino-4-(4-fluorophenyl)-6-(naphthalen-1-yl)pyridine-3-carbonitrile

Crystal data

$C_{22}H_{14}FN_3$

$M_r = 339.36$

Monoclinic, $P2_1/c$

Hall symbol: -P 2ybc

$a = 14.531(3) \text{ \AA}$

$b = 8.0900(16) \text{ \AA}$

$c = 15.516(3) \text{ \AA}$

$\beta = 110.04(3)^\circ$

$V = 1713.6(6) \text{ \AA}^3$

$Z = 4$

$F(000) = 704$

$D_x = 1.315 \text{ Mg m}^{-3}$

Melting point: 422.15 K

Mo $K\alpha$ radiation, $\lambda = 0.71073 \text{ \AA}$

Cell parameters from 25 reflections

$\theta = 9\text{--}13^\circ$

$\mu = 0.09 \text{ mm}^{-1}$

$T = 292 \text{ K}$

Block, colourless

$0.30 \times 0.20 \times 0.10 \text{ mm}$

Data collection

Enraf-Nonius CAD-4
diffractometer

Radiation source: fine-focus sealed tube

graphite

$\omega/2\theta$ scans

Absorption correction: ψ scan
(North *et al.*, 1968)

$T_{\min} = 0.974$, $T_{\max} = 0.991$

3274 measured reflections

3144 independent reflections

2046 reflections with $I > 2\sigma(I)$

$R_{\text{int}} = 0.056$

$\theta_{\max} = 25.4^\circ$, $\theta_{\min} = 1.5^\circ$

$h = 0 \rightarrow 17$

$k = 0 \rightarrow 9$

$l = -18 \rightarrow 17$

3 standard reflections every 200 reflections

intensity decay: 1%

Refinement

Refinement on F^2

Secondary atom site location: difference Fourier map

Least-squares matrix: full

$$R[F^2 > 2\sigma(F^2)] = 0.062$$

$$wR(F^2) = 0.177$$

$$S = 1.00$$

3144 reflections

236 parameters

0 restraints

Primary atom site location: structure-invariant direct methods

Hydrogen site location: inferred from neighbouring sites

H-atom parameters constrained

$$w = 1/[\sigma^2(F_o^2) + (0.1P)^2 + 0.2P]$$

$$\text{where } P = (F_o^2 + 2F_c^2)/3$$

$$(\Delta/\sigma)_{\max} < 0.001$$

$$\Delta\rho_{\max} = 0.20 \text{ e } \text{\AA}^{-3}$$

$$\Delta\rho_{\min} = -0.28 \text{ e } \text{\AA}^{-3}$$

Extinction correction: *SHELXL97* (Sheldrick, 2008),

$$F_c^* = kFc[1 + 0.001xFc^2\lambda^3/\sin(2\theta)]^{-1/4}$$

Extinction coefficient: 0.016 (3)

Special details

Geometry. All e.s.d.'s (except the e.s.d. in the dihedral angle between two l.s. planes) are estimated using the full covariance matrix. The cell e.s.d.'s are taken into account individually in the estimation of e.s.d.'s in distances, angles and torsion angles; correlations between e.s.d.'s in cell parameters are only used when they are defined by crystal symmetry. An approximate (isotropic) treatment of cell e.s.d.'s is used for estimating e.s.d.'s involving l.s. planes.

Refinement. Refinement of F^2 against ALL reflections. The weighted R -factor wR and goodness of fit S are based on F^2 , conventional R -factors R are based on F , with F set to zero for negative F^2 . The threshold expression of $F^2 > \sigma(F^2)$ is used only for calculating R -factors(gt) *etc.* and is not relevant to the choice of reflections for refinement. R -factors based on F^2 are statistically about twice as large as those based on F , and R -factors based on ALL data will be even larger.

Fractional atomic coordinates and isotropic or equivalent isotropic displacement parameters (\AA^2)

	<i>x</i>	<i>y</i>	<i>z</i>	$U_{\text{iso}}^*/U_{\text{eq}}$
F	0.33760 (12)	0.1683 (3)	0.00030 (15)	0.1049 (8)
N1	0.91754 (14)	0.3544 (2)	0.03593 (12)	0.0425 (5)
C1	0.5928 (2)	0.2725 (4)	0.0869 (2)	0.0601 (8)
H1B	0.6403	0.3032	0.1419	0.072*
N2	0.87074 (16)	0.4912 (3)	-0.10104 (14)	0.0566 (6)
H2A	0.9316	0.5106	-0.0915	0.068*
H2B	0.8267	0.5267	-0.1502	0.068*
C2	0.4983 (2)	0.2457 (4)	0.0839 (2)	0.0700 (9)
H2C	0.4811	0.2591	0.1360	0.084*
N3	0.6218 (2)	0.4965 (4)	-0.19941 (17)	0.0838 (9)
C3	0.4303 (2)	0.1989 (4)	0.0021 (3)	0.0694 (9)
C4	0.4519 (2)	0.1766 (4)	-0.0751 (2)	0.0673 (9)
H4A	0.4039	0.1422	-0.1291	0.081*
C5	0.54649 (19)	0.2056 (4)	-0.07242 (19)	0.0565 (7)
H5A	0.5622	0.1927	-0.1253	0.068*
C6	0.61841 (18)	0.2543 (3)	0.00910 (17)	0.0485 (6)
C7	0.72116 (18)	0.2857 (3)	0.01511 (16)	0.0450 (6)
C8	0.74512 (17)	0.3731 (3)	-0.05147 (15)	0.0453 (6)
C9	0.84442 (17)	0.4055 (3)	-0.03910 (15)	0.0424 (6)
C10	0.89413 (17)	0.2700 (3)	0.09979 (15)	0.0402 (6)

supplementary materials

C11	0.79866 (18)	0.2324 (3)	0.09168 (16)	0.0457 (6)
H11A	0.7861	0.1716	0.1373	0.055*
C12	0.6732 (2)	0.4389 (4)	-0.13286 (18)	0.0550 (7)
C13	0.97766 (17)	0.2280 (3)	0.18524 (15)	0.0404 (6)
C14	1.06861 (17)	0.1664 (3)	0.18259 (15)	0.0412 (6)
C15	1.08360 (19)	0.1133 (3)	0.10156 (17)	0.0491 (6)
H15A	1.0318	0.1182	0.0461	0.059*
C16	1.1715 (2)	0.0555 (4)	0.1025 (2)	0.0650 (8)
H16A	1.1792	0.0200	0.0484	0.078*
C17	1.2509 (2)	0.0492 (4)	0.1853 (2)	0.0746 (9)
H17A	1.3117	0.0130	0.1856	0.090*
C18	1.2395 (2)	0.0954 (4)	0.2644 (2)	0.0667 (8)
H18A	1.2928	0.0899	0.3187	0.080*
C19	1.14842 (18)	0.1521 (3)	0.26713 (17)	0.0479 (6)
C20	1.1338 (2)	0.1915 (4)	0.34944 (17)	0.0582 (8)
H20A	1.1861	0.1836	0.4044	0.070*
C21	1.0458 (2)	0.2407 (4)	0.35084 (17)	0.0586 (8)
H21A	1.0369	0.2618	0.4064	0.070*
C22	0.9674 (2)	0.2599 (3)	0.26778 (17)	0.0504 (7)
H22A	0.9070	0.2952	0.2691	0.060*

Atomic displacement parameters (\AA^2)

	U^{11}	U^{22}	U^{33}	U^{12}	U^{13}	U^{23}
F	0.0381 (10)	0.142 (2)	0.1317 (18)	0.0019 (11)	0.0249 (11)	0.0234 (15)
N1	0.0410 (11)	0.0474 (12)	0.0378 (11)	0.0010 (9)	0.0116 (9)	0.0053 (9)
C1	0.0453 (16)	0.076 (2)	0.0558 (16)	-0.0088 (14)	0.0141 (13)	-0.0064 (15)
N2	0.0474 (12)	0.0720 (16)	0.0473 (12)	0.0008 (11)	0.0124 (10)	0.0190 (11)
C2	0.0548 (19)	0.089 (2)	0.072 (2)	0.0004 (17)	0.0296 (17)	-0.0007 (18)
N3	0.0727 (18)	0.107 (2)	0.0574 (15)	0.0126 (16)	0.0032 (13)	0.0246 (16)
C3	0.0340 (15)	0.081 (2)	0.091 (2)	0.0045 (14)	0.0193 (16)	0.0118 (19)
C4	0.0428 (16)	0.075 (2)	0.068 (2)	-0.0008 (15)	-0.0019 (14)	0.0053 (17)
C5	0.0471 (16)	0.0647 (18)	0.0512 (16)	-0.0013 (13)	0.0084 (13)	0.0002 (13)
C6	0.0408 (14)	0.0529 (16)	0.0486 (15)	-0.0005 (12)	0.0110 (12)	0.0025 (12)
C7	0.0433 (14)	0.0493 (15)	0.0402 (13)	-0.0029 (11)	0.0114 (11)	-0.0021 (11)
C8	0.0432 (14)	0.0498 (15)	0.0389 (13)	0.0013 (11)	0.0089 (11)	0.0012 (11)
C9	0.0451 (14)	0.0452 (14)	0.0361 (12)	0.0005 (11)	0.0129 (11)	0.0042 (11)
C10	0.0427 (14)	0.0390 (13)	0.0375 (12)	0.0005 (11)	0.0122 (11)	0.0017 (10)
C11	0.0453 (14)	0.0523 (15)	0.0393 (13)	-0.0046 (12)	0.0141 (11)	0.0053 (11)
C12	0.0497 (15)	0.0654 (18)	0.0464 (15)	0.0019 (14)	0.0119 (13)	0.0058 (14)
C13	0.0435 (13)	0.0395 (13)	0.0356 (12)	-0.0039 (11)	0.0101 (10)	0.0007 (10)
C14	0.0433 (14)	0.0362 (13)	0.0399 (13)	-0.0049 (11)	0.0088 (11)	0.0025 (11)
C15	0.0506 (15)	0.0503 (15)	0.0460 (14)	0.0005 (12)	0.0162 (12)	0.0008 (12)
C16	0.0658 (19)	0.0667 (19)	0.0694 (19)	0.0075 (16)	0.0320 (16)	-0.0025 (15)
C17	0.0518 (18)	0.079 (2)	0.091 (2)	0.0124 (16)	0.0209 (18)	-0.0018 (19)
C18	0.0486 (17)	0.067 (2)	0.069 (2)	0.0051 (15)	-0.0003 (14)	0.0018 (16)
C19	0.0459 (15)	0.0411 (14)	0.0477 (15)	-0.0033 (12)	0.0044 (11)	0.0028 (11)
C20	0.0617 (18)	0.0585 (17)	0.0378 (14)	-0.0053 (14)	-0.0044 (13)	-0.0006 (12)

C21	0.073 (2)	0.0647 (18)	0.0340 (14)	-0.0004 (15)	0.0122 (13)	-0.0050 (12)
C22	0.0535 (16)	0.0554 (16)	0.0408 (14)	0.0007 (13)	0.0142 (12)	-0.0001 (12)

Geometric parameters (Å, °)

F—C3	1.360 (3)	C10—C11	1.383 (3)
N1—C10	1.340 (3)	C10—C13	1.498 (3)
N1—C9	1.344 (3)	C11—H11A	0.9300
C1—C2	1.376 (4)	C13—C22	1.364 (3)
C1—C6	1.387 (4)	C13—C14	1.426 (3)
C1—H1B	0.9300	C14—C15	1.414 (3)
N2—C9	1.342 (3)	C14—C19	1.427 (3)
N2—H2A	0.8600	C15—C16	1.356 (4)
N2—H2B	0.8600	C15—H15A	0.9300
C2—C3	1.369 (4)	C16—C17	1.403 (4)
C2—H2C	0.9300	C16—H16A	0.9300
N3—C12	1.145 (3)	C17—C18	1.347 (4)
C3—C4	1.350 (4)	C17—H17A	0.9300
C4—C5	1.381 (4)	C18—C19	1.414 (4)
C4—H4A	0.9300	C18—H18A	0.9300
C5—C6	1.393 (4)	C19—C20	1.401 (4)
C5—H5A	0.9300	C20—C21	1.347 (4)
C6—C7	1.486 (3)	C20—H20A	0.9300
C7—C8	1.391 (3)	C21—C22	1.406 (4)
C7—C11	1.396 (3)	C21—H21A	0.9300
C8—C9	1.413 (3)	C22—H22A	0.9300
C8—C12	1.438 (3)		
C10—N1—C9	118.1 (2)	C10—C11—C7	120.1 (2)
C2—C1—C6	121.1 (3)	C10—C11—H11A	120.0
C2—C1—H1B	119.4	C7—C11—H11A	120.0
C6—C1—H1B	119.4	N3—C12—C8	174.6 (3)
C9—N2—H2A	120.0	C22—C13—C14	119.6 (2)
C9—N2—H2B	120.0	C22—C13—C10	118.2 (2)
H2A—N2—H2B	120.0	C14—C13—C10	122.1 (2)
C3—C2—C1	118.0 (3)	C15—C14—C13	123.9 (2)
C3—C2—H2C	121.0	C15—C14—C19	117.9 (2)
C1—C2—H2C	121.0	C13—C14—C19	118.1 (2)
C4—C3—F	119.2 (3)	C16—C15—C14	121.8 (2)
C4—C3—C2	123.2 (3)	C16—C15—H15A	119.1
F—C3—C2	117.6 (3)	C14—C15—H15A	119.1
C3—C4—C5	118.8 (3)	C15—C16—C17	119.9 (3)
C3—C4—H4A	120.6	C15—C16—H16A	120.0
C5—C4—H4A	120.6	C17—C16—H16A	120.0
C4—C5—C6	120.3 (3)	C18—C17—C16	120.3 (3)
C4—C5—H5A	119.9	C18—C17—H17A	119.8
C6—C5—H5A	119.9	C16—C17—H17A	119.8
C1—C6—C5	118.6 (2)	C17—C18—C19	121.7 (3)
C1—C6—C7	119.4 (2)	C17—C18—H18A	119.1
C5—C6—C7	122.0 (2)	C19—C18—H18A	119.1

supplementary materials

C8—C7—C11	117.0 (2)	C20—C19—C18	122.4 (2)
C8—C7—C6	122.8 (2)	C20—C19—C14	119.4 (2)
C11—C7—C6	120.1 (2)	C18—C19—C14	118.2 (2)
C7—C8—C9	119.8 (2)	C21—C20—C19	121.6 (2)
C7—C8—C12	123.3 (2)	C21—C20—H20A	119.2
C9—C8—C12	116.9 (2)	C19—C20—H20A	119.2
N2—C9—N1	116.4 (2)	C20—C21—C22	119.6 (2)
N2—C9—C8	121.8 (2)	C20—C21—H21A	120.2
N1—C9—C8	121.9 (2)	C22—C21—H21A	120.2
N1—C10—C11	123.1 (2)	C13—C22—C21	121.7 (3)
N1—C10—C13	115.9 (2)	C13—C22—H22A	119.2
C11—C10—C13	120.9 (2)	C21—C22—H22A	119.2
C6—C1—C2—C3	0.7 (5)	C8—C7—C11—C10	1.3 (4)
C1—C2—C3—C4	0.6 (5)	C6—C7—C11—C10	-176.3 (2)
C1—C2—C3—F	178.2 (3)	N1—C10—C13—C22	131.9 (3)
F—C3—C4—C5	-179.1 (3)	C11—C10—C13—C22	-43.9 (3)
C2—C3—C4—C5	-1.5 (5)	N1—C10—C13—C14	-44.0 (3)
C3—C4—C5—C6	1.1 (5)	C11—C10—C13—C14	140.2 (2)
C2—C1—C6—C5	-1.0 (4)	C22—C13—C14—C15	173.1 (2)
C2—C1—C6—C7	179.5 (3)	C10—C13—C14—C15	-11.0 (4)
C4—C5—C6—C1	0.1 (4)	C22—C13—C14—C19	-4.6 (3)
C4—C5—C6—C7	179.6 (3)	C10—C13—C14—C19	171.2 (2)
C1—C6—C7—C8	-137.1 (3)	C13—C14—C15—C16	-179.9 (2)
C5—C6—C7—C8	43.4 (4)	C19—C14—C15—C16	-2.1 (4)
C1—C6—C7—C11	40.4 (4)	C14—C15—C16—C17	-0.8 (4)
C5—C6—C7—C11	-139.2 (3)	C15—C16—C17—C18	2.1 (5)
C11—C7—C8—C9	-0.7 (4)	C16—C17—C18—C19	-0.3 (5)
C6—C7—C8—C9	176.9 (2)	C17—C18—C19—C20	176.2 (3)
C11—C7—C8—C12	-178.5 (2)	C17—C18—C19—C14	-2.6 (4)
C6—C7—C8—C12	-1.0 (4)	C15—C14—C19—C20	-175.1 (2)
C10—N1—C9—N2	179.3 (2)	C13—C14—C19—C20	2.8 (3)
C10—N1—C9—C8	0.3 (4)	C15—C14—C19—C18	3.8 (4)
C7—C8—C9—N2	-179.1 (2)	C13—C14—C19—C18	-178.3 (2)
C12—C8—C9—N2	-1.1 (4)	C18—C19—C20—C21	-178.0 (3)
C7—C8—C9—N1	-0.2 (4)	C14—C19—C20—C21	0.8 (4)
C12—C8—C9—N1	177.9 (2)	C19—C20—C21—C22	-2.7 (4)
C9—N1—C10—C11	0.5 (4)	C14—C13—C22—C21	2.9 (4)
C9—N1—C10—C13	-175.3 (2)	C10—C13—C22—C21	-173.1 (2)
N1—C10—C11—C7	-1.3 (4)	C20—C21—C22—C13	0.8 (4)
C13—C10—C11—C7	174.2 (2)		

Hydrogen-bond geometry (\AA , $^\circ$)

$D-H\cdots A$	$D-H$	$H\cdots A$	$D\cdots A$	$D-H\cdots A$
C15—H15A \cdots N1	0.93	2.50	2.997 (3)	114
N2—H2A \cdots N1 ⁱ	0.86	2.33	3.149 (3)	158
C20—H20A \cdots F ⁱⁱ	0.93	2.50	3.284 (4)	142

Symmetry codes: (i) $-x+2, -y+1, -z$; (ii) $x+1, -y+1/2, z+1/2$.

Fig. 1

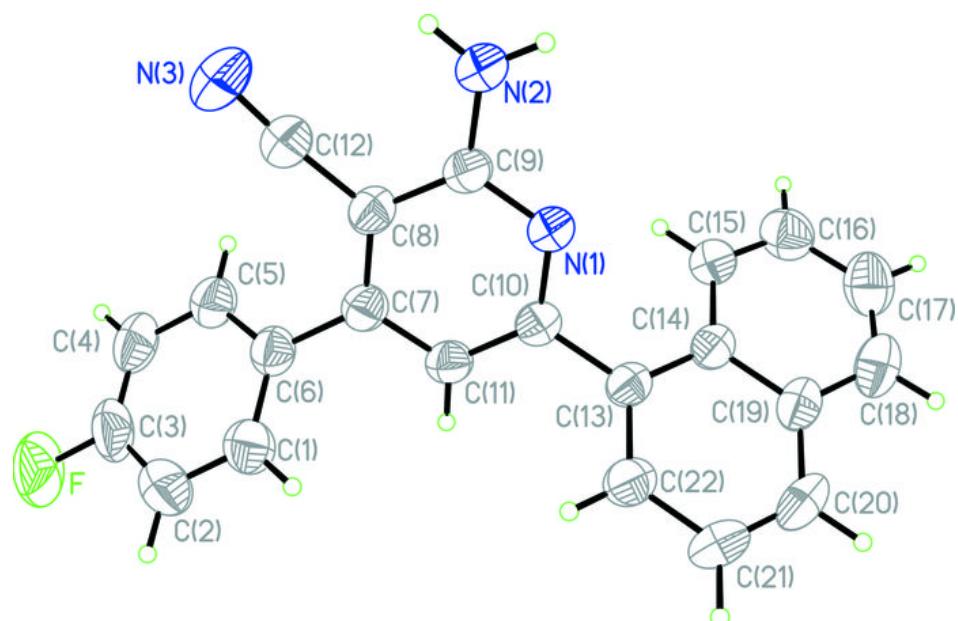


Fig. 2

