

# Efficacy and Patient Tolerability of Omidenepag Isopropyl in the Treatment of Glaucoma and Ocular Hypertension

Masato Matsuo<sup>1</sup>, Yotaro Matsuoka<sup>2</sup>, Masaki Tanito<sup>1</sup>

<sup>1</sup>Department of Ophthalmology, Shimane University Faculty of Medicine, Izumo City, Shimane, 693-8501, Japan; <sup>2</sup>Division of Ophthalmology, Matsue Red Cross Hospital, Matsue, Shimane, 690-8506, Japan

Correspondence: Masato Matsuo, Department of Ophthalmology, Shimane University Faculty of Medicine, Enya 89-1, Izumo, Shimane, 693-8501, Japan, Tel +81-853-20-2284, Fax +81-853-20-2278, Email mmpeaceful@yahoo.ne.jp

**Abstract:** Current therapeutic approaches for glaucoma aim to reduce intraocular pressure (IOP), which is the only available and reliable strategy proven to control the risk of disease development and progression. Omidenepag isopropyl (OMDI) is a novel topical ocular hypotensive agent that was launched onto the market for the treatment of glaucoma and ocular hypertension (OHT). After topical instillation and during corneal penetration, OMDI is converted into the active metabolite omidenepag (OMD), which behaves as a non-prostaglandin, selective E-prostanoid subtype 2 (EP2) receptor agonist. The topical administration of 0.002% OMDI once-daily (QD) possesses a 20–35% IOP-lowering effect, comparable to that of prostaglandin analogs targeting F-prostanoid (FP) receptor QD, which are the current first-line for pharmaceutical reduction of IOP. However, the mechanism of action and adverse events (AEs) of OMDI are different from those of FP receptor agonists. OMDI reduces IOP by enhancing both conventional trabecular and uveoscleral outflow facilities without complications of prostaglandin-associated periorbitopathy (PAP) seen with FP receptor agonists. Moreover, OMDI was also effective and well-tolerated in non-/poor responders to latanoprost and showed a stable IOP-lowering effect for one year, and its concomitant use with timolol enhanced the IOP-lowering effect. OMDI demonstrated acceptable safety and tolerability with good adherence and can be used in almost every patient. However, OMDI has some AEs such as conjunctival hyperemia, corneal thickening, macular edema/cystoid macular edema and ocular inflammation. Moreover, OMDI is contraindicated in patients who are allergic to the product, in aphakic or pseudophakic eyes, and in combination with tafluprost eye drops. If used appropriately in the right patients, OMDI could be an effective treatment option for glaucoma and OHT as a first-line alternative to FP agonists. Here, we summarize the results of clinical studies of OMDI and discuss its efficacy and patient tolerability in glaucoma and OHT in this review.

**Keywords:** omidenepag, EP2 receptor, intraocular pressure, adverse event, prostaglandin, glaucoma

## Introduction

The number of blind and visually impaired people due to glaucoma increased markedly, and this upward trend will continue with the growth and aging of populations, making glaucoma an important target for prevention and treatment.<sup>1–4</sup> Current therapeutic approaches for glaucoma aim to reduce intraocular pressure (IOP), which is the only available and reliable strategy shown to control the risk of disease development and progression.<sup>5–8</sup> In 1977, the low-concentration topical administration of prostaglandin F<sub>2α</sub> (PGF<sub>2α</sub>) or prostaglandin E<sub>2</sub> (PGE<sub>2</sub>) was demonstrated to decrease intraocular pressure (IOP) by stimulating the respective F-prostanoid (FP) receptor or E-prostanoid (EP) receptor.<sup>9</sup> Then, prostaglandin analogs targeting FP receptors to lower IOP were developed to have a better penetration into the anterior chamber and fewer side effects.<sup>10,11</sup> Today, four prostaglandin derivatives (latanoprost, tafluprost, travoprost, and bimatoprost) targeting the FP receptor, or FP receptor agonists, have been released. They are most commonly used as once-daily eye drops across the world, being the first-line pharmaceutical treatment for glaucoma because of their greatest IOP-lowering effect of all glaucoma eye drops, efficacy in all forms of glaucoma, suppression of diurnal IOP

variation, additive effects in combination with other types of glaucoma eye drops, few systemic side effects, and good patient adherence.<sup>12,13</sup> FP receptor agonists decrease IOP by primarily increasing aqueous humor drainage via the uveoscleral outflow pathway by stimulating Gq-protein-mediated increases in intracellular calcium concentrations and various signaling cascades in the ciliary body and trabecular meshwork.<sup>12–14</sup>

However, despite the high efficacy and tolerability of FP receptor agonists administered once a day, there are some unmet clinical needs. First, in addition to common ocular side effects such as conjunctival hyperemia and eye irritation, the long-term or unilateral usage of FP receptor agonists frequently induces distinctive local side effects, named prostaglandin-associated periorbitopathy (PAP), including hyperpigmentation in the iris and around the eyelids, eyelash growth, blepharochalasis involution, periorbital fat loss, enophthalmos, deepening of the upper eyelid sulcus (DUES), and hardening of eyelids and ptosis.<sup>13,15</sup> Periorbital tissue changes could hinder the long-term management of glaucoma by making IOP measurements difficult, increasing ophthalmic surgical failures of trabeculectomy, and reducing treatment adherence due to cosmetic problems.<sup>15–17</sup> Therefore, PAP is a well-known clinical and cosmetic concern in patients receiving FP receptor agonists.<sup>15,16</sup> Second, a small number of patients do not respond to FP receptor agonists and have less than 10% or 15% IOP reduction (non-/poor responders to FP agonists). It was found that 28% of Japanese patients in a retrospective study and 52% of predominantly Caucasian patients in a prospective randomized study were non-/poor responders to latanoprost.<sup>18,19</sup> Therefore, an effective, well-tolerated, alternative monotherapy with a novel mechanism of action would be clinically beneficial to treat glaucoma patients with PAP or non-/poor responders to latanoprost or other FP agonists. In other words, the current developmental goal for glaucoma ophthalmic solutions would be to provide a therapy with IOP-lowering effects equivalent to those of latanoprost throughout the day with a once-daily drop, the possibility of use in combination with other eye drops, presenting fewer side effects, and with less inter-individual variability in efficacy.

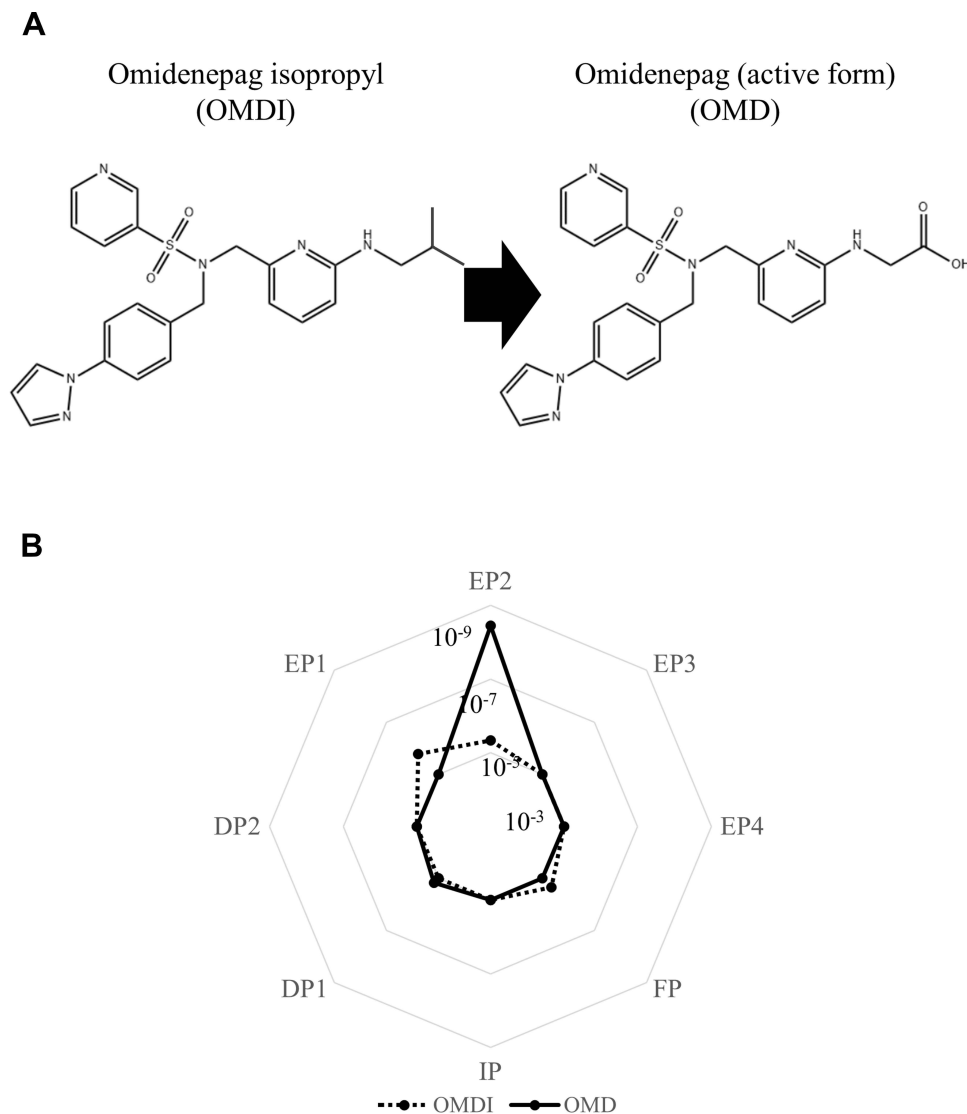
Besides the FP receptor for PGF<sub>2</sub> $\alpha$ , the EP subtype 1–4 receptors for PGE<sub>2</sub> also play an important role in IOP regulation.<sup>20</sup> In recent years, several attempts have been made to find compounds affecting IOP by modulating prostaglandin signaling on multiple receptor subtypes. Of particular interest in the present context is the E-prostanoid subtype 2 (EP2) receptor.<sup>20–22</sup> Evolving research suggests that selective EP2 receptor agonists, including DE-117 (omidinapag isopropyl, OMDI), PF-04217329 (taprenepag isopropyl), AGN-210961 (aganepag isopropyl) and JV-GL1 (PGN-9856 isopropyl), have an IOP-lowering potential in glaucoma and OHT, and some of these compounds are in clinical development.<sup>23–33</sup> Against this backdrop, several Phase I to III clinical trials of OMDI were conducted.<sup>25–27,34,35</sup> The phase I trial aimed to investigate the pharmacokinetic properties, safety, and IOP-lowering effect in a small number of healthy people.<sup>34</sup> The next Phase II trials were designed to assess the efficacy and safety in a larger group of patients.<sup>25,35</sup> Then, the Phase III clinical trials compared the efficacy and safety against the current standard treatment in a large number of patients, at least several hundred.<sup>26,27</sup> Finally, a 0.002% OMDI ophthalmic solution (Eybelis, Santen Pharmaceutical Co., Ltd., Osaka, Japan), the world's first commercially available EP2 receptor agonist, was approved in Japan in September 2018 as a new class of ocular hypotensive agents for the treatment of glaucoma and OHT.<sup>23–28,33</sup> Furthermore, OMDI was the first once-daily ophthalmic drug with a novel mechanism of action to demonstrate non-inferiority in lowering IOP with minimal side effects in a direct comparison study with latanoprost.<sup>26</sup> OMDI is currently also approved in Singapore, South Korea, Taiwan, and Thailand. Moreover, India, Malaysia, the Philippines, and the United States have pending reviews by their local regulatory agencies. Various clinical trials are revealing OMDI's potential as an alternative first-line drug for glaucoma and OHT treatment, as well as precautions for its use. Here, we summarize the results of relevant studies<sup>13,15–20,23–29,34,36–45</sup> and discuss its efficacy<sup>23–28,35,44–49</sup> and patient tolerability<sup>13,15,25–28,34–36,50–65</sup> in glaucoma and OHT in this review.

## Pharmacological Profile of OMDI

OMDI, a selective EP2 receptor agonist with a non-prostaglandin structure, was co-developed by Ube Industries Ltd. (Tokyo, Japan) and Santen Pharmaceutical Co. Ltd. (Osaka, Japan). FP receptor agonists, the current first-line and most prescribed glaucoma eye drops, have inherent problems with non-/poor responders and ocular local side effects.<sup>15–19</sup> Moreover, beta-blockers, another first-line ocular hypotensive agents, are not effective as FP receptor agonists in lowering IOP, and have a problem with systemic side effects.<sup>36,37</sup> Therefore, there was a requirement for the development

of a new first-line ophthalmic agent for glaucoma and OHT with a novel mechanism of action and efficacy and safety comparable to or higher than those of a FP receptor agonist.

The pharmacodynamic properties of OMDI have been clarified by various recent studies.<sup>13,15,20,23–29,38–45</sup> OMDI is an isopropyl ester prodrug that undergoes hydrolysis to its active metabolite (omidenepag, OMD) during corneal penetration (Figure 1A), which behaves a non-prostaglandin, selective EP2 receptor agonist.<sup>23–28,38</sup> In vitro studies using human recombinant prostanoid receptors, OMD was shown to selectively bind to the EP2 receptor ( $K_i = 3.6$  nM) and possess high agonistic activity ( $EC_{50} = 8.3$  nM) toward the EP2 receptor, with no detectable effects on other prostanoid receptors (Figure 1B). OMDI showed weak or no binding affinity to the prostanoid receptors tested, including EP1, EP2, and FP (Figure 1B).<sup>23</sup> Following the topical administration of OMDI in rabbits, OMDI was below the limit of detection and OMD was the only detectable form in the aqueous humor.<sup>23</sup> Therefore, the unique clinical side effects due to nonspecific binding to the FP receptor, or PAP, do not occur.<sup>15</sup> Recent in vivo and in vitro studies showed that OMD has no or little effect on adipocyte differentiation, adipogenesis, and eye lash growth, which are PAP-related



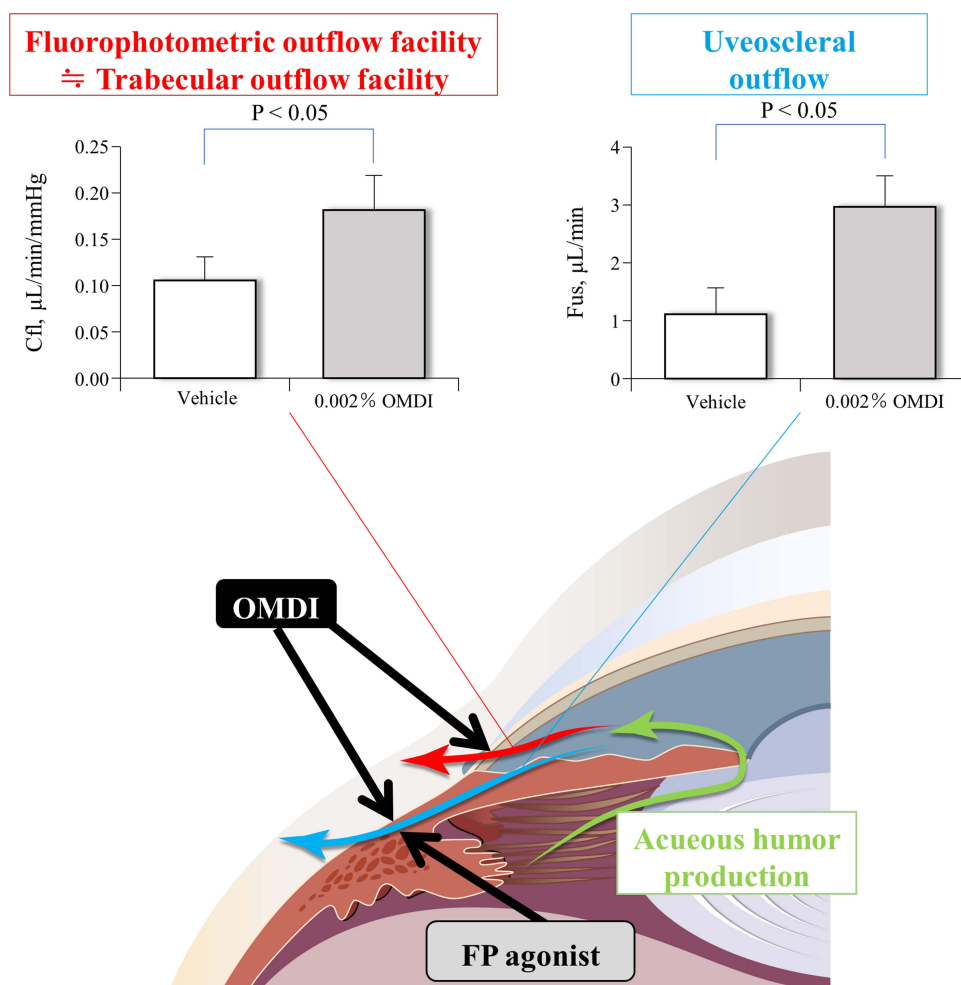
**Figure 1** Chemical structures of OMDI and its active form, OMD (A), and their binding affinity to prostanoid receptors evaluated with  $K_i$  value (mol/L) (B). OMDI shows no or little binding to the prostanoid receptors, while OMD has strong selective binding affinity to the EP2 receptor.

**Note:** Data from Kirihara et al.<sup>23</sup>

**Abbreviations:** OMDI, omidenepag isopropyl; OMD, omidenepag.

organizational changes seen with FP agonist use.<sup>39–41</sup> Moreover, OMD has different effects on 3D human orbital fibroblast organoids as compared to bimatoprost acid, which indicate that it may not induce deepening of upper eyelid sulcus (DUES).<sup>42</sup> Antiglaucoma drugs such as OMD and bimatoprost acid modulate the structures and physical properties of Grave's orbitopathy-related human orbital fibroblast 3D organoids in different manners by modifying the gene expressions of ECM, ECM regulatory factors, and inflammatory cytokines.<sup>43</sup>

The EP2 receptor is a Gs-coupled transmembrane receptor found in the ciliary body and trabecular meshwork. EP2 receptor agonists decrease IOP by increasing both trabecular and uveoscleral outflow by stimulating a Gs-protein-mediated elevations in intracellular adenosine 3',5-cyclic monophosphate (cAMP) levels and various signaling cascades in the ciliary body and trabecular meshwork.<sup>13,20,29</sup> In monkeys with laser-induced OHT, treatment with 0.002% OMDI ophthalmic solution for 1 week resulted in a significant 71% increase in the aqueous outflow facility (thought to be the conventional, pressure-dependent trabecular outflow facility) and a significant 176% increase in the uveoscleral outflow compared with the control vehicle treatment ( $p < 0.05$ , respectively) (Figure 2).<sup>24</sup> No significant difference was seen in aqueous humor production for 0.002% OMDI ophthalmic solution compared with vehicle.<sup>24</sup> Therefore, OMDI is thought to lower IOP by promoting aqueous humor outflow via a dual mechanism of action, increasing both the trabecular



**Figure 2** Mechanism of action for IOP reduction with topical administration of OMDI in OHT monkey eyes. OMDI reduces IOP by enhancing both conventional trabecular and uveoscleral outflow facilities, while FP agonists do it mainly via uveoscleral outflow.

**Notes:** Aqueous humor outflow parameters following treatment with vehicle or 0.002% OMDI are represented as mean $\pm$ SEM. Statistical significance was analyzed with a paired t-test. Data from Fuwa et al.<sup>24</sup>

**Abbreviations:** C<sub>fl</sub>, fluorophotometric outflow facility; F<sub>us</sub>, uveoscleral outflow; OMDI, omidenepag isopropyl; FP agonist, F-prostanoid receptor agonist.

outflow facility and uveoscleral outflow as a result of EP2 receptor stimulation.<sup>23,24</sup> Another recent study with human trabecular meshwork (TM) cells, monkey Schlemm's canal endothelial (SCE) cells, and porcine ciliary muscle showed that the IOP-lowering effect of OMD through the conventional outflow pathway is exerted by increasing outflow facilities with the modulation of TM cell fibrosis and SCE cell permeability.<sup>44</sup>

In monkeys without OHT, a single topical administration of 0.0006% OMDI ophthalmic solution in combination with 0.5% timolol maleate (timolol), 1% brinzolamide, 0.01% netarsudil mesylate, 0.4% ripasudil hydrochloride hydrate, or 0.15% brimonidine tartrate resulted in an IOP reduction that was significantly lower than that seen with monotherapy with any of these drugs alone ( $p < 0.05$ , respectively).<sup>45</sup> Namely, OMDI has additive IOP-lowering effects when administered in combination with other classes of antiglaucoma eye drops such as  $\beta$ -adrenergic antagonists, carbonic anhydrase inhibitors, Rho-associated coiled-coil containing protein kinases inhibitors, and  $\alpha 2$ -adrenergic agonists, because of its unique mechanisms of action.<sup>45</sup>

The pharmacokinetic properties of OMDI ophthalmic solution 0.002% in humans have been investigated in a phase I trial of seven Japanese and seven Caucasian healthy volunteers.<sup>34</sup> Following treatment with 0.002% OMDI ophthalmic solution QD, OMD was rapidly absorbed in both subjects and the maximum plasma concentration ( $C_{max}$ ) of the active metabolite (OMD) was achieved (almost 30–40 pg/mL) after 10–15 min. The half-life ( $t_{1/2}$ ) of OMD was approximately 30 min, and the plasma concentrations were below the limit of quantification 4 hours after eye drop administration.<sup>34</sup> Moreover, OMD pharmacokinetic parameters were similar between Japanese and Caucasian subjects, and there was no accumulation of OMD after 7 days of dosing.<sup>34</sup>

## Efficacy – IOP-Lowering Effect of OMDI

Table 1 summarizes the twelve clinical trials registered in the US National Library of Medicine for DE-117, the OMDI ophthalmic solution (searched on 2022/1/11). These are being or were conducted in the US, Japan, India, South Korea, Singapore, and Taiwan. Currently, nine have been completed and the results of seven have been described in clinical articles. Seven are phase III clinical trials for OMDI ophthalmic solution 0.002%. Two of these, SPECTRUM 3 (NCT03691649) and SPECTRUM 4 (NCT03691662), are in patients with glaucoma or OHT; the other two, RENGE (NCT02822729) and PEONY (NCT02981446), are in patients with open-angle glaucoma (OAG) or OHT; the other one, AYAME (NCT02623738), is in patients with POAG or OHT; and the others, FUJI (NCT02822742) and SPECTRUM 5 (NCT03697811), are in patients with POAG or OHT who are non-/poor responders to latanoprost.

Table 2 summarizes the IOP-lowering effect of OMDI ophthalmic solutions in published articles related to clinical trials. For further investigation in a phase III clinical trial program, 3 randomized, masked, controlled, parallel group, multicenter, dose-finding studies (NCT01868126, NCT02179008, and NCT02623738) were consecutively conducted to determine the optimal dose concentrations of OMDI ophthalmic solution in patients with POAG or OHT. As a result, the 0.002% OMDI ophthalmic solution QD was found to have the optimal dose, which demonstrated stable IOP-lowering effects with good tolerance.<sup>25</sup> Moreover, a recent phase II clinical trial (SPECTRUM 6) supported that the 0.002% OMDI ophthalmic solution was more favorable when administered QD than it was when administered twice-daily (BID), considering the benefit-risk profile because of the 3 times higher incidence of local tolerability issues (BID: 41.7%; QD: 14.0%) without significant difference in IOP reduction in the BID arm.<sup>35</sup>

A series of three clinical trials conducted in Japan have confirmed the IOP-lowering effects of OMDI: (1) the non-inferiority of OMDI over latanoprost (AYAME), (2) the long-term efficacy of OMDI and its additive effect in combination with timolol (RENGE), and (3) the efficacy of OMDI in non-/poor responders to latanoprost (FUJI). A Phase III, randomized, single-masked, active-controlled, parallel group, multicenter, non-inferiority study (AYAME) was conducted to compare the efficacies of treatment with 0.002% OMDI and 0.005% latanoprost ophthalmic solutions QD in patients with POAG and OHT for 4 weeks after a washout period ( $n = 190$ ).<sup>26</sup> At week 4, the mean diurnal IOP significantly decreased by 5.93 mmHg from baseline of 23.78 mmHg (24.9% reduction) in the OMDI group, and by 6.56 mmHg from baseline of 23.40 mmHg (28.0% reduction) in the latanoprost group (Table 2). However, the difference in mean diurnal IOP reduction from baseline to week 4 between two arms was 0.63 (95% CI: 0.01–1.26) mmHg in favor of latanoprost. The IOP reduction achieved with OMDI was found to be non-inferior to that achieved with latanoprost because the difference is within the standard level for non-inferiority (1.5 mmHg). Therefore, OMDI was shown to be the

**Table 1** Summary of Clinical Trials Performed with Omidenepag Isopropyl (DE-117) Ophthalmic Solution

NCT Number (Trial Feature)	Study Design (Phase, Allocation, Masking, Intervention Model)	Enrollment, n	Status	Condition	Arms	Treatment Duration	Primary Outcome Measure	Reference
NCT01654484	I/II, randomized, single-masked, parallel group	60	Completed	POAG or OHT	DE-117 (0.003%, 0.01% and 0.03%) QD DE-117 (0.003%, 0.01% and 0.03%) QD and tafluprost 0.0015% QD Tafluprost 0.0015% QD Placebo QD	28 days	IOP change from baseline at each time point (08:00, 10:00, 12:00, and 16:00)	NA
NCT01868126	II, randomized, single-masked, parallel group	91	Completed	POAG or OHT	DE-117 (0.0003%, 0.001%, 0.002%, or 0.003%) QD  Latanoprost 0.005% QD  Placebo QD	4 weeks	IOP at each time point (08:00, 10:00, 12:00, and 16:00) and mean diurnal IOP Number of subjects with adverse events	Aihara et al. J Glaucoma, 2019
NCT02179008 (SEE-I)	II, randomized, double-masked, parallel group	184	Completed	POAG or OHT	DE-117 (0.0012%, 0.0016%, 0.002%, 0.0025%, or 0.003%) QD Latanoprost 0.005% QD	3 months	IOP at each time point (08:00, 10:00, 12:00, 16:00 and 18:00) and mean diurnal IOP Number of subjects with adverse events	Aihara et al. J Glaucoma, 2019
NCT02650063	I, open-label, single group	14	Completed	Healthy Male Adults	DE-117 0.0025% QD	1 week	Area under concentration-time curve (AUC) Maximum plasma concentration (C <sub>max</sub> ) Time to maximum plasma concentration (T <sub>max</sub> ) Elimination half-life (T <sub>1/2</sub> )	Aihara et al, J Ocul Pharmacol, 2019
NCT02623738 (AYAME)	II/III, randomized, single-/double-masked, parallel group	253	Completed	POAG or OHT	DE-117 (0.002%, or 0.0025%) QD  Latanoprost 0.005% QD  Placebo QD	4 weeks	IOP at each time point (09:00, 13:00, and 17:00) and mean diurnal IOP change from baseline Number of subjects with adverse events	Aihara et al. J Glaucoma, 2019, Aihara et al. Am J Ophthalmol, 2020



NCT02822729 (RENGE)	III, randomized, open-label, parallel group	125	Completed	OAG or OHT	DE-117 0.002% QD	52 weeks	IOP at each time point (09:00, 13:00, and 17:00) and mean diurnal IOP	Aihara et al, Jpn J Ophthalmol, 2021
NCT02822742 (FUJI)	III, open-label, single group	26	Completed	POAG or OHT who are non-/poor responders to Latanoprost	DE-117 0.002% QD and Timolol 0.5% BID Switching to DE-117 0.002% QD from Latanoprost 0.005% QD	4 weeks	Number of subjects with adverse events Mean diurnal IOP change from baseline	Aihara et al, Jpn J Ophthalmol, 2020
NCT02981446 (PEONY)	III, randomized, single-masked, parallel group	370	Completed	OAG or OHT	DE-117 0.002% QD	3 months	Mean diurnal IOP	NA
NCT03691649 (SPECTRUM 3)	III, randomized, double-masked, parallel group	427	Unknown status	Glaucoma or OHT	Latanoprost 0.005% QD Vehicle QD and DE-117 QD for 3 months, followed by DE-117 QD for 9 additional months Timolol Maleate 0.5% BID for 3 months, followed by DE-117 QD for 9 additional months	12 months	IOP change from baseline	NA
NCT03691662 (SPECTRUM 4)	III, randomized, double-masked, parallel group	409	Unknown status	Glaucoma or OHT	Vehicle QD and DE-117 QD	3 months	IOP change from baseline	NA
NCT03697811 (SPECTRUM 5)	III, open-label, single group	150	Unknown status	POAG or OHT who are non-/poor responders to Latanoprost	Timolol Maleate 0.5% BID Switching to DE-117 0.002% QD from Latanoprost 0.005% QD	3 months	IOP change from baseline in Latanoprost low/non-responder subjects	NA
NCT03858894 (SPECTRUM 6)	II, randomized, double-masked, parallel group	98	Completed	POAG or OHT	Vehicle QD and DE-117 0.002% QD DE-117 0.002% BID	6 weeks	IOP at each time point (08:00, 12:00, and 16:00) Number of subjects with adverse events	Olander et al. J Glaucoma, 2021

**Notes:** Data were obtained from the *ClinicalTrials.gov* website (<https://clinicaltrials.gov/ct2/results?cond=&term=DE-117&cntry=&state=&city=&dist=&Search=Search>) on January 11, 2022.

**Abbreviations:** NCT, national clinical trial; n, number of subjects; POAG, primary open-angle glaucoma; OHT, ocular hypertension; IOP, intraocular pressure; QD, quaque die; NA, not applicable; OAG, open-angle glaucoma, BID, bis die sumendum.

**Table 2** Summary of Efficacy and Patient Tolerability of Omidenedap Isopropyl (DE-117) Ophthalmic Solution in Clinical Trials

Reference	NCT Number (Trial Feature)	Enrollment Number	Condition	Primary Outcome Measure	Arms (n)	Baseline Mean Diurnal IOP (mmHg)	Results				
							Efficacy		Patient Tolerability		
							Mean Diurnal IOP Change from Baseline (mmHg)	Mean Diurnal IOP Reduction Rate from Baseline (%)	AEs, n (%)	Serious AEs, n (%)	AEs Leading to Discontinuation, n (%)
Aihara et al. J Glaucoma, 2019	NCT01868126	91	POAG or OHT	IOP at each time point and mean diurnal IOP at week 4 Number of subjects with adverse events	DE-117 0.0003% QD (17)	24.6	-3.12	12.7	0	0	0
					DE-117 0.001% QD (15)	24.8	-4.59	18.5	1 (6.7)	0	0
					DE-117 0.002% QD (14)	24.8	-7.39	29.8	9 (64.3)	0	0
					DE-117 0.003% QD (15)	25.8	-5.99	23.2	7 (46.7)	0	0
					Latanoprost 0.005% QD (15)	25.5	-7.77	30.5	1 (6.7)	0	0
Aihara et al. J Glaucoma, 2019	NCT02179008 (SEE-I)	184	POAG or OHT	IOP at each time point and mean diurnal IOP at month 3 Number of subjects with adverse events	DE-117 0.0012% QD (32)	25.1	-4.17	16.6	19 (59.4)	0	2 (6.3)
					DE-117 0.0016% QD (29)	25.5	-4.69	18.4	15 (51.7)	0	0
					DE-117 0.002% QD (29)	25.4	-5.52	21.7	15 (51.7)	1 (3.4)	1 (3.4)
					DE-117 0.0025% QD (30)	25.6	-5.98	23.4	19 (63.3)	1 (3.3)	1 (3.3)
					DE-117 0.003% QD (31)	24.8	-5.28	21.3	19 (61.3)	1 (3.2)	2 (6.5)
					Latanoprost 0.005% QD (32)	25.1	-6.55	26.1	17 (53.1)	0	0
					Placebo (15)	25.5	-1.94	7.6	2 (13.3)	0	0
Aihara et al. J Glaucoma, 2019	NCT02623738 (AYAME)	63	POAG or OHT	IOP at each time point and mean diurnal IOP change from baseline at week 4 Number of subjects with adverse events	DE-117 0.002% QD (22)	23.8	-5.11	21.5	9 (40.9)	0	0
					DE-117 0.0025% QD (22)	23.7	-4.83	20.4	10 (45.5)	0	1 (4.5)
					Placebo (19)	23.4	-2.18	9.3	2 (10.5)	0	0



Aihara et al. Am J Ophthalmol, 2020	NCT02623738 (AYAME)	190	POAG or OHT	IOP at each time point and mean diurnal IOP change from baseline at week 4	DE-117 0.002% QD (94)	23.78	-5.93	24.9	46 (48.9)	0	2 (2.1)
				Number of subjects with adverse events	Latanoprost 0.005% QD (95)	23.4	-6.56	28.0	26 (27.1)	0	2 (2.1)
Aihara et al, Jpn J Ophthalmol, 2020	NCT02822742 (FUJI)	26	POAG or OHT who were non-/ poor responders to Latanoprost	Mean diurnal IOP change from baseline at week 4	Switching to DE-117 0.002% QD from Latanoprost 0.005% QD (26)	25.0, end of washout; 23.1, end of latanoprost run in	-4.87 from end of washout; -2.99 from end of latanoprost run in	19.5 from end of washout; 12.9 from end of latanoprost run in	5 (19.2)	0	0
Aihara et al, Jpn J Ophthalmol, 2021	NCT02822729 (RENGE)	125	OAG or OHT	IOP at each time point and mean diurnal IOP at week 52	Cohort 1: baseline diurnal IOP of $\geq 16$ - $< 22$ mmHg and treated with DE-117 0.002% QD (48)	18.71	-3.7	19.8	38 (79.2)	3 (6.3)	8 (16.7)
				Number of subjects with adverse events	Cohort 2: baseline diurnal IOP of $\geq 22$ - $\leq 34$ mmHg and treated with DE-117 0.002% QD (37)	24.06	-5.6	23.3	27 (73.0)	1 (2.7)	1 (2.7)
					Cohort 3: baseline diurnal IOP of $\geq 22$ - $\leq 34$ mmHg and treated with DE-117 0.002% QD and Timolol 0.5% BID (40)	23.14	-8.4	36.3	37 (92.5)	1 (2.5)	7 (17.5)
Olander et al. J Glaucoma, 2021	NCT03858894 (SPECTRUM 6)	98	POAG or OHT	IOP at each time point at week 6	Vehicle QD and DE-117 0.002% QD (50)	24.55	-6.18	25.2	7 (14.0)	1 (2.0)	0
				Number of subjects with adverse events	DE-117 0.002% BID (48)	25.39	-7.62	17.8	20 (41.7)	0	4 (8.3)

**Abbreviations:** NCT, national clinical trial; IOP, intraocular pressure; AE, adverse event; n, number of subjects; POAG, primary open-angle glaucoma; OHT, ocular hypertension; QD, quaque die; OAG, open-angle glaucoma, BID, bis die sumendum.

first ophthalmic solution in more than 20 years to show non-inferiority to latanoprost.<sup>46</sup> The phase III, 3-month PEONY study, with a larger sample size ( $n = 370$ ) and a study design similar to that of the AYAME study, has been completed in India, South Korea, Singapore, and Taiwan, and its results await publication. The phase III RENGE study ( $n = 125$ ) also investigated the long-term, 12-month efficacy of 0.002% OMDI ophthalmic solution QD in patients with OAG and OHT divided into three cohorts.<sup>28</sup> OMDI significantly decreased IOP over 52 weeks in a high-baseline IOP group with a baseline diurnal IOP of 22–34 mmHg, a low-baseline IOP group with a baseline diurnal IOP of 16–22 mmHg, and a concomitant-use-of-timolol group with a baseline diurnal IOP of 22 to 34 mmHg ( $p < 0.001\%$ , respectively). Moreover, the combination therapy of OMDI and timolol resulted in additional IOP-lowering effects, confirming recent basic research results.<sup>45</sup> In the phase III FUJI study ( $n = 24$ ), 0.002% OMDI QD was also effective for patients who had failed to respond to latanoprost. The 4-week treatment with OMDI was well-tolerated and significantly reduced the mean diurnal IOP from baseline in patients who exhibited under 15% IOP reduction following 8-week treatment with latanoprost (non-/poor responders to latanoprost).<sup>27</sup> Therefore, OMDI showed good IOP results both in patients with newly introduced or switching treatment. Further phase III studies of non-/poor responders to latanoprost (SPECTRUM 5) with a larger sample size over longer time periods are ongoing in the US.

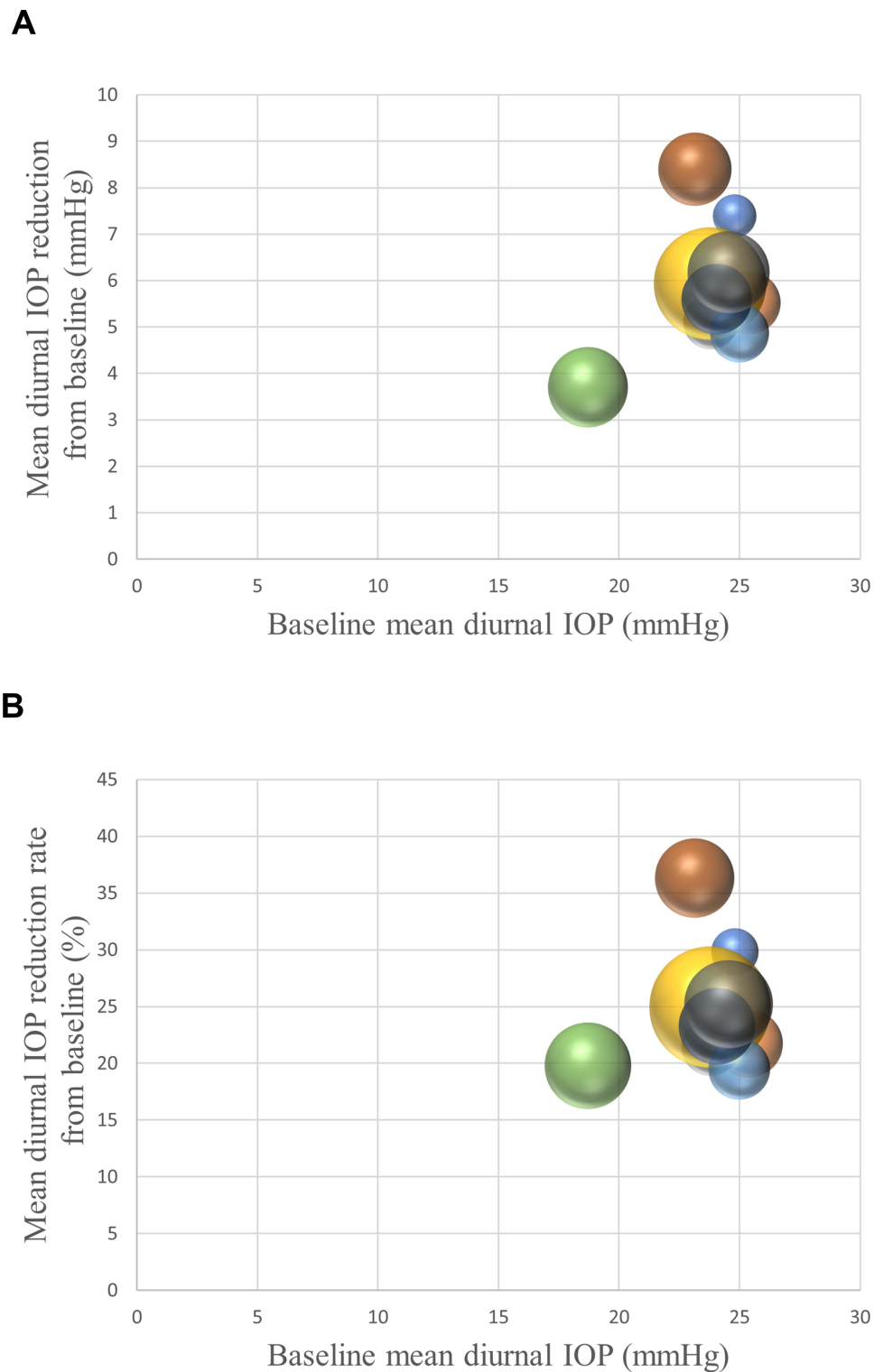
Figure 3 demonstrated the relationships between baseline mean diurnal IOP and mean diurnal IOP reduction or reduction rate from baseline with 0.002% OMDI QD treatment in published articles related to clinical trials using the bubble chart. OMDI was shown to lower mean diurnal IOP by 3.7–7.4 mmHg (20–30%) from baseline. Since OMDI is thought to lower IOP by increasing both trabecular and uveoscleral outflows through EP2 receptor stimulation, the IOP-lowering effects may be influenced by baseline IOP.<sup>23,24,44</sup> There appears to be a positive correlation between baseline IOP and IOP reduction or reduction rate in Figure 3. One retrospective study supported this idea, as NTG patients with a mean baseline IOP of 15.7 mmHg showed a significant reduction in IOP with the topical administration of OMDI, but the range of IOP reduction was only 12.0%–12.8%.<sup>47</sup> However, this is uncertain due to the insufficiency of randomized clinical trials in eyes with baseline IOP less than 21 mmHg, such as those with NTG. Therefore, further studies are warranted.

Moreover, a prospective, open-label, experimental study demonstrated that 0.002% OMDI ophthalmic solution QD provided stable 24-hour IOP reduction throughout the day and night in OAGs or OHTs, which suggested that OMDI could be useful as a first-line treatment for new patients.<sup>48</sup> Another clinically important aspect of the IOP-lowering effect of OMDI is the presence of non-/poor responders, defined as patients with IOP reductions of less than 10% at both 1–2 months and 3–4 months after initiation of administration.<sup>47,49</sup> The frequency of non-responder patients with NTG for QD OMDI treatment in a retrospective study was 22.4%, which could be a higher percentage than those for FP receptor agonist treatment.<sup>47,49</sup> Additional validation is needed to clarify this; however, careful follow-up is recommended after starting ophthalmic treatment.

## Patient Tolerability – OMDI Adverse Events and Patient Adherence

OMDI ophthalmic solution demonstrated acceptable safety and tolerability in 4 to 52 weeks treatment in patients with glaucoma or OHT according to clinical trials.<sup>25–28,35</sup> Table 2 summarizes the adverse events (AEs) of OMDI in published articles related to the clinical trials.<sup>25–28,35</sup> The frequency of AEs of 0.002% OMDI ophthalmic solution QD varied from 14.0% to 92.5% depending on the report. Similarly, the frequency of serious AEs varied from 0% to 6.3%, and AEs leading to discontinuation varied from 0% to 17.5%. Most ocular AEs were considered to be causally related to the study drug, and less frequently reported non-ocular AEs were considered unrelated to the study medication.<sup>25–28,35</sup> Additionally, the serious AEs reported were all considered to be unrelated to the treatment.<sup>25–28,35</sup> The ocular AEs leading to study withdrawal were of mild or moderate severity, including eye pain/foreign body sensation, photophobia, blurred vision, conjunctival hyperemia/conjunctivitis, macular edema/cystoid macular edema (ME/CME), and iritis with anterior chamber cells.<sup>25–28,35</sup> All the cases resolved or were resolving during the study or following study withdrawal.<sup>25–28,35</sup>

Table 3 summarizes major AEs with a frequency of 1% or more associated with the administration of 0.002% OMDI ophthalmic solution QD in the published articles related to clinical trials.<sup>25–28,35</sup> Overall, in patients receiving 0.002% OMDI ophthalmic solution QD ( $n = 360$ ), AEs were observed in 53.6% ( $n = 193$ ). The most frequently reported ocular AE was conjunctival hyperemia, which occurred in 19.7% ( $n = 71$ ) of patients, followed by corneal thickening, which



**Figure 3** Relationship between baseline mean diurnal IOP and mean diurnal IOP reduction (**A**) or reduction rate (**B**) with 0.002% OMDI QD treatment in the published articles related to the clinical trials.

**Notes:** The bubble size indicates the sample size for each study. Data from Aihara et al<sup>25–28</sup> and Olander et al<sup>35</sup>.

**Abbreviations:** IOP, intraocular pressure; OMDI, omidenepag isopropyl; QD, quaque die.

occurred in 5.0% (n = 18). The frequency of ME/CME which was the most common reason for study discontinuation in the RENGE study, being 4.4% (n = 16).<sup>28</sup> The frequency of subjective symptoms was eye pain in 3.6% (n = 13),

**Table 3** Summary of Major Adverse Events Associated with the Topical Administration of 0.002% Omidenepag Isopropyl Ophthalmic Solution Once-Daily in Clinical Trials

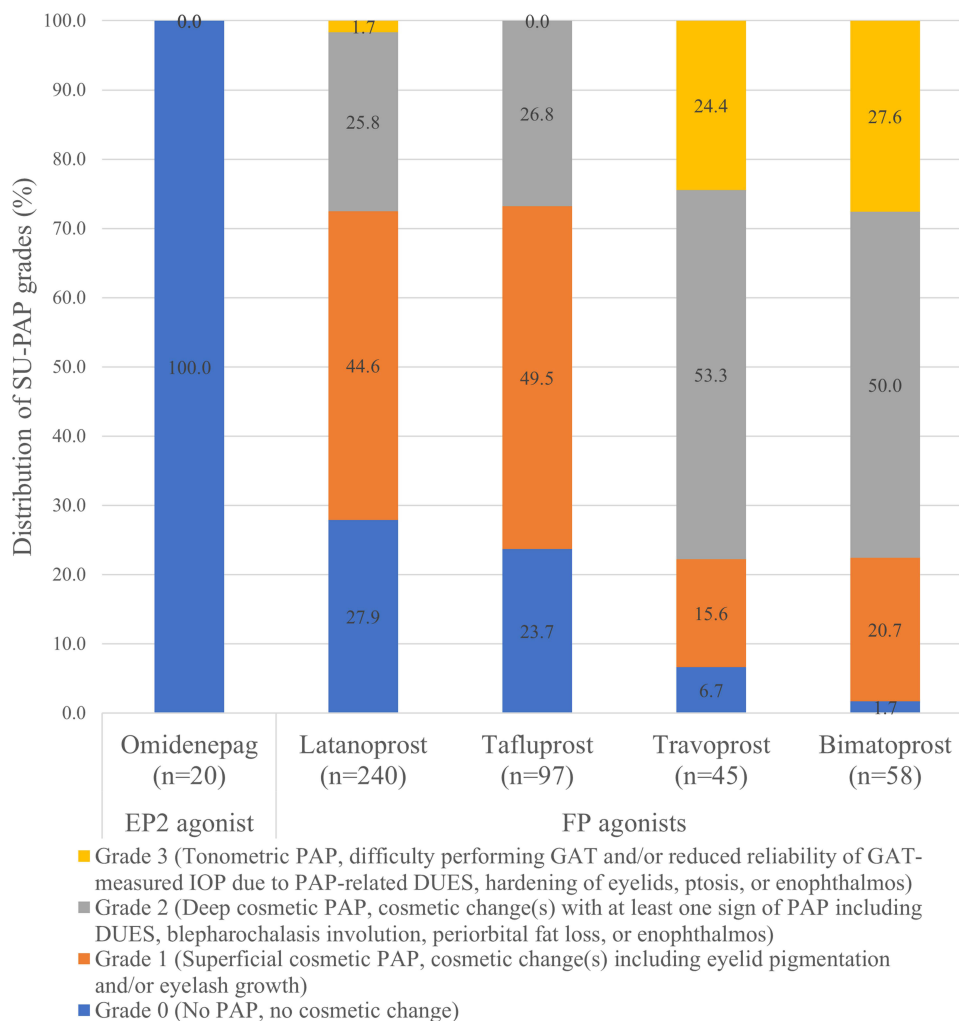
Reference	NCT Number (Trial Feature)	Subjects Analyzed, n	Major AEs Occurring at a Frequency of 1% or More						
			Conjunctival Hyperemia, n (%)	Corneal Thickening, n (%)	Macular Edema/Cystoid Macular Edema, n (%)	Eye Pain, n (%)	Photophobia, n (%)	Blurred Vision, n (%)	Cells in the Anterior Chamber, n (%)
Total		360	71 (19.7)	18 (5.0)	16 (4.4)	13 (3.6)	12 (3.3)	6 (1.7)	5 (1.4)
Aihara et al. J Glaucoma, 2019	NCT01868126	14	2 (14.3)	NA	NA	2 (14.3)	2 (14.3)	NA	NA
Aihara et al. J Glaucoma, 2019	NCT02179008 (SEE-1)	29	5 (17.2)	NA	NA	2 (6.9)	4 (13.8)	NA	NA
Aihara et al. J Glaucoma, 2019	NCT02623738 (AYAME)	22	5 (22.7)	2 (9.1)	NA	NA	NA	NA	NA
Aihara et al. Am J Ophthalmol, 2020	NCT02623738 (AYAME)	94	23 (24.5)	11 (11.7)	NA	4 (4.3)	4 (4.3)	2 (2.1)	NA
Aihara et al, Jpn J Ophthalmol, 2020	NCT02822742 (FUJI)	26	2 (7.7)	NA	NA	NA	NA	NA	2 (7.7)
Aihara et al, Jpn J Ophthalmol, 2021	NCT02822729 (RENGE, Cohort 1)	48	8 (16.7)	0 (0.0)	8 (16.7)	2 (4.2)	NA	1 (2.1)	2 (4.2)
Aihara et al, Jpn J Ophthalmol, 2021	NCT02822729 (RENGE, Cohort 2)	37	8 (21.6)	2 (5.4)	2 (5.4)	0 (0.0)	NA	1 (2.7)	0 (0.0)
Aihara et al, Jpn J Ophthalmol, 2021	NCT02822729 (RENGE, Cohort 3)	40	18 (45.0)	3 (7.5)	6 (15.0)	3 (7.5)	NA	2 (5.0)	1 (2.5)
Olander et al. J Glaucoma, 2021	NCT03858894 (SPECTRUM 6)	50	0 (0.0)	NA	NA	NA	2 (4.0)	NA	NA

**Abbreviations:** NCT, national clinical trial; AE, adverse event; n, number of subjects; NA, not applicable.

photophobia in 3.3% (n = 12), and blurred vision in 1.7% (n = 6). Anterior chamber cells were identified in 1.4% (n = 5) of subjects, while iritis with anterior chamber cells was only observed in 0.8% (n = 3). It is possible that these frequencies are underestimated, as not all clinical trials reported the presence or absence of all AEs. However, it should be useful to have an overview of the relatively frequent AEs that can occur with once-daily topical administration of 0.002% OMDI. Clinically, OMDI-related conjunctival hyperemia has a relatively high frequency, and concomitant OMDI and timolol treatment results in an increased incidence of conjunctival hyperemia.<sup>28</sup> However, it should not be of large concern, as long as an adequate explanation is provided before prescribing, because it is always mild and weaker than that induced by 0.4% ripasudil and it usually settles down with time, as it does with FP agonists.<sup>50,51</sup> Moreover, the average increase in corneal thickness with OMDI is mild, less than 20  $\mu\text{m}$ , which is within the limits of the diurnal variation in corneal thickness, and has no clinical significance related to visual acuity or IOP measurements in most cases.<sup>28</sup> However, corneal thickening could be a problem for those with a thinner cornea, for example due to a history of LASIK, because some may complain of decreased naked eye visual acuity with OMDI treatment. In addition, the drug should be discontinued or changed if subjective symptoms are severe, or if there are complications of ME/CME or iritis that may lead to vision loss. As a special note, in the RENGE study, all cases of OMDI-related ME/CME occurred in eyes with intraocular lens (IOL) implants, and the incidence of ME/CME in pseudophakia was almost half.<sup>28</sup> Therefore, OMDI has been contraindicated in patients with pseudophakia or aphakia.<sup>28,52</sup> Moreover, it should also be administered cautiously to patients with iritis or uveitis, which could show increased risk of CME.<sup>52,53</sup> It should be noted that the use of OMDI is contraindicated in patients who are allergic to any of its components or who are receiving tafluprost, a FP agonist due to the possibility of it causing ocular inflammation.<sup>52,53</sup> Therefore, it is advisable to avoid the concomitant use of OMDI and other FP agonist eye drops.<sup>52</sup> Moreover, since there are no clinical reports on the concomitant use of OMDI with glaucoma eye drops other than timolol, it is recommended that OMDI should be used with caution until its safety is confirmed.<sup>52</sup> Future clinical studies will be needed to determine the efficacies and AEs of OMDI in combination with other glaucoma ophthalmic solutions. Additional information should be provided by the post-marketing surveillance of OMDI.

As above, OMDI is usually well-tolerated and should have good treatment adherence because of the QD dosing regimen, as is the case with FP agonists.<sup>25,34,36,54</sup> In fact, OMDI treatment compliance rates and dosing adherence determinations for 1 or 3 months were reported to be high ( $\geq 75\%$ ) in a clinical trial.<sup>25</sup> A post-marketing retrospective study of 0.002% OMDI ophthalmic solution also demonstrated that the early persistence of OMDI was good, and initial OMDI monotherapy does not largely differ from initial latanoprost monotherapy.<sup>55</sup> Additionally, the OMDI discontinuation rate until 3 months was 22% in total, because of an insufficient IOP-lowering efficiency (11%), followed by conjunctival hyperemia (4%) and visual acuity disturbance (2%).<sup>55</sup> Therefore, clinicians should also be cautious of early failure in OMDI treatment, and patients should be informed of the risks and benefits of treatment with OMDI to increase the likelihood of long-term adherence to self-medication with eye drops.

Additionally, it is clinically important to note that OMDI has no or little ocular PAP side effects, including eyelid pigmentation, eyelash growth, and DUES, because of the no binding affinity to the FP receptor.<sup>15,56</sup> Previously, a grading or subjective measurement of PAP had been attempted for each PAP component such as conjunctival hyperemia, eyelash changes, and DUES. However, these measurements seem to be too complex to use in real-world situations and do not take into account the underlying mechanisms and difficulty of measuring IOP.<sup>15,57–59</sup> Therefore, we recently constructed an in-house PAP grading system (Shimane University PAP Grading System, SU-PAP) which considers the mechanisms involved in the development of cosmetic PAPs (ie, superficial and deep), and the effect of PAP in glaucoma management (ie, difficult IOP measurements).<sup>15</sup> SU-PAP can classify PAP into four grades, allowing for the assessment of its progression. (Figure 4). Moreover, in previous clinical trials, none of the eyes treated with OMDI showed PAP,<sup>25–28,35</sup> and patients who were switched from conventional PGF<sub>2 $\alpha$</sub>  analogs (FP agonists) to OMDI showed significant improvements in PAP signs including DUES over time without significant IOP changes.<sup>60–62</sup> Currently, the results of long-term adherence of OMDI treatment are unknown. However, since OMDI does not induce PAP, it may not only be useful in the treatment of patients with PAP or those concerned by it, but also achieve a better long-term adherence than that of FP agonists.



**Figure 4** Distribution of PAP grade in each prostaglandin receptor agonist using patient groups as assessed by SU-PAP, which considers mechanisms involved in the development of cosmetic PAP and effects of PAP in glaucoma management. SU-PAP can classify PAP into four levels, allowing for the assessment of PAP progression. OMDI did not cause PAP.<sup>15</sup>

**Note:** Data from Tanito et al.

**Abbreviations:** PAP, prostaglandin-associated periorbitopathy; SU-PAP, Shimane University PAP Grading System; OMDI, omidenepag isopropyl.

## Case of OMDI-Related Macular Edema

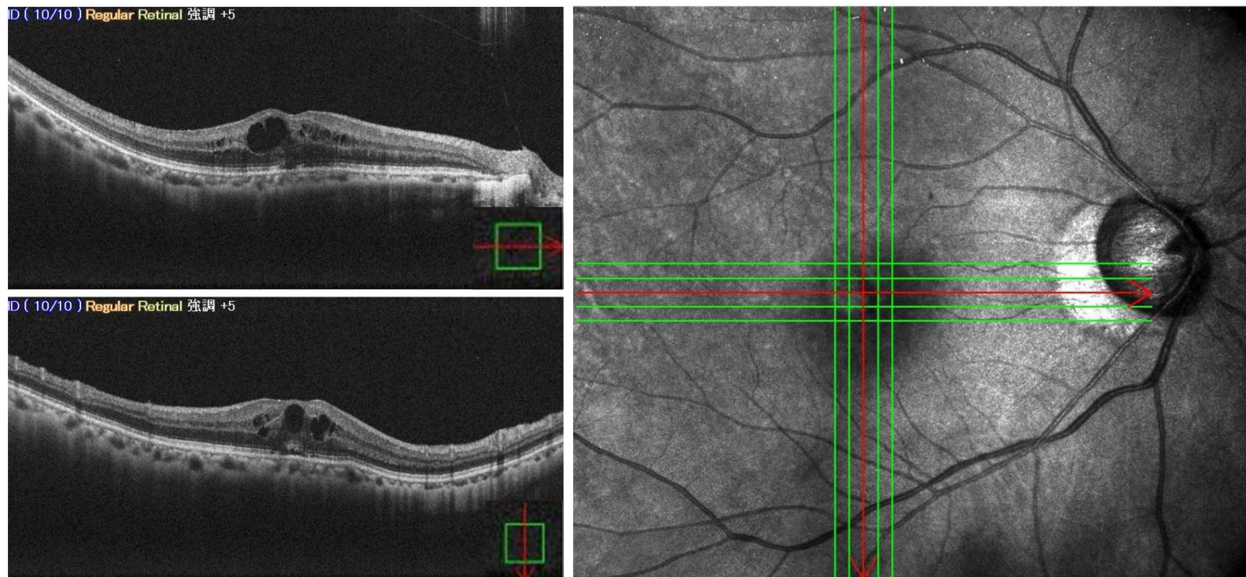
The mechanism of ME/CME and iritis caused by OMDI has not been elucidated to date. However, considering that PGE<sub>2</sub> could cause ocular inflammatory reactions similar to those caused by PGF<sub>2α</sub> and all OMDI-related ME/CME cases occurred in IOL-implanted eyes in the clinical trial, EP2 stimulation may cause them when the blood-aqueous or blood-retinal barriers in the treated eye had been damaged.<sup>13,53,63–65</sup> Thus, the effectiveness and safety of OMDI in secondary glaucoma subtypes, in which the eyes received ocular surgery or were inflicted with other retinal diseases, should be closely evaluated. We experienced a case of ME/CME associated with the accidental usage of OMDI in patients with glaucoma after uncomplicated cataract surgery and successfully treated with sub-Tenon triamcinolone injection (STTA) and sub-Tenon injection of corticosteroids. Consent to publish the case report was obtained. This report does not contain any personal information that could lead to the identification of the patient.

A 64-year-old Japanese female patient was referred to the Matsue Red Cross Hospital with a complaint of blurred vision in the right eye. Her general clinical history was unremarkable. She had been taking 2% carteolol, a nonselective β-adrenoceptor antagonist ophthalmic solution, QD for ocular hypertension and underwent uneventful cataract surgery with posterior chamber IOL implantation in her right eye 3 years before the onset of symptoms. She was prescribed and

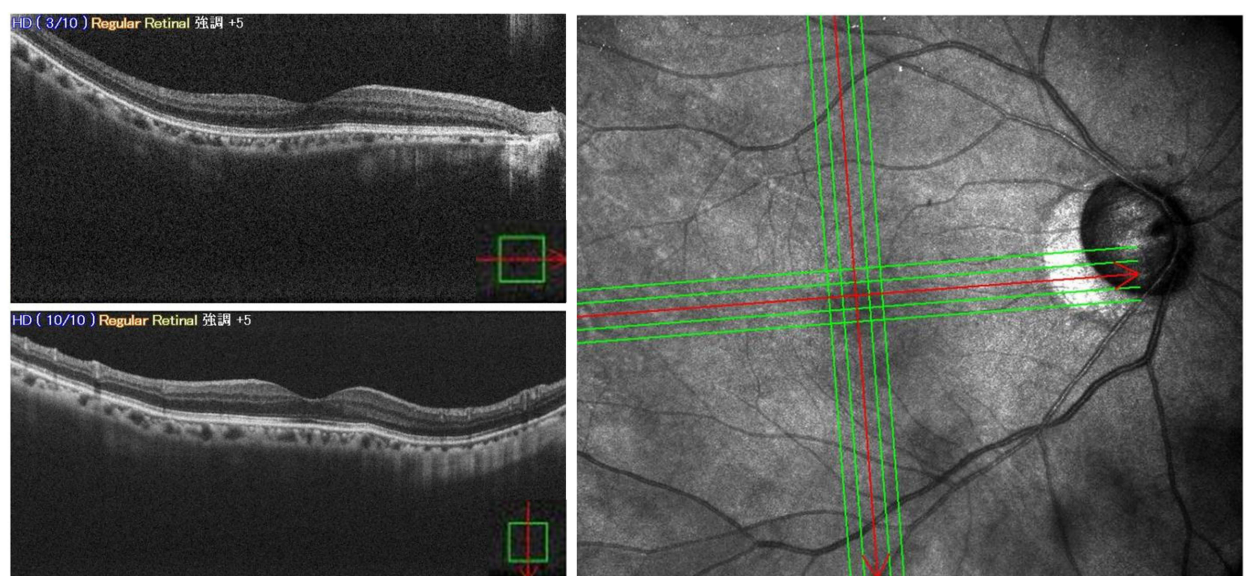


started using 0.002% OMDI ophthalmic solution QD additionally for 5 months before the onset. The best-corrected visual acuity (BCVA) was 20/25 and the IOP was 10 mmHg at initial examination. The anterior and posterior chambers were clear, and the anterior chamber flare was 17.9 pc/msec. Fundoscopy and spectral domain optical coherence tomography (SD-OCT) revealed a CME with serous retinal detachment (SRD) (Figure 5A). The patient wanted to improve her symptoms promptly, so OMDI was discontinued, and the patient was treated with STTA 20mg on the same day. After two months, an improvement in subjective symptoms was obtained, and the BCVA improved to 20/20. The IOP was 12 mmHg, and the flare was 10.7 pc/msec. SD-OCT showed resolution of the CME with SRD (Figure 5B). The case has been recurrence-free for 3 months, and the IOP has been controlled at 10–12 mmHg.

A



B



**Figure 5 (A)** Five months after starting 0.002% OMDI QD treatment, CME with SRD in the right pseudophakic eye was shown on SD-OCT. There was no pathology that could cause CME other than the use of OMDI for IOL-implanted eyes. The discontinuation of OMDI and administration of STTA was decided. **(B)** Two months later, the recovery of CME with SRD was observed. The horizontal and vertical red arrows indicate the cross-sectional line scans in 5A and 5B.

**Abbreviations:** OMDI, omidenepag isopropyl; QD, quaque die; CME, cystoid macular edema; SRD, serous retinal detachment; SD-OCT, spectral domain optical coherence tomography; IOL, intraocular lens; STTA, sub-Tenon triamcinolone injection.



In the RENGE study, all cases of OMDI-related ME/CME were mild or moderate in severity, and after discontinuation of OMDI treatment, standard treatment with topical nonsteroidal anti-inflammatory drugs or steroids was successful, and the time from onset of ME/CME to recovery was reported to be 89.5 days.<sup>13,28</sup> It is well-known that the topical administration of FP agonists after cataract surgery can lead to CME, which is usually treated with the discontinuation of eye drops, corticosteroid eye drops, and nonsteroidal anti-inflammatory drugs (NSAIDs), although the recovery can require 1 month or more.<sup>53,63–65</sup> One case report demonstrated that STTA resulted in the early disappearance of CME associated with prostaglandin treatment after cataract surgery.<sup>63</sup> Therefore, we selected STTA for OMDI-related ME/CME treatment, which resulted in a relatively early improvement of ME/CME and subjective symptoms. Moreover, since the CME decreased relatively early after sub-Tenon injection of corticosteroids and the flare value also decreased, some inflammation may have been involved in the development of OMDI-related ME/CME.

## Conclusion

OMDI is the world's first commercially available selective EP2 receptor agonist, which promotes aqueous humor outflow via the trabecular and uveoscleral outflow pathways. The once-daily topical administration of 0.002% OMDI possesses IOP-lowering effects non-inferior to those of latanoprost QD, without PAP complications. OMDI was also effective and well-tolerated in non-/poor responders to latanoprost in short term. Furthermore, it also showed a stable IOP-lowering effect for a long period, and its concomitant use with timolol enhanced the IOP-lowering effect. Moreover, OMDI demonstrated acceptable safety and tolerability with good adherence, and can be used in almost every patient. However, OMDI shows some AEs such as conjunctival hyperemia, corneal thickening, ME/CME, and ocular inflammation. Especially, since there are no clinical reports on the concomitant use of OMDI with glaucoma eye drops other than timolol, it is recommended that OMDI should be used with caution until safety is confirmed. Additionally, OMDI is contraindicated in patients who are allergic to the product, in aphakic or pseudophakic eyes, and in combination with tafluprost eye drops. If used appropriately in the right patients, OMDI could be an effective treatment option for glaucoma and OHT as a first-line alternative to FP agonists.

## Author Contributions

All authors made a significant contribution to the work reported, whether that is in the conception, study design, execution, acquisition of data, analysis and interpretation, or in all these areas; took part in drafting, revising or critically reviewing the article; gave final approval of the version to be published; have agreed on the journal to which the article has been submitted; and agree to be accountable for all aspects of the work.

## Funding

There is no funding to report.

## Disclosure

Santen Pharmaceutical Co., Ltd. provided information on the status of latest clinical trials of OMDI and assisted us in the preparation of Figures 1 and 2. No involvement was made in the writing or reviewing. The authors report no conflicts of interest in this work.

## References

1. Bourne RR, Taylor HR, Flaxman SR, et al. Number of people blind or visually impaired by glaucoma worldwide and in world regions 1990–2010: a meta-analysis. *PLoS One*. 2016;11(10):e0162229. doi:10.1371/journal.pone.0162229
2. Flaxman SR, Bourne RRA, Resnikoff S, et al. Global causes of blindness and distance vision impairment 1990–2020: a systematic review and meta-analysis. *Lancet Global Health*. 2017;5(12):e1221–e34. doi:10.1016/S2214-109X(17)30393-5
3. Steinmetz JD, Bourne RRA, Briant PS, Causes of blindness and vision impairment in 2020 and trends over 30 years, and prevalence of avoidable blindness in relation to VISION 2020: the right to sight: an analysis for the global burden of disease study. *Lancet Global Health*. 2021;9(2):e144–e60. doi:10.1016/S2214-109X(20)30489-7
4. Matsuo M, Fukuda H, Omura T, Tanito M. Agreement in glaucoma type diagnosis between referring and referred ophthalmologists. *Graefes Arch Clin Exp Ophthalmol*. 2021;4:1–2.

5. Ernest PJ, Schouten JS, Beckers HJ, Hendrikse F, Prins MH, Webers CA. An evidence-based review of prognostic factors for glaucomatous visual field progression. *Ophthalmology*. 2013;120(3):512–519. doi:10.1016/j.ophtha.2012.09.005
6. Heijl A, Leske MC, Bengtsson B, Hyman L, Bengtsson B, Hussein M. Reduction of intraocular pressure and glaucoma progression: results from the Early Manifest Glaucoma Trial. *Arch Ophthalmol*. 2002;120(10):1268–1279. doi:10.1001/archophth.120.10.1268
7. Kass MA, Heuer DK, Higginbotham EJ, et al. The Ocular Hypertension Treatment Study: a randomized trial determines that topical ocular hypotensive medication delays or prevents the onset of primary open-angle glaucoma. *Arch Ophthalmol*. 2002;120(6):701–13; discussion 829–30. doi:10.1001/archophth.120.6.829
8. Garway-Heath DF, Crabb DP, Bunce C, et al. Latanoprost for open-angle glaucoma (UKGTS): a randomised, multicentre, placebo-controlled trial. *Lancet*. 2015;385(9975):1295–1304. doi:10.1016/S0140-6736(14)62111-5
9. Camras CB, Bitto LZ, Eakins KE. Reduction of intraocular pressure by prostaglandins applied topically to the eyes of conscious rabbits. *Invest Ophthalmol Vis Sci*. 1977;16(12):1125–1134.
10. Camras CB, Siebold EC, Lustgarten JS, et al. Maintained reduction of intraocular pressure by prostaglandin F2 alpha-1-isopropyl ester applied in multiple doses in ocular hypertensive and glaucoma patients. *Ophthalmology*. 1989;96(9):1329–36; discussion 36–7. doi:10.1016/S0161-6420(89)32717-5
11. Camras CB, Schumer RA, Marsk A, et al. Intraocular pressure reduction with PhXA34, a new prostaglandin analogue, in patients with ocular hypertension. *Arch Ophthalmol*. 1992;110(12):1733–1738. doi:10.1001/archophth.1992.01080240073034
12. Klimko PG, Sharif NA. Discovery, characterization and clinical utility of prostaglandin agonists for the treatment of glaucoma. *Br J Pharmacol*. 2019;176(8):1051–1058. doi:10.1111/bph.14327
13. Aihara M. Prostanoid receptor agonists for glaucoma treatment. *Jpn J Ophthalmol*. 2021;65(5):581–590. doi:10.1007/s10384-021-00844-6
14. Winkler NS, Fautsch MP. Effects of prostaglandin analogues on aqueous humor outflow pathways. *J Ocular Pharmacol Ther*. 2014;30(2–3):102–109. doi:10.1089/jop.2013.0179
15. Tanito M, Ishida A, Ichioka S, et al. Proposal of a simple grading system integrating cosmetic and tonometric aspects of prostaglandin-associated periorbitopathy. *Medicine*. 2021;100(34):e26874. doi:10.1097/MD.00000000000026874
16. Sakata R, Chang PY, Sung KR, et al. Prostaglandin-associated periorbitopathy syndrome (PAPS): addressing an unmet clinical need. *Semin Ophthalmol*;2021. 1–8. doi:10.1080/08820538.2021.2003824
17. Miki T, Naito T, Fujiwara M, et al. Effects of pre-surgical administration of prostaglandin analogs on the outcome of trabeculectomy. *PLoS One*. 2017;12(7):e0181550. doi:10.1371/journal.pone.0181550
18. Choplin N, Bernstein P, Batoosingh AL, Whitcup SM. A randomized, investigator-masked comparison of diurnal responder rates with bimatoprost and latanoprost in the lowering of intraocular pressure. *Surv Ophthalmol*. 2004;49(Suppl 1):S19–25. doi:10.1016/j.survophthal.2003.12.016
19. Ikeda Y, Mori K, Ishibashi T, Naruse S, Nakajima N, Kinoshita S. Latanoprost nonresponders with open-angle glaucoma in the Japanese population. *Jpn J Ophthalmol*. 2006;50(2):153–157. doi:10.1007/s10384-005-0293-x
20. Saeki T, Ota T, Aihara M, Araie M. Effects of prostanoid EP agonists on mouse intraocular pressure. *Invest Ophthalmol Vis Sci*. 2009;50(5):2201–2208. doi:10.1167/iovs.08-2800
21. Woodward DF, Bogardus AM, Donello JE, et al. Molecular characterization and ocular hypotensive properties of the prostanoid EP2 receptor. *J Ocular Pharmacol Ther*. 1995;11(3):447–454. doi:10.1089/jop.1995.11.447
22. Nilsson SF, Drecoll E, Lütjen-Drecoll E, et al. The prostanoid EP2 receptor agonist butaprost increases uveoscleral outflow in the cynomolgus monkey. *Invest Ophthalmol Vis Sci*. 2006;47(9):4042–4049. doi:10.1167/iovs.05-1627
23. Kirihara T, Taniguchi T, Yamamura K, et al. Pharmacologic characterization of omidenepag isopropyl, a novel selective EP2 receptor agonist, as an ocular hypotensive agent. *Invest Ophthalmol Vis Sci*. 2018;59(1):145–153. doi:10.1167/iovs.17-22745
24. Fuwa M, Toris CB, Fan S, et al. Effects of a novel selective EP2 receptor agonist, omidenepag isopropyl, on aqueous humor dynamics in laser-induced ocular hypertensive monkeys. *J Ocular Pharmacol Ther*. 2018;34(7):531–537. doi:10.1089/jop.2017.0146
25. Aihara M, Lu F, Kawata H, et al. Phase 2, randomized, dose-finding studies of omidenepag isopropyl, a selective EP2 agonist, in patients with primary open-angle glaucoma or ocular hypertension. *J Glaucoma*. 2019;28(5):375–385. doi:10.1097/IJG.0000000000001221
26. Aihara M, Lu F, Kawata H, Iwata A, Odani-Kawabata N, Shams NK. Omidenepag isopropyl versus latanoprost in primary open-angle glaucoma and ocular hypertension: the Phase 3 AYAME Study. *Am J Ophthalmol*. 2020;220:53–63. doi:10.1016/j.ajo.2020.06.003
27. Aihara M, Ropo A, Lu F, et al. Intraocular pressure-lowering effect of omidenepag isopropyl in latanoprost non-/low-responder patients with primary open-angle glaucoma or ocular hypertension: the FUJI study. *Jpn J Ophthalmol*. 2020;64(4):398–406. doi:10.1007/s10384-020-00748-x
28. Aihara M, Lu F, Kawata H, Iwata A, Odani-Kawabata N. Twelve-month efficacy and safety of omidenepag isopropyl, a selective EP2 agonist, in open-angle glaucoma and ocular hypertension: the RENGE study. *Jpn J Ophthalmol*. 2021;65:810–819. doi:10.1007/s10384-021-00868-y
29. Prasanna G, Carreiro S, Anderson S, et al. Effect of PF-04217329 a prodrug of a selective prostaglandin EP(2) agonist on intraocular pressure in preclinical models of glaucoma. *Exp Eye Res*. 2011;93(3):256–264. doi:10.1016/j.exer.2011.02.015
30. Schachar RA, Raber S, Courtney R, Zhang M. A phase 2, randomized, dose-response trial of taprenepag isopropyl (PF-04217329) versus latanoprost 0.005% in open-angle glaucoma and ocular hypertension. *Curr Eye Res*. 2011;36(9):809–817. doi:10.3109/02713683.2011.593725
31. Yanochko GM, Affolter T, Eighmy JJ, et al. Investigation of ocular events associated with taprenepag isopropyl, a topical EP2 agonist in development for treatment of glaucoma. *J Ocular Pharmacol Ther*. 2014;30(5):429–439. doi:10.1089/jop.2013.0222
32. Bertrand JA, Woodward DF, Sherwood JM, Wang JW, Overby DR. The role of EP(2) receptors in mediating the ultra-long-lasting intraocular pressure reduction by JV-GL1. *Br J Ophthalmol*. 2021;105(11):1610–1616. doi:10.1136/bjophthalmol-2020-317762
33. Iwamura R, Tanaka M, Okanari E, et al. Identification of a selective, non-prostanoid EP2 receptor agonist for the treatment of glaucoma: omidenepag and its prodrug omidenepag isopropyl. *J Med Chem*. 2018;61(15):6869–6891. doi:10.1021/acs.jmedchem.8b00808
34. Aihara M, Lu F, Kawata H, et al. Pharmacokinetics, safety, and intraocular pressure-lowering profile of omidenepag isopropyl, a selective, nonprostaglandin, prostanoid EP2 receptor agonist, in healthy Japanese and caucasian volunteers (Phase I Study). *J Ocular Pharmacol Ther*. 2019;35(10):542–550. doi:10.1089/jop.2019.0044
35. Olander KW, Sato MA, Abrams MA, et al. A randomized phase 2 trial comparing omidenepag isopropyl 0.002% once and twice daily in subjects with primary open-angle glaucoma or ocular hypertension (SPECTRUM-6). *J Glaucoma*. 2021;30(6):473–480. doi:10.1097/IJG.0000000000001836

36. Prum BE Jr, Rosenberg LF, Gedde SJ, et al. Primary open-angle glaucoma preferred practice pattern((R)) guidelines. *Ophthalmology*. 2016;123(1): P41–p111. doi:10.1016/j.ophtha.2015.10.053
37. Müskens RP, Wolfs RC, Wittman JC, et al. Topical beta-blockers and mortality. *Ophthalmology*. 2008;115(11):2037–2043. doi:10.1016/j.ophtha.2008.07.004
38. Impagnatiello F, Bastia E, Almirante N, et al. Prostaglandin analogues and nitric oxide contribution in the treatment of ocular hypertension and glaucoma. *Br J Pharmacol*. 2019;176(8):1079–1089. doi:10.1111/bph.14328
39. Yamamoto Y, Taniguchi T, Inazumi T, et al. Effects of the selective EP2 receptor agonist omidenepag on adipocyte differentiation in 3T3-L1 cells. *J Ocular Pharmacol Ther*. 2020;36(3):162–169. doi:10.1089/jop.2019.0079
40. Ida Y, Hikage F, Umetsu A, Ida H, Ohguro H. Omidenepag, a non-prostanoid EP2 receptor agonist, induces enlargement of the 3D organoid of 3T3-L1 cells. *Sci Rep*. 2020;10(1):16018. doi:10.1038/s41598-020-72538-x
41. Esaki Y, Katsuta O, Kamio H, et al. The antiglaucoma agent and EP2 receptor agonist omidenepag does not affect eyelash growth in mice. *J Ocular Pharmacol Ther*. 2020;36(7):529–533. doi:10.1089/jop.2020.0003
42. Hikage F, Ida Y, Ouchi Y, Watanabe M, Ohguro H. Omidenepag, a selective, prostanoid EP2 agonist, does not suppress adipogenesis in 3D organoids of human orbital fibroblasts. *Transl Vis Sci Technol*. 2021;10(4):6. doi:10.1167/tvst.10.4.6
43. Ichioka H, Ida Y, Watanabe M, Ohguro H, Hikage F. Prostaglandin F2 $\alpha$  and EP2 agonists, and a ROCK inhibitor modulate the formation of 3D organoids of Grave's orbitopathy related human orbital fibroblasts. *Exp Eye Res*. 2021;205:108489. doi:10.1016/j.exer.2021.108489
44. Nakamura N, Honjo M, Yamagishi R, Igarashi N, Sakata R, Aihara M. Effects of selective EP2 receptor agonist, omidenepag, on trabecular meshwork cells, Schlemm's canal endothelial cells and ciliary muscle contraction. *Sci Rep*. 2021;11(1):16257. doi:10.1038/s41598-021-95768-z
45. Fuwa M, Shimazaki A, Odani-Kawabata N, et al. Additive intraocular pressure-lowering effects of a novel selective EP2 receptor agonist, omidenepag isopropyl, combined with existing antiglaucoma agents in conscious ocular normotensive monkeys. *J Ocular Pharmacol Ther*. 2021;37(4):223–229. doi:10.1089/jop.2020.0071
46. Woodward DF, Wang JW, Stamer WD, Lütjen-Drecoll E, Krauss AH, Toris CB. Antiglaucoma EP(2) agonists: a long road that led somewhere. *J Ocular Pharmacol Ther*. 2019;35(9):469–474. doi:10.1089/jop.2019.0041
47. Inoue K, Inoue J, Kunimatsu-Sanuki S, et al. Short-term efficacy and safety of omidenepag isopropyl in patients with normal-tension glaucoma. *Clin Ophthalmol*. 2020;14:2943–2949. doi:10.2147/OPHT.S271789
48. Shiratori N, Nishio Y, Takeda A, et al. Twenty-four-hour intraocular pressure control with omidenepag isopropyl 0.002% in patients with glaucoma and ocular hypertension. *Clin Ophthalmol*. 2021;15:3997–4003. doi:10.2147/OPHT.S333042
49. Inoue K, Setogawa A, Tomita G. Nonresponders to prostaglandin analogs among normal-tension glaucoma patients. *J Ocular Pharmacol Ther*. 2016;32(2):90–96. doi:10.1089/jop.2015.0086
50. Terao E, Nakakura S, Fujisawa Y, et al. Time course of conjunctival hyperemia induced by omidenepag isopropyl ophthalmic solution 0.002%: a pilot, comparative study versus ripasudil 0.4. *BMJ Open Ophthalmol*. 2020;5(1):e000538. doi:10.1136/bmjophth-2020-000538
51. Honrubia F, García-Sánchez J, Polo V, de la Casa JM, Soto J. Conjunctival hyperaemia with the use of latanoprost versus other prostaglandin analogues in patients with ocular hypertension or glaucoma: a meta-analysis of randomised clinical trials. *Br J Ophthalmol*. 2009;93(3):316–321. doi:10.1136/bjo.2007.135111
52. Santen Pharmaceutical. EYBELIS ophthalmic solution 0.002%: prescribing information [Japanese]; 2018. Available from: [https://www.santen.co.jp/medical-channel/di/tenpu/DD067\\_eybelis.pdf](https://www.santen.co.jp/medical-channel/di/tenpu/DD067_eybelis.pdf). Accessed January 9, 2022.
53. Holló G, Aung T, Cantor LB, Aihara M. Cystoid macular edema related to cataract surgery and topical prostaglandin analogs: mechanism, diagnosis, and management. *Surv Ophthalmol*. 2020;65(5):496–512. doi:10.1016/j.survophthal.2020.02.004
54. European Glaucoma Society Terminology and Guidelines for Glaucoma. 4th edition Chapter 3: treatment principles and options supported by the EGS foundation: part 1: foreword; introduction; glossary; Chapter 3 treatment principles and options. *Br J Ophthalmol*. 2017;101(6):130–195. doi:10.1136/bjophthalmol-2016-EGSguideline.003
55. Nakakura S, Kanamori A, Fukuma Y, Wakabayashi S, Nagata Y, Adachi M. Evaluation of early medication persistence with omidenepag isopropyl, a topical selective prostaglandin EP2 agonist, in patients with glaucoma: a retrospective two-institute study. *BMJ open*. 2021;11(1):e040301. doi:10.1136/bmjopen-2020-040301
56. Inoue K, Shiokawa M, Katakura S, et al. Periocular adverse reactions to omidenepag isopropyl: periocular adverse reactions to omidenepag isopropyl. *Am J Ophthalmol*. 2021;237:114–121. doi:10.1016/j.ajo.2021.12.011
57. Alm A, Stjernschantz J. Effects on intraocular pressure and side effects of 0.005% latanoprost applied once daily, evening or morning. A comparison with timolol. Scandinavian latanoprost study group. *Ophthalmology*. 1995;102(12):1743–1752. doi:10.1016/S0161-6420(95)30798-1
58. Johnstone MA. Hypertrichosis and increased pigmentation of eyelashes and adjacent hair in the region of the ipsilateral eyelids of patients treated with unilateral topical latanoprost. *Am J Ophthalmol*. 1997;124(4):544–547. doi:10.1016/S0002-9394(14)70870-0
59. Kim HW, Choi YJ, Lee KW, Lee MJ. Periocular changes associated with prostaglandin analogs in Korean patients. *BMC Ophthalmol*. 2017;17(1):126. doi:10.1186/s12886-017-0521-4
60. Nakakura S, Terao E, Fujisawa Y, Tabuchi H, Kiuchi Y. Changes in prostaglandin-associated periorbital syndrome after switch from conventional prostaglandin F2 $\alpha$  treatment to omidenepag isopropyl in 11 consecutive patients. *J Glaucoma*. 2020;29(4):326–328. doi:10.1097/IJG.0000000000001442
61. Oogi S, Nakakura S, Terao E, Fujisawa Y, Tabuchi H, Kiuchi Y. One-year follow-up study of changes in prostaglandin-associated periorbital syndrome after switch from conventional prostaglandin f2alpha to omidenepag isopropyl. *Cureus*. 2020;12(8):e10064. doi:10.7759/cureus.10064
62. Sakata R, Fujishiro T, Saito H, et al. Recovery of deepening of the upper eyelid sulcus after switching from prostaglandin FP receptor agonists to EP2 receptor agonist: a 3-month prospective analysis. *Jpn J Ophthalmol*. 2021;65(5):591–597. doi:10.1007/s10384-021-00855-3
63. Matsuura K, Sasaki S, Uotani R. Successful treatment of prostaglandin-induced cystoid macular edema with subtenon triamcinolone. *Clin Ophthalmol*. 2012;6:2105–2108. doi:10.2147/OPHT.S39542
64. Sacchi M, Villani E, Gilardoni F, Nucci P. Efficacy of intravitreal dexamethasone implant for prostaglandin-induced refractory pseudophakic cystoid macular edema: case report and review of the literature. *Clin Ophthalmol*. 2014;8:1253–1257. doi:10.2147/OPHT.S63829
65. Makri OE, Tsapardoni FN, Plotas P, Ifantis N, Xanthopoulou PT, Georgakopoulos CD. Cystoid macular edema associated with preservative-free latanoprost after uncomplicated cataract surgery: case report and review of the literature. *BMC Res Notes*. 2017;10(1):127. doi:10.1186/s13104-017-2448-5

Clinical Ophthalmology

Dovepress

### Publish your work in this journal

Clinical Ophthalmology is an international, peer-reviewed journal covering all subspecialties within ophthalmology. Key topics include: Optometry; Visual science; Pharmacology and drug therapy in eye diseases; Basic Sciences; Primary and Secondary eye care; Patient Safety and Quality of Care Improvements. This journal is indexed on PubMed Central and CAS, and is the official journal of The Society of Clinical Ophthalmology (SCO). The manuscript management system is completely online and includes a very quick and fair peer-review system, which is all easy to use. Visit <http://www.dovepress.com/testimonials.php> to read real quotes from published authors.

Submit your manuscript here: <https://www.dovepress.com/clinical-ophthalmology-journal>