

# Leucine-rich alpha-2-glycoprotein-I is up-regulated in colorectal cancer and is a tumor promoter

Qian Zhang<sup>1,2</sup>  
Rui Huang<sup>1,2</sup>  
Qingchao Tang<sup>1,2</sup>  
Yang Yu<sup>1,2</sup>  
Quanlong Huang<sup>1,2</sup>  
Yinggang Chen<sup>1,2</sup>  
Guiyu Wang<sup>1,2</sup>  
Xishan Wang<sup>2,3</sup>

<sup>1</sup>Department of Colorectal Surgery, The Second Affiliated Hospital of Harbin Medical University, Harbin, China; <sup>2</sup>Colorectal Cancer Center, Colorectal Cancer Institute of Harbin Medical University, Harbin, China; <sup>3</sup>Department of Colorectal Surgery, Cancer Hospital of Chinese Academy of Medical Science, Beijing, China

Correspondence: Guiyu Wang;  
Qian Zhang  
Department of Colorectal Surgery,  
The Second Affiliated Hospital of Harbin  
Medical University, No. 246 Xuefu  
Road, Harbin, Heilongjiang Province  
150086, China  
Tel/fax +86 451 8629 7661  
Email [guiyuwang@163.com](mailto:guiyuwang@163.com);  
[zhangqian1171@126.com](mailto:zhangqian1171@126.com)

**Background:** Leucine-rich  $\alpha$ -2-glycoprotein-1 (LRG1) is differentially expressed in many kinds of diseases including cancer, however, it has not been thoroughly studied yet.

**Purpose:** The objective of this study was to detect the expression and potential mechanism of LRG1 in colorectal cancer (CRC). In our study, we examined LRG1 levels in CRC tissue and plasma with quantitative real-time polymerase chain reaction and enzyme-linked immunosorbent assay, respectively. The effect of LRG1 on cancer cells was detected with transwell and MTT assays.

**Results:** The average plasma LRG1 level in CRC was significantly higher than in polyp group ( $P=0.002$ ) and healthy controls ( $P<0.001$ ). Second, plasma LRG1 was positively associated with CA19-9 ( $r=0.133$ ,  $P=0.039$ ) and neutrophil ratio ( $r=0.403$ ,  $P<0.001$ ). Third, plasma LRG1 of stage IV patients was dramatically different from that of stage I, stage II or stage III patients ( $P<0.001$ ). LRG1 mRNA expression levels were about 2-fold higher in CRCs compared to normal tissues ( $P<0.001$ ). And levels of plasma LRG1 were found to be a risk factor in CRC in univariate survival analysis of colorectal prognosis ( $P=0.013$ , hazard ratio [HR]=1.803, 95% CI: 1.521–2.137), and multivariate analysis showed that LRG1 was an independent risk factor ( $P<0.001$ , HR=1.492, 95% CI: 1.223–1.820). The patients with higher plasma LRG1 value presented with poorer outcome ( $P=0.013$ ). Functional experiments showed that LRG1 could promote the invasion and growth ability of cells. LRG1 was increased in plasma and tissue compared with that of controls and LRG1 may predict prognosis of CRC patients and LRG1 maybe a tumor promoter.

**Conclusion:** LRG1 is increased in CRC patients and might serve as a tumor promoter.

**Keywords:** adenomatous polyps, CA19-9 antigen, colorectal neoplasms, leucine-rich alpha-2-glycoprotein, prognosis, tumor promoter

## Introduction

Colorectal cancer (CRC) is the third most common cancer in males and females, with an estimated 135,430 new cases and 50,260 deaths in the USA in 2017.<sup>1</sup> The overall incidence of CRC is 5% in the general population, and the 5-year survival rate ranges from 40% to 60%. In recent years, the morbidity and mortality of CRC have risen in the Chinese population. CRC is a complicated process, beginning as a benign adenomatous polyp that develops into an advanced adenoma with high-grade dysplasia and finally progresses to malignant cancer.<sup>2</sup> While advancement in diagnostic techniques and treatment strategies, including surgery, radio-, and chemotherapy, have led to earlier detection and increased survival, treatment decisions are still made almost exclusively based on the cancer's clinicopathological stage at diagnosis. Therefore, the search for new bio-markers to facilitate early diagnosis and individualized treatment is particularly warranted. It is urgent to search for specific, sensitive biomarkers to prevent the

development of colorectal adenomas that are the precursors of invasive CRCs and to predict prognosis.

Human leucine-rich  $\alpha$ -2-glycoprotein-1 (LRG1) is a plasma glycoprotein of 312 amino acids in length and having a predicted unmodified molecular weight of 34–36 kD.<sup>3</sup> The normal plasma concentration of LRG1 is about 21–50  $\mu$ g/mL.<sup>4</sup> Although many research have indicated its role in cell adhesion,<sup>5</sup> granulocytic differentiation,<sup>6</sup> and cell migration,<sup>7</sup> the function of LRG1 is awaiting to be elucidated. Besides, LRG1 is involved in transforming growth factor beta receptor (TGF- $\beta$ R) II pathway signaling<sup>8</sup> and is proposed to play a role in cell survival and apoptosis.<sup>4</sup> Recently, Choi et al performed comparative proteomic analysis of adenomatous polyps and CRC plasma proteins using a combination of two-dimensional gel electrophoresis (2DE) and mass spectrometry (MS).<sup>9</sup> But the number of included patients was relatively small and no healthy controls were studied. In this study, to further detect the role of LRG1 in CRC, we investigated the expression of LRG1 in a larger number of patients with CRC, adenomatous polyps and in healthy controls, and we studied the role of LRG1 in prognosis of CRC. Besides, the effect of LRG1 on CRC cells is studied.

## Materials and methods

### Plasma and tissue samples

Data of 240 patients with pathology-proven CRC, diagnosed between January 2008 and September 2013 in the 2nd Affiliated Hospital of Harbin Medical University, were collected upon presentation and during follow-up. Related data of 108 colorectal pathology-proven adenomatous polyp patients and 110 healthy controls were also collected.

Plasma of patients with CRC or benign adenomatous polyps were obtained from peripheral blood on the day of surgery or colonoscopy. Plasma from 110 healthy subjects, matched for gender and age, were used as normal controls. All plasma were stored at  $-70^{\circ}\text{C}$  until use. Two hundred and forty primary tumor samples and their corresponding, non-tumorous tissues were obtained from colon cancer patients immediately after resection during surgery. All tissues were snap frozen in liquid nitrogen within 30 min of resection and stored in the vapor phase of liquid nitrogen. Written informed consent was obtained for blood and tissue sampling from each patient. The research was in compliance with the Declaration of Helsinki. The design of this work was approved by the ethical committees of the 2nd Affiliated Hospital of Harbin Medical University.

### Cell culture

The human HCT116 or SW620 colon cancer cells were obtained from the American Type Culture Collection bank and maintained

in Roswell Park Memorial Institute 1640 or L15 medium (GIBCO Laboratories, Grand Island, NY, USA) that was supplemented with 10% fetal bovine serum, 100 U/mL penicillin G, and 100  $\mu$ g/mL streptomycin (GIBCO Laboratories) at  $37^{\circ}\text{C}$  in a humidified incubator containing 5%  $\text{CO}_2$ . In our experiments, the Olympus microscope (Olympus, Shanghai, China) was used.

## Clinical evaluation and laboratory assessment

The following clinical data were collected and analyzed: gender, age, plasma carcinoembryonic antigen (CEA), CA19-9 and neutrophil ratio. Data of tumor, node, metastasis (TNM) staging, tumor size, and tumor pathological types were from the department of pathology in the 2nd Affiliated Hospital of Harbin Medical University. The patients were followed up in our outpatient clinic specified for CRC and the primary end point was defined as death.

## Enzyme-linked immunosorbent assay (ELISA)

The abundances of plasma LRG1 proteins were confirmed by ELISA. Commercial kits purchased from Uscon Life Science Inc. (Wuhan, China) were used for determination of LRG1 measurements and analysis was performed according to the manufacturer's instructions.<sup>9</sup> The quality control information is shown in [http://www.cloud-clone.com/manual/ELISA-Kit-for-Leucine-Rich-Alpha-2-Glycoprotein-1-\(LRG1\)-SEB934Hu.pdf](http://www.cloud-clone.com/manual/ELISA-Kit-for-Leucine-Rich-Alpha-2-Glycoprotein-1-(LRG1)-SEB934Hu.pdf).

## Quantitative real-time polymerase chain reaction (qRT-PCR)

Total RNA was extracted from tissues with TRIzol reagents (Invitrogen, Carlsbad, CA, USA) according to the manufacturer's protocol.<sup>10</sup> Thereafter, 1  $\mu$ g of RNA from each sample was reverse transcribed into complementary DNA (cDNA) using random primers with PCR machine (Thermo Fisher Scientific, Waltham, USA), and the cDNA was subjected to qRT-PCR for LRG1. RT-PCR was performed with the SYBR green Premix Ex TaqII (Takara, Dalian, China) with Applied Bio-systems Step One Plus RT-PCR system (Applied Bio-systems, Carlsbad, CA, USA). Actin was used as the endogenous control for detection of LRG1 mRNA expression. Relative quantification analysis was performed using the comparative CT ( $2^{-\Delta\Delta\text{CT}}$ ) method. Primer information used in the study are as follows: LRG1: forward: 5'-ACCCCGTTTCATCCATCCAT-3'; reverse: 5'-CTCAGCTGGAAGGAAGGACA-3' (Sangon Biotech, Shanghai, China). Actin: forward: 5'TACCTCATGAAGATCCTCACC3'; reverse: 5'TTTCGTGGATGCCACAGGAC-3' (Sangon Biotech).

## Oligonucleotide synthesis and transfection

The LRG1 siRNA was synthesized by the Gene Pharma Company (Shanghai, China). siRNA sequence: 5'-GCCCGAGGGGGCAUUAACCTT-3'. SW620 or HCT116 cells were transfected with LRG1 siRNA using X-tremeGENE siRNA Transfection Reagent (Roche, Shanghai, China). LRG1 cDNA without its 3'-UTR (1,044 bp) was ligated to pcDNA3.1(+) (Invitrogen) to construct the recombinant vector pcDNA3.1(+)-LRG1. LRG1 was amplified using forward: 5'-GAGGATCCATGTCTCTTGGAGCAG-3'; reverse: 5'-CCGAATCCCTGGTCTCACTGGGAC-3' (Gene Pharma Company) as primers. The final product was ligated BamHI/EcoRI into pcDNA3.1(+). HCT116 cells were transfected with pcDNA3.1(+)-LRG1 or empty vector using Lipofectamine 2000 transfection reagent (Invitrogen) according to the manufacturer's instructions.

## Stable transfection of pcDNA3.1(+)-LRG1

HCT116 cells were seeded at a density of  $3 \times 10^5$  cells in a 60 mm plate and grown to 60% confluency in growth media. The cells were transfected with pcDNA3.1(+)-LRG1 using the Lipofectamine 2000 transfection reagent (Invitrogen). Stable cell lines were selected with 900  $\mu\text{g/mL}$  G418 (Sigma, Shanghai, China), and positive clones were identified by western blot.

## Transwell assay

To examine the migratory ability of cells *in vitro*, transwell chamber assay was used. A total of  $2 \times 10^5$  HCT116 cells were placed in the upper compartment of a 24-well transwell unit with 8  $\mu\text{m}$  polycarbonate nucleopore filters (Corning Costar, Cambridge, MA, USA). For the invasion assay,  $2 \times 10^5$  cells were plated in the top chamber with a Matrigel-coated membrane (24-well insert, 8  $\mu\text{m}$  pore size; BD Biosciences, Franklin Lakes, NJ, USA). Cells were plated in the medium without serum, and the medium supplemented with 10% serum was used as a chemoattractant in the lower chamber. The cells were incubated for 24–36 h. Cells that did not invade through the pores, were removed by a cotton swab. Filters were fixed with 90% ethanol, stained with 0.1% crystal violet (Beyotime Institute of Biotechnology, Shanghai, China), and photographed. Cell numbers were counted.

## MTT assay

Cell viability was determined using a MTT (Beyotime Institute of Biotechnology) assay. One thousand HCT116

cells or stable transfection cell lines were seeded in 96-well culture plates in culture medium. After 24 h, the cells were transfected with LRG1 siRNA. MTT assays were performed 24, 48, and 72 h after treatment. At the time of the assay, the cells were stained with 20  $\mu\text{L}$  MTT (5 mg/mL) (Sigma) at 37°C for 4 h and subsequently were solved in 150  $\mu\text{L}$  dimethyl sulfoxide (Beyotime Institute of Biotechnology). Absorbance was measured at 490 nm using a microtiter plate reader (TECAN, Männedorf, Switzerland).

## Western blot analysis

After rinsing with PBS, the cells were lysed in ice for 30 min in lysis buffer (Beyotime Institute of Biotechnology) containing a cocktail protease inhibitor (Roche). After centrifuging at 12,000 g for 15 min, the supernatant was extracted and saved at  $-80^\circ\text{C}$ . Protein samples were electrophoresed on a 10% sodium dodecyl sulfate gel and transferred to polyvinylidene difluoride membrane at 300 mA for 2 h. The blots were blocked in blocking buffer (0.1% Tween-20 in PBS containing 5% non-fat dry milk, pH 7.4) for 2 h. Afterward, the membrane was incubated overnight with the corresponding antibodies in blocking buffer at 4°C: LRG1 antibody (HPA001888, rabbit polyclonal; Sigma, St Louis, MO, USA) or Actin antibody (sc-1616, goat polyclonal; Santa Cruz Biotechnology, Dallas, TX, USA). After washing with PBST thrice, the blots were incubated with secondary antibody (1:40,000) (Santa Cruz Biotechnology) in PBST for 2 h at room temperature. The blots were washed again thrice in PBST buffer and transferred proteins were detected with an enhanced chemiluminescence detection kit (Applygen, Beijing, China).

## Statistical analysis

Statistical software SPSS 20.0 (SPSS, Chicago, IL, USA) was used for statistical analysis. Quantitative data were expressed as mean  $\pm$  SD, or median with range (minimum, maximum). For comparison of clinical and pathological features of patients, the Student's *t*-test, one-way analysis of variance, and non-parametric test were used. Kaplan–Meier curves were used to analyze the patients' prognosis. Survival analysis was performed using the log-rank test. Results were expressed as hazard ratio (HR) with 95% confidence intervals. Statistical significance was considered as  $P < 0.05$ .

## Results

### General data of patients and controls

The general data of patients with CRC are shown in Table 1. Gender and age were comparable among patients with CRC, patients with colorectal polyps and healthy controls (138/102

**Table 1** Summary of the clinicopathologic features of CRC, adenoma, and healthy controls

Basic characteristics	Healthy controls	Adenoma patients	CRC patients	P-value
No. of patients	110	108	240	
Male/female	65/45	66/42	138/102	0.815
Age (years; median [range])	57.5 (39–85)	59 (39–86)	60 (38–85)	0.409

**Abbreviation:** CRC, colorectal cancer.

vs 66/42 vs 65/45,  $P=0.815$ ;  $60.0\pm 10.4$  vs  $58.9\pm 10.7$  vs  $58.4\pm 10.7$ ,  $P=0.409$ ).

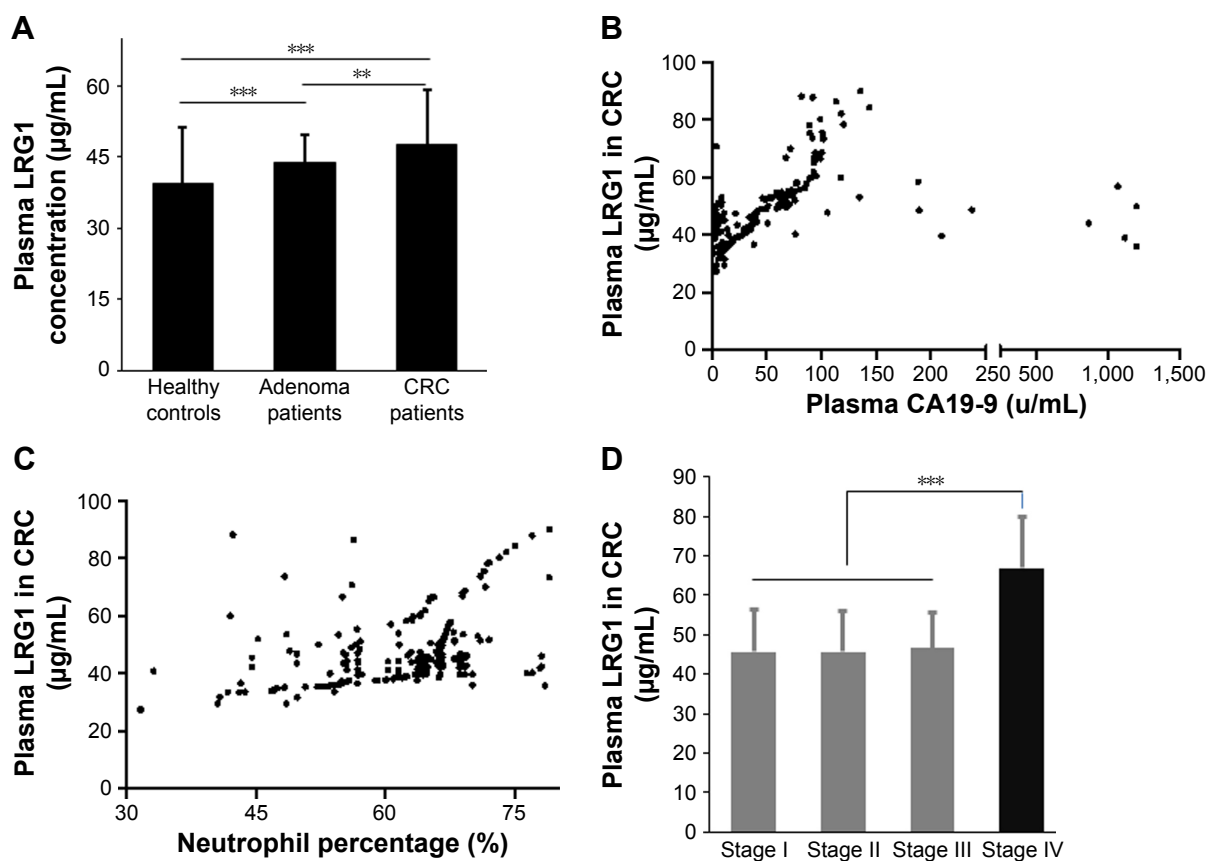
## Plasma LRG1 levels in patients and controls, and associations between plasma LRG1 levels and clinical, laboratory, and colorectal histopathological parameters in patients with colorectal cancer

The average plasma LRG1 level in CRC group was significantly higher than the polyp group ( $47.6\pm 11.7$   $\mu\text{g/mL}$  vs

$43.8\pm 6.01$   $\mu\text{g/mL}$ ,  $P=0.002$ ) and healthy controls ( $47.6\pm 11.7$   $\mu\text{g/mL}$  vs  $39.3\pm 12.1$   $\mu\text{g/mL}$ ,  $P<0.001$ ). The average plasma LRG1 level in polyp group was also higher than that in healthy controls ( $43.8\pm 6.01$   $\mu\text{g/mL}$  vs  $39.3\pm 12.1$   $\mu\text{g/mL}$ ,  $P<0.001$ ; Figure 1A).

There was no significant difference of plasma LRG1 between male and female CRC patients ( $47.6\pm 11.2$   $\mu\text{g/mL}$  vs  $47.66\pm 12.3$   $\mu\text{g/mL}$ ,  $P=0.708$ ). No significant association existed between plasma LRG1 level and age ( $r=-0.055$ ,  $P=0.396$ ). Plasma LRG1 was positively associated with CA19-9 ( $r=0.133$ ,  $P=0.039$ ; Figure 1B) and neutrophil ratio ( $r=0.403$ ,  $P<0.001$ ; Figure 1C). There was no obvious association between plasma LRG1 and CEA ( $r=-0.046$ ,  $P=0.482$ ).

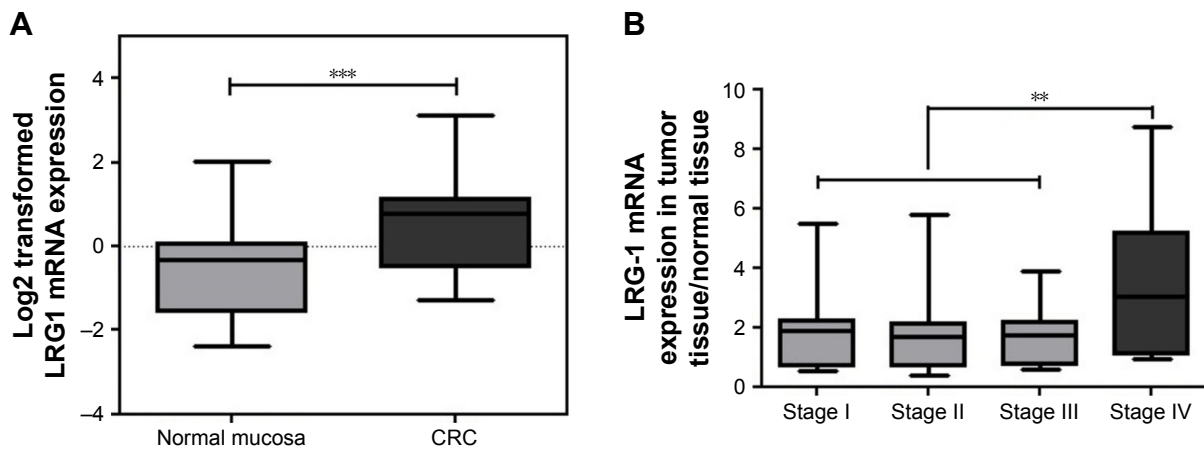
In colorectal pathological data, plasma LRG1 in different TNM stages of CRC was as follows:  $45.7\pm 10.8$   $\mu\text{g/mL}$  in stage I,  $45.7\pm 10.3$   $\mu\text{g/mL}$  in stage II,  $46.5\pm 9.0$   $\mu\text{g/mL}$  in stage III, and  $67.0\pm 12.9$   $\mu\text{g/mL}$  in stage IV. Plasma LRG1 of stage IV patients was dramatically different from that of stage I, stage II or stage III patients ( $P<0.001$ ; Figure 1D).



**Figure 1** (A) Plasma LRG1 concentrations were detected in 240 colorectal cancer patients, 108 adenomatous polyp patients, and 110 control patients.

**Notes:** Plasma levels of LRG1 were significantly higher in CRC plasma than in adenomatous polyp and control plasma. Adenomatous polyp plasma LRG1 was significantly higher than that in controls. (B) Plasma LRG1 concentrations of 240 CRC patients were detected by ELISA. LRG1 expression is positively correlated with CA19-9 ( $r=0.133$ ,  $P=0.039$ ). (C) Plasma LRG1 concentrations of 240 CRC patients were detected by ELISA. LRG1 expression is positively correlated with plasma neutrophil percentage ( $r=0.403$ ,  $P<0.001$ ). (D) Stage IV CRC has higher LRG1 expression compared with stage I, II, and III CRC.  $**P<0.01$ ,  $***P<0.001$ .

**Abbreviations:** CRC, colorectal cancer; ELISA, enzyme-linked immunosorbent assay; LRG1, leucine-rich  $\alpha$ -2-glycoprotein-I.



**Figure 2 (A)** LRG1 mRNA expression was examined by qRT-PCR in 240 human colorectal cancer tissues and their adjacent normal mucosa tissues. **Notes:** LRG1 mRNA expression was normalized to that of actin in each sample. LRG1 mRNA expression is up-regulated in CRC tissue compared with normal tissue. **(B)** LRG1 mRNA expression was examined by qRT-PCR in 240 human colon cancer tissues and their adjacent normal mucosa tissues. LRG1 mRNA expression was normalized to that of actin in each sample. LRG1 mRNA expression is up-regulated in stage IV human colorectal cancer tissues compared with the other 3 stages.  $**P<0.01$ ,  $***P<0.001$ . **Abbreviations:** CRC, colorectal cancer; LRG1, leucine-rich  $\alpha$ -2-glycoprotein-I; qRT-PCR, quantitative real-time polymerase chain reaction.

The colonic and rectal groups had almost the same plasma LRG1 ( $46.8\pm 11.9$   $\mu\text{g/mL}$  vs  $48.4\pm 11.5$   $\mu\text{g/mL}$ ,  $P=0.281$ ). Moreover, there was no significant difference of plasma LRG1 among well-differentiated tumors, moderately differentiated tumors, and poorly differentiated tumors ( $47.8\pm 10.6$   $\mu\text{g/mL}$  vs  $47.3\pm 11.5$   $\mu\text{g/mL}$  vs.  $47.1\pm 12.1$   $\mu\text{g/mL}$ ,  $P=0.747$ ). No obvious correlation between plasma LRG1 and tumor size was found either ( $r=-0.106$ ,  $P=0.103$ ).

### Tissue LRG1 mRNA expression in CRC tissues

LRG1 mRNA expression levels were about 2-fold higher in CRC compared with normal tissues ( $P<0.001$ ; Figure 2A). The expression of LRG1 mRNA in stage IV was dramatically higher than in stage I, II, and III ( $P=0.002$ ), while there was no significant difference of LRG1 levels among stage I, II and III ( $P=0.696$ ; Figure 2B). There was no significant difference of the average levels of the tissue LRG1 between colon cancer and rectal cancer ( $r=-0.006$ ,  $P=0.921$ ). Additionally, there was no significant difference of the tissue LRG1 mRNA expression among tumors having well differentiation level ( $2.0\pm 0.7$ ), moderate differentiation level ( $1.7\pm 1.1$ ), and poor differentiation level ( $2.0\pm 1.8$ ;  $P=0.412$ ). LRG1 mRNA expression was not correlated with tumor size ( $r=-0.053$ ,  $P=0.416$ ).

### Association of plasma LRG1 levels and outcome in patients with colorectal cancer

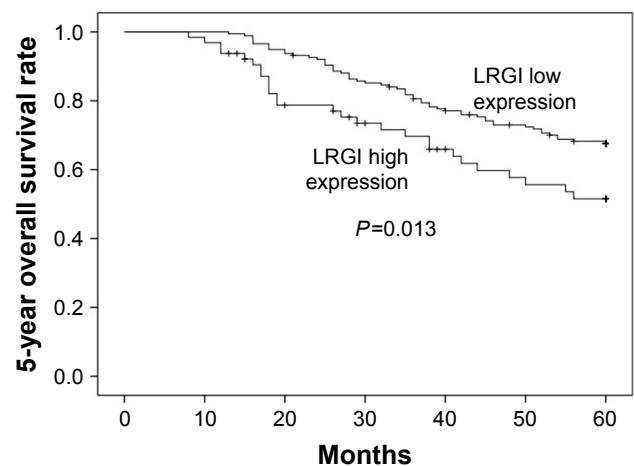
In our cohort study, patients with CRC were followed up for an average duration of 49 months (1–68 months). Level of plasma LRG1 was found to be a risk factor in CRC for

univariate survival analysis of colorectal prognosis ( $P=0.013$ ,  $\text{HR}=1.803$ , 95% CI: 1.521–2.137), and multivariate analysis showed that LRG1 was an independent risk factor ( $P<0.001$ ,  $\text{HR}=1.492$ , 95% CI: 1.223–1.820). Other univariate risk factors included age, gender, and TNM stage.

Patients were divided into 2 groups according to their plasma LRG1 level based on less or higher than average value of normal controls (mean + SD, eg, 51.4  $\mu\text{g/mL}$ ). The patients with higher plasma LRG1 value presented with poorer outcome ( $P=0.013$ , Figure 3).

### LRG1 promotes the migratory and growth ability of cells

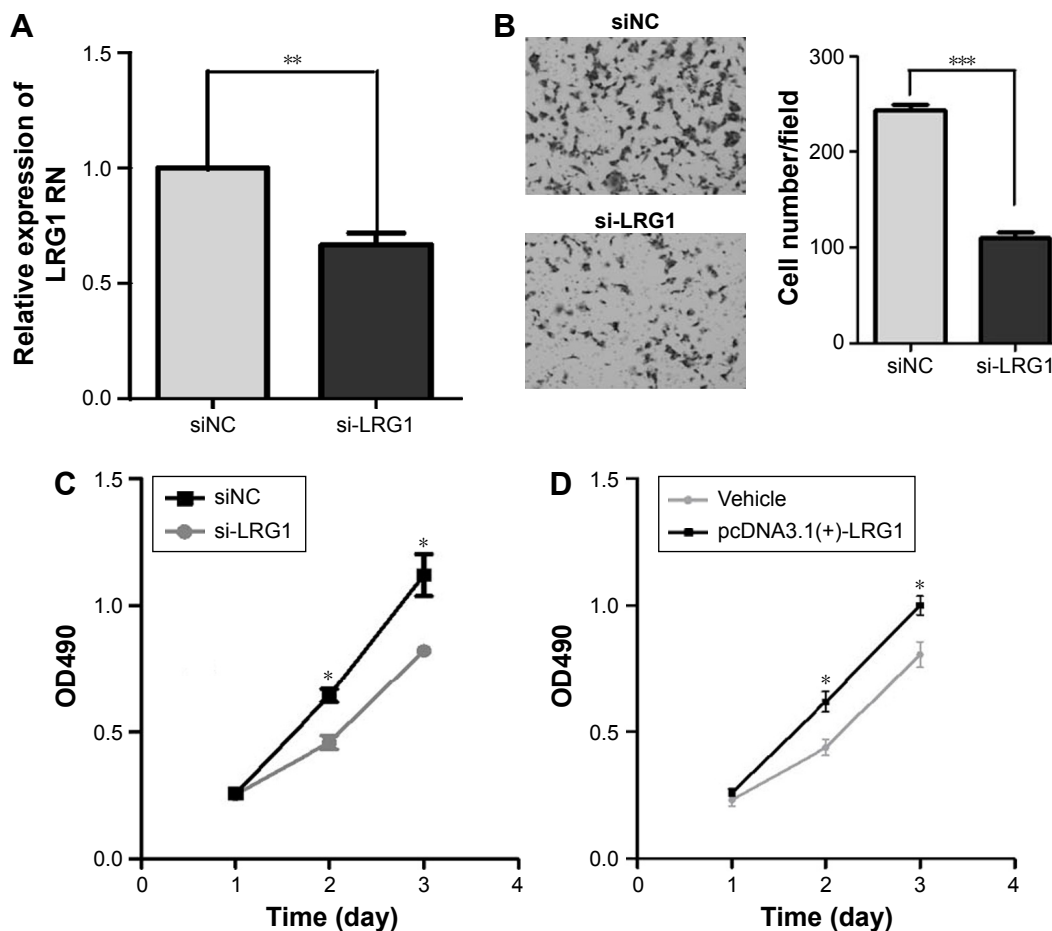
To uncover the functions of LRG1 in human colon cancer, we observed the effect of LRG1 on the migratory ability of colon



**Figure 3** Survival analysis showed patients with higher LRG1 expression had shorter survival time compared with patients having lower LRG1 expression.

**Note:**  $P=0.013$ .

**Abbreviation:** LRG1, leucine-rich  $\alpha$ -2-glycoprotein-I.



**Figure 4** LRG1 promotes the migratory and growth abilities in HCT116 cells.

**Notes:** (A) LRG1 expression result. (B) Transwell invasion assays were performed. (C, D) MTT assays showed LRG1 could promote growth ability in HCT116 or SW620 cells. \* $P < 0.05$ , \*\* $P < 0.01$ , \*\*\* $P < 0.001$ , vs control.

**Abbreviations:** LRG1, leucine-rich  $\alpha$ -2-glycoprotein-1; NC, negative control.

cancer cells. We altered the expression of LRG1 through transient transfection of HCT116 cells with a LRG1 siRNA (Figure 4A) or stable transfection with pcDNA3.1(+)-LRG1 plasmid. A transwell invasion assay showed that silencing LRG1 could significantly suppress the migratory ability of HCT116 cells (Figure 4B). MTT assays indicated silencing of LRG1 could inhibit and overexpression of LRG1 could promote the growth ability of HCT116 or SW620 cells (Figure 4C and D). These results suggest that LRG1 could promote the migratory and growth ability of cells.

## Discussion

LRG1 was found to be expressed at the lowest level in healthy controls, and at a higher level in CRC patients, as measured by ELISA. qRT-PCR results consistently showed that LRG1 mRNA was higher in CRC tissues compared with corresponding normal tissue, and stage IV CRC tissues have the highest LRG1 mRNA expression among all stages.

Therefore, tissue LRG1 may contribute to the upregulation of LRG1 in plasma.

Although LRG1 is deregulated in many diseases, the biological functions and the site of origin of LRG are still obscure. Our results have shown here LRG1 may promote the migratory, invasive, and proliferative ability of colon cancer, and thus act as an oncogene. LRG1 maybe promoting invasion ability through TGF $\beta$ -1.<sup>11</sup> Also, LRG1 has an effect on cell growth as indicated by MTT assay. Part of this phenomenon is likely due to LRG1 playing a role in anti-apoptosis. Jemmerson et al found that MCF-7 breast cancer cells transfected with LRG1 are more resistant to apoptosis induction than non-transfected cells due to cytoplasmic LRG1 binding cytochrome c and inhibition of Apaf-1 activation.<sup>12</sup>

Recently, Choi et al performed a comparative proteomic analysis of adenomatous polyps and CRC plasma proteins using a combination of 2DE and MS.<sup>9</sup> They discovered that LRG1 was about 1.5-fold higher in CRC group than

adenoma group. In addition, a panel consisting of CEA, MAPRE1, IGFBP2, and LRG1 is increased in prediagnostic CRC plasmas.<sup>13</sup> We get consistent results with them. Additionally, serum LRG1 concentrations are significantly elevated in active ulcerative colitis patients compared with patients in remission and healthy controls.<sup>14</sup> Considering that inflammatory bowel disease (ulcerative colitis and Crohn's disease) accounts for roughly two-thirds of the incidence of CRC,<sup>15,16</sup> LRG1 may promote the transformation of ulcerative colitis to CRC.

LRG1 was initially defined as an "acute-phase protein" involved in systemic response to bacterial and viral infection,<sup>17</sup> but has since been found elevated in a variety of diseases, both malignant and benign.<sup>4</sup> LRG1 is also up-regulated in serum of patients with biliary tract cancer compared with benign disease and healthy controls.<sup>18</sup> The expression of LRG1 in ovarian cancer tissues and cell lines, examined by gene microarray, RT-PCR, western blot, immunocytochemistry, MS and ELISA assay, is upregulated.<sup>12</sup> Differential expression techniques employing affinity depletion of high abundance proteins and 2D electrophoresis have found serum LRG1 to be upregulated in lung cancer, pancreatic cancer, and bladder cancer.<sup>19–22</sup> LRG1 is also dysregulated in some immune disorders. It is reported that iTRAQ (isobaric tags for relative and absolute quantitation) quantitative proteomic analysis and ELISA found that LRG1 is elevated in rheumatoid arthritis patients.<sup>23</sup> Our results demonstrate that there is a significant difference of LRG1 expression between healthy and stage I/II/and III CRCs, indicating a progressive increase of LRG1 in tissues as normal tissue changes to CRC tissue.

The hallmarks of cancer are self-sufficiency in growth signals, evading apoptosis, insensitivity to anti-growth signals, sustained angiogenesis, tissue invasion and metastasis, and limitless replicative potential.<sup>24</sup> The formation of new blood vessels by angiogenesis is a key feature of cancer. In one of the latest studies about LRG1, researchers found that in the presence of TGF- $\beta$ , LRG1 is mitogenic to endothelial cells and promotes angiogenesis.<sup>11</sup> In our results, plasma LRG1 positively correlated with neutrophils. LRG1 is released from neutrophils and polymorphonuclear leukocytes, majority of which promote carcinogenesis during chronic inflammatory bowel diseases like colitis.<sup>25</sup> Neutrophil infiltration is a key event in chronic intestinal inflammation and associated CRC. Using a mouse model of colitis-associated cancer (CAC), Wang et al have demonstrated that infiltrated neutrophils produce large amounts of interleukin 1b that is critical for the development of CAC.<sup>26</sup> Together, LRG1 may

play an important role during the development of colitis to CRC. Previous studies indicate that LRG1 may be an anti-apoptotic factor, allowing survival of cells in response to stress signals.<sup>27</sup> Thus LRG1 can promote the growth of tumors by inhibiting cell apoptosis. In addition, transformed granulocytic cells transfected with LRG1 were reported by Ai et al to be more viable than non-transfected cells when transferred between different media.<sup>28</sup> In our study, stage IV CRC had higher levels of LRG1 compared with stage I, II, and III CRC, which indicates that LRG1 can promote the migration of CRC. However, besides migration, there are other equally plausible, cell-intrinsic and/or extrinsic biological pathways to support tumor growth-angiogenesis, suppression of apoptosis, paracrine regulation, suppression of immunity, etc. We need further studies to evaluate the role of LRG1 in CRC.

As the mortality of CRC is high, it is very important to detect CRC early. However, distinguishing malignant disease from benign disease prior to surgery, and determining which patients would benefit from surgery will have a greater impact. As an adenomatous polyposis coli-interacting protein, increased plasma levels of LRG1 along with MAPRE1 and IGFBP2 preceded a diagnosis of CRC in females.<sup>13</sup> In our study, LRG1 has different expression among healthy controls, colorectal adenomatous polyps, and CRC. Moreover, LRG1 is positively correlated with CA19-9, indicating its role as a biomarker for detecting CRC.

Recent study shows that the expression of LRG1, along with serum amyloid A and C4-binding protein, could refine the prognosis of resected squamous cell lung cancer. In the present study, we evaluated the relationship of plasma LRG1 with prognosis in CRC and found that patients with higher LRG1 expression had shorter survival time compared with patients with lower LRG1 expression. Multivariate factors analysis showed that LRG1 is an independent risk factor of prognosis.

## Acknowledgments

The study was supported by the National Natural Science Fund of China for Young (81702867), Heilongjiang Natural Science Fund of China for Young (QC2017095), and the Fundamental Research Funds for the Provincial Universities (2017LCZX66).

## Disclosure

The authors report no conflicts of interest in this work.

## References

1. Siegel RL, Miller KD, Jemal A. Cancer statistics, 2017. *CA Cancer J Clin.* 2017;67:7–30.

2. Markowitz SD, Bertagnolli MM. Molecular origins of cancer: molecular basis of colorectal cancer. *N Eng J Med*. 2009;361:2449–2460.
3. Schwick HG, Haupt H. Purified human plasma proteins of unknown function. *Jpn J Med Sci Biol*. 1981;34:299–327.
4. Weivoda S, Andersen JD, Skogen A, et al. Elisa for human serum leucine-rich alpha-2-glycoprotein-1 employing cytochrome c as the capturing ligand. *J Immunol Methods*. 2008;336:22–29.
5. Kobe B, Kajava AV. The leucine-rich repeat as a protein recognition motif. *Curr Opin Struct Biol*. 2001;11:725–732.
6. O'Donnell LC, Druhan LJ, Avalos BR. Molecular characterization and expression analysis of leucine-rich alpha-2-glycoprotein, a novel marker of granulocytic differentiation. *J Leukoc Biol*. 2002;72:478–485.
7. Saito K, Tanaka T, Kanda H, et al. Gene expression profiling of mucosal addressin cell adhesion molecule-1+ high endothelial venule cells (hev) and identification of a leucine-rich hev glycoprotein as a hev marker. *J Immunol*. 2002;168:1050–1059.
8. Sun D, Kar S, Carr BI. Differentially expressed genes in tgf-beta 1 sensitive and resistant human hepatoma cells. *Cancer Lett*. 1995;89:73–79.
9. Choi JW, Liu H, Shin DH, et al. Proteomic and cytokine plasma biomarkers for predicting progression from colorectal adenoma to carcinoma in human patients. *Proteomics*. 2013;13:2361–2374.
10. Li Q, Zou C, Zou C, et al. MicroRNA-25 functions as a potential tumor suppressor in colon cancer by targeting smad7. *Cancer Lett*. 2013;335:168–174.
11. Wang X, Abraham S, McKenzie JA, et al. Lrg1 promotes angiogenesis by modulating endothelial tgf-beta signalling. *Nature*. 2013;499:306–311.
12. Andersen JD, Boylan KL, Jemmerson R, et al. Leucine-rich alpha-2-glycoprotein-1 is upregulated in sera and tumors of ovarian cancer patients. *J Ovarian Res*. 2010;3:21.
13. Ladd JJ, Busald T, Johnson MM, et al. Increased plasma levels of the apc-interacting protein mapre1, lrg1, and igfbp2 preceding a diagnosis of colorectal cancer in women. *Cancer Prev Res*. 2012;5:655–664.
14. Serada S, Fujimoto M, Terabe F, et al. Serum leucine-rich alpha-2 glycoprotein is a disease activity biomarker in ulcerative colitis. *Inflamm Bowel Dis*. 2012;18:2169–2179.
15. von Roon AC, Reese G, Teare J, Constantinides V, Darzi AW, Tekkis PP. The risk of cancer in patients with crohn's disease. *Dis Colon Rectum*. 2007;50:839–855.
16. Eaden JA, Abrams KR, Mayberry JF. The risk of colorectal cancer in ulcerative colitis: a meta-analysis. *Gut*. 2001;48:526–535.
17. Bini L, Magi B, Marzocchi B, et al. Two-dimensional electrophoretic patterns of acute-phase human serum proteins in the course of bacterial and viral diseases. *Electrophoresis*. 1996;17:612–616.
18. Sandanayake NS, Sinclair J, Andreola F, et al. A combination of serum leucine-rich alpha-2-glycoprotein 1, ca19-9 and interleukin-6 differentiate biliary tract cancer from benign biliary strictures. *Br J Cancer*. 2011;105:1370–1378.
19. Okano T, Kondo T, Kakisaka T, et al. Plasma proteomics of lung cancer by a linkage of multi-dimensional liquid chromatography and two-dimensional difference gel electrophoresis. *Proteomics*. 2006;6:3938–3948.
20. Kakisaka T, Kondo T, Okano T, et al. Plasma proteomics of pancreatic cancer patients by multi-dimensional liquid chromatography and two-dimensional difference gel electrophoresis (2d-dige): up-regulation of leucine-rich alpha-2-glycoprotein in pancreatic cancer. *J Chromatogr B Analyt Technol Biomed Life Sci*. 2007;852:257–267.
21. Yu KH, Rustgi AK, Blair IA. Characterization of proteins in human pancreatic cancer serum using differential gel electrophoresis and tandem mass spectrometry. *J Proteome Res*. 2005;4:1742–1751.
22. Linden M, Lind SB, Mayrhofer C, et al. Proteomic analysis of urinary biomarker candidates for nonmuscle invasive bladder cancer. *Proteomics*. 2012;12:135–144.
23. Serada S, Fujimoto M, Ogata A, et al. Itraq-based proteomic identification of leucine-rich alpha-2 glycoprotein as a novel inflammatory biomarker in autoimmune diseases. *Ann Rheum Dis*. 2010;69:770–774.
24. Hanahan D, Weinberg RA. The hallmarks of cancer. *Cell*. 2000;100:57–70.
25. Hofman PM. Pathobiology of the neutrophil-intestinal epithelial cell interaction: role in carcinogenesis. *World J Gastroenterol*. 2010;16:5790–5800.
26. Wang Y, Wang K, Han GC, et al. Neutrophil infiltration favors colitis-associated tumorigenesis by activating the interleukin-1 (il-1)/il-6 axis. *Mucosal Immunol*. 2014;7(5):1106–1115.
27. Shirai R, Gotou R, Hirano F, Ikeda K, Inoue S. Autologous extracellular cytochrome c is an endogenous ligand for leucine-rich alpha2-glycoprotein and beta-type phospholipase a2 inhibitor. *J Biol Chem*. 2010;285:21607–21614.
28. Ai J, Druhan LJ, Hunter MG, Loveland MJ, Avalos BR. Lrg-accelerated differentiation defines unique g-csfr signaling pathways downstream of pu.1 and c/ebpepsilon that modulate neutrophil activation. *J Leukoc Biol*. 2008;83:1277–1285.

## OncoTargets and Therapy

### Publish your work in this journal

OncoTargets and Therapy is an international, peer-reviewed, open access journal focusing on the pathological basis of all cancers, potential targets for therapy and treatment protocols employed to improve the management of cancer patients. The journal also focuses on the impact of management programs and new therapeutic agents and protocols on

Submit your manuscript here: <http://www.dovepress.com/oncotargets-and-therapy-journal>

Dovepress

patient perspectives such as quality of life, adherence and satisfaction. The manuscript management system is completely online and includes a very quick and fair peer-review system, which is all easy to use. Visit <http://www.dovepress.com/testimonials.php> to read real quotes from published authors.