

2-Amino-N-(2-hydroxy-3-methoxybenzylidene)aniline

Mohammed H. Al-Douh,^a Shafida A. Hamid,^{a‡} Hasnah Osman,^a Reza Kia^b and Hoong-Kun Fun^{b*}

^aSchool of Chemical Sciences, Universiti Sains Malaysia, 11800 USM, Penang, Malaysia, and ^bX-ray Crystallography Unit, School of Physics, Universiti Sains Malaysia, 11800 USM, Penang, Malaysia

Correspondence e-mail: hkfun@usm.my

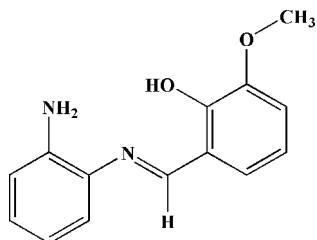
Received 24 May 2008; accepted 29 May 2008

Key indicators: single-crystal X-ray study; $T = 100$ K; mean $\sigma(\text{C}-\text{C}) = 0.003$ Å; R factor = 0.073; wR factor = 0.206; data-to-parameter ratio = 17.5.

In the title compound, $\text{C}_{14}\text{H}_{14}\text{N}_2\text{O}_2$, the dihedral angle between the two benzene rings is 9.67 (10)°. Two intramolecular $\text{O}-\text{H}\cdots\text{N}$ and $\text{N}-\text{H}\cdots\text{N}$ hydrogen bonds involving the hydroxy and amino groups generate $S(6)$ and $S(5)$ ring motifs, respectively. In the crystal structure, $\text{N}-\text{H}\cdots\text{O}$ hydrogen bonds link neighboring molecules. Molecules are also stacked in a head-to-tail fashion along the c axis through $\pi-\pi$ interactions [centroid-centroid separation of 3.7357 (12) Å] and are further linked by weak intermolecular $\text{C}-\text{H}\cdots\pi$ interactions, giving a zigzag arrangement along the b axis.

Related literature

For related literature on hydrogen bond motifs, see: Bernstein *et al.* (1995). For values of bond lengths, see: Allen *et al.* (1987). For the biological activity of imines, see, for example: Singh & Dash (1988); More *et al.* (2001); Baseer *et al.* (2000); El-Masry *et al.* (2000); Kabeer *et al.* (2001); Kuz'min *et al.* (2000); Desai *et al.* (2001). For related structures, see, for example: Corden *et al.* (1996); Govindasamy *et al.* (1999). For synthesis, see: Al-Douh *et al.* (2006, 2007). For related literature, see: Berger (2001); Elerman & Kabak (1997); Latif *et al.* (1983); Liu *et al.* (2006); Shah *et al.* (2008).



‡ Additional correspondence author, e-mail: shafida@usm.my.

Experimental

Crystal data

$\text{C}_{14}\text{H}_{14}\text{N}_2\text{O}_2$
 $M_r = 242.27$
 Monoclinic, $P2_1/c$
 $a = 13.2790$ (6) Å
 $b = 14.4810$ (6) Å
 $c = 6.1928$ (3) Å
 $\beta = 103.116$ (3)°
 $V = 1159.77$ (9) Å³
 $Z = 4$
 Mo $K\alpha$ radiation
 $\mu = 0.09$ mm⁻¹
 $T = 100.0$ (1) K
 $0.45 \times 0.15 \times 0.05$ mm

Data collection

Bruker SMART APEXII CCD
 area-detector diffractometer
 Absorption correction: multi-scan
 (SADABS; Bruker, 2005)
 $T_{\min} = 0.959$, $T_{\max} = 0.996$
 19968 measured reflections
 3402 independent reflections
 2532 reflections with $I > 2\sigma(I)$
 $R_{\text{int}} = 0.052$

Refinement

$R[F^2 > 2\sigma(F^2)] = 0.072$
 $wR(F^2) = 0.206$
 $S = 1.06$
 3402 reflections
 194 parameters
 H atoms treated by a mixture of independent and constrained refinement
 $\Delta\rho_{\text{max}} = 0.66$ e Å⁻³
 $\Delta\rho_{\text{min}} = -0.31$ e Å⁻³

Table 1

Hydrogen-bond geometry (Å, °).

Cg1 and Cg2 are centroids of the C1–C6 and C8–C13 rings, respectively.

| $D-H\cdots A$ | $D-H$ | $H\cdots A$ | $D\cdots A$ | $D-H\cdots A$ |
|---|----------|-------------|-------------|---------------|
| $\text{O1}-\text{H1O1}\cdots\text{N1}$ | 0.88 | 1.77 | 2.602 (2) | 158 |
| $\text{N2}-\text{H1N2}\cdots\text{O1}^i$ | 0.93 (3) | 2.56 (3) | 3.030 (3) | 111 (2) |
| $\text{N2}-\text{H1N2}\cdots\text{O2}^i$ | 0.93 (3) | 2.29 (3) | 3.181 (3) | 161 (3) |
| $\text{N2}-\text{H2N2}\cdots\text{N1}$ | 0.87 (3) | 2.23 (3) | 2.759 (3) | 119 (2) |
| $\text{C3}-\text{H3}\cdots\text{Cg1}^{ii}$ | 0.94 (3) | 2.64 (3) | 3.458 (2) | 145 (2) |
| $\text{C11}-\text{H11}\cdots\text{Cg2}^{iii}$ | 0.91 (3) | 2.87 (3) | 3.538 (2) | 142 (2) |

Symmetry codes: (i) $-x, -y + 2, -z$; (ii) $x, -y + \frac{1}{2}, z - \frac{3}{2}$; (iii) $x, -y + \frac{3}{2}, z - \frac{1}{2}$.

Data collection: APEX2 (Bruker, 2005); cell refinement: APEX2; data reduction: SAINT (Bruker, 2005); program(s) used to solve structure: SHELXTL (Sheldrick, 2008); program(s) used to refine structure: SHELXTL; molecular graphics: SHELXTL; software used to prepare material for publication: SHELXTL and PLATON (Spek, 2003).

The authors thank the Malaysian Government and Universiti Sains Malaysia (USM) for an IRPA short-term grant (No. 304/PKIMIA/638007) to conduct this work. MHA thanks the Yemen Government and Hadhramout University of Science and Technology (HUST) for financial scholarship support. HKF and RK thank the Malaysian Government and Universiti Sains Malaysia for Science Fund grant No. 305/PFIZIK/613312. RK thanks Universiti Sains Malaysia for a post-doctoral research fellowship.

Supplementary data and figures for this paper are available from the IUCr electronic archives (Reference: SJ2510).

References

- Al-Douh, M. H., Hamid, S. A., Osman, H., Ng, S.-L. & Fun, H.-K. (2006). *Acta Cryst.* **E62**, o3954–o3956.
 Al-Douh, M. H., Hamid, S. A., Osman, H., Ng, S.-L. & Fun, H.-K. (2007). *Acta Cryst.* **E63**, o3570–o3571.
 Allen, F. H., Kennard, O., Watson, D. G., Brammer, L., Orpen, A. G. & Taylor, R. (1987). *J. Chem. Soc. Perkin Trans. 2*, pp. S1–19.

- Baseer, M. A., Jadhav, V. D., Phule, R. M., Archana, Y. V. & Vibhute, Y. B. (2000). *Orient. J. Chem.* **16**, 553–556.
- Berger, J. M. (2001). PhD Thesis. Virginia Polytechnic Institute and State University, USA.
- Bernstein, J., Davis, R. E., Shimoni, L. & Chang, N.-L. (1995). *Angew. Chem. Int. Ed. Engl.* **34**, 1555–1573.
- Bruker (2005). *APEX2, SAINT and SADABS*. Bruker AXS Inc., Madison, Wisconsin, USA.
- Corden, J. P., Bishop, P. R., Errington, W. & Wallbridge, M. G. H. (1996). *Acta Cryst.* **C52**, 2777–2779.
- Desai, S. B., Desai, P. B. & Desai, K. R. (2001). *Heterocycl. Commun.* **7**, 83–90.
- Elerman, Y. & Kabak, M. (1997). *Acta Cryst.* **C53**, 372–374.
- El-Masry, A. H., Fahmy, H. H. & Abdelwahed, S. H. A. (2000). *Molecules*, **5**, 1429–1438.
- Govindasamy, L., Velmurugan, D. & Rajendran, T. M. (1999). *Acta Cryst.* **C55**, 1368–1369.
- Kabeer, A. S., Baseer, M. A. & Mote, N. A. (2001). *Asian J. Chem.* **13**, 496–500.
- Kuz'min, V. E., Lozitsky, V. P., Kamalov, G. L., Lozitskaya, R. N., Zheltvay, A. I., Fedtchouk, A. S. & Kryzhanovsky, D. N. (2000). *Acta Biochim. Pol.* **47**, 867–876.
- Latif, N., Mishriky, N. & Assad, F. M. (1983). *Recl J. R. Neth. Chem. Soc.* **102**, 73–77.
- Liu, Y.-F., Xia, H.-T., Yang, S.-P. & Wang, D.-Q. (2006). *Acta Cryst.* **E62**, o5908–o5909.
- More, P. G., Bhalvankar, R. B. & Pattar, S. C. (2001). *J. Indian Chem. Soc.* **78**, 474–475.
- Shah, A. M., Helal, M. H. S., Al-Douh, M. H., Hamid, S. A. & Osman, H. (2008). *Proceedings of the 22nd Scientific Meeting of the Malaysian Society of Pharmacology and Physiology*, April 5–6, Kuala Lumpur, Malaysia, Poster 58.
- Sheldrick, G. M. (2008). *Acta Cryst.* **A64**, 112–122.
- Singh, W. M. & Dash, B. C. (1988). *Pesticides*, **22**, 33–37.
- Spek, A. L. (2003). *J. Appl. Cryst.* **36**, 7–13.

supplementary materials

Acta Cryst. (2008). E64, o1201-o1202 [doi:10.1107/S1600536808016292]

2-Amino-*N*-(2-hydroxy-3-methoxybenzylidene)aniline

M. H. Al-Douh, S. A. Hamid, H. Osman, R. Kia and H.-K. Fun

Comment

Imines are an important class of compounds and rank among the most versatile synthetic organic intermediates, which are important for the synthesis of biologically important compounds (Singh & Dash, 1988; More *et al.*, 2001; Baseer *et al.*, 2000; El-Masry *et al.*, 2000; Kabeer *et al.*, 2001; Kuz'min *et al.*, 2000; Desai *et al.*, 2001). Berger (2001) evaluated some *bis*-Schiff bases using 1138 and Sc-7 yeast assays, and a A2780 cytotoxicity test. They showed significant activity in a single dose test. The reactions of some phenolic aldehydes with *o*-phenylenediamine have been examined in some detail including the isolation of the title compound (Latif *et al.*, 1983). Our group has been actively involved in synthesizing *bis*-Schiff bases and investigating their DNA binding ability using spectroscopic techniques employing calf thymus DNA (Shah *et al.*, 2008). We have also obtained single crystals of benzimidazole and the *bis*-Schiff base derived from the title compound (I) and their structures are consistent with those reported earlier (Elerman & Kabak, 1997; Liu *et al.*, 2006). However, the crystal structure of compound (I) was never reported and we present its structure here (Fig. 1).

The C1–C6 benzene ring is not coplanar with the phenylenediamine and makes a dihedral angle of 9.67 (10)° with C8–C13 benzene ring. Two intramolecular O1—H1O1···N1 and N2—H2N2···N1 hydrogen bonds generate S(6) and S(5) ring motifs, respectively (Bernstein *et al.*, 1995). Bond lengths and angles in the title compound have normal values (Allen *et al.*, 1987). The crystal is stabilized by intramolecular O—H···N and N—H···N and intermolecular N—H···O hydrogen bonds. Molecules (Fig. 2) are also arranged into zig-zag chains by C—H··· π interactions along the *b*-axis (Table 1); *Cg1* and *Cg2* are the centroids of the C1–C6 and C8–C13 phenyl rings, respectively. In the crystal packing (Fig. 3), molecules are stacked along the *c* axis by π ··· π interactions with *Cg1*···*Cg2* = 3.7357 (12) Å; symmetry codes *x*, *y*, $-1 + z$ and *x*, *y*, $1 + z$;

Experimental

The synthetic method has been described earlier (Al-Douh *et al.*, 2006, 2007). Single crystals suitable for *X*-ray diffraction were obtained by evaporation of a *n*-hexane solution at room temperature.

Refinement

The H-atom attached to O1 is located from the difference Fourier map and refined as riding with the parent atom with an isotropic thermal parameter 1.2 times that of the parent atom. The methyl hydrogen atoms were fixed geometrically and refined using a rotating model with isotropic thermal parameters 1.5 that of the parent atom. The remaining hydrogen atoms were located in a difference map and refined freely with their isotropic thermal parameters 1.2 times those of the parent atoms. The highest peak is located 0.96 Å from H2. The deepest hole is located 0.41 Å from H1O1.

Figures

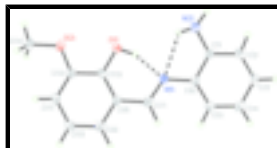


Fig. 1. The molecular structure of the title compound, showing 50% probability displacement ellipsoids and the atomic numbering. Intramolecular H bonds are drawn as dashed lines.

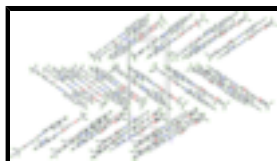


Fig. 2. The crystal packing of (I) showing the zigzag stacking arrangement along the *b* axis. H bonds are drawn as dashed lines.

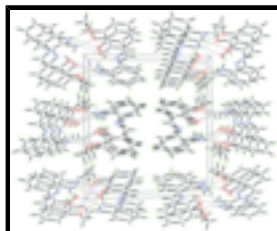


Fig. 3. The crystal packing of (I), viewed along the *c* axis showing the molecular stacking. H bonds are drawn as dashed lines.

2-Amino-*N*-(2-hydroxy-3-methoxybenzylidene)aniline

Crystal data

$C_{14}H_{14}N_2O_2$

$M_r = 242.27$

Monoclinic, $P2_1/c$

Hall symbol: -P 2ybc

$a = 13.2790$ (6) Å

$b = 14.4810$ (6) Å

$c = 6.1928$ (3) Å

$\beta = 103.116$ (3)°

$V = 1159.77$ (9) Å³

$Z = 4$

$F_{000} = 512$

$D_x = 1.388$ Mg m⁻³

Mo $K\alpha$ radiation

$\lambda = 0.71073$ Å

Cell parameters from 4220 reflections

$\theta = 2.8$ – 29.4 °

$\mu = 0.09$ mm⁻¹

$T = 100.0$ (1) K

Needle, yellow

$0.45 \times 0.15 \times 0.05$ mm

Data collection

Bruker SMART APEXII CCD area-detector diffractometer

Radiation source: fine-focus sealed tube

Monochromator: graphite

$T = 100.0$ (1) K

ϕ and ω scans

Absorption correction: multi-scan (SADABS; Bruker, 2005)

$T_{\min} = 0.959$, $T_{\max} = 0.996$

19968 measured reflections

3402 independent reflections

2532 reflections with $I > 2\sigma(I)$

$R_{\text{int}} = 0.052$

$\theta_{\text{max}} = 30.0$ °

$\theta_{\text{min}} = 2.1$ °

$h = -18 \rightarrow 18$

$k = -20 \rightarrow 20$

$l = -8 \rightarrow 8$

Refinement

| | |
|--|--|
| Refinement on F^2 | Secondary atom site location: difference Fourier map |
| Least-squares matrix: full | Hydrogen site location: inferred from neighbouring sites |
| $R[F^2 > 2\sigma(F^2)] = 0.072$ | H atoms treated by a mixture of independent and constrained refinement |
| $wR(F^2) = 0.206$ | $w = 1/[\sigma^2(F_o^2) + (0.099P)^2 + 1.0519P]$ |
| $S = 1.06$ | where $P = (F_o^2 + 2F_c^2)/3$ |
| 3402 reflections | $(\Delta/\sigma)_{\max} < 0.001$ |
| 194 parameters | $\Delta\rho_{\max} = 0.66 \text{ e } \text{\AA}^{-3}$ |
| Primary atom site location: structure-invariant direct methods | $\Delta\rho_{\min} = -0.31 \text{ e } \text{\AA}^{-3}$ |
| | Extinction correction: none |

Special details

Experimental. The low-temperature data was collected with the Oxford Cryosystem Cobra low-temperature attachment.

Geometry. All e.s.d.'s (except the e.s.d. in the dihedral angle between two l.s. planes) are estimated using the full covariance matrix. The cell e.s.d.'s are taken into account individually in the estimation of e.s.d.'s in distances, angles and torsion angles; correlations between e.s.d.'s in cell parameters are only used when they are defined by crystal symmetry. An approximate (isotropic) treatment of cell e.s.d.'s is used for estimating e.s.d.'s involving l.s. planes.

Refinement. Refinement of F^2 against ALL reflections. The weighted R -factor wR and goodness of fit S are based on F^2 , conventional R -factors R are based on F , with F set to zero for negative F^2 . The threshold expression of $F^2 > \sigma(F^2)$ is used only for calculating R -factors(gt) *etc.* and is not relevant to the choice of reflections for refinement. R -factors based on F^2 are statistically about twice as large as those based on F , and R -factors based on ALL data will be even larger.

Fractional atomic coordinates and isotropic or equivalent isotropic displacement parameters (\AA^2)

| | x | y | z | $U_{\text{iso}}^*/U_{\text{eq}}$ |
|------|--------------|--------------|-------------|----------------------------------|
| O1 | 0.12067 (11) | 1.03082 (11) | 0.3256 (2) | 0.0223 (4) |
| H1O1 | 0.1550 | 1.0024 | 0.2388 | 0.027* |
| O2 | 0.07156 (12) | 1.12650 (11) | 0.6488 (3) | 0.0227 (4) |
| N1 | 0.26011 (14) | 0.97668 (12) | 0.1182 (3) | 0.0184 (4) |
| N2 | 0.10257 (15) | 0.90586 (15) | -0.2092 (3) | 0.0251 (4) |
| H1N2 | 0.058 (2) | 0.909 (2) | -0.349 (5) | 0.030* |
| H2N2 | 0.110 (2) | 0.954 (2) | -0.124 (5) | 0.030* |
| C1 | 0.20451 (16) | 0.89186 (15) | -0.2205 (3) | 0.0192 (4) |
| C2 | 0.22641 (18) | 0.83919 (16) | -0.3939 (4) | 0.0225 (4) |
| H2 | 0.165 (2) | 0.8218 (19) | -0.497 (5) | 0.027* |
| C3 | 0.32708 (19) | 0.82255 (14) | -0.4076 (4) | 0.0219 (5) |
| H3 | 0.339 (2) | 0.7874 (19) | -0.528 (5) | 0.026* |
| C4 | 0.40918 (18) | 0.85597 (15) | -0.2452 (4) | 0.0216 (4) |
| H4 | 0.477 (2) | 0.8429 (19) | -0.253 (4) | 0.026* |
| C5 | 0.38917 (17) | 0.90701 (14) | -0.0713 (4) | 0.0196 (4) |
| H5 | 0.447 (2) | 0.9297 (18) | 0.037 (5) | 0.024* |

supplementary materials

| | | | | |
|------|--------------|--------------|-------------|------------|
| C6 | 0.28785 (16) | 0.92618 (14) | -0.0560 (3) | 0.0168 (4) |
| C7 | 0.32762 (16) | 1.02164 (14) | 0.2604 (3) | 0.0192 (4) |
| H7 | 0.403 (2) | 1.0240 (18) | 0.247 (4) | 0.023* |
| C8 | 0.30011 (16) | 1.07288 (14) | 0.4405 (3) | 0.0174 (4) |
| C9 | 0.37772 (17) | 1.11996 (14) | 0.5926 (4) | 0.0195 (4) |
| H9 | 0.449 (2) | 1.1215 (18) | 0.569 (4) | 0.023* |
| C10 | 0.35346 (17) | 1.16977 (14) | 0.7632 (4) | 0.0196 (4) |
| H10 | 0.407 (2) | 1.2018 (18) | 0.862 (5) | 0.024* |
| C11 | 0.25165 (17) | 1.17414 (14) | 0.7875 (3) | 0.0189 (4) |
| H11 | 0.238 (2) | 1.2072 (18) | 0.902 (5) | 0.023* |
| C12 | 0.17424 (16) | 1.12778 (14) | 0.6423 (3) | 0.0177 (4) |
| C13 | 0.19759 (15) | 1.07615 (14) | 0.4659 (3) | 0.0170 (4) |
| C14 | 0.04456 (18) | 1.17522 (17) | 0.8283 (4) | 0.0263 (5) |
| H14A | 0.0835 | 1.1510 | 0.9665 | 0.039* |
| H14B | -0.0280 | 1.1678 | 0.8209 | 0.039* |
| H14C | 0.0600 | 1.2396 | 0.8181 | 0.039* |

Atomic displacement parameters (\AA^2)

| | U^{11} | U^{22} | U^{33} | U^{12} | U^{13} | U^{23} |
|-----|-------------|-------------|-------------|-------------|------------|-------------|
| O1 | 0.0173 (7) | 0.0307 (8) | 0.0180 (7) | -0.0022 (6) | 0.0024 (6) | -0.0069 (6) |
| O2 | 0.0202 (8) | 0.0294 (8) | 0.0203 (7) | -0.0001 (6) | 0.0081 (6) | -0.0067 (6) |
| N1 | 0.0189 (8) | 0.0220 (9) | 0.0144 (8) | 0.0017 (7) | 0.0042 (7) | 0.0003 (6) |
| N2 | 0.0188 (9) | 0.0345 (11) | 0.0220 (10) | 0.0020 (8) | 0.0045 (8) | -0.0037 (8) |
| C1 | 0.0186 (10) | 0.0229 (10) | 0.0166 (9) | 0.0026 (7) | 0.0052 (8) | 0.0020 (8) |
| C2 | 0.0253 (11) | 0.0247 (10) | 0.0156 (10) | -0.0014 (8) | 0.0009 (8) | -0.0010 (8) |
| C3 | 0.0354 (12) | 0.0175 (10) | 0.0149 (9) | 0.0024 (8) | 0.0103 (9) | -0.0014 (7) |
| C4 | 0.0214 (10) | 0.0217 (10) | 0.0245 (11) | 0.0023 (8) | 0.0110 (9) | 0.0031 (8) |
| C5 | 0.0182 (10) | 0.0201 (9) | 0.0196 (10) | -0.0015 (8) | 0.0026 (8) | 0.0005 (8) |
| C6 | 0.0219 (10) | 0.0163 (9) | 0.0126 (9) | 0.0008 (7) | 0.0045 (7) | 0.0003 (7) |
| C7 | 0.0203 (10) | 0.0207 (10) | 0.0174 (10) | 0.0007 (8) | 0.0056 (8) | 0.0022 (7) |
| C8 | 0.0200 (10) | 0.0176 (9) | 0.0154 (9) | 0.0026 (7) | 0.0054 (7) | 0.0014 (7) |
| C9 | 0.0171 (10) | 0.0220 (10) | 0.0195 (10) | 0.0003 (8) | 0.0042 (8) | 0.0032 (8) |
| C10 | 0.0205 (10) | 0.0195 (9) | 0.0168 (10) | -0.0020 (8) | 0.0000 (8) | 0.0002 (8) |
| C11 | 0.0258 (11) | 0.0175 (9) | 0.0139 (9) | 0.0013 (8) | 0.0055 (8) | -0.0014 (7) |
| C12 | 0.0165 (9) | 0.0211 (9) | 0.0161 (9) | 0.0027 (7) | 0.0049 (7) | 0.0019 (7) |
| C13 | 0.0178 (10) | 0.0188 (9) | 0.0130 (9) | -0.0004 (7) | 0.0003 (7) | 0.0006 (7) |
| C14 | 0.0252 (11) | 0.0362 (13) | 0.0194 (11) | 0.0023 (9) | 0.0095 (9) | -0.0055 (9) |

Geometric parameters (\AA , $^\circ$)

| | | | |
|---------|-----------|--------|-----------|
| O1—C13 | 1.351 (2) | C5—C6 | 1.398 (3) |
| O1—H1O1 | 0.8812 | C5—H5 | 0.95 (3) |
| O2—C12 | 1.373 (2) | C7—C8 | 1.454 (3) |
| O2—C14 | 1.429 (3) | C7—H7 | 1.03 (3) |
| N1—C7 | 1.282 (3) | C8—C9 | 1.405 (3) |
| N1—C6 | 1.419 (3) | C8—C13 | 1.406 (3) |
| N2—C1 | 1.386 (3) | C9—C10 | 1.376 (3) |
| N2—H1N2 | 0.93 (3) | C9—H9 | 1.00 (3) |

| | | | |
|--------------|--------------|-----------------|--------------|
| N2—H2N2 | 0.86 (3) | C10—C11 | 1.395 (3) |
| C1—C2 | 1.400 (3) | C10—H10 | 0.95 (3) |
| C1—C6 | 1.413 (3) | C11—C12 | 1.377 (3) |
| C2—C3 | 1.380 (3) | C11—H11 | 0.91 (3) |
| C2—H2 | 0.94 (3) | C12—C13 | 1.415 (3) |
| C3—C4 | 1.392 (3) | C14—H14A | 0.9600 |
| C3—H3 | 0.95 (3) | C14—H14B | 0.9600 |
| C4—C5 | 1.381 (3) | C14—H14C | 0.9600 |
| C4—H4 | 0.94 (3) | | |
| C13—O1—H1O1 | 101.4 | C8—C7—H7 | 117.8 (15) |
| C12—O2—C14 | 116.25 (17) | C9—C8—C13 | 119.34 (18) |
| C7—N1—C6 | 121.47 (18) | C9—C8—C7 | 119.24 (19) |
| C1—N2—H1N2 | 112.5 (18) | C13—C8—C7 | 121.42 (19) |
| C1—N2—H2N2 | 100 (2) | C10—C9—C8 | 120.3 (2) |
| H1N2—N2—H2N2 | 119 (3) | C10—C9—H9 | 119.9 (15) |
| N2—C1—C2 | 119.6 (2) | C8—C9—H9 | 119.5 (15) |
| N2—C1—C6 | 121.74 (19) | C9—C10—C11 | 120.5 (2) |
| C2—C1—C6 | 118.64 (19) | C9—C10—H10 | 118.3 (16) |
| C3—C2—C1 | 121.0 (2) | C11—C10—H10 | 121.2 (16) |
| C3—C2—H2 | 127.5 (17) | C12—C11—C10 | 120.37 (19) |
| C1—C2—H2 | 111.4 (17) | C12—C11—H11 | 121.2 (17) |
| C2—C3—C4 | 120.38 (19) | C10—C11—H11 | 118.4 (17) |
| C2—C3—H3 | 118.6 (16) | O2—C12—C11 | 125.89 (18) |
| C4—C3—H3 | 121.0 (17) | O2—C12—C13 | 114.12 (18) |
| C5—C4—C3 | 119.5 (2) | C11—C12—C13 | 119.99 (19) |
| C5—C4—H4 | 120.7 (17) | O1—C13—C8 | 121.42 (18) |
| C3—C4—H4 | 119.9 (17) | O1—C13—C12 | 119.14 (18) |
| C4—C5—C6 | 121.2 (2) | C8—C13—C12 | 119.44 (18) |
| C4—C5—H5 | 117.7 (17) | O2—C14—H14A | 109.5 |
| C6—C5—H5 | 121.1 (16) | O2—C14—H14B | 109.5 |
| C5—C6—C1 | 119.32 (18) | H14A—C14—H14B | 109.5 |
| C5—C6—N1 | 124.99 (19) | O2—C14—H14C | 109.5 |
| C1—C6—N1 | 115.67 (18) | H14A—C14—H14C | 109.5 |
| N1—C7—C8 | 121.86 (19) | H14B—C14—H14C | 109.5 |
| N1—C7—H7 | 120.3 (15) | | |
| N2—C1—C2—C3 | -178.8 (2) | C13—C8—C9—C10 | -0.8 (3) |
| C6—C1—C2—C3 | -1.4 (3) | C7—C8—C9—C10 | 179.32 (19) |
| C1—C2—C3—C4 | 1.7 (3) | C8—C9—C10—C11 | 0.0 (3) |
| C2—C3—C4—C5 | -0.8 (3) | C9—C10—C11—C12 | 0.7 (3) |
| C3—C4—C5—C6 | -0.4 (3) | C14—O2—C12—C11 | -2.4 (3) |
| C4—C5—C6—C1 | 0.6 (3) | C14—O2—C12—C13 | 178.04 (18) |
| C4—C5—C6—N1 | 178.96 (19) | C10—C11—C12—O2 | 179.84 (19) |
| N2—C1—C6—C5 | 177.56 (19) | C10—C11—C12—C13 | -0.7 (3) |
| C2—C1—C6—C5 | 0.2 (3) | C9—C8—C13—O1 | -179.00 (18) |
| N2—C1—C6—N1 | -0.9 (3) | C7—C8—C13—O1 | 0.9 (3) |
| C2—C1—C6—N1 | -178.23 (19) | C9—C8—C13—C12 | 0.9 (3) |
| C7—N1—C6—C5 | 11.1 (3) | C7—C8—C13—C12 | -179.28 (18) |
| C7—N1—C6—C1 | -170.51 (19) | O2—C12—C13—O1 | -0.7 (3) |

supplementary materials

| | | | |
|--------------|--------------|----------------|-------------|
| C6—N1—C7—C8 | -179.44 (18) | C11—C12—C13—O1 | 179.74 (18) |
| N1—C7—C8—C9 | 179.29 (19) | O2—C12—C13—C8 | 179.42 (17) |
| N1—C7—C8—C13 | -0.6 (3) | C11—C12—C13—C8 | -0.1 (3) |

Hydrogen-bond geometry (\AA , $^\circ$)

| <i>D</i> —H \cdots <i>A</i> | <i>D</i> —H | H \cdots <i>A</i> | <i>D</i> \cdots <i>A</i> | <i>D</i> —H \cdots <i>A</i> |
|-------------------------------------|-------------|---------------------|----------------------------|-------------------------------|
| O1—H1O1 \cdots N1 | 0.88 | 1.77 | 2.602 (2) | 158 |
| N2—H1N2 \cdots O1 ⁱ | 0.93 (3) | 2.56 (3) | 3.030 (3) | 111 (2) |
| N2—H1N2 \cdots O2 ⁱ | 0.93 (3) | 2.29 (3) | 3.181 (3) | 161 (3) |
| N2—H2N2 \cdots N1 | 0.87 (3) | 2.23 (3) | 2.759 (3) | 119 (2) |
| C3—H3 \cdots Cg1 ⁱⁱ | 0.94 (3) | 2.64 (3) | 3.458 (2) | 145 (2) |
| C11—H11 \cdots Cg2 ⁱⁱⁱ | 0.91 (3) | 2.87 (3) | 3.538 (2) | 142 (2) |

Symmetry codes: (i) $-x, -y+2, -z$; (ii) $x, -y+1/2, z-3/2$; (iii) $x, -y+3/2, z-1/2$.

Fig. 1

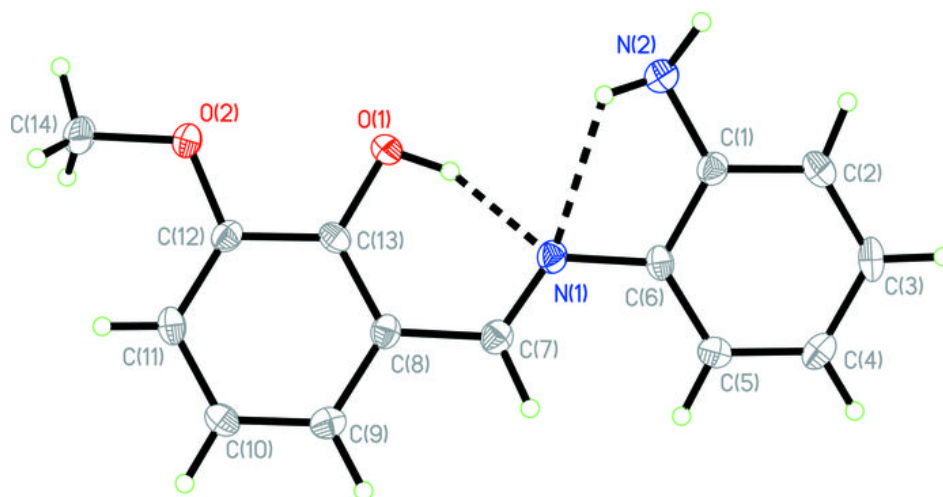


Fig. 2

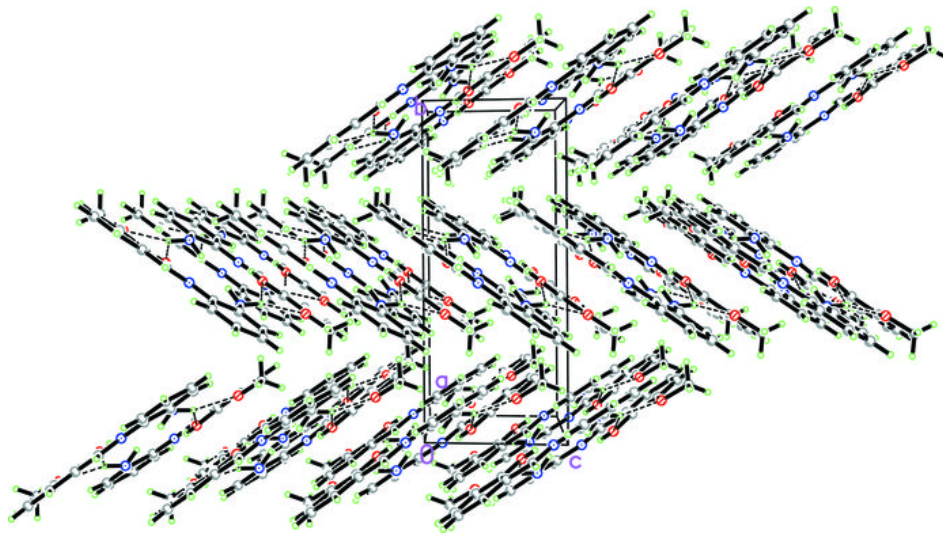


Fig. 3

