

Cloning and Optimization of Soluble Vascular Endothelial Growth Factor₁₆₅ Expression in *Escherichia coli*

Ali Salimi and Mohammad Babashamsi*

Monoclonal Antibody Research Center, Avicenna Research Institute, ACECR, Tehran, Iran

Abstract

Background: Vascular Endothelial Growth Factor (VEGF) is a coordinate regulator of physiological angiogenesis during embryogenesis, skeletal growth and reproductive functions. There are several types of VEGF, including VEGF₁₆₅. VEGFs stimulate endothelial cell growth, angiogenesis, and capillary permeability. Low induction temperature is a major factor for expression of the recombinant VEGF₁₆₅ in soluble form. The purpose of this study was cloning and optimization of soluble vascular endothelial growth factor₁₆₅ expression in *Escherichia coli* (*E. coli*).

Methods: In this study, total RNA of HeLa cell [cervix epithelium] was extracted. The VEGF₁₆₅ gene was amplified by reverse transcription polymerase chain reaction (RT-PCR), and then VEGF₁₆₅ was subcloned into prokaryotic expression vectors pET-32a(+) and transformed into BL21 (DE3) *E. coli* strain. VEGF₁₆₅ expression was optimized by fine adjustments such as induction time and incubation temperature. VEGF₁₆₅ was analyzed by DNA sequencing prior to expression and the protein was further characterized by SDS-PAGE and immunoblotting using His-tag specific polyclonal antibody.

Results: Our results demonstrated that VEGF₁₆₅ was successfully cloned and expressed in pET-32a(+) vector. Optimization of the expression procedure showed that, induction by 1 mM IPTG at OD₆₀₀=0.7 and overnight incubation at 22 °C resulted in the highest expression levels of soluble VEGF₁₆₅.

Conclusion: In this study, the expression of VEGF₁₆₅ in a high soluble level was successfully cloned and optimized.

Avicenna J Med Biotech 2016; 8(1): 23-28

Keywords: Expression, Inclusion bodies, Recombinant, VEGF₁₆₅ protein

Introduction

Angiogenesis occurs in an environment where angiogenic signaling overcomes antiangiogenic factors that regulate blood development within an organ¹. Vascular Endothelial Growth Factor (VEGF) is a signal protein produced by cells that stimulates vasculogenesis and angiogenesis². It is part of the system that restores the oxygen supply to tissues when blood circulation is inadequate³. Serum concentration of VEGF is high in bronchial asthma and diabetes mellitus and generally VEGF over-expression is observed in various diseases⁴. VEGF's normal function is to create new blood vessels during embryonic development, new blood vessels after injury, muscle following exercise, reproductive functions and new vessels (collateral circulation) to bypass blocked vessels⁵. There are multiple isoforms of VEGF-A that result from alternative splicing of mRNA from a single, 8-exon VEGF-A gene⁶. These are classified into two groups which are referred to ac-

cording to their terminal exon (exon 8) splice site: the proximal splice site (de-noted VEGF_{xxx}) or distal splice site (VEGF_{xxx}b).

In addition, alternate splicing of exon 6 and 7 alters their heparin-binding affinity and amino acid number (in humans: VEGF₁₂₁, VEGF_{121b}, VEGF₁₄₅, VEGF₁₆₅, VEGF_{165b}, VEGF₁₈₉, VEGF₂₀₆⁷. VEGF₁₆₅ stimulates endothelial cell growth, angiogenesis, and capillary permeability. VEGF₁₆₅ has also been twisted in pathological angiogenesis joined with tumors⁸. The properties of native VEGF closely correspond to those of VEGF₁₆₅. Expression of recombinant proteins in *Escherichia coli* (*E. coli*) is severely influenced under various conditions. In general, conditions that decrease the rate of protein synthesis, such as low induction temperatures tend to increase the percentage of target proteins found in soluble form^{9,10}. In many applications, it is desirable to express target proteins in their soluble,

active form¹¹. The purpose of this study was cloning and optimization of soluble VEGF₁₆₅ expression in *E. coli*.

Materials and Methods

Materials

Reagents and materials were purchased from the following sources. HeLa cell line (Cell Bank of ARC, Iran), Easy-spin RNA Extraction kit (INtRON, USA), cDNA Reverse Transcription Kits (Novagen, USA), gel extraction kit (Qiagen, USA), the *E. coli* host strain BL21 (DE3), pET-32a(+) plasmid (Novagen, USA), PCR reagents, restriction enzymes and T4 DNA ligase (Promega, USA), ECL Supersignal system (Pierce, USA), plasmid extraction kit and PCR purification kits (Bioneer, USA), Trypsin-EDTA, RPMI 1640 medium and Fetal Bovine Serum (Gibco, USA), anti-His₆-Peroxidase (Roche, Germany), VEGF₁₆₅ Protein (Novus Biologicals, USA), PVDF Western Blotting Membranes and Skim milk (Roche, Germany). Other chemicals were all commercially available reagents of analytical grade. All solutions were prepared using deionized water.

Bioinformatic tools for PCR primer design

The PCR primers were designed by Gene Runner 3.05 Version, NEB Cutter, Codon Usage calculator and Mutation Surveyor V3.30 (Demo). Primers were designed by addition of 2 nucleotides for BamHI and 3 nucleotides for XhoI on either side of their recognition site.

Cell culture

HeLa cells were cultured in RPMI 1640 containing 10% heat inactivated fetal bovine serum, 100 units/ml penicillin G sodium, 100 µg/ml streptomycin sulfate in a 5% CO₂ atmosphere at 37 °C. HeLa cells were detached with 1 ml of 0.25% Trypsin-EDTA for 5 min. A density of 1×10⁵ cells was used for RNA extraction.

RNA extraction and cDNA synthesis

Total RNA was extracted using the Easy-spin RNA Extraction kit. RNA purity was estimated by measuring the ratio of absorbance at 260 per 280 nm (approximately 1.8) and by Ethidium bromide staining of 18S and 28S RNA after agarose gel electrophoresis. Subsequently, RNA concentrations were determined using A260 values. cDNA synthesis was performed using high Capacity cDNA Reverse Transcription Kits. Two micrograms of RNA were reverse transcribed using 10 µl of 10X RT buffer, 0.8 µl of 25X dNTP Mix (100 mM), 2 µl of RT Random Primers, 1 µl of Multi-Scribe™ Reverse Transcriptase, and 4.2 µl of Nuclease-free H₂O. Reverse transcription reaction was conducted at 37 °C for 120 min. Thereafter, the reaction mixture was heated to terminate the reaction at 85 °C for 5 min. Beta actin was used as a loading control in PCR for confirming cDNA. The cDNA was stored at -20 °C until analysis.

Construction of VEGF₁₆₅ expression vector

The VEGF₁₆₅ cDNA sequence was amplified by PCR using the primers 5'-CGGGATCCCCGTATGAACTTTCTGCTGTCTTGGGTG-3' and 5'-CCCTCGAGGGTCACCGCCTTGGCTTGTAC-3'. PCR was performed in a 25 µl master mix containing PCR 10X buffer, 1.5 mM MgCl₂, 0.4 mM dNTPs, 1 unit of DNA polymerase, and 200 nmol of each forward and reverse primer. The thermal cycling parameters used for PCR were as follows: 30 s at 61 °C for annealing, 30 s at 72 °C for extension, and 30 s at 94 °C for denaturation. After 40 cycles, amplified cDNA products were electrophoresed on a 1.5% Low Electroendosmosis (LE) agarose gel, extracted and purified by QIAquick gel extraction kit according to the manufacturer's protocol. The gel extract was digested using BamHI and XhoI and ligated into the multiple cloning sites of pET-32a(+). The engineered VEGF₁₆₅_pET-32a(+) vector was transformed into DH5α and BL21(DE3) cells. The BL21 (DE3) was cultured on LB agar plate and a colony was selected for colony PCR confirmation test.

Expression of VEGF₁₆₅

Escherichia coli (E. coli) BL21 (DE3) harboring the VEGF₁₆₅_pET-32a(+) positive colony was grown in 100 ml LB broth at 37 °C including 100 µg/ml ampicillin to achieve an optical density (OD) of 0.7 (stationary growth phase) at 600 nm and at this time, 1 mM isopropyl-β-D-thiogalactoside (IPTG) was added to 50 ml LB broth and the same amount was considered as uninduced (-IPTG) control. Incubation was continued at 37 °C. The samples from induced and uninduced culture were collected within 2, 4, 6 hr and overnight after induction. Samples were accumulated, centrifuged at 6000 rpm for 5 min. Harvested cells were re-suspended with 6× loading protein buffer containing 2-ME, boiled and subjected to SDS-PAGE. The expression of recombinant VEGF₁₆₅ protein in bacteria was confirmed by immunoblotting technique. The rate of VEGF₁₆₅ expression was determined by AlphaEase FC Software. In this method, the gel was scanned and the ratio of the VEGF₁₆₅ band intensity to the total band intensity was calculated (Table 1).

Western blot analysis

Whole cell pellets were separated on 12% SDS-PAGE gel and transferred to PVDF. Membranes were blocked for overnight with 5% skim milk in 0.1%

Table 1. Expression rate measured by AlphaEase FC Software. VEGF₁₆₅ expressed 40.2% of the total protein (4 hr at 37 °C). Insoluble: 87.2% of the total protein (4 hr at 37 °C) and 79.2% (18 hr at 22 °C). Soluble: 12.8% of the total protein (4 hr at 37 °C) and 20.8% (18 hr at 22 °C)

Condition	VEGF ₁₆₅ expression		Insoluble		Soluble	
	% *	IDV	% *	IDV	% *	IDV
37 °C-4 hr	40.2	255816	87.2	2553024	12.8	375084
22 °C-18 hr	--	--	79.2	2552940	20.8	671550

IDV=Integrated Density Value

* Based on integrated density value

Tween 20 in PBS buffer, incubated at room temperature for 2 hr with monoclonal anti His₆ conjugated with horseradish peroxidase, then washed for 10 min three times and developed by supersignal chemiluminescence substrate.

Optimization of VEGF₁₆₅ expression

To look for culture parameters affecting the expression and aggregation protection of the fusion protein including time and temperature, 50 ml of the cultured BL21 (DE3) pellet under different induction times (4 and 18 hr), and temperatures (22 and 37 °C) was re-suspended by swirling and sonication on ice using a microtip with the power level set of 4, at 40% duty for 20 bursts. The lysate was centrifuged for 10 min at 14,000×g to separate the soluble and insoluble fractions. The soluble and insoluble fractions were immediately mixed by 6x protein loading buffer containing 2-ME and heated for 3 min at 85 °C to denature proteins. The fractions were analyzed by SDS-PAGE to look for optimal condition for VEGF₁₆₅ expression. The rate of soluble VEGF₁₆₅ expression was determined by AlphaEase FC Software. The gel was scanned and the ratio of the soluble VEGF₁₆₅ band intensity to the insoluble VEGF₁₆₅ band intensity was calculated (Table 1).

Results

RNA extraction and cDNA synthesis

The 18 S and 28 S bands were identified from RNA extract of HeLa cells on agarose gel. Two bands were identified from PCR product of cDNA on agarose gel (Figure 1A). The band (441 bp) shorter in length was confirmed as VEGF₁₂₁ while the longer band (576 bp) was normal VEGF₁₆₅ as examined by sequencing.

Construction of VEGF₁₆₅ expression vector

The VEGF₁₆₅pET-32a(+) was constructed with a fusion partner of Trx. The cloned sequencing showed the insertion of the VEGF₁₆₅ gene into the vector (Figure 2). The results of the effect of the colony PCR test

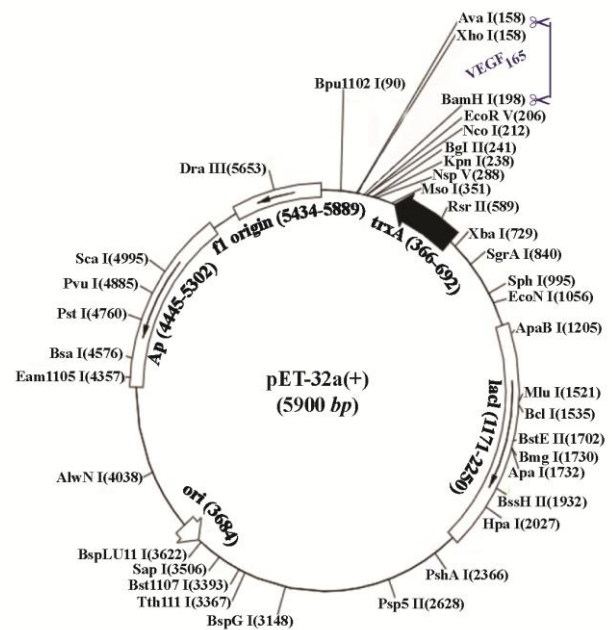


Figure 2. Schematic representation of recombinant expression vector. The VEGF₁₆₅ gene inserted into the multiple cloning sites of pET-32a(+).

Website	Clustalw2
Alignment Program	Local Water
Matrix	EBLOSUM62
Gap_penalty	10
Extend_penalty	0.5
Length	163
Identity	163/163 (100.0%)
Similarity	163/163 (100.0%)
Gaps	0/163 (0.0%)
Score	927
Accession numbers	NM_001171626.1

```

1 MAEGGGQNHHEVVKFMDVYQRSYCHPIETLVDIFQEYDPEIEYIFKPCSCV 50
29 MAEGGGQNHHEVVKFMDVYQRSYCHPIETLVDIFQEYDPEIEYIFKPCSCV 78
51 PLMRCGGCCNDEGLECVPTTEESNITMQIMRIKPHQGQHHIGEMSFLOHNNK 100
79 PLMRCGGCCNDEGLECVPTTEESNITMQIMRIKPHQGQHHIGEMSFLOHNNK 128
101 ECRPKKDRARQENPCGPGCSERRKHLFVQDPQTCCKSCCKNTDSRCKARQLE 150
129 ECRPKKDRARQENPCGPGCSERRKHLFVQDPQTCCKSCCKNTDSRCKARQLE 178
151 LNERTCRCDKPRR 163
179 LNERTCRCDKPRR 191
    
```

Figure 3. Sequence analysis of VEGF₁₆₅. The BLAST result search for the highest homology found in GeneBank database.

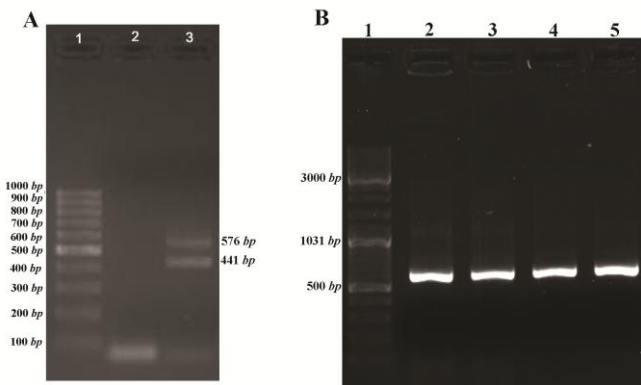


Figure 1. A) PCR amplification of VEGF₁₆₅ gene from cDNA on agarose gel 1.5%. Lanes 1: 100 bp DNA ladder, 2: negative control and 3: PCR products of cDNA. B) PCR screening of the recombinant plasmid VEGF₁₆₅_pET32a(+) on agarose gel 1.5%. Lanes 1: 100 bp DNA ladder, 2-5: PCR products.

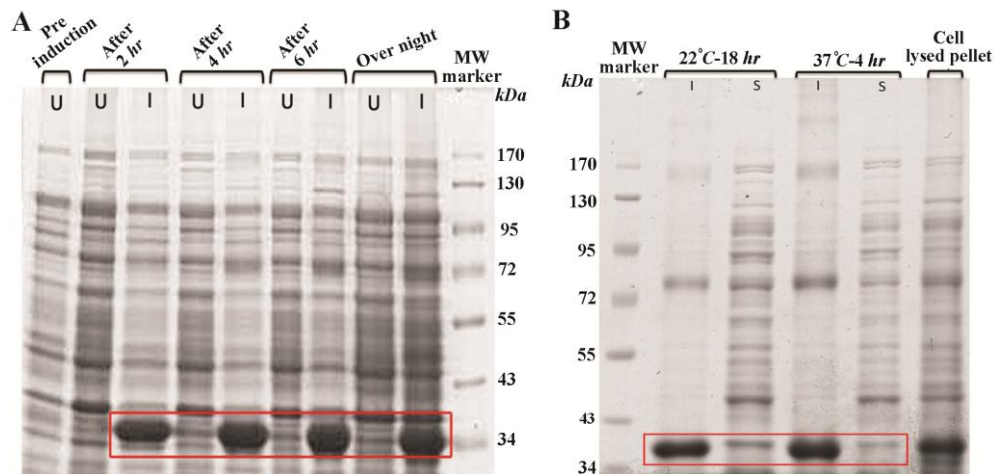


Figure 4. A) SDS-PAGE 12% (w/v) analysis of VEGF₁₆₅ at different induction times. U=uninduced (-IPTG), I=induced (+IPTG). B) SDS-PAGE analysis of VEGF₁₆₅. The effects of induction time and temperature on soluble and insoluble proteins expression. I=Insoluble. S=Soluble.

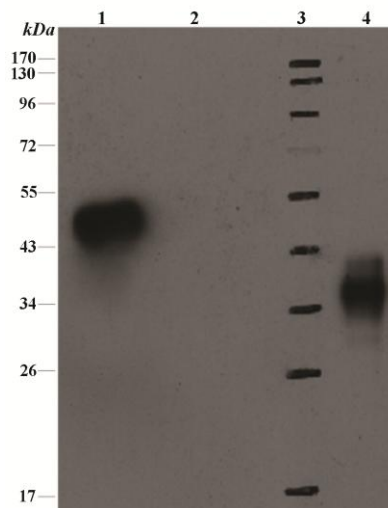


Figure 5. SDS-PAGE 12% (w/v) analysis of VEGF₁₆₅ and immunoblot with anti His Tag antibody. Lanes 1) positive control (His-Streptokinase), 2) negative control; bacterial lysate without insert, 3) protein molecular marker, 4) cell lysate of the transformed VEGF₁₆₅_pET-32 a(+)-construct.

Expression of VEGF₁₆₅

The protein expression was carried out under induction and un-induction conditions in different times (2, 4, 6, hr and overnight) in LB medium in shake flask. The expressed protein was subjected to 12% (w/v) SDS-PAGE under reducing conditions and visualized by Coomassie blue staining. As shown in figure 4A, there is an over expression (40.2% of the total expressed protein) after 4 hr of induction (Table 1).

Western blot analysis

The expressed VEGF₁₆₅_pET-32a (+) was analyzed by Western blot method (Figure 5). The result indicates that the molecular size of VEGF₁₆₅ with tags was 38 kDa (as estimated in 12% SDS-PAGE gel).

Optimization of VEGF₁₆₅ expression

The effects of induction parameters (Time and temperature) on soluble VEGF₁₆₅ expression were exam-

ined after addition of 1mM of IPTG. The results indicated that the soluble VEGF₁₆₅ expression was highest at 22 °C. In addition, the optimal induction was performed at 18 hrs after addition of the IPTG. As shown in figure 4B, induction for 18 hr increased the soluble VEGF₁₆₅ expression to 20.8% of the total expressed VEGF₁₆₅ protein compared with that of 4 hr at 37 °C (12.8% of the total expressed VEGF₁₆₅ protein) (Table 1). Taken together, the optimal culture condition for VEGF₁₆₅ expression by *E. coli* was established as 1 mM of IPTG at 22 °C for 18 hr.

Discussion

VEGF-A has several variants; VEGF₁₆₅ appears to be the most abundant and potent isoform, followed by VEGF₁₂₁ and VEGF₁₈₉^{12,13}. Isoforms other than VEGF₁₂₁ contain basic heparin-binding regions and are not freely diffusible¹³. VEGF₁₆₅ is a 38 kDa disulphide-linked homodimer protein, and a potent and specific endothelial cell mitogen involved in the induction of angiogenesis, that is the growth of new blood vessels¹⁴. VEGF₁₆₅ binds the semaphorin receptor, Neuropilin-1 and promotes complex formation with VEGF R2¹⁵. In this study, VEGF₁₆₅ was selected because of the mentioned superiorities. VEGF protein has been isolated from HeLa cells¹⁶, but, in this study, RNA was extracted and VEGF₁₂₁ and VEGF₁₆₅ gene from this cell was amplified for the first time.

Given the choice of parameters of primer designing, such as cost effectiveness and saving the time, the primers were designed in such a way that it could eliminate the sub-cloning step into T vector, by direct cloning of the gene in the expression vector¹⁷. In the usual gene cloning, the gene is cloned in a T vector, digested by restriction enzyme and sub cloned in an expression vector for correct restriction site formation. The first stage (T vector cloning) was eliminated by addition of 2 nucleotides for BamHI and 3 nucleotides for XhoI on

either side of their recognition site for an enzyme to cleave efficiently. So, the VEGF gene was cloned directly in the expression vector.

In this study, the isoform VEGF₁₆₅ was chosen to be prokaryotically expressed to soluble form. VEGF₁₆₅-pET-32a(+) was expressed as His_{x6} and thioredoxin (trx) tagged protein. The 6His_x helps to readily purify the protein with Ni-NTA affinity chromatography and the trx.tag as a highly soluble polypeptide can potentially enhance the expression and solubility of VEGF₁₆₅ protein in *E. coli*^{18,19}. VEGF₁₆₅ was cloned in pET-32a(+) vector as studied earlier²⁰ with some modifications and optimization of expression. The VEGF₁₆₅ has been produced in various vectors (pET-22b, pET-28a, pET-30a, pQE30, etc...) and hosts by researchers^{5,8,21-25} with a maximum expression level of 30% of the total protein. The expression of VEGF₁₆₅ in pET-32a(+) was 40% of the total expressed protein which is significantly higher in comparison with the studies by other researchers.

The aim of this work was optimization of soluble VEGF₁₆₅ expression in *E. coli*. In a study carried out by Bang et al the VEGF₁₆₅ was expressed in a fix temperature of 37 °C, while in this study, the temperature was optimized to get more soluble protein. The expression was optimized by adjustments such as induction time and incubation temperature for increasing the amount of soluble proteins⁵. Parameters to increase the percentage of soluble protein were the temperature of 22 °C and duration of 18 hr. Growth at 37 °C resulted in accumulation of inclusion body while incubation at 22 °C produced more soluble form of protein. In fact, this temperature helps the bacteria to consume all energy toward gradual protein biosynthesis and not cell division (Table 1) and thereby, lowering the rate of protein aggregation. This strategy facilitates the purification without denaturation, eliminating the problems such as urea purification process. Purification process at denaturing condition takes longer time with lower recovery and higher chance of miss folding²⁶⁻²⁹. A variety of methods have been published describing re-folding of insoluble proteins^{29,30}. Recombinant proteins expressed in *E. coli* are often produced as aggregates (Inclusion bodies). Even when inclusion bodies are formed, some proportion of the target protein is usually soluble within the cell. The high expression level of recombinant protein by the pET-32a(+) system limits the intracellular cell space and so it precipitates as aggregate forms. This is the key point in the importance of solubilization³¹.

Conclusion

In this study, the VEGF gene was isolated from HeLa cells for the first time and the expression vector for VEGF₁₆₅ gene was constructed. Optimization of the expression parameters, i.e., time and temperature resulted in a high level of soluble protein expression

in a prokaryotic expression system.

Acknowledgement

The authors are grateful to Iranian Council for Stem Cell Sciences and Technologies-Vice president of science and technology for financial support (Grant NO: F-50). We express our thanks to our colleagues Dr. Mahboobeh Nazari, Dr. Saeed Talebi and Mr. Reza Hadavi for scientific cooperation.

References

1. Catena R, Muniz-Medina V, Moralejo B, Javierre B, Best CJ, Emmert-Buck MR, et al. Increased expression of VEGF121/VEGF165-189 ratio results in a significant enhancement of human prostate tumor angiogenesis. *Int J Cancer* 2007;120(10):2096-2109.
2. Neufeld G, Cohen T, Gengrinovitch S, Poltorak Z. Vascular endothelial growth factor (VEGF) and its receptors. *FASEB J* 1999;13(1):9-22.
3. Chang YS, Munn LL, Hillsley MV, Dull RO, Yuan J, Lakshminarayanan S, et al. Effect of vascular endothelial growth factor on cultured endothelial cell monolayer transport properties. *Microvasc Res* 2000;59(2):265-277.
4. Cooper ME, Vranes D, Youssef S, Stacker SA, Cox AJ, Rizkalla B, et al. Increased renal expression of vascular endothelial growth factor (VEGF) and its receptor VEGFR-2 in experimental diabetes. *Diabetes* 1999;48(11):2229-2239.
5. Kang W, Kim S, Lee S, Jeon E, Lee Y, Yun Y, et al. Characterization and optimization of vascular endothelial growth factor 165 (rhVEGF 165) expression in *Escherichia coli*. *Protein Expr Purif* 2013;87(2):55-60.
6. Harper SJ, Bates DO. VEGF-A splicing: the key to anti-angiogenic therapeutics? *Nat Rev Cancer* 2008;8(11):880-887.
7. Cébe Suarez S, Pieren M, Cariolato L, Arn S, Hoffmann U, Bogucki A, et al. A VEGF-A splice variant defective for heparan sulfate and neuropilin-1 binding shows attenuated signaling through VEGFR-2. *Cell Mol Life Sci* 2006;63(17):2067-2077.
8. Pizarro SA, Gunson J, Field MJ, Dinges R, Khoo S, Dalal M, et al. High-yield expression of human vascular endothelial growth factor VEGF(165) in *Escherichia coli* and purification for therapeutic applications. *Protein Expr Purif* 2010;72(2):184-193.
9. Molinkova D. Purification of *Escherichia coli*-expressed HIS-tagged Maedi-Visna p25 core antigen by Ni²⁺-chelate affinity chromatography. *Vet Med (Praha)* 2001;46(2):50-54.
10. Bitazar R, Taghi Naserpour F, Hajikhani B, Bagheri R, Salimi A. Cloning and expression of truncated chlamydial major outer membrane protein in *E. coli*: A miniature step Forward. *J Vaccines Vaccin* 2014;5:1.
11. Novy R, Drott D, Yaeger K, Mierendorf R. Overcoming the codon bias of *E. coli* for enhanced protein expression. *Innov* 2001;12:1-3.
12. Byrne AM, Bouchier-Hayes DJ, Harmey JH. Angiogenic and cell survival functions of vascular endothelial growth

- factor (VEGF). *J Cell Mol Med* 2005;9(4):777-794.
13. Robinson CJ, Stringer SE. The splice variants of vascular endothelial growth factor (VEGF) and their receptors. *J Cell Sci* 2001;114(Pt 5):853-865.
 14. Larentis AL, Argondizzo APC, dos Santos Esteves G, Jessouron E, Galler R, Medeiros MA. Cloning and optimization of induction conditions for mature PsaA (pneumococcal surface adhesin A) expression in *Escherichia coli* and recombinant protein stability during long-term storage. *Protein Expr Purif* 2011;78(1):38-47.
 15. Pan Q, Chathery Y, Wu Y, Rathore N, Tong RK, Peale F, et al. Neuropilin-1 binds to VEGF121 and regulates endothelial cell migration and sprouting. *J Biol Chem* 2007;282(33):24049-24056.
 16. Pollmann C, Huang X, Mall J, Bech-Otschir D, Naumann M, Dubiel W. The constitutive photomorphogenesis 9 signalosome directs vascular endothelial growth factor production in tumor cells. *Cancer Res* 2001;61(23):8416-8421.
 17. Rychlik W. Selection of primers for polymerase chain reaction. *Methods Mol Biol* 1993;15:31-40.
 18. Liu ZQ, Yang PC. Construction of pET-32 α (+) vector for protein expression and purification. *N Am J Med Sci* 2012;4(12):651-655.
 19. Mustacich D, Powis G. Thioredoxin reductase. *Biochem J* 2000;346 Pt 1:1-8.
 20. Bang SK, Kim YS, Chang BS, Park CB, Bang IS. Production and on-column re-folding of human vascular endothelial growth factor 165 in *Escherichia coli*. *Biotechnol Bioprocess Eng* 2013;18(5):835-842.
 21. Ye T, Lin Z, Lei H. High-level expression and characterization of an anti-VEGF165 single-chain variable fragment (scFv) by small ubiquitin-related modifier fusion in *Escherichia coli*. *Appl Microbiol Biotechnol* 2008;81(2):311-317.
 22. Lee GY, Jung WW, Kang CS, Bang IS. Expression and characterization of human vascular endothelial growth factor (VEGF165) in insect cells. *Protein Expr Purif* 2006;46(2):503-509.
 23. Catena R, Muniz-Medina V, Moralejo B, Javierre B, Best CJ, Emmert-Buck MR, et al. Increased expression of VEGF121/VEGF165-189 ratio results in a significant enhancement of human prostate tumor angiogenesis. *Int J Cancer* 2007;120(10):2096-2109.
 24. Shan B, Gao C, Chen JM, Bi XY, Zhang BY, Guo Y, et al. Establishment of a sandwich ELISA method for detection of vascular endothelial growth factor in serum samples of hepatocellular carcinoma patients. *Biomed Environ Sci* 2008;21(1):69-74.
 25. Yang P, Wang KZ, Shi ZB, Dang XQ, Yu PB, Wang CS, et al. Prokaryotic expression, purification and activity assay of recombinant vascular endothelial growth factor. *Nan Fang Yi Ke Da Xue Xue Bao* 2006;26(9):1263-8.
 26. Umetsu M, Tsumoto K, Nitta S, Adschiri T, Ejima D, Arakawa T, et al. Nondenaturing solubilization of beta2microglobulin from inclusion bodies by L-arginine. *Biochem Biophys Res Commun* 2005;328(1):189-197.
 27. Przybycien TM, Dunn JP, Valax P, Georgiou G. Secondary structure characterization of beta-lactamase inclusion bodies. *Protein Eng* 1994;7(1):131-136.
 28. Tsumoto K, Umetsu M, Kumagai I, Ejima D, Arakawa T. Solubilization of active green fluorescent protein from insoluble particles by guanidine and arginine. *Biochem Biophys Res Commun* 2003;312(4):1383-1386.
 29. Yang Z, Zhang L, Zhang Y, Zhang T, Feng Y, Lu X, et al. Highly efficient production of soluble proteins from insoluble inclusion bodies by a two-step-denaturing and refolding method. *PLoS One* 2011;6(7):e22981.
 30. Rogl H, Kosemund K, Kühlbrandt W, Collinson I. Refolding of *Escherichia coli* produced membrane protein inclusion bodies immobilised by nickel chelating chromatography. *FEBS Lett* 1998;432(1-2):21-26.
 31. Rajan RS, Illing ME, Bence NF, Kopito RR. Specificity in intracellular protein aggregation and inclusion body formation. *Proc Natl Acad Sci USA* 2001;98(23):13060-13065.