

Loss of ischaemic preconditioning in ovariectomized rat hearts: possible involvement of impaired protein kinase C ϵ phosphorylation

Ken Shimura^{1*}, Maiko Nagai¹, Kayoko Tamaki¹, and Roberto Bolli²

¹Department of Internal Medicine, Keio University School of Medicine, 35 Shinanomachi, Shinjuku-ku, Tokyo 160-8582, Japan; and ²The Institute of Molecular Cardiology, University of Louisville, Louisville, KY, USA

Received 5 December 2007; revised 18 March 2008; accepted 26 March 2008; online publish-ahead-of-print 4 April 2008

Time for primary review: 28 days

KEYWORDS

Oestrogen;
Gender;
Myocardial infarction;
Protein kinase C;
Reperfusion injury

Aims The aims of this study were to determine whether chronic oestrogen withdrawal influences the development of ischaemic preconditioning (IPC) in female hearts, to investigate the mechanism whereby IPC is impaired, and to assess whether direct activation of protein kinase C (PKC) can mimic IPC in female hearts with chronic oestrogen depletion.

Methods and results We performed Sham-operation (Sham) or bilateral ovariectomy on 16-week-old Sprague–Dawley female rats. Ovariectomized rats were randomized to subcutaneous implantation of 17 β -estradiol (OxE) or placebo (OxP) pellets. Four weeks later, isolated, perfused hearts were subjected to 30 min of ischaemia followed by 120 min of reperfusion with or without three cycles of 5 min ischaemia/5 min reperfusion. The cardioprotective effect of IPC was completely lost in the OxP group. Western immunoblots revealed that in the OxP group, IPC failed to translocate PKC ϵ to the membranous fraction and that phosphorylation of PKC ϵ (Ser⁷²⁹) and phosphoinositide-dependent kinase (PDK) 1 (Ser²⁴¹) was impaired. Oestrogen replacement restored the IPC effect, the translocation and phosphorylation of PKC ϵ , and the phosphorylation of PDK1. In the OxP group, pre-treatment with a PKC ϵ selective activator peptide (Ψ - ϵ RACK) mimicked the IPC effect. Pre-treatment with a phosphatidylinositol-3 kinase inhibitor before IPC abrogated the translocation and phosphorylation of PKC ϵ in the Sham group.

Conclusions The cardioprotective effect of IPC is lost in female hearts with chronic oestrogen withdrawal and this is due, at least in part, to impaired translocation and phosphorylation of PKC ϵ . Selective activation of PKC ϵ -mediated signalling can fully restore the IPC effect in a manner analogous to oestrogen replacement.

1. Introduction

In most industrialized nations, coronary heart disease (CHD) is the leading cause of mortality in adult women. As in males, the incidence of CHD in females increases with age,¹ but it is significantly lower than that in males until approximately 70 years of age. Since the incidence of CHD in females changes dramatically with the menopausal

status,¹ ovarian hormones are believed to protect female hearts from arteriosclerosis and CHD.

Some epidemiological studies have found that in-hospital mortality was higher in female patients with acute coronary syndrome (ACS) when compared with male patients.² A higher age at onset of ACS in female patients may contribute to higher in-hospital mortality. However, whether mortality after myocardial infarction is higher in females than in males remains controversial.

Clinical investigations of the effect of hormone replacement therapy (HRT), such as the Women's Health Initiative and the Heart and Oestrogen-Progestin Replacement Study

* Corresponding author. Tel: +81 3 3353 1211 ext. 62915; fax: +81 3 5269 2468.

E-mail address: shimmura@sc.itc.keio.ac.jp

II,^{3,4} have failed to demonstrate the usefulness of HRT in preventing the development of CHD and in reducing the mortality in post-menopausal patients with CHD. Collectively, these clinical trials indicate that HRT should not be used for the purpose of protecting the cardiovascular system.⁵ At least in part, the failure of these trials reflects the fact that our understanding of the cardiovascular effects of menopause and HRT is still limited.

The most powerful cardioprotective phenomenon identified to date is ischaemic preconditioning (IPC), an innate response that renders the heart relatively resistant to ischaemia (I)/reperfusion (R) injury.^{6,7} Although the effect of chronic oestrogen deficiency on myocardial I/R injury (including myocardial infarction) has been actively investigated during the last decade,^{8–12} little is known regarding whether chronic oestrogen deficiency affects the development of IPC. Accordingly, the aim of this study was to determine the influence of chronic oestrogen withdrawal on the development of IPC in female hearts and to investigate the mechanism(s) whereby the development of IPC is impaired in this setting. To accomplish these goals, we evaluated whether oestrogen replacement can restore the IPC effect in ovariectomized female rats. In addition, we investigated whether direct activation of protein kinase C (PKC) (which triggers the cardioprotective effect of IPC) can mimic the IPC effect in the absence of oestrogen replacement.

2. Methods

All procedures in the present study conformed to the principles outlined in the *Guide for the Care and Use of Laboratory Animals* published by the USA National Institutes of Health (NIH Publication No. 85-23, revised 1996).

A total of 130 female Sprague-Dawley (SD) rats (16-week-old) were randomly divided into two groups. Sham-operation (Sham) or bilateral ovariectomy was performed as described previously.^{10–12} Then, ovariectomized rats were randomized to receive either subcutaneous implantation of a 17 β -estradiol pellet (60-day release pellet containing 500 μ g, Innovative Research of America, Sarasota, FL, USA) (OxE group) or a placebo pellet (OxP group).^{8,10,11} Successful ovariectomy was confirmed by measurements of serum 17 β -estradiol levels and visible atrophy of the uterus when rats were sacrificed.

2.1 Langendorff perfusion of the hearts

Four weeks after the operation, the hearts were quickly excised under anaesthesia and perfused with modified Krebs-Henseleit buffer according to the Langendorff procedure. A plastic catheter with a latex balloon was inserted into the left ventricle (LV) through the left atrium, and the LV end-diastolic pressure was adjusted to 10 mmHg by filling the balloon with water, as described previously.^{13,14} The hearts were paced at 5 Hz while the LV pressure was measured and pacing was turned off, and the balloon was deflated during global ischaemia and reperfusion.

A total of 16 rats from each group were assigned to two subgroups: IPC(+) and IPC(–). After a 10 min initial wash-out perfusion in a non-recirculating mode, the isolated rat hearts were perfused with Krebs-Heinseleit buffer in a recirculating mode. In the IPC(–) group, after initial recirculating perfusion for 40 min, the hearts were subjected to 30 min of global ischaemia, followed by 120 min of reperfusion. In the IPC(+) group, after 10 min of initial perfusion, IPC was induced by three cycles of 5 min ischaemia/5 min reperfusion, followed by 30 min of global ischaemia/120 min reperfusion. Infarct size (% of LV) was quantitated as described

previously.¹⁵ The perfusate was collected during reperfusion, and total lactate dehydrogenase (LDH) and creatine kinase (CK) activity released into the perfusate was measured by standard enzymatic methods and expressed as IU/g wet weight of the ventricle.^{13,14}

2.2 Measurement of serum parameters

Serum fasting glucose, total cholesterol, high-density lipoprotein (HDL)-cholesterol, triglycerides, and free fatty acid (FFA) levels were measured by standard enzymatic methods. Serum β -estradiol levels were measured by using commercially available ELISA kits.

2.3 Tissue sample preparation

Before the induction of sustained ischaemia, five hearts from each group were harvested quickly for western immunoblotting and measurement of PKC activity. For western immunoblotting of PKC δ and ϵ , cytosolic, nuclear, and membranous fractions were prepared as described previously.¹⁶ For measurement of PKC activity and for western immunoblotting of phosphorylated PKC ϵ and phosphorylated phosphoinositide-dependent kinase 1 (PDK1), cytosolic and membranous fractions were prepared as described previously.^{15,17}

2.4 Measurement of protein kinase C activity

Total PKC activity in the cytosolic and membranous fractions was measured by using a PKC enzyme assay kit (Amersham Bioscience, Buckinghamshire, UK) and [γ -³²P] ATP, according to the manufacturer's instructions.

2.5 Western immunoblotting

Standard sodium dodecyl sulphate-polyacrylamide gel electrophoresis western immunoblotting techniques were used to assess the protein levels of PKC δ , PKC ϵ , PDK1, the phosphorylated form of PKC ϵ , and the phosphorylated form of PDK1, as described previously.^{13,15,17} Initially, specific antibodies recognizing the phosphorylated form of PKC ϵ or PDK1 were used; the membranes were then stripped and reprobed with standard PKC ϵ or PDK1 antibodies recognizing both phosphorylated and non-phosphorylated forms in order to normalize the protein levels of the phosphorylated form. The total protein contents of PKC δ , PKC ϵ , and PDK1 were expressed as a percentage of the corresponding value in the Sham IPC(–) group. Polyclonal antibodies against PKC δ , PKC ϵ , and phosphorylated PKC ϵ at the Ser⁷²⁹ residue (p-Ser⁷²⁹ PKC ϵ) were purchased from Santa Cruz Biotechnology, Inc. (Santa Cruz, CA, USA) and polyclonal antibodies against PDK1 and phosphorylated PDK1 at the Ser²⁴¹ residue (p-Ser²⁴¹ PDK1) from Cell Signalling Technology, Inc. (Beverly, MA, USA).

2.6 Effect of protein kinase C activators

Forty-two rats from the Sham and the Ox groups were assigned to three subgroups. After initial perfusion in a recirculating mode for 10 min, the perfusate was switched to the modified K-H buffer containing one of the following drugs: 1,2-dioctanoly *sn*-glycerol (DOG; Sigma Chemical, St Louis, MO, USA) (10 μ M), Ψ - ϵ RACK (KAE1-1; Kai Pharmaceuticals, South San Francisco, CA, USA) (200 nM), or C1 (control peptide; Kai Pharmaceuticals) (200 nM) ($n = 7$, each). After 10 min, the perfusate was switched back to the normal buffer, and then the hearts were perfused in a non-recirculating mode for 10 min to wash out each drug. All the hearts were then subjected to 30 min of global ischaemia/120 min of reperfusion. The dose of DOG used in this study has previously been shown to attenuate myocardial I/R injury without changes in the heart rate or LV pressure in isolated perfused male rat hearts.^{16,18} DOG was dissolved in dimethyl sulfoxide (DMSO) and the final concentration of DMSO was 0.02%. Inagaki *et al.*¹⁹ have reported that pre-treatment with 500 nM of Ψ - ϵ RACK attenuated myocardial I/R injury without affecting the heart rate or LV pressure in isolated perfused male

rat hearts. However, Ψ - ϵ RACK at a concentration of 500 nM had a positive inotropic effect in our model (data not shown); therefore, we used 200 nM Ψ - ϵ RACK. Immediately before use, Ψ - ϵ RACK and C1 were directly dissolved in the Krebs–Henseleit buffer.

2.7 Effect of the phosphatidylinositol-3 (PI3)-kinase inhibitor

Five hearts in the Sham and OxP groups underwent initial perfusion in a recirculating mode for 10 min, following which the perfusate was switched to the modified Krebs–Henseleit buffer containing wortmannin (Wako Pure Chemical, Osaka, Japan) (100 nM).¹⁸ After 10 min, the hearts were subjected to the IPC protocol (3 × 5 min ischaemia/5 min reperfusion) and immediately harvested for western immunoblotting of PKC ϵ . Wortmannin was dissolved in DMSO and the final concentration of DMSO was 0.02%.

2.8 Statistical analyses

Data are reported as the mean \pm SEM. For intragroup comparisons, haemodynamic variables were analysed by a two-way analysis of variance (ANOVA) (time and group), followed by a Scheffe's *post hoc* test. For intergroup comparisons, data were analysed by a one-way ANOVA, followed by a Scheffe's *post hoc* test. The *P*-value of less than 0.05 was defined as statistically significant. Statistical analyses were performed using Stat-View 5.0 software (SAS Institute, Cary, NC, USA) for Windows.

3. Results

Body weight and total ventricular weight increased significantly in the OxP group. However, the ratio of ventricular weight to body weight in the OxP group was lower than that in the Sham group (Table 1). Oestrogen replacement restored these values to the levels seen in the Sham group. Serum estradiol levels decreased significantly in the OxP group, but did not become zero (Table 1), because the adrenal glands also produce small amount of sex hormones. The average levels of serum estradiol in the OxE group were 2.5-fold higher than those in the Sham group but were still in the physiological range. Serum total cholesterol levels were higher and serum FFA levels were lower in the OxP group compared with the Sham group (Table 1). Oestrogen replacement restored serum FFA levels and increased serum HDL-cholesterol levels.

Left ventricular function at baseline did not differ among the three groups (Table 2). In the absence of IPC, infarct size did not differ among the three groups, although infarct size in the OxE group tended to be smaller than that in the OxP group ($0.1 < P < 0.05$) (Figure 1A). Ischaemic preconditioning significantly reduced infarct size and total CK and LDH release into the perfusate during reperfusion in the Sham and OxE groups (Figure 1A, B and C). However, in the OxP group, IPC failed to reduce infarct size and total CK and LDH release.

Pre-treatment with DOG, Ψ - ϵ RACK, or C1 did not affect the LV function in any group (Table 2). Pre-treatment with Ψ - ϵ RACK significantly reduced infarct size in both groups (Figure 1A). In contrast, a favourable effect of DOG on infarct size was observed only in the Sham group. Pre-treatment with C1 did not affect the infarct size in either group. In the Sham group, both DOG and Ψ - ϵ RACK attenuated total CK and LDH release into the perfusate during reperfusion, whereas C1 had no effect (Figure 1B and C). In the OxP group, however, total CK and LDH release into the perfusate was reduced by Ψ - ϵ RACK, not by the DOG.

There was no difference in the total PKC activity among groups (Figure 2A). In the absence of IPC, the ratio of PKC activity in the membranous fraction to total activity was lower in the OxP group compared with the Sham group. Ischaemic preconditioning increased the ratio of PKC activity in the membranous fraction to the total PKC activity in all groups, and there was no difference among groups (Figure 2B). The protein levels and the distribution of PKC δ and PKC ϵ did not differ among the three groups without IPC (data not shown). Ischaemic preconditioning translocated PKC δ to the membranous fraction in all groups (Figure 3A). Ischaemic preconditioning translocated PKC ϵ to the membranous fraction in the Sham and OxE groups, but not in the OxP group (Figure 3B).

Ischaemic preconditioning increased p-Ser⁷²⁹ PKC ϵ in the cytosolic fraction in all groups, but the increase in the OxP group was significantly less than that in the Sham group (Figure 4A). In contrast, the levels of p-Ser⁷²⁹ PKC ϵ in the membranous fraction did not differ between the preconditioned and non-preconditioned rats in each group. In the absence of IPC, the protein levels and the distribution of PDK1 did not differ among the three groups (data not

Table 1 Body weight, total ventricular weight, and serum parameters

	Sham	OxP	OxE
	(n = 16)	(n = 16)	(n = 16)
Body weight (g)	305 \pm 1	364 \pm 1*	294 \pm 3**
Total ventricular weight (g)	1.23 \pm 0.01	1.36 \pm 0.01*	1.17 \pm 0.03**
Total ventricular weight/body weight (%)	0.41 \pm 0.01	0.37 \pm 0.01*	0.40 \pm 0.03**
Serum parameters	(n = 8)	(n = 8)	(n = 8)
Fasting blood sugar (mg/dL)	143 \pm 15	147 \pm 20	138 \pm 16
Total cholesterol (mg/dL)	89 \pm 7	102 \pm 5*	98 \pm 7
HDL-cholesterol (mg/dL)	26 \pm 2	28 \pm 1	30 \pm 2*
Triglycerides (mg/dL)	10.3 \pm 0.6	9.2 \pm 0.9	9.4 \pm 1.2
Free fatty acids (μ Eq/L)	604 \pm 52	518 \pm 61*	625 \pm 56**
	(n = 16)	(n = 16)	(n = 16)
Serum estradiol levels (pg/mL)	25.4 \pm 1.4	6.0 \pm 0.2*	63.0 \pm 4.0***

Sham, Sham-operation group; OxP, bilateral ovariectomy plus placebo pellet implantation group; OxE, bilateral ovariectomy plus 17 β -estradiol pellet implantation group; HDL, high-density lipoprotein; **P* < 0.05 vs. the Sham group, ***P* < 0.05 vs. the OxP group.

Table 2 Cardiac parameters in each group

Parameter	Baseline					After treatment		
	LVSP (mmHg)	LVEDP (mmHg)	LVDP (mmHg)	+dP/dt	-dP/dt	LVSP (mmHg)	LVEDP (mmHg)	LVDP (mmHg)
Sham								
IPC(-) (n = 8)	91 ± 7	10.1 ± 0.1	80 ± 8	2480 ± 130	1510 ± 90			
IPC(+) (n = 8)	86 ± 3	10.1 ± 0.3	75 ± 3	2470 ± 110	1490 ± 80			
Sham IPC(-)								
+DOG (n = 7)	90 ± 7	10.3 ± 0.3	80 ± 7	2390 ± 120	1450 ± 80	85 ± 6	10.5 ± 0.3	74 ± 6 (93 ± 4)
+C1 (n = 7)	91 ± 8	10.5 ± 0.3	81 ± 8	2480 ± 140	1500 ± 90	95 ± 5	10.5 ± 0.4	84 ± 5 (104 ± 4)
+ψ-εRACK (n = 7)	89 ± 5	10.3 ± 0.3	79 ± 5	2420 ± 110	1480 ± 70	93 ± 5	10.6 ± 0.6	82 ± 5 (105 ± 5)
OxP								
IPC(-) (n = 8)	86 ± 6	10.3 ± 0.3	76 ± 6	2350 ± 120	1440 ± 80			
IPC(+) (n = 8)	87 ± 3	10.5 ± 0.1	77 ± 3	2410 ± 100	1480 ± 70			
OxP IPC(-)								
+DOG (n = 7)	85 ± 4	10.3 ± 0.4	75 ± 4	2390 ± 120	1450 ± 90	82 ± 4	10.6 ± 0.4	71 ± 4 (96 ± 3)
+C1 (n = 7)	86 ± 4	10.5 ± 0.2	75 ± 4	2420 ± 110	1480 ± 80	86 ± 5	10.6 ± 0.2	75 ± 5 (100 ± 4)
+ψ-εRACK (n = 7)	90 ± 3	10.5 ± 0.3	79 ± 3	2380 ± 90	1440 ± 70	91 ± 5	10.5 ± 0.3	81 ± 5 (103 ± 8)
OxE								
IPC(-) (n = 8)	92 ± 7	9.9 ± 0.1	82 ± 6	2510 ± 110	1610 ± 90			
IPC(+) (n = 8)	94 ± 6	10.0 ± 0.3	84 ± 7	2530 ± 100	1620 ± 90			

LVSP, left ventricular systolic pressure; LVEDP, left ventricular end-diastolic pressure; LVDP, left ventricular developed pressure; +dP/dt, peak positive dP/dt; -dP/dt, peak negative dP/dt; data in parentheses, percentage change of corresponding value at baseline.

shown); furthermore, without IPC, the ratio of p-Se²⁴¹ PDK1 to total PDK1 was higher in the OxE group when compared with the Sham group (Figure 4B). Ischaemic preconditioning increased p-Se²⁴¹ PDK1 in the cytosolic fraction in the Sham and OxE groups, but not in the OxP group.

In the Sham group, treatment with wortmannin prior to IPC abrogated PKC ϵ translocation to the membranous fraction following IPC (Figure 5A). Treatment with wortmannin prior to IPC also abrogated the increase in p-Ser⁷²⁹ PKC ϵ in the cytosolic fraction following IPC in the Sham group (Figure 5B). No further changes in the distribution or phosphorylation of PKC ϵ were observed in the OxP group treated with wortmannin (data not shown).

4. Discussion

This study provides several major new findings. Our data demonstrate that, in female hearts with chronic oestrogen withdrawal, (i) the cardioprotective effects of IPC are abrogated; (ii) IPC fails to translocate PKC ϵ to the membranous fraction; (iii) the IPC-induced phosphorylation of PKC ϵ at the Ser⁷²⁹ residue is impaired; (iv) oestrogen replacement restores the IPC effect, as well as the translocation and phosphorylation of PKC ϵ ; and (v) pre-treatment with a selective activator of PKC ϵ -mediated signalling, but not with a non-selective PKC activator, also rescues the phenotype and successfully mimics the salubrious effects of IPC. In addition, our data demonstrate that in the female heart, PI3-kinase-mediated signalling is located upstream of the activation of PKC ϵ during the development of IPC. Our findings imply that the mechanism responsible for the loss of IPC in ovariectomized rats is at the level of PKC ϵ or proximal to it, and that the downstream signalling pathways involved in the IPC are intact and can be effectively mobilized.

Although in the present study, chronic oestrogen withdrawal did not affect myocardial I/R injury in the non-preconditioned state; the results of previous studies of this issue have been controversial.⁸⁻¹² Likewise, the data regarding whether chronic oestrogen depletion interferes with the development of IPC have not been entirely consistent.²⁰⁻²² The apparent discrepancy in the previous reports might be due, at least in part, to different experimental models (*in vivo* vs. *ex vivo*), different I/R or IPC protocols, different parameters used to assess myocardial damage, and, possibly, species differences. Song *et al.*²² demonstrated that chronic oestrogen withdrawal by ovariectomy increased infarct size and exacerbated the recovery of the LV function after I/R in isolated female mouse hearts. They further indicated that gonadectomy impaired the development of IPC in both male and female mice. Peng *et al.* reported that ovariectomy did not affect the recovery of the LV function after I/R in isolated perfused rat hearts; however, the effect of IPC on the recovery of the LV function was less in ovariectomized rats than in Sham-operated rats.²⁰ Sbarouni *et al.*²¹ demonstrated that in an *in vivo* rabbit model, ovariectomy did not affect infarct size either in the absence or in the presence of IPC. However, ovariectomized rabbits showed considerable variability in infarct size and the effect of IPC on infarct size tended to be attenuated when compared with intact rabbits (infarct size: intact rabbits, 0.144 ± 0.021 cm³ vs. ovariectomized rabbits, 0.249 ± 0.028 cm³; $n = 6$ each), although the difference was not statistically significant.²¹ Together, these reports support the concept that the IPC effect is, in some way, impaired in female hearts with chronic oestrogen withdrawal; however, they do not provide mechanistic insights into how chronic oestrogen withdrawal impairs the IPC effect.

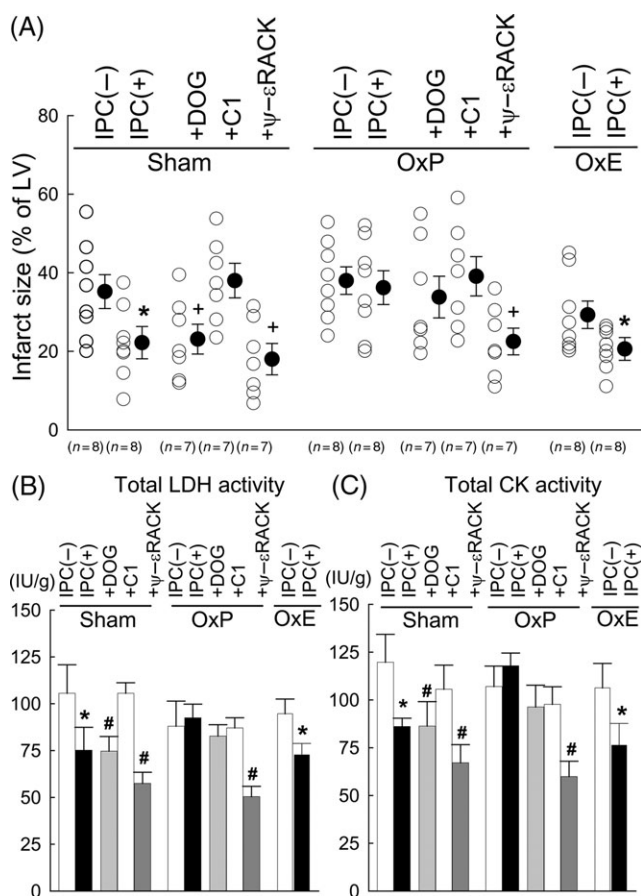


Figure 1 The effect of ischaemic preconditioning, direct protein kinase C activation by 1,2-dioctanoly *sn*-glycerol, ψ - ϵ RACK (KAE1-1), or control peptide (C1) on infarct size in each group. (A) Infarct size. (B) Total lactate dehydrogenase activity released into the perfusate during reperfusion. (C) Total creatine kinase activity released into the perfusate during reperfusion. Data are represented as the mean \pm SEM. * $P < 0.05$ vs. the corresponding IPC(-) group, + $P < 0.05$ vs. the corresponding +C1 group.

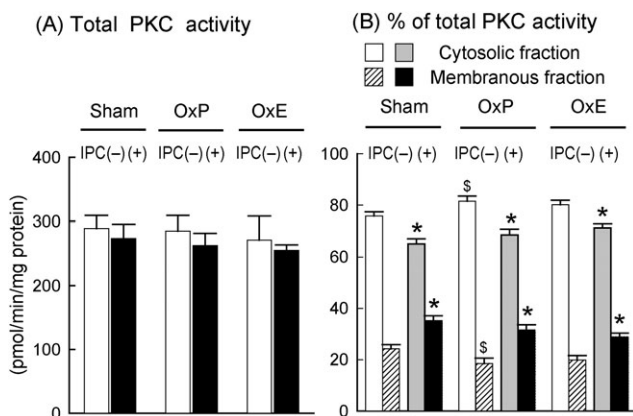


Figure 2 Protein kinase C activity. (A) Total protein kinase C activity. (B) Percentage of protein kinase C activity in the membranous or cytosolic fraction as a fraction of the total protein kinase C activity. Data are represented as the mean \pm SEM. * $P < 0.05$ vs. the corresponding IPC(-) group, # $P < 0.05$ vs. the corresponding Sham group.

In the absence of IPC, infarct size in ovariectomized rats implanted with 17 β -estradiol pellets tended to be smaller than that in ovariectomized rats implanted with placebo pellets (Figure 1). This finding may support the previous

reports that exogenous 17 β -estradiol administration, in itself, exerts the cardioprotective effect.^{8,10} However, the evidence that chronic oestrogen replacement interferes with myocardial ischaemic/reperfusion injury has not been entirely consistent. As expected, oestrogen replacement successfully restored the IPC effect in the ovariectomized rat heart (Figure 1).

Protein kinase C plays a key role in the IPC signalling cascade in cardiomyocytes.^{6,7,23,24} Among the various isoforms of PKC, PKC α , δ , and ϵ have been reported to be translocated to the membranous fraction by IPC in young male rat hearts.²⁵ We previously demonstrated that the IPC effect is lost in middle-aged male rat hearts.¹⁴ Additionally, Tani *et al.*¹⁶ have demonstrated that IPC failed to translocate both PKC δ and ϵ to the membranous fraction in middle-aged male rat hearts. Accordingly, we first investigated the intracellular distribution of PKC δ and ϵ before and after IPC. In contrast to middle-aged male hearts, IPC translocated PKC δ to the membranous fraction but failed to translocate PKC ϵ to the membranous fraction in female hearts with chronic oestrogen withdrawal.

We do not have direct evidence that, in the pre-conditioned myocardium, PKC and PDK1 translocated instead of pre-existing PKC and PDK1 being degraded in one location and synthesized and accumulated in another location. However, the rapidity of the changes in the subcellular distribution of PKC and PDK1 after IPC (observed within 30 min) makes it unlikely that they reflected *de novo* synthesis of those proteins. Mounting evidence also supports the concept that PKC and other proteins translocate in pre-conditioned myocardium.^{7,17,23} Thus, the most plausible interpretation of our observations is that a relatively small amount of PKC and PDK1 translocate after IPC, but this small change is essential for the development of the IPC effect.

Several possibilities might explain the impairment in PKC ϵ translocation in the OxP group. We examined the phosphorylated state of PKC ϵ before and after IPC because recent investigations demonstrated that phosphorylation of the three residues located in the kinase domain is essential for activation and translocation of novel PKC isoforms in various cell types.²⁶⁻²⁹ The phosphorylation of the Thr⁵⁶⁶ residue located in the activation loop leads to the autophosphorylation of the Thr⁷¹⁰ residue at the turn motif.^{26,28} The Ser⁷²⁹ residue in the hydrophobic motif at the C-terminus may then be autophosphorylated^{26,28} or it may be phosphorylated by an autologous kinase controlled by mTOR,³⁰ thus making PKC ϵ ready for translocation. Accordingly, the impaired p-Ser⁷²⁹ PKC ϵ observed in our study (Figure 4A) suggests a decrease in the capacity of PKC ϵ for translocation to the membranous fraction. In fact, Xu *et al.*³¹ have demonstrated that phosphorylation of the Ser⁷²⁹ residue is required for the determination of the intracellular localization of PKC ϵ and for its interaction with target proteins in 3T3 fibroblasts.

In cardiomyocytes, the exact mechanism whereby the three residues in the kinase domain of PKC ϵ are phosphorylated remains unsolved. Rybin *et al.*³² reported that in neonatal cardiomyocytes, the Ser⁷²⁹ residue of PKC ϵ is phosphorylated by PKC δ and, in turn, the Thr⁵⁰⁵ residue of PKC δ is phosphorylated by PKC ϵ . Whether this concept can be applied to adult female hearts is unclear because of the differences in the expression levels of novel PKC isoforms

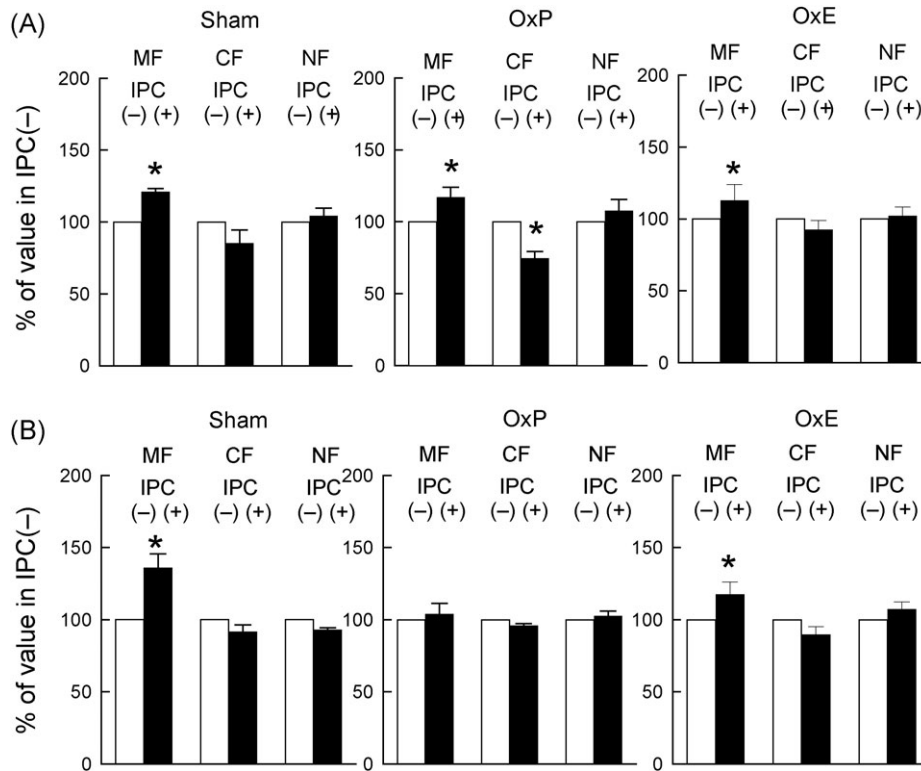


Figure 3 Western immunoblotting for protein kinase C δ and ϵ . (A) Densitometric analysis of protein kinase C δ in the membranous (MF), cytosolic (CF), and nuclear fractions (NF). (B) Densitometric analysis of protein kinase C ϵ in MF, CF, and NF. The densitometric measurements of protein kinase C are normalized to the total protein detected and expressed as a percentage of the average values measured in the Sham IPC(-) group. Data are represented as the mean \pm SEM. * $P < 0.05$ vs. the corresponding IPC(-) group, $^{\$}P < 0.05$ vs. the corresponding Sham group.

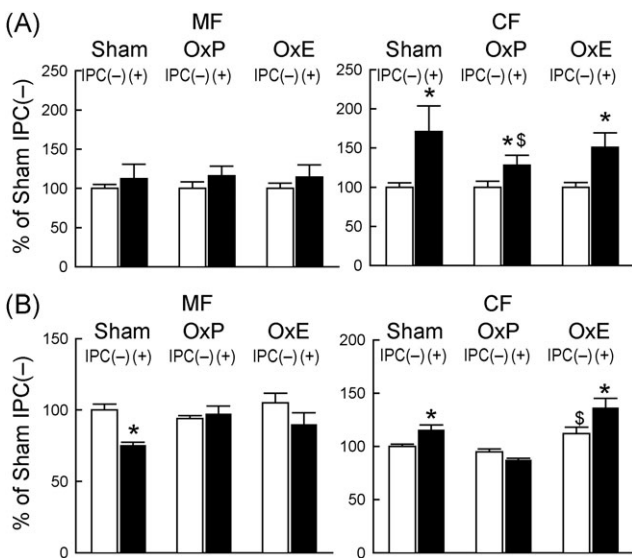


Figure 4 Western immunoblotting for phosphorylated forms of protein kinase C ϵ and phosphoinositide-dependent kinase 1. (A) Densitometric analysis of phosphorylated protein kinase C ϵ at the Ser⁷²⁹ residue in the membranous (MF) and the cytosolic fractions (CF). (B) Densitometric analysis of phosphorylated phosphoinositide-dependent kinase 1 at the Ser²⁴¹ residue in MF and CF. The densitometric measurements of phosphorylated proteins are normalized to the total protein detected and expressed as a percentage of the average values measured in the Sham IPC(-) group. Data are represented as the mean \pm SEM. * $P < 0.05$ vs. the corresponding IPC(-) group, $^{\$}P < 0.05$ vs. the corresponding Sham group.

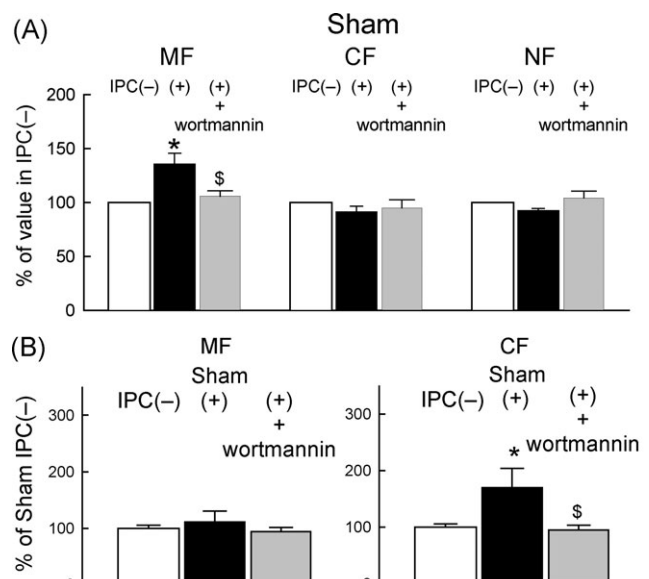


Figure 5 Effect of the PI3-kinase inhibitor (wortmannin) on the translocation and the phosphorylation of protein kinase C ϵ after IPC in the Sham group. (A) Densitometric analysis of protein kinase C ϵ in MF, CF, and NF. (B) Densitometric analysis of p-Ser⁷²⁹ protein kinase C ϵ in MF and CF. Data are represented as the mean \pm SEM. * $P < 0.05$ vs. the corresponding IPC(-) group, $^{\$}P < 0.05$ vs. the corresponding Sham group.

between immature and mature cardiomyocytes.³³ Although most data have been obtained in 3T3 fibroblasts rather than in cardiomyocytes, increasing evidence demonstrates

that PDK1 is the upstream kinase that directly phosphorylates the active loop of PKC ϵ .²⁷⁻²⁹ PDK1 is bound to and activated by lipid metabolites that are produced by PI3-kinase. PDK1 phosphorylated at the Ser²⁴¹ residue (an

active form of PDK1) translocates to the cytosolic fraction to mediate further signalling pathways.^{28,34} Tong *et al.*¹⁸ demonstrated that IPC induced phosphorylation of Akt/PKB and translocation of PKC ϵ and, in male rat hearts, a PI3-kinase inhibitor blocked these effects of IPC. They also found that a PI3-kinase inhibitor abrogated the cardioprotective effect of IPC but did not completely eliminate the effect of direct PKC activation by DOG. They concluded that in male hearts, IPC activates PI3-kinase upstream of PKC ϵ . In the present study, IPC failed to translocate the p-Ser²⁴¹ PDK1 to the cytosolic fraction in female hearts with chronic oestrogen withdrawal (*Figure 4B*). In addition, administration of a PI3-kinase inhibitor prior to IPC abrogated the translocation of PKC ϵ to the membranous fraction and attenuated the p-Ser⁷²⁹ PKC ϵ in intact female hearts in analogy with the effects observed in female hearts with chronic oestrogen withdrawal (*Figure 5*). Our finding that the effect of non-selective PKC activation by DOG was insufficient in female hearts with chronic oestrogen withdrawal (*Table 2* and *Figure 2*) would not contradict the findings of Tong *et al.*,¹⁸ if PI3-kinase-mediated signalling is impaired in the ovariectomized rat heart. Mounting evidence indicates that activation of oestrogen receptors directly modulates PI3-kinase/PDK/Akt signalling in cardiomyocytes.^{35,36} Therefore, it is plausible that chronic oestrogen withdrawal may cause dysfunction of PKC ϵ via impaired PI3-kinase/PDK/Akt signalling. In the absence of IPC, the ratio of p-Ser²⁴¹ PDK1 to total PDK1 in the cytosolic fractions in the OxE group was higher than that in the Sham group (*Figure 4B*), suggesting that oestrogen replacement affects PI3-kinase/PDK/Akt signalling. Activation of PI3-kinase/PDK/Akt signalling might be responsible for the attenuation of myocardial I/R injury in the OxE group without IPC. As expected, oestrogen replacement completely restored the translocation and phosphorylation of PKC ϵ after IPC in the ovariectomized rat heart (*Figures 3B* and *4A*).

We did not evaluate the phosphorylated state of PKC ϵ at the Thr⁵⁶⁶ residue, which is directly phosphorylated by PDK1,^{26,28,29} because a specific antibody is not available. Thus, there is still no direct evidence that impaired PI3-kinase/PDK/Akt signalling in female hearts with chronic oestrogen depletion contributes to the loss of PKC ϵ translocation. The Thr⁵⁰⁵ residue located in the activation loop of PKC δ is also phosphorylated by PDK1.^{26,28,29} However, in the present study, translocation of PKC δ to the membranous fraction was preserved in female hearts with chronic oestrogen depletion. Recent investigations suggest that unlike PKC ϵ , phosphorylation of PKC δ appears to be dispensable.²⁹ The difference between the activation mechanisms of PKC δ and PKC ϵ might explain the discrepancy in the subcellular trafficking of PKC after IPC in the present study. Further investigations are required to establish the interaction between PDK1 and PKC ϵ in cardiomyocytes.

In summary, we have demonstrated that the cardioprotective effect of IPC is lost in female hearts with chronic oestrogen depletion and that this phenomenon is caused, at least in part, by impaired phosphorylation of PKC ϵ at the Ser⁷²⁹ residue and loss of PKC ϵ translocation following IPC. We have also demonstrated that not only oestrogen replacement but also selective activation of PKC ϵ -mediated signalling can fully restore a protective phenotype analogous to that conferred by IPC. The latter finding indicates that the cellular defect caused by oestrogen withdrawal is at the

level of PKC ϵ or proximal to it, and that the distal cardioprotective machinery is intact and can be effectively recruited by appropriate interventions. Our results suggest that direct activation of PKC ϵ -mediated signalling is a potential strategy for restoring protection against ischaemia in female hearts with chronic oestrogen depletion that might be more efficacious than HRT.

Acknowledgements

The authors thank Daria Mochly-Rosen for her kind co-operation in obtaining the PKC modulating peptide.

Conflict of interest: none declared.

Funding

This study was supported in part by the Vehicle Racing Commemorative Foundation (2004–2006); by the Nateglinide Memorial Toyoshima Research and Education Fund (2007); by the Medical Research Grant Programme of Keio Health Consulting Centre (2002–2003) (to K.S.); and by NIH grants HL-55757, HL-68088, HL-70897, and HL-78825 (to R.B.).

References

- Kannel WB, Hjortland MC, McNamara PM, Gordon T. Menopause and risk of cardiovascular disease: the Framingham study. *Ann Intern Med* 1976; **85**:447–452.
- Oe K, Shimizu M, Ino H, Yamaguchi M, Terai H, Hayashi K *et al.* Effects of gender on the number of diseased vessels and clinical outcome in Japanese patients with acute coronary syndrome. *Circ J* 2002; **66**: 435–440.
- Grady D, Herrington D, Bittner V, Blumenthal R, Davidson M, Hlatky M *et al.* Cardiovascular disease outcomes during 6.8 years of hormone therapy: Heart and Estrogen/progestin Replacement Study follow-up (HERS II). *JAMA* 2002; **288**:49–57.
- Pradhan AD, Manson JE, Rossouw JE, Siscovick DS, Mouton CP, Rifai N *et al.* Inflammatory biomarkers, hormone replacement therapy, and incident coronary heart disease: prospective analysis from the Women's Health Initiative observational study. *JAMA* 2002; **288**:980–987.
- Mosca L, Appel LJ, Benjamin EJ, Berra K, Chandra-Strobo N, Fabunmi RP *et al.* Evidence-based guidelines for cardiovascular disease prevention in women. American Heart Association scientific statement. *Arterioscler Thromb Vasc Biol* 2004; **24**:e29–e50.
- Bolli R. The late phase of preconditioning. *Circ Res* 2000; **87**:972–983.
- Yellon DM, Downey JM. Preconditioning the myocardium: from cellular physiology to clinical cardiology. *Physiol Rev* 2003; **83**:1113–1151.
- Beer S, Reincke M, Kral M, Lie SZ, Steinhauer S, Schmidt HH *et al.* Susceptibility to cardiac ischemia/reperfusion injury is modulated by chronic estrogen status. *J Cardiovasc Pharmacol* 2002; **40**:420–428.
- Hunter JC, Kostyak JC, Novotny JL, Simpson AM, Korczyk DH. Estrogen deficiency decreases ischemic tolerance in the aged rat heart: roles of PKCdelta, PKCepsilon, Akt, and GSK3beta. *Am J Physiol Regul Integr Comp Physiol* 2007; **292**:R800–R809.
- Kolodgie FD, Farb A, Litovsky SH, Narula J, Jeffers LA, Lee SJ *et al.* Myocardial protection of contractile function after global ischemia by physiologic estrogen replacement in the ovariectomized rat. *J Mol Cell Cardiol* 1997; **29**:2403–2414.
- McNulty PH, Jagasia D, Whiting JM, Caulin-Glaser T. Effect of 6-week estrogen withdrawal or replacement on myocardial ischemic tolerance in rats. *Am J Physiol Heart Circ Physiol* 2000; **278**:H1030–H1034.
- Zhai P, Eurell TE, Cotthaus R, Jeffery EH, Bahr JM, Gross DR. Effect of estrogen on global myocardial ischemia-reperfusion injury in female rats. *Am J Physiol Heart Circ Physiol* 2000; **279**:H2766–H2775.
- Shinmura K, Tamaki K, Bolli R. Short-term caloric restriction improves ischemic tolerance independent of opening of ATP-sensitive K⁺ channels in both young and aged hearts. *J Mol Cell Cardiol* 2005; **39**:285–296.
- Tani M, Suganuma Y, Hasegawa H, Shinmura K, Hayashi Y, Guo X *et al.* Changes in ischemic tolerance and effects of ischemic preconditioning in middle-aged rat hearts. *Circulation* 1997; **95**:2559–2566.

15. Shinmura K, Tang XL, Wang Y, Xuan YT, Liu SQ, Takano H *et al.* Cyclooxygenase-2 mediates the cardioprotective effects of the late phase of ischemic preconditioning in conscious rabbits. *Proc Natl Acad Sci USA* 2000;**97**:10197–10202.
16. Tani M, Honma Y, Hasegawa H, Tamaki K. Direct activation of mitochondrial K(ATP) channels mimics preconditioning but protein kinase C activation is less effective in middle-aged rat hearts. *Cardiovasc Res* 2001;**49**:56–68.
17. Ping P, Takano H, Zhang J, Tang XL, Qiu Y, Li RC *et al.* Isoform-selective activation of protein kinase C by nitric oxide in the heart of conscious rabbits: a signaling mechanism for both nitric oxide-induced and ischemia-induced preconditioning. *Circ Res* 1999;**84**:587–604.
18. Tong H, Chen W, Steenbergen C, Murphy E. Ischemic preconditioning activates phosphatidylinositol-3-kinase upstream of protein kinase C. *Circ Res* 2000;**87**:309–315.
19. Inagaki K, Hahn HS, Dorn GW 2nd, Mochly-Rosen D. Additive protection of the ischemic heart *ex vivo* by combined treatment with delta-protein kinase C inhibitor and epsilon-protein kinase C activator. *Circulation* 2003;**108**:869–875.
20. Peng WJ, Yu J, Deng S, Jiang JL, Deng HW, Li YJ. Effect of estrogen replacement treatment on ischemic preconditioning in isolated rat hearts. *Can J Physiol Pharmacol* 2004;**82**:339–344.
21. Sbarouni E, Iliodromitis EK, Zoga A, Vlachou G, Andreadou I, Kremastinos DT. The effect of the phytoestrogen genistein on myocardial protection, preconditioning and oxidative stress. *Cardiovasc Drugs Ther* 2006;**20**:253–258.
22. Song X, Li G, Vaage J, Valen G. Effects of sex, gonadectomy, and oestrogen substitution on ischaemic preconditioning and ischaemia-reperfusion injury in mice. *Acta Physiol Scand* 2003;**177**:459–466.
23. Baines CP, Pass JM, Ping P. Protein kinases and kinase-modulated effectors in the late phase of ischemic preconditioning. *Basic Res Cardiol* 2001;**96**:207–218.
24. Cohen MV, Baines CP, Downey JM. Ischemic preconditioning: from adenosine receptor to KATP channel. *Annu Rev Physiol* 2000;**62**:79–109.
25. Kawamura S, Yoshida K, Miura T, Mizukami Y, Matsuzaki M. Ischemic preconditioning translocates PKC-delta and -epsilon, which mediate functional protection in isolated rat heart. *Am J Physiol* 1998;**275**:H2266–H2271.
26. Cenni V, Doppler H, Sonnenburg ED, Maraldi N, Newton AC, Toker A. Regulation of novel protein kinase C epsilon by phosphorylation. *Biochem J* 2002;**363**:537–545.
27. England K, Rumsby MG. Changes in protein kinase C epsilon phosphorylation status and intracellular localization as 3T3 and 3T6 fibroblasts grow to confluency and quiescence: a role for phosphorylation at ser-729? *Biochem J* 2000;**352**:19–26.
28. Newton AC. Regulation of the ABC kinases by phosphorylation: protein kinase C as a paradigm. *Biochem J* 2003;**370**:361–371.
29. Perletti G, Terrian DM. Distinctive cellular roles for novel protein kinase C isoenzymes. *Curr Pharm Des* 2006;**12**:3117–3133.
30. Parekh D, Ziegler W, Yonezawa K, Hara K, Parker PJ. Mammalian TOR controls one of two kinase pathways acting upon nPKCdelta and nPKCepsilon. *J Biol Chem* 1999;**274**:34758–34764.
31. Xu TR, He G, Dobson K, England K, Rumsby M. Phosphorylation at Ser729 specifies a Golgi localisation for protein kinase C epsilon (PKCepsilon) in 3T3 fibroblasts. *Cell Signal* 2007;**19**:1986–1995.
32. Rybin VO, Sabri A, Short J, Braz JC, Molkentin JD, Steinberg SF. Cross-regulation of novel protein kinase C (PKC) isoform function in cardiomyocytes. Role of PKC epsilon in activation loop phosphorylations and PKC delta in hydrophobic motif phosphorylations. *J Biol Chem* 2003;**278**:14555–14564.
33. Rybin VO, Steinberg SF. Protein kinase C isoform expression and regulation in the developing rat heart. *Circ Res* 1994;**74**:299–309.
34. Biondi RM. Phosphoinositide-dependent protein kinase 1, a sensor of protein conformation. *Trends Biochem Sci* 2004;**29**:136–142.
35. Patten RD, Karas RH. Estrogen replacement and cardiomyocyte protection. *Trends Cardiovasc Med* 2006;**16**:69–75.
36. Urata Y, Ihara Y, Murata H, Goto S, Koji T, Yodoi J *et al.* 17Beta-estradiol protects against oxidative stress-induced cell death through the glutathione/glutaredoxin-dependent redox regulation of Akt in myocardial H9c2 cells. *J Biol Chem* 2006;**281**:13092–13102.