



Inflammation induced by lipopolysaccharide advanced androgen receptor expression and epithelial-mesenchymal transition progress in prostatitis and prostate cancer

Guang-Chun Wang^{1#}, Tian-Run Huang^{1,2#}, Ke-Yi Wang^{1#}, Zong-Lin Wu¹, Jin-Bo Xie¹, Hou-Liang Zhang¹, Lei Yin¹, Wen-Long Tang³, Bo Peng¹

¹Department of Urology, Shanghai Tenth People's Hospital, Tongji University School of Medicine, Shanghai, China; ²Department of Urology, Shanghai Traditional Chinese Medicine Hospital, Shanghai University of Traditional Chinese Medicine, Shanghai, China; ³Department of Urology, People's Hospital of Lincang, Lincang, China

Contributions: (I) Conception and design: GC Wang, TR Huang; (II) Administrative support: WL Tang, B Peng; (III) Provision of study materials or patients: ZL Wu, JB Xie, HL Zhang; (IV) Collection and assembly of data: KY Wang; (V) Data analysis and interpretation: L Yin; (VI) Manuscript writing: All authors; (VII) Final approval of manuscript: All authors.

[#]These authors contributed equally to this work.

Correspondence to: Bo Peng. Department of Urology, Shanghai Tenth People's Hospital, Tongji University School of Medicine, Shanghai 200072, China. Email: bopeng0611@126.com.

Background: To explore the mechanism of prostatic inflammation on prostate cancer (PCa) by comparing the changes of prostate epithelial cells and PCa cells in an inflammatory environment.

Methods: First, immunohistochemistry (IHC) was used to compare the level of expression of TNF- α , IL-1 β , IL-6, and TGF- β between benign prostatic hyperplasia (BPH), prostatitis, and PCa. Then primary prostate epithelial cells were sampled from patients who were suspected of PCa and had histological prostatitis (HP) confirmed by pathological biopsy. Lipopolysaccharide (LPS) or BAY11-7082 were used to investigate the change of androgen receptor (AR) and AR-mediated transcription, epithelial-mesenchymal transition (EMT) in primary prostate epithelial cells, and lymph node carcinoma of the prostate (LNCap) cells.

Results: TNF- α , IL-1 β , IL-6, and TGF- β were significantly increased in HP and PCa compared with those in BPH patients. The proliferation of primary prostate epithelial cells and LNCap cells got the inflection point at LPS 10 $\mu\text{g}/\text{mL}$. In an inflammatory environment with 10 $\mu\text{g}/\text{mL}$ LPS, both primary prostate epithelial cell and LNCap cell viability increased, and AR, AR-mediated transcription, and EMT processes were significantly increased. Inhibitors of NF- κB with 10 nM BAY11-7082 decreased AR, AR-mediated transcription, and EMT processes.

Conclusions: NF- κB regulates AR expression and EMT in prostatitis and PCa, and NF- κB inhibitors may have potential therapeutic value.

Keywords: Prostatitis; prostate cancer (PCa); lipopolysaccharide (LPS); epithelial-mesenchymal transition (EMT)

Submitted Sep 22, 2021. Accepted for publication Nov 18, 2021.

doi: 10.21037/tau-21-964

View this article at: <https://dx.doi.org/10.21037/tau-21-964>

Introduction

Prostate cancer (PCa) is the most frequently diagnosed cancer and the second leading cause of cancer-related death among American men (1). The occurrence and development

of PCa may involve a variety of genes and signal pathways, such as androgen receptor (AR) signaling (2). The average response time of castration treatment for patients with advanced PCa only lasts for 18 to 24 months, and PCa will

eventually develop into castration-resistant prostate cancer (CRPC) (3). How to effectively prevent the occurrence of PCa is a challenge faced by every urologist.

Prostatitis is the most common diagnosis in men below 50 years (4). Prostatitis refers to prostate inflammation presenting with lower urinary tract symptoms and sexual dysfunction. Up to 15% of men may suffer from prostatitis (5). Studies have demonstrated that chronic prostatitis/chronic pelvic pain syndrome (CP/CPPS) involves a complex pathophysiology, including infectious, immunologic, neurologic, endocrinologic and psychologic etiologies, with frequent intersections between the different entities (6). There is substantiating evidence to support the role of cytokines in prostatitis pathogenesis (7,8). Long-term inflammatory stimulation is closely related to tumorigenesis (9), with about 20% of tumors being related to inflammation (10), suggesting cytokine cascades, such as TNF- α , IL-6, and TGF- β , as manifestations of the underlying paraneoplastic systemic disease (11). The incidence of PCa in prostatitis had not been widely reported. Kim SH reported the incidence of PCa in prostatitis was 1.64%. Furthermore, the patients with prostatitis had a higher risk of PCa than the patients without prostatitis (12). Chronic asymptomatic prostatitis was detected in 31% patients with PCa, and there was a positive correlation between the inflammation aggressiveness grade and urological pathology grades. The aggressiveness of intraprostatic inflammation may be an important morphological factor affecting the Gleason score (13). In prostate lesions, focal prostate inflammatory atrophy (PIA) or high-grade prostate intraepithelial neoplasia (HGPIN) is often associated with infiltrating immune cells (14), which have been discussed in connection with early cancer development (15). These results implicate that inflammatory events in PIA may potentially contribute to the development of HGPIN and PCa. However, whether there is a direct causal interaction between cytokine cascades in inflammation and epithelial cells that result in tumor initiation is still not clear.

Compared with former study (16), LNCap cells and primary prostate epithelial cells were used in this study to investigate NF- κ B regulates AR expression and EMT in prostatitis and PCa. Compared with DU145 cells and PC3 cells, LNCap cells showed more androgen-sensitive and have remarkable epithelial properties, which widely used in EMT research (17). What's more, this is the first time to apply primary prostate epithelial cells, which sampled from patients who were suspected of PCa and had histological

prostatitis (HP) confirmed by pathological biopsy, in prostatitis-PCa-EMT research. In our study, BAY11-7082, an inhibitor of NF- κ B, used to suppressed LPS-mediated cells activation and abrogated the direct pro-migratory effect of LPS on cells. BAY11-7082 acts by inhibiting TNF- α -induced phosphorylation of I κ B- α , resulting in decreased NF- κ B and decreases expression of adhesion molecules. BAY11-7082 completely suppresses the LPS-stimulated and IL-1-stimulated phosphorylation of the activation loop of IKK β .

In this study, we extracted prostatic epithelial cells from patients with suspected PCa and simple prostatitis confirmed by pathological biopsy, where lipopolysaccharide (LPS) and BAY11-7082 were used to test the change of inflammatory factor secretion, AR, AR-mediated transcription, and epithelial-mesenchymal transition (EMT) in primary prostate epithelial cells and lymph node carcinoma of the prostate (LNCap) cells. We present the following article in accordance with the MDAR reporting checklist (available at <https://dx.doi.org/10.21037/tau-21-964>).

Methods

Clinical date

Seventy-seven patients were enrolled through the Department of Urology, Shanghai Tenth People's Hospital, from 2019 to 2020. Of these, 53 patients received plasma kinetic transurethral resection of the prostate; 32 patients were confirmed as having simple benign prostatic hyperplasia (BPH) with postoperative pathological diagnosis, with a mean age of 67 (range, 60–76) years; and 21 patients as having BPH combined with HP, with a mean age of 64 (range, 58–81) years. The remaining 24 PCa patients were diagnosed by preoperative biopsy, underwent laparoscopic radical prostatectomy, and were confirmed as having PCa using postoperative pathology. The study was approved by ethics board of Shanghai Tenth People's Hospital (No. 2019-K-69) and informed consent was taken from all the patients. The study was conducted in accordance with the Declaration of Helsinki (as revised in 2013).

Immunohistochemistry (IHC)

Specimens was prepared in paraffin sections, and 3% H₂O₂-methanol solution was added to inactivate the enzymes after antigen retrieval. After rinsing with phosphate-buffered saline (PBS) three times, 50–100 μ L normal goat serum was

added and incubated for 20 min at room temperature, then the first antibody was removed and incubated in a wet box for 2 h. Anti-TNF- α (ab1793), anti-IL-1 β (ab9722), anti-IL-6 (ab245770) and anti-TGF- β (ab31013) were obtained from Abcam company. After rinsing with PBS three times, 50 μ L enhancer was added and incubated for 30 min. After rinsing with PBS three times, the second antibody was added and incubated for 30 min. Following rinsing with PBS and dyeing with diaminobenzidine (DAB), hematoxylin staining took place for 10 min followed by dehydration seal. Protein expression was observed under a light microscope, and three high expression areas were selected for statistical analysis.

Isolation and purification of prostate epithelial cells

Prostate tissues of HP patients were collected and washed three times with PBS solution. After that, tissues were digested on a shaker in a Defined Keratinocyte-SFM (Thermo Fisher, Waltham, MA, USA) supplemented by Collagenase IV (Abbeva, Cambridge, UK) 200 U/mL for 30 min at 37 °C. The suspension was filtered through mesh to separate single cells. Cell pellets were collected using centrifugation at 200 g for 10 min, then the cells were resuspended and cultured in a Defined Keratinocyte-SFM (Thermo Fisher, Waltham, MA, USA) supplemented with bovine pituitary extract and 5 mM epidermal growth factor (EGF) at 37 °C with 5% CO₂.

LNCap cells were propagated using RPMI 1640 (Thermo Fisher, Waltham, MA, USA) supplemented with 10% fetal bovine serum (FBS), L-glutamine (2 mM), penicillin (100 U/mL), and streptomycin (100 mg/mL), at 37 °C with 5% CO₂.

Cell Counting Kit-8 (CCK-8) (Sigma Aldrich, St. Louis, MO, USA)

For cell proliferation, 5000 cells/100 μ L were seeded into 96 wells and cultured in endothelial cell growth medium-2 (EGM-2) containing LPS (L2654, Sigma Aldrich, St. Louis, MO, USA) at varying concentrations of 0, 0.1, 1, 10, 100, and 500 μ g/mL for 12, 24, and 48 h. Before feeding LPS, the cells were subjected to serum starvation for 24 h. Subsequently, the viability was estimated using CCK-8 according to the manufacturer's instructions. Ten μ L CCK-8 were added to 100 μ L EGM-2 medium in each well and incubated at 37 °C with 5% CO₂ for 4 h, and the absorbance was measured at 450 nm. The cell inhibition

rate was calculated as = absorbance in each well/absorbance in blank \times 100%. Considering the proliferation of primary prostate epithelial cells and LNCap cells got the inflection point at LPS 10 μ g/mL, higher concentrations of LPS get significantly inhibit both primary prostate epithelial cells and LNCap cells viability, LPS 10 μ g/mL was used as standard inflammation strength for prostate epithelial cells and LNCap cells.

Enzyme-linked immunosorbent assay (ELISA)

TNF- α (TNF- α ELISA Kit, BMS223HS), IL-1 β (IL-1 β ELISA Kit, KE00021), IL-6 (IL-6 ELISA Kit, BMS213-2), and TGF- β (TGF- β ELISA Kit, KE00002) levels were determined using an ELISA assay.

Immunofluorescence staining

Purified corpus cavernosal endothelial cells were cultured on coverslips placed in Millicell (PEZGS0816, Millipore, Burlington, MA, USA). Upon reaching 80–90% confluency, the cells were fixed with 4% paraformaldehyde for 30 min, permeated with Triton X-100 (Dow Chemical Company, Midland, MI, USA) for 20 min and blocked with 5% bovine serum albumin (BSA) for 1 h. The cells were incubated with primary antibodies overnight at 4 °C, followed by fluorescein-labeled secondary antibody for 2 h at room temperature. Subsequently, the nucleus was stained with 4,6-diamidino-2-phenylindole and observed under a confocal-microscope.

Quantitative polymerase chain reaction (qPCR)

Total RNA of tissue samples was extracted using TRIzol (Life Technologies, Carlsbad, CA, USA), and then the concentration and quality were measured. Messenger RNA (mRNA) was synthesized into circular DNA (cDNA). The reaction mixture consisted of 10 μ L of 2X Real-time PCR Master Mix (Thermo Fisher, Waltham, MA, USA) with 2 μ L primer, and 7 μ L diethyl pyrocarbonate (DEPC) water, and followed with predenaturation at 95 °C for 5 min, 40 cycles of denaturation at 95 °C for 15 s, annealing at 60 °C for 20 s, and extension at 72 °C for 40 s. Primer sequences of *AR*, *NKX3.1*, and *PSA* showed in *Table 1*.

Western blot (WB)

Cells were rinsed with PBS, dissociated with 250 mL ice-

Table 1 Primer sequences of AR, NKX3.1, and PSA

Primer name	Forward primer	Reverse primer
AR	CCAGGGACCATGTTTTGCC	CGAAGACGACAAGATGGACAA
NKX3.1	CCCACACTCAGGTGATCGAG	GAGCTGCTTTCGCTTAGTCTT
PSA	TGCCGCACTCAGTGTGTTAG	GCAATCCCAGCACAAAGATTCT
GAPDH	TGTTGCCATCAATGACCCCTT	CTCCACGACGTACTCAGCG

GAPDH was used as an internal control. AR, androgen receptor; PSA, prostate-specific antigen; GAPDH, glyceraldehyde-3-phosphate dehydrogenase.

cold modified radioimmunoprecipitation assay (RIPA) buffer containing both protease and phosphatase inhibitors, and then collected in Eppendorf tubes (Hamburg, Germany). The lysates were sonicated for 20 s (25% power, 0.5 cycles), centrifuged (12,000 g, 4 °C) for 30 min, the clear supernatants were transferred into new tubes, and the protein concentration was determined.

WBs were performed under standard conditions. An equivalent of 40 mg protein lysate was separated on a 10–12% polyacrylamide gel electrophoresis (SDS-PAGE) gel and then transferred to a polyvinylidene fluoride (PVDF) membrane. Then, the PVDF membrane was blocked with 5% milk at room temperature for 2 h and incubated with primary antibody overnight. Anti-eNOS (ab76198) was obtained from Abcam (Cambridge, UK), anti-AR (sc-7305) was obtained from Santa Cruz Biotechnology (Dallas, TX, USW), and phospho-Akt (4060) and Akt antibody (9272) were obtained from Cell Signaling Technology (Danvers, MA, USA). After washing four times in tris-buffered saline with 0.1% Tween 20 (TBST, Merck Schuchardt, Hohenbrunn, Germany) for 15 min, the membrane was incubated for 2 h in the dark with horseradish peroxidase (HRP)-conjugated rabbit or mouse antibody (34160 & 31430, Thermo Fisher, Waltham, MA, USA). The protein bands were detected with the enhanced chemiluminescence (ECL) system (Beyotime Institute of Biotechnology, Nantong, China), followed by autoradiography and quantified by densitometry. Glyceraldehyde-3-phosphate dehydrogenase (GAPDH) (sc-32233) was the internal reference.

Statistical analysis

The Student's *t*-test was used for two-group comparisons. One-way analysis of variance (ANOVA) followed by Bonferroni's test was used for multiple comparisons.

Results

Expression of TNF- α , IL-1 β , IL-6, and TGF- β in prostate tissues

Figure 1A shows prostate tissues of BPH as a normal control compared with HP and PCa. The IHC results (Figure 1B) showed that TNF- α , IL-1 β , IL-6, and TGF- β expression levels in HP and PCa were significantly increased compared with BPH patients ($P < 0.05$). Compared with PCa patients, the expression of TNF- α and TGF- β in HP patients was significantly higher ($P < 0.05$), but the expression levels of IL-1 β and IL-6 were not significantly different ($P > 0.05$). Collectively, IHC results showed that the inflammatory environment, as a disordered inflammatory mediator, played an important role in prostate tumorigenesis.

Identification of prostate epithelial cells

As shown in Figure 2, pan-cytokeratin staining (Figure 2A) is employed to identify prostate epithelial cells. Nuclear is significant (Figure 2B), cell outline is clear, and pan-cytokeratin expression is positive. Cell purity is over 90% based on counts (Figure 2C).

LPS treated promoted or inhibited prostate cells' growth and upregulated cytokines.

LPS was used to feed primary prostate epithelial cells and LNCap cells to facilitate a time-dependent and controlled inflammatory microenvironment in cell culture with varying concentrations from 1 to 1,000 $\mu\text{g/mL}$. We found that both the primary prostate epithelial and LNCap cell viability rose at low LPS concentrations (0 to 10 $\mu\text{g/mL}$) and then fell at high LPS concentrations (Figure 3A). After 12, 24, and 48 h, the cell supernatant was collected and filtered, and then cytokine levels were measured using ELISA assay (Figure 3B). Cytokines (TNF- α , IL-1 β , IL-6, and TGF- β) were significantly higher, and thus demonstrated that LPS

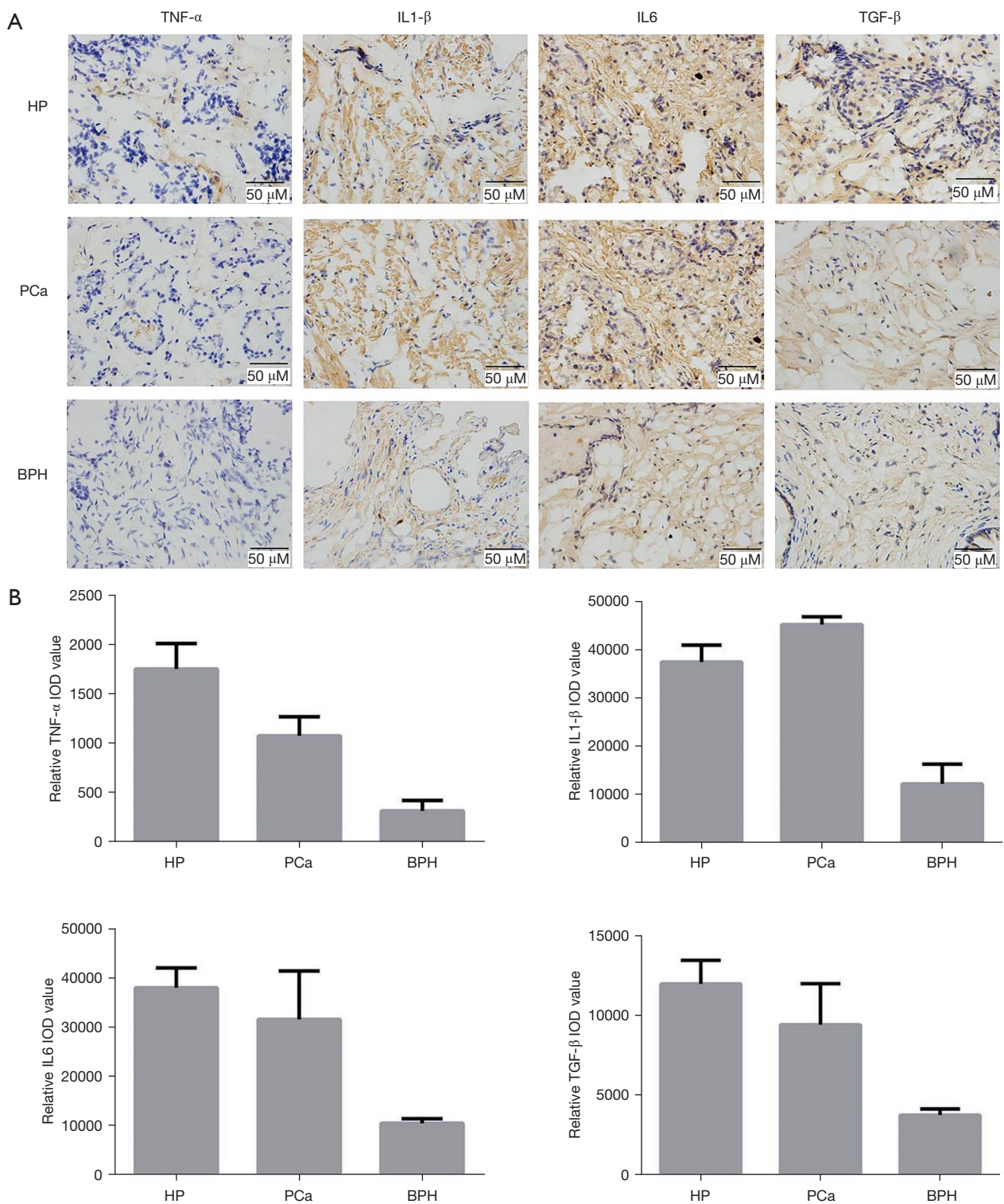


Figure 1 IHC results (A) compared the expression level of TNF- α , IL-1 β , IL-6, and TGF- β in HP, PCa, and BPH tissues ($\times 200$). (B) IOD analysis of TNF- α , IL-1 β , IL-6, and TGF- β protein levels in HP, PCa, and BPH tissues. IHC, immunohistochemical; HP, histological prostatitis; PCa, prostate cancer; BPH, benign prostatic hyperplasia; IOD, integrated optical density.

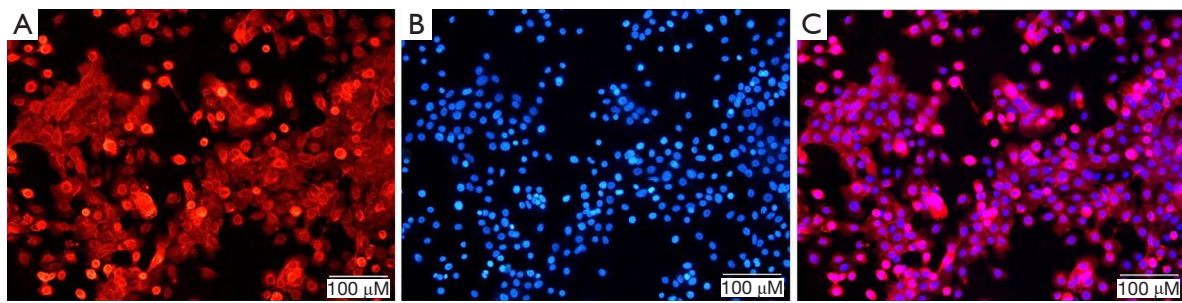


Figure 2 Identification of prostate epithelial cells. Immunofluorescence staining showed most cells expressed pan-cytokeratin (A), the cell nucleus was blue (B), and pan-cytokeratin expression was mainly expressed in the cytoplasm which was in line with the localization of cytoskeletal proteins (C).

stimulation is effective ($P < 0.05$) (see *Figure 3*).

LPS 10 $\mu\text{g}/\text{mL}$ was used as standard inflammation strength for prostate epithelial cells and LNCap cells.

Cell growth and secretory cytokines were suppressed by anti-inflammation BAY11-7082

As shown in *Figure 4*, BAY11-7082 10 nM was used to feed primary prostate epithelial cells (*Figure 4A*) and LNCap cells (*Figure 4B*) as anti-inflammatory treatment. After 48 h, both in primary prostate epithelial cells and LNCap cells, cell growth, which is mediated by LPS, was blocked and cytokines (TNF- α , IL-1 β , IL-6, and TGF- β) were significantly lower ($P < 0.05$) after treatment with BAY11-7082, showing BAY11-7082 10 nM for 48 h aggressively suppressed the inflammatory process both in primary prostate epithelial cells and LNCap cells.

WB results

p65 protein expression was significantly increased ($P < 0.05$) in primary prostate epithelial cells (*Figure 5A*) and LNCap cells (*Figure 5B*), showing the activation of the NF- κB signaling pathway. BAY11-7082 10 nM significantly inhibited p65 protein expression ($P < 0.05$). Similarly, EMT markers and β -catenin were significantly decreased ($P < 0.05$), while N-cadherin was significantly increased ($P < 0.05$) after treatment with LPS, and trends were reversed by blocking the NF- κB signaling pathway. AR and MMP-9 were significantly increased in LPS and reversed after feeding with BAY11-7082 and showed time dependence ($P < 0.05$).

qPCR results

The mRNA level of AR was significantly increased, and prostate-specific antigen (PSA) was upregulated by 48 h of LPS exposure as assessed by real-time polymerase chain reaction (RT-PCR), while NKX3.1 was significantly decreased ($P < 0.05$). These trends were reversed by BAY11-7082 ($P < 0.05$). Primary prostate epithelial cells (*Figure 6A*) and LNCap cells (*Figure 6B*) showed the same trend ($P < 0.05$) (*Figure 6*).

Results of fluorescent staining

Fluorescent staining of E-cadherin in primary prostate epithelial cells (*Figure 7A*) and vimentin in primary prostate epithelial cells (*Figure 7B*), E-cadherin in LNCap cells (*Figure 7C*), and vimentin in LNCap cells (*Figure 7D*) after exposure to 10 $\mu\text{g}/\text{mL}$ LPS or 10 nM BAY11-7082 for 12, 24 and 48 h. As shown in *Figure 7*, both in primary prostate epithelial cells and LNCap cells, E-cadherin (red) clearly showed lower brightness and vimentin (red) clearly showed a stronger inflammatory environment induced by LPS, and the difference increased with time. After treatment with 10 nM BAY11-7082 as an anti-inflammatory agent, E-cadherin was clearly higher, and vimentin was clearly lower.

Discussion

Epidemiological studies show that chronic inflammation is closely related to the occurrence and development

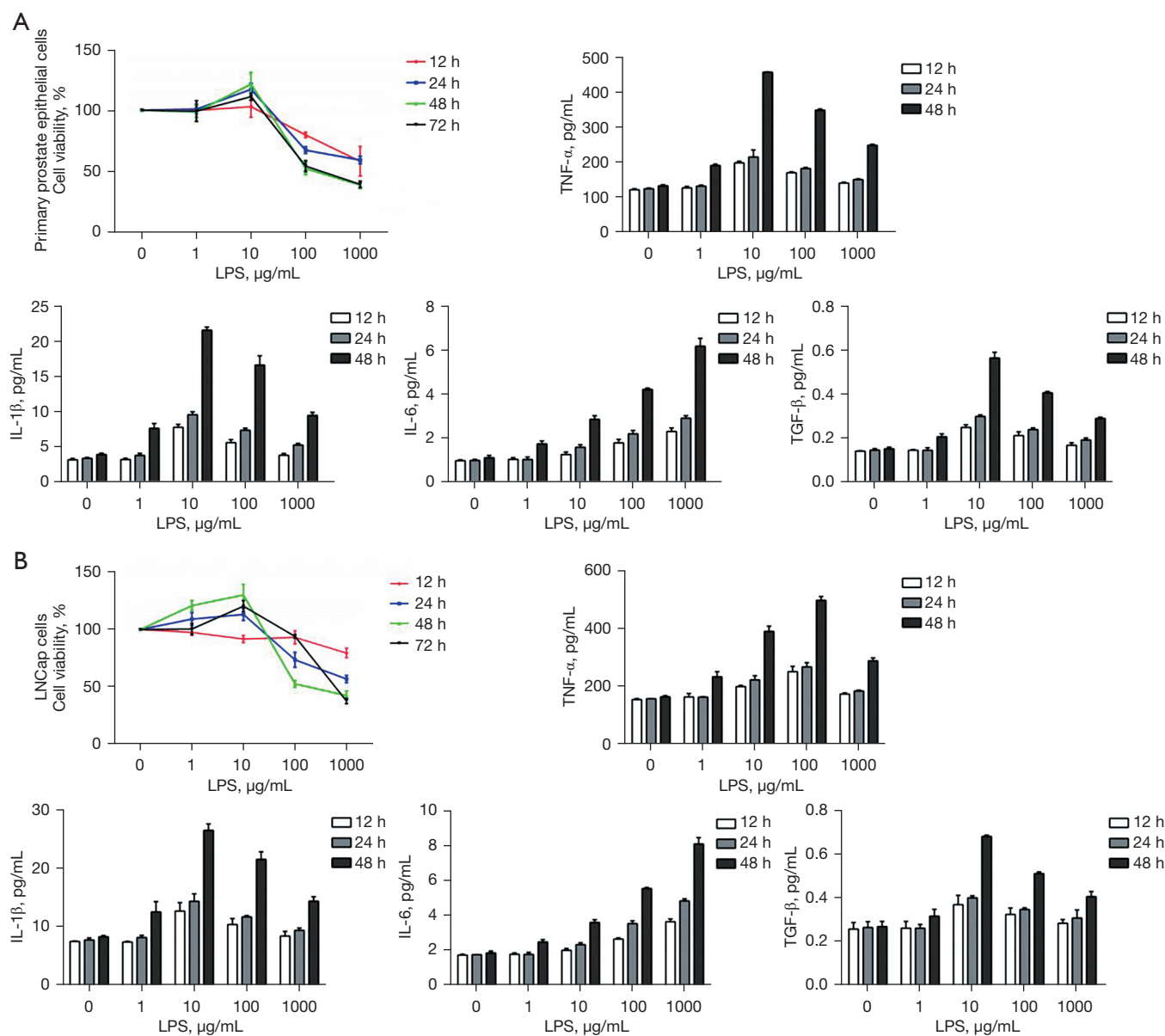


Figure 3 The increasing doses of LPS influenced proliferation (A) and cytokine levels (B) of primary prostate epithelial cells and LNCap cells. LPS, lipopolysaccharide; LNCap, lymph node carcinoma of the prostate.

of prostatic cancer (18). CP is a common finding in radical prostatectomy specimens, where peripheral zone inflammation has been reported in 95% cases, and whereby the peripheral zone is the preferred location of PCa (19). In a 5-year follow-up study, a new cancer incidence of 20% was reported in patients with chronic inflammation (20). By contrast, a new cancer incidence of only 2% was reported in patients with adenocarcinoma initially showing no inflammation (20). After adjustment for age, family history,

and other potential confounders, regular use of nonsteroidal anti-inflammatory drugs (NSAIDs) reduced PCa risks (21,22).

In this study, we used Collagenase IV (Abbeva, Cambridge, UK) to isolate prostate epithelial cells, which is the most commonly agent used for tissue dissociation (23,24). Also, pan-cytokeratin staining showed that the cell purity is high and suitable for research. LNCap cells were also tested. LPSs were used to stimulate cells. LPS,

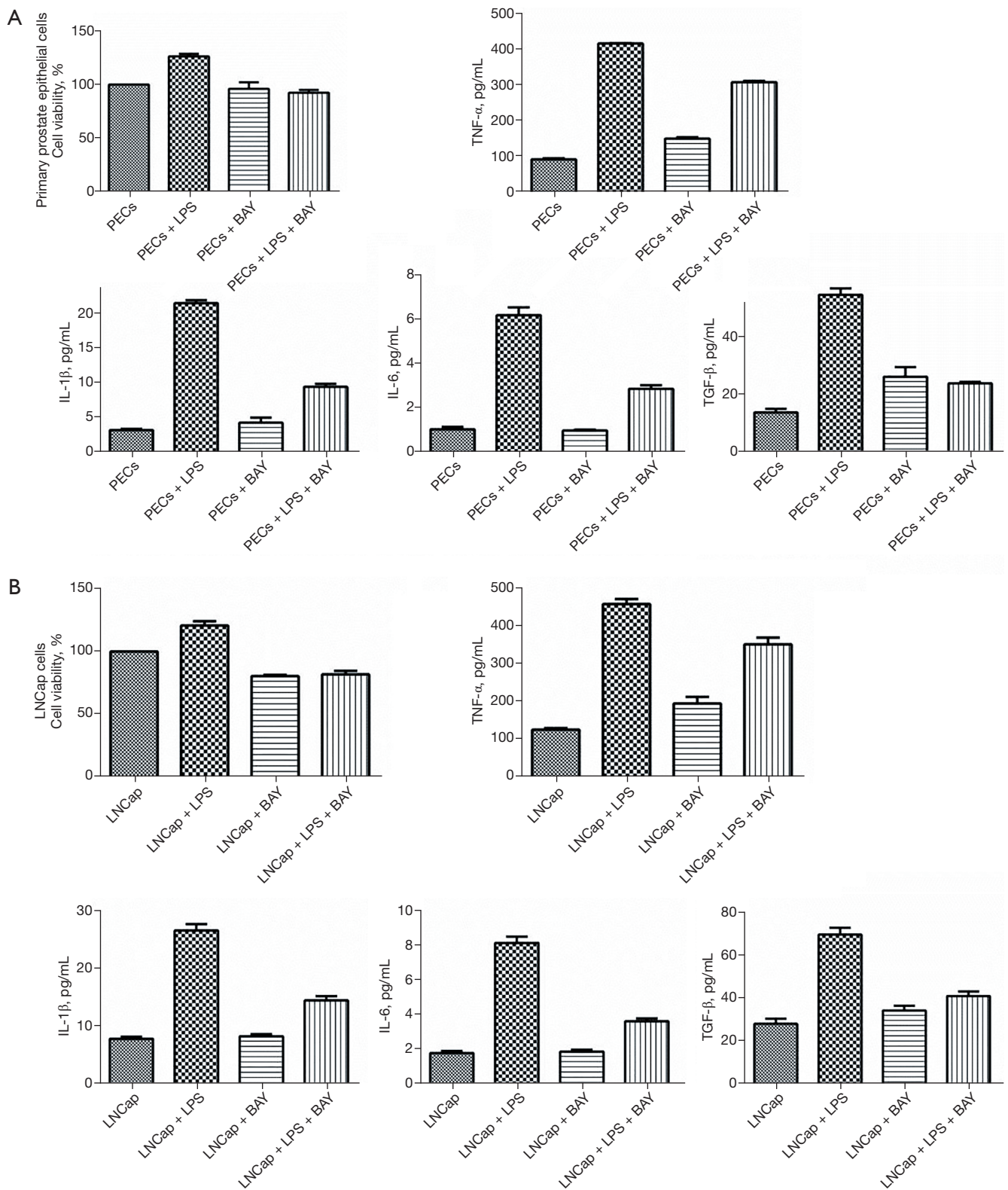


Figure 4 After 48 h, both in primary prostate epithelial cells (A) and LNCap cells (B), cell growth, which is mediated by LPS was blocked and cytokines (TNF- α , IL-1 β , IL-6, and TGF- β) were significantly lower after treatment with BAY11-7082. LNCap, lymph node carcinoma of the prostate; LPS, lipopolysaccharide.

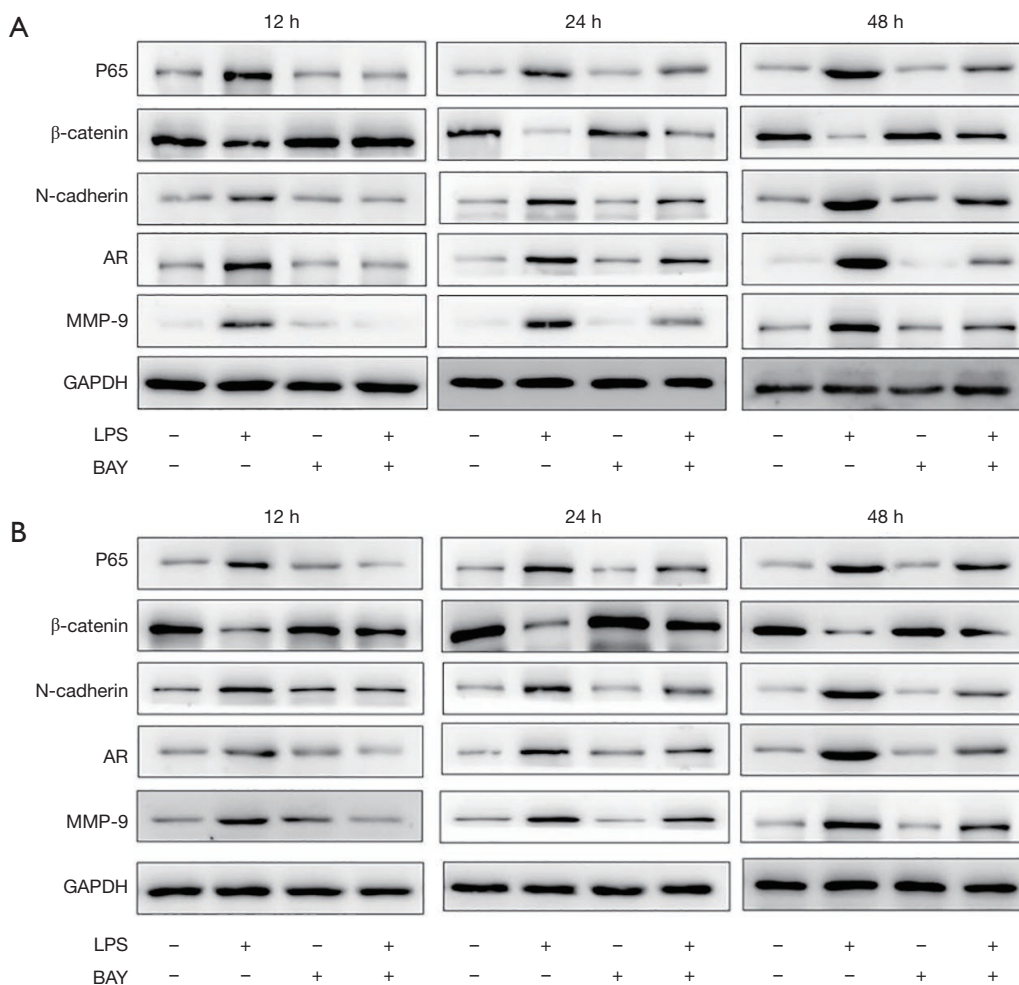


Figure 5 WB assesses the protein level of β -catenin, N-cadherin, p65, AR, Capase-3, and MMP-9 in primary prostate epithelial cells (A) and LNCap cells (B). LPS activated the NF- κ B signaling pathway (p65) and promoted the EMT process, increased AR and MMP-9 in both primary prostate epithelial cells and LNCap cells, and trends were reversed by blocking the NF- κ B signaling pathway with BAY11-7082. WB, western blot; AR, androgen receptor; LNCap, lymph node carcinoma of the prostate; LPS, lipopolysaccharide; EMT, epithelial-mesenchymal transition; GAPDH, glyceraldehyde-3-phosphate dehydrogenase.

characteristic components of the cell wall of gram-negative bacteria, and lipid A can stimulate cells of the innate immune system using the toll-like receptor 4 (TLR4) (25), which recognizes common pathogen-associated molecular patterns. Also, LPS has been used to induce inflammation *in vitro* (26,27) and has also been employed to establish a rat prostatitis model (28). In this study, we also used BAY11-7082, which is an inhibitor of the NF- κ B signaling pathway, to suppress the inflammatory process. BAY11-7082 can prevent cytokine-induced I κ B- α phosphorylation and has been widely used to reduce inflammation in a rat injury model (29).

NF- κ B has initially been identified as an enhancer-binding protein for the immunoglobulin light chain in B lymphocytes. p65, the major activation subunit of NF- κ B, is an important downstream substrate of mitogen-activated protein kinase, phosphatidylinositol 3-kinase, Akt, and protein kinase C (30). Many studies have assessed the relationship of NF- κ B expression with clinical features of human PCa. Nuclear levels of NF- κ B/p65 correlate with NF- κ B-dependent *BclII*, *cyclin D1*, *MMP-9*, and *VEGF* expression (31). Compared with benign prostatic epithelium, NF- κ B/p65 is overexpressed in prostatic intraepithelial neoplasia and cancer (32). In addition,

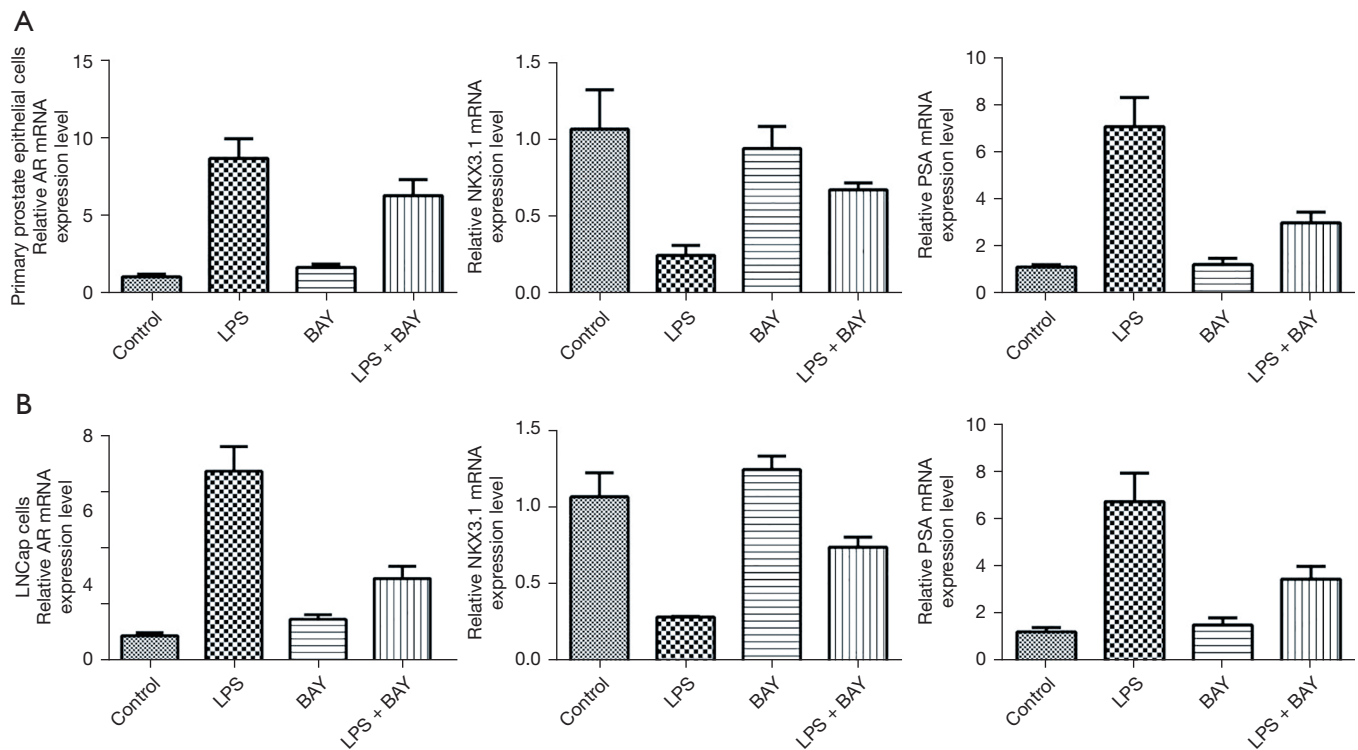


Figure 6 Both in primary prostate epithelial cells (A) and LNCap cells (B), the mRNA level of AR and PSA was significantly increased, while NKK3.1 was significantly decreased. Also, these trends were reversed by BAY11-7082. LNCap, lymph node carcinoma of the prostate; mRNA, messenger RNA; AR, androgen receptor; PSA, prostate-specific antigen; LPS, lipopolysaccharide.

NF- κ B/p65 expression is a predictive factor of biochemical recurrence (33) and outcome (34) in patients with positive surgical margins. Jaganathan *et al.* (35) also demonstrated that the activation of *NF- κ B* promoted the deacetylation of *MYST1* and linked the transcription functions of *AR* to escalate the resistance to therapeutic regimens and promote the aggressive growth of tumors.

The expression of *NF- κ B* and the secretion of inflammatory cytokines have been shown to contribute to the production of reactive oxygen species (ROS). While certain *NF- κ B*-regulated genes play major roles in regulating the amount of ROS in cells and result in cell death, ROS modulates the *NF- κ B* response and then activates *NF- κ B* mediated transcription, and additional ROS production is reduced to promote cell survival (36). Many inflammatory cytokines may mediate the interplay of prostatic inflammation and carcinogenesis. A number of recent studies (37-39) have correlated the potential interaction of single nucleotide polymorphisms between *TNF- α* , *IL-1 β* , and *TGF- β* in conferring an increased risk of PCa.

IL-6 is a cytokine involved in the etiology of PCa (40). It takes part in many innate and adaptive inflammatory processes, such as B cell activation and the acute-phase inflammatory response. Prostate cells produce *IL-6* and *IL-6-R* to promote the activation of *AR* and are correlated with measures of PCa morbidity (18). The activation of *IL-6*, *STAT3*, and *NF- κ B* maintains the epigenetic transformation of cancer cells (41).

We also reported that *NF- κ B* signaling promotes EMT. EMT plays important roles in the invasion and metastasis during carcinogenesis, whereby epithelial cell-cell adhesion is decreased while the migration and invasion capacity is increased (42). The main features of EMT are transcriptional silencing of E-cadherin and upregulated mesenchymal markers such as vimentin and N-cadherin, which is the process of cadherin switching. EMT is now recognized as an important mechanism of tumor progression and metastatic dissemination and can be induced by many stimulating factors, such as growth factors, cytokines, and hypoxia. *TGF- β* is one of the most

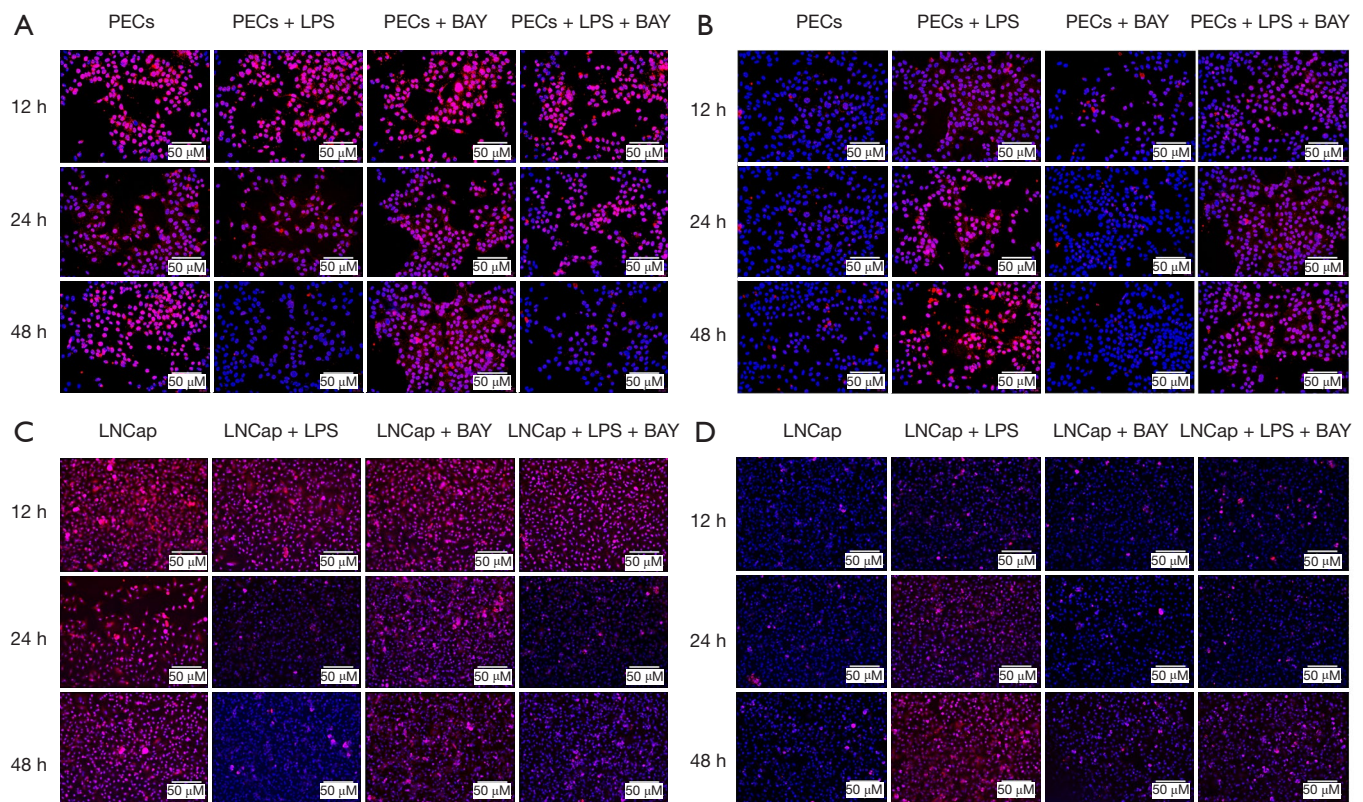


Figure 7 Fluorescent staining of E-cadherin in primary prostate epithelial cells (A) and vimentin in primary prostate epithelial cells (B), E-cadherin in LNCap cells (C), and vimentin in LNCap cells (D) after exposure to 10 $\mu\text{g}/\text{mL}$ LPS or 10 nM BAY11-7082 for 12, 24 and 48 h. LNCap, lymph node carcinoma of the prostate; LPS, lipopolysaccharide; PECs, prostate epithelial cells.

prominent extracellular inducers (43). Higher TGF- β 1 expression was observed in tumors with higher Gleason scores (44). Although it has been demonstrated that TGF- β can inhibit the proliferation of tumor cells, TGF- β can increase stronger local tumor invasiveness by inducing EMT in advanced cancers (45).

Conclusions

NF- κ B can regulate *AR* expression and EMT in prostatitis and PCa, and *NF- κ B* inhibitors may have a potential therapeutic value.

Acknowledgments

Funding: This study was supported by the project grant from the Shanghai Science and Technology Commission (No. 19140905402) and the Shanghai Tenth People's Hospital (No. 04.03.20125).

Footnote

Reporting Checklist: The authors have completed the MDAR reporting checklist. Available at <https://dx.doi.org/10.21037/tau-21-964>

Data Sharing Statement: Available at <https://dx.doi.org/10.21037/tau-21-964>

Conflicts of Interest: All authors have completed the ICMJE uniform disclosure form (available at <https://dx.doi.org/10.21037/tau-21-964>). All authors report that this study was supported by a project grant from Shanghai Science and Technology Commission (No. 19140905402) and a project grant from Shanghai Tenth People's Hospital (No. 04.03.20125). The authors have no other conflicts of interest to declare.

Ethical Statement: The authors are accountable for all

aspects of the work in ensuring that questions related to the accuracy or integrity of any part of the work are appropriately investigated and resolved. The study was approved by ethics board of Shanghai Tenth People's Hospital (No. 2019-K-69) and informed consent was taken from all the patients. The study was conducted in accordance with the Declaration of Helsinki (as revised in 2013).

Open Access Statement: This is an Open Access article distributed in accordance with the Creative Commons Attribution-NonCommercial-NoDerivs 4.0 International License (CC BY-NC-ND 4.0), which permits the non-commercial replication and distribution of the article with the strict proviso that no changes or edits are made and the original work is properly cited (including links to both the formal publication through the relevant DOI and the license). See: <https://creativecommons.org/licenses/by-nc-nd/4.0/>.

References

- Jemal A, Bray F, Center MM, et al. Global cancer statistics. *CA Cancer J Clin* 2011;61:69-90.
- Shen MM, Abate-Shen C. Molecular genetics of prostate cancer: new prospects for old challenges. *Genes Dev* 2010;24:1967-2000.
- Lin CY, Chuu CP. New classification may assist the development of targeted therapies for treatment-refractory castration-resistant prostate cancer. *Transl Androl Urol* 2020;9:837-9.
- Potts J, Payne RE. Prostatitis: Infection, neuromuscular disorder, or pain syndrome? Proper patient classification is key. *Cleve Clin J Med* 2007;74 Suppl 3:S63-71.
- Schaeffer AJ, Datta NS, Fowler JE Jr, et al. Overview summary statement. Diagnosis and management of chronic prostatitis/chronic pelvic pain syndrome (CP/CPPS). *Urology* 2002;60:1-4.
- Pena VN, Engel N, Gabrielson AT, et al. Diagnostic and Management Strategies for Patients with Chronic Prostatitis and Chronic Pelvic Pain Syndrome. *Drugs Aging* 2021;38:845-86.
- Zhang H, Li F, Li WW, et al. The inflammasome as a target for pain therapy. *Br J Anaesth* 2016;117:693-707.
- Jang TL, Schaeffer AJ. The role of cytokines in prostatitis. *World J Urol* 2003;21:95-9.
- Shalpour S, Karin M. Immunity, inflammation, and cancer: an eternal fight between good and evil. *J Clin Invest* 2015;125:3347-55.
- Coussens LM, Werb Z. Inflammation and cancer. *Nature* 2002;420:860-7.
- Li H, Wang Y, Zhang M, et al. The high expression of TNF- α and NF- κ B in tumor microenvironment predicts good prognosis of patients with BCLC-0-B hepatocellular carcinoma. *Transl Cancer Res* 2019;8:532-41.
- Kim SH, Kwon WA, Joung JY. Impact of Benign Prostatic Hyperplasia and/or Prostatitis on the Risk of Prostate Cancer in Korean Patients. *World J Mens Health* 2021;39:358-65.
- Aglamis E, Ceylan C, Akin MM. Is there a correlation between the aggressiveness of chronic asymptomatic prostatitis National Institutes of Health category IV and the Gleason score in patients with prostate cancer? *Can Urol Assoc J* 2020;14:E568-73.
- Perletti G, Montanari E, Vral A, et al. Inflammation, prostatitis, proliferative inflammatory atrophy: 'Fertile ground' for prostate cancer development? *Mol Med Rep* 2010;3:3-12.
- Puhr M, De Marzo A, Isaacs W, et al. Inflammation, Microbiota, and Prostate Cancer. *Eur Urol Focus* 2016;2:374-82.
- Jain S, Dash P, Minz AP, et al. Lipopolysaccharide (LPS) enhances prostate cancer metastasis potentially through NF- κ B activation and recurrent dexamethasone administration fails to suppress it in vivo. *Prostate* 2019;79:168-82.
- Singh KB, Hahm ER, Singh SV. Leelamine suppresses cMyc expression in prostate cancer cells in vitro and inhibits prostate carcinogenesis in vivo. *J Cancer Metastasis Treat* 2021;7:16.
- Sfanos KS, De Marzo AM. Prostate cancer and inflammation: the evidence. *Histopathology* 2012;60:199-215.
- Gerstenbluth RE, Seftel AD, MacLennan GT, et al. Distribution of chronic prostatitis in radical prostatectomy specimens with up-regulation of bcl-2 in areas of inflammation. *J Urol* 2002;167:2267-70.
- MacLennan GT, Eisenberg R, Fleshman RL, et al. The influence of chronic inflammation in prostatic carcinogenesis: a 5-year followup study. *J Urol* 2006;176:1012-6.
- Jafari S, Etmian M, Afshar K. Nonsteroidal anti-inflammatory drugs and prostate cancer: a systematic review of the literature and meta-analysis. *Can Urol Assoc J* 2009;3:323-30.
- Salinas CA, Kwon EM, FitzGerald LM, et al. Use of aspirin and other nonsteroidal antiinflammatory

- medications in relation to prostate cancer risk. *Am J Epidemiol* 2010;172:578-90.
23. Prater M, Shehata M, Watson CJ, et al. Enzymatic dissociation, flow cytometric analysis, and culture of normal mouse mammary tissue. *Methods Mol Biol* 2013;946:395-409.
 24. Volovitz I, Shapira N, Ezer H, et al. A non-aggressive, highly efficient, enzymatic method for dissociation of human brain-tumors and brain-tissues to viable single-cells. *BMC Neurosci* 2016;17:30.
 25. Rodríguez-González R, Baluja A, Veiras Del Río S, et al. Effects of sevoflurane postconditioning on cell death, inflammation and TLR expression in human endothelial cells exposed to LPS. *J Transl Med* 2013;11:87.
 26. Song Y, Zhao H, Liu J, et al. Effects of Citral on Lipopolysaccharide-Induced Inflammation in Human Umbilical Vein Endothelial Cells. *Inflammation* 2016;39:663-71.
 27. Zhang D, Zhou J, Ye LC, et al. Autophagy maintains the integrity of endothelial barrier in LPS-induced lung injury. *J Cell Physiol* 2018;233:688-98.
 28. Rodrigues FS, Souza MA, Magni DV, et al. N-acetylcysteine prevents spatial memory impairment induced by chronic early postnatal glutaric acid and lipopolysaccharide in rat pups. *PLoS One* 2013;8:e78332.
 29. Kim YS, Kim JS, Kwon JS, et al. BAY 11-7082, a nuclear factor- κ B inhibitor, reduces inflammation and apoptosis in a rat cardiac ischemia-reperfusion injury model. *Int Heart J* 2010;51:348-53.
 30. Zhang L, Altuwaijri S, Deng F, et al. NF-kappaB regulates androgen receptor expression and prostate cancer growth. *Am J Pathol* 2009;175:489-99.
 31. Shukla S, MacLennan GT, Fu P, et al. Nuclear factor-kappaB/p65 (Rel A) is constitutively activated in human prostate adenocarcinoma and correlates with disease progression. *Neoplasia* 2004;6:390-400.
 32. Sweeney C, Li L, Shanmugam R, et al. Nuclear factor-kappaB is constitutively activated in prostate cancer in vitro and is overexpressed in prostatic intraepithelial neoplasia and adenocarcinoma of the prostate. *Clin Cancer Res* 2004;10:5501-7.
 33. Lessard L, Mes-Masson AM, Saad F. NFkappaB : a new marker kappable of predicting prostate cancer outcome. *Bull Cancer* 2006;93:891-9.
 34. Lepor H, Kaci L. The impact of open radical retropubic prostatectomy on continence and lower urinary tract symptoms: a prospective assessment using validated self-administered outcome instruments. *J Urol* 2004;171:1216-9.
 35. Jaganathan A, Chaurasia P, Xiao GQ, et al. Coactivator MYST1 regulates nuclear factor- κ B and androgen receptor functions during proliferation of prostate cancer cells. *Mol Endocrinol* 2014;28:872-85.
 36. Morgan MJ, Liu ZG. Crosstalk of reactive oxygen species and NF- κ B signaling. *Cell Res* 2011;21:103-15.
 37. Zabaleta J, Lin HY, Sierra RA, et al. Interactions of cytokine gene polymorphisms in prostate cancer risk. *Carcinogenesis* 2008;29:573-8.
 38. Zabaleta J, Su LJ, Lin HY, et al. Cytokine genetic polymorphisms and prostate cancer aggressiveness. *Carcinogenesis* 2009;30:1358-62.
 39. Kwon EM, Salinas CA, Kolb S, et al. Genetic polymorphisms in inflammation pathway genes and prostate cancer risk. *Cancer Epidemiol Biomarkers Prev* 2011;20:923-33.
 40. Smith PC, Hobisch A, Lin DL, et al. Interleukin-6 and prostate cancer progression. *Cytokine Growth Factor Rev* 2001;12:33-40.
 41. Schwabe RF, Wang TC. Targeting liver cancer: first steps toward a miRacle? *Cancer Cell* 2011;20:698-9.
 42. Katz B, Reis ST, Viana NI, et al. Comprehensive study of gene and microRNA expression related to epithelial-mesenchymal transition in prostate cancer. *PLoS One* 2014;9:e113700.
 43. Kalluri R, Weinberg RA. The basics of epithelial-mesenchymal transition. *J Clin Invest* 2009;119:1420-8.
 44. Reis ST, Pontes-Júnior J, Antunes AA, et al. Tgf- β 1 expression as a biomarker of poor prognosis in prostate cancer. *Clinics (Sao Paulo)* 2011;66:1143-7.
 45. Xu J, Lamouille S, Derynck R. TGF-beta-induced epithelial to mesenchymal transition. *Cell Res* 2009;19:156-72.
- (English Language Editor: B. Meiser)

Cite this article as: Wang GC, Huang TR, Wang KY, Wu ZL, Xie JB, Zhang HL, Yin L, Tang WL, Peng B. Inflammation induced by lipopolysaccharide advanced androgen receptor expression and epithelial-mesenchymal transition progress in prostatitis and prostate cancer. *Transl Androl Urol* 2021;10(11):4275-4287. doi: 10.21037/tau-21-964