

RESEARCH

Open Access

Biomechanical evaluation of predictive parameters of progression in adolescent isthmic spondylolisthesis: a computer modeling and simulation study

Amandine Sevrain^{1,2}, Carl-Eric Aubin^{1,2*}, Hicham Gharbi^{1,2}, Xiaoyu Wang¹ and Hubert Labelle²

Abstract

Background: Pelvic incidence, sacral slope and slip percentage have been shown to be important predicting factors for assessing the risk of progression of low- and high-grade spondylolisthesis. Biomechanical factors, which affect the stress distribution and the mechanisms involved in the vertebral slippage, may also influence the risk of progression, but they are still not well known. The objective was to biomechanically evaluate how geometric sacral parameters influence shear and normal stress at the lumbosacral junction in spondylolisthesis.

Methods: A finite element model of a low-grade L5-S1 spondylolisthesis was constructed, including the morphology of the spine, pelvis and rib cage based on measurements from biplanar radiographs of a patient. Variations provided on this model aimed to study the effects on low grade spondylolisthesis as well as reproduce high grade spondylolisthesis. Normal and shear stresses at the lumbosacral junction were analyzed under various pelvic incidences, sacral slopes and slip percentages. Their influence on progression risk was statistically analyzed using a one-way analysis of variance.

Results: Stresses were mainly concentrated on the growth plate of S1, on the intervertebral disc of L5-S1, and ahead the sacral dome for low grade spondylolisthesis. For high grade spondylolisthesis, more important compression and shear stresses were seen in the anterior part of the growth plate and disc as compared to the lateral and posterior areas. Stress magnitudes over this area increased with slip percentage, sacral slope and pelvic incidence. Strong correlations were found between pelvic incidence and the resulting compression and shear stresses in the growth plate and intervertebral disc at the L5-S1 junction.

Conclusions: Progression of the slippage is mostly affected by a movement and an increase of stresses at the lumbosacral junction in accordance with spino-pelvic parameters. The statistical results provide evidence that pelvic incidence is a predictive parameter to determine progression in isthmic spondylolisthesis.

Keywords: Isthmic spondylolisthesis, finite element model, pelvic incidence, biomechanical model

Background

Spondylolisthesis is a spinal condition characterized by a posteroanterior slippage of one vertebra over the vertebra immediately below [1-4]. The biomechanics of its occurrence and progression is yet to be fully studied. The knowledge on its biomechanics is essential for its

clinical prediction and the improvement of its treatment. Spondylolisthesis was thought to be closely related to spondylolysis which is a unilateral or bilateral pars defect of a vertebra that affects 5-6% of the population [5]. Other factors, such as disc herniation or changes in spinopelvic morphology, also have an important role in the occurrence and development of spondylolisthesis [1-4]. Approximately 80% of patients with spondylolysis at L5 have the isthmic type of spondylolisthesis, and 20% of these same patients show a slippage that exceeds

* Correspondence: carl-eric.aubin@polymtl.ca

¹École Polytechnique, Université de Montréal, P.O. Box 6079, Station Centre-Ville, Montréal (Québec), H3C 3A7 CANADA

Full list of author information is available at the end of the article

25% [6]. In pediatric patients, elevated stress in the structures surrounding the growth plate may cause epiphyseal separation, apophyseal bony ring fracture, slippage at the growth plate without provoking disc degeneration and formation of a sacral dome, but the etiology and pathomechanisms of spondylolisthesis remain unclear [7-12].

Studies have been reported on how the occurrence and development of spondylolisthesis might be influenced by various spinal parameters. Retrospective and prospective investigations have been performed to determine spinal parameters that may increase the risk of spondylolisthesis progression using radiographic measurements. Pelvic incidence (PI) has been shown to be an important predicting factor for assessing the risk of progression of low-grade spondylolisthesis [1,2]. In high-grade spondylolisthesis, sagittal plane pelvic orientation parameters, such as sacral slope (SS) and pelvic tilt (PT), are more relevant since the PI is always high [13]. Spinal and lumbosacral parameters, essential to maintain global sagittal balance (such as slip angle, the lumbar index or the sacral contour), are thought to be secondary changes as their role is related to the degree of dysplasia rather than the cause of slippage [1,14,15]. Mac-Thiong et al. proposed a clinically oriented classification method, which detailed that in low-grade spondylolisthesis, patients with high PI/high SS were classified as “shear-type”, and those with low PI/low SS were classified as “nutcracker-type” [7]. In high grade spondylolisthesis, patients with high SS/low PT were classified as “balanced pelvis”, while those with low SS/high PT were classified as “retroverted pelvis” (Figure 1). Since spondylolisthesis is mainly assessed using radiographic measurements, forces responsible for the progression of the deformity remain unclear.

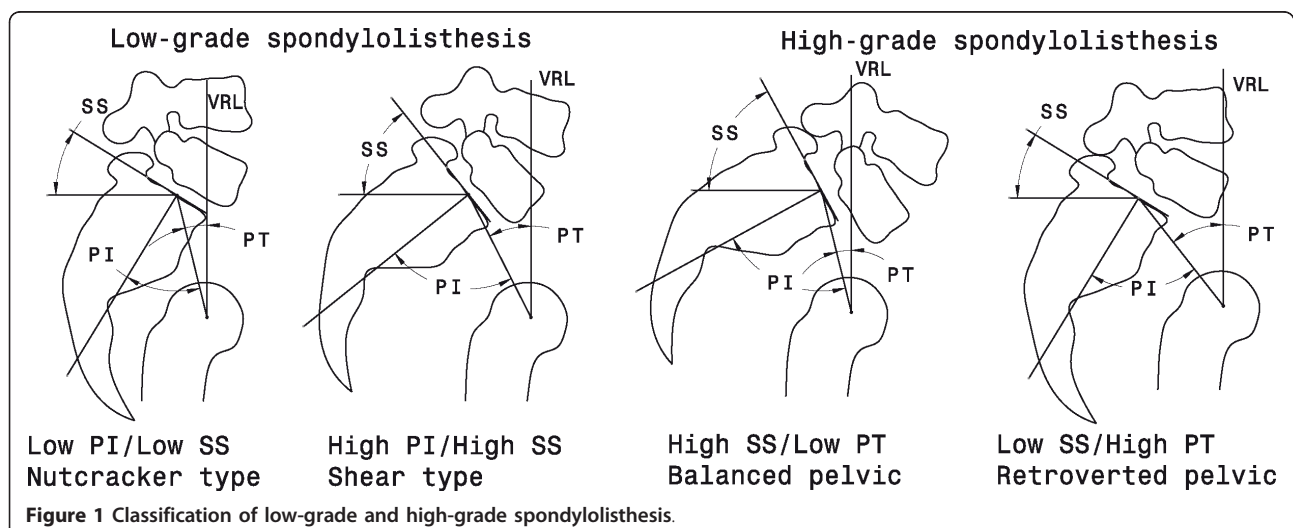
Discussions were also reported on the biomechanical aspects of the occurrence and progression of the spondylolisthesis. Mac-Thiong suggested that dysplastic changes affect the direction and magnitude of stress and so increase the risk of progression. Therefore, the presence of different patterns of sagittal spinopelvic balance suggests that biomechanical factors may influence the risk of progression in spondylolisthesis. Furthermore, a mechanism of slippage through the growth plate has been documented after a physis stress fracture of the vertebral body, while others found that the slippage occurs at the disc level [8,9,11,16-18].

Several finite element models of spondylolysis and spondylolisthesis have been reported in the literature which were aimed at understanding of the biomechanics of spondylolisthesis [3,8,9,16,19-22]. However most of these studies did not take into account the overall sagittal balance, nor the influence of the surrounding musculature, which affects the stress distribution of the anatomical structures under consideration, and the mechanisms involved in the slippage for the low-grade spondylolisthesis. Therefore, several biomechanical factors and important information are still missing in the current finite element models; the mechanism of progression from low grade to high grade spondylolisthesis in adolescents remains poorly understood since no longitudinal biomechanical studies have been performed.

The objective of this study was to assess the mechanisms involved at the lumbosacral junction in the progression of slippage from low to high grade spondylolisthesis and identify the spino-pelvic parameters that are predictive of the progression.

Methods

The geometry of the finite element model (FEM) was constructed on the basis of patient specific characteristics



obtained from a multi-view radiographic reconstruction technique. This method provided 3D coordinates of 17 points per vertebra, 11 per rib and 23 on the pelvis which were then computed using a self-calibration and optimization algorithm [23,24]. A detailed geometric model of normal vertebrae was then transformed and adjusted to match those landmarks using a dual kriging free form deformation technique. The accuracy of this reconstruction technique is 3.3 mm on average [24]. The progression mechanism was not studied from the normal state, but from a low-grade to high-grade spondylolisthesis. The patient under consideration (age = 14 years old, height = 157.2 cm, weight = 45.5 kg) possesses a low-grade spondylolisthesis (Grade II) with a PI = 61° and a SS = 52°. The resulting FEM consisted of approximately 93,000 elements governed by linear elastic behaviour (Figure 2). The model was composed of a simplified FEM with beam-type elements for the segment T1-L3 and the rib cage and a detailed volumetric model for the L4-pelvis segment [22,25-27]. The simplified FEM includes 1050 beam elements to represent the vertebrae, the intervertebral discs, the ribs, the costal cartilages and the sternum. Shells, springs and non linear contact elements were used to represent the ligaments. The detailed model includes the following: cortical shell, trabecular bone, bilateral lysis in the pars of L5, sacral dome conformed to the patient's physiology, annulus fibrosus, nucleus pulposus, all spinal ligaments, and vertebral growth plates.

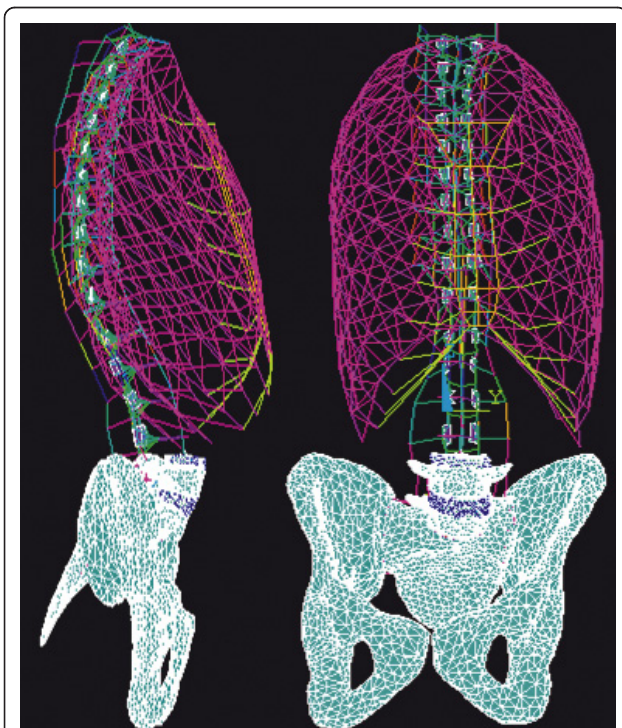


Figure 2 Finite Element Model.

More specifically, the vertebral growth plates were constructed in three sections in accordance with physiological findings (a sensitive zone, a newly formed bone layer and a transition zone) [28,29]. The material properties of these anatomical partitions reflect findings from published studies (Additional file 1).

The applied spinal forces are based on load distributions, as reported by Schultz et al., and defined by a body weight (BW) distribution on each vertebral bodies (Additional file 2) [30]. A “follower load” based on the mathematical model of Patwardhanwas was adopted in this model [31,32]. The vector sum of muscle and gravity forces produced a single internal force vector that acted tangent to the curvature of the spine and acted through each segmental centroid, “following” the kyphotic and lordotic curvature of the spine (Figure 3). The boundary conditions of the model were provided by a torsion spring at the acetabulum while T1 was blocked transversally to represent a standing posture [33].

Three spino-pelvic parameters were parameterized in the model for the aim of the study. The slip percentage was defined by an offset of the pelvis nodes in the local coordinate system of the inferior plate of L5. The pelvic incidence and sacral slopes were defined using a rotation matrix which revolved around the center of the S1 plate, with respect to the sacrum and pelvis nodes.

In order to evaluate the influence and interactions of the PI, SS and slip percentage in the progression of low-

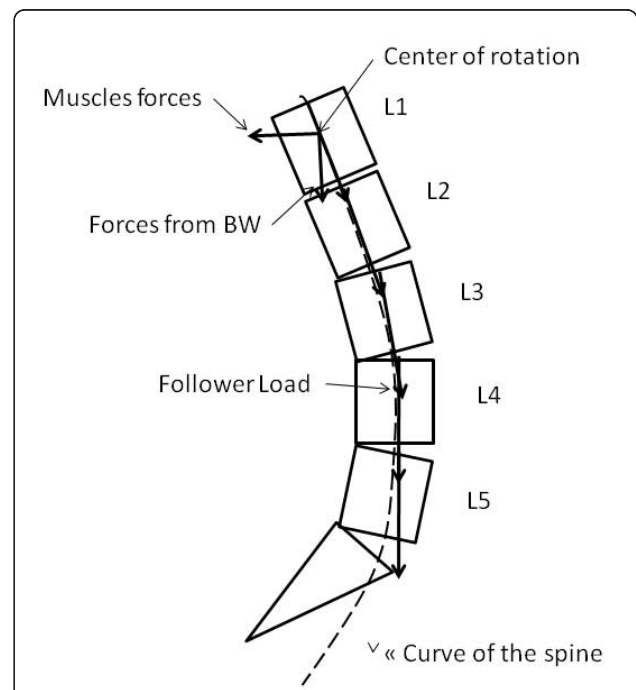


Figure 3 Schematic of the follower load showing the load path “following” the lordotic curvature of the lumbar spine.

grade to high-grade spondylolisthesis, a 23 factorial design was used. The conditions of the eight FEM simulations required by this design are defined in the additional file 3. However, two of these experiments were not representative of a spondylolisthesis. As a result, a new experimental design with constraint equations was used to eliminate these cases resulting in ten plausible low and high grade spondylolisthesis configurations to simulate.

Normal and shear stress in the sagittal plane were examined, with a detailed analysis of the stress at the anterior zone of the intervertebral disc L5-S1 and of the vertebral growth plate of S1. All stresses were quantified in the local referential system described by the middle of the growth plate of L5 as origin, the xy-plan is defined on the growth plate, y-axis oriented in the sagittal plane and the z-axis is normal to the plan in direction opposed to the gravity. A negative value of the normal stress signifies that it is in compression, whereas a positive value represents tension. The normal stress is associated to the growth modulation of the growth plate. A positive value of the shear stress indicates an increase of the risk of slippage, while a negative value decreases this risk.

Statistical analyses were performed using StatSoft's STATISTICA[®] software to determine if correlations exist between spino-pelvic parameters and stresses in the growth plate in conjunction with those measured in the intervertebral disc of the lumbosacral region. The correlations of greatest interest were investigated using an ANOVA test (with a level of significance set at $p = 0.05$) in order to explore existing relations between the spino-pelvic parameters and stresses in the spondylolisthesis progression.

Prior to the analyses, the model was validated using the published data of Sairyo et al. [8]. The model was adapted to compare the maximal normal stress of the growth plate and the endplate of L5 with those measured by Sairyo et al. [8,9]. To do so, a low grade spondylolisthesis shear type (PI = 61°, SS = 52°, PT = 9°) was reconstructed without sacral dome. The normal stresses in the growth plate and endplate were evaluated under physiological loading conditions using a follower load technique (Figure 2).

Results

For the validation study, the maximal normal stress in the sagittal plane was 1.5 MPa for the growth plate of L5 and 5.34 MPa for the endplate. The difference with the results of Sairyo was 1.9 MPa and 5.8 MPa respectively for the maximal normal stress for the growth plate and for the endplate [9].

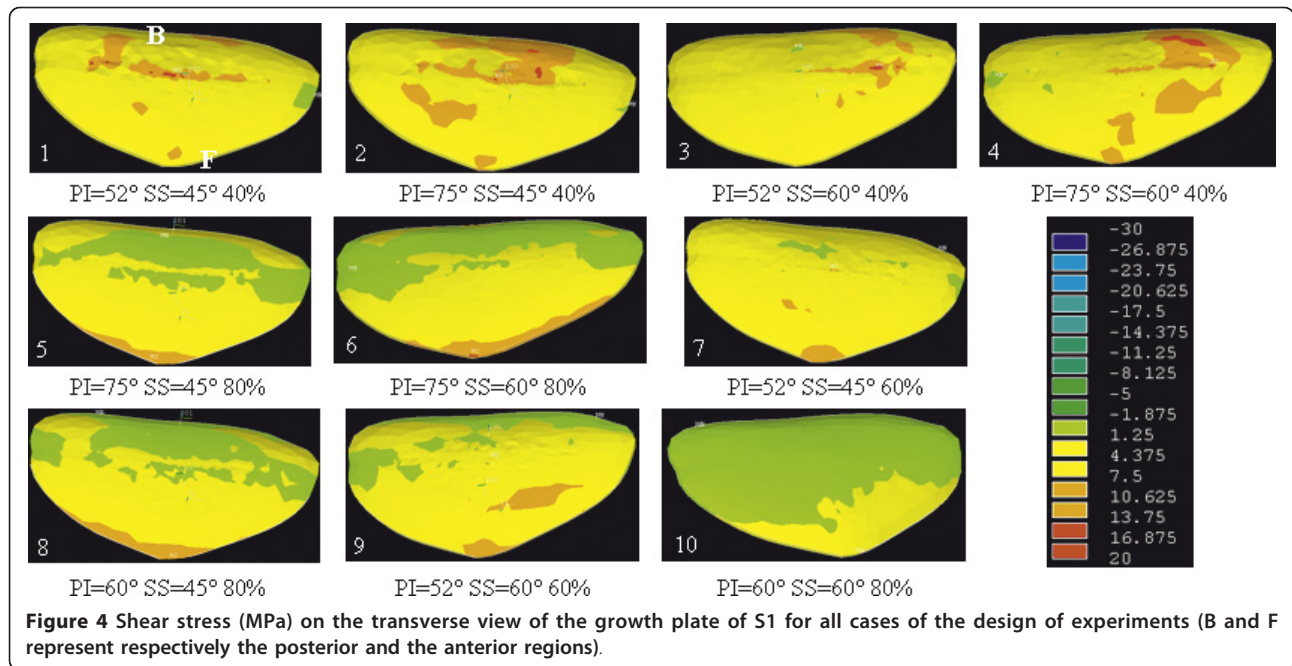
The study of low grade spondylolisthesis revealed significant differences in terms of stress distribution within

the growth plate and the intervertebral disc in a spine defined by a lumbosacral junction between the nutcracker- (PI = 52°, SS = 45°) and shear-type (PI = 75°, SS = 60°) cases (Additional file 4: cases 1 and 4). Within the growth plate of the shear-type model, the shear and compression stresses were 26% and 16% higher than that of the nutcracker-type respectively. In the intervertebral disc, the shear stress measured was 5.6% higher than that of the nutcracker-type. Therefore, there was an average 16% increase of stresses between the nutcracker- and shear-type models. The elevated stresses in low grade cases were mostly located around the dome-shaped area of the growth plate and intervertebral disc (Figures 4, 5 and 6). More precisely, there was an important concentration of shear and compression stresses at the center of the growth plate, especially in cases 1 and 2 (Figures 4 and 5). The stress concentration was shifted to the right side of the growth plate in cases 3 and 4 (Figures 4 and 5). However, the variation of the stress distribution in the intervertebral disc was homogeneous in every low grade case except the top of the dome shaped area which returned a lower stress magnitude (Figure 6, cases 1 to 4).

With the simulated high-grade configuration (slip percentage of 80%), elevated stresses were located at the anterior part of the growth plate and intervertebral disc (Figures 4, 5 and 6: cases 5, 6, 8 and 10) in comparison with the low grade configurations. There was important shear stress also in the posterior part of the disc for two cases (SS = 45° and PI = 75° or PI = 60°) (Figure 6: cases 5 and 8). In the additional file 5 there were two cases (PI = 60° and SS = 45° or 60°) of high grade spondylolisthesis which had a distinct shear stress in the intervertebral disc (cases 8 and 10) while the other cases were homogenous.

Within the high-grade configurations (slip percentage of 60%), the stress difference was important between two cases (Additional file 4: cases 7 and 9) that have a different SS. In the growth plate, the shear and compression stresses were respectively 12% and 14% higher for the case with a SS at 45° than the one at 60°. The shear and compression stresses were more located on the anterior part of the growth plate for the case with the smaller sacral slope (Figures 4 and 5: cases 7 and 9). The difference was less important for the shear stress in the intervertebral disc, as there was just a difference of 0.1 MPa in the two values (Additional file 4: cases 7 and 9). However, for case 7 with SS = 45°, the compression distribution is the same of a low grade with more compression stress on the sacral dome (Figure 6: cases 7 and 9).

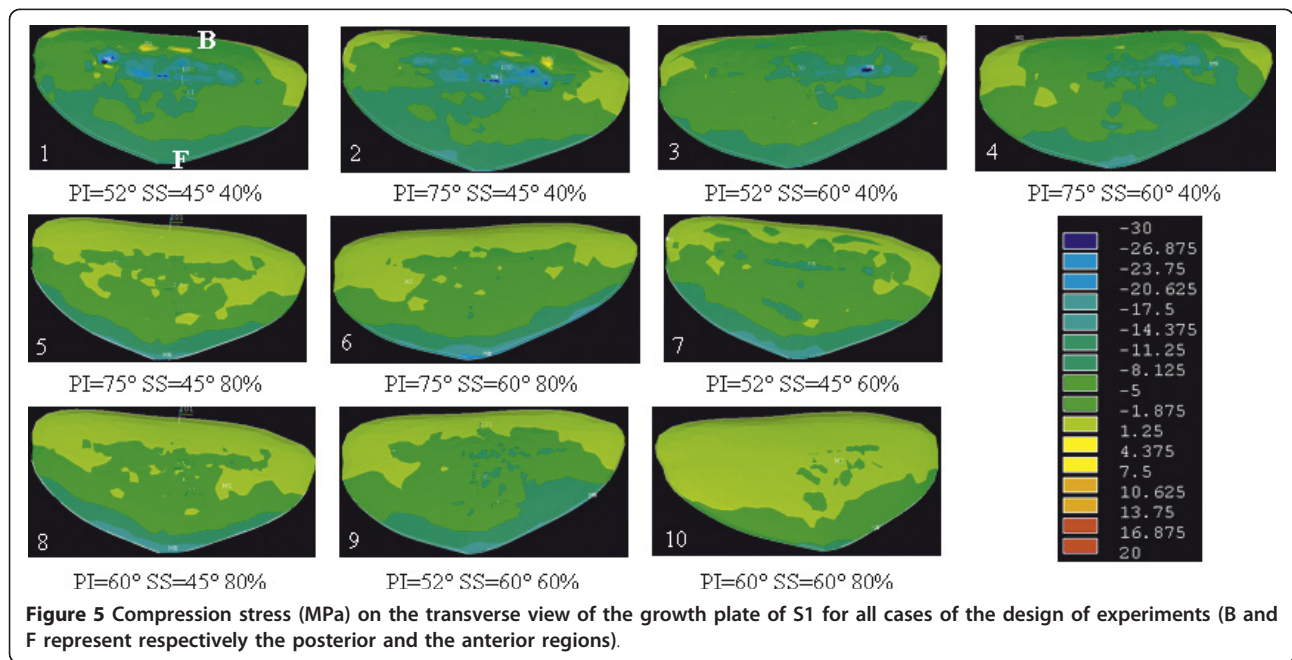
The pelvis balance in high grade configurations has a significant impact on the stress distribution (Additional file 4: cases 5 and 6). At the growth plate of the balanced pelvis (case 6), the shear and compression

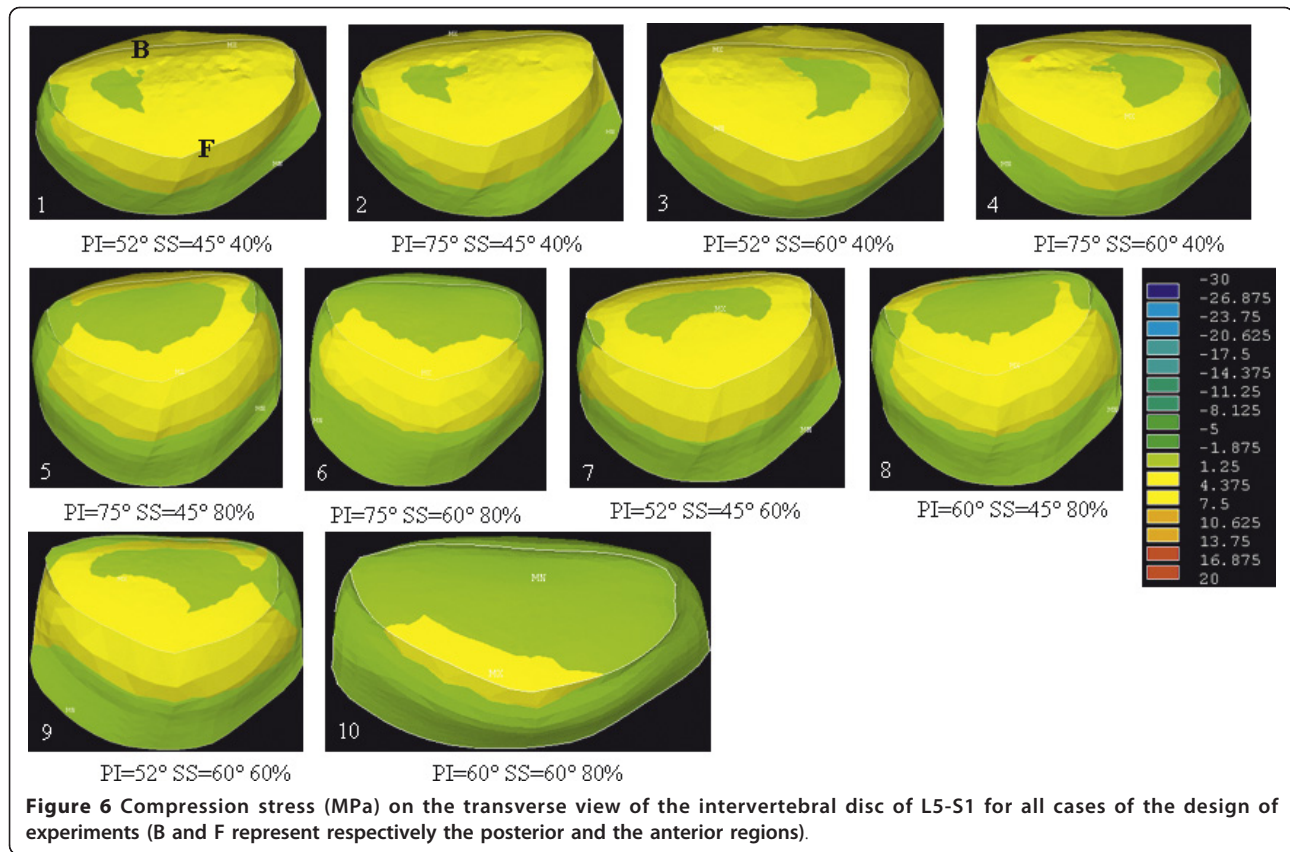


stresses were respectively 17.4% and 5.1% higher than the retroverted pelvis (case 5). In the intervertebral disc, the shear stress was quite similar between the two cases. The stress increase between the balanced and retroverted pelvis was in the order of 8.1%.

Significant correlations were found between pelvic incidence and the resulting stresses (shear and compression stress in the growth plate and shear stress in the

intervertebral disc) with p -value < 0.05 (Additional file 5). In addition, a significant correlation was found between the slip percentage and the shear stress found in the intervertebral disc. In contrast, no correlation was found between compression and shear stresses in relation to the sacral slope. Similarly, there was no relation between stresses in the growth plate and the induced slip percentage ($p > 0.05$).





Discussion

In the present study, a shift in measured stresses in the lumbosacral junction was observed. These results are in accordance with clinical observations made by Rousouly et al. who made the association between shear stress and slippage at the L5-S1 disc [18]. In the model, the shear and normal stress distribution on the growth plate and intervertebral disc became greater at the anterior portion of the lumbosacral junction as the grade of spondylolisthesis increased. Stresses in simulated low grade cases occurred in front of the sacral dome and on the posterior part of the growth plate. The stresses moved to the anterior part of the intervertebral disc and growth plate for the simulated higher grade configurations. The increase of the compression stress could be explained by the more gravitational (vertical) loads sustained by the case with the smallest SS. The increased shearing stress might be coming from the need of global posture balance. From statics' point of view, the patient's body topology, body weight, and the presence of obesity are also important factors of the intervertebral stresses. Further studies will be needed to fully understand this particular scenario.

The lumbosacral junction is an important area in the study of the slippage of L5. The spondylolisthesis causes

a sagittal unbalance, so that forces (gravity and weight) are concentrated more on the anterior part of the lumbosacral junction and thus create more stresses and load in this area [13]. Therefore, differential stresses on the anterior vs. middle and posterior part of its growth plate could modify the bone growth rate distribution according to the Hueter-Volkman principle and may lead to a doming of the sacrum [34-38]. This sacral dome could then further increase sliding of the L5 vertebra and progression of the spondylolisthesis.

In addition, we have documented that the increase of stresses was related to the increase of slip percentage, supporting previous reports in the literature [39,40]. Although no validated physiological stress limits for lumbosacral intervertebral elements exist in the literature, and the limits should be, from the authors' opinion, highly individual-dependent, it is probable that the anterior stresses reported in this study exceed the maximum value of physiological stresses reported in the literature [41,42]. Based on the compression stress at the posterior part of the sacral endplate, we can anticipate that it could promote the formation of a sacral dome as discussed in the previous paragraph. The unbalance of forces promotes an increase of bone growth on the sacrum and as a result the formation of the sacral

dome. This formation explains the stress concentration on the dome for the compression. This also explains why the increase of stresses at the lumbosacral junction could lead to the formation of a sacral dome and therefore to further changes in pelvic incidence and sacral slope [7,13,17]. In the framework of the Hueter Volkman principle, the increase of compression at the anterior and posterior border of S1 endplate could promote the growth of the osseous doming and aids the sliding of L5 vertebra, and consequently the risk of progression [34-38,43]. Moreover, shear stress at the L5-S1 disc could further promote the slippage. The increased shear stress at the anterior surrounding area of the lumbosacral junction was 10% higher than the compression stress, so, their combined effect favors the sliding of the vertebrae and strengthens the idea that these types of stresses are associated with the risk of progression as hypothesized in previous reports [8,18,39].

This study had also demonstrated that there are significant correlations occurring between stresses and pelvic incidence, as well as with slippage of the vertebra. Since the spino-pelvic interaction is closely related to the stresses at the spino-pelvic junction, the correlation between the stresses and the spino-pelvic parameters revealed in this study can be used for predicting spondylolisthesis progression [44-49]. This study, along with others, suggests that pelvic incidence is an important biomechanical parameter to predict progression of spondylolisthesis [1,2,50].

The model used in this study has several limitations which need to be recognized when interpreting the results. For instance, the materials properties of spinal tissues were not specific to spondylolisthesis cases but taken from published values from cadaver spines [16,22,25-27,51]. Differences in the disc and bone stiffness may affect the stress distribution [18]. The model allows only the study of the immediate distribution of stress at the lumbosacral junction in a given posture and not the dynamic and long term response which occurs under growth, change of posture, physical daily activities, etc. The complete validation of such a model, as any FEM, is difficult. The partial assessment using the published results of Sairyo however provides confidence in the results and interpretation presented herein [8,9]. The study was based on one real spondylolisthesis case. The 10 patterns with various % slip and spino-pelvic were generated from this initial geometry (parametric model). The normal geometry of this patient was therefore unavailable for this study, as well as the normal L5 pars interarticularis of this patient was not documented by any medical imaging. Some of the findings from this study were specific to the particular case used, putting additional limitations to this study. Simulations of an additional number of

cases are necessary to generalize the findings. Since the biomechanical properties of the intervertebral elements undergoing degeneration are likely to be dependent on the degree of degeneration as a function of 3D location, the use of high field strength MRI in conjunction with biomechanical testing is envisaged to improve the model precision. The results of future biomechanical analysis could be compared to and presented side-by-side with clinical observations to provide clinicians with the insight of the related biomechanics in a more informative way.

Conclusions

The developed modeling approach is the only tool at the moment which enables to interpret biomechanically the spino-pelvic parameters in connection with the biomechanics of spondylolisthesis. The parameterization of different spino-pelvic parameters in a FEM is a first step in the modeling of spondylolisthesis. It allows analyzing and understanding the biomechanics according to different configurations of the pathology. Future biomechanical analyses of patient-specific cases, in addition to clinical assessment using radiographs, could offer complementary perspectives on the understanding of stress distribution that could lead to further progression of the deformity. This combined approach could eventually help surgeons to predict the spondylolisthesis progression in the clinical context and therefore to better plan and prepare the surgical treatment.

Additional material

Additional file 1: [table_1_sevrain_v_1.doc](#).

Additional file 2: [table_1_sevrain_v_2.doc](#).

Additional file 3: [table_1_sevrain_v_3.doc](#).

Additional file 4: [table_1_sevrain_v_4.doc](#).

Additional file 5: [table_1_sevrain_v_5.doc](#).

List of abbreviations

PI: Pelvic incidence; SS: sacral slope; PT: pelvic tilt; FEM: finite element model; BW: body weight

Acknowledgements

Research work was funded by the Natural Sciences and Engineering Research Council of Canada (Industrial Research Chair Program with Medtronic).

Author details

¹École Polytechnique, Université de Montréal, P.O. Box 6079, Station Centre-Ville, Montréal (Québec), H3C 3A7 CANADA. ²Research Center, Sainte-Justine University Hospital Center of Université de Montréal, 3175, Cote Sainte-Catherine Rd, Montréal (Québec), H3T 1C5 CANADA.

Authors' contributions

AS, CA, and HG have made substantial contributions to the study design, computer modeling, numerical simulations, analysis and interpretation of data. XW and HL have significantly contributed in drafting the manuscript

and revising it critically for important intellectual content. All authors read and approved the final manuscript

Competing interests

The authors declare that there are no financial and non-financial competing interests related to the publication of this manuscript.

Received: 4 October 2011 Accepted: 18 January 2012

Published: 18 January 2012

References

- Hanson DS, Bridwell KH, Rhee JM, Lenke LG: **Correlation of pelvic incidence with low- and high-grade isthmic spondylolisthesis.** *Spine* 2002, **27**:2026-9.
- Labelle H, Roussouly P, Berthonnaud E, et al: **Spondylolisthesis, pelvic incidence, and spinopelvic balance: a correlation study.** *Spine* 2004, **29**:2049-54.
- Natarajan RN, Garretson RB, Biyani A, Lim TH, Andersson GB, An HS: **Effects of slip severity and loading directions on the stability of isthmic spondylolisthesis: a finite element model study.** *Spine* 2003, **28**:1103-12.
- Sairy K, Katoh S, Ikata T, Fujii K, Kajijura K, Goel VK: **Development of spondylolytic olisthesis in adolescents.** *Spine J* 2001, **1**:171-5.
- Fredrickson BE, Baker D, McHolick WJ, Yuan HA, Lubicky JP: **The natural history of spondylolysis and spondylolisthesis.** *J Bone Joint Surg Am* 1984, **66**:699-707.
- Saraste H: **Spondylolysis and spondylolisthesis.** *Acta Orthop Scand Suppl* 1993, **251**:84-6.
- Mac-Thiong JM, Labelle H: **A proposal for a surgical classification of pediatric lumbosacral spondylolisthesis based on current literature.** *Eur Spine J* 2006, **15**:1425-35.
- Sairy K, Goel VK, Masuda A, et al: **Three dimensional finite element analysis of the pediatric lumbar spine. Part II: biomechanical change as the initiating factor for pediatric isthmic spondylolysthes at the growth plate.** *Eur Spine J* 2006, **15**:930-5.
- Sairy K, Goel VK, Masuda A, et al: **Three-dimensional finite element analysis of the pediatric lumbar spine. Part I: pathomechanism of apophyseal bony ring fracture.** *Eur Spine J* 2006, **15**:923-9.
- Sairy K, Katoh S, Sakamaki T, et al: **Vertebral forward slippage in immature lumbar spine occurs following epiphyseal separation and its occurrence is unrelated to disc degeneration: is the pediatric spondylolisthesis a physis stress fracture of vertebral body?** *Spine* 2004, **29**:524-7.
- Farfan HF, Osteria V, Lamy C: **The mechanical etiology of spondylolysis and spondylolisthesis.** *Clin Orthop Relat Res* 1976, **40**:55.
- Reitman CA, Gertzbein SD, Francis WR Jr: **Lumbar isthmic defects in teenagers resulting from stress fractures.** *Spine J* 2002, **2**:303-6.
- Hresko MT, Labelle H, Roussouly P, Berthonnaud E: **Classification of high-grade spondylolystheses based on pelvic version and spine balance: possible rationale for reduction.** *Spine* 2007, **32**:2208-13.
- Vialle R, Ilharreborde B, Dauzac C, Lenoir T, Rillardon L, Guigui P: **Is there a sagittal imbalance of the spine in isthmic spondylolysthes? A correlation study.** *Eur Spine J* 2007, **16**:1641-9.
- Whitesides TE Jr, Horton WC, Hutton WC, Hodges L: **Spondylolytic spondylolisthesis: a study of pelvic and lumbosacral parameters of possible etiologic effect in two genetically and geographically distinct groups with high occurrence.** *Spine* 2005, **30**:S12-21.
- Konz RJ, Goel VK, Grobler LJ, et al: **The pathomechanism of spondylolytic spondylolisthesis in immature primate lumbar spines in vitro and finite element assessments.** *Spine* 2001, **26**:E38-49.
- Labelle H, Roussouly P, Berthonnaud E, Dimnet J, O'Brien M: **The importance of spino-pelvic balance in L5-s1 developmental spondylolisthesis: a review of pertinent radiologic measurements.** *Spine (Phila Pa 1976)* 2005, **30**:S27-34.
- Roussouly P, Gollogly S, Berthonnaud E, Labelle H, Weidenbaum M: **Sagittal alignment of the spine and pelvis in the presence of L5-s1 isthmic lysis and low-grade spondylolisthesis.** *Spine* 2006, **31**:2484-90.
- Chosa E, Totoribe K, Tajima N: **A biomechanical study of lumbar spondylolysis based on a three-dimensional finite element method.** *J Orthop Res* 2004, **22**:158-63.
- Panjabi MM, Oxland TR, Yamamoto I, Crisco JJ: **Mechanical behavior of the human lumbar and lumbosacral spine as shown by three-dimensional load-displacement curves.** *J Bone Joint Surg Am* 1994, **76**:413-24.
- Yamamoto S, Tanaka E, Mihara K, Inoue H, Ohmori K: **Finite element evaluation of spondylolysis taking account of nonlinear mechanical properties of ligaments and annulus fibrosus.** *JSME international journal. Series C, Mechanical systems, machine elements and manufacturing* 1999, **42**:521-31.
- El-Rich M, Villemure I, Labelle H, Aubin CE: **Mechanical loading effects on isthmic spondylolytic lumbar segment: finite element modelling using a personalised geometry.** *Comput Methods Biomech Biomed Engin* 2009, **12**:13-23.
- Kadoury S, Cherié F, Laporte C, Labelle H: **A versatile 3D reconstruction system of the spine and pelvis for clinical assessment of spinal deformities.** *Med Biol Eng Comput* 2007, **45**:591-602.
- Delorme S, Petit Y, de Guise JA, Labelle H, Aubin CE, Dansereau J: **Assessment of the 3-d reconstruction and high-resolution geometrical modeling of the human skeletal trunk from 2-D radiographic images.** *IEEE Trans Biomed Eng* 2003, **50**:989-98.
- Aubin CE, Dansereau J, Parent F, Labelle H, de Guise JA: **Morphometric evaluations of personalised 3D reconstructions and geometric models of the human spine.** *Med Biol Eng Comput* 1997, **35**:611-8.
- Beausejour M, Aubin CE, Feldman AG, Labelle H: **[Simulation of lateral bending tests using a musculoskeletal model of the trunk].** *Ann Chir* 1999, **53**:742-50.
- Huynh AM, Aubin CE, Mathieu PA, Labelle H: **Simulation of progressive spinal deformities in Duchenne muscular dystrophy using a biomechanical model integrating muscles and vertebral growth modulation.** *Clin Biomech (Bristol, Avon)* 2007, **22**:392-9.
- Sylvestre PL, Villemure I, Aubin CE: **Finite element modeling of the growth plate in a detailed spine model.** *Med Biol Eng Comput* 2007, **45**:977-88.
- Villemure I, Stokes IA: **Growth plate mechanics and mechanobiology. A survey of present understanding.** *J Biomech* 2009, **42**:1793-803.
- Schultz A, Andersson G, Ortengren R, Haderspeck K, Nachemson A: **Loads on the lumbar spine. Validation of a biomechanical analysis by measurements of intradiscal pressures and myoelectric signals.** *J Bone Joint Surg Am* 1982, **64**:713-20.
- Patwardhan AG, Havey RM, Meade KP, Lee B, Dunlap B: **A follower load increases the load-carrying capacity of the lumbar spine in compression.** *Spine* 1999, **24**:1003-9.
- Patwardhan AG, Meade KP, Lee B: **A frontal plane model of the lumbar spine subjected to a follower load: implications for the role of muscles.** *J Biomech Eng* 2001, **123**:212-7.
- Taylor N, Evans O, Goldie P: **Reliability of measurement of angular movements of the pelvis and lumbar spine during treadmill walking.** *Physiother Res Int* 2001, **6**:205-23.
- Mehlman CT, Araghi A, Roy DR: **Hyphenated history: the Hueter-Volkman law.** *Am J Orthop (Belle Mead NJ)* 1997, **26**:798-800.
- Stokes IA, Clark KC, Farnum CE, Aronsson DD: **Alterations in the growth plate associated with growth modulation by sustained compression or distraction.** *Bone* 2007, **41**:197-205.
- Stokes IA, Aronsson DD, Dimock AN, Cortright V, Beck S: **Endochondral growth in growth plates of three species at two anatomical locations modulated by mechanical compression and tension.** *J Orthop Res* 2006, **24**:1327-34.
- Stokes IA, Mente PL, Iatridis JC, Farnum CE, Aronsson DD: **Enlargement of growth plate chondrocytes modulated by sustained mechanical loading.** *J Bone Joint Surg Am* 2002, **84**-A:1842-8.
- Mau H: **Specification of corresponding growth laws of Hueter-Volkman and Pauwels (growth deformities) and their relation to deformities caused by loading.** *Z Orthop Ihre Grenzgeb* 1984, **122**:293-8.
- Hu SS, Tribus CB, Diab M, Ghanayem AJ: **Spondylolysthes and spondylolysis.** *Instr Course Lect* 2008, **57**:431-45.
- Huang RP, Bohlman HH, Thompson GH, Poe-Kochert C: **Predictive value of pelvic incidence in progression of spondylolysthes.** *Spine* 2003, **28**:2381-5, discussion 2385.
- Schmidt H, Shirazi-Adl A, Galbusera F, Wilke HJ: **Response analysis of the lumbar spine during regular daily activities—a finite element analysis.** *J Biomech* 2010, **43**:1849-56.

42. Sato K, Kikuchi S, Yonezawa T: **In vivo intradiscal pressure measurement in healthy individuals and in patients with ongoing back problems.** *Spine* 1999, **24**:2468-74.
43. Stokes IA, Spence H, Aronsson DD, Kilmer N: **Mechanical modulation of vertebral body growth. Implications for scoliosis progression.** *Spine (Phila Pa 1976)* 1996, **21**:1162-7.
44. Hammerberg KW: **New concepts on the pathogenesis and classification of spondylolisthesis.** *Spine* 2005, **30**:S4-11.
45. Haun DW, Kettner NW: **Spondylolysis and spondylolisthesis: a narrative review of etiology, diagnosis, and conservative management.** *J Chiropr Med* 2005, **4**:206-17.
46. Curylo LJ, Edwards C, DeWald RW: **Radiographic markers in spondyloptosis: implications for spondylolisthesis progression.** *Spine* 2002, **27**:2021-5.
47. Weir MR, Smith DS: **Stress reaction of the pars interarticularis leading to spondylolysis. A cause of adolescent low back pain.** *J Adolesc Health Care* 1989, **10**:573-7.
48. Motley G, Nyland J, Jacobs J, Caborn DN: **The pars interarticularis stress reaction, spondylolysis, and spondylolisthesis progression.** *J Athl Train* 1998, **33**:351-8.
49. Alyas F, Turner M, Connell D: **MRI findings in the lumbar spines of asymptomatic, adolescent, elite tennis players.** *Br J Sports Med* 2007, **41**:836-41; discussion 841.
50. Jackson RP, Phipps T, Hales C, Surber J: **Pelvic lordosis and alignment in spondylolisthesis.** *Spine* 2003, **28**:151-60.
51. Iatridis JC, ap Gwynn I: **Mechanisms for mechanical damage in the intervertebral disc annulus fibrosus.** *J Biomech* 2004, **37**:1165-75.

doi:10.1186/1748-7161-7-2

Cite this article as: Sevrain *et al.*: Biomechanical evaluation of predictive parameters of progression in adolescent isthmic spondylolisthesis: a computer modeling and simulation study. *Scoliosis* 2012 **7**:2.

**Submit your next manuscript to BioMed Central
and take full advantage of:**

- Convenient online submission
- Thorough peer review
- No space constraints or color figure charges
- Immediate publication on acceptance
- Inclusion in PubMed, CAS, Scopus and Google Scholar
- Research which is freely available for redistribution

Submit your manuscript at
www.biomedcentral.com/submit

