





RMD
OpenRheumatic &
Musculoskeletal
Diseases

ORIGINAL RESEARCH

Achieving pain control in early
rheumatoid arthritis with baricitinib
monotherapy or in combination with
methotrexate versus
methotrexate monotherapyPeter C. Taylor ¹, Rieke Alten ², Jose María Álvaro Gracia,³ Yuko Kaneko,⁴
Chad Walls,⁵ Amanda Quebe ⁵, Bochao Jia,⁵ Natalia Bello,⁵ Jorge Ross Terres,⁵
Roy Fleischmann ⁶

To cite: Taylor PC, Alten R, Álvaro Gracia JM, *et al.* Achieving pain control in early rheumatoid arthritis with baricitinib monotherapy or in combination with methotrexate versus methotrexate monotherapy. *RMD Open* 2022;**8**:e001994. doi:10.1136/rmdopen-2021-001994

The data from this study were presented in part at the American College of Rheumatology (ACR) Annual Scientific Meeting, Nov 3–8 2017 (Lee YC, Emery P, Bradley JD, *et al.* Remaining Pain in DMARD-Naive Rheumatoid Arthritis Patients Treated with Baricitinib and Methotrexate (abstract). *Arthritis Rheumatol*. 2017; 69 [suppl 10]).

Received 30 September 2021
Accepted 11 February 2022



► <http://dx.doi.org/10.1136/rmdopen-2021-002068>



© Author(s) (or their employer(s)) 2022. Re-use permitted under CC BY-NC. No commercial re-use. See rights and permissions. Published by BMJ.

For numbered affiliations see end of article.

Correspondence to
Professor Peter C. Taylor;
peter.taylor@kennedy.ox.ac.uk

ABSTRACT

Objectives This post hoc analysis assessed speed, magnitude and maintenance of pain improvement in patients with early rheumatoid arthritis (RA) receiving baricitinib, baricitinib and methotrexate (MTX), or MTX over 1 year. Cumulative pain and quality of life benefits were also assessed.

Methods Randomised, double-blind, phase 3 study RA-BEGIN (NCT01711359) compared baricitinib 4 mg (N=159), baricitinib 4 mg +MTX (N=215) and MTX (N=210) in patients with RA who had no or limited prior disease-modifying antirheumatic drug treatment. Pain was assessed on a 0–100 mm Visual Analogue Scale (VAS). Proportion of patients with ≥30%, ≥50% and ≥70% pain improvement from baseline; ≤20 mm and ≤10 mm on the pain VAS; and time to achieve pain improvement thresholds were assessed over 52 weeks, as were Patient Global Assessment (PtGA) and 36-Item Short Form Health Survey Physical Component Score (SF-36 PCS) outcomes.

Results Baricitinib monotherapy or combination with MTX provides greater (least square mean changes (LSM) from baseline –40 mm and –43 mm, respectively) and more rapid (median 12 and 8 weeks to ≥70% improvement, respectively) pain relief than MTX alone (LSM –31 mm, median 20 weeks to ≥70% improvement) over 52 weeks. Baricitinib, alone or combination, provides 9–10 additional weeks of limited to no pain, similar gain in achievable wellness measured through PtGA, and 5–7 additional weeks with change in SF-36 PCS ≥5 vs MTX over 1 year.

Conclusions Patients treated with baricitinib reported significantly greater and more rapid pain relief, more weeks with limited to no pain, and clinically meaningful improvements in physical health than patients treated with MTX alone over 1 year.

INTRODUCTION

Rheumatoid arthritis (RA) is a systemic inflammatory disease associated with progressive and irreversible joint damage caused by

Key messages

What is already known about this subject?

- Patient-reported pain is common in rheumatoid arthritis (RA), even in patients who have achieved effective disease control.
- Baricitinib, an oral selective inhibitor of Janus kinase (JAK)1 and JAK2 indicated for the treatment of moderate to severe active RA, has been shown to provide greater improvements in patient-reported pain severity than methotrexate (MTX) or adalimumab.

What does this study add?

- Patients treated with baricitinib, as monotherapy or in combination with MTX, reported greater pain relief and a more rapid attainment of clinically meaningful thresholds of pain improvement than patients who received MTX monotherapy over 1 year of treatment.
- Baricitinib, as monotherapy or in combination with MTX, provided an additional 9–10 weeks of effectively pain-free life, a similarly increased duration of achievable wellness, and 5–7 additional weeks in which clinically meaningful thresholds in physical health were reached compared with MTX monotherapy over 1 year of treatment.

How might this impact on clinical practice or further developments?

- Baricitinib for the treatment of RA can provide greater improvements in patient-reported pain and quality of life than MTX, a first-line standard-of-care in RA.

chronic inflammation. Structural damage generally begins early in the disease course and progression can lead to reduced functional ability.¹

Patient-reported pain is common in RA, even in patients who have achieved inflammatory remission as assessed through standard metrics used in clinical practice^{2, 3};

improvements in disease activity may account for only 40% of the reported improvement in pain.⁴ This implies that not all of the pain experienced by patients with RA is solely the result of inflammation, and controlling inflammation does not completely eliminate pain in most patients. Furthermore, this points to a patient-focused challenge of overlooking subjectively reported pain by treating to a disease activity target alone.

RA generally has a substantial impact on a patient's perception of their quality of life (QoL)⁵ and pain plays a large role in this. Bodily pain is one of the variables of the 36-Item Short Form Health Survey (SF-36), a validated measure of health-related QoL (HRQoL) in many RA clinical investigations.^{6–8} There are several studies that have shown a stronger association of reduction in function with pain than with radiographic damage.^{9,10}

Many physicians focus on treating the underlying inflammation in RA but pain control is often reported as the main concern for patients, particularly in the early disease stage.^{11,12} It is now understood that, even with effective control of inflammation, pain in RA is due to non-inflammatory mechanisms or dysregulation of pain regulatory pathways (ie, peripheral and central sensitisation).^{13–15} Janus kinase (JAK) inhibitors are targeted synthetic disease-modifying antirheumatic drugs (tsDMARDs), which are effective in limiting inflammation of RA and may additionally have direct action on non-inflammatory pain mechanisms.¹⁶

Baricitinib is an oral selective inhibitor of JAK1 and JAK2 indicated for the treatment of moderate to severe active RA in adult patients who do not respond adequately or are intolerant to one or more DMARDs. It can be used as monotherapy or in combination with other conventional synthetic DMARDs (csDMARDs), including methotrexate (MTX). Baricitinib, alone or in combination with MTX, has demonstrated superior efficacy to MTX monotherapy in patients with RA who had no or limited prior DMARD therapy.¹⁷ As well as the effect on inflammation control, baricitinib has been shown to provide greater improvements in pain than MTX or adalimumab.^{18–20}

The objective of this study is to comparatively assess the effect size and time to achievement of clinically relevant pain improvement outcomes with baricitinib monotherapy, baricitinib +MTX, and MTX monotherapy and understand the improvement in QoL at the population level by treatment over 1 year. This DMARD-naïve population has the potential to robustly respond to both baricitinib and MTX, facilitating assessment of effect size between these two treatments.

METHODS

Patients and study design

RA-BEGIN (NCT01711359) was a phase 3, 52-week randomised, double-blind active comparator-controlled study investigating the effect of MTX monotherapy, baricitinib monotherapy or the combination of MTX and baricitinib in patients with RA who had no or limited

prior DMARD treatment. A detailed description of the study design has been previously published.¹⁷

Patients were ≥ 18 years with moderate-to-severely active, adult-onset early RA defined by the ACR/EULAR 2010 criteria,²¹ and had no or limited prior treatment with DMARDs or had no more than three prior doses of MTX. Active disease was defined by: $\geq 6/68$ tender and $\geq 6/66$ swollen joints, serum high-sensitivity C reactive protein ≥ 3.6 mg/L (upper limit of normal 3.0 mg/L), and seropositive for rheumatoid factor or anti-citrullinated protein antibody.

Patients in the intention-to-treat population (N=588) were randomised in a ratio of 4:3:4 to receive MTX monotherapy (orally, administered once weekly), baricitinib monotherapy (4 mg administered once daily), or baricitinib and MTX in combination for 52 weeks. Patients receiving MTX were started at 10 mg/week, which was increased to 20 mg by week 8 if tolerated. In patients for whom a lower dose was indicated/required, an initial dose of 7.5 mg/week was available with a maximum dose of 12.5 mg.

From week 24, rescue treatment of baricitinib plus MTX was available for patients whose tender and swollen joint counts did not improve by $\geq 20\%$ from baseline.

Outcomes

Pain was assessed by the patient's assessment of pain Visual Analogue Scale (VAS; 0–100 mm where 0=no pain and 100=worst possible pain) at weeks 1, 2 and 4, every four weeks out to week 24 and weeks 32, 40 and 52. Clinically meaningful thresholds of remaining pain were selected for analysis in this study. Pain VAS ≤ 10 mm reflects a threshold of limited pain to no pain and is extrapolated from data by Wells *et al.*²² The ≤ 20 mm threshold represents a level of pain at which satisfaction with health is not negatively affected,^{22,23} and is referred to in this analysis as 'mild pain'. Patients who meet these thresholds of remaining pain have been shown to have an acceptable level of pain which allows them to function relatively normally.

Patient pain is a component of the physical HRQoL which was assessed by the Physical Component Score (PCS) of the SF-36 at baseline, every four weeks out to week 24, and weeks 32, 40 and 52.

Pain also is a component of the Patient's Global Assessment of Disease Activity (PtGA), which was assessed using a VAS (0–100 mm). Patients were asked to give an overall assessment of how their RA was affecting them, with higher scores indicating poorer status or more active disease.

For each scale, the change from baseline to week 12, week 24 and week 52 was assessed, and the change from baseline through week 52 in the summary scores for the PCS of the SF-36 was calculated.

Area under the curve (AUC) analysis of responder curves to week 52 was carried out to determine the cumulative duration of clinically relevant thresholds of

improvement in pain, physical HRQoL, and patient-assessed disease activity achieved by study participants.

Statistical analyses

All analyses were conducted on the modified intention-to-treat populations, which included the data from patients who received ≥ 1 dose of study drug, regardless of whether they completed the trial. Missing values and data after rescue were imputed with last observation carried forward (LOCF) for all analyses where applicable. P values were nominal as they were not adjusted for multiplicity.

Between-group comparisons were made on the mean change in pain VAS from baseline and the AUC using analysis of covariance. For the comparisons on the proportion of patients achieving pain improvement and remaining pain thresholds at multiple visits, the logistics regression models were applied. Both models adjusted treatment, region, baseline joint erosion status (yes/no), and baseline pain VAS score. The median time needed for patients to achieve pain improvement thresholds were assessed through week 52 using the cumulative incidence estimate with ‘competing risks,’ which included rescue or discontinuation due to lack of efficacy before reaching the pain improvement threshold. The Cox proportional hazards model with ‘competing risks’ (proportional subdistribution hazards model) was used to obtain the HR.^{24 25}

RESULTS

Patients

A total of 588 adult patients with active RA and no or limited prior DMARD treatment were randomised: 210 received MTX monotherapy, 215 received baricitinib 4mg plus MTX and 159 received baricitinib 4mg monotherapy.

Patient characteristics and disease activity at baseline have been previously described in detail.¹⁷ The median duration of RA was 0.2 years across treatment groups and 30%–39% of patients were receiving concomitant corticosteroids. Patients had high disease activity (mean CDAI score of 40 and DAS28-high-sensitivity C reactive protein of 5.9), mean pain of 66 mm on the 100 mm VAS, and reduced physical HRQoL (mean SF-36 PCS of 32) at baseline.

Pain outcomes

A statistically significant improvement in pain from baseline was achieved by patients treated with baricitinib as monotherapy or in combination with MTX as early as week 2 (first measurement) when compared with MTX monotherapy ($p < 0.001$ for both baricitinib treatment groups vs MTX; **figure 1**). The magnitude of pain improvement with baricitinib observed at week 12 was similar to that at week 52; similar improvement was achieved by both baricitinib monotherapy and baricitinib plus MTX.

As well as a greater change in pain from baseline, a significantly greater number of patients treated with

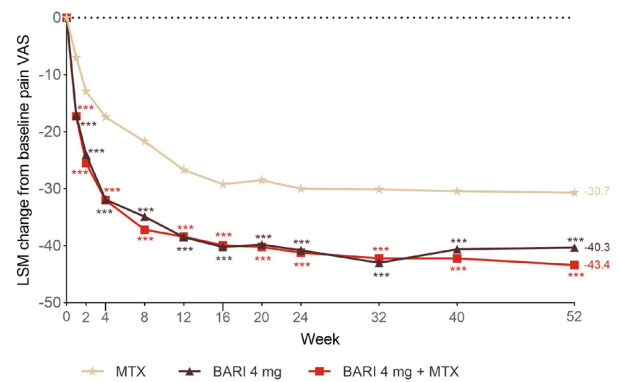


Figure 1 Least squares mean change from baseline in pain VAS over time. *** $p < 0.001$ vs MTX. BARI, baricitinib; LSM, least squares mean; MTX, methotrexate; VAS, Visual Analogue Scale.

baricitinib as monotherapy or in combination with MTX achieved pain improvements that met clinically meaningful thresholds when compared with those who received MTX alone (**figure 2A**). At week 24, 77.9% ($p = 0.021$ vs MTX) and 80.8% ($p < 0.001$ vs MTX) of patients receiving baricitinib monotherapy and baricitinib plus MTX, respectively, achieved a meaningful improvement²⁶ of $\geq 30\%$ in pain from baseline compared with 67.3% of patients receiving MTX monotherapy. A substantial improvement²⁶ in pain of $\geq 50\%$ from baseline was seen in 53.5%, 67.7% ($p = 0.004$ vs MTX) and 69.7% ($p < 0.001$ vs MTX) of patients treated with MTX monotherapy, baricitinib monotherapy and baricitinib plus MTX, respectively. Pain relief of $\geq 70\%$ from baseline was achieved by 32.7%, 50.0% ($p < 0.001$ vs MTX), and 50.5% ($p < 0.001$ vs MTX) of patients treated with MTX monotherapy, baricitinib monotherapy and baricitinib plus MTX, respectively.

The cumulative incidence of patients achieving 30%, 50% and 70% pain improvement are also shown (**figure 2B–D**, respectively) along with the median time to reach these outcomes (**figure 2E**). Patients who received either baricitinib monotherapy or baricitinib plus MTX achieved these pain improvement thresholds faster than patients who were treated with MTX monotherapy. The median time to achieve 30% pain improvement was 2 weeks for baricitinib alone and baricitinib plus MTX ($p < 0.001$ vs MTX) compared with 4 weeks for MTX (**figure 2E**). Median time to achieve 50% pain improvement was 4 weeks for both baricitinib treatment groups ($p < 0.001$ vs MTX) and 12 weeks for MTX monotherapy. Median time to achieve pain improvement of 70% was 8 ($p < 0.001$ vs MTX) and 12 ($p < 0.001$ vs MTX) weeks for baricitinib in combination with MTX and as monotherapy, respectively, and 20 weeks for patients treated with MTX alone.

A larger proportion of patients treated with baricitinib achieved thresholds of remaining pain equivalent to limited pain to no pain (≤ 10 mm)²² or mild pain

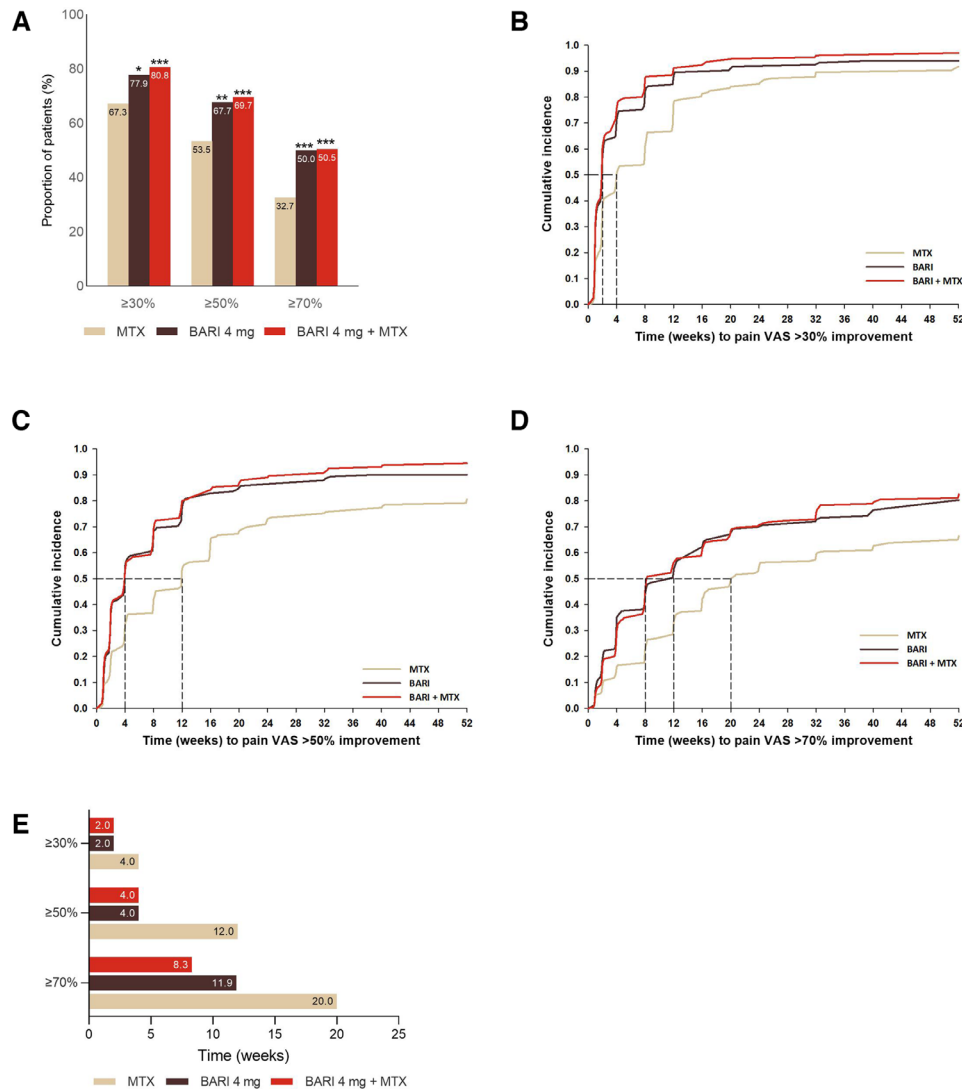


Figure 2 (A) Proportion of patients who achieved thresholds of $\geq 30\%$, $\geq 50\%$ and $\geq 70\%$ improvement in pain VAS at week 24. (B–D) Time to event analysis depicting the cumulative proportion of patients who achieved $\geq 30\%$, $\geq 50\%$ and $\geq 70\%$ improvement in pain VAS scores, respectively, over 52 weeks. (E) Median time for patients to achieve $\geq 30\%$, $\geq 50\%$ and $\geq 70\%$ improvement in pain VAS. * $P < 0.05$, ** $p < 0.01$, *** $p < 0.001$ vs MTX. BARI, baricitinib; MTX, methotrexate; VAS, Visual Analogue Scale.

(≤ 20 mm)^{27 28} at week 24 and week 52 (figure 3). By week 52 of the study, more than half of the patients who were treated with baricitinib monotherapy (56.6%, $p = 0.001$ vs MTX) or baricitinib plus MTX (58.9%, $p < 0.001$ vs MTX) achieved pain VAS scores of ≤ 20 mm compared with 38.8% of patients who received MTX monotherapy. A pain VAS score of ≤ 10 mm was achieved by 40.9% ($p < 0.001$ vs MTX) and 42.1% ($p < 0.001$ vs MTX) of patients treated with baricitinib monotherapy and baricitinib plus MTX, respectively, at week 52 compared with 23.0% of patients treated with MTX alone.

Cumulative assessment of patient-reported outcomes

The proportion of patients who reached the ≤ 10 mm (limited pain to no pain) and ≤ 20 mm (mild pain) remaining pain thresholds over the duration of the 52-week study is shown in figure 4A,C. A higher proportion of patients who were treated with baricitinib alone

or in combination with MTX achieved these meaningful improvements in pain when compared with patients who were treated with MTX monotherapy. To determine the cumulative effects of treatment on pain relief throughout the study duration, the area under the pain response curve was calculated to represent the average number of weeks the study population spent below these pain thresholds. By analysing the AUC, it was determined that patients treated with baricitinib monotherapy or baricitinib plus MTX had more cumulative time spent with pain scores below these clinically meaningful thresholds of ≤ 10 mm (8.9 additional weeks vs MTX over the 52-week treatment period, $p < 0.001$, and 9.8 additional weeks vs MTX, $p < 0.001$, respectively; figure 4B) and ≤ 20 mm (8.9 additional weeks vs MTX, $p < 0.001$, and 10.4 additional weeks vs MTX, $p < 0.001$, respectively; figure 4D) than patients

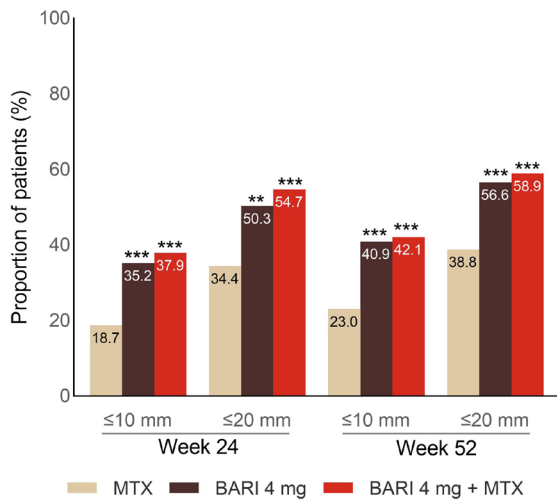


Figure 3 Percentage of patients meeting thresholds of remaining pain (VAS) at week 24 and week 52 by treatment group. ** $p < 0.01$, *** $p < 0.001$ vs MTX. BARI, baricitinib; MTX, methotrexate; VAS, Visual Analogue Scale.

who received MTX monotherapy over the course of the 52-week treatment period.

Another important patient-reported outcome (PRO) in RA is PtGA, which assesses the patient's perceptions of disease activity. Pain is one of the main drivers of

PtGA, accounting for approximately 76% of variability, with physical function and fatigue also contributing.^{29,30} When the AUC is analysed for the proportion of patients achieving ≤ 10 mm PtGA scores (figure 5A), it was determined that patients who received baricitinib monotherapy or baricitinib plus MTX had more cumulative time with PtGA below this threshold (17.7 weeks, $p < 0.001$ vs MTX for both groups) than patients treated with MTX monotherapy (9.6 weeks; figure 5B) over the 52-week treatment duration. Similarly, when considering participants who achieved a PtGA score of ≤ 20 mm (figure 5C), a threshold that is considered to be representative of low disease activity,²⁸ AUC analysis shows that patients treated with baricitinib plus MTX or baricitinib monotherapy had on average 26.9 weeks ($p < 0.001$ vs MTX) and 25.3 weeks ($p < 0.001$ vs MTX), respectively, with scores below this threshold, compared with 16.6 weeks achieved by patients who received MTX alone (figure 5D).

The SF-36 scale is a validated PRO to evaluate HRQoL, and the PCS summary scale was used in this analysis to measure the patient's perception of overall physical health alongside the improvements in other PROs. As with pain and PtGA, a statistically greater proportion of patients treated with baricitinib as monotherapy or in combination with MTX achieved the minimal clinically important differences of change from baseline ≥ 5 in SF-36 PCS when compared with patients who received MTX only

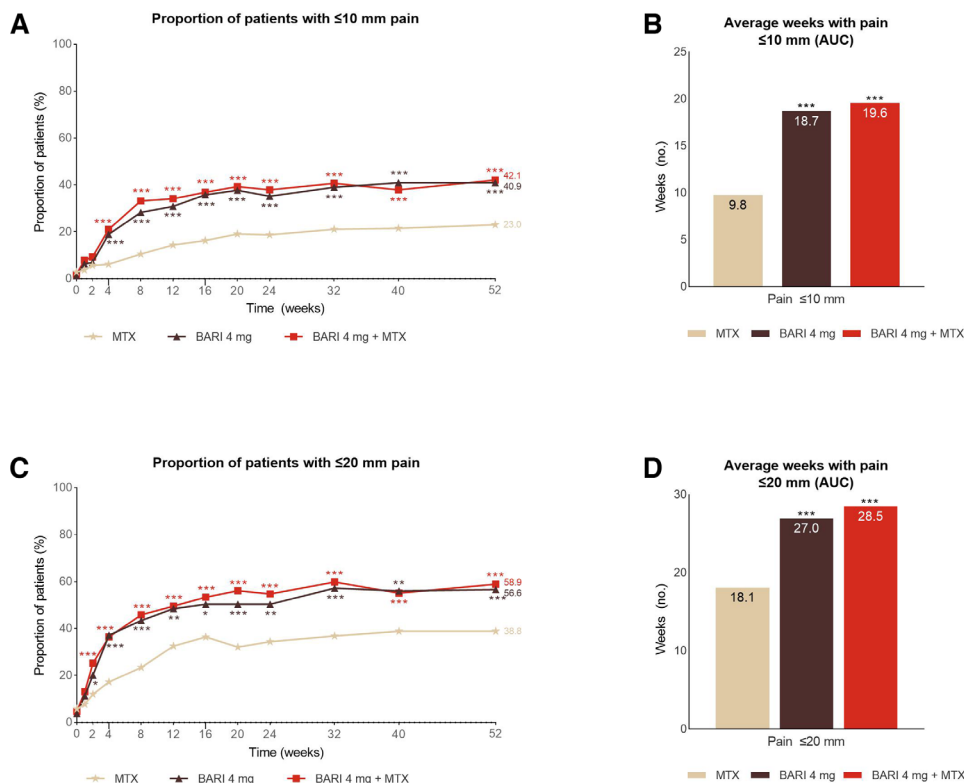


Figure 4 (A) The proportion (%) of patients with ≤ 10 mm pain, and (B) average number of weeks with pain Visual Analogue Scale (VAS) ≤ 10 mm per treatment group over 52 weeks calculated by area under the curve (AUC) analysis of the curve in (A). (C) The proportion (%) of patients with ≤ 20 mm pain and (D) average number of weeks with pain VAS ≤ 20 mm per treatment group over 52 weeks calculated by AUC analysis of the curve in (C). * $P < 0.05$, ** $p < 0.01$, *** $p < 0.001$ vs MTX. BARI, baricitinib; MTX, methotrexate.

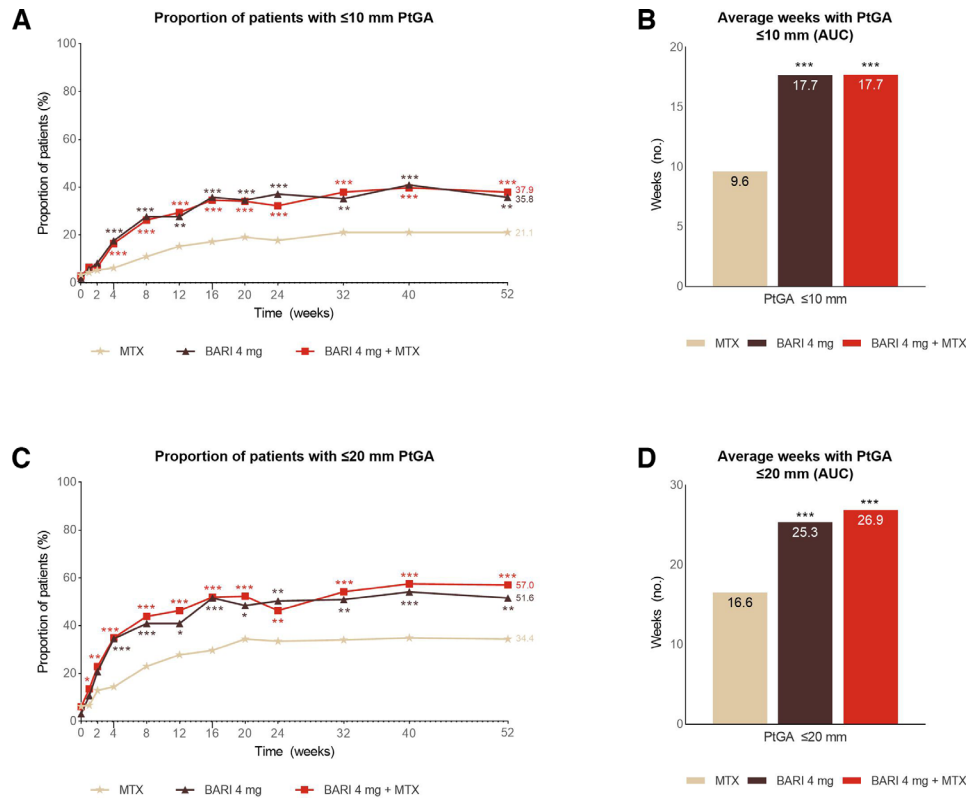


Figure 5 (A) The proportion (%) of patients with ≤10mm PtGA and (B) average number of weeks with PtGA ≤10mm per treatment group over 52 weeks calculated by AUC analysis of the curve in (A). (C) The proportion (%) of patients with ≤20mm PtGA and (D) average number of weeks with PtGA ≤20mm per treatment group over 52 weeks calculated by AUC analysis of the curve in (C). *P<0.05, **p<0.01, ***p<0.001 vs MTX. AUC, area under the curve; BARI, baricitinib; MTX, methotrexate; PtGA, Patient Global Assessment.

(figure 6A). AUC analysis shows that patients receiving baricitinib treatment met this threshold for an average of 39.1 weeks (baricitinib plus MTX, p<0.001 vs MTX) and 36.7 weeks (baricitinib monotherapy, p=0.008 vs MTX), compared with an average of 31.8 weeks for patients treated with MTX only (figure 6B).

DISCUSSION

The aim of this study was to determine whether treatment of patients who had limited to no prior treatment

with DMARDs with baricitinib 4mg, as monotherapy or in combination with MTX, early in the disease course of RA resulted in more rapid, greater, and sustained improvements in patient-reported pain than MTX treatment alone. The importance of the patient population under study is that this population has the potential to robustly respond to all active treatments, allowing for a proper assessment of the effect size between the active treatments. Further, roughly one-third of the patients across the treatment arms were being treated

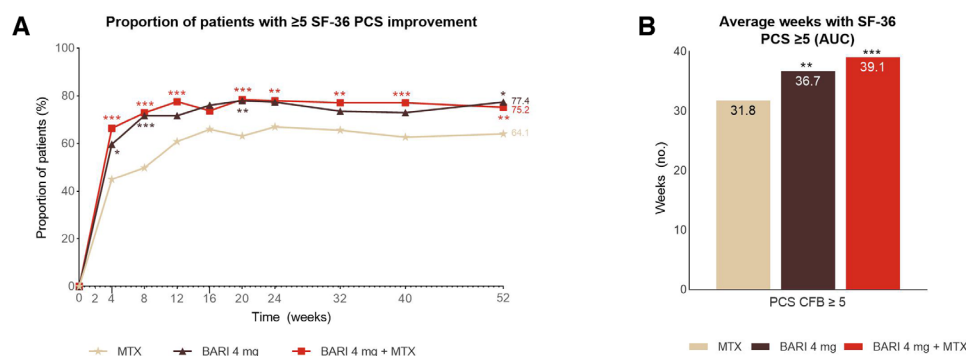


Figure 6 (A) The proportion (%) of patients with ≥5 points SF-36 PCS improvement and (B) average number of weeks spent with ≥5 points improvement in SF-36 PCS per treatment group over 52 weeks calculated by AUC analysis of the curve in (A). *P<0.05, **p<0.01, ***p<0.001 vs MTX. AUC, area under the curve; BARI, baricitinib; CFB, change from baseline; MTX, methotrexate; PCS, Physical Component Score; SF-36, Short Form-36.

concomitantly with corticosteroids, reflecting a common 'corticosteroid-bridging' clinical practice in early RA and that MTX treatment, and associated outcomes, was aided by corticosteroids in a subset of the cohort.³¹

Patients who received baricitinib as monotherapy or in combination with MTX showed greater and more rapid pain improvements than patients who received MTX alone, with higher proportions of patients achieving clinically meaningful thresholds of pain improvement and fewer patients with remaining pain after 52 weeks of treatment. Across PRO outcomes, the responses observed with baricitinib monotherapy were similar to baricitinib plus MTX combination. Results show that MTX monotherapy does provide pain relief for patients; however, the improvements in pain are not as profound in magnitude or speed as those achieved in the baricitinib treatment arms over 24–52 weeks of observation.

While baricitinib and MTX are both effective at controlling clinical signs of RA,¹⁷ patients treated with baricitinib as monotherapy or combination, due to its rapid and sustained improvement in pain, experience longer cumulative durations with pain below clinically significant thresholds over the course of the study. The thresholds of ≤ 10 mm and ≤ 20 mm on the pain VAS were chosen as patients who meet these thresholds are considered to be living an effectively pain-free life, with a score of 10 mm on the pain VAS determined to be a cut-off point for minimal pain in patients with RA.²² These patients also experience greater cumulative durations with outcomes below clinically significant thresholds of perceived physical health and disease activity, as measured by SF-36 PCS and PtGA. The similarity between the outcomes for pain and PtGA emphasises the importance of perceived pain in an individual's subjective evaluation of their disease status and supports the known correlation between pain and patient assessment of disease activity, which has previously been reported in other studies.^{28 30 32}

This research builds on analysis of data from RA-BEAM, which demonstrated the effect of baricitinib on patient-reported pain in participants who have previously had an inadequate response to MTX.^{18 20} In RA-BEGIN, a population of patients early in the RA disease course were treated. These patients had limited to no prior DMARD treatment, therefore a full response to MTX would be expected in many of these patients. Further, one-third of the MTX-treated patients were treated concomitantly with corticosteroids which may have contributed to a more rapid and robust clinical response, both in terms of improvement in disease activity and PRO (pain, physical function, other), in this cohort. As these patients were enrolled early in the RA disease course, they may also be more responsive to changes in the outcomes of this study as they are unlikely to have significant irreversible consequences of longstanding disease. Patients who received baricitinib, alone or in combination with MTX, showed greater reduction in measures of pain than patients who received MTX monotherapy. This suggests that baricitinib has a greater impact on pain relief than

MTX, which is consistent with evidence supporting the overarching involvement of the JAK/signal transducer and activator of transcription (STAT) pathway in physiological pain mechanisms.¹⁶

Many cytokines involved in the pathogenesis of RA signal through the JAK/STAT pathway, including interleukin (IL)-4, IL-6, IL-10, IL-17, and granulocyte-macrophage colony-stimulating factor (GM-CSF). These signalling molecules may also be involved in pain signalling and central sensitisation, where they can mitigate pain (IL-4, IL-10) or enhance pain sensitivity (IL-6, IL-17, GM-CSF).¹⁶ Other cytokines that have been implicated in pain, such as tumour necrosis factor- α and IL-1 β , do not signal directly through the JAK/STAT pathway but may have their signalling effects modulated by its inhibition.¹⁶

The similarity of results in the baricitinib monotherapy and baricitinib plus MTX treatment arms suggests that baricitinib itself is responsible for the majority of the effect, as there was no significant additional benefit specific to pain relief provided by the addition of MTX. This rapid onset of efficacy with regards to management of pain could reduce the need for corticosteroid bridging with MTX treatment and the associated challenges with short- and long-term toxicity/safety of this practice in patients with early disease when initiating treatment.³¹ Though MTX with corticosteroid bridging is a common and effective clinical practice in early RA,³¹ this study is unable to address a comparative efficacy question, including with pain outcomes, between baricitinib monotherapy, MTX monotherapy and MTX plus corticosteroids.

This analysis has several limitations. Post hoc analyses are exploratory in nature and are aimed towards hypothesis generation rather than demonstration of fact. Each end point was only assessed using a single measure. LOCF imputation was prespecified in this trial as the method for handling missing data, however, current approaches use multiple imputation methods. There is a high correlation reported between two outcomes assessed, pain and PtGA. Patient-reported symptoms may not be reported consistently and should be interpreted with caution. In clinical practice, patients typically begin treatment with MTX as monotherapy or in combination with other csDMARDs or biological DMARDs prior to the use of tsDMARDs such as baricitinib. However, to investigate the true effect size between active treatments, a patient population with no or limited prior treatment is most suitable. The dosage of MTX was limited to 20 mg once weekly and was not adjusted in patients with an inadequate response to treatment. Additional benefits of a higher dose of MTX cannot be excluded.

In conclusion, baricitinib showed rapid and sustained improvements for pain, PtGA and SF-36 PCS compared with MTX monotherapy during this 52-week study. Baricitinib as monotherapy or in combination with MTX showed significantly greater cumulative pain relief than MTX alone with more weeks of low/mild pain status over 52 weeks.

Author affiliations

¹Botnar Research Centre, Nuffield Department of Orthopaedics, Rheumatology, and Musculoskeletal Sciences, University of Oxford, Oxford, UK

²Internal Medicine II, Rheumatology, SCHLOSSPARK-KLINIK, University Medicine Berlin, Berlin, Germany

³Rheumatology Department, Hospital General Universitario Gregorio Marañón, Instituto de Investigación Sanitaria Gregorio Marañón, Madrid, Spain

⁴Division of Rheumatology, Department of Internal Medicine, Keio University School of Medicine, Tokyo, Japan

⁵Eli Lilly and Company, Indianapolis, Indiana, USA

⁶Metroplex Clinical Research Center, University of Texas Southwestern Medical Center at Dallas, Dallas, Texas, USA

Acknowledgements The authors thank the participants, caregivers, and investigators. The authors would like to acknowledge Catherine Lynch of Eli Lilly and Company for assistance with manuscript preparation and process support. PCT thanks the National Institute of Health Research for their funding of The NIHR Biomedical Research Centre in Musculoskeletal Disease at Oxford University Hospitals NHS Trust and the University of Oxford.

Contributors Conception of the work: CW, AQ, BJ, NB and JRT. Design of the work: PCT, CW, AQ, BJ, NB and JRT. Acquisition of data for the work and analysis of data for the work: BJ, and RF. Interpretation of data for the work, drafting of the article, critical revision of the article for important intellectual content, approval and sufficient participation in the work to agree to be accountable for all aspects of the work in ensuring that questions related to the accuracy or integrity of any part of the work are appropriately investigated and resolved: all authors. All authors accept responsibility for the work, had access to the data, and controlled the decision to publish.

Funding This study and manuscript were sponsored by Eli Lilly and Company under license from Incyte Corporation.

Competing interests PCT has received research grants and/or consultation fees from Galapagos, Gilead, Eli Lilly and Company, AbbVie, and Pfizer. Rieke Alten has received honoraria and research grants from Abbvie, BMS, Galapagos, Gilead, Janssen, Lilly, MSD, Novartis and Pfizer. JMAG has received consulting fees from Eli Lilly and Company and Pfizer; honoraria from Abbvie, Eli Lilly and Company, Galapagos, Gilead, Pfizer, Roche and UCB; and support for attending meetings from Abbvie, MSD, Pfizer, Roche and UCB. YK has received grants or speaking fees from AbbVie, Astellas, Ayumi, Bristol-Myers Squibb, Chugai, Eisai, Eli Lilly and Company, Jansen, Kissei, Kirin, Novartis Pharma, Pfizer, Sanofi, Takeda, Tanabe-Mitsubishi and UCB. CW, AQ, BJ, NB and JRT are employees and may be shareholders of Eli Lilly and Company. RF has received grants from AbbVie, Eli Lilly and Company, Gilead, and Pfizer; consulting fees from AbbVie, Eli Lilly and Company, Gilead, and Pfizer; and participated on a Data Safety Monitoring Board or Advisory Board for AbbVie, Eli Lilly and Company, Gilead and Pfizer.

Patient consent for publication Not applicable.

Ethics approval The study was conducted in accordance with ethical principles of the Declaration of Helsinki and Good Clinical Practice guidelines and was approved by each centre's institutional review board or ethics committee. All patients provided written informed consent. Participants gave informed consent to participate in the study before taking part.

Provenance and peer review Not commissioned; externally peer reviewed.

Data availability statement Data are available on reasonable request. Lilly provides access to all individual participant data collected during the trial, after anonymisation, with the exception of pharmacokinetic or genetic data. Data are available to request 6 months after the indication studied has been approved in the USA and EU and after primary publication acceptance, whichever is later. No expiration date of data requests is currently set once data are made available. Access is provided after a proposal has been approved by an independent review committee identified for this purpose and after receipt of a signed data sharing agreement. Data and documents, including the study protocol, statistical analysis plan, clinical study report, blank or annotated case report forms, will be provided in a secure data sharing environment. For details on submitting a request, see the instructions provided at www.vivli.org.

Open access This is an open access article distributed in accordance with the Creative Commons Attribution Non Commercial (CC BY-NC 4.0) license, which permits others to distribute, remix, adapt, build upon this work non-commercially, and license their derivative works on different terms, provided the original work is properly cited, appropriate credit is given, any changes made indicated, and the use is non-commercial. See: <http://creativecommons.org/licenses/by-nc/4.0/>.

ORCID iDs

Peter C. Taylor <http://orcid.org/0000-0001-7766-6167>

Rieke Alten <http://orcid.org/0000-0002-3395-4412>

Amanda Quebe <http://orcid.org/0000-0001-6705-8045>

Roy Fleischmann <http://orcid.org/0000-0002-6630-1477>

REFERENCES

- van den Broek M, Dirven L, Kroon HM, *et al*. Early local swelling and tenderness are associated with large-joint damage after 8 years of treatment to target in patients with recent-onset rheumatoid arthritis. *J Rheumatol* 2013;40:624–9.
- Altawil R, Saevarsdottir S, Wedrén S, *et al*. Remaining pain in early rheumatoid arthritis patients treated with methotrexate. *Arthritis Care Res* 2016;68:1061–8.
- Ishida M, Kuroiwa Y, Yoshida E, *et al*. Residual symptoms and disease burden among patients with rheumatoid arthritis in remission or low disease activity: a systematic literature review. *Mod Rheumatol* 2018;28:789–99.
- Druce KL, Jones GT, Macfarlane GJ, *et al*. Determining pathways to improvements in fatigue in rheumatoid arthritis: results from the British Society for rheumatology biologics register for rheumatoid arthritis. *Arthritis & Rheumatology* 2015;67:2303–10.
- Kosinski M, Kujawski SC, Martin R, *et al*. Health-Related quality of life in early rheumatoid arthritis: impact of disease and treatment response. *Am J Manag Care* 2002;8:231–40.
- Brazier JE, Harper R, Jones NM, *et al*. Validating the SF-36 health survey questionnaire: new outcome measure for primary care. *BMJ* 1992;305:160–4.
- Ware JE, Sherbourne CD. The MOS 36-item short-form health survey (SF-36). I. conceptual framework and item selection. *Med Care* 1992;30:473–83.
- Pollard L, Choy EH, Scott DL. The consequences of rheumatoid arthritis: quality of life measures in the individual patient. *Clin Exp Rheumatol* 2005;23:S43–52.
- Häkkinen A, Kautiainen H, Hannonen P, *et al*. Pain and joint mobility explain individual subdimensions of the health assessment questionnaire (HAQ) disability index in patients with rheumatoid arthritis. *Ann Rheum Dis* 2005;64:59–63.
- Sokka T, Kankainen A, Hannonen P. Scores for functional disability in patients with rheumatoid arthritis are correlated at higher levels with pain scores than with radiographic scores. *Arthritis & Rheumatism* 2000;43:386–9.
- Taylor P, Manger B, Alvaro-Gracia J, *et al*. Patient perceptions concerning pain management in the treatment of rheumatoid arthritis. *J Int Med Res* 2010;38:1213–24.
- van der Elst K, Meyfroidt S, De Cock D, *et al*. Unraveling patient-preferred health and treatment outcomes in early rheumatoid arthritis: a longitudinal qualitative study. *Arthritis Care Res* 2016;68:1278–87.
- Meeus M, Vervisch S, De Clerck LS, *et al*. Central sensitization in patients with rheumatoid arthritis: a systematic literature review. *Semin Arthritis Rheum* 2012;41:556–67.
- Walsh DA, McWilliams DF. Mechanisms, impact and management of pain in rheumatoid arthritis. *Nat Rev Rheumatol* 2014;10:581–92.
- Zhang A, Lee YC. Mechanisms for joint pain in rheumatoid arthritis (rA): from cytokines to central sensitization. *Curr Osteoporos Rep* 2018;16:603–10.
- Simon LS, Taylor PC, Choy EH, *et al*. The JAK/STAT pathway: a focus on pain in rheumatoid arthritis. *Semin Arthritis Rheum* 2021;51:278–84.
- Fleischmann R, Schiff M, van der Heijde D, *et al*. Baricitinib, methotrexate, or combination in patients with rheumatoid arthritis and no or limited prior disease-modifying antirheumatic drug treatment. *Arthritis & Rheumatology* 2017;69:506–17.
- Fautrel B, Kirkham B, Pope JE, *et al*. Effect of baricitinib and adalimumab in reducing pain and improving function in patients with rheumatoid arthritis in low disease activity: exploratory analyses from RA-BEAM. *J Clin Med* 2019;8:1394.
- Schiff M, Takeuchi T, Fleischmann R, *et al*. Patient-Reported outcomes of baricitinib in patients with rheumatoid arthritis and no or limited prior disease-modifying antirheumatic drug treatment. *Arthritis Res Ther* 2017;19:208.
- Taylor PC, Lee YC, Fleischmann R, *et al*. Achieving pain control in rheumatoid arthritis with baricitinib or adalimumab plus methotrexate: results from the RA-BEAM trial. *JCM* 2019;8:831.
- Aletaha D, Neogi T, Silman AJ, *et al*. 2010 rheumatoid arthritis classification criteria: an American College of Rheumatology/European League against rheumatism collaborative initiative. *Arthritis Rheum* 2010;62:2569–81.
- Wells GA, Boers M, Shea B, *et al*. Minimal disease activity for rheumatoid arthritis: a preliminary definition. *J Rheumatol* 2005;32:2016–24.

- 23 Tubach F, Ravaud P, Martin-Mola E, *et al.* Minimum clinically important improvement and patient acceptable symptom state in pain and function in rheumatoid arthritis, ankylosing spondylitis, chronic back pain, hand osteoarthritis, and hip and knee osteoarthritis: results from a prospective multina. *Arthritis Care Res* 2012;64:1699–707.
- 24 Fine JP, Gray RJ. A proportional hazards model for the subdistribution of a competing risk. *J Am Stat Assoc* 1999;94:496–509.
- 25 Gooley TA, Leisenring W, Crowley J, *et al.* Estimation of failure probabilities in the presence of competing risks: new representations of old estimators. *Stat Med* 1999;18:695–706.
- 26 Dworkin RH, Turk DC, McDermott MP, *et al.* Interpreting the clinical importance of group differences in chronic pain clinical trials: IMMPACT recommendations. *Pain* 2009;146:238–44.
- 27 Wolfe F, Michaud K. Assessment of pain in rheumatoid arthritis: minimal clinically significant difference, predictors, and the effect of anti-tumor necrosis factor therapy. *J Rheumatol* 2007;34:1674–83.
- 28 Strand V, Kaine J, Alten R, *et al.* Associations between patient global assessment scores and pain, physical function, and fatigue in rheumatoid arthritis: a post hoc analysis of data from phase 3 trials of tofacitinib. *Arthritis Res Ther* 2020;22:243.
- 29 Khan NA, Spencer HJ, Abda E, *et al.* Determinants of discordance in patients' and physicians' rating of rheumatoid arthritis disease activity. *Arthritis Care Res* 2012;64:206–14.
- 30 Studenic P, Radner H, Smolen JS, *et al.* Discrepancies between patients and physicians in their perceptions of rheumatoid arthritis disease activity. *Arthritis & Rheumatism* 2012;64:2814–23.
- 31 Verschueren P, De Cock D, Corluy L, *et al.* Methotrexate in combination with other DMARDs is not superior to methotrexate alone for remission induction with moderate-to-high-dose glucocorticoid bridging in early rheumatoid arthritis after 16 weeks of treatment: the CareRA trial. *Ann Rheum Dis* 2015;74:27–34.
- 32 Pazmino S, Lovik A, Boonen A, *et al.* Does including pain, fatigue, and physical function when assessing patients with early rheumatoid arthritis provide a comprehensive picture of disease burden? *J Rheumatol* 2021;48:174–8.