



OPEN

## The effect of calcium electroporation on viability, phenotype and function of melanoma conditioned macrophages

Liam Friel Tremble<sup>1</sup>, Cynthia C. B. B. Heffron<sup>2</sup> & Patrick F. Forde<sup>1</sup>✉

Electroporation in combination with chemotherapy is an established treatment used on solid malignancies that results in enhanced chemotherapeutic uptake. Recent advances have begun to transition to the use of non-toxic compounds, such as calcium, in lieu of chemotherapy, which can also induce tumour cell death. While the effect of treatment on tumour cell death has been well characterized and has been shown to induce an immunogenic form of cell death, the effect of treatment on intratumoural immune cells has not been investigated. Here we present data showing the effect of calcium electroporation on immune cells, using melanoma-conditioned bone marrow-derived macrophages. Similar to tumour cells, macrophage cell membranes are susceptible to poration following treatment and subsequently reseal. Macrophages are less susceptible to calcium electroporation induced cell death in comparison to B16F10 melanoma cells. However treatment with electroporation with or without bleomycin or calcium was shown to affect macrophage phenotype and function. Coculture of calcium electroporated macrophages revealed that both the capacity of macrophages to stimulate and direct T cell responses are affected following exposure to treatment. We conclude that calcium electroporation has the potential to boost the immunogenic capacity of exposed tumour associated macrophages, and further research is warranted to determine if calcium electroporation can be optimised to generate systemic anti-cancer immune responses.

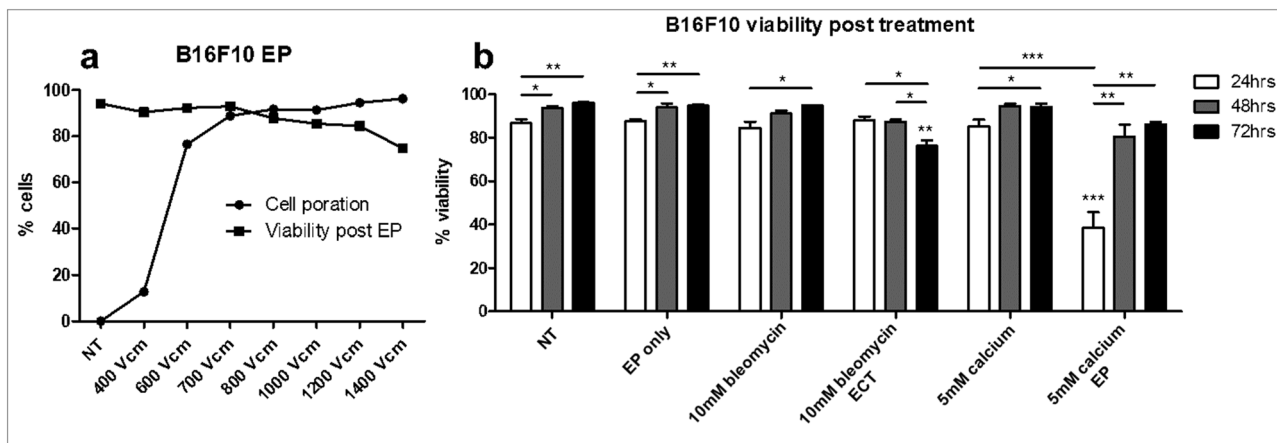
Reversible electroporation (EP) is a local treatment modality which can be used to form transient pores in the cell membrane<sup>1,2</sup>. Electrodes are placed in direct proximity to the tissue of interest and a series of pulses are delivered which result in the formation of pores which can persist for several seconds to several minutes before resealing and leaving cells intact and viable<sup>3</sup>.

Reversible EP has been used in a cancer context to increase the uptake of chemotherapeutics, especially hydrophobic drugs, such as bleomycin, which can have poor rates of passive cell penetration<sup>4-6</sup>. However, EP has also been used in combination with non-toxic drugs such as calcium, which when delivered in sufficient concentrations can induce rapid cell death<sup>7</sup>. Due to variations in cell turnover rates, EP can be safely used in proximity to many healthy tissues and vasculature, making it an attractive alternative in a range of tumour types. Previous studies have shown that while microvasculature can be damaged, vasculature with a diameter of 5 mm or more are preserved during treatment, while the collagen matrix scaffolding of the liver has also been unaffected by treatment<sup>8-10</sup>.

EP with chemotherapy, termed electrochemotherapy (ECT), is routinely used for the treatment of dermal lesions and endoscopic devices have been designed for the treatment of oesophageal and colorectal cancers<sup>11-15</sup>. Other devices are currently in development to facilitate EP of other organ sites<sup>16</sup>. Complete response rates in excess of 80% have regularly been reported for treatment of dermal lesions with ECT<sup>17</sup>.

ECT with bleomycin has been shown to induce an immunogenic form of cell death characterized by enhanced ecto-calreticulin and ATP and HMGB1 release by treated cells<sup>18</sup>. An influx of immune cells is also seen following treatment, including macrophages, indicating that ECT may be utilized to induce an anti-cancer immune

<sup>1</sup>CancerResearch@UCC, University College Cork, Fourth floor, Western Gateway Building, Western Road, Cork, Ireland. <sup>2</sup>Department of Pathology, Cork University Hospital, Wilton, Cork, Ireland. ✉email: p.forde@ucc.ie



**Figure 1.** Optimisation of electroporation parameters in B16F10 cells. B16F10 cells were electroporated at a range of concentrations and cell poration was measured by PI uptake during EP (a). Cell viability was determined by PI permeability 30 min following treatment. Cells were electroporated at 700 V/cm with or without drug and were analysed for viability 24, 48 and 72 h post treatment (b). Data shown is representative of an  $n = 3$  per group. \* $p < 0.05$ , \*\* $p < 0.01$ , \*\*\* $p < 0.001$  compared to NT unless specified.

response<sup>19</sup>. However, while ECT has been shown to repress distal tumour growth in murine models, this is not seen in clinically advanced cancer patients<sup>19,20</sup>.

The substitution of chemotherapy with calcium was rationally designed in part due to the hypothesized immunogenic effects of calcium uptake, and to abrogate the immunosuppressive effects of chemotherapy. Promisingly, a case study in malignant melanoma treated with calcium EP has reported remission of both local treated and distal untreated tumours, indicating a systemic anti-cancer immune response or other abscopal effect<sup>7</sup>.

Due to the immunogenic potential of EP treatments, the effect of treatment in combination with other immunogenic modalities, including T cell check point inhibitors, is under investigation<sup>21,22</sup>. However the direct effect of EP on intratumoural immune cells is not known. We aimed to determine if tumour-associated macrophages (TAMs) are sensitive to ECT or calcium EP and to determine the immunogenic capacity of TAMs following exposure to calcium EP.

Here, using a bone marrow-derived monocyte (BMDM) model of melanoma TAMs, we show for the first time that EP can induce reversible pore formation on BMDMs using pulses optimised for reversible EP of tumour cells derived from the European Standard Operating Procedures of ECT (ESOPE) study<sup>4</sup>. Using these pulses we have shown that treatment can impact BMDM size, viability, phenotype, function and role in T cell activation.

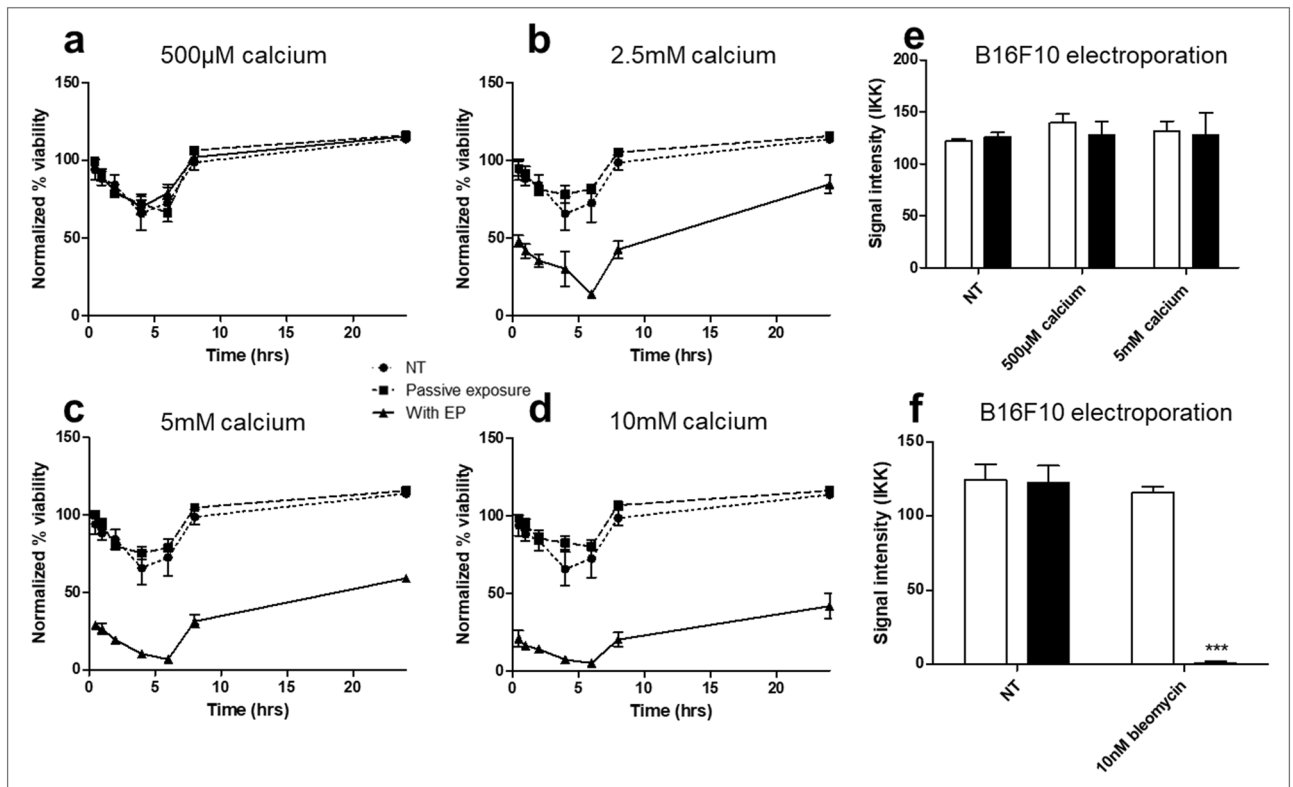
## Results

**Optimization of B16F10 EP parameters.** As electrical parameters of tumour EP are optimized to induce reversible pore formation on tumour cells, we first optimized the in vitro delivery of EP on B16F10 tumour cells<sup>23–25</sup>. Cell poration was measured in parallel with the subsequent viability of cells 30 min following EP (Fig. 1a). At 800 V/cm the sum of non-viable cells and porated cells surpassed 100%, indicating that a proportion of electroporated cells did not regain membrane integrity. As such 700 V/cm was selected as an appropriate voltage to induce reversible EP in B16F10 cells.

Using this voltage preliminary data was generated to ensure cell viability at 24, 48, and 72 h post treatment (Fig. 1b). Using previously optimised concentrations of bleomycin (10 nM) and calcium (0.5–5 mM) we examined the nature of cell death following treatment. No loss in viability was observed following EP. A daily increase in viability was observed in untreated cells, however this was considered likely to be an artefact of experimental technique, in which B16F10 cells do not respond optimally to repeated trypsinisations within short periods and the nature of the EP buffer used.

Significantly decreased viability was seen in cells treated with bleomycin ECT 3 days post treatment compared to EP only ( $p < 0.01$ ) and in contrast a significant decrease was seen in 24 h post treatment in cells treated with calcium EP ( $p < 0.001$ ), which was no longer apparent at 48 or 72 h. As expected these results indicated a differential timing of cell death following EP with calcium and bleomycin.

**Cell death following treatment of B16F10s.** To further determine the nature of cell death following treatment, we performed serial matched viability analysis on B16F10 cells following calcium EP at a range of calcium concentrations (Fig. 2a–d). No cell death was observed in cells treated with 500  $\mu$ M calcium, indicating doses of 2.5 mM or greater are required to generate therapeutic cell death in a B16F10 model of melanoma. A significant drop in viability was seen in cells treated with 2.5 mM calcium or higher in combination with EP, which had occurred by 30 min post treatment. Cell death increased until 6 h after treatment, but recovery was seen in all conditions by 8 h. The doubling time of B16F10s is approximately 15 h, so improved viability is likely a result of replication by intact cells rather than the recovery of cells which had lost membrane integrity. For



**Figure 2.** Cell death following electroporation with bleomycin or calcium. B16F10 cells were electroporated at 700 V/cm with or without drug. Serial matched measurements of cell viability were taken following calcium EP (a–d). Viability was normalized to untreated cells at  $t=0$ . Viable cells were isolated 24 h post treatment by selection of adherent cells and seeded at a low concentration for clonogenic analysis (e,f). Data shown is representative of an  $n=3$  per group (a–d,f) and an  $n=9$  per group (e). \*\*\* $p<0.001$  compared to EP only.

further studies we chose to use 500  $\mu\text{M}$  as a low ineffective dose and 5 mM as the upper dose as maximal death percentages between 5 and 10 mM were non-significant.

To determine if cells not acutely killed following calcium EP had any loss in malignant potential, we performed clonogenic assays on cells which were viable 24 h following treatment (Fig. 2e). No change was seen in clonogenic ability, indicating that cells not killed acutely have normal replicative potential.

Conversely, we performed clonogenics with viable cells selected 24 h following EP with bleomycin (Fig. 2f). No colonies were established in comparison to all controls ( $p<0.001$ ), in concordance with previous literature indicating that ECT results in cell death by loss of replicative potential.

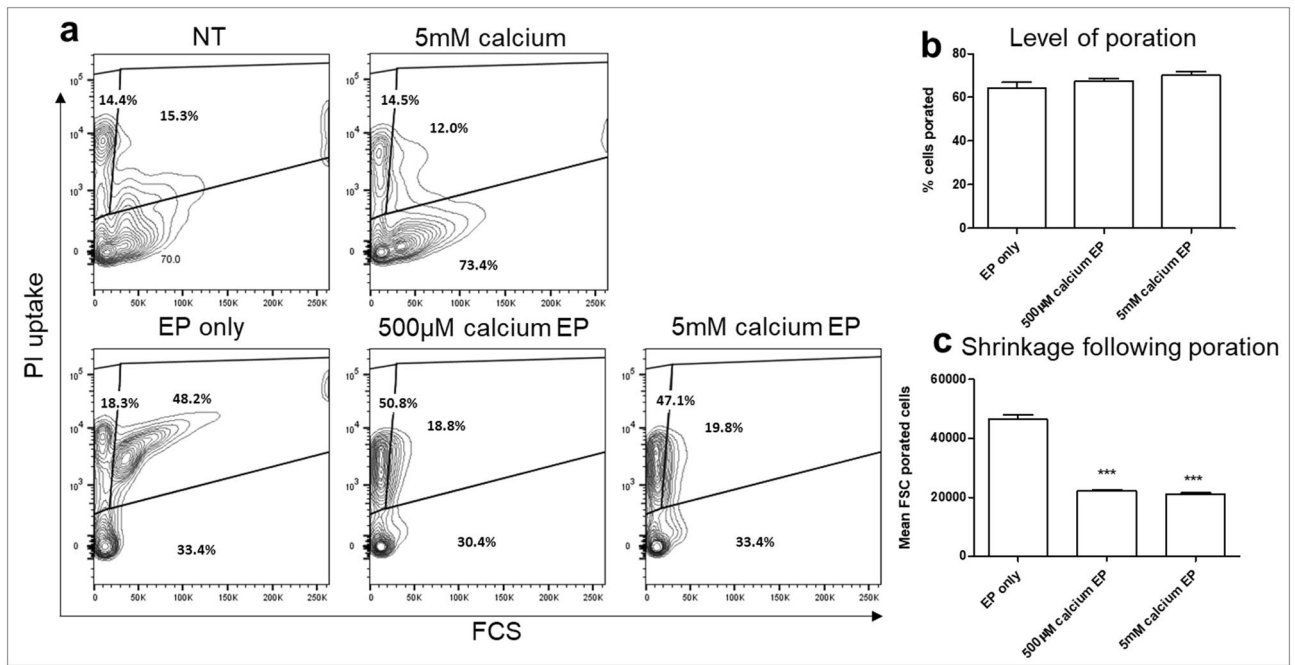
**Melanoma conditioned BMDM membrane poration and size following EP.** To determine the effect of tumour EP on intratumoural macrophages, melanoma conditioned BMDMs were electroporated with the parameters determined in Fig. 1.

Calcium is a positively charged molecule ( $\text{Ca}^{2+}$ ), which contributes to the membrane potential of the plasma membrane by virtue of the different concentrations of free calcium inside and outside of the cell. Intracellular calcium concentrations are tightly regulated to facilitate its role as a secondary signalling messenger, thus increased extracellular concentrations result in higher voltage gradients being formed across the plasma membrane. It has previously been shown that calcium can affect membrane resealing and enhance the rate of tumour cell death following EP, both in vitro and in vivo<sup>26,27</sup>. Thus, The efficiency of EP in the presence of calcium was also investigated as extracellular calcium is known to affect membrane resealing and other membrane dynamics through its role in voltage generation (Fig. 3a)<sup>28</sup>.

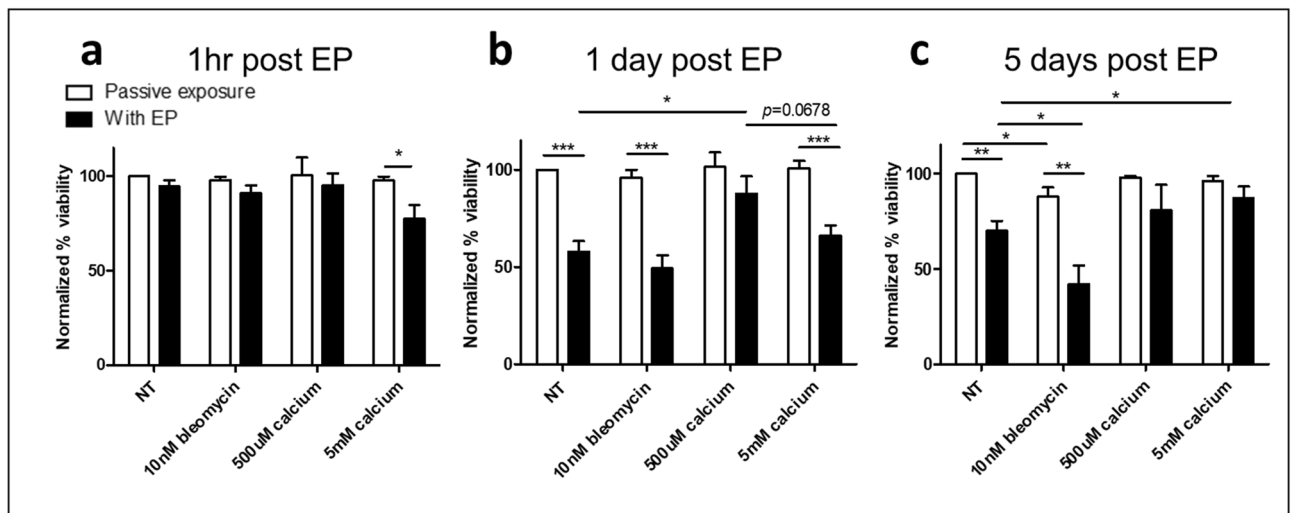
EP induced cell poration in  $64 \pm 5\%$  of BMDMs, which was unchanged by the addition of calcium (Fig. 3b).

Although calcium did not affect the level of porated cells, there was a shift in cell size following EP, with calcium EP resulting in phenotypically smaller cells as determined by forward scatter ( $p<0.001$ ) (Fig. 3a,c). This effect was induced by both 5 mM calcium and the lower dose 500  $\mu\text{M}$  which was non-lethal in B16F10 cells. The reduction in FSC may indicate that larger BMDMs are more susceptible to EP.

**Melanoma conditioned BMDM viability following EP.** Following determination that BMDMs are porated, we next analysed the viability of cells following treatment with EP with or without calcium or bleomycin (Fig. 4). As BMDMs have limited replicative potential the effect of therapy was followed for up to 5 days. At 1 h post treatment, all cells except those treated with EP with 5 mM calcium ( $p<0.05$ ) were as viable as untreated



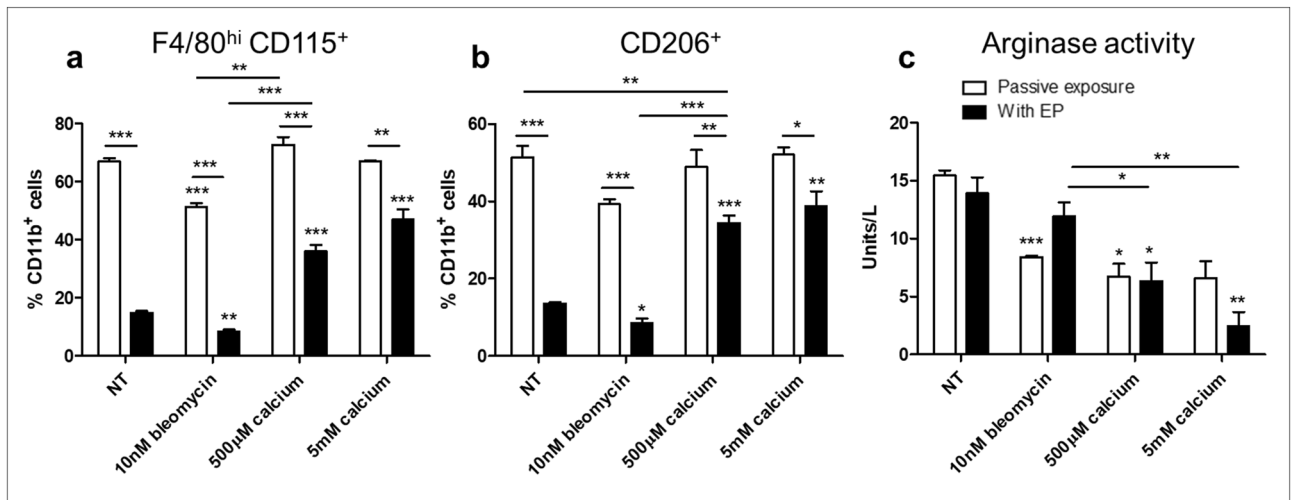
**Figure 3.** Electroporation of melanoma conditioned BMDMs. Melanoma conditioned BMDMs were electroporated at the same parameters as used for B16F10 cells. Poration was measured by PI uptake during EP (a,b). Cell size was determined by flow cytometric forward scatter readings (c). Data shown is representative of an n = 3 per group. \*\*\**p* < 0.001 compared to EP only.



**Figure 4.** Viability of melanoma conditioned BMDMs following electroporation with bleomycin or calcium. Melanoma conditioned BMDMs were electroporated in the presence of bleomycin or calcium. Viability was determined by PI uptake at 1 h (a), 1 day (b) and 5 days (c) post treatment. Data shown is representative of an n = 7 per group and normalized to untreated controls. \**p* < 0.05, \*\**p* < 0.01, \*\*\**p* < 0.001 compared to NT or EP only as appropriate unless specified.

controls (Fig. 4a). These results indicate that following poration, in which over 60% of cells are porated, cells regain membrane integrity.

At 24 h post treatment, cells treated with EP with or without bleomycin displayed a marked reduction in viability, indicating an EP related toxicity in BMDMs (Fig. 4b). This is likely due to changes in the composition of their cytoplasmic contents which can be distorted by loss of cytoplasm and gain of extracellular medium during poration. 500 µM calcium was protective to electroporated cells, resulting in significantly reduced death compared to EP alone (*p* < 0.05). There was no significant difference between 500 µM calcium EP and untreated



**Figure 5.** Phenotypic evaluation of melanoma conditioned BMDMs following electroporation with bleomycin or calcium. Melanoma conditioned BMDMs were electroporated in the presence of bleomycin or calcium and cultured for 72 h. Cells were analysed by flow cytometry (a,b) for the macrophage activation markers F4/80, CD115 and CD206. BMDMs were identified as CD11b<sup>+</sup> and gated according to F4/80, CD115 and CD206 expression. Intracellular arginase activity was assayed following cell lysis (c). Data shown is representative of an  $n = 3$  per group. \* $p < 0.05$ , \*\* $p < 0.01$ , \*\*\* $p < 0.001$  compared to NT or EP only as appropriate unless specified.

cells although there was a slight trend of decreased viability. This protective role was lost in the presence of 5 mM calcium ( $p = 0.0678$ ). Thus low levels of calcium are most protective for conditioned BMDMs following treatment.

At 5 days post treatment the decrease in viability of electroporated cells was less pronounced but still present ( $p < 0.01$ , Fig. 4c). The addition of bleomycin decreased the viability of untreated and electroporated cells, however bleomycin induced a larger level of cell death in combination with EP compared to passive exposure ( $30 \pm 13\%$  vs  $46 \pm 16\%$ ,  $p = 0.0642$ ). Both doses of calcium proved protective at 5 days post treatment, with no significant change from untreated or passive calcium exposure and increased viability compared to EP alone ( $p < 0.05$ ).

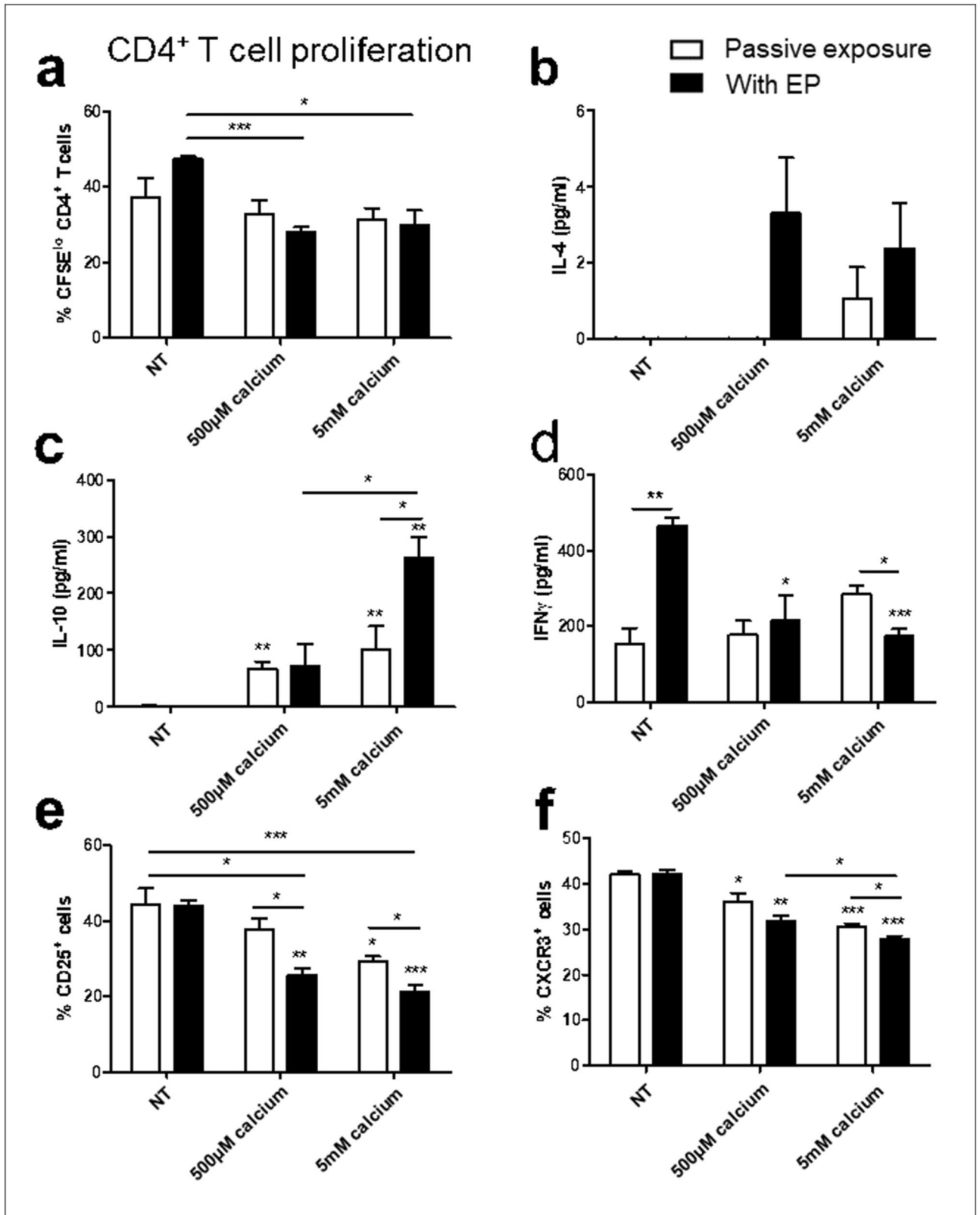
**Melanoma conditioned BMDM phenotypic shift following EP.** Following confirmation that a proportion of BMDMs can survive EP, we next sought to phenotype cells to determine any shifts in behaviour. Cells were isolated 72 h after treatment and the canonical M1:M2 enzymes, iNOS and arginase, were assayed in combination with cell surface markers. Viable CD11b<sup>+</sup> BMDMs can be separated in a binary fashion into F4/80<sup>+</sup> CD115<sup>lo</sup> or F4/80<sup>hi</sup> CD115<sup>+</sup> cells. An upregulation of F4/80 accompanied with CD115 upregulation is indicative in murine myeloid cells of a transition from monocyte to macrophage<sup>29</sup>. The linear evolution of these cells is poorly understood, however this shift is also associated with an upregulation of M2-like behaviour<sup>30</sup>. EP resulted in a significant decrease in this maturation process (Fig. 5a), which was maintained in cells treated with bleomycin EP. However the addition of calcium, in a dose dependent manner, reduced this decrease ( $p < 0.001$ ). The M2-like phenotype of these matured cells was reflected by the CD206 expression of CD11b<sup>+</sup> cells (Fig. 5b).

All cells assayed were negative for detectable nitrates in supernatant using a Griess assay (data not shown). While EP induced a decrease in F4/80<sup>hi</sup> CD115<sup>+</sup> cells, there was no change in arginase activity in these cells (Fig. 5c). Despite a relative increase in F4/80<sup>hi</sup> CD115<sup>+</sup> in cells treated with calcium EP, these cells displayed marked reduction in arginase activity, that was independent of EP, indicating that passive exposure to calcium can induce metabolic effects in BMDMs.

**Effect of BMDM calcium EP on cocultured CD4<sup>+</sup> T cells.** Due to enhanced survival of cells treated with calcium EP, and increased maturation coupled with decreased arginase activity this treatment was selected as the most promising for further immunological studies. The effect of treated BMDMs on CD4<sup>+</sup> T cells was determined by coculture experiments using BMDMs isolated 24 h after treatment in combination with freshly isolated splenic CD4<sup>+</sup> T cells.

Calcium EP of BMDMs was found to decrease their ability to stimulate CD4<sup>+</sup> T cell proliferation (Fig. 6a). Cells treated with or without EP resulted in no detectable IL-10 in supernatant (Fig. 6c), however calcium treatment induced IL-10 secretion. This effect was further increased by 5 mM calcium in combination with EP ( $p < 0.05$ ). IFN $\gamma$  secretion patterns inversely reflected IL-10 expression (Fig. 6d). EP alone induced high levels, and the addition of calcium reduced IFN $\gamma$  secretion. These results suggest that while EP alone may promote relative Th1 responses, calcium EP shifts this towards a regulatory T cell (Treg) response. This is also reflected by the Th2 cytokine IL-4, which often accompanies Treg responses, and which was detectable in trace amounts following treatment with calcium EP (Fig. 6b).

A decrease in IFN $\gamma$  was reflected by decreased CXCR3 expression on activated T cells (Fig. 6f) following calcium EP. There was a decrease also in the Treg marker, CD25, following calcium EP ( $p < 0.01$ ), however CD25 expression is also coupled to T cell activation and could reflect decreased activation as is mirrored in the reduced T cell proliferation seen in Fig. 6a.



**Figure 6.** Effect of melanoma conditioned BMDMs following electroporation on CD4<sup>+</sup> T cells. Melanoma conditioned BMDMs were electroporated in the presence of bleomycin or calcium and cultured for 24 h. Cells were then cocultured with freshly isolated CFSE labelled CD4<sup>+</sup> T cells. T cell proliferation was measured by reduced CFSE expression (a). Levels of IL-4 (b), IL-10 (c) and IFN $\gamma$  (d) in the supernatant were measured by ELISA. Activated T cells were gated by low CFSE expression and CD25 (e) and CXCR3 (f) expression was determined by flow cytometry. Data shown is representative of an n=3 per group. \**p*<0.05, \*\**p*<0.01, \*\*\**p*<0.001 compared to NT or EP only as appropriate unless specified.



**Effect of BMDM calcium EP on cocultured CD8<sup>+</sup> T cells.** To fully elucidate the role of electroporated BMDMs in anti-cancer immunity we subsequently examined the effect of treated BMDMs on cytotoxic CD8<sup>+</sup> T cell responses. In contrast to CD4<sup>+</sup> T cell activation, calcium EP was shown to increase the CD8<sup>+</sup> T cell activation potential of melanoma conditioned BMDMs (Fig. 7a). EP had no effect on CD8<sup>+</sup> T cell proliferation, however calcium increased activation in an apparently dose dependent manner ( $p=0.0892$ ). Intracellular granzyme B was detectable in both BMDMs and CD8<sup>+</sup> T cells (Fig. 7b,c). BMDM calcium treatment resulted in an increase in granzyme B in both BMDMs and cocultured CD8<sup>+</sup> T cells. EP decreased BMDM granzyme B levels ( $p<0.05$ ), which was also evident in decreased BMDM granzyme B levels in 500  $\mu$ M calcium EP (ns) and 5 mM calcium EP ( $p=0.05$ ). BMDM EP had no effect on CD8<sup>+</sup> T cell granzyme B levels across any of the tested conditions. Secretion of IL-10 and IFN $\gamma$  were also measured as CD8<sup>+</sup> T cells are significant sources of both IL-10 and IFN $\gamma$  in vivo (Fig. 7d,e). Similarly to CD4<sup>+</sup> T cell coculture, calcium induced a dose dependent increase in IL-10 levels, independently of EP, however calcium levels were of a 4 to sixfold lower concentration than from CD4<sup>+</sup> T cell cocultures. No changes were observed in IFN $\gamma$  secretion levels except by cocultures with BMDMs treated with 5 mM EP in which increased secretion was observed ( $p<0.05$ ).

## Discussion

ECT is a well-established treatment modality with high complete response rates. The EP pulses are optimized to result in reversible cell poration with minimal ablative effects. The cytotoxic effects of ECT are manifested by intracellular bleomycin during cell proliferation following treatment, as supported by the cell death shown above. Despite promising indications, calcium EP is not well established and is currently restricted to use on an investigative basis.

A significant proportion of the existing literature on electrochemotherapy and reversible electroporation in a cancer context use pulses with a voltage of 1200 V/cm. This is rationally designed to maintain consistency with clinically used pulsing parameters, which under ESOP guidelines are 1000–1300 V/cm depending on the type of electrodes used. However, this voltage is ablative to both B16F10 cells and BMDMs, and thus a lower voltage is required to study the effect of reversible electroporation on these cells. In the pursuit of diligence, in the future it would be desirable to also consider the outcome of the experiments presented here using a pulse strength of 1200 V/cm, and to emphasize this discrepancy with existing literature in the context of the results presented. In vitro cell lines differ remarkably in their ability to recover following the delivery of high voltage pulses, with anecdotal evidence suggesting smaller cells such as Lewis Lung Carcinoma cells require higher voltages to obtain effective reversible poration in comparison to larger cells such as B16F10 cells, it is still unclear if or how this translates to clinical efficacy<sup>19</sup>.

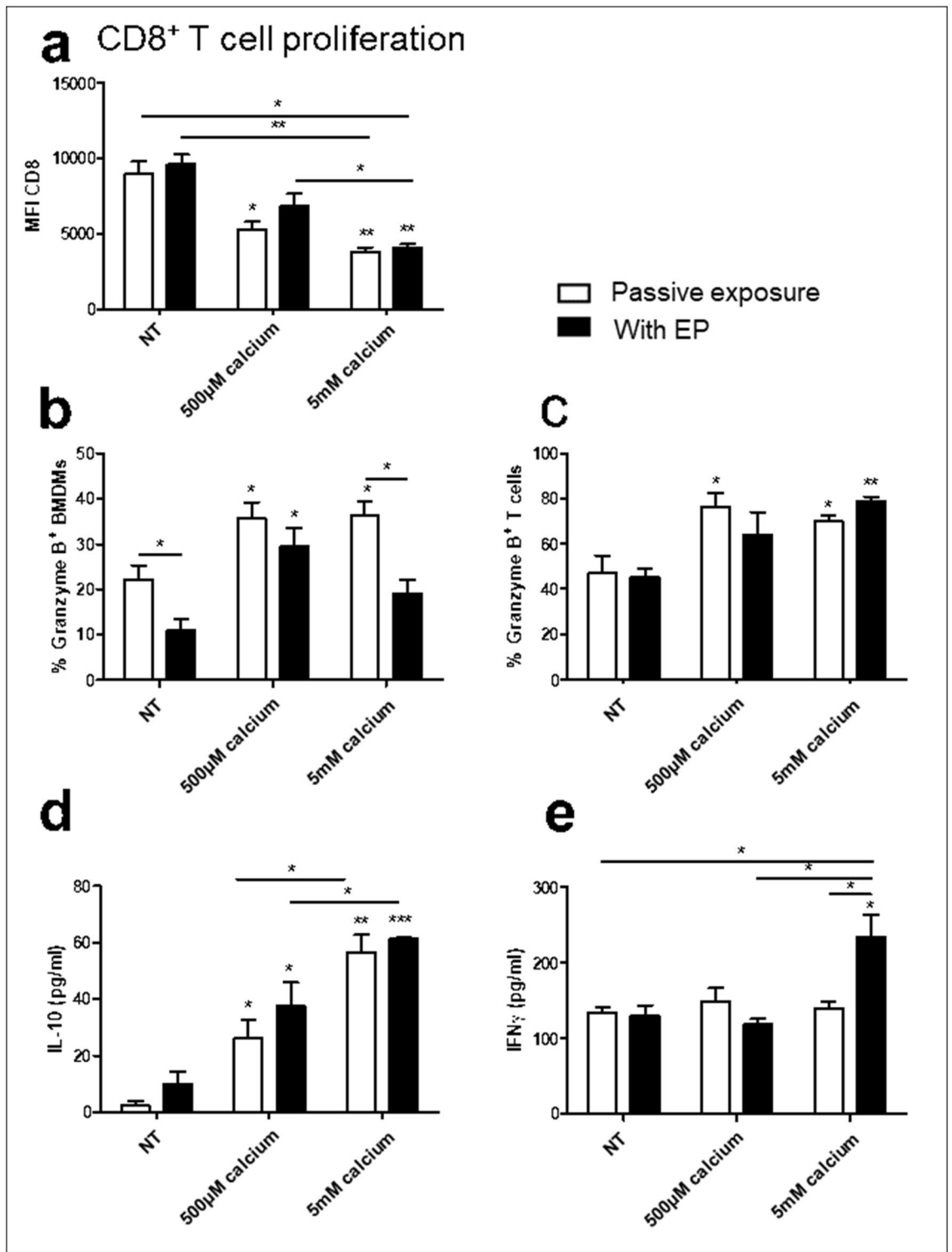
The fundamental mechanism of cell death following calcium EP is different to ECT as no chemotherapeutic is present. In vitro and murine preclinical observations have been supported by findings following veterinary use on equine sarcoids of the skin in which 14 of 16 treated tumours showed evidence of significant necrotic tumour cell death 1–3 weeks following treatment<sup>31</sup>. Furthermore, preliminary results of a single patient treated in a clinical colorectal cancer study have shown that treatment seems to be safe and treatment reduced obstruction of the colon<sup>13</sup>.

It has previously been shown that calcium EP results in necrotic cell death as a result of severe ATP depletion<sup>27,32</sup>. In agreement with this, here we have shown that the cell death following treatment is acute, in which cells do not regain membrane integrity or lose viability within 6 h of treatment. Cells which survive this initial insult show no apparent loss of proliferative potential.

Having successfully generated these treatment models in a melanoma cell line, we subsequently examined the effect of these on syngenic bone-marrow derived monocytes treated with B16F10 conditioned medium to mimic melanoma conditioning. These cells are susceptible to EP and regained membrane integrity following treatment. However, EP resulted in a subsequent reduction in viability after 24 h which was still evident 5 days after treatment. In tandem with this effect was a selective depletion of CD115<sup>+</sup> F4/80<sup>hi</sup> and CD206<sup>+</sup> cells. CD115<sup>+</sup> F4/80<sup>hi</sup> and CD206<sup>+</sup> are macrophage-like cells and also M2-like, in contrast to CD115<sup>lo</sup> F4/80<sup>mid</sup> cells which are monocyte-like and M1-like<sup>29,33,34</sup>. It is commonly considered that M2-like cells can support tumour growth and inhibit anti-cancer T cell responses while M1-like cells can exert inflammatory responses that can support anti-cancer immune responses<sup>35</sup>. While CD115<sup>+</sup> F4/80<sup>hi</sup> cells were depleted by EP, cell populations retained their arginase activity, indicating the retention an M2-like phenotype<sup>36</sup>. EP alone of BMDMs showed no subsequent effect on T cell proliferation or polarization as determined by surface markers but did result in increased IFN $\gamma$  secretion in CD4<sup>+</sup> T cell cocultures.

ECT did not induce any further cell death in comparison to EP alone in the first 24 h. By day 5 there is a further reduction in viability caused by ECT beyond the loss of viability seen with EP alone ( $p<0.01$ ). In a tumour context, there is a continual supply of TAMs from circulating monocytes and while it has been shown that some murine models contain populations of self-maintaining macrophage populations, it is likely that a continuous supply from the circulation is the predominant source of TAMs<sup>37–39</sup>. Therefore, while it is likely to effect coculture behaviour, it cannot be speculated whether viability declines seen after the first 24 h will have a meaningful effect on in vivo macrophage tumour biology. ECT followed the same trend of CD115<sup>+</sup> F4/80<sup>hi</sup> and CD206<sup>+</sup> depletion as EP but did not significantly decrease arginase activity indicating that ECT may impair M2-like responses.

Calcium EP of melanoma conditioned BMDMs displayed a remarkably different response to EP alone. Immediately following treatment cell size was significantly reduced. Following treatment an initial loss in viability was seen in cells treated with 5 mM calcium EP, however the scale of cell death in comparison to B16F10 cells was markedly reduced. At 1 h following treatment with 5 mM calcium there was a reduction of viability of  $73 \pm 3\%$  of cells in B16F10s compared to only  $23 \pm 7\%$  in melanoma conditioned BMDMs ( $p<0.01$  difference in means).



**Figure 7.** Effect of melanoma conditioned BMDMs following electroporation on CD8<sup>+</sup> T cells. Melanoma conditioned BMDMs were electroporated in the presence of bleomycin or calcium and cultured for 24 h. Cells were then cocultured with freshly isolated CFSE labelled CD8<sup>+</sup> T cells. T cell proliferation was measured by reduced CFSE expression (a). Intracellular levels of granzyme B were determined by flow cytometry in treated BMDMs (b) and cocultured activated CD8<sup>+</sup> T cells (c). Levels of IL-10 (d) and IFN $\gamma$  (e) in the supernatant were measured by ELISA. Data shown is representative of an n = 3 per group. \**p* < 0.05, \*\**p* < 0.01, \*\*\**p* < 0.001 compared to NT or EP only as appropriate unless specified.



By 24 h calcium had played a protective role in improving viability following EP, and by day 5 no significant difference was observable between untreated cells and cells treated with calcium EP. It is unclear, how calcium can play a protective role which occurs following membrane resealing. Previously it has been shown that low calcium concentrations can aid pore resealing following EP<sup>28</sup>. However under the given conditions in which EP of BMDMs in calcium free conditions resulted in complete membrane resealing, this effect was not detectable. The protective role displayed here at 24 h is indicative of a protective role in cells which have already resealed<sup>40,41</sup>.

Calcium treatment, with or without EP reduced arginase activity. Calcium has been shown to influence purinergic receptor signalling in macrophages<sup>42</sup>. Over active ATPase activity generated by cells attempting to regain homeostatic intracellular calcium concentrations have been hypothesized as a potential cause of the severe depletion of ATP following calcium EP<sup>43,44</sup>. It is possible that calcium free buffers result in cytoplasmic calcium depletion which is energetically taxing on cells<sup>45</sup>. Further research is required to determine if low levels of calcium in EP buffers can reduce energetic stress on cells following treatment<sup>46</sup>.

Calcium EP diminishes the reduction of F4/80<sup>hi</sup> CD115<sup>+</sup> cells seen following EP despite the initial phenotypic shift towards cell shrinking, but instead of increasing arginase expression associated with these cells is responsible for a down regulation of arginase activity. This effect, with lower (500  $\mu$ M) doses is independent of EP, indicating that passive calcium treatment can impart lasting effects on BMDMs. Mirroring this effect, calcium treatment of BMDMs in the absence of EP affected subsequent CD8<sup>+</sup> T cell proliferation and both CD4<sup>+</sup> and CD8<sup>+</sup> T cocultures.

Cells were washed following treatment 3 times, negating the possibility of prolonged exposure to EP buffer or calcium treatments. However, calcium is known to interact with and affect the plasma membrane.

That calcium EP can upregulate IL-10 secretion from both CD4<sup>+</sup> and CD8<sup>+</sup> T cell cocultures in a dose dependent manner indicates that high dose calcium administration may inhibit anti-cancer immune responses as directed by exposed BMDMs<sup>47</sup>. However they exert complex effects, also increasing CD8<sup>+</sup> T cell proliferation and granzyme B levels in activated T cells indicating the expansion of a cytotoxic immune response in a dose dependent manner<sup>48,49</sup>. Most strikingly, high dose (5 mM) calcium electroporated BMDMs were the only cells which displayed an increase in IFN $\gamma$  from CD8<sup>+</sup> T cell cocultures. IFN $\gamma$  is a potent activator of Th1 anti-cancer immune responses<sup>50</sup>.

When administered in combination with EP, calcium dosage can affect the level of tumour cell death. From this data, it is clear that under the EP parameters used here, melanoma conditioned BMDMs are susceptible to poration by EP but relatively resistant to calcium EP induced cell death. However exposed cells are phenotypically and functionally altered. To our knowledge, this is one of the first studies examining the effect of reversible EP, as designed for the treatment of solid tumours, on immune cells, other than dendritic cells, which are also exposed to treatment. We conclude that BMDMs exposed to calcium EP maintain viability and promote cytotoxic T cell responses which may boost anti-cancer immune responses. Further investigation of other immune cell types, is required to determine if immune responses are compromised, and if therapeutic administration can be optimized to balance immunogenic tumour cell death with the retention and optimisation of the immune response by exposed immune cells.

## Materials and methods

**Cell line maintenance.** The B16F10 cell line was purchased from and authenticated by the Developmental Therapeutics Program, Division of Cancer Treatment and Diagnosis Tumor Repository and regularly tested for the presence of mycoplasma. The B16F10 cell line was maintained in RPMI-1640 supplemented with 10% foetal calf serum (FCS) and 50 units/ml penicillin and 50  $\mu$ g/ml streptomycin. Cells were cultured at 37 °C in a humidified chamber with 5% CO<sub>2</sub>. B16F10 cells were centrifuged at 200 $\times$ g for 5 min during wash steps. For all washes, cells were centrifuged, then resuspended in respective buffers, centrifuged again, and resuspended as required.

**Ethical approval and ethical standards.** All animal husbandry and handling was performed according to the Directive 2010/63/EU. Mice were culled specifically for use in this study under a euthanasia only licence, granted by the Animal Welfare Board of University College Cork, and was performed according to the Directive 2010/63/EU.

**Development and culturing of BMDMs.** Animals were purchased from Envigo in the U.K. 4–6 week old female C57BL6J were euthanized by cervical dislocation. BMDMs were prepared as previously described<sup>51</sup>. Briefly, tibias and femurs were isolated and sterilized. The bone marrow was isolated and passed through a 70  $\mu$ M filter. Red blood cells were lysed and remaining cells were cultured in high glucose DMEM with 1 $\times$  Eagle's minimum essential medium non-essential amino acids,  $\beta$ -mercaptoethanol (10  $\mu$ M), sodium pyruvate (1 mM), FCS (10% v/v) and M-CSF (50 ng/ml, Biolegend) for 5 days. Cells were cultured for 5 days before adding 20 $\times$  ultracentrifuged B16F10 conditioned medium to a final concentration of 1 $\times$  for a further 24 h. Conditioned medium was prepared as previously described<sup>51</sup>, in brief 2.5  $\times$  10<sup>6</sup> B16F10 cells were incubated in a T175 flask in 20 ml RPMI supplemented with FCS (2% v/v) and P/S (1% v/v) for 48 h. Supernatant was isolated and ultracentrifuged in Vivaspin 20 tubes with a 3 kDa molecular weight cut off filter (GE Healthcare). Cells were isolated by gentle pipetting of EDTA (5 mM) in PBS following 5–15 min on ice. Bone marrow and BMDMs were centrifuged at 270  $\times$  g during wash steps.

**Reversible electroporation.** 1  $\times$  10<sup>6</sup> cells were washed and resuspended in HEPES EP buffer<sup>52</sup> (10 mM HEPES, 250 mM sucrose, 1 mM MgCl<sub>2</sub> in dH<sub>2</sub>O) with or without calcium (CaCl<sub>2</sub> stock solution, Merck) at a final concentration of 500  $\mu$ M, 2.5 mM, 5 mM or 10 mM or bleomycin (Bleomycin Teva, molarity was determined based on activity per mg and observation 1500 international units corresponds to 1 mg<sup>53</sup>) at final concentration

of 10 nM in cuvettes with a 4 mm gap between two plate electrodes in a total volume of 800  $\mu$ l. Reversible EP pulses were delivered by a square wave electroporator (BTX ECM 2001) with the following EP parameters: 8 pulses of 99  $\mu$ s, 1 Hz, and 0.7 kV/cm (applied voltage to electrode distance ratio). Cells were rested for 20 min at 37 °C before further use.

**Clonogenic assay.** Following treatment cells were washed twice and seeded in complete media. Seeding densities were empirically determined for each treatment regimen to ensure cells were 60–90% confluent after 24 h. After 24 h, to select for cells viable following treatment all non-adherent cells were discarded and adherent cells were isolated. Cells were then washed and seeded in 6 well plates in complete media in triplicate. The wells were checked every 2 days to ensure no acidification of the media had occurred. In instances where acidification of the media was apparent, 50% of the medium in all wells was replaced with fresh complete medium. Following 7–10 days, when wells containing untreated controls contained numerous well defined colonies of cells, the plates were stopped. To stop the plates, the medium was decanted and methanol was added to the wells for 5 min to fix adherent cells. The methanol was then decanted from the wells and Prodiff stain 2 was added to the wells for 5 min. Prodiff stain 2 was decanted from the plates and the plates were washed well under running tap water, ensuring not to dislodge fixed colonies. Plates were left to dry and then the fluorescence of the plate was then read using a Li-Cor plate reader (Odyssey) at 800 nm. Signal intensities were used to determine the level of colony growths in each well compared to untreated controls.

**Flow cytometry.** Flow cytometry was performed using a 5 laser custom BD flow cytometer, cells were prepared and run at room temperature unless specified. Following addition of antibodies, where possible cells were kept in the dark.

To determine viability,  $1 \times 10^6$  cells were washed in 2 ml PBS. Propidium iodide (PI) (50  $\mu$ g/ml) was added to cell suspension, vortexed and read within 60 s.

To determine pore formation by EP, propidium iodide (50  $\mu$ g/ml) was added to cell solution (800  $\mu$ l) directly prior to EP. Cells were not rested, and instead immediately transferred to polystyrene FACS tubes and washed in PBS. Cells were analysed immediately.

To determine surface markers, cells were washed in FACS buffer (PBS with FCS (2% v/v), sodium azide (0.01%) and EDTA (1 mM)). Cells were blocked in blocking solution (1 part FCS to 1 part FACS buffer) for 5 min. Cells were washed in FACS buffer and resuspended in a surface antibody cocktail for 30 min in the dark. Cells were washed twice before analysis. Surface stains used were CD3-APC (C363.29B, Novus-Bio), CD4-PE (RM 4–5, eBioscience), CD8-PE (53-6.7, Biolegend), F4/80-PE (BM8, Biolegend), CD11b-BV605 (M1/70, BD Biosciences), CD115-PE-Cy7 (AFS98, Invitrogen), CD206-PerCP-Cy5 (C068C2, Biolegend).

For granzyme B staining, surface markers were stained first. Cells were then fixed in 2% paraformaldehyde for 20 min. Cells were washed 3 times in Intracellular staining permeabilisation wash buffer (Biolegend) and granzyme B-PE-Cy7 antibody (QA16A02, Biolegend) was then added for 30 min. Cells were washed twice in FACS buffer.

**Arginase assay.** BMDMs were washed twice and lysed in Tris-HCl (10 mM, pH7.4) with protease inhibitors and Triton X-100 (1% v/v) for 30 min on ice with vigorous vortexing every 10 min. The samples were centrifuged at  $13,000 \times g$  for 20 min to remove debris. Protein content was normalized. Arginase activity was assayed using an Arginase Activity Assay Kit (Sigma). Briefly, cell lysate (40  $\mu$ l) was added to each well in quadruplicate. Substrate buffer (10  $\mu$ l) was added to each sample well and each sample blank well received no addition. Plates were sealed and incubated at 37 °C for 2 h. Urea reagent (200  $\mu$ l) was added to all wells to stop the reaction and substrate buffer (10  $\mu$ l) was added to the sample blank wells. Plates were incubated at RT for 60 min. The absorbance was read at 430 nm using a SpectraMax M2 (Molecular Devices).

**CD4<sup>+</sup> and CD8<sup>+</sup> T cell isolation, CFSE staining and coculture.** BMDMs were treated, washed 3 times and cultured for 24hrs. Spleens were isolated from syngenic mice and passed through a 70  $\mu$ m filter. RBCs were lysed in lysis buffer and CD4<sup>+</sup> or CD8<sup>+</sup> T cells were isolated using negative selection magnetic bead labelling kits (Miltenyi Biotec) according to the manufacturer's instructions. Separation was confirmed by analysis of CD4 and CD8 staining by flow cytometry. All cells were confirmed to be > 85% purity prior to use. Separated T cells were labelled with CFSE. The reaction was stopped by adding 10 volumes of complete medium. Cells were washed twice following stimulation with conditioned medium or cytokines and counted before being added to cocultures.  $10^5$  T cells and  $10^5$  BMDMs were seeded in 96 well suspension plates in 200  $\mu$ l and incubated for 5–7 days. Medium colour was observed daily to ensure no acidification of wells occurred.

**ELISA.** IL-4, IL-10 and IFN $\gamma$  Mouse ELISA Max™ Deluxe Sets (Biolegend) were used according to the manufacturer's instructions. Briefly, plates were blocked overnight at 4 °C in capture antibody diluted in coating buffer, all subsequent steps were performed at room temperature. Plates were emptied and washed. For each wash plates were emptied, filled with PBS + 0.05% tween and allowed to soak for 30 s 3 times. The plates were then blocked for 1 h in assay diluent (from kit) with shaking. Plates were washed and samples, standards and controls were added to the plates for 2 h with shaking. Plates were washed and detection antibody was added for 60 min with shaking. The plates were washed and diluted avidin-HRP was added for 30 min with shaking. The plates were washed and freshly made substrate solution was added. The plates were incubated in the dark until a visible colour change had occurred. The reaction was stopped by adding an equal volume of 1 M HCl and the plates were promptly read at 450 and 570 nm. 570 nm readings were subtracted from 450 nm readings before analysis.

**Statistical analysis.** Statistical analysis was performed using paired and un-paired Student's t-test for differences between groups. Flow cytometry data was analysed using FlowJo version 10.5.3. Statistical analysis was performed using Graphpad Prism version 5.03.

### Data availability

All data generated or analysed during this study are included in this published article.

Received: 24 July 2019; Accepted: 1 September 2020

Published online: 26 November 2020

### References

1. Benz, R. & Zimmermann, U. The resealing process of lipid bilayers after reversible electrical breakdown. *Biochim. Biophys. Acta* **640**, 169–178. [https://doi.org/10.1016/0005-2736\(81\)90542-3](https://doi.org/10.1016/0005-2736(81)90542-3) (1981).
2. Escande-Geraud, M. L., Rols, M. P., Dupont, M. A., Gas, N. & Teissie, J. Reversible plasma membrane ultrastructural changes correlated with electroporation in Chinese hamster ovary cells. *Biochim. Biophys. Acta* **939**, 247–259. [https://doi.org/10.1016/0005-2736\(88\)90068-5](https://doi.org/10.1016/0005-2736(88)90068-5) (1988).
3. Suzuki, D. O., Marques, C. M. & Rangel, M. M. Conductive gel increases the small tumor treatment with electrochemotherapy using needle electrodes. *Artif. Organs* **40**, 705–711. <https://doi.org/10.1111/aor.12631> (2016).
4. Marty, M. *et al.* Electrochemotherapy—an easy, highly effective and safe treatment of cutaneous and subcutaneous metastases: results of ESOPE (European Standard Operating Procedures of Electrochemotherapy) study. *EJC Suppl.* **4**, 3–13 (2006).
5. Gonthel, A., Mir, L. M. & Gehl, J. Electrochemotherapy: results of cancer treatment using enhanced delivery of bleomycin by electroporation. *Cancer Treat. Rev.* **29**, 371–387 (2003).
6. Gehl, J. *et al.* Updated standard operating procedures for electrochemotherapy of cutaneous tumours and skin metastases. *Acta Oncol.* **57**, 874–882. <https://doi.org/10.1080/0284186x.2018.1454602> (2018).
7. Falk, H. *et al.* Electrochemotherapy and calcium electroporation inducing a systemic immune response with local and distant remission of tumors in a patient with malignant melanoma—a case report. *Acta Oncol.* **56**, 1126–1131 (2017).
8. Mir, L. M. & Orlowski, S. Mechanisms of electrochemotherapy. *Adv. Drug Deliv. Rev.* **35**, 107–118 (1999).
9. Mir, L. M. Bases and rationale of the electrochemotherapy. *EJC Suppl.* **4**, 38–44 (2006).
10. Zmuc, J., Gasljevic, G. & Sersa, G. Large liver blood vessels and bile ducts are not damaged by electrochemotherapy with bleomycin in pigs. *Sci. Rep.* **9**, 3649. <https://doi.org/10.1038/s41598-019-40395-y> (2019).
11. Edhemovic, I. *et al.* Electrochemotherapy: a new technological approach in treatment of metastases in the liver. *Technol. Cancer Res. Treat.* **10**, 475–485. <https://doi.org/10.7785/tcrt.2012.500224> (2011).
12. Granata, V. *et al.* Electrochemotherapy in locally advanced pancreatic cancer: preliminary results. *Int. J. Surg. (London, England)* **18**, 230–236. <https://doi.org/10.1016/j.ijsu.2015.04.055> (2015).
13. Broholm, M. *et al.* Calcium electroporation for the treatment of colorectal cancer calcium endove—preliminary results. *Eur. J. Surg. Oncol.* **45**, e119. <https://doi.org/10.1016/j.ejso.2018.10.409> (2019).
14. Egeland, C. *et al.* Endoscopic electrochemotherapy for esophageal cancer: a phase I clinical study. *Endosc. Int. Open* **6**, E727–E734. <https://doi.org/10.1055/a-0590-4053> (2018).
15. Kunte, C. *et al.* Electrochemotherapy in the treatment of metastatic malignant melanoma: a prospective cohort study by InspECT. *Br. J. Dermatol.* **176**, 1475–1485. <https://doi.org/10.1111/bjd.15340> (2017).
16. Probst, O., Fuhrmann, I., Beyer, L. & Wiggermann, P. Electrochemotherapy as a new modality in interventional oncology: a review. *Technol. Cancer Res. Treat.* **17**, 1533033818785329. <https://doi.org/10.1177/1533033818785329> (2018).
17. Wichtowski, M. & Murawa, D. Electrochemotherapy in the treatment of melanoma. *Contemp. Oncol. (Pozn)* **22**, 8–13. <https://doi.org/10.5114/wo.2018.74387> (2018).
18. Calvet, C. Y., Famin, D., Andre, F. M. & Mir, L. M. Electrochemotherapy with bleomycin induces hallmarks of immunogenic cell death in murine colon cancer cells. *Oncoimmunology* **3**, e28131. <https://doi.org/10.4161/onci.28131> (2014).
19. Tremble, L. F., O'Brien, M. A., Soden, D. M. & Forde, P. F. Electrochemotherapy with cisplatin increases survival and induces immunogenic responses in murine models of lung cancer and colorectal cancer. *Cancer Lett.* **442**, 475–482 (2019).
20. Campana, L. G. *et al.* Bleomycin-based electrochemotherapy: clinical outcome from a single institution's experience with 52 patients. *Ann. Surg. Oncol.* **16**, 191–199 (2009).
21. Tremble, L. F., O'Brien, M. A., Forde, P. F. & Soden, D. M. ICOS activation in combination with electrochemotherapy generates effective anti-cancer immunological responses in murine models of primary, secondary and metastatic disease. *Cancer Lett.* **420**, 109–115 (2018).
22. Heppt, M. V. *et al.* Immune checkpoint blockade with concurrent electrochemotherapy in advanced melanoma: a retrospective multicenter analysis. *Cancer Immunol. Immunother.* **65**, 951–959 (2016).
23. Orlowski, S., Belehradec, J., Jr., Paoletti, C. & Mir, L. M. Transient electroporation of cells in culture. Increase of the cytotoxicity of anticancer drugs. *Biochem Pharmacol* **37**, 4727–4733 (1988).
24. Mir, L. M., Orlowski, S., Belehradec, J. Jr. & Paoletti, C. Electrochemotherapy potentiation of antitumor effect of bleomycin by local electric pulses. *Eur. J. Cancer* **27**, 68–72 (1991).
25. Gehl, J., Skovsgaard, T. & Mir, L. M. Enhancement of cytotoxicity by electroporation: an improved method for screening drugs. *Anticancer Drugs* **9**, 319–325 (1998).
26. Ciobanu, F., Golzio, M., Kovacs, E. & Teissie, J. Control by low levels of calcium of mammalian cell membrane electroporation. *J. Membr. Biol.* **251**, 221–228 (2018).
27. Frandsen, S. K. *et al.* Direct therapeutic applications of calcium electroporation to effectively induce tumor necrosis. *Cancer Res.* **72**, 1336–1341 (2012).
28. Zhou, Y., Shi, J., Cui, J. & Deng, C. X. Effects of extracellular calcium on cell membrane resealing in sonoporation. *J. Control Release* **126**, 34–43. <https://doi.org/10.1016/j.jconrel.2007.11.007> (2008).
29. Francke, A., Herold, J., Weinert, S., Strasser, R. H. & Braun-Dullaeus, R. C. Generation of mature murine monocytes from heterogeneous bone marrow and description of their properties. *J. Histochem. Cytochem.* **59**, 813–825 (2011).
30. Yang, J., Zhang, L., Yu, C., Yang, X.-F. & Wang, H. Monocyte and macrophage differentiation: circulation inflammatory monocyte as biomarker for inflammatory diseases. *Biomark. Res.* **2**, 1–1 (2014).
31. Galant, L. *et al.* Calcium electroporation: the bioelectrochemical treatment of spontaneous equine skin tumors results in a local necrosis. *Bioelectrochemistry* **129**, 251–258 (2019).
32. Staresinic, B. *et al.* Effect of calcium electroporation on tumour vasculature. *Sci. Rep.* **8**, 9412 (2018).
33. Lee, Y. S., Kim, M. H., Yi, H. S. & Kim, S. Y. CX3CR1 differentiates F4/80(low) monocytes into pro-inflammatory F4/80(high) macrophages in the liver. *Sci. Rep.* **8**, 15076. <https://doi.org/10.1038/s41598-018-33440-9> (2018).
34. Murray, P. J. Macrophage polarization. *Annu. Rev. Physiol.* **79**, 541–566. <https://doi.org/10.1146/annurev-physiol-022516-034339> (2017).

35. Sica, A., Schioppa, T., Mantovani, A. & Allavena, P. Tumour-associated macrophages are a distinct M2 polarised population promoting tumour progression: potential targets of anti-cancer therapy. *Eur. J. Cancer* **42**, 717–727. <https://doi.org/10.1016/j.ejca.2006.01.003> (2006).
36. Briken, V. & Mosser, D. M. Editorial: switching on arginase in M2 macrophages. *J. Leukoc. Biol.* **90**, 839–841. <https://doi.org/10.1189/jlb.0411203> (2011).
37. Zhu, Y. *et al.* CSF1/CSF1R blockade reprograms tumor-infiltrating macrophages and improves response to T-cell checkpoint immunotherapy in pancreatic cancer models. *Cancer Res* **74**, 5057–5069 (2014).
38. Sica, A. *et al.* Origin and functions of tumor-associated myeloid cells (TAMCs). *Cancer Microenviron.* **5**, 133–149. <https://doi.org/10.1007/s12307-011-0091-6> (2012).
39. Soncin, I. *et al.* The tumour microenvironment creates a niche for the self-renewal of tumour-promoting macrophages in colon adenoma. *Nat. Commun.* **9**, 582 (2018).
40. Frandsen, S. K. *et al.* Normal and malignant cells exhibit differential responses to calcium electroporation. *Cancer Res.* **77**, 4389–4401. <https://doi.org/10.1158/0008-5472.can-16-1611> (2017).
41. Szewczyk, A. *et al.* Calcium electroporation for treatment of sarcoma in preclinical studies. *Oncotarget* **9**, 11604–11618. <https://doi.org/10.18632/oncotarget.24352> (2018).
42. Desai, B. N. & Leitinger, N. Purinergic and calcium signaling in macrophage function and plasticity. *Front. Immunol.* **5**, 580–580 (2014).
43. Eguchi, Y., Shimizu, S. & Tsujimoto, Y. Intracellular ATP levels determine cell death fate by apoptosis or necrosis. *Cancer Res.* **57**, 1835–1840 (1997).
44. Nikolettou, V., Markaki, M., Palikaras, K. & Tavernarakis, N. Crosstalk between apoptosis, necrosis and autophagy. *Biochim. Biophys. Acta* **1833**, 3448–3459 (2013).
45. Kohlhaas, M., Nickel, A. G. & Maack, C. Mitochondrial energetics and calcium coupling in the heart. *J. Physiol.* **595**, 3753–3763. <https://doi.org/10.1113/JP273609> (2017).
46. Hansford, R. G. Relation between mitochondrial calcium transport and control of energy metabolism. *Rev. Physiol. Biochem. Pharmacol.* **102**, 1–72 (1985).
47. Sheikhpour, E. *et al.* A survey on the role of interleukin-10 in breast cancer: a narrative. *Rep. Biochem. Mol. Biol.* **7**, 30–37 (2018).
48. Finn, O. J. Cancer immunology. *N. Engl. J. Med.* **358**, 2704–2715. <https://doi.org/10.1056/NEJMra072739> (2008).
49. Prizment, A. E. *et al.* Cytotoxic T cells and granzyme B associated with improved colorectal cancer survival in a prospective cohort of older women. *Cancer Epidemiol. Biomark. Prev.* **26**, 622–631. <https://doi.org/10.1158/1055-9965.EPI-16-0641> (2017).
50. Viallard, J. F. *et al.* Th1 (IL-2, interferon-gamma (IFN-gamma)) and Th2 (IL-10, IL-4) cytokine production by peripheral blood mononuclear cells (PBMC) from patients with systemic lupus erythematosus (SLE). *Clin. Exp. Immunol.* **115**, 189–195. <https://doi.org/10.1046/j.1365-2249.1999.00766.x> (1999).
51. Tremble, L. F., Moore, A. C. & Forde, P. F. F. Melanoma-conditioned medium promotes cytotoxic immune responses by murine bone marrow-derived monocytes despite their expression of “M2” markers. *Cancer Immunol. Immunother.* **68**, 1455 (2019).
52. Hoehjolt, K. L. & Muzic, T. Calcium electroporation and electrochemotherapy for cancer treatment: importance of cell membrane composition investigated by lipidomics, calorimetry and in vitro efficacy. *Sci. Rep.* **9**, 4758 (2019).
53. Stefanou, A. & Siderov, J. Medical errors. Dosage nomenclature of bleomycin needs to be standardised to avoid errors. *BMJ (Clin. Res.)* **322**, 1423–1424 (2001).

## Acknowledgements

We would like to thank Breakthrough Cancer Research who funded this manuscript.

## Author contributions

L.F.T.: study design, wet lab work and paper writing. C.C.B.B.H. and P.F.F.: study design, evaluation of results and paper writing.

## Competing interests

The authors declare no competing interests.

## Additional information

**Correspondence** and requests for materials should be addressed to P.F.F.

**Reprints and permissions information** is available at [www.nature.com/reprints](http://www.nature.com/reprints).

**Publisher's note** Springer Nature remains neutral with regard to jurisdictional claims in published maps and institutional affiliations.



**Open Access** This article is licensed under a Creative Commons Attribution 4.0 International License, which permits use, sharing, adaptation, distribution and reproduction in any medium or format, as long as you give appropriate credit to the original author(s) and the source, provide a link to the Creative Commons licence, and indicate if changes were made. The images or other third party material in this article are included in the article's Creative Commons licence, unless indicated otherwise in a credit line to the material. If material is not included in the article's Creative Commons licence and your intended use is not permitted by statutory regulation or exceeds the permitted use, you will need to obtain permission directly from the copyright holder. To view a copy of this licence, visit <http://creativecommons.org/licenses/by/4.0/>.

© The Author(s) 2020