



# Is there any effect of pneumoperitoneum pressure on coagulation and fibrinolysis during laparoscopic cholecystectomy?

Turgut Donmez<sup>1,\*</sup>, Sinan Uzman<sup>2,\*</sup>, Dogan Yildirim<sup>3</sup>, Adnan Hut<sup>3</sup>, Huseyin Imam Avaroglu<sup>1</sup>, Duygu Ayfer Erdem<sup>4</sup>, Erdinc Cekic<sup>5</sup> and Fazilet Erozgen<sup>3</sup>

<sup>1</sup> Department of General Surgery, Lutfiye Nuri Burat State Hospital, Istanbul, Turkey

<sup>2</sup> Department of Anesthesiology and Reanimation, Haseki Training and Research Hospital, Istanbul, Turkey

<sup>3</sup> Department of General Surgery, Haseki Training and Research Hospital, Istanbul, Turkey

<sup>4</sup> Department of Anesthesiology and Reanimation, Lutfiye Nuri Burat State Hospital, Istanbul, Turkey

<sup>5</sup> Department of Ear Nose Throat Surgery, Lutfiye Nuri Burat State Hospital, Istanbul, Turkey

\* These authors contributed equally to this work.

## ABSTRACT

**Background.** Laparoscopic cholecystectomies (LC) are generally performed in a 12 mmHg-pressured pneumoperitoneum in a slight sitting position. Considerable thromboembolism risk arises in this operation due to pneumoperitoneum, operation position and risk factors of patients. We aim to investigate the effect of pneumoperitoneum pressure on coagulation and fibrinolysis under general anesthesia.

**Material and Methods.** Fifty American Society of Anesthesiologist (ASA) I–III patients who underwent elective LC without thromboprophylaxis were enrolled in this prospective study. The patients were randomly divided into two groups according to the pneumoperitoneum pressure during LC: the 10 mmHg group ( $n = 25$ ) and the 14 mmHg group. Prothrombin time (PT), thrombin time (TT), International Normalized Ratio (INR), activated partial thromboplastin time (aPTT) and blood levels of d-dimer and fibrinogen were measured preoperatively (pre), one hour (post1) and 24 h (post24) after the surgery. Moreover, alanine amino transferase, aspartate amino transferase and lactate dehydrogenase were measured before and after the surgery. These parameters were compared between and within the groups.

**Results.** PT, TT, aPTT, INR, and D-dimer and fibrinogen levels significantly increased after the surgery in both of the groups. D-dimer level was significantly higher in 14-mmHg group at post24.

**Conclusion.** Both the 10-mmHg and 14-mmHg pressure of pneumoperitoneum may lead to affect coagulation tests and fibrinogen and D-dimer levels without any occurrence of deep vein thrombosis, but 14-mmHg pressure of pneumoperitoneum has a greater effect on D-dimer. However, lower pneumoperitoneum pressure may be useful for the prevention of deep vein thrombosis.

Submitted 29 March 2016

Accepted 28 July 2016

Published 8 September 2016

Corresponding author

Sinan Uzman,

drsinanuzman@yahoo.com

Academic editor

Yoshinori Marunaka

Additional Information and  
Declarations can be found on  
page 10

DOI 10.7717/peerj.2375

© Copyright

2016 Donmez et al.

Distributed under

Creative Commons CC-BY 4.0

OPEN ACCESS

**Subjects** Anaesthesiology and Pain Management, Gastroenterology and Hepatology, Hematology, Surgery and Surgical Specialties

**Keywords** Laparoscopic cholecystectomy, Pneumoperitoneum, Fibrinogen, D-dimer, Prothrombin time, Activated partial thromboplastin time, Thrombin time, International normalized ratio, General anesthesia

## INTRODUCTION

After the introduction of laparoscopic surgery, laparoscopic cholecystectomies (LCs) have been accepted as a gold-standard procedure for the symptomatic gall bladder stone (*Himal, 2002; Suter & Meyer, 2001*). In order to achieve better visibility of the surgical field, the “CO<sub>2</sub> pneumoperitoneum technique” is used. There are many advantages to LCs such as a shorter hospitalization time, minimal postoperative pain and an easy recovery. However, there are also a few systemic disadvantages due to increases in intra-abdominal pressure. Insufflation of CO<sub>2</sub> into the abdominal cavity results in elevation of the diaphragm and the risk of regurgitation, a decrease in lung volume and compliance, increment in airway resistance and an increase in the ventilation perfusion ratio. In the cardiovascular system, intra-abdominal pressure causes an increase in systemic venous resistance (SVR) and mean arterial pressure (MAP) and a decrease in venous return and cardiac output due to pressure on the inferior vena cava. If intraoperative CO<sub>2</sub> pneumoperitoneum lasts a long time, renal artery flow decreases and results in a decreased glomerular filtration ratio (GFR) and urinary output. Mesenteric artery, intestinal mucosa, hepatic and splanchnic field perfusion decreases due to increases in intra-abdominal pressure (*Diebel et al., 1992; Hashikura et al., 1994*).

There are three major risk factors for deep vein thrombosis (DVT) during LCs: surgical trauma, pressure on the inferior vena cava and venous stasis on the lower extremities due to the anti-Trendelenburg position. Diagnosing DVT is difficult, but colored Doppler ultrasonography is a non-invasive and effective method for diagnosing DVT (*Prone, Bounameaux & Perrier, 2001*).

There have been studies advocating both mechanical and pharmacological DVT prophylaxis (*London: Royal College of Physicians, 2010; Okuda et al., 2002*), but there have also been other studies suggesting that prophylaxis during LCs is unnecessary (*Agnelli, 2004; Blake, Toker & Dunn, 2001; Lindberg, Bergqvist & Rasmussen, 1997*).

Some investigations have revealed increases in D-dimer and plasma fibrinogen levels during LCs (*Milic et al., 2007; Vecchio et al., 2003*). Coagulation and fibrinolysis cascade elements such as the prothrombin time (PT), the International Normalized Ratio (INR) and the activated partial thromboplastin time (aPTT) are some of the parameters that have been previously studied (*Vecchio et al., 2003; Martinez-Ramos et al., 1999*).

In this study, we aimed to record the coagulation factors and fibrinolysis response during different pneumoperitoneum-pressure LCs and to determine whether pressure decreases help to lower the risk of DVT.

## MATERIAL AND METHODS

### Study sample

After the Haseki Training and Research Hospital Ethics Committee (Location) approved the study (number 236) on 22 July 2015, 50 patients with symptomatic gall bladder stone who gave consent to participate and accepted the study's terms were included. We focused on patients recruited between 24 July 2015 and 24 January 2016. All of the patients were diagnosed using hepatobiliary ultrasonography. Lower-extremity venous Doppler

ultrasonography was performed on all patients the day prior to surgery and on the 7th postoperative day. Patients with DVT or a history of pulmonary emboli, anticoagulant usage, malignancy, acute cholecystitis, bleeding diathesis or individuals who were pregnant were excluded from the study. All of the operations were performed by same surgeon and anesthesiologist. All of the patients were diagnosed using ultrasonography by the same radiologist, and all cases of lower-extremity doppler ultrasonography were performed by a different radiologist.

### **Surgery and anesthesia procedure**

All surgical operations were performed successfully under general anesthesia without any complications. A standardized LC and anesthesia protocol were used for all patients. Propofol 2–2.5 mg/kg and fentanyl 1  $\mu$ g/kg were used for the induction of anesthesia. Muscle relaxation for endotracheal intubation was obtained with rocuronium 0.6 mg/kg. Patients were ventilated with controlled ventilation (VCV) mode using an anesthesia device (Dräger Primus<sup>®</sup>; Dräger Medical Systems, Inc. Danvers, MA, USA). Tidal volume (Vt) was set as 6–8 ml per kg of ideal body weight and positive end expiratory pressure (PEEP) was set as 5 cmH<sub>2</sub>O. Respiratory rate was adjusted to maintain normocarbica (P<sub>ET</sub>CO<sub>2</sub> = 32–36 mmHg). Maintenance of anesthesia was provided with sevoflurane (1.5–2%) with an oxygen-air mixture (FiO<sub>2</sub> = 0.4). After the termination of anesthesia procedure patients were placed in Trendelenburg position. A small infraumbilical incisions were performed and a Veress needle was inserted. Pneumoperitoneum was achieved using CO<sub>2</sub> insufflation. Patients were randomly assigned to one of two groups according to the pressure of pneumoperitoneum: the 10-mmHg group or the 14-mmHg group. Later, the patient was placed in reverse Trendelenburg position with a slight left angle. All of the patients were operated on using a standart 4-port LC technique. None of the patients received prophylactic Low Molecular Weight Heparin (LMWH). Elastic socks were used on each patient prior to surgery to prevent deep venous thrombosis. The patients were discharged between the postoperative 26th and 48th hours.

### **Patient evaluation**

All of the patients were examined in a detailed manner. Preanesthetic evaluation was performed by the same anesthesiologist the day before the of surgery. Age, sex, body mass index (BMI), American Society of Anesthesiologist (ASA) classification and comorbidities of the patients were recorded. Drain usage, surgical complications, surgery time, pneumoperitoneum time and oral intake time were also recorded.

Coagulation and fibrinolysis were assessed by prothrombin time (PT), activated partial thromboplastin time (aPTT), thrombin time (TT), international normalized ratio (INR) and fibrinogen and D-dimer levels from the venous blood samples obtained at the morning of surgery and one hour and 24 h after the surgery. An automatic coagulation analyser (Diagnostica Stago, STA Compact, France) was used for the analysis of blood samples. We used an STA—Neoplastine CI plus kit for the PT and INR measurements (normal levels 12–15 sec and 0.9–1.2), and we used the STA e PTT A 5 kit for the aPTT measurements (normal levels 28–40 sec). We used the STA—fibrinogen 5 kit for the fibrinogen

measurements (normal levels 200–400 mg/dL). The STA Liatest D-DI kit was used for the measurements (normal <0.5 mg/L).

Serum alanine amino transferase (ALT), aspartate amino transferase (AST) and lactate dehydrogenase (LDH) were measured before the surgery and 24h after the surgery to evaluate liver function. ALT, AST and LDH were measured using an automated AU680 clinical chemistry system analyser (Beckman Coulter Inc, Brea, CA, USA).

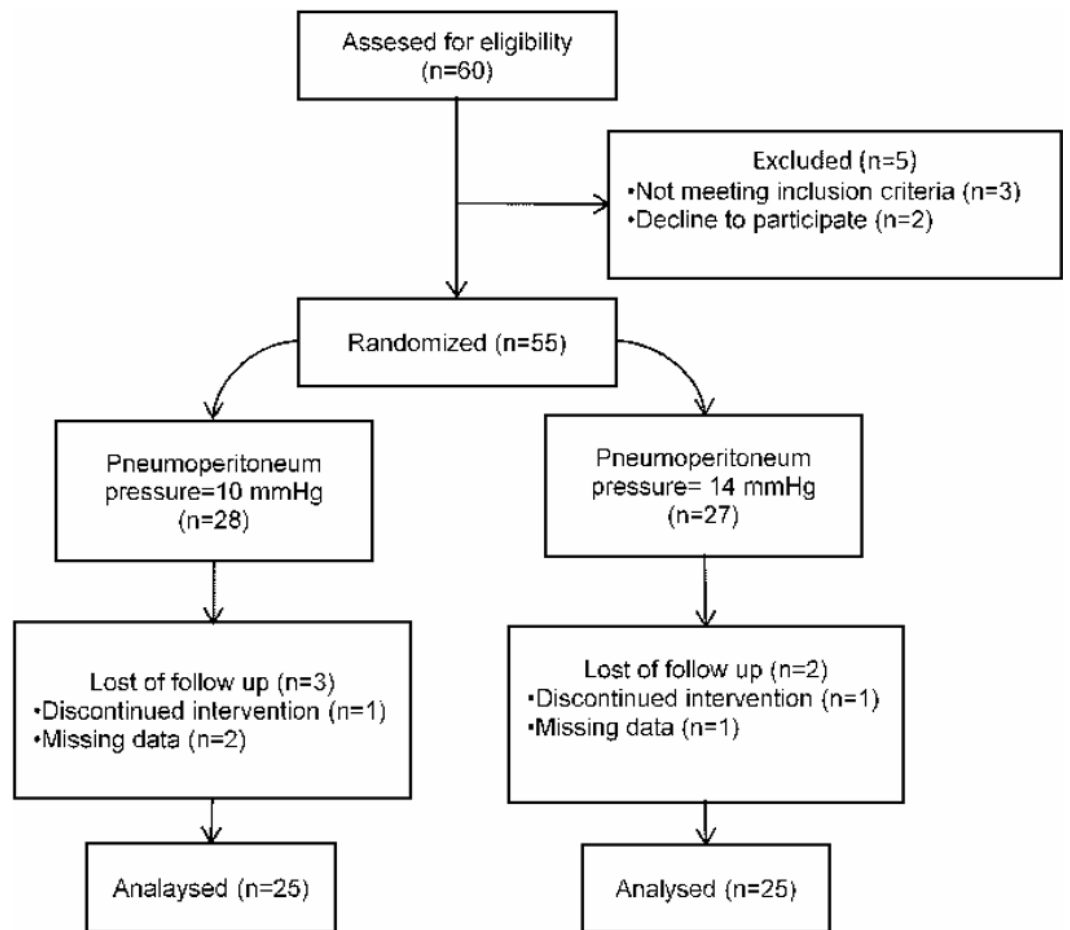
### Statistical analysis

We performed the statistical analysis using the SPSS software package for Windows (Statistical Package for Social Sciences, version 15.0; SPSS Inc., Chicago, Illinois, USA). Quantitative variables (age, weight, height, BMI, surgery time, pneumoperitoneum time and oral intake time, PT, aPTT, TT, INR, fibrinogen, D-dimer, ALT, AST and LDH) were expressed as mean  $\pm$  standard deviation (SD) and/or median (min–max). Categorical variables (sex, ASA classification, coexisting disease, drain usage and surgical complication) were expressed as patient numbers. We analyzed the normality of quantitative variables using the Kolmogorov–Smirnov test, and we compared normally distributed variables using the Student's *t*-test or to the Mann–Whitney U test when the variables were not normally distributed. The changes in PT, aPTT, TT, INR, fibrinogen, D-dimer, ALT, AST and LDH by time was investigated using repeated measures analysis of variance. Greenhouse-Geisser correction was used in the absence of sphericity assumption. Bonferroni test was used in postHoc multiple comparisons. Chi-square and Fisher's Exact tests were used to compare the categorical variables between the groups. Based on a previous study D-dimer level after the LC with the 12 mmHg pressure of pneumoperitoneum was  $315.26 \pm 83.86$  ng/ml. Power analysis with  $\alpha = 0.05$  and  $\beta = 0.2$  for determining the 15% reduction on the D-dimer level with 10 mmHg pressure of pneumoperitoneum revealed that each group required a minimum of 24 patients (*Garg et al., 2009*). We adopted a value of  $p < 0.05$  as being statistically significant.

## RESULTS

Sixty patients who underwent LC due to symptomatic gall bladder stone were included this prospective randomized study. Ten patients excluded from the study. Fifty patients were randomly assigned to undergo LC with 10-mmHg of pneumoperitoneum pressure ( $n = 25$ ), or 14-mmHg of pneumoperitoneum pressure ( $n = 25$ ) (*Fig. 1*). Randomization was performed by a computer. The surgical procedure was completed successfully in all patients. Adequate exposure of surgical field was achieved in both groups of patients. There was no significant difference between the groups in terms of demographic characteristics, ASA classification, coexisting disease (hypertension, diabetes mellitus and chronic obstructive pulmonary disease), drain usage, surgical complication, surgery time, pneumoperitoneum time and oral intake time (*Table 1*).

We observed 1 postoperative wound infection (4%) in group I, which was easily managed with medical treatment. We used a negative-pressure hemovac drain for five patients (20%) in group I and three patients (12%) in group II due to minimal leakage from the liver bed. All of the drains were discharged on the 1st postoperative day.



**Figure 1** Flowchart diagram of the study.

Peripheal oxygen saturation was  $\geq 98\%$  and  $P_{ET}CO_2$  was maintained between 32–36 mmHg by adjusting the respiratory rate. We didn't observe hemodynamic adverse events during pneumoperitoneum such as hypertension (systolic arterial pressure  $\geq 160$  mmHg or diastolic arterial pressure  $\geq 90$  mmHg), hypotension (mean arterial pressure  $\leq 70$  mmHg), bradycardia (heart rate  $\leq 50$  bpm) or tachycardia (heart rate  $\geq 100$  bpm).

We found a significant increase in PT 24 h after the surgery compared to preoperative value in the 10 mmHg group ( $p = 0.048$ ) and the 14 mmHg group ( $p < 0.001$ ). We observed a significant increase in APTT 24 h after the surgery compared to preoperative value in the 10 mmHg group ( $p < 0.001$ ). In the 14 mmHg group there was a significant increase in APTT 1 h ( $p < 0.001$ ) and 24 h ( $p < 0.001$ ) after the surgery compared to preoperative value. There were significant decreases in TT 1 h and 24 h after the surgery in both of groups compared to preoperative values ( $p < 0.001$ ). INR significantly increased in the 14 mmHg group 24 h after the surgery ( $p < 0.001$ ). D-dimer and fibrinogen significantly increased in both of groups 1 h and 24 h after the surgery ( $p < 0.001$ ).

**Table 1** Characteristics of the patients.

Characteristics	10 mmHg ( <i>n</i> = 25)	14 mmHg ( <i>n</i> = 25)	<i>P</i> Value
Age (y)	47 ± 15	52 ± 13	0.174
Gender, M/F	5/20	6/19	0.733
Weight (kg)	78 ± 13	76 ± 11	0.606
Height (cm)	165 ± 6	165 ± 6	0.930
BMI (kg/cm <sup>2</sup> )	28.1 ± 4.1	27.8 ± 4.5	0.819
ASA I/II/III	12/12/1	14/9/2	0.633
Co-existing disease			
Hypertension	6	8	0.529
Diabetes mellitus	4	5	1.000
COPD	2	2	1.000
Drain usage	5	3	0.702
Surgical complication	1	0	>0.999
Surgery time (min)	54 ± 9	57 ± 6	0.300
Pneumoperitoneum time (min)	35 ± 8	36 ± 7	0.393
Oral intake time (h)	8.44 ± 0.71	8.36 ± 0.70	0.772

**Notes.**

M, male; F, female; BMI, body mass index; ASA, American Society of Anesthesiologist; COPD, Chronic obstructive pulmonary disease.

Post 24 value of D-dimer was significantly higher in the 14 mmHg group compared to the 10 mmHg group. We didn't observe any significant difference between the groups on pre, post1 and post24 values of PT, APTT, TT, INR and fibrinogen.

The PT, aPTT, TT, INR, fibrinogen and D-dimer values were summarized in [Table 2](#).

There were no significant differences between the groups in terms of ALT, AST and LDH values. We found a significant increase in AST after the surgery compared to preoperative value ( $p = 0.015$ ).

The ALT, AST and LDH values were summarized in [Table 3](#).

## DISCUSSION

Pneumoperitoneum applied during LCs may result in many changes in the cardiovascular, hormonal and neuroendocrine systems. There have been reports of sudden cardiac arrest or pulmonary edema cases in the literature. Additionally, decreases in venous return, portal vein flow and intra-abdominal organ perfusion have been associated with pneumoperitoneum pressure in previous studies ([Joris et al., 1993](#); [Jakimowicz, Stultiens & Smulders, 1998](#)).

According to the International Abdominal Compartment Syndrome Consensus Conference 2004, intra-abdominal pressure is accepted as a steady-state pressure; it increases with inspiration, decreases with expiration and correlates with directly solid organ volumes, ascites, blood, lesions occurring (tumor, pregnancy) and lesions restricting the expansion of the abdominal wall (burns, scars, edema). Compression effects and the peritoneal absorption of CO<sub>2</sub> increase cardiovascular and pulmonary complications ([Malbrain, 2001](#); [Windberger et al., 1999](#)).

**Table 2** Comparison of coagulation and fibrinolysis between the groups.

	10 mmHg	14 mmHg	P1	P2	P3
PT					
Pre	11.94 ± 0.64	11.66 ± 0.79	–	–	0.175
Post1	12.10 ± 0.53	11.99 ± 0.57	0.345 <sup>a</sup>	0.071 <sup>a</sup>	0.505
Post24	12.43 ± 0.86	12.56 ± 0.66	0.048 <sup>b</sup>	<0.001 <sup>b</sup>	0.557
aPTT					
Pre	22.80 ± 1.48	22.01 ± 0.99	–	–	0.575
Post1	23.42 ± 1.54	23.32 ± 1.36	0.248 <sup>a</sup>	<0.001 <sup>a</sup>	0.129
Post24	24.54 ± 2.16	25.01 ± 1.65	<0.001 <sup>b</sup>	<0.001 <sup>b</sup>	0.429
TT					
Pre	19.88 ± 1.58	22,38 ± 4,78	–	–	0.055
Post1	17.78 ± 0.74	17.80 ± 2.68	<0.001 <sup>a</sup>	<0.001 <sup>a</sup>	0.971
Post24	16.06 ± 1.05	16.12 ± 0.95	<0.001 <sup>b</sup>	<0.001 <sup>b</sup>	0.833
INR					
Pre	1.00 ± 0.05	0.98 ± 0.06	–	–	0.183
Post1	1.02 ± 0.04	0.99 ± 0.04	0.199 <sup>a</sup>	0.392 <sup>a</sup>	0.058
Post24	1.04 ± 0.07	1.05 ± 0.05	0.067 <sup>b</sup>	<0.001 <sup>b</sup>	0.618
D-dimer					
Pre	0.31 ± 0.08	0.31 ± 0.07	–	–	0.306
Post1	0.56 ± 0.22	0.68 ± 0.24	<0.001 <sup>a</sup>	<0.001 <sup>a</sup>	0.307
Post24	0.91 ± 0.34	1.51 ± 0.30	<0.001 <sup>b</sup>	<0.001 <sup>b</sup>	<0.001
Fibrinogen					
Pre	224 ± 42	225 ± 28	–	–	0.906
Post1	278 ± 50	282 ± 42	<0.001 <sup>a</sup>	<0.001 <sup>a</sup>	0.797
Post24	356 ± 57	359 ± 42	<0.001 <sup>b</sup>	<0.001 <sup>b</sup>	0.802

**Notes.**<sup>a</sup>Between pre-post1 values.<sup>b</sup>Between pre-post24 values.

PT, prothrombin time; aPTT, activated partial thromboplastin time; TT, Thrombin time; INR, international normalized ratio; pre, preoperative; post1, postoperative 1st hour; post24, postoperative 24th hour; P1, within group (10 mmHg); P2, within group (14 mmHg); P3, between groups.

In the present study we didn't find any significant difference between the groups with respect to the the ALT, AST and LDH values. In 14 mmHg group there was a statistically significant increase in AST value postoperatively, but this was not clinically important.

There may be a transient postoperative hepatic transaminase increase associated with laparoscopic surgeries. This increase is believed to be associated largely with CO<sub>2</sub> pneumoperitoneum. In the majority of cases, this transient increase is resolved without any clinical findings. *Tan et al. (2003)* compared laparotomy and laparoscopic surgeries with postoperative serum liver enzymes. They observed a larger increase in AST and ALT levels during the postoperative 24–48th hours for laparoscopic cases than for laparotomy cases. There was a slight increase in total and direct bilirubin levels, but no changes were observed in ALP, LDH or GGT levels. *Giraud et al. (2001)* reported that there were very few changes in hepatic parameters comparing 14 mmHg CO<sub>2</sub> pneumoperitoneum and gas-free laparoscopy. According to *Bendet et al. (1999)*, postoperative aminotransferase

**Table 3** Comparison of ALT, AST and LDH values between the groups.

	10 mmHg	14 mmHg	P1	P2	P3
ALT (U/l)					
Pre	17 ± 10	22 ± 13			0.091
Post	19 ± 9	23 ± 8	0.438	0.767	0.066
AST (U/l)					
Pre	25 ± 10	21 ± 12			0.219
Post	26 ± 12	27 ± 10	0.769	0.015	0.703
LDH (U/l)					
Pre	208 ± 62	199 ± 61			0.603
Post	271 ± 200	232 ± 88	0.143	0.081	0.379

**Notes.**

ALT, alanine amino transferase; AST, aspartate amino transferase; LDH, lactate dehydrogenase; pre, preoperative; post, postoperative; P1, within group (10 mmHg); P2, within group (14 mmHg); P3, between groups.

Normal serum values of ALT and AST were 0–35 U/l for female and 0–50 U/l for male. Normal serum value for LDH was 0–248 U/l.

levels increased due to Kupffer and endothelial cell injury, especially during LCs. [Volz et al. \(1999\)](#) reported that increases in intra-abdominal pressure over a short period of time may affect portal vein flow. These authors demonstrated an ondulation in portal vein flow. They reported that this ondulation causes a reperfusion injury, particularly in the Kupffer and endothelial cells lining the hepatic sinusoids. This injury in turn resulted in a liver enzyme increase. In this study, we found an increase in blood coagulation parameters during the postoperative period. This increase is believed to be related to the Kupffer and endothelial injury due to intra-abdominal pressure and hepatobiliary manipulation. Intra-abdominal pressure affects the cardiovascular system via an increase in systemic vascular resistance and mean arterial pressure and a decrease in venous return and cardiac output due to pressure on the inferior vena cava. If the intraoperative CO<sub>2</sub> pneumoperitoneum lasts for a longer period of time, this may result in a decrease in renal artery flow, GFR and urinary output ([Joris et al., 1991](#); [Takroui, 1999](#)). The pressure effects of pneumoperitoneum can be partially prevented by applying a lower insufflation pressure ([Neudecker et al., 2002](#); [Grusamy, Samraj & Davidson, 2009](#)). In our study, we compared the effects of 14 mmHg and 10 mmHg pressure pneumoperitoneum on coagulation parameters (i.e., aPTT and PT). We found a statistically significant increase in both of the groups. Furthermore, we found an increase of aPTT and PT levels in the higher-pressure group, but this difference was not statistically significant.

An LC carries a low risk of DVT ([Blake, Toker & Dunn, 2001](#)). Although INR, and fibrinogen increased in the 24th postoperative hour, affects and disturbs the coagulation cascade, there are studies that present contradictory findings ([Marakis et al., 2006](#)). It has been shown that D-dimer was the only true sensitive marker of coagulation and fibrinolysis whereas the other parameters such as PT, APTT are indirect indicators of coagulation of fibrinolysis ([Milic et al., 2007](#)). It has been reported on previous studies that pneumoperitoneum during LC may cause coagulation and platelet activation and resulted in postoperative hypercoagulability ([Amin et al., 2014](#)). [Ido et al. \(1995\)](#) has shown



that blood flow velocity in the femoral vein was reduced during pneumoperitoneum proportionally with the magnitude of intraabdominal pressure. However, increased intraabdominal pressure leads the venous pooling in the lower extremities.

In the present study, significant increases were seen in the postoperative levels of INR, D-dimer and fibrinogen in both groups. The only difference between the groups was observed in D-dimer after the surgery. We found that higher pressure of pneumoperitoneum cause more increase in D-dimer after the surgery. A three- and five-fold increase in D-dimer in the 10 mmHg group and in the 14 mmHg group, respectively, were seen 24h after the surgery.

*Garg et al. (2009)* reported on 50 LC cases with standard 12 mmHg pneumoperitoneum pressure. These authors found that aPTT and antithrombin 3 levels decreased at the postoperative 6th and 24th hours and that these decreases resulted in activation. Furthermore, they did not observe any instances of clinical DVT in their patients. Another study by *Ntourakis et al. (2011)* reported that PT, aPTT, INR, D-dimer, fibrinogen and FDP levels increased during the postoperative period in a statistically significant way. We also noted a significant increase during the postoperative 1st and 24th hours in PT, aPTT, INR, fibrinogen and D-dimer levels. At the same time, the TT, which is associated with the intrinsic and extrinsic pathways of coagulation cascade, significantly decreased within the groups. However, when we compared the different pressure groups similar to other parameters, there was no significant difference in TT. According to the literature, this increase in PT and INR levels is believed to decrease the DVT risk associated with LCs (*Morino, Giraud & Festa, 1998; Hasukic, 2005*).

We did not find any differences between the groups in terms of demographics, anesthesia technique, surgical technique or operation time. The only difference was the CO<sub>2</sub> pneumoperitoneum pressure difference between the groups. We only recovered a statistically significant difference in D-dimer levels, although we noted an increase in PT, aPTT, INR and fibrinogen levels in the 14 mmHg pressure group. We additionally recovered a more pronounced decrease in TT levels in the 14 mmHg pressure group, although this finding was not statistically significant. Based on our results, we can conclude that higher-pressure (14 mmHg) pneumoperitoneum has a more negative effect on coagulation factors and fibrinolysis than lower-pressure (10 mmHg) pneumoperitoneum.

There have been other studies comparing laparoscopic and open cases that revealed similar results for coagulation factors (*Martinez-Romos et al., 1998; Vander Velpen et al., 1994*). However, there has been no study thus far comparing the effect of pneumoperitoneum pressure levels on coagulation cascade and fibrinolysis. In this investigation, we found more negative effects on the coagulation system with higher pressures.

## CONCLUSION

We found that pneumoperitoneum conducted using 10 mmHg and 14 mmHg pressures has a similar effect on human hemodynamics and metabolism and resulted in a significant increase in coagulation factors in both groups. According to increases in coagulation parameters, higher CO<sub>2</sub> pressure (14 mmHg) pneumoperitoneum has a more negative

effect on coagulation cascade and fibrinolysis. All these changes were reversible, and we did not observe any complications in either group. We did not encounter clinical or ultrasonographic DVT or pulmonary emboli in this study population. Based on the results of this study, we suggest a lower pressure of pneumoperitoneum pressure (10 mmHg) during LC because of the less pronounced effects on the coagulation and fibrinolytic system.

## ADDITIONAL INFORMATION AND DECLARATIONS

### Funding

The authors received no funding for this work.

### Competing Interests

The authors declare there are no competing interests.

### Author Contributions

- Turgut Donmez conceived and designed the experiments, performed the experiments, analyzed the data, contributed reagents/materials/analysis tools, wrote the paper, prepared figures and/or tables, reviewed drafts of the paper, reviewed literature.
- Sinan Uzman conceived and designed the experiments, analyzed the data, wrote the paper, prepared figures and/or tables, reviewed drafts of the paper, literature review.
- Dogan Yildirim and Adnan Hut analyzed the data, reviewed drafts of the paper, reviewed literature.
- Huseyin Imam Avaroglu and Duygu Ayfer Erdem conceived and designed the experiments, performed the experiments, analyzed the data, contributed reagents/materials/analysis tools, reviewed drafts of the paper, reviewed literature.
- Erdinc Cekic analyzed the data, contributed reagents/materials/analysis tools, wrote the paper, prepared figures and/or tables, reviewed drafts of the paper, reviewed literature.
- Fazilet Erozgen analyzed the data, prepared figures and/or tables, reviewed drafts of the paper, reviewed literature

### Human Ethics

The following information was supplied relating to ethical approvals (i.e., approving body and any reference numbers):

Ethics Committee of Haseki Training and Research Hospital: July 22 2015/236.

### Data Availability

The following information was supplied regarding data availability:

The raw data has been supplied as [Supplemental Files](#).

### Supplemental Information

Supplemental information for this article can be found online at <http://dx.doi.org/10.7717/peerj.2375#supplemental-information>.

## REFERENCES

- Agnelli G. 2004.** Prevention of venous thromboembolism in surgical patients. *Circulation* 49:197–202 DOI 10.1161/01.CIR.0000150639.98514.6c.
- Amin B, Zhang C, Yan W, Sun Z, Zhang Y, Du D, Gong K. 2014.** Effects of pneumoperitoneum of laparoscopic cholecystectomy on the coagulation system of patients: a prospective observational study. *Chinese Medical Journal* 127(14):2599–2604 DOI 10.3760/cma.j.issn.0366-6999.20131264.
- Bendet N, Morozov V, Lavi R, Pankski M, Halevy A, Scapa E. 1999.** Does laparoscopic cholecystectomy influence peri-sinusoidal cell activity? *Hepatogastroenterology* 46(27):1603–1606.
- Blake AM, Toker SI, Dunn E. 2001.** Deep venous thrombosis prophylaxis is not indicated for laparoscopic cholecystectomy. *Journal of the Society of Laparoendoscopic Surgeons* 5(3):215–219.
- Diebel L, Wilson RF, Dulchavsky SA, Saxe J. 1992.** Effect of increased intra-abdominal pressure on hepatic arterial, portal venous and hepatic microcirculatory blood flow. *The Journal of Trauma* 33:279–282 DOI 10.1097/00005373-199208000-00019.
- Garg PK, Teckchandani N, Hadke NS, Chander J, Nigam S, Puri SK. 2009.** Alteration in coagulation profile and incidence of DVT in laparoscopic cholecystectomy. *International Journal of Surgery* 7(2):130–135 DOI 10.1016/j.ijssu.2008.12.036.
- Giraud G, Brachet Contul R, Caccetta M, Morino M. 2001.** Gasless laparoscopy could avoid alterations in hepatic function. *Surgical Endoscopy* 15(7):741–746 DOI 10.1007/s004640090020.
- Grusamy KS, Samraj K, Davidson BR. 2009.** Low pressure versus standard pressure pneumoperitoneum in laparoscopic cholecystectomy. *Cochrane Database of Systemic Reviews* (2):Article CD006930 DOI 10.1002/14651858.CD006930.pub2.
- Hashikura Y, Kawasaki S, Munakata Y, Hashimoto S, Hayashi K, Makuuchi M. 1994.** Effects of peritoneal insufflation on hepatic and renal blood flow. *Surgical Endoscopy* 8:759–761 DOI 10.1007/BF00593435.
- Hasukic S. 2005.** Postoperative changes in liver function tests: randomized comparison of low- and high-pressure laparoscopic cholecystectomy. *Surgical Endoscopy* 19(11):1451–1455 DOI 10.1007/s00464-005-0061-5.
- Himal HS. 2002.** Minimally invasive (laparoscopic) surgery. *Surgical Endoscopy* 16(12):1647–1652 DOI 10.1007/s00464-001-8275-7.
- Ido K, Suzuki T, Kimura K, Taniguchi Y, Kawamoto C, Isoda N, Nagamine N, Ioka T, Kumagai M, Hirayama Y. 1995.** Lower-extremity venous stasis during laparoscopic cholecystectomy as assessed using color Doppler ultrasound. *Surgical Endoscopy* 9:310–313 DOI 10.1007/BF00187775.
- Jakimowicz J, Stultiens G, Smulders F. 1998.** Laparoscopic insufflation of abdomen reduces portal venous flow. *Surgical Endoscopy* 12(29):129–132 DOI 10.1007/s004649900612.

- Joris J, Ledoux D, Honore P, Lamy M. 1991.** Ventilatory effects of CO<sub>2</sub> insufflation during laparoscopic cholecystectomy. *Anesthesiology* **75(Suppl:A)**:121 DOI [10.1097/00000542-199109001-00121](https://doi.org/10.1097/00000542-199109001-00121).
- Joris JL, Noirot DP, Legrand MJ, Jacquet NJ, Lamy ML. 1993.** Hemodynamic changes during laparoscopic cholecystectomy. *Anesthesia and Analgesia* **76(5)**:1067–1071.
- Lindberg F, Bergqvist D, Rasmussen I. 1997.** Incidence of thromboembolic complications after laparoscopic cholecystectomy: review of the literature. *Surgical Laparoscopy and Endoscopy* **7(4)**:324–331 DOI [10.1097/00019509-199708000-00014](https://doi.org/10.1097/00019509-199708000-00014).
- London: Royal College of Physicians (UK). 2010.** Venous thromboembolism: reducing the risk of venous thromboembolism (deep vein thrombosis and pulmonary embolism) in patients admitted to hospital. Available at [http://www.ncbi.nlm.nih.gov/pubmedhealth/PMH0051769/pdf/PubMedHealth\\_PMH0051769.pdf](http://www.ncbi.nlm.nih.gov/pubmedhealth/PMH0051769/pdf/PubMedHealth_PMH0051769.pdf).
- Malbrain ML. 2001.** Intra-abdominal pressure in the intensive care unit: clinical tool or toy? In: Vincent JL, ed. *Yearbook of intensive care and emergency medicine*. New York: Springer, 547–588.
- Marakis G, Pavlidis TE, Ballas K, Karvounaris D, Rafaidis S, Sakantamis AK. 2006.** Changes in coagulation and fibrinolysis during laparoscopic cholecystectomy. *Journal of Laparoendoscopic Advanced Surgical Techniques* **16(6)**:582–586 DOI [10.1089/lap.2006.16.582](https://doi.org/10.1089/lap.2006.16.582).
- Martinez-Ramos C, Lopez Pastor A, Nunez Pena JR, Gopegui M, Sanz Lopez R, Jorgensen T, Pastor L, Fernandez-Chacon JL, Tamames-Escobar S. 1999.** Changes in hemostasis after laparoscopic cholecystectomy. *Surgical Endoscopy* **13(5)**:476–479 DOI [10.1007/s004649901016](https://doi.org/10.1007/s004649901016).
- Martinez-Ramos C, Lopez Pastor A, Nunez Pena JR, Ruiz Caravaca ML, Ruiz de Gopegui M, Sanz-Lopez R, Jorgensen TW, Tamames-Escobar S. 1998.** Fibrinolytic activity in laparoscopic cholecystectomy. *Journal of Laparoendoscopic Advanced Surgical Techniques* **8(6)**:417–423 DOI [10.1089/lap.1998.8.417](https://doi.org/10.1089/lap.1998.8.417).
- Milic DJ, Pejic VD, Zivic SS, Jovanovic SZ, Stanojkovic ZA, Jankovic RJ, Pecic VM, Nestorovic MD, Jankovic ID. 2007.** Coagulation status and presence of postoperative deep vein thrombosis in patients undergoing laparoscopic cholecystectomy. *Surgical Endoscopy* **21**:1588–1592 DOI [10.1007/s00464-006-9179-3](https://doi.org/10.1007/s00464-006-9179-3).
- Morino M, Giraudo G, Festa V. 1998.** Alterations in hepatic function during laparoscopic surgery. An experimental clinical study. *Surgical Endoscopy* **12(7)**:968–972 DOI [10.1007/s004649900758](https://doi.org/10.1007/s004649900758).
- Neudecker J, Sauerland S, Neugebauer E, Bergamaschi R, Bonjer HJ, Cuschieri A, Fuchs KH, Jacobi CH, Jansen FW, Koivusalo AM, Lacy A, McMahon MJ, Millat B, Schwenk W. 2002.** The European association for endoscopic surgery clinical practice guideline on the pneumoperitoneum for laparoscopic surgery. *Surgical Endoscopy* **16(7)**:1121–1143 DOI [10.1007/s00464-001-9166-7](https://doi.org/10.1007/s00464-001-9166-7).
- Ntourakis D, Sergentanis TN, Georgiopoulos I, Papadopoulou E, Liasis L, Kritikos E, Tzardis P, Laopodis V. 2011.** Subclinical activation of coagulation and fibrinolysis in laparoscopic cholecystectomy: do risk factors exist? *International Journal of Surgery* **9(5)**:374–377 DOI [10.1016/j.ijssu.2011.02.011](https://doi.org/10.1016/j.ijssu.2011.02.011).

- Okuda Y, Kitajima T, Egawa H, Hamaguchi S, Yamaguchi S, Yamazaki H, Ido K. 2002.** A combination of heparin and intermittent pneumatic compression device may be more effective to prevent deep vein thrombosis in the lower extremities after laparoscopic cholecystectomy. *Surgical Endoscopy* **16**:781–784 DOI [10.1007/s00464-001-8191-x](https://doi.org/10.1007/s00464-001-8191-x).
- Prone N, Bounameaux H, Perrier A. 2001.** Comparison of four strategies for diagnosing deep vein thrombosis: a cost-effectiveness analysis. *The American Journal of Medicine* **110**:33–40 DOI [10.1016/S0002-9343\(00\)00598-2](https://doi.org/10.1016/S0002-9343(00)00598-2).
- Suter M, Meyer A. 2001.** A 10-year experience with the use of laparoscopic cholecystectomy for acute cholecystitis: is it safe? *Surgical Endoscopy* **15**(10):1187–1192 DOI [10.1007/s004640090098](https://doi.org/10.1007/s004640090098).
- Takroui MS. 1999.** Anesthesia for laparoscopic general surgery. A special review. *Middle East Journal of Anesthesiology* **15**(1):36–62.
- Tan M, Xu FF, Peng JS, Li DM, Chen LH, Lv BJ, Zhao ZX, Huang C, Zheng CX. 2003.** Changes in the level of serum liver enzymes after laparoscopic surgery. *World Journal of Gastroenterology* **9**(2):364–367 DOI [10.3748/wjg.v9.i2.364](https://doi.org/10.3748/wjg.v9.i2.364).
- Vander Velpen G, Penninckx F, Kerremans R, Van Damme J, Arnout J. 1994.** Interleukin-6 and coagulations-fibrinolysis fluctuations after laparoscopic and conventional cholecystectomy. *Surgical Endoscopy* **8**(10):1216–1220 DOI [10.1007/BF00591054](https://doi.org/10.1007/BF00591054).
- Vecchio R, Cacciola E, Martino M, Cacciola RR, MacFadyen BV. 2003.** Modifications of coagulation and fibrinolytic parameters in laparoscopic cholecystectomy. *Surgical Endoscopy* **17**(3):428–433 DOI [10.1007/s00464-001-8291-7](https://doi.org/10.1007/s00464-001-8291-7).
- Volz J, Köster S, Spacek Z, Pawaletz N. 1999.** Characteristic alterations of the peritoneum after carbon dioxide pneumoperitoneum. *Surgical Endoscopy* **13**(6):611–614 DOI [10.1007/s004649901052](https://doi.org/10.1007/s004649901052).
- Windberger UB, Auer R, Keplinger F, Langle F, Heinze G, Schindl M, Losert UM. 1999.** The role of intraabdominal-pressure on splanchnic and pulmonary hemodynamic and metabolic changes during carbon dioxide pneumoperitoneum. *Gastrointestinal Endoscopy* **49**(1):84–91 DOI [10.1016/S0016-5107\(99\)70450-5](https://doi.org/10.1016/S0016-5107(99)70450-5).