

Supplementary Figures

(A)

	A	B	C	D	E	F	G	H	I	J	K	L	M	N
1	POS	POS	NEG	NEG	4-1BB	ACE-2	Acrp30	Adipsin	AgRP	Ang-2	Angiopoietin-1	ANGPTL4	CRP	ENA-78
2	POS	POS	NEG	NEG	4-1BB	ACE-2	Acrp30	Adipsin	AgRP	Ang-2	Angiopoietin-1	ANGPTL4	CRP	ENA-78
3	Fas	FGF-6	Growth Hormone	HCC-4	IFN- γ	IGFBP-1	IGFBP-2	IGFBP-3	IGF-I	IGF-I SR	IL-1 R4/ST2	IL-1 sRI	IL-10	IL-11
4	Fas	FGF-6	Growth Hormone	HCC-4	IFN- γ	IGFBP-1	IGFBP-2	IGFBP-3	IGF-I	IGF-I SR	IL-1 R4/ST2	IL-1 sRI	IL-10	IL-11
5	IL-12	IL-1 α	IL-1 β	IL-6	IL-6 sR	IL-8	Insulin	IP-10	Leptin R	Leptin	LIF	Lymphotoctin	MCP-1	MCP-3
6	IL-12	IL-1 α	IL-1 β	IL-6	IL-6 sR	IL-8	Insulin	IP-10	Leptin R	Leptin	LIF	Lymphotoctin	MCP-1	MCP-3
7	MCSF	MIF	MIP-1 β	MSP α	OPG	OSM	PAI-1	PARC	PDGF-AA	PDGF-AB	PDGF-BB	RANTES	Resistin	Serum Amyloid A
8	MCSF	MIF	MIP-1 β	MSP α	OPG	OSM	PAI-1	PARC	PDGF-AA	PDGF-AB	PDGF-BB	RANTES	Resistin	Serum Amyloid A
9	SDF-1	sTNF RII	sTNT RI	TECK	TGF- β	TIMP-1	TIMP-2	TNF- α	VEGF	XEDAR	BLANK	BLANK	BLANK	POS
10	SDF-1	sTNF RII	sTNT RI	TECK	TGF- β	TIMP-1	TIMP-2	TNF- α	VEGF	XEDAR	BLANK	BLANK	BLANK	POS

POS: Positive control, NEG: Negative control, BLANK: No antibody

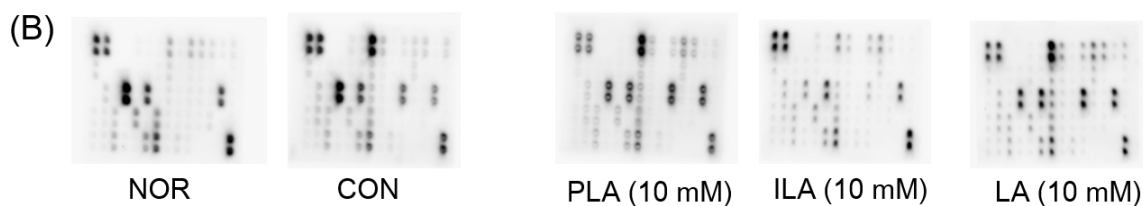


Fig. S1. Human obesity antibody array identification of the effect of PLA, ILA, and LA in cells. (A) Array map used in the panel, **(B)** human antibody array panel used in this study. The signal intensity of the arrays in the panel was analyzed using a densitometer. The relative fold change of individual proteins was calculated after normalization to the positive control of each array (n = 2).

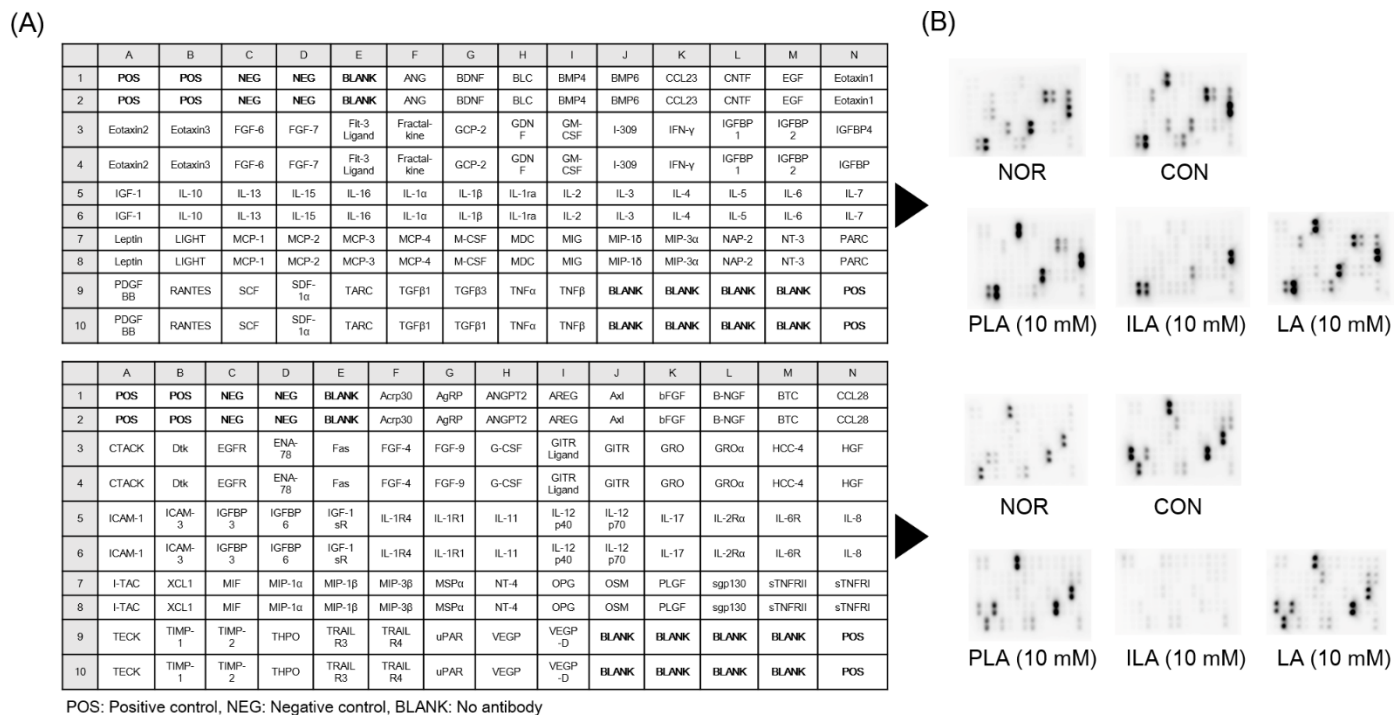


Fig. S2. Human cytokine antibody array identification of the effect of PLA, ILA, and LA in cells. (A) Array map used in the panel, (B) human antibody array panel used in this study. The signal intensity of the arrays in the panel was analyzed using a densitometer. The relative fold change of individual proteins was calculated after normalization to the positive control of each array ($n = 2$).