



Low syndrome: a single center's experience in Korea

Hyun-Kyung Kim, MD¹, Ja Hye Kim, MD¹, Yoo-Mi Kim, MD¹, Gu-Hwan Kim, PhD², Beom Hee Lee, MD, PhD^{1,2}, Jin-Ho Choi, MD, PhD¹, Han-Wook Yoo, MD, PhD^{1,2}

¹Department of Pediatrics, ²Medical Genetics Center, Asan Medical Center Children's Hospital, University of Ulsan College of Medicine, Seoul, Korea

Purpose: Low syndrome is a rare, X-linked recessive disorder caused by mutations in the *OCRL* gene. It involves multiple anatomic systems, particularly the eyes, central nervous system, and kidneys, and leads to profound growth failure and global developmental delay. This study evaluated the clinical and genetic characteristics of Korean patients with Low syndrome.

Methods: The clinical findings and results of genetic studies were reviewed for 12 male patients diagnosed with Low syndrome at a single medical institution.

Results: The mean age of the patients at presentation was 2.2 months (range, 0–4 months), although the diagnosis was delayed by a mean of 2.8 years (range, 0–9.7 years). The mean follow-up period was 9.0 years (range, 0.6–16.7 years). Nine mutations in *OCRL* were identified in 11 patients (92%), with three novel mutations. The main presentation was congenital cataract in both eyes necessitating early cataract removal in the 11 patients with impaired visual acuity. Profound short stature and developmental delay were observed in all patients, and seizures occurred in 50% of the patients. All patients suffered from proximal renal tubular dysfunction, and one patient developed chronic renal failure. Other manifestations included pathologic fracture (50%), cutaneous cysts (42%), and cryptorchidism (42%). However, there was no bleeding tendency, and none of the patients died during the study period.

Conclusion: This study describes the clinical and genetic characteristics of Korean patients with Low syndrome. The observations are helpful for understanding the natural courses of Low syndrome and for appropriate genetic counseling.

Key words: Oculocerebrorenal syndrome, Cataract, Developmental disabilities, Acidosis, Renal tubular

Corresponding author: Han-Wook Yoo, MD, PhD
Division of Pediatric Endocrinology and Metabolism, Department of Pediatrics, Asan Medical Center Children's Hospital, University of Ulsan College of Medicine, 88 Olympic-ro 43-gil, Songpa-gu, Seoul 138-736, Korea
Tel: +82-2-3010-3388
Fax: +82-2-473-3725
E-mail: hwyo@amc.seoul.kr

Received: 1 September, 2013

Revised: 13 October, 2013

Accepted: 16 October, 2013

Introduction

Low syndrome (OculoCerebroRenal syndrome of Lowe) is an X-linked, recessive disorder characterized by congenital cataracts, mental retardation, and proximal renal tubular dysfunction (Fanconi syndrome)¹. It is a rare disease with an estimated prevalence of 1–2 in 1,000,000 patients².

The clinical manifestations vary among affected individuals and also according to their age. Bilateral cataracts are present at birth and are associated with glaucoma in approximately half of the affected males, often resulting in progressive visual loss¹. Global hypotonia is also noted soon after birth, and many patients exhibit mental retardation, stereotypic behavior, and seizure disorder³. During infancy and midchildhood, affected males have a variable spectrum of renal tubular dysfunction which causes aminoaciduria, metabolic acidosis, phosphaturia, and hypercalciuria. Later in life, some patients develop chronic renal insufficiency and end-stage renal disease between the second and fourth decades⁴. Renal rickets and osteomalacia due to renal dysfunction may lead to fractures, bone pain,

Copyright © 2014 by The Korean Pediatric Society

This is an open-access article distributed under the terms of the Creative Commons Attribution Non-Commercial License (<http://creativecommons.org/licenses/by-nc/3.0/>) which permits unrestricted non-commercial use, distribution, and reproduction in any medium, provided the original work is properly cited.

and limited range of motion. Other clinical manifestations include facial dysmorphisms (frontal bossing, deep-set eyes, and protruding ears), dental malformation, superficial cysts, and failure to thrive⁵⁻⁷.

This syndrome is caused by mutations in the *OCRL* gene on Xq25-q26, which contains 24 exons and encodes an inositol polyphosphate-5-phosphatase at the *trans* Golgi network as well as early endosomes^{8,9}. *OCRL* has an essential role in cellular processes such as intracellular signaling, protein trafficking, and polymerization of the cytoskeleton actin. Its defect causes the several cellular defects underlying Lowe syndrome. Since 1952, when this disease was first recognized by Lowe et al.¹⁰, clinical and genetic studies have been reported in various populations. However, there have been a few studies in Korean patients and these reports only described the clinical characteristics of a few patients or mutations of the *OCRL* gene. In this study, we describe the detailed clinical features as well as the genetic characteristics in Korean patients with Lowe syndrome.

Materials and methods

1. Study patients

A total of 12, unrelated, male patients with Lowe syndrome were included in this study and had been referred from the Department of Pediatrics, Medical Genetics Center, Asan Medical Center Children's Hospital, Seoul, Korea, from December 1991 to April 2013. The demographic data, clinical manifestations, and the results of multidisciplinary studies, i.e., ophthalmologic, otolaryngologic, orthopedic, and urologic, were reviewed. Informed consent allowing genetic studies was obtained from all of the parents or guardians of all of the study patients.

The clinical diagnosis of Lowe syndrome was based on the presence of all three of the following: (1) congenital bilateral cataracts; (2) renal Fanconi syndrome; and (3) involvement of the central nervous system, such as hypotonia and mental retardation¹¹. Standard deviation scores (SDS) for height, weight, and body mass index (BMI) were calculated based on the data presented in the 2007 Korean Children and Adolescents Growth Standard¹¹.

2. Mutation analysis of the *OCRL* gene

Mutation analysis was carried out using genomic DNA from peripheral blood using a QuickGene DNA whole blood kit (Fuji-film, Tokyo, Japan). Twenty-three exons, including coding sequences of the *OCRL* gene and their intronic flanking sequences, were amplified by polymerase chain reaction (PCR) with 20 sets of primers. After PCR amplification with Go Taq polymerase (Promega, Madison, WI, USA), DNA sequencing was performed using the same primers as those in PCR and a BigDye Terminator

V3.1 Cycle Sequencing Ready Reaction kit (Applied Biosystems, Foster City, CA, USA).

Results

1. Clinical characteristics at diagnosis

The first presenting sign of Lowe syndrome in all 12 patients was bilateral congenital cataracts. The mean age at presentation was 2.2±1.8 months (0 to four months of age). However, clinical diagnosis of Lowe syndrome was delayed until 51.3±61.9 months of age (four months to 18 years of age). The interval from presentation to diagnosis was 34.1±34.8 months (0 to 116 months). At diagnosis, delayed development was seen in six patients (50%). In addition, proteinuria, nystagmus, seizure or sensorineuronal hearing loss were seen in the remaining six patients (Table 1).

2. Genetic analysis of the *OCRL* gene

A total of nine different *OCRL* mutations, including three novel mutations, were identified in 11 patients (91.7%), although we could not find a mutation in the remaining patient (subject 12) (Table 1). Point mutations were one missense (p.Arg483Gln in subjects 3 and 8) and three nonsense (p.Arg483* in subject 1, p.Arg793* in subjects 4 and 6, and p.Arg678* in subject 11). Two, splice site mutations, c.1551+1G>A and c.889-11G>A, were detected in subjects 5 and 7, respectively. The frameshift mutations, p.Leu723Trpfs*4 and p.Arg596fs*10, are expected to produce a prematurely terminated *OCRL* protein. c.2408_*5164inv refers to gross inversion of exons 21-23, which is also predicted to produce premature terminated protein. Three, novel mutations were c.2167_2174delTGGATGAA (p.Leu723Trpfs*4), c.1787_1788insGAAC (p.Arg596fs*10), and c.2408_*5164inv. The mutations were identified in exons 15 (three patients), 21 (three patients), and 17/18/19 (one patient each) in the order of frequency.

Maternal carrier status was evaluated in seven families and was positive in two mothers (subjects 5 and 9). A positive family history was noted in subject 2 whose elder brother showed bilateral congenital cataract and sensorineuronal hearing loss. The elder brother died of sepsis at 29 months of age.

3. Clinical course

All 12 patients survived during the follow-up period of 9.0±5.6 years (0.6 to 16.7 years).

4. Physical growth

All patients presented with profoundly short stature (Table 2). The mean height SDS were -3.8±3.1 (-11.3 to -0.1) at diagnosis and -4.1±3.1 (-4.8 to 1.4) at the last follow-up visit, respectively. The mean BMI SDS was -0.8±1.7 (-4.8 to 1.4) at the last evaluation.

Table 1. Clinical findings and mutations of the *OCRL* gene at diagnosis in the patients with Lowe syndrome

Subject no.	Gender	Age at presentation	Age at diagnosis	Presenting signs	Affected intron, exon	Mutation type	Nucleotide change	Amino acid change	Reference	Maternal status
1	M	3 mo	21 mo	Cataract, proteinuria	Exon 15	Nonsense	c.1447C>T	p.Arg483*	Monnier et al. ²¹⁾	ND
2	M	0	3 yr 6 mo	Cataract, nystagmus	Exon 19	Frameshift	c.2167_2174del TGGATGAA	p.Leu723Trpfs*4	This study	ND
3	M	4 mo	4 mo	Cataract, nystagmus	Exon 15	Missense	c.1448G>A	p.Arg483Gln	Kawano et al. ²³⁾	ND
4	M	4 mo	7 yr	Cataract, developmental delay	Exon 21	Nonsense	c.2377C>T	p.Arg793*	Monnier et al. ²¹⁾	Noncarrier
5	M	NA	18 yr	Cataract	Intron 15	Splice site	c.1551+1G>A	Aberrant splicing	Monnier et al. ²¹⁾	Carrier
6	M	4 mo	2 yr 8 mo	Cataract, developmental delay	Exon 21	Nonsense	c.2377C>T	p.Arg793*	Monnier et al. ²¹⁾	Noncarrier
7	M	4 mo	10 yr	Cataract, seizure	Intron 10	Splice site	c.889-11G>A	Aberrant splicing	Chou et al. ³²⁾	Noncarrier
8	M	1 mo	9 mo	Cataract, sensorineural hearing loss	Exon 15	Missense	c.1448G>A	p.Arg483Gln	Kawano et al. ²³⁾	Noncarrier
9	M	3 mo	8 mo	Cataract, developmental delay	Exon 21–23	Inversion	c.2408_*5164 inv	Gross inversion	This study	Carrier
10	M	0	2 yr 9 mo	Cataract, developmental delay	Exon 17	Insertion, frameshift	c.1787_1788insGAAC	p.Arg596fs*10	This study	ND
11	M	1 mo	2 yr	Cataract, developmental delay	Exon 18	Nonsense	c.2032C>T	p.Arg678*	Lin et al. ³³⁾	Noncarrier
12	M	0	22 mo	Cataract, developmental delay	Normal	-	-	-	-	ND

NA, data not available; ND, not done.

Table 2. Physical growth of the patients with Lowe syndrome

Subject no.	At diagnosis			At the last evaluation				Onset of puberty
	Age	Weight (kg)	Height (cm), mean (SDS)	Age	Weight (kg)	Height (cm), mean (SDS)	BMI (SDS)	
1	21 mo	8.1	71 (-4.0)	19 yr 1 mo	36.5	129* (-7.4)	0.1	15 yr 5 mo
2	3 yr 6 mo	10.0	86 (-3.2)	13 yr	25.0	130 (-3.4)	-2.0	NA
3	4 mo	NA	NA	16 yr 11 mo	57.0	147* (-2.7)	1.3	12 yr 1 mo
4	7 yr	12.1	94 (-5.7)	16 yr 6 mo	16.0	111 (-10.9)	-4.8	Not yet
5	18 yr	49.0	148 (-2.7)	24 yr 4 mo	56.3	149* (-2.4)	1.1	NA
6	2 yr 8 mo	9.5	80 (-3.1)	6 yr 1 mo	14.5	95 (-4.4)	0.1	Not yet
7	10 yr	20.0	113 (-4.0)	25 yr 6 mo	53.0	165* (0.8)	-1.0	NA
8	9 mo	7.3	71 (-0.1)	2 yr 4 mo	10.0	81 (-2.3)	-0.9	Not yet
9	8 mo	8.8	68 (-0.6)	14 yr	22.0	NA	NA	12 yr 7 mo
10	2 yr 9 mo	10.4	79 (-3.6)	3 yr 10 mo	12.0	89 (-2.6)	-0.6	Not yet
11	2 yr	3.4	57 (-11.3)	12 yr 10 mo	13.0	92 (-6.3)	-1.7	Not yet
12	22 mo	NA	NA	11 yr 3 mo	23.6	118 (-3.9)	-0.7	NA

SDS, standard deviation score; BMI, body mass index; NA, data not available.

*Final height.

There was marked delay in height and BMI in all cases at diagnosis and/or at the last follow-up visit. Linear growth velocities were below normal and short stature became evident by the age of one year in all 12 patients. The mean final height of four patients was 147.4±14.9 cm (128.7 to 165.0 cm), and the onset of puberty was delayed in two patients (subjects 1 and 4).

5. Ocular manifestations

Cataract removal surgery was performed in 11 patients at 3.6±1.6

months of age (one to seven months of age), and an intraocular lens was implanted in six (6/11, 55%) of these patients (Table 3). Nystagmus (9/12, 75%) and glaucoma (5/10, 50%) were also seen. Despite therapy, visual impairment worsened in all patients, and corneal keloid was found in three patients (3/10, 30%).

6. Neurological manifestations

All patients experienced neonatal hypotonia with motor and cognitive developmental delay as well as mental retardation

Table 3. Ocular characteristics of the patients with Lowe syndrome

Subject no.	Age at the last evaluation	Bilateral congenital cataract	Cataract operation timing	Lens	Nystagmus	Glaucoma	Impaired vision	Others
1	17 yr 11 mo	+	3 mo	Pseudophakia	+	-	+	Enophthalmos, esotropia
2	8 yr	+	3 mo	Aphakia	+	+	+	None
3	NA	+	5 mo	Pseudophakia	+	+	+	None
4	16 yr	+	4 mo	Pseudophakia	-	+	+	Corneal keloid
5	NA	+	NA	Aphakia	-	-	+	None
6	5 yr 5 mo	+	4 mo	Pseudophakia	-	-	+	Corneal keloid
7	23 yr 1 mo	+	4 mo	Aphakia	+	-	+	Corneal keloid, esotropia
8	1 yr 10 mo	+	3 mo	Pseudophakia	+	+	+	Enophthalmos, esotropia
9	13 yr 7 mo	+	7 mo	Pseudophakia	+	+	+	None
10	3 yr 4 mo	+	1 mo	Aphakia	+	-	+	Esotropia
11	NA	+	NA	NA	+	NA	NA	NA
12	8 y 10 mo	+	2 mo	NA	+	NA	+	NA

NA, data not available.

Table 4. Neurological characteristics of the patients with Lowe syndrome

Subject no.	Age at the last evaluation	Neonatal hypotonia	Developmental delay	Mental retardation	Seizure	Other manifestations	EEG	Brain MRI
1	18 yr 5 mo	+	+	+	+	Areflexia	Partial seizure	Multiple high signal intensity in both frontal white matter and right basal ganglia on T2-weighted imaging
2	12 yr 2 mo	+	+	+	+	Pervasive developmental disorder, hand flapping	ND	High signal intensity in bilateral peritrigonal white matter on T2-weighted imaging
3	16 yr 5 mo	+	+	+	-	None	Partial seizure	ND
4	16 yr	+	+	+	-	None	ND	ND
5	23 yr 9 mo	+	+	+	+	None	ND	ND
6	5 yr 5 mo	+	+	+	-	None	ND	Low signal intensity in the splenium portion of the corpus callosum on T1-weighted imaging
7	24 yr 11 mo	+	+	+	+	Autism, hand flapping	Partial seizure	Multiple, high-signal intensity in both periventricular and subcortical white matter on T2-weighted imaging
8	1 yr 11 mo	+	+	+	-	Areflexia	ND	R/O cortical atrophy
9	13 yr 6 mo	+	+	+	+	Areflexia	Generalized seizure	Mild high-signal intensity in bilateral peritrigonal white matter on T2-weighted imaging
10	3 yr 4 mo	+	+	+	-	Areflexia	ND	ND
11	12 yr 6 mo	+	+	+	-	None	ND	ND
12	11 yr 3 mo	+	+	+	+	None	Generalized seizure	High signal intensity in bilateral peritrigonal white matter, optic tract* on T2-weighted imaging

EEG, electroencephalography; MRI, magnetic resonance imaging; ND, not done; R/O, rule out.

(Table 4). Six patients (50%) had clinical or electrical seizure disorders for which antiepileptic medication was needed. Brain magnetic resonance imaging was performed in seven patients. Patchy, white matter abnormalities were detected which were hyperintense on T2-weighted imaging (5/7, 71%), and those lesions were located in bilateral peritrigonal white matter in three patients (3/7, 43%; Fig. 1).

7. Renal manifestations

Five patients whose urinary β_2 -microglobulin had been measured had albuminuria including low-molecular weight proteinuria (Table 5). In addition, proximal renal tubular acidosis or Fanconi syndrome was documented in all patients. Their estimated glomerular filtration rate (eGFR) was 82 ± 24 mL/min/1.73m² (47 to 144 mL/min/1.73m²), whereas one of these patients (subject 4) had renal insufficiency of eGFR 47 mL/min/1.73m² at the age of

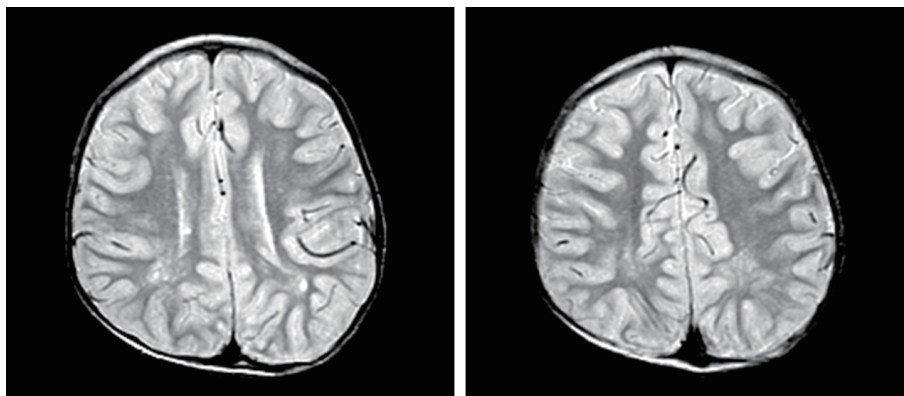


Fig. 1. Axial brain magnetic resonance images of subject 12 at 4 years of age, showing white matter and the optic tract with high signal intensity on T2-weighted images.

Table 5. Renal characteristics of the patients with Lowe syndrome

Subject no.	Age at the last evaluation	LMWP	Albuminuria	TRP (%)	U _{Ca/Cr} (mg/mg)	Kidney ultrasonography	Renal rickets	pRTA/FS	eGFR (mL/min/1.73m ²)	Medication
1	18 y 5 m	ND	+	55	1.01	Normal	+	+	84*	Na citrate+citric acid, K, P, calcitriol
2	12 y 2 m	+	+	59	0.85	Medullary nephrocarcinosis	+	+	83	Na citrate+citric acid, calcitriol, pamidronate
3	16 y 5 m	ND	+	ND	ND	Medullary nephrocarcinosis	+	+	88	Na citrate+citric acid, calcitriol
4	16 y	+	+	ND	0.68	Medullary nephrocarcinosis	+	+	47	Na citrate+citric acid, K, P, calcitriol
5	23 y 9 m	ND	+	ND	ND	Medullary nephrocarcinosis	+	+	64*	Na citrate+citric acid, P, calcitriol
6	5 y 5 m	ND	+	ND	1.49	Increased cortical echogenicity, bilateral	+	+	68	Na citrate+citric acid, calcitriol
7	24 y 11 m	ND	+	66	0.71	ND	+	+	82*	K, P, calcitriol
8	1 y 11 m	+	+	77	0.99	Normal	-	+	72	Calcitriol
9	13 y 6 m	ND	+	57	1.19	Medullary nephrocalcinosis	+	+	107	Na citrate+citric acid, K, P, calcitriol, pamidronate
10	3 y 4 m	+	+	ND	0.72	Normal	-	+	144	Na bicarbonate, calcitriol
11	12 y 6 m	ND	+	ND	ND	Medullary nephrocalcinosis	-	+	68	Na citrate+citric acid, calcitriol
12	11 y 3 m	+	+	69	0.61	Medullary nephrocalcinosis	-	+	77	Calcitriol

LMWP, low molecular weight proteinuria; TRP, renal tubular reabsorption of phosphate; U_{Ca/Cr}; urinary calcium/creatinine ratio; pRTA, proximal renal tubular acidosis; FS, Fanconi syndrome; eGFR, estimated glomerular filtration rate (using the Schwartz formula in patients under 18 years of age; and modification of diet in renal disease in patients [shown in *] over 18 years of age); ND, not done.

16 years^{12,13}.

Hypercalciuria (9/12, 75%), phosphaturia (6/12, 50%), renal rickets (9/12, 75%), hypokalemia (4/12, 33%), and nephrocalcinosis (7/12, 58%) were noted (Fig. 2). Sodium bicarbonate, citric acid, potassium, and phosphate replacement were required for metabolic and/or electrolyte disturbances, and calcitriol was given for renal rickets.

8. Skeletal, integumental, and other manifestations

Six patients (50%) experienced repeated pathologic bone fractures (Table 6). Pamidronate therapy was required for two patients (2/12, 17%) with severe osteoporosis seen on bone densitometry.

Cutaneous cysts on the buttock or back were noted in five patients (5/12, 42%), and cryptorchidism was detected in five

patients (5/12, 42%).

An increased bleeding tendency was not observed during daily activities or at the time of surgery in any patient. Platelet counts, prothrombin time, and activated partial thromboplastin time were also normal in all cases.

Discussion

Twelve patients in our study manifested the constellation of clinical features of Lowe syndrome. Bilateral congenital cataract is the earliest sign and requires surgery during infancy, although visual impairment can be reaggravated. Hypotonia, developmental delay, profoundly short stature, proximal renal tubular dysfunc-

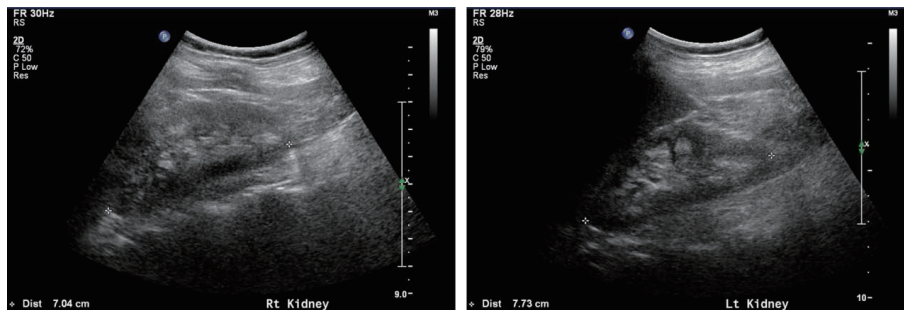


Fig. 2. Kidney ultrasonographic images of subject 2 at 10 years of age, showing echogenic medullae consistent with medullary nephrocarcinosis in both kidneys.

Table 6. Skeletal, integumental, and other characteristics of the patients with Lowe syndrome

Subject no.	Age at the last evaluation	Both SNHL	No. of fracture episode*	Cutaneous cyst	Undescended testis	Others
1	18 yr 5 mo	–	1	+	+	Scaphoid head, prominent ears, umbilical hernia
2	12 yr 2 mo	+	2	NA	+	None
3	16 yr 5 mo	–	1	+	–	None
4	16 yr	–	1	–	+	None
5	23 yr 9 mo	–	0	+	–	Malalignment of teeth
6	5 yr 5 mo	–	0	–	–	None
7	24 yr 11 mo	–	0	+	–	Scaphoid head
8	1 yr 11 mo	+	0	+	+	None
9	13 yr 6 mo	–	2	–	+	Congenital heart anomaly (ASD, VSD)
10	3 yr 4 mo	–	0	–	–	None
11	12 yr 6 mo	–	1	–	–	Scoliosis, steatorrhea (R/O pancreatic insufficiency)
12	11 yr 3 mo	–	0	–	–	Prominent ears

SNHL, sensorineural hearing loss; NA, data not available; ASD, atrial septal defect; VSD, ventricular septal defect; R/O, rule out.

*None, 0; <5 times, 1; ≥5 times, 2.

tion or Fanconi syndrome and its complications such as renal rickets and nephrocalcinosis, were invariably seen in most of our study patients. However, only one patient had renal insufficiency. The small proportion of renal insufficiency in our patients is related to the short duration of the follow-up period as in Lowe syndrome chronic renal failure usually develops between the second and fourth decades of life^{14,15}. However, its progression can occur even in early childhood, depending on tubular and glomerular dysfunction, as seen in nephropathic cystinosis. Recurrent pathologic bone fracture (50%), cutaneous cysts (42%), and cryptochidism (42%) were often observed in our patients. None of our patients had a bleeding tendency, in contrast to that seen in previously published reports¹⁶. All of our patients survived during the study period, although the survival rate remains to be re-estimated as the average life expectancy of patients with Lowe syndrome is approximately 40 years¹.

More than 200 different mutations in *OCRL* have been identified since the gene was discovered by Bailey Jr et al.¹⁷ in 1992. In our study, *OCRL* mutations were detected in 92% (11/12 alleles) of the patients, and which comparable to that seen in previous

studies^{2,4,16,18–23}. Meanwhile, the most mutations, including non-sense, splice-site and frameshift mutations, are expected to produce prematurely truncated protein (10/11 alleles, 90.9%). This proportion of the truncating mutation is higher than that (63.6%) reported by Hichri et al.². According to previous studies, the most frequent mutation site was exon 15 and the mutations were distributed in coding regions from exon 8 to exon 24, not in the first seven exons. In the present study, *OCRL* mutations were found in exon 15, 21, and 17/18/19, in order of frequency. The findings related to mutation sites are quite a contrast to those found in Dent-2 disease which was exclusively identified in the first seven exons of the *OCRL* gene and selectively shows renal proximal tubular dysfunction. It is known that the exons 1–7 of the coding region include the Pleckstrin Homology (PH) domain encoded by exons 2–5. Although the PH domain has a role as a major clathrin binding site, this suggests that the PH domain is not critical for the development of Lowe syndrome⁹.

Meanwhile, three novel mutations were detected in our study. Two frameshift mutations, p.Leu723Trpfs*4 and p.Arg596fs*10, were identified in the ASH (ASPM, SPD-2, Hydin)/Rab binding

domain spanning exons 17–19. The third novel mutation, c.2408_*5164inv, was gross inversion of exons 21–23 which mapped to a region in close interaction with the ASH domain. The ASH–RhoGAP (Rho GTPase activating) module regulates the majority of the protein-protein interactions for *OCRL* and has an important role in membrane recruitment⁹. Therefore, the frame-shift or gross inversion mutations in this module that affect its interactions with binding partners, impair cellular localization and the stability of *OCRL* and are sufficient to cause disease.

All patients with Lowe syndrome present in infancy with congenital cataract. However, the clinical diagnosis is established about two or three years later in most patients. Congenital bilateral cataract, neonatal hypotonia, and/or delayed development accompany other congenital syndromes due to chromosomal anomalies or prenatal infections¹. In addition, the characteristic facial appearance and renal tubulopathy might not be obvious in the infantile or early childhood periods. Therefore, it is important to include Lowe syndrome in the differential diagnosis of a male infant with congenital cataract and hypotonia. When it is suspected, tubular proteinuria and elevation of aspartate transaminase, lactate dehydrogenase or creatine kinase are useful markers¹⁴. For confirmation of Lowe syndrome, the activities of the inositol polyphosphate-5-phosphatase can be measured in skin fibroblasts or genetic testing can be performed for the *OCRL* gene²⁴. As for prenatal identification of Lowe syndrome, increased fetal nuchal translucency and the presence of bilateral lenticular opacities during the second trimester, as identified by detailed anomaly, are the important signs suggesting Lowe syndrome^{25,26}. In these cases or in an informed family, prenatal testing can be performed by enzyme deficiency analysis and/or DNA analysis in fetal cells obtained by either chorionic villus sampling or by amniocentesis²⁷. We could not obtain the information regarding prenatal ultrasonography in all of our patients. Meanwhile, in one case, the patient's mother planned another pregnancy and chorionic villus sampling was performed at 11 weeks and two days of gestation for antenatal exclusion of Lowe syndrome after the parent's prenatal consent (subject 11). As the mutational analysis showed that the fetus had a normal sequence of the *OCRL* gene, the parents decided to deliver the baby.

Profound short stature and delayed puberty were both evident in our patients. Chronic renal failure and metabolic acidosis along with renal rickets are supposed to contribute to a patient's short stature and delayed puberty. Growth impairment is also a common feature in children with Fanconi syndrome²⁸. In this respect, early identification and intervention for metabolic acidosis and renal rickets are important so as to deter growth impairment in children with Lowe syndrome. However, despite this aggressive therapy begun at an early age, growth retardation is inevitable in Lowe syndrome. However, there might be other elusive factors underlying the growth impairment.

Although most of the clinical features of Korean Lowe syndrome patients did not differ from those reported in other countries, there are some differences in our study. According to Lasne et al.¹⁶, an abnormal rate of hemorrhagic events was found according to a retrospective clinical survey and prolonged closure times (CTs) were observed in the Platelet Function Analyzer-100 system, despite normal coagulation tests in six patients with Lowe syndrome. Our patients had the normal ranges of platelet counts, prothrombin time, and activated partial thromboplastin time, and no severe bleeding episode was experienced during their daily life activities or surgeries through the variable follow-up periods. As they may often need multiple surgeries, such as scoliosis reduction, hip surgery or eye surgery, bleeding diathesis should be thoroughly evaluated.

Despite the extensive studies, it remains elusive how the *OCRL* gene mutations result in a variety of phenotypes of Lowe syndrome. As in our patients, most mutations are private. Sometimes clinical spectrum differs among patients with the same mutation (subjects 3 and 8 in Table 1). The underlying molecular mechanisms of these phenotypic heterogeneities are mainly elusive, although INPP5B, type II 5-phosphatase with an *OCRL* homolog with approximately 45% sequence homology and a similar structure, might have a role²⁹. In the study of Bothwell et al.³⁰, the *OCRL* knockout mice did not present phenotypes similar to those seen in Lowe syndrome, and the *OCRL*:INPP5B double knockout resulted in embryonic lethality, and leading to the hypothesis that INPP5B may compensate for *OCRL* in the mouse model. INPP5B shares a great portion of the interacting proteins with *OCRL*, except for clathrin and the endocytic clathrin adaptor AP-2⁹. Differential expression of INPP5B in the relevant tissues may be related to the severity of the *OCRL* loss of the function phenotype. Therefore, further investigation regarding the compensatory role of INPP5B for *OCRL* in Lowe syndrome, will be needed and it will be helpful for developing potentially successful treatment of Lowe syndrome.

Although we comprehensively reviewed the clinical and genetic findings of Korean patients with Lowe syndrome, our study has some limitations. First, the number of patients we reported in this study was too small to represent the general clinical and genetic features of Korean patients with Lowe syndrome and their genotype-phenotype correlations. In addition, the follow-up period was too short and variable among patients in order to assess the long-term natural course of Lowe syndrome in each patient. Because there is not a standardized, follow-up monitoring protocol, the clinical evaluation might have been incomplete in some patients.

Until now, a few studies have been reported on Korean Lowe syndrome. Kim et al.³¹ provided a description of the clinical characteristics in two patients and other studies have focused on renal or integumental systems^{6,18}. Meanwhile, our study first investigated the clinical features and genetic backgrounds of

Korean patients with Lowe syndrome, as well as their heterogeneities. Long-term follow-up evaluations in a large number of patients will be needed in order to further investigate the clinical and genetic spectrum of Lowe syndrome in Korean patients.

Conflict of interest

No potential conflict of interest relevant to this article was reported.

Acknowledgments

We thank the patients and their families for participating in this study which was supported by a grant from the National Research Foundation of Korea funded by the Ministry of Education, Science and Technology (Grant No. 2011-0019674).

References

- Loi M. Lowe syndrome. *Orphanet J Rare Dis* 2006;1:16.
- Hichri H, Rendu J, Monnier N, Coutton C, Dorseuil O, Poussou RV, et al. From Lowe syndrome to Dent disease: correlations between mutations of the OCRL1 gene and clinical and biochemical phenotypes. *Hum Mutat* 2011;32:379-88.
- Erdogan F, Ismailogullari S, Soyuer I, Ferahbas A, Poyrazoglu H. Different seizure types and skin lesions in oculocerebrorenal syndrome of Lowe. *J Child Neurol* 2007;22:427-31.
- Bockenhauer D, Bokenkamp A, van't Hoff W, Levtchenko E, Kistvan Holthe JE, Tasic V, et al. Renal phenotype in Lowe syndrome: a selective proximal tubular dysfunction. *Clin J Am Soc Nephrol* 2008;3:1430-6.
- Rodrigues Santos MT, Watanabe MM, Manzano FS, Lopes CH, Masiero D. Oculocerebrorenal Lowe syndrome: a literature review and two case reports. *Spec Care Dentist* 2007;27:108-11.
- Won JH, Lee MJ, Park JS, Chung H, Kim JK, Shim JS. Multiple epidermal cysts in lowe syndrome. *Ann Dermatol* 2010;22:444-6.
- Maia ML, do Val ML, Genzani CP, Fernandes FA, de Andrade MC, Carvalhaes JT. Lowe syndrome: report of five cases. *J Bras Nefrol* 2010;32:216-22.
- Silver DN, Lewis RA, Nussbaum RL. Mapping the Lowe oculocerebrorenal syndrome to Xq24-q26 by use of restriction fragment length polymorphisms. *J Clin Invest* 1987;79:282-5.
- Pirruccello M, De Camilli P. Inositol 5-phosphatases: insights from the Lowe syndrome protein OCRL. *Trends Biochem Sci* 2012;37:134-43.
- Lowe CU, Terrey M, MacLachlan EA. Organic-aciduria, decreased renal ammonia production, hydrophthalmos, and mental retardation; a clinical entity. *AMA Am J Dis Child* 1952;83:164-84.
- Korea Centers for Disease Control and Prevention, Division of Chronic Disease Surveillance, Committee for the Development of Growth Standard for Korean Children and Adolescents; Korean Pediatric Society, Committee for School Health and Public Health Statistics. 2007 Korean children and adolescents growth standard (commentary for the development of 2007 growth chart). Cheongwon: Korea Centers for Disease Control and Prevention, Division of Chronic Disease Surveillance, 2007.
- Schwartz GJ, Feld LG, Langford DJ. A simple estimate of glomerular filtration rate in full-term infants during the first year of life. *J Pediatr* 1984;104:849-54.
- Schwartz GJ, Gauthier B. A simple estimate of glomerular filtration rate in adolescent boys. *J Pediatr* 1985;106:522-6.
- Charnas LR, Bernardini I, Rader D, Hoeg JM, Gahl WA. Clinical and laboratory findings in the oculocerebrorenal syndrome of Lowe, with special reference to growth and renal function. *N Engl J Med* 1991;324:1318-25.
- Tricot L, Yahiaoui Y, Teixeira L, Benabdallah L, Rothschild E, Juquel JP, et al. End-stage renal failure in Lowe syndrome. *Nephrol Dial Transplant* 2003;18:1923-5.
- Lasne D, Baujat G, Mirault T, Lunardi J, Grelac F, Egot M, et al. Bleeding disorders in Lowe syndrome patients: evidence for a link between OCRL mutations and primary haemostasis disorders. *Br J Haematol* 2010;150:685-8.
- Bailey LC Jr, Olivos IM, Leahey AM, Attree OF, Okabe I, Lewis RA, et al. Characterization of a candidate gene for OCRL [abstract]. *Am J Hum Genet* 1992;51(Suppl):A4.
- Cho HY, Lee BH, Choi HJ, Ha IS, Choi Y, Cheong HI. Renal manifestations of Dent disease and Lowe syndrome. *Pediatr Nephrol* 2008;23:243-9.
- Addis M, Loi M, Lepiani C, Cau M, Melis MA. OCRL mutation analysis in Italian patients with Lowe syndrome. *Hum Mutat* 2004;23:524-5.
- Satre V, Monnier N, Berthoin F, Ayuso C, Joannard A, Jouk PS, et al. Characterization of a germline mosaicism in families with Lowe syndrome, and identification of seven novel mutations in the OCRL1 gene. *Am J Hum Genet* 1999;65:68-76.
- Monnier N, Satre V, Lerouge E, Berthoin F, Lunardi J. OCRL1 mutation analysis in French Lowe syndrome patients: implications for molecular diagnosis strategy and genetic counseling. *Hum Mutat* 2000;16:157-65.
- Lin T, Orrison BM, Leahey AM, Suchy SF, Bernard DJ, Lewis RA, et al. Spectrum of mutations in the OCRL1 gene in the Lowe oculocerebrorenal syndrome. *Am J Hum Genet* 1997;60:1384-8.
- Kawano T, Indo Y, Nakazato H, Shimadzu M, Matsuda I. Oculocerebrorenal syndrome of Lowe: three mutations in the OCRL1 gene derived from three patients with different phenotypes. *Am J Med Genet* 1998;77:348-55.
- Lowe M. Structure and function of the Lowe syndrome protein OCRL1. *Traffic* 2005;6:711-9.
- Lin SY, Lee CN, Shih JC, Lin CH, Su YN. Two cases of Lowe syndrome presenting as increased fetal nuchal translucency. *J Perinat Med* 2011;39:483-5.
- Daskalakis G, Anastasakis E, Lyberopoulos E, Antsaklis A. Prenatal detection of congenital cataract in a fetus with Lowe syndrome. *J Obstet Gynaecol* 2010;30:409-10.
- Suchy SF, Lin T, Horwitz JA, O'Brien WE, Nussbaum RL. First report of prenatal biochemical diagnosis of Lowe syndrome. *Prenat Diagn* 1998;18:1117-21.
- Hsu SY, Tsai IJ, Tsau YK. Comparison of growth in primary Fanconi syndrome and proximal renal tubular acidosis. *Pediatr Nephrol* 2005;20:460-4.
- Jefferson AB, Majerus PW. Properties of type II inositol polyphosphate 5-phosphatase. *J Biol Chem* 1995;270:9370-7.
- Bothwell SP, Chan E, Bernardini IM, Kuo YM, Gahl WA, Nussbaum RL. Mouse model for Lowe syndrome/Dent Disease 2 renal tubulopathy. *J Am Soc Nephrol* 2011;22:443-8.
- Kim SW, Yu YS, Kim IO, Cheong HI, Hwang YS, Choi Y. Two

- cases of oculocerebrorenal syndrome of Lowe. *Korean J Pediatr* 1999;42:419-23.
32. Chou YY, Chao SC, Chiou YY, Lin SJ. Identification of OCRL1 mutations in two Taiwanese Lowe syndrome patients. *Acta Paediatr Taiwan* 2005;46:226-9.
33. Lin T, Orrison BM, Suchy SF, Lewis RA, Nussbaum RL. Mutations are not uniformly distributed throughout the OCRL1 gene in Lowe syndrome patients. *Mol Genet Metab* 1998;64:58-61.