



Comprehensive Visual Rating Scale on Magnetic Resonance Imaging: Application to Prodromal Alzheimer Disease

Jae Kyung Chung¹, Jae-Won Jang^{1,2}, and the Alzheimer's Disease Neuroimaging Initiative

¹Department of Neurology, Kangwon National University Hospital, Chuncheon, Korea

²Department of Neurology, Kangwon National University College of Medicine, Chuncheon, Korea

Corresponding Author:

Jae-Won Jang, MD, PhD

Department of Neurology, Kangwon National University Hospital, 156 Baengnyeong, Chuncheon 24289, Korea

E-mail: light26@kangwon.ac.kr

ORCID:

<https://orcid.org/0000-0003-3540-530X>

Received: January 17, 2021

Revised: February 25, 2021

Accepted: March 8, 2021

Background: A comprehensive visual rating scale (CVRS) using brain magnetic resonance imaging (MRI) was previously developed to evaluate structural changes in the brains of older patients. This study investigated the usefulness of the CVRS in predicting dementia with Alzheimer disease (AD) in patients with prodromal AD. **Methods:** We included 189 patients with prodromal AD with available data from the Alzheimer's Disease Neuroimaging Initiative study. We evaluated all patients using CVRS and assessed their progression to AD dementia over 3 years of longitudinal follow-up. Survival analysis was performed using the Cox proportional hazards model to analyze the hazard ratios of the CVRS for progression to AD dementia. **Results:** Among 189 patients with prodromal AD, 61 (32.3%) progressed to dementia. The mean baseline CVRS scores differed significantly between the stable and progressive groups (9.9 ± 5.1 vs. 12.4 ± 4.9 ; $p=0.002$). An initial high CVRS score was an independent risk factor for the progression to AD dementia (hazard ratio=1.110; 95% confidence interval, 1.043–1.182). **Conclusion:** The baseline CVRS score predicted the progression to dementia in patients with prodromal AD, indicating its independent association with longitudinal cognitive decline.

Key Words: Magnetic resonance imaging, Alzheimer disease, Cognitive dysfunction

INTRODUCTION

Alzheimer disease (AD) is the most common neurodegenerative disease that causes dementia. Mild cognitive impairment (MCI), a prodromal stage of dementia, is characterized by cognitive dysfunction without definite functional deficits. Prodromal AD is defined as MCI with positivity for an AD biomarker, such as amyloid deposition, on positron emission tomography (PET) imaging.¹⁾ In clinical practice, there is an increasing need for biomarkers to assess patients at high risk of progression to AD dementia among patients with prodromal AD.²⁾

Among the *in-vivo* visualization of cerebral structural changes, brain magnetic resonance imaging (MRI) is commonly used for the identification of AD and MCI.³⁾ The diagnostic criteria include cerebral atrophy in brain MRI as a neurodegenerative marker of

AD.^{4,5)} As MCI is usually associated with various pathologies,⁶⁾ the development of neuroimaging biomarkers to simultaneously reflect neurodegeneration and vascular injury is required.

A comprehensive visual rating scale (CVRS) using brain MRI was developed to assess structural changes occurring due to cerebral atrophy and vascular lesions.⁷⁾ The CVRS integrates preexisting visual rating scales such as cortical atrophy, hippocampal atrophy, ventricular enlargement, and small vessel disease.⁷⁾ The CVRS was previously validated for individuals with AD, MCI, and normal cognition. It was found to indicate structural changes in the brains of patients with AD and MCI and was significantly correlated with the results of neuropsychological tests.⁷⁾ In addition, this scale was used to predict disease progression and its relationship to cognitive decline in longitudinal follow-ups of subjects with MCI.⁸⁾ Consistent with previous studies, this longitudinal follow-up study

evaluated the usefulness of the CVRS in predicting the progression to AD dementia in patients with prodromal AD.

MATERIALS AND METHODS

Study population

We downloaded data for this study from the Alzheimer's Disease Neuroimaging Initiative (ADNI) database (<http://adni.loni.usc.edu/>). The principal investigator, Michael W. Weiner started the ADNI in 2003 as a public-private partnership. The primary aim of the ADNI is to determine whether the combination of serial biological markers and clinical and neuropsychological tests can be used to measure the progression of AD and MCI. The study procedures were approved by the Institutional Review Board of the Kangwon National University Hospital (No. KNUH-2020-04-015) and written informed consent was obtained from all participants or their authorized representatives. The detailed protocols regarding informed consent of the ADNI subjects and current information can be found on the ADNI webpage (<http://adni.loni.usc.edu/>).

We downloaded the data included in this study from the ADNI database on June 20, 2020. We included patients with prodromal AD who underwent a baseline MRI scan. The primary outcome was progression to AD dementia during a follow-up period of 36 months. This study finally included 189 patients with prodromal AD from the ADNI cohort.

MCI was diagnosed based on the presence of objective memory impairment without meeting the criteria for dementia. All subjects had a Mini-Mental State Examination (MMSE) score of ≥ 24 , a CDR memory score of ≥ 0.5 , a global Clinical Dementia Rating (CDR) score of 0.5, and a score for the delayed recall from Story A of the Wechsler Memory Scale-Revised of ≤ 2 (0–7 years of education), ≤ 4 (8–15 years of education) or ≤ 8 (≥ 16 years of education).⁹⁾ The diagnosis of dementia at follow-up was based on the presence of memory complaints, a global CDR score of ≥ 0.5 , and significant impairments in objective cognition and ADL.

MRI

All subjects underwent imaging studies using a 3-T MRI scanner (GE, Philips, or Siemens). Various ADNI sites collect data using a standardized MRI protocol to evaluate and compare three-dimensional T1-weighted sequences (<http://adni.loni.usc.edu/methods/documents/mri-protocols/>). MRI data were acquired and processed according to a standard protocol.¹⁰⁾ We downloaded preprocessed T1-weighted magnetization-prepared rapid gradient-echo (MP-RAGE) MR images, T2 star-weighted images, and fluid-attenuated inversion recovery images from the database.

CVRS

The CVRS includes the hippocampal atrophy, cortical atrophy, subcortical atrophy (ventricular enlargement), and small vessel disease scales, which summarize degenerative or vascular injury of the pathologic brain (Table 1).¹¹⁻¹⁶⁾ A previous study described the details of each scale.⁷⁾ The CVRS integrates validated scales to quantify the effects of various brain deficits, thus producing a scale score ranging from 0 to 30, with higher scores indicating more deficits.

Neurologists (JKC) who were blinded to the clinical and demographic information performed the visual rating using a template.

Pathologic changes in AD

The presence of amyloid by positron emission tomography (PET) was used to confirm the pathologic changes in AD. The mean standard uptake value ratio (SUVR) of 18F-AV-45 PET was determined for each subject. An SUVR threshold of ≥ 1.10 was used to define amyloid positive ($A\beta+$) status according to the ADNI study using the composite volume of interest (VOI) SUVR with the highest accuracy for discriminating between patients with AD and cognitively normal subjects.¹⁷⁾

Neuropsychological tests

Neuropsychological tests such as the MMSE, CDR-sum of boxes (CDR-SOB), and Alzheimer's Disease Assessment Scale-cognitive subscale (ADAS-cog)¹⁸⁾ were performed at baseline and annual

Table 1. Composition of the comprehensive visual rating scale

	Adopted or modified scales	Scale range
Hippocampal atrophy	Scheltens' scale for coronal image ¹¹⁾ Kim and Jung's scale for the Axial image ¹²⁾	0–8 (bilaterally)
Cortical atrophy	Victoroff's scale for frontal and temporal lobe ¹³⁾ Koedam's scale for parietal lobe ¹⁴⁾	0–9
Subcortical atrophy	Donovan's scale for the anterior and posterior horn of the lateral ventricle ¹⁵⁾	0–6
Small vessel disease	Modified Fazekas and Scheltens' scale for white matter hyperintensity ¹⁶⁾ Lacunes and microbleeds: the total number was graded	0–3 0–4

follow-ups over 3 years.

Statistical analysis

We used independent t-test and chi-square test for continuous and categorical variables, respectively, to analyze group differences. We evaluated the hazard ratios (HRs) of baseline demographics, neuropsychological tests, and CVRS using univariate Cox regression analysis using follow-up time by yearly intervals as the time variable and progression to AD dementia as the status variable. To determine whether the CVRS was significantly associated with progression to AD dementia, we used Kaplan-Meier plots based on “high” and “low” CVRS according to the maximally selected rank statistics.¹⁹⁾ We applied multivariate Cox analysis to confirm the independent determinants of AD dementia progression with relevant covariates. The retention threshold was $p < 0.2$ in univariate Cox regression and also included clinically important variables. The MMSE and ADAS-cog scores were highly correlated and were divided into Models 1 and 2.

Statistical significance was defined as $p < 0.05$. Statistical analyses were performed using R version 4.0.2 (The R Foundation for Statistical Computing, 64-bit platform). Cox regression analysis was performed using the survival package,²⁰⁾ while the optimal cutoff points of continuous variables in the “survival” analysis were determined using the “maxstat” package.¹⁹⁾ Graphics were created using the “ggplot2” package.²¹⁾

RESULTS

This study included 189 patients with prodromal AD. Their mean age was 72.6 years and 86 (45.5%) were female. A total of 122 pa-

tients (64.5%) had at least one *APOE* $\epsilon 4$ allele. We observed that 61 patients (32.3%) progressed to dementia, while 128 patients did not, during a follow-up period of 36 months. The baseline characteristics based on the progression to dementia, categorized as stable or progressive prodromal AD, are presented in Table 2. Patients with prodromal AD that progressed to dementia had poorer cognitive performance and CVRS scores at baseline.

Subjects with higher CVRS scores (> 16 points) had a significantly higher HR for progression to AD dementia in the univariate Cox regression analysis (HR = 1.089; 95% confidence interval [CI], 1.034–1.146) (Fig. 1, Table 3). The rate of progression to AD dementia was significantly higher in *APOE* $\epsilon 4$ carriers. Poor baseline cognitive tests, as indicated by MMSE, CDR-SOB, and ADAS-cog subscale 11 (ADAS-cog 11) scores, were significantly associated with progression to AD dementia.

Multivariate Cox analysis included clinical (age, sex, level of education) and statistically relevant variables (*APOE* $\epsilon 4$ allele, MMSE, ADAS-cog 11, CDR-SOB, and CVRS) (Table 3). Owing to the high correlation between the ADAS-cog and MMSE scores, we analyzed them as Models 1 and 2, respectively. The adjusted covariates did not change the significance of the HRs of CVRS (HR = 1.110; 95% CI, 1.043–1.182 for Model 1 and HR = 1.084; 95% CI, 1.014–1.159 for Model 2). However, we did not observe significant relationships between baseline MMSE, *APOE* $\epsilon 4$, and AD dementia progression after adjusting for other covariates. We examined the receiver operating characteristic curve and area under the curve (AUC) to determine the utility of the CVRS for the prediction of prodromal AD compared to each subscale (Table 4). The AUC of the CVRS was higher than that of the other subscales.

Table 2. Baseline characteristics of patients with prodromal Alzheimer disease

	Stable group (n = 128)	Progressive group (n = 61)	Total (n = 189)	p-value
Age (y)	72.6 ± 6.5	72.5 ± 7.0	72.6 ± 6.7	0.933
Sex, female	57 (44.5)	29 (47.5)	86 (45.5)	0.816
Education (y)	16.3 ± 2.8	16.5 ± 2.6	16.3 ± 2.7	0.650
<i>APOE</i> $\epsilon 4$ carriers	77 (60.2)	45 (73.7)	122 (64.5)	0.179
CDR-SOB	1.3 ± 0.8	2.2 ± 1.0	1.6 ± 1.0	< 0.001
ADAS-cog 11	8.6 ± 3.6	13.1 ± 4.8	10.1 ± 4.5	< 0.001
MMSE	28.0 ± 1.7	27.4 ± 1.9	27.8 ± 1.8	0.028
CVRS (total)	9.9 ± 5.1	12.4 ± 4.9	10.7 ± 5.1	0.002
Hippocampal atrophy	2.9 ± 2.0	3.9 ± 1.8	3.2 ± 2.0	0.001
Cortical atrophy	3.6 ± 2.2	4.7 ± 2.2	3.9 ± 2.2	0.002
Subcortical atrophy	2.1 ± 1.4	2.7 ± 1.4	2.3 ± 1.4	0.019
Small vessel disease	1.3 ± 1.0	1.2 ± 1.1	1.2 ± 1.0	0.471

Values are presented as mean ± standard deviation or number (%).

CDR-SOB, Clinical Dementia Rating sum of boxes; ADAS-cog, Alzheimer’s Disease Assessment Scale cognitive subscale; MMSE, Mini-Mental State Examination; CVRS, Comprehensive Visual Rating Scale.

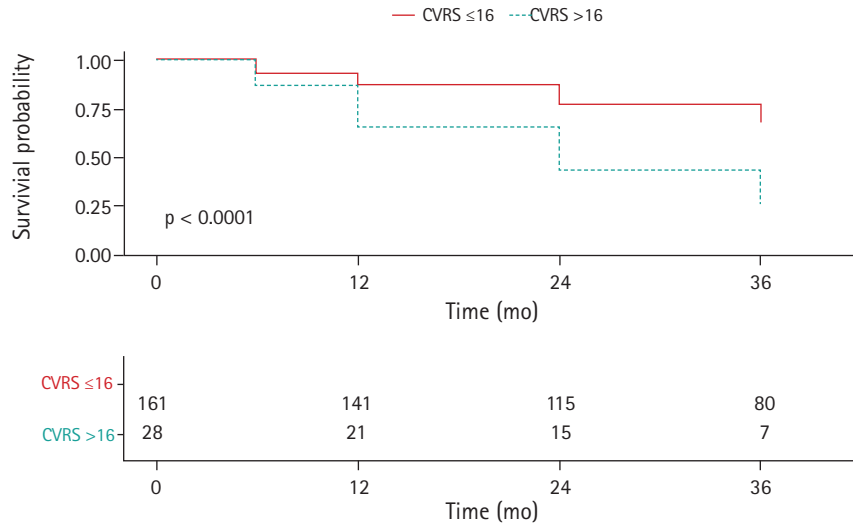


Fig. 1. Cox proportional hazards model for progression to Alzheimer disease (AD) dementia in patients with prodromal AD according to comprehensive visual rating scale (CVRS) score: low, ≤16 points; high, >16 points.

Table 3. Univariate and multivariate Cox regression analysis

	Univariate analysis		Multivariate analysis			
	HR (95% CI)	p-value	Model 1		Model 2	
			HR (95% CI)	p-value	HR (95% CI)	p-value
Age	1.001 (0.963–1.041)	0.951	0.977 (0.929–1.028)	0.371	0.953 (0.905–1.003)	0.065
Male	0.909 (0.550–1.503)	0.711	0.678 (0.378–1.217)	0.193	0.709 (0.391–1.285)	0.256
Education	1.035 (0.943–1.136)	0.473	1.109 (0.999–1.232)	0.051	1.083 (0.977–1.201)	0.129
APOE ε4 carrier	1.425 (1.001–2.029)	0.049	1.310 (0.866–1.984)	0.202	1.310 (0.875–1.961)	0.189
MMSE	0.848 (0.741–0.971)	0.017	0.866 (0.741–1.012)	0.071	NI	NI
ADAS-cog 11	1.221 (1.159–1.285)	< 0.001	NI	NI	1.177 (1.110–1.247)	< 0.001
CDR-SOB	2.163 (1.715–2.727)	< 0.001	2.166 (1.684–2.786)	< 0.0001	1.847 (1.420–2.401)	< 0.001
CVRS	1.089 (1.034–1.146)	0.001	1.110 (1.043–1.182)	0.001	1.084 (1.014–1.159)	0.019

CDR-SOB, Clinical Dementia Rating sum of boxes; MMSE, Mini-Mental State Examination; CVRS, Comprehensive Visual Rating Scale; NI, not included. Model 1: adjusted for age, sex, education, APOE ε4 carrier, MMSE, CDR-SOB, and CVRS. Model 2: adjusted for age, sex, education, APOE ε4 carrier, ADAS-cog 11, CDR-SOB, and CVRS.

Table 4. AUC comparisons of subscales between progressive and stable MCI

	Sensitivity (%)	Specificity (%)	PPV (%)	NPV (%)	AUC	95% CI
CVRS	63.9	59.4	42.9	77.6	0.642	0.558–0.726
Hippocampal atrophy	78.7	48.4	42.1	82.7	0.636	0.568–0.703
Cortical atrophy	57.4	64.1	43.2	75.9	0.635	0.551–0.719
Subcortical atrophy	63.9	56.2	41.1	76.6	0.610	0.526–0.694
Small vessel disease	73.8	35.2	35.2	73.8	0.548	0.464–0.632

AUC, area under the curve; MCI, mild cognitive impairment; PPV, positive predictive value; NPV, negative predictive value; CI, confidence interval; CVRS, Comprehensive Visual Rating Scale.

DISCUSSION

We assessed the effects of baseline cerebral structural abnormalities evaluated by CVRS on the progression to AD dementia

among older patients with prodromal AD. The important finding of the study was that patients with prodromal AD with higher baseline CVRS were more likely to progress to AD dementia during the 3-year follow-up. The early identification of prodromal

AD with a high risk of progression to dementia may allow preventive intervention.²²⁾ CVRS scores for prodromal AD could help identify patients who are most likely to be referred for intensive preventive care to slow further cognitive decline.²³⁾

The CVRS is composed of cerebral atrophy (23 points) and small vessel disease (7 points) scales, totaling 30 points. Therefore, the CVRS mainly reflects cerebral atrophy in brain MRI, which is a biomarker of neuronal injury or neurodegeneration. Approximately one-quarter of the CVRS comprises scores for small vessel disease, including white matter hyperintensities, lacunar infarcts, and microbleeds. Mixed pathologies, including neurodegenerative and cerebrovascular diseases, have been shown to be important for AD dementia in clinical-pathological studies.²⁴⁾ MCI has also been observed in approximately 60% of individuals in combination with vascular pathologies.

Visual scales are more feasible in outpatient clinics because they can be applied without using specific software.^{7,25)} Therefore, visual rating scales such as the CVRS are useful for evaluating subjects in primary clinics, whereas automated analyses are more appropriate for specific research for group analyses in longitudinal studies.²⁵⁾

Some visual rating scales such as Scheltens' hippocampal atrophy scale¹¹⁾ have been widely used for AD diagnosis and prediction,²⁶⁾ while other scales have little impact without subsequent replication.²⁷⁾ The CVRS suggests a unified integration of various validated scales related to neuronal and small vascular injury, while others have only assessed a single scale for specific diseases.²⁷⁾ Our findings were consistent with those of previous studies on the validation and correlation of the CVRS with cognitive measures.⁷⁾

Our study was limited by the inclusion of prodromal AD subjects as defined by amyloid positivity at baseline from the ADNI cohort, which may have resulted in selection bias. Amyloid PET is increasingly used in clinical practice to focus on study populations comprising prodromal AD rather than heterogeneous MCI subjects. Additionally, the CVRS includes visual rating scales that require experienced clinicians. To address this issue, we provided rater template images for use as a reference for the closest MRI images of the subjects.

In conclusion, the results of this study showed that baseline CVRS scores in patients with prodromal AD were independently associated with progression to AD dementia across a 3-year follow-up period. This finding suggests that the CVRS can be used to predict progression in patients with prodromal AD.

ACKNOWLEDGEMENTS

Data used in this study were downloaded from the Alzheimer's

Disease Neuroimaging Initiative (ADNI) database (adni.loni.usc.edu). The investigators within the ADNI contributed to its design and implementation and/or provided data but did not take part in the analysis or writing of this report. A complete listing of ADNI investigators can be found at http://adni.loni.usc.edu/wp-content/uploads/how_to_apply/ADNI_Acknowledgement_List.pdf.

CONFLICT OF INTEREST

The researchers claim no conflicts of interest.

FUNDING

This study was supported by a research fund from the Korean Geriatric Society, 2018.

AUTHOR CONTRIBUTION

Conceptualization, JWJ; Data curation, JWJ; Funding acquisition, JWJ; Investigation, JKC, JWJ; Methodology, JKC, JWJ; Project administration, JWJ; Supervision, JKJ, JWJ; Writing-original draft, JKC, JWJ; Writing-review & editing, JKC, JWJ.

REFERENCES

1. Dubois B, Feldman HH, Jacova C, Hampel H, Molinuevo JL, Blennow K, et al. Advancing research diagnostic criteria for Alzheimer's disease: the IWG-2 criteria. *Lancet Neurol* 2014;13: 614-29.
2. van Maurik IS, Zwan MD, Tijms BM, Bouwman FH, Teunissen CE, Scheltens P, et al. Interpreting biomarker results in individual patients with mild cognitive impairment in the Alzheimer's Biomarkers in Daily Practice (ABIDE) project. *JAMA Neurol* 2017;74:1481-91.
3. Chandra A, Dervenoulas G; Politis M; Alzheimer's Disease Neuroimaging Initiative. Magnetic resonance imaging in Alzheimer's disease and mild cognitive impairment. *J Neurol* 2019; 266:1293-1302.
4. McKhann GM, Knopman DS, Chertkow H, Hyman BT, Jack CR Jr, Kawas CH, et al. The diagnosis of dementia due to Alzheimer's disease: recommendations from the National Institute on Aging-Alzheimer's Association workgroups on diagnostic guidelines for Alzheimer's disease. *Alzheimers Dement* 2011; 7:263-9.
5. Albert MS, DeKosky ST, Dickson D, Dubois B, Feldman HH, Fox NC, et al. The diagnosis of mild cognitive impairment due to Alzheimer's disease: recommendations from the National Institute on Aging-Alzheimer's Association workgroups on diagnostic guidelines for Alzheimer's disease. *Alzheimers Dement*

- 2011;7:270-9.
6. Schneider JA, Arvanitakis Z, Leurgans SE, Bennett DA. The neuropathology of probable Alzheimer disease and mild cognitive impairment. *Ann Neurol* 2009;66:200-8.
 7. Jang JW, Park SY, Park YH, Baek MJ, Lim JS, Youn YC, et al. A comprehensive visual rating scale of brain magnetic resonance imaging: application in elderly subjects with Alzheimer's disease, mild cognitive impairment, and normal cognition. *J Alzheimers Dis* 2015;44:1023-34.
 8. Jang JW, Park JH, Kim S, Park YH, Pyun JM, Lim JS, et al. A 'Comprehensive Visual Rating Scale' for predicting progression to dementia in patients with mild cognitive impairment. *PLoS One* 2018;13:e0201852.
 9. Wechsler D. WMS-R: Wechsler Memory Scale-Revised manual. San Antonio, TX: Harcourt Brace Jovanovich; 1987.
 10. Jack CR Jr, Bernstein MA, Fox NC, Thompson P, Alexander G, Harvey D, et al. The Alzheimer's Disease Neuroimaging Initiative (ADNI): MRI methods. *J Magn Reson Imaging* 2008;27:685-91.
 11. Scheltens P, Leys D, Barkhof F, Huglo D, Weinstein HC, Vermersch P, et al. Atrophy of medial temporal lobes on MRI in "probable" Alzheimer's disease and normal ageing: diagnostic value and neuropsychological correlates. *J Neurol Neurosurg Psychiatry* 1992;55:967-72.
 12. Kim GH, Kim JE, Choi KG, Lim SM, Lee JM, Na DL, et al. T1-weighted axial visual rating scale for an assessment of medial temporal atrophy in Alzheimer's disease. *J Alzheimers Dis* 2014;41:169-78.
 13. Victoroff J, Mack WJ, Grafton ST, Schreiber SS, Chui HC. A method to improve interrater reliability of visual inspection of brain MRI scans in dementia. *Neurology* 1994;44:2267-76.
 14. Koedam EL, Lehmann M, van der Flier WM, Scheltens P, Pijnenburg YA, Fox N, et al. Visual assessment of posterior atrophy development of a MRI rating scale. *Eur Radiol* 2011;21:2618-25.
 15. O'Donovan J, Watson R, Colloby SJ, Fribank MJ, Burton EJ, Barber R, et al. Does posterior cortical atrophy on MRI discriminate between Alzheimer's disease, dementia with Lewy bodies, and normal aging? *Int Psychogeriatr* 2013;25:111-9.
 16. Scheltens P, Erkinjuntti T, Leys D, Wahlund LO, Inzitari D, del Ser T, et al. White matter changes on CT and MRI: an overview of visual rating scales. European Task Force on Age-Related White Matter Changes. *Eur Neurol* 1998;39:80-9.
 17. Johnson KA, Minoshima S, Bohnen NI, Donohoe KJ, Foster NL, Herscovitch P, et al. Appropriate use criteria for amyloid PET: a report of the Amyloid Imaging Task Force, the Society of Nuclear Medicine and Molecular Imaging, and the Alzheimer's Association. *Alzheimers Dement* 2013;9:e-1-16.
 18. Rosen WG, Mohs RC, Davis KL. A new rating scale for Alzheimer's disease. *Am J Psychiatry* 1984;141:1356-64.
 19. Hothorn T. Package "maxstat": Maximally Selected Rank Statistics [Internet]. Vienna, Austria: R-project.org; 2015 [cited 2021 Mar 15]. Available from: <http://CRAN.R-project.org/package=maxstat>.
 20. Therneau TM. Package "survival": Survival Analysis [Internet]. Vienna, Austria: R-project.org; 2015 Available from: <https://CRAN.R-project.org/package=survival>.
 21. Wickham H. ggplot2: elegant graphics for data analysis. New York, NY: Springer-Verlag; 2009.
 22. Pankratz VS, Roberts RO, Mielke MM, Knopman DS, Jack CR Jr, Geda YE, et al. Predicting the risk of mild cognitive impairment in the Mayo Clinic Study of Aging. *Neurology* 2015;84:1433-42.
 23. Rafii MS, Aisen PS. Alzheimer's disease clinical trials: moving toward successful prevention. *CNS Drugs* 2019;33:99-106.
 24. Kapasi A, DeCarli C, Schneider JA. Impact of multiple pathologies on the threshold for clinically overt dementia. *Acta Neuropathol* 2017;13:171-86.
 25. Menendez Gonzalez M, Suarez-Sanmartin E, Garcia C, Martinez-Cambor P, Westman E, Simmons A. Manual planimetry of the medial temporal lobe versus automated volumetry of the hippocampus in the diagnosis of Alzheimer's disease. *Cureus* 2016;8:e544.
 26. Dubois B, Feldman HH, Jacova C, Dekosky ST, Barberger-Gateau P, Cummings J, et al. Research criteria for the diagnosis of Alzheimer's disease: revising the NINCDS-ADRDA criteria. *Lancet Neurol* 2007;6:734-46.
 27. Harper L, Barkhof F, Fox NC, Schott JM. Using visual rating to diagnose dementia: a critical evaluation of MRI atrophy scales. *J Neurol Neurosurg Psychiatry* 2015;86:1225-33.