

# Insights into the Prostanoid Pathway in the Ovary Development of the Penaeid Shrimp *Penaeus monodon*

Wananit Wimuttisuk\*, Punsu Tobwor, Pacharawan Deenarn, Kannawat Danwisetkanjana, Decha Pinkaew, Kanyawim Kirtikara, Vanicha Vichai

National Center for Genetic Engineering and Biotechnology (BIOTEC), National Science and Technology Development Agency, Khlong Luang, Pathum Thani, Thailand

## Abstract

The prostanoid pathway converts polyunsaturated fatty acids (PUFAs) into bioactive lipid mediators, including prostaglandins, thromboxanes and prostacyclins, all of which play vital roles in the immune and reproductive systems in most animal phyla. In crustaceans, PUFAs and prostaglandins have been detected and often associated with female reproductive maturation. However, the presence of prostanoid biosynthesis genes remained in question in these species. In this study, we outlined the prostanoid pathway in the black tiger shrimp *Penaeus monodon* based on the amplification of nine prostanoid biosynthesis genes: *cytosolic phospholipase A2*, *hematopoietic prostaglandin D synthase*, *glutathione-dependent prostaglandin D synthase*, *prostaglandin E synthase 1*, *prostaglandin E synthase 2*, *prostaglandin E synthase 3*, *prostaglandin F synthase*, *thromboxane A synthase* and *cyclooxygenase*. TBLASTX analysis confirmed the identities of these genes with 51–99% sequence identities to their closest homologs. In addition, prostaglandin  $F_{2\alpha}$  (PGF<sub>2α</sub>), which is a product of the prostaglandin F synthase enzyme, was detected for the first time in *P. monodon* ovaries along with the previously identified PUFAs and prostaglandin E<sub>2</sub> (PGE<sub>2</sub>) using RP-HPLC and mass-spectrometry. The prostaglandin synthase activity was also observed in shrimp ovary homogenates using *in vitro* activity assay. When prostaglandin biosynthesis was examined in different stages of shrimp ovaries, we found that the amounts of *prostaglandin F synthase* gene transcripts and PGF<sub>2α</sub> decreased as the ovaries matured. These findings not only indicate the presence of a functional prostanoid pathway in penaeid shrimp, but also suggest a possible role of the PGF<sub>2α</sub> biosynthesis in shrimp ovarian development.

**Citation:** Wimuttisuk W, Tobwor P, Deenarn P, Danwisetkanjana K, Pinkaew D, et al. (2013) Insights into the Prostanoid Pathway in the Ovary Development of the Penaeid Shrimp *Penaeus monodon*. PLoS ONE 8(10): e76934. doi:10.1371/journal.pone.0076934

**Editor:** Tamas Zakar, John Hunter Hospital, Australia

**Received:** May 11, 2013; **Accepted:** September 5, 2013; **Published:** October 8, 2013

**Copyright:** © 2013 Wimuttisuk et al. This is an open-access article distributed under the terms of the Creative Commons Attribution License, which permits unrestricted use, distribution, and reproduction in any medium, provided the original author and source are credited.

**Funding:** This work has been supported by the National Science and Technology Development Agency (Grant number BT-02-SG-BC-5105 and BT-02-SG-BO-5203). The funders had no role in study design, data collection and analysis, decision to publish, or preparation of the manuscript.

**Competing interests:** The authors have declared that no competing interests exist.

\*\* E-mail: wananit.wim@biotec.or.th

## Introduction

Prostanoids are oxygenated derivatives of C-20 polyunsaturated fatty acids (PUFAs) that play active roles in inflammation, immune response, cardiovascular control and reproduction in most animals [1–3]. These PUFAs, which serve as precursors of the prostanoid pathway, include arachidonic acid (AA), eicosapentaenoic acid (EPA) and docosahexaenoic acid (DHA). The prostanoid pathway begins with the enzyme phospholipase A<sub>2</sub>, which releases AA from the phospholipids of cellular and intracellular membranes [3]. The released AA is then cyclized and subsequently reduced by the cyclooxygenase (COX) enzyme to form prostaglandin G<sub>2</sub> (PGG<sub>2</sub>) and prostaglandin H<sub>2</sub> (PGH<sub>2</sub>), respectively [4,5]. Downstream enzymes, including prostaglandin and thromboxane synthases, later convert PGH<sub>2</sub> to prostanoids, such as prostaglandins, prostacyclins and thromboxanes,

which serve as signaling molecules in various physiological responses [3,6].

The presence of PUFAs and prostaglandins in crustaceans has long been the focus of aquaculture research. All three prostanoid precursors (AA, EPA and DHA) have been identified in the Chinese prawn *Penaeus chinensis* [7], the Pacific white shrimp *Litopenaeus vannamei* [8], the green tiger prawn *Penaeus semisulcatus* [9], the kuruma prawn *Marsupenaeus japonicus* [10,11], the banana shrimp *Penaeus merguensis* [12] and *Penaeus monodon* [13,14]. In addition, EPA has been identified in the common littoral crab *Carcinus maenas* [15] and the Atlantic blue crab *Callinectes sapidus* [16], while DHA has been detected in the crayfish *Procambarus clarkii* [17]. On the other hand, prostaglandin E<sub>2</sub> (PGE<sub>2</sub>) and prostaglandin F<sub>2α</sub> (PGF<sub>2α</sub>) have been identified in *M. japonicus* [10] and the Florida crayfish *Procambarus paeninsulanus* [18,19]. Prostaglandin D<sub>2</sub> (PGD<sub>2</sub>), PGE<sub>2</sub> and PGF<sub>2α</sub> have been detected

in the fresh water field crab *Oziotelphusa senex senex* [20], while PGE<sub>2</sub>, thromboxane B2 (TXB<sub>2</sub>) and 6-keto-PGF<sub>1α</sub> have been reported in *C. maenas* [15]. In addition, PGE<sub>2</sub> has been identified in hemolymph, muscle and ovary of domesticated *P. monodon* [21], but the presence of PGF<sub>2α</sub> has not been reported in this species.

In crustaceans, one of the more prominent roles of prostanoids is the regulation of female reproductive maturation. For instance, the production of PGE<sub>2</sub> and PGF<sub>2α</sub> is positively correlated with ovarian maturation in *P. paeninsulanus* [18] and *O. senex senex* [20]. Furthermore, injection of PGE<sub>2</sub> and PGF<sub>2α</sub> into ovaries of *O. senex senex* significantly increased the number and the diameter of the oocytes in a dose-dependent manner [20]. In domesticated *P. monodon*, the amounts of PGE<sub>2</sub> in ovaries and haemolymph increased along with developing ovary stages [21]. However, the correlation between prostaglandins and crustacean ovary development may be species specific, as the amounts of PGE<sub>2</sub> and PGF<sub>2α</sub> were highest in ovaries stage I and continued to decrease until stage IV in *M. japonicus* [10]. Nevertheless, these findings suggest a possible involvement of the prostanoid biosynthesis in crustacean female reproductive system.

Although the production of prostanoids and their precursors is well-established in most crustaceans, prostanoid biosynthesis genes in these species are poorly characterized. Thus far, the only crustacean with a fully constructed prostanoid pathway is the fresh water flea *Daphnia pulex*, whose annotated genome sequence revealed nine prostanoid biosynthesis genes: *cytosolic phospholipase A2 (cPLA2)*, *COX*, *prostaglandin D2 synthase A*, *prostaglandin D2 synthase B*, *prostaglandin E2 synthase (PGES)*, *carbonyl reductase 1*, *thromboxane A* and *thromboxane B*, and two prostanoid receptors *prostanoid receptor EP4 isoform A* and *B* [22]. In marine crustaceans, *COX* genes have been identified in *Gammarus* spp. and *Caprella* spp. [23], while *PGES* genes have been characterized in *L. vannamei* [24], the American lobster *Homarus americanus* (Accession: MGID155886 from the Marine Genomic Project) [24] and the sea lice *Lepeophtheirus salmonis* and *Caligus rogercresseyi* [25].

Due to the roles of prostanoids in the reproductive system in most crustaceans, the characterization of the prostanoid pathway in economically valuable organisms, such as penaeid shrimp, is essential for both scientific gain and potential applications in aquaculture practice. In this study, we propose a scheme for the *P. monodon* prostanoid pathway based on the identification of eight *P. monodon* prostanoid biosynthesis genes, the detection of lipid precursors and prostaglandins, and the detection of prostaglandin synthase activity. The correlations observed among gene transcription, prostaglandin production, and ovarian maturation also suggest that prostaglandin biosynthesis may be involved in the regulation of the *P. monodon* female reproductive system.

**Table 1.** TBLASTX analyses of *P. monodon* prostanoid biosynthesis genes.

Genes	Pm accession		Matched accession #		E-value
	#	AA	(Reference species)	Identity	
<i>cPLA2</i>	JN003878	998	NM_001081843 ( <i>Equus caballus</i> )	60%	2e-180
<i>hPGDS</i>	JN003879	203	HM231278 ( <i>Eriocheir sinensis</i> )	99%	5e-37
<i>gPGDS</i>	JN003880	153	XM_003694283 ( <i>Apis florea</i> )	79%	4e-23
<i>PGES3</i>	JN003881	164	JF806619 ( <i>Litopenaeus vannamei</i> )	51%	2e-108
<i>PGES1</i>	JN003882	145	JQ917473 ( <i>Nilaparvata lugens</i> )	76%	7e-35
<i>PGES2</i>	JN003883	338	XM_003706983 ( <i>Megachile rotundata</i> )	89%	4e-108
<i>PGFS</i>	JN003884	317	JX513906 ( <i>Reticulitermes flavipes</i> )	98%	3e-67
<i>TBXAS</i>	JN003885	533	XM_004069858 ( <i>Oryzias latipes</i> )	60%	8e-62
<i>COX</i>	KF501342	614	GQ180796 ( <i>Gammarus</i> sp.)	91%	0.0

doi: 10.1371/journal.pone.0076934.t001

## Results

### Identification of *P. monodon* prostanoid biosynthesis genes

Based on available EST sequences from The Black Tiger Shrimp EST Project [26] and the Marine Genomics Project [24], short fragments of *P. monodon* prostanoid biosynthesis genes were amplified from shrimp ovary cDNA. RACE-PCR was used to obtain full-length gene sequences, resulting in the identification of nine putative *P. monodon* prostanoid biosynthesis genes: *cytosolic phospholipase A2 (PmcPLA2)*, *hematopoietic prostaglandin D synthase (PmhPGDS)*, *glutathione-dependent prostaglandin D synthase (PmgPGDS)*, *prostaglandin E synthase 1 (PmPGES1)*, *prostaglandin E synthase 2 (PmPGES2)*, *prostaglandin E synthase 3 (PmPGES3)*, *prostaglandin F synthase (PmPGFS)*, *thromboxane A synthase (PmTBXAS)*, and *cyclooxygenase (PmCOX)*. These gene sequences were then analyzed by TBLASTX, revealing 51-99% sequence identities of the predicted *P. monodon* enzymes when compared with their closest homologs (Table 1).

### Analysis of conserved residues and domains in *PmPGES1*, *PmPGES2*, *PmPGES3* and *PmPGFS* genes

The putative *P. monodon* prostanoid biosynthesis genes were submitted to the Conserved Domain Architecture Retrieval Tool (CDART) for protein domain prediction, revealing that the *P. monodon* proteins contain the same domain types and positions as the prostanoid enzymes found in other species (Figure S1). At this point, *PmPGES* and *PmPGFS* were examined in more details, as these genes are likely to be responsible for the biosynthesis of PGE<sub>2</sub> and PGF<sub>2α</sub>,

which has been shown to affect ovarian development in other crustaceans [10,18,20].

In *P. monodon*, three isoforms of *PmPGES* have been cloned and characterized, namely *PmPGES1*, *PmPGES2* and *PmPGES3*, which have corresponding isoforms in mammals. *PGES1* or *membrane-associated prostaglandin E synthase 1* is a member of the Membrane-Associated Protein involved in Eicosanoid and Glutathione metabolism (MAPEG) [27,28]. *PGES1* requires glutathione for its enzymatic function, which involves converting  $\text{PGH}_2$  to  $\text{PGE}_2$  [27]. Multiple sequence alignment of *PmPGES1* revealed the conservation of most catalytic residues. For example, D47, which is highly conserved in the *PGES1* subgroup of MAPEG, was found in *PmPGES1* (Figure 1, star) [29]. In addition, key catalytic residues that interact with  $\text{PGH}_2$  (R108 and T112 - Figure 1, white arrow heads) as well as glutathione (R36, N72, E75, H111, Y115 and R122 - Figure 1, black arrows) were conserved in *PmPGES1* [29-31]. Lastly, *PmPGES1* also contains the consensus sequence<sup>64</sup>ERXXAXNXX<sup>75</sup> E required for oxygenation product formation (Figure 1, underlined) [31], confirming that *PmPGES1* possesses all the necessary residues for its enzymatic function.

*PGES2* or *membrane-associated prostaglandin E synthase 2* is a Golgi membrane-associated pre-protein that requires spontaneous cleavage of the N-terminal hydrophobic domain to become a mature cytosolic enzyme [32,33]. The catalytic domain of *PGES2* is a glutathione/thioredoxin-like domain that can be activated by various thiol reducing reagents [34]. Sequence alignment of *PmPGES2* revealed a conserved <sup>66</sup>C-X-X-<sup>69</sup>C (Figure 2, black arrow), which corresponded to <sup>110</sup>C-X-X-<sup>113</sup>C catalytic triad in the human *PGES2* active site [35]. A conserved N-terminal hydrophobic domain (Figure 2, underlined) was also identified in *PmPGES2*, consistent with N-terminal cleavage to generate the mature enzyme.

*PGES3* or *cytosolic prostaglandin E synthase (cPGES)* is a 23 kDa GSH-requiring enzyme that was originally termed p23 based on its initial characterization as a co-chaperone of heat shock protein 90 [28,36]. Unlike the membrane-bound *PGES1* and *PGES2*, *PGES3* is a cytosolic, glutathione-requiring enzyme that interacts with casein kinase II (CKII) and Hsp90 [36,37]. In human *PGES3*, two serine residues (S113 and S118 - Figure 3, arrows) are phosphorylated by CKII to increase *PGES3* enzymatic activity. However, only the putative N-terminal phosphorylated serine is conserved in *PmPGES3* (Figure 3, black arrow) [37]. CDART prediction of the putative *PmPGES3* enzyme revealed the presence of an alpha crystallin-Hsps-p23 like super family domain, which is the same domain found in all *PGES3* homologs (Figure S1), further confirming the identity of the *PmPGES3* gene.

Lastly, *PGFS* encodes a bifunctional enzyme in the aldo-keto reductase (AKR) superfamily that converts  $\text{PGD}_2$  and  $\text{PGH}_2$  to (5Z,13E)-(15S)-9 $\alpha$ ,11 $\beta$ ,15-trihydroxyprosta-5,13-dien-1-oic acid (9 $\alpha$ ,11 $\beta$ - $\text{PGF}_2$ ) and  $\text{PGF}_{2\alpha}$ , respectively [38-40]. CDART analysis revealed that *PmPGFS* contains the domain in the aldo-keto reductase superfamily (Figure S1), which is characteristic of *PGFS* enzymes [41]. Multiple sequence alignment also indicated that residues required for substrate binding site (D49, S165, N166, Q189, L218, S270, R275 -

Figure 4, black arrows) and NADP<sup>+</sup> cofactor binding site (A51, Y54, W85, H116 - Figure 4, white arrow heads) are also conserved in *PmPGFS* [42].

### RP-HPLC and mass spectrometry analysis of PUFAs and prostaglandins in shrimp ovaries

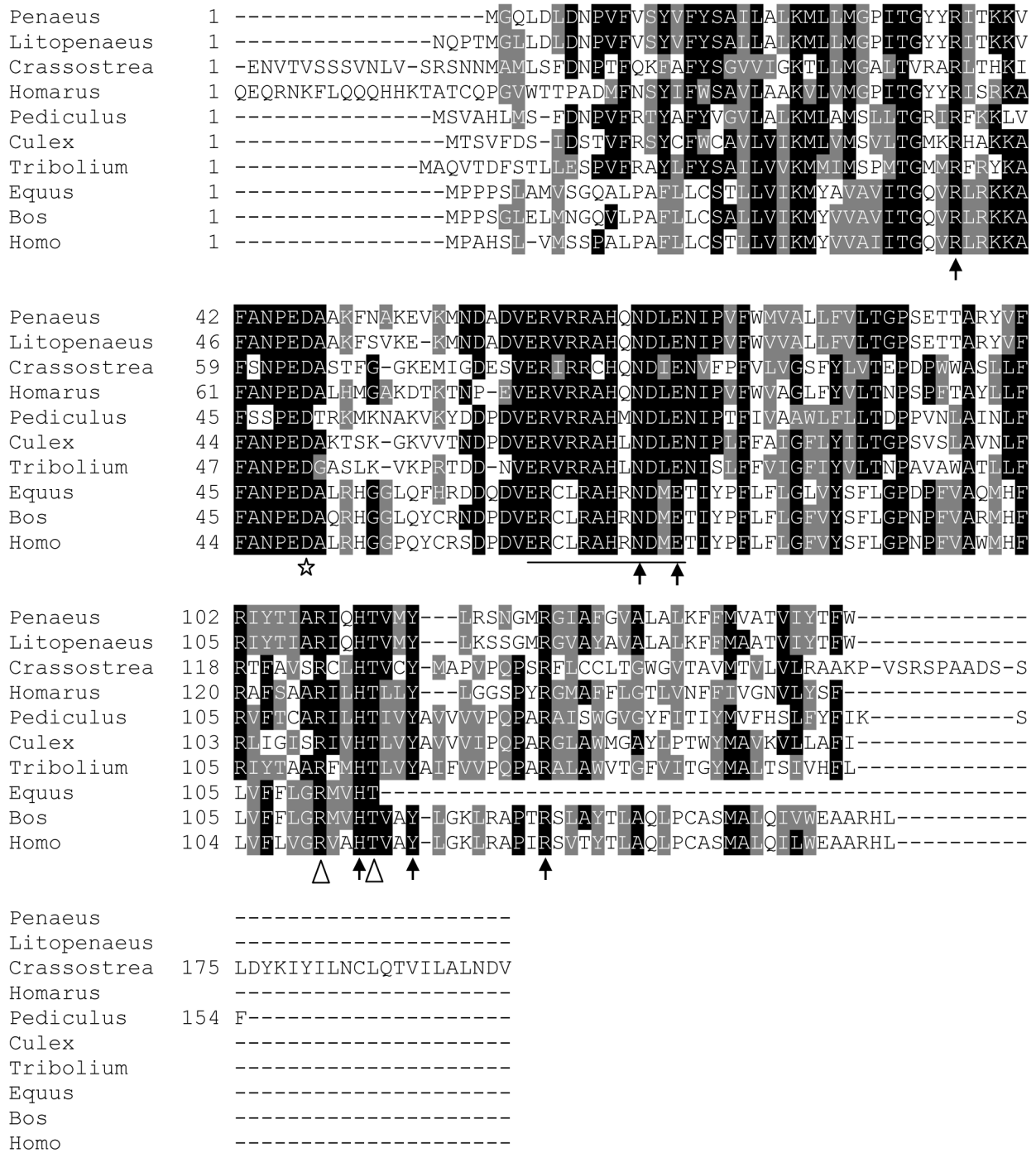
Once the prostanoid biosynthesis genes had been identified, chemical analysis was performed to detect the presence of corresponding prostanoids in wild *P. monodon*. Stage IV shrimp ovaries from five broodstock were pooled, homogenized and subjected to solvent extraction. Subsequent RP-HPLC analysis led to the detection of  $\text{PGF}_{2\alpha}$  and  $\text{PGE}_2$  as two small peaks that eluted at 9.26 and 10.03 minutes, respectively (Figure 5A and 5B). The identities of these prostaglandins were later confirmed by mass analysis (Figure 5C and 5D). In addition, three prostanoid precursors EPA, DHA and AA were detected with elution times of 30.08, 31.74 and 32.56 minutes, respectively (Figure S2, A and B). Again, mass spectra confirmed the identities of these PUFAs (Figure S2, C-E). Other prostanoids i.e. 6-keto- $\text{PGF}_{1\alpha}$  and  $\text{PGD}_2$  were not detected in *P. monodon* extracts from stage I-III shrimp ovaries, hepatopancreases, lymphoid organs or hemolymph.

### Prostaglandin synthase activity in *P. monodon* ovarian tissue

The identification of *PmPGES* and *PmPGFS* genes and their corresponding products led us to speculate that prostaglandin synthase activity could be present in shrimp ovaries. To test this hypothesis, *in vitro* prostaglandin synthase activity assay was performed by incubating shrimp ovary homogenates with 25  $\mu\text{M}$  AA at 28 °C, 200 rpm. The samples were subsequently collected at different time points to monitor prostaglandin production. Prior to the treatment, the basal concentration of  $\text{PGE}_2$  in shrimp ovary homogenates was 9.6 ng/g tissue. After 30 minutes of incubation with AA, the  $\text{PGE}_2$  concentration increased to 19.6 ng/g tissue and remained at this level before declining after 120 minutes of treatment (Figure 6A). Similarly, the concentration of  $\text{PGF}_{2\alpha}$  increased from the basal level of 10.9 ng/g tissue to 23.3 ng/g tissue after 60 minutes of incubation with AA and remained at the same level from 60 to 360 minutes after the treatment (Figure 6B). Together, these results suggest that the prostaglandin synthase activity is present in *P. monodon* ovary homogenates.

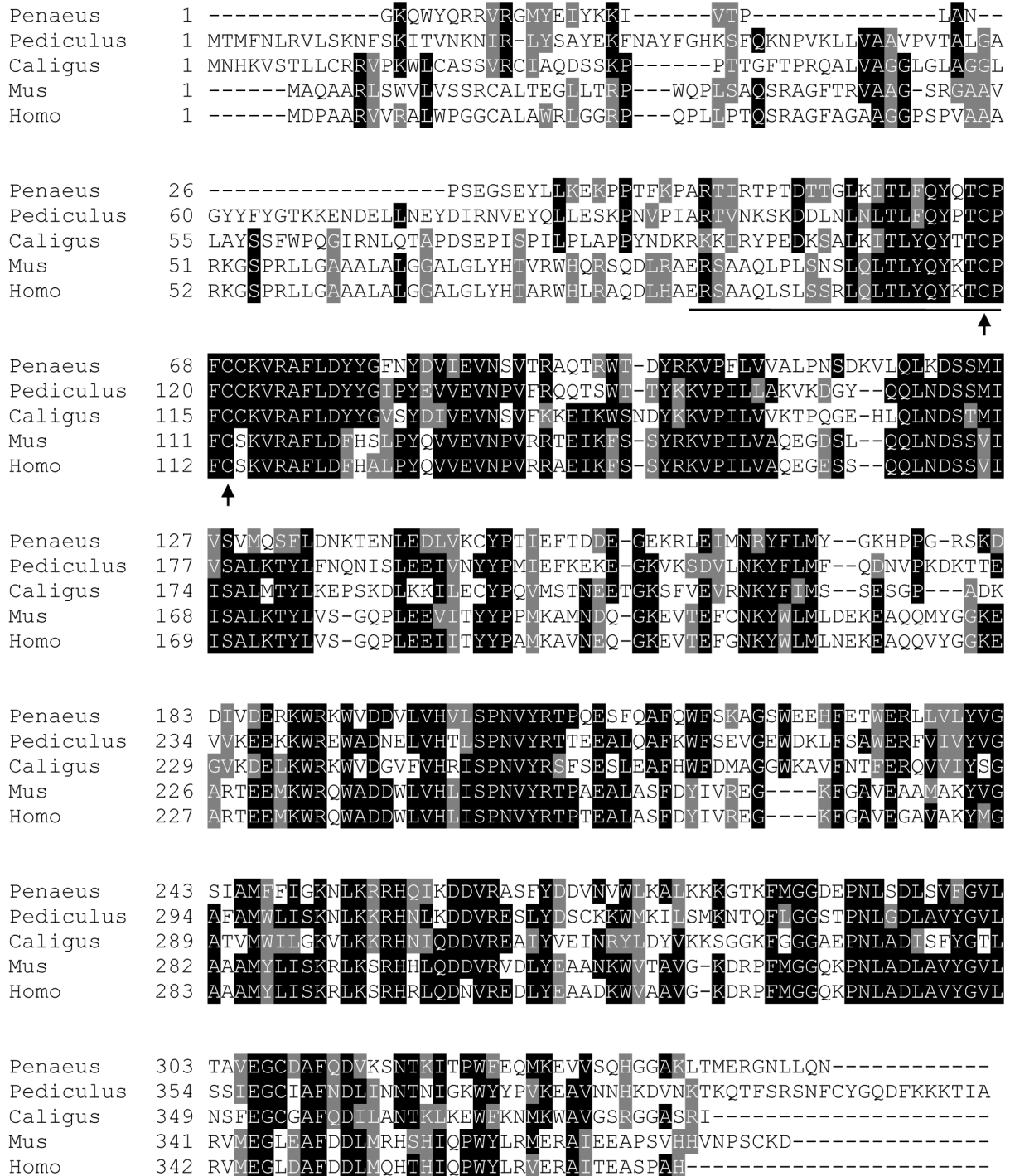
### Role of prostaglandin biosynthesis in shrimp ovarian development

The correlation between the amounts of prostaglandin and ovarian maturation in *P. paeninsulanus* [43], *M. japonicus* [10] and *O. senex senex* [20] led to the hypothesis that prostaglandins affect female reproductive development in crustaceans. To assess the possible role of prostaglandin biosynthesis in *P. monodon* ovarian maturation, we estimated the concentrations of  $\text{PGE}_2$  and  $\text{PGF}_{2\alpha}$  in different stages of shrimp ovaries. When compared with stage I ovaries, we observed that the  $\text{PGE}_2$  concentrations were lower in ovaries stage II and III and higher in ovaries stage IV (Figure 7A). On the other hand, the  $\text{PGF}_{2\alpha}$  concentrations were highest in stage



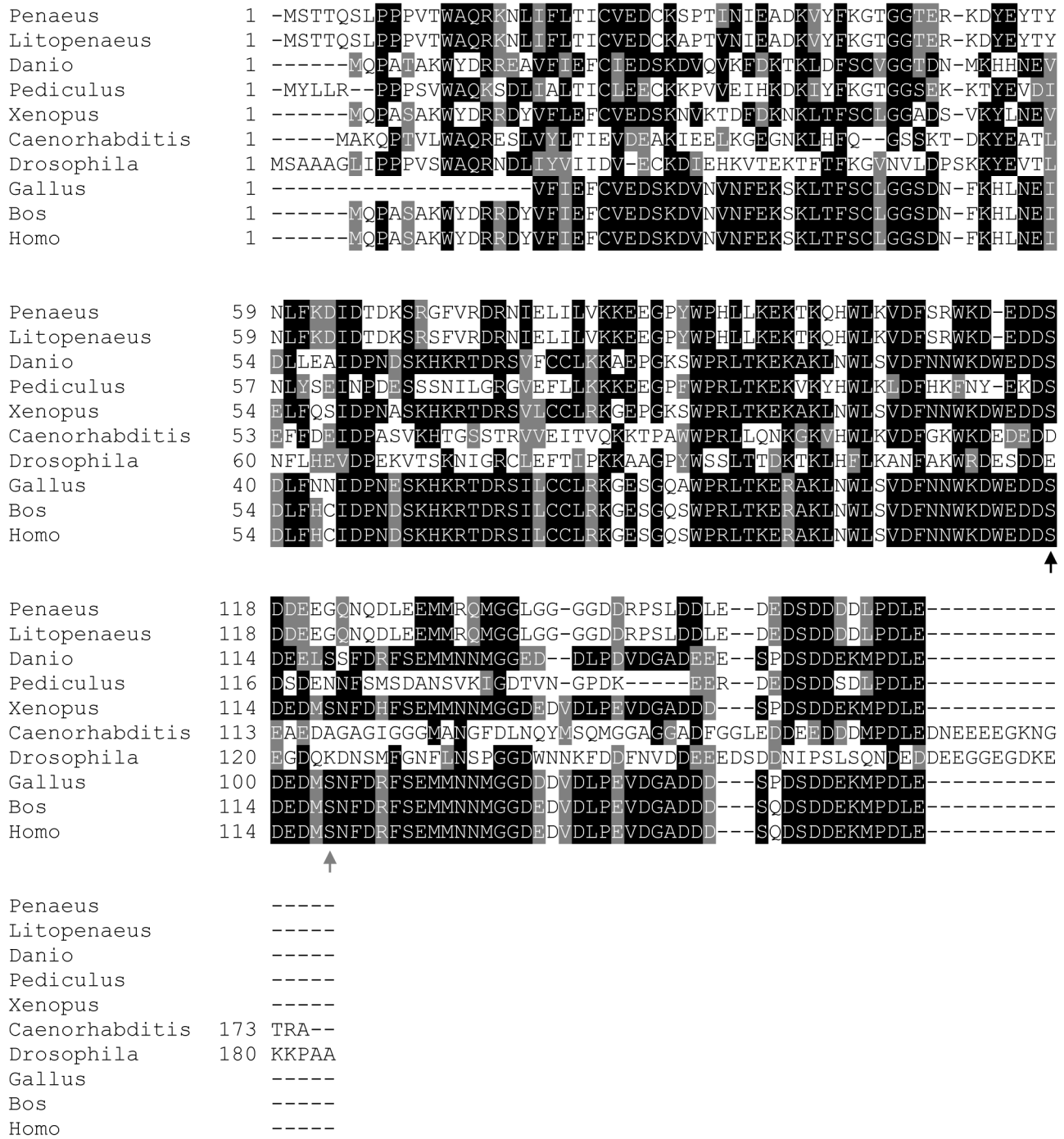
**Figure 1. Mapping of essential residues in the predicted *P. monodon* PGES1 enzyme.** Multiple sequence alignments of *P. monodon* PGES1 and their homologs showed a conserved residue for the MAPEG family (white star), catalytic residues that interact with PGH<sub>2</sub> (white arrow head), essential residues for H-bonding to GSH (black arrows) and consensus sequence required for oxygenation product (underline). Genus and species used in this alignment are abbreviated as followed: *Penaeus* – *P. monodon*, *Litopenaeus* – *L. vannamei*, *Crassostrea* – *Crassostrea virginica*, *Homarus* – *H. americanus*, *Pediculus* – *Pediculus humanus corporis*, *Culex* – *Culex quinquefasciatus*, *Tribolium* – *Tribolium castaneum*, *Equus* – *Equus caballus*, *Bos* – *Bos taurus* and *Homo* – *Homo sapiens*.

doi: 10.1371/journal.pone.0076934.g001



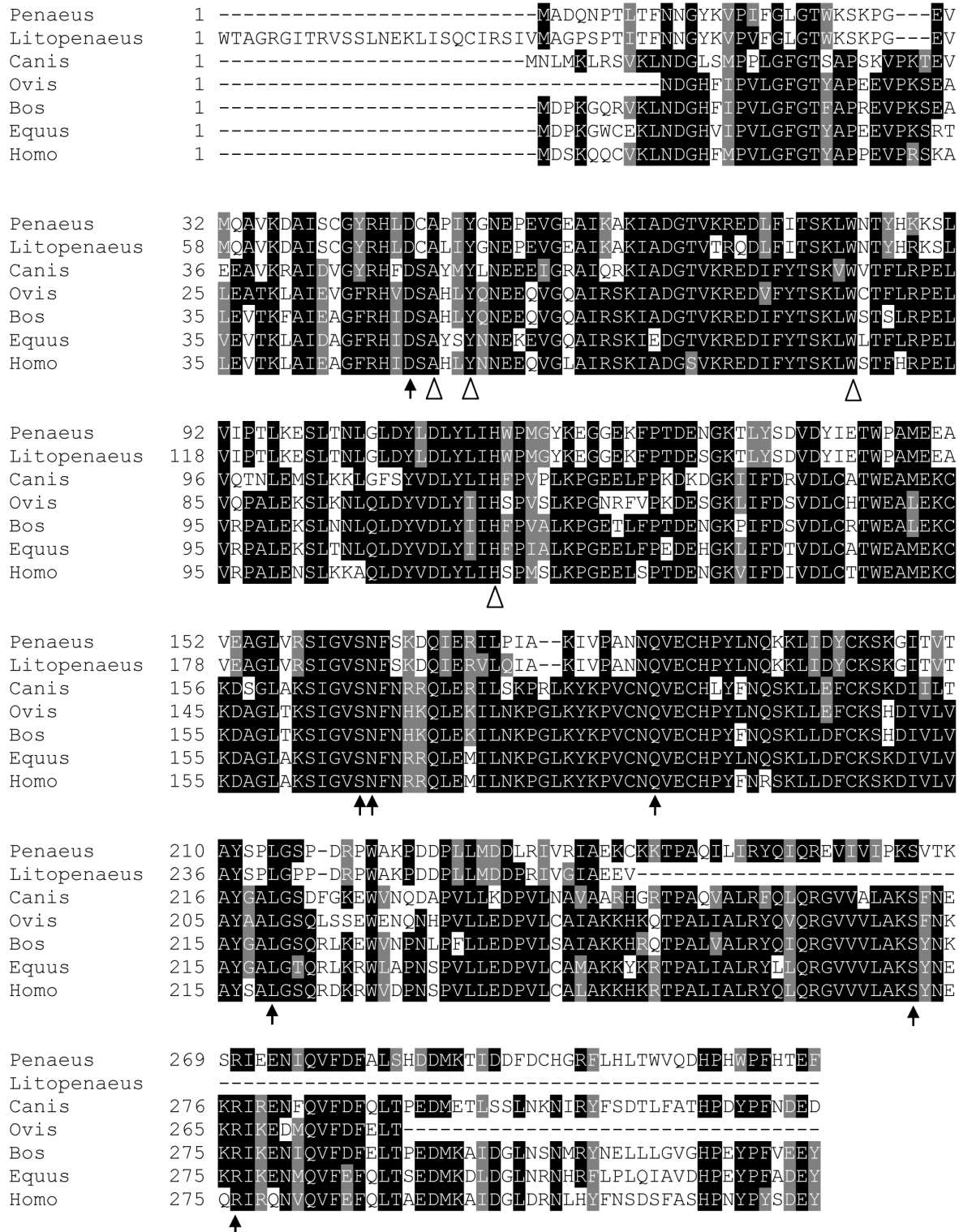
**Figure 2. Mapping of essential residues in the predicted *P. monodon* PGES2 enzyme.** Multiple sequence alignments of *P. monodon* PGES2 protein and their homologs were performed, revealing conserved Cys residues at the active site (black arrows) and the N-terminal sequence of the mature enzyme (underline). Genus and species used in this alignment are abbreviated as followed: *Penaeus* – *P. monodon*, *Pediculus* – *P. humanus corporis*, *Caligus* – *Caligus rogercresseyi*, *Mus* – *Mus musculus* and *Homo* – *H. sapiens*.

doi: 10.1371/journal.pone.0076934.g002



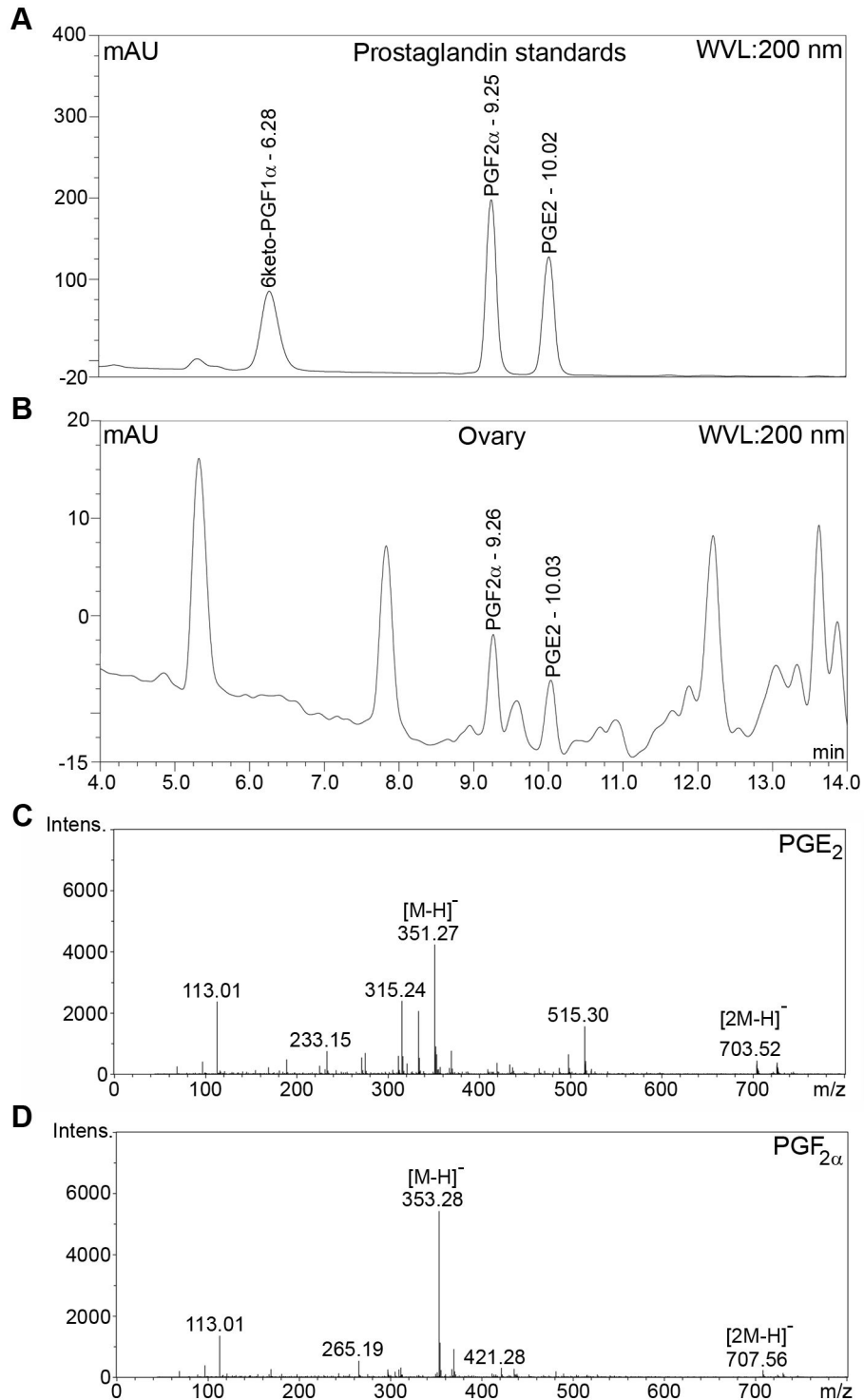
**Figure 3. Mapping of essential residues in the predicted *P. monodon* PGES3 enzyme.** Multiple sequence alignments of *P. monodon* PGES3 protein and their homologs reveal one conserved serine residue for the CKII phosphorylation site (black arrow), while the other phosphorylation site was not conserved (gray arrow). Genus and species used in this alignment are abbreviated as followed: *Penaeus* – *P. monodon*, *Litopenaeus* – *L. vannamei*, *Danio* – *Danio rerio*, *Pediculus* – *P. humanus corporis*, *Xenopus* – *Xenopus laevis*, *Caenorhabditis* – *Caenorhabditis elegans*, *Drosophila* – *Drosophila melanogaster*, *Gallus* – *Gallus gallus*, *Bos* – *B. taurus* and *Homo* – *H. sapiens*.

doi: 10.1371/journal.pone.0076934.g003



**Figure 4. Mapping of essential residues in the predicted *P. monodon* PGFS enzyme.** Multiple sequence alignments of *P. monodon* PGFS protein and their homologs were performed, revealing residues that are important for substrate (black arrows) and the NADP<sup>+</sup> cofactor (white arrow head) binding. Genus and species used in this alignment are abbreviated as followed: *Penaeus* – *P. monodon*, *Litopenaeus* – *L. vannamei*, *Canis* – *Canis lupus familiaris*, *Ovis* – *Ovis aries*, *Bos* – *B. taurus*, *Equus* – *Equus caballus* and *Homo* – *H. sapiens*.

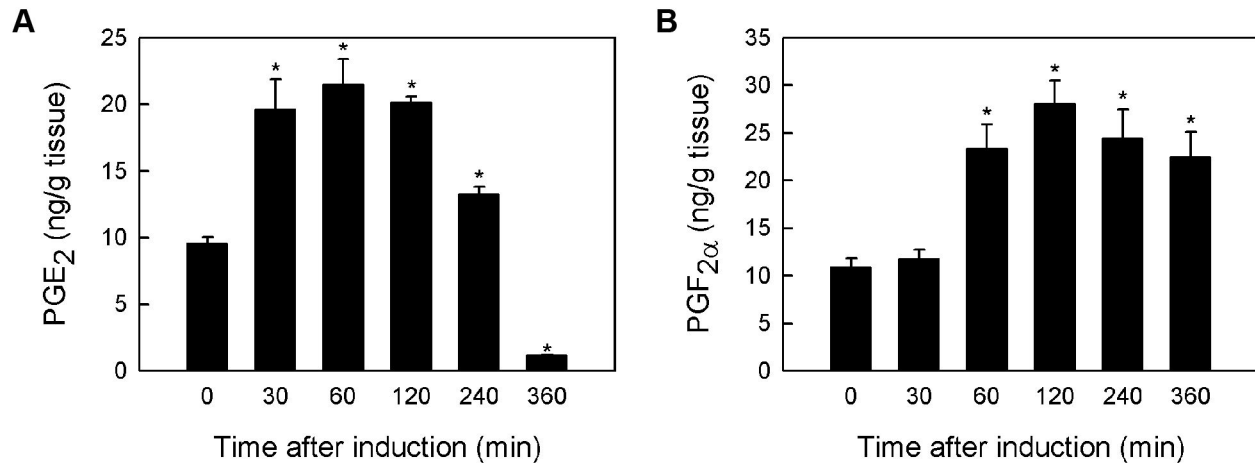
doi: 10.1371/journal.pone.0076934.g004



**Figure 5. HPLC analysis and mass spectra of the prostaglandins in shrimp ovary extract.** Ovaries from 5 wild broodstock were homogenized in HBSS, pooled together and incubated at 28 °C, 200 rpm for 1 h. The homogenate was extracted and analyzed by RP-HPLC and mass spectrometry as described in Materials and Methods. RP-HPLC elution profiles at 200 nm wavelength of commercially available prostaglandin standards (A) and prostaglandins found in ovary homogenate (B). Subsequent mass spectrometry analysis of PG in ovary homogenate yielded mass spectra of PGE<sub>2</sub> (C) and PGF<sub>2α</sub> (D).

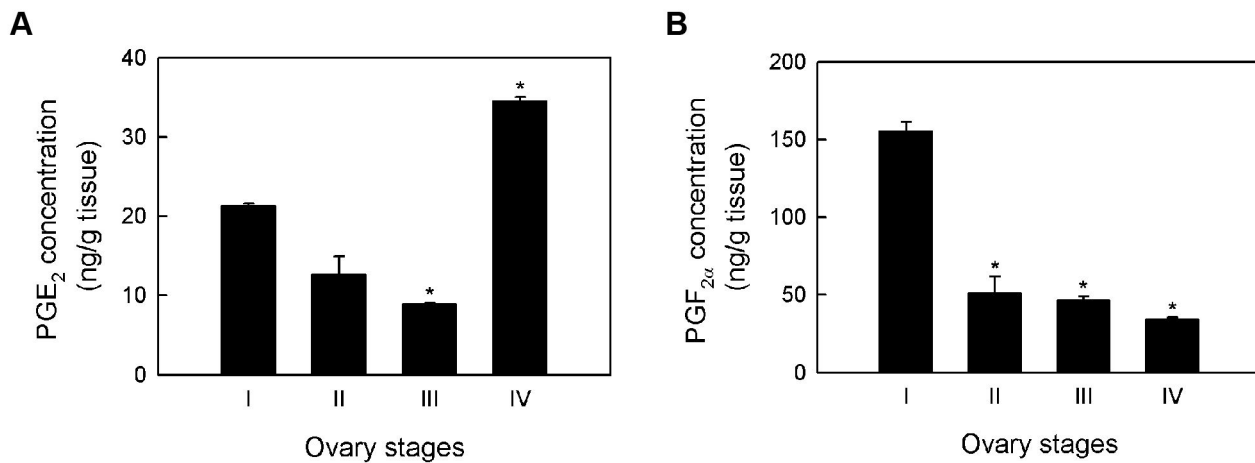
doi: 10.1371/journal.pone.0076934.g005





**Figure 6. *In vitro* prostaglandin synthase activity assay using shrimp ovary homogenates.** Shrimp ovary homogenates were incubated with 25  $\mu$ M AA at 28 °C and collected at different time points (0, 30, 60, 120, 240 and 360 min). The homogenates were spun down and concentrations of PGE<sub>2</sub> (A) and PGF<sub>2 $\alpha$</sub>  (B) in the homogenate supernatant were estimated using EIA. The experiment was performed in triplicate and error bars indicate the standard deviation from the means. Asterisk indicates significant difference between the prostaglandin concentration at 0 h and the marked time point ( $P < 0.05$ ).

doi: 10.1371/journal.pone.0076934.g006



**Figure 7. PGE<sub>2</sub> and PGF<sub>2 $\alpha$</sub>  concentrations in each ovary stage.** Shrimp ovaries from each stage were pooled together based on the GSI value ( $N = 3$  for each ovary stage) and homogenized. The amounts of (A) PGE<sub>2</sub> and (B) PGF<sub>2 $\alpha$</sub>  were determined using enzyme immunoassay. Error bars indicate the standard deviation from the means. These graphs are representatives of two independent experiments that yielded similar results.

doi: 10.1371/journal.pone.0076934.g007

I ovaries and steadily decreased as the ovaries matured (Figure 7B).

To correlate the mRNA expression levels of prostaglandin biosynthesis genes with different ovarian maturation stages, quantitative real-time PCR analysis was performed on ovaries of 27 wild-caught broodstock from the Andaman Sea (Table 2). Four sets of primers for *PmPGES1*, *PmPGES2*, *PmPGES3* and *PmPGFS* genes were used in this study (Table 3). To determine whether the gene was up- or down-regulated at a certain developmental stage, mRNA expression levels were

compared with that of stage I ovaries, which was taken as a baseline. It was observed that all three *PmPGES* isoforms displayed different expression profiles during the development of ovaries. *PmPGES1* was up-regulated 16-fold in stage II ovaries, then continued to decrease until it reached baseline in stage IV (Figure 8A). For *PmPGES2*, the change in expression from stage I to stage III ovaries was not significant. However, a significant 27-fold down-regulation of this transcript was observed in stage IV ovaries (Figure 8B). The *PmPGES3* expression level did not change significantly throughout ovarian

**Table 2.** Lists of ovary maturation stage, the number of shrimp (N), average body weight, body length, ovary weight and GSI of the wild *P. monodon* samples used in real-time PCR analysis.

Ovary stages	N	Body Weight (g)	Body length (cm)	Ovary weight (g)	GSI
1	7	256.59±26.51	30.00±0.94	4.33±0.72	1.79±0.10
2	7	250.47±41.40	30.50±2.65	6.19±1.26	2.47±0.21
3	7	239.36±44.01	30.00±3.55	12.29±2.79	5.12±0.45
4	6	233.46±33.47	29.33±1.54	15.56±2.58	6.95±0.37

doi: 10.1371/journal.pone.0076934.t002

**Table 3.** Primer sequences used in quantitative real-time PCR analysis.

Genes	Primers	Sequence
PGES1	PGES1-RT-F	CAAGAAGGTATTGCGCAACC
	PGES1-RT-R	CCGTTGCTCCTCAGGTACATA
PGES2	PGES2-RT-F	GGGAAGCATCCACCTGGACGTTCC
	PGES2-RT-R	GGTGCCGTCTTTCAGGTTCTTGCC
PGES3	PGES3-RT-F	GACTGCAAAATCTCCACCAT
	PGES3-RT-R	ACTTTGAGCCAGTGCTGCTT
PGFS	PGFS-RT-F	GGAGAAGTAATGCAGGCTGT
	PGFS-RT-R	GCCAGGTCTCAATGTAATCC

doi: 10.1371/journal.pone.0076934.t003

development (Figure 8C). Lastly, the amount of *PmPGFS* gene transcripts steadily decreased as the ovary maturation progressed from stage I to stage IV (Figure 8D).

## Discussion

In this study, the characterization of the *P. monodon* prostanoid pathway reveals that *P. monodon* contains the same types and number of prostaglandin synthase isoforms as those found in mammals (Fig. 1-4; Table 1). In addition to the three *PmPGES* isoforms shown in the Results section, *P. monodon* also encodes two isoforms of prostaglandin *D* synthase that matched the glutathione-dependent prostaglandin *D* synthase and hematopoietic prostaglandin *D* synthase genes originally identified in mammals. Interestingly, the proposed prostanoid pathway in another crustacean *Daphnia pulex* contains only one isoform of each prostanoid biosynthesis gene [22], suggesting that the organization of the *P. monodon* prostanoid pathway is more conserved with those in mammals, or other divergent prostanoid biosynthetic genes are present in *D. pulex* that are not annotated. To compare if the *P. monodon* prostanoid protein sequence is more closely related to its homologs in *D. pulex* or mammals, phylogenetic analysis of PGES1 was performed, revealing that *PmPGES1* is more closely related to its crustacean homologs, including *D. pulex*, than to its mammalian homologs (Figure S3).

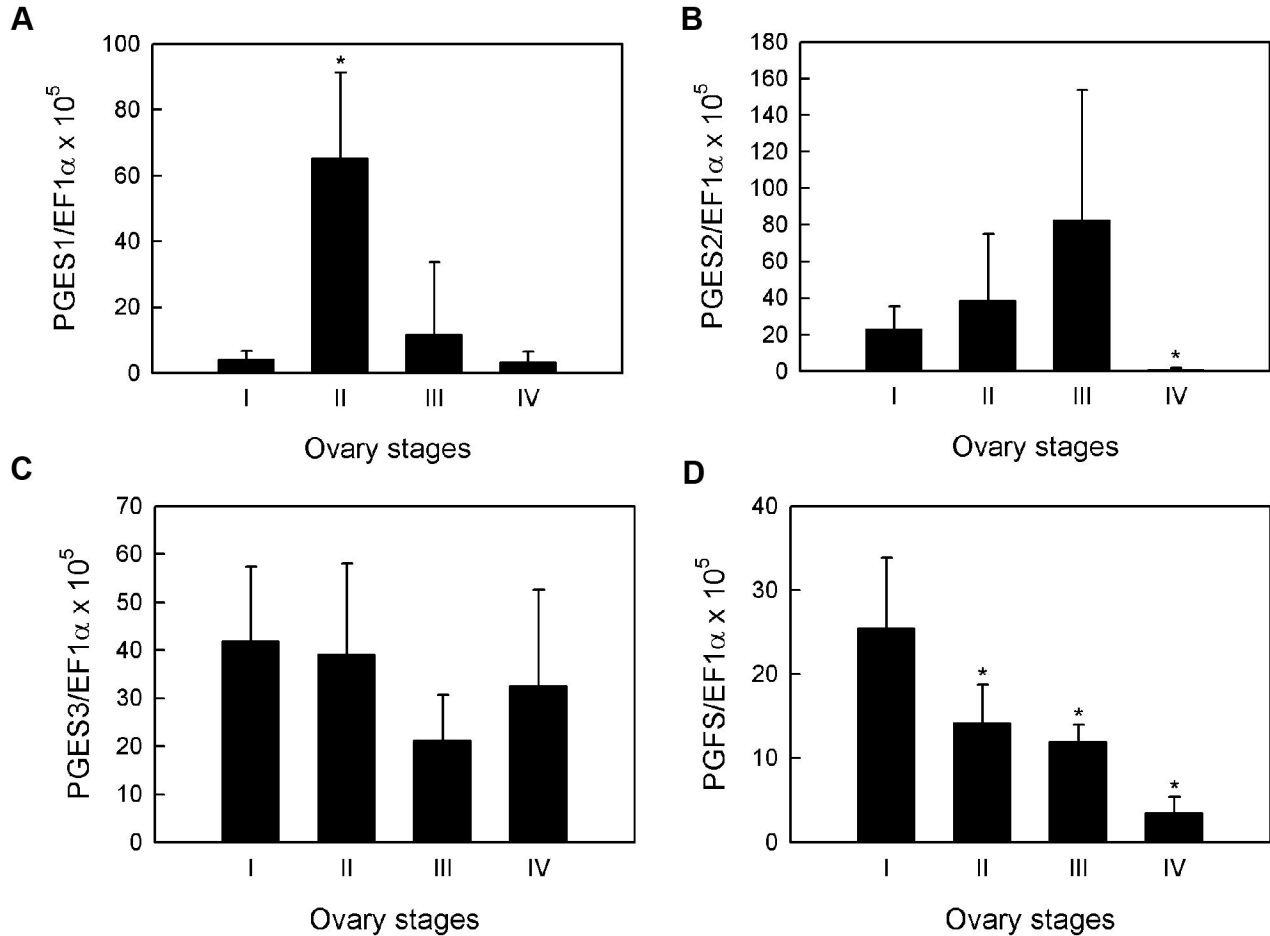
PUFAs and PGE<sub>2</sub> have previously been identified in domesticated *P. monodon*, although it was not clear whether

these molecules were synthesized *de novo* as the animals had been fed with high-PUFA diets [13,21]. In this study, PGF<sub>2α</sub> was detected by RP-HPLC and mass spectrometry analysis in ovaries of wild-caught *P. monodon*, suggesting that these molecules occurred naturally in wild population consistent with *de novo* synthesis and were not the result of specific diets or rearing conditions. Although *PmPGDS* and *PmTBXAS* genes are present in *P. monodon* (Table 1), we were unable to detect the corresponding prostanoid products PGD<sub>2</sub>, PGF<sub>1α</sub> and TBX<sub>2</sub> which have previously been identified in other arthropods [1,20,44,45]. Therefore, these prostanoids may be present in small amounts in *P. monodon*.

To provide further proof of a functioning prostanoid synthetic pathway, we assessed the prostaglandin synthase activity in penaeid shrimp using an *in vitro* activity assay to monitor PGE<sub>2</sub> and PGF<sub>2α</sub> biosynthesis in *P. monodon* [46]. After shrimp ovary homogenates were incubated with AA, the PGE<sub>2</sub> and PGF<sub>2α</sub> concentrations increased significantly when compared to the basal concentrations (Figure 6). In particular, the rise and fall of PGE<sub>2</sub> concentrations observed in this study is similar to the study performed on *A. americanum* [47]. As the PGE<sub>2</sub> biosynthesis activities have already been established in the Tobacco hornworm *Manduca sexta* [48], the blood sucking bug *Triatoma infestans* [49], the firebrat *Thermobia domestica* [50] and the cricket *Teleogryllus commodus* [51], we propose that the PGE<sub>2</sub> biosynthesis is conserved among different arthropods.

Once the prostanoid pathway had been established in *P. monodon*, we examined whether there is a correlation between prostanoid biosynthesis and shrimp ovary development. In wild *P. monodon* broodstock, the concentrations of PGE<sub>2</sub> decreased from stage I to stage III, but abruptly increased in stage IV ovaries (Figure 7A). This is inconsistent with the trend found in domesticated shrimp, in which the amounts of PGE<sub>2</sub> gradually increased during ovary development [21]. The discrepancy between the two studies may be the result of different shrimp genetic background and/or dietary intake. Interestingly, the PGE<sub>2</sub> concentrations were highest at stage IV ovaries in both wild and domesticated shrimp, but the significance of this observation has yet to be explored. When the gene expression of each *PmPGES* isoform was compared to the concentration of PGE<sub>2</sub> found in each ovary stage, we observed no correlation between the two parameters. Furthermore, the lowest amount of *PmPGES* transcripts was found in stage IV ovaries, making it unlikely that the PGE<sub>2</sub> biosynthesis is regulated at the transcriptional level in this organ.

Unlike PGE<sub>2</sub>, the amount of PGF<sub>2α</sub> steadily decreased with increasing ovary stages, which followed the same trend observed in *M. japonicus* [10]. Similarly, the *PmPGFS* gene expression also decreased as the ovaries matured, making *PmPGFS* gene expression and PGF<sub>2α</sub> concentration inversely correlated with shrimp ovarian development. Together, our findings suggest that lowered *PGFS* gene expression resulted in decreasing concentrations of PGF<sub>2α</sub> during shrimp ovarian maturation process. Therefore, we propose that the PGF<sub>2α</sub> biosynthesis may be involved in the *P. monodon* ovarian development.



**Figure 8. Relative expression levels of *PmPGES* and *PmPGFS* genes in each ovary stage.** Wild broodstock from the Andaman Sea (N=27) were captured and dissected to obtain ovary samples used in the real-time PCR analysis. Each graph represents the average copy number of prostaglandin biosynthesis gene transcripts normalized against *EF1α* in each ovary stage. (A) *PmPGES1*, (B) *PmPGES2*, (C) *PmPGES3* and (D) *PmPGFS*. Error bars show standard deviations and asterisks indicate significant changes between stages ( $p < 0.05$ ).

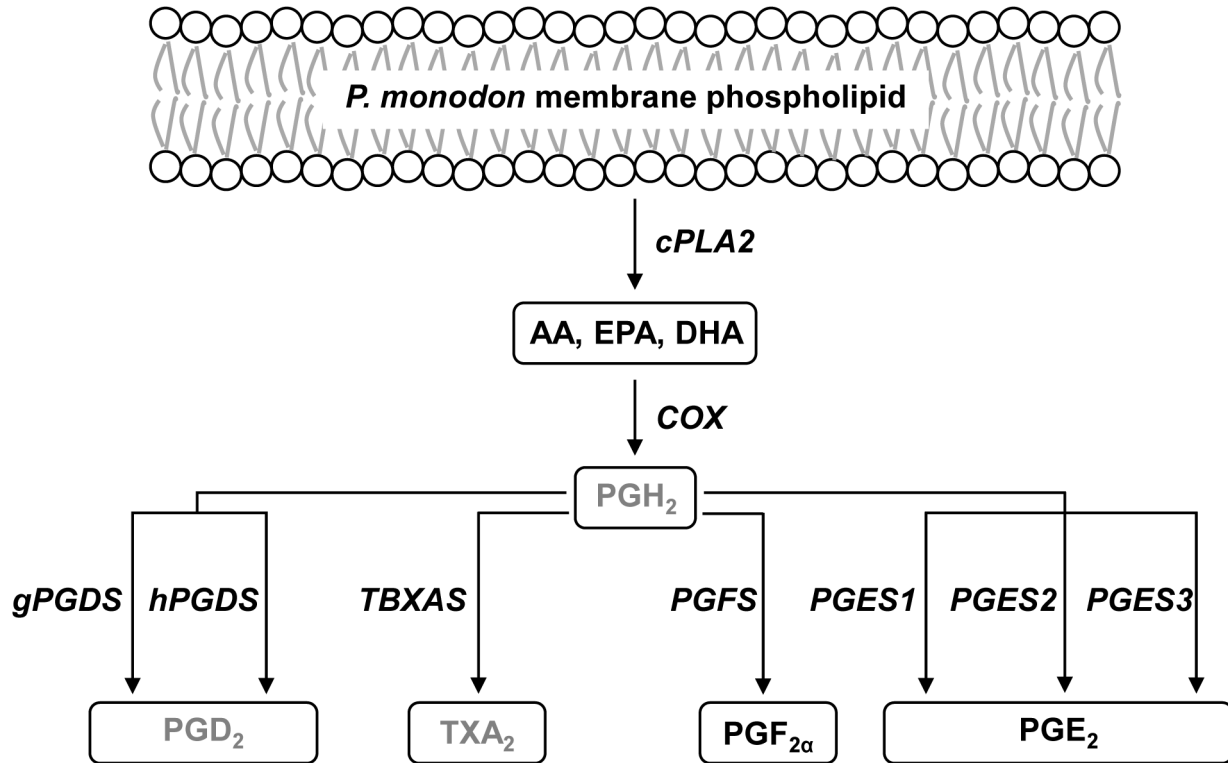
doi: 10.1371/journal.pone.0076934.g008

In conclusion, a prostanoid pathway in *P. monodon* is proposed based on the identification of nine prostanoid biosynthesis genes, two prostaglandins and three prostanoid precursors (Figure 9). In addition, PGF<sub>2α</sub> biosynthesis may play an important role in *P. monodon* ovarian maturation because PGF<sub>2α</sub> concentration and *PmPGFS* gene expression declined as the ovarian development progressed. Collectively, our knowledge of the *P. monodon* prostanoid pathway may lead to future applications in the black tiger shrimp aquaculture industry. More importantly, the identification of the *P. monodon* prostanoid biosynthesis genes also suggests the conservation of the prostanoid pathway between marine crustaceans and mammals.

## Materials and Methods

### Collection of shrimp samples

Wild female *P. monodon* broodstock ( $n = 25$ ) were collected from the Andaman Sea, Thailand. The weight and length of broodstock were measured and recorded prior to dissection. Shrimp ovaries were dissected, weighed and either subjected to metabolite extraction or flash frozen in liquid nitrogen and stored at  $-80^{\circ}\text{C}$  for RNA extraction. The gonadosomatic index (GSI) of each shrimp was calculated using the following equation: ovarian weight/body weight  $\times 100$ . Ovarian developmental stages were assigned according to GSI, separating the broodstock into stage I (GSI  $< 1.5$ ), stage II (GSI = 2-4), stage III (GSI  $> 4-6$ ) and stage IV (GSI  $> 6$ ) [21].



**Figure 9. The proposed prostanoid biosynthesis pathway in *P. monodon*.** PUFAs, prostaglandins and full-length prostanoid biosynthesis genes identified in this study (black) were used to outline the *P. monodon* prostanoid pathway based on the previously published pathway in mammals. Prostanoids that have yet to be identified in *P. monodon* are shown in gray.

doi: 10.1371/journal.pone.0076934.g009

### Extraction of prostaglandins from shrimp tissues

Tissue homogenates underwent extraction twice with an equal volume of ethyl acetate. The solvent phases were then pooled together and dried under vacuum. Afterward, the dried crude extract was dissolved in 5% methanol. The solution was filtered to remove insoluble material before being loaded onto a 6-ml C18 SPE cartridge (VertiPak™, Vertical Chromatography, Co., Ltd., Thailand), which was previously washed with 10 ml methanol and 10 ml water. Columns were then washed with 10 ml water, 4 ml hexane, and again with 10 ml water, before being eluted with 10 ml ethyl acetate. The eluate was then evaporated and dissolved in ethanol for subsequent HPLC analysis.

### Identification of PUFAs and prostaglandins by RP-HPLC and mass spectrometry

Shrimp tissue extracts were separated by RP-HPLC using an Acclaim® 120 C18 column (3 μm, 4.6 mm x 150 mm; DIONEX Ltd., Surrey, UK) and a gradient mobile system consisting of acetonitrile (ACN): water: acetic acid (30:70:0.01) to 100% ACN in 35 min, with the flow rate of 0.8 ml/min. Resulting peaks were detected using the DIONEX Ultimate 3000 diode-array detector (DIONEX Ltd.). For RP-HPLC/MS analysis, samples were analyzed using the Agilent 1200 series LC system (Agilent Technologies Inc., Santa Clara, CA, USA)

coupled with the microTOF mass spectrometer and operated with HyStar version 3.2 (Bruker Daltonics Inc., Billerica, MA, USA).

### RNA extraction and cDNA synthesis

Shrimp organs were homogenized and subjected to total RNA extraction using the Trizol reagent (Invitrogen, California, USA). mRNA was purified from total RNA using the Oligotex mRNA Mini Kit (QIAGEN, Maryland, USA). First strand cDNA was synthesized using the RevertAid™ First Strand cDNA Synthesis Kit with oligo (dT)<sub>18</sub> primer (Fermentas, Maryland, USA) according to the manufacturer's instructions.

### Gene amplification

Initial PCR fragments were obtained using primers based on short gene sequences from The Black Tiger Shrimp EST Project at <http://pmonodon.biotech.or.th> [26] and the Marine Genomics Project at <http://www.marinegenomics.org> [24]. 5'- and 3'-RACE-PCR were performed using the Advantage™ 2 PCR kit (Clontech, California, USA) and the Smart™ RACE cDNA amplification kit (Clontech). All PCR products were cloned into the pTZ57R/T vector (Fermentas), transformed into DH5α *E. coli*, and submitted for DNA sequencing (1<sup>st</sup>-BASE, Malaysia). Identities of the obtained cDNA sequences were verified by TBLASTX analysis [52]. Multiple sequence

alignment of prostaglandin biosynthesis genes were performed using CLUSTALX [53]. Rooted phylogenetic tree with branch length were performed using CLUSTALW [53]. Protein domains were predicted using Conserved Domain Architecture Retrieval Tool (CDART - <http://www.ncbi.nlm.nih.gov/Structure/lexington/lexington.cgi>) [54].

### Quantitative real-time PCR analysis

Quantitative real-time PCR analysis was performed using the SsoFast™ EvaGreen® Supermix (Bio-Rad, California, USA) according to the manufacturer's instructions. Amounts of prostanoid biosynthesis gene transcripts relative to that of the house-keeping gene elongation factor 1 $\alpha$  (EF1 $\alpha$ ) were obtained using the standard curve method [55]. The specificity of the PCR product was confirmed by agarose gel electrophoresis and melting curve analysis performed from 55 °C to 95 °C with a continuous fluorescent reading at 0.5 °C increments.

### Identification of shrimp PGE<sub>2</sub> and PGF<sub>2 $\alpha$</sub> by enzyme immunoassay (EIA)

Stage IV shrimp ovaries were harvested and homogenized in Hank's Balanced Salt Solution (HBSS) with an osmolarity of 720 mmol/kg (Sigma-Aldrich Inc., Missouri, USA). For the *in vitro* PGE<sub>2</sub> synthesis assay, ovary homogenates were incubated in a rotary shaker with 25  $\mu$ M AA at 28 °C, 200 rpm and collected at 0, 30, 60, 120, 240, and 360 minutes post-incubation. The homogenates were centrifuged at 12,000  $\times$  g for 2 min at 4 °C and the amounts of PGE<sub>2</sub> and PGF<sub>2 $\alpha$</sub>  in the supernatant were estimated using the prostaglandin E<sub>2</sub> EIA kit – Monoclonal and prostaglandin F<sub>2 $\alpha$</sub>  EIA kit (Cayman Chemical, Michigan, USA).

### Statistical analysis

Statistical significant was assessed in this study using the T-test with two samples assuming equal variances ( $P < 0.05$ ).

### Supporting Information

**Figure S1. Schematic representation of domain types and positions on each putative *P. monodon* prostanoid biosynthesis enzyme.** Prostanoid biosynthesis gene sequences were submitted for the CDART analysis for domain prediction. Solid lines represent the total length of each predicted protein, while ovals and squares denote the conserved domains. C2 domain was first identified in

phosphokinase C. TRX is thioredoxin-like superfamily domain. GST\_C is glutathione transferase family, C-terminal alpha helical domain. MAPEG is Membrane-Associated Protein involved in Eicosanoid and Glutathione metabolism domain. EGF\_CA is calcium-binding, EGF-like domain. An\_peroxidase-like is animal heme peroxidases and related protein. (TIF)

**Figure S2. HPLC analysis and mass spectra of prostanoid precursors in shrimp ovary extract.** Ovaries from 5 wild broodstock were homogenized in HBSS, pooled together, and incubated at 28 °C, 200 rpm for 1 h. The homogenate was extracted as described in materials and methods. The extract was then subjected to analysis by RP-HPLC and mass spectrometry. RP-HPLC elution profiles of commercially available prostanoid standards (A) and prostanoid precursors found in ovary homogenate (B) was obtained at 200 nm wavelength. Subsequent mass spectrometry analysis of prostanoid precursors in ovary homogenate revealed the mass spectra of EPA (C), DHA (D) and AA (E). (TIF)

**Figure S3. Phylogenetic trees constructed from *PmPGES1* and related sequences from vertebrates and invertebrates.** Predicted amino acid sequences from various organisms were obtained from GenBank and the Marine Genomics Project. Sequences were aligned using CLUSTALW multiple sequence alignment program and the rooted phylogenetic tree with branch length (UPGMA) were constructed. (TIF)

### Acknowledgements

We would like to give our thanks to Dr. Sirawut Klinbunga for his valuable suggestion at the beginning of this project, Dr. Rungnapa Leelatanawit for her expertise in shrimp dissection, and Dr. Philip Shaw for his constructive comments on the manuscript.

### Author Contributions

Conceived and designed the experiments: WW KK VV. Performed the experiments: WW PT PD KD DP VV. Analyzed the data: WW PT PD. Contributed reagents/materials/analysis tools: WW PT PD. Wrote the manuscript: WW.

### References

- Rowley AF, Vogan CL, Taylor GW, Clare AS (2005) Prostaglandins in non-insectan invertebrates: recent insights and unsolved problems. *J Exp Biol* 208: 3-14. doi:10.1242/jeb.01275. PubMed: 15601872.
- Stanley DW, Howard RW (1998) The Biology of Prostaglandins and Related Eicosanoids in Invertebrates: Cellular, Organismal and Ecological Actions. *Am Zool* 38: 369-381.
- Stanley D (2006) Prostaglandins and other eicosanoids in insects: biological significance. *Annu Rev Entomol* 51: 25-44. doi:10.1146/annurev.ento.51.110104.151021. PubMed: 16332202.
- Funk CD (2001) Prostaglandins and leukotrienes: advances in eicosanoid biology. *Science* 294: 1871-1875. doi:10.1126/science.294.5548.1871. PubMed: 11729303.
- Smith WL, Marnett LJ (1991) Prostaglandin endoperoxide synthase: structure and catalysis. *Biochim Biophys Acta* 1083: 1-17. doi: 10.1016/0005-2760(91)90119-3. PubMed: 1903304.
- Smith WL, Marnett LJ, DeWitt DL (1991) Prostaglandin and thromboxane biosynthesis. *Pharmacol Ther* 49: 153-179. doi: 10.1016/0163-7258(91)90054-P. PubMed: 1905023.
- Xu XL, Ji WJ, Castell JD, O'Dor RK (1994) Influence of dietary lipid sources on fecundity, egg hatchability and fatty acid composition of Chinese prawn (*Penaeus chinensis*) broodstock. *Aquaculture* 119: 359-370. doi:10.1016/0044-8486(94)90300-X.
- Gonzalez-Felix M, Perez-Velazquez M, Quintero-Alvarez J (2009) Effect of Various Dietary Levels of Docosahexaenoic and Arachidonic

- Acids and Different n-3/n-6 Ratios on Biological Performance of Pacific White Shrimp, *Litopenaeus vannamei*, Raised in Low Salinity. *J World Aquacult Soc* 40: 194-206. doi:10.1111/j.1749-7345.2009.00242.x.
9. Ravid T, Tietz A, Khayat M, Boehm E, Michelis R et al. (1999) Lipid accumulation in the ovaries of a marine shrimp *Penaeus semisulcatus* (de haan). *J Exp Biol* 202(13): 1819-1829.
  10. Tahara D, Yano I (2004) Maturation-related variations in prostaglandin and fatty acid content of ovary in the kuruma prawn (*Marsupenaeus japonicus*). *Comp Biochem Physiol A Mol Integr Physiol* 137: 631-637. doi:10.1016/j.cbpb.2003.12.005. PubMed: 15123170.
  11. Muriana FJ, Ruiz-Gutierrez V, Blaya JA, Bolufer J (1995) Phospholipid fatty acid composition of hepatopancreatic brush-border membrane vesicles from the prawn *Penaeus japonicus*. *Biochimie* 77: 190-193. doi:10.1016/0300-9084(96)8124-7. PubMed: 7647111.
  12. Chansela P, Goto-Inoue N, Zaima N, Hayasaka T, Sroyraya M et al. (2012) Composition and localization of lipids in *Penaeus merguensis* ovaries during the ovarian maturation cycle as revealed by imaging mass spectrometry. *PLOS ONE* 7: e33154. doi:10.1371/journal.pone.0033154. PubMed: 22432001.
  13. Meunpol O, Meejing P, Piyatiratitvorakul S (2005) Maturation diet based on fatty acid content for male *Penaeus monodon* (Fabricius) broodstock. *Aquacult Res* 36: 1216-1225. doi:10.1111/j.1365-2109.2005.01342.x.
  14. Huang J-H, Jiang S-G, Lin H-Z, Zhou F-L, Ye L (2008) Effects of dietary highly unsaturated fatty acids and astaxanthin on the fecundity and lipid content of pond-reared *Penaeus monodon* (Fabricius) broodstock. *Aquacult Res* 39: 240-251. doi:10.1111/j.1365-2109.2007.01868.x.
  15. Hampson AJ, Rowley AF, Barrow SE, Steadman R (1992) Biosynthesis of eicosanoids by blood cells of the crab, *Carcinus maenas*. *Biochim Biophys Acta* 1124: 143-150. doi:10.1016/0005-2760(92)90090-1. PubMed: 1543736.
  16. Kuley E, Ozoğul F, Ozoğul Y, Olgunoglu AI (2008) Comparison of fatty acid and proximate compositions of the body and claw of male and female blue crabs (*Callinectes sapidus*) from different regions of the Mediterranean coast. *Int J Food Sci Nutr* 59: 573-580. doi:10.1080/09637480701451201. PubMed: 19382333.
  17. Kashiwagi T, Meyer-Rochow VB, Nishimura K, Eguchi E (2000) Light activation of phospholipase A2 in the photoreceptor of the crayfish (*Procambarus clarkii*). *Acta Neurobiol Exp Wars* 60: 9-16. PubMed: 10769925.
  18. Spaziani EP, Hinsch GW, Edwards SC (1993) Changes in prostaglandin E2 and F2 alpha during vitellogenesis in the Florida crayfish *Procambarus paeninsulanus*. *J Comp Physiol B* 163: 541-545. doi:10.1007/BF00302112. PubMed: 8151012.
  19. Spaziani EP, Hinsch GW, Edwards SC (1995) The effect of prostaglandin E2 and prostaglandin F2 alpha on ovarian tissue in the Florida crayfish *Procambarus paeninsulanus*. *Prostaglandins* 50: 189-200. PubMed: 8848543.
  20. Reddy PS, Reddy PR, Nagaraju GP (2004) The synthesis and effects of prostaglandins on the ovary of the crab *Oziotelphusa senex senex*. *Gen Comp Endocrinol* 135: 35-41. doi:10.1016/j.ygcen.2003.08.002. PubMed: 14644642.
  21. Preechaphol R, Klinbunga S, Khamnamtong B, Menasveta P (2010) Isolation and characterization of genes functionally involved in ovarian development of the giant tiger shrimp *Penaeus monodon* by suppression subtractive hybridization (SSH). *Genet Mol Biol* 33: 676-685. doi:10.1590/S1415-47572010000400014. PubMed: 21637577.
  22. Heckmann LH, Sibly RM, Timmermans MJ, Callaghan A (2008) Outlining eicosanoid biosynthesis in the crustacean *Daphnia*. *Front Zool* 5: 11. doi:10.1186/1742-9994-5-11. PubMed: 18625039.
  23. Varvas K, Kurg R, Hansen K, Järving R, Järving I et al. (2009) Direct evidence of the cyclooxygenase pathway of prostaglandin synthesis in arthropods: genetic and biochemical characterization of two crustacean cyclooxygenases. *Insect Biochem Mol Biol* 39: 851-860. doi:10.1016/j.ibmb.2009.10.002. PubMed: 19854273.
  24. McKillen DJ, Chen YA, Chen C, Jenny MJ, Trent HF 3rd et al. (2005) Marine genomics: a clearing-house for genomic and transcriptomic data of marine organisms. *BMC Genomics* 6: 34. doi:10.1186/1471-2164-6-34. PubMed: 15760464.
  25. Campbell EM, Pert CC, Bowman AS (2009) RNA-interference methods for gene-knockdown in the sea louse, *Lepeophtheirus salmonis*: studies on a putative prostaglandin E synthase. *Parasitology* 136: 867-874. doi:10.1017/S0031182009990357. PubMed: 19493370.
  26. Tassanakajon A, Klinbunga S, Paunglarp N, Rimphanitchayakit V, Udomkit A et al. (2006) *Penaeus monodon* gene discovery project: the generation of an EST collection and establishment of a database. *Gene* 384: 104-112. doi:10.1016/j.gene.2006.07.012. PubMed: 16945489.
  27. Jakobsson PJ, Thorén S, Morgenstern R, Samuelsson B (1999) Identification of human prostaglandin E synthase: a microsomal, glutathione-dependent, inducible enzyme, constituting a potential novel drug target. *Proc Natl Acad Sci U S A* 96: 7220-7225. doi:10.1073/pnas.96.13.7220. PubMed: 10377395.
  28. Kudo I, Murakami M (2005) Prostaglandin E synthase, a terminal enzyme for prostaglandin E2 biosynthesis. *J Biochem Mol Biol* 38: 633-638. doi:10.5483/BMBRep.2005.38.6.633. PubMed: 16336776.
  29. Sjögren T, Nord J, Ek M, Johansson P, Liu G et al. (2013) Crystal structure of microsomal prostaglandin E2 synthase provides insight into diversity in the MAPEG superfamily. *Proc Natl Acad Sci U S A* 110: 3806-3811. doi:10.1073/pnas.1218504110. PubMed: 23431194.
  30. Huang X, Yan W, Gao D, Tong M, Tai HH et al. (2006) Structural and functional characterization of human microsomal prostaglandin E synthase-1 by computational modeling and site-directed mutagenesis. *Bioorg Med Chem* 14: 3553-3562. doi:10.1016/j.bmc.2006.01.010. PubMed: 16439136.
  31. Parent J, Chapdelaine P, Fortier MA (2005) Molecular cloning and tissue distribution of microsomal-1 and cytosolic prostaglandin E synthases in macaque. *Prostaglandins Other Lipid Mediat* 78: 27-37. doi:10.1016/j.prostaglandins.2005.02.005. PubMed: 16303602.
  32. Murakami M, Naraba H, Tanioka T, Semmyo N, Nakatani Y et al. (2000) Regulation of Prostaglandin E2 biosynthesis by Inducible Membrane-associated Prostaglandin E2 synthase that Acts in Concert with Cyclooxygenase-2. *J Biol Chem* 275: 32783-32792. doi:10.1074/jbc.M003505200. PubMed: 10869354.
  33. Murakami M, Nakatani Y, Tanioka T, Kudo I (2002) Prostaglandin E synthase. *Prostaglandins Other Lipid Mediat* 68-69: 383-399. doi:10.1016/S0090-6980(02)00043-6. PubMed: 12432931.
  34. Tanikawa N, Ohmiya Y, Ohkubo H, Hashimoto K, Kangawa K et al. (2002) Identification and Characterization of a Novel Type of Membrane-Associated Prostaglandin E Synthase. *Biochem Biophys Res Commun* 291: 884-889. doi:10.1006/bbrc.2002.6531. PubMed: 11866447.
  35. Watanabe K, Ohkubo H, Niwa H, Tanikawa N, Koda N et al. (2003) Essential 110Cys in active site of membrane-associated prostaglandin E synthase-2. *Biochem Biophys Res Commun* 306: 577-581. doi:10.1016/S0006-291X(03)01025-8. PubMed: 12804604.
  36. Tanioka T, Nakatani Y, Semmyo N, Murakami M, Kudo I (2000) Molecular identification of cytosolic prostaglandin E2 synthase that is functionally coupled with cyclooxygenase-1 in immediate prostaglandin E2 biosynthesis. *J Biol Chem* 275: 32775-32782. doi:10.1074/jbc.M003504200. PubMed: 10922363.
  37. Kobayashi T, Nakatani Y, Tanioka T, Tsujimoto M, Nakajo S et al. (2004) Regulation of cytosolic prostaglandin E synthase by phosphorylation. *Biochem J* 381: 59-69. doi:10.1042/BJ20040118. PubMed: 15040786.
  38. Watanabe K, Yoshida R, Shimizu T, Hayaishi O (1985) Enzymatic formation of prostaglandin F2 alpha from prostaglandin H2 and D2. Purification and properties of prostaglandin F synthetase from bovine lung. *J Biol Chem* 260: 7035-7041. PubMed: 3858278.
  39. Liston TE, Roberts LJ (1985) Transformation of prostaglandin D2 to 9 alpha, 11 beta-(15S)-trihydroxyprosta-(5Z,13E)-dien-1-oic acid (9 alpha, 11 beta-prostaglandin F2): a unique biologically active prostaglandin produced enzymatically in vivo in humans. *Proc Natl Acad Sci USA* 82: 6030-6034. doi:10.1073/pnas.82.18.6030. PubMed: 3862115.
  40. Watanabe K, Iguchi Y, Iguchi S, Arai Y, Hayaishi O et al. (1986) Stereospecific conversion of prostaglandin D2 to (5Z,13E)-(15S)-9 alpha-11 beta,15-trihydroxyprosta-5,13-dien-1-oic acid (9 alpha,11 beta-prostaglandin F2) and of prostaglandin H2 to prostaglandin F2 alpha by bovine lung prostaglandin F synthase. *Proc Natl Acad Sci USA* 83: 1583-1587. doi:10.1073/pnas.83.6.1583. PubMed: 3456602.
  41. Suzuki-Yamamoto T, Nishizawa M, Fukui M, Okuda-Ashitaka E, Nakajima T et al. (1999) cDNA cloning, expression and characterization of human prostaglandin F synthase. *FEBS Lett* 462: 335-340. doi:10.1016/S0014-5793(99)01551-3. PubMed: 10622721.
  42. Wacławik A, Rivero-Muller A, Blitek A, Kaczmarek MM, Broknen LJ et al. (2006) Molecular cloning and spatiotemporal expression of prostaglandin F synthase and microsomal prostaglandin E synthase-1 in porcine endometrium. *Endocrinology* 147: 210-221. PubMed: 16223862.
  43. Spaziani EP, Hinsch GW (1997) Variation in selected unsaturated fatty acids during vitellogenesis in the Florida crayfish *Procambarus paeninsulanus*. *Invertebr Reprod Dev* 32: 21-25. doi:10.1080/07924259.1997.9672600.
  44. Pagés M, Roselló J, Casas J, Gelpí E, Gualde N et al. (1986) Cyclooxygenase and lipoxigenase-like activity in *Drosophila melanogaster*. *Prostaglandins* 32: 729-740. PubMed: 3103173.

45. Bowman AS, Sauer JR, Zhu K, Dillwith JW (1995) Biosynthesis of salivary prostaglandins in the lone star tick, *Amblyomma americanum*. *Insect Biochem Mol Biol* 25: 735-741. doi: 10.1016/0965-1748(95)00013-L. PubMed: 7627205.
46. Sandee D, Sivanuntakorn S, Vichai V, Kramyu J, Kirtikara K (2008) Up-regulation of microsomal prostaglandin E synthase-1 in COX-1 and COX-2 knock-out mouse fibroblast cell lines. *Prostaglandins Other Lipid Mediat*, 88: 111–6. PubMed: 19114118.
47. Pedibhotla VK, Sarath G, Sauer JR, Stanley-Samuels DW (1995) Prostaglandin biosynthesis and subcellular localization of prostaglandin H synthase activity in the lone star tick, *Amblyomma americanum*. *Insect Biochem Mol Biol* 25: 1027-1039. doi: 10.1016/0965-1748(95)00039-X. PubMed: 8541884.
48. Gadelhak GG, Pedibhotla VK, Stanley-Samuels DW (1995) Eicosanoid biosynthesis by hemocytes from the tobacco hornworm, *Manduca sexta*. *Insect Biochem Mol Biol* 25: 743-749. doi: 10.1016/0965-1748(95)00014-M. PubMed: 7627206.
49. Brenner RR, Bernasconi AM (1987) The occurrence of arachidonic acid in *Triatoma infestans*. *Comp Biochem Physiol B* 87: 815-819. PubMed: 3117486.
50. Ragab A, Durand J, Bitsch C, Chap H, Rigaud M (1991) The lipxygenase pathway of arachidonic acid metabolism in reproductive tissues of the firebrat, *Thermobia domestica* (Thysanura). *Insect Biochem* 21: 321-326. doi:10.1016/0020-1790(91)90022-7.
51. Loher W, Ganjian I, Kubo I, Stanley-Samuels D, Tobe SS (1981) Prostaglandins: Their role in egg-laying of the cricket *Teleogryllus commodus*. *Proc Natl Acad Sci U S A* 78: 7835-7838. doi:10.1073/pnas.78.12.7835. PubMed: 16593135.
52. Altschul SF, Gish W, Miller W, Myers EW, Lipman DJ (1990) Basic local alignment search tool. *J Mol Biol* 215: 403-410. doi:10.1016/S0022-2836(05)80360-2. PubMed: 2231712.
53. Thompson JD, Higgins DG, Gibson TJ (1994) CLUSTAL W: improving the sensitivity of progressive multiple sequence alignment through sequence weighting, position-specific gap penalties and weight matrix choice. *Nucleic Acids Res* 22: 4673-4680. doi:10.1093/nar/22.22.4673. PubMed: 7984417.
54. Geer LY, Domrachev M, Lipman DJ, Bryant SH (2002) CDART: protein homology by domain architecture. *Genome Res* 12: 1619-1623. doi: 10.1101/gr.278202. PubMed: 12368255.
55. Leelatanawit R, Klanhui A, Uawisetwathana U, Karoonuthaisiri N (2012) Validation of reference genes for real-time PCR of reproductive system in the black tiger shrimp. *PLOS ONE* 7: e52677. doi:10.1371/journal.pone.0052677. PubMed: 23285145.