

RESEARCH ARTICLE

Open Access

Efficient and reproducible identification of mismatch repair deficient colon cancer: validation of the MMR index and comparison with other predictive models

Patrick Joost^{1,2*}, Pär-Ola Bendahl³, Britta Halvarsson⁴, Eva Rambech³ and Mef Nilbert^{3,5}

Abstract

Background: The identification of mismatch-repair (MMR) defective colon cancer is clinically relevant for diagnostic, prognostic and potentially also for treatment predictive purposes. Preselection of tumors for MMR analysis can be obtained with predictive models, which need to demonstrate ease of application and favorable reproducibility.

Methods: We validated the MMR index for the identification of prognostically favorable MMR deficient colon cancers and compared performance to 5 other prediction models. In total, 474 colon cancers diagnosed \geq age 50 were evaluated with correlation between clinicopathologic variables and immunohistochemical MMR protein expression.

Results: Female sex, age \geq 60 years, proximal tumor location, expanding growth pattern, lack of dirty necrosis, mucinous differentiation and presence of tumor-infiltrating lymphocytes significantly correlated with MMR deficiency. Presence of at least 4 of the MMR index factors identified MMR deficient tumors with 93% sensitivity and 76% specificity and showed favorable reproducibility with a kappa value of 0.88. The MMR index also performed favorably when compared to 5 other predictive models.

Conclusions: The MMR index is easy to apply and efficiently identifies MMR defective colon cancers with high sensitivity and specificity. The model shows stable performance with low inter-observer variability and favorable performance when compared to other MMR predictive models.

Keywords: Pathology, Colorectal cancer, Microsatellite instability, Mismatch repair, Prediction model

Background

Genomic destabilization is an intrinsic, tumor-promoting feature in most cancer cells. In colon cancer this is achieved through tumorigenic pathways related to chromosomal instability, CpG island methylation and mismatch repair (MMR) defects that cause microsatellite instability (MSI) [1]. The identification of MMR defective tumors provides prognostic information and identifies heritable cases linked to Lynch syndrome. MMR defective tumors are typically located proximal to the

splenic flexure and are overrepresented among young patients (mean 45 years) in Lynch syndrome and older patients (mean 75 years) in sporadic cases [2-7].

Morphologic characteristics of MMR deficient tumors include an expanding tumor growth pattern, poor and mucinous differentiation, a solid/medullary growth pattern, lack of "dirty necrosis" and lymphocytic reactions such as peritumoral lymphocyte infiltration, Crohn-like reactions and presence of tumor-infiltrating lymphocytes (TIL) [6,8-10]. Increasing evidence suggests that the identification of MMR deficient tumors provides clinically relevant information, but universal MMR screening has not yet gained widespread application in clinical practice [11-13].

Our study focuses on the 20% of the non-hereditary colon cancers with somatic *MLH1* promoter methylation

* Correspondence: patrickjoost@med.lu.se

¹Department of Pathology and Cytology, Helsingborg General Hospital, Helsingborg, Södra Vallgatan 5 SE-251 87 Helsingborg, Sweden

²Department of Pathology, Skane University Hospital, Clinical Science, Lund University, SE-221 85 Lund, Sweden

Full list of author information is available at the end of the article

that are associated with a favorable prognosis and a suggested poor response to 5-fluorouracil-based regimens [11-18]. A prescreening procedure that identifies tumors with a high likelihood of MMR deficiency could be clinically valuable for institutions that have not implemented universal assessment of MMR status. Several predictive models aimed at identifying tumors with an increased likelihood of MMR deficiency have been established (Table 1) [19-24]. These models have predominantly focused on the identification of Lynch syndrome tumors, whereas the MMR index and the RERtest6 model were developed in series that had a substantial contribution from sporadic MMR deficient tumors [20,24,25]. For such models to be implemented in the routine histopathologic work-up, the assessment should be easy to apply, i.e. preferentially be based on factors that can be evaluated on standard sections, and reproducible. We validated the MMR index in an independent series of 474 colon cancers and provide data on the reproducibility and

performance in comparison with 5 other MMR/MSI-predictive models.

Methods

Patients

All colon (n = 474) cancers from 462 patients (210 men and 252 women) who underwent surgery at the Helsingborg Hospital, Sweden between 2002 and 2006 were eligible for the study. None of the patients had a previous colorectal cancer diagnosis. In order to minimize the contribution from Lynch syndrome, patients diagnosed <50 years of age were excluded. Synchronous colon cancers were identified in 12 patients. The study was approved by the Lund University ethics committee.

Histopathologic evaluation

All available hematoxylin and eosin (H&E) stained slides were morphologically evaluated according to a standardized protocol by two independent investigators (B.H.

Table 1 Summary of clinicopathologic features evaluated in the different models to predict MMR deficiency

Model (reference)	MMR index [25]	MsPath [19,23]	PREDICT [22]	MSI probability score [21]	RERtest6 [20,24]
No. of variables	7	6	6	7	6
Sex	Female	-	-	-	-
Age (years)	≥60	<50	<50	<50	-
Tumor location	Proximal	Proximal	Proximal	Proximal	Proximal
Growth pattern	Expanding	-	-	-	Expanding
Dirty necrosis	Lack of	-	-	Lack of	-
Mucinous/signet-ring components	≥10%	≥50% (including medullary carcinoma)	Any component	Any component	Amount in %
Solid component	-	-	-	-	Amount in %
TIL	≥7 TIL/10 HPF	≥5 TIL/HPF (10 HPFs searched)	≥ 5TIL/HPF (10 HPF searched)	≥2 TIL/mean of 5 HPF	≥4TIL/HPF
Differentiation	-	Poorly differentiated	-	Well or poorly differentiated	-
Crohn-like reaction	-	≥4 nodules/LPF	-	≥3 nodules/section	≥3 nodules/LPF
Peritumoral lymphocytic reaction	-	-	Banding of lymphocytes beyond advancing edge	-	-
Increased stromal plasma cells	-	-	>25% plasma cells/stromal immune cells	-	-
Scoring system	No score, 7-factor index, cut-off ≥4	Score: cut-off ≥1	Score: cut-off ≥2.5; "Simplified PREDICT": no score, ≥2 features present	Score: cut-off ≥1 or ≥1.5	Score: cut-off <0.8
Sensitivity	92.3% (4 features of 7)	93%	96.9% (score ≥2.5)	92% (score 1)	78.0%
Specificity	75.3% (4 features of 7)	55%	76.6% (score ≥2.5)	46% (score 1)	93.4%
Method applied for determination of MMR deficiency	IHC (4 markers), <i>BRAF</i> mutation	MSI (10 markers) and IHC (4 markers); validation study: MSI (5 markers) and IHC (MLH1, MSH2), <i>BRAF</i> mutation	MSI (5 markers); validation cohort only 1 marker if age ≥75 years	MSI (4 markers)	MSI (11 markers)

Abbreviations: HPF high-power field, IHC immunohistochemistry, LPF low-power field, MMR mismatch repair, MSI microsatellite instability, TIL tumor-infiltrating lymphocytes.

and P.J.) who were blinded to the immunohistochemistry results as well as to the results from the other reviewer. The evaluators considered invasive tumor components and did not take intramucosal/early invasive tumor components into account [8,26]. Tumor location was classified as proximal/distal in relation to the splenic flexure [2]. Tumor stage was determined according to the American Joint Cancer Committee/Union Internationale Contre le Cancer (AJCC/UICC) staging system and the grade according to the WHO system [27]. Mucinous/signet-ring cell cancers were considered poorly differentiated. Growth pattern was classified as expanding if a continuous, rounded infiltration margin was found and as infiltrating if invading foci were identified [10]. Dirty necrosis was defined as the presence of cell detritus and inflammatory cells within the glandular lumina and was scored as present or absent [9]. A tumor was classified as mucinous or signet-ring cell cancer if more than 50% of the tumor area showed such differentiation [27]. Tumors with mucinous/ signet-ring cell components that encompassed 10-50% of the area but did not fulfill the criteria for mucinous/signet-ring cell tumors were classified as having a mucinous/signet-ring cell component [25]. TIL were identified on H&E-stained slides and defined as intraepithelial lymphocytes between tumor cells; they were scored as present if there were ≥ 7 TIL per 10 high-power fields (40 \times , field diameter 0.53 mm) [8,26].

Application of the MMR index

The MMR index includes the factors female sex, age ≥ 60 years, proximal tumor location, expanding growth pattern, lack of dirty necrosis, any mucinous/signet-ring cell differentiation (mucinous/signet-ring cell tumor or mucinous/signet-ring cell component) in $\geq 10\%$ of the tumor area and presence of TIL. The index was applied to all tumors in the series. As previously reported [25], the presence of ≥ 4 factors was chosen as the cut-off limit based on optimal sensitivity and specificity. All slides were evaluated by B.H., In addition, 200 randomly selected tumors were independently evaluated by P.J. for the assessment of reproducibility. Complete data were obtained for 189 tumors, which were included in the final evaluation of inter-observer reproducibility.

Immunohistochemical analysis

Fresh 4- μm sections were immunohistochemically stained using antibodies against MLH1 (clone G168-15, 1:50, BD PharMingen, San Diego, CA, USA or clone ES05, 1:100, Dako, Glostrup, Denmark), PMS2 (clone A16-4, 1:300, BD PharMingen), MSH2 (clone FE-11, 1:100, Calbiochem, La Jolla, CA, USA) and MSH6 (clone EPR3945, 1:100; Epitomics, Burlingame, CA, USA) using the EnVision™ (Dako, Glostrup, Denmark) detection kit [28]. MMR protein expression was evaluated without

knowledge of the results of the morphologic review and was classified as retained (presence of nuclear staining) or lost (loss of nuclear staining with retained staining in stromal, inflammatory or non-neoplastic epithelial cells).

Comparison with other predictive models

The MMR index results were compared with those from 5 other predictive models (Table 1), i.e. MsPath [19,23], PREDICT/simplified PREDICT [22], MSI probability score [21] and RERtest6 [20,24] in 200 randomly selected tumors, 20% ($n = 40$) of which were MMR deficient.

Statistical analysis

For statistical calculations, the software package Stata 12.1 (StataCorp. 2012, College Station, TX, USA) was used. The histopathologic variables were dichotomized and assigned equal weights. The association between MMR status and the other histopathologic factors was analyzed by means of contingency tables and Fisher's exact test. Patients with any missing value were excluded from the analysis ($n = 24$). A multiple logistic regression model that contained the 7 dichotomized clinicopathologic factors as covariates was fitted to determine the independent contribution of each factor at predicting MMR deficiency. These effects were summarized as odds ratios (OR) with 95% confidence intervals (CI). The sensitivity and specificity of the MMR index were calculated by means of a receiver operating characteristic (ROC) curve. Inter-observer variability was expressed using the chance-corrected measure of agreement kappa. The performance of the different models was evaluated by calculating the sensitivity, specificity, positive predictive value (PPV) and negative predictive value (NPV) and area under the ROC curve (AUC).

Results

MMR deficiency, defined as immunohistochemical loss of at least one MMR protein, was identified in 108/474 (22.8%) tumors. No tumors showed weak or reduced MMR protein staining. The MMR deficient tumors predominantly developed in women (74.8%), in the proximal colon (91.7%) and were diagnosed at a mean age of 76 (range 50–100) years (Table 2). MMR defects involved MLH1/PMS2 in 93 tumors, PMS2 in 1, MSH2/MSH6 in 5, MSH6 in 4, and MLH1/PMS2 and MSH6 in 5. This means that defects highly suggestive of Lynch syndrome (mutations in *MSH2* and *MSH6*) were identified in 14/474 (3%) cases.

Several morphologic features were overrepresented in MMR deficient tumors in comparison with MMR proficient tumors (Table 2). This applied to expanding growth pattern (73.8% *versus* 7.6%), lack of dirty necrosis (80.6% *versus* 26.1%), mucinous/signet-ring cell differentiation

Table 2 Distribution of clinicopathologic factors in relation to MMR status (n = 474)

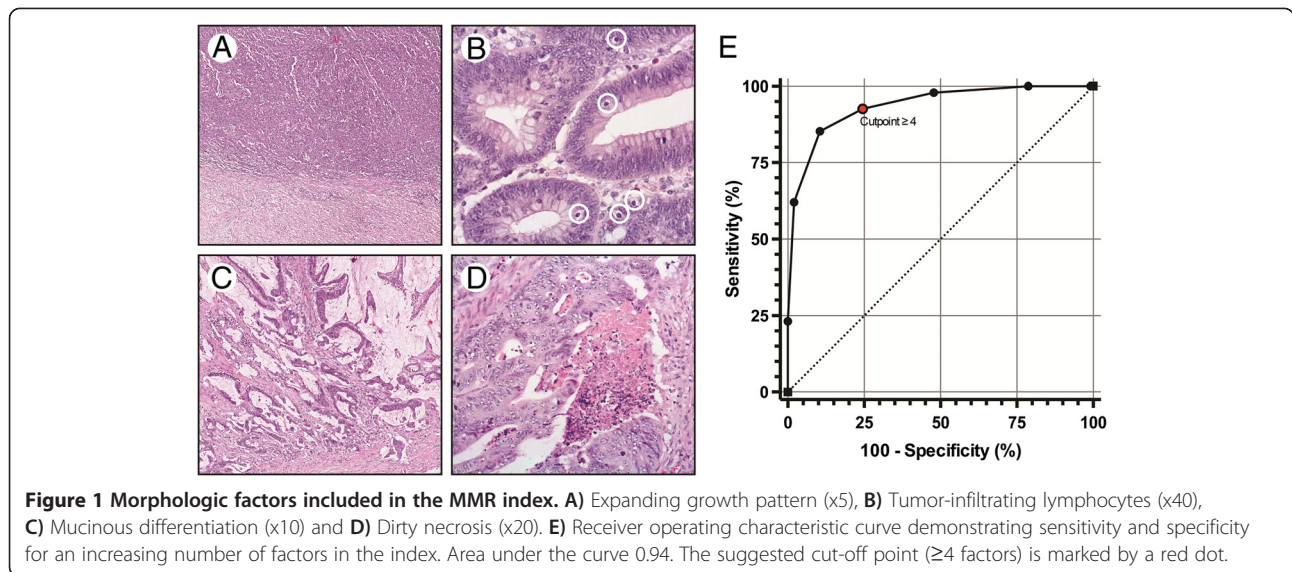
Factor		Frequency (%)			
		MMR deficient		MMR proficient	
Patients (n = 462)	Total number	103	(22.3)	359	(77.7)
Sex (n = 462)	Male	26	(25.2)	184	(51.3)
	Female	77	(74.8)	175	(48.7)
Age (n = 462)	Mean	76		74	
	Age ≥60	102	(99.0)	328	(91.4)
Tumors (n = 474)	Total number	108	(22.8)	366	(77.2)
pT stage (n = 450)	pT1	2	(1.9)	6	(1.7)
	pT2	10	(9.6)	37	(10.7)
	pT3	87	(83.7)	224	(64.8)
	pT4	5	(4.8)	79	(22.8)
pN stage (n = 461)	pN0	76	(73.1)	183	(51.2)
	pN1	23	(22.1)	107	(30.0)
	pN2	5	(4.8)	67	(18.8)
pM stage (n = 474)	pM1	1	(0.9)	10	(2.7)
Differentiation (n = 474)	Good/moderate	42	(38.9)	334	(91.3)
	Poor/no	66	(61.1)	32	(8.7)
Location (n = 473)	Proximal	99	(91.7)	173	(47.4)
	Distal	9	(8.3)	192	(52.6)
Growth pattern (n = 459)	Expanding	76	(73.8)	27	(7.6)
	Infiltrating	27	(26.2)	329	(92.4)
Dirty necrosis (n = 467)	Present	20	(19.4)	269	(73.9)
	Absent	83	(80.6)	95	(26.1)
Mucin/signet-ring differentiation (n = 473)	Present (>50%)	23	(21.3)	15	(4.1)
	Present (10-50%)	50	(46.3)	81	(22.2)
	Absent	35	(32.4)	269	(73.7)
TIL (n = 470)	Present	72	(66.7)	61	(16.9)
	Absent	36	(33.3)	301	(83.1)

Abbreviations: MMR mismatch repair, TIL tumor-infiltrating lymphocytes.

(67.6% versus 26.3%) and presence of TIL (66.7% versus 16.9%). The strongest predictive indicators of MMR deficiency were expanding growth pattern (OR 11.6; 95% CI 5.5-24.5), presence of TIL (OR 5.6; 95% CI 2.6-12.1), mucinous/signet-ring cell differentiation (OR 3.0; 95% CI 1.3-6.0) and lack of dirty necrosis (OR 3.0; 95% CI 1.3-7.0). Inter-observer agreement was 90%, which corresponds to a kappa value of 0.88. The kappa values for the individual histopathologic markers were 0.78 for TIL, 0.94 for mucinous/signet-ring cell components, 0.96 for lack of dirty necrosis and 0.97 for expanding growth pattern.

The MMR index was applied in 438 patients from whom complete data were available. In these patients, the presence of ≥4 factors identified MMR deficient colon cancers with 92.6% sensitivity and 75.5% specificity, corresponding to an ROC curve with an AUC of 0.94 (95% CI, 0.91-0.96) (Figure 1). Comparison with

other predictive models was performed in 200 randomly selected tumors, in which the MMR index – applied with a cut-off of ≥4 factors – resulted in an AUC of 0.83 (95% CI, 0.79-0.87) and identified MMR deficient tumors with 97.5% sensitivity and 69% specificity. The factors expanding growth pattern, TIL, mucinous/signet-ring cell differentiation and lack of dirty necrosis identified MMR deficient tumors with almost identical performance as identified in the original report of the MMR index [25]. The distribution of clinicopathologic features evaluated by the other models is supplementary table [see Additional file 1: Table S1]; the respective AUC values were 0.81 for PREDICT, 0.80 for RERtest6, 0.70 for MsPath and 0.77 for the MSI probability score. Sensitivities varied from 60% to 100% and specificities from 41% to 99% (Table 3). The performance of the MMR index was similar to that of the PREDICT/simplified



PREDICT models ($p = 0.38/p = 0.27$) and the RERtest6 model ($p = 0.42$), but was significantly better than that of the MsPath model ($p < 0.0001$) and the MSI probability score model ($p < 0.0001$ for a cut-off > 1 and $p < 0.01$ for a cut-off > 1.5).

Discussion

The strongest predictive indicators of MMR deficiency were an expanding growth pattern (OR 11.6), presence of TIL (OR 5.6), mucinous/signet-ring cell differentiation (OR 3.0) and lack of dirty necrosis (OR 3.0) (Table 3). In comparison to the series in which the MMR index was established, the age groups studied differed somewhat, but the histopathologic characteristics were observed at similar frequencies, i.e. 59-89% in the former study and 67-81% in the present series [25]. The predictive values

of the individual factors partly differed, but when combined into a MMR index, presence of ≥ 4 of the factors identified MMR defective tumors with similar sensitivity (93%) and specificity (75%) in the sample sets. Reproducibility was demonstrated through independent and blinded evaluation by two reviewers who identified MMR deficient tumors with a kappa value of 0.88. Hence, the model demonstrates stable performance, favorable prediction and is quick, cheap and easy to apply.

When compared with 5 other predictive models, the MMR index demonstrated better performance than the RERtest6 [20,24], MsPath [19,23] and the MSI probability score [21] models and comparable performance to the PREDICT/simplified PREDICT models [22] (Table 3). The MsPath, PREDICT and MSI probability scores all identified MMR deficient tumors with an equally

Table 3 Performance of the different prediction models for MMR (n = 200)

Model	Sensitivity (%)	Specificity (%)	PPV (%)	NPV (%)	AUC
MMR index	97.5	68.8	44.3	99.1	0.83
4 features present					
PREDICT	95.0	66.3	41.3	98.2	0.81
Score ≥ 2.5					
Simplified PREDICT	95.0	65.0	40.4	98.1	0.80
2 features present					
MsPath	100.0	40.6	29.6	100.0	0.70
Score ≥ 1					
MSI probability score	100.0	45.6	31.5	100.0	0.73
Score ≥ 1	97.5	56.3	35.8	98.9	0.77
Score ≥ 1.5					
RERtest6	60.0	99.4	96.0	90.8	0.80
Score < 0.8					

Abbreviations: AUC area under curve, MMR mismatch repair, MSI microsatellite instability, NPV negative predictive value, PPV positive predictive value.

favorable sensitivity, whereas the sensitivity of the RERtest6 model was clearly insufficient (60%) in our cohort. The MMR index identified 39/40 MMR deficient tumors and would have prompted the evaluation of MMR status in another 50 MMR proficient tumors. The number of MMR proficient tumors that would be included in testing with retained sensitivity was 54 for the PREDICT model, but it was considerably higher for the MSI probability score model (n = 70) and the MsPath (n = 95) model. With exception of the RERtest6 model, these algorithms have primarily been developed for the identification of Lynch syndrome tumors [21-23]. The MsPath, PREDICT and MSI probability score models therefore include age <50 years as one of the predictive variables, which means that comparison with the MMR index in our study was suboptimal given that the study only included cases diagnosed after age 50. The RERtest6 model was, however, developed without age restriction and has also been validated in independent tumor samples [20,24]. In our series, the RERtest6 model showed a high specificity but a low sensitivity; only 1 tumor that had been identified as MMR deficient was a false-positive, but 16/40 MMR deficient tumors escaped detection [see Additional file 1: Table S1].

MMR testing is commonly requested without prior selection in the 5% of colon cancers that develop before age 50 [29-31]. Our study thus focused on patients ≥50 years of age, 23% of whom had MMR deficient colon cancers with loss of MLH1/PMS2 in 86% of the cases. The consistent silencing of *MLH1* through promoter methylation has been suggested to lead to more pronounced histopathologic features than the variable MMR gene defects observed in Lynch syndrome tumors [6,15,32,33]. Despite our focus on a cohort over the age of 50, we identified immunohistochemical losses (of MSH2 and/or MSH6) suggestive of Lynch syndrome in 3% of the tumors. In particular, the contribution from MSH6 was substantial. *MSH6* mutations have been linked to an overall lower risk of colon cancer, less striking family history, higher age at onset and less pronounced tumor morphology, which implies that many cases may escape detection [34,35]. Indeed, the 4 cases with isolated loss of MSH6 and the 5 cases with combined loss of MLH1/PMS2 and MSH6 developed after age 70. Though these cases are not likely to influence the performance of the MMR index, the observation indicates that Lynch syndrome should be considered also among somewhat older patients. The MMR index is not intended for identification of Lynch syndrome cases and has not been validated in younger individuals. However, 11 of 14 MSH2/MSH6 deficient tumors in our series as well as all 7 MSH2/MSH6 deficient tumors reported by Halvarsson et al. [25] fulfilled the criteria and would have been detected by the MMR index.

Conclusions

In summary, the MMR index provides a validated tool to identify the MMR deficient subset of colon cancers. Study limitations include assessment of MMR status solely based on immunohistochemical staining and inclusion of a small number of presumed Lynch syndrome tumors, which were not further genetically characterized. The impact from these shortcomings is judged to be minor and also mimics applicability in clinical routine. The MMR index does, in addition to factors evaluated as part of the routine diagnostic work-up (i.e. sex, age, tumor location and occurrence of mucinous differentiation) requires added evaluation only of growth pattern, dirty necrosis and TIL. The simple application and favorable reproducibility represent key advantages towards its clinical implementation for identification of individuals with a favorable prognosis who may be spared adjuvant chemotherapy.

Additional file

Additional file 1: Table S1. Distribution of clinicopathologic features in the different prediction models for MMR (n = 200).

Competing interests

The authors declare that they have no competing interests.

Authors' contributions

PJ, POB, BH and MN participated in the design of the study. PJ and BH performed data acquisition and pathologic assessment. ER performed all immunohistochemical staining. POB and PJ performed the statistical analysis. PJ and MN drafted the manuscript. POB, BH and ER revised the manuscript. All authors read and approved the final manuscript.

Acknowledgments

The study was financially supported by the Swedish Cancer Fund, the Swedish Research Council, the Thelma Zoëga's Fund for Medical Research, the Gunnar Nilsson Cancer Foundation and the Berta Kamprad Cancer Foundation.

Author details

¹Department of Pathology and Cytology, Helsingborg General Hospital, Helsingborg, Södra Vallgatan 5 SE-251 87 Helsingborg, Sweden. ²Department of Pathology, Skane University Hospital, Clinical Science, Lund University, SE-221 85 Lund, Sweden. ³Department of Oncology, Institute of Clinical Sciences, Lund University, SE-221 85 Lund, Sweden. ⁴Aleris Medilab, Nytorpsvägen 28-32, SE-183 53 Täby, Sweden. ⁵Clinical Research Centre, Hvidovre University Hospital, Copenhagen University, Kettegaard's Allé 30, DK-2650 Hvidovre, Denmark.

Received: 30 October 2012 Accepted: 13 December 2013

Published: 17 December 2013

References

1. Ogino S, Goel A: Molecular classification and correlates in colorectal cancer. *J Mol Diagn* 2008, **10**(1):13-27.
2. Jass JR, Do KA, Simms LA, Iino H, Wynter C, Pillay SP, Searle J, Radford-Smith G, Young J, Leggett B: Morphology of sporadic colorectal cancer with DNA replication errors. *Gut* 1998, **42**(5):673-679.
3. Kim H, Jen J, Vogelstein B, Hamilton SR: Clinical and pathological characteristics of sporadic colorectal carcinomas with DNA replication errors in microsatellite sequences. *Am J Pathol* 1994, **145**(1):148-156.

4. Kakar S, Burgart LJ, Thibodeau SN, Rabe KG, Petersen GM, Goldberg RM, Lindor NM: **Frequency of loss of hMLH1 expression in colorectal carcinoma increases with advancing age.** *Cancer* 2003, **97**(6):1421–1427.
5. Malkhosyan SR, Yamamoto H, Piao Z, Perucho M: **Late onset and high incidence of colon cancer of the mutator phenotype with hypermethylated hMLH1 gene in women.** *Gastroenterology* 2000, **119**(2):598.
6. Young J, Simms LA, Biden KG, Wynter C, Whitehall V, Karamatic R, George J, Goldblatt J, Walpole I, Robin SA, et al: **Features of colorectal cancers with high-level microsatellite instability occurring in familial and sporadic settings: parallel pathways of tumorigenesis.** *Am J Pathol* 2001, **159**(6):2107–2116.
7. Lynch HT, Smyrk TC, Watson P, Lanspa SJ, Lynch JF, Lynch PM, Cavalieri RJ, Boland CR: **Genetics, natural history, tumor spectrum, and pathology of hereditary nonpolyposis colorectal cancer: an updated review.** *Gastroenterology* 1993, **104**(5):1535–1549.
8. Smyrk TC, Watson P, Kaul K, Lynch HT: **Tumor-infiltrating lymphocytes are a marker for microsatellite instability in colorectal carcinoma.** *Cancer* 2001, **91**(12):2417–2422.
9. Greenson JK, Bonner JD, Ben-Yzhak O, Cohen HI, Miselevich I, Resnick MB, Trougouboff P, Tomsho LD, Kim E, Low M, et al: **Phenotype of microsatellite unstable colorectal carcinomas: well-differentiated and focally mucinous tumors and the absence of dirty necrosis correlate with microsatellite instability.** *Am J Surg Pathol* 2003, **27**(5):563–570.
10. Jass JR, Ajioka Y, Allen JP, Chan YF, Cohen RJ, Nixon JM, Radjokovic M, Restall AP, Stables SR, Zwi LJ: **Assessment of invasive growth pattern and lymphocytic infiltration in colorectal cancer.** *Histopathology* 1996, **28**(6):543–548.
11. Des Guetz G, Schischmanoff O, Nicolas P, Perret GY, Morere JF, Uzzan B: **Does microsatellite instability predict the efficacy of adjuvant chemotherapy in colorectal cancer? a systematic review with meta-analysis.** *Eur J Cancer* 2009, **45**(10):1890–1896.
12. Sargent DJ, Marsoni S, Monges G, Thibodeau SN, Labianca R, Hamilton SR, French AJ, Kabat B, Foster NR, Torri V, et al: **Defective mismatch repair as a predictive marker for lack of efficacy of fluorouracil-based adjuvant therapy in colon cancer.** *J Clin Oncol* 2010, **28**(20):3219–3226.
13. Ribic CM, Sargent DJ, Moore MJ, Thibodeau SN, French AJ, Goldberg RM, Hamilton SR, Laurent-Puig P, Gryfe R, Shepherd LE, et al: **Tumor microsatellite-instability status as a predictor of benefit from fluorouracil-based adjuvant chemotherapy for colon cancer.** *N Engl J Med* 2003, **349**(3):247–257.
14. Jover R, Zapater P, Castells A, Llor X, Andreu M, Cubiella J, Balaguer F, Sempere L, Xicola RM, Bujanda L, et al: **The efficacy of adjuvant chemotherapy with 5-fluorouracil in colorectal cancer depends on the mismatch repair status.** *Eur J Cancer* 2009, **45**(3):365–373.
15. Popat S, Hubner R, Houlston RS: **Systematic review of microsatellite instability and colorectal cancer prognosis.** *J Clin Oncol* 2005, **23**(3):609–618.
16. Samowitz WS, Curtin K, Ma KN, Schaffer D, Coleman LW, Leppert M, Slattey ML: **Microsatellite instability in sporadic colon cancer is associated with an improved prognosis at the population level.** *Cancer Epidemiol Biomarkers Prev* 2001, **10**(9):917–923.
17. Sinicrope FA, Foster NR, Thibodeau SN, Marsoni S, Monges G, Labianca R, Kim GP, Yothers G, Allegra C, Moore MJ, et al: **DNA mismatch repair status and colon cancer recurrence and survival in clinical trials of 5-fluorouracil-based adjuvant therapy.** *J Natl Cancer Inst* 2011, **103**(11):863–875.
18. Parsons MT, Buchanan DD, Thompson B, Young JP, Spurdle AB: **Correlation of tumour BRAF mutations and MLH1 methylation with germline mismatch repair (MMR) gene mutation status: a literature review assessing utility of tumour features for MMR variant classification.** *J Med Genet* 2012, **49**(3):151–157.
19. Bessa X, Alenda C, Paya A, Alvarez C, Iglesias M, Seoane A, Dedeu JM, Abuli A, Ilzarbe L, Navarro G, et al: **Validation microsatellite path score in a population-based cohort of patients with colorectal cancer.** *J Clin Oncol* 2011, **29**(25):3374–3380.
20. Colomer A, Erill N, Vidal A, Calvo M, Roman R, Verdu M, Cordon-Cardo C, Puig X: **A novel logistic model based on clinicopathological features predicts microsatellite instability in colorectal carcinomas.** *Diagn Mol Pathol* 2005, **14**(4):213–223.
21. Greenson JK, Huang SC, Herron C, Moreno V, Bonner JD, Tomsho LP, Ben-Yzhak O, Cohen HI, Trougouboff P, Bejhar J, et al: **Pathologic predictors of microsatellite instability in colorectal cancer.** *Am J Surg Pathol* 2009, **33**(1):126–133.
22. Hyde A, Fontaine D, Stuckless S, Green R, Pollett A, Simms M, Sipahimalani P, Parfrey P, Younghusband B: **A histology-based model for predicting microsatellite instability in colorectal cancers.** *Am J Surg Pathol* 2010, **34**(12):1820–1829.
23. Jenkins MA, Hayashi S, O'Shea AM, Burgart LJ, Smyrk TC, Shimizu D, Waring PM, Ruszkiewicz AR, Pollett AF, Redston M, et al: **Pathology features in Bethesda guidelines predict colorectal cancer microsatellite instability: a population-based study.** *Gastroenterology* 2007, **133**(1):48–56.
24. Roman R, Verdu M, Calvo M, Vidal A, Sanjuan X, Jimeno M, Salas A, Autonell J, Trias I, Gonzalez M, et al: **Microsatellite instability of the colorectal carcinoma can be predicted in the conventional pathologic examination: a prospective multicentric study and the statistical analysis of 615 cases consolidate our previously proposed logistic regression model.** *Virchows Arch* 2010, **456**(5):533–541.
25. Halvarsson B, Anderson H, Domanska K, Lindmark G, Nilbert M: **Clinicopathologic factors identify sporadic mismatch repair-defective colon cancers.** *Am J Clin Pathol* 2008, **129**(2):238–244.
26. Jass JR: **Role of the pathologist in the diagnosis of hereditary non-polyposis colorectal cancer.** *Dis Markers* 2004, **20**(4–5):215–224.
27. Hamilton SR, Bosman FT, Boffetta P, Ilyas M, Morreau H, Nakamura SI, Quirke P, Riboli E, Sobin LH: **Carcinoma of the colon and rectum.** In *WHO classification of tumours of the digestive system: 3rd volume.* 4th edition. Edited by Bosman FT, Carneiro F, Hruban RH, Theise ND. Lyon: IARC Press; 2010:134–146.
28. Halvarsson B, Lindblom A, Rambach E, Lagerstedt K, Nilbert M: **Microsatellite instability analysis and/or immunostaining for the diagnosis of hereditary nonpolyposis colorectal cancer?** *Virchows Arch* 2004, **444**(2):135–141.
29. Manders P, Spruijt L, Kets CM, Willems HW, Bodmer D, Hebeda KM, Nagtegaal ID, van Krieken JH, Ligtenberg MJ, Hoogerbrugge N: **Young age and a positive family history of colorectal cancer are complementary selection criteria for the identification of Lynch syndrome.** *Eur J Cancer* 2011, **47**(9):1407–1413.
30. Steinhagen E, Shia J, Markowitz AJ, Stadler ZK, Salo-Mullen EE, Zheng J, Lee-Kong SA, Nash GM, Offit K, Guillem JG: **Systematic immunohistochemistry screening for Lynch syndrome in early age-of-onset colorectal cancer patients undergoing surgical resection.** *J Am Coll Surg* 2012, **214**(1):61–67.
31. Schofield L, Grieu F, Goldblatt J, Amanuel B, Iacopetta B: **A state-wide population-based program for detection of lynch syndrome based upon immunohistochemical and molecular testing of colorectal tumours.** *Fam Cancer* 2012, **11**(1):1–6.
32. Jass JR, Walsh MD, Barker M, Simms LA, Young J, Leggett BA: **Distinction between familial and sporadic forms of colorectal cancer showing DNA microsatellite instability.** *Eur J Cancer* 2002, **38**(7):858–866.
33. Gryfe R, Kim H, Hsieh ET, Aronson MD, Holowaty EJ, Bull SB, Redston M, Gallinger S: **Tumor microsatellite instability and clinical outcome in young patients with colorectal cancer.** *N Engl J Med* 2000, **342**(2):69–77.
34. Klarskov L, Holck S, Bernstein I, Okkels H, Rambach E, Baldetorp B, Nilbert M: **Challenges in the identification of MSH6-associated colorectal cancer: rectal location, less typical histology, and a subset with retained mismatch repair function.** *Am J Surg Pathol* 2011, **35**(9):1391–1399.
35. Wagner A, Hendriks Y, Meijers-Heijboer EJ, de Leeuw WJ, Morreau H, Hofstra R, Tops C, Bik E, Brocker-Vriends AH, van Der Meer C, et al: **Atypical HNPCC owing to MSH6 germline mutations: analysis of a large Dutch pedigree.** *J Med Genet* 2001, **38**(5):318–322.

doi:10.1186/1472-6890-13-33

Cite this article as: Joost et al.: Efficient and reproducible identification of mismatch repair deficient colon cancer: validation of the MMR index and comparison with other predictive models. *BMC Clinical Pathology* 2013 **13**:33.