

RESEARCH ARTICLE

Open Access

# Transcriptomic analysis of a psammophyte food crop, sand rice (*Agriophyllum squarrosum*) and identification of candidate genes essential for sand dune adaptation

Pengshan Zhao<sup>1,2\*</sup>, Salvador Capella-Gutiérrez<sup>3,4,5</sup>, Yong Shi<sup>1,2</sup>, Xin Zhao<sup>1,2</sup>, Guoxiong Chen<sup>1,2</sup>, Toni Gabaldón<sup>3,4,6\*</sup> and Xiao-Fei Ma<sup>1,2</sup>

## Abstract

**Background:** Sand rice (*Agriophyllum squarrosum*) is an annual desert plant adapted to mobile sand dunes in arid and semi-arid regions of Central Asia. The sand rice seeds have excellent nutrition value and have been historically consumed by local populations in the desert regions of northwest China. Sand rice is a potential food crop resilient to ongoing climate change; however, partly due to the scarcity of genetic information, this species has undergone only little agronomic modifications through classical breeding during recent years.

**Results:** We generated a deep transcriptomic sequencing of sand rice, which uncovers 67,741 unigenes. Phylogenetic analysis based on 221 single-copy genes showed close relationship between sand rice and the recently domesticated crop sugar beet. Transcriptomic comparisons also showed a high level of global sequence conservation between these two species. Conservation of sand rice and sugar beet orthologs assigned to response to salt stress gene ontology term suggests that sand rice is also a potential salt tolerant plant. Furthermore, sand rice is far more tolerant to high temperature. A set of genes likely relevant for resistance to heat stress, was functionally annotated according to expression levels, sequence annotation, and comparisons corresponding transcriptome profiling results in *Arabidopsis*.

**Conclusions:** The present work provides abundant genomic information for functional dissection of the important traits in sand rice. Future screening the genetic variation among different ecotypes and constructing a draft genome sequence will further facilitate agronomic trait improvement and final domestication of sand rice.

**Keywords:** *Agriophyllum squarrosum*, Sand rice, Salt tolerance, Heat tolerance, Comparative transcriptomics, Wild plant domestication

## Background

Food security is one of this century's key global challenges. Food system is precarious in the face of increasing global human population, changing consumption patterns, ongoing climate change and soil degradation, and growing scarcity of water and land [1-5]. The pace of global

warming is expected to accelerate; while extreme weather events will become more frequent and the temporal and spatial precipitation is likely to be unpredictable [2,5]. To date, wheat, maize, rice, and soybean are the main sources for human and livestock calories in many agricultural regions around the world [1]. The time lags of these crops in adapting to a changing environment urge scientists to exploit crop wild relatives as a new genetic resource in crop improvement [3,4]. Furthermore, one recent assessment of national food supplies worldwide demonstrated that the diversity of crop species is reducing and global food homogeneity is increasing over the past 50 years, which are potential threats to food security [6]. Thus,

\* Correspondence: zhaopengshan@lzb.ac.cn; toni.gabaldon@crg.eu

<sup>1</sup>Key Laboratory of Stress Physiology and Ecology in Cold and Arid Regions, Gansu Province, Cold and Arid Regions Environmental and Engineering Research Institute, Chinese Academy of Sciences, Lanzhou 730000, People's Republic of China

<sup>3</sup>Bioinformatics and Genomics Programme, Centre for Genomic Regulation (CRG), Dr. Aiguader, 88, 08003 Barcelona, Spain

Full list of author information is available at the end of the article

developing new crop species and increasing crop diversity will be a cornerstone of sustainable and intensified food production.

Desert ecosystem is far more harsh than most agricultural ecosystems, where major crop species are grown. In the desert, the plant species diversity is low and new evidence has shown that speciation in such environments is extensively driven by recent climate and habitat changes [7,8]. Plants survived in the desert regions must cope with challenging environmental factors, such as extremes of temperature, high evaporation, low and erratic precipitation, salinity, solar radiation, and high light intensity [9,10]. The desert plants therefore fascinate scientists with their unique adaptation and survival strategies [11]. Recently, next-generation sequencing (NGS; i.e. genomics and transcriptomics) was used to explore the possible adaptation mechanism of some desert plants, i.e. *euphratica* [12,13], *Rhazya stricta* [10], *Reaumuria soongorica* [14], and *Ammopiptanthus mongolicus* [15,16]. A feature of these plants is extensive adaptation, and indeed such studies improve our understanding of how they adapt to various kinds of stress factors. However, the intrinsic adaptation and survival strategies throughout the different stages of the life cycle of these desert species do not lend themselves easy to transfer to our major crop plants. Domestication of a potential crop species from desert environments, which is able to buffer the ongoing climate

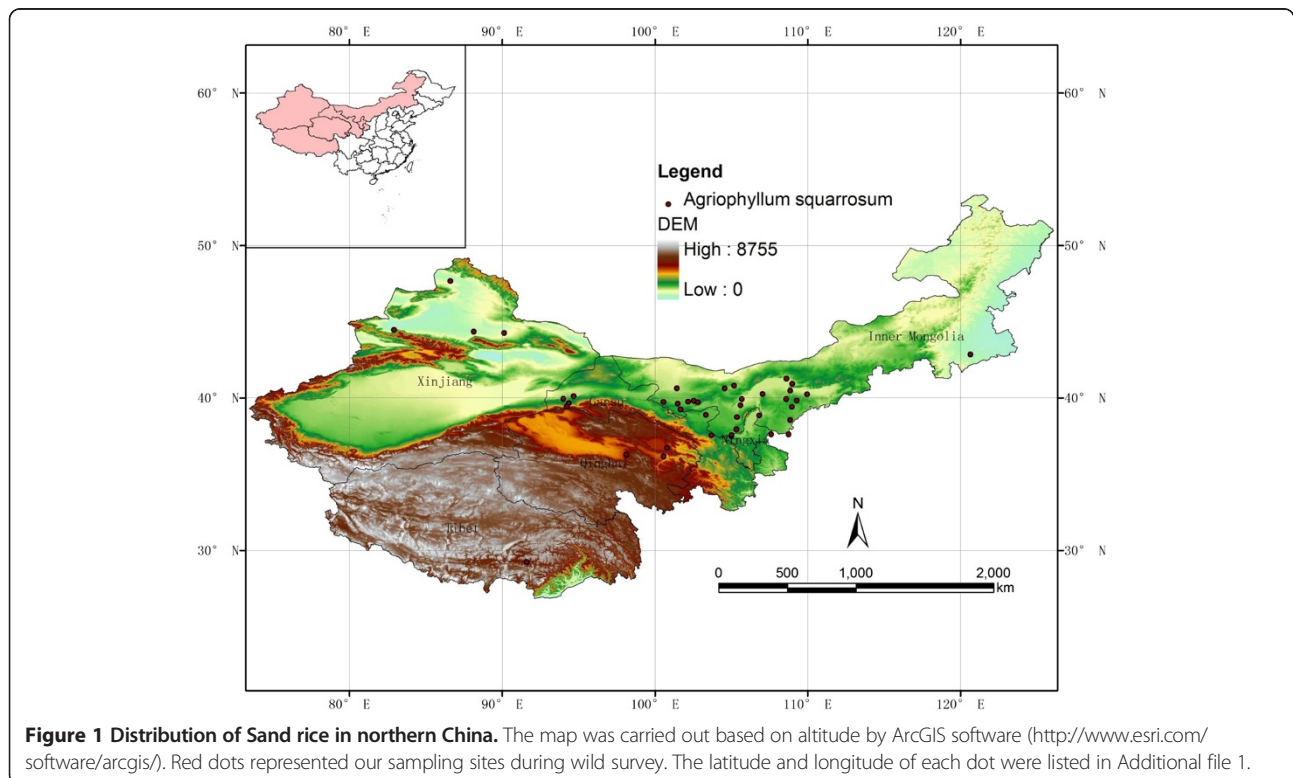
change, promises to be an effective strategy to keep food security.

Sand rice (*Agriophyllum squarrosum*) is a pioneer annual psammophyte. This species and another important crop sugar beet (*Beta vulgaris*) are assigned to the Amaranthaceae family within the order of Caryophyllales. Sand rice intrinsically adapts to the mobile and semi-mobile sand dunes in arid regions of China (Figure 1 and Additional file 1). The distribution areas also include Mongolia, Central Asia, and Russia. The nutrition values of sand rice seeds are comparable with the Amaranthaceae species quinoa [17], and archaeological records showed that sand rice has been used as army provisions in Tang Dynasty (AD 618–907) in China [17,18]. Thus, sand rice represents a new crop alternative for future food production, yet its resilience and adaptive capacity remain largely unexplored and poorly understood. We here conduct transcriptomic analysis to dissect the genetic mechanisms that enable sand rice to adapt to desert environments. The sequence information will guide our subsequent domestication of this plant to cope with future food security.

## Results

### Annotation and functional characterization of sand rice unigenes

Total RNA was isolated from roots, mature leaves, inflorescences, and stems of single plant (Additional file 2). The sample was sequenced on a single lane of the Illumina



HiSeq 2000 platform. After stringent quality assessment and data filtering, 30,283,868 reads (6.1 G) with 86.88% Q30 bases were yielded (Additional file 3). The raw paired-end sequence dataset was deposited in the National Center for Biotechnology Information (NCBI) Short Read Archive under accession number SRR1559276.

The clean reads were assembled by Trinity program (Table 1; [19]) and 104,118 transcripts were generated with average length of 1107 bp and an N50 length of 1950 bp (Additional file 4). These transcripts were further subjected to cluster and assembly analyses. A total of 67,741 unigenes was obtained with mean length of 764 bp and an N50 value of 1343 bp (Figure 2A). The length of a given unigene was positively correlated with the number of reads assembled into it, which is expected for a randomly fragmented transcriptome (Additional file 4). Furthermore, Open Reading Frames (ORFs) were analyzed by getORF from EMBOSS package and 67,458 unigenes (99.58%) had ORFs with a start codon (Additional files 4 and 5). These results demonstrate a high coverage over this species transcriptome. To validate the assembly quality of sand rice unigenes, 18 unigenes were randomly selected to perform RT-PCR and 16 of them were successfully amplified (Additional file 6), suggesting that the assembled unigenes were highly accurate.

To further characterize the sand rice transcriptome, GC content of unigenes for sand rice and of transcripts for *Arabidopsis*, soybean, and rice were computed (Additional file 7). The GC content of approximately 59% of unigenes was in the range of 35%-45% (Additional file 7). The average GC content of sand rice was approximately 39.5% and slightly lower than that of *Arabidopsis* and soybean [20].

The entire unigenes were then aligned to the NCBI non-redundant protein (Nr) database, the Swiss-Prot protein database, and Clusters of Orthologous Groups of proteins (COG) with a threshold less than 1E-5. To increase the annotated unigenes number, a BLASTx comparison of the

sand rice unigenes with the newly sequenced sugar beet peptide sequences [21] was conducted, and the results were incorporated into the Nr annotation results (See Methods). Among the 67,741 unigenes, 29,048 (42.88%) unigenes were significantly matched to the deposited ones in the public protein databases (Table 2 and Additional file 8). Approximately 65.50% of the unigenes were mapped to known genes in plants with best hits ( $E$ -value < 1e-50; Additional file 9), and 48.83% of unigenes can hit deposited sequences with similarity over 80% in Nr database (Additional file 9). The taxonomic distribution based on Nr annotations showed that 18,677 (64.58%) unigenes had top hits to *B. vulgaris* (Figure 2B). The technical limitation, such as read length and sequencing depth, affects the rate of transcriptomic annotation to some extent [14,22,23]. The average length of un-annotated sequences was indeed shorter than that of the annotated unigenes (Figure 2C; 413 bp vs 1165 bp) and the expression level of un-annotated unigenes inferred by reads per kilobase per million reads (RPKM) was also much lower (Figure 2D). These results might be a simple explanation why only 43% unigenes were annotated. However, the possibility that some of these unigenes might be species specific genes cannot be rule out, because there were 734 unigenes (length  $\geq$  500 bp and RPKM  $\geq$  3) and 138 unigenes (length  $\geq$  1000 bp and RPKM  $\geq$  5) failed to hit any genes in public databases, respectively.

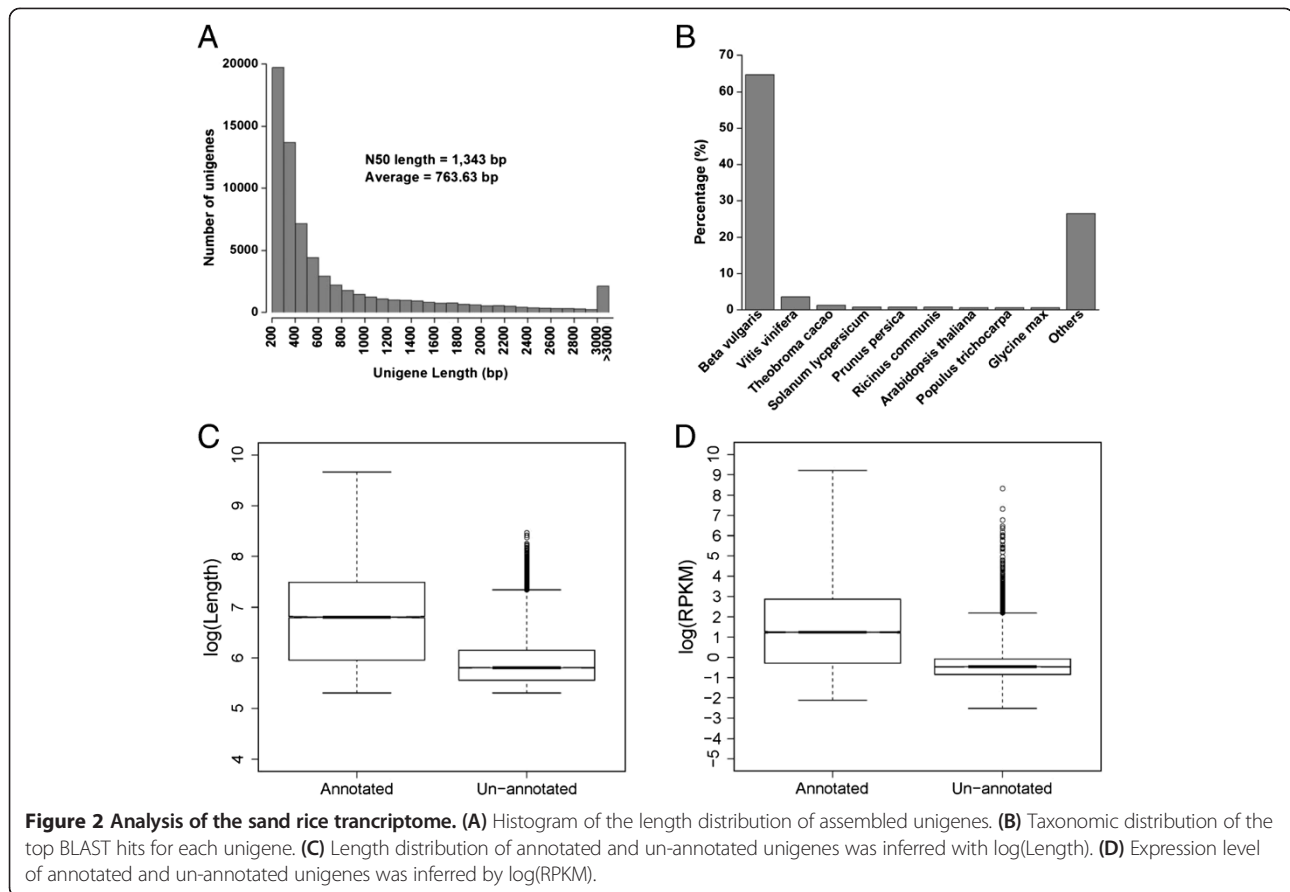
Annotations and associated cellular component, molecular function, and biological process gene ontology (GO) terms were carried out for each sand rice unigene ( $E$ -value < 1E-5). The summary of final sand rice transcriptomic annotation and associated GO terms from this analysis was provided in Additional file 8. In total, 32.88% of unigenes (22,270) had a significant hit in the public databases and 22,227 unigenes received at least one GO term. The most abundant biological process GO terms were oxidation-reduction process (1,608 unigenes) and response to salt stress (1,381 unigenes). GO terms associated with response to other environmental cues, such as water deprivation (904 unigenes), abscisic acid (ABA, 855 unigenes), cold (855 unigenes), wounding (797 unigenes) and heat (465 unigenes), were also enriched. The highly enriched classifications in biological process GO terms suggest that most of annotated unigenes are involved in fundamental responses to environmental circumstance. The top 50 represented GO terms were shown in Additional file 10.

#### Phylogenetic position of *A. squarrosus* and comparative transcriptomics of sand rice versus sugar beet

After the publication of the first complete genome of a caryophyllales species, the sugar beet *B. vulgaris* [21], there is an increasing interest in understanding the phylogenetic

**Table 1 Overview of *de novo* sequence assembly for sand rice**

Length range (bp)	Contigs	Transcripts	Unigenes
200-300	1,351,306 (96.03%)	21,597 (20.74%)	19,711 (29.10%)
300-500	24,424 (1.74%)	23,915 (22.97%)	20,837 (30.76%)
500-1000	15,609 (1.11%)	19,725 (18.94%)	12,693 (18.74%)
1000-2000	10,162 (0.72%)	21,023 (20.19%)	8,679 (12.81%)
>2000	5,688 (0.40%)	17,858 (17.15%)	5,821 (8.59%)
Total number	1,407,189	104,118	67,741
Total length	126,635,518	115,271,030	51,729,464
N50 length	136	1,950	1,343
Mean length	89.99	1107.12	763.63



position of other caryophyllales and the evolutionary relationships of this clade with other plant orders. The position of this order of flowering plants has been under debate as earlier work placed it with rosids, asterids or as sister branch to both groups [21,24,25]. Sugar beet remains the only fully-sequenced genome within this order, but the availability of large-scale transcriptomic data paves the way to increase the taxonomic sampling of phylogenomic analysis. Here we employed transcriptomic data coming from sand rice and another caryophyllales species *R. soongorica* [14] to elucidate their phylogenetic position. The use of transcriptomic data for phylogenomic analysis is challenging given the high fragmentation of sequenced genes, the presence of untranslated region, and the difficulty of establishing orthology relationships [26]. We initially searched

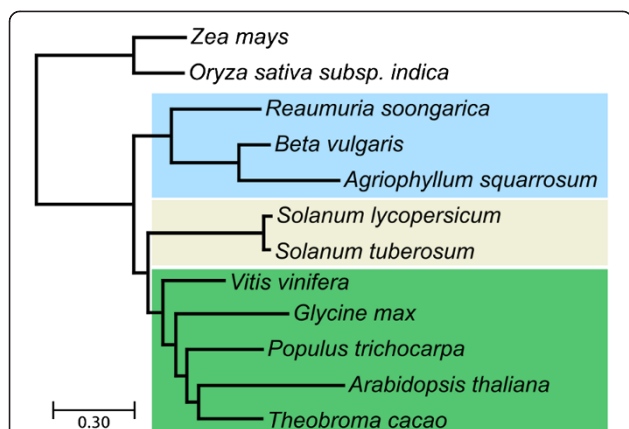
**Table 2 Summary of sequence annotation for sand rice**

Annotated databases	Unigene	Percentage (%)
Nr	28,920	42.69
Swissprot	20,730	30.60
GO	22,270	32.88
COG	9,728	14.36
KEGG	5,848	8.63
Total	29,048	42.88

for orthologs in *A. squarrosus* and *R. soongorica* of the 110 widespread marker genes that had been previously in a phylogenetic placement of *B. vulgaris*, concatenated these into a combined alignment, and performed Maximum Likelihood analyses (see Methods). However, this analysis rendered inconclusive results with no topology being significantly more supported than alternative placements, indicating either a lack of sufficient phylogenetic signal or the presence of noise in the data. We then increased the marker gene set by allowing one of the species used in the *B. vulgaris* analysis to be missing. This increased the dataset to 221 alignments of orthologous gene sets, which we concatenated. In addition we applied a strict alignment filtering to reduce sequence heterogeneity. The resulting topology inferred by Maximum Likelihood (Figure 3), places sand rice within a clade with sugar beet, whereas *R. soongorica* is branching earlier within caryophyllales. The placement of caryophyllales as a sister group to a clade formed by rosids and asterids is significantly more supported than other alternative placements of caryophyllales.

To evaluate gene conservation between sand rice and sugar beet, we compared the assembled unigenes to sugar beet protein sequences (<http://bvseq.molgen.mpg.de/Genome/Download/RefBeet-1.1/>). A BLASTx comparison





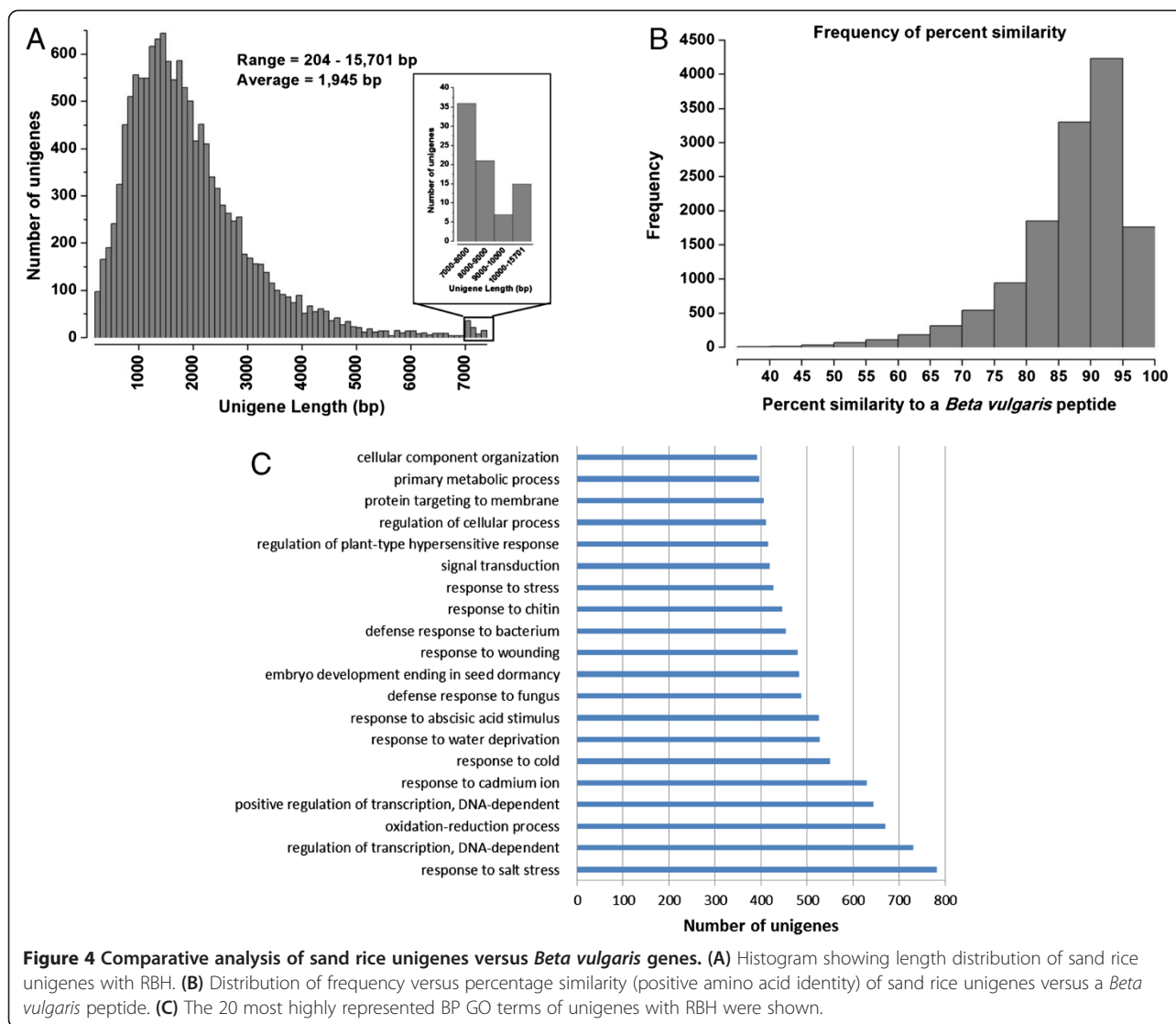
**Figure 3 Species phylogeny of ten fully-sequenced plant species plus the two new Caryophyllales with transcriptomic data.** The phylogeny was based on the concatenation of 221 sets of one-to-one orthologous genes among the species used in this study. All aLRT branch support values were equal to 1.0 and, therefore, not shown in the tree. Different colour backgrounds highlights the relationships of the three main groups studied here: Caryophyllales (light blue), Asterids (Beige), and Rosids (green). The placement of Caryophyllales as basal to the branching of Asterids and Rosids was significantly more supported than an alternative placement as sister group of Rosids.

showed that 25,252 of the 67,741 sand rice unigenes had significant ( $E\text{-value} \leq 1E\text{-}5$ ) top hits to sugar beet peptide sequences (Additional file 11). A tBLASTn comparison was then performed between sugar beet and sand rice. We found that 23,876 peptide sequences had best hits to sand rice unigenes (Additional file 11). To reduce the chance of mistaking a paralogue for an orthologue, we identified as pairs of putative orthologs only those consisting of reciprocal best hits (RBH). This approach resulted in a total of 13,334 pairs of putative orthologs, each pair corresponding to a single sand rice unigene and a sugar beet peptide sequence. The length of approximately 71.31% of unigenes was in the range of 700 – 2500 bp and with an average length of 1945 bp (Figure 4A). The relative homology of each unigene to the most similar sugar beet peptide was measured by the percentage of positive sequence similarity (Figure 4B). A large proportion (90.60%) of unigenes showed more than 80% similarity to the corresponding sugar beet orthologue. In addition, a total of 11,581 unigenes were assigned at least one GO term. The most highly represented biological process GO terms were response to salt stress (782 unigenes) and regulation of transcription/DNA-dependent (731 unigenes). Sugar beet is a well-known salt resistance plant. Recent proteomic analysis showed that the differentially accumulated proteins after salinity treatment are mainly related to photosynthesis, protein folding and degradation, metabolism, and stress and defense [27,28]. Out of the 782 unigenes, we identified 20 potential chaperons, seven aquaporins and six late

embryogenesis abundant proteins (LEAs). The enzymes involved in scavenging reactive oxygen species (ROS), such as ascorbate peroxidase (APX), monodehydroascorbate reductase (MDAR), and glutathione S-transferase (GST), and in other metabolism processes were overrepresented. We also observed 110 and 38 unigenes encoded transcription factors and kinases, respectively. The 20 most highly represented biological process GO terms were shown in Figure 4C.

### Candidate genes involved in heat tolerance in sand rice

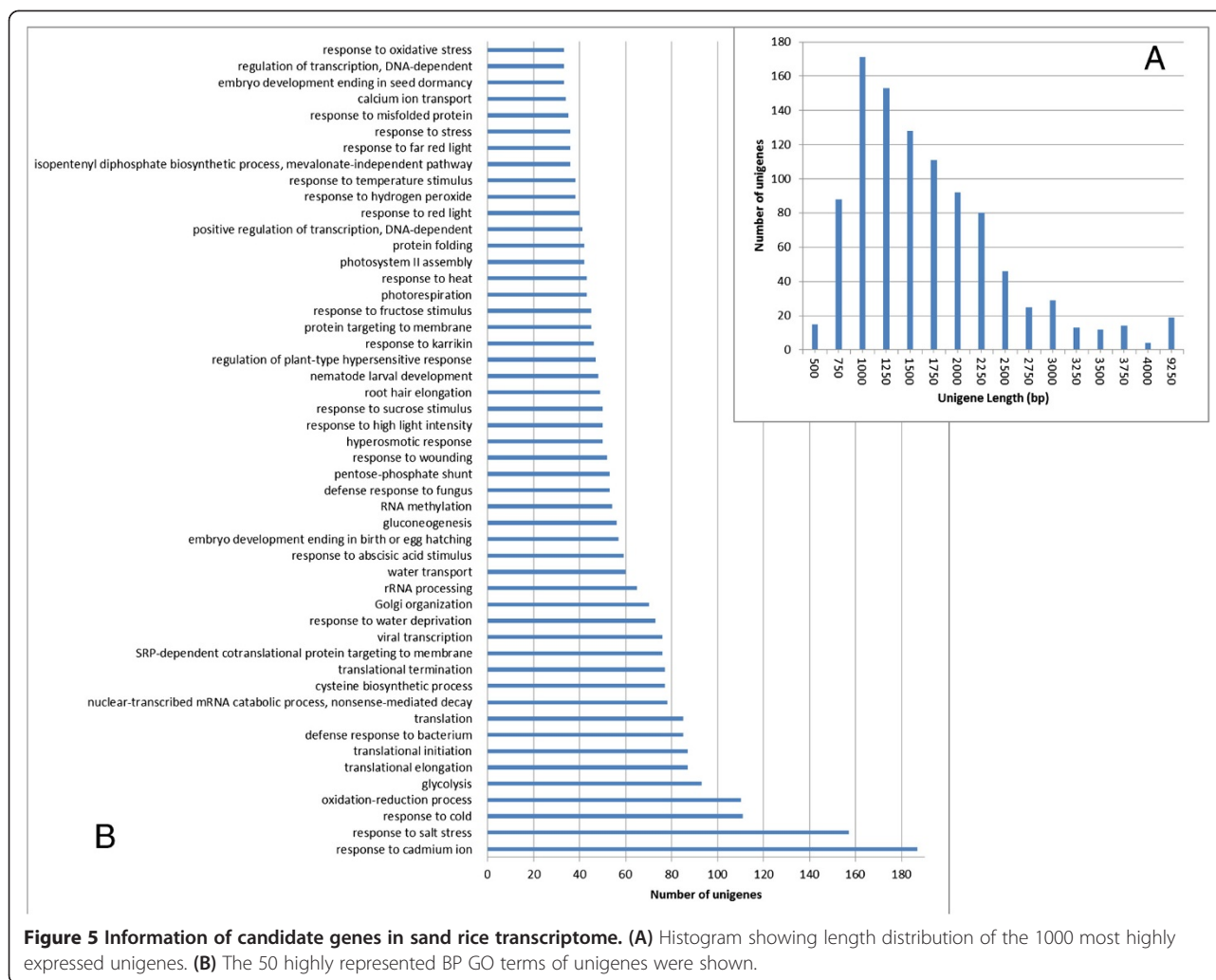
Detailed studies of various species have showed that variations in basal or constitutive expression strengths of stress-related genes enable an individual resilient to changing environments [29-33]. A specific term “frontloaded genes” was named for these constitutively expressed genes [29]. By comparing with their respective less-adapted species, the effect of so-called frontloaded genes on the niche adaptation has been highlighted in *Arabidopsis halleri* [34], *Alyssum lesbiacum* [35], and *Thlaspi caerulescens* [36]. Sand rice was far more resilient to high temperature than other plant species (Additional file 12). To dissect the stress tolerance mechanism and screen the possible responsible genes, the top 1,000 abundant unigenes inferred from the RPKM values were first analyzed. The length of 65.5% of unigenes was in the range of 1000–2000 bp (Figure 5A). A total of 938 unigenes was assigned at least one GO term and the 50 most highly enriched biological process GO terms were shown in Figure 5B. To further understand the function of these highly expressed unigenes, the corresponding *Arabidopsis* orthologs were searched with the same approach as the comparison of sand rice versus sugar beet and 725 RBH pairs were identified (Additional file 13). We found that 26 unigenes encoded putative kinases and 19 of them had *Arabidopsis* orthologs. An *Arabidopsis* glycogen synthase kinase3 (*ASKα*), which is homologous to sand rice comp20065\_c0, is critical for the regulation of redox stress response and tolerance of salt stress [37]. Also a gene coding for a sucrose nonfermenting 1-related protein kinase 2.4 (*SnRK2.4*; comp21292\_c0 vs AT1G10940) was identified. *SnRK2.4* plays an important role in mediating drought, salt, and osmotic stress signaling and tolerance [38-40] and is essential for root, shoot and pollen development [39,41,42]. New evidence demonstrated that *SnRK2.4* is also involved in cadmium stress response by controlling ROS accumulation [43]. Among the 1000 most highly expressed unigenes, 24 unigenes encoded putative transcription factors and 21 of them had orthologs in *Arabidopsis* (Additional file 13). The main function of these transcription factors included mediation of abiotic stress responses and hormone responses and regulation of flowering and circadian rhythm. One of them (comp42160\_c0 vs AT3G24500) encodes a transcriptional



coactivator multiprotein bridging factor 1c (MBF1c), which is a key regulator of thermotolerance and controls ethylene-, glucose-, trehalose-, and salicylic acid-signaling pathways in *Arabidopsis* [44-46]. Mutant defective in MBF1c is sensitive to osmotic stress and oxidative stress [47]. MBF1c also controls leaf cell expansion through regulating the expression of endoreduplication-related factors [48].

The daily and seasonal temperature in deserts fluctuates in a wide range. Anticipation of rising temperature early enough is crucial for plant cells to activate defense gene expression and accumulate so-called heat-shock proteins (HSPs) to survive against upcoming heat damage [49]. Interestingly, 43 of the 1000 most highly expressed unigenes were categorized into response to heat term and 12 unigenes encoded putative HSPs (Additional file 13). There are 4 HSP110s, 7 HSP100s, 7 HSP90s, 14 HSP70s, and 32 small HSPs in *Arabidopsis* [50] and 3 HSP110s, 4

HSP100s, 4 HSP90s, 4 HSP70s, and 18 small HSPs were identified with RBH in sand rice transcriptome (Additional file 13). Most of HSPs localized in cytosol based on the prediction by Finka et al. [50] and 12 HSPs were included into the top 1000 expression unigenes and seven were classified into response to heat GO term. Extensive studies in recent years have demonstrated that up-regulation of HSPs is regulated by a complex cascade and activation of heat-shock transcription factors (HSFs) are unquestionably the terminal steps to mediate the expression of HSP genes [49,51]. *Arabidopsis* possesses diverse HSF families including 21 genes [51,52]. Twelve of them had orthologs in sand rice transcriptome (Additional file 13). In *Arabidopsis*, four members belong to the HsfA1 subclass and HsfA1a, HsfA1b, and HsfA1d share the role of master regulator for triggering the expression of the heat stress response genes encoding chaperones and diverse transcription regulators, including HsfA2, HsfB1, Dehydration-responsive



element binding protein 2A (DREB2A), MBF1c, and bZIP28 [51,53-56]. Together with HsfA1, HsfA2 forms heterooligomeric complexes resulting in synergistic transcriptional activation of heat stress gene expression [51]. However, the orthologs of HsfA1a and HsfA1e were not identified in sand rice (Additional file 13).

Transcriptome profiling technologies, including microarray and high-throughput sequencing platforms, markedly accelerate our knowledge of molecular processes and networks involved in stress tolerance in *Arabidopsis*. Recently, a data mining method named machine learning was used to screen stress-related genes and 227 heat stress-related candidate genes and 87 heat stress-specific expressed genes were identified [57,58]. To exploit the possibility that translate this knowledge to sand rice, the orthologs of these genes were searched in sand rice transcriptome data. We found a total of 169 unigenes with 141 and 46 unigenes homologous to heat stress-related and -specific genes, respectively (Additional file 13). There were 34 unigenes included in the 1000 most highly

expressed category, suggesting that constitutively high expression of these unigenes are an effective strategy to cope with the reoccurring heat stress damage.

Desert plants usually have to encounter recurring or multiple environmental stresses including drought, extreme temperatures, salinity, solar radiation, and high light intensity. High evaporation rates in desert areas lead to water scarcity and in turn salinity components accumulate in the surface layers of the sand dunes. Accordingly, sand rice is routinely subjected to a combination of various abiotic stresses - drought, salinity, and high temperature - all at once in midday. Recent transcript profiling studies have shown that the molecular response of plants to multifactorial stress cannot be directly extrapolated from the response to single applied stress [59-63]. Sewelam et al. [62] identified 190 candidate genes which are essential for enhancing plant resistance to a combination of salt, osmotic and heat stresses. We found that 67 out of 190 genes had an orthologue with RBH in sand rice transcriptome and six and three unigenes encoded HSPs and LEAs,

respectively (Additional file 13). There were 16 unigenes included in the 1000 most highly expressed category, suggesting that these genes enable sand rice to minimize damage caused by stresses or to sustain the constantly harsh environmental challenges.

## Discussion

### The putative heat adaptation related genes in sand rice

Plants thriving in desert environment face various factors: unpredictable annual precipitation and its distribution and often presents with extensive quantities when occurs; temperature changes in a broad range, extremely high and low at daytime and nighttime, respectively; intensive radiation and other abiotic and biotic stresses [11,64]. A combination of ecological and evolutionary strategies is usually selected by most of species to mitigate extinction risks from climate variability [65]. Increasing lines of evidence have showed that desert plants have evolved a unique complementary set of adaptation and survival strategies throughout the different stages of their life cycles [11]. Recent advances in high-throughput and comparative genomics are shedding light on the evolutionary mechanisms how plants adapt to extreme environment [66,67]. Barshis et al. [29] found a list of genes showing constitutively higher expression in thermally resilient corals. Such situation were also found in metal/ions tolerant extremophyte plants [33-36], however, such genes were not screened by Barah et al. [68] when dissecting the diversity of heat stress transcriptional response among ten ecotypes of *Arabidopsis thaliana*. Sand rice is far more resilient to heat shock than other plants (Additional file 12). To uncover the possible mechanism underlying the thermal tolerance, we firstly focused on the 1000 most highly expressed unigenes. Through comparative transcriptomics, 26 putative kinases and 24 transcription factor were identified, and key regulators such as SnRK2.4 and MBF1c were also included (Additional file 13). GO annotation showed that unigenes involved in cadmium, salt, and cold stress responses were enriched. Although directly comparing expression (RPKM) across unigenes for quantification in the total RNA library is inappropriate, we indeed found 43 unigenes are response to heat stress (Figure. 5) and twelve out of 33 HSPs with homologs in *Arabidopsis* are categorized into the most highly expressed group. Furthermore, transcriptomic profiling technologies has been used to systemically dissect the genetic mechanisms of stress responses in *Arabidopsis* in recent years. By comparative transcriptomics, we identified 169 and 67 heat stress-related/-specific genes and multiple stresses-related genes in sand rice transcriptome and 34 and 16 unigenes were constitutively high expressed genes, respectively (Additional file 13). All these results suggest that the constitutively high expressed unigenes in sand rice transcriptome are candidate genes relevant

for desirable adapted traits. To verify these predicted heat-related genes, we selected 8 candidates for quantitative RT-PCR (Additional file 14). The expression of *SnRK2.4*, *HsfA1b*, *HSPs* (comp41797\_c1, comp42214\_c0, and comp19571\_c0), heat stress-related gene (comp19559\_c0), and heat stress-specific genes (comp41797\_c1, comp19571\_c0, and comp36531\_c0) was significantly induced after 3 h heat stress treatment and the fold changes ranged from 2.5 to 2500. The expression levels of multiple stresses-related gene comp19684\_c0/lipid transfer protein 4 (LTP4), were similar between control and heat-treated leaves, which is consistent with previous report in *Arabidopsis* [62], suggesting that sand rice LTP4 is also a multiple stresses-specific gene. Subsequent studies on these candidate genes will facilitate to unravel the mechanism of adaptation to extreme temperature in sand rice.

We found that twelve of 21 *Arabidopsis* HSFs had homologs in sand rice transcriptome (Additional file 13). In *Arabidopsis*, HsfA1s are key heat stress regulators and are comprised by four members, which constitute two pairs of duplicated genes (*HsfA1a* vs *HsfA1d*; *HsfA1b* vs *HsfA1e*) diverged after a recent whole genome duplication [53,54]. Coincidentally, *HsfA1a* and *HsfA1e* were absent in sand rice (Additional file 13). A simply explanation is that HsfA1s class is in ancestral condition and no expansion of this family has happened, although the technical limits cannot be ruled out. Interestingly, there was only one unigene (comp30600\_c0) showed RBH with the sugar beet TNL class resistance gene (Bv\_22240\_ksro, Additional file 11), indicating that our phylogenetic result is convinced and the presence of a single TNL class gene is a feature of Amaranthaceae in contrast to the expansion of this family in rosids and asterids [21]. Further experiments are needed to determine the ancestral evolutionary events.

### Sand rice is also a possibly salt-resistant plant

Sand rice and sugar beet both belong to the order of Caryophyllales. Phylogenetic analysis (Figure 3) confirmed again the previous result that Caryophyllales branched out before the separation of asterids and rosids [21]. Sand rice is close to sugar beet, whereas extreme xerophyte plant, *R. soongorica*, is branched off earlier within this same family. Sugar beet has an estimated genome size of 714–758 Mb, including 27,421 protein-coding genes [21]. Sand rice is also diploid with  $2n = 18$  chromosomes [69]. The genome of the sand rice is approximately 705 Mb (unpublished data). BLAST comparisons of sand rice and sugar beet showed that our sand rice transcriptome has high coverage of sugar beet protein sequences (Figure 4). All these results showed the close relationship between sand rice and sugar beet and the genomic information of sugar beet will be very helpful for our domestication of the sand rice.



Through comparative transcriptomics, we identified 13,334 pairs of putative orthologues between sand rice and sugar beet, in which 782 unigenes were categorized into response to salt stress GO term (Additional file 11). The genes functioned as chaperons, LEAs, protective enzymes, sugar transporters, and ion channels and the genes related to transcription and protein synthesis were highly represented. The classifications of these unigenes were similar to the sugar beet salt responsive protein groups, implying that sand rice and sugar beet share similar salt tolerance genes. To be mentioned, the MYB-, ethylene-responsive transcription factor (ERF)/DREB- and homeobox-leucine zipper protein-family transcription factors and serine/threonine-protein kinases and CBL-interacting protein kinases were enriched among 782 unigenes. Abscisic acid-, gibberellin-, auxin-, ethylene-signal related genes were also included. All these genes have been demonstrated as essential components in response to salt stress and other environmental stresses in *Arabidopsis* [70,71]. Moreover, we observed a group of glycine-rich RNA-binding proteins (GRPs) in this category. In *Arabidopsis*, three GRPs (atRZ-1a, GR-RBP4, and GRP7) play a negative role during seed germination and seedling growth and GRP2 only affects seed germination under salt stress condition [72-75]. It seems that similar strategy regulating gene expression at the post-transcriptional level is utilized in sand rice and sugar beet to cope with environmental stresses.

*P. euphratica* is well-known salt tolerant desert species. The genetic mechanism underpinning its salt adaptation was deeply studied recently [12,13]. The differentially expressed genes in salt-treated *P. euphratica* callus are mainly categorized into transport, transcription, cellular communication, and metabolism. Comparison of salt responsive genes between *P. euphratica* and another poplar (*P. tomentosa*) showed that more genes were classified into cation transporter, oxidoreductase activity, and response to abiotic stimulus [12], suggesting that specific genes are exploited to confer salt adaptation in desert poplar. Although it is not very suitable for directly comparing our unigene dataset with the salt responsive genes of *P. euphratica*, the terms such as metabolic process, oxidation-reduction process, regulation of transcription, and response to stimuli were indeed highly represented in our transcriptomic dataset (Additional file 10). Moreover, large number of unigenes was categorized into carbohydrate, amino acid metabolic pathways (Additional file 8), which is also similar with the results of *P. euphratica* to some extent [13]. However, comparative transcriptome analysis is required in further studies to dissect the salt adaptation mechanism in sand rice.

### Conclusions and perspectives

Sand rice is a potential crop alternative for future food production adapted to harsh climates. However, this species

has undergone only little agronomic modifications through classical breeding partly due to the absence of genomic information. In this study, 67,741 unigenes were obtained by deep Illumina RNA sequencing and approximately 43% of unigenes were annotated. Phylogenetic analysis clearly resolved the relationship between sand rice and other sequence crops, and provided additional support for the divergence of Caryophyllales prior to the split of asterids and rosids. Comparative transcriptomics showed a high level of conservation in terms of gene content and sequence similarity between sand rice and sugar beet. We also identified a set of heat stress responsive genes by comparing with expression profiles of the *Arabidopsis* orthologs. Our transcriptome will accelerate the dissection of genetic variations and illustration of gene expression and regulatory mechanisms of sand rice adapting to harsh desert environment, and also help us to unravel the controlling mechanism for weedy traits, i.e. long hypocotyl, abnormal growth of lateral branches, flowering at the same time, seed dispersal [17]. In addition, our ongoing sequencing of the sand rice genome and screening of chemical-induced mutants will pave the path to the domestication of sand rice in a far shorter time frame.

### Methods

#### Ethics statement

*A. squarrosus* is widely distributed in arid regions of China and is not an endangered or protected species. No specific permits were required when we collected the samples for this study.

#### Distribution of sand rice

The distribution areas of sand rice in northern China were investigated during the past two years. The sampling sites were shown as red dots in Figure 1, which was carried out by ArcGIS software based on the altitude information of five provinces in northern China (<http://www.esri.com/software/arcgis/>).

#### Plant materials and RNA extraction

Leaves, stem, roots, and inflorescences of sand rice (Additional file 2) were sampled in wild field, Yiwanquan, Jingtai County, Gansu province, northwest of China (37°21'50"N, 104°08'37"E), where the average annual precipitation is 180 mm from 1950 to 2000 (<http://www.worldclim.org/>). All samples were immediately frozen in liquid nitrogen and stored at -80°C for later RNA extraction.

Total RNA from each tissue was extracted with Plant total RNA Kit (TIANGEN, Beijing, China). The concentration and quality of each RNA sample were determined by 1% agarose gel electrophoresis, NanoDrop 2000™ micro-volume spectrophotometer (Thermo Scientific, Waltham, MA, USA) and Agilent 2100 Bioanalyzer (Agilent Technologies, Santa Clara, CA, USA). Equal amounts of purified

RNA from each of the four tissues were pooled together to construct the cDNA library.

#### **Library preparation and RNA-seq**

The cDNA library was prepared according to the description by Shi et al. [14]. Briefly, poly-A mRNA was purified by magnetic Oligo (dT) beads and fragmented followed by cDNA synthesis. The cDNA fragments were blunt-ended and ligated to sequencing adaptors. The ligation products were then size-selected for an insert size of 200 bp, and enriched by PCR with specific adaptor primers. Finally, the library was subjected to sequence by the Illumina HiSeq™ 2000 platform using 101 bp paired-end reads. A total of 30.28 million reads was generated with 86.88% above Q30 (Additional file 3).

#### **de novo assembly and functional annotation**

The clean reads were obtained after filtering adaptor sequences and reads with ambiguous 'N' bases and with a base quality less than Q30. Trinity was then used to assemble the clean reads into contigs (Table 1 and Additional file 4; [19]). According to the paired-end information and sequence similarity, the contigs were clustered and further assembled into transcripts. Finally, the longest transcripts in each cluster and the singletons were combined together as total unigenes. RPKM for each unigene was computed to determine the unigene expression profiles [76]. The ORFs were predicted by the "Getorf" program from the EMBOSS software package (Additional file 4; <http://emboss.sourceforge.net/apps/cvs/emboss/apps/getorf.html>). Functional annotation was conducted by aligning the unigenes to public protein databases (NCBI Nr, Swissprot, COG, KEGG) using BLASTx with an E-value less than 1e-5. For the statistical summary of Nr annotation and taxonomic distribution in Figure 2, Table 2, and Additional file 9, an additional BLASTx result (sand rice vs sugar beet, see below) was included based on the scores and e-value. Gene ontologies were assigned to each unigenes using Blast2GO [77].

#### **Phylogenetic analysis**

##### **Detection of marker genes in transcriptomic data from *A. squarrosus* and *R. soongorica***

The 110 phylogenetic marker genes recently used to reconstruct the species phylogeny of the closely relative *B. vulgaris* [21], or an extended dataset of 221 marker genes (see next section) were searched in the transcriptomic data coming from two caryophyllales species *A. squarrosus* (this study) and *R. soongorica* [14], with 67,741 and 46,203 predicted unigenes respectively. This was done by scanning both transcriptomes using exonerate [78] with a progressive relaxation of the minimum percentage of the aligned region from 80% to 20% in steps of 5%. Varying such score allows to detect the orthologous sequences in

both species. Additionally it readily identifies the coding part of the unigenes, which usually contain untranslated regions. Using this approach 99 and 100 orthologous sequences out of the 110 original marker genes, 208 and 182 orthologs out of the 221 for the extended markers set, were detected for *A. squarrosus* and *R. soongorica*, respectively, at different stringency levels. Of note for *R. soongorica*, 19 marker genes, 27 for the extended dataset, mapped to clusters of unigenes for which the longest sequence was selected as the representative of the cluster. The sequence data of the phylogenetic tree was deposited in TreeBase: <http://purl.org/phylo/treebase/phyloids/study/TB2:S16290>.

##### **Multiple sequence alignment of individual markers**

Unigenes detected as orthologs were added to the individual multiple sequence alignments (MSA) used to reconstruct the species phylogeny of sugar beet [21]. Sequences were added to the original untrimmed MSA using mafft v7.13 [79] and then sites with residues only in the newly aligned sequences were removed. Finally trimAl v1.4 [80] was used to remove columns that were filtered in the original study [21].

##### **Phylogenetic placement of *A. squarrosus* and *R. soongorica***

Filtered MSAs corresponding to 109 or 221 sets of marker genes including predicted orthologs in *A. squarrosus* and *R. soongorica*, were concatenated. For the 221-genes dataset an additional filtering step based BMGE program [81] was applied to reduce the data heterogeneity in the alignment as this may impact negatively on the inferred species tree [82]. BMGE, parameters were: -w 1 -h 1 -g 1 -s FAST. Species relationships were inferred from these (filtered) concatenated alignments using a Maximum Likelihood (ML) approach as implemented in PhyML v3.0 [83], using JTT as evolutionary model, which was the best fitting model in the majority of individual alignments. The tree topology search method was set to SPR (Subtree pruning and regrafting). Branch supports were computed using an aLRT (approximate likelihood ratio test) parametric test based on a chi-square distribution.

To compare statistical supports of the Maximum Likelihood topologies with alternative placement of caryophyllales as i) basal to both rosids and asterids or iii) sister group of rosids, we generated alternative topologies using ETE v2 [84] and their likelihoods were computed for the same alignment with the same parameters. Log-likelihoods of alternative topologies were compared using CONSEL [85] using the eight different statistical tests implemented in this program.

##### **Comparative transcriptome analysis**

Identification of the orthologous sequences was performed firstly by BLASTx using assembled unigenes and sugar beet

protein sequences (<http://bvseq.molgen.mpg.de/Genome/Download/RefBeet-1.1/>). The threshold is  $E\text{-value} \leq 1E-5$ . To avoid the possibilities of mistaking a paralogue for an orthologue, a BLASTx comparison was then conducted to find the sand rice unigene with best hit to each sugar beet peptide sequence. Finally, the pairs of putative orthologs (i.e. sand rice unigene x and sugar beet protein X were consistently found as reciprocal best hit for each other) were identified. The same approach was also used to screen the orthologous sequences between sand rice and *Arabidopsis*, using sequences downloaded from the TAIR 10 release ([www.arabidopsis.org](http://www.arabidopsis.org)). The detailed information was showed in Additional files 11 and 13.

### Heat shock treatment

The sand rice seeds were collected at Shapotou Desert Research & Experiment Station (SPT, 37°27'38"N, 104°59'59"E) and Naiman Desertification Research Station (NM, 42°59'23"N, 120°46'01"E), Cold and Arid Regions Environmental and Engineering Research Institute, Chinese Academy of Sciences. The average annual precipitation of SPT and NM is 186 mm and 350–500 mm, respectively. Sand rice seedlings at five-leaf stage were exposed to 50°C for 3 h in dark and then allowed to recover for 7 d. No significant phenotype was observed in the seedling of SPT ecotype, while the tips of some leaves of NM ecotype showed necrosis (Additional file 12). Quinoa seedlings at six-leaf stage and wild barley seedlings at three-leaf stage were also exposed to the same heat shock conditions. The quinoa seedlings were almost killed one day after heat shock treatment and wild barley also cannot stand for this treatment (Additional file 12).

### Validation of assembled unigenes and confirmation of heat stress candidate genes by RT-PCR

Total RNA from normal leaves or heat treated leaves was isolated and 1 µg high quality RNA was reverse transcribed using the RevertAid First Strand cDNA Synthesis Kit (#K1621, ThermoFisher Scientific). The primers for the validation of assembly quality and the verification of candidate genes were designed online by BatchPrimer 3 (<http://probes.pw.usda.gov/batchprimer3/>) (Additional file 15). For RT-PCR, 0.2 µl of the cDNA synthesis mixture from normal leaves was used as the template, 2 µl of 10 × ExTaq buffer, 1.6 µl dNTP mixture (2.5 mM each), 0.8 µl each primer (10 µmol/l), 0.1 µl of ExTaq (5 units/µl, TaKaRa, Dalian, China) and 14.5 µl sterile distilled water were combined to a final volume of 20 µl. The PCR reaction was performed on a C1000 TOUCH thermal cycler with the following conditions: 98°C for 2 min, followed by 36 cycles of 98°C for 10 s, 55°C for 30 s, and 72°C for 1 min, and one cycle at 72°C for 10 min. The quality of the assembled unigenes was detected by loading 5 µl of the above PCR products into a 1% agarose gel along with

DNA Marker 3 (TIANGEN, Beijing, China). Quantitative RT-PCR was performed on the Agilent Technologies Stratagene M × 3000P with DyNAmo Flash SYBR Green qPCR Kit (#F-415XL, ThermoFisher Scientific). The final primer concentration was 0.4 µM in 20 µl total reaction volume and 1 µl of 10 times diluted cDNA mixture was used as the templates. The reaction profile was as follows: segment 1, 95°C for 10 min; segment 2, 40 cycles of 95°C for 30 s and 60°C for 1 min; segment 3, one cycle of 95°C for 1 min, 55°C for 30 s, and 95°C for 30 s. The expression levels of candidate genes were normalized relative to that of *Actin 2* (comp237782\_c0) and the levels of candidates in normal leaves were set to 1.0. Each RNA sample was assayed in triplicates and two independently biological repeats were conducted.

### Availability of supporting data

The RNA-seq raw data of this article was deposited in the NCBI Short Read Archive (SRA) under accession number SRR1559276. The sequence data supporting the phylogenetic tree of this article was deposited in the permanent and resolvable resource locator TreeBase: <http://purl.org/phylo/treebase/phyloids/study/TB2:S16290>.

### Additional files

**Additional file 1:** Locations of red dots in Figure 1.

**Additional file 2:** The morphology of the sand rice adult plant.

**Additional file 3:** Summary of Illumina transcriptome sequencing for Sand rice.

**Additional file 4:** Overview of sand rice transcriptome sequencing and assembly. Length distribution of Contigs (A) and transcripts (B). (C) The correlation between Unigene length and reads number assembled into the corresponding Unigenes. (D) Size distribution of Sand rice open reading frames (ORFs).

**Additional file 5:** Length distribution of Open Reading Frames (ORFs).

**Additional file 6:** Validation of the quality of RNA-seq by RT-PCR. Eighteen candidate genes were randomly selected for RT-PCR and 5 µl of the PCR products were loaded. *Actin 2* was used as a control. M: marker 3; White arrow showed the theory band of comp264744\_c0. Primer sequences were listed in Additional file 15.

**Additional file 7:** GC content analysis of sand rice unigenes. (A) Frequency of GC content of sand rice unigenes. (B) Distribution of GC content of unigenes for sand rice (As) and transcripts for *Arabidopsis* (At), Soybean (Gm), and rice (Os).

**Additional file 8:** Summary of unigene annotations. Integrated function annotation and Nr species distribution, GO, COG, and KEGG annotations were shown.

**Additional file 9:** Characteristics of sand rice unigenes hit deposited sequences in Nr database and newly sequenced sugar beet peptide sequences. (A) Nr annotation results distributed by the E-value. (B) Nr annotation results based on sequence identities.

**Additional file 10:** Most highly represented GO terms in the sand rice transcriptome annotation. A total of 22,270 unigenes were assigned into three main categories: Cellular component, Molecular function, and Biological process. The top 50 represented terms were represented.

**Additional file 11:** Summary of pairs of putative orthologues between sand rice and sugar beet. Additional file 11a, Top BLASTx results of sand rice unigenes versus sugar beet proteins. Additional file 11b,



Top tBLASTn results of sugar beet proteins versus sand rice unigenes. Additional file 11c, Results of pairs of putative orthologs between sand rice and sugar beet. Additional file 11d, GO annotations for sand rice unigenes with sugar beet orthologs. A total of 11,581 unigenes was assigned with at least one GO term. Additional file 11e, Statistical summary of GO categories for doublet unigenes. Additional file 11f, Swissprot and Nr annotations of 782 unigenes categorized into response to salt stress term.

**Additional file 12: Thermotolerance assays.** (A) Sand rice seedlings were exposed to 50°C for 3 h in dark and then moved back to greenhouse to recovery for 7 days. The upper panel was SPT ecotype and the bottom panel was NM ecotype. (B) Quinoa and barley (C) seedlings were exposed to the same heat shock treatment.

**Additional file 13: Summary of candidate genes in sand rice transcriptome.** Additional file 13a, Swissprot and Nr annotations of the 1000 most highly expressed unigenes. Additional file 13b, The 26 putative kinase among the 1000 most highly expressed unigenes. There are 19 unigenes with orthologs in *Arabidopsis*. Additional file 13c, The 24 putative transcription factors among the 1000 most highly expressed unigenes. There are 21 unigenes with orthologs in *Arabidopsis*. Additional file 13d, Statistical summary of GO categories of the 1000 most highly expressed unigenes. Additional file 13e, Swissprot and Nr annotations of 43 unigenes categorized into response to heat term. The putative HSPs are highlighted in yellow. Additional file 13f, Summary of 33 putative HSP unigenes with RBH in *Arabidopsis*. The HSP genes list and subcellular location are derived from Finka et al. [50]. The twelve unigenes include into the top 1000 accumulated unigenes are showed with red font and seven unigene assigned into response to heat term are highlighted in purple. Additional file 13g, Summary of 12 putative HSF unigenes with RBH in *Arabidopsis*. Additional file 13h, Summary of possible heat stress-related and -specific genes in sand rice transcriptome. The *Arabidopsis* genes information was derived from Ma et al. [57,58]. Additional file 13i, Summary of possible multiple stress specific genes in sand rice transcriptome. The *Arabidopsis* genes information was derived from Sewelam et al. [62]. The unigenes included in the top 1000 expressed category were highlighted in yellow.

**Additional file 14: Detection of heat stress candidate genes by qRT-PCR.** Sand rice seedlings with five leaves were subjected to heat stress (50°C) treatment and the control condition for 3 h, and then RNA was extracted from normal and heat-stressed leaves to perform qRT-PCR. The expression levels of candidates were normalized relative to that of *Actin 2* (comp237782\_c0) and the levels of candidates in normal leaves were set to 1.0. Each RNA sample was assayed in triplicates and two independently biological repeats were conducted. (A) *SnRK2.4*; (B) *HsfA1b*; (C-E) *HSPs*; (F) heat stress-related gene; (G) heat stress-specific genes (C, E, and G); (H) *LTP4*.

**Additional file 15: Primers for the validation of assembly quality and the verification of candidate genes.**

#### Abbreviations

GO: Gene ontology; RBH: Reciprocal best hits; MBF1c: Transcriptional coactivator multiprotein bridging factor 1c; HSP: Heat-shock protein; HSF: Heat-shock transcription factors.

#### Competing interests

The authors declared that no competing interests exist.

#### Authors' contributions

PZ, GC, and TG conceived and designed the experiments. PZ, YS, and XZ performed the experiments. PZ, SCG, GC, and TG analyzed the data. PZ and GC drafted the manuscript and TG revised the manuscript. XZ and XFM contributed the reagents and materials. All authors read and approved the final manuscript.

#### Acknowledgements

We thank Dr. Heinz Himmelmayer for his kind supply of sugar beet protein sequence information, thank Dr. Xia Cui for her help for the use of ArcGIS software, and thank Jiwei Zhang for his assistance for qRT-PCR. This work was supported by one of National Basic Research Program of China (973 Program, 2013CB429904), by National Natural Science Foundation of China (No. 41201048 and 31170369), by Natural Science Foundation (No.1208RJA244)

and Innovation Research Group Fund (1308RJA002) of Gansu Province, China, and by Grant 29Y127E71 from the "One Hundred Talents" Project of the Chinese Academy of Sciences. TG group research is funded in part by a grant from the Spanish ministry of Economy and Competitiveness (BIO2012-37161), a Grant from the Qatar National Research Fund grant (NPRP 5-298-3-086), and a grant from the European Research Council under the European Union's Seventh Framework Programme (FP/2007-2013)/ERC (Grant Agreement n. ERC-2012-StG-310325).

#### Author details

<sup>1</sup>Key Laboratory of Stress Physiology and Ecology in Cold and Arid Regions, Gansu Province, Cold and Arid Regions Environmental and Engineering Research Institute, Chinese Academy of Sciences, Lanzhou 730000, People's Republic of China. <sup>2</sup>Shapotou Desert Research and Experimental Station, Cold and Arid Regions Environmental and Engineering Research Institute, Chinese Academy of Sciences, Lanzhou 730000, People's Republic of China. <sup>3</sup>Bioinformatics and Genomics Programme, Centre for Genomic Regulation (CRG), Dr. Aiguader, 88, 08003 Barcelona, Spain. <sup>4</sup>Universitat Pompeu Fabra (UPF), 08003 Barcelona, Spain. <sup>5</sup>Yeast and Basidiomycete Research Group, CBS Fungal Biodiversity Centre, Uppsalalaan 8, 3584 LT Utrecht, The Netherlands. <sup>6</sup>Institució Catalana de Recerca i Estudis Avançats (ICREA), Pg. Lluís Companys 23, 08010 Barcelona, Spain.

Received: 25 May 2014 Accepted: 29 September 2014

Published: 7 October 2014

#### References

1. Lobell DB, Gourdji SM: **The influence of climate change on global crop productivity.** *Plant Physiol* 2012, **160**(4):1686–1697.
2. Lobell DB, Schlenker W, Costa-Roberts J: **Climate trends and global crop production since 1980.** *Science* 2011, **333**(6042):616–620.
3. McCouch S, Crop Wild Relative Group: **Feeding the future.** *Nature* 2013, **499**(7456):23–24.
4. Tester M, Langridge P: **Breeding technologies to increase crop production in a changing world.** *Science* 2010, **327**(5967):818–822.
5. Wheeler T, von Braun J: **Climate change impacts on global food security.** *Science* 2013, **341**(6145):508–513.
6. Khoury CK, Bjorkman AD, Dempewolf H, Ramirez-Villegas J, Guarino L, Jarvis A, Rieseberg LH, Struik PC: **Increasing homogeneity in global food supplies and the implications for food security.** *Proc Natl Acad Sci U S A* 2014, **111**(11):4001–4006.
7. Wang J, Kallman T, Liu J, Guo Q, Wu Y, Lin K, Lascoux M: **Speciation of two desert poplar species triggered by Pleistocene climatic oscillations.** *Hereditas* 2014, **112**(2):156–164.
8. Wang Q, Abbott RJ, Yu QS, Lin K, Liu JQ: **Pleistocene climate change and the origin of two desert plant species, *Pugionium comutum* and *Pugionium dolabratum* (Brassicaceae), in northwest China.** *New Phytol* 2013, **199**(1):277–287.
9. McNeely JA: **Biodiversity in arid regions: values and perceptions.** *J Arid Environ* 2003, **54**(1):61–70.
10. Yates SA, Chernukhin I, Alvarez-Fernandez R, Bechtold U, Baeshen M, Baeshen N, Mutwakil MZ, Sabir J, Lawson T, Mullineaux PM: **The temporal foliar transcriptome of the perennial C3 desert plant *Rhazya stricta* in its natural environment.** *BMC Plant Biol* 2014, **14**:2.
11. Gutterman Y: **Minireview: Survival adaptations and strategies of annuals occurring in the Judean and Negev Deserts of Israel.** *Isr J Plant Sci* 2002, **50**(3):165–175.
12. Ma T, Wang J, Zhou G, Yue Z, Hu Q, Chen Y, Liu B, Qiu Q, Wang Z, Zhang J, Wang K, Jiang D, Gou C, Yu L, Zhan D, Zhou R, Luo W, Ma H, Yang Y, Pan S, Fang D, Luo Y, Wang X, Wang G, Wang J, Wang Q, Lu X, Chen Z, Liu J, Lu Y, et al.: **Genomic insights into salt adaptation in a desert poplar.** *Nat Commun* 2013, **4**:2797.
13. Qiu Q, Ma T, Hu Q, Liu B, Wu Y, Zhou H, Wang Q, Wang J, Liu J: **Genome-scale transcriptome analysis of the desert poplar, *Populus euphratica*.** *Tree Physiol* 2011, **31**(4):452–461.
14. Shi Y, Yan X, Zhao P, Yin H, Zhao X, Xiao H, Li X, Chen G, Ma X-F: **Transcriptomic Analysis of a Tertiary Relict Plant, Extreme Xerophyte *Reaumuria songorica* to Identify Genes Related to Drought Adaptation.** *PLoS One* 2013, **8**(5):e63993.
15. Pang T, Ye CY, Xia XL, Yin WL: **De novo sequencing and transcriptome analysis of the desert shrub, *Ammopiptanthus mongolicus*, during cold acclimation using Illumina/Solexa.** *BMC Genomics* 2013, **14**:15.
16. Zhou Y, Gao F, Liu R, Feng J, Li H: **De novo sequencing and analysis of root transcriptome using 454 pyrosequencing to discover putative**



- genes associated with drought tolerance in *Ammopiptanthus mongolicus*. *BMC Genomics* 2012, **13**:266.
17. Chen G, Zhao J, Zhao X, Zhao P, Duan R, Nevo E, Ma X: **A psammophyte *Agriophyllum squarrosum* (L.) Moq.: a potential food crop.** *Genet Res Crop Ev* 2014, **61**(3):669–676.
  18. Gao Q: **The “grass seed” is *Agriophyllum squarrosum* in Dunhuang manuscripts.** *J Dunhuang Stud* 2002, **42**:43–44 (In Chinese).
  19. Grabherr MG, Haas BJ, Yassour M, Levin JZ, Thompson DA, Amit I, Adiconis X, Fan L, Raychowdhury R, Zeng Q, Chen Z, Mauceli E, Hacohen N, Gnirke A, Rhind N, di Palma F, Birren BW, Nusbaum C, Lindblad-Toh K, Friedmann N, Regev A: **Full-length transcriptome assembly from RNA-Seq data without a reference genome.** *Nat Biotechnol* 2011, **29**(7):644–U130.
  20. Chen X, Zhu W, Azam S, Li H, Zhu F, Li H, Hong Y, Liu H, Zhang E, Wu H, Yu S, Zhou G, Li S, Zhong N, Wen S, Li X, Knapp SJ, Ozias-Akins P, Varshney RK, Liang X: **Deep sequencing analysis of the transcriptomes of peanut aerial and subterranean young pods identifies candidate genes related to early embryo abortion.** *Plant Biotechnol J* 2013, **11**(1):115–127.
  21. Dohm JC, Minoche AE, Holtgräwe D, Capella-Gutiérrez S, Zakrzewski F, Tafer H, Rupp O, Sörensen TR, Stracke R, Reinhardt R, Goesmann A, Kraft T, Schulz B, Stadler PF, Schmidt T, Gabaldón T, Leirach H, Weisshaar B, Himmelbauer H: **The genome of the recently domesticated crop plant sugar beet (*Beta vulgaris*).** *Nature* 2014, **505**(7484):546–549.
  22. Liu MY, Qiao GR, Jiang J, Yang HQ, Xie LH, Xie JZ, Zhuo RY: **Transcriptome Sequencing and De Novo Analysis for Ma Bamboo (*Dendrocalamus latiflorus* Munro) Using the Illumina Platform.** *Plos One* 2012, **7**(10):11.
  23. Zhang XM, Zhao L, Larson-Rabin Z, Li DZ, Guo ZH: **De Novo Sequencing and Characterization of the Floral Transcriptome of *Dendrocalamus latiflorus* (Poaceae: Bambusoideae).** *Plos One* 2012, **7**(8):13.
  24. Burleigh JG, Bansal MS, Eulenstein O, Hartmann S, Wehe A, Vision TJ: **Genome-Scale Phylogenetics: Inferring the Plant Tree of Life from 18,896 Gene Trees.** *Systematic Biol* 2011, **60**(2):117–125.
  25. Soltis DE, Smith SA, Cellinese N, Wurdack KJ, Tank DC, Brockington SF, Refulio-Rodriguez NF, Walker JB, Moore MJ, Carlswald BS, Bell CD, Latvis M, Crawley S, Black C, Diouf D, Xi Z, Rushworth CA, Gitzendanner MA, Sytsma KJ, Qiu YL, Hilu KW, Davis CC, Sanderson MJ, Beaman RS, Olmstead RG, Judd WS, Donoghue MJ, Soltis PS: **Angiosperm Phylogeny: 17 Genes, 640 Taxa.** *Am J Bot* 2011, **98**(4):704–730.
  26. Jimenez-Guri E, Huerta-Cepas J, Cozzuto L, Wotton KR, Kang H, Himmelbauer H, Roma G, Gabaldón T, Jaeger J: **Comparative transcriptomics of early dipteran development.** *BMC Genomics* 2013, **14**:123.
  27. Yang L, Ma C, Wang L, Chen S, Li H: **Salt stress induced proteome and transcriptome changes in sugar beet monosomic addition line M14.** *J Plant Physiol* 2012, **169**(9):839–850.
  28. Yang L, Zhang Y, Zhu N, Koh J, Ma C, Pan Y, Yu B, Chen S, Li H: **Proteomic analysis of salt tolerance in sugar beet monosomic addition line M14.** *J Proteome Res* 2013, **12**(11):4931–4950.
  29. Barshis DJ, Ladner JT, Oliver TA, Seneca FO, Traylor-Knowles N, Palumbi SR: **Genomic basis for coral resilience to climate change.** *Proc Natl Acad Sci U S A* 2013, **110**(4):1387–1392.
  30. Bedulina DS, Evgen'ev MB, Timofeyev MA, Protopopova MV, Garbus DG, Pavlichenko W, Luckenbach T, Shatilina ZM, Axenov-Gribanov DV, Gurkov AN, Sokolova IM, Zatssepina OG: **Expression patterns and organization of the hsp70 genes correlate with thermotolerance in two congeneric endemic amphipod species (*Eulimnogammarus cyaneus* and *E. verrucosus*) from Lake Baikal.** *Mol Ecol* 2013, **22**(5):1416–1430.
  31. Geisel N: **Constitutive versus Responsive Gene Expression Strategies for Growth in Changing Environments.** *Plos One* 2011, **6**(11):11.
  32. Juenger TE, Sen S, Bray E, Stahl E, Wayne T, McKay J, Richards JH: **Exploring genetic and expression differences between physiologically extreme ecotypes: comparative genomic hybridization and gene expression studies of *Kas-1* and *Tsu-1* accessions of *Arabidopsis thaliana*.** *Plant Cell Environ* 2010, **33**(8):1268–1284.
  33. Oh D-H, Hong H, Lee SY, Yun D-J, Bohnert HJ, Dassanayake M: **Genome Structures and Transcriptomes Signify Niche Adaptation for the Multiple-Ion-Tolerant Extremophyte *Schrenkiella parvula*.** *Plant Physiol* 2014, **164**(4):2123–2138.
  34. Becher M, Talke IN, Krall L, Kramer U: **Cross-species microarray transcript profiling reveals high constitutive expression of metal homeostasis genes in shoots of the zinc hyperaccumulator *Arabidopsis halleri*.** *Plant J* 2004, **37**(2):251–268.
  35. Ingle RA, Mugford ST, Rees JD, Campbell MM, Smith JAC: **Constitutively high expression of the histidine biosynthetic pathway contributes to nickel tolerance in hyperaccumulator plants.** *Plant Cell* 2005, **17**(7):2089–2106.
  36. van de Mortel JE, Almar Villanueva L, Schat H, Kwekkeboom J, Coughlan S, Moerland PD, van Themaat EVL, Koornneef M, Aarts MGM: **Large expression differences in genes for iron and zinc homeostasis, stress response, and lignin biosynthesis distinguish roots of *Arabidopsis thaliana* and the related metal hyperaccumulator *Thlaspi caerulescens*.** *Plant Physiol* 2006, **142**(3):1127–1147.
  37. Dal Santo S, Stampfl H, Krasensky J, Kempa S, Gibon Y, Petutschnig E, Rozhon W, Heuck A, Clausen T, Jonak C: **Stress-induced GSK3 regulates the redox stress response by phosphorylating glucose-6-phosphate dehydrogenase in *Arabidopsis*.** *Plant Cell* 2012, **24**(8):3380–3392.
  38. Fujii H, Verslues PE, Zhu JK: ***Arabidopsis* decuple mutant reveals the importance of SnRK2 kinases in osmotic stress responses in vivo.** *Proc Natl Acad Sci U S A* 2011, **108**(4):1717–1722.
  39. McLoughlin F, Galvan-Ampudia CS, Julkowska MM, Caarls L, van der Does D, Lauriere C, Munnik T, Haring MA, Testerink C: **The Snf1-related protein kinases SnRK2.4 and SnRK2.10 are involved in maintenance of root system architecture during salt stress.** *Plant J* 2012, **72**(3):436–449.
  40. Umezawa T, Yoshida R, Maruyama K, Yamaguchi-Shinozaki K, Shinozaki K: **SRK2C, a SNF1-related protein kinase 2, improves drought tolerance by controlling stress-responsive gene expression in *Arabidopsis thaliana*.** *Proc Natl Acad Sci U S A* 2004, **101**(49):17306–17311.
  41. Stimberg P, Furner IJ, Ottoline Leyser HM: **MAX2 participates in an SCF complex which acts locally at the node to suppress shoot branching.** *Plant J* 2007, **50**(1):80–94.
  42. Wang Y, Zhang WZ, Song LF, Zou JJ, Su Z, Wu WH: **Transcriptome analyses show changes in gene expression to accompany pollen germination and tube growth in *Arabidopsis*.** *Plant Physiol* 2008, **148**(3):1201–1211.
  43. Kulik A, Anielska-Mazur A, Bucholc M, Koen E, Szymanska K, Zmienko A, Krzywinska E, Wawer I, McLoughlin F, Ruszkowski D, Figlerowicz M, Testerink C, Skłodowska A, Wendehenne D, Dobrowolska G: **SNF1-related protein kinases type 2 are involved in plant responses to cadmium stress.** *Plant Physiol* 2012, **160**(2):868–883.
  44. Suzuki N, Bajad S, Shuman J, Shulaev V, Mittler R: **The transcriptional co-activator MBF1c is a key regulator of thermotolerance in *Arabidopsis thaliana*.** *J Biol Chem* 2008, **283**(14):9269–9275.
  45. Suzuki N, Rizhsky L, Liang H, Shuman J, Shulaev V, Mittler R: **Enhanced tolerance to environmental stress in transgenic plants expressing the transcriptional coactivator multiprotein bridging factor 1c.** *Plant Physiol* 2005, **139**(3):1313–1322.
  46. Suzuki N, Sejima H, Tam R, Schlauch K, Mittler R: **Identification of the MBF1 heat-response regulon of *Arabidopsis thaliana*.** *Plant J* 2011, **66**(5):844–851.
  47. Arce DP, Godoy AV, Tsuda K, Yamazaki K, Valle EM, Iglesias MJ, Di Mauro MF, Casalongo CA: **The analysis of an *Arabidopsis* triple knock-down mutant reveals functions for MBF1 genes under oxidative stress conditions.** *J Plant Physiol* 2010, **167**(3):194–200.
  48. Tojo T, Tsuda K, Yoshizumi T, Ikeda A, Yamaguchi J, Matsui M, Yamazaki K: ***Arabidopsis* MBF1s control leaf cell cycle and its expansion.** *Plant Cell Physiol* 2009, **50**(2):254–264.
  49. Saidi Y, Finka A, Goloubinoff P: **Heat perception and signalling in plants: a tortuous path to thermotolerance.** *New Phytol* 2011, **190**(3):556–565.
  50. Finka A, Mattoo RU, Goloubinoff P: **Meta-analysis of heat- and chemically upregulated chaperone genes in plant and human cells.** *Cell Stress Chaperon* 2011, **16**(1):15–31.
  51. von Koskull-Doring P, Scharf KD, Nover L: **The diversity of plant heat stress transcription factors.** *Trends Plant Sci* 2007, **12**(10):452–457.
  52. Scharf KD, Berberich T, Ebersberger I, Nover L: **The plant heat stress transcription factor (Hsf) family: structure, function and evolution.** *Bioch Biophys Acta* 2012, **1819**(2):104–119.
  53. Liu HC, Chang YY: **Acquired thermotolerance independent of heat shock factor A1 (HsfA1), the master regulator of the heat stress response.** *Plant Signal Behav* 2012, **7**(5):547–550.
  54. Liu HC, Chang YY: **Common and distinct functions of *Arabidopsis* class A1 and A2 heat shock factors in diverse abiotic stress responses and development.** *Plant Physiol* 2013, **163**(1):276–290.
  55. Liu HC, Liao HT, Chang YY: **The role of class A1 heat shock factors (HsFA1s) in response to heat and other stresses in *Arabidopsis*.** *Plant Cell Environ* 2011, **34**(5):738–751.

56. Yoshida T, Ohama N, Nakajima J, Kidokoro S, Mizoi J, Nakashima K, Maruyama K, Kim JM, Seki M, Todaka D, Osakabe Y, Sakuma Y, Schöffl F, Shinozaki K, Yamaguchi-Shinozaki K: **Arabidopsis HsfA1 transcription factors function as the main positive regulators in heat shock-responsive gene expression.** *Mol Genet Genomics* 2011, **286**(5-6):321-332.
57. Ma C, Xin M, Feldmann KA, Wang X: **Machine learning-based differential network analysis: a study of stress-responsive transcriptomes in Arabidopsis.** *Plant Cell* 2014, **26**(2):520-537.
58. Ma C, Xin M, Feldmann KA, Wang X: **Data from: Machine learning-based differential network analysis: a study of stress-responsive transcriptomes in Arabidopsis thaliana.** In *Dryad Data Repository*. 2014.
59. Mittler R: **Abiotic stress, the field environment and stress combination.** *Trends Plant Sci* 2006, **11**(1):15-19.
60. Rasmussen S, Barah P, Suarez-Rodriguez MC, Bressendorff S, Friis P, Costantino P, Bones AM, Nielsen HB, Mundy J: **Transcriptome responses to combinations of stresses in Arabidopsis.** *Plant Physiol* 2013, **161**(4):1783-1794.
61. Rizhsky L, Liang H, Shuman J, Shulaev V, Davletova S, Mittler R: **When defense pathways collide. The response of Arabidopsis to a combination of drought and heat stress.** *Plant Physiol* 2004, **134**(4):1683-1696.
62. Sewelam N, Oshima Y, Mitsuda N, Ohme-Takagi M: **A Step towards Understanding Plant Responses to Multiple Environmental Stresses: a Genome-wide Study.** *Plant Cell Environ* 2014, **37**(9):2024-2035.
63. Suzuki N, Rivero RM, Shulaev V, Blumwald E, Mittler R: **Abiotic and biotic stress combinations.** *New Phytol* 2014, **203**(1):32-43.
64. Gutterman Y: **Environmental factors and survival strategies of annual plant species in the Negev Desert.** *Isr Plant Spec Biol* 2000, **15**(2):113-125.
65. Anderson JT, Panetta AM, Mitchell-Olds T: **Evolutionary and ecological responses to anthropogenic climate change: update on anthropogenic climate change.** *Plant Physiol* 2012, **160**(4):1728-1740.
66. Bokszczanin KL, Solanaceae Pollen Thermotolerance Initial Training Network C, Fragkostefanakis S: **Perspectives on deciphering mechanisms underlying plant heat stress response and thermotolerance.** *Front Plant Sci* 2013, **4**:315.
67. Oh D-H, Dassanayake M, Bohnert HJ, Cheeseman JM: **Life at the extreme: lessons from the genome.** *Genome Biol* 2012, **13**(3):241.
68. Barah P, Jayavelu ND, Mundy J, Bones AM: **Genome scale transcriptional response diversity among ten ecotypes of Arabidopsis thaliana during heat stress.** *Front Plant Sci* 2013, **4**:532.
69. Wang Q, Chen H-k, Wang J-l: **Karyotype analysis of the chromosome of Agriophyllum squarrosum.** *Northern Hortic* 2013, **1**:114-116 (In Chinese).
70. Xiong LM, Schumaker KS, Zhu JK: **Cell signaling during cold, drought, and salt stress.** *Plant Cell* 2002, **14**:S165-S183.
71. Zhu JK: **Salt and drought stress signal transduction in plants.** *Annu Rev Plant Biol* 2002, **53**:247-273.
72. Kim JS, Jung HJ, Lee HJ, Kim KA, Goh CH, Woo Y, Oh SH, Han YS, Kang H: **Glycine-rich RNA-binding protein 7 affects abiotic stress responses by regulating stomata opening and closing in Arabidopsis thaliana.** *Plant J* 2008, **55**(3):455-466.
73. Kim JY, Park SJ, Jang B, Jung CH, Ahn SJ, Goh CH, Cho K, Han O, Kang H: **Functional characterization of a glycine-rich RNA-binding protein 2 in Arabidopsis thaliana under abiotic stress conditions.** *Plant J* 2007, **50**(3):439-451.
74. Kim YO, Pan S, Jung CH, Kang H: **A zinc finger-containing glycine-rich RNA-binding protein, atRZ-1a, has a negative impact on seed germination and seedling growth of Arabidopsis thaliana under salt or drought stress conditions.** *Plant Cell Physiol* 2007, **48**(8):1170-1181.
75. Kwak KJ, Kim YO, Kang H: **Characterization of transgenic Arabidopsis plants overexpressing GR-RBP4 under high salinity, dehydration, or cold stress.** *J Exp Bot* 2005, **56**(421):3007-3016.
76. Mortazavi A, Williams BA, McCue K, Schaeffer L, Wold B: **Mapping and quantifying mammalian transcriptomes by RNA-Seq.** *Nat Methods* 2008, **5**(7):621-628.
77. Conesa A, Gotz S, Garcia-Gomez JM, Terol J, Talon M, Robles M: **Blast2GO: a universal tool for annotation, visualization and analysis in functional genomics research.** *Bioinformatics* 2005, **21**(18):3674-3676.
78. Slater GS, Birney E: **Automated generation of heuristics for biological sequence comparison.** *BMC Bioinform* 2005, **6**:31.
79. Katoh K, Standley DM: **MAFFT Multiple Sequence Alignment Software Version 7: Improvements in Performance and Usability.** *Mol Biol Evol* 2013, **30**(4):772-780.
80. Capella-Gutierrez S, Silla-Martinez JM, Gabaldon T: **trimAl: a tool for automated alignment trimming in large-scale phylogenetic analyses.** *Bioinformatics* 2009, **25**(15):1972-1973.
81. Criscuolo A, Gribaldo S: **BMGE (Block Mapping and Gathering with Entropy): a new software for selection of phylogenetic informative regions from multiple sequence alignments.** *BMC Evol Biol* 2010, **10**:210.
82. Capella-Gutierrez S, Marcet-Houben M, Gabaldon T: **Phylogenomics supports microsporidia as the earliest diverging clade of sequenced fungi.** *BMC Biol* 2012, **10**:47.
83. Guindon S, Dufayard J-F, Lefort V, Anisimova M, Hordijk W, Gascuel O: **New Algorithms and Methods to Estimate Maximum-Likelihood Phylogenies: Assessing the Performance of PhyML 3.0.** *Systematic Biol* 2010, **59**(3):307-321.
84. Huerta-Cepas J, Dopazo J, Gabaldon T: **ETE: a python Environment for Tree Exploration.** *BMC Bioinform* 2010, **11**:24.
85. Shimodaira H, Hasegawa M: **CONSEL: for assessing the confidence of phylogenetic tree selection.** *Bioinformatics* 2001, **17**(12):1246-1247.

doi:10.1186/1471-2164-15-872

**Cite this article as:** Zhao et al.: Transcriptomic analysis of a psammophyte food crop, sand rice (*Agriophyllum squarrosum*) and identification of candidate genes essential for sand dune adaptation. *BMC Genomics* 2014 **15**:872.

**Submit your next manuscript to BioMed Central and take full advantage of:**

- Convenient online submission
- Thorough peer review
- No space constraints or color figure charges
- Immediate publication on acceptance
- Inclusion in PubMed, CAS, Scopus and Google Scholar
- Research which is freely available for redistribution

Submit your manuscript at  
www.biomedcentral.com/submit

