



Review

# Inflammation as A Precursor of Atherothrombosis, Diabetes and Early Vascular Aging

Elena Barbu, Mihaela-Roxana Popescu \*, Andreea-Catarina Popescu \*<sup>†</sup> and Serban-Mihai Balanescu <sup>†</sup>

Department of Cardiology, Elias Emergency University Hospital, Carol Davila University of Medicine and Pharmacy, 011461 Bucharest, Romania; elena.lechea@drd.umfcd.ro (E.B.); serban.balanescu@umfcd.ro (S.-M.B.)

\* Correspondence: mihaela-roxana.popescu@umfcd.ro (M.-R.P.); andreea.popescu@umfcd.ro (A.-C.P.); Tel.: +40-21-316-1600 (ext. 172) (M.-R.P.)

**Abstract:** Vascular disease was for a long time considered a disease of the old age, but it is becoming increasingly clear that a cumulus of factors can cause early vascular aging (EVA). Inflammation plays a key role in vascular stiffening and also in other pathologies that induce vascular damage. There is a known and confirmed connection between inflammation and atherosclerosis. However, it has taken a long time to prove the beneficial effects of anti-inflammatory drugs on cardiovascular events. Diabetes can be both a product of inflammation and a cofactor implicated in the progression of vascular disease. When diabetes and inflammation are accompanied by obesity, this ominous trifecta leads to an increased incidence of atherothrombotic events. Research into earlier stages of vascular disease, and documentation of vulnerability to premature vascular disease, might be the key to success in preventing clinical events. Modulation of inflammation, combined with strict control of classical cardiovascular risk factors, seems to be the winning recipe. Identification of population subsets with a successful vascular aging (supernormal vascular aging—SUPERNOVA) pattern could also bring forth novel therapeutic interventions.



**Citation:** Barbu, E.; Popescu, M.-R.; Popescu, A.-C.; Balanescu, S.-M. Inflammation as A Precursor of Atherothrombosis, Diabetes and Early Vascular Aging. *Int. J. Mol. Sci.* **2022**, *23*, 963. <https://doi.org/10.3390/ijms23020963>

Academic Editor: Ida Daniela Perrotta

Received: 31 December 2021

Accepted: 13 January 2022

Published: 16 January 2022

**Publisher's Note:** MDPI stays neutral with regard to jurisdictional claims in published maps and institutional affiliations.



**Copyright:** © 2022 by the authors. Licensee MDPI, Basel, Switzerland. This article is an open access article distributed under the terms and conditions of the Creative Commons Attribution (CC BY) license (<https://creativecommons.org/licenses/by/4.0/>).

**Keywords:** atherothrombosis; inflammation; obesity; diabetes; klotho; NLPR3; visfatin; vascular senescence; COVID-19; SUPERNOVA

## 1. Introduction

In addition to the well-known common risk factors for cardiovascular disease (CVD), such as hypertension, obesity, dyslipidemia and smoking, inflammation plays an important role in the pathogenesis of diabetes and associated metabolic disorders, as well as in the pathogenesis of atherosclerosis and vulnerable atheroma [1,2]. There is a permanent relationship of interdependence between systemic inflammation, diabetes and cardiovascular atherosclerotic disease, so it is becoming increasingly clear that, in addition to conventional therapy, future studies need to focus on models of inhibition on various levels in inflammation pathways [3]. Inflammation has a key role both in the progression of the disease and in its consequences and complications once installed. However, a specific anti-inflammatory treatment is not yet recommended for atherosclerotic disease and its acute complications or for diabetes. Pleiotropic therapies, such as statins, with a secondary effect on predominantly local inflammation, have been shown to be superior due to this effect [4–6]. High cardiovascular risk is associated with a (C reactive protein) CRP > 3 mg/L, compared with patients with a low baseline CRP [7].

The risk of CVD is significantly increased in patients with diabetes, which can be both a cause and an effect of inflammation. Moreover, CVD usually occurs a decade or two earlier in people with diabetes, and the pattern of the disease is more aggressive [8–10]. This observation led to the idea that aging, especially vascular aging, occurs prematurely in patients with diabetes. Aging is a complex biological process characterized by a progressive decline of multiorgan structure and function, with vascular remodeling,

endothelial dysfunction and loss of vascular compliance as common features [11]. Along with other multiple molecular changes, a relevant feature of aging is chronic low-grade inflammation [12]. This is now termed “Inflammaging”. Type 2 diabetes mellitus (T2DM) is characterized by multiple conditions among the elderly, probably correlated with inflammaging [13–16]. Possible pathways of inflammaging involve visceral obesity, cellular senescence, NLRP3 (Nucleotide-binding oligomerization domain, Leucine rich Repeat and Pyrin domain containing 3) inflammasome activation and oxidative stress [17].

What do diabetes and vascular aging have in common? Diabetes is a complex metabolic disorder. Altered glucose tolerance and hyperglycemia are the main features and are the result of an absolute or relative insulin deficiency or tissue resistance to insulin action [18]. Chronic hyperglycemia associated with diabetes can lead to organ dysfunctions that can involve the retina, kidneys, heart, nerves and blood vessels [19,20]. Common risk factors of both diabetes and CVD have drawn attention to the fact that, at least on some levels in the pathogenic pathways, the mechanisms are similar, interfere or are additional [3]. These common risk factors and features lead to the possibility, at least in terms of prevention and primary interventions, that these two complex affections can be regarded as a unit, linked by common inflammatory mechanisms. Metabolic syndrome is defined as an aggregate of major risk factors for CVD and diabetes, such as visceral obesity, atherogenic dyslipidemia, glycemic disorders and hypertension, secondary to endothelial dysfunction [13–15]. Abdominal obesity is the most frequently encountered feature. Visceral obesity often leads to T2DM by associating an increased need for insulin with resistance to its effects, leading to secondary hyperinsulinemia, and over time, to beta cell dysfunction [21]. Adding to these disorders, the secretion of adipocyte cytokines (adipokines) and chronic inflammation sustained by obesity promotes vascular endothelial dysfunction, high blood pressure and atherogenic dyslipidemia. All of these mechanisms are involved in the development of cardiovascular atherosclerotic disease [22].

Research is generally focused on the detection of deleterious factors for the identification of patients at risk and also for development of therapeutic methods. These methods are directed predominantly toward the suppression of the deleterious factors. Possible protective factors, more precisely their deficiency or methods of augmentation, are less extensively studied for these conditions. This is probably justified by the primary aim to combat the main pathogenic mechanism based on harmful molecules that create chronic changes in the metabolic balance. However, some patients with diabetes, with the same diabetes disease length, same risk factors, similar control and biological profile, develop cardiovascular complications and others do not, or develop them at a later stage. What worsens the prognosis in some patients is currently being intensively researched through the study of inflammation. Phenotyping the patient at risk should take into account not only the identification of harmful factors, but also the possible protective factors against emerging disease or in the development of complications.

This review aims to describe these protective and deleterious mechanisms at play in vascular disease. We also discuss possible countermeasures concerning not only drugs but also lifestyle changes effective in the management of inflammation. The association between inflammation and diabetes, obesity, premature vascular aging and atherothrombosis in both chronic and acute (e.g., COVID-19) settings is also a topic of interest.

## 2. Inflammation and Atherothrombosis

Inflammation is the main pathophysiologic mechanism leading to initiation, progression and thrombotic complications of atherosclerosis. In opposition to the innate natural defense mechanisms that protect us against external foes, such as those from bacteria or viruses, the immune system may react against various self-antigens. This leads to various chronic conditions, such as auto-immune and auto-inflammatory disease, responsible for morbidity, mortality and disability in modern society. However, the most worldwidespread inflammatory reaction against the inner self is atherosclerosis.

2.1. Inflammation as a Precursor of Atherosclerosis: A “Bird’s Eye View”

Extremely different factors have been identified in initiating and sustaining the inflammatory process of atherosclerosis (Table 1).

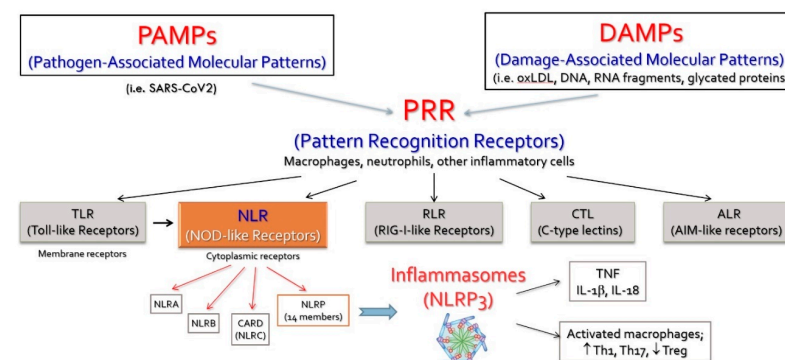
**Table 1.** External or endogenous factors may act as DAMPs or PAMPs to stimulate membrane (TLRs) or cytoplasmic receptors (NLRs) of monocytes, macrophages, neutrophils or dendritic cells. They may trigger inflammasome oligomerization and activate NLRP3 macromolecule.

Environmental Factors	Sympathetic Imbalance	Standard Risk Factors	Hematological Disorders	Hemodynamic Factors	Infection and Chronic Inflammation
Noise	Mental stress (acute and chronic)	LDL, Lp(a), apoB100	CHIP (Clonal Hematopoiesis of Indeterminate Potential)	Abnormal blood flow (low shear stress)	Chronic endotoxemia (“Leaky gut sdr”)
Small particle air pollution	Insomnia and sleep deprivation	Diabetes	Efferocytosis		Gut microbiome
Diet (high fat, high sodium, low fiber)	Afferent renal nerve hyperstimulation	Smoking	Anemia, chronic hypoxia		Chronic infection (i.e., parodontosis)
		Hypertension	High blood viscosity (i.e., polycythemia vera)		
All act as DAMPs or PAMPs → Pattern Recognition Receptors (TLR, NLR)					
Inflammasome (NLRP3) activation					

LDL-low density lipoprotein, Lp(a)-Lipoprotein a, apoB100 -apolipoproteinB100.

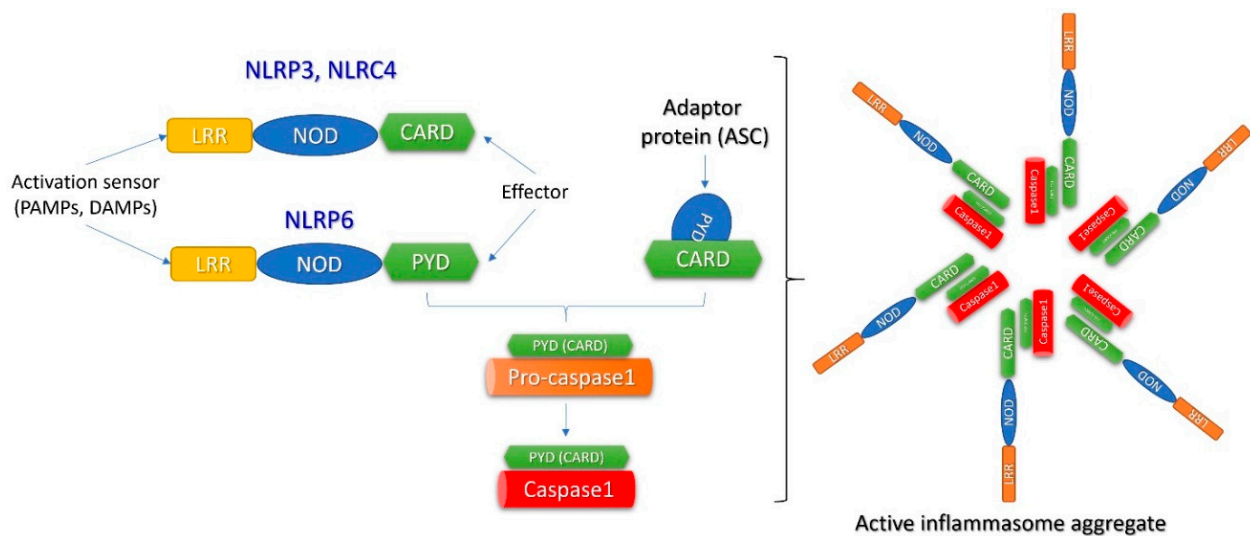
All these factors may be grouped in two different classes. PAMPs (Pathogen-Associated Molecular Patterns) are represented by different molecular components of germs, such as chronic endotoxemia [23,24] or viral ribonucleic acid (RNA) [25,26]. DAMPs (Damage-Associated Molecular Patterns) are related to self-antigens, such as oxidized low density lipoprotein-(ox-LDL), non-stranded deoxyribonucleic acid (DNA) and RNA fragments or glycated proteins [27]. Some of the most fascinating DAMPs are the NETs (Neutrophil Extracellular Traps), either genetically determined, as demonstrated in clonal hematopoiesis of indeterminate potential (CHIP), or simply exposed by activated or dying neutrophils [28]. These are a mesh of destructured DNAstrands liberated form neutrophils, containing tissue factor, myeloperoxidases and other proteinases. They are a major link between innate immunity, inflammation and coagulation resulting in atherothrombosis [29].

Both PAMPs and DAMPs will interact with dedicated receptors widely distributed on inflammatory cells, such as macrophages, neutrophils and dendritic cells. Five classes of these receptors (PRRs—Pattern Recognition Receptors) have been described [30]. They are distributed either on the cell membrane (TLRs—Toll-like Receptors) or in the cytoplasm (NLRs—NOD-like receptors) (Figure 1).



**Figure 1.** The systemic effects of NLRP3 caspase-1-mediated interleukin activation. Interleukin-6 generated by the potent stimulus of IL-1b leads to secretion of acute-phase proteins in the liver, induces endothelial dysfunction and activates smooth muscle cells in arterial media. IL—interleukin; ox-LDL—oxidated LDL molecule; CRP—C-reactive protein; PAI-1—plasminogen activator inhibitor-1. (Reproduced with permission, [31]).

The NLR family consists of fourteen different molecules that have been named as “inflammasomes” [32]. The most studied inflammasome is NLRP3. It exists in the cytoplasm as an inactive monomer (Figure 2). Its intracellular expression is increased by an nuclear factor kappa-light-chain-enhancer of activated B cells (NF- $\kappa$ B) -mediated mechanism after activation of TLRs by DAMPs or PAMPs and/or by Tumor necrosis factor (TNF) receptors stimulated by TNF-alpha (the “priming” process). Subsequently, NLRP3 monomers are oligomerized in the active NLRP3 inflammasome in the “triggering” process (Figure 3) [33]. As far as DAMPs and PAMPs are structurally extremely different, they could not directly interact with the NLRP3 monomers in the cytoplasm to set off their oligomerization. Different activation pathways are investigated for NLRP3 triggering: lysosomal lysis, mitochondrial generation of reactive oxygen species (ROS), calcium inflow or potassium outflow [34].



**Figure 2.** The molecular structure of the inflammasome. This is a large complex multimeric protein consisting of oligomerized NLRP. This consists of a central NOD immune receptor, a leucine-rich repeat (LRR) domain acting as an activation sensor and an effector domain, either a pyrin-containing (PYD) or a caspase activation and recruiting domain—CARD. When activated, the effector domain of NLRP interacts with an adaptor protein (ASC) via a CARD molecule and activates pro-caspase1 into mature caspase1. Pro-caspase1 also has a CARD molecule allowing interaction with the inflammasome. (Reproduced with permission, [31]).

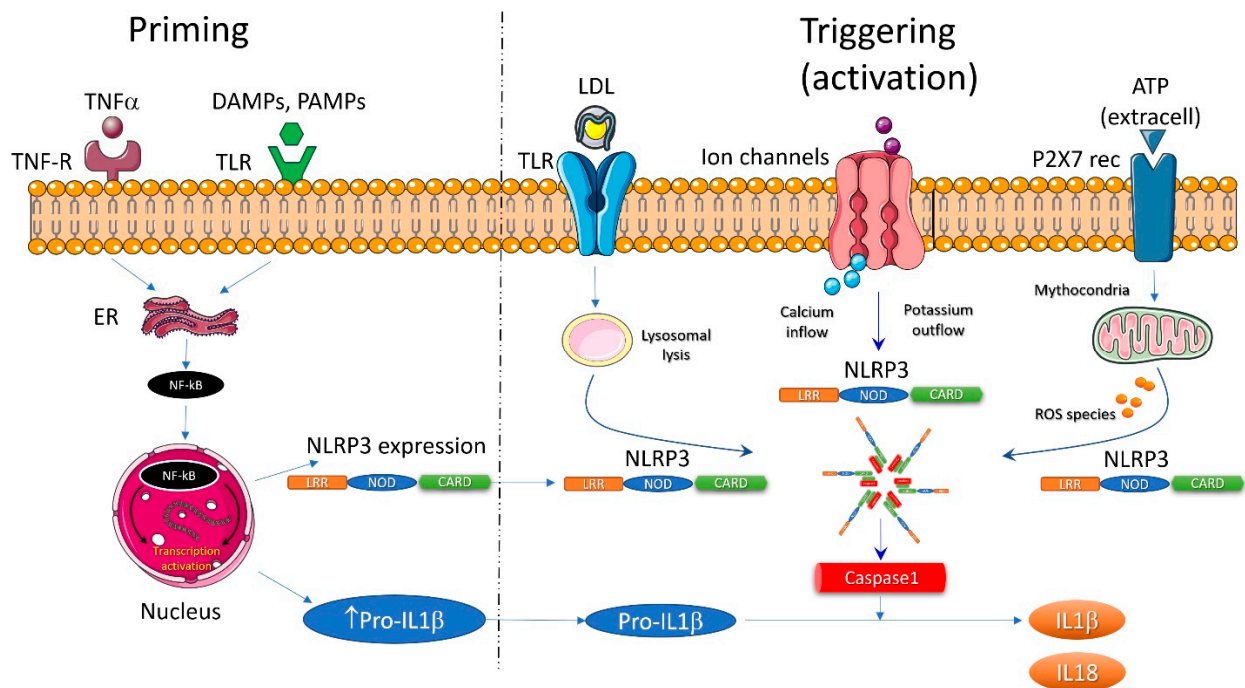
The consequences of NLRP3 activation are many and deleterious. When activated, NLRP3 inflammasome contains caspase-1 that will cleave pro-interleukin-1-beta and pro-interleukin-18 in interleukin-1-beta (IL-1 $\beta$ ) and interleukin-18 (IL-18) [35]. These potent pro-inflammatory cytokines are responsible for inducing pyroptosis, a type of cell death resulting in supplemental inflammation [36].

Both IL-1 $\beta$  and IL-18 stimulate production of interleukin 6 (IL6) from activated macrophages. IL-6 will stimulate hepatocytes into synthesizing CRP, plasminogen activator inhibitor-1 (PAI-1) and fibrinogen, activate endothelial cells to express adhesion molecules and smooth muscle cells in tunica media [37].

Activation of NLRP3 leads to proliferation of macrophages, (T helper type 1 (Th1) and T helper type 17 (Th17) lymphocytes and may amplify serum TNF-alpha concentration [38]. Plasmacytoid dendritic cells found in the lymphoid tissue surrounding the arterial wall may also be activated by the NLRP3 inflammasome and contribute to Th1 and Th17 amplification while inhibiting the anti-inflammatory regulatory T (Treg) lymphocytes [39].

Finally, activated NLRP3 is responsible for generation of more DAMPs in a vicious circle of inflammatory changes [40].





**Figure 3.** The two main steps for full inflammasome activation. Initiation of the process is priming, which leads to increased expression of NLRP3 and pro-IL-1 $\beta$  via nuclear factor-kappa B. This acts as a second messenger for toll-like receptor activation via DAMPs or PAMPs; an alternative pathway is NF- $\kappa$ B stimulation by TNF receptor and TNF  $\alpha$ . Triggering or full activation of the inflammasome is the final oligomerization of NLRP3 with procaspase-1 cleaving properties. It can be induced by intracellular signaling due to increased ROS generation by dysfunctional mitochondria, potassium efflux or calcium influx, or lysosomal lysis after LDL crystal endocytosis. (Reproduced with permission, [31]).

NLRP3 was not only identified in the major inflammatory cells (foam cells, dendritic cells or neutrophils) but also in the dysfunctional endothelium, in myocardial cells or in myocardial interstitial fibroblasts [41].

## 2.2. Atherosclerosis as an Inflammatory Disease

Some of the main DAMPs responsible for inflammation in atherosclerosis are serum lipoproteins. Irrespective of their serum pattern (LDL, Lp(a) or apoB, apoB100-containing lipoproteins are well-known endothelial offenders that initiate the atherosclerotic process.

The main lipoprotein of atherosclerosis, LDL cholesterol, may activate its own specific pattern recognition receptor, the CD36. The internalized LDL-CD36 complex is degraded via lysosomal endocytosis, an intracellular pathway for NLRP3 activation [42]. In reverse, activated NLRP3 inflammasome may dissociate LDL crystals in the cytoplasm of foam cells [43].

In chronic coronary syndromes, NLRP3 is correlated with the severity of coronary atherosclerosis [44]. Patients with coronary atherosclerosis show increased NLRP3 expression in blood monocytes, mainly during an acute coronary event [45]. Myocardial necrosis in acute coronary syndromes releases cellular debris, which may act as DAMPs to activate NLRP3. Myocardial injury due to coronary reperfusion also leads to mitochondrial dysfunction and ROS production, an alternate pathway of inflammasome activation in the cell [46]. As far as inflammasome activation occurs in two phases, it is presumed that in acute coronary syndromes ischemic injury is responsible for priming the NLRP3 and pro-IL-1 $\beta$  by locally released DAMPs. In the second phase, reperfusion triggers inflammasome activation by mitochondrial damage and ROS generation [41].

A recent large gene study enrolled 538,167 subjects and demonstrated that carriers of the intronic NLRP3 variant rs10754555 (a “gain of function” defect) had high levels of CRP and SAA (serum amyloid A) as surrogate markers for inflammation. These subjects had a higher prevalence of cardiovascular events and mortality [47].

Activated NLRP3 is an independent predictor of major adverse cardiovascular events in atherosclerosis and is independently associated with cardiovascular outcome [48]. Data from recent clinical trials suggest that NLRP3–IL1  $\beta$  pathway inhibition may prove beneficial in atherosclerotic CVD [49,50].

Statins reduce NLRP3 expression in blood mononuclear cells of patients with coronary artery disease [51,52]. The effect is assigned to reduction of serum LDL levels but also to a reduction of LDL load of macrophages. LDL efflux pathways may inhibit NLRP3, neutrophil cellular traps formation and may reduce atherogenesis in experimental studies [53]. Colchicine, a potent non-specific anti-inflammatory drug, also lowers NLRP3 expression and serum levels of IL-1 $\beta$  and IL18 in patients with acute coronary syndromes [54]. Significant reduction of inflammation may be one of the “pleiotropic effects” responsible for clinical benefit of statins and colchicine, widely proven in multiple randomized controlled trials (RCTs). The monoclonal antibody canakinumab, an anti-IL-1 $\beta$  agent, demonstrated significant reduction of CRP and improved CV outcome in patients with acute coronary syndromes [55].

### 2.3. Atherosclerosis and Thrombosis: The Inflammatory Link

There is a major interaction between inflammation and thrombosis, all started from DAMPs, PRR activation and NLRP3 triggering. Inflammasomes act as amplification pathways not only for atherogenesis, but also for thrombosis [56].

IL-1 $\beta$  and IL-18 generated by NLRP3-caspase activation enter a self-amplification loop and also induce IL-6 generation by the macrophages. IL-6 stimulates hepatocytes to produce CRP, fibrinogen and PAI-1, releasing them systemically and mediating the propensity for thrombosis. IL-6 directly potentiates another prothrombotic pathway mediated by JAK1/TYK2 membrane receptor leading to thrombocytosis and procoagulant activity [57].

DAMPs as ox-LDL activate platelets contributing to development of a systemic prothrombotic state [58]. LDL platelet complexes interact to activate monocytes and amplify inflammation [59].

However, among all DAMPs, the most relevant ones for “inflammatory thrombosis” are the NETs [29]. They act with the platelets and monocytes to induce thrombosis. The degenerated DNA mesh, extruded by either genetically programmed or dying neutrophils, acts as thrombosis promoter at the endothelial interface [60]. NETs may contain and activate tissue factor to initiate coagulation by the extrinsic pathway. They also directly activate Factor XII to promote contact pathway of clotting. NETs directly activate platelets through their histone content and bind to the von Willebrand factor. Last but not least, NETs contain myeloperoxidases that may cleave coagulation factors and inhibit endogenous anticoagulants [61].

Above all, inflammatory pathways may activate thrombosis in atherosclerosis but also in immune-mediated inflammatory diseases (a process called immuno-thrombosis), such as systemic lupus erythematosus, rheumatoid arthritis, psoriatic arthritis or inflammatory bowel diseases. [62].

Clinical trials with different agents targeting NLRP3 in atherothrombosis are underway [63,64]. These trials investigate whether blocking inflammatory pathways will result in superior outcomes not only in atherogenesis but also in atherothrombosis.

## 3. Inflammation and Obesity

Adipose tissue was long considered to have a single function, that of storing fat. It is now recognized as an endocrine organ that secretes various adipokines, including leptin, adiponectin, resistin and visfatin, as well as cytokines and chemokines involved in both systemic and local inflammation, such as TNF $\alpha$ , IL-6 and monocyte chemoattractant protein 1

(MCP-1) [65,66]. Macrophage infiltration, the histopathological feature of inflammation of adipose tissue, is clearly correlated with body weight and adipocyte size, and the percentage of macrophages in adipose tissue is estimated to range from <10% normal weight to almost 40% in obese patients [67,68]. Hypertrophy of adipocyte cells induces necrosis leading to macrophage infiltration. A share of 90% of macrophages surround dead cells, in the shape of a crown. They phagocytose detritus and lipid droplets resulted from adipocytes' death, forming giant cells with multiple nuclei, a symbol of chronic inflammation [69,70]. Local and systemic inflammation is promoted by macrophages' secretion of chemokines and cytokines as MCP-1 mRNA, an important factor in vascular endothelial dysfunction and atherogenesis [71,72].

Obesity induces changes in methylation of leukocytes' DNA, causing immune disturbances. Excessive fat tissue is also associated with mitochondrial dysfunction, increased apoptosis in adipocytes, reduced oxidation of fatty acids and metabolic low-grade inflammation [73,74].

Dietary saturated fatty acids (SFAs), for example palmitic acid (PA), increased in obese patients' diet, are potent factors that may act as DAMPs. PA affects AMP-activated protein kinase (AMPK)–autophagy–ROS signaling axis, causing disintegration of the mitochondrial membrane and inducing ROS accumulation and NLRP3 inflammasome activation [75]. Loss of mitochondrial integrity following mitochondrial permeation transition pore (mPTP) opening is also superimposed with one of the theories of aging [76]. That leads to the deduction that NLRP3 activity is implicated in aging process.

Adiponectin, the most studied of adipokines, is a polypeptide hormone, historically known as a protective factor in diabetes and CVD. However, there are also controversies about adiponectin. Its physiological effect on inflammation and immunity is not clear enough, given that it has been shown to also have pro-inflammatory effects, stimulating the secretion of chemotactic factor and IL 6 in the fat cell [77]. It appears that different conformations of adiponectin may have different effects: those with high molecular weight (HMW) have pro-inflammatory effects, and those with low molecular weight (LMW) produce anti-inflammatory effects [78]. More recent studies show that adiponectin may have a pro-inflammatory effect in patients with auto-immune diseases. Elevated adiponectin levels have been associated with the progression of intestinal inflammatory disease and rheumatoid arthritis. In chronic inflammatory diseases with low inflammation, such as diabetes, adiponectin has low values, while in auto-immune diseases with significant inflammation, adiponectin has high values. This may indicate that adiponectin may have different effects depending on the isoform and the tissue on which it exercises its effect. The answer could come from different measurement techniques and distinction of adiponectin isoforms (LMW trimer, MMW hexamer and HMW multimer) [79].

Apart from adiponectin, another adipokine involved in modulating obesity-related inflammation is visfatin, which was found in high concentrations at the site of carotid plaques and is associated with lesion instability of coronary atherosclerotic disease [80–82]. Activation of the NLRP3 inflammasome has been shown to be the root cause of visfatin-induced endothelial inflammation [83].

High plasma levels of leptin determine endothelial oxidative stress and activation of the renin–angiotensin–aldosterone system “RAAS” [84,85]. Adiponectin and leptin appear to play important roles in vascular homeostasis and consequently in arteriosclerosis and hypertension [86].

There is a two-way link between NLRP3 inflammation and obesity: the metabolic imbalances related to obesity activate inflammation and, once activated, inflammation influences the prognosis. Increased expression of NLRP3, caspase-1 activity and IL-1 $\beta$  concentration in adipocytes and adipocyte macrophages has been demonstrated in obese patients. These findings are associated with the severity of diabetes and with every one of the abnormalities of metabolic syndrome [87]. Furthermore, elimination of NLRP3 inflammasomes in obese mice reduces IL-18 and interferon- $\gamma$  (IFN- $\gamma$ ). IFN- $\gamma$  expression in fatty tissues, increases naive lymph cell count and reduces effector T lymphocyte count [88].

Activation of these inflammasomes appears to be the explanation for chronic inflammation that characterizes insulin resistance and obesity [89]. NLRP3 inflammasome components and activation products are highly expressed in fat tissue of obese individuals, and their presence is directly correlated with the severity of the disease [90]. In the current context of SARS-COV2 infections, the connection between obesity and NLRP3 activation seems to play an important role in the outcome of COVID-19 in these patients [91]. Previous priming of the inflammasome will make these patients more vulnerable, with quicker inflammasome assembly and cleavage of Gasdermin D by caspase-1 and Gasdermin pore formation, leading to pyroptosis [91].

There is an older-age-dependent redistribution of adiposity toward the abdominal viscera that occurs unrelated to the total fat tissue mass and creates immune-metabolic disturbances, leading to the hypothesis that abdominal fat is associated with early aging features [12]. Furthermore, both IL-1 and IL-18 mediate obesity and also age-induced metabolic disturbances [92].

Obesity may cause an increase in the rate of telomere shortening, mainly due to oxidative stress and low-grade chronic inflammation, a process associated with premature aging, as it has been demonstrated that the shortening of telomere is negatively correlated with lifespan [74,93,94].

In experimental studies, diet-induced obesity was associated with premature vascular senescence [95]. This is a consequence of cellular senescence of vessel that predisposes to age-related artery diseases, such as peripheral ischemia, myocardial infarction and stroke. Furthermore, the pro-inflammatory secretory phenotype, a feature of senescence, may play a role in obesity complications, such as insulin resistance, diabetes and cardiovascular increased mortality.

#### **4. Inflammation in Diabetes—What Are We Dealing With?**

Researchers have identified higher levels of inflammatory markers in diabetic patients decades ago, later showing that obesity, especially visceral obesity, causes chronically elevated levels of cytokines that alter the action of insulin and contribute to the disease. Insulin resistance also results in inflammation, creating a vicious circle that facilitates disease progression and complications. The clear causal relationship between diabetes and inflammation is difficult to define, but at present, we have evidence of inflammatory cytokine involvement on several levels in the pathogenesis of diabetes. Metabolic syndrome and T2DM share several metabolic imbalances in lipid profiles and acute phase reactants, such as creative protein (CRP), SAA, TNF alpha and IL6. Fibrinogen, tissue factor, complement component, PAI1 and tissue plasminogen activator (tPA) are also increased, but with smaller variations [96–98]. Obesity and T2DM are pathologies with low levels of chronic inflammation in response to the activation of innate immunity secondary to environmental, metabolic and genetic factors [65].

Accumulation of advanced glycation end products (AGEs) in tissues is a feature of aging, and their expression is increased in diabetes and renal disorders [99]. It has already been shown that endogenous AGEs, highly expressed in a diabetic environment, interfere by multiple mechanisms in vessel wall homeostasis, and their concentration is positively correlated with the extension and severity of atherosclerosis [100,101]. Their action is manifested mainly through two mechanisms: a direct one and one that is receptor dependent. The direct way is by altering the structure and function of proteins in the glycation process. AGE interaction with endothelial surface receptor for AGEs (RAGE) is a receptor-dependent mechanism. Irrespective of the action pathway, these molecules activate different cells causing excessive production of ROS and release of pro-inflammatory cytokines. Dietary AGEs exposure also triggers a strong response from the immune innate system, irrespective of the presence of diabetes or obesity. AGE exposure releases TNF- $\alpha$  from human macrophage-like cells in a concentration-dependent manner, induces cellular stress and promotes activation of inflammatory pathways [102,103]. Food AGEs that are



not absorbed and are released in the colon interfere with local microbiota metabolism and intestinal integrity and permeability, resulting in chronic low-grade inflammation [99,104].

Hyperglycemia, high ROS concentration and the interaction of AGEs and their receptors (RAGE) within the endothelium are associated with the secretion of oxidative-mediated cytokines secretion. This consequently induces the expression of cell adhesion molecules vascular cell adhesion molecule-1 (VCAM-1), intercellular adhesion molecules (ICAM1), MCP-1 and E-selectin) in endothelial and vascular smooth muscle cells, leading to endothelium-dependent vasodilation dysfunction and promoting endothelial cell apoptosis [82,105]. In addition to glucotoxicity, lipotoxicity is also related to endothelial dysfunction.

Endoplasmic reticulum (ER) stress may be one of the pathways leading to T2DM by causing both insulin resistance and cell loss. Nutrients excess, obesity and cytokine secretion are related to ER stress [106,107].

It has been postulated that the intestinal microbiome may interact with the immune system by inducing metabolic changes that underlie the molecular origin of the low-level inflammation that characterizes obesity and diabetes [108]. Alteration of the intestinal microbiome can directly affect the immune cells within the gut and through microbial products as lipopolysaccharides (LPS), metabolites and short-chain fatty acids (SCFA), together interfering with adipogenesis and/or insulin resistance [109].

Switching the macrophage phenotype from predominantly M2 type anti-inflammatory to increased proportions of M1 type pro-inflammatory macrophages plays a crucial role in initiating and amplifying inflammation in the Langerhans islets. However, evidence shows that B and T cell recruitment precedes the infiltration of adipose tissue by macrophages [110].

In diabetes, NLRP3 activation is triggered by oxidized LDLs, free fatty acids, cholesterol crystals, ceramides and uric acid, together with reactive oxygen species, elevated serum glucose levels that act as endogenous damage-associated molecular patterns. NLRP3 activation is related to macrovascular complications, especially myocardial infarction, independent of blood glucose and cholesterol levels [111]. It is worth highlighting that T2DM is, historically, the first metabolic disease associated with NLRP3 inflammasomes [112,113].

IL1 beta production, consequent to NLRP3 activation, leads to pancreatic beta cell dysfunction and destruction [114]. In addition, IL 1 beta promotes oxidative stress in the endoplasmic reticulum and cell death, processes involved in the pathogenesis of T2DM [115]. In addition, it promotes overexpression of other inflammatory mediators, such as IL18 and IL33 signaling and enhances the inflammatory response [116].

IL 18 is activated roughly through mechanisms required for IL1 beta activation. It induces the secretion of  $\text{TNF}\alpha$ , which is responsible for promoting IL-6 and CRP synthesis. All mentioned cytokines are associated with insulin resistance and progression of T2DM.

NLRP3 inflammasome activity is divided into two subcategories in diabetic patients. The first subcategory includes direct recognition of diabetes-related DAMPS and activation, while the second subcategory is related to gut microbial changes and associated inflammation [113].

Regardless of the etiopathogenetic mechanisms that underlie various types of diabetes, the common pathway appears to be inflammation of Langerhans beta cells in the pancreatic islets. The concept is of an auto-inflammatory process, which results in reduction of the number of beta cells and a functional alteration [117]. The inflammasome/IL-1beta pathway, activated in the pancreatic islets, is the most common, best-studied and with the highest impact on beta cell dysfunction [118].

Experimental studies have confirmed that IL-6, along with other inflammatory cytokines, induces apoptosis in the pancreatic islets and acts as a predictor and pathogen marker for T2DM progression [119]. Immune system activation is closely linked to the incidence and progression of T2DM, and adaptive and innate immunity is involved in inflammation of adipose tissue.

There is a well-studied relationship between glucose metabolism abnormalities, diabetes and IL-1 $\beta$ -mediated NLRP3 activation. Further studies need to deepen the research on the effect of NLRP3 inhibition in diabetes. It is necessary to identify the cross-link and

balance between beneficial and detrimental inflammasome activations for new therapeutic approaches that suppress NLRP3.

The presence of obesity and diabetes is associated with early vascular aging, even among adolescents [120]. Inflammation-derived deleterious mechanism seems to be responsible for all the features of vascular early decline (see Table 2).

**Table 2.** Mechanistic links between diabetes and vascular aging.

Diabetes Features Involved in Vascular Aging	Inflammation-Associated Pathways
Arterial stiffness	Chronic low-grade inflammation [121,122]; medial calcification, secondary hyperparathyroidism [123], FGF23-Klotho axis [124–126]; dysfunction of endothelial NO synthase (eNOS) [127]
Hemodynamic ageing, hypertension	Endothelium-dependent vasodilation dysfunction [122,127]; NLRP3-induced pyroptosis [128]; mechanical wall stress
Microvascular and endothelial dysfunction	Cytokine-induced endothelial cell apoptosis; endothelium-dependent vasodilation dysfunction [127]; accelerated atherosclerosis; local tissue renin–angiotensin–aldosterone system (RAAS) in the vascular tissue [12]; free-radical-caused abnormalities in prostacyclin (prostaglandin I <sub>2</sub> ) secretion [129]
Chronic inflammation (general and perivascular)	NLRP3 activation, Il 1 beta, Il 18, Il 6 production; production of acute-phase proteins in the hepatocyte (fibrinogen, PAI-1, SAA, CRP); increased fibrinogen, TNF $\alpha$ , increased oxidative stress and adhesion molecules (ICAM1, VCAM1) [31,38,112,114,130]
Insulin resistance	Excessive production of reactive oxygen species (ROS) [10,19,90,113,131]; saturated fatty acids; alteration of the intestinal microbiome [132]; endoplasmic reticulum (ER) stress [16,112]
Defects in incretin function	Decreased NO production [133–135]
Hyperglycemia, AGE	Products of reaction of proteins with reactive oxygen species—advanced glycation end products (AGE). Exposure to AGE—modified protein-induced inflammatory cytokines and endothelial dysfunction oxidative-mediated cytokine secretion [82,105]
Dyslipidemia	Low-density oxidized lipoprotein (LDL)
Early-life influences	Birthweight, genetics, fetal programming [136]
Telomere length	Telomere shortening/attrition [94]
Dysbiosis of the gut microbiota	Promotion of oxidative stress-mediated arterial dysfunction [137,138]
Arterial media calcification in nephropathy	Secondary hyperparathyroidism [123], FGF23-Klotho axis [124–126]; hyperphosphatemia-induced endothelial cell dysfunction and apoptosis
Neuropathy and autonomous nerve dysfunction	Increased sympathetic activity; glycosylation end products; impaired circulation (enhanced vasoconstriction) [139]
High levels of uric acid	Increased vasoconstriction-cell anoxia; stimulation of renin–angiotensin–aldosterone system; perturbed dilation of the vessels due to inhibition of nitric oxide [140,141]
Oxidative stress	Increased expression of angiotensin II type-1 (AT1) receptor [12]

AGE—advanced glycation end products; AT1—angiotensin II type-1; CRP—C-reactive protein; eNOS—endothelial nitric oxide synthase; ER—endoplasmic reticulum; FGF23—fibroblast growth factor 23; ICAM1—intercellular adhesion molecule 1; Il 1 beta—interleukin 1 beta; Il 18—interleukin 18; Il 6—interleukin 6; LDL—low-density lipoprotein; NLRP3(Nucleotide-binding oligomerization domain, Leucine rich Repeat and Pyrin domain containing 3; NO—nitric oxide; PAI-1—plasminogen activator inhibitor 1; RAAS—renin–angiotensin–aldosterone system; ROS—reactive oxygen species; SAA—serum amyloid A; TNF  $\alpha$ —tumor necrosis factor; VCAM1—vascular cell adhesion molecule 1.

## 5. Protective Factors in Diabetes and Cardiovascular Disease

### 5.1. *Klotho* Proteins

*Klotho* is a membrane-soluble protein implicated in the proper functionality of many organs. It has an anti-aging and cardioprotective role. There is important evidence that *Klotho* deficiency correlates with the onset and development of coronary disease atherosclerosis, myocardial infarction and left ventricular hypertrophy [142]. Therefore, the involvement of *Klotho* in signaling and regulation of adequate cellular metabolism may have an important role in cardiac and vascular protection. There are three subfamilies of the *Klotho* protein group, namely  $\alpha$ -*klotho*,  $\beta$ -*klotho* and  $\gamma$ -*klotho*.  $\alpha$ -*klotho* activates fibroblast growth factor (FGF) 23, while  $\beta$ -*klotho* activates FGF19 and FGF21. The *Klotho* protein group with its receptors is found on the surface of tissue cells. Their action is closely associated with that of a group of hormones—FGFs. When the subfamily is not specified, it generally refers to  $\alpha$ -*klotho*.  $\alpha$ -*klotho* comes in two forms: a transmembrane protein and a soluble endocrine factor detectable in blood, urine and cerebrospinal fluid. The soluble form is predominant. The transmembrane protein acts as a coreceptor for FGF 23 [143]. Its principal role is in the homeostasis of mineral metabolism. The main source is the kidney. It is also present in other organs and vessels where it exerts mechanisms of action independent of phospho-calcium metabolism and independent of renal impairment. Low levels of *Klotho* are related to increased mortality and morbidity associated with CVD [144,145]. Animal studies have shown that mice with low levels of s-*Klotho* had endothelial dysfunction, atherosclerosis, accelerated arteriosclerosis and defects of angiogenesis [142,146,147]. *Klotho*'s absence led to premature aging syndrome, the “*Klotho*-deficient mice aging model”, while in an animal model with *Klotho* overexpression, life expectancy increased. *Klotho* suppressed the expression of adhesion molecules within the rat aorta and reversed the inhibition of eNOS (endothelial nitric oxide synthase phosphorylation). Low levels of *Klotho* are related to vascular and valvular calcifications in rats. It stimulates the production of NO (nitric oxide) with vasodilatory effects [148]. In vivo expression of the murine “*Klotho* gene” (mKL) in pancreatic cells attenuated  $\beta$ -cell apoptosis and prevented STZ (streptozotocin)-induced diabetes [149].

In humans, plasma  $\alpha$ -*klotho* is elevated and insulin growth factor 1 (IGF-I) is decreased during cardiopulmonary exercise. These findings are related to reduced endothelial dysfunction [150]. Early predictors of atherosclerosis, such as intima-media thickness (IMT) in the carotid arteries, flow-mediated dilation of the brachial artery and epicardial fat thickness, were evaluated. The results showed that low serum *Klotho* levels were related to increased epicardial fat and IMT and lower flow-mediated arterial dilation. Thus, lower serum levels of *Klotho* should be considered as an early predictor of atherosclerosis [151]. Umbilical vein endothelial cells (HUVEC) were preincubated with *Klotho* protein and exposed to TNF  $\alpha$ . *Klotho* suppressed the expression of TNF  $\alpha$ -induced ICAM1 and VCAM1 adhesion molecules and also inhibited TNF-  $\alpha$  induced NF- $\kappa$ B activation and I $\kappa$ B phosphorylation—mechanisms involved in inflammation and atherosclerosis, suggesting that *Klotho* may play a role in mediating endothelial inflammation [152]. S-*klotho* is involved in the regulation of oxidative stress, inflammation and fibrosis by inhibiting insulin/IGF-1 and by its action on factor- $\beta$ 1 metabolism transforming growth factor beta 1 (TGF- $\beta$ 1). Inhibition of IGF-1 by *Klotho* regulates oxidative stress and reduces death. The *Klotho* gene is expressed in pancreatic  $\beta$  cells. Haplodeficiency *Klotho* has been related to hyperglycemia, glucose intolerance, reduced insulin deposits and  $\beta$  -pancreatic apoptosis [149]. Endotoxemia caused depletion of cardiac *Klotho* and HSP70, an anti-inflammatory molecule that prevents stress-induced cellular apoptosis. Recombinant *Klotho* administration preserved the myocardial expression of HSP70 and improved cardiac function within the elderly. *Klotho* may act as a therapeutic agent in age-related CVD [153].

$\beta$ -*klotho* is the primary receptor related to the hormone FGF21, released within the body in association with the sensation of hunger. When FGF21 binds to  $\beta$ -*klotho* protein, the hormone stimulates glucose metabolism within the body and increases insulin sensi-

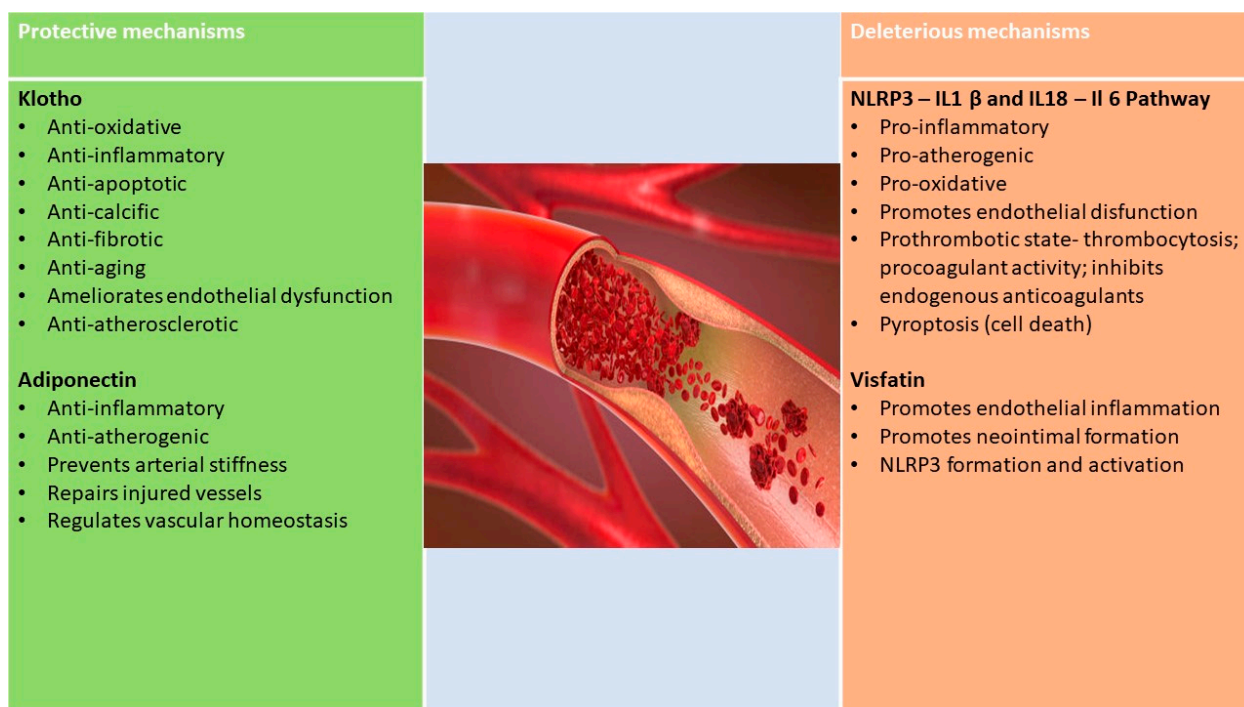
tivity.  $\beta$ -klotho protein encompasses a protective role in lipotoxicity and inflammation of hepatocytes, resulting in non-alcoholic liver disease in T2DM [154].

### 5.2. Adiponectin

Unlike other adipokines, adiponectin levels are low in obese patients. It has an anti-atherogenic, anti-inflammatory, cardioprotective effect and has a role in regulating insulin sensitivity. It also inhibits gluconeogenesis and accelerates glucose uptake [76]. It has been postulated that adiponectin levels are inversely correlated with IL-18 and that it inhibits IL-1 $\beta$  and IL-18 secretion by suppressing LPS and PA-induced NLRP3 inflammasome activation in TH-1 cells and hepatocytes [77,78].

Low baseline adiponectin levels predict arterial stiffness (AS) in hypertensive individuals [155]. Adiponectin was identified at the site of subendothelial injuries provoked by catheters, and it is believed to have a role in the repair of damaged vessels. It is also found in other conditions with disruption of the endothelial barrier, such as the atherosclerotic lesions where it may play the same reparatory role [156]. At the level of the endothelium, adiponectin also has a role in vascular homeostasis. It activates both AMPK (endothelial nitric oxide synthase) and COX-2 (Cyclooxygenase-2) pathway, followed by NO production and anti-inflammatory effect and improvement in endothelial cell function [157].

Thus, the long-term vascular health depends on a delicate balance between protective and damaging factors (Figure 4).



**Figure 4.** Protective vascular effects of Klotho proteins and adiponectin vs deleterious effects of NLRP and visfatin.

## 6. All about EVA (Early Vascular Aging)

Vascular aging is a natural process that occurs concomitantly with increasing age, through loss of elastin, increased collagen content and calcium deposition in the walls of large arteries. Early vascular aging (EVA) is, by definition, a disjunction between chronological and biological vascular age. Whether it is referred to as early vascular senescence or premature vascular aging, EVA is a distinct phenomenon associated with factors such as chronic inflammation, diabetes, hypertension or chronic kidney disease. EVA reflects an inability of the arterial wall to repair the damage produced through various mechanisms. These mechanisms induce stress on the vascular wall, either mechanical, such



as hypertension, or chemical, such as acidosis in kidney disease [158] or inflammation in inflammatory bowel disease [159] and rheumatoid arthritis (RA) [160].

Early “inflammaging” causes premature medial vascular calcification leading to AS that is intimately linked to arteriosclerosis and EVA. AS has already coined the role of intermediate cardiovascular endpoint and can be used as a predictor of CVD and mortality. AS, used as a measure of EVA, is commonly evaluated through pulse wave velocities (pWV). Carotid intima-media thickness (cIMT) is also considered to be a valuable evaluation for EVA [158].

EVA is a concept usually reserved for premature aging of the large arteries, but small arteries are also affected, showing rarefaction, increased wall thickness, bigger lumen diameter and higher wall cross-sectional area [161,162]. There is also cross-talk between the small and big arteries that creates a vicious circle of increased AS, high central blood pressure, high peripheral artery resistance and target organ damage.

AS is hypertension independent in patients with chronic kidney disease or inflammatory disease, as shown by AS reduction with anti-TNF- $\alpha$  therapy, without changes in blood pressure levels [163]. AS also appears from a very young age in patients with inflammatory diseases [164]. Vulnerable individuals are at risk of early development of complications usually expected later in life. Patients suffering from RA have an increased risk of myocardial infarction, equivalent to the risk of a 10-year-old individual [158]. Identification of the types of vascular insults that the arterial wall is subjected to can lead to better prevention strategies. In this sense, screening for EVA not only in hypertensive individuals, but also in patients with inflammatory diseases, diabetes, etc., might prove beneficial.

Arterial inflammation is linked to antigens (modified lipids) that activate the immune response. T cells enter the perivascular fat and cause a pro-inflammatory environment, a process that is also amplified by chronic low-grade inflammation [165]. As NO exhibits strong anti-inflammatory effects, all conditions linked to reduced NO bioavailability through NO inactivation, dysfunction of eNOS or increased endothelin-1 are associated with AS [166].

Chronic low-grade inflammation due to chronic infections, sedentary lifestyle, physical inactivity, obesity, gut microbiota dysfunction, poor diet, socio-psychological stress, pollution or smoking is another factor that promotes long-term vascular degeneration and stiffening. Adding to chronic low-degree inflammation, high glucose levels and vessel wall protein glycation also enhance AS (as discussed above).

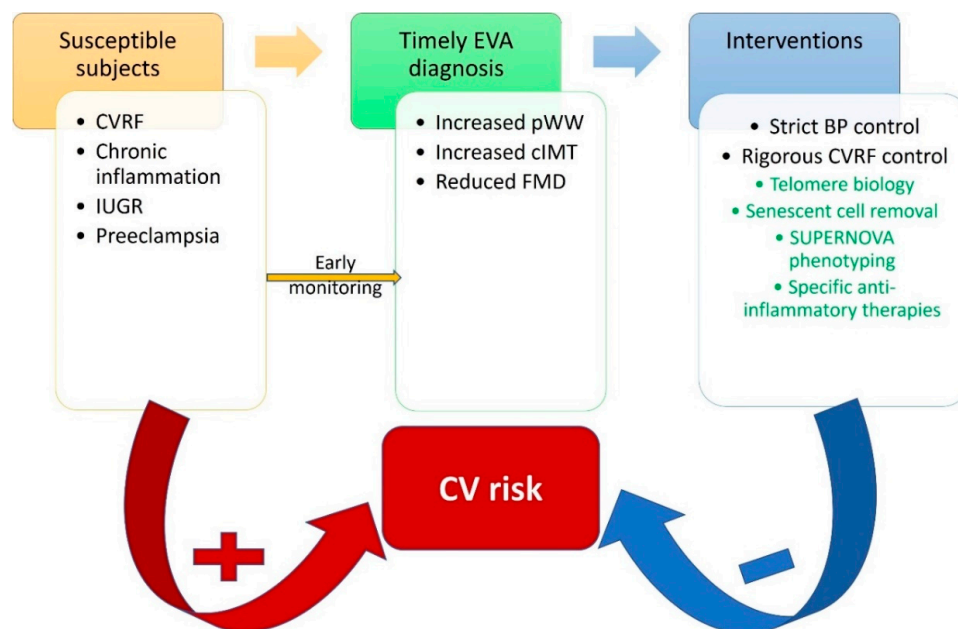
A recent and very elegant study demonstrates, through positron emission tomography, a significant  $^{18}\text{F}$ -fluorodeoxyglucose ( $^{18}\text{F}$ -FDG) uptake in atherosclerotic plaque-free areas, suggesting that inflammation precedes plaque formation [167]. Moreover, a similar method of imaging perivascular fat inflammation was used for the coronary arteries to identify early subclinical coronary artery disease [168]. This finding confirms the relation between dysfunctional perivascular adipose tissue, inflammation and vascular disease. In physiological conditions, perivascular fat has an anti-inflammatory role, whereas age can modify its function to pro-inflammatory (e.g., endothelin-1, inducible NOS and cyclooxygenase 2) [169]. The pro-inflammatory vascular environment is associated with low-grade perivascular inflammation, creating a vicious cycle with development of AS. Another process involved in the development of AS is perivascular fibrosis. Inflammation and immune cell infiltration play a key role, mainly through Th17. Profibrotic cytokines, such as IL17, promote collagen deposition and AS [170]. It was recently shown that miR-214 regulates T cells and modulates vascular stiffening and fibrosis [170]. Recently, a metabolomic signature of EVA was described involving lysophosphatidylcholines (LPCs), compounds associated with inflammation and atherosclerosis [171]. Downregulation of four LPCs was associated with a four times higher risk of EVA [171].

Another age-related biological process of interest in this context is vascular senescence. Vascular senescence is a state of proliferative arrest associated with secretion of inflammatory chemokines, cytokines and growth factors that can affect vascular health. This phenotype, defined as the senescence-associated secretory phenotype (SASP), constitutes



a link between aging, inflammation and vascular disease [131,172]. Among the secreted proteins, IL-6, IL1- $\alpha$  and  $\beta$ , IL8, IFN $\gamma$ , Vascular endothelial growth factor (VEGF), ROS and TNF $\alpha$  are involved in endothelial dysfunction or atherosclerosis [131,173]. Vascular senescence is also produced by certain chemotherapies [174]. Vascular senescence and chemotherapy are linked through low levels of sirtuins (mainly SIRT1, but also SIRT6), proteins known to be protective molecules against inflammation and aging [175]. Moreover, chemotherapy (anthracyclines) can promote AS through vascular inflammation, inducing cytokine production (NF $\kappa$ B, TGF- $\beta$ , matrix metalloproteinases (MMPs), ROS, peroxy nitrite and nicotinamide adenine dinucleotide phosphate oxidase (NADPH oxidase) [174].

If exposure to cardiovascular risk factors happens at a young age, vascular aging accelerates in early life [176]. For example, individuals that had intrauterine growth restriction and rapid growth after birth are a vulnerable group [136]. Thus, it is essential, given the fact that there are still many unknown or uncontrollable issues that influence the early aging process, to control exposure to factors that produce inflammation and early screening of susceptible subjects (Figure 5).



**Figure 5.** Proposed cardiovascular risk reduction strategy through identification of susceptible individuals, early diagnostic protocols and timely interventions. BP—blood pressure; cIMT—carotid intima-media thickness; CVRF—cardiovascular risk factors; FMD—flow-mediated dilation; IUGR—intrauterine growth restriction; pWW—pulse wave velocity. In green, promising future interventions.

In contrast to the EVA individuals, there is a recently described population with slow vascular aging, the supernormal vascular aging group (SUPERNOVA) [177]. The SUPERNOVA phenotype has a 40% lower (6 years) vascular age and risk of cardiovascular events than individuals with the same chronological age but normal vascular aging [178,179]. This population, resilient to the normal aging process, could be a starting point in identifying factors that are key to effective arterial aging.

## 7. Man Is as Old as His Arteries—Interventions and Future Perspectives

The inevitable lifelong cumulation of factors leading to vascular dysfunction leads to exponential disease. Thus, the therapies we employ must be multifaceted as to address all of these factors. The use of risk scores, such as the Early Vascular Aging Ambulatory Score, might also help identify a vulnerable population with subclinical atherosclerosis [180].

In addition to the main mechanism of action, modern therapeutic approaches to the treatment of diabetes and atherosclerosis are also based on anti-inflammatory prop-

erties. Non-pharmacological treatments, such as lifestyle changes and pharmacological and bariatric surgical approaches to weight loss, appear to reduce systemic inflammation evaluated with CRP and IL6. Weight loss also reduces cardiovascular and all-cause mortality [181].

### 7.1. Lifestyle Modifications and Dietary Options

Choosing a proven cardioprotective diet can be useful in slowing the progression of arterial disease. The ketogenic diet has been linked to microRNA expression that modulates the antioxidant and inflammatory states in obese patients [182]. Moreover, the ketogenic diet improves the inflammatory status through weight loss, influence on the gut microbiota, insulin resistance reduction, improvement of the lipid profile [183], etc.

The inflammatory potential of 45 micro- and macro-nutrients is included in the dietary inflammatory index (DII) [184]. A pro-inflammatory score was associated with increased risk of CVD and CVD mortality [184].

Low-AGEs diet may be an effective measure for prevention and improvement of metabolic inflammation. Compared with high-AGE diet, low-AGE diet reduced TNF $\alpha$ , VCAM1, leptin and RAGE and increased adiponectin and sirtuin-1 levels [99,185].

The Mediterranean diet (MedDiet) has health benefits based on its anti-inflammatory, antioxidant and anti-atherosclerotic effects. Lower levels of inflammation biomarkers and reduction of cardiovascular risk factors were reported in individuals undergoing this type of nutrition [186]. MedDiet is positively correlated with telomere length and could therefore have an important role as an anti-aging lifestyle measure [187,188].

Polyphenols play a beneficial role in the prevention and development of chronic inflammation-related diseases, such as diabetes, obesity and CVD. They modulate the immune system by lowering pro-inflammatory cytokines' synthesis and decreasing oxidative stress and inflammatory gene expression. NLRP3 inflammasome has recently been proven to be modulated by polyphenol. Rutin, quercetin, catechin, resveratrol lychee seed polyphenol and epigallocatechin-3-gallate (EGCG) are just some of these plant-derived natural compounds that downregulate NLRP3 inflammasome activation [189–194].

The impact of physical exercise over inflammation depends on the level and type of training, and its influences are manifested through at least two mechanisms: myokines secretion and activation of laminar shear stress. It seems that the levels of anti-inflammatory cytokines are increased with regular physical activity, while in exhaustive or acute exercise, pro-inflammatory cytokines are elevated [195–197]. Moderate chronic physical activity is inversely correlated with decreases in expressions of TNF- $\alpha$ , MCP-1 and PAI-1 in adipose tissue and with 6–35% lower CRP levels [196,198]. A recently studied, Meteorin-like (METRNL) myokine enhanced during exercise seems to modulate the effect of exercise on metabolism by inhibiting IL-1 $\beta$ . Additionally, exercise lowers gene and protein levels of inflammasomes in fat tissue, including NLRP3 complex and its upstream inducers [199]. Physical exercise also has a beneficial cardiovascular effect through modulating the balance between protective and deleterious factors, e.g., Klotho vs IGF-1 [150]. Exercise determines laminar shear stress and downregulates the expression of endothelial angiotensin II type 1 receptor (AT1R). This reduces the formation ROS and maintains NO homeostasis. As a result, it has an anti-inflammatory and anti-atherosclerotic effect [200].

### 7.2. Statins

Justification for the use of statins in primary prevention (JUPITER) showed that rosuvastatin lowered CRP levels along with lowering LDL cholesterol, but the results for glycemic control are inconsistent. This may mean that statin use does not provide the same effect on diabetes and CVD inflammatory features [201,202]. Statins might have direct and indirect effects on adipose tissue and its secretory function, but their effects vary. For example, hydrophilic statins, such as rosuvastatin and pravastatin, have greater beneficial effects on adipokines secretion than lipophilic statins, such as atorvastatin and simvastatin [181]. The main effect is achieved by influencing the secretion of adiponectin,

leptin and visfatin [203,204] and, consequently, inflammation, objectified by reduction of CRP levels [201]. Atorvastatin reduces NLRP3 activation and decreases IL1 and IL-18 levels in patients with atherosclerosis [130]. Interestingly, statins might activate NLRP3 and IFN I through decreasing intracellular cholesterol flux. Therefore, inhibition of these proatherogenic pathways (NLRP3 or IFN I) may be of assistance in patients with CVD treated with statins [205].

### 7.3. Antidiabetic Drugs

Insulin and other antidiabetic agents also have anti-inflammatory properties, evidenced by decreased levels of inflammatory markers, in addition to glycemia reduction. Lowering blood sugar alone positively influences inflammation, but intrinsic effects of currently used antidiabetic drugs have been demonstrated [10]. For example, metformin's anti-inflammatory actions seem to be independent of blood sugar levels and more expressed on the vessels [10,206,207]. The anti-inflammatory actions of thiazolidinediones through binding and activation of PPAR gamma appear to be associated with NF-kappa-B suppression and reduced NF-kappa-B target expression [208–210]. A new class of antidiabetic drugs, sodium-glucose cotransporter 2 inhibitors (SGLT2 inhibitors), work by increasing renal excretion of glucose. Additional beneficial mechanisms include: decrease in production of pro-inflammatory cytokines, reduced adipose tissue-mediated inflammation, reduced oxidative stress, reduced serum uric acid, reduced glomerular hyperfiltration and albuminuria and suppression of AGE [211]. The SGLT2 inhibitor, empagliflozin, inhibits the secretion of NLRP3 and IL-1 $\beta$  by increasing plasma  $\beta$ -hydroxybutyrate and decreasing serum insulin [212,213]. Dipeptidyl peptidase-4 (DPP-4) inhibitors and Glucagon-like peptide-1 (GLP-1) receptor agonists even have intrinsic anti-inflammatory properties [135]. GLP1 agonists may intervene in inflammation mechanisms via the protein kinase A pathway in 3T3-L1 adipocytes increases adiponectin levels and decreases inflammation markers, such as IL6 [214].

### 7.4. Anti-Inflammatory Drugs

Canakinumab, an interleukin-1 $\beta$  inhibitor, reduced the risk of major cardiovascular events by 15% in patients with a history of myocardial infarction, randomized to 150 mg of canakinumab over standard therapy; the risk of recurrent myocardial infarction by 24%; and the risk of cardiovascular mortality by 10% [215]. For the first time, the study demonstrated that reducing inflammation decreased cardiovascular risk, regardless of LDL cholesterol levels. Although it had the same cardiovascular effects on a subset of diabetic patients, canakinumab did not reduce the incidence of diabetes.

Anakinra, an antagonist of both alpha and beta IL 1, lowers blood sugar levels, improves pancreatic beta function and reduces systemic inflammation [216]. It reduces CRP values in acute heart failure and increases exercise tolerance in heart failure with preserved LVEF [217].

Colchicine has a role in inhibiting NLRP3 inflammation and, consequently, the production of IL1 and CRP. Administration of 0.5 mg/day colchicine after myocardial infarction leads to significant decrease in cardiovascular death, myocardial infarction, stroke and emergency revascularization—compared to placebo [218,219]. Administration of 0.5 mg/day in chronic atherosclerotic coronary heart disease demonstrates a significant decrease in ischemic events [219,220].

Nebivolol improves myocardial function and lipid metabolism and decreases inflammation, possibly by inhibition of NLRP3 and improvement of mitochondrial function [221].

MCC950 is an orally administered compound that selectively inhibits NLRP3 without any effect on other inflammasomes. It is a sulfonyleurea-type compound that has been shown to improve cardiovascular outcome in diabetic patients [222,223]. It has a demonstrable effect on atherosclerotic plaque reduction and improvement of vascular function by systemically reducing inflammation and oxidative stress. In diabetic patients, it reduced the activity NLRP3 and IL-1b and secondary diminished pro-inflammatory molecules

derived from IL1 beta and Il 18 activation. MCC950 antiatherosclerosis effect was independent of lipidemia status [64,224]. Regarding diabetes, the administration of MCC950 improved glycemic control in allogeneic mice undergoing islet transplantation by inhibiting inflammation-responsible islet death [225].

### 7.5. Klotho Proteins

Klotho has been extensively studied in experimental models and in patients with chronic renal conditions. Klotho's myocardial protection is determined through multiple isoform-dependent but insufficiently defined mechanisms in cardiac pathology and diabetes. Preventing the decline of Klotho, reactivating its endogenous form or administration of exogenous Klotho may serve as prevention and treatment strategies, mainly in chronic renal disease but also in diabetic patients with cardiovascular complications. Recombinant  $\alpha$ -klotho treatment improved renal function and cardiac remodeling in chronic kidney disease. The administration alleviated renal and cardiac dysfunction induced by a phosphate-rich diet even in the absence of pre-existing chronic nephropathy [226]. Soluble Klotho may inhibit hepatic lipid accumulation in T2DM and improve insulin sensitivity [154]. Klotho treatment also reduced the expression of lectin-like oxidized LDL receptor-1 (LOX-1). LOX-1 is a major receptor for oxidized LDL in endothelial cells, a crucial step in the pathogenesis of atherosclerosis. Thus, the inhibition of the LOX-1 pathway by Klotho restricts the inflammatory response and atherogenesis [227]. Therefore, Klotho administration in the event of a cardiovascular event to limit the injury seems like a promising field for future clinical research.

## 8. Conclusions

Inflammation is intimately linked to the initiation and progression of vascular disease. Based on this certitude, phenotyping individuals at risk of developing early vascular aging might prove beneficial. Detecting molecular features of successful vascular aging can also help advance our therapeutic perspectives. Looking for therapeutic strategies to stop or slow the progression to manifest disease is the key in controlling the epidemic of cardiovascular disease. For now, joining lifestyle modifications, dietary changes and anti-inflammatory drugs with conventional therapies begins to look like a winning combination.

**Funding:** This research received no external funding.

**Informed Consent Statement:** Not applicable.

**Conflicts of Interest:** The authors declare no conflict of interest.

## References

1. Damaskos, C.; Garmpis, N.; Kollia, P.; Mitsiopoulos, G.; Barlampa, D.; Drosos, A.; Patsouras, A.; Gravvanis, N.; Antoniou, V.; Litos, A.; et al. Assessing Cardiovascular Risk in Patients with Diabetes: An Update. *Curr. Cardiol. Rev.* **2019**, *16*, 266–274. [[CrossRef](#)] [[PubMed](#)]
2. Glovaci, D.; Fan, W.; Wong, N.D. Epidemiology of Diabetes Mellitus and Cardiovascular Disease. *Curr. Cardiol. Rep.* **2019**, *21*, 1–8. [[CrossRef](#)] [[PubMed](#)]
3. Henning, R.J. Type-2 diabetes mellitus and cardiovascular disease. *Future Cardiol.* **2018**, *14*, 491–509. [[CrossRef](#)]
4. Shovman, O.; Levy, Y.; Gilburd, B.; Shoenfeld, Y. Antiinflammatory and immunomodulatory properties of statins. *Immunol. Res.* **2002**, *25*, 271–285. [[CrossRef](#)]
5. Cortese, F.; Gesualdo, M.; Cortese, A.; Carbonara, S.; Devito, F.; Zito, A.; Ricci, G.; Scicchitano, P.; Ciccone, M.M. Rosuvastatin: Beyond the cholesterol-lowering effect. *Pharmacol. Res.* **2016**, *107*, 1–18. [[CrossRef](#)] [[PubMed](#)]
6. Geovanini, G.R.; Libby, P. Atherosclerosis and inflammation: Overview and updates. *Clin. Sci.* **2018**, *132*, 1243–1252. [[CrossRef](#)] [[PubMed](#)]
7. Ridker, P.M. From CANTOS to CIRT to COLCOT to Clinic: Will All Atherosclerosis Patients Soon Be Treated with Combination Lipid-Lowering and Inflammation-Inhibiting Agents? *Circulation* **2020**, *141*, 787–789. [[CrossRef](#)] [[PubMed](#)]
8. Beckman, J.A.; Paneni, F.; Cosentino, F.; Creager, M.A. Diabetes and vascular disease: Pathophysiology, clinical consequences, and medical therapy: Part II. *Eur. Heart J.* **2013**, *34*, 2444–2456. [[CrossRef](#)]
9. Booth, G.L.; Kapral, M.K.; Fung, K.; Tu, J.V. Relation between age and cardiovascular disease in men and women with diabetes compared with non-diabetic people: A population-based retrospective cohort study. *Lancet* **2006**, *368*, 29–36. [[CrossRef](#)]



10. Tsalamandris, S.; Antonopoulos, A.S.; Oikonomou, E.; Papamikroulis, G.A.; Vogiatzi, G.; Papaioannou, S.; Deftereos, S.; Tousoulis, D. The Role of Inflammation in Diabetes: Current Concepts and Future Perspectives. *Eur. Cardiol. Rev.* **2019**, *14*, 50–59. [[CrossRef](#)] [[PubMed](#)]
11. Buford, T.W. Hypertension and aging. *Ageing Res. Rev.* **2016**, *26*, 96–111. [[CrossRef](#)]
12. Penlioglou, T.; Stoian, A.P.; Papanas, N. Diabetes, Vascular Aging and Stroke: Old Dogs, New Tricks? *J. Clin. Med.* **2021**, *10*, 4620. [[CrossRef](#)]
13. Bovolini, A.; Garcia, J.; Andrade, M.A.; Duarte, J.A. Metabolic Syndrome Pathophysiology and Predisposing Factors. *Int. J. Sports Med.* **2021**, *42*, 199–214. [[CrossRef](#)] [[PubMed](#)]
14. Ginsberg, H.N.; Maccallum, P.R. The obesity, metabolic syndrome, and type 2 diabetes mellitus pandemic: Part I. Increased cardiovascular disease risk and the importance of atherogenic dyslipidemia in persons with the metabolic syndrome and type 2 diabetes mellitus. *J. Cardiometa. Syndr.* **2009**, *4*, 113–119. [[CrossRef](#)]
15. Huang, P.L. A comprehensive definition for metabolic syndrome. *Dis. Model. Mech.* **2009**, *2*, 231–237. [[CrossRef](#)]
16. Prattichizzo, F.; De Nigris, V.; La Sala, L.; Procopio, A.D.; Olivieri, F.; Ceriello, A. “Inflammaging” as a Druggable Target: A Senescence-Associated Secretory Phenotype-Centered View of Type 2 Diabetes. *Oxid. Med. Cell. Longev.* **2016**, *810327*, 1–11. [[CrossRef](#)] [[PubMed](#)]
17. Ferrucci, L.; Fabbri, E. Inflammaging: Chronic inflammation in ageing, cardiovascular disease, and frailty. *Nat. Rev. Cardiol.* **2018**, *15*, 505. [[CrossRef](#)] [[PubMed](#)]
18. Galicia-Garcia, U.; Benito-Vicente, A.; Jebari, S.; Larrea-Sebal, A.; Siddiqi, H.; Uribe, K.B.; Ostolaza, H.; Martín, C. Pathophysiology of Type 2 Diabetes Mellitus. *Int. J. Mol. Sci.* **2020**, *21*, 6275. [[CrossRef](#)] [[PubMed](#)]
19. Faselis, C.; Katsimardou, A.; Imprialos, K.; Deligkaris, P.; Kallistratos, M.; Dimitriadis, K. Microvascular Complications of Type 2 Diabetes Mellitus. *Curr. Vasc. Pharmacol.* **2019**, *18*, 117–124. [[CrossRef](#)] [[PubMed](#)]
20. Viigimaa, M.; Sachinidis, A.; Toumpourleka, M.; Koutsampasopoulos, K.; Alliksoo, S.; Titma, T. Macrovascular Complications of Type 2 Diabetes Mellitus. *Curr. Vasc. Pharmacol.* **2020**, *18*, 110–116. [[CrossRef](#)]
21. Wan, H.; Wang, Y.; Xiang, Q.; Fang, S.; Chen, Y.; Chen, C.; Zhang, W.; Zhang, H.; Xia, F.; Wang, N.; et al. Associations between abdominal obesity indices and diabetic complications: Chinese visceral adiposity index and neck circumference. *Cardiovasc. Diabetol.* **2020**, *19*, 1–12. [[CrossRef](#)]
22. Després, J.P. Abdominal Obesity and Cardiovascular Disease: Is Inflammation the Missing Link? *Can. J. Cardiol.* **2012**, *28*, 642–652. [[CrossRef](#)] [[PubMed](#)]
23. Broz, P.; von Moltke, J.; Jones, J.W.; Vance, R.E.; Monack, D.M. Differential requirement for Caspase-1 autoproteolysis in pathogen-induced cell death and cytokine processing. *Cell Host Microbe* **2010**, *8*, 471–483. [[CrossRef](#)] [[PubMed](#)]
24. Burcelin, R. Gut microbiota and immune crosstalk in metabolic disease. *Mol. Metab.* **2016**, *5*, 771–781. [[CrossRef](#)] [[PubMed](#)]
25. Jaén, R.I.; Val-Blasco, A.; Prieto, P.; Gil-Fernández, M.; Smani, T.; López-Sendón, J.L.; Delgado, C.; Boscá, L.; Fernández-Velasco, M. Innate Immune Receptors, Key Actors in Cardiovascular Diseases. *JACC Basic Transl. Sci.* **2020**, *5*, 735–749. [[CrossRef](#)] [[PubMed](#)]
26. Ratajczak, M.Z.; Bujko, K.; Ciechanowicz, A.; Sielatycka, K.; Cymer, M.; Marlicz, W.; Kucia, M. SARS-CoV-2 Entry Receptor ACE2 Is Expressed on Very Small CD45(-) Precursors of Hematopoietic and Endothelial Cells and in Response to Virus Spike Protein Activates the Nlrp3 Inflammasome. *Stem. Cell Rev. Rep.* **2021**, *17*, 266–277. [[CrossRef](#)] [[PubMed](#)]
27. Zindel, J.; Kubes, P. DAMPs, PAMPs, and LAMPs in Immunity and Sterile Inflammation. *Annu. Rev. Pathol.* **2020**, *15*, 493–518. [[CrossRef](#)]
28. Khetarpal, S.A.; Qamar, A.; Bick, A.G.; Fuster, J.J.; Kathiresan, S.; Jaiswal, S.; Natarajan, P. Clonal Hematopoiesis of Indeterminate Potential Reshapes Age-Related CVD: JACC Review Topic of the Week. *J. Am. Coll. Cardiol.* **2019**, *74*, 578–586. [[CrossRef](#)] [[PubMed](#)]
29. Döring, Y.; Libby, P.; Soehnlein, O. Neutrophil Extracellular Traps Participate in Cardiovascular Diseases: Recent Experimental and Clinical Insights. *Circ. Res.* **2020**, *126*, 1228–1241. [[CrossRef](#)]
30. Cao, X. Self-regulation and cross-regulation of pattern-recognition receptor signalling in health and disease. *Nat. Rev. Immunol.* **2016**, *16*, 35–50. [[CrossRef](#)]
31. Balanescu, S.; Barbu, E.; Georgescu, C.; Popescu, A.C. NLRP3 Inflammasome in Cardiovascular Disease: David’s Stone against Goliath? *Rom. J. Cardiol.* **2021**, *31*, 517–527. [[CrossRef](#)]
32. Kim, Y.K.; Shin, J.S.; Nahm, M.H. NOD-Like Receptors in Infection, Immunity, and Diseases. *Yonsei Med. J.* **2016**, *57*, 5–14. [[CrossRef](#)] [[PubMed](#)]
33. Elliott, E.I.; Sutterwala, F.S. Initiation and perpetuation of NLRP3 inflammasome activation and assembly. *Immunol. Rev.* **2015**, *265*, 35–52. [[CrossRef](#)] [[PubMed](#)]
34. Yang, Y.; Wang, H.; Kouadir, M.; Song, H.; Shi, F. Recent advances in the mechanisms of NLRP3 inflammasome activation and its inhibitors. *Cell Death Dis.* **2019**, *10*, 128. [[CrossRef](#)] [[PubMed](#)]
35. Xue, Y.; Tuipulotu, D.E.; Tan, W.H.; Kay, C.; Man, S.M. Emerging Activators and Regulators of Inflammasomes and Pyroptosis. *Trends Immunol.* **2019**, *40*, 1035–1052. [[CrossRef](#)]
36. Frank, D.; Vince, J.E. Pyroptosis versus necroptosis: Similarities, differences, and crosstalk. *Cell Death Differ.* **2019**, *26*, 99–114. [[CrossRef](#)] [[PubMed](#)]
37. Libby, P.; Everett, B.M. Novel Antiatherosclerotic Therapies. *Arterioscler. Thromb. Vasc. Biol.* **2019**, *39*, 538–545. [[CrossRef](#)]



38. Zhou, W.; Chen, C.; Chen, Z.; Liu, L.; Jiang, J.; Wu, Z.; Zhao, M.; Chen, Y. NLRP3: A novel mediator in cardiovascular disease. *J. Immunol. Res.* **2018**, *2018*, 5702103. [[CrossRef](#)] [[PubMed](#)]
39. Klingenberg, R.; Hansson, G.K. Treating inflammation in atherosclerotic cardiovascular disease: Emerging therapies. *Eur. Hear. J.* **2009**, *30*, 2838–2844. [[CrossRef](#)]
40. Bortolotti, P.; Faure, E.; Kipnis, E. Inflammasomes in tissue damages and immune disorders after trauma. *Front. Immunol.* **2018**, *9*, 1900. [[CrossRef](#)] [[PubMed](#)]
41. Toldo, S.; Abbate, A. The NLRP3 inflammasome in acute myocardial infarction. *Nat. Rev. Cardiol.* **2018**, *15*, 203–214. [[CrossRef](#)] [[PubMed](#)]
42. Duewell, P.; Kono, H.; Rayner, K.J.; Sirois, C.M.; Vladimer, G.; Bauernfeind, F.G.; Abela, G.S.; Franchi, L.; Nuñez, G.; Schnurr, M.; et al. NLRP3 inflammasomes are required for atherogenesis and activated by cholesterol crystals. *Nature* **2010**, *464*, 1357–1361. [[CrossRef](#)]
43. Shi, J.; Zhao, Y.; Wang, K.; Shi, X.; Wang, Y.; Huang, H.; Zhuang, Y.; Cai, T.; Wang, F.; Shao, F. Cleavage of GSDMD by inflammatory caspases determines pyroptotic cell death. *Nature* **2015**, *526*, 660–665. [[CrossRef](#)]
44. Bando, S.; Fukuda, D.; Soeki, T.; Nishimoto, S.; Uematsu, E.; Matsuura, T.; Ise, T.; Tobiume, T.; Yamaguchi, K.; Yagi, S.; et al. Expression of NLRP3 in subcutaneous adipose tissue is associated with coronary atherosclerosis. *Atherosclerosis* **2015**, *242*, 407–414. [[CrossRef](#)] [[PubMed](#)]
45. Afrasyab, A.; Qu, P.; Zhao, Y.; Peng, K.; Wang, H.; Lou, D.; Niu, N.; Yuan, D. Correlation of NLRP3 with severity and prognosis of coronary atherosclerosis in acute coronary syndrome patients. *Heart. Vessel.* **2016**, *31*, 1218–1229. [[CrossRef](#)] [[PubMed](#)]
46. Ibáñez, B.; Heusch, G.; Ovize, M.; Van de Werf, F. Evolving therapies for myocardial ischemia/reperfusion injury. *J. Am. Coll. Cardiol.* **2015**, *65*, 1454–1471. [[CrossRef](#)] [[PubMed](#)]
47. Schunk, S.J.; Kleber, M.E.; März, W.; Pang, S.; Zewinger, S.; Triem, S.; Ege, P.; Reichert, M.C.; Krawczyk, M.; Weber, S.N.; et al. Genetically determined NLRP3 inflammasome activation associates with systemic inflammation and cardiovascular mortality. *Eur. Heart J.* **2021**, *42*, 1742–1756. [[CrossRef](#)] [[PubMed](#)]
48. Karasawa, T.; Takahashi, M. Role of NLRP3 Inflammasomes in Atherosclerosis. *J. Atheroscler. Thromb.* **2017**, *24*, 443–451. [[CrossRef](#)] [[PubMed](#)]
49. Silvis, M.J.M.; Demkes, E.J.; Fiolet, A.T.L.; Dekker, M.; Bosch, L.; van Hout, G.P.J.; Timmers, L.; de Kleijn, D.P. V Immunomodulation of the NLRP3 Inflammasome in Atherosclerosis, Coronary Artery Disease, and Acute Myocardial Infarction. *J. Cardiovasc. Transl. Res.* **2021**, *14*, 23–34. [[CrossRef](#)] [[PubMed](#)]
50. Hemenway, G.; Frishman, W.H. Therapeutic Implications of NLRP3-Mediated Inflammation in Coronary Artery Disease. *Cardiol. Rev. March* **2021**. [[CrossRef](#)] [[PubMed](#)]
51. Kong, F.; Ye, B.; Lin, L.; Cai, X.; Huang, W.; Huang, Z. Atorvastatin suppresses NLRP3 inflammasome activation via TLR4/MyD88/NF- $\kappa$ B signaling in PMA-stimulated THP-1 monocytes. *Biomed. Pharm.* **2016**, *82*, 167–172. [[CrossRef](#)]
52. Wu, L.M.; Wu, S.G.; Chen, F.; Wu, Q.; Wu, C.M.; Kang, C.M.; He, X.; Zhang, R.Y.; Lu, Z.F.; Li, X.H.; et al. Atorvastatin inhibits pyroptosis through the lncRNA NEXN-AS1/NEXN pathway in human vascular endothelial cells. *Atherosclerosis* **2020**, *293*, 26–34. [[CrossRef](#)]
53. Westerterp, M.; Fotakis, P.; Ouimet, M.; Bochem, A.E.; Zhang, H.; Molusky, M.M.; Wang, W.; Abramowicz, S.; la Bastide-van Gemert, S.; Wang, N.; et al. Cholesterol Efflux Pathways Suppress Inflammasome Activation, NETosis, and Atherogenesis. *Circulation* **2018**, *138*, 898–912. [[CrossRef](#)] [[PubMed](#)]
54. Robertson, S.; Martínez, G.J.; Payet, C.A.; Barraclough, J.Y.; Celermajer, D.S.; Bursill, C.; Patel, S. Colchicine therapy in acute coronary syndrome patients acts on caspase-1 to suppress NLRP3 inflammasome monocyte activation. *Clin. Sci.* **2016**, *130*, 1237–1246. [[CrossRef](#)]
55. Ridker, P.M.; MacFadyen, J.G.; Everett, B.M.; Libby, P.; Thuren, T.; Glynn, R.J. Relationship of C-reactive protein reduction to cardiovascular event reduction following treatment with canakinumab: A secondary analysis from the CANTOS randomised controlled trial. *Lancet* **2018**, *391*, 319–328. [[CrossRef](#)]
56. Libby, P. Targeting Inflammatory Pathways in Cardiovascular Disease: The Inflammasome, Interleukin-1, Interleukin-6 and Beyond. *Cells* **2021**, *10*, 951. [[CrossRef](#)]
57. Kotyla, P.J.; Engelmann, M.; Giemza-Stokłosa, J.; Wnuk, B.; Islam, M.A. Thromboembolic Adverse Drug Reactions in Janus Kinase (JAK) Inhibitors: Does the Inhibitor Specificity Play a Role? *Int. J. Mol. Sci.* **2021**, *22*, 2449. [[CrossRef](#)]
58. Stellos, K.; Sauter, R.; Fahrleitner, M.; Grimm, J.; Stakos, D.; Emschermann, F.; Panagiota, V.; Gnerlich, S.; Perk, A.; Schönberger, T.; et al. Binding of oxidized low-density lipoprotein on circulating platelets is increased in patients with acute coronary syndromes and induces platelet adhesion to vascular wall in vivo—brief report. *Arter. Thromb. Vasc. Biol.* **2012**, *32*, 2017–2020. [[CrossRef](#)]
59. Sarma, J.; Laan, C.A.; Alam, S.; Jha, A.; Fox, K.A.; Dransfield, I. Increased platelet binding to circulating monocytes in acute coronary syndromes. *Circulation* **2002**, *105*, 2166–2171. [[CrossRef](#)]
60. Libby, P.; Ebert, B.L. CHIP (Clonal Hematopoiesis of Indeterminate Potential): Potent and Newly Recognized Contributor to Cardiovascular Risk. *Circulation* **2018**, *138*, 666–668. [[CrossRef](#)]
61. Laridan, E.; Martinod, K.; De Meyer, S.F. Neutrophil Extracellular Traps in Arterial and Venous Thrombosis. *Semin. Thromb. Hemost.* **2019**, *45*, 86–93. [[CrossRef](#)]
62. Vazquez-Garza, E.; Jerjes-Sanchez, C.; Navarrete, A.; Joya-Harrison, J.; Rodriguez, D. Venous thromboembolism: Thrombosis, inflammation, and immunothrombosis for clinicians. *J. Thromb. Thrombolysis* **2017**, *44*, 377–385. [[CrossRef](#)]

63. Satish, M.; Agrawal, D.K. Atherothrombosis and the NLRP3 inflammasome-endogenous mechanisms of inhibition. *Transl. Res.* **2020**, *215*, 75–85. [[CrossRef](#)]
64. Sharma, A.; Choi, J.S.Y.; Stefanovic, N.; Al-Sharea, A.; Simpson, D.S.; Mukhamedova, N.; Jandeleit-Dahm, K.; Murphy, A.J.; Sviridov, D.; Vince, J.E.; et al. Specific NLRP3 Inhibition Protects Against Diabetes-Associated Atherosclerosis. *Diabetes* **2021**, *70*, 772–787. [[CrossRef](#)]
65. John, C.; Garcia, C.; Buurman, W.; Azevedo, I.; Feve, B.; Ferré, P.; Halimi, S.; Baizri, H.; Bordier, L.; Guiu, G.; et al. Diabetes and inflammation: Fundamental aspects and clinical implications Related papers Leptin in Morbidly Obese Patients: No Role for Treatment of Morbid Obesity but Important in . . . Chronic Inflammation in Obesity and the Metabolic Syndrome. *Diabetes Metab.* **2010**, *36*, 327–338.
66. Heilbronn, L.; Campbell, L. Adipose Tissue Macrophages, Low Grade Inflammation and Insulin Resistance in Human Obesity. *Curr. Pharm. Des.* **2008**, *14*, 1225–1230. [[CrossRef](#)]
67. Weisberg, S.P.; McCann, D.; Desai, M.; Rosenbaum, M.; Leibel, R.L.; Ferrante, A.W. Obesity is associated with macrophage accumulation in adipose tissue. *J. Clin. Investig.* **2003**, *112*, 1796–1808. [[CrossRef](#)] [[PubMed](#)]
68. Wellen, K.E.; Hotamisligil, G.S. Obesity-induced inflammatory changes in adipose tissue. *J. Clin. Investig.* **2003**, *112*, 1785–1788. [[CrossRef](#)] [[PubMed](#)]
69. Cinti, S.; Mitchell, G.; Barbatelli, G.; Murano, I.; Ceresi, E.; Faloia, E.; Wang, S.; Fortier, M.; Greenberg, A.S.; Obin, M.S.; et al. Adipocyte death defines macrophage localization and function in adipose tissue of obese mice and humans. *J. Lipid Res.* **2005**, *46*, 2347–2355. [[CrossRef](#)]
70. Engin, A.B. Adipocyte-macrophage cross-talk in obesity. In *Advances in Experimental Medicine and Biology*; Springer: New York, NY, USA, 2017; Volume 960, pp. 327–343.
71. Kanda, H.; Tateya, S.; Tamori, Y.; Kotani, K.; Hiasa, K.I.; Kitazawa, R.; Kitazawa, S.; Miyachi, H.; Maeda, S.; Egashira, K.; et al. MCP-1 contributes to macrophage infiltration into adipose tissue, insulin resistance, and hepatic steatosis in obesity. *J. Clin. Invest.* **2006**, *116*, 1494–1505. [[CrossRef](#)]
72. Panee, J. Monocyte Chemoattractant Protein 1 (MCP-1) in Obesity and Diabetes. *Cytokine* **2012**, *60*, 1. [[CrossRef](#)] [[PubMed](#)]
73. Nevalainen, T.; Kananen, L.; Marttila, S.; Jylhävä, J.; Mononen, N.; Kähönen, M.; Raitakari, O.T.; Hervonen, A.; Jylhä, M.; Lehtimäki, T.; et al. Obesity accelerates epigenetic aging in middle-aged but not in elderly individuals. *Clin. Epigenetics* **2017**, *9*, 1–9. [[CrossRef](#)]
74. Salvestrini, V.; Sell, C.; Lorenzini, A. Obesity may accelerate the aging process. *Front. Endocrinol.* **2019**, *10*, 266. [[CrossRef](#)]
75. Wu, K.K.L.; Cheung, S.W.M.; Cheng, K.K.Y. NLRP3 Inflammasome Activation in Adipose Tissues and Its Implications on Metabolic Diseases. *Int. J. Mol. Sci.* **2020**, *21*, 4184. [[CrossRef](#)] [[PubMed](#)]
76. Ren, J.; Zhang, Y. Targeting Autophagy in Aging and Aging-Related Cardiovascular Diseases. *Trends Pharmacol. Sci.* **2018**, *39*, 1064. [[CrossRef](#)] [[PubMed](#)]
77. Garaulet, M.; Hernández-Morante, J.J.; De Heredia, F.P.; Tébar, F.J. Adiponectin, the controversial hormone. *Public Health Nutr.* **2007**, *10*, 1145–1150. [[CrossRef](#)]
78. Tilg, H.; Moschen, A.R. Adipocytokines: Mediators linking adipose tissue, inflammation and immunity. *Nat. Rev. Immunol.* **2006**, *6*, 772–783. [[CrossRef](#)]
79. Hui, X.; Lam, K.S.; Vanhoutte, P.M.; Xu, A. Adiponectin and cardiovascular health: An update. *Br. J. Pharmacol.* **2012**, *165*, 574–590. [[CrossRef](#)]
80. Ingelsson, E.; Larson, M.G.; Fox, C.S.; Yin, X.; Wang, T.J.; Lipinska, I.; Pou, K.M.; Hoffmann, U.; Benjamin, E.J.; Keaney, J.F.; et al. Clinical correlates of circulating visfatin levels in a community-based sample. *Diabetes Care* **2007**, *30*, 1278–1280. [[CrossRef](#)]
81. Fukuhara, A.; Matsuda, M.; Nishizawa, M.; Segawa, K.; Tanaka, M.; Kishimoto, K.; Matsuki, Y.; Murakami, M.; Ichisaka, T.; Murakami, H.; et al. Visfatin: A protein secreted by visceral fat that Mimics the effects of insulin. *Science* **2005**, *307*, 426–430. [[CrossRef](#)]
82. Antuna-Puente, B.; Feve, B.; Fellahi, S.; Bastard, J.P. Adipokines: The missing link between insulin resistance and obesity. *Diabetes Metab.* **2008**, *34*, 2–11. [[CrossRef](#)]
83. Bai, B.; Yang, Y.; Wang, Q.; Li, M.; Tian, C.; Liu, Y.; Aung, L.H.H.; Li, P.F.; Yu, T.; Chu, X.M. NLRP3 inflammasome in endothelial dysfunction. *Cell Death Dis.* **2020**, *11*, 776. [[CrossRef](#)]
84. Rahmouni, K.; Morgan, D.A. Hypothalamic arcuate nucleus mediates the sympathetic and arterial pressure responses to leptin. *Hypertension* **2007**, *49*, 647–652. [[CrossRef](#)] [[PubMed](#)]
85. Prenner, S.B.; Chirinos, J.A. Arterial stiffness in diabetes mellitus. *Atherosclerosis* **2015**, *238*, 370–379. [[CrossRef](#)] [[PubMed](#)]
86. Fantin, F.; Disegna, E.; Manzato, G.; Comellato, G.; Zoico, E.; Rossi, A.P.; Mazzali, G.; Rajkumar, C.; Zamboni, M. Adipokines and Arterial Stiffness in the Elderly. *Vasc. Health Risk Manag.* **2020**, *16*, 535–543. [[CrossRef](#)] [[PubMed](#)]
87. Esser, N.; L’Homme, L.; De Roover, A.; Kohonen, L.; Scheen, A.J.; Moutschen, M.; Piette, J.; Legrand-Poels, S.; Paquot, N. Obesity phenotype is related to NLRP3 inflammasome activity and immunological profile of visceral adipose tissue. *Diabetologia* **2013**, *56*, 2487–2497. [[CrossRef](#)]
88. Vandanmagsar, B.; Youm, Y.H.; Ravussin, A.; Galgani, J.E.; Stadler, K.; Mynatt, R.L.; Ravussin, E.; Stephens, J.M.; Dixit, V.D. The NLRP3 inflammasome instigates obesity-induced inflammation and insulin resistance. *Nat. Med.* **2011**, *17*, 179–189. [[CrossRef](#)]
89. Rheinheimer, J.; de Souza, B.M.; Cardoso, N.S.; Bauer, A.C.; Crispim, D. Current role of the NLRP3 inflammasome on obesity and insulin resistance: A systematic review. *Metabolism.* **2017**, *74*, 1–9. [[CrossRef](#)]

90. Ding, S.; Xu, S.; Ma, Y.; Liu, G.; Jang, H.; Fang, J. Modulatory Mechanisms of the NLRP3 Inflammasomes in Diabetes. *Biomolecules* **2019**, *9*, 850. [[CrossRef](#)]
91. López-Reyes, A.; Martínez-Armenta, C.; Espinosa-Velázquez, R.; Vázquez-Cárdenas, P.; Cruz-Ramos, M.; Palacios-Gonzalez, B.; Gomez-Quiroz, L.E.; Martínez-Nava, G.A. NLRP3 Inflammasome: The Stormy Link Between Obesity and COVID-19. *Front. Immunol.* **2020**, *11*, 2875. [[CrossRef](#)]
92. Dinarello, C.A. Interleukin 1 and interleukin 18 as mediators of inflammation and the aging process. *Am. J. Clin. Nutr.* **2006**, *83*, 447S–455S. [[CrossRef](#)]
93. Mundstock, E.; Sarria, E.E.; Zatti, H.; Mattos Louzada, F.; Kich Grun, L.; Herbert Jones, M.; Guma, F.T.C.R.; Mazzola, J.; Epifanio, M.; Stein, R.T.; et al. Effect of obesity on telomere length: Systematic review and meta-analysis. *Obesity* **2015**, *23*, 2165–2174. [[CrossRef](#)]
94. Gomes, N.M.V.; Ryder, O.A.; Houck, M.L.; Charter, S.J.; Walker, W.; Forsyth, N.R.; Austad, S.N.; Venditti, C.; Pagel, M.; Shay, J.W.; et al. Comparative biology of mammalian telomeres: Hypotheses on ancestral states and the roles of telomeres in longevity determination. *Aging Cell* **2011**, *10*, 761–768. [[CrossRef](#)] [[PubMed](#)]
95. Wang, C.Y.; Kim, H.H.; Hiroi, Y.; Sawada, N.; Salomone, S.; Benjamin, L.E.; Walsh, K.; Moskowitz, M.A.; Liao, J.K. Obesity Increases Vascular Senescence and Susceptibility to Ischemic Injury Through Chronic Activation of Akt and mTOR. *Sci. Signal.* **2009**, *2*, ra11. [[CrossRef](#)]
96. Cseh, K.; Baranyi, E.; Winkler, G. The role of cytokines of the innate and adaptive immune system in the regulation of insulin resistance. *Diabetologia* **1999**, *42*, 497–498.
97. Pickup, J.C.; Mattock, M.B.; Chusney, G.D.; Burt, D. NIDDM as a disease of the innate immune system: Association of acute-phase reactants and interleukin-6 with metabolic syndrome X. *Diabetologia* **1997**, *40*, 1286–1292. [[CrossRef](#)] [[PubMed](#)]
98. Pickup, J.C.; Crook, M.A. Is type II diabetes mellitus a disease of the innate immune system? *Diabetologia* **1998**, *41*, 1241–1248. [[CrossRef](#)] [[PubMed](#)]
99. Garay-Sevilla, M.E.; Rojas, A.; Portero-Otin, M.; Uribarri, J. Dietary AGEs as Exogenous Boosters of Inflammation. *Nutrients* **2021**, *13*, 2802. [[CrossRef](#)] [[PubMed](#)]
100. Frati, G.; Schirone, L.; Chimenti, I.; Yee, D.; Biondi-Zoccai, G.; Volpe, M.; Sciarretta, S. An overview of the inflammatory signalling mechanisms in the myocardium underlying the development of diabetic cardiomyopathy. *Cardiovasc. Res.* **2017**, *113*, 378–388. [[CrossRef](#)]
101. Basta, G.; Schmidt, A.M.; De Caterina, R. Advanced glycation end products and vascular inflammation: Implications for accelerated atherosclerosis in diabetes. *Cardiovasc. Res.* **2004**, *63*, 582–592. [[CrossRef](#)]
102. Van Der Lugt, T.; Weseler, A.R.; Gebbink, W.A.; Vrolijk, M.F.; Opperhuizen, A.; Bast, A. Dietary Advanced Glycation Endproducts Induce an Inflammatory Response in Human Macrophages in Vitro. *Nutrients* **2018**, *10*, 1868. [[CrossRef](#)]
103. Ren, X.; Ren, L.; Wei, Q.; Shao, H.; Chen, L.; Liu, N. Advanced glycation end-products decreases expression of endothelial nitric oxide synthase through oxidative stress in human coronary artery endothelial cells. *Cardiovasc. Diabetol.* **2017**, *16*, 1–12. [[CrossRef](#)]
104. Snelson, M.; Coughlan, M.T. Dietary Advanced Glycation End Products: Digestion, Metabolism and Modulation of Gut Microbial Ecology. *Nutrients* **2019**, *11*, 215. [[CrossRef](#)]
105. Garay-Sevilla, M.E.; Gomez-Ojeda, A.; González, I.; Luévano-Contreras, C.; Rojas, A. Contribution of RAGE axis activation to the association between metabolic syndrome and cancer. *Mol. Cell. Biochem.* **2021**, *476*, 1555–1573. [[CrossRef](#)]
106. Cardozo, A.K.; Ortis, F.; Storling, J.; Feng, Y.H.; Rasschaert, J.; Tonnesen, M.; Van Eylen, F.; Mandrup-Poulsen, T.; Herchuelz, A.; Eizirik, D.L. Cytokines downregulate the sarcoendoplasmic reticulum pump Ca<sup>2+</sup> ATPase 2b and deplete endoplasmic reticulum Ca<sup>2+</sup>, leading to induction of endoplasmic reticulum stress in pancreatic  $\beta$ -cells. *Diabetes* **2005**, *54*, 452–461. [[CrossRef](#)]
107. Cunha, D.A.; Hekerman, P.; Ladrière, L.; Bazzarra-Castro, A.; Ortis, F.; Wakeham, M.C.; Moore, F.; Rasschaert, J.; Cardozo, A.K.; Bellomo, E.; et al. Initiation and execution of lipotoxic ER stress in pancreatic  $\beta$ -cells. *J. Cell Sci.* **2008**, *121*, 2308–2318. [[CrossRef](#)]
108. Cani, P.D.; Osto, M.; Geurts, L.; Everard, A. Involvement of gut microbiota in the development of low-grade inflammation and type 2 diabetes associated with obesity. *Gut Microbes* **2012**, *3*, 279–288. [[CrossRef](#)]
109. Hartstra, A.V.; Bouter, K.E.C.; Bäckhed, F.; Nieuwdorp, M. Insights into the role of the microbiome in obesity and type 2 diabetes. *Diabetes Care* **2015**, *38*, 159–165. [[CrossRef](#)] [[PubMed](#)]
110. Sell, H.; Habich, C.; Eckel, J. Adaptive immunity in obesity and insulin resistance. *Nat. Rev. Endocrinol.* **2012**, *8*, 709–716. [[CrossRef](#)] [[PubMed](#)]
111. Klen, J.; Goričar, K.; Janež, A.; Dolžan, V. NLRP3 inflammasome polymorphism and macrovascular complications in type 2 diabetes patients. *J. Diabetes Res.* **2015**, *2015*, 1–6. [[CrossRef](#)] [[PubMed](#)]
112. Abderrazak, A.; Syrovets, T.; Couchie, D.; El Hadri, K.; Friguet, B.; Simmet, T.; Rouis, M. NLRP3 inflammasome: From a danger signal sensor to a regulatory node of oxidative stress and inflammatory diseases. *Redox Biol.* **2015**, *4*, 296–307. [[CrossRef](#)]
113. Gora, I.M.; Ciechanowska, A.; Ladyzynski, P. NLRP3 Inflammasome at the Interface of Inflammation, Endothelial Dysfunction, and Type 2 Diabetes. *Cells* **2021**, *10*, 314. [[CrossRef](#)]
114. Grant, R.W.; Dixit, V.D. Mechanisms of disease: Inflammasome activation and the development of type 2 diabetes. *Front. Immunol.* **2013**, *4*, 50. [[CrossRef](#)]
115. Verma, G.; Datta, M. IL-1 $\beta$  induces ER stress in a JNK dependent manner that determines cell death in human pancreatic epithelial MIA PaCa-2 cells. *Apoptosis* **2010**, *15*, 864–876. [[CrossRef](#)]



116. Arend, W.P.; Palmer, G.; Gabay, C. IL-1, IL-18, and IL-33 families of cytokines. *Immunol. Rev.* **2008**, *223*, 20–38. [[CrossRef](#)] [[PubMed](#)]
117. Brooks-Worrell, B.; Palmer, J.P. Immunology in the Clinic Review Series; focus on metabolic diseases: Development of islet autoimmune disease in type 2 diabetes patients: Potential sequelae of chronic inflammation. *Clin. Exp. Immunol.* **2012**, *167*, 40–46. [[CrossRef](#)] [[PubMed](#)]
118. Cavelti-Weder, C.; Babians-Brunner, A.; Keller, C.; Stahel, M.A.; Kurz-Levin, M.; Zayed, H.; Solinger, A.M.; Mandrup-Poulsen, T.; Dinarello, C.A.; Donath, M.Y. Effects of gevokizumab on glycemia and inflammatory markers in type 2 diabetes. *Diabetes Care* **2012**, *35*, 1654–1662. [[CrossRef](#)] [[PubMed](#)]
119. Pradhan, A.D.; Manson, J.E.; Rifai, N.; Buring, J.E.; Ridker, P.M. C-reactive protein, interleukin 6, and risk of developing type 2 diabetes mellitus. *J. Am. Med. Assoc.* **2001**, *286*, 327–334. [[CrossRef](#)] [[PubMed](#)]
120. Ryder, J.R.; Northrop, E.; Rudser, K.D.; Kelly, A.S.; Gao, Z.; Khoury, P.R.; Kimball, T.R.; Dolan, L.M.; Urbina, E.M. Accelerated Early Vascular Aging Among Adolescents With Obesity and/or Type 2 Diabetes Mellitus. *J. Am. Heart Assoc.* **2020**, *9*, e014891. [[CrossRef](#)]
121. Aroor, A.R.; DeMarco, V.G.; Jia, G.; Sun, Z.; Nistala, R.; Meininger, G.A.; Sowers, J.R. The Role of Tissue Renin-Angiotensin-Alдостерone System in the Development of Endothelial Dysfunction and Arterial Stiffness. *Front. Endocrinol.* **2013**, *4*, 161. [[CrossRef](#)]
122. Van Bussel, B.C.; Schouten, F.; Henry, R.M.; Schalkwijk, C.G.; De Boer, M.R.; Ferreira, I.; Smulders, Y.M.; Twisk, J.W.; Stehouwer, C.D. Endothelial dysfunction and low-grade inflammation are associated with greater arterial stiffness over a 6-year period. *Hypertension* **2011**, *58*, 588–595. [[CrossRef](#)]
123. Bover, J.; Aguilar, A.; Arana, C.; Molina, P.; Lloret, M.J.; Ochoa, J.; Berná, G.; Gutiérrez-Maza, Y.G.; Rodrigues, N.; D'Marco, L.; et al. Clinical Approach to Vascular Calcification in Patients With Non-dialysis Dependent Chronic Kidney Disease: Mineral-Bone Disorder-Related Aspects. *Front. Med.* **2021**, *8*, 614. [[CrossRef](#)] [[PubMed](#)]
124. Donate-Correa, J.; Mora-Fernández, C.; Martínez-Sanz, R.; Muros-De-Fuentes, M.; Pérez, H.; Meneses-Pérez, B.; Cazaña-Pérez, V.; Navarro-González, J.F. Expression of FGF23/KLOTHO system in human vascular tissue. *Int. J. Cardiol.* **2013**, *165*, 179–183. [[CrossRef](#)] [[PubMed](#)]
125. Salam, S.; Gallagher, O.; Gossiel, F.; Paggiosi, M.; Eastell, R.; Khwaja, A. Vascular calcification relationship to vascular biomarkers and bone metabolism in advanced chronic kidney disease. *Bone* **2021**, *143*, 115699. [[CrossRef](#)] [[PubMed](#)]
126. Rodríguez-Ortiz, M.E.; Alcalá-Díaz, J.F.; Canalejo, A.; Torres-Peña, J.D.; Gómez-Delgado, F.; Muñoz-Castañeda, J.R.; Delgado-Lista, J.; Rodríguez, M.; López-Miranda, J.; Almadén, Y. Fibroblast growth factor 23 predicts carotid atherosclerosis in individuals without kidney disease. The CORDIOPREV study. *Eur. J. Intern. Med.* **2020**, *74*, 79–85. [[CrossRef](#)] [[PubMed](#)]
127. Heiss, C.; Rodríguez-Mateos, A.; Kelm, M. Central Role of eNOS in the Maintenance of Endothelial Homeostasis. *Antioxid. Redox Signal.* **2015**, *22*, 1230. [[CrossRef](#)] [[PubMed](#)]
128. De Miguel, C.; Pelegrín, P.; Baroja-Mazo, A.; Cuevas, S. Emerging Role of the Inflammasome and Pyroptosis in Hypertension. *Int. J. Mol. Sci.* **2021**, *22*, 1064. [[CrossRef](#)]
129. Giacco, F.; Brownlee, M. Oxidative stress and diabetic complications. *Circ. Res.* **2010**, *107*, 1058–1070. [[CrossRef](#)]
130. Satoh, M.; Tabuchi, T.; Itoh, T.; Nakamura, M. NLRP3 inflammasome activation in coronary artery disease: Results from prospective and randomized study of treatment with atorvastatin or rosuvastatin. *Clin. Sci.* **2014**, *126*, 233–241. [[CrossRef](#)]
131. Shakeri, H.; Lemmens, K.; Gevaert, A.B.; De Meyer, G.R.Y.; Segers, V.F.M. Cellular senescence links aging and diabetes in cardiovascular disease. *Am. J. Physiol. Heart Circ. Physiol.* **2018**, *315*, H448–H462. [[CrossRef](#)]
132. Gurung, M.; Li, Z.; You, H.; Rodrigues, R.; Jump, D.B.; Morgun, A.; Shulzhenko, N. Role of gut microbiota in type 2 diabetes pathophysiology. *EBioMedicine* **2020**, *51*, 102590. [[CrossRef](#)] [[PubMed](#)]
133. Ussher, J.R.; Drucker, D.J. Cardiovascular Biology of the Incretin System. *Endocr. Rev.* **2012**, *33*, 187. [[CrossRef](#)]
134. Zhang, D.; Ma, M.; Liu, Y. Protective Effects of Incretin Against Age-Related Diseases. *Curr. Drug Deliv.* **2019**, *16*, 793–806. [[CrossRef](#)] [[PubMed](#)]
135. Drucker, D.J.; Nauck, M.A. The incretin system: Glucagon-like peptide-1 receptor agonists and dipeptidyl peptidase-4 inhibitors in type 2 diabetes. *Lancet* **2006**, *368*, 1696–1705. [[CrossRef](#)]
136. Nilsson, P. Early vascular aging syndrome: Background and proposed definitions. *Clin. Investig.* **2011**, *1*, 1523–1531. [[CrossRef](#)]
137. Brunt, V.E.; Gioscia-Ryan, R.A.; Richey, J.J.; Zigler, M.C.; Cuevas, L.M.; Gonzalez, A.; Vázquez-Baeza, Y.; Battson, M.L.; Smithson, A.T.; Gilley, A.D.; et al. Suppression of the gut microbiome ameliorates age-related arterial dysfunction and oxidative stress in mice. *J. Physiol.* **2019**, *597*, 2361–2378. [[CrossRef](#)]
138. Cryan, J.F.; Boehme, M.; Dinan, T.G. Is the fountain of youth in the gut microbiome? *J. Physiol.* **2019**, *597*, 2323–2324. [[CrossRef](#)]
139. Petrofsky, J.; Berk, L.; Al-Nakhli, H. The Influence of Autonomic Dysfunction Associated with Aging and Type 2 Diabetes on Daily Life Activities. *Exp. Diabetes Res.* **2012**, *2012*, 12. [[CrossRef](#)]
140. An, L.N.; Rong, N.; Ning, M.; Feng, L.L.; Chen, Z.H.; Liu, W.Q.; Ouyang, X.C.; Diao, F.R.; Han, Z.G.; Hong, J. High serum uric acid is associated with increased arterial stiffness in hypertension. *Aging* **2020**, *12*, 14569–14581. [[CrossRef](#)]
141. Weir, C.J.; Muir, S.W.; Walters, M.R.; Lees, K.R. Serum urate as an independent predictor of poor outcome and future vascular events after acute stroke. *Stroke* **2003**, *34*, 1951–1956. [[CrossRef](#)]
142. Olejnik, A.; Franczak, A.; Krzywonos-Zawadzka, A.; Kałużna-Oleksy, M.; Bil-Lula, I. The Biological Role of Klotho Protein in the Development of Cardiovascular Diseases. *Biomed. Res. Int.* **2018**, *171945*, 1–17. [[CrossRef](#)] [[PubMed](#)]

143. Matsumura, Y.; Aizawa, H.; Shiraki-Iida, T.; Nagai, R.; Kuro-O, M.; Nabeshima, Y.I. Identification of the human klotho gene and its two transcripts encoding membrane and secreted klotho protein. *Biochem. Biophys. Res. Commun.* **1998**, *242*, 626–630. [[CrossRef](#)] [[PubMed](#)]
144. Brandenburg, V.M.; Kleber, M.E.; Vervloet, M.G.; Larsson, T.E.; Tomaschitz, A.; Pilz, S.; Stojakovic, T.; Delgado, G.; Grammer, T.B.; Marx, N.; et al. Soluble klotho and mortality: The Ludwigshafen Risk and Cardiovascular Health Study. *Atherosclerosis* **2015**, *242*, 483–489. [[CrossRef](#)]
145. Memmos, E.; Sarafidis, P.; Pateinakis, P.; Tsiantoulas, A.; Faitatzidou, D.; Giamalis, P.; Vasilikos, V.; Papagianni, A. Soluble Klotho is associated with mortality and cardiovascular events in hemodialysis. *BMC Nephrol.* **2019**, *20*, 217. [[CrossRef](#)]
146. Lanzani, C.; Citterio, L.; Vezzoli, G. Klotho: A link between cardiovascular and non-cardiovascular mortality. *Clin. Kidney J.* **2020**, *13*, 926–932. [[CrossRef](#)]
147. Kamari, Y.; Fingrut, O.; Shaish, A.; Almog, T.; Kandel-Kfir, M.; Harats, D.; Rubinek, T.; Wolf, I. The Effect of Klotho Treatment on Atherogenesis, Blood Pressure, and Metabolic Parameters in Experimental Rodent Models. *Horm. Metab. Res.* **2016**, *48*, 196–200. [[CrossRef](#)]
148. Kuro-o, M.; Matsumura, Y.; Aizawa, H.; Kawaguchi, H.; Suga, T.; Utsugi, T.; Ohyama, Y.; Kurabayashi, M.; Kaname, T.; Kume, E.; et al. Mutation of the mouse klotho gene leads to a syndrome resembling ageing. *Nature* **1997**, *390*, 45–51. [[CrossRef](#)] [[PubMed](#)]
149. Lin, Y.; Sun, Z. Antiaging gene klotho attenuates pancreatic  $\beta$ -cell apoptosis in type 1 diabetes. *Diabetes* **2015**, *64*, 4298–4311. [[CrossRef](#)]
150. Saghiv, M.S.; Sira, D.B.; Goldhammer, E.; Sagiv, M. The effects of aerobic and anaerobic exercises on circulating soluble-Klotho and IGF-I in young and elderly adults and in CAD patients. *J. Circ. Biomark.* **2017**, *6*, 1849454417733388. [[CrossRef](#)]
151. Keles, N.; Caliskan, M.; Dogan, B.; Keles, N.N.; Kalcik, M.; Aksu, F.; Kostek, O.; Aung, S.M.; Isbilen, B.; Oguz, A. Low serum level of Klotho is an early predictor of atherosclerosis. *Tohoku J. Exp. Med.* **2015**, *237*, 17–23. [[CrossRef](#)] [[PubMed](#)]
152. Maekawa, Y.; Ishikawa, K.; Yasuda, O.; Oguro, R.; Hanasaki, H.; Kida, I.; Takemura, Y.; Ohishi, M.; Katsuya, T.; Rakugi, H. Klotho suppresses TNF- $\alpha$ -induced expression of adhesion molecules in the endothelium and attenuates NF- $\kappa$ B activation. *Endocrine* **2009**, *35*, 341–346. [[CrossRef](#)]
153. Hui, H.; Zhai, Y.; Ao, L.; Cleveland, J.C.; Liu, H.; Fullerton, D.A.; Meng, X. Klotho suppresses the inflammatory responses and ameliorates cardiac dysfunction in aging endotoxemic mice. *Oncotarget* **2017**, *8*, 15663–15676. [[CrossRef](#)]
154. Gu, H.; Jiang, W.; You, N.; Huang, X.; Li, Y.; Peng, X.; Dong, R.; Wang, Z.; Zhu, Y.; Wu, K.; et al. Soluble Klotho Improves Hepatic Glucose and Lipid Homeostasis in Type 2 Diabetes. *Mol. Ther.-Methods Clin. Dev.* **2020**, *18*, 811–823. [[CrossRef](#)]
155. Youn, J.C.; Kim, C.; Park, S.; Lee, S.H.; Kang, S.M.; Choi, D.; Son, N.H.; Shin, D.J.; Jang, Y. Adiponectin and progression of arterial stiffness in hypertensive patients. *Int. J. Cardiol.* **2013**, *163*, 316–319. [[CrossRef](#)]
156. Okamoto, Y.; Arita, Y.; Nishida, M.; Muraguchi, M.; Ouchi, N.; Takahashi, M.; Igura, T.; Inui, Y.; Kihara, S.; Nakamura, T.; et al. An adipocyte-derived plasma protein, adiponectin, adheres to injured vascular walls. *Horm. Metab. Res.* **2000**, *32*, 47–50. [[CrossRef](#)] [[PubMed](#)]
157. Choi, H.M.; Doss, H.M.; Kim, K.S. Multifaceted Physiological Roles of Adiponectin in Inflammation and Diseases. *Int. J. Mol. Sci.* **2020**, *21*, 1219. [[CrossRef](#)] [[PubMed](#)]
158. Nilsson, P.M. Early vascular ageing-A concept in development. *Eur. Endocrinol.* **2015**, *11*, 26–31. [[CrossRef](#)] [[PubMed](#)]
159. Cainzos-Achirica, M.; Glassner, K.; Zawahir, H.S.; Dey, A.K.; Agrawal, T.; Quigley, E.M.M.; Abraham, B.P.; Acquah, I.; Yahya, T.; Mehta, N.N.; et al. Inflammatory Bowel Disease and Atherosclerotic Cardiovascular Disease: JACC Review Topic of the Week. *J. Am. Coll. Cardiol.* **2020**, *76*, 2895–2905. [[CrossRef](#)]
160. Skeoch, S.; Bruce, I.N. Atherosclerosis in rheumatoid arthritis: Is it all about inflammation? *Nat. Rev. Rheumatol.* **2015**, *11*, 390–400. [[CrossRef](#)] [[PubMed](#)]
161. Sagris, M.; Theofilis, P.; Antonopoulos, A.S.; Oikonomou, E. Inflammation in Coronary Microvascular Dysfunction. *Int. J. Mol. Sci.* **2021**, *22*, 3471. [[CrossRef](#)]
162. Rizzoni, D.; Rizzoni, M.; Nardin, M.; Chiarini, G.; Agabiti-Rosei, C.; Aggiusti, C.; Painsi, A.; Salvetti, M.; Muiesan, M.L. Vascular Aging and Disease of the Small Vessels. *High Blood Press. Cardiovasc. Prev.* **2019**, *26*, 183–189. [[CrossRef](#)]
163. Mäki-Petäjä, K.M.; Elkhawad, M.; Cheriyan, J.; Joshi, F.R.; Östör, A.J.K.; Hall, F.C.; Rudd, J.H.F.; Wilkinson, I.B. Anti-tumor necrosis factor- $\alpha$  therapy reduces aortic inflammation and stiffness in patients with rheumatoid arthritis. *Circulation* **2012**, *126*, 2473–2480. [[CrossRef](#)]
164. Sozeri, B.; Atikan, B.Y.; Ozdemir, K.; Mir, S. Assessment of vascular function in systemic onset juvenile idiopathic arthritis. *Clin. Rheumatol.* **2016**, *35*, 1699–1703. [[CrossRef](#)] [[PubMed](#)]
165. Nilsson, J.; Gonçalves, I.; Edsfieldt, A. Chronic Inflammation and Atherosclerosis. In *Early Vascular Aging (EVA)*; Academic Press: Cambridge, MA, USA, 2015; pp. 157–167.
166. Zanolini, L.; Briet, M.; Empana, J.P.; Cunha, P.G.; Maki-Petaja, K.M.; Protogerou, A.D.; Tedgui, A.; Touyz, R.M.; Schiffrin, E.L.; Spronck, B.; et al. Vascular consequences of inflammation: A position statement from the ESH Working Group on Vascular Structure and Function and the ARTERY Society. *Undefined* **2020**, *38*, 1682–1698. [[CrossRef](#)] [[PubMed](#)]
167. Fernández-Friera, L.; Fuster, V.; López-Melgar, B.; Oliva, B.; Sánchez-González, J.; Macías, A.; Pérez-Asenjo, B.; Zamudio, D.; Alonso-Farto, J.C.; España, S.; et al. Vascular Inflammation in Subclinical Atherosclerosis Detected by Hybrid PET/MRI. *J. Am. Coll. Cardiol.* **2019**, *73*, 1371–1382. [[CrossRef](#)]



168. Antonopoulos, A.S.; Sanna, F.; Sabharwal, N.; Thomas, S.; Oikonomou, E.K.; Herdman, L.; Margaritis, M.; Shirodaria, C.; Kampoli, A.M.; Akoumianakis, I.; et al. Detecting human coronary inflammation by imaging perivascular fat. *Sci. Transl. Med.* **2017**, *9*, eaal2658. [[CrossRef](#)]
169. Chen, Y.; Qin, Z.; Wang, Y.; Li, X.; Zheng, Y.; Liu, Y. Role of Inflammation in Vascular Disease-Related Perivascular Adipose Tissue Dysfunction. *Front. Endocrinol.* **2021**, *12*, 957. [[CrossRef](#)]
170. Nosalski, R.; Siedlinski, M.; Denby, L.; McGinnigle, E.; Nowak, M.; Cat, A.N.D.; Medina-Ruiz, L.; Cantini, M.; Skiba, D.; Wilk, G.; et al. T-cell-derived miRNA-214 mediates perivascular fibrosis in hypertension. *Circ. Res.* **2020**, *126*, 988–1003. [[CrossRef](#)]
171. Polonis, K.; Wawrzyniak, R.; Dagher-Wojtkowiak, E.; Szyndler, A.; Chrostowska, M.; Melander, O.; Hoffmann, M.; Kordalewska, M.; Raczak-Gutknecht, J.; Bartosińska, E.; et al. Metabolomic Signature of Early Vascular Aging (EVA) in Hypertension. *Front. Mol. Biosci.* **2020**, *7*, 12. [[CrossRef](#)] [[PubMed](#)]
172. Muñoz-Espín, D.; Serrano, M. Cellular senescence: From physiology to pathology. *Nat. Rev. Mol. Cell Biol.* **2014**, *15*, 482–496. [[CrossRef](#)]
173. Yin, H.; Pickering, J.G. Cellular Senescence and Vascular Disease: Novel Routes to Better Understanding and Therapy. *Can. J. Cardiol.* **2016**, *32*, 612–623. [[CrossRef](#)]
174. Clayton, Z.S.; Hutton, D.A.; Mahoney, S.A.; Seals, D.R. Anthracycline chemotherapy-mediated vascular dysfunction as a model of accelerated vascular aging. *Aging Cancer* **2021**, *2*, 45–69. [[CrossRef](#)] [[PubMed](#)]
175. D’Onofrio, N.; Servillo, L.; Balestrieri, M.L. SIRT1 and SIRT6 Signaling Pathways in Cardiovascular Disease Protection. *Antioxid. Redox Signal.* **2018**, *28*, 711–732. [[CrossRef](#)]
176. Blankstein, R.; Libby, P.; Bhatt, D.L. Arterial Inflammation: The Heat Before the Storm. *J. Am. Coll. Cardiol.* **2019**, *73*, 1383–1385. [[CrossRef](#)]
177. Laurent, S.; Boutouyrie, P.; Cunha, P.G.; Lacolley, P.; Nilsson, P.M. Concept of Extremes in Vascular Aging: From Early Vascular Aging to Supernormal Vascular Aging. *Hypertension* **2019**, *74*, 218–228. [[CrossRef](#)] [[PubMed](#)]
178. Laurent, S.; Boutouyrie, P. Arterial Stiffness and Hypertension in the Elderly. *Front. Cardiovasc. Med.* **2020**, *7*, 544302. [[CrossRef](#)] [[PubMed](#)]
179. Bruno, R.M.; Nilsson, P.M.; Engström, G.; Wadström, B.N.; Empana, J.P.; Boutouyrie, P.; Laurent, S. Early and supernormal vascular aging: Clinical characteristics and association with incident cardiovascular events. *Hypertension* **2020**, *76*, 1616–1624. [[CrossRef](#)]
180. Antza, C.; Doundoulakis, I.; Akrivos, E.; Stabouli, S.; Trakatelli, C.; Dumas, M.; Kotsis, V. Early Vascular Aging Risk Assessment from Ambulatory Blood Pressure Monitoring: The Early Vascular Aging Ambulatory Score. *Am. J. Hypertens.* **2018**, *31*, 1197–1204. [[CrossRef](#)]
181. Westerink, J.; Visseren, F.L.J. Pharmacological and non-pharmacological interventions to influence adipose tissue function. *Cardiovasc. Diabetol.* **2011**, *10*, 13. [[CrossRef](#)]
182. Cannataro, R.; Caroleo, M.C.; Fazio, A.; Torre, C.L.; Plastina, P.; Gallelli, L.; Lauria, G.; Cione, E. Ketogenic Diet and microRNAs Linked to Antioxidant Biochemical Homeostasis. *Antioxidants* **2019**, *8*, 269. [[CrossRef](#)]
183. Dowis, K.; Banga, S. The potential health benefits of the ketogenic diet: A narrative review. *Nutrients* **2021**, *13*, 1654. [[CrossRef](#)] [[PubMed](#)]
184. Shivappa, N.; Godos, J.; Hébert, J.R.; Wirth, M.D.; Piuri, G.; Speciani, A.F.; Grosso, G. Dietary Inflammatory Index and Cardiovascular Risk and Mortality—A Meta-Analysis. *Nutrients* **2018**, *10*, 200. [[CrossRef](#)] [[PubMed](#)]
185. Baye, E.; Kiriakova, V.; Uribarri, J.; Moran, L.J.; De Courten, B. Consumption of diets with low advanced glycation end products improves cardiometabolic parameters: Meta-analysis of randomised controlled trials. *Sci. Rep.* **2017**, *7*, 2266. [[CrossRef](#)]
186. Tuttolomondo, A.; Simonetta, I.; Daidone, M.; Mogavero, A.; Ortello, A.; Pinto, A. Metabolic and Vascular Effect of the Mediterranean Diet. *Int. J. Mol. Sci.* **2019**, *20*, 4716. [[CrossRef](#)]
187. de la Puente, M.F.; Hernández-Alonso, P.; Canudas, S.; Marti, A.; Fitó, M.; Razquin, C.; Salas-Salvadó, J. Modulation of Telomere Length by Mediterranean Diet, Caloric Restriction, and Exercise: Results from PREDIMED-Plus Study. *Antioxidants* **2021**, *10*, 1596. [[CrossRef](#)] [[PubMed](#)]
188. García-Calzón, S.; Martínez-González, M.A.; Razquin, C.; Arós, F.; Lapetra, J.; Martínez, J.A.; Zalba, G.; Marti, A. Mediterranean diet and telomere length in high cardiovascular risk subjects from the PREDIMED-NAVARRA study. *Clin. Nutr.* **2016**, *35*, 1399–1405. [[CrossRef](#)]
189. Tozsér, J.; Benko, S. Natural Compounds as Regulators of NLRP3 Inflammasome-Mediated IL-1 $\beta$  Production. *Mediat. Inflamm.* **2016**, *2016*, 1–16. [[CrossRef](#)] [[PubMed](#)]
190. Fan, R.; You, M.; Toney, A.M.; Kim, J.; Giraud, D.; Xian, Y.; Ye, F.; Gu, L.; Ramer-Tait, A.E.; Chung, S. Red Raspberry Polyphenols Attenuate High-Fat Diet-Driven Activation of NLRP3 Inflammasome and its Paracrine Suppression of Adipogenesis via Histone Modifications. *Mol. Nutr. Food Res.* **2020**, *64*, 1900995. [[CrossRef](#)]
191. Wei, J.; Xiang, X.H.; Tang, Y.; Qin, D.L.; Wu, J.M.; Yu, C.L.; Qiu, W.Q.; Wu, A.G.; Lv, H. Bin Lychee seed polyphenol protects blood–retinal barrier by increasing tight joint proteins and inhibiting the activation of TLR4/MYD88/NF- $\kappa$ B-mediated NLRP3 inflammasome. *Food Agric. Immunol.* **2021**, *32*, 516–539. [[CrossRef](#)]
192. Wang, D.; Zhang, M.; Wang, T.; Cai, M.; Qian, F.; Sun, Y.; Wang, Y. Green tea polyphenols prevent lipopolysaccharide-induced inflammatory liver injury in mice by inhibiting NLRP3 inflammasome activation. *Food Funct.* **2019**, *10*, 3898–3908. [[CrossRef](#)]

193. Frolinger, T.; Pasinetti, G. Polyphenolic Compounds Ameliorate Stress-induced Depression by Preventing NLRP3 Inflammasome Priming (P19-011-19). *Curr. Dev. Nutr.* **2019**, *3*. [[CrossRef](#)]
194. Wang, D.; Gao, Q.; Wang, T.; Kan, Z.; Li, X.; Hu, L.; Peng, C.Y.; Qian, F.; Wang, Y.; Granato, D. Green tea polyphenols and epigallocatechin-3-gallate protect against perfluorodecanoic acid induced liver damage and inflammation in mice by inhibiting NLRP3 inflammasome activation. *Food Res. Int.* **2020**, *127*, 108628. [[CrossRef](#)] [[PubMed](#)]
195. Huang, C.C.; Lin, W.T.; Hsu, F.L.; Tsai, P.W.; Hou, C.C. Metabolomics investigation of exercise-modulated changes in metabolism in rat liver after exhaustive and endurance exercises. *Eur. J. Appl. Physiol.* **2010**, *108*, 557–566. [[CrossRef](#)]
196. Bradley, R.L.; Jeon, J.Y.; Liu, F.F.; Maratos-Flier, E. Voluntary exercise improves insulin sensitivity and adipose tissue inflammation in diet-induced obese mice. *Am. J. Physiol. Endocrinol. Metab.* **2008**, *295*, E586–E594. [[CrossRef](#)] [[PubMed](#)]
197. Fossati, C.; Torre, G.; Borriore, P.; Giombini, A.; Fagnani, F.; Turchetta, M.; Albo, E.; Casasco, M.; Parisi, A.; Pigozzi, F. Biohumoral Indicators Influenced by Physical Activity in the Elderly. *J. Clin. Med.* **2020**, *9*, 1115. [[CrossRef](#)]
198. Plaisance, E.P.; Grandjean, P.W. Physical activity and high-sensitivity C-reactive protein. *Sports Med.* **2006**, *36*, 443–458. [[CrossRef](#)]
199. Javaid, H.M.A.; Sahar, N.E.; ZhuGe, D.-L.; Huh, J.Y. Exercise Inhibits NLRP3 Inflammasome Activation in Obese Mice via the Anti-Inflammatory Effect of Meteorin-like. *Cells* **2021**, *10*, 3480. [[CrossRef](#)]
200. Ertek, S.; Cicero, A. Impact of physical activity on inflammation: Effects on cardiovascular disease risk and other inflammatory conditions. *Arch. Med. Sci.* **2012**, *8*, 794. [[CrossRef](#)]
201. Ridker, P.M.; Danielson, E.; Fonseca, F.A.H.; Genest, J.; Gotto, A.M.; Kastelein, J.J.P.; Koenig, W.; Libby, P.; Lorenzatti, A.J.; MacFadyen, J.G.; et al. Rosuvastatin to Prevent Vascular Events in Men and Women with Elevated C-Reactive Protein. *N. Engl. J. Med.* **2008**, *359*, 2195–2207. [[CrossRef](#)] [[PubMed](#)]
202. Tousoulis, D.; Koniari, K.; Antoniades, C.; Papageorgiou, N.; Miliou, A.; Noutsou, M.; Nikolopoulou, A.; Marinou, K.; Stefanadi, E.; Siasos, G.; et al. Combined effects of atorvastatin and metformin on glucose-induced variations of inflammatory process in patients with diabetes mellitus. *Int. J. Cardiol.* **2011**, *149*, 46–49. [[CrossRef](#)]
203. Pfützner, A.; Hanefeld, M.; Lübken, G.; Weber, M.M.; Karaglannis, E.; Köhler, C.; Hohberg, C.; Forst, T. Visfatin: A putative biomarker for metabolic syndrome is not influenced by pioglitazone or simvastatin treatment in nondiabetic patients at cardiovascular risk – results from the PIOSTAT study. *Horm. Metab. Res.* **2007**, *39*, 764–768. [[CrossRef](#)] [[PubMed](#)]
204. Kostapanos, M.S.; Derdemezis, C.S.; Filippatos, T.D.; Millionis, H.J.; Kiortsis, D.N.; Tselepis, A.D.; Elisaf, M.S. Effect of rosuvastatin treatment on plasma visfatin levels in patients with primary hyperlipidemia. *Eur. J. Pharmacol.* **2008**, *578*, 249–252. [[CrossRef](#)]
205. Zhao, T.X.; Mallat, Z. Targeting the Immune System in Atherosclerosis: JACC State-of-the-Art Review. *J. Am. Coll. Cardiol.* **2019**, *73*, 1691–1706. [[CrossRef](#)]
206. Vasamsetti, S.B.; Karnewar, S.; Kanugula, A.K.; Thatipalli, A.R.; Kumar, J.M.; Kotamraju, S. Metformin inhibits monocyte-to-macrophage differentiation via AMPK-mediated inhibition of STAT3 activation: Potential role in atherosclerosis. *Diabetes* **2015**, *64*, 2028–2041. [[CrossRef](#)]
207. Hattori, Y.; Hattori, K.; Hayashi, T. Pleiotropic benefits of metformin: Macrophage targeting its anti-inflammatory mechanisms. *Diabetes* **2015**, *64*, 1907–1909. [[CrossRef](#)] [[PubMed](#)]
208. Jennewein, C.; Kuhn, A.-M.; Schmidt, M.V.; Meilladec-Jullig, V.; von Knethen, A.; Gonzalez, F.J.; Brüne, B. SUMOylation of Peroxisome Proliferator-Activated Receptor  $\gamma$  by Apoptotic Cells Prevents Lipopolysaccharide-Induced NCoR Removal from  $\kappa$ B Binding Sites Mediating Transrepression of Proinflammatory Cytokines. *J. Immunol.* **2008**, *181*, 5646–5652. [[CrossRef](#)]
209. Pascual, G.; Fong, A.L.; Ogawa, S.; Gamliel, A.; Li, A.C.; Perissi, V.; Rose, D.W.; Willson, T.M.; Rosenfeld, M.G.; Glass, C.K. A SUMOylation-dependent pathway mediates transrepression of inflammatory response genes by PPAR- $\gamma$ . *Nature* **2005**, *437*, 759–763. [[CrossRef](#)] [[PubMed](#)]
210. Zelcer, N.; Tontonoz, P. SUMOylation and PPAR $\gamma$ : Wrestling with inflammatory signaling. *Cell Metab.* **2005**, *2*, 273–275. [[CrossRef](#)]
211. Cowie, M.R.; Fisher, M. SGLT2 inhibitors: Mechanisms of cardiovascular benefit beyond glycaemic control. *Nat. Rev. Cardiol.* **2020**, *17*, 761–772. [[CrossRef](#)]
212. Kim, S.R.; Lee, S.G.; Kim, S.H.; Kim, J.H.; Choi, E.; Cho, W.; Rim, J.H.; Hwang, I.; Lee, C.J.; Lee, M.; et al. SGLT2 inhibition modulates NLRP3 inflammasome activity via ketones and insulin in diabetes with cardiovascular disease. *Nat. Commun.* **2020**, *11*, 1–11. [[CrossRef](#)]
213. Birnbaum, Y.; Bajaj, M.; Yang, H.C.; Ye, Y. Combined SGLT2 and DPP4 Inhibition Reduces the Activation of the Nlrp3/ASC Inflammasome and Attenuates the Development of Diabetic Nephropathy in Mice with Type 2 Diabetes. *Cardiovasc. Drugs Ther.* **2018**, *32*, 135–145. [[CrossRef](#)] [[PubMed](#)]
214. Kim Chung, L.T.; Hosaka, T.; Yoshida, M.; Harada, N.; Sakaue, H.; Sakai, T.; Nakaya, Y. Exendin-4, a GLP-1 receptor agonist, directly induces adiponectin expression through protein kinase A pathway and prevents inflammatory adipokine expression. *Biochem. Biophys. Res. Commun.* **2009**, *390*, 613–618. [[CrossRef](#)]
215. Ridker, P.M.; Everett, B.M.; Thuren, T.; MacFadyen, J.G.; Chang, W.H.; Ballantyne, C.; Fonseca, F.; Nicolau, J.; Koenig, W.; Anker, S.D.; et al. Antiinflammatory Therapy with Canakinumab for Atherosclerotic Disease. *N. Engl. J. Med.* **2017**, *377*, 1119–1131. [[CrossRef](#)]
216. Larsen, C.M.; Faulenbach, M.; Vaag, A.; Vølund, A.; Ehses, J.A.; Seifert, B.; Mandrup-Poulsen, T.; Donath, M.Y. Interleukin-1-Receptor Antagonist in Type 2 Diabetes Mellitus. *N. Engl. J. Med.* **2007**, *356*, 1517–1526. [[CrossRef](#)] [[PubMed](#)]

217. Van Tassell, B.W.; Abouzaki, N.A.; Erdle, C.O.; Carbone, S.; Trankle, C.R.; Melchior, R.D.; Turlington, J.S.; Thurber, C.J.; Christopher, S.; Dixon, D.L.; et al. Interleukin-1 Blockade in Acute Decompensated Heart Failure: A Randomized, Double-Blinded, Placebo-Controlled Pilot Study. *J. Cardiovasc. Pharmacol.* **2016**, *67*, 544–551. [[CrossRef](#)]
218. Klingenberg, R.; Nitschmann, S. Colchicine treatment after myocardial infarction: Colchicine Cardiovascular Outcomes Trial (COLCOT). *Internist* **2020**, *61*, 766–769. [[CrossRef](#)] [[PubMed](#)]
219. Samuel, M.; Tardif, J.-C.; Khairy, P.; Roubille, F.; Waters, D.D.; Grégoire, J.C.; Pinto, F.J.; Maggioni, A.P.; Diaz, R.; Berry, C.; et al. Cost-effectiveness of low-dose colchicine after myocardial infarction in the Colchicine Cardiovascular Outcomes Trial (COLCOT). *Eur. Hear. J.-Qual. Care Clin. Outcomes* **2020**, *7*, 486–495. [[CrossRef](#)] [[PubMed](#)]
220. Hennessy, T.; Soh, L.; Bowman, M.; Kurup, R.; Schultz, C.; Patel, S.; Hillis, G.S. The Low Dose Colchicine after Myocardial Infarction (LoDoCo-MI) study: A pilot randomized placebo controlled trial of colchicine following acute myocardial infarction. *Am. Heart J.* **2019**, *215*, 62–69. [[CrossRef](#)]
221. Xie, Q.; Wei, T.; Huang, C.; Liu, P.; Sun, M.; Shen, W.; Gao, P. Nebivolol ameliorates cardiac NLRP3 inflammasome activation in a juvenile-adolescent animal model of diet-induced obesity. *Sci. Rep.* **2016**, *6*, 34326. [[CrossRef](#)] [[PubMed](#)]
222. Ward, R.; Li, W.; Abdul, Y.; Jackson, L.D.; Dong, G.; Jamil, S.; Filosa, J.; Fagan, S.C.; Ergul, A. NLRP3 inflammasome inhibition with MCC950 improves diabetes-mediated cognitive impairment and vasoneuronal remodeling after ischemia. *Pharmacol. Res.* **2019**, *142*, 237–250. [[CrossRef](#)]
223. Pavillard, L.E.; Cañadas-Lozano, D.; Alcocer-Gómez, E.; Marín-Aguilar, F.; Pereira, S.; Robertson, A.A.B.; Muntané, J.; Ryffel, B.; Cooper, M.A.; Quiles, J.L.; et al. NLRP3-inflammasome inhibition prevents high fat and high sugar diets-induced heart damage through autophagy induction. *Oncotarget* **2017**, *8*, 99740–99756. [[CrossRef](#)] [[PubMed](#)]
224. Van Der Heijden, T.; Kritikou, E.; Venema, W.; Van Duijn, J.; Van Santbrink, P.J.; Slütter, B.; Foks, A.C.; Bot, I.; Kuiper, J. NLRP3 Inflammasome Inhibition by MCC950 Reduces Atherosclerotic Lesion Development in Apolipoprotein E-Deficient Mice-Brief Report. *Arterioscler. Thromb. Vasc. Biol.* **2017**, *37*, 1457–1461. [[CrossRef](#)]
225. Matsuoka, T.; Yoshimatsu, G.; Sakata, N.; Kawakami, R.; Tanaka, T.; Yamada, T.; Yoshida, Y.; Hasegawa, S.; Kodama, S. Inhibition of NLRP3 inflammasome by MCC950 improves the metabolic outcome of islet transplantation by suppressing IL-1 $\beta$  and islet cellular death. *Sci. Rep.* **2020**, *10*, 17920. [[CrossRef](#)]
226. Hu, M.C.; Shi, M.; Gillings, N.; Flores, B.; Takahashi, M.; Kuro-o, M.; Moe, O.W. Recombinant  $\alpha$ -Klotho may be prophylactic and therapeutic for acute to chronic kidney disease progression and uremic cardiomyopathy. *Kidney Int.* **2017**, *91*, 1104–1114. [[CrossRef](#)]
227. Yao, Y.; Wang, Y.; Zhang, Y.; Liu, C. Klotho ameliorates oxidized low density lipoprotein (ox-LDL)-induced oxidative stress via regulating LOX-1 and PI3K/Akt/eNOS pathways. *Lipids Health Dis.* **2017**, *16*, 77. [[CrossRef](#)] [[PubMed](#)]