

Upper Gastrointestinal Tract Involvement in Inflammatory Bowel Diseases: Histologic Clues and Pitfalls

Bence Kővári, MD, PhD*† and Rish K. Pai, MD, PhD‡

Abstract: The upper gastrointestinal (UGI) manifestations of inflammatory bowel diseases (IBDs) are frequently obscured by classic ileal and colonic symptoms and are reported to involve only 0.5% to 4% of adult patients. However, because of the improvement of endoscopic techniques and the growing use of esophagogastroduodenoscopy with biopsy, both asymptomatic and clinically significant esophageal, gastric, and duodenal manifestations are increasingly recognized. The UGI involvement in IBD was historically synonymous with Crohn's disease (CD), but the doctrine of ulcerative colitis (UC) being limited to the colon has been challenged, and UC-related gastroduodenal lesions have been reported. The diagnosis of UGI IBD should ideally rely on a combination of the clinical history, endoscopic picture, and histologic features. Although endoscopic changes such as aphthoid or longitudinal ulcers and bamboo-joint-like pattern are suggestive of CD, histologic evaluation increases the sensitivity of the IBD diagnosis since histologic alterations may be present in endoscopically unremarkable mucosa. Conversely, in many cases, the histologic findings are nonspecific, and the knowledge of clinical history is vital for reaching an accurate diagnosis. The presence of epithelioid granuloma is highly suggestive of CD but is present in a minority of CD cases; thus, pathologists should be aware of how to diagnose UGI IBD in the absence of granulomata. This article reviews the most important clinical, endoscopic, and histologic features of IBD-associated esophagitis, gastritis, and duodenitis, as well as the IBD-related manifestations in the biliary tract and the postcolectomy setting.

Key Words: inflammatory bowel disease, Crohn's disease, ulcerative colitis, esophagus, stomach, duodenum, pouchitis, primary sclerosing cholangitis

(*Adv Anat Pathol* 2022;29:2–14)

Although upper gastrointestinal (UGI) involvement of Crohn's disease (CD) and ulcerative colitis (UC) is typically obscured by the terminal ileal and colonic pathology, both asymptomatic and clinically significant

esophageal, gastric, and duodenal manifestations are increasingly recognized, including complications with important management implications such as obstruction, fistulae, and perforation. The reported prevalence of UGI varies considerably because of the diversity of the applied definition of UGI involvement, methodology (endoscopy vs. histology), the type of inflammatory bowel disease (IBD) (ie, CD vs. UC), and patient populations (ie, pediatric vs. adult). A recent systematic review reported an overall prevalence of 34% in a total of 2511 CD patients.¹ A recent study investigated the temporal trends of the frequency of UGI involvement. While the prevalence of esophagogastroduodenal involvement was 5.1% between 1955 and 1995, it increased significantly to 11.3% for patients diagnosed between 2009 and 2016.² The increased detection rate can be ascribed to the improvement of endoscopic techniques and the growing use of esophagogastroduodenoscopy with histologic evaluation.

The diagnosis of UGI involvement of IBDs should ideally rely on a combination of clinical history, endoscopy, and histology. However, there is no consensus on whether UGI involvement should be histologically confirmed or can be established solely based on clinical or endoscopic features. Furthermore, there is no consensus on whether asymptomatic adult patients should undergo UGI evaluation to identify silent histologic inflammation. For example, the Montreal classification system recognized an independent category of UGI involvement in CD without specifying what methodology should be used to reach the diagnosis.³ Although endoscopic changes such as aphthoid or longitudinal ulcers and the presence of a bamboo-joint-like pattern may be suggestive of the disease, histologic evaluation increases the sensitivity of the IBD diagnosis since histologic alterations may be present in endoscopically unremarkable mucosa.⁴ Conversely, in many cases, the histologic findings are nonspecific. The presence of epithelioid granuloma is highly suggestive of CD, but it can only be recognized in a minority of cases. Therefore, in many patients, the diagnosis of UGI involvement of IBD cannot be established with certainty without proper clinical information and the cautious exclusion of other inflammatory diseases. Furthermore, some guidelines recommend upper endoscopy to be performed in patients with a preliminary diagnosis of IBD-unclassified to discriminate between CD and UC (eg, by recognizing strictures, fistulas, or epithelioid granulomas).⁴⁻⁷ The majority of IBD patients with UGI involvement typically either show concurrent ileocolonic disease or were previously diagnosed with lower gastrointestinal (GI) IBD. Nevertheless, up to 13% of newly diagnosed adult and almost a third of pediatric patients have isolated UGI manifestations.²

It is widely accepted that esophagogastroduodenal manifestations of IBD are more common in children compared with adults. Symptomatic UGI involvement is

From the *Department of Pathology, Henry Lee Moffitt Cancer Center and Research Institute, Tampa, FL; †Department of Laboratory Medicine and Pathology, Mayo Clinic Arizona, Scottsdale, AZ; and ‡Department of Pathology, University of Szeged and Albert Szent-Györgyi Health Center, Szeged, Hungary.

All authors contributed to the drafting and editing of this manuscript. R.K.P. has received consulting fees from Alimentiv Inc., Eli Lilly, AbbVie, Allergan, PathAI, and Genentech. B.K. has no funding or conflict of interest to disclose.

Reprints: Bence Kővári, MD, PhD, Moffitt Cancer Center, Magnolia Campus, 12902 USF Magnolia Drive, Tampa, FL 33612 (e-mails: kovari.bence.p@gmail.com; bence.kovari@moffitt.org).

All figures can be viewed online in color at www.anatomicpathology.com. Copyright © 2021 The Author(s). Published by Wolters Kluwer Health, Inc. This is an open access article distributed under the terms of the Creative Commons Attribution-Non Commercial-No Derivatives License 4.0 (CCBY-NC-ND), where it is permissible to download and share the work provided it is properly cited. The work cannot be changed in any way or used commercially without permission from the journal.

reported to be present in only ~5% of adult patients. However, since esophagogastroduodenoscopy is not recommended as part of the routine clinical diagnostic workup in the adult population,^{5–8} many cases with mild esophageal, gastric, and duodenal manifestations may remain undiagnosed. Conversely, most pediatric gastroenterology guidelines advise esophagogastroduodenoscopy at the time of the initial diagnosis with biopsy sampling from all segments of the examined GI tract, even in the absence of endoscopic alterations.^{9,10} Therefore, the presence of esophagogastroduodenal disease is understandably higher in the pediatric setting, with a prevalence reported in the 30% to 50% range.¹¹ If esophagogastroduodenoscopy is regularly performed in asymptomatic adult patients, the rate of UGI manifestations increases to the same order of magnitude as in the pediatric populations.^{1,4} In conclusion, the discrepancy of prevalence between adult and pediatric upper GI tract CD is, at least in part, related to the differences in the standards of the diagnostic workup.

There is a conflicting body of literature concerning the prognostic value of UGI involvement in IBD. The previously detailed methodological variability of the UGI IBD diagnosis partially explains why the data regarding the prognostic value is heterogeneous. Earlier literature suggested that the diagnosis of UGI involvement might have an adverse prognostic value;^{12,13} however, recent publications failed to support the association with a worse outcome,² and the clinical significance of the asymptomatic and endoscopically invisible lesions is contested.⁴ Whether upper GI manifestations at the time of the initial diagnosis may predict a complicated disease course has not yet been systematically and prospectively studied.

CROHN'S DISEASE

Esophagus

Clinical Aspects

The prevalence of esophageal CD ranges from 0.2% to 11% in the adult population and from 5% to 17% in pediatric patients.^{14–19} The vast majority of esophageal CD cases are associated with ileocolonic manifestations,²⁰ and only a few cases of isolated esophageal CD have been reported.^{21,22} Patients with histologic evidence of esophageal CD may be asymptomatic or present with symptoms including dysphagia, odynophagia, heartburn, and chest or epigastric pain (Table 1).¹⁹

Endoscopic Features

The nonspecific endoscopic features include mucosal erythema, nodularity, friability, erosions, and aphthoid or punched-out (herpes virus-like) ulcers. In more advanced cases, mucosal cobblestoning, fistulas, wall stiffness, and stenosis may be noted.^{23,24} The mid (29%) and distal (29%) segments are the most common sites of involvement, while proximal and diffuse manifestations are less common (Table 1).¹⁹ Interestingly, Ramaswamy et al¹⁶ were unable to demonstrate a difference between the endoscopic findings of symptomatic and asymptomatic pediatric esophageal CD cases. In CD patients with concomitant eosinophilic or lymphocytic esophagitis, the endoscopic picture is similar to the non-IBD-associated counterparts of the respective diseases with frequent transverse ring formation, also known as trachealization.²⁵

Histologic Features

Histology usually reveals nonspecific focal lymphoplasmacytic inflammation of the lamina propria (83%) that may extend transmurally, with various degrees of active inflammation and erosions/ulcerations (Table 1). The reported frequency of non-necrotizing epithelioid granulomas is rather diverse and varied greatly depending on the type of specimen (ie, biopsy vs. resection) and the workup protocol (ie, number of studied sections). Decker et al¹⁴ reviewed all 20 biopsy cases of esophageal CD diagnosed at Mayo Clinic Rochester between 1976 and 1998 and not a single case showed granulomata. De Matos et al²⁶ evaluated biopsy specimens from esophagogastroduodenoscopies and ileocolonoscopies in a pediatric population and found granulomatous inflammation in the esophageal samples in only 2.7% of cases and identified the esophagus as the least common site for this histologic feature. Ammoury et al²⁷ identified granulomata in 12% of children, suggesting that the frequency of granulomas may be higher in the pediatric population. However, according to a review of the literature by Rudolph and colleagues and the series of D'Haens and colleagues, granulomata may be present in up to 50% of adult cases (Fig. 1A).^{15,28} Nevertheless, to reach the diagnosis of esophageal CD, one should not depend on the recognition of granulomata, but rather interpret the frequently nonspecific histologic changes in the context of clinical history and endoscopic morphology.

Concurrent eosinophilic and lymphocytic esophagitis characterized by increased intraepithelial eosinophilia and lymphocytosis (ie, ≥ 15 eosinophils/high-power field and ≥ 20 lymphocytes/high-power field, respectively) has been described in patients with CD (Fig. 1B).^{25,29–33} Spongiosis resembling contact dermatitis and dyskeratosis are also frequently seen in these cases, while the absence of intraepithelial neutrophils is an important differentiating feature from other forms of esophagitis, including reflux esophagitis. Although an increased association of lymphocytic esophagitis and CD has been reported in pediatric patients,³⁰ series of adult patients reported either a lower positive predictive value of a lymphocytic esophagitis diagnosis for coexisting IBD^{29,34} or failed to demonstrate a significant association between these 2 entities.³⁵ The data regarding the co-occurrence of eosinophilic esophagitis and CD is even more conflicting, with some publications reporting a 5-fold increase in the occurrence of eosinophilic esophagitis among IBD patients,^{32,33} whereas a more recent population-based study demonstrated an inverse relationship.³⁶ Differences regarding the demographics and frequencies of unrecognized diseases (ie, gastroesophageal reflux and *Helicobacter pylori* gastritis) in the control groups are believed to account for these differences and further studies are warranted to better understand the association between lymphocytic/eosinophilic esophagitis and IBD.³⁶

Differential Diagnosis

The exclusion of other ulcerative (eg, gastroesophageal reflux, cytomegalovirus, herpes simplex virus, fungal, drug induced, and radiation esophagitis) and granulomatous (eg, foreign body reaction, immunologic disorders including sarcoidosis and immunodeficiencies, and infections, especially tuberculosis) conditions is an essential role of the microscopic examination. Regarding the lymphocytic and eosinophil esophagitis pattern, further diseases enter the differential diagnosis, including celiac disease and other autoimmune disorders (ie, *Hashimoto thyroiditis*), esophageal manifestations of

TABLE 1. Comparison of the Clinical, Endoscopic, and Histologic Features, and Most Relevant Differential Diagnostic Considerations of UGI Crohn's Disease and Ulcerative Colitis

	Crohn's Disease		Ulcerative Colitis
Clinical symptoms	Esophagus	Prevalence: adult: 0.2%-11%; pediatric: 5%-17% Presentation: asymptomatic or dysphagia, odynophagia, heartburn, chest/epigastric pain	Very rare (not more common than in control population)
	Stomach	Prevalence: symptomatic: 0.5%-4%; histologic: ~50% Presentation: nausea, vomiting, anorexia, postprandial fullness, epigastric pain, bleeding, iron-deficiency anemia, gastric outlet obstruction	Prevalence: symptomatic: 8%; histologic: ~30% Presentation: asymptomatic or associated with severe pancolitis/postcolectomy setting
	Duodenum	Prevalence: symptomatic: 2%-4%; histologic: 28%-48% Presentation: asymptomatic or nausea, vomiting, bleeding, iron-deficiency anemia, delayed gastric emptying ("ram's horn" sign); acute or chronic pancreatitis	Prevalence: adult: 3%-10%; pediatric: up to 30%. Presentation: asymptomatic or associated with severe pancolitis/postcolectomy setting, frequently associated with pouchitis
Endoscopic morphology	Esophagus	Distribution: middle and distal segments > proximal segment and diffuse Features: erythema, nodularity, friability, aphthoid or punched-out erosions/ulcers, cobblestoning, fistulas, wall rigidity, stenosis	Nonspecific
	Stomach	Distribution: antral and pyloric > oxyntic Features: edema, superficial aphthoid or deep linear and serpentine erosions/ulcers, nodularity, bamboo-joint-like lesions (linear fissures and swollen longitudinal folds); wall rigidity, reduced peristalsis, antropyloric stricture, fistulas (usually secondary)	Erythema, mucosal friability, aphthous erosions and rarely bamboo-joint-like lesions
	Duodenum	Distribution: bulbar (often with antropyloric gastritis) > distal duodenal (often with jejunitis) Features: edema, hyperemia, friability, aphthoid, circular, or longitudinal erosions/ulcers, cobblestoning, notched Kerckring's folds, stenosis with reduced distensibility, rosary-like protuberant lesions	Distribution: Pandoedenitis Features: diffuse hyperemia, edema, friability, granularity, multifocal erosions
Histomorphology	Esophagus	Features: nonspecific focal lymphoplasmacytic lamina propria infiltrate; may extend transmurally; various degrees of active inflammation and erosions/ulcerations Granuloma: up to 50% Special presentations: eosinophilic esophagitis: (ie, ≥ 15 eosinophils/HPF) lymphocytic esophagitis: (20 lymphocytes/HPF)	Nonspecific
	Stomach	Active chronic <i>H. pylori</i> -negative gastritis or focally enhanced gastritis: diffusely distributed or focal lamina propria lymphoplasmacytic infiltrate, macrophages/epithelioid cells, various numbers of neutrophils and eosinophils Immunohistochemistry: <i>H. pylori</i> -negative Granuloma: up to 80%	Focally enhanced gastritis, basal mixed inflammation, and active chronic superficial <i>H. pylori</i> -negative gastritis Immunohistochemistry: <i>H. pylori</i> -negative
	Duodenum	Features: focal cryptitis, various degrees of villous blunting and increased IEL, foveolar metaplasia Granuloma: 0%-49%	Diffuse mucosal lymphoplasmacytic infiltration with variable eosinophilic and neutrophilic infiltration in the lamina propria, cryptitis, crypt abscesses, architectural distortion, foveolar metaplasia, increased IEL
Differential diagnosis	Esophagus	Active ulcerative esophagitis: gastroesophageal reflux disease, CMV, HSV, fungal, drug-induced (eg, NSAIDs, iron-pill), radiation esophagitis Granulomatous esophagitis: foreign body reaction, infections (tuberculosis), and other immunologic disorders Lymphocytic and eosinophil esophagitis: autoimmune disorders (eg, celiac disease), lichenoid dermatologic disorders, allergic reactions (drugs and foods), systemic diseases with eosinophilic, motility disorders, neoplasms, diabetes	

TABLE 1. (continued)

	Crohn's Disease	Ulcerative Colitis
Stomach	Active chronic <i>H. pylori</i> -negative gastritis or focally enhanced gastritis; undetected <i>H. pylori</i> organisms, other infections (eg, syphilitic, CMV), iatrogenic (eg, NSAIDs, iron-pill, immune checkpoint inhibitors, and GVHD)	
	Granulomatous gastritis: infections (mycobacterial, syphilitic, fungal, or parasitic), immunologic (sarcoidosis, chronic granulomatous disease, granulomatous vasculitis), foreign body reaction	
Duodenum	Focally active duodenitis: peptic duodenitis in patients with <i>H. pylori</i> gastritis, as well as iatrogenic injury (eg, because of NSAIDs), celiac disease	
	Granulomatous duodenitis: infections, immunologic disorders, and foreign body reaction	

CMV indicates cytomegalovirus; GVHD, graft versus host disease; HPF, high-power field; HSV, herpes simplex virus; IEL, intraepithelial lymphocytes; NSAID, nonsteroidal anti-inflammatory drugs; UGI, upper gastrointestinal.

lichenoid dermatologic disorders, allergic reactions including drugs and foods, systemic diseases with tissue eosinophilia, motility disorders, neoplastic lesions, and diabetes (Table 1).^{37,38} Ancillary techniques including silver and periodic acid–Schiff stains as well as immunostains against herpes viruses, polarized light, and pH monitoring may be used to identify infectious agents to detect birefringent pill fragments, or to verify gastroesophageal reflux, respectively. However, because of the nonspecific nature of the histologic changes and the frequent lack of detailed clinical history, in many cases, a specific diagnosis of esophageal CD cannot be established, and only a diagnosis of “compatible with esophageal CD” can be achieved.

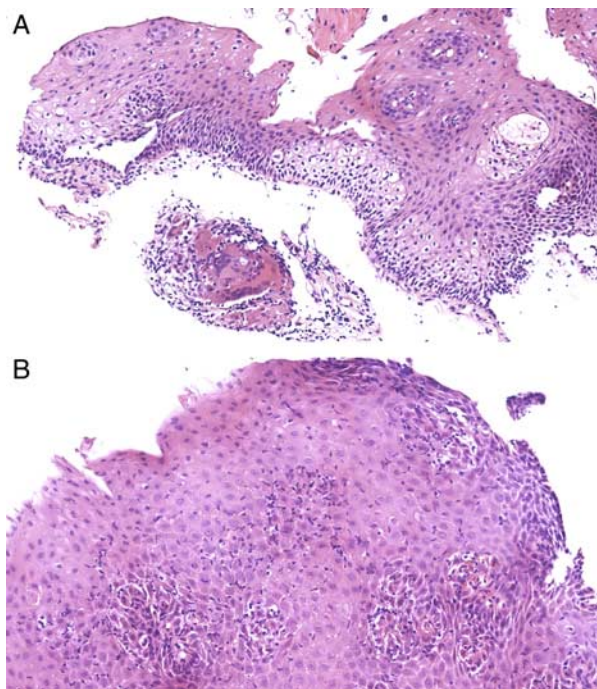


FIGURE 1. Esophageal involvement of Crohn's disease (CD). A, An isolated esophageal epithelioid granuloma in a patient with concurrent ileocolonic CD and focally enhanced gastritis. B, A pediatric CD-associated lymphocytic esophagitis with numerous intraepithelial lymphocytes showing a higher density around papillae.

Stomach

Clinical Aspects

Clinically diagnosed gastric involvement in CD has been reported in 0.5% to 4% of CD patients.^{12,39} However, histologic changes (ie, focal inflammation) can be detected in approximately half of the patients if esophagogastroduodenoscopy with biopsy is automatically performed as part of the initial diagnostic workup, especially in children.^{1,4,40–42} Although gastritis is the most common UGI manifestation of CD, an isolated gastric CD is exceedingly rare,^{39,43} as gastric involvement typically develops in patients with a concurrent duodenal disease (ie, gastroduodenal CD). In the majority of cases, lower GI tract manifestations are also present.^{2,4} Most cases of gastric CD are paucisymptomatic, but some patients may present with nausea, vomiting, anorexia, postprandial fullness, abdominal pain, UGI bleeding, and chronic iron-deficiency anemia. Symptoms of gastric outlet obstruction may develop in cases with advanced antropyloric stenosis (Table 1).³⁹

Endoscopic Features

Endoscopically, the antral and pyloric regions are the most frequently affected, whereas the body and fundus are less likely involved. Mucosal edema, erosions, ulcers (superficial and deep; aphthoid, linear, and serpentine), nodularity, and more specific changes such as the bamboo-joint-like appearance have been described. In contrast to other gross alterations, Bamboo-joint-like lesions are most common on the lesser curvature of the proximal stomach and are formed by linear fissures that traverse the swollen longitudinal folds. Japanese authors reported that these lesions have a specificity of ~95% and sensitivity of 40% for CD.^{44,45} In cases with more prominent transmural involvement, mucosal thickening, wall rigidity with reduced peristalsis, and antral or pyloric stricture may complicate the picture. Gastric perforation and fistulas are rare and usually result from adhesions to inflamed ileocolonic segments (Table 1).⁴⁶ Given the discontinuous distribution of CD, multiple biopsy fragments from both the endoscopically affected and normal-looking areas should be sampled.

Histologic Features

Microscopically, CD usually causes a nonspecific active chronic *H. pylori*-negative gastritis (Fig. 2). *H. pylori*-negative gastritis has been detected in 26% of pediatric CD

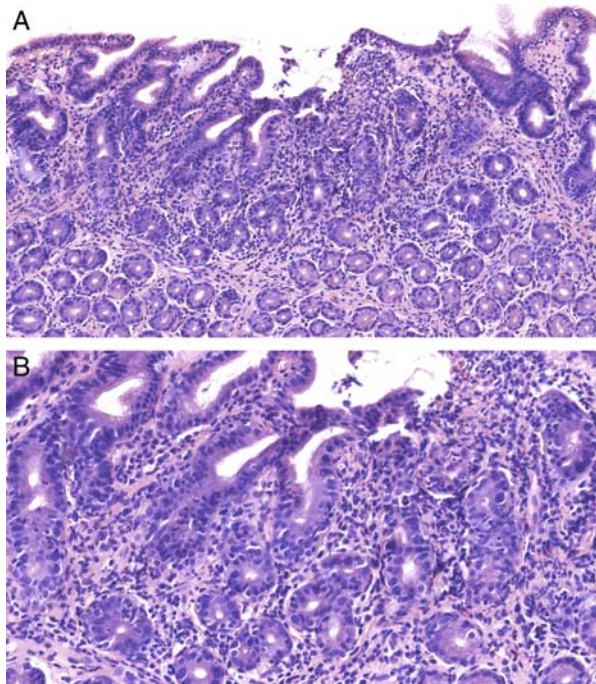


FIGURE 2. *Helicobacter pylori*-negative chronic active gastritis in a patient with Crohn's disease. The inflammatory infiltrate shows a diffuse, nonspecific, relatively superficial distribution (A). Chronic active gastritis always raises the possibility of *H. pylori* gastritis; however, organisms were not detected on HE (B) and anti-*H. pylori* immunohistochemistry (not shown). HE indicates hematoxylin and eosin. Please see this image in color online.

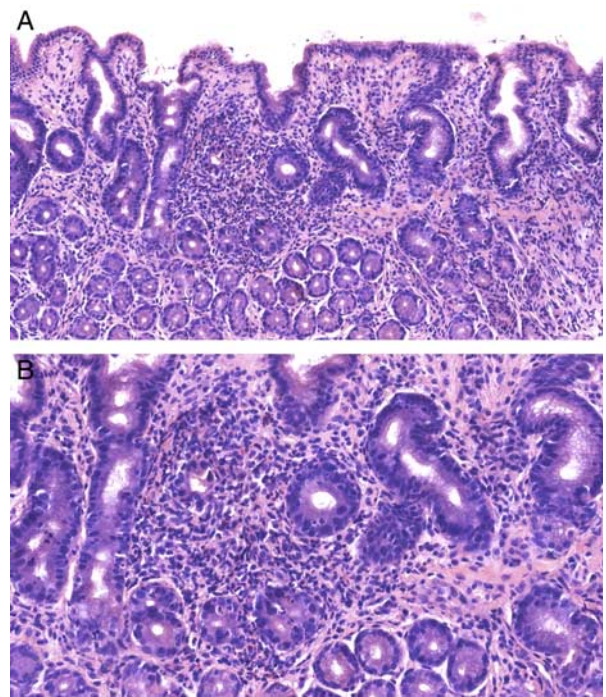


FIGURE 3. Focally enhanced gastritis in Crohn's disease. This special type of gastritis presents with a relatively well-circumscribed inflammatory focus, surrounded by unremarkable mucosa (A). The infiltrate consists of lymphocytes, macrophages, neutrophils, and scattered eosinophils (B). Please see this image in color online.

patients, compared with just 2% in controls.⁴⁷ Rare, particularly pediatric cases can present with an increased intraepithelial lymphocytosis (IEL) and lymphocytic gastritis-like picture.⁴⁸ Focally enhanced gastritis (FEG), also known as focally active gastritis, is a special form of gastritis with a focal distribution (Fig. 3, Table 1). FEG has been identified in 43% to 55% of CD patients.^{40,49,50} The infiltrate primarily consists of lymphocytes and macrophages (sometimes with epithelioid morphology), admixed with various numbers of neutrophils and eosinophils. Although immunohistochemistry is not routinely applied for the study of inflammatory cell types, characteristic perifoveolar or periglandular accumulation of macrophages and T cells can be highlighted by CD68 and CD3 antibodies, respectively.⁵¹ Granulomata tend to be poorly formed and small, but expansive granulomata with giant cells may also be encountered. Yao et al⁵² demonstrated that microaggregates of macrophages and epithelioid cells are typical for CD and are not present in patients with UC. Furthermore, such microaggregates (54.5%) were more frequent than granulomas (18.2%) in this series. However, Magalhães-Costa et al⁵³ reported that microaggregates of macrophages may also be found in patients with UC and in non-IBD controls, and their presence was almost exclusively associated with *H. pylori* infection. In addition, lymphoid aggregates, fibrosis, and epithelioid granulomas may also occur. Similar to esophageal involvement, the detection rate of granulomas shows a significant variability (0% to 80%) in the literature and depends on the type of specimen (resection vs. biopsy⁵⁴), methodology of sampling (eg, number of biopsy fragments) and tissue processing (eg, number of histologic

sections, use of serial sectioning, or deeper levels).³⁹ Regarding sampling, both grossly affected and unremarkable areas may contain granulomas. However, the frequency of granulomas correlates with the site and endoscopic type of lesion the biopsy targeted. Antral samples are more likely to contain granulomas than those from the body.⁵⁵ According to publications largely based on Japanese population, targeting the bamboo-joint-like lesions may offer a relatively high yield of granuloma detection (14.3% to 45.5%),²³ although other authors demonstrated contradicting results.⁴⁵

Differential Diagnosis

Regarding endoscopic wall rigidity in advanced cases, gastric syphilis, rheumatologic diseases, amyloidosis, as well as diffuse gastric cancer, and lymphomas may be considered. In addition to IBD-related cases, *H. pylori*-negative chronic active gastritis may represent a *H. pylori* gastritis in which the organisms remain undetected because of the masking effect of antibiotic and proton pump inhibitor therapy, inadequate sampling, or suboptimal staining. Consequently, immunohistochemistry is recommended to exclude the presence of rare *H. pylori* bacteria undetectable on hematoxylin and eosin stains.⁵⁶ We should also keep in mind that gastric CD may also coexist with *H. pylori* gastritis.⁵⁷ Alternatively, *H. pylori*-negative chronic active gastritis may be caused by etiologic factors unrelated to *H. pylori* organisms, including other infections (eg, syphilitic, fungal, and cytomegalovirus gastritis) and iatrogenic causes (eg, nonsteroidal anti-inflammatory drugs, immune checkpoint inhibitors, and graft vs. host disease).^{58,59} Similarly, while the FEG pattern has been

described in a high percentage of CD patients, it may develop in a myriad of other conditions (Table 1). In adults, the positive predictive value of FEG for IBD is only ~5%.⁵⁸ Conversely, in the pediatric setting, the positive predictive value of FEG is ~75%.⁴⁹ Although these pediatric cases are significantly more likely to be CD (55%), UC can also induce similar changes (30%).⁴⁰ Therefore, when FEG is seen in the absence of *H. pylori* infection, the pathology report may include a comment about the possibility of IBD, especially when the presence of macrophage microaggregates or epithelioid cells has been noted and in the pediatric setting.⁵³

More than 50% of North American granulomatous gastritis cases are related to CD.⁶⁰ Among the other diseases that can present with gastric granulomata are mycobacterial, syphilitic, or fungal infections, parasites, sarcoidosis, chronic granulomatous disease, granulomatous vasculitis, and foreign body reaction.^{61–64} Gastrointestinal tuberculosis typically affects the ileocecal region, while gastric involvement is only reported in ~6% of cases.⁶⁵ Similarly to CD, the prepyloric and antral regions are the most frequently affected.⁶⁶ However, the endoscopic presentation is typically different, with most cases of gastric tuberculosis exhibiting a large, non-healing ulcer or a submucosal mass. Unfortunately, the epithelioid granulomata do not always harbor the distinguishing histologic feature of caseous necrosis.^{67,68} Given its superior sensitivity, if available, polymerase chain reaction analysis should be preferred over the labor-intensive but frequently unrewarding examination of acid-fast stains.⁶⁹

Duodenum

Clinical Aspects

Duodenal manifestation of CD is uncommon, with ~2% to 4% of all adult CD patients diagnosed clinically with such a complication, while jejunal manifestations develop in 4% to 10% of patients.^{22,70} However, studies of pediatric patients that also included asymptomatic cases with endoscopically unremarkable duodenum have reported a high frequency (28% to 48%) of microscopic alterations with questionable clinical implications.^{41,47,71–73} Isolated involvement of the duodenum is unusual in CD, and typically, duodenal manifestations are part of a more extensive gastroduodenal or duodenojejunal CD.^{74,75} Most frequently (32%), the bulbar (proximal) duodenum is affected together with the antral and pyloric regions of the stomach. A smaller number of patients (18%) present with distal duodenal involvement that tends to be accompanied by jejunitis.^{13,76} A retrospective study of Nugent and colleagues reported that almost one-third of patients with duodenal CD had an already established history of IBD, while in more than half of the patients, the stomach manifestation was diagnosed synchronously with lower GI tract disease. Isolated (at the time of diagnosis) gastroduodenal disease was only identified in 17% of patients. Altogether ~90% of patients developed lower GI tract involvement during the study period.⁷⁶ The clinical symptoms show considerable overlap with gastric CD. The rare complication of bulbar stenosis may lead to delayed gastric emptying and the so-called “ram’s horn” sign,⁷⁷ while duodenopancreatic fistula and the fibrotic stenosis of the ampulla can cause refractory abdominal pain and acute or chronic pancreatitis (Table 1).⁷⁵

Endoscopic Features

Duodenoscopy may reveal focal mucosal edema, hyperemia, and friability, as well as aphthoid, circular, or longitudinal erosions and ulcers. Mucosal cobblestoning

and notched appearance of the duodenal Kerckring’s folds are more distinctive of CD. The diagnostic specificity of the notched sign is 94%; however, the sensitivity is only 10% (vs. 1.5% in UC).⁴⁵ In cases with transmural disease and fibrosis, there may also be signs of duodenal stenosis with reduced distensibility, rigidity, and luminal narrowing. Another relatively specific endoscopic feature is the presence of longitudinally arranged protruding lesions designated as “rosary-like protuberant lesions” (Table 1).³⁹

Histologic Features

Similar to other segments of the upper GI tract, the histologic findings of duodenal CD are frequently nonspecific. Most cases show focal crypt inflammation with various degrees of villous blunting and increased IEL.^{4,78} Many cases with increased IEL show a retained villous architecture (Table 1). Although more than 15% of duodenal CD cases have been reported to show increased IEL,⁷² according to Patterson and colleagues, only 5% of patients with increased IEL have CD. In contrast to the decrescendo pattern of celiac disease, the intraepithelial T cells are usually evenly distributed from the top of the villi to the base of the crypts.⁷⁹ In many cases, foveolar metaplasia is also detected.⁸⁰ Foveolar metaplasia has long been documented in various forms of duodenitis, including peptic injury, while pseudopyloric metaplasia is used as a sign of chronic ileitis. However, recently it was recognized that foveolar metaplasia is not specific to the UGI tract, and both forms of gastric metaplasia may develop in ileal Crohn’s disease.⁸¹ Epithelioid granulomas are present in approximately one-third of the cases (range: 0% to 49%)^{4,23}

Differential Diagnosis

The differential diagnosis of duodenal CD includes other causes of active duodenitis, aphthous erosions, increased IEL, and villous blunting. Peptic duodenitis in patients with *H. pylori* gastritis, as well as iatrogenic injury [eg, because of nonsteroidal anti-inflammatory drugs (NSAIDs)], can also induce active duodenitis with limited villous blunting, foveolar metaplasia, and increased IEL (Table 1). Hardee and colleagues compared the histologic alterations of duodenal involvement in pediatric IBD to various other etiologic types of duodenitis and aimed to identify the microscopic features that are characteristic of duodenal CD. Excluding granulomas (that have a low sensitivity), focal active duodenitis with cryptitis was the most distinctive feature of IBD, whereas significant IELs, especially with severe villous blunting was significantly more common in celiac disease.⁷¹ Patients with CD may have positive tissue transglutaminase and deaminated gliadin peptide serology tests. This false-positive result, in combination with increased IELs, may be a possible diagnostic pitfall. However, these patients do not show susceptible HLA haplotypes.⁸² Similar to other UGI segments, the presence of granulomatous inflammation has its own differential diagnostic considerations. The typical CD-related granulomata are small and poorly formed, whereas large necrotizing granulomata are more characteristic for infectious etiologies, including GI tuberculosis.⁶⁶

ULCERATIVE COLITIS

Overview

Historically, UGI involvement in IBD was synonymous with CD, and even to date, its presence is frequently

interpreted to favor the diagnosis of CD in patients with indeterminate colitis.⁷⁰ However, the classic doctrine of CD being able to affect any part of the gastrointestinal tract whereas UC being restricted to the colon has been challenged by an increasing body of literature reporting on gastroduodenal lesions in adult patients with UC.^{40,83} Nevertheless, our knowledge regarding the UGI manifestations of UC is still limited compared with CD (Table 1).

Esophagus

Most of our knowledge regarding esophageal manifestations of UC is based on studies of pediatric patients,^{18,41,72,84} but case reports of adult patients were also published.^{85,86} Unfortunately, these data are hard to interpret, given the nonspecific morphology of esophageal UC, the absence of granulomatous inflammation as a possible confirmatory tool, and the methodological issues concerning how other inflammatory disorders were excluded. Some publications reported that esophagitis is not more common in patients with UC compared with controls in adult populations.⁸⁷

Stomach

Gastritis is the most common manifestation of UGI UC, with endoscopic lesions detected in up to 8% and histologic changes in approximately a third of the patients.^{40,88} Most patients with gastric manifestations of UC are asymptomatic, while most symptomatic cases are associated with severe pancolitis or develop in a postcolectomy setting (see also in the section regarding Ileal Pouch-Anal Anastomosis-related diseases).⁸⁸⁻⁹¹

Endoscopically, the majority of UC-associated gastritis is characterized by nonspecific erythema and mucosal friability. Aphthous erosions and bamboo-joint-like structures are commonly regarded as specific features of gastric CD; however, these lesions can also be encountered in ~5% to 10% of UC cases.^{91,92}

According to Lin et al,⁸⁷ there are 3 distinct patterns of gastritis that occur more frequently in UC patients than in controls, including FEG (UC: 29%; controls 9%), basal mixed inflammation (UC: 22%; controls 8%), and chronic superficial *H. pylori*-negative gastritis (UC: 20%; controls: 6%). Although the frequency of FEG in UC patients is estimated to be somewhat lower (~20% to 30%) than that of CD patients (~50%), the presence of FEG cannot be used to distinguish CD from UC.^{40,42,87} Ushiku and colleagues reported a series of 57 pediatric UC cases with upper and lower gastrointestinal biopsies, with 30% of the patients showing evidence of FEG compared with the 55% of the CD group and only 5% of controls. The total number of glands involved in each FEG focus was higher in UC than in CD cases.⁴⁰ There was no correlation between FEG and other gastrointestinal findings of UC.

As all 3 patterns of UC-related gastritis are nonspecific, its diagnosis should always include correlation to the clinical and endoscopic presentation as well as the exclusion of alternative etiological factors. Similar to CD, the association of FEG with previously, concurrently, or subsequently diagnosed classic lower GI tract disease is more common in the pediatric population compared with adults.^{40,42,58} In a case showing a FEG pattern, the clinical history is helpful to exclude iatrogenic causes such as graft versus host disease or immune checkpoint inhibitor therapy.^{58,59} The possibility of *H. pylori* gastritis should always be entertained, and exclusion by immunohistochemistry is recommended.⁵⁶ Compared with gastric CD, the presence of granuloma is exceedingly rare.⁸⁷

Duodenum

The reported frequency of histologically detectable duodenitis is 3% to 10% in adult UC patients,^{73,87,88,91} but a higher prevalence (up to 29%) has been documented in the pediatric population.^{18,41,72} Similar to UC-related gastritis, the vast majority of patients with clinically detected UC-associated duodenitis have been previously diagnosed with severe colonic UC, usually with a pancolitis phenotype that required colectomy.⁸⁷⁻⁹¹ Furthermore, diffuse chronic duodenitis in UC patients who have colectomy is suggested to be a strong predictor of pouchitis.⁸⁷

Endoscopy usually reveals mucosal hyperemia, edema, friability, granularity, and multifocal erosions with a predominantly diffuse pattern.^{88,91,93} Although considered a feature indicative of CD, luminal narrowing has also been reported in rare cases of UC-related duodenitis.⁹⁴

Histologically, UC-related duodenitis is characterized by diffuse mucosal lymphoplasmacytic infiltration with increased eosinophilic and variable neutrophilic infiltration in the lamina propria, cryptitis, crypt abscesses, and architectural distortion (Fig. 4).^{87,91} Foveolar metaplasia may also develop, albeit less frequently compared with duodenal CD.⁸⁰ On the basis of the series of Lin et al,⁸⁷ diffuse chronic duodenitis is the only unique UGI inflammatory pattern that occurred only in UC patients and not in controls. Increased IEL may also be detected, especially in pediatric patients, and it is significantly more common in UC-associated duodenitis compared with CD-related cases.⁷²

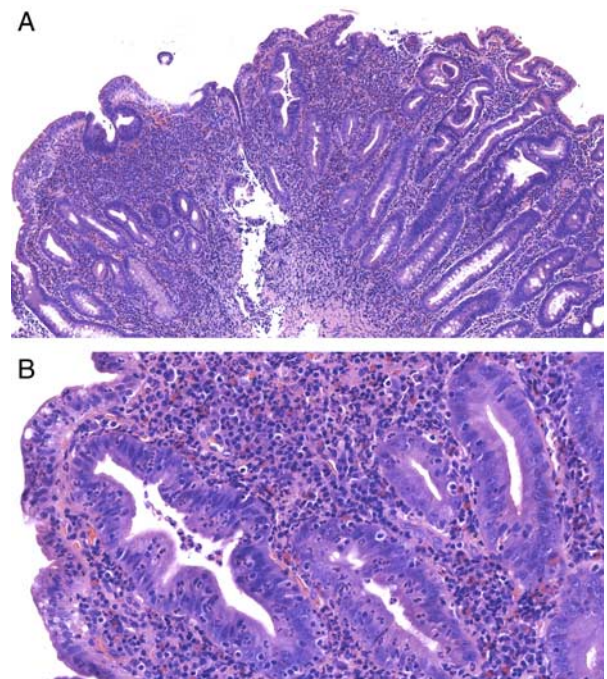


FIGURE 4. Diffuse active chronic duodenitis in a patient with ulcerative colitis. In contrast to the usually focal cryptitis associated with Crohn's disease, the inflammatory infiltrate shows a diffuse distribution (A). Similar to colonic ulcerative colitis, crypt architectural distortion with various degrees of active inflammation, including cryptitis and crypt abscesses, are mainstay histologic features of the duodenal manifestation. Usually, numerous eosinophil granulocytes can also be noted (B). Please see this image in color online.

The diagnosis of duodenal UC should be primarily entertained in patients with a history of severe pancolitis, colectomy, and recurrent pouchitis. Otherwise, the diagnosis of UC-related duodenitis might prove extremely difficult because of the nonspecific nature of the morphological changes.

Inflammatory Bowel Disease in Patients With Ileal Pouch-Anal Anastomosis

Overview

IPAA surgery creates a unique anatomic situation that subsequently modifies many physiological processes of the gastrointestinal tract. IPAA procedure is an effective treatment for a variety of diseases, including inflammatory colitides and cancer predisposition syndromes (eg, familial adenomatous polyposis). UC is the most common indication (88%) for IPAA surgery^{95,96} and is mainly performed in 5 settings: (1) severe acute colitis unresponsive to medical treatment; (2) chronic disease refractory to medical therapy; (3) patients who fail to tolerate medical treatment; (4) dysplastic or carcinomatous transformation; and (5) in pediatric cases with failure to thrive.^{97,98} Although CD only accounts for a minority (1%) of IPAA procedures, the rate of pouch failure (10%) is not significantly different from that in UC^{99,100} and IPAA is increasingly used in the setting of CD, indeterminate colitis, and IBD-U.¹⁰⁰⁻¹⁰² Nevertheless, in patients with CD undergoing intentional IPAA, the risk of developing recurrent CD of the pouch is high (41% to 64%), and long-term medical therapy and future surgical interventions are frequently needed.^{99,100} Therefore, IPAA can only be offered for carefully selected CD patients without terminal ileal and perianal involvement, who are motivated to maintain intestinal continuity and can accept the risk of increased pouch-associated morbidity.¹⁰²

Patients who underwent IPAA surgery can develop a range of distinctive inflammatory complications that can be classified according to the bowel segment that the process involves. Inflammation involving the ileum proximal to the pouch is labeled as prepouch ileitis. Pouchitis affects the small intestine-derived part of the pouch, while the involvement of the remnant rectal mucosa is designated as cuffitis (Fig. 5).

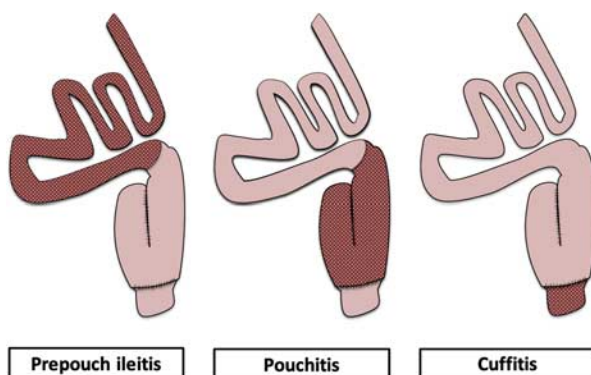


FIGURE 5. Different patterns of ileal pouch-anal anastomosis-associated inflammation according to its topographic distribution. Inflammation of the ileum proximal to the pouch is designated as prepouch ileitis, while pouchitis and cuffitis involve the small intestine and rectum-derived parts of the reservoir, respectively. Please see this image in color online.

Pouchitis

Pouchitis can be clinically categorized as antibiotic-responsive, antibiotic-dependent, and antibiotic-refractory. The incidence of pouchitis is significantly higher in patients who undergo IPAA surgery for UC than that of patients with familial adenomatous polyposis. The estimated incidence of at least one pouchitis episode in post-IPAA UC patients is ~50%,¹⁰³ while up to ~5% to 10% of these patients develop pouch failure and require pouch excision.^{104,105} The etiology of pouchitis is enigmatic, with likely a combination of genetic factors, alterations in host immunologic function, and microbiota contributing to the pathogenesis.¹⁰⁶ The significantly higher rate of pouchitis in UC patients suggests that relapsing cases of pouchitis might represent the recurrence of UC in the pouch mucosa. Because of the frequent loss of specific small bowel histologic features, including villous atrophy and crypt hyperplasia, a theory of mucosal adaptation-related colonic transformation (ie, colonic metaplasia) was proposed.¹⁰⁷ Histochemical studies, including high iron diamine-alcian blue stain of pouch mucosal mucin, demonstrated a change from small intestinal mucin to colonic mucin.¹⁰⁸ This phenomenon suggests that a possible explanation regarding the pathogenesis of pouchitis is that it enables the recurrence of UC in the small intestinal mucosa because of its shift toward a colonic phenotype. In contrast, many cases of pouchitis respond to antibiotic treatment, which raises the possibility of an infectious etiology, at least in some cases.^{109,110} The manifestation of other specific diseases (eg, CD of the pouch, prolapse changes, and ischemic or drug-induced enteritis) in the pouch mucosa are not considered pouchitis.

Villous architecture abnormalities and increased lymphoplasmacytic inflammation are considered mainstay features of mucosal adaptation in the ileal pouch, and such changes should not be regarded as evidence for pouchitis. Pouchitis usually presents histologically as a chronic active inflammation with cryptitis, crypt abscesses, erosion, ulceration, crypt distortion, and basal plasmacytosis (Fig. 6A).¹¹⁰ Occasionally, transmural inflammation, fissures, fistulas, strictures, and even granulomatous inflammation can occur in the pouch of patients with UC. Granulomatous transformation of lymphoid follicles and Peyer's patches is a particularly common phenomenon (Fig. 6B). These histologic changes could raise the possibility of CD involving the pouch mucosa. In such cases, the histologic picture must be correlated to the previous biopsies and resection specimens in order to differentiate pouchitis with transmural inflammation or granulomata from CD. The reclassification of the IBD as CD is not recommended unless pathognomonic features of CD can be identified by reevaluating the prior colectomy and preoperative biopsy specimens. Granulomata in a patient without any evidence of CD may be related to diversion colitis in cases with a multistage pouch procedure, infectious agents, foreign material, or mucin extravasation.¹¹¹ Pseudopyloric metaplasia is another characteristic feature of CD that can also develop in the setting of pouchitis, and therefore it cannot be used as a distinctive feature.¹¹²

Prepouch Ileitis

Prepouch ileitis is defined as histologically confirmed inflammation of the afferent limb of the pouch that can extend proximally to affect the UGI tract.¹¹³⁻¹¹⁵ Extensive cases have also been referred to as postcolectomy panenteritis, but the disease can sometimes also involve the duodenal and even the

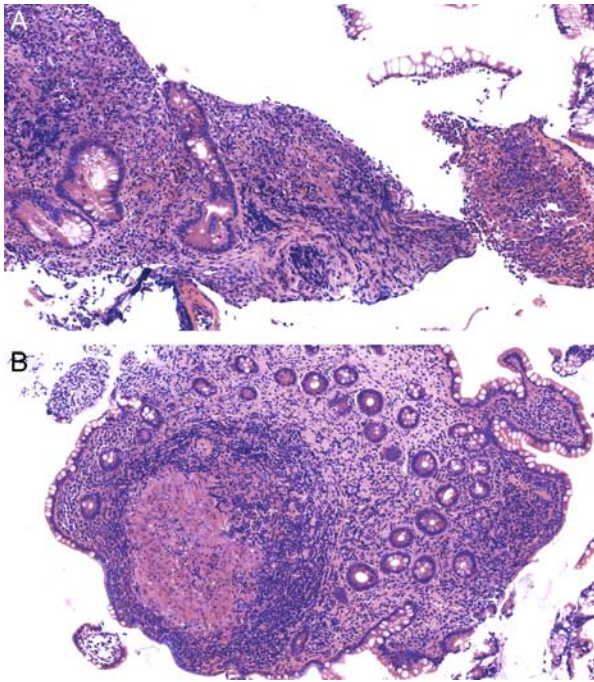


FIGURE 6. Refractory chronic active pouchitis with epithelioid granuloma. This ulcerative colitis patient developed a severely active pouchitis with ulceration (A). Epithelioid granulomas developing in lymphoid aggregates are not uncommon in pouchitis and should not be interpreted as evidence of Crohn's disease (CD) of the pouch (B). A change of diagnosis from ulcerative colitis to CD should only be made if reevaluation of the colectomy and preoperative biopsy specimens show typical CD features. Please see this image in color online.

gastric mucosa. Altogether, prepouch inflammation could be considered to represent an UGI manifestation of UC or, alternatively, physiological changes associated with colectomy.⁸⁸⁻⁹¹ However, the etiology and pathogenesis of prepouch ileitis are still uncertain, and a universally accepted definition is still lacking. The most common clinical symptoms include increased frequency and bleeding. According to recent data, including a multicenter study, the incidence of prepouch ileitis is about 4% to 6% of all patients who underwent IPAA surgery.^{115,116} Practically all patients with prepouch ileitis have simultaneous pouchitis, suggesting a likely related etiology. However, prepouch ileitis is more frequently refractory to antibiotic therapy compared with pouchitis; thus, immunomodulatory therapy is more often required.¹¹⁶

Drugs (eg, NSAIDs) and recurrent misdiagnosed CD may also cause afferent limb inflammation in a subset of patients.¹¹⁷ Nevertheless, after excluding the use of NSAIDs, the diagnosis of UC can be confirmed, and the possibility of preoperatively misdiagnosed CD can be excluded by thorough expert pathologic and radiologic review in the majority of prepouch ileitis cases.¹¹³ Rottoli and colleagues demonstrated that patients with CD were more likely (75%) to present with afferent limb stenosis (and outlet obstruction) than those with UC (42.2%). CD patients have been reported to have a significantly higher rate of requiring surgery.¹¹⁵

Cuffitis

The clinical symptoms of cuffitis are similar to that of ulcerative proctitis.¹¹⁸ A cuff length ≥ 20 mm is a risk factor of

cuffitis.¹¹⁹ Inflammation of the surgical cuff represents an etiologically heterogeneous group of diseases with therapy responsive and refractory cases. Inflammation of the remnant rectal mucosa not removed at the time of colectomy (ie, cuffitis) may develop concordantly to pouchitis or in isolation.

In cases of isolated cuffitis, recurrent UC should be first considered. Cuffitis usually presents histologically with chronic active inflammation, cryptitis, crypt abscesses, crypt distortion, and basal plasmacytosis. Because of the frequent colonic transformation in pouchitis as well as the irregular surface with villiform change and Paneth cell metaplasia in the cuffitis, the distinction of the cuff and pouch mucosa can become difficult. Therefore, the cuff and pouch mucosa are recommended to be sampled and submitted for pathology examination in separate, labeled containers. Albeit less frequent, Crohn's disease of the cuff mucosa, infectious conditions,¹²⁰ and any miscellaneous form of colitis may develop in the cuff mucosa.¹²¹

Primary Sclerosing Cholangitis in Patients With Inflammatory Bowel Disease

Primary sclerosing cholangitis (PSC) is a chronic, progressive cholestatic liver disease affecting the intrahepatic and extrahepatic bile ducts, potentially leading to cirrhosis and liver failure that is associated with IBD in ~60% to 70% of cases.¹²² Usually, the IBD diagnosis precedes that of PSC, although the high rate of asymptomatic patients in both colonic and liver disease may bias data regarding the temporal relationship of the 2 disease components.^{123,124} A recent large meta-analysis of more than 13,000 patients demonstrated a 3-fold increased risk of colorectal neoplasia and cancer among patients with PSC-IBD compared with IBD patients without liver disease.¹²⁵ According to the most widely accepted theory, the increased neoplastic risk is related to cholestasis, which favors an altered intestinal bile acid metabolism, and increased production of carcinogenic secondary bile acids by microbiota.¹²⁶ The higher rate of asymptomatic and therefore undiagnosed and untreated cases may also contribute to the increased neoplastic risk.

PSC-related IBD (PSC-IBD) is reported to show a usually UC-like but distinct IBD phenotype with an increased incidence of pancolitis (Fig. 7).¹²⁷ An association with backwash ileitis and rectal sparing is also frequently but less consistently reported.¹²⁴ Despite the higher frequency of

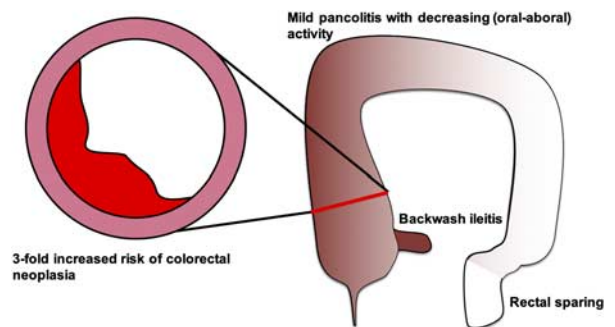


FIGURE 7. The specific phenotype of inflammatory bowel disease (IBD) in patients with primary sclerosing cholangitis (PSC-IBD). PSC-IBD presents more frequently as pancolitis, while the activity is usually not severe and shows a decreasing intensity aborally. Backwash ileitis and relative rectal sparing are also often reported. PSC-IBD patients have a 3-fold increased risk of developing colorectal neoplasm. Please see this image in color online.

pancolitis, the activity of colitis is usually milder and commonly only histologically detectable, with a higher rate of normal endoscopic picture.¹²⁴ Nevertheless, the incidence of pouchitis in patients undergoing IPAA is higher in PSC-IBD compared with classic IBD patients. According to multiple series, the disease activity is typically the highest in the right colon and lowest toward the distal colon.^{124,128,129} Recently, various nonconventional IBD-associated dysplasia types were increasingly recognized, and a frequent association with hypermucinous, crypt cell, and goblet cell deficient dysplasia types has been reported (for more detail, see another review of this special issue: The Significance of Nonconventional Dysplastic Subtypes in Inflammatory Bowel Disease).

ACKNOWLEDGMENTS

University of Szeged Open Access Fund, Grant No. 5337.

REFERENCES

- Diaz L, Hernandez-Oquet RE, Deshpande AR, et al. Upper gastrointestinal involvement in crohn disease: histopathologic and endoscopic findings. *South Med J*. 2015;108:695–700.
- Greuter T, Piller A, Fournier N, et al. Upper gastrointestinal tract involvement in Crohn's disease: frequency, risk factors, and disease course. *J Crohns Colitis*. 2018;12:1399–1409.
- Satsangi J, Silverberg MS, Vermeire S, et al. The Montreal classification of inflammatory bowel disease: controversies, consensus, and implications. *Gut*. 2006;55:749–753.
- Horjus Talabur Horje CS, Meijer J, Rovers L, et al. Prevalence of upper gastrointestinal lesions at primary diagnosis in adults with inflammatory bowel disease. *Inflamm Bowel Dis*. 2016;22:1896–1901.
- Ueno F, Matsui T, Matsumoto T, et al. Evidence-based clinical practice guidelines for Crohn's disease, integrated with formal consensus of experts in Japan. *J Gastroenterol*. 2013;48:31–72.
- Gomollón F, Dignass A, Annese V, et al. 3rd European evidence-based consensus on the diagnosis and management of Crohn's disease 2016: Part 1: diagnosis and medical management. *J Crohns Colitis*. 2017;11:3–25.
- American Society for Gastrointestinal Endoscopy Standards of Practice Committee, Shergill AK, Lightdale JR, et al. The role of endoscopy in inflammatory bowel disease. *Gastrointest Endosc*. 2015;81:1101–21.e213.
- Maaser C, Sturm A, Vavricka SR, et al. ECCO-ESGAR guideline for diagnostic assessment in IBD Part I: initial diagnosis, monitoring of known IBD, detection of complications. *J Crohns Colitis*. 2019;13:144–164.
- Matsuoka K, Kobayashi T, Ueno F, et al. Evidence-based clinical practice guidelines for inflammatory bowel disease. *J Gastroenterol*. 2018;53:305–353.
- Levine A, Koletzko S, Turner D, et al. European Society of Pediatric Gastroenterology, Hepatology, and Nutrition. ESPGHAN revised porto criteria for the diagnosis of inflammatory bowel disease in children and adolescents. *J Pediatr Gastroenterol Nutr*. 2014;58:795–806.
- Abuquteish D, Putra J. Upper gastrointestinal tract involvement of pediatric inflammatory bowel disease: a pathological review. *World J Gastroenterol*. 2019;25:1928–1935.
- Schwartzberg DM, Brandstetter S, Grucela AL. Crohn's disease of the esophagus, duodenum, and stomach. *Clin Colon Rectal Surg*. 2019;32:231–242.
- Sakuraba A, Iwao Y, Matsuoka K, et al. Endoscopic and pathologic changes of the upper gastrointestinal tract in Crohn's disease. *Biomed Res Int*. 2014;2014:610767.
- Decker GA, Loftus EV Jr, Pasha TM, et al. Crohn's disease of the esophagus: clinical features and outcomes. *Inflamm Bowel Dis*. 2001;7:113–119.
- D'Haens G, Rutgeerts P, Geboes K, et al. The natural history of esophageal Crohn's disease: three patterns of evolution. *Gastrointest Endosc*. 1994;40:296–300.
- Ramaswamy K, Jacobson K, Jevon G, et al. Esophageal Crohn disease in children: a clinical spectrum. *J Pediatr Gastroenterol Nutr*. 2003;36:454–458.
- Alcántara M, Rodríguez R, Potenciano JL, et al. Endoscopic and bioptic findings in the upper gastrointestinal tract in patients with Crohn's disease. *Endoscopy*. 1993;25:282–286.
- Ruuska T, Vaajalahti P, Arajärvi P, et al. Prospective evaluation of upper gastrointestinal mucosal lesions in children with ulcerative colitis and Crohn's disease. *J Pediatr Gastroenterol Nutr*. 1994;19:181–186.
- De Felice KM, Katzka DA, Raffals LE. Crohn's disease of the esophagus: clinical features and treatment outcomes in the biologic era. *Inflamm Bowel Dis*. 2015;21:2106–2113.
- Witte AM, Veenendaal RA, Van Hogezaand RA, et al. Crohn's disease of the upper gastrointestinal tract: the value of endoscopic examination. *Scand J Gastroenterol Suppl*. 1998;225:100–105.
- Naranjo-Rodríguez A, Solórzano-Peck G, López-Rubio F, et al. Isolated oesophageal involvement of Crohn's disease. *Eur J Gastroenterol Hepatol*. 2003;15:1123–1126.
- Wagtman MJ, van Hogezaand RA, Griffioen G, et al. Crohn's disease of the upper gastrointestinal tract. *Neth J Med*. 1997;50:S2–S7.
- Nomura Y, Moriichi K, Fujiya M, et al. The endoscopic findings of the upper gastrointestinal tract in patients with Crohn's disease. *Clin J Gastroenterol*. 2017;10:289–296.
- Loreto-Brand M, Fernández-Pérez A, Celeiro-Muñoz C, et al. Crohn's disease: upper gastrointestinal involvement. *Rev Gastroenterol Mex*. 2015;80:282–285.
- Mintz MJ, Ananthakrishnan AN. Phenotype and natural history of inflammatory bowel disease in patients with concomitant eosinophilic esophagitis. *Inflamm Bowel Dis*. 2021;27:469–475.
- De Matos V, Russo PA, Cohen AB, et al. Frequency and clinical correlations of granulomas in children with Crohn disease. *J Pediatr Gastroenterol Nutr*. 2008;46:392–398.
- Ammoury RF, Pfefferkorn MD. Significance of esophageal Crohn disease in children. *J Pediatr Gastroenterol Nutr*. 2011;52:291–294.
- Rudolph I, Goldstein F, DiMarino AJ Jr. Crohn's disease of the esophagus: three cases and a literature review. *Can J Gastroenterol*. 2001;15:117–122.
- Basserri B, Vasiliauskas EA, Chan O, et al. Evaluation of peripapillary lymphocytosis and lymphocytic esophagitis in adult inflammatory bowel disease. *Gastroenterol Hepatol (N Y)*. 2013;9:505–511.
- Ebach DR, Vanderheyden AD, Ellison JM, et al. Lymphocytic esophagitis: a possible manifestation of pediatric upper gastrointestinal Crohn's disease. *Inflamm Bowel Dis*. 2011;17:45–49.
- Moore H, Wechsler J, Frost C, et al. Comorbid diagnosis of eosinophilic esophagitis and inflammatory bowel disease in the pediatric population. *J Pediatr Gastroenterol Nutr*. 2021;72:398–403.
- Fan YC, Steele D, Kochar B, et al. Increased prevalence of esophageal eosinophilia in patients with inflammatory bowel disease. *Inflamm Intest Dis*. 2019;3:180–186.
- Limketkai BN, Shah SC, Hirano I, et al. Epidemiology and implications of concurrent diagnosis of eosinophilic oesophagitis and IBD based on a prospective population-based analysis. *Gut*. 2019;68:2152–2160.
- Pittman ME, Hissong E, Katz PO, et al. Lymphocyte-predominant esophagitis: a distinct and likely immune-mediated disorder encompassing lymphocytic and Lichenoid esophagitis. *Am J Surg Pathol*. 2020;44:198–205.
- Purdy JK, Appelman HD, Golembeski CP, et al. Lymphocytic esophagitis: a chronic or recurring pattern of esophagitis resembling allergic contact dermatitis. *Am J Clin Pathol*. 2008;130:508–513.

36. Sonnenberg A, Turner KO, Genta RM. Comorbid occurrence of eosinophilic esophagitis and inflammatory bowel disease. *Clin Gastroenterol Hepatol*. 2021;19:613–615.e1.
37. Gómez-Aldana A, Jaramillo-Santos M, Delgado A, et al. Eosinophilic esophagitis: current concepts in diagnosis and treatment. *World J Gastroenterol*. 2019;25:4598–4613.
38. Roupheal C, Gordon IO, Thota PN. Lymphocytic esophagitis: still an enigma a decade later. *World J Gastroenterol*. 2017;23:949–956.
39. Pimentel AM, Rocha R, Santana GO. Crohn's disease of esophagus, stomach and duodenum. *World J Gastrointest Pharmacol Ther*. 2019;10:35–49.
40. Ushiku T, Moran CJ, Lauwers GY. Focally enhanced gastritis in newly diagnosed pediatric inflammatory bowel disease. *Am J Surg Pathol*. 2013;37:1882–1888.
41. Kovacs M, Muller KE, Arato A, et al. Diagnostic yield of upper endoscopy in paediatric patients with Crohn's disease and ulcerative colitis. Subanalysis of the HUPIR registry. *J Crohns Colitis*. 2012;6:86–94.
42. Roka K, Roma E, Stefanaki K, et al. The value of focally enhanced gastritis in the diagnosis of pediatric inflammatory bowel diseases. *J Crohns Colitis*. 2013;7:797–802.
43. Cary ER, Tremaine WJ, Banks PM, et al. Isolated Crohn's disease of the stomach. *Mayo Clin Proc*. 1989;64:776–779.
44. Kuriyama M, Kato J, Morimoto N, et al. Specific gastro-duodenoscopic findings in Crohn's disease: comparison with findings in patients with ulcerative colitis and gastroesophageal reflux disease. *Dig Liver Dis*. 2008;40:468–475.
45. Fujiya M, Sakatani A, Dokoshi T, et al. A bamboo joint-like appearance is a characteristic finding in the upper gastrointestinal tract of Crohn's disease patients: a case-control study. *Medicine (Baltimore)*. 2015;94:e1500.
46. Greenstein AJ, Present DH, Sachar DB, et al. Gastric fistulas in Crohn's disease. Report of cases. *Dis Colon Rectum*. 1989;32:888–892.
47. Genta RM, Sonnenberg A. Non-*Helicobacter pylori* gastritis is common among paediatric patients with inflammatory bowel disease. *Aliment Pharmacol Ther*. 2012;35:1310–1316.
48. Wu TT, Hamilton SR. Lymphocytic gastritis: association with etiology and topology. *Am J Surg Pathol*. 1999;23:153–158.
49. McHugh JB, Gopal P, Greenson JK. The clinical significance of focally enhanced gastritis in children. *Am J Surg Pathol*. 2013;37:295–299.
50. Parente F, Cucino C, Bollani S, et al. Focal gastric inflammatory infiltrates in inflammatory bowel diseases: prevalence, immunohistochemical characteristics, and diagnostic role. *Am J Gastroenterol*. 2000;95:705–711.
51. Oberhuber G, Püspök A, Oesterreicher C, et al. Focally enhanced gastritis: a frequent type of gastritis in patients with Crohn's disease. *Gastroenterology*. 1997;112:698–706.
52. Yao K, Yao T, Iwashita A, et al. Microaggregate of immunostained macrophages in noninflamed gastroduodenal mucosa: a new useful histological marker for differentiating Crohn's colitis from ulcerative colitis. *Am J Gastroenterol*. 2000;95:1967–1973.
53. Magalhães-Costa MH, Reis BR, Chagas VL, et al. Focal enhanced gastritis and macrophage microaggregates in the gastric mucosa: potential role in the differential diagnosis between Crohn's disease and ulcerative colitis. *Arq Gastroenterol*. 2014;51:276–282.
54. Meucci G, Bortoli A, Riccioli FA, et al. Frequency and clinical evolution of indeterminate colitis: a retrospective multi-centre study in northern Italy. GSMII (Gruppo di Studio per le Malattie Infiammatorie Intestinali). *Eur J Gastroenterol Hepatol*. 1999;11:909–913.
55. Hirokawa M, Shimizu M, Terayama K, et al. Bamboo-joint-like appearance of the stomach: a histopathological study. *APMIS*. 1999;107:951–956.
56. Batts KP, Ketover S, Kakar S, et al. Appropriate use of special stains for identifying *Helicobacter pylori*: recommendations from the Rodger C. Haggitt Gastrointestinal Pathology Society. *Am J Surg Pathol*. 2013;37:e12–e22.
57. Roka K, Roubani A, Stefanaki K, et al. The prevalence of *Helicobacter pylori* gastritis in newly diagnosed children with inflammatory bowel disease. *Helicobacter*. 2014;19:400–405.
58. Xin W, Greenson JK. The clinical significance of focally enhanced gastritis. *Am J Surg Pathol*. 2004;28:1347–1351.
59. Johncilla M, Grover S, Zhang X, et al. Morphological spectrum of immune checkpoint inhibitor therapy-associated gastritis. *Histopathology*. 2020;76:531–539.
60. Shapiro JL, Goldblum JR, Petras RE. A clinicopathologic study of 42 patients with granulomatous gastritis. Is there really an “idiopathic” granulomatous gastritis? *Am J Surg Pathol*. 1996;20:462–470.
61. Wu H, Shen B. Endoscopic and histologic evaluation of the gastrointestinal tract in patients with sarcoidosis. *Eur J Gastroenterol Hepatol*. 2021;33:639–644.
62. Sanders DL, Pfeiffer RB, Hashimoto LA, et al. Pseudomembranous gastritis: a complication from aspergillus infection. *Am Surg*. 2003;69:536–538.
63. Alimchandani M, Lai JP, Aung PP, et al. Gastrointestinal histopathology in chronic granulomatous disease: a study of 87 patients. *Am J Surg Pathol*. 2013;37:1365–1372.
64. Ectors NL, Dixon MF, Geboes KJ, et al. Granulomatous gastritis: a morphological and diagnostic approach. *Histopathology*. 1993;23:55–61.
65. Tanoglu A, Erdem H, Friedland JS, et al. Clinicopathological profile of gastrointestinal tuberculosis: a multinational ID-IRI study. *Eur J Clin Microbiol Infect Dis*. 2020;39:493–500.
66. Shah J, Maity P, Kumar-M, et al. Gastroduodenal tuberculosis: a case series and a management focused systematic review. *Expert Rev Gastroenterol Hepatol*. 2021;15:81–90.
67. Zhu R, Zhou Y, Wang H, et al. Gastric tuberculosis mimicking submucosal tumor: a case series. *BMC Gastroenterol*. 2020;20:23.
68. Lv M, Tang K, Meng Y, et al. Primary isolated asymptomatic gastric tuberculosis of the cardia mimicking gastric stromal tumor: a rare case report and literature review. *BMC Gastroenterol*. 2020;20:108.
69. Bao JR, Clark RB, Master RN, et al. Acid-fast bacterium detection and identification from paraffin-embedded tissues using a PCR-pyrosequencing method. *J Clin Pathol*. 2018;71:148–153.
70. Isaacs KL. Upper gastrointestinal tract endoscopy in inflammatory bowel disease. *Gastrointest Endosc Clin N Am*. 2002;12:451–462; vii.
71. Hardee S, Alper A, Pashankar DS, et al. Histopathology of duodenal mucosal lesions in pediatric patients with inflammatory bowel disease: statistical analysis to identify distinctive features. *Pediatr Dev Pathol*. 2014;17:450–454.
72. Tobin JM, Sinha B, Ramani P, et al. Upper gastrointestinal mucosal disease in pediatric Crohn disease and ulcerative colitis: a blinded, controlled study. *J Pediatr Gastroenterol Nutr*. 2001;32:443–448.
73. Sonnenberg A, Melton SD, Genta RM. Frequent occurrence of gastritis and duodenitis in patients with inflammatory bowel disease. *Inflamm Bowel Dis*. 2011;17:39–44.
74. Reynolds HL Jr, Stellato TA. Crohn's disease of the foregut. *Surg Clin North Am*. 2001;81:117–viii.
75. Nugent FW, Roy MA. Duodenal Crohn's disease: an analysis of 89 cases. *Am J Gastroenterol*. 1989;84:249–254.
76. Nugent FW, Richmond M, Park SK. Crohn's disease of the duodenum. *Gut*. 1977;18:115–120.
77. Farman J, Faegenburg D, Dallemand S, et al. Crohn's disease of the stomach: the “ram's horn” sign. *Am J Roentgenol Radium Ther Nucl Med*. 1975;123:242–251.
78. Jaskiewicz K, Lemmer E. Histological findings in gastroduodenal mucosa in patients with Crohn's disease. Any diagnostic significance? *Pol J Pathol*. 1996;47:115–118.
79. Patterson ER, Schmidt E, Oxentenko AS, et al. Normal villous architecture with increased intraepithelial lymphocytes: a duodenal manifestation of Crohn disease. *Am J Clin Pathol*. 2015;143:445–450.

80. Ikezono G, Yao K, Imamura K, et al. Gastric metaplasia of the duodenal mucosa in Crohn's disease: novel histological and endoscopic findings. *Endosc Int Open*. 2021;9:E181–E189.
81. Bathori A, Sejben A, Hegedüs F, et al. Gastric metaplasia and paneth cell hyperplasia in the biopsy diagnosis of chronic ileitis: neglected histological features of Crohn's disease. *Mod Pathol*. 2021;34 (suppl 2):386–387.
82. Watanabe C, Komoto S, Hokari R, et al. Prevalence of serum celiac antibody in patients with IBD in Japan. *J Gastroenterol*. 2014;49:825–834.
83. North American Society for Pediatric Gastroenterology, Hepatology, and Nutrition; Colitis Foundation of America, Bouvaros A, et al. Differentiating ulcerative colitis from Crohn disease in children and young adults: report of a working group of the North American Society for Pediatric Gastroenterology, Hepatology, and Nutrition and the Crohn's and Colitis Foundation of America. *J Pediatr Gastroenterol Nutr*. 2007;44:653–674.
84. Ashton JJ, Bonduelle Q, Mossotto E, et al. Endoscopic and histological assessment of paediatric inflammatory bowel disease over a 3-year follow-up period. *J Pediatr Gastroenterol Nutr*. 2018;66:402–409.
85. Kuroki H, Sugita A, Koganei K, et al. Two cases of esophageal ulcer after surgical treatment for ulcerative colitis. *Clin J Gastroenterol*. 2020;13:495–500.
86. Rosendorff C, Grieve NW. Ulcerative oesophagitis in association with ulcerative colitis. *Gut*. 1967;8:344–347.
87. Lin J, McKenna BJ, Appelman HD. Morphologic findings in upper gastrointestinal biopsies of patients with ulcerative colitis: a controlled study. *Am J Surg Pathol*. 2010;34:1672–1677.
88. Hisabe T, Matsui T, Miyaoka M, et al. Diagnosis and clinical course of ulcerative gastroduodenal lesion associated with ulcerative colitis: possible relationship with pouchitis. *Dig Endosc*. 2010;22:268–274.
89. Ikeuchi H, Hori K, Nishigami T, et al. Diffuse gastro-duodenitis and pouchitis associated with ulcerative colitis. *World J Gastroenterol*. 2006;12:5913–5915.
90. Hoentjen F, Hanauer SB, Hart J, et al. Long-term treatment of patients with a history of ulcerative colitis who develop gastritis and pan-enteritis after colectomy. *J Clin Gastroenterol*. 2013;47:52–57.
91. Hori K, Ikeuchi H, Nakano H, et al. Gastroduodenitis associated with ulcerative colitis. *J Gastroenterol*. 2008;43:193–201.
92. Yokota K, Saito Y, Einami K, et al. A bamboo joint-like appearance of the gastric body and cardia: possible association with Crohn's disease. *Gastrointest Endosc*. 1997;46:268–272.
93. Choi YS, Kim JK, Kim WJ, et al. Remission of diffuse ulcerative duodenitis in a patient with ulcerative colitis after infliximab therapy: a case study and review of the literature. *Intest Res*. 2019;17:273–277.
94. Chiba M, Ono I, Wakamatsu H, et al. Diffuse gastro-duodenitis associated with ulcerative colitis: treatment by infliximab. *Dig Endosc*. 2013;25:622–625.
95. Hueting WE, Buskens E, van der Tweel I, et al. Results and complications after ileal pouch anal anastomosis: a meta-analysis of 43 observational studies comprising 9,317 patients. *Dig Surg*. 2005;22:69–79.
96. de Zeeuw S, Ahmed Ali U, Donders RA, et al. Update of complications and functional outcome of the ileo-pouch anal anastomosis: overview of evidence and meta-analysis of 96 observational studies [published correction appears in *Int J Colorectal Dis*. 2012 Apr;27(4):553. Ali, Usama Ahmed [corrected to Ahmed Ali, Usama]]. *Int J Colorectal Dis*. 2012;27:843–853.
97. Øresland T, Bemelman WA, Sampietro GM, et al. European evidence based consensus on surgery for ulcerative colitis. *J Crohns Colitis*. 2015;9:4–25.
98. Ng KS, Gonsalves SJ, Sagar PM. Ileal-anal pouches: a review of its history, indications, and complications. *World J Gastroenterol*. 2019;25:4320–4342.
99. Shen B, Patel S, Lian L. Natural history of Crohn's disease in patients who underwent intentional restorative proctocolectomy with ileal pouch-anal anastomosis. *Aliment Pharmacol Ther*. 2010;31:745–753.
100. Le Q, Melmed G, Dubinsky M, et al. Surgical outcome of ileal pouch-anal anastomosis when used intentionally for well-defined Crohn's disease. *Inflamm Bowel Dis*. 2013;19:30–36.
101. Dayton MT, Larsen KR, Christiansen DD. Similar functional results and complications after ileal pouch-anal anastomosis in patients with indeterminate vs ulcerative colitis. *Arch Surg*. 2002;137:690–695.
102. Lopez NE, Zaghyian K, Fleshner P. Is there a role for ileal pouch anal anastomosis in Crohn's disease? *Clin Colon Rectal Surg*. 2019;32:280–290.
103. Stocchi L, Pemberton JH. Pouch and pouchitis. *Gastroenterol Clin North Am*. 2001;30:223–241.
104. Tekkis PP, Lovegrove RE, Tilney HS, et al. Long-term failure and function after restorative proctocolectomy—a multi-centre study of patients from the UK National Ileal Pouch Registry. *Colorectal Dis*. 2010;12:433–441.
105. Fazio VW, Kiran RP, Remzi FH, et al. Ileal pouch anal anastomosis: analysis of outcome and quality of life in 3707 patients. *Ann Surg*. 2013;257:679–685.
106. Philpott RJ. Etiology and pathogenesis of pouchitis. *Sem Colon Rectal Surg*. 2017;28:121–125.
107. Garcia-Armengol J, Hinojosa J, Lledo S, et al. Prospective study of morphologic and functional changes with time in the mucosa of the ileoanal pouch: functional appraisal using transmucosal potential differences. *Dis Colon Rectum*. 1998;41:846–853.
108. Shepherd NA, Jass JR, Duval I, et al. Restorative proctocolectomy with ileal reservoir: pathological and histochemical study of mucosal biopsy specimens. *J Clin Pathol*. 1987;40:601–607.
109. Shen B, Achkar JP, Lashner BA, et al. A randomized clinical trial of ciprofloxacin and metronidazole to treat acute pouchitis. *Inflamm Bowel Dis*. 2001;7:301–305.
110. Loughrey MB, Shepherd NA. Diagnostic dilemmas in chronic inflammatory bowel disease. *Virchows Arch*. 2018;472:81–97.
111. Goldstein NS, Sanford WW, Bodzin JH. Crohn's-like complications in patients with ulcerative colitis after total proctocolectomy and ileal pouch-anal anastomosis. *Am J Surg Pathol*. 1997;21:1343–1353.
112. Weber CR, Rubin DT. Chronic pouchitis versus recurrent Crohn's disease: a diagnostic challenge. *Dig Dis Sci*. 2013;58:2748–2750.
113. Bell AJ, Price AB, Forbes A, et al. Pre-pouch ileitis: a disease of the ileum in ulcerative colitis after restorative proctocolectomy. *Colorectal Dis*. 2006;8:402–410.
114. Slatter C, Girgis S, Huynh H, et al. Pre-pouch ileitis after colectomy in paediatric ulcerative colitis. *Acta Paediatr*. 2008;97:381–383.
115. Rottoli M, Vallicelli C, Bigonzi E, et al. Prepouch ileitis after ileal pouch-anal anastomosis: patterns of presentation and risk factors for failure of treatment. *J Crohns Colitis*. 2018;12:273–279.
116. Samaan MA, de Jong D, Sahami S, et al. Incidence and severity of prepouch ileitis: a distinct disease entity or a manifestation of refractory pouchitis? *Inflamm Bowel Dis*. 2016;22:662–668.
117. Wolf JM, Achkar JP, Lashner BA, et al. Afferent limb ulcers predict Crohn's disease in patients with ileal pouch-anal anastomosis. *Gastroenterology*. 2004;126:1686–1691.
118. Sherman J, Greenstein AJ, Greenstein AJ. Ileal j pouch complications and surgical solutions: a review. *Inflamm Bowel Dis*. 2014;20:1678–1685.
119. Kayal M, Plietz M, Rizvi A, et al. Inflammatory pouch conditions are common after ileal pouch anal anastomosis in ulcerative colitis patients. *Inflamm Bowel Dis*. 2020;26:1079–1086.
120. Kayal M, Tixier E, Plietz M, et al. *Clostridioides difficile* infection is a rare cause of infectious pouchitis. *Inflamm Intest Dis*. 2020;5:59–64.

121. Zezos P, Saibil F. Inflammatory pouch disease: the spectrum of pouchitis. *World J Gastroenterol.* 2015;21:8739–8752.
122. Boonstra K, Beuers U, Ponsioen CY. Epidemiology of primary sclerosing cholangitis and primary biliary cirrhosis: a systematic review. *J Hepatol.* 2012;56:1181–1188.
123. Nakazawa T, Naitoh I, Hayashi K, et al. Inflammatory bowel disease of primary sclerosing cholangitis: a distinct entity? *World J Gastroenterol.* 2014;20:3245–3254.
124. de Vries AB, Janse M, Blokzijl H, et al. Distinctive inflammatory bowel disease phenotype in primary sclerosing cholangitis. *World J Gastroenterol.* 2015;21:1956–1971.
125. Zheng HH, Jiang XL. Increased risk of colorectal neoplasia in patients with primary sclerosing cholangitis and inflammatory bowel disease: a meta-analysis of 16 observational studies. *Eur J Gastroenterol Hepatol.* 2016;28:383–390.
126. Tlaskalová-Hogenová H, Stěpánková R, Kozáková H, et al. The role of gut microbiota (commensal bacteria) and the mucosal barrier in the pathogenesis of inflammatory and autoimmune diseases and cancer: contribution of germ-free and gnotobiotic animal models of human diseases. *Cell Mol Immunol.* 2011;8:110–120.
127. Palmela C, Peerani F, Castaneda D, et al. Inflammatory bowel disease and primary sclerosing cholangitis: a review of the phenotype and associated specific features. *Gut Liver.* 2018;12:17–29.
128. Jørgensen KK, Grzyb K, Lundin KE, et al. Inflammatory bowel disease in patients with primary sclerosing cholangitis: clinical characterization in liver transplanted and nontransplanted patients. *Inflamm Bowel Dis.* 2012;18:536–545.
129. Sano H, Nakazawa T, Ando T, et al. Clinical characteristics of inflammatory bowel disease associated with primary sclerosing cholangitis. *J Hepatobiliary Pancreat Sci.* 2011;18:154–161.