

RESEARCH ARTICLE

Open Access

Effectiveness of rotavirus vaccines, licensed but not funded, against rotavirus hospitalizations in the Valencia Region, Spain

Silvia Pérez-Vilar¹, Javier Díez-Domingo^{1*}, Mónica López-Lacort¹, Sergio Martínez-Úbeda¹ and Miguel A Martínez-Beneito^{2,3}

Abstract

Background: Although rotavirus vaccines have been licensed in Spain for over 8 years, they are not funded by its public health systems. The analysis of their effectiveness in the Valencia Region could better inform decisions about potential inclusion in the official immunization schedule. Our aim was to assess the effectiveness of Rotarix® (RV1) and RotaTeq® (RV5) against rotavirus hospitalizations.

Methods: We conducted a retrospective cohort study using the region's health care databases, among resident children aged <3 years covered by the National Health System, during January 2007–June 2012. We compared two cohorts of vaccinated children: the first included children who received at least one dose of a rotavirus vaccine, and the second included children who were not vaccinated with rotavirus vaccines but received at least one dose of a pneumococcal vaccine, another licensed but non-funded vaccine. The main outcome was rotavirus hospitalization, either laboratory-confirmed (confirmed) or codified as rotavirus (probable). Rotavirus vaccine effectiveness (RVE) by vaccine brand was assessed using Cox proportional hazards models.

Results: The study included 78,281 rotavirus and 96,643 pneumococcal vaccinees. Adjusted RVE against probable or confirmed rotavirus hospitalizations was 86% (95% CI: 78–91%) and 88% (95% CI: 81–92%) for a complete series of RV1 and RV5 respectively.

Conclusions: Both rotavirus vaccines were over 85% effective against rotavirus hospitalization among young children. The high effectiveness shown argues in favor of their inclusion in the official schedule. Additional information on rotavirus vaccine safety, duration of protection, and benefit-risk will also be needed to inform such deliberations.

Keywords: Rotavirus, Rotavirus vaccines, Gastroenteritis, Diarrhea, Hospitalization, Effectiveness

Background

Rotavirus is the leading cause of severe pediatric gastroenteritis: 39% (29%–45%) of hospitalized diarrhea cases worldwide during 2000–2004 were attributable to rotavirus [1]. In the Valencia Region, rotavirus is responsible for 53% of all gastroenteritis hospitalizations among children aged <5 years [2]. Younger children have a significantly higher risk of a primary infection leading to severe diarrhea, defined as diarrhea requiring hospitalization. Most serious episodes occur among children aged 3–35 months.

Children who suffer natural rotavirus infection develop some immunity to disease, decreasing the severity of subsequent infections and increasing the protective effect following each infection. Natural infection may provide protection against multiple serotypes since the antibody response to natural infection appears to be heterotypic [3,4].

Two oral live-attenuated rotavirus vaccines are currently licensed: a monovalent human vaccine (RV1), (Rotarix®; GlaxoSmithKline Biologicals, Rixensart, Belgium), indicated as a two-dose series in infants between the ages of 6–12 and 24 weeks [5], and a pentavalent bovine-human reassortant vaccine (RV5), (RotaTeq®; Merck & Co., Inc., West Point, PA, USA), indicated as a three-dose series starting at 6–12 weeks and ending ≤32 weeks of age [6]. Both vaccines

* Correspondence: diez_jav@gva.es

¹Vaccine Research, Fundación para el Fomento de la Investigación Sanitaria y Biomédica de la Comunitat Valenciana, FISABIO-Public Health, Valencia, Spain
Full list of author information is available at the end of the article

showed high efficacy against serotypes included in the vaccine [7,8], and high direct effectiveness in preventing rotavirus cases and hospitalizations [9-13]. Herd immunity has been suggested by studies from countries that introduced universal rotavirus vaccination [13-15].

RV1 and RV5 have been available in Spain since August 2006 and January 2007, respectively. Although institutions such as the World Health Organization, the Centers for Disease Control and Prevention, and the Pediatric Spanish Society, recommend the inclusion of rotavirus vaccination in national immunization programmes [4,16-18], rotavirus vaccines are not funded by the Spanish National Health System (NHS). Due to the incidental finding of circovirus DNA contamination in both vaccines, the Spanish Medicines Agency suspended RV5 distribution during June-November 2010, and RV1 distribution since March 2010 [19]. As of this publication, RV1 distribution remains suspended in Spain.

Our objective was to assess rotavirus vaccine effectiveness (VE), in complete and incomplete schedules, to prevent severe rotavirus gastroenteritis among children aged <3 years in the Valencia Region using electronic health care databases. Since rotavirus vaccines in Spain, a country with universal health coverage, are licensed but not funded, results of this study could better inform decisions regarding the potential inclusion of these vaccines in the official immunization schedule.

Methods

Retrospective cohort study of Valencia Region's children covered by the Spanish Health Care System performed using the region's health care databases during 1st January 2007- 30th June 2012.

Study setting and data sources

The Valencia Region has a population of approximately 5,000,000 inhabitants and an annual birth cohort of around 48,000 infants. Almost all the population (98.3%) is covered by the health system [20], which includes 24 pediatric hospitals. All health care users have a unique identification number that allows linking all health care databases and all medical records. The regional population-based administrative database, SIP, collects and updates demographic data, health services assignment, and use of the NHS, for both residents and non-residents.

Hospitalized cases were obtained from CMBD, the Spanish hospital discharge database [21]. In CMBD, diagnoses and procedures are collected as an assessment of medical activity and coded by trained personnel. The coding system used is the International Classification of Diseases 9th Revision, Clinical Modification (ICD-9-CM). Using CMBD is compulsory for all public hospitals. The regional microbiological surveillance network database, RedMIVA, provided rotavirus detection results; this database is linked

to all Valencia's public microbiological laboratories daily [22]. Vaccination status was obtained from SIV, the regional vaccine information system. Funded and non-funded vaccines administered in all public and some private health centers are recorded on SIV [23]. Registration procedures are the same regardless of whether vaccines are included in the official immunization schedule.

Study population

The study included all children aged <36 months born since 1st January 2007 until the end of the study period, affiliated to the NHS at six weeks of age or earlier, residents in the Valencia Region for at least four weeks, and registered in SIV as vaccinated with at least one dose of rotavirus and/or pneumococcal conjugate vaccine (PCV). Children who received at least one dose of rotavirus vaccine (having, or not, received PCV) were included in the rotavirus-vaccinated cohort, and children who received at least one dose of PCV but no rotavirus vaccine were included in the comparison cohort. As rotavirus vaccines, PCVs are licensed but not included in the official immunization schedule; they are also administered to infants from six weeks of age onwards.

Children were excluded from the study if they were vaccinated before six weeks of age, after one year of age, with less than three weeks elapsed between administrations of subsequent vaccine doses, with more than one vaccine brand, with unknown vaccine brand, with more than two doses of RV1, or with more than three doses of RV5.

The observation period began on birthdate and ended on: (1) the date of exit in SIP (regardless of the reason), (2) the date of the first rotavirus positive result, (3) the first rotavirus hospitalization (ICD-9-CM code 008.61 in any diagnosis position), (4) the end of the study period, or (5) the date prior to reaching 36 months of age, whichever occurred earlier.

Case definition

Our outcomes were: (a) *confirmed hospitalized rotavirus cases*, defined as first hospitalization with a discharge diagnosis of intestinal infectious disease (ICD-9-CM codes 001-009) in any diagnosis position, plus a laboratory confirmed rotavirus result associated with the admission; and (b) *probable hospitalized rotavirus cases*, defined as first hospitalization with a discharge diagnosis of enteritis due to rotavirus (ICD-9-CM code 008.61) in any diagnosis position.

A laboratory confirmed rotavirus test was considered associated to the admission if the result was available within five days prior to admission and 15 days after discharge. Stool samples were assayed using techniques made available by each hospital. The decision to perform a stool test was not systematic and depended on each health department and pediatrician.

Exposure

Vaccination status was assessed as a time-varying exposure. Eligible children were considered as vaccinated with a dose of rotavirus vaccine when at least 14 days [7] had elapsed since each dose administration. The following categories were used:

- 1) *Fully vaccinated* (three doses of RV5 or two doses of RV1);
- 2) *Partially vaccinated two doses* (two doses of RV5);
- 3) *Partially vaccinated one dose* (one dose of RV5 or RV1);
- 4) *Unvaccinated* (absence of record for rotavirus vaccination in SIV);

If one or more of the vaccine doses registered as administered did not indicate vaccine brand, the brand assumed for all doses was the one specifically mentioned for the remaining doses.

Statistical analysis

Proportions in distribution by gender, residence status (as registered in SIP), year of birth, having health coverage within the public system at the time of data extraction, having received any vaccination by a private provider, and performance of a rotavirus laboratory test were compared using chi-square and Fisher's exact tests.

Age at dose administration and intervals between doses were described for rotavirus vaccinees using proportions and medians.

Rotavirus VE was calculated as $(1 - \text{hazard ratio}) \times 100\%$. Cox proportional hazard models with time-varying covariates were used for estimating the hazard of rotavirus hospitalization for the study groups. The model was adjusted for gender, having received any vaccination by a private provider, and zip code (random effects). Rotavirus seasonality (December-April) [24], and year of birth did not satisfy the proportional hazard assumption; therefore, the model was stratified for them solving the non-proportional issues arising [25]. Age was implicitly adjusted for in the model. Analyses were performed: (a) jointly for confirmed and probable hospitalized rotavirus cases, and (b) for confirmed hospitalized rotavirus cases only, evaluating also the effect of being partially or fully vaccinated. An additional analysis on children fulfilling the product information criteria for timing of vaccination was also carried out (maximum age at administration of the 3rd dose for RV5 was 32 weeks).

In another analysis, we estimated VE by annual rotavirus epidemic season (December-April) among fully vaccinated children. The models were adjusted for gender, receipt of at least one vaccine in a private center, and zip code (random effects).

All analyses were performed by vaccine brand. Analyses were carried out using R Statistical Software (Foundation

for Statistical Computing, Vienna, Austria) version 3.0.3. All tests were two-sided with a significance level of 0.05.

Ethical considerations

The Ethics Research Committee of the Dirección General de Salud Pública/Centro Superior de Investigación en Salud Pública approved the study.

Results

Characteristics of the study population

The study included 174,924 eligible children, representing 59% of the 294,716 total eligible children of compatible age covered by the NHS (Figure 1). Among them, 78,281 children were vaccinated against rotavirus, contributing 173,973 person-years to the study, and 96,643 children were in the comparison group, contributing 216,416 person-years. The median follow-up was 1,013 days, with an interquartile range (IQR) of 540–1,094 days.

Almost all (96.7%) rotavirus vaccinees had also received PCVs. The cohort of children vaccinated with any rotavirus vaccine, and the comparison cohort (children vaccinated with pneumococcal vaccine) were similar with respect to gender, residence status, and performance of a rotavirus detection test during gastroenteritis hospitalization. Children included in the rotavirus cohort were more likely to be vaccinated in private centers (14.4% vs. 10.9%; $p < 0.001$) and slightly more likely to be covered by the universal health system (95.3% vs. 93.7%; $p < 0.001$) than children included in the non-rotavirus cohort. Differences in birth year between groups were found, reflecting differences in the uptake of each vaccine after their respective introduction in the Spanish market and in the start and end of suspension of each vaccine's distribution by Spanish authorities. An apparent lower uptake of the vaccines in 2012 was due to the end of the study period in mid-2012 (Table 1).

Of 78,281 children included in the rotavirus-vaccinated cohort, 24,723 (32%) were vaccinated with at least one dose of RV1, and 53,558 (68%) received at least one dose of RV5. A total of 21,119 (85%) and 34,865 (65%), respectively, of RV1 and RV5 vaccinees, completed the two and three-dose series. Of them, 19,751 (94%) and 30,066 (86%) of RV1 and RV5 vaccinees were vaccinated within the times indicated in the respective product information.

Among children partially vaccinated, 3,604 children received one dose of RV1, and 10,130 and 8,563 two and one dose of RV5, respectively (Table 2).

Rotavirus vaccine effectiveness

There were 22 probable or confirmed rotavirus hospitalizations among children fully vaccinated with RV1, 20 among children fully vaccinated with RV5, and 768 among non-rotavirus vaccinated children. Among cases vaccinated with RV1 and RV5, 22 (100%) and 19 (95%),

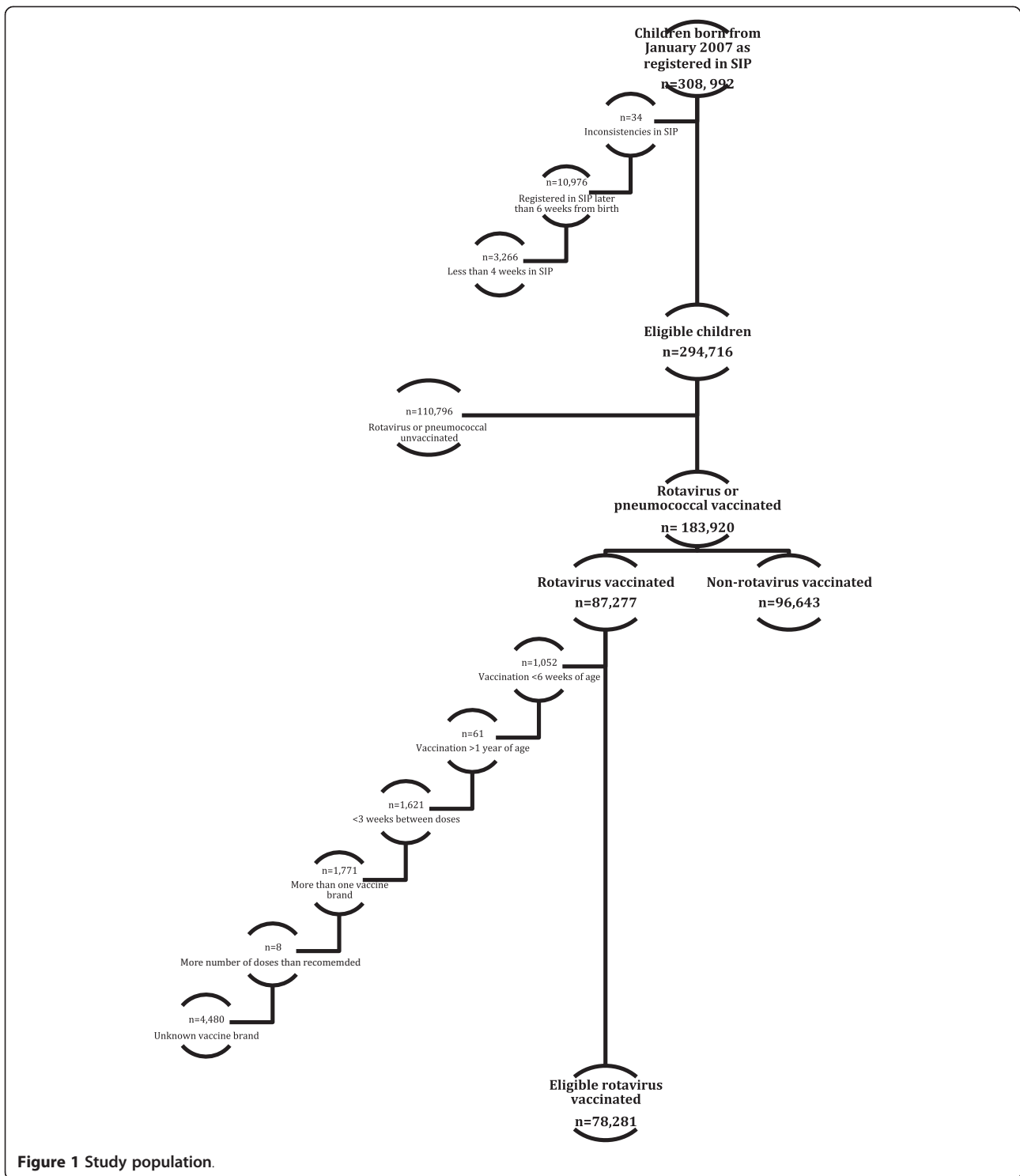


Figure 1 Study population.

respectively, had been vaccinated in accordance with the respective product’s indication. Adjusted VE against probable or confirmed rotavirus hospitalization was 86% (95% CI: 78-91%) for a full two-dose series of RV1, and 88% (95% CI: 81-92%) for a full three-dose series of RV5. Adjusted VE in children in full compliance with

the product indication for timing of vaccine administration was 85% (95% CI: 77-90%) for RV1 and 87% (95% CI: 80-92%) for RV5.

There were six probable or confirmed rotavirus hospitalizations in children partially vaccinated with RV1, six in children vaccinated with two doses of RV5, and nine

Table 1 Characteristics of study population

| | RV1 cohort n = 24,723 | RV5 cohort n = 53,558 | Any rotavirus vaccine (RV1 or RV5) n = 78,281 | Comparison cohort n = 96,643 |
|---|--------------------------|--------------------------|--|---------------------------------|
| Gender | | | | |
| Male | 12,882 (52.1%) | 27,599 (51.5%) | 40,481 (51.7%) | 50,155 (51.9%) |
| Female | 11,841 (47.9%) | 25,959 (48.5%) | 37,800 (48.3%) | 46,488 (48.1%) |
| Birth year^a | | | | |
| 2007 | 3,805 (15.4%) | 3,924 (7.3%) | 7,729 (9.9%) | 22,013 (22.8%) |
| 2008 | 9,429 (38.1%) | 10,092 (18.8%) | 19,521 (24.9%) | 16,449 (17.0%) |
| 2009 | 10,759 (43.5%) | 9,688 (18.1%) | 20,447 (26.1%) | 13,147 (13.6%) |
| 2010 | 666 (2.7%) | 7,476 (14.0%) | 8,142 (10.4%) | 25,551 (26.4%) |
| 2011 | 62 (0.3%) | 16,597 (31.0%) | 16,659 (21.3%) | 16,063 (16.6%) |
| 2012 | 2 (0.01%) | 5,781 (10.8%) | 5,783 (7.4%) | 3,420 (3.5%) |
| Residence status (as registered in SIP) | | | | |
| Resident | 24,451 (99.9%) | 53,255 (99.98%) | 77,706 (99.97%) | 95,643 (99.9%) |
| Long-stay | 17 (0.1%) | 11 (0.02%) | 28 (0.03%) | 49 (0.1%) |
| Covered by the universal health system^b | | | | |
| Yes | 23,319 (95.3%) | 50,748 (95.3%) | 74,067 (95.3%) | 89,633 (93.7%) |
| No | 1,149 (4.7%) | 2,518 (4.7%) | 3,667 (4.7%) | 6,059 (6.3%) |
| Any vaccination by a private provider | | | | |
| Yes | 2,846 (11.5%) | 8,426 (15.7%) | 11,272 (14.4%) | 10,501 (10.9%) |
| No | 21,877 (88.5%) | 45,132 (84.3%) | 67,009 (85.6%) | 86,142 (89.1%) |
| AGE^c hospitalization^d | | | | |
| At least one admission | 230 (0.9%) | 332 (0.6%) | 562 (0.7%) | 1,522 (1.6%) |
| Rotavirus test performed | | | | |
| During any AGE hospitalization ^d | 183 (79.6 %) | 267 (80.4 %) | 450 (80.1%) | 1,185 (77.9 %) |

^aNumber of children born each year. The study period ended in June 2012.

^bAnswer NO refers to requested extension of the assistance, without resources/solidarity card, out-of-date accreditation, or non-accredited at the time of data extraction.

^cAcute gastroenteritis.

^dDischarge diagnosis of intestinal infectious disease (ICD-9-CM codes 001–009).

in children vaccinated with one dose of RV5. Unadjusted and adjusted assessments for all outcomes and vaccination status studied are shown in Table 3.

There were no differences in adjusted VE between the four-rotavirus epidemic seasons studied (there were no cases in the vaccinated group during the season 2007–2008) among fully vaccinated children (Figure 2).

Discussion

In this large population-based observational study including 78,281 children vaccinated with rotavirus vaccines and 96,643 children vaccinated with PCVs (and not with rotavirus vaccines), RV1 and RV5 showed high and similar effectiveness in preventing hospitalizations among young children. Our VE estimates are comparable to those obtained in other observational studies performed in countries in which rotavirus vaccines are included in the official schedules [13,26–28]. Our results are also similar to those obtained in post-licensure studies in countries without

systematic rotavirus vaccination, including Spain [11,29,30]. Nevertheless, our study design, large sample size, and long study period, which included five rotavirus epidemic seasons, gave us the opportunity for providing precise adjusted effectiveness estimates by vaccine brand, including in partially vaccinated children, across a large time period.

Both vaccines were evaluated using a specific case definition. Since a discharge code may represent a rule-out diagnosis, an unconfirmed diagnosis, or may have been recorded incorrectly, we previously assessed the positive predictive value of the ICD-9-CM rotavirus code (008.61) using as gold standard the microbiological results from RedMIVA. The high positive predictive value found ($\cong 90\%$) showed that hospitalized cases with or without a detection test result available could both be included, increasing the total number of study cases while assuring specificity in the case definition [31]. Accordingly, there were no significant differences between VE estimates based

Table 2 Patterns of vaccine administration in the rotavirus vaccinated cohort

| Rotavirus vaccination | RV1 | RV5 |
|--|-------------------|-------------------|
| First dose | n = 24,723 | n = 53,558 |
| Week of age at vaccination (median; IQR) | 9 (9–11) | 9 (9–10) |
| Dose administration >12 weeks ^a (n; %) | 5,263 (21%) | 6,515 (12%) |
| Second dose | n = 21,119 | n = 44,995 |
| Week of age at vaccination (median; IQR) | 18 (17–19) | 17 (15–18) |
| Dose administration >24 weeks ^b (n; %) | 1,172 (6%) | - |
| 1 st - 2 nd dose interval in weeks (median; IQR) | 9 (8–9) | 8 (5–9) |
| 1 st - 2 nd dose interval 22–27 days (n; %) | 213 (1%) | 1,162 (3%) |
| Third dose | - | n = 34,865 |
| Week of age at vaccination (median; IQR) | - | 26 (19–27) |
| Dose administration >32 weeks ^c (n; %) | - | 179 (1%) |
| 2 nd - 3 rd dose interval in weeks (median; IQR) | - | 8 (5–9) |
| 2 nd - 3 rd dose interval 22–27 days (n; %) | - | 1,338 (4%) |

^a>84 days; ^b>168 days; ^c>224 days.

on confirmed rotavirus cases only and those including probable cases.

Natural immunity is acquired after early exposure to the virus and confers protection against subsequent infections. Although the protective effect of a natural infection is variable [3,4], the fact that rotavirus vaccines are not

funded by the public health system, and must therefore be paid by parents, could have influenced the pediatrician's recommendation to vaccinate children who suffered a prior rotavirus disease. By censoring children after the first confirmed rotavirus infection, we may have decreased the potential risk of confounding by indication [32]. Although we excluded children with prior known rotavirus infections, we could not be certain that all vaccinated children were naïve to rotavirus infections, because: (1) asymptomatic infections could provide protection similar to that induced by symptomatic disease [3], (2) our study began in 2007, year in which RedMIVA was still being implemented and not all laboratory results were available [22], and (3) an indeterminate number of ambulatory/Emergency Department cases were not tested for rotavirus infection. Nevertheless, these issues could not have substantially affected our results because the resulting bias should have driven results towards finding no differences between the groups being compared, and our VE estimates were high. Moreover, our results were comparable to those from other studies. Nonetheless, by censoring after 'non-hospitalized' infections, we might have introduced an informative censoring bias also affecting our VE estimates (these children are unlikely to subsequently have a rotavirus hospitalization). Given these concerns, we also performed an additional analysis without censoring children with non-hospitalized cases, and our VE estimates remained unchanged (results available in authors' response to reviewers).

The fact that these vaccines were not included in the official immunization schedule might suggest the possibility of significant underreporting of vaccination, and differences between rotavirus vaccinees and non-vaccinees with respect to risk factors for natural disease. For these

Table 3 Unadjusted and adjusted rotavirus vaccine effectiveness in preventing hospitalizations due to rotavirus gastroenteritis by vaccine brand and number of doses received

| Vaccination status | Confirmed and probable hospitalized rotavirus cases | | | Confirmed hospitalized rotavirus cases | | |
|-----------------------------|---|------------------------------|-----------|--|------------------------------|-----------|
| | Cases | VE (95% CI), % Unadjusted | Adjusted | Cases | VE (95% CI), % Unadjusted | Adjusted |
| Fully vaccinated | | | | | | |
| RV1 | 22 | 87(81–92) | 86(78–91) | 20 | 86(78–91) | 84(75–90) |
| RV5 | 20 | 89(82–93) | 88(81–92) | 12 | 91(85–95) | 91(84–95) |
| RV1 ^a | 22 | 87(80–91) | 85(77–90) | 20 | 85(77–91) | 84(74–90) |
| RV5 ^a | 19 | 88(80–92) | 87(80–92) | 11 | 91(84–95) | 91(83–95) |
| Partially vaccinated | | | | | | |
| RV1 (1 dose) | 6 | 84(65–93) | 82(60–92) | 3 | 90(69–97) | 89(66–97) |
| RV5 (2 doses) | 6 | 90(77–95) | 89(75–95) | 5 | 89(74–96) | 89(73–95) |
| RV5 (1 dose) | 9 | 83(68–91) | 83(66–91) | 7 | 84(65–92) | 84(66–92) |
| Unvaccinated | | | | | | |
| | 768 | - | - | 616 | - | - |

^aChildren fulfilling the product information criteria for timing of vaccination.

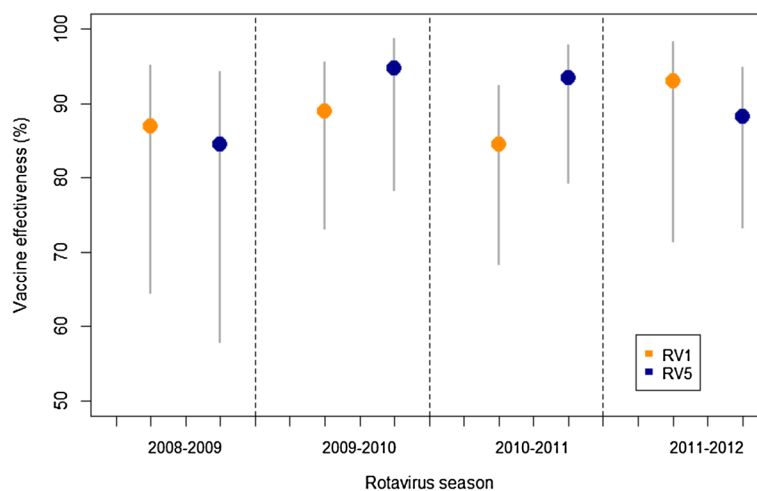


Figure 2 Adjusted rotavirus vaccine effectiveness in preventing hospitalizations due to rotavirus gastroenteritis (confirmed or probable cases) among children fully vaccinated, by rotavirus season (1st December through 30th April), and by vaccine brand.

reasons, we chose a comparison cohort that included only children registered as having received another vaccine not included in the official immunization schedule, which should have minimized differences in the likelihood of vaccination registration and in socioeconomic conditions (a proxy for risk factors for disease and hospitalization). Despite using pneumococcal conjugate vaccinees as the comparison cohort, some residual socio-economical differences between groups could have remained because this vaccine is provided free of charge to a small group of children at high risk for complications of pneumococcal infection. The slight differences found between rotavirus and non-rotavirus vaccinees for having received at least one vaccine in a private center, and for having health coverage at the time of data extraction, could reflect in part the presence of this small group. Nevertheless, the differences found in VE between unadjusted and adjusted analyses were minimal, which suggests that the effect of confounding by socio-economical conditions, if any, was small. Also, since rotavirus and PCV are not included in the official immunization schedule, and are, therefore, administered mostly in private practices, our estimates could not be generalized to the overall Valencia population. Nonetheless, although the benefits of vaccination may be more important in higher risk groups, there is no biological reason to believe that the effectiveness of rotavirus vaccines within the same geographic region should differ by socio-economic conditions.

VE estimates were also high for partially vaccinated children. These findings were similar to other observational studies examining RV5 [28,33] and higher than those studying RV1 [34]. Because the vaccine is not funded by the public health system, there is a possibility of underreporting of rotavirus vaccination by providers. Nonetheless, according to a recent study, among all rotavirus vaccine

doses distributed in Valencia during 2009–2012, most (86%) were registered in SIV as administered in children aged <1 year [35]. However, we cannot rule-out the possibility that some doses could have been missed or administered in private vaccination centers not using SIV, or outside the health care setting.

Another limitation might be due to the lack of systematic stool analyses among hospitalized children with acute gastroenteritis. Nonetheless, no differences in the proportions of laboratory tests performed were observed between the two cohorts. Moreover, as indicated earlier, the PPV of a hospital discharge diagnosis of rotavirus was high [31].

Conclusions

In summary, RV1 and RV5 were over 85% effective in preventing rotavirus hospitalizations among young children living the Valencia Region, Spain, during the study period. The high effectiveness shown should contribute to decisions regarding the inclusion of rotavirus vaccines in the official immunization schedule in Spain. Additional information on rotavirus vaccine safety, duration of protection, and benefit-risk assessments in our setting will also be needed to inform such deliberations. This study also shows that Valencia's databases could be used for the assessment of the effectiveness of vaccines not included in the official schedule.

Abbreviations

CI: Confidence Interval; CMBD: Spanish hospital discharge database; HZ: Hazard ratio; IQR: Interquartile range; NHS: National Health System; PCV: Pneumococcal conjugate vaccine; RedMIVA: Valencia's microbiological surveillance network database; RV1: Rotarix® (GlaxoSmithKline Biologicals, Rixensart, Belgium); RV5: RotaTeq® (Merck & Co., Inc., West Point, PA, USA); RVE: Rotavirus vaccine effectiveness; SIP: Valencia's administrative population-based database; SIV: Valencia's Vaccine Information System; VE: Vaccine Effectiveness.

Competing interests

SPV, JDD, and MLL are working for the Vaccine Research Department at FISABIO-Public Health, institution that has ongoing research contracts with GlaxoSmithKline Biologicals, Sanofi Pasteur MSD, and Merck & Co., Inc.

Authors' contributions

SPV, JDD, and MAMB contributed to the study design. SPV acquired the data. MLL, SMU, and MAMB managed the data. All authors participated in the analysis and interpretation of the data. SPV drafted the manuscript. All authors were involved in the critical revision of drafts and approved the final manuscript version.

Acknowledgments

Hector S. Izurieta, U.S. Food and Drug Administration (FDA), for his assistance in the study design and review of the manuscript.

Funding

This study was partially funded by EpiConcept on behalf of the European Centre for Disease Control and Prevention (ECDC).

Author details

¹Vaccine Research, Fundación para el Fomento de la Investigación Sanitaria y Biomédica de la Comunitat Valenciana, FISABIO-Public Health, Valencia, Spain. ²Health Inequalities, Fundación para el Fomento de la Investigación Sanitaria y Biomédica de la Comunitat Valenciana, FISABIO-Public Health, Valencia, Spain. ³Ciber de Epidemiología y Salud Pública-CIBERESP, Instituto de Salud Carlos III, Madrid, Spain.

Received: 17 October 2014 Accepted: 6 February 2015

Published online: 25 February 2015

References

- Parashar UD, Gibson CJ, Bresee JS, Glass RI. Rotavirus and severe childhood diarrhea. *Emerg Infect Dis*. 2006;12(2):304–6.
- Van Damme P, Giaquinto C, Huet F, Gothefer L, Maxwell M, Van der Wielen M, et al. Multicenter prospective study of the burden of rotavirus acute gastroenteritis in Europe, 2004–2005: the REVEAL study. *J Infect Dis*. 2007;195 Suppl 1:S4–16.
- Velazquez FR. Protective effects of natural rotavirus infection. *Pediatr Infect Dis J*. 2009;28(3 Suppl):S54–6.
- Parashar UD, Alexander JP, Glass RI. Advisory Committee on Immunization Practices CfDC, Prevention: Prevention of rotavirus gastroenteritis among infants and children. Recommendations of the Advisory Committee on Immunization Practices (ACIP). *MMWR Recomm Rep: Morb Mortal Wkly Rep*. 2006;55(RR-12):1–13.
- Rotarix. Product information. In: European Medicines Agency. 2015. http://www.ema.europa.eu/ema/index.jsp?curl=pages/medicines/human/medicines/000639/human_med_001043.jsp&mid=WC0b01ac058001d124. Accessed 20 Feb 2015.
- RotaTeq. Product information. In: European Medicines Agency. 2014. http://www.ema.europa.eu/ema/index.jsp?curl=pages/medicines/human/medicines/000669/human_med_001045.jsp&mid=WC0b01ac058001d124. Accessed 20 Feb 2015.
- Vesikari T, Matson DO, Dennehy P, Van Damme P, Santosham M, Rodriguez Z, et al. Safety and efficacy of a pentavalent human-bovine (WC3) reassortant rotavirus vaccine. *N Engl J Med*. 2006;354(1):23–33.
- Ruiz-Palacios GM, Perez-Schael I, Velazquez FR, Abate H, Breuer T, Clemens SC, et al. Safety and efficacy of an attenuated vaccine against severe rotavirus gastroenteritis. *N Engl J Med*. 2006;354(1):11–22.
- Cortese MM, Immergluck LC, Held M, Jain S, Chan T, Grizas AP, et al. Effectiveness of monovalent and pentavalent rotavirus vaccine. *Pediatrics*. 2013;132(1):e25–33.
- Bellido-Blasco JB, Sabater-Vidal S, Salvador-Ribera Mdel M, Arnedo-Pena A, Tirado-Balaguer MD, Meseguer-Ferrer N, et al. Rotavirus vaccination effectiveness: a case-case study in the EDICS project, Castellon (Spain). *Vaccine*. 2012;30(52):7536–40.
- Castilla J, Beristain X, Martinez-Artola V, Navascues A, Garcia Cenoz M, Alvarez N, et al. Effectiveness of rotavirus vaccines in preventing cases and hospitalizations due to rotavirus gastroenteritis in Navarre. *Spain Vaccine*. 2012;30(3):539–43.
- Wang FT, Mast TC, Glass RJ, Loughlin J, Seeger JD. Effectiveness of the pentavalent rotavirus vaccine in preventing gastroenteritis in the United States. *Pediatrics*. 2010;125(2):e208–13.
- Rha B, Tate JE, Payne DC, Cortese MM, Lopman BA, Curns AT, et al. Effectiveness and impact of rotavirus vaccines in the United States - 2006–2012. *Expert Rev Vaccines*. 2014;13(3):365–76.
- Paulke-Korinek M, Kundi M, Rendi-Wagner P, de Martin A, Eder G, Schmidle-Loss B, et al. Herd immunity after two years of the universal mass vaccination program against rotavirus gastroenteritis in Austria. *Vaccine*. 2011;29(15):2791–6.
- Giaquinto C, Jackson AE, Vesikari T. Report of the second European expert meeting on rotavirus vaccination. *Vaccine*. 2012;30(13):2237–44.
- Rotavirus vaccines WHO position paper: January 2013 - Recommendations. *Vaccine* 2013, 31(52):6170–1. doi:10.1016/j.vaccine.2013.05.037. Epub 2013 Jun 5.
- Vacunación frente a rotavirus. Documento de consenso de las sociedades científicas. In: Publicaciones. Asociación Española de Pediatría. 2008. http://www.aeped.es/sites/default/files/documentos/consenso_rotavirus.pdf. Accessed 10 Sept 2014.
- Cortese MM, Parashar UD, Centers for Disease C, Prevention. Prevention of rotavirus gastroenteritis among infants and children: recommendations of the Advisory Committee on Immunization Practices (ACIP). *MMWR Recomm Rep: Morb Mortal Wkly Rep*. 2009;58(RR-2):1–25.
- Bouzon Alejandro M, Diez Domingo J, Martinon-Torres F. Circovirus and impact of temporary withdrawal of rotavirus vaccines in Spain. *Hum Vaccin*. 2011;7(7):798–9.
- Informe Anual del Sistema Nacional de Salud 2011. In: Ministerio de Sanidad, Política Social e Igualdad. http://www.msssi.gob.es/organizacion/sns/planCalidadSNS/pdf/equidad/informeAnualSNS2011/05_INFORME_SNS_2011_ESPANYOL.pdf. Accessed 5 Sept 2014.
- Explotación del registro de altas CMDB del Sistema Nacional de Salud. In: Ministerio de Sanidad, Política Social e Igualdad. <https://www.msssi.gob.es/estadEstudios/estadisticas/cmdb/informes/introduccion.htm>. Accessed 5 Sept 2014.
- Munoz I, Vanaclocha H, Martin-Sierra M, Gonzalez F. Microbiological Surveillance Network in the Valencian community. *Enferm Infecc Microbiol Clin*. 2008;26(2):77–81.
- Pastor Villalba E, Martín Ivorra R, Alguacil Ramos AM, Portero Alonso A, Barbera Catala MA, Pons Sanchez C, et al. Sistema de Información Vacunal (SIV). Valencia, Spain: Generalitat Valenciana, Conselleria de Sanitat; 2009.
- Pérez-Vilar S, López-Lacort M, Puig-Barberà J, Pérez-Breva L, Sastre-Cantón M, Diez-Domingo J. [Falta aparente de asociación entre invaginación intestinal y circulación de rotavirus en la Comunidad Valenciana]. In: 7th Congress of the Spanish Association of Vaccinology. Cáceres (Spain); 2013. <http://www.vacunas.org/images/stories/recursos/profesionales/congresos/2013/PROG7AEV13.pdf>. Accessed 4 Sept 2014.
- Kalbfleisch JD, Prentice RL. The statistical analysis of failure time data. New York: Wiley; 1980.
- Cotes-Cantillo K, Paternina-Caicedo A, Coronell-Rodriguez W, Alvis-Guzman N, Parashar UD, Patel M, et al. Effectiveness of the monovalent rotavirus vaccine in Colombia: a case-control study. *Vaccine*. 2014;32(25):3035–40.
- Vesikari T, Uhari M, Renko M, Hemming M, Salminen M, Torcel-Pagnon L, et al. Impact and effectiveness of RotaTeq (R) vaccine based on 3 years of surveillance following introduction of a rotavirus immunization program in Finland. *Pediatr Infect Dis J*. 2013;32(12):1365–73.
- Staat MA, Payne DC, Donauer S, Weinberg GA, Edwards KM, Szilagyi PG, et al. Effectiveness of pentavalent rotavirus vaccine against severe disease. *Pediatrics*. 2011;128(2):e267–75.
- Martinon-Torres F, Bouzon Alejandro M, Redondo Collazo L, Sanchez Lastres JM, Pertega Diaz S, Seoane Pillado MT, et al. Effectiveness of rotavirus vaccination in Spain. *Hum Vaccin*. 2011;7(7):757–61.
- Chang WC, Yen C, Wu FT, Huang YC, Lin JS, Huang FC, et al. Effectiveness of 2 rotavirus vaccines against rotavirus disease in Taiwanese infants. *Pediatr Infect Dis J*. 2014;33(3):e81–6.
- López-Lacort M, Pérez-Vilar S, Martínez-Beneito MA, Pérez-Breva L, Sastre-Cantón M, Diez-Domingo J. Estimating positive predictive value of the rotavirus ICD-9-CM discharge code: what to do with cases without laboratory result? In: Abstract 755. 32nd Annual Meeting of the European Society for Paediatric Infectious Diseases. Dublin (Ireland) 2014. http://www.espid.org/content.aspx?Group=archives&Page=archive_aem. Accessed 4 Sept 2014.

32. Psaty BM, Koepsell TD, Lin D, Weiss NS, Siscovick DS, Rosendaal FR, et al. Assessment and control for confounding by indication in observational studies. *J Am Geriatr Soc*. 1999;47(6):749–54.
33. Wang FT, Mast TC, Glass RJ, Loughlin J, Seeger JD. Effectiveness of an incomplete RotaTeq (RV5) vaccination regimen in preventing rotavirus gastroenteritis in the United States. *Pediatr Infect Dis J*. 2013;32(3):278–83.
34. Ichihara MY, Rodrigues LC, Teles Santos CA, Teixeira Mda G, De Jesus SR, Alvim De Matos SM, et al. Effectiveness of rotavirus vaccine against hospitalized rotavirus diarrhea: a case–control study. *Vaccine*. 2014;32(23):2740–7.
35. Pastor-Villalba E, Martín-Ivorra R, Alguacil-Ramos AM, Portero-Alonso A, Lluçh Rodrigo J. [Exhaustividad en la declaración en el sistema de información vacunal (SIV) de vacunas no incluidas en el calendario sistemático infantil de la Comunidad Valenciana. Años 2009 a 2012]. In: P04. 7th Congress of the Spanish Association of Vaccinology. Cáceres (Spain) 2013. <http://www.vacunas.org/images/stories/recursos/profesionales/congresos/2013/PROG7AEV13.pdf>. Accessed 4 Sept 2014.

**Submit your next manuscript to BioMed Central
and take full advantage of:**

- Convenient online submission
- Thorough peer review
- No space constraints or color figure charges
- Immediate publication on acceptance
- Inclusion in PubMed, CAS, Scopus and Google Scholar
- Research which is freely available for redistribution

Submit your manuscript at
www.biomedcentral.com/submit

