

Two new species of *Brueelia* Kéler, 1936 (Ischnocera, Philopteridae) parasitic on Neotropical trogons (Aves, Trogoniformes)

Michel P. Valim[†], Jason D. Weckstein[‡]

Field Museum of Natural History, Zoology Department, 1400 South Lake Shore Drive, Chicago, IL 60605, USA

[†] [urn:lsid:zoobank.org/author:4DEAE2A6-0410-45F0-8DD2-02A07C2A3A53](https://doi.org/urn:lsid:zoobank.org/author:4DEAE2A6-0410-45F0-8DD2-02A07C2A3A53)

[‡] [urn:lsid:zoobank.org/author:D3BB6161-DC32-4BDB-9611-72EB75444F23](https://doi.org/urn:lsid:zoobank.org/author:D3BB6161-DC32-4BDB-9611-72EB75444F23)

Corresponding author: Michel P. Valim (mpvalim@hotmail.com)

Guest editor: Vincent Smith | Received 20 May 2011 | Accepted 8 August 2011 | Published 9 September 2011

[urn:lsid:zoobank.org/pub:4ABA0E24-1DAD-4D72-9E54-E005DA563F69](https://doi.org/urn:lsid:zoobank.org/pub:4ABA0E24-1DAD-4D72-9E54-E005DA563F69)

Citation: Valim MP, Weckstein JD (2011) Two new species of *Brueelia* Kéler, 1936 (Ischnocera, Philopteridae) parasitic on Neotropical trogons (Aves, Trogoniformes). ZooKeys 128: 1–13. doi: 10.3897/zookeys.128.1583

Abstract

Two new species of *Brueelia* are described and illustrated. These new species and their type hosts are: *Brueelia sueta* ex *Pharomachrus pavoninus* (Spix, 1824), the Pavonine Quetzal and *Brueelia cicchinoi* ex *Trogon viridis* Linnaeus, the White-tailed Trogon. Both new species differ from the only *Brueelia* described on *Trogon mexicanus* by many morphological features, including those present in the male genitalia and female vulvar margin. Partial sequences of the mitochondrial cytochrome oxidase I (COI) gene for these two new species differ from one another by 13.6% uncorrected p-distance. Whereas *B. cicchinoi* is only 0.3% divergent from previously published COI sequences identified as *Brueelia* sp. from the Mexican *T. melanocephalus* Gould, 1936 and *T. massena* Gould, 1938. We also found *B. cicchinoi* on *T. melanurus*, *T. collaris* and *Pharomachrus pavoninus*. Thus *B. cicchinoi* is found on multiple trogoniform hosts across an extremely large geographic distribution and has one of the largest number of host associations among *Brueelia* species.

Keywords

Chewing lice, *Brueelia*, trogons, Philopteridae, new species

Introduction

According to Price et al. (2003), *Brueelia* Kéler, 1936 (Ischnocera) is the most speciose genus of parasitic lice within the Philopteridae (Phthiraptera), with about 280 species currently described. Members of this genus parasitize the largest avian order, Passeriformes, but they also occur on Piciformes and Coraciiformes. Thus, due to the extremely large number of potential hosts, worldwide distribution, and complicated taxonomy there are probably hundreds of undescribed *Brueelia* species waiting to be discovered and described.

The only *Brueelia* species parasitic on trogons (Aves, Trogoniformes), *B. insolita*, was described by Cicchino (1983) from *Trogon mexicanus* Swainson, 1827 collected in Guatemala, and this taxon was transferred to *Trogoninirmus* Eichler, 1944 by Price et al. (2003) without justification. Perhaps the authors simply assumed that trogons could not harbor species of *Brueelia*. However, the original description of *Brueelia insolita* is indubitably a *Brueelia* species (Cicchino 1983: 284) rather than a *Trogoninirmus* (Price et al., 2003: 245). A molecular phylogenetic study published by Johnson et al. (2002) includes *Brueelia* specimens collected from two *Trogon* species and those specimens are genetically differentiated from all other *Brueelia* included in the study but fall phylogenetically within *Brueelia* parasitizing Passeriformes. This paper describes two additional species of *Brueelia* collected from Neotropical trogons.

Methods

Specimens used in this study have been collected by the junior author and/or his colleagues using the Ethyl Acetate fumigation technique as described in Bueter et al. (2009) and were mounted on slides following the procedures of Palma (1978). Nomenclature of the abdominal setae, different somatic features and abbreviations for the body measurements (given in millimeters) follow those proposed by Cicchino and Castro (1996). The abbreviations used were: HL, head length at midline; PAW, preantennal width; TW, temple width; PL, prothorax length; PW, prothorax width; PTL, pterothorax length; PTW, pterothorax width; AL, abdominal length; AW abdominal width (taken at segment V); GL, male genitalia length; and TL, total length. Host names were standardized following Dickinson (2003).

Using laboratory methods described by Bueter et al. (2009) we sequenced a 382 base pair (bp) portion of the mitochondrial cytochrome oxidase I (COI) gene from each of the new *Brueelia* species, including one *B. sueta* sp. n. from *P. pavoninus* and three individuals of *B. cicchinoi* sp. n. from three different host species (*T. viridis*, *T. melanurus*, and *P. pavoninus*) to assess and document their genetic distinctiveness. We made one minor modification to the voucher DNA extraction protocol. Rather than completely remove the louse head from the body for proteinase K digestion, we used a sterilized syringe needle to only partially cut the head from the body. This modification produced DNA vouchers better suited for morphological analysis and also minimized the chances of losing the head during extraction and slide mounting. The DNA sequences and their

associated DNA voucher number are deposited in GenBank (JN384116–JN384119). We also incorporated the two COI sequences from *Brueelia* sp. collected from *Trogon massena* (AY149386) and *T. melanocephalus* (AY149387), from México published by Johnson et al. (2002) and put all of these trogon *Brueelia* COI sequences into a phylogenetic context using COI sequences from Bueter et al. (2009).

We used PAUP* (version 4.0b10; Swofford 2003) to calculate uncorrected p-distances between trogon *Brueelia* sequences and to conduct a maximum parsimony (MP) heuristic search and MP bootstrap analysis of the combined Bueter et al. (2009) and trogon *Brueelia* COI dataset. We conducted a MP heuristic search with TBR branch swapping, stepwise addition, and 100 random addition replicates. For the MP bootstrap analysis we performed 1000 bootstrap replicates with one random addition per replicate.

Holotypes of the new species are deposited in the Museu de Zoologia, University of São Paulo, São Paulo, Brazil (MZUSP) and paratypes are deposited in both MZUSP and the Field Museum of Natural History, Chicago, USA (FMNH). Other specimens studied are held in the Price Institute of Phthirapteran Research, University of Utah, Salt Lake City, USA (PIPeR). For material collected in 2005 and 2007 host specimen vouchers are deposited in the Museu Paraense Emílio Goeldi (MPEG) and FMNH and are indicated by field numbers and specimen numbers.

Taxonomic treatment

Brueelia Kéler, 1936

Type species *Brueelia rossittensis* Kéler, 1936 = *Brueelia brachythorax* (Giebel, 1874).
Type host: *Bombycilla garrulus* (Linnaeus, 1758) (Passeriformes, Bombycillidae).

Brueelia sueta Valim & Weckstein, sp. n.

urn:lsid:zoobank.org:act:476AC361-B912-4BDC-8373-483E37D76E49

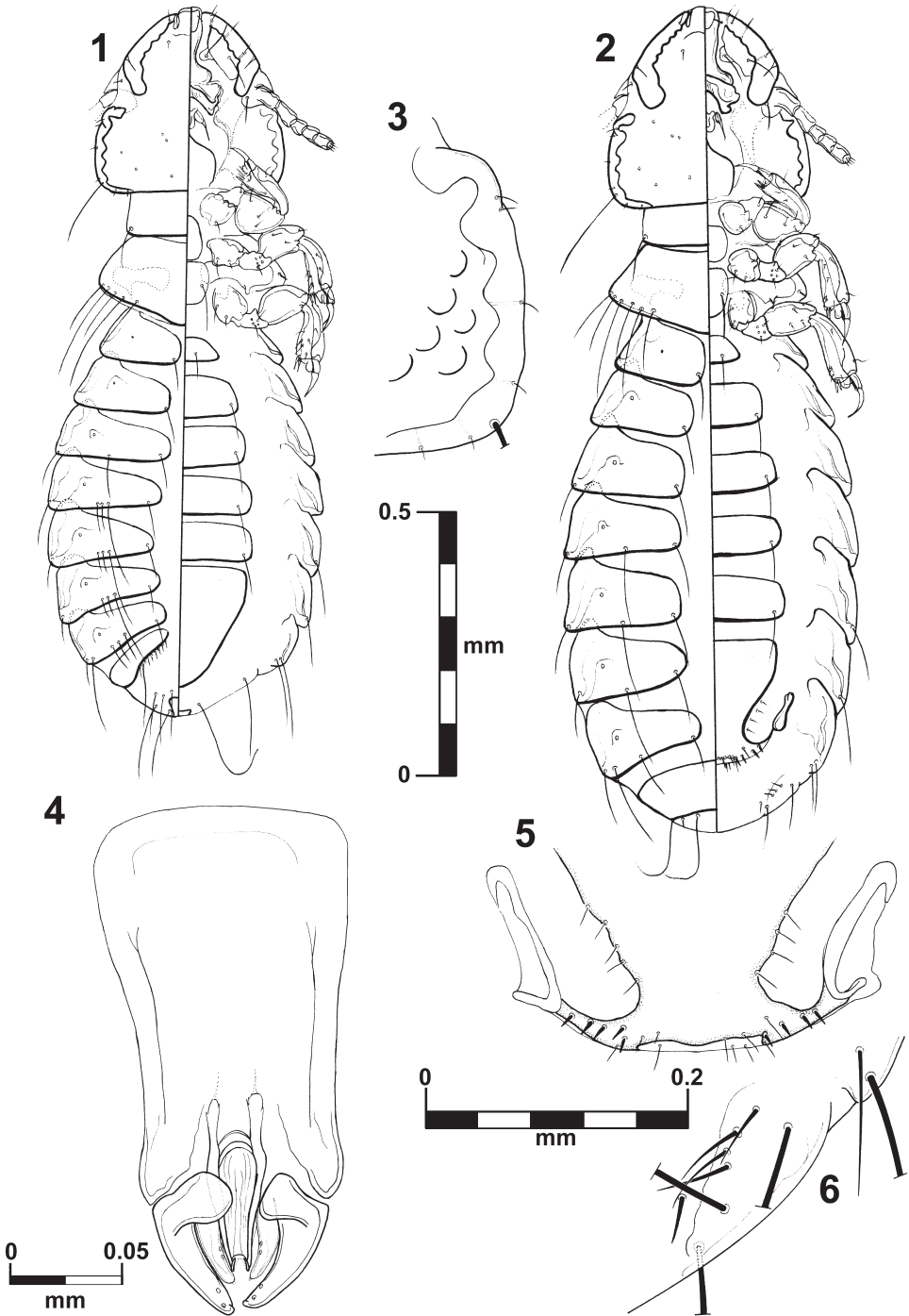
http://species-id.net/wiki/Brueelia_sueta

Figs 1–6; 13–14

Type host: *Pharomachrus pavoninus* (Spix, 1824) – Pavonine Quetzal

Diagnosis. This species is unique in the thickness of the temporal carina (Fig. 3) and by the shape of the anterior ventral plate (Figs 13–14) in both sexes. It is morphologically close to *B. insolita* due the absence of postspiracular setae on segment IV in females, but they differ significantly in characters such as shape of the vulvar margin (with a notch in *B. insolita*); number of setae on gonapophysis (six in *B. insolita*), and more spiniform setae on vulvar margin. The males of both species can be distinguished by the shape of genitalia and the tendency to have two setae postspiracular accessories on tergites V–VIII (whilst *B. insolita* has only one).

Male. Habitus as in fig. 1. Body pigmentation uniform, all plates barely yellowish slightly more pigmented on some details of the pleural areas. Head oval shaped, as long



Figures 1–6. *Brueelia sueta* sp. n.: male, dorso-ventral views (1); female, dorso-ventral views (2); temporal carina (3); male genitalia (4); female vulvar margin (5); female gonapophysis (6).

as wide. Small hyaline margin distinguishable; anterior dorsal head plate not completely surrounded by the dorsal preantennal suture. Preantennal margin slightly convex; marginal carina thickened with its inner margin sinuate, and completely pigmented (Figs 13–14). Tracks of cybarial muscles practically indistinct. Frontoclypeal suture with its nodal area well defined. Tracks of insertion of the mandibular adductor muscles well marked. Gular plate well pigmented with a broad rhombic silhouette. Temples forming an acute angle at level of the marginal temporal setae 3; temporal carina pigmented and thick, with its inner margin deeply sinuate (Fig. 3); eye imbedded within thickened carina making its distinction on margin of the head difficult (Fig. 3). Pterothorax with 5–7 marginal setae on each side; pterothoracic apodeme well developed, not reaching the lateral margin of the pterothorax. Mesosternal and metasternal plates not fused, both slightly longer than wide, only the metasternal plate bearing two long setae. Abdomen with tergites II–VIII lightly and uniformly pigmented. Tergal chaetotaxy: postspiracular long on IV–VIII; two small accessory setae on V–VIII (atypical specimens with only one seta in one side); and one sutural seta on II–VIII. Tergite IX+X (from the lateral to meson) with one short, one long and six (rarely seven) short setae. Paratergal chaetotaxy: II–III 0; IV–V 1; VI–VII 2; VIII 4. Sternal plates II–VI yellowish, typically with one pair of setae on each, subgenital plate uniformly pigmented. Genitalia (Fig. 4): basal plate wide, with sub-parallel lateral borders; straight and broad subtriangular paramera, with rhombic tips (Fig. 4); lateral sclerites of the endomerale complex long ($2/3$ of the paramera length) subtriangular with their posterior edge smooth, bearing 2 sensillae each.

Body measurements (n = 4): HL, 0.33–0.35; PAW, 0.27–0.28; TW, 0.35–0.36; PL, 0.13–0.14; PW, 0.24–0.25; PTL, 0.15–0.16; PTW, 0.34–0.35; AL, 0.71–0.80; AW 0.48–0.52; GL, 0.23; and TL, 1.25–1.35.

Female. Habitus as in figure 2. Pigmentation of the head, thorax and abdomen much as for male, differing in body size, terminalia and tergal chaetotaxy (one long postspiracular seta on V–VIII). Pterothorax with 4–6 marginal setae on each side. Tergites II–VIII divided medially, IX+X entire and uniformly pigmented. Subgenital plate uniformly pigmented, lacking posterior notch, with 3–5 small setae each side (Fig. 5). Gonapophysis commonly with 4 setae (Figs 6). Vulva with 4–5 short and spiniform setae, and 3–6 (rarely 2) long and thin setae on each side (Fig. 5).

Body measurements (n = 4): HL, 0.37–0.38; PAW, 0.30–0.31; TW, 0.38–0.39; PL, 0.13–0.16; PW, 0.26–0.27; PTL, 0.14–0.16; PTW, 0.37–0.38; AL, 0.94–1.10; AW 0.50–0.59; and TL, 1.52–1.67.

Type material. Male holotype, ex *Pharomachrus pavoninus*, JAP766 MPEG 62493; BRAZIL: Amazonas, Marañ, Lago Cumapi (01°43'48.6"S; 65°52'45.5"W), 31.VII.2007, J.D. Weckstein col., at MZUSP. Paratypes: 3 males and 4 females (one female DNA voucher Brsp.Pha.1.4.2011.19), same data as holotype. 1 male and 1 female (DNA voucher) paratypes at FMNH.

Etymology. The epithet derives from *suetus* (L.), which means: wont; accustomed; usual. It makes reference to the fact of the genus *Brueelia* is a common parasite on trogons, rather than *insolitus* (L., unusual) as believed by Cicchino (1983) who described one species of this louse genus from this host group.

***Brueelia cicchinoi* Valim & Weckstein, sp. n.**

urn:lsid:zoobank.org:act:5EF8725E-FAE3-4B43-B4F0-2EC82E090B62

http://species-id.net/wiki/Brueelia_cicchinoi

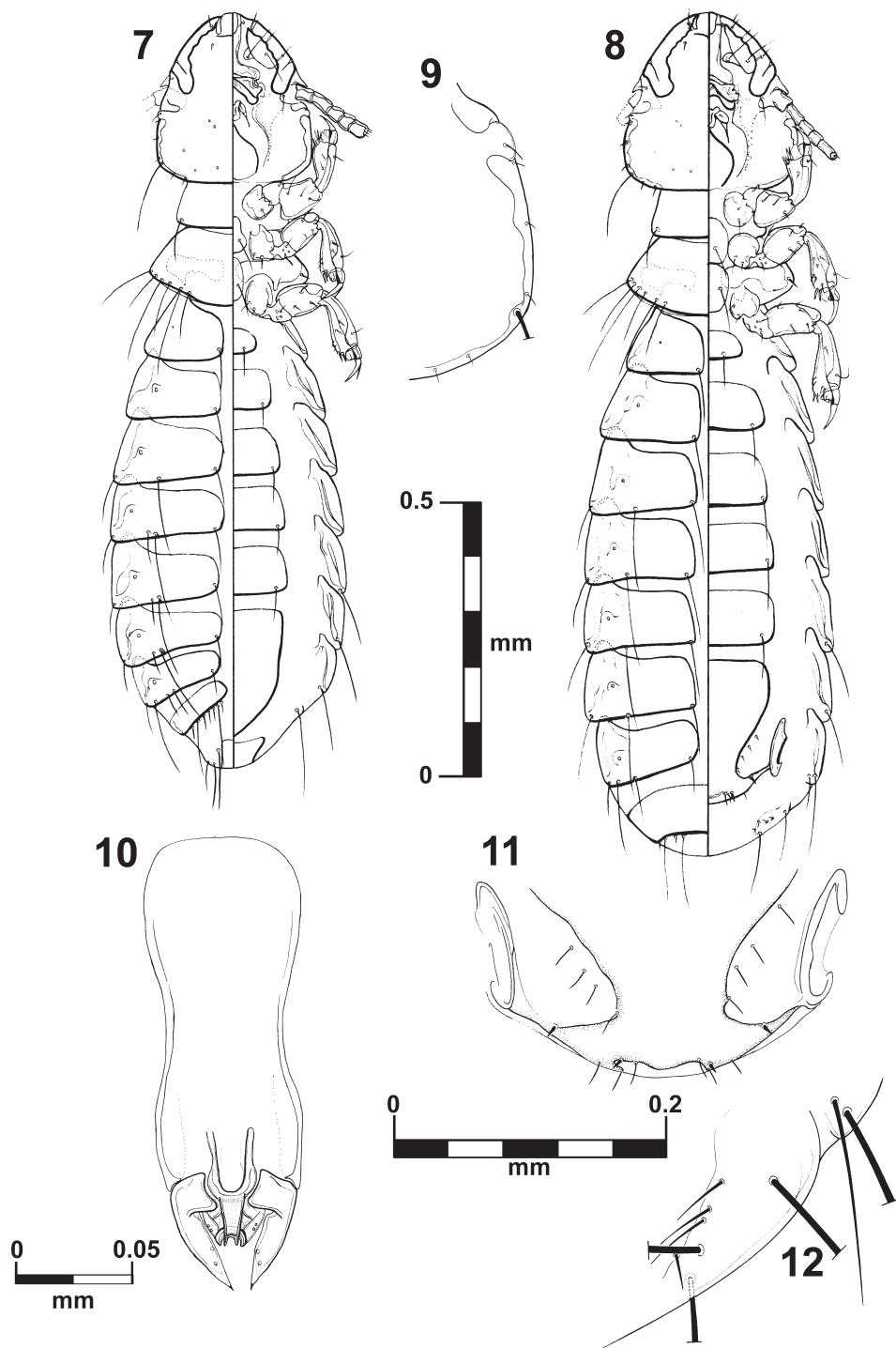
Figs 7–12; 15–16

Type host: *Trogon viridis* Linnaeus, 1766 – White-tailed Trogon

Diagnosis. The shape of the anterior ventral plate is unique in this species (Figs 15–16). It is morphologically close to *B. insolita* by the thickness of the temporal carina and by the presence of setae on the mesosternal plate; but they can be distinguished by the shape of the anterior ventral plate. The males of this species can be distinguished by the distinct genital architecture and by the presence of two long setae on tergite IX+X (only one in *B. insolita* and *B. sueta* sp. n.). In females, the presence of postspiracular setae on segment IV; the chaetotaxy of vulvar margin; and lacking of the notch on vulvar margin are the most distinctive characters. This species can be promptly distinguished from the *B. sueta* sp. n. by the thickness of the temporal carina, genitalia and tergal chaetotaxy in males; and by the presence of postspiracular setae on tergite IV and vulvar chaetotaxy in females.

Male. Habitus as in fig. 7. Body pigmentation uniform, all plates barely yellowish in color. Head oval shaped, slightly longer than wide. Hyaline margin indistinguishable; anterior dorsal head plate not completely surrounded by the dorsal preantennal suture. Preantennal margin slightly convex; marginal carina thickened with its inner margin sinuate (Figs 15–16). Tracks of cybarial muscles practically indistinct. Frontoclypeal suture with its nodal area well defined. Tracks of insertion of the mandibular adductor muscles faintly marked. Gular plate well pigmented with a broad rhombic silhouette. Temples more rounded; temporal carina pigmented and thinner, with its inner margin only superficially sinuate (Fig. 9); eye distinct from the temporal carina (Fig. 9). Pterothorax with 5–6 marginal setae on each side; pterothoracic apodeme well developed, not reaching the lateral margin of the pterothorax. Mesosternal and metasternal plates not fused, both slightly longer than wide and bearing two long setae each. Abdomen with tergites II–VIII lightly and uniformly pigmented. Tergal chaetotaxy: postspiracular long on IV–VIII; one small accessory setae on V–VIII (atypical specimens lack this seta on one side); and one sutural seta on II–VIII. Tergite IX+X (from the lateral to meson) with one short, one long, three short, one long, and one short setae. Paratergal chaetotaxy: II–III 0; IV–V 1; VI–VII 2; VIII 3. Sternal plates II–VI yellowish, typically with one pair of setae on each, subgenital plate uniformly pigmented. Genitalia (Fig. 10): basal plate wide, with concavity on lateral borders; straight and broad subtriangular paramera, with pointed tips (Fig. 10); lateral sclerites of the endomerale complex short (1/3 of the paramera length) and subtriangular with their posterior edge smooth, bearing 2 sensillae each.

Body measurements (n = 5), ex *Trogon viridis*: HL, 0.30–0.31; PAW, 0.23–0.24; TW, 0.28–0.30; PL, 0.11–0.14; PW, 0.20; PTL, 0.12–0.16; PTW, 0.27–0.28; AL, 0.77–0.87; AW 0.37–0.42; GL, 0.19–0.21; and TL, 1.27–1.38.



Figures 7–12. *Brueelia cicchini* sp. n.: male, dorso-ventral views (7); female, dorso-ventral views (8); temporal carina (9); male genitalia (10); female vulvar margin (11); female gonapophysis (12).

Body measurements (n = 3), ex *Trogon massena*: HL, 0.31–0.33; PAW, 0.24–0.25; TW, 0.29–0.30; PL, 0.12–0.13; PW, 0.20–0.21; PTL, 0.13; PTW, 0.29–0.31; AL, 0.83–0.93; AW 0.39–0.47; GL, 0.20–0.21; and TL, 1.34–1.48.

Body measurements (n = 1), ex *Trogon melanocephalus*: HL, 0.33; PAW, 0.26; TW, 0.31; PL, 0.13; PW, 0.21; PTL, 0.14; PTW, 0.32; AL, 0.91; AW 0.50; GL, 0.19; and TL, 1.46.

Body measurements (n = 2), ex *Trogon collaris*: HL, 0.30–0.31; PAW, 0.23–0.24; TW, 0.29–0.30; PL, 0.11–0.13; PW, 0.19–0.21; PTL, 0.15; PTW, 0.28–0.30; AL, 0.83–0.84; AW 0.39–0.43; GL, 0.18–0.20; and TL, 1.37–1.38.

Female. Habitus as in figure 8. Pigmentation of the head, thorax and abdomen much as for male, differing in body size, terminalia and tergal chaetotaxy. Pterothorax with 5–6 marginal setae on each side. Tergites II–VIII divided medially, IX+X entire and uniformly pigmented. Subgenital plate uniformly pigmented, lacking posterior notch, with 3–4 small setae each side (Fig. 11). Gonapophysis commonly with 3 setae (Figs 12). Vulva with 2–3 short and spiniform setae and 2–3 long and thin setae on each side (Fig. 11).

Body measurements (n = 3), ex *Trogon viridis*: HL, 0.32–0.33; PAW, 0.26; TW, 0.32; PL, 0.12–0.13; PW, 0.21–0.22; PTL, 0.13–0.15; PTW, 0.30–0.31; AL, 0.98–1.07; AW 0.44–0.46; and TL, 1.53–1.61.

Body measurements (n = 2), ex *Trogon melanurus*: HL, 0.34–0.36; PAW, 0.26–0.27; TW, 0.33–0.34; PL, 0.15–0.16; PW, 0.23; PTL, 0.15; PTW, 0.33; AL, 0.98–1.05; AW 0.46–0.47; and TL, 1.56–1.60.

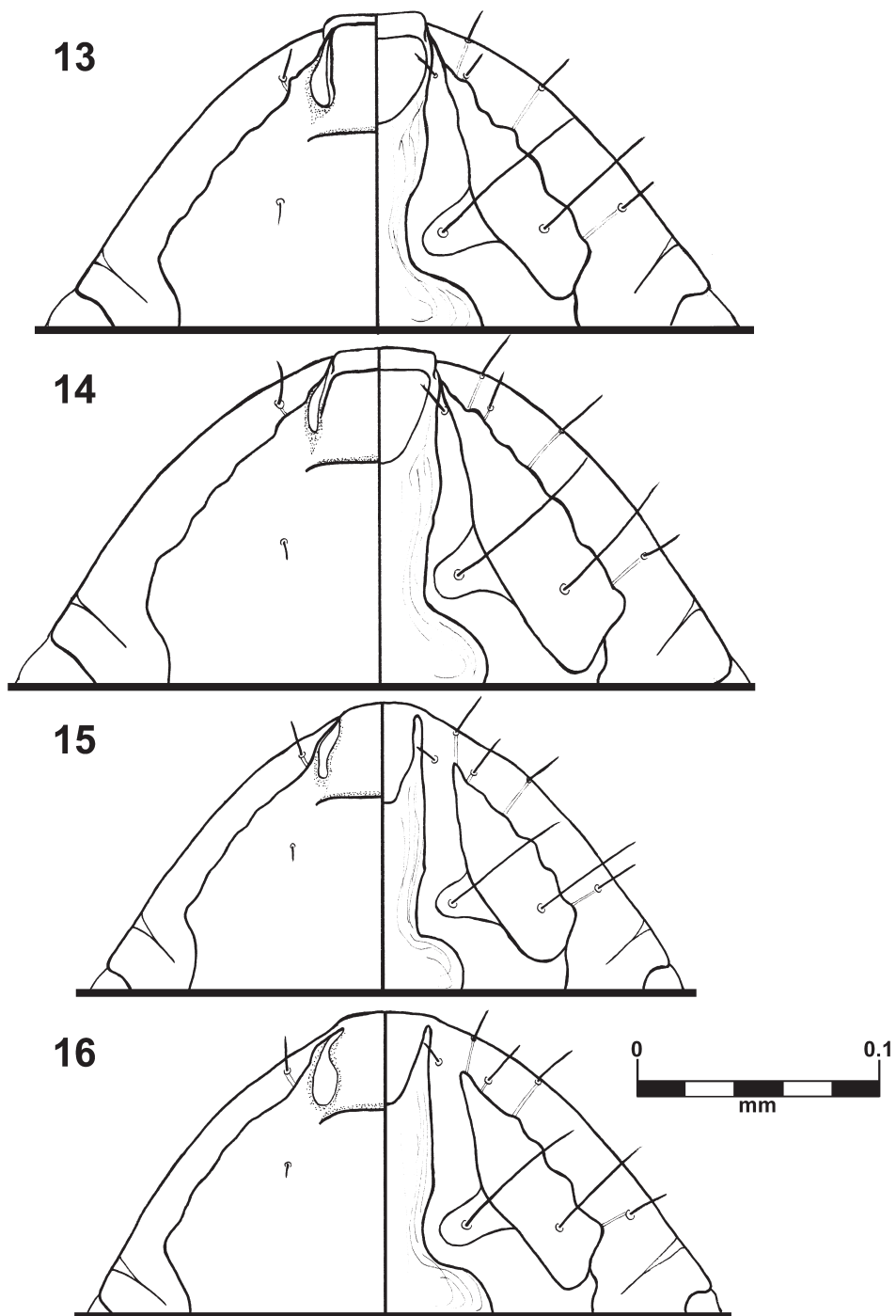
Body measurements (n = 3), ex *Trogon massena*: HL, 0.34; PAW, 0.26–0.28; TW, 0.32–0.33; PL, 0.13; PW, 0.21–0.23; PTL, 0.15–0.16; PTW, 0.32–0.33; AL, 1.01–1.10; AW 0.46–0.47; and TL, 1.59–1.69.

Body measurements (n = 1), ex *Trogon melanocephalus*: HL, 0.35; PAW, 0.27; TW, 0.33; PL, 0.14; PW, 0.22; PTL, 0.14; PTW, 0.34; AL, 1.09; AW 0.49; and TL, 1.68.

Body measurements (n = 3), ex *Trogon collaris*: HL, 0.33–0.34; PAW, 0.26–0.27; TW, 0.32–0.33; PL, 0.13; PW, 0.20–0.22; PTL, 0.14–0.17; PTW, 0.32–0.33; AL, 1.01–1.08; AW 0.48–0.54; and TL, 1.58–1.66.

Type material. Male holotype, ex *Trogon viridis*, JAP765 FMNH 456563; BRAZIL: Amazonas, Maraã, Lago Cumapi (01°43'48.6"S; 65°52'45.5"W), 31.VII.2007, J.D. Weckstein col., at MZUSP. Paratypes: 4 males and 3 females (one female DNA voucher Brsp.Trvi.1.4.2011.20), same data as holotype. 2 males and 1 female (DNA voucher) paratypes at FMNH.

Other specimens studied not regarded as types. 1 male and 1 female (female DNA voucher Brsp.Phpa.4.4.2011.16), ex *Pharomachrus pavoninus*, JAP315 MPEG 62491; BRAZIL: Amazonas, Japurá, Rio Mapari (02°02'31.5"S; 67°17'16.6"W), 17.VII.2007, J.D. Weckstein col., at FMNH; 2 females (one female DNA voucher Brsp.Trme.4.4.2011.13), ex *Trogon melanurus*, AMZ415 MPEG 59344; BRAZIL: Amazonas, Barcelos, Rio Aracá (0°25'12"S; 62°56'13"W), 4.XII.2005, C.C. Ribas col., at MZUSP; 4 males and 4 females (one pair of specimens DNA vouchers Trsp.Trmas.3.29.1999.4 and Trsp.Trmas.4.7.1999.9), ex *Trogon massena*; MÉXICO: Campe-



Figures 13–16. *Brueelia sueta* sp. n.: male preantennal region, dorso-ventral views (13); female preantennal region, dorso-ventral views (14); *Brueelia cicchini* sp. n.: male preantennal region, dorso-ventral views (15); female preantennal region, dorso-ventral views (16).

che, 24 km S Sivituc (18°14' N; 90°12' W), 6.III.1998, D.H. Clayton col., at PIPeR; 1 male and 2 females (one female DNA voucher Trsp.Trmel.5.4.1999.5); ex *Trogon melanocephalus*; MÉXICO: Campeche, 24 km S Sivituc (18°14' N; 90°12' W), 9.III.1998, D.H. Clayton col., at PIPeR; 2 males and 3 females (FMNH-INS 28922, 28923); ex *Trogon collaris*; PERU: Madre de Dios, Hacienda Amazonia, near Atalaya ridged, 330m above hacienda, 5.VIII.1985, D.H. Clayton col. (#85-076 and 85-077), at FMNH.

Etymology. This species is named after Armando C. Cicchino (Universidad Nacional de Mar del Plata, Mar del Plata, Argentina) in recognition of his more than thirty years of contributions to the taxonomy and systematics of the genus *Brueelia* and chewing lice in general.

Remarks. Although we described herein a new *Brueelia* species from *Pharomachrus pavoninus*, this same host species, from a different locality, also harbored *B. cicchinoi* sp. n. Nevertheless, we are certain that this record of *B. cicchinoi* on the host *P. pavoninus* is a reliable host-parasite association because: (1) the pair of *Brueelia* specimens collected from *P. pavoninus* are morphologically identical with those collected from *T. viridis*; (2) both individuals of *P. pavoninus* were collected on different days and at different localities; (3) no *Trogon* spp. were deloused or collected on the day that JDW collected *B. cicchinoi* sp. n. from *P. pavoninus*; (4) specimens of *B. cicchinoi* sp. n. collected from *P. pavoninus* and *T. viridis* are genetically identical (see below); (5) our specimens are only 1 bp different and thus nearly genetically identical to *Brueelia* sp. collected from two other *Trogon* species (see below) collected in México. Lastly, although the type host of *B. cicchinoi* sp. n., *T. viridis* MPEG 62484, was collected in the Amazonian Imerí area of endemism between the Rio Japurá and Rio Negro, we also found *B. cicchinoi* sp. n. on *T. melanurus* MPEG 59344) from the Imerí area of endemism between the Rio Branco and the Rio Negro and on *P. pavoninus* MPEG 62491 from the Napo area of endemism south of the Rio Japurá. Although we do not have a male specimen of *B. cicchinoi* sp. n. from *T. melanurus* we are also certain of this host association because the two specimens studied from *T. melanurus* are morphologically and genetically indistinguishable from those collected from *T. viridis*. Thus, *B. cicchinoi* sp. n. is apparently a relatively widespread trogon parasite found on at least six species of trogons: *Trogon viridis*, *T. melanurus*, *T. collaris*, *T. massena* (see below), *T. melanocephalus* (see below), and *Pharomachrus pavoninus*.

***Brueelia insolita* Cicchino, 1983**

http://species-id.net/wiki/Brueelia_insolita

Brueelia insolita Cicchino, 1983: 284, Figs 7–13; Type host *Trogon mexicanus*; Soloma, Huehuetenango, GUATEMALA.

Trogoninirmus insolitus, Price et al. 2003: 245 (incorrectly included in *Trogoninirmus*).

Diagnosis. This species is readily distinguished from the other species herein described by the size and shape of the male genitalia and the conspicuous central notch present

on the vulvar margin in females. Its head carina and body chaetotaxy are close to that found on *B. cicchinoi* sp. n.

Male body measurements (n=1): HL, 0.34 (0.32); PAW, 0.28 (0.25); TW, 0.33 (0.31); PL, 0.13 (0.12); PW, 0.23 (0.21); PTL, 0.15; PTW, 0.34 (0.33); AL, 0.78 (0.70); AW 0.48 (0.46); GL, 0.26; and TL, 1.34 (1.26).

Female body measurements (n=6): HL, 0.37–0.38 (0.34); PAW, 0.29–0.31 (0.27); TW, 0.36–0.37 (0.33); PL, 0.13–0.15 (0.12); PW, 0.23–0.25 (0.22); PTL, 0.15–0.18 (0.15); PTW, 0.34–0.36 (0.32); AL, 0.99–1.12 (0.94); AW 0.54–0.57 (0.52); and TL, 1.58–1.69 (1.54).

Specimens studied. 1 male and 6 females, ex *Trogon mexicanus*, DB703; GUATEMALA: Huehuetenango, Soloma, 12.IX.1958, D. Baepler col., at PIPeR.

Remarks. Unexpectedly we had the opportunity to discover and analyze specimens from the same lot as those used by Cicchino (1983). As these additional specimens agree completely with the description provided by that author and his description is very precise for recognizing this taxon no redescription is necessary. However the type series of *B. insolita* is based only on a pair of specimens, and thus here we present additional morphometric data for this newly analyzed material. The original measurements provided by Cicchino (1983) for his male *B. insolita* were similar to the measurements of the specimens from PIPeR and his measurements of the female specimen fell within our measurements to two decimals. Cicchino's original measurements are provided in parenthesis.

Discussion

Based on a MP bootstrap analysis of the partial mitochondrial COI sequences, support for the monophyly of trogon *Brueelia* was only 56%. However, all 48 of the MP trees (TL=913, CI=0.36, RI=0.70) indicated that *Brueelia* parasitizing trogons were monophyletic. Furthermore, uncorrected p-distances indicate that the morphologically diagnosable *Brueelia* species, *B. sueta* sp. n. and *B. cicchinoi* sp. n., are differentiated genetically as well. Uncorrected p-distances between them range from 13.4–13.6%, whereas uncorrected p-distances within *B. cicchinoi* sp. n. from the five different host taxa *Trogon viridis*, *T. melanurus*, *T. massena*, *T. melanocephalus*, and *Pharomachrus pavoninus* are extremely small and range from 0–0.3%. *Brueelia cicchinoi* sp. n. from Amazonian *T. viridis*, *T. melanurus*, and *Pharomachrus pavoninus* are identical across 382 bp of COI. However, these three specimens differ by a single bp from the Mexican *Brueelia* sp. from *T. massena* and *T. melanocephalus* sequenced by Johnson et al. (2002). Thus, the similarity of these COI sequences and the morphological features of the *Brueelia* sp. from *T. massena* and *T. melanocephalus* are consistent with these Mexican specimens being *B. cicchinoi* sp. n. as well.

Our data in combination with data published by Johnson et al. (2002) suggests that *B. cicchinoi* sp. n. is a relatively widespread trogon parasite. In addition to parasitizing at least six species of trogons including *Trogon viridis*, *T. melanurus*, *T. collaris*, *T. mas-*

sena, *T. melanocephalus*, and *Pharomachrus pavoninus*, *B. cicchinois* sp. n. is found from North America as far south as Departamento Madre de Dios, Peru and east to eastern Amazonas, Brazil and thus includes the Inambari, Napo, and Imerí Amazonian areas of endemism. This broad louse distribution is extraordinary because it crosses a number of major avian biogeographic barriers including the Andes. In general, the Trogonidae are not long distance migrants, although *Pharomachrus* is a known altitudinal migrant (Collar 2001) and genetic data indicates that widespread trogon taxa such as *T. viridis* are not crossing the Andes (Dacosta and Klicka 2008). Thus the lice are not being carried across these barriers by the birds. However, the distribution of Trogonidae is more or less continuous across the lowlands and highlands of Central and South America, which suggests that perhaps the lack of host specificity of *B. cicchinois* allows it to use a variety of trogon taxa that inhabit different elevations and habitat types (e.g. highlands and dry forest) as a bridge between geographic regions. This might explain the large geographic distribution of this parasite and lack of genetic divergence between individuals in México and Amazonia despite the host taxa having much more limited distributions. Additional collections across the Neotropics will help us to better understand this pattern and the potential process of parasites dispersing while their hosts are relatively sedentary.

Acknowledgments

We thank Alexandre Aleixo (Museu Paraense Emílio Goeldi, Belém, Brazil), Shannon Hackett and John Bates (Field Museum of Natural History, Chicago, USA) for their support and assistance during fieldwork and/or collection of the data presented herein. We also thank Camila Ribas for collecting specimens used in this work and the Field Museum Insect Division including Margaret Thayer, Daniel Summers and James Boone for their advice and access to collections. Petra Sierwald made her NSF PEET funded microscope available for our use. Dale Clayton and Sarah Bush provided access to mounted specimens at the University of Utah, PiPeR collection. This work was supported in part by the CNPq (Conselho Nacional de Desenvolvimento Científico e Tecnológico, Brazil) with a postdoctoral fellowship 200453/2010-6 to MPV, NSF DEB-0515672 and DEB-1120054 to JDW, and the Field Museum's Emerging Pathogens Project, funded by the Davee Foundation and the Dr. Ralph and Marian Falk Medical Research Trust. DNA sequencing was carried out at the Field Museum's Pritzker Laboratory for Molecular Systematics and Evolution, operated with support of the Pritzker Foundation.

References

- Bueter C, Weckstein JD, Johnson KP, Bates JM, Gordon CE (2009) Comparative phylogenetic histories of two louse genera found on *Catharus* thrushes and other birds. *Journal of Parasitology* 95(2): 295–307. doi: 10.1645/GE-1642.1

- Cicchino AC (1983) Especies nuevas o poco conocidas del género *Brueelia* Kéler, 1936 (Mallophaga: Philopteridae) parásitas de Passeriformes, Piciformes y Trogoniformes (Aves) Americanos. *Revista de la Sociedad Entomologica Argentina* 42(1–4): 283–303.
- Cicchino AC, Castro DDC (1996) Revisión preliminar de las especies del género *Brueelia* Kéler, 1936 (Phthiraptera, Philopteridae) parásitas de Icterinae (Aves, Passeriformes, Fringillidae). *Graellsia* 52: 3–30.
- Collar N (2001) Family Trogonidae (Trogons). In: del Hoyo J, Elliot A, Sargatal J (Eds) *Handbook of the Birds of the World*, Lynx Edicions, Barcelona, 80–129.
- Dacosta JM, Klicka J (2008) The Great American Interchange in birds: a phylogenetic perspective with the genus *Trogon*. *Molecular Ecology* 17(5): 1328–1343. doi: 10.1111/j.1365-294X.2007.03647.x
- Dickinson EC (2003) *The Howard & Moore Complete Checklist of the Birds of the World*. 3rd Ed. Princeton, Princeton University Press, 1039 pp.
- Johnson KP, Adams RJ, Clayton DH (2002) The phylogeny of the louse genus *Brueelia* does not reflect host phylogeny. *Biological Journal of the Linnean Society* 77(2): 233–247. doi: 10.1046/j.1095-8312.2002.00107.x
- Palma RL (1978) Slide mounting of lice: a detailed description of the Canada Balsam technique. *New Zealand Entomologist* 6(4): 432–436.
- Price RD, Hellenthal RA, Palma RL (2003) World checklist of chewing lice with host associations and keys to families and genera. In: Price RD, Hellenthal RA, Palma RL, Johnson KP, Clayton DH. *The chewing lice: world checklist and biological overview*. Illinois Natural History Survey Special Publication 24: 1–448.
- Swofford DL (2003) PAUP*: *Phylogenetic analysis using parsimony* (*and other methods), version 4. Sinauer, Sunderland, Massachusetts.