

Research Article

Shrinkage of Prostate and Improved Quality of Life: Management of BPH Patients with *Croton membranaceus* Ethanolic Root Extract

George Awuku Asare,¹ Daniel Afriyie,² Robert A. Ngala,³
Alfred A. Appiah,⁴ Yvonne Anang,^{1,3} Iddi Musah,² Samuel Adjei,⁵
Kwabena Bamfo-Quaicoo,⁶ Derick Sule,⁶ Ben A. Gyan,⁵
Peter Arhin,⁷ and Dominic A. Edoh⁴

¹Department of Medical Laboratory Sciences, University of Ghana School of Biomedical and Allied Health Sciences, Korle Bu, Accra, Ghana

²Ghana Police Hospital, Cantonment, Accra, Ghana

³Department of Molecular Medicine, Kwame Nkrumah University of Science and Technology, Kumasi, Ghana

⁴Center for Plant Medicine Research, Mampong, Akuapem, Ghana

⁵Noguchi Memorial Institute for Medical Research, University of Ghana, Accra, Ghana

⁶Department of Radiography, School of Biomedical and Allied Health Sciences, University of Ghana, Accra, Ghana

⁷Traditional and Alternative Medicine Council, Ministry of Health, Accra, Ghana

Correspondence should be addressed to George Awuku Asare; gasare@chs.edu.gh

Received 17 December 2014; Revised 13 February 2015; Accepted 23 February 2015

Academic Editor: Menachem Oberbaum

Copyright © 2015 George Awuku Asare et al. This is an open access article distributed under the Creative Commons Attribution License, which permits unrestricted use, distribution, and reproduction in any medium, provided the original work is properly cited.

Benign prostatic hyperplasia (BPH) is an enlargement of the prostate. The study aimed at validating the use of freeze-dried *Croton membranaceus* ethanolic root extract for BPH management. Thirty-three patients were observed before and after 3-month administration of 20 mg t.i.d orally. The International Prostate Symptom Score (IPSS), and the International Index of Erectile Function (IIEF) questionnaires were used. Total/free PSA (tPSA, fPSA), renal, liver function, lipid tests, and ultrasonographic imaging were performed. Thirty (30) patients (66 ± 11 years) completed the study. IPSS results showed 37% had severe, 40% moderate, and 23% mild symptoms before; 57% and 43% had moderate and mild symptoms, respectively, after treatment. IIEF of patients' results showed 30% with severe, 40% moderate, 24% mild-moderate, 3% mild, and 3% no erectile dysfunction before treatment and 20% severe, 43% moderate, and 37% mild-moderate dysfunction, after treatment. Quality of life (QoL) improved ($P = 0.001$). Significant but non-pathological increases in total and indirect bilirubin as well as apolipoprotein A occurred. Mean tPSA reduced from 27.9 ± 19.0 to 16.2 ± 11.8 ng/mL ($P = 0.002$); fPSA from 6.1 ± 4.8 to 3.9 ± 2.9 ng/mL ($P = 0.045$); and prostate volume from 101.8 ± 41.3 to 54.5 ± 24.8 cm³ ($P = 0.023$). *C. membranaceus* shrinks the prostate and improves QoL.

1. Introduction

BPH is an enlargement of the prostate gland from progressive hyperplasia or abnormal growth of cells of glandular epithelial and stromal cells [1, 2]. Commonly experienced symptoms include inability to delay urination, incomplete emptying of the bladder, frequent urination during the day and night, weak urine stream, incontinence, and painful or bloody urination [3].

Globally, it has been documented that more than 80% of men by the age of 80 years will suffer from BPH [4]. Although BPH has a wide variety of treatment options from surgical to complementary alternative medicine (CAM), the high urologist to patient ratio, as well as socioeconomic problems that plaque developing economies, tend to drive the majority of the BPH patients towards dependency on CAM as the first line of medical relief. Indeed, CAM and the use of medicinal

plants appear to be increasing worldwide. Furthermore, most men are reluctant to opt for surgical interventions for fear of losing potency and the perception of other adverse side effects. The use of 5 α -reductase inhibitors and α -1 blockers for BPH management has side effects including erectile dysfunction (ED) [5, 6]. Against this background, subjects suffering from BPH appreciably resort to CAM, with as much as 90% of men in Austria and Germany depending on phytotherapy [7].

The role of phytotherapy in the health care delivery system is increasing. It is estimated that the global market for medicinal plants is worth over \$250 billion [8]. Although the economic data does not exist in Ghana, medicinal plant pervoyeurs as well as their clients have increased. BPH patients in Ghana resort to the use of medicinal plants or a combination of medicinal plants and radiotherapy [9].

Traditional pharmacologic therapies although widely used must be assessed for a favorable risk-benefit ratio. One such plant that has been studied over three decades in Ghana is *Croton membranaceus* Mull. Arg. (Euphorbiaceae). This plant is mostly available in three west African countries, namely, Ghana, Nigeria, and Niger. In Ghana the plant is mostly found in the Krobo-Gyakiti forest reserve area in the Eastern Region. The root preparation of this medicinal plant has been dispensed to BPH patients at the Center for Plant Medicine Research (a WHO Center) for the past 30 years [10].

The root extract is said to contain an alkaloid, a coumarin, diterpenoids, and phytosterols [11–14]. Compounds isolated from the root extract include julocrotine, scopoletin, DL-threitol, crotomembranofuran, gomojoside H, larixol, β -sitosterol, β -sitosterol-3-O-glucoside, stigmasterol, and campessterol. Furthermore, N[N-(2-methylbutanoyl) glutaminoyl]-2-phenylethylamine has recently been isolated [15]. The crude ethanol extract of *C. membranaceus* and julocrotine possess 5- α -reductase inhibitory activity [11]. 5- α -reductase inhibitory activity is the underpinning mechanism for the application of finasteride for the treatment of BPH. BPH treatment with the aqueous root extract alongside finasteride demonstrating similar efficacy as finasteride has been reported in an animal model of BPH [16]. Furthermore, the antiproliferative activity of *C. membranaceus* on BPH-1 cells has been demonstrated [17]. Additionally, the cytotoxic activity of the methanolic extract of *C. membranaceus* roots has been shown against DLD-1 and MCF-7 cells. Finally, the aqueous root extract of the plant is nontoxic [18]. However, no published data exist on its effect on human BPH patients. This study aimed at observing the socioscientific markers of BPH patients opting for the use of the ethanolic extract of *C. membranaceus*.

2. Materials and Methods

2.1. Plant Extract. *C. membranaceus* roots were harvested from the forest area of the Eastern Region of Ghana to minimize the presence of contaminating herbicides and pesticides. The root product was carefully extracted with ethanol according to the protocol of Appiah [10]. Possible variation of content from batch to batch was averted by bulk harvest

and fingerprinting. The extract was carefully checked for putative active ingredient(s) using chemical and biological parameters. Analyses for lack of contamination by pesticides, herbicides, heavy metals, microbes, and toxins were carried out as part of the quality control procedures. The Center for Plant Medicine Research (Mampong-Akuapem) further processed the freeze-dried extract into capsules (10 mg per capsule) under strict quality control procedures, with a recommended dose of 2 capsules t.i.d. The product has been registered with the Food and Drug Authority (FDA) Ghana as URO 500 after satisfying the FDA's requirement.

2.2. Experimental Site. Eleven (11) centers nationwide have been allowed by the Ministry of Health, Ghana, to serve well-tested and prepared medicinal plants products, alongside orthodox drugs. The Ghana Police Hospital, Accra, which was established in 1970 is a medium-size hospital with 100 beds. The hospital is currently undergoing expansion into an ultramodern 400-bed facility. It serves as one of the centers currently approved by the Ministry of Health to administer medicinal plant products alongside orthodox medicine. The center was therefore selected for this study.

2.3. Patients. The study obtained ethical clearance from the University of Ghana School of Biomedical and Allied Health Sciences, with ethics clearance number SAHS-ET/SAHS/PSM/ML/09/AA/26A/2012-2013 for an observational study to be conducted. The study complied with the Helsinki Declaration of 1964, with revision in October 2008. Patients opting for the use of the herbal remedy and who were willing to be part of the study were given informed consent forms. Forms were duly filled and the group formed the cohort. Patients were between the ages of 50 and 72 years. Furthermore, patients came from all walks of life; however, most of them were from the capital city of Ghana, Accra, with few from Togo and Nigeria. The cohort of 33 patients who opted for phytomedicine was not on any other medication for BPH management. Furthermore, these patients were under medical supervision of the urologist on the protocol development team. Patients were advised to carefully note any adverse effects and immediately report such, using the hotline provided.

2.4. Research Instruments. Four main research instruments were employed. The first was the International Prostate Symptom Score (IPSS) questionnaire followed by the second, the International Index of Erectile Function (IIEF) questionnaire. The third research instrument was blood sampling for routine and special biochemical tests and the last, abdominopelvic ultrasonography. Research instruments were employed before and after 3 months of treatment.

2.4.1. IPSS Questionnaire. The IPSS is constructed on answers to seven questions concerning urinary symptoms and one question concerning QoL. Each question concerning symptoms in passing urine allowed the patient to choose 1 out of 6 answers representing increasing severity of a particular symptom. The answers were assigned points from 0 to 5, with

5 signifying worsening symptoms. The total score therefore ranged from 0 to 35 (asymptomatic to very symptomatic). Symptoms were graded alongside the following: incomplete emptying, frequency, intermittency, urgency, weak stream, straining and nocturia. These first 7 questions of the IPSS were identical to the questions appearing on the American Urological Association (AUA) Symptom Index. The eighth question dealt with the patient's perceived QoL and was scored 0–6, with 6 representing a terrible quality of life. Computed results were categorized as follows: mild (symptom score less than or equal to 7), moderate (symptom score range 8–19), and severe (symptom score range 20–35).

2.4.2. IIEF Questionnaire. IIEF was based on the effects of erectile problems on one's reproductive health life over the past 4 weeks. The 15-point questionnaire finally categorized answers into broad areas of erectile function, orgasmic function, sexual desire, intercourse satisfaction, and overall satisfaction. Clinical interpretation ranged from the lowest score (no dysfunction) to the highest (severe dysfunction).

2.4.3. Biochemical Assays. Five milliliters (5 mL) of blood samples was obtained from the patients before and after treatment for various blood tests as part of the urologist's request. Blood examinations were of two categories: routine examinations and special examinations.

(1) Routine Examinations. Renal function test (RFT), liver function test (LFT), and the lipid profile were performed. RFT was made up of urea, creatinine, Na^+ , and K^+ . LFT comprised total-direct and indirect bilirubin (TBIL, DBIL, and IND BIL, resp.), aspartate transaminase (AST), alanine transaminase (ALT), gamma-glutamyl transferase (GGT), alkaline phosphatase (ALP), total protein (TP), and albumin (ALB). Total cholesterol (TC), triglyceride (TG), high density lipoprotein cholesterol (HDL), low density lipoprotein cholesterol (LDL), and apolipoproteins A and B made up the lipid profile. LDL was calculated using Friedewald's equation ($[\text{LDL-cho}] = [\text{Total chol}] - [\text{HDL-cho}] - ([\text{TG}]/2.2)$). All routine examinations were performed using the Vitros 5, IFS Chemistry analyzer (New York, USA).

(2) Special Examinations. Free and total PSA (fPSA and tPSA, resp.) were performed using Accu-Bind free and total PSA ELISA kits were purchased from Monobind Inc. (California, USA). The tests were performed according to the manufacturer's instructions. In brief, serum samples were added alongside standards to a highly specific monoclonal anti-PSA antibody coated onto the surface of wells. After the first wash, an antibody-HRP enzyme conjugate was applied to form a sandwich complex on the well surface. Excess reagents were washed off followed by the addition of 3,3',5,5'-tetramethylbenzidine (TMB)/hydrogen peroxide (substrate) to react with the HRP. After stopping the reaction with sulfuric acid, the final chromogen was then read at 450 nm using a microplate reader. PSA ratio was calculated as fPSA/tPSA in %.

2.4.4. Abdominopelvic Scan. The SonoScape Digital Colour Doppler Ultrasound System 551–6000 (Shenzhen, China) was used. Patients were asked to drink approximately 1.5 L of water and allowed to wait for 1–2 hours before the scan was performed. The purpose of this preparation was to get the urinary bladder filled with urine so as to act as an acoustic window through which the prostate could better be visualized. Patients were then positioned on the ultrasound couch. With the pelvic area exposed, a liquid gel was applied on the probe surface to improve the contact between the patient's skin and the probe surface. The prostate volume and bladder volume at full capacity were obtained. After the scanning procedure, patients were then asked to void urine after which a second scan to determine the postvoid residual volume of the urinary bladder was performed.

2.5. Statistical Analysis. Data for the study was analyzed using Graphpad Prism 6.01. Student's *t*-test for paired data was performed. Descriptive statistics was presented as mean \pm SD. Pearson's correlation analysis was performed to determine associations.

3. Results

3.1. Demographic Data. In all, 30 clinically diagnosed BPH patients attending the urology and phytomedicine clinics with an average age of 66 ± 11 years completed the 3-month observational study. 3 others were excluded for noncompliance. No report of adverse effects was registered by any of the patients during the study. However, one diabetic patient reported improved glycemic index which further supports our unpublished data of possible hypoglycemic effect of *C. membranaceus*.

3.2. IPSS. IPSS relates to the degree of BPH or prostate cancer symptoms experienced. Only BPH patients were used for the study. Thirty-seven percent (37%) of the patients had severe prostate symptoms, 40% moderate symptoms, and 23% mild symptoms before treatment with *C. membranaceus* root extract. Fifty-seven (57%) and 43% of the patients had moderate and mild symptoms, respectively, after treatment. However, there was no patient with severe prostate symptom after treatment.

IPSS improved significantly from 15.1 ± 8.7 units to 10.3 ± 4.7 units, signifying improved symptoms. The decrease was significant ($P = 0.005$). Additionally, QoL improved and this was highly significant ($P = 0.001$) (Table 1). Overall, prostate symptom score indicated that severe symptoms disappeared after treatment, while mild and moderate symptoms increased (Figure 1). In general, 33% of the patients recruited for this study were happy about their state of health before treatment while 67% of them were unhappy. After treatment, 83% were happy about their present state of health while 17% remained unhappy. A negative correlation between QoL and age was observed after treatment, although this was not significant (Figure 2). Furthermore, total IPSS did not significantly depend on age (Figure 3) or tPSA levels (Figures 4 and 5).

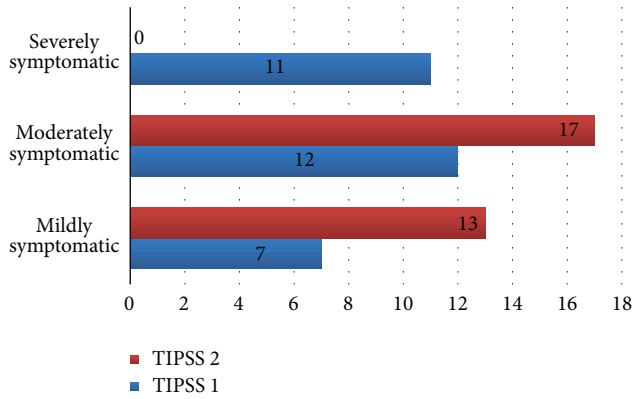


FIGURE 1: A diagram showing the prostate symptom score (IPSS) before and after 3 months of plant extract administration.

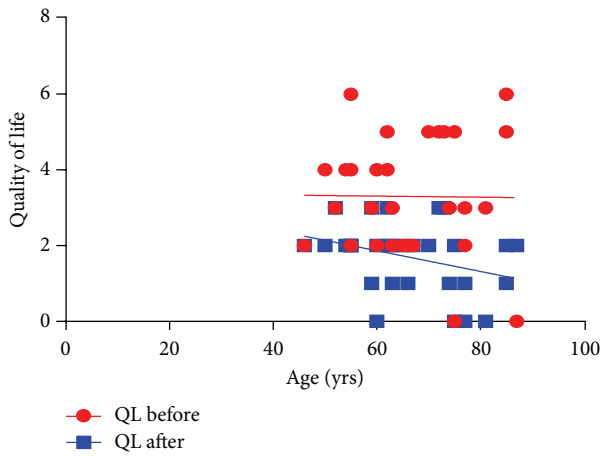


FIGURE 2: A relationship between age and QoL before (b) and after (a) treatment. r (b) = -0.010, r (a) = -0.330 and P value (b) = 0.956, P value (a) = 0.075.

TABLE 1: Table showing prostate symptom score, sexual function, and quality of life in BPH patients after three (3) months of *C. membranaceus* ethanolic root extract administration at 20 mg t.i.d.

Parameter	Mean \pm SD (before)	Mean \pm SD (after)	P value
Age (yrs)	66.0 \pm 11.0		
Total IPSS	15.1 \pm 8.7	10.3 \pm 4.7	0.001*
Erectile function	10.0 \pm 6.0	9.7 \pm 4.1	0.751
Orgasmic function	2.6 \pm 2.5	2.9 \pm 2.4	0.620
Sexual desire	5.9 \pm 2.5	5.0 \pm 2.1	0.053
Intercourse satisfaction	3.8 \pm 3.2	4.6 \pm 2.5	0.154
Overall satisfaction	5.2 \pm 3.6	4.8 \pm 2.9	0.598
Quality of life	3.3 \pm 1.6	1.7 \pm 0.9	0.001*

*Significance at 95% confidence interval.

3.3. *IIED*. Thirty percent (30%) of the patients had severe erectile dysfunction, 40% moderate dysfunction, 24% mild-moderate dysfunction, 3% mild dysfunction, and 3% no dysfunction before treatment. After treatment, 20% of the

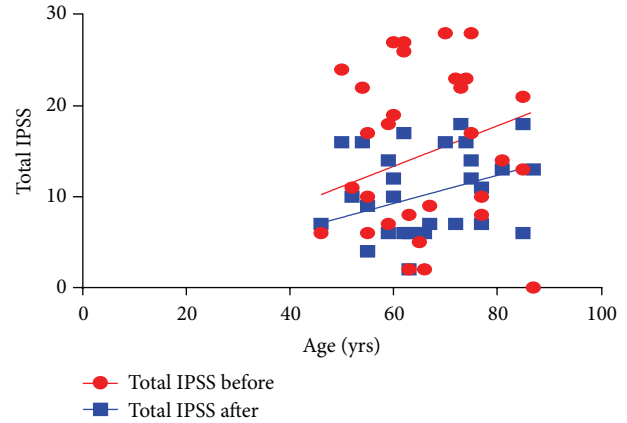


FIGURE 3: A relationship between age and IPSS before (b) and after (a) treatment. r (b) = 0.005, r (a) = 0.247 and P value (b) = 0.981, P value (a) = 0.189.

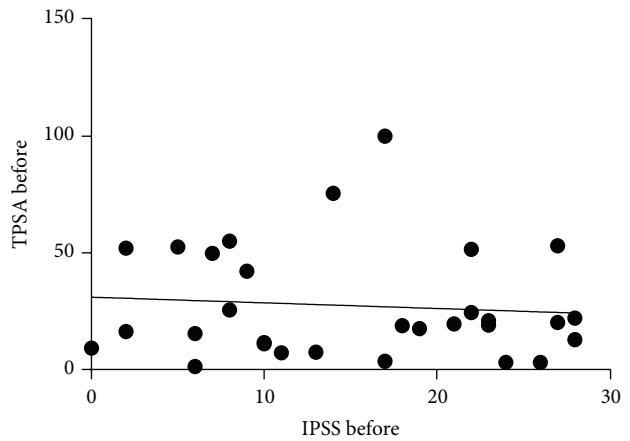


FIGURE 4: A correlation between tPSA and IPSS before treatment. r = -0.089, P value = 0.640.

patients had severe erectile dysfunction, 43% moderate, and 37% mild-moderate dysfunction. No patient had mild dysfunction or no dysfunction after treatment.

With regard to orgasmic dysfunction, 53% had severe orgasmic dysfunction, 27% moderate, 13% mild-moderate 4% mild and 3%, no dysfunction before treatment. After treatment, 37% had severe orgasmic dysfunction, 57% moderate, 3% mild-moderate, 0% mild and 3%, no dysfunction.

Patients with severe dysfunction in sexual desire formed 6%. Twenty percent (20%), 37%, 27%, and 10% had moderate, mild-moderate, mild, and no dysfunction in sexual desire, respectively, before treatment compared to 10% severe, 27% moderate, 50% mild-moderate 6% mild, and 7% no dysfunction, after treatment. Additionally, 40% of the patients had severe dysfunction, 33% moderate, 24% mild-moderate 3% mild, and 0% no dysfunction in intercourse satisfaction before treatment. After treatment, 23% had severe dysfunction, 67% moderate 7% mild-moderate, 3% mild dysfunction, and 0% no dysfunction.

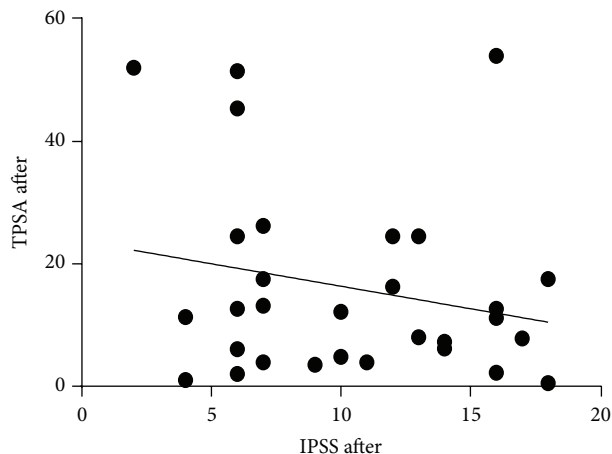


FIGURE 5: A correlation between tPSA and IPSS after treatment. $r = -0.221$, P value = 0.239.

With the patient's assessment on overall sexual satisfaction, 27% had a severe dysfunction, whilst 17%, 17%, 23% and 16% of the rest of the patients had moderate, mild-moderate, mild and no dysfunction after treatment. Severe ED decreased with an increase in moderate symptoms (Figure 6). Furthermore, severe orgasmic dysfunction decreased after treatment with an increase in moderate dysfunction. With regard to sexual desire, mild to moderate dysfunction increased after treatment. Severe and mild to moderate intercourse satisfaction dysfunction decreased while moderate dysfunction increased. Severe dysfunction of overall satisfaction decreased, with an increase in mild and no dysfunction (Figure 6). Furthermore, there was a significant positive association between the QoL and IPSS before treatment ($P = 0.002$) (Figure 7). IPSS decreased after treatment with stable QoL (Figure 8).

In terms of age, as age increased overall satisfaction with "prostate health" decreased. This correlation however no longer existed after treatment (Figure 8). Correlation between ED and age indicated that ED was no longer age-dependent after treatment and had improved (Figure 9). Other insignificant associations with age occurred for sexual desire, intercourse satisfaction. However, overall satisfaction which was significantly age-dependent before treatment was no longer a factor after treatment (Figure 10).

3.4. Biochemical Results

3.4.1. Routine Examinations. From Table 2, RFT remained relatively unchanged after the 3-month study. All LFT parameters increased slightly except for ALP that decreased slightly but insignificantly. However, significant increases were observed in TBIL and IND BIL ($P = 0.001$, $P = 0.001$, resp.) (Table 3). The lipid profile remained virtually unchanged except for APO A that increased significantly ($P = 0.025$) (Table 4).

3.4.2. Special Examinations. From Table 5, total PSA (tPSA) reduced significantly from 27.9 ± 19.0 to 16.2 ± 11.8 ng/mL

TABLE 2: A table showing renal function test (RFT) before and three (3) months after administration of *C. membranaceus* ethanolic root extract at 20 mg t.i.d.

Parameter	Mean \pm SD (before)	Mean \pm SD (after)	P value
Sodium (mmol/L)	142.8 \pm 6.6	142.2 \pm 6.6	0.672
Potassium (mmol/L)	4.3 \pm 0.6	4.3 \pm 0.6	0.609
Urea (mmol/L)	4.3 \pm 1.4	4.4 \pm 1.3	0.664
Creatinine (μ mol/L)	105.9 \pm 26.5	106.0 \pm 26.2	0.981

TABLE 3: A table showing liver function test (LFT) before and three (3) months after *C. membranaceus* ethanolic root extract administration at 20 mg t.i.d.

Parameter	Mean \pm SD (before)	Mean \pm SD (after)	P value
AST (U/L)	17.8 \pm 4.4	18.6 \pm 5.1	0.391
ALT (U/L)	16.9 \pm 6.5	17.9 \pm 5.7	0.465
GGT (U/L)	34.9 \pm 15.3	35.8 \pm 19.2	0.729
ALP (U/L)	76.6 \pm 52.3	68.8 \pm 20.6	0.441
TP (g/L)	74.4 \pm 6.9	75.3 \pm 9.0	0.495
ALB (g/L)	44.2 \pm 4.8	46.0 \pm 7.2	0.092
TBIL (μ mol/L)	4.9 \pm 2.6	8.3 \pm 4.7	0.001*
DBIL (μ mol/L)	2.9 \pm 2.2	3.4 \pm 2.5	0.347
IND BIL (μ mol/L)	2.0 \pm 1.8	4.8 \pm 4.5	0.001*

*Significance at 95% confidence interval.

TABLE 4: A table showing serum lipid levels before and three (3) months after *C. membranaceus* ethanolic root extract administration at 20 mg t.i.d.

Parameter	Mean \pm SD (before)	Mean \pm SD (after)	P value
TC (mmol/L)	5.03 \pm 1.12	5.19 \pm 1.15	0.423
TG (mmol/L)	1.15 \pm 0.43	1.22 \pm 0.56	0.518
HDL (mmol/L)	0.76 \pm 0.33	0.88 \pm 0.32	0.063
LDL (mmol/L)	3.74 \pm 1.03	3.75 \pm 1.02	0.959
APO A (g/L)	1.31 \pm 0.45	1.51 \pm 0.47	0.025*
APO B (g/L)	0.58 \pm 0.37	0.49 \pm 0.13	0.222
APO B/A ratio	2.81 \pm 1.47	3.24 \pm 1.27	0.067

*Significance at 95% confidence interval.

($P = 0.002$). Furthermore, free PSA (fPSA) reduced from 6.1 ± 4.8 to 3.9 ± 2.9 ng/mL ($P = 0.045$). However, PSA ratio did not significantly change.

3.5. Abdominopelvic Scan. Data from the abdominopelvic scan showed that mean prostate volume reduced from 101.8 ± 41.3 to 54.5 ± 24.8 cm³. The change over the 3-month period was significant ($P = 0.023$).

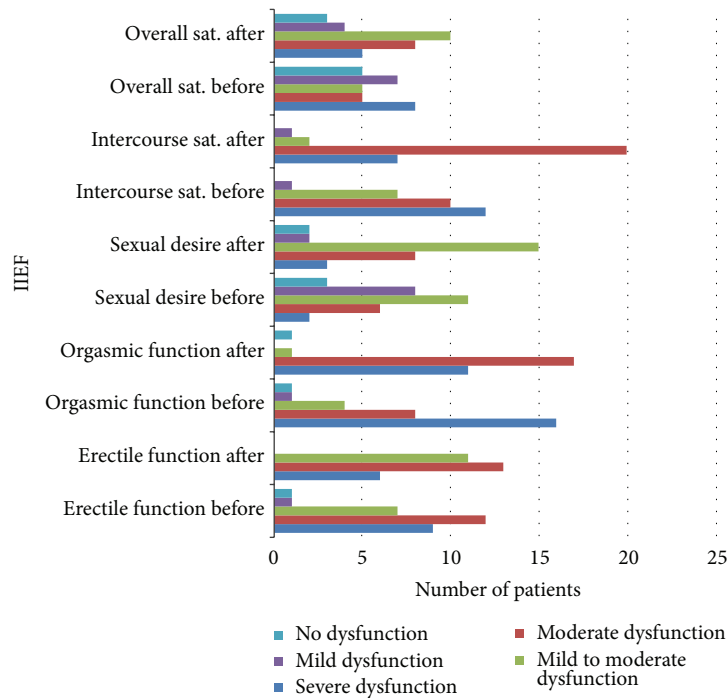


FIGURE 6: A diagram showing the general overview of patient’s condition before and after treatment using the IIEF questionnaire.

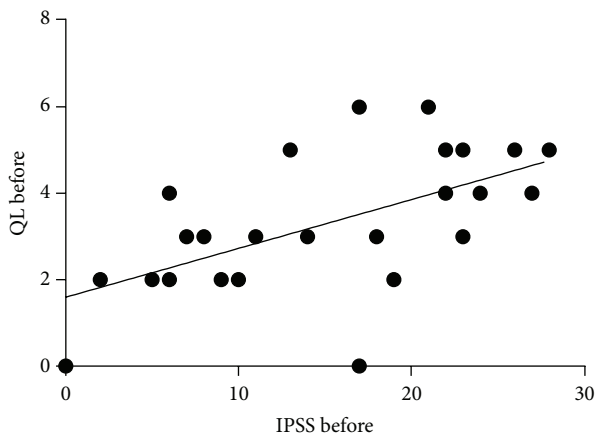


FIGURE 7: A correlation between QoL and IPSS before treatment. QoL before treatment strongly depended on IPSS. $r = 0.634$, P value = 0.002.

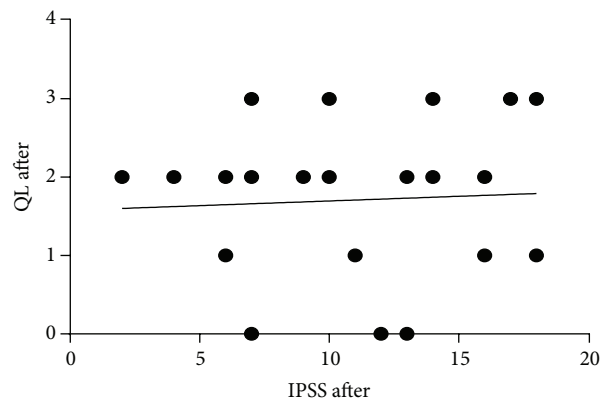


FIGURE 8: A correlation between QoL and IPSS after treatment. QoL appear to be stable and not dependent on IPSS. $r = 0.061$ and $P = 0.747$.

TABLE 5: Table showing the different levels of total PSA (tPSA), free PSA (fPSA), PSA ratio, and prostate volume before and after three (3) months of administration of *C. membranaceus* ethanolic root extract at 20 mg t.i.d.

Parameter	Mean ± SD (before)	Mean ± SD (after)	P value
Total PSA (ng/mL)	27.4 ± 19.0	16.2 ± 11.8	0.002*
Free PSA (ng/mL)	6.1 ± 4.8	3.9 ± 2.9	0.045*
PSA ratio (%)	23.9 ± 18.7	24.6 ± 16.4	0.813
Prostate volume (cm ³)	101.8 ± 41.3	54.5 ± 24.8	0.023*

*Significance at 95% confidence interval.

4. Discussion

BPH continues to be a major problem worldwide. While new pharmaceutical drugs are being sought for, a gradual but substantive shift to nutraceuticals and medicinal plants is occurring globally. Medicinal plants are being used by 80% of the world’s population. In emerging economies, it is the first line of medical support. Nonetheless in some advanced economies like Germany and Austria 90% use phytotherapeutic agents [7]. The drive towards the use of phytotherapeutic agents is a decision based on safety and side effects. Most medicinal plants have been used for ages and are considered safe with fewer side effects.

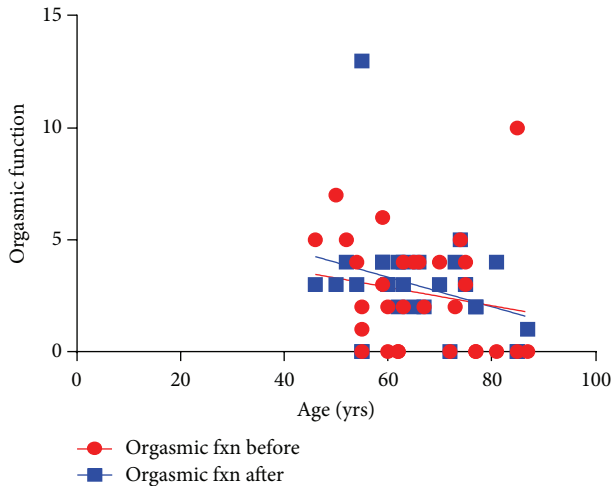


FIGURE 9: A relationship between age and orgasmic function before (b) and after (a) treatment. Orgasmic function remained relatively unchanged. Before $r = -0.179$, $P = 0.344$; after $r = -0.303$, $P = 0.103$.

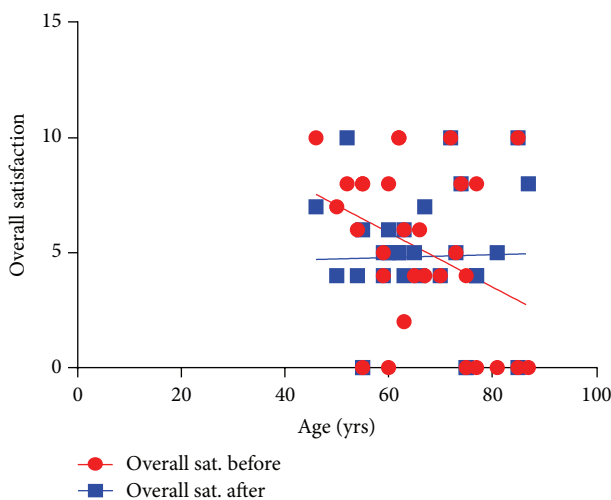


FIGURE 10: A relationship between age and the overall patient satisfaction before (b) and after (a) treatment. Overall satisfaction was determined by age before treatment. This no longer existed after treatment. Overall satisfaction appears to have stabilized. Before $r = -0.364$, $P = 0.048$ and after $r = 0.024$, $P = 0.901$.

C. membranaceus aqueous root extract has been used in Ghana for decades for BPH treatment. The last decade has however witnessed a surge in scientific data on the effect of *C. membranaceus* *in vitro* and *in vivo* (animal studies).

Animal studies using normal Sprague-Dawley (S-D) rats demonstrated shrinking of the prostate and reduction in epithelial cells upon *C. membranaceus* administration [19]. Further to this, BPH models (S-D rats) also demonstrated prostate volume and prostatic index reduction in *C. membranaceus* treated rats alongside a finasteride positive control [16, 20]. Having obtained positive results in the aforementioned studies, it was incumbent to further demonstrate evidence of effectiveness to back anecdotal claims.

Improvement of urinary symptoms and QoL are important issues for decision making in the management of BPH. Clinical symptoms of BPH can be categorized into obstructive or irritative symptoms. The former is associated with the narrowing of the prostatic urethra with subsequent difficulty in passing urine or weak or trickling stream of urine, while the latter relates to sensation of incomplete bladder emptying, urgency, nocturia, and pollakiuria. Both categories affect the QoL. IPSS is a patient's assessment index used to rank severity of symptoms and QoL [21].

The IPSS questionnaire has been used extensively in many phytotherapeutic studies. Some polyherbal products have been documented to improve IPSS. *Chimaphila umbellata*, *Populus tremula*, *Pulsatilla pratensis*, *Equisetum arvense*, *Triticum aestivum* [22] and *Chimaphila umbellata* (L.) Barton, *Populus tremula*, *Pulsatilla pratensis* (L.) Mill., *Equisetum arvense* L., and *Triticum aestivum* L [23] are made up of 5 polyherbal plants. Others like *Serenoa repens* (Bartram) Small/*Urtica dioica* L are biherbal preparations [24, 25]. Both the polyherbal and biherbal preparations have been documented to reduced IPSS. A few monoherbal plants have reduced IPSS. These include *Serenoa repens* Bartram [34], *Urtica dioica* L. [27], and *Pteris multifida* [28]. In the present study *C. membranaceus* ethanolic root extract (a monoherbal preparation) showed a significant reduction in total IPSS of the subjects at the end of the study period ($P = 0.001$). Furthermore, QoL improved significantly ($P = 0.001$). Admittedly, BPH symptoms impeach on QoL of subjects. This improvement was not age related (Figure 7). Additionally, a significant change in QoL was noticed. Although other factors in the IPSS questionnaire such as erectile function, sexual desire, and overall satisfaction improved, changes were not significant. However, overall satisfaction was significantly higher in younger men, and age differences did not exist after treatment. On the down side, orgasmic function and overall intercourse satisfaction were slightly worse (Table 1). Intercourse satisfaction is perhaps an age related perception as older men showed less satisfaction before treatment than younger men. However, some degree of improvement seen was largely due to the reduction in severe dysfunction related to intercourse (Figure 9). It appears that *C. membranaceus* primarily targets only the prostate without adverse effects on sexual function. This is of interest since 5- α -reductase inhibitors and α -1-adrenoceptor blockers affect erectile function. The improved QoL and IPSS may largely therefore be related to relief of symptoms. It is worthy to note that sexual desire after treatment was almost significant. This will need further investigations to determine whether *C. membranaceus* possess some aphrodisiac properties.

Severe ED, however, dropped after treatment (Figure 6). Further support to this is the fact that severe lower urinary tract symptoms (LUTS) disappeared after 3 months with a corresponding increase in those with mild and moderate symptoms (Figure 6). The improvement could be attributed to improved urination although such directly related parameters were not measured. *Vaccinium macrocarpon* Aiton is an example of a monoherbal plant that demonstrated improved LUTS after administration of its extract [29]. Further evidence of improved IPSS is accompanied by reduced PSA

levels. Most medicinal plant studies (in animals and humans) did not measure PSA after the treatment period. However, Engelhardt and Riedl reported a significant decrease in IPSS and PSA after one-year isoflavone extract from red clover [30]. This study also reports not only improved IPSS but also significant reduction in both tPSA and fPSA (Table 2).

Total PSA is the sum of both bound and free PSA; however, free PSA is assessed only if the total PSA is increased. PSA is primarily a tissue-specific marker. From an elevated PSA measurement, it is difficult to distinguish between a benign and malignant transformation of the prostate gland. Differentiating between the two is where free PSA is useful. Free PSA is more often formed from benign transformations while bound PSA tends to come from malign transformations [31]. In this study both fPSA and tPSA were found to be significant. However, the ratio was not significant before and after treatment. Collectively, the free:total PSA ratio can be used as an additional marker for prognosis of hormone treatment [32].

Total and indirect (unconjugated) bilirubin levels significantly increased in this study. However levels were within the normal reference interval. Such physiological increases are beneficial and bilirubin has been demonstrated to be an effective antioxidant using isolated heart mitochondria [33].

Apolipoprotein A-I is the major protein component of high density lipoprotein (HDL) in plasma. Chylomicrons secreted from the intestinal enterocyte also contain apo A-I, but it is quickly transferred to HDL in the bloodstream [34]. The protein promotes fat efflux, including cholesterol, from tissues to the liver for excretion. Apolipoprotein A-I itself also removes seeding molecules for oxidation from the arterial wall and also facilitates reverse cholesterol transport. In this study Apo A was significantly elevated after treatment in tandem with an increase in HDL which was almost significant. Hence *C. membranaceus* appears to have antiatherogenic properties as observed in preclinical studies [35].

Further clinical significance is the reduction in prostate volume. Indeed two hypotheses exist concerning the pathobiology of BPH. Prostate enlargement has been attributed to the accumulation of dihydrotestosterone (DHT) (which may cause cellular hyperplasia) and an increase in prostatic estrogen levels with age. Reduced prostate volume and prostatic index have previously been shown with the use of *C. membranaceus* aqueous root extract in animal models [17, 19, 35]. *Secale cereale* in combination with *Serenoa repens* is said to reduce prostate volume in animals [36]. Some studies using *Cucurbita pepo* L. and *Lepidium meyenii* as monoherbal preparations documented reduced prostate volume in animal models [37, 38]. Only few human studies with phytochemicals have demonstrated prostate volume reduction. In a meta-analysis by Azimi et al. [39], 32 human studies involving the use of medicinal plants were documented. PR-2000, a polyherbal plant extract (made up of *Tribulus terrestris* L., *Caesalpinia bonducella* (L.) Fleming, *Asparagus racemosus* Willd., *Areca catechu* L., and *Crataeva nurvala* Buch-Ham) reduced prostate volume after 6 months treatment [21]. Two monoherbal plants were said to have shrank the prostate. Of the two, the study of Safarinejad

[40] reported mild shrinkage using *Urtica dioica* L. extract. The other by Engelhardt and Riedl [30] used 60 mg/day isoflavone from *Trifolium pretense* (red clover) on 20 BPH patients and reported a reduction in prostate volume and PSA and improved IPSS. In that study PSA reduced significantly by 33% from 10.16 ng/mL to 7.15 ng/mL. In this study the PSA reduced significantly by 40.8% from 27.4 ng/mL to 16.2 ng/mL. Reduction of PSA observed in this study corroborates findings from preclinical studies [17], and this could be attributed to its possible 5 α -reductase inhibitory properties. Prostate volume shrinkage after 12-month treatment in the study of Debruyne et al. [26] was modest and insignificant (49.3 cm³ to 44.3 cm³). Of more serious consequences in that study, is the fact that all three liver transaminases significantly increased ($P < 0.001$) at the end of the study, signifying commencement of liver damage. In this study, prostate volume reduced significantly by 46.6% after 3-month *C. membranaceus* administration ($P = 0.023$). Liver function, renal function tests, and lipid profile remained normal.

5. Conclusion

In conclusion, the ethanolic root extract of *C. membranaceus* is one of the few monoherbal products that remarkably reduces PSA levels, prostate volume, and subsequently improves the QoL of patients with BPH. There is the need for a larger multicentered clinical trial to further confirm its efficacy and beneficial effects.

Conflict of Interests

The authors declare that there is no conflict of interests regarding the publication of this paper.

Acknowledgment

Funding for the study was provided by the Office of Research, Innovation and Development (ORID), University of Ghana.

References

- [1] G. C. Roehrborn, "Benign prostatic hyperplasia: an overview," *Reviews in Urology*, vol. 7, supplement 9, pp. S3–S14, 2005.
- [2] N. Dhingra and D. Bhagwat, "Benign prostatic hyperplasia: an overview of existing treatment," *Indian Journal of Pharmacology*, vol. 43, no. 1, pp. 6–12, 2011.
- [3] C. Roehrborn, "Benign prostatic hyperplasia and lower urinary tract symptom guidelines," *Canadian Urology Association Journal*, vol. 6, no. 5, supplement 2, pp. S130–S132, 2012.
- [4] D. M. Eisenberg, R. B. Davis, S. L. Ettner et al., "Trends in alternative medicine use in the United States, 1990–1997: results of a follow-up national survey," *The Journal of the American Medical Association*, vol. 280, no. 18, pp. 1569–1575, 1998.
- [5] R. C. Rosen, J. T. Wei, S. E. Althof, A. D. Seftel, M. Miner, and M. A. Perelman, "Association of sexual dysfunction with lower urinary tract symptoms of BPH and BPH medical therapies: results from the BPH Registry," *Urology*, vol. 73, no. 3, pp. 562–566, 2009.

- [6] S. A. Kaplan, D. E. Chung, R. K. Lee, S. Scofield, and A. E. Te, "A 5-year retrospective analysis of 5 α -reductase inhibitors in men with benign prostatic hyperplasia: finasteride has comparable urinary symptom efficacy and prostate volume reduction, but less sexual side effects and breast complications than dutasteride," *International Journal of Clinical Practice*, vol. 66, no. 11, pp. 1052–1055, 2012.
- [7] L. Zegarra, A. Vaisberg, C. Loza et al., "Double-blind randomized placebo-controlled study of *Bixa orellana* in patients with lower urinary tract symptoms associated to benign prostatic hyperplasia," *International Brazilian Journal of Urology*, vol. 33, no. 4, pp. 493–501, 2007.
- [8] K. Devesh and P. K. Mishra, "Plant based contraceptive popular among tribals of Iharhkhand," *Bioscience Discovery*, vol. 2, no. 1, pp. 11–14, 2011.
- [9] J. Yarney, A. Donkor, S. Y. Opoku et al., "Characteristics of users and implications for the use of complementary and alternative medicine in Ghanaian cancer patients undergoing radiotherapy and chemotherapy: a cross-sectional study," *BMC Complementary & Alternative Medicine*, vol. 13, article 16, 2013.
- [10] A. A. Appiah, W. A. Asomaning, I. V. Oppong et al., "Prospects of *Croton membranaceus* for prostate health," in *African Natural Plant Products: Volume II: Discoveries and Challenges in Chemistry, Health, and Nutrition*, H. R. Juliani, J. E. Simon, and C.-T. Ho, Eds., vol. 1127, pp. 79–92, Oxford University Press, Washington DC, USA, 2013.
- [11] F. A. Aboagye, *The effect of Croton membranaceus on dihydrotestosterone levels in blood and its synthesis by prostatic 5 alpha-reductase in the rat [M.Phil. thesis]*, Department of Biochemistry, University of Ghana, 1997.
- [12] F. A. Aboagye, G. H. Sam, G. Massiot, and C. Lavaud, "Julocrotine, a glutarimide alkaloid from *Croton membranaceus*," *Fitoterapia*, vol. 71, no. 4, pp. 461–462, 2000.
- [13] M. Lambert, D. Stärk, S. H. Hansen, and J. W. Jaroszewski, "HPLC-SPE-NMR hyphenation in natural products research: optimization of analysis of *Croton membranaceus* extract," *Magnetic Resonance in Chemistry*, vol. 43, no. 9, pp. 771–775, 2005.
- [14] M. T. Bayor, J. S. K. Ayim, G. Marston et al., "A cytotoxic diterpenoid from *Croton membranaceus*, the major constituent of anticancer herbal formulations used in Ghana," *Natural Product Communications*, vol. 3, no. 11, pp. 1875–1878, 2008.
- [15] J. A. Sarkodie, A. A. Appiah, D. A. Edoh et al., "Antihyperglycaemic and antioxidant effects of *Croton membranaceus* Mull. Arg (Euphorbiaceae)," *International Journal of Pharmaceutical Sciences and Research*, vol. 5, no. 1, pp. 110–115, 2014.
- [16] D. K. Afriyie, G. A. Asare, K. Bugyei et al., "Treatment of benign prostatic hyperplasia with *Croton membranaceus* in an experimental animal model," *Journal of Ethnopharmacology*, vol. 157, pp. 90–98, 2014.
- [17] D. K. Afriyie, G. A. Asare, K. Bugyei, J. Lin, J. Peng, and Z. Hong, "Mitochondria-dependent apoptogenic activity of aqueous root extract of *Croton membranaceus* against human BPH-1 cells," *Genetics and Molecular Research*, vol. 14, no. 1, pp. 149–162, 2015.
- [18] G. A. Asare, A. Sittie, K. Bugyei et al., "Acute toxicity studies of *Croton membranaceus* root extract," *Journal of Ethnopharmacology*, vol. 134, no. 3, pp. 938–943, 2011.
- [19] D. K. Afriyie, G. A. Asare, K. Bugyei, I. J. Asiedu-Gyekye, C. R. Tackie, and S. Adjei, "Prostate specific targeting of the aqueous root extract of *Croton membranaceus* in experimental animals," *Andrologia*, vol. 46, no. 7, pp. 753–760, 2014.
- [20] A. A. Appiah, *Phytochemical and biological analysis of Croton membranaceus [Ph.D. thesis]*, Chemistry Department, University of Ghana, 2011.
- [21] G. N. Shukla, M. Nayak, and K. S. Kulkarni, "Use of PR-2000, a herbal formulation in the medical management of benign prostatic hyperplasia," *Indian Journal of Clinical Practice*, vol. 13, no. 2, pp. 53–56, 2002.
- [22] S. Matsumoto, T. Hanai, T. Matsui, M. Oka, M. Tanaka, and H. Uemura, "Eviprostat suppresses urinary oxidative stress in a rabbit model of partial bladder outlet obstruction and in patients with benign prostatic hyperplasia," *Phytotherapy Research*, vol. 24, no. 2, pp. 301–303, 2010.
- [23] Y. Song, N.-C. Li, X.-F. Wang et al., "Clinical study of Eviprostat for the treatment of benign prostatic hyperplasia," *Zhonghua Nan Ke Xue*, vol. 11, no. 9, pp. 674–676, 2005.
- [24] N. A. Lopatkin, A. V. Sivkov, A. A. Medvedev et al., "Combined extract of Sabal palm and nettle in the treatment of patients with lower urinary tract symptoms in double blind, placebo-controlled trial," *Urologiia*, vol. 12, no. 2, pp. 14–19, 2006.
- [25] N. Lopatkin, A. Sivkov, S. Schläfke, P. Funk, A. Medvedev, and U. Engelmann, "Efficacy and safety of a combination of *Sabal* and *Urtica* extract in lower urinary tract symptoms—long-term follow-up of a placebo-controlled, double-blind, multicenter trial," *International Urology and Nephrology*, vol. 39, no. 4, pp. 1137–1146, 2007.
- [26] F. Debruyne, G. Koch, P. Boyle et al., "Comparison of a phytotherapeutic agent (Permixon) with an α -blocker (tamsulosin) in the treatment of benign prostatic hyperplasia: a 1-year randomized international study," *European Urology*, vol. 41, no. 5, pp. 497–507, 2002.
- [27] T. Schneider and H. Rübber, "Stinging nettle root extract (Bazoton-uno) in long term treatment of benign prostatic syndrome (BPS). Results of a randomized, double-blind, placebo controlled multicenter study after 12 months," *Urologe A*, vol. 43, no. 3, pp. 302–306, 2004.
- [28] B.-X. Xue, Y.-X. Shan, and G. Xiang, "Clinical evaluation on fengweicao granule in treating benign prostatic hyperplasia," *Zhongguo Zhong Xi Yi Jie He Za Zhi*, vol. 28, no. 5, pp. 456–458, 2008.
- [29] A. Vidlar, J. Vostalova, J. Ulrichova et al., "The effectiveness of dried cranberries (*Vaccinium macrocarpon*) in men with lower urinary tract symptoms," *British Journal of Nutrition*, vol. 104, no. 8, pp. 1181–1189, 2010.
- [30] P. F. Engelhardt and C. R. Riedl, "Effects of one-year treatment with isoflavone extract from red clover on prostate, liver function, sexual function, and quality of life in men with elevated PSA levels and negative prostate biopsy findings," *Urology*, vol. 71, no. 2, pp. 185–190, 2008.
- [31] M. A. Borros, "Clinical significance of measuring prostate-specific antigen," *Laboratory Medicine*, vol. 40, no. 8, pp. 487–491, 2009.
- [32] D. I. Kim, J. M. Song, and H. C. Chung, "Clinical significance of free-to-total prostate-specific antigen (PSA) ratio in advanced prostate cancer patients with PSA less than 0.1 ng/ml after hormone treatment," *Korean Journal of Urology*, vol. 53, no. 3, pp. 149–153, 2012.
- [33] T. Jansen and A. Daiber, "Direct antioxidant properties of bilirubin and biliverdin. Is there a role for biliverdin reductase?" *Frontiers in Pharmacology*, vol. 3, article 30, 2012.
- [34] K. M. Wasan, D. R. Brocks, S. D. Lee, K. Sachs-Barrable, and S. J. Thornton, "Impact of lipoproteins on the biological activity

- and disposition of hydrophobic drugs: implications for drug discovery," *Nature Reviews Drug Discovery*, vol. 7, no. 1, pp. 84–99, 2008.
- [35] D. K. Afriyie, G. A. Asare, K. Bugyei et al., "Anti-atherogenic and anti-ischemic potentials of *Croton membranaceus* observed during sub-chronic toxicity studies," *Pharmacognosy Research*, vol. 5, no. 1, pp. 10–16, 2013.
- [36] N. Talpur, B. Echard, D. Bagchi, M. Bagchi, and H. G. Preuss, "Comparison of *Saw Palmetto* (extract and whole berry) and Cernitin on prostate growth in rats," *Molecular and Cellular Biochemistry*, vol. 250, no. 1-2, pp. 21–26, 2003.
- [37] Y.-S. Tsai, Y.-C. Tong, J.-T. Cheng, C.-H. Lee, F.-S. Yang, and H.-Y. Lee, "Pumpkin seed oil and phytosterol-F can block testosterone/prazosin-induced prostate growth in rats," *Urologia Internationalis*, vol. 77, no. 3, pp. 269–274, 2006.
- [38] G. F. Gonzales, V. Vasquez, D. Rodriguez et al., "Effect of two different extracts of red maca in male rats with testosterone-induced prostatic hyperplasia," *Asian Journal of Andrology*, vol. 9, no. 2, pp. 245–251, 2007.
- [39] H. Azimi, A.-A. Khakshur, I. Aghdasi, M. Fallah-Tafti, and M. Abdollahi, "A review of animal and human studies for management of benign prostatic hyperplasia with natural products: perspective of new pharmacological agents," *Inflammation & Allergy—Drug Targets*, vol. 11, no. 3, pp. 207–221, 2012.
- [40] M. R. Safarinejad, "*Urtica dioica* for treatment of benign prostatic hyperplasia: a prospective, randomized, double-blind, placebo-controlled, crossover study," *Journal of Herbal Pharmacotherapy*, vol. 5, no. 4, pp. 1–11, 2006.