



RESEARCH ARTICLE

# Broad-spectrum capture of clinical pathogens using engineered Fc-mannose-binding lectin enhanced by antibiotic treatment [version 1; peer review: 2 approved]

Benjamin T. Seiler<sup>1</sup>, Mark Cartwright<sup>1</sup>, Alexandre L. M. Dinis<sup>1</sup>, Shannon Duffy<sup>1</sup>, Patrick Lombardo<sup>1</sup>, David Cartwright<sup>1</sup>, Elana H. Super<sup>1</sup>, Jacqueline Lanzaro<sup>1</sup>, Kristen Dugas<sup>1</sup>, Michael Super<sup>1,2</sup>, Donald E. Ingber <sup>1-3</sup>

<sup>1</sup>Wyss Institute for Biologically Inspired Engineering, Harvard University, Boston, Massachusetts, 02115, USA

<sup>2</sup>Vascular Biology Program, Boston Children's Hospital and Harvard Medical School, Boston, Massachusetts, 02115, USA

<sup>3</sup>Harvard John A. Paulson School of Engineering and Applied Sciences, Harvard University, Cambridge, Massachusetts, 02138, USA

**V1** **First published:** 25 Jan 2019, 8:108 (<https://doi.org/10.12688/f1000research.17447.1>)  
**Latest published:** 25 Jan 2019, 8:108 (<https://doi.org/10.12688/f1000research.17447.1>)

**Abstract**

**Background:** Fc-mannose-binding lectin (FcMBL), an engineered version of the blood opsonin MBL that contains the carbohydrate recognition domain (CRD) and flexible neck regions of MBL fused to the Fc portion of human IgG1, has been shown to bind various microbes and pathogen-associated molecular patterns (PAMPs). FcMBL has also been used to create an enzyme-linked lectin sorbent assay (ELLecSA) for use as a rapid (<1 h) diagnostic of bloodstream infections.

**Methods:** Here we extended this work by using the ELLecSA to test FcMBL's ability to bind to more than 190 different isolates from over 95 different pathogen species.

**Results:** FcMBL bound to 85% of the isolates and 97 of the 112 (87%) different pathogen species tested, including bacteria, fungi, viral antigens and parasites. FcMBL also bound to PAMPs including, lipopolysaccharide endotoxin (LPS) and lipoteichoic acid (LTA) from Gram-negative and Gram-positive bacteria, as well as lipoarabinomannan (LAM) and phosphatidylinositol mannoside 6 (PIM<sub>6</sub>) from *Mycobacterium tuberculosis*.

**Conclusions:** The efficiency of pathogen detection and variation between binding of different strains of the same species could be improved by treating the bacteria with antibiotics, or mechanical disruption using a bead mill, prior to FcMBL capture to reveal previously concealed binding sites within the bacterial cell wall. As FcMBL can bind to pathogens and PAMPs in urine as well as blood, its broad-binding capability could be leveraged to develop a variety of clinically relevant technologies, including infectious disease diagnostics, therapeutics, and vaccines.

**Keywords**

Mannose-binding lectin, Lipopolysaccharide, Lipoteichoic acid, Biomarker, Bacteria, Antibiotics, Diagnostic

**Open Peer Review**

**Reviewer Status**

	Invited Reviewers	
	1	2
<b>version 1</b>		
published 25 Jan 2019	report	report

1 **Damon Eisen** , James Cook University, Townsville, Australia  
 Townsville Hospital and Health Service, Townsville, Australia

2 **Anna Swierzko**, Polish Academy of Sciences, Lodz, Poland

Any reports and responses or comments on the article can be found at the end of the article.

**Corresponding author:** Donald E. Ingber ([don.ingber@wyss.harvard.edu](mailto:don.ingber@wyss.harvard.edu))

**Author roles:** **Seiler BT:** Conceptualization, Data Curation, Formal Analysis, Investigation, Methodology, Project Administration, Supervision, Validation, Visualization, Writing – Original Draft Preparation, Writing – Review & Editing; **Cartwright M:** Conceptualization, Data Curation, Investigation, Methodology, Project Administration, Supervision, Validation, Writing – Review & Editing; **Dinis ALM:** Data Curation, Investigation; **Duffy S:** Data Curation, Investigation; **Lombardo P:** Data Curation, Investigation; **Cartwright D:** Data Curation, Investigation; **Super EH:** Data Curation, Investigation; **Lanzaro J:** Data Curation, Investigation; **Dugas K:** Data Curation, Investigation; **Super M:** Conceptualization, Data Curation, Funding Acquisition, Investigation, Resources, Supervision, Writing – Review & Editing; **Ingber DE:** Conceptualization, Funding Acquisition, Investigation, Resources, Supervision, Visualization, Writing – Review & Editing

**Competing interests:** DEI, MS, MC, and BTS are inventors on one or more of the following patent applications: WO2011090954, WO2013012924, WO2013130875, WO2015009734, WO2017143024A2. DEI and MS are founders and hold equity in Boa Biomedical, Inc. DEI chairs its scientific advisory board.

**Grant information:** This work was supported by the Defense Advanced Research Projects Agency (DARPA) grants N66001-11-1-4180 and W911NF-16-C-0050, a Global Health Innovation Partnership (GHIP) grant from the Bill and Melinda Gates Foundation, and the Wyss Institute for Biologically Inspired Engineering.

*The funders had no role in study design, data collection and analysis, decision to publish, or preparation of the manuscript.*

**Copyright:** © 2019 Seiler BT *et al.* This is an open access article distributed under the terms of the [Creative Commons Attribution Licence](#), which permits unrestricted use, distribution, and reproduction in any medium, provided the original work is properly cited.

**How to cite this article:** Seiler BT, Cartwright M, Dinis ALM *et al.* **Broad-spectrum capture of clinical pathogens using engineered Fc-mannose-binding lectin enhanced by antibiotic treatment [version 1; peer review: 2 approved]** F1000Research 2019, 8:108 (<https://doi.org/10.12688/f1000research.17447.1>)

**First published:** 25 Jan 2019, 8:108 (<https://doi.org/10.12688/f1000research.17447.1>)

## Introduction

Mannose-binding lectin (MBL) is a key host-defense protein associated with the lectin pathway of the innate immune system<sup>1</sup>, and deficiency of MBL can lead to increased susceptibility to a wide-spectrum of infectious diseases<sup>2-4</sup>. MBL functions as a calcium-dependent, pattern-recognition opsonin that binds a range of carbohydrate molecules associated with the surfaces or cell walls of many different types of pathogens<sup>5</sup>. Collectively these microbial surface carbohydrate molecules, including for example, lipopolysaccharide endotoxin (LPS) and lipoteichoic acid (LTA), are referred to as pathogen-associated molecular patterns (PAMPs)<sup>6,7</sup>. MBL has the intrinsic ability to distinguish foreign PAMPs from self, subsequently activating the complement system and providing protection via antibody-dependent and independent mechanisms<sup>8,9</sup>.

Due to the evolutionarily conserved recognition carbohydrate moieties of PAMPs, MBL is a broad-spectrum opsonin that can bind over 90 different species of pathogens, including Gram-negative and Gram-positive bacteria, fungi, viruses, and parasites<sup>10-14</sup>. MBL binding to these various pathogens has been demonstrated by means of flow cytometry<sup>14,15</sup>, radio-immunoassay<sup>13,16</sup>, enzyme-linked immunosorbent assay (ELISA)<sup>13,17</sup>, immunofluorescence and scanning electron microscopy (SEM)<sup>18</sup>, and *Saccharomyces cerevisiae*-induced MBL activation and bystander lysis of chicken erythrocytes<sup>19</sup>. However, many discrepancies in MBL binding have been described, depending on the method used. For example, use of flow cytometry revealed little to no MBL binding to *Pseudomonas aeruginosa*, while others have reported good binding of MBL to *Pseudomonas aeruginosa* using a hemolytic assay<sup>15,19</sup>.

We set out to address these conflicting results by leveraging the recent development of an engineered version of MBL that contains the carbohydrate recognition domain (CRD) and flexible neck regions of MBL fused to the Fc portion of human IgG1, which is known as FcMBL<sup>20</sup>. The engineered FcMBL lacks the regions of the native molecule that interact with MBL-associated serine proteases (MASPs) that activate complement and promote blood coagulation, and thus, it can be used to capture PAMPs from complex biological fluids, such as blood and urine, without activating effector functions of complement, coagulation, and phagocytosis. We have previously used FcMBL in extracorporeal therapies, such as hemofiltration, and in diagnostics to capture and detect *Staphylococcus aureus* from osteoarticular and synovial fluids of infected patients<sup>20-22</sup>. In the present study, we used a previously described sandwich enzyme-linked lectin sorbent assay (ELLeSA) in which both live and fragmented pathogens (PAMPs) are captured using FcMBL conjugated to magnetic beads and then detected with horseradish peroxidase (HRP)-labeled MBL<sup>23</sup>. This ELLeSA has demonstrated FcMBL binding to 85% (47 of 55) of pathogen species previously tested, and enabled rapid diagnosis of bloodstream infections by capturing and detecting PAMPs in whole blood from human patients<sup>23</sup>. Here we extend this testing to include 69 isolates from 57 more pathogen species using the ELLeSA. In total, we measure direct binding of FcMBL to over 190 pathogen isolates from over 95 different pathogen species, including bacteria,

fungi, viral antigens, parasites, and bacterial cell wall molecules. As a result of this more extensive analysis, we demonstrate that FcMBL detection increases to 85% of the isolates and 87% (97 out of 112) of the pathogen species tested. Furthermore, we show that antibiotic treatment or mechanical disruption of the bacterial pathogens exposes previously concealed FcMBL binding sites on cell walls, thereby increasing the efficiency of pathogen detection and reducing variation between binding of different strains of the same species. We also show that FcMBL can detect PAMPs in urine as well as blood, making this potential diagnostic technology highly synergistic with standard of care antibiotic therapy.

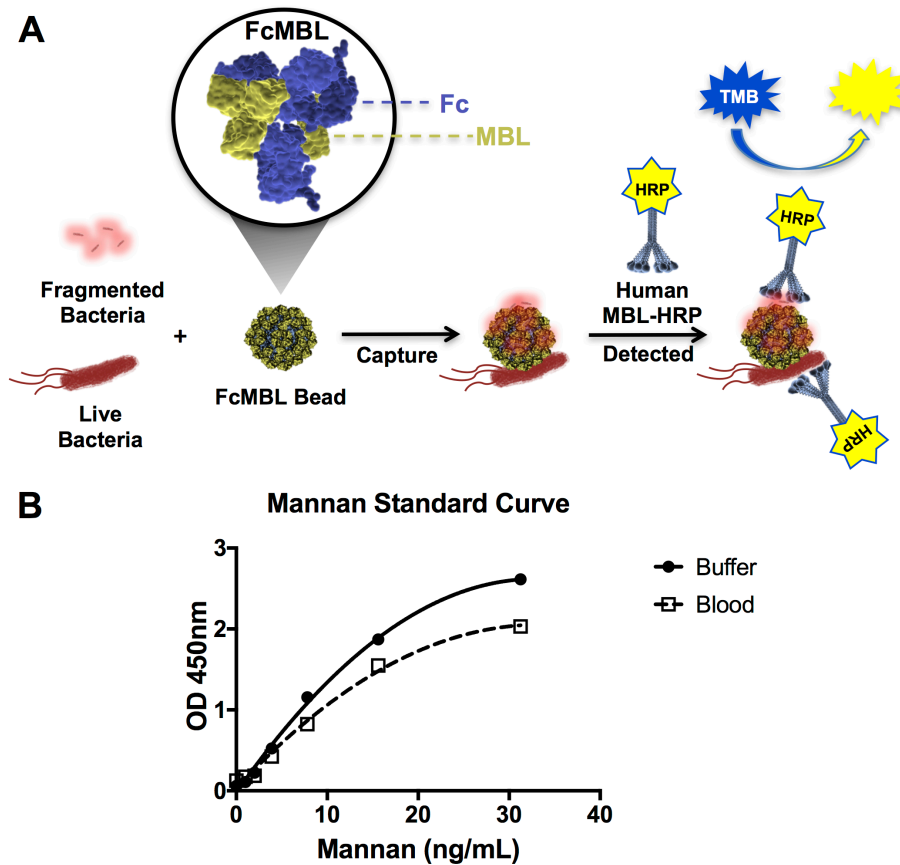
## Results

### FcMBL binding to bacteria

We first set out to determine the range of pathogens that FcMBL can capture by screening multiple species of bacteria, fungi, viral antigens, and parasites using the ELLeSA detection technology. In the FcMBL ELLeSA, pathogen materials in experimental samples are captured with FcMBL immobilized on superparamagnetic beads (1  $\mu$ m diameter), magnetically separated, washed, detected with human MBL linked to horseradish peroxidase (HRP), magnetically separated again, washed, and then tetramethylbenzidine (TMB) substrate is added to measure the amount of pathogen material bound (Figure 1A). Results were quantified by interpolating against an internal standard curve generated using yeast mannan in buffer [50 mM Tris-HCl, 150 mM NaCl, 0.05% Tween-20, 5 mM CaCl<sub>2</sub>, pH 7.4 (TBST 5 mM CaCl<sub>2</sub>)] (Figure 1B). In addition, we show that while the curve sensitivity is reduced when mannan is spiked into whole human blood, the limit of detection remained similar (1 ng/ml) as it does in buffer (Figure 1B).

Initially our focus was on screening bacteria and as such we compiled a comprehensive list of clinically relevant bacterial pathogens (Table 1)<sup>23</sup>. When we screened 82 different species of bacteria to compare FcMBL binding to live versus fragmented cells, we found that FcMBL detected 59 out of 82 live microbes (72%) and that more could be detected (70 out of 82; 85%) after they were fragmented by treating with antibiotics, or mechanically disrupted using zirconia/silica beads in a mixer mill (Table 1)<sup>23</sup>. The antibiotics we used in this study were clinical grade cefepime, ceftriaxone, meropenem, amikacin, gentamicin, and vancomycin, to provide enough coverage to target this diverse range of bacteria. We dosed each bacterial class with a single appropriate antibiotic dose ( $\leq$ 1 mg/ml) to obtain acute fragmentation within 4 hours.

To determine if inducing bacterial fragmentation via antibiotic treatment or bead milling would reduce variation in FcMBL binding between different strains of the same species, we screened 134 isolates from 21 of the 88 Gram-positive and Gram-negative bacterial species, including strains tested by Cartwright *et al.* (Figure 2)<sup>23</sup>. As before, FcMBL bound a greater proportion of the pathogens when fragmented (113/134 = 84%) than when live and intact (77/134 = 57%). For some bacterial species such as *Enterobacter cloacae*, *Escherichia coli*, *Klebsiella oxytoca*, and *Klebsiella pneumoniae* we found that mechanical disruption



**Figure 1. FcMBL ELLEcSA.** (A) Diagrammatic representation of the FcMBL ELLEcSA methodology. Live and fragmented bacteria are captured by FcMBL, which has been coated on superparamagnetic beads via an N-terminal aminoxy-biotin on the Fc to allow oriented attachment to streptavidin (FcMBL Bead). FcMBL beads with captured bacteria are then magnetically separated and detected using recombinant human MBL linked to horseradish peroxidase (Human MBL-HRP). Tetramethylbenzidine (TMB) substrate is added to quantify captured bacteria and results are read at OD 450nm. (B) Mannan standard curve showing FcMBL binding to mannan in buffer and spiked into whole human blood (<24 h from draw), measured at optical density 450 nm. The mannan standard curve in buffer serves as an internal assay control, and is used to determine FcMBL binding to pathogen material in units of PAMPs/ml (where 1 ng/ml of mannan bound by FcMBL is equivalent to 1 PAMP unit. PAMP units are then multiplied by the dilution factor of the sample volume to give PAMPs/ml).

or antibiotic-induced fragmentation greatly increased FcMBL binding, whereas other bacteria like *Pseudomonas aeruginosa*, *Yersinia pseudotuberculosis*, and MRSA bound equally well when live and intact (Figure 2). With the exception of *Proteus mirabilis* and *Enterococcus faecalis*, which FcMBL did not bind at all, the capture of fragmented bacteria was equal to or greater than that of live bacteria (Figure 2).

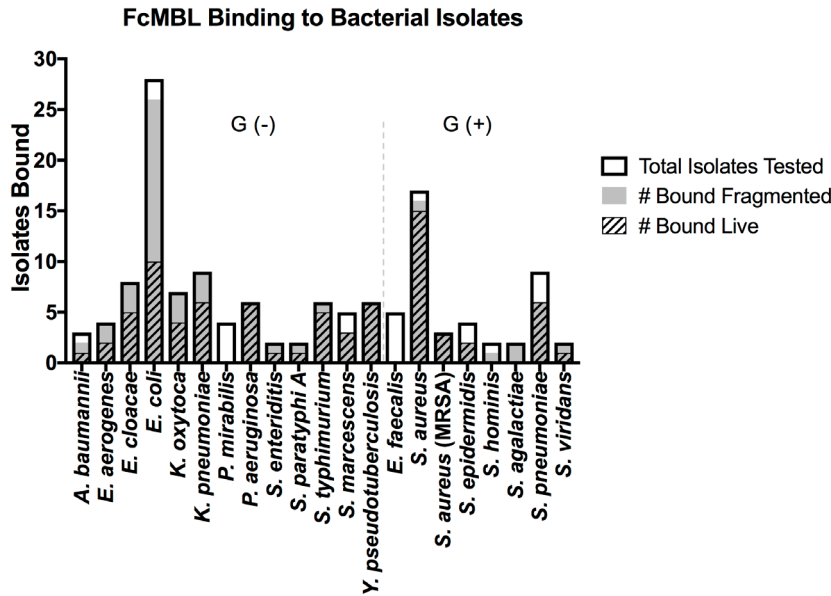
These findings are consistent with past studies that showed the efficiency of MBL binding to live bacteria differs between isolates from the same bacterial genus and species, possibly due to differences in encapsulation<sup>15,16</sup>. To illustrate that the heterogeneity of MBL binding to live isolates of the same species can be reduced by using antibiotics to disrupt previously cryptic binding sites, we used two different isolates of *Escherichia coli*, and two different isolates of *Streptococcus pneumoniae*. *E. coli* 41949 and *S. pneumoniae* 3 exhibited equivalent FcMBL binding whether they were live or fragmented with antibiotics (1 mg/ml cefepime or ceftriaxone, respectively, for 4 hours), whereas

fragmented forms of *E. coli* RS218 and *S. pneumoniae* 19A isolates bound much more effectively to FcMBL than living forms (Figure 3A–D). This difference was further supported visually using scanning electron microscopy (SEM) in which magnetic FcMBL beads could be seen to bind both live and fragmented versions of *E. coli* 41949 and *S. pneumoniae* 3, but with *E. coli* RS218 and *S. pneumoniae* 19A, the FcMBL beads only bound to fragmented material (Figure 3E–H). FcMBL binding increases upon fragmentation, which is correlated with LPS release measured using a limulus amoebocyte lysate (LAL) assay: equal amounts of LPS were detected for *E. coli* 41949 whether live or fragmented, whereas LPS levels were higher in antibiotic treated *E. coli* RS218 (Figure 3I, J). These results suggest that antibiotic treatment results in exposure of previously cryptic PAMPs in the cell wall, including toxins such as LPS and LTA, which leads to greatly increased binding of FcMBL.

In these studies, we found that 12 bacterial species, including multiple species of *Enterococcus* and *Proteus*, failed to bind to

**Table 1. FcMBL binding profile of bacteria, fungi, viral antigens, parasites, and bacterial antigens.** Multiple species of bacteria, including multiple isolates (number of isolates), were screened by FcMBL ELLeSA to determine FcMBL binding. Total number detected of both live and fragmented bacterial isolates is shown. Fungi were screened and total number detected for live isolates shown. Purified or inactivated viral antigens, parasites, and bacterial antigens were tested directly in TBST 5 mM CaCl<sub>2</sub> buffer, and number detected shown. Test samples were performed in duplicate. NT, not tested.

Bacteria					Fungi			
Genus	Species	# of Isolates	Live Detected	Fragmented Detected	Genus	Species	# of Isolates	Live Detected
<i>Acinetobacter</i>	<i>calcoaceticus</i>	1	0	1	<i>Aureobasidium</i>	<i>pullulans</i>	1	1
<i>Acinetobacter</i>	<i>lwoffii</i>	1	0	1	<i>Candida</i>	<i>auris</i>	1	1
<i>Achromobacter</i>	<i>xylosoxidans</i>	1	1	1	<i>Penicillium</i>	<i>crustosum</i>	1	1
<i>Actinobacillus</i>	<i>pleuropneumoniae</i>	1	1	1				
<i>Aerococcus</i>	<i>viridans</i>	1	1	1	<b>Viral Antigens</b>			
<i>Aeromonas</i>	<i>hydrophila</i>	1	1	1				
<i>Aeromonas</i>	<i>veronii</i>	1	1	1	<b>Species</b>	<b>Antigen</b>	<b># of Isolates</b>	<b>Detected</b>
<i>Alcaligenes</i>	<i>faecalis</i>	1	0	1				
<i>Bacillus</i>	<i>anthracis</i>	1	1	1	<i>Chikungunya</i>	<i>E1</i>	1	0
<i>Bacillus</i>	<i>cereus</i>	1	1	1	<i>Cytomegalovirus</i>	<i>particles</i>	1	1
<i>Bacillus</i>	<i>thurigiensis</i>	1	0	1	<i>Dengue</i>	<i>Serotype 1 VLP</i>	1	1
<i>Bartonella</i>	<i>henselae</i>	1	1	1	<i>Ebola</i>	<i>GP1</i>	1	1
<i>Cardiobacterium</i>	<i>hominis</i>	1	1	1	<i>HIV</i>	<i>gp120</i>	1	1
<i>Corynebacterium</i>	<i>amycolatum</i>	1	1	1	<i>Influenza H1N1</i>	<i>hemagglutinin</i>	1	1
<i>Corynebacterium</i>	<i>minutissimum</i>	1	1	1	<i>Influenza H1N1</i>	<i>neuraminidase</i>	1	1
<i>Corynebacterium</i>	<i>pseudodiphtheriticum</i>	1	1	1	<i>Respiratory Syncytial</i>	<i>glycoprotein g</i>	1	1
<i>Corynebacterium</i>	<i>striatum</i>	1	1	1	<i>Tick-borne Encephalitis</i>	<i>NS1</i>	1	0
<i>Citrobacter</i>	<i>koseri</i>	1	0	1	<i>Zika</i>	<i>lysate</i>	1	1
<i>Eikenella</i>	<i>corrodens</i>	1	1	1				
<i>Enterococcus</i>	<i>avium</i>	1	1	1	<b>Parasites</b>			
<i>Enterococcus</i>	<i>casseliflavus</i>	1	1	1				
<i>Escherichia</i>	<i>coli</i>	2	0	2	<b>Genus</b>	<b>Species</b>	<b># of Isolates</b>	<b>Detected</b>
<i>Kingella</i>	<i>kingae</i>	1	0	0				
<i>Lactococcus</i>	<i>lactis</i>	1	1	1	<i>Plasmodium</i>	<i>falciparum</i>	1	0
<i>Laribacter</i>	<i>hongkongensis</i>	1	1	1	<i>Trichomonas</i>	<i>vaginalis</i>	1	1
<i>Moraxella</i>	<i>catarrhalis</i>	1	1	1				
<i>Mycobacterium</i>	<i>bovis</i>	1	NT	1	<b>Bacterial Antigens</b>			
<i>Providencia</i>	<i>stuartii</i>	1	1	1				
<i>Pseudomonas</i>	<i>aeruginosa</i>	5	5	5	<b>Antigen</b>	<b># of Isolates</b>	<b>Detected</b>	
<i>Pseudomonas</i>	<i>putida</i>	1	1	1				
<i>Pseudomonas</i>	<i>stutzeri</i>	1	0	1	Lipoarabinomannan	1	1	
<i>Rothia</i>	<i>mucilaginoso</i>	1	0	1	Lipopolysaccharide	5	5	
<i>Staphylococcus</i>	<i>aureus</i> (MRSA)	1	1	1	Lipomannan	1	1	
<i>Staphylococcus</i>	<i>caprae</i>	1	0	0	Lipoteichoic acid	3	3	
<i>Staphylococcus</i>	<i>cohnii</i>	1	1	1	Phosphatidylinositol mannoside 1,2	1	0	
<i>Staphylococcus</i>	<i>haemolyticus</i>	1	0	0	Phosphatidylinositol mannoside 6	1	1	
<i>Staphylococcus</i>	<i>intermedius</i>	1	1	1				
<i>Staphylococcus</i>	<i>warneri</i>	1	0	0				
<i>Streptococcus</i>	<i>anginosus</i>	1	0	1				
<i>Streptococcus</i>	<i>bovis</i>	1	1	1				
<i>Streptococcus</i>	<i>Group B</i>	1	1	1				
<i>Streptococcus</i>	<i>Group C</i>	1	1	1				
<i>Streptococcus</i>	<i>dysgalactiae</i>	1	1	1				
<i>Streptococcus</i>	<i>pneumoniae</i>	4	4	4				
<i>Streptococcus</i>	<i>sanguinis</i>	1	1	1				
<i>Streptococcus</i>	<i>suis</i>	1	0	1				



**Figure 2. FcMBL binding to bacterial isolates is equal to or enhanced upon fragmentation.** The graph is divided between Gram-negative bacterial isolates [Gram (-)] and Gram-positive bacterial isolates [Gram (+)]. Data are presented as the number of bacterial isolates bound live and fragmented within the total isolates tested for each species: *A. baumannii* ( $n = 3$ ), *E. aerogenes* ( $n = 4$ ), *E. cloacae* ( $n = 8$ ), *E. coli* ( $n = 28$ ), *K. oxytoca* ( $n = 7$ ), *K. pneumoniae* ( $n = 9$ ), *P. mirabilis* ( $n = 4$ ), *P. aeruginosa* ( $n = 6$ ), *S. enteritidis* ( $n = 2$ ), *S. paratyphi A* ( $n = 2$ ), *S. typhimurium* ( $n = 6$ ), *S. marcescens* ( $n = 5$ ), *Y. pseudotuberculosis* ( $n = 6$ ), *E. faecalis* ( $n = 5$ ), *S. aureus* ( $n = 17$ ), *S. aureus* (MRSA) ( $n = 3$ ), *S. epidermidis* ( $n = 4$ ), *S. hominis* ( $n = 2$ ), *S. agalactiae* ( $n = 2$ ), *S. pneumoniae* ( $n = 9$ ), *S. viridans* ( $n = 2$ ).

FcMBL even when treated for 4 hours with combinations of antibiotics (500  $\mu\text{g/ml}$  vancomycin and 500  $\mu\text{g/ml}$  amikacin for Gram-positive isolates or 500  $\mu\text{g/ml}$  cefepime and 500  $\mu\text{g/ml}$  amikacin for Gram-negative isolates) (Table 1)<sup>23</sup>. Importantly however, FcMBL was able to detect 84% (172 out of 204) of the bacterial isolates (Figure 4), which includes 9 of the 10 pathogens responsible for most healthcare-associated infections in acute care hospitals in the U.S., with *Enterococcus* species being the one exception<sup>24</sup>.

#### FcMBL binding to bacterial cell wall components

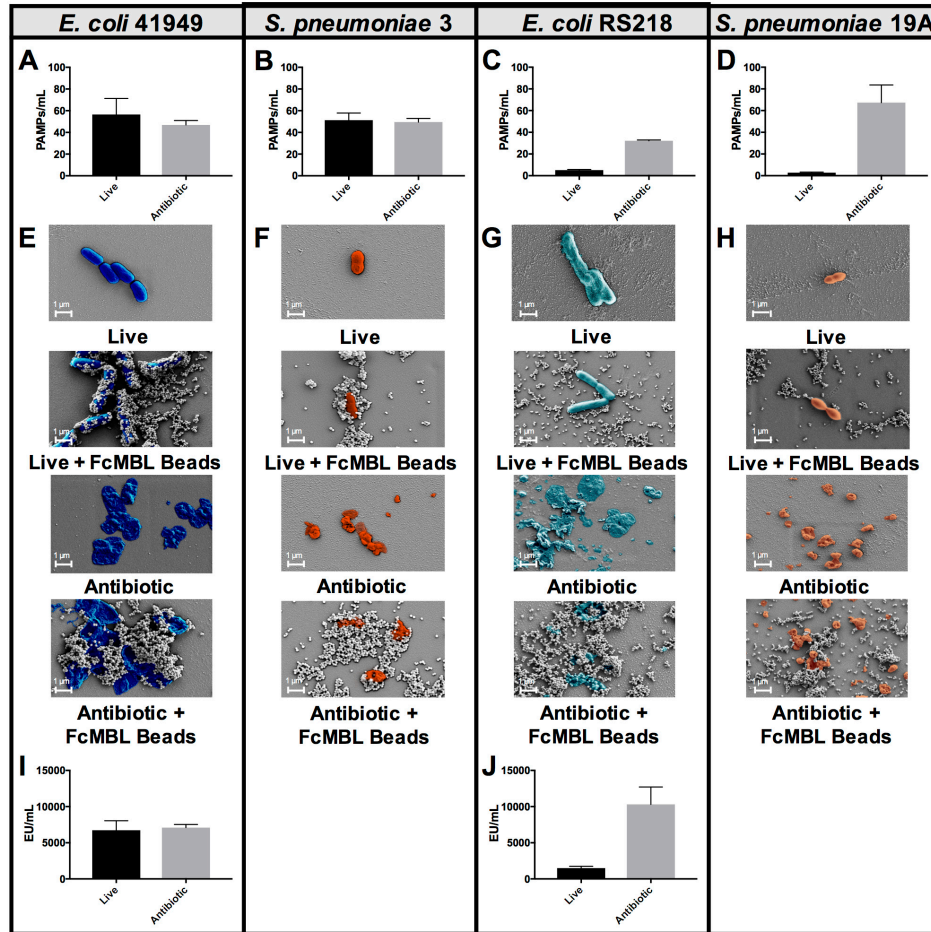
We further explored FcMBL's ability to bind bacterial cell wall components because when bead mill or antibiotics were used to disrupt the membranes of Gram-negative isolates ( $n = 117$ ), there was a significant boost in FcMBL detection efficiency with fragmented cells (89%) versus live intact cells (58%) (Figure 4), which is likely due to exposure of LPS that is present in high concentrations in their cell wall<sup>25</sup>. Similarly, FcMBL also detected a greater percentage (77%) of fragmented Gram-positive isolates ( $n = 78$ ), versus live intact cells (65%) (Figure 4). Thus, to better understand some of the major targets that FcMBL binds when bacteria are fragmented, we extended our analysis using purified samples of LPS and LTA<sup>25,26</sup>.

Using the ELLeSA, we screened LPS purified from Gram-negative bacteria (*Serratia marcescens*, *Klebsiella pneumoniae*, and *Salmonella enterica* serovar enteritidis), as well as LTA from Gram-positive bacteria (*Enterococcus hirae*, *Staphylococcus aureus*, and *Streptococcus pyogenes*) in TBST 5 mM CaCl<sub>2</sub>, as

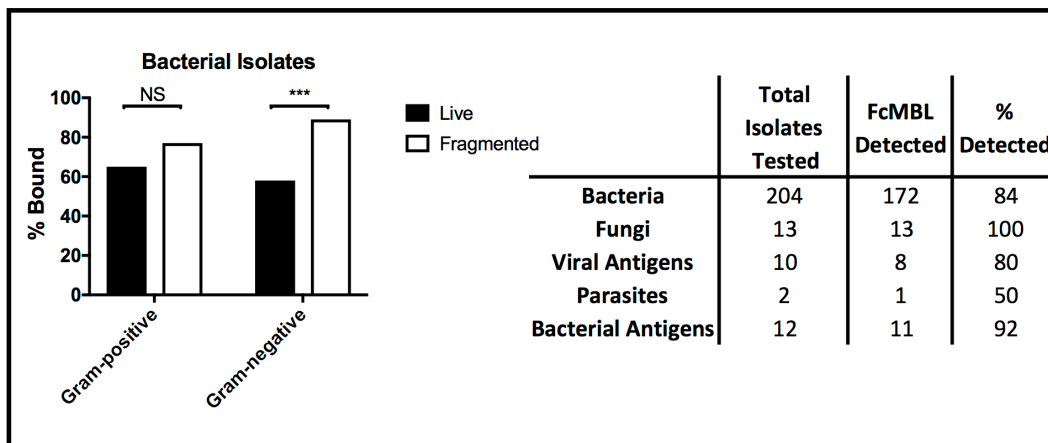
well as in more clinically relevant human whole blood samples.

We found that FcMBL was able to detect LPS from all 3 Gram-negative species, with *S. marcescens* being the best (1 ng/ml limit of detection in buffer and 3.9 ng/ml in blood) (Figure 5A–C). FcMBL also bound to *E. hirae* LTA very well (15.6 ng/ml limit of detect in buffer and 62.5 ng/ml in blood) (Figure 5D), which is consistent with past findings<sup>27</sup>. Also consistent with past findings, we found that FcMBL binds *S. aureus* LTA through the carbohydrate recognition domain (Figure 5E and Supplementary Figure 1)<sup>28,29</sup>. Notably, however, FcMBL also bound *S. pyogenes* LTA (Figure 5F), which is in contrast to the past finding that MBL binds well to *E. hirae* LTA but poorly to LTA from *S. pyogenes* due to lack of glycosyl substituents<sup>27,30</sup>.

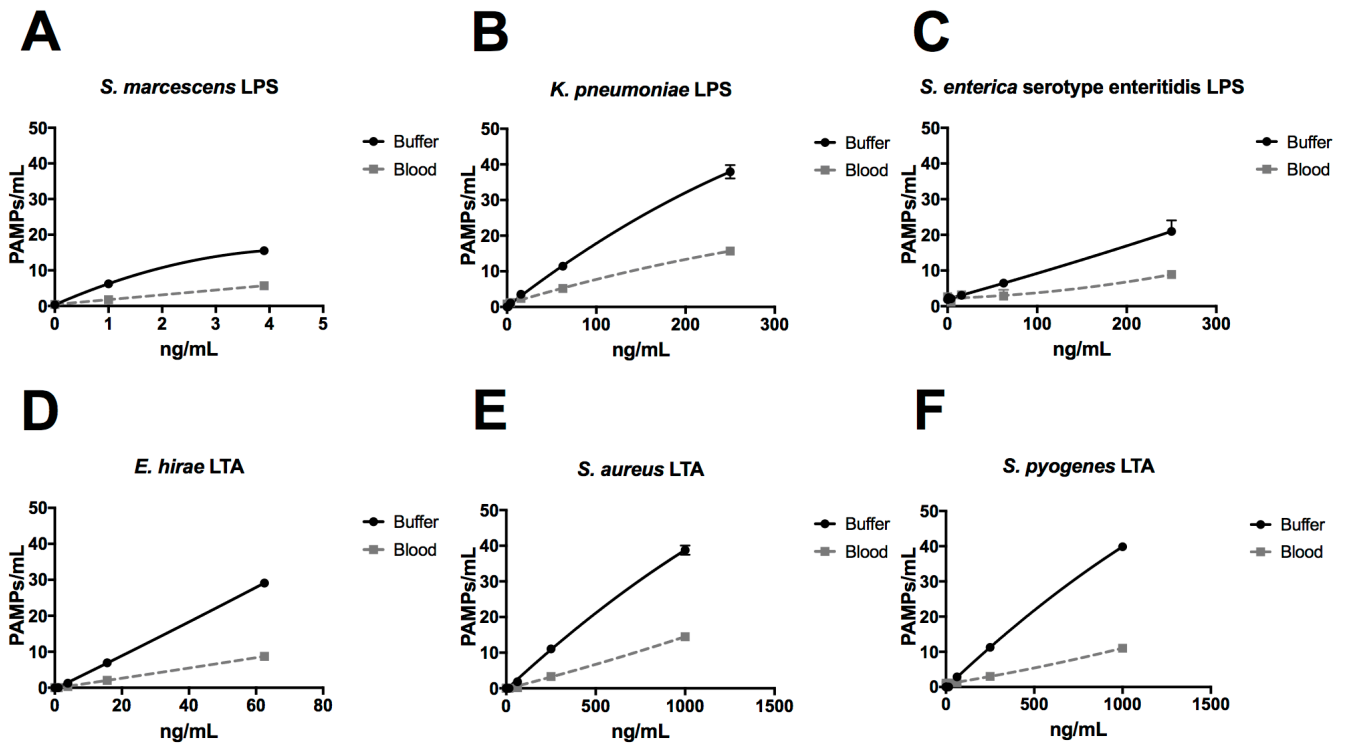
We next tested FcMBL's ability to bind lipoarabinomannan (LAM) and its biosynthetic precursors, phosphatidylinositol mannoside 1 & 2 and 6 (PIM<sub>1,2</sub> and PIM<sub>6</sub>) from *Mycobacterium tuberculosis* (TB) strain H37Rv<sup>31,32</sup>. LAM released from metabolically replicating or degrading TB bacteria has been detected in both blood and urine<sup>33,34</sup>. Thus, we assessed the ability of FcMBL to capture and detect LAM, as well as PIM<sub>1,2</sub> and PIM<sub>6</sub>, spiked into both of these complex biological fluids as well as buffer. Our initial screen in buffer confirmed that FcMBL can detect LAM and PIM<sub>6</sub> at levels down to 4 ng/ml, but it did not detect PIM<sub>1,2</sub> (Figure 6A–C). FcMBL also bound to LAM in both blood and urine but its binding sensitivity was reduced as it could only detect 15.6 ng/ml and 250 ng/ml, respectively. FcMBL binding to PIM<sub>6</sub> exhibited a similar sensitivity in buffer, but it could only detect 62.5 ng/ml and 15.6 ng/ml in blood and urine, respectively.



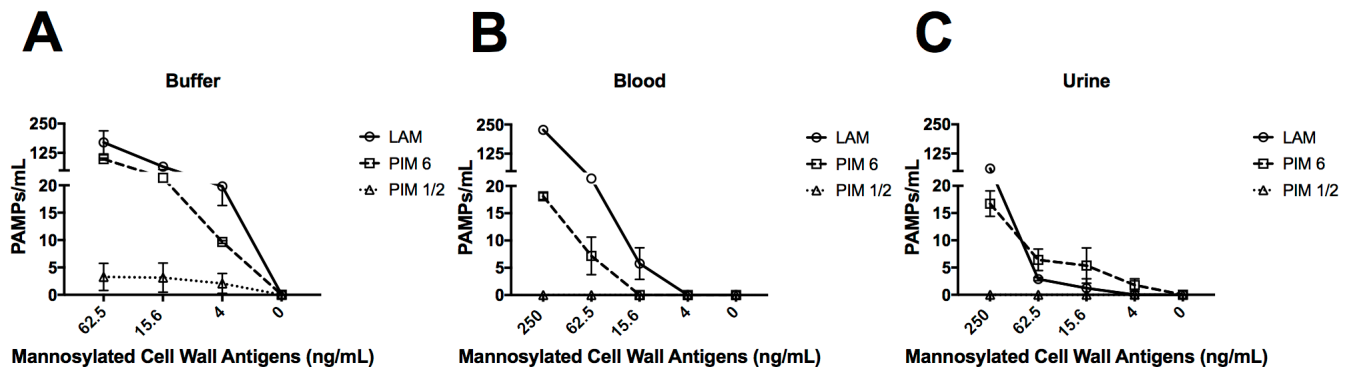
**Figure 3. FcMBL bacterial binding efficiency can be enhanced with antibiotic treatment.** (A–D) PAMPs/ml detection by FcMBL ELecSA of both live ( $10^7$  CFU/ml) and fragmented bacteria using antibiotics (cefepime 1 mg/ml or ceftriaxone 1 mg/ml). (A) *E. coli* 41949, (B) *S. pneumoniae* 3, (C) *E. coli* RS218, and (D) *S. pneumoniae* 19A. (E–H) Scanning electron microscopy images showing FcMBL bead (128 nm) capture of both live and fragmented bacteria using antibiotics (cefepime 1 mg/ml or ceftriaxone 1 mg/ml). (E) *E. coli* 41949, (F) *S. pneumoniae* 3, (G) *E. coli* RS218, and (H) *S. pneumoniae* 19A. (I, J) LPS endotoxin measurement (LAL assay) using  $10^7$  CFU/ml of both live and fragmented bacteria using antibiotics (cefepime 1 mg/ml). (I) *E. coli* 41949 and (J) *E. coli* RS218.



**Figure 4. Summary of FcMBL pathogen capture.** (Left) Percent of live and fragmented Gram-positive ( $n = 78$ ) and Gram-negative ( $n = 117$ ) bacterial isolates bound by FcMBL ELecSA. (Right) Chart showing total number of isolates tested by FcMBL ELecSA for bacteria, fungi, viral antigens, parasites, and bacterial antigens, total number FcMBL detected, and total percent detected overall. \*\*\*p-value < 0.0001; Pearson's chi-squared test. NS, not significant.



**Figure 5.** FcMBL ELLeCSA screening of purified lipopolysaccharide (LPS) and lipoteichoic acid (LTA). LPS from (A) *S. marcescens*, (B) *K. pneumoniae*, and (C) *S. enterica* serovar enteritidis, and LTA from (D) *E. hirae*, (E) *S. aureus*, and (F) *S. pyogenes* were spiked into either TBST 5 mM CaCl<sub>2</sub> buffer or whole human blood at indicated concentrations.



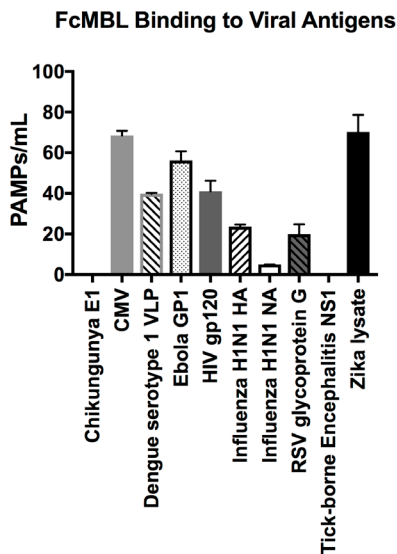
**Figure 6.** FcMBL ELLeCSA screening of *Mycobacterium tuberculosis* strain H37Rv glycolipids PIM<sub>1,2</sub>, PIM<sub>6</sub>, and LAM. Glycolipids spiked into (A) buffer (TBST 5mM CaCl<sub>2</sub>), (B) whole human blood, and (C) urine. FcMBL detected LAM and PIM<sub>6</sub> at 4 ng/ml in buffer, but not PIM<sub>1,2</sub>. Sensitivity of LAM and PIM<sub>6</sub> is reduced in whole human blood and urine.

**FcMBL binding to fungi, parasites, viral antigens, and bacterial cell wall antigens**

In addition to screening multiple bacteria, we also tested FcMBL’s ability to bind to 12 different species of fungi, 10 viral antigens, 2 species of parasites, and 6 purified bacterial cell wall antigens (Table 1)<sup>23</sup>. In contrast to studies with bacteria, FcMBL was found to bind 100% of live fungal cells from all 12 species and 13 isolates tested (Figure 4). Of the two parasites tested in this preliminary analysis, only *Trichomonas vaginalis*

was bound by FcMBL, whereas 80% of the viral antigens screened and 92% of the purified bacterial cell wall antigens were detected (Figure 4 and Figure 7). The handful of pathogen material FcMBL did not detect included the E1 protein from Chikungunya virus, the NS1 protein from Tick-borne encephalitis virus, *Plasmodium falciparum*, and PIM<sub>1,2</sub> from TB. In total, the overall FcMBL binding profile respectively detected 85% (194 out of 229) of isolates, and 87% (97 out of 112) of the different pathogen species tested.





**Figure 7. FcMBL binding to viral antigens.** FcMBL ELLeCSA screening of Chikungunya E1 (3.0  $\mu\text{g/ml}$ ), Cytomegalovirus (CMV)( $10^7$  PFU), Dengue serotype 1 VLP (0.36  $\mu\text{g/ml}$ ), Human immunodeficiency virus (HIV) gp120 (0.1  $\mu\text{g/ml}$ ), Ebola GP1 (0.2  $\mu\text{g/ml}$ ), Influenza H1N1 HA (0.1  $\mu\text{g/ml}$ ), Influenza H1N1 NA (1  $\mu\text{g/ml}$ ), Respiratory syncytial virus (RSV) glycoprotein g (10.0  $\mu\text{g/ml}$ ), Tick-borne Encephalitis NS1 (5  $\mu\text{g/ml}$ ), and Zika lysate (0.24  $\mu\text{g/ml}$ ).

Raw data for the present study are available on [OSF<sup>29</sup>](#).

## Discussion

MBL has been reported to bind to over 90 different pathogen species as well as PAMPs released from these microbes based on studies in which binding was assessed by means of flow cytometry, ELISA, radio-immunoassay, immunofluorescence and SEM, or hemolytic assays<sup>12-19</sup>; however, different results have been obtained with different methods. Here we explored the broad-spectrum binding capabilities of an engineered form of MBL, known as FcMBL, using a previously described magnetic ELLeCSA detection assay to quantify binding of MBL to over 190 isolates from over 95 different pathogen species, which include bacteria, fungi, viral antigens, parasites, and bacterial cell wall antigens<sup>23</sup>. FcMBL was previously shown to bind PAMPs released from 47 of 55 (85%) pathogen species tested, including 38 species of bacteria and 9 species of fungi<sup>23</sup>. The FcMBL ELLeCSA also was able to detect infectious PAMPs in whole blood of sepsis patients, regardless of antibiotic therapy (blood culture positive or negative) with a detection sensitivity and specificity of 85% and 89%, respectively<sup>23</sup>. In the present study, we utilized the ELLeCSA to extend this testing to include 69 isolates from 57 more pathogen species. In total, our results confirm that FcMBL binds to 85% of the isolates and 97 of the 112 species tested, which corresponds to an increased detection sensitivity of 87%.

MBL binding to different clinical bacterial isolates of the same species has previously produced conflicting results<sup>15,16</sup>. These same studies also described that most Gram-negative isolates

(encapsulated strains) bound little or no MBL. We have reported similar results as we previously found that FcMBL only bound 38% of live clinical *E. coli* isolates tested; however, upon fragmentation and release of PAMPs, FcMBL detection of these same isolates increased to 92%<sup>23</sup>. Broader examination of Gram-negative bacteria in the present study revealed a similar pattern: FcMBL only detected 68/117 (58%) of live isolates, but when these same microbes were treated with antibiotics or bead mill, the detection sensitivity significantly increased to 89% (104/117 isolates). Apparently, by treating bacteria with antibiotics or bead mill we were able to disrupt the encapsulated cell wall, exposing and presenting previously hidden PAMPs, thereby increasing binding and reducing variability between isolates within the same bacterial species. However, even with cell wall disruption, FcMBL did not bind 12 bacterial species, including multiple isolates of *E. faecalis* and *P. mirabilis*. These microbes likely lack the complex polysaccharide antigens which FcMBL and MBL bind. Alternatively, the binding sites might still be present, but if they are, they remain inaccessible due to the unique structure of their cell wall (e.g. carbohydrate conformation, sugar density or composition). Alternatively, the antibiotics we used might not be optimal for disrupting the cell walls of these bacteria.

To emphasize the ability of FcMBL to be used to detect the presence of a systemic pathogenic infection even when blood cultures are negative, we tested its ability to bind LPS and LTA that are major PAMP-associated toxins released by multiple species of bacteria. FcMBL was able to detect both LPS and LTA from all 6 bacterial species tested in both buffer and blood, although detection sensitivity was consistently higher in buffer. In addition, we explored whether FcMBL binds to the antigenic PAMPs, LAM, PIM<sub>1,2</sub>, and PIM<sub>6</sub> from *M. tuberculosis* H37Rv because these are active virulence factors associated with TB pathogenesis, and hence, they are critically important targets for point-of-care diagnostic and vaccine applications<sup>35-38</sup>. We found that FcMBL can detect LAM and PIM<sub>6</sub>, but not PIM<sub>1,2</sub>, in buffer, urine, and blood; this difference in binding is likely due to the fact that PIM<sub>1,2</sub> has 4 fewer branched mannose residues than PIM<sub>6</sub><sup>39</sup>.

Preliminary viral antigen detection in the ELLeCSA was encouraging, demonstrating FcMBL binding to 8 of 10 (80%) species. We screened these viral antigens at a range of 0.1  $\mu\text{g/ml}$  to 10  $\mu\text{g/ml}$  that is within or below the range at which viral proteins are known to induce an immune response in vaccines<sup>40-42</sup>.

While the FcMBL ELLeCSA cannot distinguish between different types of infections, we have previously shown that it can be used to rapidly (<1 h) detect the presence of blood infections in whole blood samples from patients suspected of sepsis regardless of whether or not they have positive blood cultures<sup>23</sup>. Use of the FcMBL ELLeCSA in conjunction with other tools, such as C-reactive protein (CRP) and Procalcitonin (PCT), could help inform and assist the physician in deciding if there is an infection, whether hospitalization is critical, or whether antibiotics should be administered when a patient first enters a care center. In addition, we have found that we can combine the FcMBL capture of PAMPs with additional molecular diagnostic tools,

such as PCR, to distinguish different pathogen types based on molecular composition of the samples<sup>22</sup>.

In summary, FcMBL's ability to both bind to numerous types of infectious pathogens and capture many of the cell wall PAMPs released by these microbes when treated with antibiotics in complex biological fluids, further demonstrates the potential value of using FcMBL capture for rapid detection of bloodstream infections, even when blood cultures are negative. As a result of extending our FcMBL-based ELLeSA studies to a broader range of different pathogens, we determined a higher (87%) binding efficiency than that observed in preliminary studies. We also now better understand how FcMBL interacts with different bacterial strains of the same species when mechanically disrupted or fragmented by antibiotics. To our knowledge, this is the broadest range and largest number of pathogens and PAMPs that have been shown can be detected by a single blood opsonin or lectin. The ability of FcMBL to detect cell wall fragments also synergizes well with standard of care antibiotic therapy, and it's broad-range pathogen capture and detection can be leveraged to develop a wide range of infectious disease diagnostics, therapeutics, and vaccines.

## Methods

### Pathogen sources

Bacteria, fungi, viral antigens, parasites, and bacterial cell wall antigens were obtained from a multitude of sources which include: Abcam (Cambridge, USA), AERAS (Rockville, USA), American Type Culture Collection (Manassas, USA), Biodefense and Emerging Infections Resources (BEI Resources) (Manassas, USA), Boston Children's Hospital (Boston, USA), Brigham and Women's Hospital Crimson Biorepository (Boston, USA), Hospital Joseph-Ducuing (Toulouse, France), Sigma-Aldrich (St. Louis, USA), Sino Biological (Beijing, China), and The Native Antigen Company (Oxford, United Kingdom).

In addition, the following defined strains were used in this study: *Streptococcus pneumoniae* 3 (ATCC 6303), *Streptococcus pneumoniae* 19A (ATCC 700674), *Escherichia coli* 41949 (Multiple O antigens:H26) (Crimson Biorepository), and *Escherichia coli* RS218 (NMEC O18:H7) (Kindly provided by James R. Johnson from the University of Minnesota). LPS from *Serratia marcescens* (L6136), *Klebsiella pneumoniae* (L4268), *Salmonella enterica* serovar enteritidis (L6011), and LTA from *Enterococcus hirae* (L4015), *Staphylococcus aureus* (L2515), and *Streptococcus pyogenes* (L3140) were purchased through Sigma-Aldrich (St. Louis, USA). *Mycobacterium tuberculosis* H37Rv components, which include lipoarabinomannan (LAM, NR-14848) and phosphatidylinositol mannoside 1,2 and 6 (PIM<sub>1,2</sub>, NR-14846 and PIM<sub>6</sub>, NR-14847), were obtained from BEI Resources (Manassas, USA). Parasites, *Trichomonas vaginalis* (TV01-1000) and *Plasmodium falciparum* Circumsporozoite protein (ab73857), were purchased from The Native Antigen Company (Oxford, UK) and Abcam (Cambridge, USA), respectively. Viral antigens: Chikungunya E1 (CHIKV-E1), Dengue serotype 1 VLP (DENV1-VLP), Ebola GP1 (EBOVKW95-GP1-100), Tick-borne Encephalitis NS1 (TBEV-NS1-100), and Zika lysate (ZIKV-LYS-100) were purchased from The Native Antigen Company (Oxford, UK). Cytomegalovirus (CMV) was

kindly provided by Brigham & Women's Hospital (Boston, USA). Influenza H1N1 HA (11055-VNAB), Influenza H1N1 NA (11058-VNAHC), and Respiratory syncytial virus (RSV) glycoprotein g (11070-V08B2) were purchased from Sino Biological (Beijing, China). Human immunodeficiency virus (HIV) gp120 (ab174070) was purchased from Abcam (Cambridge, USA).

### Preparation of bacteria

Bacteria were subcultured in RPMI (Thermo Fisher Scientific, USA) 10 mM glucose to a McFarland of 0.5 (equivalent to 10<sup>8</sup> CFU/ml) (Becton Dickinson, USA). Bacteria were grown to this logarithmic phase to ensure cell viability, and RPMI was used because it does not contain interfering MBL-binding nutrients, such as yeast extract. The culture was then split—live bacteria were kept on ice while the other half were fragmented. Fragmented bacterial PAMPs were generated using antibiotics or mechanical disruption. Antibiotic treatment included the appropriate use of one of the following: cefepime (NDC 25021-121-20), ceftriaxone (NDC 60505-6104-4), meropenem (NDC 63323-507-20), amikacin (NDC 0703-9040-03), gentamicin (NDC 63323-010-02), or vancomycin (NDC 0409-4332-49), at ≤1 mg/ml for ≥4 hours at 37°C 225 rpm. Mechanical disruption consisted of bead mill treatment at 30 Hz for 10 min using 0.1 mm zirconia/silica beads (BioSpec Products, USA) in a Mixer Mill MM 400 machine (Verder Scientific, Inc., USA). Testing by FcMBL ELLeSA was performed on titers of live bacteria at ≤10<sup>7</sup> CFU/ml, and on the same concentration of bacteria after fragmentation. LPS endotoxin from Gram-negative bacteria was quantified using a limulus amoebocyte lysate (LAL) assay ([Endosafe®] Charles River Laboratories, USA).

### Preparation of fungi, viral antigens, parasites, and bacterial cell wall antigens

Fungi species were primarily subcultured in RPMI 10 mM glucose; however other media, such as potato dextrose broth (Teknova, USA), were used to facilitate growth. In these cases, the fungal cells were pelleted at 3,000 × g for 5 minutes at 22°C (Eppendorf 5424, USA), washed 3x in 50 mM Tris-HCl, 150 mM NaCl, 0.05% Tween-20, 5 mM CaCl<sub>2</sub>, pH 7.4 (TBST 5 mM CaCl<sub>2</sub>) (Boston BioProducts, USA) to remove residual growth media, and then resuspended in TBST 5 mM CaCl<sub>2</sub>. Testing by FcMBL ELLeSA was performed on titers of live fungi at ≤10<sup>7</sup> CFU/ml. Purified or inactivated viral antigens, parasites, and bacterial antigens were resuspended or diluted in TBST 5 mM CaCl<sub>2</sub> for testing directly by FcMBL ELLeSA. *Trichomonas vaginalis* was screened at 0.46 µg/mL and *Plasmodium falciparum* Circumsporozoite protein was screened at 50 µg/mL. Concentrations of viral antigens tested are indicated in the legend of Figure 7.

### Antibodies

Anti-protein A (catalog number ab19483) was purchased from Abcam (Cambridge, USA).

### Biological reagents

Fresh whole human blood (sodium heparin) was purchased from Research Blood Components, LLC. (Boston, USA), and normal single donor human urine (IR100007) was purchased from Innovative Research Inc. (Novi, USA).

## FcMBL ELLeCSA

The key metric used to quantify direct FcMBL binding to pathogen-associated molecular patterns (PAMPs) from bacteria, fungi, viral antigens, parasites, and bacterial cell wall antigens is a 96 well ELLeCSA, which has been previously published<sup>23</sup>. The assay uses FcMBL coated superparamagnetic beads (1  $\mu$ m MyOne Dynabead [Thermo Fisher Scientific, USA]) where FcMBL, biotinylated at the N termini of the Fc protein using an N-terminal amino-oxy reaction, is coupled to streptavidin beads in an oriented array (Figure 1A). Each sample was screened using 100  $\mu$ l or 200  $\mu$ l of test sample added to 900  $\mu$ l or 800  $\mu$ l of assay solution respectively, which contains 5  $\mu$ g of the FcMBL beads at 5 mg/ml and 10 mM glucose in TBST 5 mM CaCl<sub>2</sub> to total 1 ml (50  $\mu$ l heparin is added if testing blood). PAMPs in the test sample are captured by FcMBL for 20 minutes at 22°C 950 rpm in a plate shaker (Eppendorf, USA). Using an automated magnetic-handling system (KingFisher™ Flex [not shown]) (Thermo Fisher Scientific, USA), captured PAMPs are washed two times using TBST 5 mM CaCl<sub>2</sub>, and detected with human MBL (Sino Biological, China) linked to horseradish peroxidase (MBL-HRP). Non-specific MBL-HRP is removed by 4 washes in TBST 5 mM CaCl<sub>2</sub>, and PAMPs are quantified with 1-step ultra tetramethylbenzidine (TMB) substrate (Thermo Fisher Scientific, USA). Finally, the reaction is quenched with 1 M sulfuric acid and results are read at the optical density 450 nm wavelength. Quantification of bound PAMPs is determined using a standard curve generated using yeast mannan (catalog number M3640, Sigma-Aldrich, USA) in TBST 5 mM CaCl<sub>2</sub>—a known target for MBL (1 ng/ml mannan = 1 PAMP unit)<sup>43</sup>. PAMP units are multiplied back by the dilution factor of the test sample volume to give PAMPs/ml. Previously, a receiver operating characteristic comparison was performed for a small pilot sepsis patient study in which sepsis blood was analyzed versus non-infected controls to determine an optimal ELLeCSA threshold of 0.45 PAMP units<sup>23</sup>. Therefore, in this study we define and report FcMBL binding to a sample as having  $\geq 5$  PAMPs/ml. To confirm specificity of FcMBL binding, a negative control (FcMBL null) was used alongside FcMBL in the ELLeCSA. FcMBL null was engineered by introducing two residue mutations, E347A and N349A, into aktFcMBL (GenBank accession: KJ710775.1) to remove functional binding of the CRD of MBL. FcMBL null was purified and used to coat beads in the same fashion as FcMBL described above for direct comparison. FcMBL null beads did not support any binding to yeast mannan, and supported less than half of binding to *S. aureus* compared with FcMBL, as the Fc portion of FcMBL binds *S. aureus* protein A<sup>22</sup> (Supplementary Figure 1)<sup>29</sup>.

## Statistical analysis

Data analyses on FcMBL binding to Gram-positive and Gram-negative live and fragmented bacterial isolates was performed using the statistical R language. Categorical variables are described as frequency (percentage). Comparisons between nominal dichotomous variables were performed with Pearson's chi-square, when all contingency table cells were  $>5$ . Results were deemed as statistically significant when the null hypothesis could be rejected with  $>95\%$  confidence. An unpaired two-tailed t-test

was performed on FcMBL and FcMBL null binding to *S. aureus* using GraphPad Prism 7.0b (OS X). A p-value of  $< 0.05$  was determined to be statistically significant. Dataset analysis is indicated in the figure legends.

## Scanning electron microscopy

For visualization of live and fragmented bacteria on FcMBL beads, bacteria were captured with 128 nm FcMBL beads (Ademtech, France), spun down onto 13-mm coverslips and fixed with 2.5% glutaraldehyde in 0.1 M sodium cacodylate buffer (Electron Microscopy Sciences, USA) for 1 hour. Coverslips were incubated in 1% osmium tetroxide in 0.1 M sodium cacodylate (Electron Microscopy Sciences, USA) for 1 hour. Ascending grades of ethanol dehydrated the sample before being chemically dried with hexamethyldisilazane (Electron Microscopy Sciences, USA). Samples were then placed in a desiccator overnight. Dried samples were mounted on aluminum stubs, sputter-coated with a thin layer of gold particles, and imaged using a Zeiss Supra55VP microscope.

## Data availability

### Underlying data

Data for this study on the broad-spectrum capture of clinical pathogens using engineered Fc-mannose-binding lectin (FcMBL) enhanced by antibiotic treatment are available from OSF. DOI: <https://doi.org/10.17605/OSF.IO/GW4X729>.

### Extended data

**Supplementary figure 1. FcMBL and FcMBL null binding to *S. aureus*.** 10<sup>6</sup> CFU/ml live *S. aureus* without and with treatment of 1  $\mu$ g/ml anti-protein A, detected by ELLeCSA. Anti-protein A antibody blocks the Fc-mediated binding of FcMBL null but has no significant effect on FcMBL binding. \*\*p-value  $< 0.01$ ; \*p-value  $< 0.05$ ; unpaired two-tailed t-test; NS: not significant. DOI: <https://doi.org/10.17605/OSF.IO/GW4X729>.

Data are available under the terms of the [Creative Commons Zero "No rights reserved" data waiver](#) (CC0 1.0 Public domain dedication).

## Grant information

This work was supported by the Defense Advanced Research Projects Agency (DARPA) grants N66001-11-1-4180 and W911NF-16-C-0050, a Global Health Innovation Partnership (GHIP) grant from the Bill and Melinda Gates Foundation, and the Wyss Institute for Biologically Inspired Engineering.

*The funders had no role in study design, data collection and analysis, decision to publish, or preparation of the manuscript.*

## Acknowledgments

We thank Vasanth Chandrasekhar for assistance in making the FcMBL beads, Shanda Lightbown for SEM images of *S. pneumoniae* 3, and Seth Kroll for image processing.

## References

1. Takahashi K: **Mannose-binding lectin and the balance between immune protection and complication.** *Expert Rev Anti Infect Ther.* 2011; **9**(12): 1179–90. [PubMed Abstract](#) | [Publisher Full Text](#) | [Free Full Text](#)
2. Kilpatrick DC: **Mannan-binding lectin: clinical significance and applications.** *Biochim Biophys Acta.* 2002; **1572**(2–3): 401–13. [PubMed Abstract](#) | [Publisher Full Text](#)
3. Nuytincq L, Shapiro F: **Mannose-binding lectin: laying the stepping stones from clinical research to personalized medicine.** *Per Med.* 2004; **1**(1): 35–52. [PubMed Abstract](#) | [Publisher Full Text](#)
4. Eisen DP, Minchinton RM: **Impact of mannose-binding lectin on susceptibility to infectious diseases.** *Clin Infect Dis.* 2003; **37**(11): 1496–505. [PubMed Abstract](#) | [Publisher Full Text](#)
5. Larvie M, Shoup T, Chang W, et al.: **Mannose-binding lectin binds to amyloid  $\beta$  protein and modulates inflammation.** *J Biomed Biotechnol.* 2012; **2012**: 929803. [PubMed Abstract](#) | [Publisher Full Text](#) | [Free Full Text](#)
6. Mogensen TH: **Pathogen recognition and inflammatory signaling in innate immune defenses.** *Clin Microbiol Rev.* 2009; **22**(2): 240–73. [PubMed Abstract](#) | [Publisher Full Text](#) | [Free Full Text](#)
7. Saito T, Owen DM, Jiang F, et al.: **Innate immunity induced by composition-dependent RIG-I recognition of hepatitis C virus RNA.** *Nature.* 2008; **454**(7203): 289–99. [PubMed Abstract](#) | [Publisher Full Text](#) | [Free Full Text](#)
8. Kang HJ, Lee SM, Lee HH, et al.: **Mannose-binding lectin without the aid of its associated serine proteases alters lipopolysaccharide-mediated cytokine/chemokine secretion from human endothelial cells.** *Immunology.* 2007; **122**(3): 335–42. [PubMed Abstract](#) | [Publisher Full Text](#) | [Free Full Text](#)
9. Wallis R: **Interactions between mannose-binding lectin and MASPs during complement activation by the lectin pathway.** *Immunobiology.* 2007; **212**(4–5): 289–99. [PubMed Abstract](#) | [Publisher Full Text](#) | [Free Full Text](#)
10. Degn SE, Thiel S: **Humoral pattern recognition and the complement system.** *Scand J Immunol.* 2013; **78**(2): 181–93. [PubMed Abstract](#) | [Publisher Full Text](#)
11. Fraser IP, Koziel H, Ezekowitz RA: **The serum mannose-binding protein and the macrophage mannose receptor are pattern recognition molecules that link innate and adaptive immunity.** *Semin Immunol.* 1998; **10**(5): 363–72. [PubMed Abstract](#) | [Publisher Full Text](#)
12. Dommett RM, Klein N, Turner MW: **Mannose-binding lectin in innate immunity: past, present and future.** *Tissue Antigens.* 2006; **68**(3): 193–209. [PubMed Abstract](#) | [Publisher Full Text](#)
13. Polotsky VY, Belisle JT, Mikusova K, et al.: **Interaction of human mannose-binding protein with *Mycobacterium avium*.** *J Infect Dis.* 1997; **175**(5): 1159–68. [PubMed Abstract](#) | [Publisher Full Text](#)
14. Townsend R, Read RC, Turner MW, et al.: **Differential recognition of obligate anaerobic bacteria by human mannose-binding lectin.** *Clin Exp Immunol.* 2001; **124**(2): 223–8. [PubMed Abstract](#) | [Publisher Full Text](#) | [Free Full Text](#)
15. Neth O, Jack DL, Dodds AW, et al.: **Mannose-binding lectin binds to a range of clinically relevant microorganisms and promotes complement deposition.** *Infect Immun.* 2000; **68**(2): 688–93. [PubMed Abstract](#) | [Publisher Full Text](#) | [Free Full Text](#)
16. van Emmerik LC, Kuijper EJ, Fijen CA, et al.: **Binding of mannan-binding protein to various bacterial pathogens of meningitis.** *Clin Exp Immunol.* 1994; **97**(3): 411–6. [PubMed Abstract](#) | [Publisher Full Text](#) | [Free Full Text](#)
17. Saifuddin M, Hart ML, Gewurz H, et al.: **Interaction of mannose-binding lectin with primary isolates of human immunodeficiency virus type 1.** *J Gen Virol.* 2000; **81**(Pt 4): 949–55. [PubMed Abstract](#) | [Publisher Full Text](#)
18. Klabunde J, Berger J, Jensenius JC, et al.: ***Schistosoma mansoni*: adhesion of mannan-binding lectin to surface glycoproteins of cercariae and adult worms.** *Exp Parasitol.* 2000; **95**(4): 231–9. [PubMed Abstract](#) | [Publisher Full Text](#)
19. Kuipers S, Aerts PC, van Dijk H: **Differential microorganism-induced mannose-binding lectin activation.** *FEMS Immunol Med Microbiol.* 2003; **36**(1–2): 33–9. [PubMed Abstract](#) | [Publisher Full Text](#)
20. Kang JH, Super M, Yung CW, et al.: **An extracorporeal blood-cleansing device for sepsis therapy.** *Nat Med.* 2014; **20**(10): 1211–6. [PubMed Abstract](#) | [Publisher Full Text](#)
21. Didar TF, Cartwright MJ, Rottman M, et al.: **Improved treatment of systemic blood infections using antibiotics with extracorporeal opsonin hemoadsorption.** *Biomaterials.* 2015; **67**: 382–92. [PubMed Abstract](#) | [Publisher Full Text](#)
22. Bicart-See A, Rottman M, Cartwright M, et al.: **Rapid Isolation of *Staphylococcus aureus* Pathogens from Infected Clinical Samples Using Magnetic Beads Coated with Fc-Mannose Binding Lectin.** *PLoS One.* 2016; **11**(6): e0156287. [PubMed Abstract](#) | [Publisher Full Text](#) | [Free Full Text](#)
23. Cartwright M, Rottman M, Shapiro NI, et al.: **A Broad-Spectrum Infection Diagnostic that Detects Pathogen-Associated Molecular Patterns (PAMPs) in Whole Blood.** *EBioMedicine.* 2016; **9**: 217–227. [PubMed Abstract](#) | [Publisher Full Text](#) | [Free Full Text](#)
24. Magill SS, Edwards JR, Bamberg W, et al.: **Multistate point-prevalence survey of health care-associated infections.** *N Engl J Med.* 2014; **370**(13): 1198–208. [PubMed Abstract](#) | [Publisher Full Text](#) | [Free Full Text](#)
25. Rosenfeld Y, Shai Y: **Lipopolysaccharide (Endotoxin)-host defense antibacterial peptides interactions: role in bacterial resistance and prevention of sepsis.** *Biochim Biophys Acta.* 2006; **1758**(9): 1513–22. [PubMed Abstract](#) | [Publisher Full Text](#)
26. Sharma P, Dube D, Singh A, et al.: **Structural basis of recognition of pathogen-associated molecular patterns and inhibition of proinflammatory cytokines by camel peptidoglycan recognition protein.** *J Biol Chem.* 2011; **286**(18): 16208–17. [PubMed Abstract](#) | [Publisher Full Text](#) | [Free Full Text](#)
27. Polotsky VY, Fischer W, Ezekowitz RA, et al.: **Interactions of human mannose-binding protein with lipoteichoic acids.** *Infect Immun.* 1996; **64**(1): 380–3. [PubMed Abstract](#) | [Free Full Text](#)
28. Ip WK, Takahashi K, Moore KJ, et al.: **Mannose-binding lectin enhances Toll-like receptors 2 and 6 signaling from the phagosome.** *J Exp Med.* 2008; **205**(1): 169–181. [PubMed Abstract](#) | [Publisher Full Text](#) | [Free Full Text](#)
29. Ingber D: **"Broad-Spectrum Capture of Clinical Pathogens Using Engineered Fc-Mannose-Binding Lectin (FcMBL) Enhanced by Antibiotic Treatment."** *OSF.* 2019. <http://www.doi.org/10.17605/OSF.IO/GW4X7>
30. Lynch NJ, Roscher S, Hartung T, et al.: **L-ficolin specifically binds to lipoteichoic acid, a cell wall constituent of Gram-positive bacteria, and activates the lectin pathway of complement.** *J Immunol.* 2004; **172**(2): 1198–202. [PubMed Abstract](#) | [Publisher Full Text](#)
31. Vergne I, Gilleron M, Nigou J: **Manipulation of the endocytic pathway and phagocyte functions by *Mycobacterium tuberculosis* lipoarabinomannan.** *Front Cell Infect Microbiol.* 2015; **4**: 187. [PubMed Abstract](#) | [Publisher Full Text](#) | [Free Full Text](#)
32. Rojas RE, Thomas JJ, Gehring AJ, et al.: **Phosphatidylinositol mannoside from *Mycobacterium tuberculosis* binds alpha5beta1 integrin (VLA-5) on CD4+ T cells and induces adhesion to fibronectin.** *J Immunol.* 2006; **177**(5): 2959–68. [PubMed Abstract](#) | [Publisher Full Text](#)
33. Iskandar A, Nursiloningrum E, Arthamin MZ, et al.: **The Diagnostic Value of Urine Lipoarabinomannan (LAM) Antigen in Childhood Tuberculosis.** *J Clin Diagn Res.* 2017; **11**(3): EC32–EC35. [PubMed Abstract](#) | [Publisher Full Text](#) | [Free Full Text](#)
34. Sakamuri RM, Price DN, Lee M, et al.: **Association of lipoarabinomannan with high density lipoprotein in blood: implications for diagnostics.** *Tuberculosis (Edinb).* 2013; **93**(3): 301–7. [PubMed Abstract](#) | [Publisher Full Text](#) | [Free Full Text](#)
35. Lawn SD: **Point-of-care detection of lipoarabinomannan (LAM) in urine for diagnosis of HIV-associated tuberculosis: a state of the art review.** *BMC Infect Dis.* 2012; **12**: 103. [PubMed Abstract](#) | [Publisher Full Text](#) | [Free Full Text](#)
36. Boonyarattanakalin S, Liu X, Michieletti M, et al.: **Chemical synthesis of all phosphatidylinositol mannoside (PIM) glycans from *Mycobacterium tuberculosis*.** *J Am Chem Soc.* 2008; **130**(49): 16791–9. [PubMed Abstract](#) | [Publisher Full Text](#)
37. Kallert S, Zenk SF, Walther P, et al.: **Liposomal delivery of lipoarabinomannan triggers *Mycobacterium tuberculosis* specific T-cells.** *Tuberculosis (Edinb).* 2015; **95**(4): 452–62. [PubMed Abstract](#) | [Publisher Full Text](#)
38. Shin HJ, Franco LH, Nair VR, et al.: **A baculovirus-conjugated mimotope vaccine targeting *Mycobacterium tuberculosis* lipoarabinomannan.** *PLoS One.* 2017; **12**(10): e0185945. [PubMed Abstract](#) | [Publisher Full Text](#) | [Free Full Text](#)
39. Rodriguez ME, Loyd CM, Ding X, et al.: ***Mycobacterial* phosphatidylinositol mannoside 6 (PIM6) up-regulates TCR-triggered HIV-1 replication in CD4+ T cells.** *PLoS One.* 2013; **8**(11): e80938. [PubMed Abstract](#) | [Publisher Full Text](#) | [Free Full Text](#)
40. Cox MM, Izikson R, Post P, et al.: **Safety, efficacy, and immunogenicity of Flublok in the prevention of seasonal influenza in adults.** *Ther Adv Vaccines.* 2015; **3**(4): 97–108. [PubMed Abstract](#) | [Publisher Full Text](#) | [Free Full Text](#)
41. Schiller JT, Castellsagué X, Garland SM: **A review of clinical trials of human papillomavirus prophylactic vaccines.** *Vaccine.* 2012; **30** Suppl 5: F123–F138. [PubMed Abstract](#) | [Publisher Full Text](#) | [Free Full Text](#)
42. Cunningham AL, Lal H, Kovac M, et al.: **Efficacy of the Herpes Zoster Subunit Vaccine in Adults 70 Years of Age or Older.** *N Engl J Med.* 2016; **375**(11): 1019–1032. [PubMed Abstract](#) | [Publisher Full Text](#)
43. Super M, Thiel S, Lu J, et al.: **Association of low levels of mannan-binding protein with a common defect of opsonisation.** *Lancet.* 1989; **2**(8674): 1236–9. [PubMed Abstract](#) | [Publisher Full Text](#)

# Open Peer Review

Current Peer Review Status:  

---

## Version 1

Reviewer Report 29 May 2019

<https://doi.org/10.5256/f1000research.19079.r47919>

© 2019 Swierzko A. This is an open access peer review report distributed under the terms of the [Creative Commons Attribution Licence](#), which permits unrestricted use, distribution, and reproduction in any medium, provided the original work is properly cited.



### Anna Swierzko

Laboratory of Immunobiology of Infections, Institute of Medical Biology, Polish Academy of Sciences, Lodz, Poland

Dr B. T. Seiler and co-workers present the next application of magnetic beads coated with genetically engineered form of the human MBL CRD linked to IgG Fc domain (FcMBL beads). Previously, the same group of researchers reported usefulness of that invention (in a form of biospleen or extracorporeal hemoadsorption device) in the efficient clearance of microorganisms' cells as well as their PAMPs from blood. The presented manuscript is the valuable extension of work by Cartwright *et al.* (2016)<sup>1</sup>, where FcMBL-beads were used for the rapid detection of broad spectrum pathogens in the whole blood (ELLecSA). The authors demonstrated interaction of FcMBL with bacteria, fungi and parasites. The authors confirmed also their finding that antibiotic treatment or mechanical disruption increases FcMBL-binding. No case of decreased binding after antibiotic treatment or bead milling was observed, however some isolates, even after disruption were still not recognised by FcMBL. Among them there were *Enterococcus faecalis* and *Proteus* isolates. These findings are in agreement with previous reports by Geiss-Liebisch *et al.* (2012)<sup>2</sup> and Man-Kupisinska *et al.* (2018)<sup>3</sup>. Geiss-Liebisch demonstrated that wall teichoic acids and rhamnopolysaccharide of *E. faecalis* prevent peptidoglycan from MBL binding. Whereas Man-Kupisinska, despite observed common interaction of MBL with the conservative inner core of numerous enterobacterial lipopolysaccharides, did not find MBL interaction with 42 of 70 tested *Proteus vulgaris*, *Proteus mirabilis* and *Proteus penneri* isolated LPSs. The authors should consider including this information into the manuscript.

The authors also presented ability of FcMBL to capture isolated bacterial and viral antigens. They also described detection of *M. tuberculosis* mannosylated LAM in spiked blood and urine. Surprisingly, the sensitivity in urine was markedly reduced, not only in comparison to buffer but also in comparison to blood. Previously the authors described that there are inhibitors (probably immunoglobulins) in joint fluids preventing FcMBL interaction with bacteria. Treatment with proteases and hyaluronidase was proposed to improve pathogen capture. Since rapid and sensitive method of LAM detection in urine could be of big importance in TB diagnosis, it would be important to identify these inhibitors.

This is a very important and well done study. FcMBL-coated beads are demonstrated as a sensitive alternative to the time consuming and often false negative blood culture. It can also be a fantastic tool,

helpful in the screening and simple identification of MBL ligands (for example – after SDS-PAGE-WB and immunostaining with PAMP-specific antibodies).

#### Minor points

1. Mannosylated LAM *Mycobacterium tuberculosis* H37Rv strain should be described as “ManLAM”
2. Page 4: probably should be “including multiple isolates” instead of “including multiple species”
3. On the page 4, referring to Table 1 - the authors stated that they tested FcMBL binding to 12 different species of fungi. However, in Table 1 only 3 isolates belonging to 3 species are listed and in Figure 4 – results of FcMBL interaction with 13 fungi isolates is presented. It is confusing.
4. On page 3 the Authors stated that pathogens were treated with antibiotic within 4 hours, however according to the method section – “bacteria were treated with antibiotics for ≥4 hours”. It should be clarified.

#### References

1. Cartwright M, Rottman M, Shapiro NI, Seiler B, Lombardo P, Gamini N, Tomolonis J, Watters AL, Waterhouse A, Leslie D, Bolgen D, Graveline A, Kang JH, Didar T, Dimitrakakis N, Cartwright D, Super M, Ingber DE: A Broad-Spectrum Infection Diagnostic that Detects Pathogen-Associated Molecular Patterns (PAMPs) in Whole Blood. *EBioMedicine*. 2016; **9**: 217-227 [PubMed Abstract](#) | [Publisher Full Text](#)
2. Geiss-Liebisch S, Rooijackers SH, Beczala A, Sanchez-Carballo P, Kruszynska K, Repp C, Sakinc T, Vinogradov E, Holst O, Huebner J, Theilacker C: Secondary cell wall polymers of *Enterococcus faecalis* are critical for resistance to complement activation via mannose-binding lectin. *J Biol Chem*. 2012; **287** (45): 37769-77 [PubMed Abstract](#) | [Publisher Full Text](#)
3. Man-Kupisinska A, Swierzko AS, Maciejewska A, Hoc M, Rozalski A, Siwinska M, Lugowski C, Cedzynski M, Lukasiewicz J: Interaction of Mannose-Binding Lectin With Lipopolysaccharide Outer Core Region and Its Biological Consequences. *Front Immunol*. 2018; **9**: 1498 [PubMed Abstract](#) | [Publisher Full Text](#)

**Is the work clearly and accurately presented and does it cite the current literature?**

Yes

**Is the study design appropriate and is the work technically sound?**

Yes

**Are sufficient details of methods and analysis provided to allow replication by others?**

Yes

**If applicable, is the statistical analysis and its interpretation appropriate?**

Yes

**Are all the source data underlying the results available to ensure full reproducibility?**

Yes

**Are the conclusions drawn adequately supported by the results?**

Yes

**Competing Interests:** No competing interests were disclosed.

**Reviewer Expertise:** Immunology, Microbiology.

**I have read this submission. I believe that I have an appropriate level of expertise to confirm that it is of an acceptable scientific standard.**

Reviewer Report 28 January 2019

<https://doi.org/10.5256/f1000research.19079.r43622>

© 2019 Eisen D. This is an open access peer review report distributed under the terms of the [Creative Commons Attribution Licence](#), which permits unrestricted use, distribution, and reproduction in any medium, provided the original work is properly cited.



**Damon Eisen** 

James Cook University, Townsville, Australia

The authors, who are the inventors of the FcMBL capture assay, have undertaken rigorous experimental work to produce a clinically oriented paper that extends the range and numbers of microbes tested in prior publications.

The current publication describes the detection of bacteria, fungi, parasites and viral antigens by the enzyme-linked lectin sorbent assay (ELLeSA). Microbiologically relevant quantities of these microbes were tested *in vitro* and high rates of detection by ELLeSA are reported. As before, fragmentation of bacteria using antibiotics and physical fragmentation increased the numbers of bacteria detected.

The mechanisms of this increased sensitivity of detection were explored by the quantification of FcMBL-binding to the major virulence determinants of gram-negative and gram-positive bacteria. Greater sensitivity of binding to LPS was shown compared with LTA. This result provides some explanation for FcMBL's failure to detect *E. faecalis*.

The current publication does not include any further investigation of patients with the sepsis syndrome relying on the author's prior work to imply that a broader range of bacterial causes of sepsis will be detected. This is a reasonable assumption.

Further work using the same *in vitro* techniques could incorporate assessment of FcMBL's detection of rickettsia, leptospire and treponemes. These bacteria all cause diseases that are predominantly diagnosed by serology. Expedited diagnosis of blood stream or central nervous system infection would be clinically beneficial and direct appropriate antimicrobial treatment in patients with appropriate epidemiological characteristics. This could be particularly relevant to use of FcMBL technology as part of biodefence.

As the authors emphasise, the use of FcMBL can only indicate the presence of a microbial pathogen in the bloodstream due to the non-specific characteristics of binding to PAMPs. A positive ELLeSA may provide clinicians confidence that a patient presenting with the sepsis-syndrome has an infectious cause. Further testing in such patients will give additional information on the validity of the test and may provide additional encouragement for its incorporation in a microbiological testing algorithm.

**Is the work clearly and accurately presented and does it cite the current literature?**

Yes

**Is the study design appropriate and is the work technically sound?**

Yes

**Are sufficient details of methods and analysis provided to allow replication by others?**

Yes

**If applicable, is the statistical analysis and its interpretation appropriate?**

Yes

**Are all the source data underlying the results available to ensure full reproducibility?**

Yes

**Are the conclusions drawn adequately supported by the results?**

Yes

**Competing Interests:** No competing interests were disclosed.

**Reviewer Expertise:** Infectious Diseases physician Clinical scientist with extensive history of MBL biology research.

**I have read this submission. I believe that I have an appropriate level of expertise to confirm that it is of an acceptable scientific standard.**

---

The benefits of publishing with F1000Research:

- Your article is published within days, with no editorial bias
- You can publish traditional articles, null/negative results, case reports, data notes and more
- The peer review process is transparent and collaborative
- Your article is indexed in PubMed after passing peer review
- Dedicated customer support at every stage

For pre-submission enquiries, contact [research@f1000.com](mailto:research@f1000.com)

**F1000Research**