

Antineutrophilic cytoplasmic antibody-associated vasculitis with hypocomplementemia has a higher incidence of serious organ damage and a poor prognosis

Shoichi Fukui, MD^a, Naoki Iwamoto, MD, PhD^a, Masataka Umeda, MD^a, Ayako Nishino, MD^a, Yoshikazu Nakashima, MD, PhD^a, Tomohiro Koga, MD, PhD^a, Shin-ya Kawashiri, MD, PhD^{a,b}, Kunihiro Ichinose, MD, PhD^a, Yasuko Hirai, MD, PhD^a, Mami Tamai, MD, PhD^a, Hideki Nakamura, MD, PhD^a, Tomoki Origuchi, MD, PhD^{a,c}, Shuntaro Sato, MS^d, Atsushi Kawakami, MD, PhD^{a,*}

Abstract

A relationship between antineutrophilic cytoplasmic antibody (ANCA)-associated vasculitis (AAV) and complement has been shown, and complement has an important role in the pathogenesis of AAV. The clinical characteristics of AAV with hypocomplementemia still remain unclear.

We conducted an observational study of 81 patients with AAV (median onset age 71 years; 58% female). Using medical records, we analyzed the patients' baseline variables, laboratory data, clinical symptoms, and therapeutic outcomes after treatments including episodes of relapses, initiation of dialysis, and death. We defined hypocomplementemia as the state in which at least one of the following was lower than the lower limit of the normal range: complement 3 (C3), complement 4 (C4), and total complement activity (CH50).

Sixteen patients (20%) had hypocomplementemia at their diagnosis of AAV. Compared to the AAV patients without hypocomplementemia (n=65), those with hypocomplementemia had significantly higher rates of the occurrence of skin lesions (8 [50%] vs. 8 [12%], $P=0.002$), diffuse alveolar hemorrhage (DAH) (6 [38%] vs. 5 [8%], $P=0.006$), and thrombotic microangiopathy (TMA) (3 [19%] vs. 0 [0%], $P=0.007$). The AAV patients with hypocomplementemia had significantly lower platelet levels (16.5×10^4 vs. 24.9×10^4 cells/ μ L, $P=0.023$) compared to those without hypocomplementemia. More positive immune complex deposits in renal biopsy specimens were seen in the AAV patients with hypocomplementemia than in those without hypocomplementemia (4 [80%] vs. 2 [18%], $P=0.036$). Assessed by a log-rank test, hypocomplementemia at disease onset was significantly associated with death ($P=0.033$).

Hypocomplementemia in AAV at the disease onset was a risk factor for the serious organ damage, and a life prognostic factor. It is thus very important to pay attention to the levels of complement at the diagnosis of AAV.

Abbreviations: AAV = ANCA-associated vasculitis, ANCA = antineutrophilic cytoplasmic antibody, DAH = diffuse alveolar hemorrhage, EGPA = eosinophilic granulomatous polyangiitis, GPA = granulomatous polyangiitis, MAC = membrane-attack complex, MPA = microscopic polyangiitis, MPO = myeloperoxidase, RLV = renal limited vasculitis, RPGN = rapidly progressive glomerulonephritis, SLE = systemic lupus erythematosus, TMA = thrombotic microangiopathy.

Keywords: complement, diffuse alveolar hemorrhage, hypocomplementemia, prognosis, relapse, thrombotic microangiopathy

Editor: Ming Zhang.

Authors' contributions: SF drafted the manuscript and made substantial contributions to the concept and design with the assistance and supervision of NI; SF, NI, MU, AN, YN, TK, SK, KI, YH, MT, HN, TO, and AK treated the patients and collected the primary data; SF conducted the statistical analyses with the assistance and supervision of SS, who was the biostatistician; NI, MU, AN, YN, TK, SK, KI, YH, MT, HN, TO, SS, and AK critically revised the manuscript; AK supervised this entire study and gave final approval of the article; all authors read and approved the final manuscript.

All authors have no funding regarding this research.

The authors declare that there are no conflicts of interest.

Supplemental Digital Content is available for this article.

^a Department of Immunology and Rheumatology, ^b Department of Public Health, ^c Department of Rehabilitation Sciences, Unit of Translational Medicine, Nagasaki University Graduate School of Biomedical Sciences, ^d Nagasaki University Hospital Clinical Research Center, Nagasaki, Japan..

* Correspondence: Dr. Atsushi Kawakami, Unit of Translational Medicine, Department of Immunology and Rheumatology, Nagasaki University Graduate School of Biomedical Sciences, 1-7-1 Sakamoto, Nagasaki 852-8501, Japan (e-mail: atsushik@nagasaki-u.ac.jp).

Copyright © 2016 the Author(s). Published by Wolters Kluwer Health, Inc. All rights reserved.

This is an open access article distributed under the Creative Commons Attribution License 4.0 (CCBY), which permits unrestricted use, distribution, and reproduction in any medium, provided the original work is properly cited.

Medicine (2016) 95:37(e4871)

Received: 1 December 2015 / Received in final form: 21 August 2016 / Accepted: 23 August 2016

<http://dx.doi.org/10.1097/MD.0000000000004871>

1. Introduction

Antineutrophilic cytoplasmic antibody (ANCA)-associated vasculitis (AAV) is known as a systemic vasculitis with unknown etiology. AAV is classified as pauci-immune small vessel vasculitis,^[1] but mild glomerular tuft staining for immunoglobulins and/or complement is sometimes found by immunofluorescence in the glomerulonephritis region.^[2]

A relationship between AAV and complement was recently demonstrated; complement has an important role in the pathogenesis of AAV.^[3] For example, *in vitro*, an alternative complement pathway was activated by ANCA-activated neutrophils,^[4] and in animal models, murine anti-myeloperoxidase (MPO) IgG-induced disease was prevented by the blockade of alternative complement pathway activation.^[5] Little information about the clinical features of AAV with hypocomplementemia in humans has been available. A clinical study of a small number of patients revealed that hypocomplementemia was associated with the patient prognosis and with a poor renal prognosis.^[6]

Considering the important role of complement in AAV as revealed by experimental research, we suspected that hypocomplementemia might be related to clinical characteristics of AAV such as organ involvement, drug response, and prognosis. In this study, we attempted to clarify the clinical characteristics of AAV patients with hypocomplementemia.

2. Patients and methods

2.1. Patients

We retrospectively reviewed the cases of all patients who were newly diagnosed with AAV between April 2000 and June 2015 at Nagasaki University Hospital, Nagasaki, Japan. All patients were diagnosed as having AAV based on the Chapel Hill Consensus Conference criteria^[1] and the European Medicines Agency algorithm.^[7] The patients' diagnoses included all types of AAV including eosinophilic granulomatous polyangiitis (EGPA), granulomatous polyangiitis (GPA), microscopic polyangiitis (MPA), and renal limited vasculitis (RLV).

Four AAV patients whose AAV was suspected to have been caused by medication were excluded. One patient who fulfilled the 1997 American College of Rheumatology classification criteria^[8] and the 2012 Systemic Lupus International Collaborating Clinics classification criteria^[9] for systemic lupus erythematosus (SLE) was excluded. A final total of 81 patients with AAV were included in the study (Fig. 1). This study was approved by the institutional review board (Institutional Review Board of Nagasaki University Hospital [NU15072753]). Informed consent was obtained from all patients.

2.2. Data collection

Using the patients' medical records, we collected the demographic and clinical characteristics including symptoms and laboratory data at diagnosis, plus the treatments for AAV and therapeutic outcomes including relapse episodes, the initiation of dialysis, and death. We defined fever as persistent body temperature $>38^{\circ}\text{C}$. Body weight loss was defined as a reduction in the patient's body weight by $>5\text{ kg}$ during the first 6 months before the diagnosis of AAV. We defined skin disease as erythema or purpura. Lesions of the ear, nose, or throat associated with AAV were diagnosed by board-certified otolaryngologists of The Oto-Rhino-Laryngological Society of Japan.

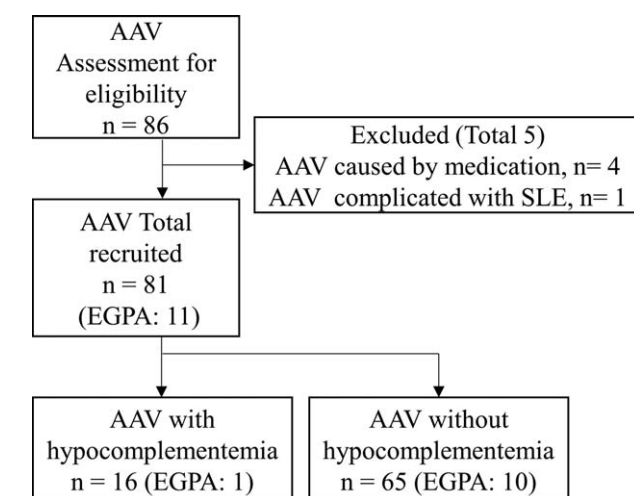


Figure 1. Flow diagram (81 patients with AAV were included in the study). AAV=antineutrophilic cytoplasmic antibody-associated vasculitis, EGPA=eosinophilic granulomatous polyangiitis.

Diffuse alveolar hemorrhage (DAH) was diagnosed based on minor or major hemoptysis and/or respiratory insufficiency together with at least 1 positive result on one of the following compatible complementary diagnostic tests: x-ray, computed tomography scan, and bronchoalveolar lavage.^[10] We diagnosed thrombotic microangiopathy (TMA) based on guidelines for the diagnosis and management of thrombotic thrombocytopenic purpura and other thrombotic microangiopathies.^[11] Rapidly progressive glomerulonephritis (RPGN) was diagnosed based on the following criteria: hematuria, proteinuria, or urine casts; estimated glomerular filtration rate $<60\text{ mL/min/1.73m}^2$; and elevated C-reactive protein or erythrocyte sedimentation rate, for suspicion of RPGN, and the worsening of renal function over a period of several weeks and hematuria, proteinuria, or urine casts suggesting glomerulonephritis.^[12]

We defined hypocomplementemia as the state in which at least one of the following was lower than the lower limit of the normal range: complement 3 (C3) (normal range 86–160 mg/dL), complement 4 (C4) (normal range 17–45 mg/dL), or total complement activity (CH50) (normal range 25–48 CH50/mL). C3 and C4 were determined by immunonephelometry and CH50 was measured according to Mayer method. The group of patients with hypocomplementemia was defined as the patients who had hypocomplementemia at disease onset. The group of patients without hypocomplementemia was defined as the patients who did not have hypocomplementemia at disease onset. Hematuria was defined as 2+ or more by urine analysis using a testing strip. Positive immune complex deposits in renal biopsy specimens were defined as 1+ or more of the glomerular immunofluorescence findings for at least of one of following: IgG, IgA, IgM, C3, C4, and C1q.

Pathological findings were assessed by board-certified pathologists of The Japanese Society of Pathology. Remission was defined as a Birmingham Vasculitis Activity Score, version 3 (BVAS), of 0 (scores range from 0 to 63, with higher scores indicating more active disease).^[13] We defined relapse as the reappearance or worsening of disease with a BVAS >0 and the involvement of at least one major organ, a life-threatening manifestation, or both.^[14]

Table 1**Demographic and clinical characteristics of total patients and patients with and without hypocomplementemia.**

Variable	Total (n=81)	With hypocomplementemia (n=16)	Without hypocomplementemia (n=65)	P*
Onset age, y	71 (63.5–77)	73 (70–79)	71 (62–77)	0.116
Females, n (%)	47 (58)	8 (50)	39 (60)	0.57
BMI, kg/m ²	21.4 (18.4–23.8)	20.7 (18.3–22.2)	21.6 (18.4–24.0)	0.60
EGPA, n (%)	11 (14)	1 (6)	10 (15)	0.68
GPA, n (%)	14 (17)	3 (19)	11 (17)	1.00
MPA, n (%)	53 (65)	12 (75)	41 (63)	0.56
RLV, n (%)	3 (4)	0 (0)	3 (5)	1.00
Manifestation, n (%)				
Fever	41 (51)	11 (69)	30 (46)	0.162
Body weight loss	14 (17)	6 (38)	8 (12)	0.027
ENT	18 (22)	4 (25)	14 (22)	0.75
Renal	54 (67)	13 (81)	41 (63)	0.24
Biopsy-proven renal disease	16 (20)	5 (31)	11 (17)	0.29
Interstitial lung disease	74 (91)	15 (94)	59 (91)	1.00
Peripheral nerve system	26 (32)	7 (44)	19 (29)	0.37
Central nerve system	7 (9)	1 (6)	6 (9)	1.00
Arthralgia	8 (10)	0 (0)	8 (12)	0.35
Skin disease	16 (20)	8 (50)	8 (12)	0.002
Diffuse alveolar hemorrhage	11 (14)	6 (38)	5 (8)	0.006
Cardiovascular disease	5 (6)	1 (6)	4 (6)	1.00
Abdominal disease	3 (4)	1 (6)	2 (3)	0.49
Rapidly progressive glomerulonephritis	34 (42)	8 (50)	26 (40)	0.57
Thrombotic microangiopathy	3 (4)	3 (19)	0 (0)	0.007

BMI = body mass index, EGPA = eosinophilic granulomatous polyangiitis, ENT = lesions of ear, nose, or throat, GPA = granulomatous polyangiitis, MPA = microscopic polyangiitis, RLV = renal limited vasculitis.
* With hypocomplementemia vs. without hypocomplementemia.

2.3. Statistical analysis

Baseline characteristics including demographics, hematologic data, serum markers, and pathological findings were compared between the patients with hypocomplementemia and those without hypocomplementemia. Variables were described with the use of frequencies for categorical variables and with the median and interquartile range (IQR) for quantitative variables. The association between variables was assessed using Fisher exact test for categorical variables and Wilcoxon rank sum test for quantitative variables.

The nonrelapse survival rate after remission and the probability of survival were estimated by the Kaplan–Meier method. The associations between the nonrelapse survival rate after remission, the probability of survival, and hypocomplementemia were evaluated by the log-rank test. All tests were 2-sided, and *P* values <0.05 were considered significant. All statistical analyses were performed using JMP Statistical Software, ver. 11 (SAS Institute, Cary, NC).

3. Results

3.1. Patient characteristics

Eighty-one patients with AAV (11 EGPA, 14 GPA, 53 MPA, and 3 renal-limited vasculitis) were included in this study. Table 1 shows the demographic and clinical characteristics of the total patient series and the patients with (*n*=16) and without (*n*=65) hypocomplementemia. All of the patients were Japanese. The median onset age was 71 years. Forty-seven patients (58%) were female.

Sixteen patients (20%) had hypocomplementemia at the diagnosis of AAV. Compared to the AAV patients without hypocomplementemia, those with hypocomplementemia had significantly higher rates of the occurrence of skin lesions (8

[50%] vs. 8 [12%], *P*=0.002), DAH (6 [38%] vs. 5 [8%], *P*=0.006), and TMA (3 [19%] vs. 0 [0%], *P*=0.007), respectively.

3.2. Laboratory data

Table 2 shows the laboratory data of the total patient series and the data of the patients with and without hypocomplementemia. The detailed level of each complement is illustrated in the Supplemental Figure, <http://links.lww.com/MD/B265>. Compared to the AAV patients without hypocomplementemia, those with hypocomplementemia had significantly lower platelet levels (16.5×10^4 vs. 24.9×10^4 cells/ μ L, *P*=0.023). The numbers of positive MPO-ANCA patients with AAV and that of positive PR3-ANCA patients with AAV were 68 (84%) and 8 (10%), respectively. The titers of MPO-ANCA and PR3-ANCA were not significantly different between the patients with and without hypocomplementemia (Suppl. Fig, <http://links.lww.com/MD/B265>). Significantly more positive immune complex deposits in renal biopsy specimens were seen in the AAV patients with hypocomplementemia than in those without hypocomplementemia (4 [80%] vs. 2 [18%], *P*=0.036).

3.3. Treatments

The median initial dose of prednisolone was 40 mg/day. There was no significant difference in the initial dose of prednisolone between the patients with and without hypocomplementemia. As shown in Table 3, other than prednisolone, there were no significant differences regarding treatments.

3.4. Outcomes

Table 3 also summarizes the patient outcomes. Of the total group of 81 patients, 17 patients (21%) had relapses during follow-up.

Table 2**Laboratory data of total patients and the patients with and without hypocomplementemia.**

Variable (reference value)	Total (n=81)	With hypocomplementemia (n=16)	Without hypocomplementemia (n=65)	P*
WBC ($\times 10^3$ cells/ μ L) (3.5–9.8)	8.1 (5.9–12.4)	9.5 (5.2–14.4)	7.9 (5.9–12.1)	0.61
Hb, g/dL (11.3–17.6)	10.9 (9.3–12.6)	10.4 (8.1–11.1)	11.2 (9.6–12.8)	0.055
Plt ($\times 10^4$ cells/ μ L) (13.0–36.9)	24.8 (17.8–30.7)	16.5 (10.1–28.4)	24.9 (19.3–31.0)	0.023
CRP, mg/dL (<0.14)	1.3 (0.4–8.6)	2.4 (0.5–9.3)	1.3 (0.3–8.6)	0.68
ESR, mm/h (<15)	56 (14–90)	90 (20–117)	42 (13–88)	0.28
Urea nitrogen, mg/dL (<22)	19 (14–38)	26 (13–72)	19 (15–35)	0.37
Creatinine, mg/dL (0.47–1.04)	0.93 (0.64–2.22)	1.40 (0.71–3.32)	0.88 (0.63–2.22)	0.26
eGFR, mL/min/1.73m ²	54.7 (20.1–77.9)	34.4 (15.8–69.3)	57.7 (20.1–80.2)	0.23
C3, mg/dL (86–160)	99.5 (86.4–115.5)	62.4 (38.8–97.9)	103.3 (90.7–123.0)	<0.001
C4, mg/dL (17–45)	22.9 (19.3–29.6)	11.8 (9.0–19.7)	25.5 (21.9–30.4)	<0.001
CH50 (CH50/mL) (25–48)	40.0 (32.9–46.5)	27.9 (13.8–31.8)	42.8 (37.2–48.6)	<0.001
MPO-ANCA, n (%), U/mL (<3.5)	68 (84), 132 (46–264)	12 (75), 75 (23–241)	56 (86), 143 (57–306)	0.28, 0.087
PR3-ANCA, n (%), U/mL (<3.5)	8 (10), 17 (5–43)	2 (13), 12 (6–18)	6 (9), 19 (6–71)	0.65, 0.60
Positive ANA at 1:40, n (%)	11 (14)	1 (6)	10 (16)	0.45
Positive ANA at \geq 1:80, n (%)	21 (26)	5 (31)	16 (25)	0.75
Hematuria, n (%)	52 (64)	12 (75)	40 (62)	0.39
Urine protein, g/gCr	0.69 (0.17–3.17)	2.24 (0.57–4.60)	0.42 (0.14–2.47)	0.105
Immune complex deposits in renal biopsy specimen, n=16 (%)	6 (38)	4 (80)	2 (18)	0.036

ANA=antinuclear antibody, CRP=C-reactive protein, eGFR=estimated glomerular filtration rate, ESR=erythrocyte sedimentation rate, Hb=hemoglobin, MPO-ANCA=myeloperoxidase-anti-neutrophil cytoplasmic antibody, Plt=platelet, PR3-ANCA=Proteinase 3-anti-neutrophil cytoplasmic antibody, WBC=white blood cell.

*With hypocomplementemia vs. without hypocomplementemia.

Hypocomplementemia at disease onset was not associated with subsequent relapses after remission as assessed by a log-rank test using the Kaplan–Meier method ($P=0.27$) (Fig. 2). In contrast, hypocomplementemia at disease onset was significantly associated with death ($P=0.033$) as assessed by a log-rank test using the Kaplan–Meier method (Fig. 3).

For all 7 patients needing dialysis, the initiation of dialysis was performed within 1 month after the diagnosis of AAV.

3.5. Results excluding the EGPA patients

We show results excluding those of the 11 EGPA patients (Table 4, Fig. 4) because EGPA is different from other types of AAV in its clinical manifestations and may have other pathogenesis even in the presence of ANCA. One patient with EGPA had hypocomplementemia at disease onset. The data

excluding that of the EGPA patients also showed more skin lesions, DAH, TMA, skin lesions, and poor prognosis in the AAV patients with hypocomplementemia.

3.6. Change in the levels of complement by treatment

We were able to collect the data of serial measurements of complements at both disease onset and remission from 11 of the 16 patients with hypocomplementemia from medical records, but only the complement levels at disease onset were available in the remaining 5 patients. Seven of the 11 patients for whom the data of serial measurements of complements were available had continuous hypocomplementemia as the state in which at least one of C3, C4, and CH50 were lower than the lower limit of the normal range in remission. In the other 4 patients, hypocomplementemia improved to normal or high levels of C3, C4, and

Table 3**Treatments and outcomes of total patients and patients with and without hypocomplementemia.**

Variable	Total (n=81)	With hypocomplementemia (n=16)	Without hypocomplementemia (n=65)	P*
Initial dose of prednisolone, mg/day	40 (30–40)	40 (30–40)	40 (30–40)	0.48
Pulsed methylprednisolone as an initial therapy, n (%)	56 (69)	13 (81)	43 (66)	0.37
Intravenous cyclophosphamide, n (%)	15 (19)	5 (31)	10 (15)	0.161
Oral cyclophosphamide, n (%), mg/day	5 (6), 50 (25–75)	0 (0)	5 (8), 50 (25–75)	0.58
Methotrexate, n (%), mg/day	2 (2), 7 (6–8)	0 (0)	2 (3), 7 (6–8)	1.00
Azathioprine	11 (14), 50 (50–100)	1 (6), 50 (50–50)	10 (15), 50 (50–100)	0.68
Cyclosporine, n (%), mg/day	4 (5), 150 (113–150)	1 (6), 150 (150–150)	3 (5), 150 (100–150)	1.00
Mizoribine, n (%), mg/day	13 (16), 150 (75–150)	2 (13), 138 (125–150)	11 (17), 150 (50–150)	1.00
Tacrolimus, n (%), mg/day	12 (15), 2.0 (1.0–2.8)	2 (13), 1.3 (1.0–1.5)	10 (15), 2.0 (1.0–3.0)	1.00
Intravenous immunoglobulin, n (%)	5 (6)	2 (13)	3 (5)	0.25
Relapse, n (%)	17 (21)	3 (19)	14 (22)	1.00
Dose of prednisolone at relapse, mg/day	5 (2–15)	10 (0–30)	5 (2–11)	0.55
Dialysis, n (%)	7 (9)	1 (6)	6 (9)	1.00
Death, n (%)	9 (11)	3 (19)	6 (9)	0.37

*With hypocomplementemia versus without hypocomplementemia.

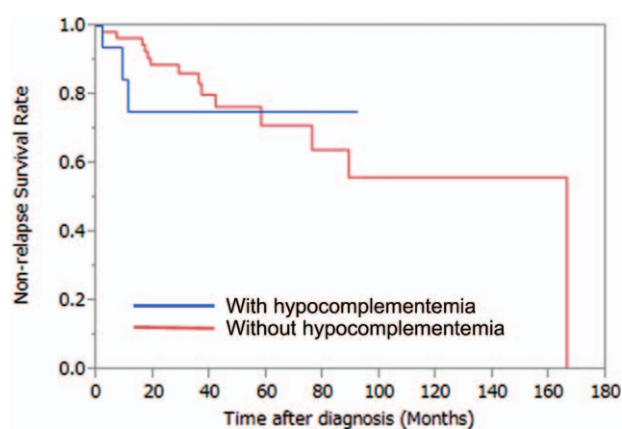


Figure 2. Hypocomplementemia at disease onset was not associated with subsequent relapses after remission ($P=0.27$).

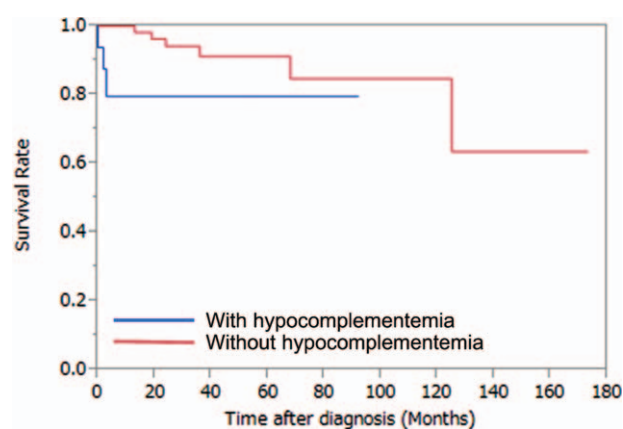


Figure 3. Hypocomplementemia at disease onset was significantly associated with death ($P=0.033$).

CH50 in remission. There were no significant differences regarding clinical features at disease onset or in outcomes between the patients with continuous hypocomplementemia and those with normal complement levels.

4. Discussion

We evaluated the clinical significance of hypocomplementemia in AAV patients by analyzing their baseline clinical characteristics and prognoses, and our results indicated that the AAV patients with hypocomplementemia more frequently had DAH and TMA and had poor prognoses compared to the AAV patients without hypocomplementemia.

Complement is a part of the innate immune system that can eliminate pathogens. Activation of the complement system is also involved in the pathogenesis of systemic autoimmune diseases. Three pathways can cause C3 activation: classical, alternative, and lectin pathways.^[15] C3 activation leads to the activation of C5 to form the membrane-attack complex (MAC) C5b-9. A MAC can cause cell lysis.^[16]

Complement has been shown to be associated with the pathogenesis of AAV. For example, activation of the alternative complement pathway is required to induce vascular inflammation in AAV.^[4] In renal tissue of AAV patients with positive MPO-ANCA, C3d, and factor B co-localized with MAC, the involvement of an alternative pathway of complement system was thus suggested.^[17] In addition to roles of MAC, it is reported that C5a mediates ANCA-induced glomerulonephritis^[18] and that C5a receptor blockade protected against MPO-ANCA-induced glomerulonephritis in a murine model.^[19]

The reported incidence of hypocomplementemia in AAV in the Japanese population is 4.2% to 14.8%.^[20] Molad et al^[6] reported that 6 of 30 patients (20%) with MPO-ANCA-positive AAV had low C3 at disease onset. In our present study, 20% of the AAV patients had hypocomplementemia at disease onset. Low C3 was reported to be associated with a poor renal prognosis and life prognosis in a study of 6 MPO-ANCA-positive AAV patients,^[6] but the present investigation is the only study regarding clinical features of AAV with hypocomplementemia. Our present findings revealed life-threatening organ damage in AAV patients with hypocomplementemia, but we did not observe poor renal prognoses among these patients.

This study suggests poor prognoses in patients with hypocomplementemia. To our knowledge, this is the first study

revealing that AAV patients with hypocomplementemia had higher incidences of DAH and TMA, and that hypocomplementemia at disease onset is thus a poor-prognosis factor in AAV.

The reported incidence of DAH in AAV is between 8% and 36%.^[21] Hirayama et al^[20] noted that the incidence of DAH in AAV in a Japanese population was 15.4%. In our study, 14% of the patients had DAH. DAH can be caused by pulmonary capillaritis, and circulating and/or tissue deposits of immune complexes have been demonstrated in many of the diseases that cause pulmonary capillaritis.^[22] Because activation of the pathway of the complement system can be caused by immune complexes, hypocomplementemia would be caused by an excessive activation of complement pathways. The relationship between hypocomplementemia and DAH in our study may be explained by these facts.

Haas et al^[2] reported that 68 (54%) of 126 patients with ANCA-associated crescentic glomerulonephritis had immune complex deposits in renal biopsy specimens. In our present study, 38% of the AAV patients had immune complex deposits in renal biopsy specimens, and the AAV patients with hypocomplementemia had significantly more immune complex deposits in renal biopsy specimens than the AAV patients without hypocomplementemia. In addition, the patients with hypocomplementemia had high urine protein levels (2.24 g/gCr). Fujimoto et al^[23] reported that 13 patients with MPO-ANCA-associated glomerulonephritis had 1.2 (0.6–2.0) g/gCr (median interquartile range) of urine protein. This result may support our hypothesis that immune complexes have an important role in the pathogenesis of AAV with hypocomplementemia.

Although it is already convincing that ANCA primarily elicits the pathologic process of AAV,^[3] according to our literature search, the titer of ANCA at disease onset does not correlate with the clinical severity of AAV or BVAS at disease onset.^[24] In the present study, we also did not observe a significant difference in the titer of ANCA at disease onset between the AAV patients with hypocomplementemia and those without hypocomplementemia. Therefore, it might not be denied that AAV patients with hypocomplementemia have an etiology that is different from that of AAV patients without hypocomplementemia. Conversely, hypocomplementemia may only reflect some ANCA-associated processes of complement activation.

Regarding TMA, Chen et al^[25] reported that of 220 patients with AAV excluding those with EGPA, 30 patients (14%) had concomitant renal TMA in a pathologic evaluation, and AAV

Table 4**Demographic and clinical characteristics, laboratory data, treatments, and outcomes of total patients and patients with and without hypocomplementemia excluding EGPA.**

Variable	Total (n=70)	With hypocomplementemia (n=15)	Without hypocomplementemia, (n=55)	P*
Onset age, y	72 (68–78)	73 (70–79)	72 (65–77)	0.29
Females, n (%)	41 (59)	8 (53)	33 (60)	0.77
BMI, kg/m ²	21.3 (18.4–23.6)	20.6 (18.2–22.3)	21.5 (18.4–24.0)	0.66
GPA, n (%)	14 (20)	3 (20)	11 (20)	1.00
MPA, n (%)	53 (76)	12 (80)	41 (75)	1.00
RLV, n (%)	3 (4)	0 (0)	3 (5)	1.00
Manifestation, n (%)				
Fever	36 (51)	10 (67)	26 (47)	0.25
Body weight loss	12 (17)	6 (40)	6 (11)	0.016
ENT	14 (20)	3 (20)	11 (20)	1.00
Renal	50 (71)	12 (80)	38 (69)	0.53
Biopsy-proven renal disease	15 (21)	5 (33)	10 (18)	0.29
Interstitial lung disease	63 (90)	14 (93)	49 (89)	1.00
Peripheral nerve system	19 (27)	7 (47)	12 (22)	0.098
Central nerve system	6 (9)	1 (7)	5 (9)	1.00
Arthralgia	8 (11)	0 (0)	8 (15)	0.188
Skin disease	12 (17)	7 (47)	5 (9)	0.002
Diffuse alveolar hemorrhage	11 (16)	6 (40)	5 (9)	0.009
Cardiovascular disease	3 (4)	0 (0)	3 (5)	1.00
Abdominal disease	2 (3)	1 (7)	1 (2)	0.39
Rapidly progressive glomerulonephritis	34 (49)	8 (53)	26 (47)	0.77
Thrombotic microangiopathy	2 (3)	2 (13)	0 (0)	0.044
WBC ($\times 10^3$ cells/ μ L) (3.5–9.8)	7.9 (5.8–11.4)	9.1 (4.7–15.0)	7.7 (5.8–10.5)	0.38
Hb, g/dL (11.3–17.6)	10.5 (8.6–12.1)	10.4 (7.9–11.2)	10.8 (9.1–12.4)	0.24
Plt ($\times 10^4$ cells/ μ L) (13.0–36.9)	24.3 (17.7–30.4)	17.7 (12.6–29.5)	24.8 (18.2–30.5)	0.090
CRP, mg/dL (<0.14)	1.2 (0.4–8.1)	2.4 (0.4–9.5)	1.2 (0.4–5.8)	0.69
ESR, mm/h (<15)	58 (19–98)	73 (17–118)	58 (19–90)	0.67
Urea nitrogen, mg/dL (<22)	21 (16–41)	32 (14–80)	21 (16–38)	0.45
Creatinine, mg/dL (0.47–1.04)	1.00 (0.66–2.44)	1.45 (0.68–3.70)	0.95 (0.66–2.40)	0.47
eGFR, mL/min/1.73m ²	46.7 (16.9–73.5)	30.5 (13.2–71.1)	52.5 (17.1–74.8)	0.46
C3, mg/dL (86–160)	99.1 (85.6–113.6)	63.1 (39.8–98.5)	103.2 (90.3–116.0)	<0.001
C4, mg/dL (17–45)	22.5 (19.3–28.4)	12.0 (10.3–19.7)	25.3 (21.9–29.8)	<0.001
CH50 (CH50/mL) (25–48)	39.9 (32.8–46.3)	27.9 (19.2–31.8)	42.5 (38.6–48.6)	<0.001
MPO-ANCA, n (%)	57 (81), 135 (43–244)	11 (73), 79 (25–242)	46 (84), 143 (56–249)	0.45, 0.23
PR3-ANCA, n (%)	8 (11), 17 (5–43)	2 (13), 12 (6–18)	6 (11), 19 (6–71)	1.00, 0.60
Positive ANA at 1:40, n (%)	10 (14)	1 (7)	9 (17)	0.44
Positive ANA at \geq 1:80, n (%)	21 (30)	5 (33)	16 (30)	0.76
Hematuria, n (%)	46 (66)	11 (73)	35 (64)	0.55
Urine protein, g/gCr	0.89 (0.17–3.50)	3.55 (0.51–4.73)	0.63 (0.15–2.61)	0.134
Immune complex deposits in renal biopsy specimen, n=15 (%)	6 (40)	4 (80)	2 (20)	0.089
Initial dose of prednisolone, mg/day	38 (30–40)	40 (30–40)	35 (30–40)	0.71
Pulsed methylprednisolone as an initial therapy, n (%)	49 (70)	12 (80)	37 (67)	0.53
Intravenous cyclophosphamide, n (%)	12 (17)	5 (33)	7 (13)	0.115
Oral cyclophosphamide, n (%), mg/day	5 (7), 50 (25–75)	0 (0)	5 (9), 50 (25–75)	0.58
Methotrexate, n (%), mg/day	2 (3), 7 (6–8)	0 (0)	2 (4), 7 (6–8)	1.00
Azathioprine, n (%), mg/day	9 (13), 50 (50–100)	1 (7), 50 (50–50)	8 (15), 50 (50–100)	0.67
Cyclosporine, n (%), mg/day	4 (6), 150 (113–150)	1 (7), 150 (150–150)	3 (5), 150 (100–150)	1.00
Mizoribine, n (%), mg/day	9 (13), 125 (50–150)	2 (13), 138 (125–150)	7 (13), 100 (50–150)	1.00
Tacrolimus, n (%), mg/day	10 (14), 2.0 (1.0–3.0)	1 (7), 1.5 (1.5–1.5)	9 (16), 2.0 (1.0–3.0)	0.68
Intravenous immunoglobulin, n (%)	4 (6)	2 (13)	2 (4)	0.20
Relapse, n (%)	13 (19)	3 (20)	10 (18)	1.00
Dose of prednisolone at relapse, mg/day	7 (4–23)	10 (0–30)	6 (5–20)	0.73
Dialysis, n (%)	7 (10)	1 (7)	6 (11)	1.00
Death, n (%)	9 (13)	3 (20)	6 (11)	0.39

ANA = antinuclear antibody, BMI = body mass index, CRP = C-reactive protein, eGFR = estimated glomerular filtration rate, EGPA = eosinophilic granulomatous polyangiitis, ENT = lesions of ear, nose, or throat, ESR = erythrocyte sedimentation rate, GPA = granulomatous polyangiitis, Hb = hemoglobin, MPA = microscopic polyangiitis, MPO-ANCA = myeloperoxidase-anti-neutrophil cytoplasmic antibody, Plt = platelet, PR3-ANCA = proteinase 3-anti-neutrophil cytoplasmic antibody, RLV = renal-limited vasculitis, WBC = white blood cell.

* With hypocomplementemia vs. without hypocomplementemia.

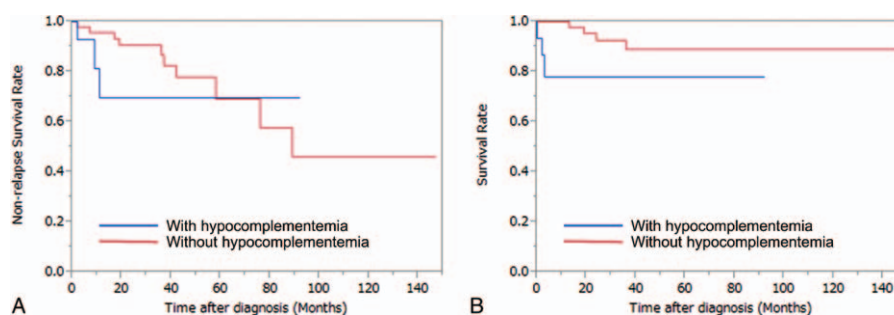


Figure 4. Analysis of data excluding eosinophilic granulomatous polyangiitis. (A) Hypocomplementemia at disease onset was not associated with subsequent relapses after remission ($P=0.31$). (B) Hypocomplementemia at disease onset was significantly associated with death ($P=0.046$).

with TMA was not rare. In contrast, only 4% of the AAV patients in our study had TMA. We may have overlooked some patients with TMA because of the difficulty in diagnosing TMA.

Manenti et al^[26] reviewed the cases of 29 patients with AAV with TMA and argued that mutations or risk haplotypes in genes encoding alternative complement regulatory proteins are associated with TMA. An excessive activation of an alternative pathway caused by a dysfunction of complement factor H and membrane cofactor protein, which can inhibit complement activation in normal conditions, will cause hypocomplementemia. In light of these concepts, hypocomplementemia may be associated with the occurrence of TMA. The significantly lower platelet levels observed in our study could be explained by TMA.

In addition to DAH and TMA, more skin lesions are seen in patients with hypocomplementemia. Sada et al^[27] reported that 39 of 156 patients with AAV (25%) had cutaneous manifestations. In our study, 50% of the patients with hypocomplementemia had skin lesions.

On the basis of the above discussion regarding hypocomplementemia in AAV, complement-based therapies are considered potentially effective. Eculizumab, a humanized monoclonal antibody that blocks the activation of terminal complement at C5 and prevents the formation of C5a and MAC, was effective in patients with paroxysmal nocturnal hemoglobinuria.^[28] An orally active small molecule that blocks C5a receptor 1 was also successful in sparing concomitant corticosteroids in Phase II studies of AAV patients.^[29] Various other complement-based therapies including C3-, factor B-, and factor D-targeted agents have been developed for many types of diseases. Complement-based therapies such as eculizumab treatment may be effective in patients with AAV whose cases are associated with dysfunctions of complement systems.

There are some limitations in this study. First, the patient series was too small to clarify the pathogenesis of hypocomplementemia, especially in each of the AAV types (EGPA, GPA, MPA, and RLV). The pathological findings from renal biopsies (which revealed the immune complex deposits) provided important information for pathogenesis, but the number of cases for which these findings were available was also too small. We therefore consider this study and its results as merely hypothesis-generating. Our findings must be tested in larger numbers of patients.

Second, the study was retrospective, and it is thus necessary to confirm the results by performing prospective studies. Third, the follow-up durations were short and it was difficult to evaluate precisely the initiation of dialysis and death. Fourth, we could not assess the clinical episodes including DAH and TMA after remission during the follow-up period. It is also important to

assess the relationships between variables at the disease onset and the clinical episodes during the follow-up period.

Fifth, the study obtained only a limited amount of pathological data except for the immune complex deposits in the renal biopsy specimens. To confirm these findings, it is necessary to assess biopsy specimens from other organs such as lung, which was the site of lesions of more patients with hypocomplementemia compared to those without hypocomplementemia in this study. Finally, the results of this study must be interpreted with great caution because our patients were all Japanese individuals with AAV, the clinical manifestations of which differ between Japanese and Western populations; for example, more interstitial lung diseases and more positive MPO-ANCA were observed in studies of Japanese AAV patients.^[27] Our findings may not apply to AAV patients in Western countries.

5. Conclusion

Our results suggest that hypocomplementemia in AAV might become a risk factor for the development of DAH and TMA. Moreover, hypocomplementemia was revealed to be a poor-prognosis factor in AAV. It is thus very important to pay attention to the levels of complement at the diagnosis of AAV.

References

- [1] Jennette JC, Falk RJ, Bacon PA, et al. 2012 revised International Chapel Hill Consensus Conference Nomenclature of Vasculitides. *Arthritis Rheum* 2013;65:1-1.
- [2] Haas M, Eustace JA. Immune complex deposits in ANCA-associated crescentic glomerulonephritis: a study of 126 cases. *Kidney Int* 2004;65:2145-52.
- [3] Jennette JC, Falk RJ. Pathogenesis of antineutrophil cytoplasmic autoantibody-mediated disease. *Nat Rev Rheumatol* 2014;10:463-73.
- [4] Xiao H, Schreiber A, Heeringa P, et al. Alternative complement pathway in the pathogenesis of disease mediated by anti-neutrophil cytoplasmic autoantibodies. *Am J Pathol* 2007;170:52-64.
- [5] van Timmeren MM, van der Veen BS, Stegeman CA, et al. IgG glycan hydrolysis attenuates ANCA-mediated glomerulonephritis. *J Am Soc Nephrol* 2010;21:1103-14.
- [6] Molad Y, Tovar A, Ofer-Shiber S. Association of low serum complement C3 with reduced patient and renal survival in antimyeloperoxidase-associated small-vessel vasculitis. *Nephron Clin Pract* 2014;126:67-74.
- [7] Watts R, Lane S, Hanslik T, et al. Development and validation of a consensus methodology for the classification of the ANCA-associated vasculitides and polyarteritis nodosa for epidemiological studies. *Ann Rheum Dis* 2007;66:222-7.
- [8] Hochberg MC. Updating the American College of Rheumatology revised criteria for the classification of systemic lupus erythematosus. *Arthritis Rheum* 1997;40:1725.
- [9] Petri M, Orbai AM, Alarcon GS, et al. Derivation and validation of the Systemic Lupus International Collaborating Clinics classification criteria for systemic lupus erythematosus. *Arthritis Rheum* 2012;64:2677-86.

- [10] Kostianovsky A, Hauser T, Pagnoux C, et al. Alveolar haemorrhage in ANCA-associated vasculitides: 80 patients' features and prognostic factors. *Clin Exp Rheumatol* 2012;30:S77–82.
- [11] Scully M, Hunt BJ, Benjamin S, et al. Guidelines on the diagnosis and management of thrombotic thrombocytopenic purpura and other thrombotic microangiopathies. *Br J Haematol* 2012;158:323–35.
- [12] JSN and MHLW Clinical Practice Guidelines for RPGN 2014. *Nihon Jinzo Gakkai Shi* 2015;57:139–232.
- [13] Flossmann O, Bacon P, de Groot K, et al. Development of comprehensive disease assessment in systemic vasculitis. *Postgrad Med J* 2008;84:143–52.
- [14] Guillevin L, Pagnoux C, Karras A, et al. Rituximab versus azathioprine for maintenance in ANCA-associated vasculitis. *N Engl J Med* 2014;371:1771–80.
- [15] Thurman JM, Holers VM. The central role of the alternative complement pathway in human disease. *J Immunol* 2006;176:1305–10.
- [16] Chen M, Daha MR, Kallenberg CG. The complement system in systemic autoimmune disease. *J Autoimmun* 2010;34:J276–286.
- [17] Xing GQ, Chen M, Liu G, et al. Complement activation is involved in renal damage in human antineutrophil cytoplasmic autoantibody associated pauci-immune vasculitis. *J Clin Immunol* 2009;29:282–91.
- [18] Schreiber A, Xiao H, Jennette JC, et al. C5a receptor mediates neutrophil activation and ANCA-induced glomerulonephritis. *J Am Soc Nephrol* 2009;20:289–98.
- [19] Xiao H, Dairaghi DJ, Powers JP, et al. C5a receptor (CD88) blockade protects against MPO-ANCA GN. *J Am Soc Nephrol* 2014;25:225–31.
- [20] Hirayama K, Kobayashi M, Usui J, et al. Pulmonary involvements of anti-neutrophil cytoplasmic autoantibody-associated renal vasculitis in Japan. *Nephrol Dial Transplant* 2015;30(Suppl 1):i83–93.
- [21] West S, Arulkumaran N, Ind PW, et al. Diffuse alveolar haemorrhage in ANCA-associated vasculitis. *Intern Med* 2013;52:5–13.
- [22] Green RJ, Ruoss SJ, Kraft SA, et al. Pulmonary capillaritis and alveolar hemorrhage. Update on diagnosis and management. *Chest* 1996;110:1305–16.
- [23] Fujimoto K, Imura J, Atsumi H, et al. Clinical significance of serum and urinary soluble urokinase receptor (suPAR) in primary nephrotic syndrome and MPO-ANCA-associated glomerulonephritis in Japanese. *Clin Exp Nephrol* 2015;19:804–14.
- [24] Yumura W, Kobayashi S, Suka M, et al. Assessment of the Birmingham vasculitis activity score in patients with MPO-ANCA-associated vasculitis: sub-analysis from a study by the Japanese Study Group for MPO-ANCA-associated vasculitis. *Mod Rheumatol* 2014;24:304–9.
- [25] Chen SF, Wang H, Huang YM, et al. Clinicopathologic characteristics and outcomes of renal thrombotic microangiopathy in anti-neutrophil cytoplasmic autoantibody-associated glomerulonephritis. *Clin J Am Soc Nephrol* 2015;10:750–8.
- [26] Manenti L, Gnappi E, Vaglio A, et al. Atypical haemolytic uraemic syndrome with underlying glomerulopathies. A case series and a review of the literature. *Nephrology Dialysis Transplantation* 2013;28:2246–59.
- [27] Sada KE, Yamamura M, Harigai M, et al. Classification and characteristics of Japanese patients with antineutrophil cytoplasmic antibody-associated vasculitis in a nationwide, prospective, inception cohort study. *Arthritis Res Ther* 2014;16:R101.
- [28] Brodsky RA, Young NS, Antonioli E, et al. Multicenter phase 3 study of the complement inhibitor eculizumab for the treatment of patients with paroxysmal nocturnal hemoglobinuria. *Blood* 2008;111:1840–7.
- [29] Morgan BP, Harris CL. Complement, a target for therapy in inflammatory and degenerative diseases. *Nat Rev Drug Discov* 2015;14:857–77.