

## REVIEW

# Crosstalk between the heart and peripheral organs in heart failure

James Won Suk Jahng, Erfei Song and Gary Sweeney

Mediators from peripheral tissues can influence the development and progression of heart failure (HF). For example, in obesity, an altered profile of adipokines secreted from adipose tissue increases the incidence of myocardial infarction (MI). Less appreciated is that heart remodeling releases cardiokines, which can strongly impact various peripheral tissues. Inflammation, and, in particular, activation of the nucleotide-binding oligomerization domain-like receptors with pyrin domain (NLRP3) inflammasome are likely to have a central role in cardiac remodeling and mediating crosstalk with other organs. Activation of the NLRP3 inflammasome in response to cardiac injury induces the production and secretion of the inflammatory cytokines interleukin (IL)-1 $\beta$  and IL-18. In addition to having local effects in the myocardium, these pro-inflammatory cytokines are released into circulation and cause remodeling in the spleen, kidney, skeletal muscle and adipose tissue. The collective effects of various cardiokines on peripheral organs depend on the degree and duration of myocardial injury, with systematic inflammation and peripheral tissue damage observed as HF progresses. In this article, we review mechanisms regulating myocardial inflammation in HF and the role of factors secreted by the heart in communication with peripheral tissues.

*Experimental & Molecular Medicine* (2016) 48, e217; doi:10.1038/emm.2016.20; published online 11 March 2016

## INTRODUCTION

### Heart failure and the role of inflammation

Cardiovascular diseases are the leading cause of death worldwide, and heart failure (HF) is an important contributor to this statistic.<sup>1</sup> When the heart is under stress or injured, it undergoes structural and functional changes termed cardiac remodeling.<sup>2</sup> These include cardiac hypertrophy, fibrosis, apoptosis and altered metabolism.<sup>3</sup> When an individual suffers from myocardial ischemia, it is intuitively important to re-perfuse the damaged area and re-establish the supply of blood to the damaged area. However, it has also been realized that some cellular events which occur during reperfusion may lead to worse outcomes, a phenomenon termed myocardial ischemia/reperfusion (I/R) injury.<sup>4</sup>

The various mechanisms underlying the detrimental effects of ischemia and subsequent reperfusion are complex and are not fully understood. Nevertheless, a number of clinical and animal studies suggest that inflammation is a key contributor to adverse myocardial remodeling.<sup>4</sup> Broadly speaking, inflammation is a wound-healing process mediated by innate immune cells that recognize microbial and non-microbial sources of danger/stress. Inflammation triggered in the absence of infection is termed 'sterile inflammation'. Multiple studies have highlighted the importance of targeting sterile

inflammation in HF.<sup>5–7</sup> Sterile inflammation involves the secretion of inflammatory cytokines and recruitment of innate immune cells, such as neutrophils and monocytes/macrophages. However, prolonged exposure to inflammatory cytokines will exacerbate adverse remodeling and enhance myocardial damage.<sup>8</sup> Importantly, in addition to local adverse effects on cardiac remodeling, ischemia- or I/R-induced inflammation in the heart releases pro-inflammatory cytokines, such as interleukin (IL)-1 $\beta$  and IL-18, into circulation. These, and other so-called cardiokines, can have significant endocrine effects on other tissues, leading to damage in multiple peripheral organs.<sup>9</sup> For example, prolonged exposure to IL-1 $\beta$  and IL-18 can lead to caspase-1-dependent cell death via pyroptosis.<sup>10,11</sup> Thus, crosstalk from the heart to other tissues can elicit multi-organ damage as a consequence of ischemia-induced inflammation.<sup>9</sup> This review highlights the current knowledge of inflammasome activation in the heart and its consequences on other organs.

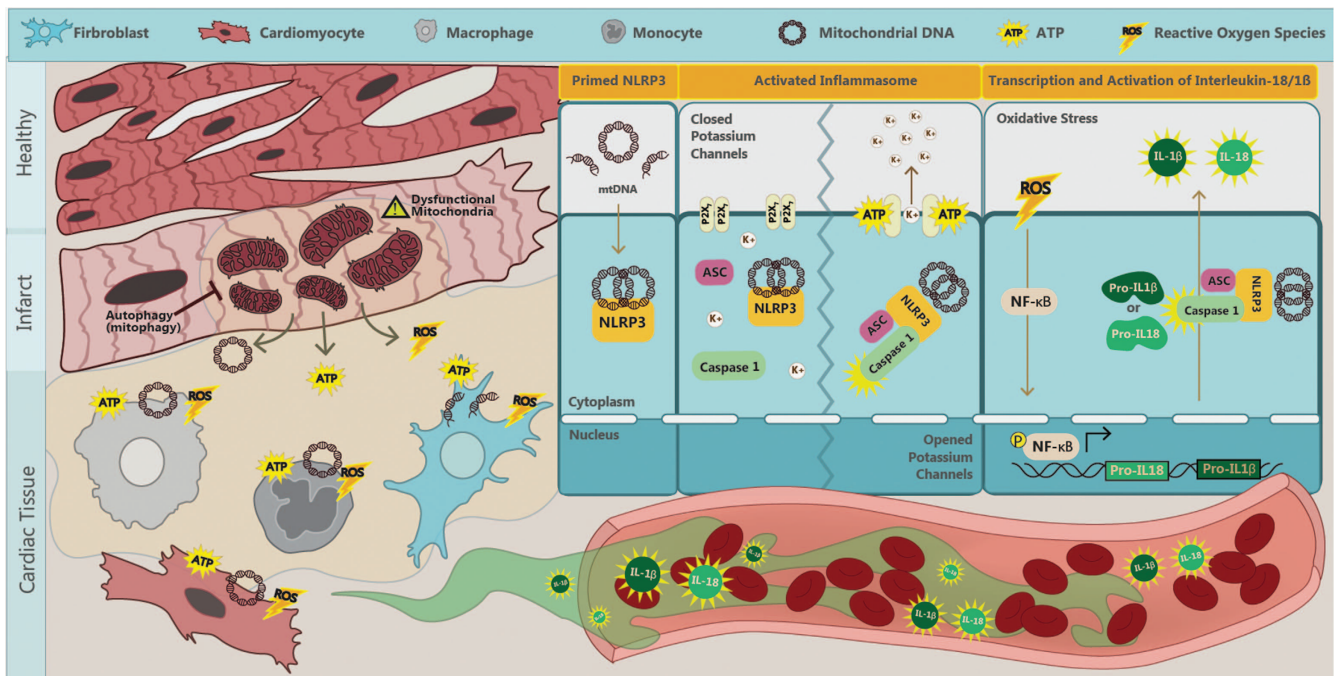
### Mechanisms regulating cardiac inflammation in HF, focus on the NLRP3 inflammasome

The nucleotide-binding oligomerization domain-like receptors with pyrin domain (NLRP3) inflammasome is a cytoplasmic protein complex composed of NLRP, apoptosis-associated

speck-like protein containing CARD (ASC), a caspase recruitment domain and pro-caspase-1.<sup>12,13</sup> NLRP3 is composed of C-terminal leucine-rich repeats, a central nucleotide domain (NACHT) and N-terminal effector pyrin domain. Upon recognizing patterns, either from a pathogenic source (pathogen-associated molecular patterns) or from a non-pathogenic source (danger/damage-associated molecular patterns, DAMPs), NLRP3 will recruit ASC, which, in turn, recruits pro-caspase 1, which will then get activated.<sup>14</sup> Inflammasomes are classified based on NLRPs, which recognize or sense different stimuli.<sup>15</sup> The NLRP3 inflammasome is the most widely studied to date due to its ability to recognize various cellular stressors and its strong relationship with diseases such as HF.<sup>16</sup> The key consequence of inflammasome activation is maturation of pro-inflammatory cytokines, in particular IL-1 $\beta$  and IL-18. The generation of active forms of IL-1 $\beta$  and IL-18 is regulated at two steps: expression of pro-IL-1 $\beta$  and pro-IL-18 is mediated by nuclear factor kappa-light chain enhancer of activated B cells (NF- $\kappa$ B), and processing to the mature form of IL-1 $\beta$  and IL-18 is mediated by active caspase-1 in the inflammasome.<sup>14</sup>

Multiple DAMPs have been found to activate NLRP3 inflammasomes, including monosodium urate, calcium phosphate crystals, cholesterol crystals, amyloid  $\beta$ , hyaluronan, islet amyloid polypeptide, asbestos and silica.<sup>14</sup> However, in

HF, we suggest that mitochondria have a critical role in initiating inflammasome activation.<sup>17,18</sup> In HF-associated inflammasome activation, the three main triggers are adenosine triphosphate (ATP), mitochondrial DNA (mtDNA), and reactive oxygen species (ROS) (see Figure 1). When cells undergo death they release ATP. Multiple studies have suggested that ATP directly activates the NLRP3 inflammasome.<sup>19,20</sup> High extracellular ATP levels activate P2X<sub>7</sub> purinergic receptors to cause potassium efflux. Low intracellular levels of potassium promote the assembly of NLRP3 and ASC. In addition, it has been suggested that low intracellular potassium will also promote pannexin-1 membrane pore formation, further easing the access of inflammasome activating agents.<sup>21</sup> mtDNA has been established as a DAMP when liberated into the extracellular space.<sup>22,23</sup> It was shown<sup>24</sup> that the translocation of mtDNA to the cytosol was associated with subsequent inflammasome activation. A DNase treatment reduced secretion of IL-1 $\beta$  in macrophages. It has also been reported<sup>25</sup> that mitochondrial dysfunction and oxidized mtDNA directly activate the NLRP3 inflammasome. Macrophages lacking mtDNA or treated with the oxidized nucleoside 8-OH-dG to confer competitive inhibition had severely attenuated IL-1 $\beta$  secretion. Mitochondrial marker and NLRP3 inflammasome colocalization and a significant activation of NLRP3



**Figure 1** Mechanisms of NLRP3 inflammasome activation in heart failure. Myocardial infarction (MI), ischemia or ischemia/reperfusion (I/R) injury induces cardiomyocytes to release ROS, ATP and mtDNA. ROS mediates autocrine and paracrine activation and nuclear translocation of NF- $\kappa$ B, which regulates the transcription of pro-IL-1 $\beta$  and pro-IL-18. mtDNA directly primes NLRP3 and ATP via binding to P2X<sub>7</sub> receptors and leads to potassium efflux, a trigger for the assembly of NLRP3 inflammasome. These collective effects result in activation of the NLRP3 inflammasome-associated caspase-1, which processes pro-IL-1 $\beta$  and pro-IL-18 into mature IL-1 $\beta$  and IL-18 and can exacerbate local inflammation. It can also be released into circulation to mediate endocrine effects. ATP, adenosine triphosphate; IL, interleukin; mtDNA, mitochondrial DNA; NF- $\kappa$ B, nuclear factor kappa-light-chain-enhancer of activated B cells; NLRP3, NLR family, pyrin domain containing 3; ROS, reactive oxygen species; K<sup>+</sup>, potassium.

inflammasome upon mitochondrial membrane disruption have been shown.<sup>26</sup> It was reported<sup>27</sup> that activation of the NLRP3 inflammasome in macrophages occurred due to an ATP-mediated ROS-dependent activation of phosphoinositide 3 kinase signaling. ROS stimulates the activation of NF- $\kappa$ B and increases the expression of pro-IL-1 $\beta$  and pro-IL-18.<sup>21</sup>

#### Mitochondrial regulation by autophagy in the heart

Because all the mediators discussed above (ATP, mtDNA and ROS) may come from mitochondria, our hypothesis is that this organelle has a vital role in inflammasome activation. Thus, mitochondrial integrity is a key limiting factor for NLRP3 inflammasome activation. Furthermore, this may be especially relevant in the heart where cardiomyocytes have a higher mitochondrial content relative to other cell types. Overall, the heart is likely to be highly susceptible to mitochondria-derived DAMPs. Thus, effective regulation of damaged mitochondria is critical. Autophagy is a quality control system mediating degradation of protein aggregates and damaged organelles. Multiple studies have documented the importance of mitochondrial regulation by autophagy, specifically referred to as mitophagy, in HF.<sup>28</sup> Multiple studies have also now established a strong association between autophagy and inflammasome activation. First, stimulating autophagy in macrophages using rapamycin can directly target precursors of IL-1 $\beta$  for degradation. Mice pretreated with rapamycin showed reduced circulating levels of IL-1 $\beta$  following a challenge with an inflammatory stimulus.<sup>29</sup> Using ATG16L1-deficient cells, it was shown that autophagy was involved in endotoxin (lipopolysaccharide)-induced inflammasome activation and increased IL-1 $\beta$  and IL-18 secretion.<sup>30</sup> Another study<sup>31</sup> reported that inflammasomes can be directly sequestered into autophagosomes and destined for autophagic degradation. Nakahira *et al.*<sup>24</sup> reported on the regulation of mtDNA-driven inflammasome activation by autophagy. They deleted genes encoding key autophagy proteins LC3B and Beclin1, and found a significant enhancement in caspase-1 activation and secretion of IL-1 $\beta$  and IL-18. Thus, defective autophagy-mediated quality control mechanisms resulted in enhanced inflammasome activation via the accumulation of damaged mitochondria and reduced inflammasome clearance in both *in vitro* and *in vivo* settings.

#### Distinct roles of cardiomyocytes, fibroblasts and immune cells in cardiac inflammasome activation

Numerous studies have now established a strong association between inflammasome activation and adverse remodeling in HF. For example, both ASC-KO and caspase-1-KO mice exhibited a significant reduction in infarct zone and fibrosis, as well as improved cardiac function after myocardial I/R injury.<sup>32</sup> As highlighted in Figure 1, it has been proposed that activation of the inflammasome occurs via cell-to-cell communication within heterogeneous cell populations of heart tissue, including cardiomyocytes, fibroblasts and innate immune cells.<sup>6,33</sup> Kawaguchi *et al.*<sup>32</sup> identified that both hematopoietic and non-hematopoietic cells are responsible

for secreting IL-1 $\beta$  after myocardial I/R injury, because only chimeric mice with ASC-KO bone marrow on an ASC-KO background showed reduction in infarct zone. They followed up with *in vitro* experiments in which hypoxia/reoxygenation stimulated inflammasome activation in cardiac fibroblasts, but not in cardiomyocytes. This notion was supported by studies in adult cardiomyocytes in which NLRP3 inflammasome activation was inhibited using either siRNA or pharmacological inhibitors. This resulted in fewer cell deaths but not IL-1 $\beta$  secretion.<sup>34</sup> Upon permanent myocardial ischemia in both murine and rat models, myocardial fibroblasts were shown to be the primary source of IL-1 $\beta$  secretion in response to ATP released from damaged neighboring cells.<sup>35</sup> Further work<sup>36</sup> has also supported the notion of non-immune cell-mediated IL-1 $\beta$  and IL-18 secretion. This work concluded that mitochondrial ROS from cardiomyocytes acts as a trigger to prime the NLRP3 inflammasome. Taken together, the data suggest that cardiomyocytes, cardiac fibroblasts and infiltrating immune cells contribute via different roles toward inflammation and cardiac remodeling in myocardial infarction (MI) (Figure 1).

#### CROSSTALK BETWEEN THE HEART AND ADIPOSE TISSUE

##### Alterations in adipokine profiles influence the development of HF

There is a well-documented association between obesity and HF.<sup>2</sup> Adipose tissue is clearly an important contributor to inflammation in HF. Multiple studies have established both pro- and anti-inflammatory effects of adipokines.<sup>37,38</sup> In obesity, adipose tissue undergoes changes induced by metabolic stress. It releases more pro-inflammatory cytokines, including IL-6, IL-8, monocyte chemoattractant protein-1 (MCP-1), and less of the anti-inflammatory cytokines, including IL-10 and adiponectin.<sup>39–41</sup> Visceral fat is the most important depot, which responds to metabolic stress in this way. There is a well-established positive correlation between visceral fat levels and HF.<sup>42</sup> However, it is interesting to note that epicardial and pericardial fat depots exhibit a similar phenotype to visceral fat and have been strongly correlated with the progression of adverse cardiac remodeling.<sup>43</sup> McKenney *et al.*<sup>44</sup> observed increased epicardial adipose tissue after MIs, which correlated with a reduced adiponectin level after MI. In their study they compared pigs with or without adipectomy subjected to MI. They observed that the progression of adverse remodeling after the MI was attenuated, and the infarct zone size was diminished in adipectomized animals. This correlates with a previous observation in which a pig with myocardial I/R injury developed improved cardiac function, reduced infarct size and less tumor necrosis factor alpha (TNF $\alpha$ ) production with a greater production of IL-10 after intracoronary administration of adiponectin.<sup>45</sup> In summary, whereas it is generally accepted that in obesity, the profile of adipokines from various fat depots mediates detrimental effects on the myocardium, the obesity paradox suggests that these adipokines can confer beneficial effects during post-MI stages of remodeling.<sup>2</sup>

Extensive epidemiological and clinical data suggest that type 2 diabetes increases the risk for HF independently of other risk factors, such as hypertension.<sup>46,47</sup> One potential mechanism is that type 2 diabetes, often associated with obesity, leads to myocardial lipotoxicity that contributes to cell death, and thus, to cardiac dysfunction. Diabetic cardiomyopathy is also characterized by interstitial and perivascular fibrosis. A significant increase in collagen deposition was found around intramural vessels and between myofibers in heart biopsies in patients with diabetes.<sup>48–50</sup> Given that fibrosis is one consequence of inflammation, IL-1 $\beta$  and other inflammatory markers, such as fibrosis, signal the onset and progression of HF in this way.<sup>51–54</sup>

### Cardiokine and endocrine effects on peripheral tissues in HF

In recent years, there has been an increased realization of endocrine effects mediated by factors produced and secreted by the heart.<sup>55</sup> Collectively, these are referred to as cardiokines. Ischemic stress results in a substantial change in the profile of cardiokines secreted from the myocardium.<sup>9,55</sup> In particular, upon activation of the inflammasome and infiltration of splenocytes in the infarct zone, the heart will release more pro-inflammatory cytokines.<sup>9</sup> Cardiac fibroblasts have been proposed as the principal source of inflammatory signals in pathological conditions, although cardiomyocytes also contribute to the pro-inflammatory environment in the myocardium by producing different cytokines and chemokines.<sup>56,57</sup> Injured cardiac cells release damage-associated molecular pattern molecules, such as high-mobility group box 1, DNA fragments, heat-shock proteins and matricellular proteins, which instruct surrounding healthy cardiomyocytes to produce inflammatory mediators. These mediators, mainly IL-1 $\beta$ , IL-18, IL-6, MCP-1 and TNF $\alpha$ , in turn activate versatile signaling networks within surviving cardiomyocytes and trigger leukocyte activation and recruitment.

Evidence for myocardial production of TNF $\alpha$  has been controversial.<sup>58,59</sup> However, it is now clear that TNF $\alpha$  can be produced by isolated cardiomyocytes under certain conditions, such as treatment with lipopolysaccharide.<sup>60–63</sup> Similarly, increased expression of TNF $\alpha$  in cardiac myocytes and fibroblasts isolated from failing hearts suggests that if exposed to pathophysiological stimuli, the heart has the capacity to produce TNF $\alpha$ .<sup>64,65</sup> IL-6 can be produced in most cells in the heart, including cardiomyocytes<sup>66,67</sup> and fibroblasts.<sup>68,69</sup> A lipopolysaccharide treatment or hypoxia-reoxygenation stimulated the production of IL-1 $\beta$  in isolated cardiac fibroblasts, while isolated cardiomyocytes did not respond to either treatment.<sup>32</sup> A co-culture of cardiomyocytes with fibroblasts induced by an angiotensin-II treatment secreted much greater levels of IL-6 and TNF $\alpha$  than cultures of fibroblasts alone, indicating that a paracrine action has a vital role in the production of pro-inflammatory cytokines.<sup>70</sup>

Another good example of a cardiokine is atrial natriuretic peptide (ANP), which is produced mainly in the myocardium. Its expression is enhanced during myocardial stretching.<sup>71</sup> ANP

has a beneficial role in cardiac remodeling by acting in an autocrine or paracrine manner. For example, treatment with cultured cardiac myocytes with an antagonist of ANP receptor HS-142-1 increased expression of contractile protein genes, such as skeletal-actin and beta-myosin heavy chain, as well as the size of cardiomyocytes.<sup>72</sup> ANP also contributes to oxytocin-induced protection in myocardial ischemia-reperfusion injury by reducing lipid peroxidation in a nitric oxide-dependent mechanism.<sup>73</sup>

ANP receptors are found in adipose tissue and mediate effects, including enhanced lipolysis and energy expenditure, as well as altering adipokine production and release.<sup>74–76</sup> Thus, natriuretic peptides can definitely influence peripheral metabolism by acting on adipose tissue. Therapeutically targeting ANP action may confer metabolic and cardiovascular benefits in the future.<sup>74</sup>

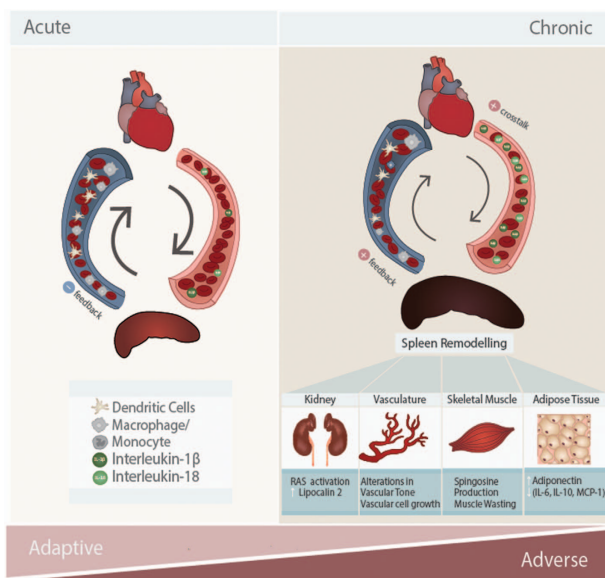
### CROSSTALK BETWEEN THE HEART AND SPLEEN: THE CARDIO-SPLENIC AXIS

Neutrophil activation and leukocyte infiltration in the heart are prominent features of MIs that exacerbate inflammatory cytokine release and tissue damage.<sup>77</sup> Indeed, the mononuclear phagocyte network undergoes extensive remodeling after MI. There are different subpopulations of monocytes residing in mice. These are converted from one to another upon inflammatory responses after an MI. Monocytes are generally classified into two categories: migratory monocytes with inflammatory characteristics, which express high levels of Ly6C and CC chemokine receptor CCR2 and low levels of fractalkine receptor CX3CR1 (Ly-6C<sup>hi</sup>, CCR2<sup>hi</sup>, CX3CR1<sup>low</sup>), and reparative monocytes with anti-inflammatory profiles (Ly-6C<sup>low</sup>, CCR2<sup>low</sup>, CX3CR1<sup>high</sup>).<sup>78</sup> The exact mechanism of how each phenotype of monocytes regulates the inflammatory response during an MI is complicated and is not resolved.<sup>79</sup> However, under acute MI conditions, monocyte recruitment to the heart is very dynamic and largely dependent on the spleen. The spleen is one of most important lymphoid tissues. It has a role in filtering blood and regulating immune responses to circulating agents.<sup>80</sup> The spleen contains large pools of undifferentiated monocyte reservoirs<sup>80,81</sup> that can undergo splenic hematopoiesis, increasing motility and pro-inflammatory characteristics (Ly-6C<sup>hi</sup>).<sup>81</sup> Recruitment of reparative monocytes (Ly-6C<sup>low</sup>) ultimately helps resolve inflammation and promote tissue healing.<sup>81,82</sup>

Dendritic cells (DCs), specialized for presenting antigens to T cells, also have an important role in the immune response to an MI.<sup>83</sup> In an acute MI, both DCs and monocytes/macrophages have been shown to positively contribute to tissue healing. Upon an initial cardiac inflammatory response, DCs infiltrate the infarcted area to confer a protective role. This is demonstrated with DC-ablated mice exhibiting greater adverse cardiac remodeling after an MI.<sup>84</sup> In these mice, there was sustained expression of pro-inflammatory cytokines, IL-1 $\beta$ , IL-18 and TNF $\alpha$ , yet reduced IL-10 expression.<sup>84</sup>

Interestingly, under chronic MI conditions, the protective roles of splenocytes become detrimental. Mice with a long-term

MI (8 weeks) showed profound splenic remodeling with a prolonged existence of pro-inflammatory monocytes (Ly-6C<sup>hi</sup>) and increased expression of alarmins.<sup>85</sup> A splenectomy was performed to investigate the role of splenocytes (splenic monocytes/macrophages and DCs) in the progression of HF-associated inflammation and post-MI remodeling. Intriguingly, mice without spleens showed less cardiac dysfunction. This was associated with attenuated monocytes/DC infiltration in the heart.<sup>85</sup> When splenocytes from the mice with an MI were injected into normal mice, the recipient mice developed left ventricle (LV) dilation, cardiac hypertrophy, systolic dysfunction, myocardial apoptosis and fibrosis.<sup>85</sup> However, the recipient mice did not reveal changes in pro-inflammatory cytokines in circulation, indicating that the adverse cardiac remodeling in chronic MI model was specifically due to splenocytes. Therefore, there is a clear sequential activation of inflammatory responses depending on the duration of MI via splenocyte-mediated crosstalk to the heart (Figure 2).



**Figure 2** Crosstalk mechanisms in the cardio-splenic axis in heart failure, and their functional consequences on peripheral tissues. In acute myocardial infarction (MI), splenocytes (splenic monocytes/macrophages and dendritic cells) migrate to the heart and mediate protective effects during the inflammatory response. In chronic MI, cardiokines induce dramatic changes in the spleen, such that splenocytes develop inflammatory profiles. This exacerbates existing inflammation in the heart and promotes adverse cardiac remodeling leading to cardiac dysfunction. Inflammatory splenocytes also lead to peripheral organ damage. For example, kidney inflammation results in enhanced activation of the renin-angiotensin system (RAS) and release of lipocalin-2. In vasculature, inflammation results in adverse alterations in vascular tone and vascular cell proliferation. Skeletal muscle is also strongly affected by heart failure, at least in part via inflammation resulting in cellular changes, such as sphingosine accumulation and muscle wasting. In adipose tissue, inflammation results in reduced adiponectin levels and further increased levels of pro-inflammatory adipokines (IL-6, MCP-1, IL-10). IL, interleukin; MCP-1, monocyte chemoattractant protein 1.

## CROSTALK BETWEEN THE HEART AND KIDNEY: CARDIO-RENAL AXIS

Multiple clinical studies have suggested that patients with chronic kidney disease experience extremely high mortality rates following acute MI.<sup>86–89</sup> This suggests that there is a strong crosstalk between the kidneys and heart. The association between end-stage renal disease and cardiovascular disease is often termed cardio-renal syndrome.<sup>90</sup> The renin-angiotensin system (RAS), a signaling cascade responsible for regulating blood pressure, has a well-established critical role in cardio-renal syndrome.<sup>91</sup> Ogawa *et al.*<sup>92</sup> reported that nephrectomy in mice with an MI influenced cardiac remodeling after the MI. The combination of nephrectomy and MI resulted in deteriorated left ventricular remodeling and RAS activation, oxidative stress and MCP-1. This observation was similar to transgenic mice overexpressing renin and angiotensinogen after a coronary artery ligation (CAL) surgery.<sup>92</sup> This correlates with previous findings that cardiomyocytes increase the expression of TNF $\alpha$  and IL-1 family through activation of NF- $\kappa$ B and activator protein 1 transcription factor in response to angiotensin II.<sup>93–95</sup>

Other than RAS, a new biomarker has been identified that strongly correlated with cardio-renal syndrome. HF patients with declined renal function exhibit elevated levels of neutrophil gelatinase-associated lipocalin (also known as lipocalin-2)<sup>96</sup>. Neutrophil gelatinase-associated lipocalin levels are strongly correlated with inflammation and cardiac remodeling in HF patients with renal dysfunction.<sup>96</sup> Pro-inflammatory effects of lipocalin-2 are also known to induce endothelial dysfunction<sup>97,98</sup> and promote apoptosis in cardiomyocytes.<sup>99,100</sup>

In addition, cardiokines, such as ANP, can mediate endocrine effects on the kidney.<sup>101</sup> They have effects on electrolyte balance and water excretion in the kidney by increasing glomerular permeability and filtration rate. ANP also antagonizes the deleterious effects of the renin-angiotensin-aldosterone system activation.<sup>101–103</sup> Furthermore, crosstalk between the heart and kidney are evident from the observation that worsening renal function manifests only in end-stage HF and is strongly related to mortality.<sup>104</sup> Although cardio-renal interactions in HF are well established, many questions, especially mechanistic, remain unanswered.

## CROSTALK BETWEEN THE HEART AND SKELETAL MUSCLE

We now appreciate that HF is strongly associated with skeletal muscle wasting, which is typically not associated with general weight loss.<sup>105,106</sup> Skeletal muscle in congestive HF patients shows increased fatigability as well as decreased endurance and exercise capacity.<sup>105,106</sup> Changes evident in muscle include metabolic imbalance, increased degradation of myofibrils and myocyte apoptosis. The signals mediating crosstalk from the heart need to be comprehensively identified.<sup>107,108</sup> One possibility is that generation of TNF $\alpha$  from the failing heart has a detrimental effect on several processes in skeletal muscle. NF- $\kappa$ B is rapidly activated by TNF $\alpha$  in differentiated skeletal

muscle cells, which directly induces skeletal muscle protein loss.<sup>109</sup> Another proposed mechanism is that TNF $\alpha$  induces sphingosine production, which then leads to induction of apoptosis in these cells.<sup>110</sup> In addition, exercise attenuates the local expression of TNF $\alpha$ , IL-1 $\beta$  and inducible Nitric Oxide Synthase (iNOS) in skeletal muscle and decreases the catabolic wasting process in HF patients.<sup>34,111,112</sup> Angiotensin-II is also produced by the heart under conditions of stress and contributes to cardiac hypertrophy and fibrosis.<sup>113</sup> Studies have shown that there is a catabolic effect of angiotensin-II on skeletal muscle, suggesting its role in muscle wasting in HF.<sup>114,115</sup>

### THERAPEUTIC APPROACHES TARGETING INFLAMMATION IN HF

As outlined above, myocardial inflammation in HF is often detrimental to peripheral tissues. There have been several studies addressing consequences of manipulating HF-associated inflammation.<sup>116</sup> Targeting TNF $\alpha$  has been extensively studied in numerous clinical trials. Patients who already have severe inflammatory conditions, such as rheumatoid arthritis (RA), were treated with TNF $\alpha$  inhibitors (etanercept, infliximab and adalimumab), which effectively reduced the inflammatory activity and reduced the prevalence of HF complications.<sup>117</sup>

The data from two-large-scale trials with more than 2000 HF patients showed that etanercept treatment reduced the risk of mortality or morbidity in HF.<sup>64</sup> Indeed, the US Food and Drug Administration has issued a directive concerning the use of etanercept in the population with HF.<sup>118</sup> However, targeting TNF $\alpha$  using a neutralizing antibody (infliximab) showed no improvement and perhaps even worsened the clinical condition of patients with chronic HF.<sup>119</sup> Other studies indicated that patients treated with high-dose infliximab continued to show a worse outcome compared with other groups.<sup>57,120</sup> Several other agents have also been suggested to have potential as therapeutic tools for chronic HF because of their inhibitory effect on TNF $\alpha$ , including the glutamic acid derivative thalidomide.<sup>121</sup> Thalidomide prevents the accumulation of TNF $\alpha$  by inducing the degradation of TNF $\alpha$  messenger ribonucleic acid transcripts, and thus, protein production.<sup>121</sup> The xanthine derivative pentoxifylline has also been reported to have a role in therapeutic TNF $\alpha$  modulation. Reduced TNF $\alpha$  in the serum of patients treated with pentoxifylline was observed. This correlated with improved peripheral vasodilation and blood hemodynamics.<sup>122</sup> Other studies demonstrated a significant improvement in NYHA functional class in patients treated with pentoxifylline.<sup>123,124</sup> However, the results were not reproduced by another group,<sup>125</sup> suggesting that the significance of

**Table 1 Cytokines/chemokines involved in crosstalk between the heart and peripheral organs**

Cytokines/Chemokines	Effect	Reference
IL-1 $\beta$ , IL-18 <sup>9,32-35</sup>	Neutrophil activation and leukocyte infiltration [@Spleen] increasing mobility and inflammatory characteristics of monocytes, and infiltration of DCs to heart [@Heart] autocrine production of IL-6, TNF $\alpha$ Prolonged exposure led to pyroptosis	77 78,80-82 71 148,149
IL-6, IL-8, MCP-1 <sup>60,67-69</sup> DAMPs, HMGB1, DNA fragments, heat shock proteins, matricellular protein <sup>9,55-57</sup> TNF $\alpha$ <sup>58,59</sup>	Pro-inflammatory cytokines [@Heart] autocrine effects to produce pro-inflammatory cytokines; IL-1 $\beta$ , IL-18, IL-6, MCP-1, TNF $\alpha$ Prolonged exposure led to pyroptosis [@Skeletal Muscle] muscle wasting, sphingosine production, induction of apoptosis	60,67-69 56,57 64,65 109,110
ANP <sup>71</sup>	Paracrine effect: oxytocin production, reducing lipid peroxidation with NO-dependent mechanism [@Heart] autocrine effect on heart by increasing expression of contractile protein, actin and myosin, and induce hypertrophy [@Adipose Tissue] enhancing lipolysis and increasing energy expenditure, adipokines production [@Kidney] increasing glomerular permeability and filtration rate, antagonizing RAS activation	73 72 75,76,150 101-103
IL-6, IL-8, MCP-1 <sup>37,38</sup> IL-10 <sup>37,38</sup> Adiponectin <sup>37,38</sup> Alarmins <sup>85</sup> Angiotensin-II <sup>91</sup>	Pro-inflammatory cytokines Anti-inflammatory cytokines [@Heart] reducing TNF $\alpha$ production, increasing IL-10 production, reducing infarct size [@Heart] worsening cardiac dysfunction, inducing myocardial apoptosis, fibrosis [@Heart] inducing cardiac hypertrophy/fibrosis, increasing expression of TNF $\alpha$ , IL-1 family cytokines [@Skeletal Muscle] muscle wasting	39-41 39-41 45,55 85 70,93,94,113 114,115
Lipocalin-2 <sup>96</sup>	endothelial dysfunction, cardiomyocyte apoptosis	97-100

Abbreviations: ANP, atrial natriuretic peptide; DAMPs, danger/damage-associated molecular patterns; DCs, dendritic cells; HMGB1, high-mobility group box 1; IL, interleukin; MCP-1, monocytes chemoattractant protein-1; NO, nitric oxide; TNF $\alpha$ , tumor necrosis factor alpha.

targeting TNF $\alpha$  is controversial and requires further exploration.<sup>126</sup> This may be because pleiotropic TNF $\alpha$  effects may be involved in many beneficial physiologic, as well as pathologic, processes. For example, TNF $\alpha$  provides endogenous cyto-protective signals that prevent cardiomyocyte apoptosis following ischemic injury.<sup>127</sup> Additionally, TNF type 1 receptor deficiency was associated with accelerated myocardial death.<sup>128</sup> Overall, the cardiomodulatory effects of TNF $\alpha$  and other cytokines likely depend on factors such as cell type and timing and extent of inhibition.

We propose that IL-1 $\beta$  is a major mediator between HF and peripheral tissues. In fact, multiple studies have targeted IL-1 $\beta$ . Canakinumab, a neutralizing antibody against IL-1 $\beta$ , and anakinra, a recombinant IL-1 receptor antagonist, were shown to exert beneficial effects on acute MI in animal models.<sup>129,130</sup> Several clinical trials identified therapeutic benefits by blocking IL-1 $\beta$ .<sup>131,132</sup> Anakinra successfully reduced adverse remodeling in patients with an MI and reduced the level of C-reactive protein, a common biomarker used to determine the severity of inflammation.<sup>133,134</sup> Patients diagnosed with HF were treated with Anakinra and subjected to exercise performance testing. Two weeks of the Anakinra treatment significantly increased oxygen consumption, decreased carbon dioxide retention and exercise performance with significant reduction in IL-1 $\beta$ , C-reactive protein and IL-6 serum profiles.<sup>135</sup> These correlated with a previous study in which patients with RA treated with Anakinra had improved cardiac function. A single injection of Anakinra resulted in increased blood flow in 3 h.<sup>136</sup> The commercial usage of Anakinra was approved by Food and Drug Administration in 2001. However, it was for treating patients with RA not chronic HF, although multiple studies demonstrated cardiac benefits of Anakinra in treating RA.<sup>137–139</sup>

There also have been therapeutic efforts to target IL-18 and inflammasome activation. A recombinant human IL-18 binding protein and neutralizing antibody for IL-18 have been developed, and initial clinical trials to treat patients with RA are ongoing.<sup>140,141</sup> In subjects with moderate to severe RA, IL-18 binding protein shows a favorable safety profile and is well tolerated in healthy volunteers. Because IL-18 binding protein stays in circulation much longer than any other inhibitors previously described, it has attracted a lot of attention.<sup>141,142</sup> Antagonists targeting P2X<sub>7</sub> receptors have also been tested to potentially block inflammasome activation. Many successful cases have been shown; they limit neuronal damage and lung, liver and kidney injury in several animal models.<sup>143–146</sup> Currently, the safety and efficacy of P2X<sub>7</sub> receptor antagonists are being investigated and have progressed to phase 2 clinical trials. However, their main use is to target inflammatory bowel disease, RA and chronic obstructive airway disease.<sup>147</sup>

## CONCLUDING REMARKS

Myocardial ischemia- and I/R-induced inflammation involve NLRP3 inflammasome activation. One principal trigger for inflammasome activation is the recognition of mitochondrial

DAMPs. This results in the production and secretion of pro-inflammatory cytokines, including IL-1 $\beta$  and IL-18 (Table 1). These and other factors produced by the heart during inflammation can have local effects. They can also crosstalk with other peripheral tissues via endocrine effects. For example, HF is associated with dramatic changes in the spleen, skeletal muscle wasting, alterations in adipose metabolism and kidney function. The extent and significance of bidirectional crosstalk between the heart and other organs may have been underappreciated, but is now becoming more established and may represent a logical focus of therapeutic interventions in the future.

## CONFLICT OF INTEREST

The authors declare no conflict of interest.

## ACKNOWLEDGEMENTS

Related research in the author's laboratory is funded by the Canadian Diabetes Association, the Heart & Stroke Foundation of Canada and the Canadian Institutes of Health Research. We thank Lesia Szyca for the excellent graphic illustration of Figures 1 and 2.

- 1 Nabel EG, Braunwald E. A tale of coronary artery disease and myocardial infarction. *N Engl J Med* 2012; **366**: 54–63.
- 2 Abel ED, Litwin SE, Sweeney G. Cardiac remodeling in obesity. *Physiol Rev* 2008; **88**: 389–419.
- 3 Heusch G, Libby P, Gersh B, Yellon D, Bohm M, Lopaschuk G *et al*. Cardiovascular remodelling in coronary artery disease and heart failure. *Lancet* 2014; **383**: 1933–1943.
- 4 Mozaffari MS, Liu JY, Abebe W, Baban B. Mechanisms of load dependency of myocardial ischemia reperfusion injury. *Am J Cardiovasc Dis* 2013; **3**: 180–196.
- 5 Chen GY, Nunez G. Sterile inflammation: sensing and reacting to damage. *Nat Rev Immunol* 2010; **10**: 826–837.
- 6 Nakayama H, Otsu K. Translation of hemodynamic stress to sterile inflammation in the heart. *Trends Endocrinol Metab* 2013; **24**: 546–553.
- 7 Takahashi M. NLRP3 inflammasome as a novel player in myocardial infarction. *Int Heart J* 2014; **55**: 101–105.
- 8 Marchant DJ, Boyd JH, Lin DC, Granville DJ, Garmaroudi FS, McManus BM. Inflammation in myocardial diseases. *Circ Res* 2012; **110**: 126–144.
- 9 Doroudgar S, Glembotski CC. The cardiokine story unfolds: ischemic stress-induced protein secretion in the heart. *Trends Mol Med* 2011; **17**: 207–214.
- 10 Zheng Y, Gardner SE, Clarke MC. Cell death, damage-associated molecular patterns, and sterile inflammation in cardiovascular disease. *Arterioscler Thromb Vasc Biol* 2011; **31**: 2781–2786.
- 11 Bergsbaken T, Fink SL, Cookson BT. Pyroptosis: host cell death and inflammation. *Nat Rev Microbiol* 2009; **7**: 99–109.
- 12 Lu A, Wu H. Structural mechanisms of inflammasome assembly. *FEBS J* 2015; **282**: 435–444.
- 13 Lechtenberg BC, Mace PD, Riedl SJ. Structural mechanisms in NLR inflammasome signaling. *Curr Opin Struct Biol* 2014; **29**: 17–25.
- 14 Latz E, Xiao TS, Stutz A. Activation and regulation of the inflammasomes. *Nat Rev Immunol* 2013; **13**: 397–411.
- 15 de Zoete MR, Palm NW, Zhu S, Flavell RA. Inflammasomes. *Cold Spring Harb Perspect Biol* 2014; **6**: a016287.
- 16 Abderrazak A, Syrovets T, Couchie D, El Hadri K, Friguet B, Simmet T *et al*. NLRP3 inflammasome: from a danger signal sensor to a regulatory node of oxidative stress and inflammatory diseases. *Redox Biol* 2015; **4**: 296–307.
- 17 Rosca MG, Tandler B, Hoppel CL. Mitochondria in cardiac hypertrophy and heart failure. *J Mol Cell Cardiol* 2013; **55**: 31–41.

- 18 Hollander JM, Thapa D, Shepherd DL. Physiological and structural differences in spatially distinct subpopulations of cardiac mitochondria: influence of cardiac pathologies. *Am J Physiol Heart Circ Physiol* 2014; **307**: H1–H14.
- 19 Franchi L, Eigenbrod T, Nunez G. Cutting edge: TNF- $\alpha$  mediates sensitization to ATP and silica via the NLRP3 inflammasome in the absence of microbial stimulation. *J Immunol* 2009; **183**: 792–796.
- 20 Bauernfeind FG, Horvath G, Stutz A, Alnemri ES, MacDonald K, Speert D *et al*. Cutting edge: NF- $\kappa$ B activating pattern recognition and cytokine receptors license NLRP3 inflammasome activation by regulating NLRP3 expression. *J Immunol* 2009; **183**: 787–791.
- 21 Kanneganti TD, Lamkanfi M, Kim YG, Chen G, Park JH, Franchi L *et al*. Pannexin-1-mediated recognition of bacterial molecules activates the cryopyrin inflammasome independent of Toll-like receptor signaling. *Immunity* 2007; **26**: 433–443.
- 22 Zhou R, Tardivel A, Thorens B, Choi I, Tschopp J. Thioredoxin-interacting protein links oxidative stress to inflammasome activation. *Nat Immunol* 2010; **11**: 136–140.
- 23 Zhang Q, Raouf M, Chen Y, Sumi Y, Sursal T, Junger W *et al*. Circulating mitochondrial DAMPs cause inflammatory responses to injury. *Nature* 2010; **464**: 104–107.
- 24 Nakahira K, Haspel JA, Rathinam VA, Lee SJ, Dolinay T, Lam HC *et al*. Autophagy proteins regulate innate immune responses by inhibiting the release of mitochondrial DNA mediated by the NALP3 inflammasome. *Nat Immunol* 2011; **12**: 222–230.
- 25 Shimada K, Crother TR, Karlin J, Dagvadorj J, Chiba N, Chen S *et al*. Oxidized mitochondrial DNA activates the NLRP3 inflammasome during apoptosis. *Immunity* 2012; **36**: 401–414.
- 26 Zhou R, Yazdi AS, Menu P, Tschopp J. A role for mitochondria in NLRP3 inflammasome activation. *Nature* 2011; **469**: 221–225.
- 27 Cruz CM, Rinna A, Forman HJ, Ventura AL, Persechini PM, Ojcius DM. ATP activates a reactive oxygen species-dependent oxidative stress response and secretion of proinflammatory cytokines in macrophages. *J Biol Chem* 2007; **282**: 2871–2879.
- 28 Shires SE, Gustafsson AB. Mitophagy and heart failure. *J Mol Med (Berl)* 2015; **93**: 253–262.
- 29 Harris J, Hartman M, Roche C, Zeng SG, O'Shea A, Sharp FA *et al*. Autophagy controls IL-1 $\beta$  secretion by targeting pro-IL-1 $\beta$  for degradation. *J Biol Chem* 2011; **286**: 9587–9597.
- 30 Saitoh T, Fujita N, Jang MH, Uematsu S, Yang BG, Satoh T *et al*. Loss of the autophagy protein Atg16L1 enhances endotoxin-induced IL-1 $\beta$  production. *Nature* 2008; **456**: 264–268.
- 31 Shi CS, Shenderov K, Huang NN, Kabat J, Abu-Asab M, Fitzgerald KA *et al*. Activation of autophagy by inflammatory signals limits IL-1 $\beta$  production by targeting ubiquitinated inflammasomes for destruction. *Nat Immunol* 2012; **13**: 255–263.
- 32 Kawaguchi M, Takahashi M, Hata T, Kashima Y, Usui F, Morimoto H *et al*. Inflammasome activation of cardiac fibroblasts is essential for myocardial ischemia/reperfusion injury. *Circulation* 2011; **123**: 594–604.
- 33 Shinde AV, Frangogiannis NG. Fibroblasts in myocardial infarction: a role in inflammation and repair. *J Mol Cell Cardiol* 2014; **70**: 74–82.
- 34 Mezzaroma E, Toldo S, Farkas D, Seropian IM, Van Tassell BW, Salloum FN *et al*. The inflammasome promotes adverse cardiac remodeling following acute myocardial infarction in the mouse. *Proc Natl Acad Sci USA* 2011; **108**: 19725–19730.
- 35 Sandanger O, Ranheim T, Vinge LE, Bliksoen M, Alfsnes K, Finsen AV *et al*. The NLRP3 inflammasome is up-regulated in cardiac fibroblasts and mediates myocardial ischaemia-reperfusion injury. *Cardiovasc Res* 2013; **99**: 164–174.
- 36 Bracey NA, Gershkovich B, Chun J, Vilaysane A, Meijndert HC, Wright JR Jr. *et al*. Mitochondrial NLRP3 protein induces reactive oxygen species to promote Smad protein signaling and fibrosis independent from the inflammasome. *J Biol Chem* 2014; **289**: 19571–19584.
- 37 Park M, Sweeney G. Direct effects of adipokines on the heart: focus on adiponectin. *Heart Fail Rev* 2013; **18**: 631–644.
- 38 Turer AT, Hill JA, Elmquist JK, Scherer PE. Adipose tissue biology and cardiomyopathy: translational implications. *Circ Res* 2012; **111**: 1565–1577.
- 39 Romacho T, Elsen M, Rohrborn D, Eckel J. Adipose tissue and its role in organ crosstalk. *Acta Physiol (Oxf)* 2014; **210**: 733–753.
- 40 Rutkowski JM, Stern JH, Scherer PE. The cell biology of fat expansion. *J Cell Biol* 2015; **208**: 501–512.
- 41 Sun K, Kusminski CM, Scherer PE. Adipose tissue remodeling and obesity. *J Clin Invest* 2011; **121**: 2094–2101.
- 42 Amato MC, Giordano C. Visceral adiposity index: an indicator of adipose tissue dysfunction. *Int J Endocrinol* 2014; **2014**: 730827.
- 43 Britton KA, Fox CS. Ectopic fat depots and cardiovascular disease. *Circulation* 2011; **124**: e837–e841.
- 44 McKenney ML, Schultz KA, Boyd JH, Byrd JP, Alloosh M, Teague SD *et al*. Epicardial adipose excision slows the progression of porcine coronary atherosclerosis. *J Cardiothorac Surg* 2014; **9**: 2.
- 45 Kondo K, Shibata R, Unno K, Shimano M, Ishii M, Kito T *et al*. Impact of a single intracoronary administration of adiponectin on myocardial ischemia/reperfusion injury in a pig model. *Circ Cardiovasc Interv* 2010; **3**: 166–173.
- 46 Boudina S, Abel ED. Diabetic cardiomyopathy, causes and effects. *Rev Endocr Metab Disord* 2010; **11**: 31–39.
- 47 Wilson PW. Diabetes mellitus and coronary heart disease. *Am J Kidney Dis* 1998; **32**(5 Suppl 3): S89–S100.
- 48 Boudina S, Sena S, Theobald H, Sheng X, Wright JJ, Hu XX *et al*. Mitochondrial energetics in the heart in obesity-related diabetes: direct evidence for increased uncoupled respiration and activation of uncoupling proteins. *Diabetes* 2007; **56**: 2457–2466.
- 49 Regan TJ, Lyons MM, Ahmed SS, Levinson GE, Oldewurtel HA, Ahmad MR *et al*. Evidence for cardiomyopathy in familial diabetes mellitus. *J Clin Invest* 1977; **60**: 884–899.
- 50 Shimizu M, Umeda K, Sugihara N, Yoshio H, Ino H, Takeda R *et al*. Collagen remodelling in myocardia of patients with diabetes. *J Clin Path* 1993; **46**: 32–36.
- 51 Maedler K, Dharmadhikari G, Schumann DM, Stirling J. Interleukin-1 $\beta$  targeted therapy for type 2 diabetes. *Expert Opin Biol* 2009; **9**: 1177–1188.
- 52 Bujak M, Frangogiannis NG. The role of IL-1 in the pathogenesis of heart disease. *Arch Immunol Ther Exp (Warsz)* 2009; **57**: 165–176.
- 53 Mori MA, Bezy O, Kahn CR. Metabolic syndrome: is Nlrp3 inflammasome a trigger or a target of insulin resistance? *Circ Res* 2011; **108**: 1160–1162.
- 54 Fuentes-Antras J, Ioan AM, Tunon J, Egido J, Lorenzo O. Activation of toll-like receptors and inflammasome complexes in the diabetic cardiomyopathy-associated inflammation. *Int J Endocrinol Metab* 2014; **2014**: 847827.
- 55 Shimano M, Ouchi N, Walsh K. Cardiokines: recent progress in elucidating the cardiac secretome. *Circulation* 2012; **126**: e327–e332.
- 56 Aoyagi T, Matsui T. The cardiomyocyte as a source of cytokines in cardiac injury. *J Cell Sci Ther* 2011; **2012**: 003.
- 57 Pugh PJ, Jones RD, Jones TH, Channer KS. Heart failure as an inflammatory condition: potential role for androgens as immune modulators. *Eur J Heart Fail* 2002; **4**: 673–680.
- 58 Espel E, Garcia-Sanz JA, Aubert V, Menoud V, Sperisen P, Fernandez N *et al*. Transcriptional and translational control of TNF- $\alpha$  gene expression in human monocytes by major histocompatibility complex class II ligands. *Eur J Immunol* 1996; **26**: 2417–2424.
- 59 Trede NS, Geha RS, Chatila T. Transcriptional activation of IL-1 $\beta$  and tumor necrosis factor- $\alpha$  genes by MHC class II ligands. *J Immunol* 1991; **146**: 2310–2315.
- 60 Atefi G, Zetoune FS, Herron TJ, Jalife J, Bosmann M, Al-Aref R *et al*. Complement dependency of cardiomyocyte release of mediators during sepsis. *FASEB J* 2011; **25**: 2500–2508.
- 61 Song X, Kusakari Y, Xiao C-Y, Kinsella SD, Rosenberg MA, Scherrer-Crosbie M *et al*. mTOR attenuates the inflammatory response in cardiomyocytes and prevents cardiac dysfunction in pathological hypertrophy. *Am J Physiol Cell Physiol* 2010; **299**: C1256–C1266.
- 62 Comstock KL, Krown KA, Page MT, Martin D, Ho P, Pedraza M *et al*. LPS-induced TNF- $\alpha$  release from and apoptosis in rat cardiomyocytes: obligatory role for CD14 in mediating the LPS response. *J Mol Cell Cardiol* 1998; **30**: 2761–2775.
- 63 Kapadia S, Torre-Amione G, Yokoyama T, Mann DL. Soluble TNF binding proteins modulate the negative inotropic properties of TNF- $\alpha$  in vitro. *Am J Physiol* 1995; **268**(2 Pt 2): H517–H525.
- 64 Coletta AP, Clark AL, Banarjee P, Cleland JG. Clinical trials update: RENEWAL (RENAISSANCE and RECOVER) and ATTACH. *Eur J Heart Fail* 2002; **4**: 559–561.
- 65 Yokoyama T, Sekiguchi K, Tanaka T, Tomaru K, Arai M, Suzuki T *et al*. Angiotensin II and mechanical stretch induce production of tumor



- necrosis factor in cardiac fibroblasts. *Am J Physiol* 1999; **276**(6 Pt 2): H1968–H1976.
- 66 Atefi G, Zetoune FS, Herron TJ, Jalife J, Bosmann M, Al-Aref R *et al*. Complement dependency of cardiomyocyte release of mediators during sepsis. *Faseb j* 2011; **25**: 2500–2508.
- 67 Yamauchi-Takahara K, Ihara Y, Ogata A, Yoshizaki K, Azuma J, Kishimoto T. Hypoxic stress induces cardiac myocyte-derived interleukin-6. *Circulation* 1995; **91**: 1520–1524.
- 68 Fredj S, Bescond J, Louault C, Potreau D. Interactions between cardiac cells enhance cardiomyocyte hypertrophy and increase fibroblast proliferation. *J Cell Physiol* 2005; **202**: 891–899.
- 69 Shioi T, Matsumori A, Kihara Y, Inoko M, Ono K, Iwanaga Y *et al*. Increased expression of interleukin-1 beta and monocyte chemoattractant and activating factor/monocyte chemoattractant protein-1 in the hypertrophied and failing heart with pressure overload. *Circ Res* 1997; **81**: 664–671.
- 70 Sarkar S, Vellaichamy E, Young D, Sen S. Influence of cytokines and growth factors in ANG II-mediated collagen upregulation by fibroblasts in rats: role of myocytes. *Am J Physiol Heart Circ Physiol* 2004; **287**: H107–H117.
- 71 Koller KJ, Goeddel DV. Molecular biology of the natriuretic peptides and their receptors. *Circulation* 1992; **86**: 1081–1088.
- 72 Horio T, Nishikimi T, Yoshihara F, Matsuo H, Takishita S, Kangawa K. Inhibitory regulation of hypertrophy by endogenous atrial natriuretic peptide in cultured cardiac myocytes. *Hypertension* 2000; **35**: 19–24.
- 73 Houshmand F, Faghihi M, Zahedi S. Role of atrial natriuretic peptide in oxytocin induced cardioprotection. *Heart Lung Circ* 2015; **24**: 86–93.
- 74 Gruden G, Landi A, Bruno G. Natriuretic peptides, heart, and adipose tissue: new findings and future developments for diabetes research. *Diabetes Care* 2014; **37**: 2899–2908.
- 75 Szabo T, Postrach E, Mahler A, Kung T, Turhan G, von Haehling S *et al*. Increased catabolic activity in adipose tissue of patients with chronic heart failure. *Eur J Heart Fail* 2013; **15**: 1131–1137.
- 76 Fenzl M, Schnizer W, Aebli N, Schlegel C, Villiger B, Disch A *et al*. Release of ANP and fat oxidation in overweight persons during aerobic exercise in water. *Int J Sports Med* 2013; **34**: 795–799.
- 77 Bujak M, Dobaczewski M, Chatila K, Mendoza LH, Li N, Reddy A *et al*. Interleukin-1 receptor type 1 signaling critically regulates infarct healing and cardiac remodeling. *Am J Pathol* 2008; **173**: 57–67.
- 78 Si Y, Tsou CL, Croft K, Charo IF. CCR2 mediates hematopoietic stem and progenitor cell trafficking to sites of inflammation in mice. *J Clin Invest* 2010; **120**: 1192–1203.
- 79 Frangogiannis NG. Regulation of the inflammatory response in cardiac repair. *Circ Res* 2012; **110**: 159–173.
- 80 Cesta MF. Normal structure, function, and histology of the spleen. *Toxicol Pathol* 2006; **34**: 455–465.
- 81 Swirski FK, Nahrendorf M, Etzrodt M, Wildgruber M, Cortez-Retamozo V, Panizzi P *et al*. Identification of splenic reservoir monocytes and their deployment to inflammatory sites. *Science* 2009; **325**: 612–616.
- 82 Nahrendorf M, Pittet MJ, Swirski FK. Monocytes: protagonists of infarct inflammation and repair after myocardial infarction. *Circulation* 2010; **121**: 2437–2445.
- 83 Mahnke K, Schmitt E, Bonifaz L, Enk AH, Jonuleit H. Immature, but not inactive: the tolerogenic function of immature dendritic cells. *Immunity Cell Biol* 2002; **80**: 477–483.
- 84 Anzai A, Anzai T, Nagai S, Maekawa Y, Naito K, Kaneko H *et al*. Regulatory role of dendritic cells in postinfarction healing and left ventricular remodeling. *Circulation* 2012; **125**: 1234–1245.
- 85 Ismahil MA, Hamid T, Bansal SS, Patel B, Kingery JR, Prabhu SD. Remodeling of the mononuclear phagocyte network underlies chronic inflammation and disease progression in heart failure: critical importance of the cardiopleuric axis. *Circ Res* 2014; **114**: 266–282.
- 86 Smolina K, Wright FL, Rayner M, Goldacre MJ. Determinants of the decline in mortality from acute myocardial infarction in England between 2002 and 2010: linked national database study. *BMJ* 2012; **344**: d8059.
- 87 Tonelli M, Muntner P, Lloyd A, Manns BJ, Klarenbach S, Pannu N *et al*. Risk of coronary events in people with chronic kidney disease compared with those with diabetes: a population-level cohort study. *Lancet* 2012; **380**: 807–814.
- 88 Anavekar NS, McMurray JJ, Velazquez EJ, Solomon SD, Kober L, Rouleau JL *et al*. Relation between renal dysfunction and cardiovascular outcomes after myocardial infarction. *N Engl J Med* 2004; **351**: 1285–1295.
- 89 Szummer K, Lundman P, Jacobson SH, Schon S, Lindback J, Stenstrand U *et al*. Influence of renal function on the effects of early revascularization in non-ST-elevation myocardial infarction: data from the Swedish Web-System for Enhancement and Development of Evidence-Based Care in Heart Disease Evaluated According to Recommended Therapies (SWEDEHEART). *Circulation* 2009; **120**: 851–858.
- 90 Go AS, Chertow GM, Fan D, McCulloch CE, Hsu CY. Chronic kidney disease and the risks of death, cardiovascular events, and hospitalization. *N Engl J Med* 2004; **351**: 1296–1305.
- 91 Bock JS, Gottlieb SS. Cardiorenal syndrome: new perspectives. *Circulation* 2010; **121**: 2592–2600.
- 92 Ogawa M, Suzuki J, Takayama K, Senbonmatsu T, Hirata Y, Nagai R *et al*. Impaired post-infarction cardiac remodeling in chronic kidney disease is due to excessive renin release. *Lab Invest* 2012; **92**: 1766–1776.
- 93 Ruiz-Ortega M, Ruperez M, Lorenzo O, Esteban V, Blanco J, Mezzano S *et al*. Angiotensin II regulates the synthesis of proinflammatory cytokines and chemokines in the kidney. *Kidney Int Suppl* 2002; **82**: S12–S22.
- 94 Kalra D, Sivasubramanian N, Mann DL. Angiotensin II induces tumor necrosis factor biosynthesis in the adult mammalian heart through a protein kinase C-dependent pathway. *Circulation* 2002; **105**: 2198–2205.
- 95 Moriyama T, Fujibayashi M, Fujiwara Y, Kaneko T, Xia C, Imai E *et al*. Angiotensin II stimulates interleukin-6 release from cultured mouse mesangial cells. *J Am Soc Nephrol* 1995; **6**: 95–101.
- 96 Siasos G, Tousoulis D, Michalea S, Oikonomou E, Vavuranakis M, Athanasiou D *et al*. Novel biomarkers assessing renal function in heart failure: relation to inflammatory status and cardiac remodeling. *Curr Med Chem* 2014; **21**: 3976–3983.
- 97 Song E, Fan P, Huang B, Deng HB, Cheung BM, Feletou M *et al*. Deamidated lipocalin-2 induces endothelial dysfunction and hypertension in dietary obese mice. *J Am Heart Assoc* 2014; **3**: e000837.
- 98 Liu JT, Song E, Xu A, Berger T, Mak TW, Tse HF *et al*. Lipocalin-2 deficiency prevents endothelial dysfunction associated with dietary obesity: role of cytochrome P450 2C inhibition. *Br J Pharmacol* 2012; **165**: 520–531.
- 99 Xu G, Ahn J, Chang S, Eguchi M, Ogier A, Han S *et al*. Lipocalin-2 induces cardiomyocyte apoptosis by increasing intracellular iron accumulation. *J Biol Chem* 2012; **287**: 4808–4817.
- 100 Sung H, Choi JY, Lee SA, Lee KM, Han S, Jeon S *et al*. The association between the preoperative serum levels of lipocalin-2 and matrix metalloproteinase-9 (MMP-9) and prognosis of breast cancer. *BMC Cancer* 2012; **12**: 193.
- 101 Theilig F, Wu Q. ANP-induced signaling cascade and its implications in renal pathophysiology. *Am J Physiol Renal Physiol* 2015; **308**: F1047–F1055.
- 102 O'Tierney PF, Komolova M, Tse MY, Adams MA, Pang SC. Altered regulation of renal interstitial hydrostatic pressure and the renal renin-angiotensin system in the absence of atrial natriuretic peptide. *J Hypertens* 2008; **26**: 303–311.
- 103 Abu-Amarah I, Balment RJ. Vascular, renal, and endocrine responses to low-dose atrial natriuretic peptide in the fluid-balanced New Zealand genetically hypertensive rats with and without endogenous arginine vasopressin. *Can J Physiol Pharmacol* 1999; **77**: 102–110.
- 104 Damman K, Testani JM. The kidney in heart failure: an update. *Eur Heart J* 2015; **36**: 1437–1444.
- 105 Ebner N, Elsner S, Springer J, von Haehling S. Molecular mechanisms and treatment targets of muscle wasting and cachexia in heart failure: an overview. *Curr Opin Support Palliat Care* 2014; **8**: 15–24.
- 106 von Haehling S, Steinbeck L, Doehner W, Springer J, Anker SD. Muscle wasting in heart failure: an overview. *Int J Biochem Cell Biol* 2013; **45**: 2257–2265.
- 107 Marzetti E, Calvani R, Cesari M, Buford TW, Lorenzi M, Behnke BJ *et al*. Mitochondrial dysfunction and sarcopenia of aging: from signaling pathways to clinical trials. *Int J Biochem Cell Biol* 2013; **45**: 2288–2301.
- 108 Sakuma K, Aoi W, Yamaguchi A. Current understanding of sarcopenia: possible candidates modulating muscle mass. *Pflugers Arch* 2015; **467**: 213–229.

- 109 Li YP, Schwartz RJ, Waddell ID, Holloway BR, Reid MB. Skeletal muscle myocytes undergo protein loss and reactive oxygen-mediated NF-kappaB activation in response to tumor necrosis factor alpha. *Faseb j* 1998; **12**: 871–880.
- 110 Dalla Libera L, Sabbadini R, Renken C, Ravara B, Sandri M, Betto R *et al*. Apoptosis in the skeletal muscle of rats with heart failure is associated with increased serum levels of TNF-alpha and sphingosine. *J Mol Cell Cardiol* 2001; **33**: 1871–1878.
- 111 Gielen S, Adams V, Mobius-Winkler S, Linke A, Erbs S, Yu J *et al*. Anti-inflammatory effects of exercise training in the skeletal muscle of patients with chronic heart failure. *J Am Coll Cardiol* 2003; **42**: 861–868.
- 112 Adams V, Spate U, Krankel N, Schulze PC, Linke A, Schuler G *et al*. Nuclear factor-kappa B activation in skeletal muscle of patients with chronic heart failure: correlation with the expression of inducible nitric oxide synthase. *Eur J Cardiovasc Prev Rehabil* 2003; **10**: 273–277.
- 113 Crowley SD, Gurley SB, Herrera MJ, Ruiz P, Griffiths R, Kumar AP *et al*. Angiotensin II causes hypertension and cardiac hypertrophy through its receptors in the kidney. *Proc Natl Acad Sci USA* 2006; **103**: 17985–17990.
- 114 Sukhanov S, Semprun-Prieto L, Yoshida T, Michael Tabony A, Higashi Y, Galvez S *et al*. Angiotensin II, oxidative stress and skeletal muscle wasting. *Am J Med Sci* 2011; **342**: 143–147.
- 115 Delafontaine P, Akao M. Angiotensin II as candidate of cardiac cachexia. *Curr Opin Clin Nutr Metab Care* 2006; **9**: 220–224.
- 116 Saxena A, Russo I, Frangogiannis NG. Inflammation as a therapeutic target in myocardial infarction: learning from past failures to meet future challenges. *Transl Res* 2016; **167**: 152–166.
- 117 Listing J, Strangfeld A, Kekow J, Schneider M, Kapelle A, Wassenberg S *et al*. Does tumor necrosis factor alpha inhibition promote or prevent heart failure in patients with rheumatoid arthritis? *Arthritis Rheum* 2008; **58**: 667–677.
- 118 Behnam SM, Behnam SE, Koo JY. TNF-alpha inhibitors and congestive heart failure. *Skinmed* 2005; **4**: 363–368.
- 119 Chung ES, Packer M, Lo KH, Fasanmade AA, Willerson JT. Randomized, double-blind, placebo-controlled, pilot trial of infliximab, a chimeric monoclonal antibody to tumor necrosis factor-alpha, in patients with moderate-to-severe heart failure: results of the anti-TNF Therapy Against Congestive Heart Failure (ATTACH) trial. *Circulation* 2003; **107**: 3133–3140.
- 120 Pugh PJ, Jones TH, Channer KS. Acute haemodynamic effects of testosterone in men with chronic heart failure. *Eur Heart J* 2003; **24**: 909–915.
- 121 Moreira AL, Sampaio EP, Zmuidzinasa A, Frindt P, Smith KA, Kaplan G. Thalidomide exerts its inhibitory action on tumor necrosis factor alpha by enhancing mRNA degradation. *J Exp Med* 1993; **177**: 1675–1680.
- 122 Schandené L, Vandenbussche P, Crusiaux A, Alègre ML, Abramowicz D, Dupont E *et al*. Differential effects of pentoxifylline on the production of tumour necrosis factor-alpha (TNF-alpha) and interleukin-6 (IL-6) by monocytes and T cells. *Immunology* 1992; **76**: 30–34.
- 123 Skudicky D, Skudicky D, Candy G, Wisenbaugh T, Sareli P. Randomised investigation of effects of pentoxifylline on left-ventricular performance in idiopathic dilated cardiomyopathy. *Lancet* 1998; **351**: 1091–1093.
- 124 Skudicky D, Sliwa K, Bergemann A, Candy G, Sareli P. Reduction in Fas/APO-1 plasma concentrations correlates with improvement in left ventricular function in patients with idiopathic dilated cardiomyopathy treated with pentoxifylline. *Heart* 2000; **84**: 438–441.
- 125 Bahrman P, Hengst UM, Richartz BM, Figulla HR. Pentoxifylline in ischemic, hypertensive and idiopathic-dilated cardiomyopathy: effects on left-ventricular function, inflammatory cytokines and symptoms. *Eur J Heart Fail* 2004; **6**: 195–201.
- 126 Fildes JE, Shaw SM, Yonan N, Williams SG. The immune system and chronic heart failure: is the heart in control? *J Am Coll Cardiol* 2009; **53**: 1013–1020.
- 127 Misra A, Haudek SB, Knuefermann P, Vallejo JG, Chen ZJ, Michael LH *et al*. Nuclear factor- $\kappa$ B protects the adult cardiac myocyte against ischemia-induced apoptosis in a murine model of acute myocardial infarction. *Circulation* 2003; **108**: 3075–3078.
- 128 Monden Y, Kubota T, Inoue T, Tsutsumi T, Kawano S, Ide T *et al*. Tumor necrosis factor- $\alpha$  is toxic via receptor 1 and protective via receptor 2 in a murine model of myocardial infarction. *Am J Physiol Heart Circ Physiol* 2007; **293**: H743–H753.
- 129 Hwang MW, Matsumori A, Furukawa Y, Ono K, Okada M, Iwasaki A *et al*. Neutralization of interleukin-1beta in the acute phase of myocardial infarction promotes the progression of left ventricular remodeling. *J Am Coll Cardiol* 2001; **38**: 1546–1553.
- 130 Abbate A, Salloum FN, Vecile E, Das A, Hoke NN, Straino S *et al*. Anakinra, a recombinant human interleukin-1 receptor antagonist, inhibits apoptosis in experimental acute myocardial infarction. *Circulation* 2008; **117**: 2670–2683.
- 131 Dinarello CA, Simon A, van der Meer JW. Treating inflammation by blocking interleukin-1 in a broad spectrum of diseases. *Nat Rev Drug Discov* 2012; **11**: 633–652.
- 132 Dinarello CA, van der Meer JW. Treating inflammation by blocking interleukin-1 in humans. *Semin Immunol* 2013; **25**: 469–484.
- 133 Abbate A, Van Tassel BW, Biondi-Zoccai G, Kontos MC, Grizzard JD, Spillman DW *et al*. Effects of interleukin-1 blockade with anakinra on adverse cardiac remodeling and heart failure after acute myocardial infarction [from the Virginia Commonwealth University-Anakinra Remodeling Trial (2) (VCU-ART2) pilot study]. *Am J Cardiol* 2013; **111**: 1394–1400.
- 134 Abbate A, Van Tassel BW, Seropian IM, Toldo S, Robati R, Varma A *et al*. Interleukin-1beta modulation using a genetically engineered antibody prevents adverse cardiac remodeling following acute myocardial infarction in the mouse. *Eur J Heart Fail* 2010; **12**: 319–322.
- 135 Van Tassel BW, Arena RA, Toldo S, Mezzaroma E, Azam T, Seropian IM *et al*. Enhanced interleukin-1 activity contributes to exercise intolerance in patients with systolic heart failure. *PLoS ONE* 2012; **7**: e33438.
- 136 Ikonomidis I, Lekakis JP, Nikolaou M, Paraskevaidis I, Andreadou I, Kaplanoglou T *et al*. Inhibition of interleukin-1 by anakinra improves vascular and left ventricular function in patients with rheumatoid arthritis. *Circulation* 2008; **117**: 2662–2669.
- 137 Clark W, Jobanputra P, Barton P, Burls A. The clinical and cost-effectiveness of anakinra for the treatment of rheumatoid arthritis in adults: a systematic review and economic analysis. *Health Technol Assess* 2004; **8**: iii-iv, ix-x, 1–105.
- 138 Bresnihan B, Cobby M. Clinical and radiological effects of anakinra in patients with rheumatoid arthritis. *Rheumatology (Oxford)* 2003; **42** (Suppl 2): ii22–ii28.
- 139 Furst DE. Anakinra: review of recombinant human interleukin-1 receptor antagonist in the treatment of rheumatoid arthritis. *Clin Ther* 2004; **26**: 1960–1975.
- 140 Plater-Zyberk C, Joosten LA, Helsen MM, Sattoune-Roche P, Siegfried C, Alouani S *et al*. Therapeutic effect of neutralizing endogenous IL-18 activity in the collagen-induced model of arthritis. *J Clin Invest* 2001; **108**: 1825–1832.
- 141 Tak PP, Bacchi M, Bertolino M. Pharmacokinetics of IL-18 binding protein in healthy volunteers and subjects with rheumatoid arthritis or plaque psoriasis. *Eur J Drug Metab Pharmacokinet* 2006; **31**: 109–116.
- 142 Marchetti C, Chojnacki J, Toldo S, Mezzaroma E, Tranchida N, Rose SW *et al*. A novel pharmacologic inhibitor of the NLRP3 inflammasome limits myocardial injury after ischemia-reperfusion in the mouse. *J Cardiovasc Pharmacol* 2014; **63**: 316–322.
- 143 Gourine AV, Poputnikov DM, Zhernosek N, Melenchuk EV, Gerstberger R, Spyer KM *et al*. P2 receptor blockade attenuates fever and cytokine responses induced by lipopolysaccharide in rats. *Br J Pharmacol* 2005; **146**: 139–145.
- 144 Csolle C, Sperlagh B. Peripheral origin of IL-1beta production in the rodent hippocampus under in vivo systemic bacterial lipopolysaccharide (LPS) challenge and its regulation by P2X(7) receptors. *J Neuroimmunol* 2010; **219**: 38–46.
- 145 Riteau N, Gasse P, Fauconnier L, Gombault A, Couegnat M, Fick L *et al*. Extracellular ATP is a danger signal activating P2X7 receptor in lung inflammation and fibrosis. *Am J Respir Crit Care Med* 2010; **182**: 774–783.
- 146 Sugiyama T, Oku H, Shibata M, Fukuhara M, Yoshida H, Ikeda T. Involvement of P2X7 receptors in the hypoxia-induced death of rat retinal neurons. *Invest Ophthalmol Vis Sci* 2010; **51**: 3236–3243.
- 147 Arulkumaran N, Unwin RJ, Tam FW. A potential therapeutic role for P2X7 receptor (P2X7R) antagonists in the treatment of inflammatory diseases. *Expert Opin Investig Drugs* 2011; **20**: 897–915.

- 148 He J, Lu Y, Xia H, Liang Y, Wang X, Bao W *et al*. Circulating Mitochondrial DAMPs Are Not Effective Inducers of Proteinuria and Kidney Injury in Rodents. *PLoS ONE* 2015; **10**: e0124469.
- 149 Bergsbaken T, Cookson BT. Macrophage activation redirects yersinia-infected host cell death from apoptosis to caspase-1-dependent pyroptosis. *PLoS Pathog* 2007; **3**: e161.
- 150 Gruden G, Thomas S, Burt D, Zhou W, Chusney G, Gnudi L *et al*. Interaction of angiotensin II and mechanical stretch on vascular endothelial growth factor production by human mesangial cells. *J Am Soc Nephrol* 1999; **10**: 730–737.



**This work is licensed under a Creative Commons Attribution-NonCommercial-NoDerivs 4.0 International License. The images or other third party material in this article are included in the article's Creative Commons license, unless indicated otherwise in the credit line; if the material is not included under the Creative Commons license, users will need to obtain permission from the license holder to reproduce the material. To view a copy of this license, visit <http://creativecommons.org/licenses/by-nc-nd/4.0/>**