

METHODS AND RESOURCES

Systematically improved in vitro culture conditions reveal new insights into the reproductive biology of the human parasite *Schistosoma mansoni*

Jipeng Wang , Rui Chen, James J. Collins III *

Department of Pharmacology, UT Southwestern Medical Center, Dallas, Texas, United States of America

* jamesj.collins@UTSouthwestern.edu



 OPEN ACCESS

Citation: Wang J, Chen R, Collins JJ III (2019) Systematically improved in vitro culture conditions reveal new insights into the reproductive biology of the human parasite *Schistosoma mansoni*. PLoS Biol 17(5): e3000254. <https://doi.org/10.1371/journal.pbio.3000254>

Academic Editor: Mariana Federica Wolfner, Cornell University, UNITED STATES

Received: November 30, 2018

Accepted: April 18, 2019

Published: May 8, 2019

Copyright: © 2019 Wang et al. This is an open access article distributed under the terms of the [Creative Commons Attribution License](https://creativecommons.org/licenses/by/4.0/), which permits unrestricted use, distribution, and reproduction in any medium, provided the original author and source are credited.

Data Availability Statement: All relevant data are within the paper and its Supporting Information files.

Funding: The work was supported by the National Institutes of Health (R01 R01AI121037), the Wellcome Trust (107475/Z/15/Z) and the Welch Foundation (I-1948-20180324). The funders had no role in study design, data collection and analysis, decision to publish, or preparation of the manuscript.

Abstract

Schistosomes infect over 200 million people. The prodigious egg output of these parasites is the sole driver of pathology due to infection, yet our understanding of sexual reproduction by schistosomes is limited because normal egg production is not sustained for more than a few days in vitro. Here, we describe culture conditions that support schistosome sexual development and sustained egg production in vitro. Female schistosomes rely on continuous pairing with male worms to fuel the maturation of their reproductive organs. Exploiting these new culture conditions, we explore the process of male-stimulated female maturation and demonstrate that physical contact with a male worm, and not insemination, is sufficient to induce female development and the production of viable parthenogenetic haploid embryos. We further report the characterization of a nuclear receptor (NR), which we call Vitellogenic Factor 1 (VF1), that is essential for female sexual development following pairing with a male worm. Taken together, these results provide a platform to study the fascinating sexual biology of these parasites on a molecular level, illuminating new strategies to control schistosome egg production.

Introduction

Schistosomes are blood-dwelling parasitic flatworms that cause serious disease in millions of people in the developing world [1]. The pathology caused by these parasites is entirely due to the parasite's prodigious egg output [2]. Although the goal of the parasite is to pass these eggs from the host to ensure the continuity of the parasite's complex life cycle, approximately half of these eggs become trapped in host tissues, inducing inflammation that represents the primary driver of disease [3]. Since parasites incapable of producing eggs produce little pathology in infected hosts, understanding the biology of schistosome egg production could suggest new therapeutic strategies aimed at diminishing the pathogenesis and spread of these devastating parasites.

Schistosomes are unusual among flatworms because they do not sexually reproduce as hermaphrodites. Instead, schistosomes have evolved separate male and female sexes [2,4,5]. This

Competing interests: The authors have declared that no competing interests exist.

Abbreviations: ABC169, Ascorbic Acid, Blood Cells, Cholesterol, and BM169; BM, Basch's medium 169; BODIPY, boron dipyrromethene; D, day; DBD, DNA-binding domain; DIC, differential interference contrast; dsRNA, double-stranded RNA; EdU, 5-ethynyl-2'-deoxyuridine; FBS, fetal bovine serum; FISH, fluorescent in situ hybridization; *H2B*, *Histone H2B*; LBD, ligand-binding domain; LDL, low-density lipoprotein; *myb/sant like*, Myb/SANT-like DNA-binding domain-containing protein; M199, Medium 199; NIAID, National Institute of Allergy and Infectious Diseases; NIH, National Institutes of Health; NR, nuclear receptor; PBSTx, PBS + 0.3% Triton X-100; *pro his rich prot.*, Proline-Histidine-rich protein; RBC, red blood cell; RNAi, RNA interference; RXR, retinoid X receptor; *sod*, extracellular superoxide dismutase [Cu-Zn]; *tes*, trematode eggshell synthesis protein; VF1, Vitellogenic Factor 1; *y +lat2*, Y+L amino acid transporter 2; ZnF-C4, Zinc finger, C4 type.

transition from hermaphroditism to dioecism has led to some intriguing biological phenomena, in particular the observation that female schistosomes rely on continuous pairing with a male worm to become sexually mature and produce eggs [2,6–8]. Indeed, females grown in the absence of male worms are developmentally stunted, and their reproductive organs are undeveloped. Upon pairing with a male worm, the female's sexual organs become mature, and egg production commences. Interestingly, this process is reversible since females deprived of male contact will regress to an immature state [9]. Although a variety of molecules important for female reproduction have been characterized [10–12], the nature of the signal(s) from the male that stimulate female maturation and the female response to these signals remain poorly understood.

A major impediment to understanding the biology of egg production and female sexual development is that normal egg production ceases within days of removal of the parasite from the host even in the presence of male worms [13–16]. While work by numerous investigators has established robust conditions for the maintenance [17–20] and growth of adult-staged parasites [15,21,22], no in vitro conditions that sustain continuous egg production have been described. Here, we report conditions that support long-term schistosome egg production in vitro and allow for virgin female worms to become sexually mature after pairing with a male worm. As a proof of principle, we use these culture conditions to explore the process by which male worms stimulate female maturation. We find that direct contact with a male worm along the female worm's entire body is essential for sexual maturation and viable egg production. We demonstrate that in the absence of sperm transfer, contact with a male worm is sufficient for female worms to produce viable parthenogenetic haploid embryos. Capitalizing on these culture conditions, we further report the characterization of a previously uncharacterized nuclear receptor (NR) that is essential for normal female development following pairing with a male worm. These studies provide new, to our knowledge, insights into the biology of schistosome egg production and lay the groundwork for the application of a growing molecular tool kit to understanding the fascinating sexual biology of these important pathogens.

Results

Medium containing ascorbic acid, red blood cells, and cholesterol supports *Schistosoma mansoni* egg production in vitro

The most successful systematic efforts for culturing schistosomes in vitro are those of Basch [15,21,22]. While Basch's "medium 169" (BM169) was able to support the in vitro growth of larval parasites to adulthood [21], it was insufficient for maintaining sexually mature egg-laying female parasites [15,22]. Nevertheless, given the success of BM169 at supporting parasite growth, we reasoned BM169 was the ideal starting point for optimizing conditions for egg production. As previously reported [15], adult schistosomes recovered from mice and cultured in BM169 progressively lost the ability to lay eggs with the morphological characteristics of those laid in vivo or immediately ex vivo (Fig 1A).

A schistosome egg comprises cells derived from two organs: the ovary, which contributes an oocyte, and the vitellaria, which provide 20–30 vitellocytes [2,23]. Although female worms paired with male worms retained the ability to produce oocytes during in vitro culture (S1A and S1B Fig), we noted a rapid loss in the ability of cultured parasites to generate vitellocytes, consistent with previous studies [14,16]. Vitellocytes contain two types of large cytoplasmic inclusions: lipid droplets and vitelline droplets that coalesce to form the eggshell [24,25]. Using Fast Blue BB to label vitelline droplets, we found that vitellaria progressively ceased production of large numbers of vitellocytes in BM169 (Fig 1B and 1C). Similarly, BODIPY 493/503 labeling found that the vitellaria of females in BM169 possessed few lipid droplets at day 20 (D20)

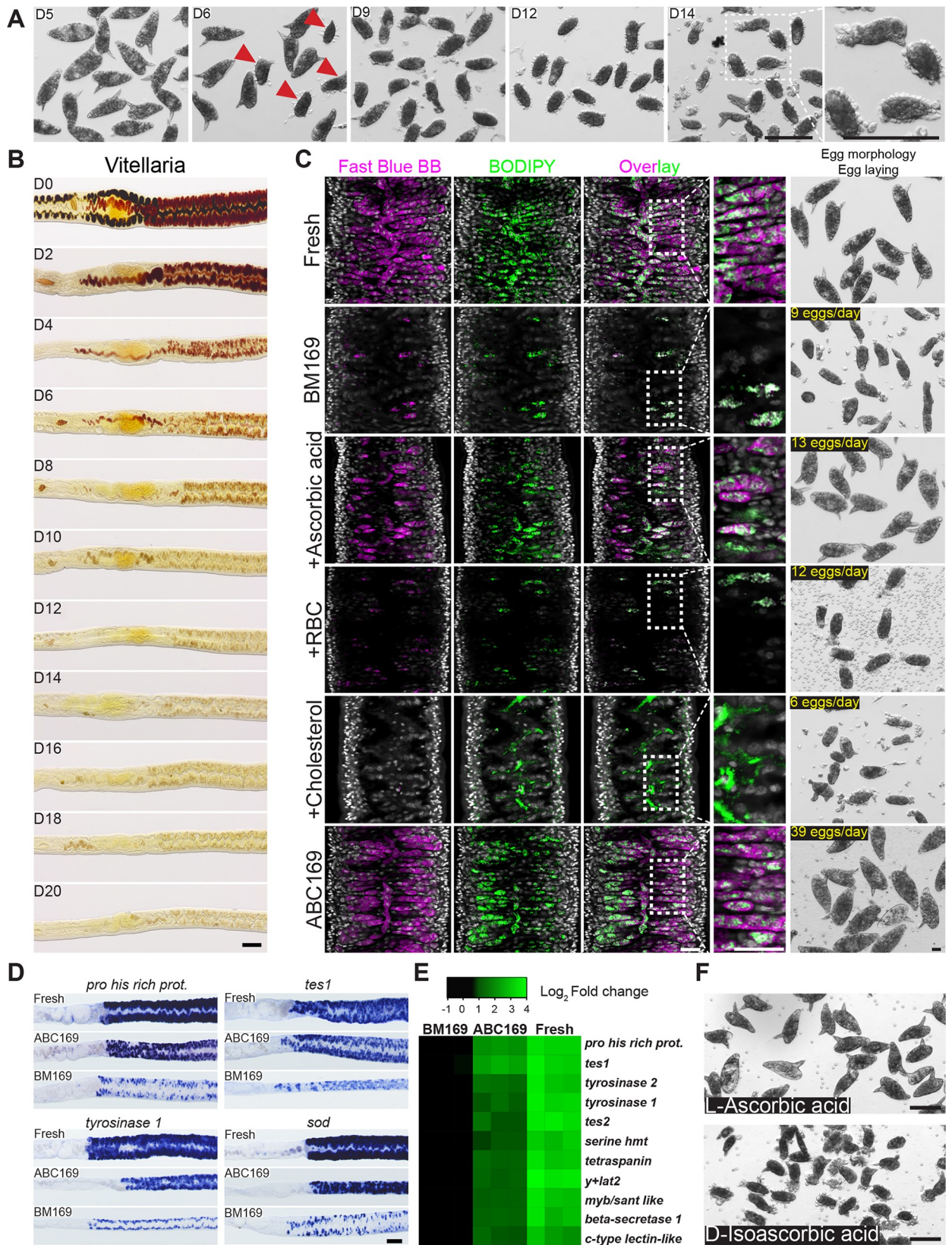


Fig 1. ABC169 supports the maintenance of schistosome vitellaria. (A) Morphological changes of eggs laid by worm pairs maintained in BM169. After D6, parasites began laying abnormally formed eggs (arrow). These eggs were small, usually did not contain a lateral spine, and did not possess a smooth surface. (B) Fast Blue BB staining (brownish-red labeling) showing loss of mature vitellocytes during culture in BM169. Representative images from 3 experiments with $n > 10$ parasites. (C) Confocal slice showing Fast Blue BB and BODIPY labeling of vitelline and lipid droplets in the vitellaria, respectively. Shown are freshly recovered parasites (“Fresh”) and schistosomes at D20 of cultivation in BM169 supplemented with RBCs, LDL supplement (Cholesterol), or ascorbic acid. ABC169 represents the combination of RBCs, LDL supplement, and ascorbic acid. Representative images from 3 experiments with $n > 10$ parasites. (D) Whole-mount in situ hybridization showing expression of vitellaria-enriched genes in freshly perfused female worms and parasites cultured in ABC169 or BM169 for 20 days. Representative images from 3 experiments with $n \geq 9$ parasites. (E) Heatmap showing relative expression of vitellaria-enriched transcripts in freshly perfused female worms (“Fresh”) and parasites cultured in ABC169 or BM169 for 20 days. Each column represents an independent biological replicate; samples are normalized to the expression of an arbitrarily chosen biological replicate from the BM169 group. Changes in expression between each of the 11 genes in BM169 and ABC169 were statistically significant ($p < 0.05$, t test). Underlying primary data can be found in [S1 Data](#). (F) Morphology of eggs laid by paired adult females in ABC169 supplemented with L-ascorbic acid or D-isoascorbic acid on D20. Representative of 3 experiments. Scale bars: A, B, D, F, 100 μm ; C, 25 μm . ABC169, Ascorbic Acid, Blood Cells, Cholesterol, and BM169; BM169, Basch’s medium 169; BODIPY, boron dipyrromethene; D, day; LDL, low-density lipoprotein; *myb/sant like*, Myb/SANT-like DNA-binding domain-containing protein; RBC, red blood cell; *sod*, extracellular superoxide dismutase [Cu-Zn]; *tes*, trematode eggshell synthesis protein; *y+lat2*, Y+L amino acid transporter 2.

<https://doi.org/10.1371/journal.pbio.3000254.g001>

(Fig 1C). Examination of a panel of genes expressed in mature vitellocytes [26] by whole-mount in situ hybridization (Fig 1D) and quantitative PCR (Fig 1E) found a significant decrease in the expression of vitellaria-specific transcripts during culture, similar to previous studies [16]. Thus, the capacity for vitellogenesis is rapidly lost in vitro.

To improve the rate of vitellogenesis and egg production, we examined supplements that could potentially satisfy either known metabolic requirements for egg production (e.g., lipids [27]) or documented auxotrophies of the worm (e.g., polyamines, fatty acids, sterols [28–30]). From these analyses, we observed no qualitative effects on egg production from supplements, including albumin (e.g., lactalbumin or linoleic acid–oleic acid–albumin), spermidine, commercially available lipid supplements, commercially available antioxidant supplements, red blood cells (RBCs), low-density lipoprotein (LDL), L-carnitine, N-acetyl-cysteine, or sera from various species (chicken, bovine, or horse). During this process, however, we came across a report detailing the formation of abnormal eggs in schistosome-infected guinea pigs fed a vitamin C (L-ascorbic acid)-deficient diet [31]. Strikingly, addition of ascorbic acid to BM169 led to a marked increase in vitelline development (Fig 1C and S1C Fig) and the production of eggs morphologically similar to those laid by parasites immediately ex vivo (Fig 1C).

Although L-ascorbic acid had profound effects on the quality of eggs generated in vitro, the rate of egg production and development of the vitellaria remained inferior to that of fresh ex vivo parasites (Fig 1C). Thus, we re-examined some of the previous assessed media supplements. Given the critical role for lipid metabolism in egg production [27], we reasoned that adding complex sources of lipids (and other nutrients) that the parasite encounters in vivo might act synergistically with ascorbic acid. We found that supplementation with either RBCs or a commercial “cholesterol” concentrate containing purified LDL increased lipid stores along the intestine but had little effect on vitelline development or the production of normal eggs (Fig 1C). However, a combination of RBCs, the cholesterol/LDL concentrate, and ascorbic acid produced a dramatic increase in the rate of vitellogenesis (Fig 1C) and egg production (Fig 1C) and a marked increase in the expression of vitellaria-specific transcripts (Fig 1D and 1E). From here on, we refer to this formulation as ABC169 (Ascorbic Acid, Blood Cells, Cholesterol, and BM169).

In vertebrate cells, L-ascorbic acid acts not only as an antioxidant but as an essential cofactor for a variety of enzymes [32]. Mammals deficient in L-ascorbic acid cannot perform key enzymatic reactions (e.g., collagen hydroxylation), leading to symptoms commonly known as scurvy [32]. Interestingly, the effects of vitamin C to prevent scurvy are stereoselective because D-isoascorbic acid cannot replace L-ascorbic acid at equimolar concentrations [33]. Similarly, we observed that D-isoascorbic acid could not replace L-ascorbic acid in egg production (Fig

1F), suggesting that either L-ascorbic acid is selectively transported into cells or that it acts in a stereoselective fashion to facilitate one or more enzymatic reactions within the cell.

Parasites cultured in ABC169 produce eggs capable of developing into miracidia

We next examined the duration and quality of egg production in *S. mansoni* cultured in ABC169. After an initial peak, egg production from *S. mansoni* in BM169 dropped precipitously, and by D7 of culture, parasites laid approximately 13 egg-like masses per day (Fig 2A and 2B). We noted a similar peak in egg production using ABC169; however, after D7, these parasites sustained production of approximately 44 morphologically normal eggs per day (Fig 2A). Indeed, eggs laid in ABC169 possessed a lateral spine typical of *S. mansoni* eggs, had smooth shells, and contained a “germinal disc” corresponding to the early embryo (Fig 2B). Eggs freshly laid in ABC169 medium were larger on average than those laid in BM169 (Fig 2C) and contained similar numbers of nuclei as eggs laid by parasites freshly recovered from mice (Fig 2D). Because of a high concentration of phenolic proteins that originate in the vitelline droplets that form the eggshell, schistosome eggshells are highly autofluorescent [23]. In contrast to the egg-like masses from BM169, in which parasites produce few vitelline droplets (Fig 1C), eggs from parasites in ABC169 possessed autofluorescence comparable to those from parasites freshly ex vivo (Fig 2E). Furthermore, nearly half of the eggs laid by parasites at D18–20 of culture in ABC169 contained clusters of proliferative embryonic cells visualized by labeling with thymidine analog 5-ethynyl-2'-deoxyuridine (EdU) (Fig 2F and 2G). We found that parasites cultured out to 30 days in vitro retained strong Fast Blue BB labeling of the vitellaria (S2A Fig); eggs produced by these parasites between 28–30 days were morphologically normal and capable of entering embryogenesis (S2B Fig).

S. mansoni eggs are passed from the host to release larvae called miracidia [2]. Approximately 10%–20% of eggs laid on the first day cultured either in BM169 or ABC169 produced miracidia (S3 Fig). However, this rate dropped during time in culture (S3 Fig). While eggs laid in BM169 after D7 were incapable of liberating miracidia, about 1%–2% of eggs laid in ABC169 produced viable and morphologically normal miracidia (Fig 2H, S1 and S2 Movies). Furthermore, we found that miracidia recovered from eggs laid on D15 to D20 were capable of penetrating *Biomphalaria glabrata* snails ($n = 214/217$ total miracidia). However, after examining more than 25 infected *B. glabrata* snails, we only found two snails that shed viable cercariae (S3 Movie). Given the disparity between the rate of entering embryonic development (Fig 2G) and the capacity for these embryos to mature to miracidia (S3 Fig), together with the limited ability of these miracidia to generate cercariae after infecting snails, it is possible that cues from the host are necessary for the efficient development of *S. mansoni* embryos into infective miracidia. Indeed, schistosome eggs appear to acquire substantial nutrients from the surrounding environment, tripling in volume during miracidial development [23]. Thus, further studies exploring optimal growth conditions for schistosome egg development could address these issues.

ABC169 enhances egg production in *S. japonicum*

S. japonicum is a schistosome endemic to Asia that is also a commonly used schistosome model system. Since *S. japonicum* also progressively loses the ability to maintain normal egg production in vitro [14], we examined the ability of ABC169 to enhance *S. japonicum* egg production. Following 15 days of culture in BM169, female *S. japonicum* displayed reduced labeling with Fast Blue BB in their vitellaria (S4A Fig), and their eggs were smaller and misshapen (S4B Fig) and contained fewer vitellocytes than eggs from freshly perfused parasites (S4C Fig).

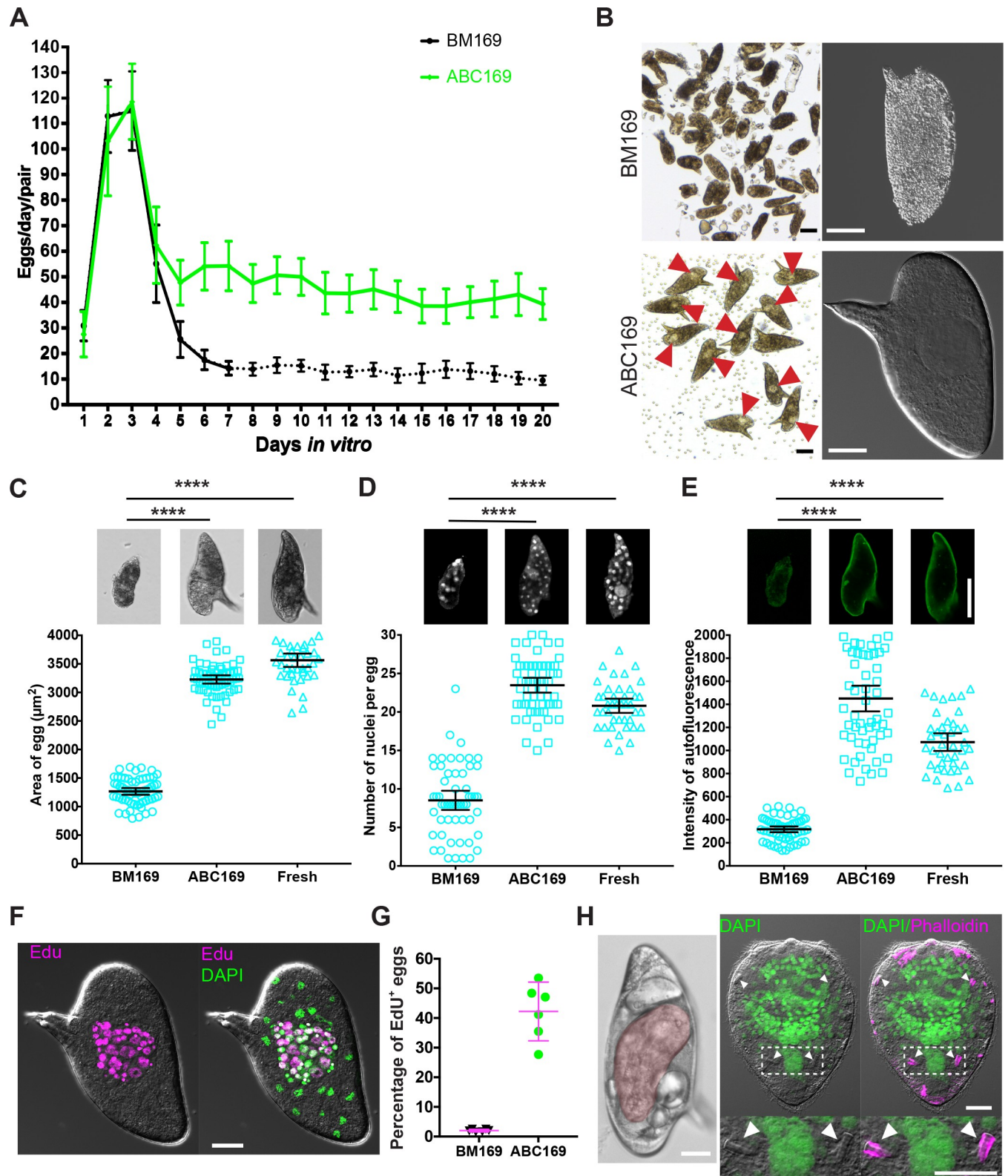


Fig 2. Eggs laid in ABC169 develop and hatch. (A) Rate of egg production per worm pair in BM169 or medium ABC169 during in vitro culture. Dotted line indicates the point at which parasites begin laying morphologically abnormal eggs. $n = 24$ worm pairs in BM169 and $n = 19$ in ABC169, examined in 4 experiments. Error bars represent 95% confidence intervals. (B) Morphology of eggs (left, bright field; right, DIC) laid by paired adult females in BM169 or

ABC169 on D20. Red arrows show early embryos in eggs laid in ABC169. (C–E) Quantification of the (C) size, (D) number of DAPI-labeled nuclei, and (E) autofluorescence intensity from eggs laid by freshly perfused female worms (Fresh, $n = 41$) and parasites cultured in BM169 ($n = 61$) or ABC169 ($n = 59$) on D20. In each group, eggs were harvested from 9 worm pairs across 3 separate experiments. **** $p < 0.0001$, t test. Error bars represent 95% confidence intervals. (F) EdU-labeled embryonic cells of an egg laid by a paired adult female in ABC169 on D20. (G) Percentage of eggs with clusters of cycling EdU⁺ embryonic cells from eggs laid between D16 and D22 by paired adult females in BM169 or ABC169. >2,000 eggs from 6 experiments. Error bars represent 95% confidence interval. (H) Miracidia from eggs laid in ABC169. Left, miracidium (pseudocolored red) inside an egg laid on D20 of culture in ABC169. Right, hatched miracidium from D20 egg labeled with DAPI and phalloidin. These miracidia appear grossly normal in morphology possessing 2 pairs of flame cells (arrows). Underlying primary data for panels A, C–E, and G can be found in [S1 Data](#). Scale bars: B, F, H, 20 μm ; C–E, 50 μm . ABC169, Ascorbic Acid, Blood Cells, Cholesterol, and BM169; BM169, Basch's medium 169; D, day; DIC, differential interference contrast; EdU, 5-ethynyl-2'-deoxyuridine.

<https://doi.org/10.1371/journal.pbio.3000254.g002>

Consistent with our observations of *S. mansoni*, female *S. japonicum* cultured in ABC169 displayed a strong deep red labeling in their vitellaria, and their eggs were morphologically similar to eggs from freshly perfused parasites (S4A–S4D Fig). Taken together, these data suggest that ABC169 is likely to be useful for the culture of *S. japonicum* parasites.

Immature virgin females mature sexually and produce viable eggs upon pairing with male worms in ABC169 medium

Studying the process by which male schistosomes stimulate female development has traditionally been challenging since females experience incomplete development following pairing with a male in vitro [34,35]. To examine sexual maturation in ABC169, we recovered immature virgin *S. mansoni* females from mice and paired these females with sexually mature virgin male worms. The vitellaria of paired immature females grown in BM169 were poorly developed (Fig 3A), and these parasites laid small numbers of morphologically abnormal eggs (Fig 3B). However, the vitellaria of newly paired immature virgin females cultured in ABC169 developed normal vitellaria (Fig 3A), and these parasites were capable of laying morphologically normal eggs beginning between D6–D7 of culture (Fig 3B and 3C). These eggs could initiate embryogenesis (Fig 3D, 42.7%, $n = 1,010$ from D16 to D22), and about 2% could develop to miracidia (eggs from D11–14, $n = 2,807$ eggs). Thus, ABC169 supports female development following pairing with a male worm.

Physical contact with a male worm is sufficient for female worms to produce viable parthenogenetic haploid embryos

Several theories have been put forward to explain the mechanism by which male worms stimulate female development [2,36–38]. However, the experiments supporting (or refuting) these hypotheses were conducted using suboptimal culture conditions [37] and in many cases have not been subject to extensive reproduction in the modern literature. Thus, we were compelled to revisit key observations using ABC169. The prevailing thought is that female development requires direct contact with a male worm [7,37,38]. The most intriguing studies supporting this hypothesis are those of Popiel and Basch [35]. These authors observed that small segments of male worms could stimulate vitelline development. Interestingly, vitelline development was confined to regions in direct contact with the male segment [35]. Consistent with these observations, we found a large fraction of small posterior fragments could pair with immature females (Fig 4A and 4B, S4 Movie). These posterior segments often paired with posterior regions of female worms, and consistent with observations of Popiel and Basch, vitelline maturation occurred only in regions in direct contact with the male segment (Fig 4B). Thus, pairing with a male initiates a signal that induces localized female vitelline maturation.

While culturing male posterior segments with female worms, we observed that these female worms laid morphologically normal eggs (Fig 4C). However, examination of these eggs found that they contained no embryos capable of incorporating EdU (Fig 4C). To explore this

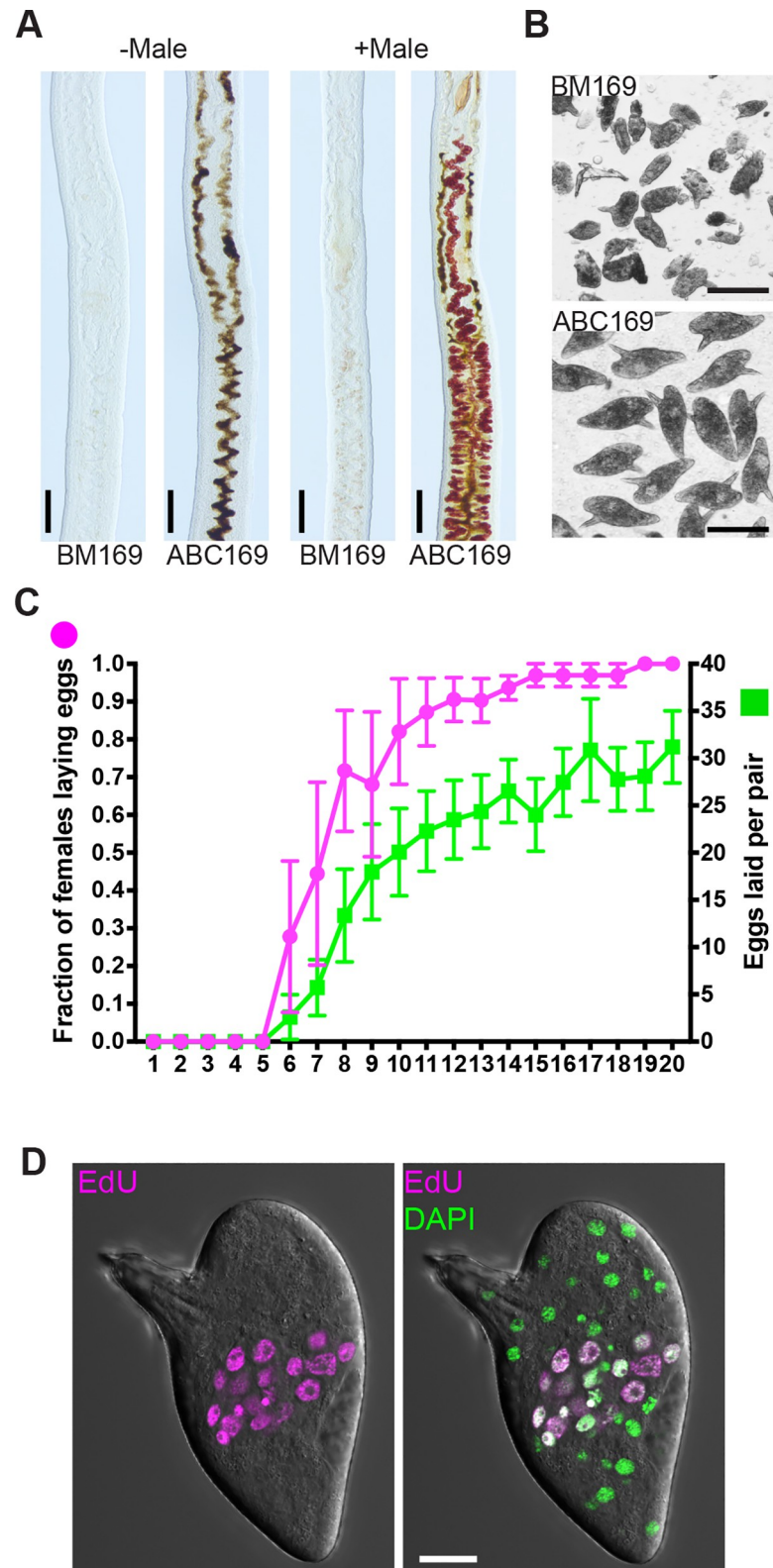


Fig 3. ABC169 supports the maturation of immature female schistosomes following pairing with a male worm. (A) Vitellaria development visualized by Fast Blue BB labeling in immature female schistosomes in the presence or absence of male worms in BM169 or ABC169 at D20 of culture. Black pigment in ABC169 parasites represents

digested RBCs. (B) Eggs laid by immature female in BM169 or ABC169 on day 20 after pairing with a male. (C) Proportion of females laying eggs (left axis, magenta) and number of eggs laid per worm pair (right axis, green) from D1 to D20 following pairing of immature females with male worms in ABC169. $n = 31$ worm pairs examined in 4 separate experiments. Error bars represent 95% confidence intervals. Underlying primary data can be found in [S1 Data](#). (D) Eggs laid by previously immature females commence embryonic development. Left, representative developing EdU-labeled embryo from egg laid in ABC169 on D20. Scale bars: A, B, 100 μm ; D, 20 μm . AB169, Ascorbic Acid, Blood Cells, Cholesterol, and BM169; BM169, Basch's medium 169; D, day; EdU, 5-ethynyl-2'-deoxyuridine; RBC, red blood cell.

<https://doi.org/10.1371/journal.pbio.3000254.g003>

observation in more detail, we examined the ovaries of the female worms paired with male segments and found no evidence of mature oocyte production (Fig 4D). Since the schistosome ovary is located anterior to the vitellaria and this region was not in contact with male posterior segments, we reasoned that ovaries, like the vitellaria, might also require local contact with a male worm to mature and begin oocyte production. To test this model, we amputated males behind the testes (Fig 4E) and paired the decapitated and castrated fragments with immature female worms. Since these large posterior fragments typically ensheathed the entire female worm (Fig 4E), we reasoned that this pairing might be sufficient to stimulate oogenesis. Consistent with this model, we found that ovaries of females paired with decapitated males produced oocytes (Fig 4F). Furthermore, these parasites had fully developed vitellaria along their entire length (Fig 4G) and laid morphologically normal eggs (Fig 4H).

Despite the fact that females paired with castrated male segments had no chance of being inseminated, we observed that eggs laid by these parasites possessed the ability to initiate embryogenesis (Fig 4H) and could even give rise to miracidia (0.23%, $n = 4,704$ eggs). Previous studies have suggested that female schistosomes can produce parthenogenetic offspring containing a haploid set of maternal chromosomes when mated with males of distantly related schistosome species [39,40]. From these experiments, it is not clear whether simply coming into contact with a male schistosome of another species is sufficient to induce the production of parthenogenetic offspring or whether parthenogenesis occurs only following the transfer of sperm [39,40]. Therefore, we examined the karyotypes of eggs laid by females paired with castrated males. Unlike the diploid karyotypes of embryos from eggs laid by freshly ex vivo parasites ($2n = 16$), mitotic cells from eggs laid by females paired with castrated males were haploid, containing only 8 chromosomes (Fig 4I and S5 Fig). These results suggest that only contact with a male worm along the entire length of the female body, and not insemination, is sufficient for the production of viable haploid embryos. These data highlight the value of ABC169 medium to enhance our understanding of schistosome reproductive biology.

A novel NR is required for the maturation of female vitellaria following pairing with a male worm

The ability of virgin females to mature upon pairing with a male in ABC169 (Fig 3A) provides an opportunity to discover novel regulators of male-induced female maturation. In virgin female worms, specialized stem cells located in primordial ovaries and vitellaria differentiate to oocytes or vitellocytes, respectively, after pairing with a male worm. Thus, the stem cells in the primordial reproductive organs must be capable of responding to external cues instructing these cells to produce differentiated progeny (i.e., oocytes or vitellocytes). Therefore, characterizing genes expressed in these stem cells could provide clues about molecules essential for maturation following pairing.

To discover genes expressed in the reproductive stem cells, we queried our previously published data set of genes expressed in the mature female vitellaria [26] and performed in situ hybridization on mature and immature female worms. From this analysis, we identified

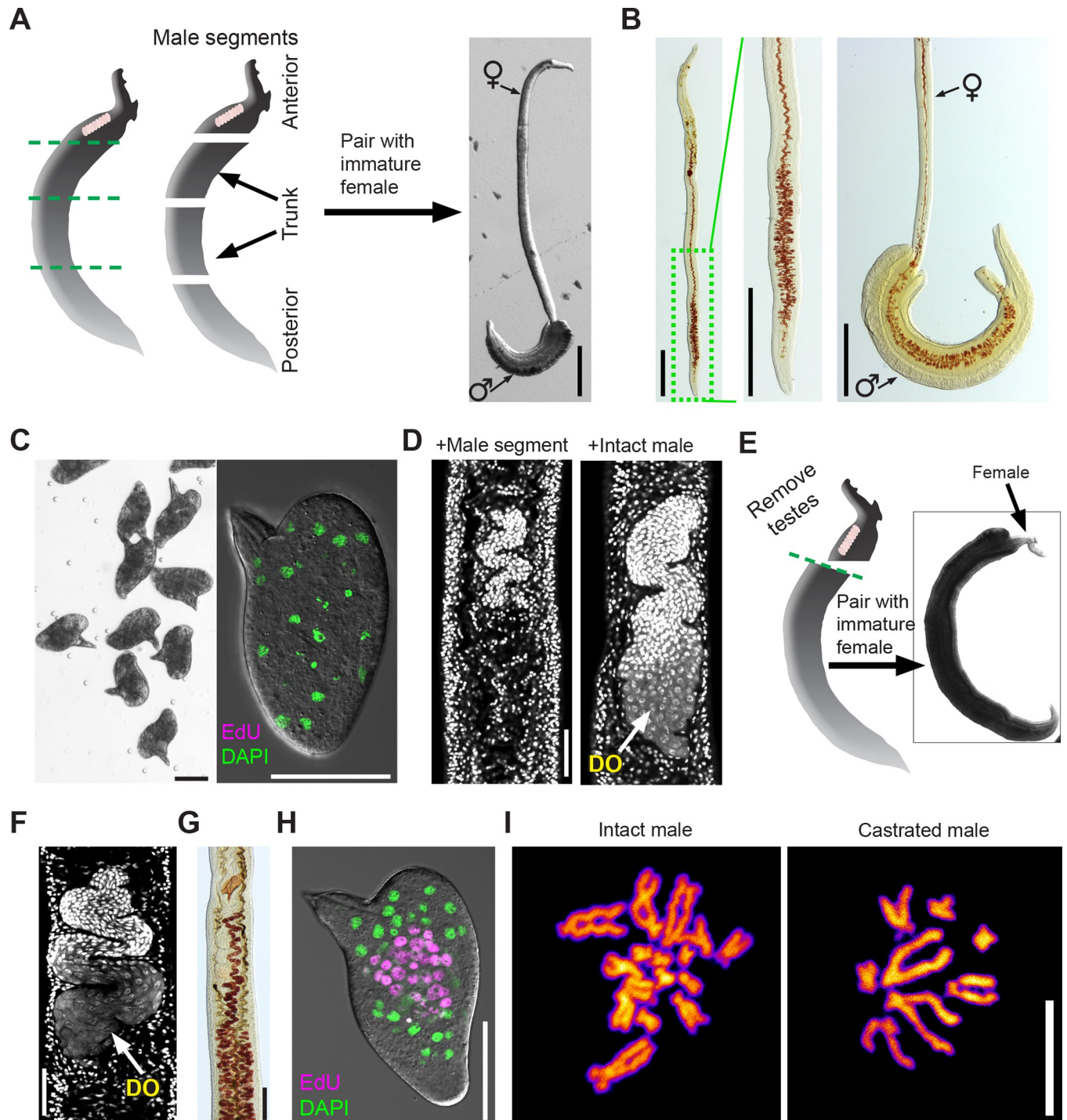


Fig 4. Using ABC169 to study schistosome male-induced female sexual maturation. (A) Pairing of immature females with amputated male segments. Left, cartoon showing approximate positions of male amputations. Most often, we observed posterior segments pairing with posterior region of immature females, shown to right. (B) Fast Blue BB labeling showing female vitellaria development after pairing with posterior male segments. Left panels, female after separation from male segment showing vitellaria development in posterior region. Right panel, female before separation from male segment showing vitellaria development is restricted to paired region. Representative of >40 female parasites examined in 4 separate experiments. (C) Eggs laid by immature female worms paired with male segments are morphologically normal (left) but do not contain developing embryos, as measured by EdU labeling (right). $n > 500$ eggs examined in 4 separate experiments. (D) DAPI staining to examine ovary development in immature females paired with intact male worms or an amputated posterior male segment. Females paired with intact males possess DOs ($n = 23$), whereas females paired with male segments produce no DOs ($n = 41$). (E) Pairing of immature females with decapitated and castrated male segments. Left, cartoon showing approximate positions of amputation, removing both the head and testes. These decapitated and castrated segments paired with females along most of the female body, shown to right. (F) DAPI staining to examine

ovary development in immature females paired with decapitated and castrated male segments. These ovaries contain DOs. Representative images from $n = 22$ parasites examined in 3 separate experiments. (G) Fast Blue BB showing vitellaria development in females after pairing with decapitated and castrated male segments. Representative images $n = 22$ parasites from 3 separate experiments. (H) EdU labeling showing embryonic development in eggs from females paired with decapitated and castrated male segments. 273/602 eggs laid between D16–D22 contained clusters of EdU⁺ cells. (I) DAPI labeling of metaphase spreads from eggs laid by (left) fresh ex vivo female parasites paired with intact males and (right) immature female parasites paired with decapitated and castrated male segments. Embryonic cells from fresh ex vivo parasites were diploid ($2n = 16$), whereas those from unfertilized females are haploid ($n = 8$). Scale bars: A, B, 500 μm ; C, D, F, H, 50 μm ; G, 100 μm ; I, 10 μm . ABC169, Ascorbic Acid, Blood Cells, Cholesterol, and BM169; BM169, Basch's medium 169; D, day; DO, differentiated oocyte; EdU, 5-ethynyl-2'-deoxyuridine.

<https://doi.org/10.1371/journal.pbio.3000254.g004>

Smp_248100 (previously known as *Smp_212440*), an uncharacterized protein that shares similarity to members of the NR family of ligand-activated transcription factors. Canonical NRs contain two key domains: a highly-conserved N-terminal DNA-binding domain (DBD) and a C-terminal ligand-binding domain (LBD) [41]. Primary sequence analysis confirmed that *Smp_248100* contained a DBD with high amino-acid identity to DBDs from other vertebrate and invertebrate NRs (Fig 5A and S6A Fig). However, examination of the *Smp_248100* C-terminus failed to identify a canonical LBD. Interestingly, the C-terminus of *Smp_248100* shared stretches of high amino-acid identity with orthologous proteins from other parasitic flatworms (S6B Fig), leaving open the possibility that this protein contains a divergent LBD.

By colorimetric in situ hybridization, we detected *Smp_248100* expression exclusively in the vitellaria of mature and immature females (Fig 5B). We failed to detect high-levels of specific expression in male parasites (Fig 5B). In immature females, the proliferative stem cells of the primordial vitellaria, also known as S1 cells [24], lie along the intestine in the posterior of the worm [16]. Thus, based on the expression of *Smp_248100* in immature females, we reasoned that this gene is expressed in the S1 stem cells of the primordial vitellaria. To examine this model, we used a proliferative cell marker, *Histone H2B* (*H2B*), to label the proliferative S1 cells [26]. Double fluorescent in situ hybridization (FISH) on immature female worms found that most *H2B*⁺ cells along the gut also expressed *Smp_248100* (Fig 5C), indicating *Smp_248100* is expressed in S1 cells within the primordial vitellaria. In mature females, we similarly detected *Smp_248100* in *H2B*⁺ S1 cells; however, we also detected *Smp_248100* expression in *H2B*⁻ cells adjacent to *H2B*⁺ cells (Fig 5D). Since we did not detect *Smp_248100* expression in fully mature vitellocytes within the vitelline duct (Fig 5D), we suggest that *Smp_248100*⁺ *H2B*⁻ cells are likely the immediate differentiation progeny of the S1 cells.

Based on the expression pattern, we hypothesized that *Smp_248100* may play a role in vitelline cell development. To examine this possibility, we performed RNA interference (RNAi) on immature virgin female worms in ABC169 and examined whether these parasites could become sexually mature and commence egg-laying upon pairing with male worms. We observed that a majority of the *Smp_248100*(RNAi)-treated female parasites failed to produce mature vitellocytes, as measured by Fast Blue BB staining (Fig 6A and 6B, S7 Fig) and in situ hybridization using the vitellocyte marker superoxide dismutase [26] (Fig 6B). Consistent with the effects of *Smp_248100* RNAi treatment on vitelline cell development, we noted a significant decline in the rate of egg production compared to controls (Fig 6C). Since *Smp_248100* is expressed in the proliferative S1 cells, we reasoned that the *Smp_248100*(RNAi) may result in either defects in stem cell maintenance or a defect in the ability of these cell to differentiate. To distinguish between these possibilities, we examined cell proliferation in the region of the vitellaria following *Smp_248100* RNAi treatment. We observed no difference in cell proliferation in the region of the vitellaria in *Smp_248100*(RNAi) parasites (Fig 6D), suggesting that this gene is dispensable for S1 cell maintenance. Thus, *Smp_248100* appears to be a key regulator of stem cell differentiation in the schistosome vitellaria. We also examined the effects of *Smp_248100* RNAi treatment on ovary development. Consistent with a lack of robust

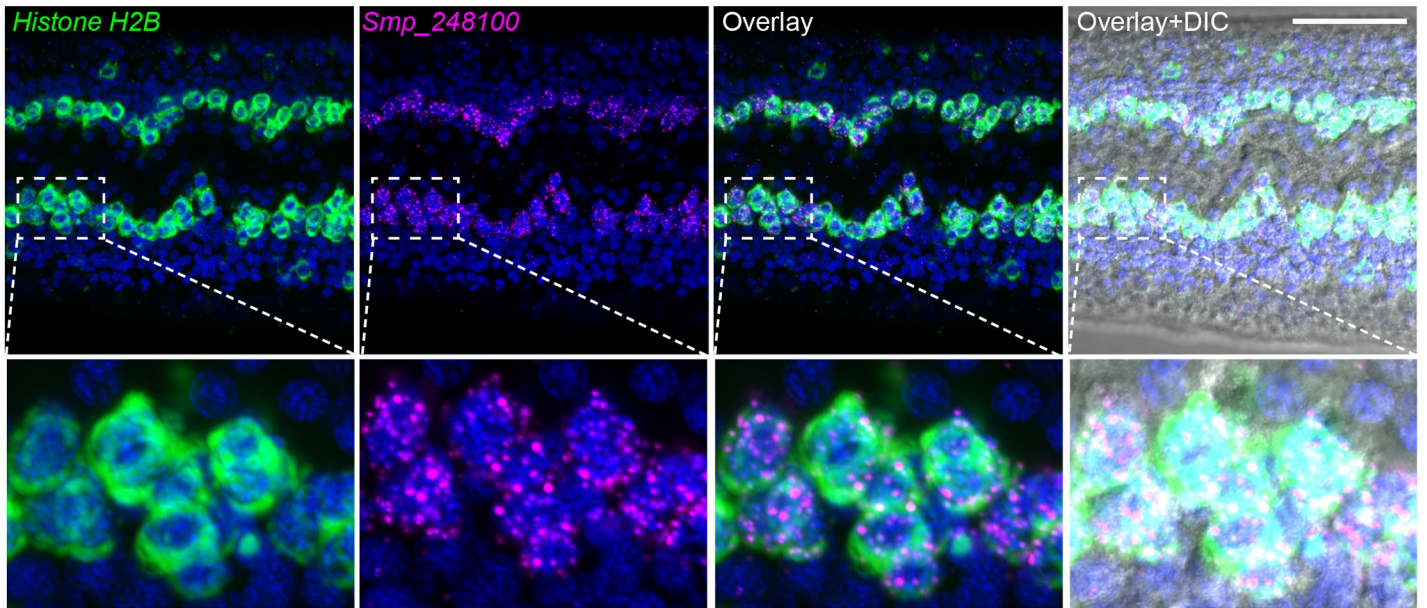
A Smp_248100:



B



C



D

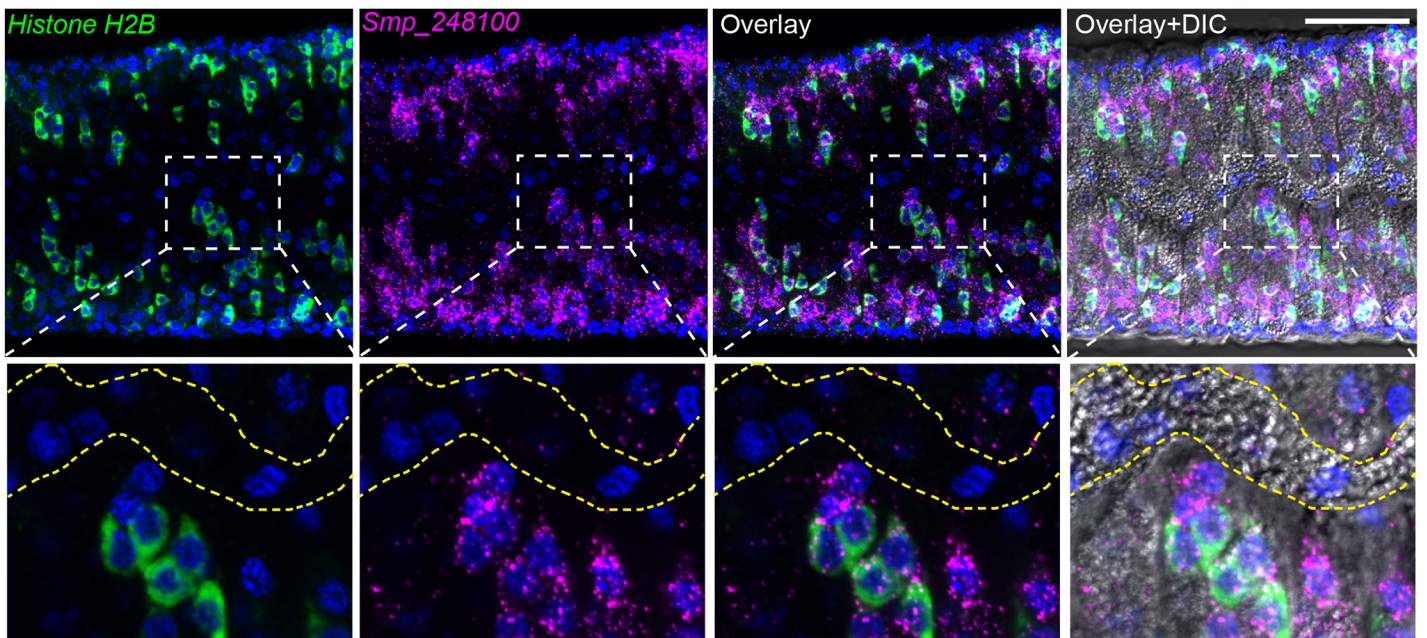


Fig 5. *Smp_248100* is expressed in the primordial vitellaria. (A) A schematic diagram of protein product encoded by *Smp_248100*. This protein contains a ZnF-C4 domain similar to other NR proteins. (B) Whole-mount in situ hybridization showing expression of *Smp_248100* in a mature female (left), immature female (middle), or male worm (right). *Smp_248100* highly expressed in female worms exclusively in the region of vitellaria. Representative images from 3 experiments with $n > 35$ parasites. Scale bar, 100 μm . (C–D) Two-color FISH for *H2B* (green) and *Smp_248100* (magenta) mRNAs on (C) immature females or (D) sexually mature females. In immature virgin females, *Smp_248100* was only expressed in $H2B^+$ cells. In adult females, *Smp_248100* was expressed in $H2B^+$ cells as well as some $H2B^-$ cells. We did not detect *Smp_248100* expression in mature vitellocytes in the vitelline duct (bounded by dashed yellow lines). Representative images from $n > 30$ parasites examined in 3 separate experiments. Scale bars: B, 100 μm ; C, 50 μm . DIC, differential interference contrast; FISH, fluorescent in situ hybridization; *H2B*, Histone H2B; NR, nuclear receptor; ZnF-C4, Zinc finger, C4 type.

<https://doi.org/10.1371/journal.pbio.3000254.g005>

Smp_248100 expression in the ovary, we detected no defect in the ability of *Smp_248100* RNAi-treated parasites to produce differentiated oocytes (Fig 6E). Given this specific role for *Smp_248100* in vitelline cell development, we propose this protein be called Vitellogenic Factor 1 (VF1).

Discussion

Here, we describe culture conditions that support sustained schistosome sexual development in vitro. Of all the components of ABC media, L-ascorbic acid appeared to have the most profound effect on sexual development and egg production. Since the effects of L-ascorbic acid are stereoselective (Fig 1F), it is likely its effects are related to either the transport of L-ascorbic acid into the cell or its activity on specific biological molecules. Among the potential targets of L-ascorbic acid are the tyrosinase enzymes present in mature vitellocytes. During the production of schistosome egg shells, tyrosinases in the vitellocytes are essential for crosslinking egg-shell proteins that coalesce to form the eggshell [42,43]. In vitro studies on tyrosinases suggest that L-ascorbic acid can enhance the activity of tyrosinases by reducing copper molecules in the active site of the enzyme [44]. Consistent with the model that L-ascorbic acid potentiates schistosome tyrosinase activity, inhibition of tyrosinase activity in female schistosomes results in eggshell deformations [43] that appear similar to eggs from schistosomes grown in vitro without L-ascorbic acid (Fig 1A). Future studies aimed at determining the function of vitamin C in schistosomes could suggest new approaches to suppressing egg production.

Our studies confirmed the importance of direct physical contact with a male in inducing female sexual maturation. Indeed, we found that contact with a castrated male along the entire length of the female body was sufficient to induce sexual maturation and the production of parthenogenetic haploid embryos (Fig 4I). The phenomenon of parthenogenetic sexual reproduction in *S. mansoni* has been observed several times in studies performing interspecies crosses (e.g., female *S. mansoni* \times male *S. japonicum*) inside mammal hosts [39,40,45]. However, given the propensity of certain schistosome species to form interspecies hybrids [46], it is challenging to distinguish between genetic hybridization and true parthenogenesis. Since our studies were conducted entirely under in vitro conditions using virgin females and castrated males, we believe these are the strongest evidence to date that female schistosomes require only contact with a male worm to generate viable haploid progeny. As studies in the field continue to explore the genetics of schistosomes in regions endemic for multiple schistosome species [47], it will be interesting to see if the production of parthenogenetic haploid offspring is common in natural schistosome populations.

Here, we demonstrate an essential role for the NR VF1 in the differentiation of schistosome vitellocytes. Several NRs (e.g., the estrogen receptor) are activated by sex hormones and go on to elicit transcriptional responses key to sexual development [48]. Given this, it is tantalizing to speculate that VF1 executes a pro-vitellogenic transcriptional program in response to activation by a schistosome sex hormone. Since our sequence analyses failed to identify a canonical LBD in the C-terminus of VF1, it is possible that VF1 lacks the capacity to bind traditional

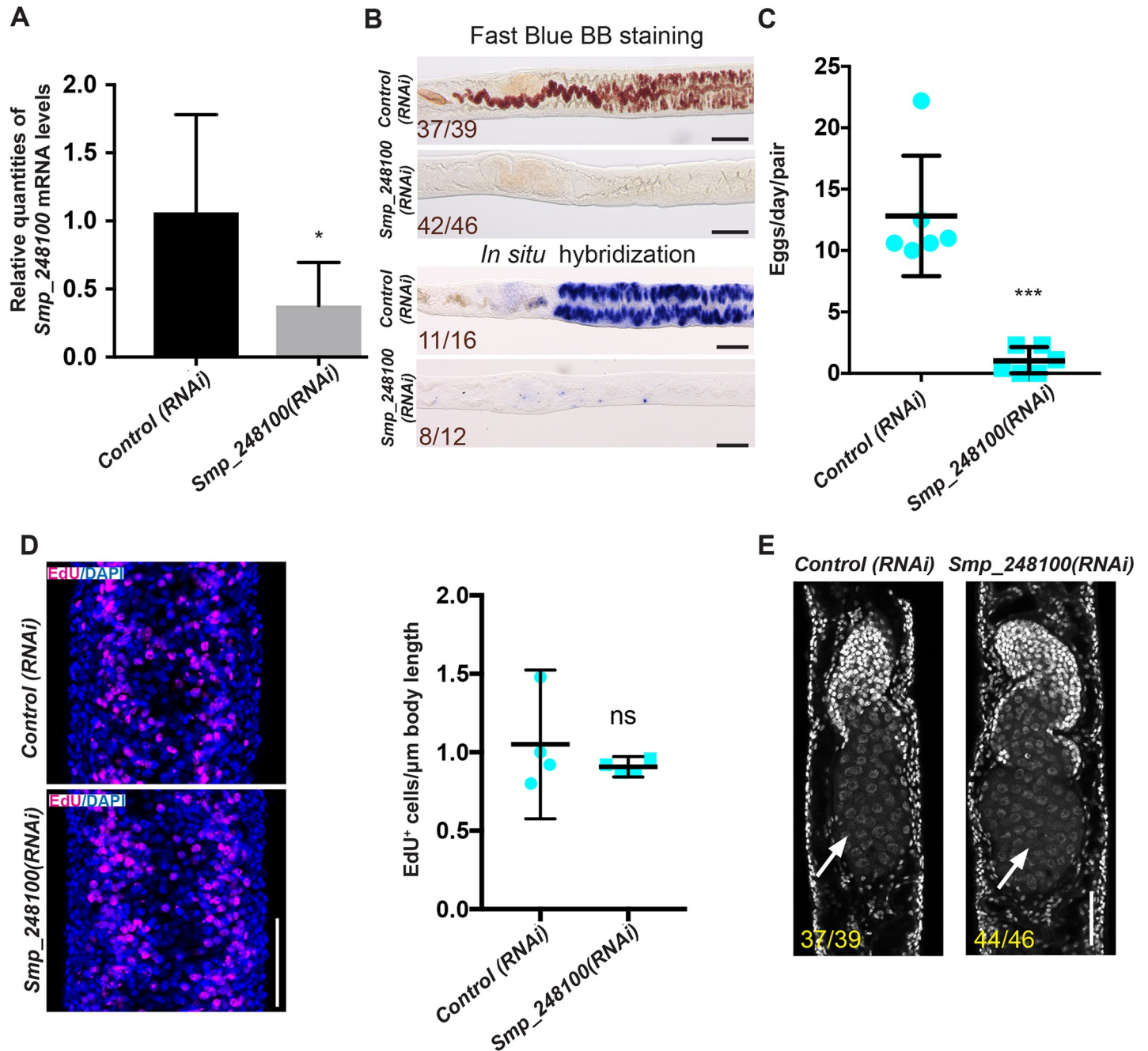


Fig 6. *Smp_248100* is specifically required for vitellaria maturation following pairing with a male worm. (A) qPCR showing decreased *Smp_248100* transcript levels in *Smp_248100*(RNAi) versus *control*(RNAi). * $p < 0.05$. Error bars indicate 95% confidence intervals calculated based on 4 separate experiments. (B) Loss of mature vitellaria in *Smp_248100*(RNAi) worms. Fast Blue BB labeling following control or *Smp_248100* RNAi treatment (top). Whole-mount *in situ* hybridization showing expression of the *sod* gene (a marker for vitellocytes) in control RNAi or *Smp_248100*(RNAi) worms (bottom). *Smp_248100*(RNAi) parasites produce few vitellocytes. Representative images from 4 separate experiments. (C) Plot showing egg production per worm pair between D12–D14 of RNAi treatment. Representative images from $n > 146$ parasites for each treatment examined in 6 separate experiments. *** $p < 0.001$, t test. Error bars represent 95% confidence intervals. (D) EdU labeling of proliferative cells following control or *Smp_248100* RNAi treatment. We observed no significant difference in the number of EdU-labeled nuclei between *control*(RNAi) and *Smp_248100*(RNAi) animals within the vitellaria. Representative images from $n > 41$ parasites for each treatment examined in 4 separate experiments. ns, $p > 0.05$, t test. Error bars represent 95% confidence intervals. (E) DAPI labeling showing ovaries from control and *Smp_248100* RNAi-treated female parasites at D14 after pairing with a male worm. Anterior towards the top; arrow indicates differentiated oocytes. Representative images from 4 separate experiments. Underlying primary data for panels A and C–D can be found in [S1 Data](#). Scale bars: B, 100 μ m; D, E, 50 μ m. D, day; EdU, 5-ethynyl-2'-deoxyuridine; ns, not significant; qPCR, quantitative PCR; RNAi, RNA interference; *sod*, extracellular superoxide dismutase [Cu-Zn].

<https://doi.org/10.1371/journal.pbio.3000254.g006>

hormone receptor ligands (e.g., steroids). However, the possibility remains that VF1 is activated by a noncanonical NR ligand. Indeed, examination of VF1 orthologs in other parasitic flatworms uncovered a region of extensive amino-acid identity in the C-termini of these proteins (S6B Fig). Since these other flatworms also possess vitellaria, and the evolution of vitellaria is a relatively recent innovation in flatworm biology [4,49], it is possible that during vitellaria evolution, these VF1 proteins adapted to being activated by a noncanonical ligand. In addition to their ability to bind ligands, NRs are notorious for their propensity to bind DNA as either homo- or heterodimers [41]. Thus, VF1 may lack ligand-binding activity but retain the ability to heterodimerize with other ligand-activated NRs. One set of potential heterodimerization partners for VF1 are the schistosome retinoid X receptor (RXR) NRs. Indeed, RXR proteins heterodimerize with a variety of NRs [41], and the two schistosome RXR proteins are known to bind the promoters of genes encoding eggshell proteins in the vitellaria [50,51]. Thus, there is the possibility these NRs collaborate to coordinate pro-vitellogenic cell fates.

What role might VF1 play in male-induced female maturation? Clearly, VF1 is essential for vitelline cell development following pairing with a male worm. However, we did not detect *vfl* expression in the ovary, and our RNAi experiments suggest that oogenesis is not affected in *vfl*(RNAi) parasites. Thus, VF1 is not likely to be a global regulator in the female response to pairing. A more likely scenario is that VF1 is activated by pairing, resulting in transcriptional changes important to vitellogenesis in the primordial vitellaria. Based on this model, we would also speculate there are ovary-specific transcriptional regulators that are activated upon pairing within the primordial ovary. Capitalizing on ABC169 media and modern molecular approaches, future studies should be aimed at uncovering the general upstream signaling programs that activate factors, such as VF1, in the primordial reproductive organs.

During his extensive studies to develop in vitro culture conditions for *S. mansoni*, Paul Basch lamented that the production of viable eggs in vitro “remains a formidable challenge” [22]. We find three additions to Basch’s base medium formulation (ascorbic acid, blood cells, and LDL) can sustain the production of viable eggs for several weeks in vitro. Although ABC169 does not fully replicate the in vivo reproductive potential of the parasite, it allows us to recapitulate important aspects of schistosome sexual biology in vitro and thus represents a significant improvement over existing culture methods. Taken together, the ability to sustain sexual maturity in vitro, coupled with a growing understanding of the molecular programs associated with distinct reproductive states [52,53] and tools such as RNAi, will expedite our understanding of the molecular factors governing parasite sexual development and egg production, perhaps suggesting new therapeutic opportunities.

Materials and methods

Parasites and in vitro maintenance

Adult *S. mansoni* (NMRI strain) (6–7 weeks postinfection) or adult *S. japonicum* (Philippine strain) (28 days postinfection) were recovered from infected mice by perfusion through the hepatic portal vein with 37°C DMEM (Mediatech, Manassas, VA, USA) plus 5% serum and heparin (200–350 U/ml). Single-sex infections of *S. mansoni* were obtained by infecting mice with male or female cercariae recovered from NMRI *B. glabrata* snails infected with single miracidia. Following recovery from the host, worms were rinsed several times in DMEM + 5% serum before placing into culture media. The base medium for these studies was BM169 [21] with the addition of 1× Antibiotic–Antimycotic (Gibco/Life Technologies, Carlsbad, CA, USA). Although Basch included RBCs in BM169, it has been noted that erythrocytes, which schistosomes consume in vivo, are not sufficient to sustain egg production [16,22,27] and were initially omitted from the base medium. We explored sera from a variety of sources (horse,

fetal bovine, chicken) and determined that newborn calf serum (Sigma-Aldrich, St. Louis, MO, USA) both performed well and was cost efficient. For ABC169, BM169 was supplemented with 200 μ M ascorbic acid (Sigma-Aldrich), 0.2% V/V bovine washed RBCs (10% suspension; Lampire Biological Laboratories, Pipersville, PA, USA), and 0.2% V/V porcine cholesterol concentrate (Rocky Mountain Biologicals, Missoula, MT, USA). Ascorbic acid was added from a 500 mM stock dissolved in BM169 that was stored at 4°C in the dark for less than 2 weeks. For regular maintenance, 4–6 worm pairs were cultured at 37°C in 5% CO₂ in 3 ml medium in a 12-well plate; the medium was changed every other day. To count egg-laying rates, individual worm pairs were maintained in 24-well plates in 1 ml of medium, and eggs were removed for counting every 24 h during a medium change. Worms that separated or became ill during cultivation were excluded from analysis.

Molecular biology

For quantification of gene expression, RNA was reverse transcribed (iScript; Bio-Rad, Hercules, CA, USA), and quantitative PCR was performed using an Applied Biosystems Quantstudio3 instrument and PowerUp SYBR Green Master mix (Thermo Fisher, Carlsbad, CA, USA). Gene expression was normalized to the expression of a proteasome subunit (Smp_056500), and relative gene expression values and statistical analyses were performed using the Quantstudio Design and Analysis software (Thermo Fisher). The heatmap depicting relative gene expression was generated using R. Oligonucleotide sequences are listed in [S1 Table](#).

Parasite labeling and imaging

Whole-mount in situ hybridization was performed as previously described [26,54]. ImageJ was used to quantify egg size, autofluorescence, and number of nuclei from images of eggs acquired on a Nikon A1+ laser scanning confocal microscope (Nikon, Tokyo, Japan). Like previously described diazo salts [55,56], Fast Blue BB strongly labeled the polyphenol-rich vitelline droplets of mature vitellocytes and could be visualized by bright-field microscopy as a deep red stain. Fast Blue BB could also be visualized by confocal microscopy by excitation with a 561-nm laser. For Fast Blue BB staining, female worms were separated from males using 0.25% tricaine in BM169 and fixed for 4 h in 4% formaldehyde in PBS + 0.3% Triton X-100 (PBSTx). Parasites were washed in PBSTx for 10 min, stained in freshly made filtered 1% Fast Blue BB in PBSTx for 5 min, and rinsed in PBSTx 3 times. Worms were incubated with 1 μ g/ml DAPI in PBSTx for 2 h, cleared in 80% glycerol in PBS, and mounted on slides. For Fast Blue BB/BODIPY 493/503 staining, parasites were processed similarly except detergents were omitted from all buffers; parasites were labeled with 1 μ g/ml BODIPY 493/503 (Thermo Fisher) in PBS for 1 h following Fast Blue BB staining. For EdU labeling, eggs within 24–48 h of being laid were incubated in Medium 199 (M199; Corning, Corning, NY, USA) supplemented with 10 μ M EdU and incubated overnight. The following day, the eggs were collected by centrifugation at 10,000 \times g for 1 min and fixed in 4% formaldehyde in PBSTx for 4 h, EdU was detected as previously described [54], and eggs were washed in PBSTx. In situ hybridizations and colorimetric detection of Fast Blue BB were imaged using a Zeiss AxioZoom V16 (Zeiss, Oberkochen, Germany) equipped with a transmitted light base and a Zeiss AxioCam 105 Color camera. All other images were acquired using a Nikon A1+ laser scanning confocal microscope.

Egg culture, miracidia hatching, and labeling

Eggs were collected on a 10- μ m cell strainer rinsed into M199 (Corning) containing 10% fetal bovine serum (FBS) and 1 \times Antibiotic–Antimycotic (Gibco/Life Technologies) for 7 days at

37°C in 5% CO₂. After culture, eggs were collected on a 10-µm cell strainer, rinsed with artificial pond water 1–2 times, and placed in artificial pond water under light. A small aliquot of eggs was counted to determine the total number of eggs examined. Active miracidia were observed and counted under light microscopy every 30 min for up to 4 h. Miracidia fixation and labeling was performed as previously described [57].

Karyotype analysis

Karyotypes from schistosome embryos were determined using a modified version of a previously published method [58]. Briefly, eggs were incubated in M199 for two days after deposition and then incubated in 5 µM nocodazole for 1 h at 37°C. Eggs were pelleted at 20,000 × g for 1 min, rinsed in DI water, pelleted, resuspended in 1 ml of water, and incubated for 20 min at RT. Following centrifugation, the pelleted eggs were resuspended in 1 ml of fixative (3:1 methanol:acetic acid) for 15 min. Eggs were again pelleted and resuspended in 100 µl of fixative, and the eggshells were disrupted using a Kontes pellet pestle (DWK Life Sciences, Rockwood, TN, USA). The disrupted eggshells were allowed to settle for 10 min, and the supernatant was collected and centrifuged for 8 min at 240 × g. All but approximately 20 µl of supernatant was removed, and the remaining liquid was pipetted dropwise on to a glass slide (Superfrost Plus; Thermo Fisher) freshly dipped in PBS. After air-drying, chromosomes were labeled with Vectashield containing DAPI (Vector Laboratories, Burlingame, CA, USA) and imaged on a Nikon A1+ laser scanning confocal microscope with a 60×/1.4 NA objective.

RNAi

Double-stranded RNA (dsRNA) was generated as previously described [54,59]. For RNAi treatment, 12 freshly perfused immature female *S. mansoni* from single-sex infections were soaked in 1 ml BM169 supplemented with 1% FBS containing 60 µg/ml of dsRNA for 24 h. The following day (D1), three virgin RNAi-treated female worms were cocultured with 3 adult male worms in 3 mL ABC169 media with 10% FBS supplemented with 60 µg/ml of dsRNA. The medium and dsRNA were replaced on D2. After that, medium was replaced every other day, and fresh dsRNA was added on D6 and D10. At D4, unpaired female worms were discarded. At D14, parasites were either harvested for Fast Blue BB staining or pulsed for 4 h with EdU, fixed, and then processed for EdU labeling as previously described [54]. For EdU detection, formaldehyde-fixed parasites were treated with proteinase K and postfixed in 4% formaldehyde, and EdU was detected with 10 µM Azide Fluor 545 (Sigma-Aldrich). Eggs laid between D12 and D14 were collected to determine egg-laying rates.

Supporting information

S1 Fig. Reproductive changes of paired adult female parasites during in vitro culture. Ovaries of females in (A) BM169 or (B) ABC169 between D0 to D20 of in vitro culture labeled with DAPI. Differentiated oocytes are present in the posterior regions (right) of ovaries during in vitro culture regardless of culture condition. (C) Fast Blue BB labeling showing the maintenance of mature vitellocytes during culture in BM169. Representative images from 3 biological replicates with $n > 10$ parasites. Scale bars: 100 µm. ABC169, Ascorbic Acid, Blood Cells, Cholesterol, and BM169; BM169, Basch's medium 169; D, day. (TIF)

S2 Fig. ABC169 supports long-term in vitro egg-laying in *S. mansoni*. (A) Fast Blue BB labeling of paired adult female *S. mansoni* in BM169 or ABC169 at D30 of culture. Representative images from 3 separate experiments with $n > 197$ parasites. (B) EdU-labeled embryonic

cells from eggs laid between D28 and D30 by paired adult females in BM169 or ABC169. Eggs laid by worms cultured in ABC169 appear normal in morphology, while those from BM169 were tiny and deformed. Representative images from 3 separate experiments; *n*-values indicate fraction of eggs that contain EdU⁺ proliferative embryonic cells. Scale bars: A, B, 100 μm. ABC169, Ascorbic Acid, Blood Cells, Cholesterol, and BM169; BM169, Basch's medium 169; D, day; EdU, 5-ethynyl-2'-deoxyuridine.

(TIF)

S3 Fig. Hatching ratio of eggs laid on different days by worm pairs cultured in BM169 or ABC169. Data points represent mean values from 4 independent experiments. Error bars represent 95% confidence intervals. Underlying primary data can be found in [S1 Data](#). ABC169, Ascorbic Acid, Blood Cells, Cholesterol, and BM169; BM169, Basch's medium 169

(TIF)

S4 Fig. ABC169 supports the maintenance of *S. japonicum* vitellaria. (A) Vitellaria visualized by Fast Blue BB staining in paired adult female *S. japonicum* in freshly perfused parasites ("Fresh") or BM169/ABC169 at D15 of culture. Representative images from 3 separate experiments. (B) Morphology of eggs laid by freshly perfused female worms on first two days or paired adult female *S. japonicum* in BM169 or ABC169 on D15. Representative of 3 experiments. (C–D) Quantification of the (C) size, (D) number of DAPI-labeled nuclei from eggs laid by freshly perfused female worms (Fresh, *n* = 31 eggs) or laid by parasites cultured in BM169 (*n* = 31 eggs) or ABC169 (*n* = 33 eggs) on D15. *****p* < 0.0001, *t* test. Error bars represent 95% confidence intervals. Underlying primary data for panels C–D can be found in [S1 Data](#). Scale bars: A, B, 100 μm. ABC169, Ascorbic Acid, Blood Cells, Cholesterol, and BM169; BM169, Basch's medium 169; D, day.

(TIF)

S5 Fig. Karyotype analysis on eggs. Plot showing number of chromosomes from karyotypes obtained from eggs laid by freshly perfused worm pairs on D1 of culture ("D1 Fresh eggs," blue) or females paired with decapitated and castrated male segments ("unfertilized eggs," red). Underlying primary data can be found in [S1 Data](#). D, day.

(TIF)

S6 Fig. The protein alignment of Smp_248100 and the most similar proteins from other organisms. (A) Sequence alignment showing Smp_248100 shares a conserved DBD with other vertebrate and invertebrate NRs. Unlike the nonparasitic groups, parasitic flatworms shared a conserved histidine residue (indicated in yellow) in the position of the second conserved cysteine (indicated in red) in the second zinc finger. (B) Full-length alignment showing C-terminus of Smp_248100 shares stretches of high amino-acid identity with orthologous proteins from other parasitic flatworms. Cel DAF-12, *Caenorhabditis elegans* nuclear hormone receptor family member *daf-12* (NP_001041239); Csi, *Clonorchis sinensis* (csin106676); DBD, DNA-binding domain; Dme HR96, *Drosophila melanogaster* hormone receptor-like in 96 (NP_524493); Emu, *Echinococcus multilocularis* (EmuJ_001078800.1); Human GCR, Human glucocorticoid receptor (P04150); Human SF1, Human steroidogenic factor 1 (Q13285); NR, nuclear receptor; Ovi, *Opisthorchis viverrini* (T265_09674); Sman, *Schistosoma mansoni* (Smp_248100); Smed HR96, *Schmidtea mediterranea* (dd_Smed_v6_14067_0_3); Tso, *Taenia solium* (TsM_000102500)

(TIF)

S7 Fig. Fast Blue BB staining of the RNAi-treated worms at D14. Plot showing percentage of Fast Blue BB positive labeling in *Smp_248100* (RNAi) versus control (RNAi). Representative

images from $n > 39$ parasites for each treatment examined in 4 separate experiments. **** $p < 0.0001$, t test. Error bars represent 95% confidence intervals. Underlying primary data can be found in [S1 Data](#). D, day; RNAi, RNA interference.

(TIF)

S1 Table. Summary of oligonucleotide sequences.

(XLSX)

S1 Data. Summary of all primary data.

(XLSX)

S1 Movie. Viable miracidium enclosed in an egg laid at D20 by an in vitro-cultured adult parasite. D, day.

(MOV)

S2 Movie. Hatched miracidia from eggs laid at D20 by in vitro-cultured adult parasites. D, day.

(MOV)

S3 Movie. Viable cercariae shed from snails infected with miracidia hatched from eggs laid between D15–20 by in vitro-cultured parasites. D, day.

(MOV)

S4 Movie. An immature female worm paired with an amputated male posterior segment.

(MOV)

Acknowledgments

We dedicate this manuscript to the memory of Paul Basch. We thank Melanie Cobb, Michael Reese, and members of the Collins laboratory for comments on the manuscript. Mice and *B. glabrata* snails were provided by the National Institute of Allergy and Infectious Diseases (NIAID) Schistosomiasis Resource Center of the Biomedical Research Institute (Rockville, MD, USA) through National Institutes of Health (NIH)-NIAID Contract HHSN272201000051 for distribution through BEI Resources.

Author Contributions

Conceptualization: Jipeng Wang, Rui Chen, James J. Collins III.

Data curation: Jipeng Wang, Rui Chen.

Formal analysis: Jipeng Wang, Rui Chen, James J. Collins III.

Funding acquisition: James J. Collins III.

Investigation: Jipeng Wang, Rui Chen.

Supervision: James J. Collins III.

Writing – original draft: Jipeng Wang, James J. Collins III.

Writing – review & editing: Jipeng Wang, Rui Chen, James J. Collins III.

References

1. Hotez PJ, Fenwick A. Schistosomiasis in Africa: an emerging tragedy in our new global health decade. *PLoS Negl Trop Dis*. 2009; 3(9):e485. <https://doi.org/10.1371/journal.pntd.0000485> PMID: 19787054; PubMed Central PMCID: PMC2746322.

2. Basch PF. Schistosomes: Development, Reproduction, and Host Relations. New York: Oxford University Press; 1991. 248 p.
3. Pearce EJ, MacDonald AS. The immunobiology of schistosomiasis. *Nat Rev Immunol.* 2002; 2(7):499–511. <https://doi.org/10.1038/nri843> PMID: 12094224.
4. Collins JJ 3rd. Platyhelminthes. *Curr Biol.* 2017; 27(7):R252–R6. <https://doi.org/10.1016/j.cub.2017.02.016> PMID: 28376328.
5. Grevelding CG. *Schistosoma*. *Curr Biol.* 2004; 14(14):R545. <https://doi.org/10.1016/j.cub.2004.07.006> PMID: 15268869.
6. Severinghaus AE. Sex Studies on *Schistosoma japonicum*. *Quarterly Journal of Microscopical Science.* 1928; 71:653–702.
7. LoVerde PT. Sex and schistosomes: an interesting biological interplay with control implications. *J Parasitol.* 2002; 88(1):3–13. [https://doi.org/10.1645/0022-3395\(2002\)088\[0003:PASASA\]2.0.CO;2](https://doi.org/10.1645/0022-3395(2002)088[0003:PASASA]2.0.CO;2) PMID: 12053976.
8. Wendt GR, Collins JJ 3rd. Schistosomiasis as a disease of stem cells. *Curr Opin Genet Dev.* 2016; 40:95–102. <https://doi.org/10.1016/j.gde.2016.06.010> PMID: 27392295; PubMed Central PMCID: PMC5135665.
9. Clough ER. Morphology and reproductive organs and oogenesis in bisexual and unisexual transplants of mature *Schistosoma mansoni* females. *J Parasitol.* 1981; 67(4):535–9. Epub 1981/08/01. PMID: 7264839.
10. LoVerde PT, Andrade LF, Oliveira G. Signal transduction regulates schistosome reproductive biology. *Curr Opin Microbiol.* 2009; 12(4):422–8. Epub 2009/07/07. S1369-5274(09)00082-4 [pii] <https://doi.org/10.1016/j.mib.2009.06.005> PMID: 19577949; PubMed Central PMCID: PMC2740793.
11. Beckmann S, Quack T, Burmeister C, Buro C, Long T, Dissous C, et al. *Schistosoma mansoni*: signal transduction processes during the development of the reproductive organs. *Parasitology.* 2010; 137(3):497–520. Epub 2010/02/19. S0031182010000053 [pii] <https://doi.org/10.1017/S0031182010000053> PMID: 20163751.
12. Grevelding CG, Langner S, Dissous C. Kinases: Molecular Stage Directors for Schistosome Development and Differentiation. *Trends Parasitol.* 2018; 34(3):246–60. Epub 2017/12/26. <https://doi.org/10.1016/j.pt.2017.12.001> PMID: 29276074.
13. Michaels RM, Prata A. Evolution and characteristics of *Schistosoma mansoni* eggs laid *in vitro*. *J Parasitol.* 1968; 54(5):921–30. PMID: 5761119.
14. Irie Y, Tanaka M, Yasuraoka K. Degenerative changes in the reproductive organs of female schistosomes during maintenance *in vitro*. *J Parasitol.* 1987; 73(4):829–35. PMID: 3625433.
15. Basch PF, Humbert R. Cultivation of *Schistosoma mansoni in vitro*. III. implantation of cultured worms into mouse mesenteric veins. *J Parasitol.* 1981; 67(2):191–5. PMID: 7241279.
16. Galanti SE, Huang SC, Pearce EJ. Cell death and reproductive regression in female *Schistosoma mansoni*. *PLoS Negl Trop Dis.* 2012; 6(2):e1509. <https://doi.org/10.1371/journal.pntd.0001509> PMID: 22363825; PubMed Central PMCID: PMC3283563.
17. Senft AW, Weller TH. Growth and regeneration of *Schistosoma mansoni in vitro*. *Proc Soc Exp Biol Med.* 1956; 93(1):16–9. PMID: 13370563.
18. Cheever AW, Weller TH. Observations on the growth and nutritional requirements of *Schistosoma mansoni in vitro*. *Am J Hyg.* 1958; 68(3):322–39. PMID: 13594932.
19. Robinson DL. Egg-laying by *Schistosoma mansoni in vitro*. *Ann Trop Med Parasitol.* 1960; 54:112–7. PMID: 14437934.
20. Clegg JA. *in vitro* Cultivation of *Schistosoma mansoni*. *Exp Parasitol.* 1965; 16:133–47. PMID: 14281210.
21. Basch PF. Cultivation of *Schistosoma mansoni in vitro*. I. Establishment of cultures from cercariae and development until pairing. *J Parasitol.* 1981; 67(2):179–85. Epub 1981/04/01. PMID: 7241277.
22. Basch PF. Cultivation of *Schistosoma mansoni in vitro*. II. production of infertile eggs by worm pairs cultured from cercariae. *J Parasitol.* 1981; 67(2):186–90. PMID: 7241278.
23. Ashton PD, Harrop R, Shah B, Wilson RA. The schistosome egg: development and secretions. *Parasitology.* 2001; 122(Pt 3):329–38. PMID: 11289069.
24. Erasmus DA. *Schistosoma mansoni*: development of the vitelline cell, its role in drug sequestration, and changes induced by Astiban. *Exp Parasitol.* 1975; 38(2):240–56. PMID: 1175727.
25. Smyth JD, Clegg JA. Egg-shell formation in trematodes and cestodes. *Exp Parasitol.* 1959; 8(3):286–323. PMID: 13663910.
26. Wang J, Collins JJ 3rd. Identification of new markers for the *Schistosoma mansoni* vitelline lineage. *Int J Parasitol.* 2016; 46(7):405–10. <https://doi.org/10.1016/j.ijpara.2016.03.004> PMID: 27056273

27. Huang SC, Freitas TC, Amiel E, Everts B, Pearce EL, Lok JB, et al. Fatty acid oxidation is essential for egg production by the parasitic flatworm *Schistosoma mansoni*. *PLoS Pathog*. 2012; 8(10):e1002996. <https://doi.org/10.1371/journal.ppat.1002996> PMID: 23133378; PubMed Central PMCID: PMC3486914.
28. Meyer F, Meyer H, Bueding E. Lipid metabolism in the parasitic and free-living flatworms, *Schistosoma mansoni* and *Dugesia dorotocephala*. *Biochim Biophys Acta*. 1970; 210(2):257–66. PMID: 4319989.
29. Berriman M, Haas BJ, LoVerde PT, Wilson RA, Dillon GP, Cerqueira GC, et al. The genome of the blood fluke *Schistosoma mansoni*. *Nature*. 2009; 460(7253):352–8. Epub 2009/07/17. [nature08160](https://doi.org/10.1038/nature08160) [pii] <https://doi.org/10.1038/nature08160> PMID: 19606141.
30. Michael AJ. Polyamines in Eukaryotes, Bacteria, and Archaea. *J Biol Chem*. 2016; 291(29):14896–903. <https://doi.org/10.1074/jbc.R116.734780> PMID: 27268252; PubMed Central PMCID: PMC4946907.
31. Krakower C, Hoffman WA, Axtmayer JH. Defective granular eggshell formation by *Schistosoma mansoni* in experimentally infected guinea pigs on a vitamin C deficient diet. *The Journal of Infectious Diseases*. 1944; 74(3):178–83. <https://doi.org/10.1093/infdis/74.3.178>
32. Arrigoni O, De Tullio MC. Ascorbic acid: much more than just an antioxidant. *Biochim Biophys Acta*. 2002; 1569(1–3):1–9. PMID: 11853951.
33. Goldman HM, Gould BS, Munro HN. The antiscorbutic action of L-ascorbic acid and D-isoascorbic acid (erythorbic acid) in the guinea pig. *Am J Clin Nutr*. 1981; 34(1):24–33. <https://doi.org/10.1093/ajcn/34.1.24> PMID: 7446456.
34. Shaw JR. *Schistosoma mansoni*: pairing in vitro and development of females from single sex infections. *Exp Parasitol*. 1977; 41(1):54–65. PMID: 838033.
35. Popiel I, Basch PF. Reproductive development of female *Schistosoma mansoni* (Digenea: Schistosomatidae) following bisexual pairing of worms and worm segments. *J Exp Zool*. 1984; 232(1):141–50. <https://doi.org/10.1002/jez.1402320117> PMID: 6502090.
36. Ribeiro-Paes JT, Rodrigues V. Sex determination and female reproductive development in the genus *Schistosoma*: a review. *Rev Inst Med Trop Sao Paulo*. 1997; 39(6):337–44. PMID: 9674285.
37. Popiel I. Male-stimulated female maturation in *Schistosoma*: A review. *J Chem Ecol*. 1986; 12(8):1745–54. <https://doi.org/10.1007/BF01022380> PMID: 24305892.
38. Kunz W. Schistosome male-female interaction: induction of germ-cell differentiation. *Trends Parasitol*. 2001; 17(5):227–31. Epub 2001/04/27. S1471-4922(01)01893-1 [pii]. PMID: 11323306.
39. Basch PF, Basch N. Intergeneric reproductive stimulation and parthenogenesis in *Schistosoma mansoni*. *Parasitology*. 1984; 89 (Pt 2):369–76. PMID: 6504564.
40. Tchuente LA, Imbert-Establet D, Southgate VR, Jourdane J. Interspecific stimulation of parthenogenesis in *Schistosoma intercalatum* and *S. mansoni*. *J Helminthol*. 1994; 68(2):167–73. Epub 1994/06/01. PMID: 7930460.
41. Mangelsdorf DJ, Thummel C, Beato M, Herrlich P, Schutz G, Umesono K, et al. The nuclear receptor superfamily: the second decade. *Cell*. 1995; 83(6):835–9. PMID: 8521507.
42. Eshete F, LoVerde PT. Characteristics of phenol oxidase of *Schistosoma mansoni* and its functional implications in eggshell synthesis. *J Parasitol*. 1993; 79(3):309–17. PMID: 8501588.
43. Fitzpatrick JM, Hirai Y, Hirai H, Hoffmann KF. Schistosome egg production is dependent upon the activities of two developmentally regulated tyrosinases. *FASEB J*. 2007; 21(3):823–35. <https://doi.org/10.1096/fj.06-7314com> PMID: 17167065.
44. Ramsden CA, Riley PA. Tyrosinase: the four oxidation states of the active site and their relevance to enzymatic activation, oxidation and inactivation. *Bioorg Med Chem*. 2014; 22(8):2388–95. <https://doi.org/10.1016/j.bmc.2014.02.048> PMID: 24656803.
45. Imbert-Establet D, Xia M, Jourdane J. Parthenogenesis in the genus *Schistosoma*: electrophoretic evidence for this reproduction system in *S. japonicum* and *S. mansoni*. *Parasitol Res*. 1994; 80(3):186–91. Epub 1994/01/01. PMID: 8036230.
46. Southgate VR, Jourdane J, Tchuente LA. Recent studies on the reproductive biology of the schistosomes and their relevance to speciation in the Digenea. *Int J Parasitol*. 1998; 28(8):1159–72. Epub 1998/10/08. PMID: 9762560.
47. Catalano S, Sene M, Diouf ND, Fall CB, Borlase A, Leger E, et al. Rodents as Natural Hosts of Zoonotic *Schistosoma* Species and Hybrids: An Epidemiological and Evolutionary Perspective From West Africa. *J Infect Dis*. 2018; 218(3):429–33. Epub 2018/01/25. <https://doi.org/10.1093/infdis/jiy029> PMID: 29365139.
48. Couse JF, Korach KS. Exploring the role of sex steroids through studies of receptor deficient mice. *J Mol Med (Berl)*. 1998; 76(7):497–511. Epub 1998/07/11. PMID: 9660168.

49. Hyman L. The Invertebrates: Platyhelminthes and Rhynchocoela The Acoelomate Bilateria. New York: McGraw-Hill Book Company, Inc.; 1951. 550 p.
50. Fantappie MR, Freebern WJ, Osman A, LaDuca J, Niles EG, LoVerde PT. Evaluation of *Schistosoma mansoni* retinoid X receptor (SmRXR1 and SmRXR2) activity and tissue distribution. *Mol Biochem Parasitol.* 2001; 115(1):87–99. Epub 2001/05/30. PMID: [11377743](#).
51. Freebern WJ, Osman A, Niles EG, Christen L, LoVerde PT. Identification of a cDNA encoding a retinoid X receptor homologue from *Schistosoma mansoni*. Evidence for a role in female-specific gene expression. *J Biol Chem.* 1999; 274(8):4577–85. Epub 1999/02/13. PMID: [9988692](#).
52. Lu Z, Sessler F, Holroyd N, Hahnel S, Quack T, Berriman M, et al. A gene expression atlas of adult *Schistosoma mansoni* and their gonads. *Sci Data.* 2017; 4:170118. <https://doi.org/10.1038/sdata.2017.118> PMID: [28829433](#); PubMed Central PMCID: PMC5566097.
53. Lu Z, Sessler F, Holroyd N, Hahnel S, Quack T, Berriman M, et al. Schistosome sex matters: a deep view into gonad-specific and pairing-dependent transcriptomes reveals a complex gender interplay. *Sci Rep.* 2016; 6:31150. <https://doi.org/10.1038/srep31150> PMID: [27499125](#); PubMed Central PMCID: PMC4976352.
54. Collins JJ III, Wang B, Lambrus BG, Tharp ME, Iyer H, Newmark PA. Adult somatic stem cells in the human parasite *Schistosoma mansoni*. *Nature.* 2013; 494(7438):476–9. <https://doi.org/10.1038/nature11924> PMID: [23426263](#); PubMed Central PMCID: PMC3586782.
55. Johri LN, Smyth JD. A histochemical approach to the study of helminth morphology. *Parasitology.* 1956; 46(1–2):107–16. PMID: [13322460](#).
56. Wang J, Wang S, Liu X, Xu B, Chai R, Zhou P, et al. Intake of Erythrocytes Required for Reproductive Development of Female *Schistosoma japonicum*. *PLoS ONE.* 2015; 10(5):e0126822. <https://doi.org/10.1371/journal.pone.0126822> PMID: [25978643](#); PubMed Central PMCID: PMC4433235.
57. Collins JJ III, King RS, Cogswell A, Williams DL, Newmark PA. An atlas for *Schistosoma mansoni* organs and life-cycle stages using cell type-specific markers and confocal microscopy. *PLoS Negl Trop Dis.* 2011; 5(3):e1009. <https://doi.org/10.1371/journal.pntd.0001009> PMID: [21408085](#); PubMed Central PMCID: PMC3050934.
58. Short RB, Grossman AI. Conventional giemsa and C-banded karyotypes of *Schistosoma mansoni* and *S. rodhaini*. *J Parasitol.* 1981; 67(5):661–71. PMID: [7299577](#).
59. Collins JJ III, Hou X, Romanova EV, Lambrus BG, Miller CM, Saberi A, et al. Genome-Wide Analyses Reveal a Role for Peptide Hormones in Planarian Germline Development. *PLoS Biol.* 2010; 8(10):e1000509. <https://doi.org/10.1371/journal.pbio.1000509> PMID: [20967238](#)