



RESEARCH

Open Access

# Development of a syngeneic mouse model of epithelial ovarian cancer

Bridget A Quinn<sup>1,5</sup>, Fang Xiao<sup>1</sup>, Laura Bickel<sup>1</sup>, Lainie Martin<sup>1</sup>, Xiang Hua<sup>2</sup>, Andres Klein-Szanto<sup>3,4</sup>, Denise C Connolly<sup>1\*</sup>

## Abstract

**Background:** Most cases of ovarian cancer are epithelial in origin and diagnosed at advanced stage when the cancer is widely disseminated in the peritoneal cavity. The objective of this study was to establish an immunocompetent syngeneic mouse model of disseminated epithelial ovarian cancer (EOC) to facilitate laboratory-based studies of ovarian tumor biology and preclinical therapeutic strategies.

**Methods:** Individual lines of TgMISIIR-TAg transgenic mice were phenotypically characterized and backcrossed to inbred C57BL/6 mice. In addition to a previously described line of EOC-prone mice, two lines (TgMISIIR-TAg-Low) were isolated that express the oncogenic transgene, but have little or no susceptibility to tumor development. Independent murine ovarian carcinoma (MOVCAR) cell lines were established from the ascites of tumor-bearing C57BL/6 TgMISIIR-TAg transgenic mice, characterized and tested for engraftment in the following recipient mice: 1) severe immunocompromised immunodeficient (SCID), 2) wild type C57BL/6, 3) oophorectomized tumor-prone C57BL/6 TgMISIIR-TAg transgenic and 4) non-tumor prone C57BL/6 TgMISIIR-TAg-Low transgenic. Lastly, MOVCAR cells transduced with a luciferase reporter were implanted in TgMISIIR-TAg-Low mice and *in vivo* tumor growth monitored by non-invasive optical imaging.

**Results:** Engraftment of MOVCAR cells by i.p. injection resulted in the development of disseminated peritoneal carcinomatosis in SCID, but not wild type C57BL/6 mice. Oophorectomized tumor-prone TgMISIIR-TAg mice developed peritoneal carcinomas with high frequency, rendering them unsuitable as allograft recipients. Orthotopic or pseudo-orthotopic implantation of MOVCAR cells in TgMISIIR-TAg-Low mice resulted in the development of disseminated peritoneal tumors, frequently accompanied by the production of malignant ascites. Tumors arising in the engrafted mice bore histopathological resemblance to human high-grade serous EOC and exhibited a similar pattern of peritoneal disease spread.

**Conclusions:** A syngeneic mouse model of human EOC was created by pseudo-orthotopic and orthotopic implantation of MOVCAR cells in a susceptible inbred transgenic host. This immunocompetent syngeneic mouse model presents a flexible system that can be used to study the consequences of altered gene expression (e.g., by ectopic expression or RNA interference strategies) in an established MOVCAR tumor cell line within the ovarian tumor microenvironment and for the development and analysis of preclinical therapeutic agents including EOC vaccines and immunotherapeutic agents.

## Background

Ovarian cancer is the most common cause of death from gynecologic malignancies and the fifth most common cause of cancer death in women in the United States [1]. Ovarian adenocarcinomas account for 85-90%

of all cancers of the ovary. The initiating cell population for EOC remains to be exactly defined, with different evidence suggesting tumors originate from the ovarian surface epithelium (OSE), inclusion cysts lined by OSE [2-5] or alternatively, the fallopian tube epithelium [6] or components of the secondary Müllerian system, including the epithelial cells of the *rete ovarii*, paraovarian/paratubal cysts, endosalpingiosis, endometriosis or endometriosis [7]. The lack of clarity regarding tumor

\* Correspondence: Denise.Connolly@fcc.edu

<sup>1</sup>Women's Cancer Program, Fox Chase Cancer Center, 333 Cottman Avenue, Philadelphia, PA 19111-2497, USA

Full list of author information is available at the end of the article

origin stems from the fact that unlike epithelial cancers arising in other organs, a well-defined disease spectrum consisting of benign, invasive and metastatic lesions has not been identified for EOC. This is due at least in part to that fact that the majority of cases are identified at advanced stage when disease has spread beyond the ovary. Another reason is the morphologic complexity of common EOCs which consist of several distinct histologic subtypes; these include serous, endometrioid, mucinous and clear cell cancers.

Progress in ovarian cancer research has been slowed by the lack of suitable animal models that exhibit features of human disease. Genetically manipulable mammalian models of spontaneous ovarian cancer are rare, particularly those representing ovarian adenocarcinomas. Human and rodent models of spontaneous *ex vivo* transformation of OSE have been described [8-10]. One of these models, a syngeneic mouse model of EOC [10], has been extensively used for preclinical studies of therapeutic agents and studies of the tumor microenvironment [11-18]. Early attempts to produce murine EOC models using transgenic or other genetic engineering approaches resulted in the development of granulosa cell tumors [19-24]. More recently, a number of laboratories have developed genetically engineered mouse (GEM) models of EOC by using *ex vivo* transformation [25,26], transgenic [27,28] and conditional gene expression strategies [29-31]. To date, due to the lack of a suitable GEM model expressing Cre-recombinase, the strategy most frequently employed for conditional gene expression in the ovarian epithelium involves survival surgery for intrabursal injection of recombinant Adenovirus-Cre [29-34].

Recently, our group developed a spontaneous transgenic mouse model of EOC by expressing the oncogenic early region of SV40 under the transcriptional control of the Müllerian inhibiting substance type II receptor gene promoter [27,28]. Although SV40 TAG expression is not directly associated with the development of human cancer, its expression results in functional inactivation of the critical tumor suppressors p53 and Rb. Mutation of *TP53* is, by far, the most common genetic alteration observed in EOC, particularly the serous subtype [35,36]. Direct mutation or loss of *Rb* or its downstream signaling mediators are also common in EOCs [37-41]. Via binding and inhibition of PP2A, SV40 tag also results in activation of PI3K/AKT and mitogen activated protein kinase (MAPK) signaling [42], pathways frequently activated in human EOC [43]. A stable transgenic line of TgMISIIR-TAG mice was established in which female mice develop bilateral ovarian carcinoma with 100% penetrance [28]. To date, this is the only GEM model that develops spontaneous EOC with pathological features of serous EOC that does not

require extensive surgical manipulation to induce the phenotype. Like human EOC, female TgMISIIR-TAG mice with significant tumor burden exhibit no apparent symptoms of illness and disease dissemination is typically restricted to the peritoneum [27,28]. Murine ovarian carcinoma (MOVCAR) cell lines isolated from the ascites and primary tumors of these mice share many molecular features with human tumors [27,28,44-48] and are well suited to experimental analysis *in vitro*. With these reagents, the expression levels of specific genes can be experimentally manipulated and properties of MOVCAR cell lines can be assessed *in vitro*. However, the lack of a syngeneic recipient for manipulated MOVCAR cells has limited the analysis of the *in vivo* effects of genetic alterations in the model to studies in immunodeficient mice. The present study describes the identification of non-tumor prone lines of TgMISIIR-TAG transgenic mice that can be used as syngeneic recipients for MOVCAR cell allografts. The availability of this syngeneic model affords the opportunity to study the *in vivo* effects of genetic alterations on tumor properties and on interactions between tumor cells and their microenvironment in an immunocompetent host. Moreover, this immunocompetent mouse model of EOC is suitable for studies of immune-based therapeutic strategies and vaccine development.

## Methods

### Transgenic mice and backcrosses

All procedures involving mice were approved by the Fox Chase Cancer Center (FCCC) Institutional Animal Care and Use Committee (IACUC) and all mice were maintained under specific pathogen free conditions. Individual transgenic TgMISIIR-TAG founder mice were generated in the FCCC Transgenic Facility in a first generation hybrid genetic background of C57BL/6 and C3H (B6C3F1) and genotyped by PCR amplification as previously described [27]. Transgenic founders were crossed with wild type C57BL/6 mice (obtained from the FCCC Laboratory Animal Facility) to establish breeding lines. Relevant lines of EOC-prone and non-tumor-prone TgMISIIR-TAG mice were maintained as hemizygotes and backcrossed for a minimum of ten generations to wild type C57BL/6 mice to generate genetically pure lines of C57BL/6 TgMISIIR-TAG mice.

### Cell lines and culture conditions

Pure C57BL/6 MOVCAR cell lines, including MOVCAR 12, 5009 [49], 5025, 5183, 5438, 5447 and 5612, were established from bulk ascites isolated from individual ovarian tumor-bearing C57BL/6 TgMISIIR-TAG mice as previously described [27]. Tumorigenic spontaneously transformed murine ovarian surface epithelial cell (MOSEC) lines ID-8, IF-5 and IG-10 were a gift from

Dr. Katherine Roby, University of Kansas Medical Center, and ID-8 cells stably overexpressing murine VEGF164 were a gift from Dr. George Coukos, University of Pennsylvania. All MOVCAR and MOSEC cells were maintained in DMEM supplemented with 4% FBS, 1× Insulin/Transferrin/Selenium-A (ITS, supplied as 100× stock from Gibco/Invitrogen), penicillin/streptomycin (100 units/mL and 100 µg/mL, respectively) and 2 mM l-glutamine and incubated at 37°C in 5% CO<sub>2</sub>. Culture medium was changed once weekly and cells were trypsinized and passaged at 4-5 day intervals when they reached confluence. MOVCAR cells were prepared for *in vivo* injection as described [49]. For *in vivo* imaging, cells were transduced with a retroviral construct encoding the firefly luciferase gene (pWZL-Luc, generously provided by Dr. Maureen Murphy, FCCC) using standard methods.

#### Immunoblot and immunoprecipitation

To prepare lysates for immunoblot analysis, cells were washed with cold PBS, lysed with M-PER mammalian protein extraction reagent (Thermo Scientific, Rockford, IL) supplemented with a cocktail of protease inhibitors (Complete Mini, Roche, Indianapolis, IN) and protein concentration was determined by BCA method (Thermo Scientific, Rockford, IL). Equal amounts of protein samples were resolved by SDS-PAGE gel electrophoresis on 12% acrylamide gels and transferred to polyvinylidene difluoride membrane (Immobilon, Millipore Corp., Bedford, MA). Membranes were blocked in 5% milk and 0.1% Tween-20 in 1× PBS for 1 h prior to incubation with primary antibodies recognizing SV40 TAg (Pab 101) and mouse p53 (Pab 240) obtained from Santa Cruz Biotechnology, Inc. at 1:1000 dilution. Horseradish peroxidase-conjugated secondary antibodies were used according to manufacturer's protocols. Immunoreactivity was visualized using the ECL system and was exposed to BioMax MR film (Eastman Kodak Co.).

For immunoprecipitation, cells were grown in 100-mm plates and lysed in 1 ml M-PER mammalian protein extraction reagent. The whole cell lysates were incubated with SV40 TAg antibody (Pab101) at a dilution of 1:100 at 4°C overnight with constant mixing. Protein A beads (40 µl) were added and mixed for 3 h at 4°C. Immunoprecipitates were then washed 5 times with M-PER mammalian protein extraction reagent and pellets resuspended in Laemli buffer for protein electrophoresis and immunoblot analysis performed as described above with antibodies against TAg and p53.

#### Cell cycle analysis

Cells were prepared for cell cycle analysis using the fluorescent nuclear stain propidium iodide and fluorescent sorting was carried out using the Guava Personal

Cell Analysis machine exactly as described by the manufacturer (Guava Technologies).

#### RNA preparation, quantitative reverse transcription PCR

Total RNA was isolated from MOVCAR cells using the RNA Easy Mini Kit (Qiagen). With the assistance of the FCCC Genomics Facility, levels of *Mdm2* mRNA expression were evaluated by real-time quantitative reverse transcription PCR (qRT-PCR) using Taqman technology with probe sets for *Mdm2* and *Hprt1* obtained from Applied Biosystems, Carlsbad, CA.

#### Quantitation of secreted VEGF by ELISA

Cells ( $5 \times 10^5$ ) were plated in triplicate in 6-well dishes and grown in complete medium for 72 hours. The conditioned culture medium was removed and the level of secreted VEGF present in the medium was determined by ELISA using the Mouse VEGF Quantikine Elisa Kit (R&D systems, Minneapolis, MN). After removal of the conditioned culture supernatant, cells were immediately rinsed with PBS, trypsinized and the number of cells present in each well was counted. Secreted VEGF levels were normalized to the total number of cells present in the sample to determine the amount of VEGF/10<sup>4</sup> cells. Three independent assays were performed and the amount of secreted VEGF/10<sup>4</sup> cells expressed as the mean value for each cell line tested.

#### Oophorectomy and MOVCAR cell allografts

Four to six week-old ovarian tumor-prone TgMISIIR-TAg mice were anesthetized by i.p. injection of 95 µl per 10 gram body weight of 10 mg/mL Ketamine hydrochloride and 1 mg/mL Xylazine hydrochloride in sterile saline and subjected to oophorectomy using a standard aseptic surgical procedure commonly used for transgenic embryo injection to expose the ovarian fat pad and ovary (described in detail in [49]). Once exposed, a small incision was made in the ovarian bursa that enabled removal of the resident ovary and/or fallopian tube. The ovarian bursa was sealed with surgical glue and the reproductive tract returned through the incision in the body wall. The surgical incision was closed with wound clips. The same surgical procedure was used for orthotopic (i.b.) injection of MOVCAR cells into recipient mice. Methods for i.b. and i.p. (pseudo-orthotopic) injections of MOVCAR cells were previously described in detail [49].

#### Preparation and analysis of tissues, histology and immunohistochemistry

All mice were euthanized by CO<sub>2</sub> asphyxiation, necropsied and examined for gross abnormalities. Pathologically altered organs, entire reproductive tracts and representative specimens of multiple organs and tissues,

including the brain, lung, liver, kidney, spleen, pancreas and intestine were removed at necropsy, fixed in 10% (v/v) neutral buffered formalin (NBF) overnight, transferred to 70% ethanol and paraffin-embedded. In mice with evident tumor, specimens of the tumor tissue were also excised, snap frozen in liquid N<sub>2</sub> and stored at -80° C. For histological analysis, 5 μm formalin fixed paraffin embedded tissue sections were cut for either H&E staining or immunohistochemistry (IHC). Histopathological analysis was performed by a pathologist with expertise in human and murine malignancies (AKS).

Sections of tumor tissue for IHC staining were cut on SuperFrost Plus charged slides (Fisher). Unstained sections were deparaffinized, subjected to antigen retrieval and stained with antibody against SV40 TAg (Pab 101, 1:100) as described [27].

#### **Bioluminescent imaging (BLI)**

For detection of *in vivo* growth of pWZL-Luc transduced MOVCAR tumor cells, mice were anesthetized with 2% isoflurane and given i.p. injections of 100 mg/kg luciferin substrate (Caliper Life Sciences) ten minutes prior to imaging using the IVIS Spectrum *in vivo* imaging system (Caliper Life Sciences) as described [49]. Image analysis was performed and total flux emission (photons/second) in the region of interest (ROI) was determined using the Living Image Software for the IVIS Spectrum.

## **Results**

### **Allografted MOVCAR cells grow in immunodeficient mice, but not in wild type C57BL/6 mice**

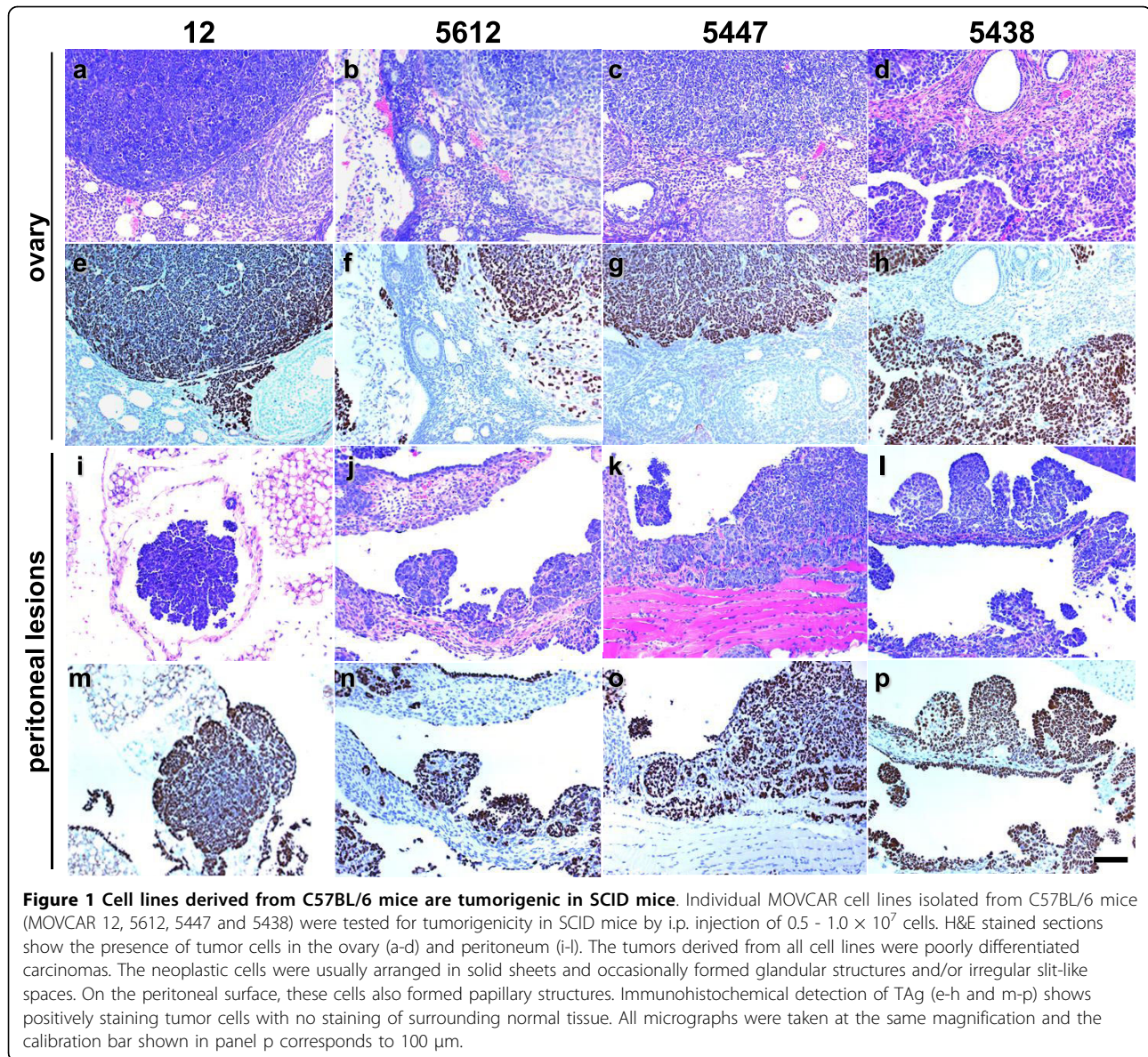
Previous work showed that MOVCAR cell lines could be readily established from the malignant ascites of individual female TgMISIIR-TAg founder mice with ovarian tumors and that these cells were tumorigenic in immunocompromised SCID mice [27]. Subsequently, MOVCAR cell lines have been isolated from the EOC-bearing female offspring of a fully penetrant stable transgenic line of EOC-prone mice, TgMISIIR-TAg-DR26, derived from a male founder [28]. These cells exhibited the capacity for pseudo-orthotopic tumor growth giving rise to disseminated peritoneal tumors in SCID mice similar to advanced EOC observed in humans (data not shown). While the ability to grow tumor cells *in vivo* in immunodeficient animals is highly valuable for tumor biology studies, it is somewhat limited in that important contributions of immune cell signaling in the tumor microenvironment are lacking. Therefore, the ability to grow tumor cells in a syngeneic host is highly desirable. In establishing such a model, important considerations include the genetic background of both the host from which the tumor cells were isolated and the recipient animal into which they will be allografted. An additional

consideration is the potential immunogenicity of the transgene protein product if it is not expressed endogenously in wild type mice, as is the case for SV40 TAg. All TgMISIIR-TAg transgenic mice were initially established in a B6C3F1 first generation hybrid genetic background and maintained by crossing to wild type C57BL/6 mice, thus resulting in a mixed genetic background of the offspring and any cell lines derived from these mice. To address this issue, male TgMISIIR-TAg-DR6 mice were maintained as hemizygotes with respect to the TAg transgene and backcrossed to wild type female C57BL/6 mice for a minimum of ten generations to ensure >99% purity of the C57BL/6 genetic background. No changes in either tumor latency or TAg expression patterns in ovarian tumors and reproductive tracts of female mice were observed during the process of backcrossing. Several new MOVCAR cell lines (MOVCAR 12, 5009, 5025, 5438, 5447 and 5612) were established from the ascites of ovarian tumor bearing pure C57BL/6 TgMISIIR-TAg-DR6 mice and tested for tumorigenic potential following i.p. injection of  $5 \times 10^6$  -  $1 \times 10^7$  cells in SCID mice. Tumors developed within one to five months in SCID mice injected with all six cell lines tested (Figure 1, Table 1 and data not shown). In addition to the presence of peritoneal tumor nodules on the pancreas, omentum, mesentery, body wall and diaphragm, several of the SCID mice exhibited grossly enlarged ovaries at necropsy and histopathological review of H&E and TAg stained sections confirmed the presence of TAg positive tumor around and within the ovarian cortex. Tumors exhibited histology similar to high-grade serous ovarian carcinomas in women. Next, we similarly tested the tumorigenicity of MOVCAR cells in wild type C57BL/6 mice (n= 5 - 10 mice/group). Although each cell line tested was tumorigenic in SCID mice, none of the cell lines engrafted in immunocompetent wild type C57BL/6 mice (Table 1 and data not shown). The lack of tumor development in the immunocompetent C57BL/6 mice suggests, as previous studies have shown [50], that the expression of TAg proteins in the MOVCAR cells was immunogenic in wild type C57BL/6 recipients.

### **Analysis of SV40 TAg expression and function in MOVCAR cell lines**

One of the principle mechanisms of oncogenicity of SV40 virus is the capacity of the large TAg protein to bind to and functionally inactivate the p53 and Rb tumor suppressor proteins [51]. Expression of the large TAg protein was verified by Western blot in all of the MOVCAR cell lines, but absent in murine NIH3T3 cells (data not shown) or MOSEC cell lines IF-5, ID-8, and IG-10 (Figure 2A). In cells expressing wild type p53, p53 protein is kept at low, typically undetectable levels by





**Figure 1** Cell lines derived from C57BL/6 mice are tumorigenic in SCID mice. Individual MOVCAR cell lines isolated from C57BL/6 mice (MOVCAR 12, 5612, 5447 and 5438) were tested for tumorigenicity in SCID mice by i.p. injection of  $0.5 - 1.0 \times 10^7$  cells. H&E stained sections show the presence of tumor cells in the ovary (a-d) and peritoneum (i-l). The tumors derived from all cell lines were poorly differentiated carcinomas. The neoplastic cells were usually arranged in solid sheets and occasionally formed glandular structures and/or irregular slit-like spaces. On the peritoneal surface, these cells also formed papillary structures. Immunohistochemical detection of TAG (e-h and m-p) shows positively staining tumor cells with no staining of surrounding normal tissue. All micrographs were taken at the same magnification and the calibration bar shown in panel p corresponds to 100  $\mu$ m.

ubiquitin mediated proteasomal degradation [52]. However, in cells expressing SV40 Large TAG, p53 protein remains bound to the TAG, resulting in p53 protein stabilization [52]. Consistent with these previous observations and our own published results showing p53 protein stabilization in TgMISIR-TAg ovarian tumors [27], we observed consistently high levels of p53 protein in MOVCAR cell lines, but not in MOSEC cell lines IF-5, ID-8, and IG-10 or NIH3T3 cells (Figure 2A and data not shown). Physical interaction of the TAG and p53 proteins in MOVCAR cells was confirmed by coimmunoprecipitation assay. Whole cell lysates immunoprecipitated with a TAG-specific antibody (Pab 101) and probed for p53 showed that p53 protein co-precipitated with TAG in all of the MOVCAR cells tested (Figure 2A,

lower panels). To confirm that TAG binding results in the functional abrogation of p53, MOVCAR cells were treated with 200 nM etoposide for 0, 8 and 24 hours. The capacity for a p53-mediated response to etoposide treatment was assessed by evaluation of p53 protein expression and stabilization, induction of the p53 responsive gene *Mdm2* and induction of cell cycle arrest. Treatment of the TAG negative ID-8 cells with etoposide resulted in induction and stabilization of p53 protein (Figure 2B), suggesting that p53 is functional in these cells. However, in TAG expressing MOVCAR cells, p53 protein was already stabilized and no further induction or stabilization of p53 was observed in the etoposide treated compared to untreated cells (Figure 2B). In etoposide treated ID-8 cells, qRT-PCR analysis showed

**Table 1 Growth of MOVCAR cells in C57BL/6 and SCID mice**

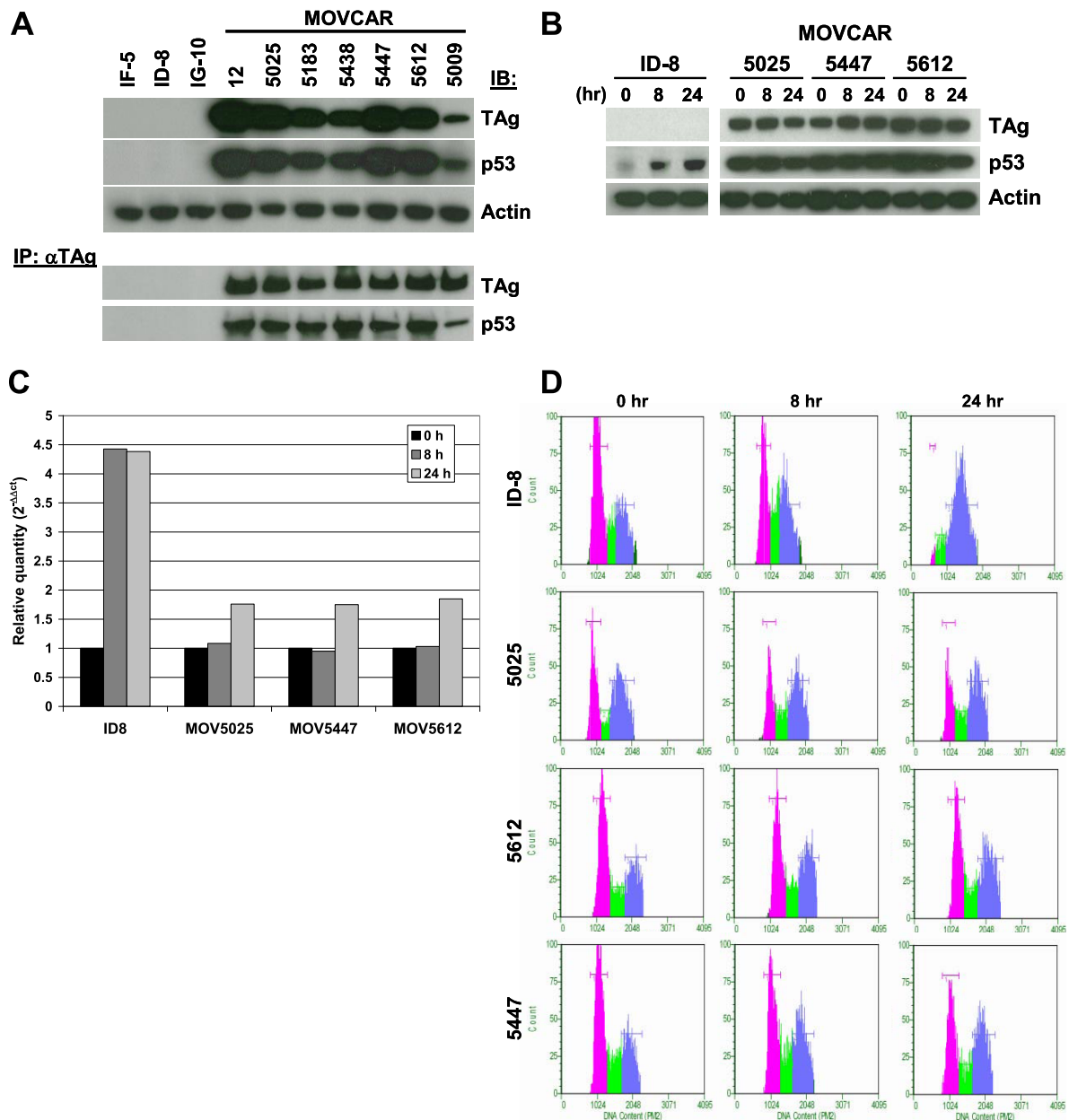
Host	MOVCAR cell line	# cells injected i.p.	Survival (days post tumor cell injection)	Tumor location	Ascites (>1.0 mL)
C57BL/6	12	$1 \times 10^7$	243	None	
C57BL/6	12	$1 \times 10^7$	256	None	
C57BL/6	12	$1 \times 10^7$	256	None	
C57BL/6	12	$1 \times 10^7$	256	None	
C57BL/6	12	$2 \times 10^7$	326	None	
C57BL/6	12	$2 \times 10^7$	326	None	
C57BL/6	12	$3 \times 10^7$	208	None	
C57BL/6	12	$3 \times 10^7$	208	None	
C57BL/6	12	$3 \times 10^7$	303	None	
C57BL/6	12	$3 \times 10^7$	303	None	
SCID	12	$1 \times 10^7$	93	Peritoneal cavity, invasion of ovarian cortex	+
SCID	12	$1 \times 10^7$	100	Peritoneal cavity, invasion of ovarian cortex	+
SCID	12	$1 \times 10^7$	103	Peritoneal cavity, invasion of ovarian cortex	+
SCID	12	$1 \times 10^7$	103	Peritoneal cavity, invasion of ovarian cortex	+
SCID	12	$1 \times 10^7$	105	Peritoneal cavity, invasion of ovarian cortex	+
SCID	5009	$1 \times 10^7$	25	Peritoneal cavity	+
SCID	5009	$1 \times 10^7$	25	Peritoneal cavity	+
SCID	5009	$1 \times 10^7$	34	Peritoneal cavity	+
SCID	5009	$1 \times 10^7$	34	Peritoneal cavity	+
SCID	5009	$1 \times 10^7$	34	Peritoneal cavity	+
SCID	5009	$1 \times 10^7$	34	Peritoneal cavity	+
SCID	5009	$1 \times 10^7$	34	Peritoneal cavity	+
SCID	5183	$1 \times 10^7$	109	Peritoneal cavity, invasion of ovarian cortex	+
SCID	5183	$1 \times 10^7$	116	Peritoneal cavity, invasion of ovarian cortex	
SCID	5183	$1 \times 10^7$	116	Peritoneal cavity, invasion of ovarian cortex	
SCID	5348	$1 \times 10^7$	141	Peritoneal cavity	+
SCID	5348	$1 \times 10^7$	141	Peritoneal cavity, invasion of ovarian cortex	+
SCID	5348	$5 \times 10^6$	141	Peritoneal cavity	+
SCID	5447	$1 \times 10^7$	95	Peritoneal cavity, invasion of ovarian cortex	+
SCID	5447	$1 \times 10^7$	95	Peritoneal cavity, invasion of ovarian cortex	+
SCID	5447	$5 \times 10^6$	95	Peritoneal cavity	
SCID	5447	$5 \times 10^6$	97	Peritoneal cavity, invasion of ovarian cortex	+
SCID	5612	$1 \times 10^7$	74	Peritoneal cavity, invasion of ovarian cortex	
SCID	5612	$5 \times 10^6$	97	Peritoneal cavity	+

greater than four-fold induction of *Mdm2* expression (Figure 2C) and cell cycle analysis showed growth arrest indicated by accumulation of cells in G2/M (Figure 2D). None of the similarly treated TAg positive MOVCAR cell lines exhibited robust induction *Mdm2* expression or G2/M growth arrest. Taken together, these results confirm the functional activity of TAg in MOVCAR cell lines.

#### VEGF secretion in MOVCAR cell lines

In culture, MOVCAR cells exhibit differences in growth rates and expression of signaling proteins associated with EOC, including VEGF among others (Additional file 1, Table S1 and data not shown). Differences in tumor growth rates and ascites production among different MOVCAR cell lines were also apparent *in vivo*.

Peritoneal implantation of MOVCAR 5009 or 5025 cells in SCID mice resulted in rapid tumor growth and the production of voluminous ascites that necessitated euthanasia within 4-6 weeks. In SCID mice injected with MOVCAR 5183, 5438, 5447 and 5612 cells, the time to development of tumors necessitating euthanasia was between 12 and 20 weeks and mice generally exhibited lower volumes of ascites at the time of necropsy (Table 1 and data not shown). The cell lines expressing the highest levels of secreted VEGF *in vitro* (e.g., MOV-CAR 5009 and 5025) resulted in more rapid tumor growth and ascites production *in vivo* than cell lines with lower VEGF levels. This observation is consistent with a previous study showing that enforced expression of VEGF in the spontaneously transformed MOSEC line ID-8 led to more aggressive *in vivo* tumor growth and



**Figure 2 Analysis of SV40 TAg expression and function in MOVCAR cells.** A) Whole cell lysates of spontaneously transformed MOSEC lines (IF-5, ID-8 and IG-10) and MOVCAR cell lines (12-3, 5025, 5183, 5438, 5447, 5612 and 5009) were evaluated by immunoblot analysis to determine relative levels of SV40 TAg, p53 and Actin (loading control) protein expression. Lysates were also immunoprecipitated with anti-TAg antibody Pab 101 followed by immunoblot analysis of TAg and p53 protein present in the immunoprecipitates. B) Induction of p53 protein was evaluated by immunoblot following treatment of ID-8 and MOVCAR 5025, 5447 and 5612 cells with 200 nM etoposide for 0, 8 and 24 hr. C) Levels of *Mdm2* gene expression in ID-8 and MOVCAR 5025, 5447 and 5612 cells following treatment with 200 nM etoposide for 0, 8 and 24 hr were evaluated by qRT-PCR. D) Cell cycle analysis was performed on ID-8 and MOVCAR 5025, 5447 and 5612 cells following treatment with 200 nM etoposide.

more ascites production than the parental cell line [18]. Like individual MOSEC lines [10], the results also suggest that although MOVCAR cell lines are derived from ascites from an inbred strain of transgenic mice, individual cell lines exhibit intrinsic differences.

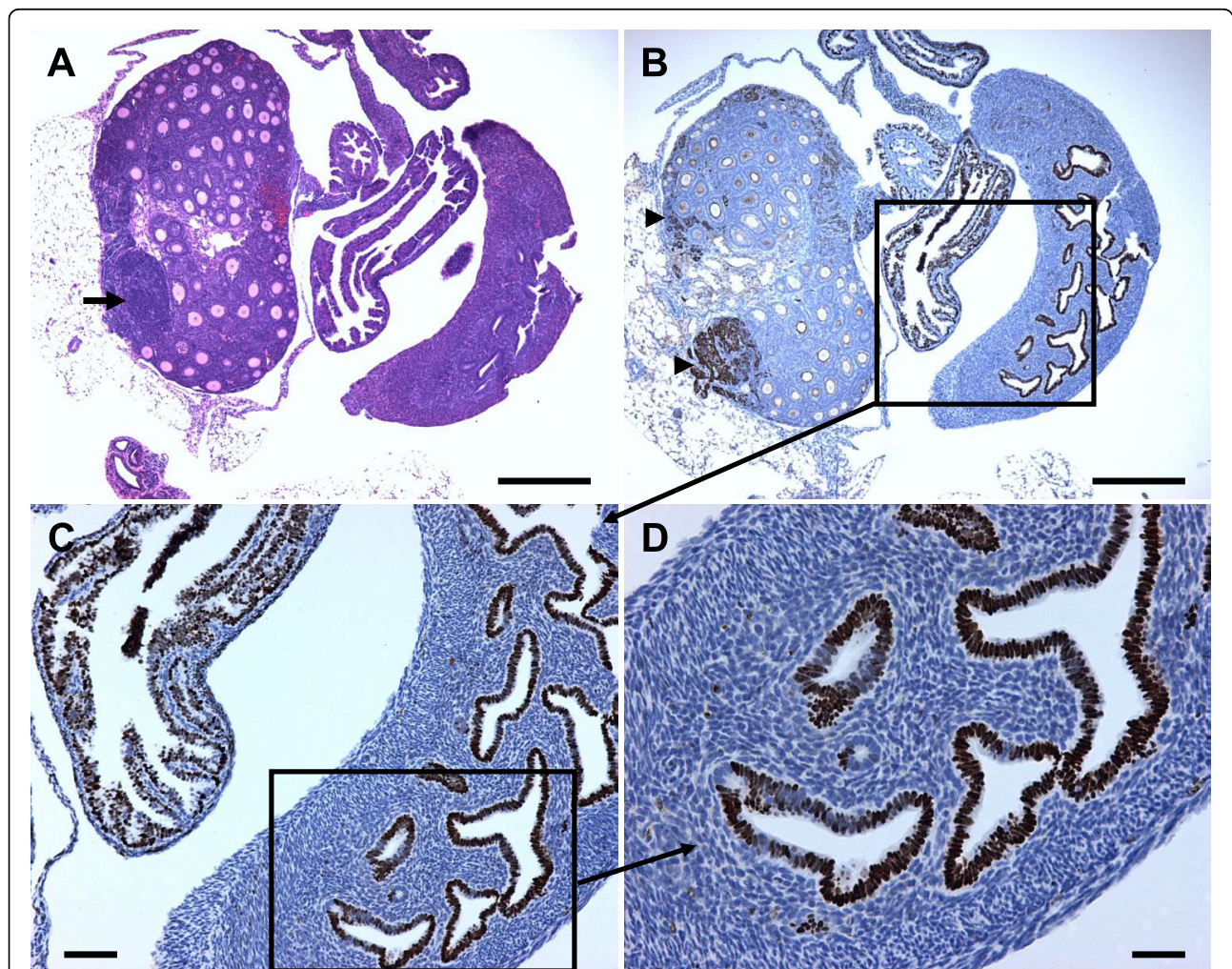
**Oophorectomized C57BL/6 TgMISIIR-TAG-DR6 mice develop intrabursal and disseminated peritoneal carcinomas**

In order to identify a suitable syngeneic recipient strain for *in vivo* growth, one potential strategy to overcome



immunogenicity of the TAg transgene proteins is to grow MOVCAR cells in tumor-prone C57BL/6 TgMISIIR-TAg-DR6 transgenic mice. We hypothesized that removal of the ovaries of young TgMISIIR-TAg-DR26 transgenic mice might abrogate tumor development and render these mice suitable for engraftment of MOVCAR cells. In addition to TAg expression detected in tumor cells, TAg staining was also commonly observed in the uterine and fallopian tube epithelia of 28 day-old mice (Figure 3 and [28]), although neither uterine nor fallopian tube carcinomas were observed at the time of euthanasia. However, it is possible that ovarian carcinoma development was sufficiently rapid that it outpaced carcinoma development in the endometrium or

oviduct. To determine whether removal of the ovaries from TgMISIIR-TAg-DR26 transgenic mice was sufficient to inhibit tumor formation, a series of oophorectomy experiments were performed (summarized in Table 2). Mice were oophorectomized between four and six weeks of age, which is prior to the age of onset of cyclivity at 48 days in C57BL/6 mice [53] and prior to any obvious enlargement of the ovaries (Figure 3, [28] and data not shown). Female C57BL/6 TgMISIIR-TAg-DR26 transgenic mice were subjected to the following surgical manipulations: 1) bilateral oophorectomy (n = 9), 2) bilateral oophorectomy and salpingectomy (n = 5) and 3) bilateral oophorectomy and salpingectomy with removal of the ovarian bursa (n = 8) and the results are



**Figure 3 Early tumor formation in TgMISIIR-TAg-DR26 mice.** The presence and extent of tumor formation in a 28-day old female TgMISIIR-TAg-DR26 mouse was confirmed by histopathological evaluation. A) Low power magnification (40x) of an H&E stained section of the reproductive tract showing the ovary and segments of the fallopian tube and uterus reveals an early-stage ovarian tumor indicated by the arrow. B) Immunostaining of an adjacent section shows TAg positive tumor cells in the ovary (arrowheads). TAg positive staining cells were also apparent in the epithelium of the fallopian tube and endometrium. The segment contained within the box is shown in (C) at higher magnification (100X). D) High power magnification (400X) of the boxed area in (C) showing the TAg positive epithelial cells of the endometrial glands. Calibration bar: A and B, 1 mm; C, 250  $\mu$ m; D, 125  $\mu$ m.



summarized in Table 2. Tumor formation was detected in most mice and histopathological evaluation revealed the presence of carcinomas that were similar to those that occurred spontaneously in TgMISIIR-TAg-DR26 transgenic mice. Tumors arising in the TgMISIIR-TAg-DR26 mice in which the ovarian bursa was removed at the time of bilateral oophorectomy and salpingectomy were widely disseminated in the peritoneal cavity and resembled primary peritoneal carcinomatosis. The origin of the tumors remains uncertain as 28 day-old mice already exhibited the presence of TAg positive tumor cells in the ovary and TAg positive cells in the fallopian tube and uterus (Figure 3 and [28]). Tumors arising in ovariectomized mice may originate from residual tumor cells shed from the ovaries prior to the time of surgery, or alternatively, from TAg positive cells present in the fallopian tubes or the uterus. Although we cannot definitively distinguish between these possibilities, the histology of tumors arising in oophorectomized mice resembled the high-grade serous ovarian adenocarcinomas and disseminated peritoneal carcinomatosis that occurs spontaneously in TgMISIIR-TAg-DR26 mice suggesting that ovarian tumors arise from the ovaries and/or fallopian tube and that tumor initiation occurs early in these mice. There was no evidence of endometrial carcinomas in any of the groups, suggesting that although the SV40 TAg transgene protein is expressed in the endometrium, this expression is not sufficient for full oncogenic transformation of this tissue. Importantly, as surgical removal of the ovaries and oviduct are not sufficient to prevent tumor development, these mice are unsuitable as allograft hosts for implantation of MOV-CAR cells.

#### Phenotypes of TgMISIIR-TAg transgenic mice

As an alternative means to circumvent the problem of TAg immunogenicity in recipient mice, we used a strategy previously described by Mintz and Silvers [54] in which inbred transgenic mice with low expression of the tumor promoting transgene, and hence little or no susceptibility to tumor formation, were utilized as allograft recipients. To identify such transgenic lines, we isolated and phenotypically analyzed a total of 96 TAg positive TgMISIIR-TAg transgenic founders. Among these, 36

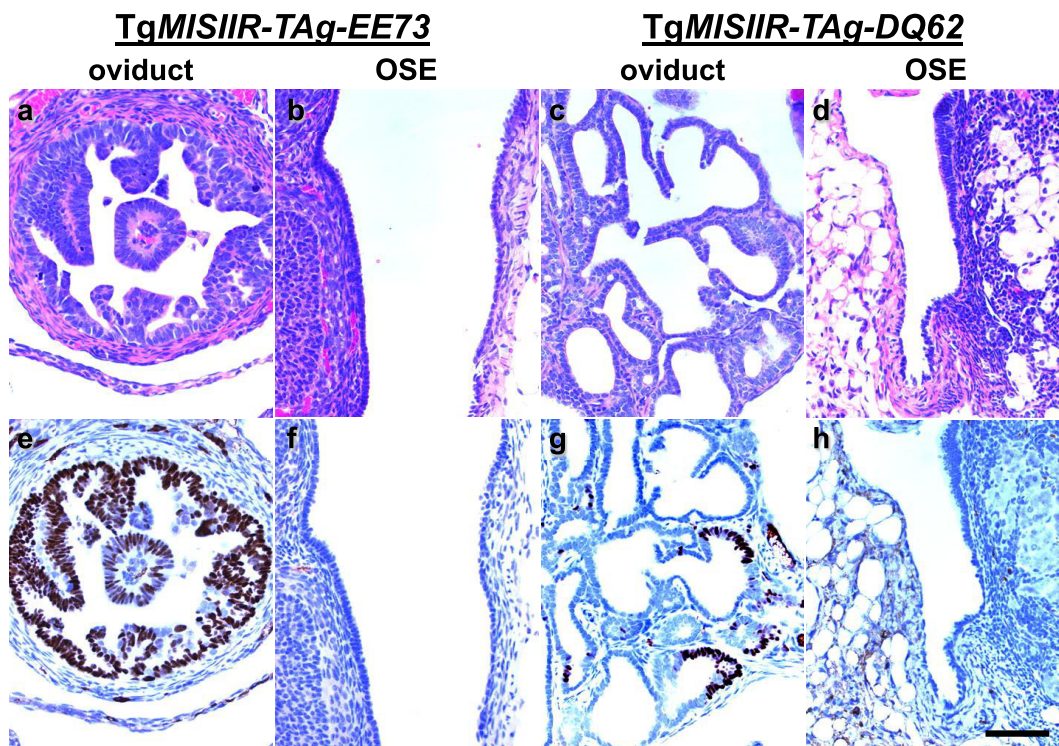
were female, and as previously reported [27], 18/36 (50%) developed early onset, bilateral, moderately to poorly differentiated ovarian carcinomas with widespread peritoneal dissemination. Tumors exhibiting differentiated morphology resembled high-grade serous EOCs. Among the remaining female founders, 3/36 (8%) developed non-ovarian tumors and 15/36 (42%) lacked detectable TAg transgene protein expression, failed to transmit the transgene or failed to breed. Therefore, TAg positive male founders were bred and offspring were analyzed to identify stable transgenic lines of mice that transmitted the TAg transgene. Similar to female TgMISIIR-TAg founder mice, male founders were frequently infertile, sub-fertile or did not transmit transgene expression. Among the fertile transgenic lines established from TgMISIIR-TAg male founders, several exhibited TAg transgene expression in the fallopian tubes of female offspring without obvious pathology. Further phenotypic characterization of female offspring of two of these transgenic lines, TgMISIIR-TAg-DQ62 and TgMISIIR-TAg-EE73, showed that although the mice expressed the TAg transgene, they exhibited normal fertility and lifespan and failed to develop tumors. The expression of TAg protein in these mice was detected in a limited number of epithelial cells lining the fallopian tube (Figure 4). These transgenic lines are referred to as "TgMISIIR-TAg-Low" mice due to the relatively limited expression of TAg protein. Previous work [54] suggested that because these mice normally expressed the TAg protein and exhibited little or no susceptibility tumor formation, they could serve as suitable hosts for implantation of TAg expressing MOV-CAR cells.

#### MOV-CAR cells grow as i.p. and orthotopic allografts in C57BL/6 TgMISIIR-TAg-Low recipients

Prior to testing whether the TgMISIIR-TAg-Low transgenic lines, DQ62 and EE73, could serve as recipients for allografted MOV-CAR cells, each was backcrossed to wild type C57BL/6 mice for a minimum of ten generations to ensure genetic purity. No changes in TAg expression patterns in the reproductive tracts of female mice were observed during the backcrossing process. To test whether MOV-CAR cells could be grown as allografts in female C57BL/6 TgMISIIR-TAg-Low transgenic mice, three TgMISIIR-TAg-DQ62 mice and three TgMISIIR-TAg-EE73 mice were each injected i.p. with  $2 \times 10^7$  MOV-CAR 12 cells. Similar to SCID mice, C57BL/6 TgMISIIR-TAg-DQ62 and TgMISIIR-TAg-EE73 mice injected i.p. with MOV-CAR 12 cells developed tumors that necessitated euthanasia within three months (Figure 5 and Table 3). At necropsy, disseminated peritoneal tumors were detected and several mice exhibited enlarged ovaries. In addition to the presence of

**Table 2 Oophorectomized TgMISIIR-TAg transgenic mice develop epithelial tumors**

Surgical procedure	Number of mice with tumors
1) Remove TgMISIIR-TAg ovaries	9/9
2) Remove TgMISIIR-TAg ovaries and fallopian tubes	4/5
3) Remove TgMISIIR-TAg ovaries, fallopian tubes and bursa	6/8



**Figure 4** *TgMISIIR-TAg-EE73* and *TgMISIIR-TAg-DQ62* mice exhibit restricted TAG expression. Histopathological evaluation of H&E (a-d) and TAG (e-h) stained sections of female *TgMISIIR-TAg-EE73* (a, b, e and f) and *TgMISIIR-TAg-DQ62* (c,d, g and h) mice show TAG positive cells present in the oviduct (e and g), but not in the OSE and bursal epithelium of the same mice (f and h). All micrographs were taken at the same magnification and the calibration bar shown in panel h corresponds to 100  $\mu$ m.

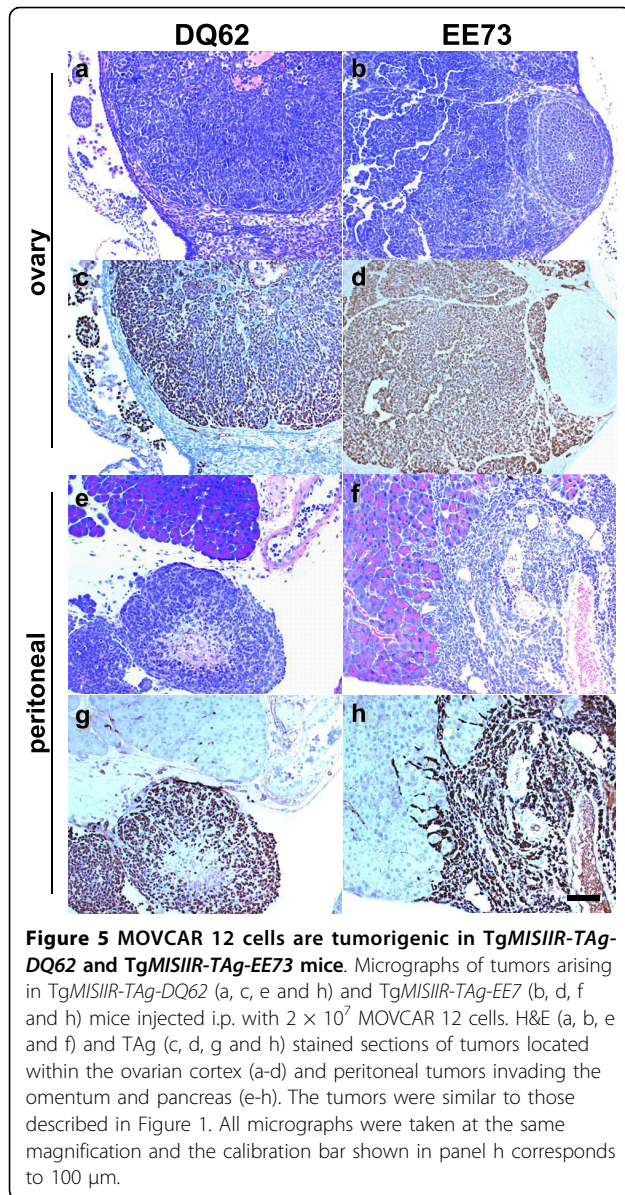
disseminated peritoneal adenocarcinoma infiltrating the pancreas, omentum, mesentery, diaphragm and abdominal wall, histopathological review of H&E and TAG stained sections revealed the presence of tumor cells growing within the intrabursal space surrounding the ovaries and within the ovarian cortex of both the C57BL/6 *TgMISIIR-TAg-DQ62* and *TgMISIIR-TAg-EE73* mice (Figure 5 and Table 3). Detection of the TAG positive tumor cells in the ovaries of both SCID (Figure 1) and syngeneic C57BL/6 *TgMISIIR-TAg-Low* mice (Figure 5) suggests that MOVCAR cells exhibit a strong propensity for organotropic homing to ovary. To ensure that the observed results were not cell line-specific, five additional MOVCAR cell lines (MOVCAR 5009, 5025, 5183, 5447 and 5612) were tested for tumorigenic potential following i.p. and i.b. injection. All five cell lines tested grew as allografts in C57BL/6 *TgMISIIR-TAg-Low* mice (Figure 6, Table 3 and data not shown) producing disseminated peritoneal adenocarcinoma frequently accompanied by intrabursal and intra-ovarian tumor growth. Like the allograft experiments performed in SCID mice, individual cell lines exhibited differences in tumor latency and dissemination pattern in C57BL/6 *TgMISIIR-TAg-Low* mice. However, the tumor latency

and dissemination pattern for any individual cell line are similar in SCID and C57BL/6 *TgMISIIR-TAg-Low* allograft recipients (compare data summarized in Tables 1 and 3). Taken together, these results show that both lines of C57BL/6 *TgMISIIR-TAg-Low* mice can serve as immunocompetent syngeneic recipients for the growth of MOVCAR tumor cells isolated from individual tumor bearing C57BL/6 *TgMISIIR-TAg-DR6* mice.

#### **Tumor growth in *TgMISIIR-TAg-Low* mice can be monitored *in vivo* by bioluminescent imaging**

Although orthotopic or pseudo-orthotopic implantation of EOC cells represents a more highly relevant tumor microenvironment for tumor growth, there are inherent difficulties in detection and quantitation of tumor growth and progression in deeply embedded tumors growing within the intrabursal space or as disseminated peritoneal disease. To facilitate detection and quantitation of tumor growth *in vivo*, MOVCAR 5009 and 5447 cells were transduced with a retroviral construct encoding firefly luciferase. Stably transduced cells were implanted into C57BL/6 *TgMISIIR-TAg-Low* mice by i.p. or i.b. injection and tumor growth was then monitored non-invasively by bioluminescent imaging (BLI).





Age matched female C57BL/6 TgMISIIR-TAg-Low (DQ62) mice injected i.p. with  $5.0 \times 10^6$  MOVCAR-5009-Luc cells rapidly developed disseminated peritoneal carcinomatosis readily detectable by BLI (data not shown). We predicted that detection of bioluminescent signal emanating from orthotopically implanted tumors would be technically more challenging in C57BL/6 TgMISIIR-TAg-Low mice due to the relatively low number of cells that can be implanted by this method (e.g.,  $8.0 \times 10^5$  cells) and by the presence of black pigment in the C57BL/6 mice compared to white mice. Therefore, SCID mice injected i.b. with the same number of either MOVCAR-5009-Luc or MOVCAR-5447-Luc cells were used as positive controls for BLI of orthotopically implanted tumor cells in age-matched female C57BL/6

TgMISIIR-TAg-Low mice injected i.b. with  $8.0 \times 10^5$  MOVCAR-5009-Luc (mouse numbers EE73 7245 and EE73 7263) or MOVCAR-5447-Luc (mouse numbers EE73 7244 and EE73 7261) cells (Figure 7). Tumor growth was monitored by BLI for up to 11 weeks and showed that orthotopic implantation of cells resulted in proscribed luminescent signals that were confined to the site of intrabursal injection in both SCID and C57BL/6 TgMISIIR-TAg-Low mice (Figure 7 and Table 4). Although the same numbers of cells were injected in all mice, signal intensities appear stronger in SCID mice due to the lack of pigment and therefore, are not directly comparable to BLI signals in the C57BL/6 TgMISIIR-TAg-Low mice. *In vitro*, MOVCAR-5009-Luc cells grow much more rapidly than MOVCAR-5447-Luc cells. This pattern was also observed *in vivo*, with rapid acceleration of tumor growth detected three weeks post injection of MOVCAR-5009-Luc cells, while signal intensities detected in mice injected with MOVCAR-5447-Luc cells did not increase significantly until ten weeks post injection (Figure 7). Taken together, these data show that growth of MOVCAR cells engineered to express firefly luciferase can be monitored non-invasively by BLI and that differences in *in vivo* growth rates of individual MOVCAR cell lines can be detected using this method.

## Discussion

Utilization of animal models with an intact immune system is critical for the evaluation of immune-based therapeutic strategies and vaccine development. An SV40 TAg transgenic model of prostate cancer [55] has been used to study the effects of combining blockade of cytotoxic T lymphocyte antigen 4 (CTLA-4) and vaccination with granulocyte macrophage colony stimulating factor (GM-CSF;Gvax) and subsequent derivatives of this vaccine strategy [56-60]. The C57BL/6 syngeneic mouse ovarian cancer model developed by Roby et al, [10] has been used for studies of the contribution of cells in the tumor micro-environment, including epithelial-stromal cell interactions, VEGF induced-effects on tumor vasculature and tumor cell-secreted factors that stimulate cytokine production, macrophage infiltration and vascularization that favor tumor growth and progression [14,15,18]. Similar studies would be difficult to impossible to conduct in immunodeficient mice. The availability of an additional syngeneic mouse model of EOC will allow cross-comparison of mouse models and validation of key findings.

The functional utility of animal models of human cancer depends largely on the extent to which the animal model recapitulates the histology and biological behavior of the disease in humans. Many transgenic tumor models have been developed using the immediate early region of the SV40 virus containing the potentially oncogenic large and small T antigen (TAg and tAg) genes



**Table 3 Growth of MOVCAR cells in TgMISIIR-TAg-Low mice**

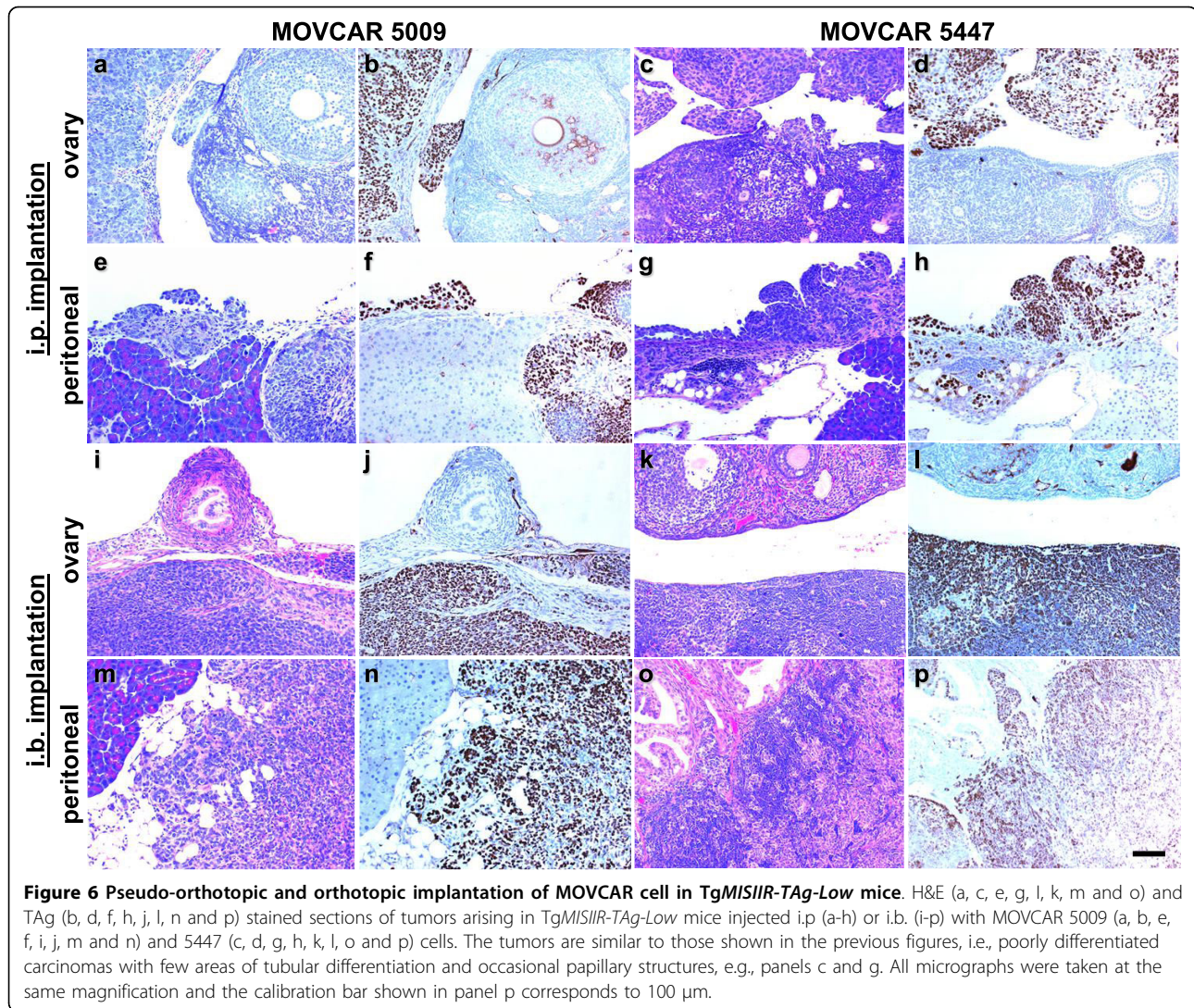
Host	MOVCAR cell line	# cells injected i.p.	Survival (days post tumor cell injection)	Tumor location	Ascites (>1.0 mL)
DQ62	12	$2 \times 10^7$	96	Peritoneal cavity, invasion of ovarian cortex	+
DQ62	12	$2 \times 10^7$	90	Peritoneal cavity, invasion of ovarian cortex	+
DQ62	12	$2 \times 10^7$	96	Peritoneal cavity, invasion of ovarian cortex	+
EE73	12	$2 \times 10^7$	90	Peritoneal cavity, invasion of ovarian cortex	
EE73	12	$2 \times 10^7$	96	Peritoneal cavity, invasion of ovarian cortex	
EE73	12	$2 \times 10^7$	90	Peritoneal cavity, invasion of ovarian cortex	
DQ62	5009	$5 \times 10^6$	28	Peritoneal cavity	+
DQ62	5009	$5 \times 10^6$	28	Peritoneal cavity	+
DQ62	5009	$5 \times 10^6$	28	Peritoneal cavity	+
DQ62	5009	$5 \times 10^6$	28	Peritoneal cavity	+
DQ62	5025	$5 \times 10^6$	30	Peritoneal cavity, invasion of ovarian cortex	+
DQ62	5025	$1 \times 10^7$	30	Peritoneal cavity, invasion of ovarian cortex	+
DQ62	5025	$1 \times 10^7$	37	Peritoneal cavity, invasion of ovarian cortex	+
DQ62	5025	$1 \times 10^7$	37	Peritoneal cavity, invasion of ovarian cortex	+
DQ62	5183	$2 \times 10^7$	108	Peritoneal cavity	
DQ62	5183	$2 \times 10^7$	49	Peritoneal cavity	+
DQ62	5612	$1.5 \times 10^7$	71	Peritoneal cavity	+
DQ62	5612	$1.5 \times 10^7$	71	Peritoneal cavity	+

[55,61-66]. The continued utility of SV40 TAg models in studying cancer is underscored by seminal contributions to our understanding of the “angiogenic switch” [67-71] and tumor progression and invasion [72]. Importantly, a recent study [73] identified an integrated gene expression signature from three distinct TAg mouse models (i. e., mammary, prostate and lung cancer models) that is comparable to a signature associated with the aggressive biological behavior and prognosis for several human epithelial tumors, including breast cancers. Results from this study showed that tumors arising in TAg-based mouse models share common features of gene expression with human cancer and are relevant preclinical models [73].

Female transgenic C57BL/6 TgMISIIR-TAg-DR26 mice develop spontaneous bilateral ovarian carcinoma with 100% penetrance [28]. Tumor progression in these mice is characterized by widespread peritoneal dissemination and the development of malignant ascites and tumor morphology and histology of the tumors closely resembles high-grade serous adenocarcinomas, the most common histologic subtype of EOC detected in women. Tumors and cell lines derived from primary tumors and ascites of tumor bearing mice exhibit several characteristics in common with human EOC cell lines and tumors including AKT/mTOR activation, COX1 overexpression and VEGF overexpression and secretion ([28,44-47] and the present study). In addition, a verapamil-sensitive Hoescht dye-excluding ovarian carcinoma side population (SP), a potential population of ovarian cancer initiating cells, was identified in MOVCAR cell

lines [48]. Ovarian tumors arising in C57BL/6 TgMISIIR-TAg-DR26 mice are sensitive to standard combination platinum and taxane chemotherapy and to mTOR inhibition with Everolimus (RAD001) [28,45]. These observations underscore the potential utility of these transgenic mice for preclinical evaluation of therapeutic agents. However, reflecting its relation to the biology of human EOC, tumor formation in this transgenic model is also stochastic, resulting in variation in the latency of tumor formation and time to metastasis. This necessitates relatively large cohorts of mice and non-invasive longitudinal *in vivo* imaging such as MRI to optimize results of therapeutics studies.

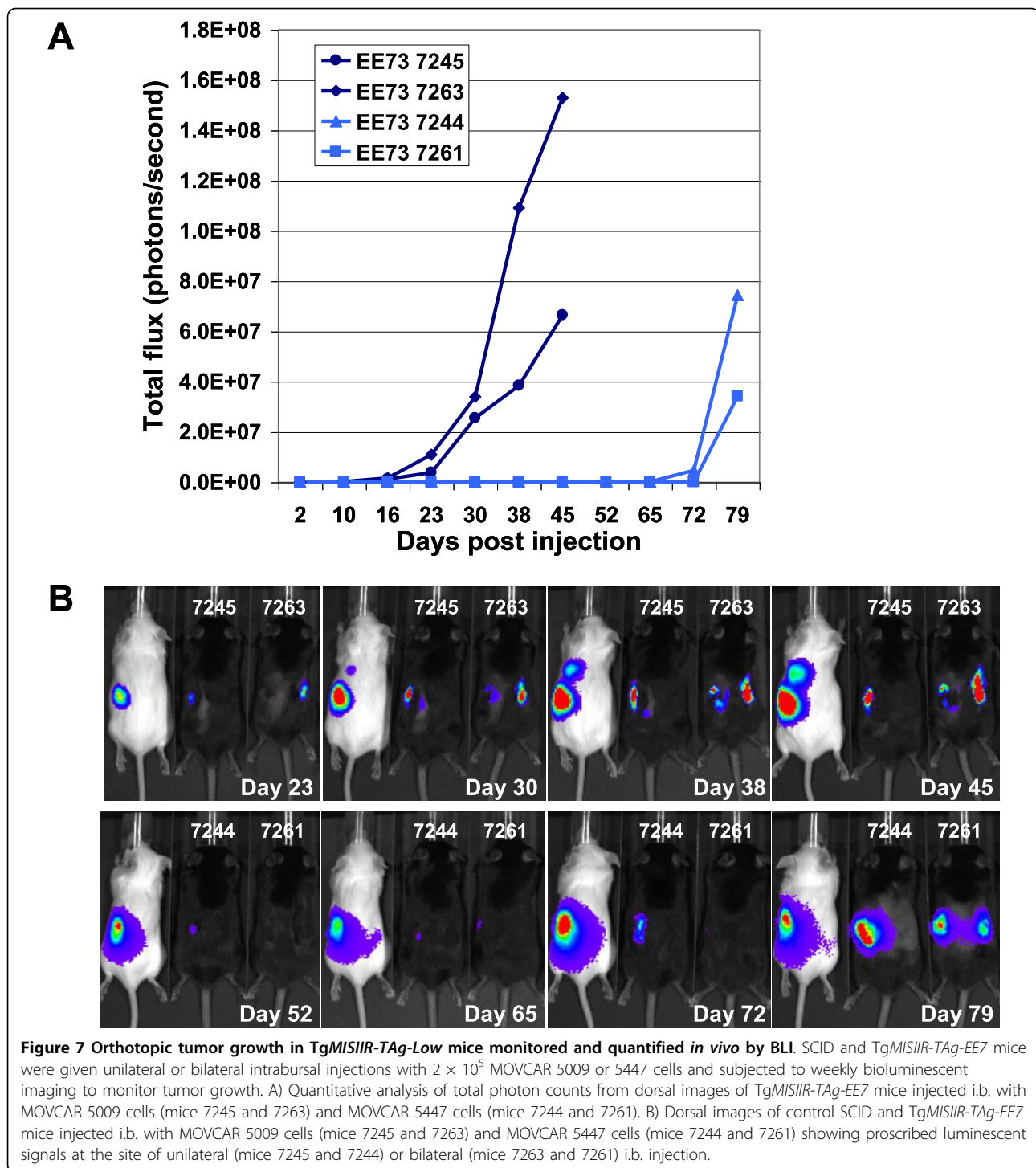
To overcome the limitations encountered with spontaneous tumor development, we isolated individual transgenic lines of non-tumor prone C57BL/6 TgMISIIR-TAg transgenic mice that can serve as syngeneic immunocompetent hosts for allografted TAg expressing MOVCAR cells isolated from tumor bearing C57BL/6 TgMISIIR-TAg-DR26 mice. Syngeneic mouse models of EOC in which spontaneously transformed ID-8 MOSEC grown as allografts in C57BL/6 recipients [10] or HM-1 tumor cells grown as allografts in B6C3F1 recipients [74] have been previously described. These syngeneic models have been used successfully for preclinical evaluation of therapeutic agents and studies of the role of the tumor microenvironment on ovarian tumor growth and progression [11-18,75]; however, these models each rely on single mouse ovarian carcinoma cell lines in which the underlying molecular mechanisms of malignant transformation remain undefined.



The ease of establishment of TAg-transformed MOVCAR cell lines in culture has enabled the isolation of a large number of distinct cell lines, several of which are described in the present study. Although derived from an inbred strain of mice, the stochastic manner in which tumors arise in C57BL/6 TgMISIIR-TAg-DR26 mice results in intrinsic differences in MOVCAR cell lines derived from individual tumor-bearing mice. MOVCAR cell lines grown in culture exhibit different growth rates and expression of proteins associated with EOC, such as levels of secreted VEGF. These cell lines also exhibit differences when grown *in vivo*. For example, some cells lead to very rapid growth and production of voluminous malignant ascites, whereas other cells are slower growing and produce less ascites. Interestingly, the cell lines that result in the highest levels of ascites production *in vivo* are the cell lines that exhibit the highest levels of

VEGF secretion *in vitro*. These observations suggest that although the primary oncogenic stimulus driving tumorigenesis in C57BL/6 TgMISIIR-TAg-DR26 transgenic mice is the same in all animals, there are likely additional genetic, epigenetic and/or gene expression alterations that contribute to ovarian tumor progression, and identification of these alterations may contribute to our understanding of human EOC. Moreover, once identified, the role of specific alterations in gene function in ovarian tumorigenesis can be studied in these cell lines as they are readily amenable to direct manipulation using established strategies for ectopic gene expression or RNA interference.

With regard to preclinical evaluation of novel therapeutic agents, our syngeneic mouse model of EOC provides several advantages. First, tumors are grown in fully immunocompetent mice enabling the evaluation of vaccine and immune-based therapeutic strategies. Second, TgMISIIR-



TAg-Low transgenic mice have been fully backcrossed to a pure C57BL/6 genetic background, exhibit normal fertility and lifespan and do not develop tumors. Thus, large cohorts of mice can be established for synchronous allograft initiation without interference of tumor growth initiated from the host. Third, the availability of multiple

distinct MOVCAR cells lines for evaluation avoids issues of cell line-specific effects, and because MOVCAR cells are easily manipulated in culture, on-target effects of therapeutics can be confirmed in parallel using RNAi based strategies for direct target knockdown. Finally, the ability to easily express reporter genes in MOVCAR cells facilitates



**Table 4 Intrabursal growth of MOVCAR-Luciferase cells in TgMISIIR-Tag-Low mice**

Host	MOVCAR cell line	# cells injected i.b.	site of injection	Survival (days post tumor cell injection)	Right ovary tumor volume (mm <sup>3</sup> )	Left ovary tumor volume (mm <sup>3</sup> )	Ascites (>1.0 mL)
EE73	5009	8 × 10 <sup>5</sup>	left	50	n/a	167	+
EE73	5009	8 × 10 <sup>5</sup>	bilateral	50	151	176	+
EE73	5447	8 × 10 <sup>5</sup>	left	81	n/a	57	
EE73	5447	8 × 10 <sup>5</sup>	bilateral	81	32	76	

n/a: not applicable

strategies for non-invasive *in vivo* optical imaging such as bioluminescent, fluorescent and near infrared fluorescent imaging.

## Conclusions

In conclusion, we have developed an immunocompetent syngeneic mouse model of EOC consisting of C57BL/6 TgMISIIR-Tag-Low transgenic mice that can serve as immunocompetent syngeneic allograft recipients for MOVCAR cell lines. Based on distinct characteristics of these cell lines and their amenability to *in vitro* manipulation of gene expression, this model represents a flexible system to study ovarian tumor biology and to evaluate the efficacy of novel therapeutic strategies.

## Additional material

### Additional file 1: Levels of secreted VEGF protein in MOVCAR cells.

The amount of secreted VEGF protein present in conditioned medium of seven independent MOVCAR cell lines was determined by ELISA assay.

## List of abbreviations

EOC: epithelial ovarian cancer; TAG: T antigen; SCID: severe combined immunodeficient; MOVCAR: murine ovarian carcinoma; OSE: ovarian surface epithelium; GEM: genetically engineered mouse; MISIIR: Müllerian inhibiting substance type II receptor; IHC: immunohistochemistry; BLI: bioluminescent imaging.

## Acknowledgements

The authors gratefully acknowledge Drs. Thomas Hamilton, Maureen Murphy and Julia Pimkina for suggestions and helpful discussions. The authors are also grateful for the critical review of this manuscript by Drs. Alana O'Reilly, Andrew Godwin and Erica Golemis. DCC is supported by NIH RO1 CA136596, the Ovarian Cancer Research Fund, the Fox Chase Cancer Center Ovarian Cancer Spore (P50 CA083638), the Fox Chase Cancer Core Grant (P30 CA006927) and the Keystone Program in Personalized Risk and Prevention.

## Author details

<sup>1</sup>Women's Cancer Program, Fox Chase Cancer Center, 333 Cottman Avenue, Philadelphia, PA 19111-2497, USA. <sup>2</sup>Transgenic Facility Fox Chase Cancer Center, 333 Cottman Avenue, Philadelphia, PA 19111-2497, USA. <sup>3</sup>Department of Pathology, Fox Chase Cancer Center, 333 Cottman Avenue, Philadelphia, PA 19111-2497, USA. <sup>4</sup>Cancer Biology Program, Fox Chase Cancer Center, 333 Cottman Avenue, Philadelphia, PA 19111-2497, USA. <sup>5</sup>Department of Human and Molecular Genetics Virginia Commonwealth University School of Medicine 1220 E. Broad Street Room 7003 Richmond, VA 23298, USA.

## Authors' contributions

BAQ, FX, LB and LM conducted the studies and participated in the data analysis. XH performed oophorectomies, ovarian transplants and orthotopic implantation of tumor cells and AKS conducted the histopathological evaluation of tumor tissues. DCC conceived and designed experiments, analyzed the data and wrote the manuscript. All authors have read and approved the final manuscript.

## Competing interests

The authors declare that they have no competing interests.

Received: 13 July 2010 Accepted: 19 October 2010

Published: 19 October 2010

## References

- Jemal A, Siegel R, Ward E, Hao Y, Xu J, Thun MJ: **Cancer statistics, 2009.** *CA Cancer J Clin* 2009, **59**:225-249.
- Auersperg N, Maines-Bandiera SL, Dyck HG: **Ovarian carcinogenesis and the biology of ovarian surface epithelium.** *J Cell Physiol* 1997, **173**:261-265.
- Pothuri B, Leitao MM, Levine DA, Viale A, Olshen AB, Arroyo C, Bogomolny F, Olvera N, Lin O, Soslow RA, et al: **Genetic analysis of the early natural history of epithelial ovarian carcinoma.** *PLoS One* 5:e10358.
- Salazar H, Godwin AK, Daly MB, Laub PB, Hogan WM, Rosenblum N, Boente MP, Lynch HT, Hamilton TC: **Microscopic benign and invasive malignant neoplasms and a cancer-prone phenotype in prophylactic oophorectomies.** *J Natl Cancer Inst* 1996, **88**:1810-1820.
- Scully RE: **Pathology of ovarian cancer precursors.** *J Cell Biochem Suppl* 1995, **23**:208-218.
- Crum CP, Drapkin R, Miron A, Ince TA, Muto M, Kindelberger DW, Lee Y: **The distal fallopian tube: a new model for pelvic serous carcinogenesis.** *Curr Opin Obstet Gynecol* 2007, **19**:3-9.
- Dubeau L: **The cell of origin of ovarian epithelial tumors and the surface epithelium dogma: does the emperor have no clothes?** *Gynecol Oncol* 1999, **72**:437-442.
- Auersperg N, Maines-Bandiera S, Booth JH, Lynch HT, Godwin AK, Hamilton TC: **Expression of two mucin antigens in cultured human ovarian surface epithelium: influence of a family history of ovarian cancer.** *Am J Obstet Gynecol* 1995, **173**:558-565.
- Godwin AK, Testa JR, Handel LM, Liu Z, Vanderveer LA, Tracey PA, Hamilton TC: **Spontaneous transformation of rat ovarian surface epithelial cells: association with cytogenetic changes and implications of repeated ovulation in the etiology of ovarian cancer.** *J Natl Cancer Inst* 1992, **84**:592-601.
- Roby KF, Taylor CC, Sweetwood JP, Cheng Y, Pace JL, Tawfik O, Persons DL, Smith PG, Terranova PF: **Development of a syngeneic mouse model for events related to ovarian cancer.** *Carcinogenesis* 2000, **21**:585-591.
- Chen T, Pengetnze Y, Taylor CC: **Src inhibition enhances paclitaxel cytotoxicity in ovarian cancer cells by caspase-9-independent activation of caspase-3.** *Mol Cancer Ther* 2005, **4**:217-224.
- George JA, Chen T, Taylor CC: **SRC tyrosine kinase and multidrug resistance protein-1 inhibitions act independently but cooperatively to restore paclitaxel sensitivity to paclitaxel-resistant ovarian cancer cells.** *Cancer Res* 2005, **65**:10381-10388.
- Greenaway J, Henkin J, Lawler J, Moorehead R, Petrik J: **ABT-510 induces tumor cell apoptosis and inhibits ovarian tumor growth in an orthotopic, syngeneic model of epithelial ovarian cancer.** *Mol Cancer Ther* 2009, **8**:64-74.

14. Greenaway J, Moorehead R, Shaw P, Petrik J: **Epithelial-stromal interaction increases cell proliferation, survival and tumorigenicity in a mouse model of human epithelial ovarian cancer.** *Gynecol Oncol* 2008, **108**:385-394.
15. Hagemann T, Robinson SC, Thompson RG, Charles K, Kulbe H, Balkwill FR: **Ovarian cancer cell-derived migration inhibitory factor enhances tumor growth, progression, and angiogenesis.** *Mol Cancer Ther* 2007, **6**:1993-2002.
16. Pengetnze Y, Steed M, Roby KF, Terranova PF, Taylor CC: **Src tyrosine kinase promotes survival and resistance to chemotherapeutics in a mouse ovarian cancer cell line.** *Biochem Biophys Res Commun* 2003, **309**:377-383.
17. Roby KF, Niu F, Rajewski RA, Decedue C, Subramaniam B, Terranova PF: **Syngeneic mouse model of epithelial ovarian cancer: effects of nanoparticulate paclitaxel, Nanotax.** *Adv Exp Med Biol* 2008, **622**:169-181.
18. Zhang L, Yang N, Garcia JR, Mohamed A, Benencia F, Rubin SC, Allman D, Coukos G: **Generation of a syngeneic mouse model to study the effects of vascular endothelial growth factor in ovarian carcinoma.** *Am J Pathol* 2002, **161**:2295-2309.
19. Risma KA, Clay CM, Nett TM, Wagner T, Yun J, Nilson JH: **Targeted overexpression of luteinizing hormone in transgenic mice leads to infertility, polycystic ovaries, and ovarian tumors.** *Proc Natl Acad Sci USA* 1995, **92**:1322-1326.
20. Keri RA, Lozada KL, Abdul-Karim FW, Nadeau JH, Nilson JH: **Luteinizing hormone induction of ovarian tumors: oligogenic differences between mouse strains dictates tumor disposition.** *Proc Natl Acad Sci USA* 2000, **97**:383-387.
21. Rahman NA, Huhtaniemi IT: **Ovarian tumorigenesis in mice transgenic for murine inhibin alpha subunit promoter-driven Simian Virus 40 T-antigen: ontogeny, functional characteristics, and endocrine effects.** *Biol Reprod* 2001, **64**:1122-1130.
22. Kumar TR, Palapattu G, Wang P, Woodruff TK, Boime I, Byrne MC, Matzuk MM: **Transgenic models to study gonadotropin function: the role of follicle-stimulating hormone in gonadal growth and tumorigenesis.** *Mol Endocrinol* 1999, **13**:851-865.
23. Kananen K, Markkula M, Rainio E, Su JG, Hsueh AJ, Huhtaniemi IT: **Gonadal tumorigenesis in transgenic mice bearing the mouse inhibin alpha-subunit promoter/simian virus T-antigen fusion gene: characterization of ovarian tumors and establishment of gonadotropin-responsive granulosa cell lines.** *Mol Endocrinol* 1995, **9**:616-627.
24. Dutertre M, Gouedard L, Xavier F, Long WQ, di Clemente N, Picard JY, Rey R: **Ovarian granulosa cell tumors express a functional membrane receptor for anti-Mullerian hormone in transgenic mice.** *Endocrinology* 2001, **142**:4040-4046.
25. Orsulic S, Li Y, Soslow RA, Vitale-Cross LA, Gutkind JS, Varmus HE: **Induction of ovarian cancer by defined multiple genetic changes in a mouse model system.** *Cancer Cell* 2002, **1**:53-62.
26. Xing D, Orsulic S: **A mouse model for the molecular characterization of brca1-associated ovarian carcinoma.** *Cancer Res* 2006, **66**:8949-8953.
27. Connolly DC, Bao R, Nikitin AY, Stephens KC, Poole TW, Hua X, Harris SS, Vanderhyden BC, Hamilton TC: **Female mice chimeric for expression of the SV40 TAg under control of the MISIR promoter develop epithelial ovarian cancer.** *Cancer Research* 2003, **63**:1389-1397.
28. Hensley H, Quinn BA, Wolf RL, Litwin SL, Mabuchi S, Williams SJ, Williams C, Hamilton TC, Connolly DC: **Magnetic Resonance Imaging for Detection and Determination of Tumor Volume in a Genetically Engineered Mouse Model of Ovarian Cancer.** *Cancer Biol Ther* 2007, **6**.
29. Dinulescu DM, Ince TA, Quade BJ, Shafer SA, Crowley D, Jacks T: **Role of K-ras and Pten in the development of mouse models of endometriosis and endometrioid ovarian cancer.** *Nat Med* 2005, **11**:63-70.
30. Flesken-Nikitin A, Choi KC, Eng JP, Schmidt EN, Nikitin AY: **Induction of carcinogenesis by concurrent inactivation of p53 and Rb1 in the mouse ovarian surface epithelium.** *Cancer Res* 2003, **63**:3459-3463.
31. Wu R, Hendrix-Lucas N, Quick R, Zhai Y, Schwartz DR, Akyol A, Hanash S, Misek DE, Katabuchi H, Williams BO, et al: **Mouse model of human ovarian endometrioid adenocarcinoma based on somatic defects in the Wnt/beta-catenin and PI3K/Pten signaling pathways.** *Cancer Cell* 2007, **11**:321-333.
32. Clark-Knowles KV, Garson K, Jonkers J, Vanderhyden BC: **Conditional inactivation of Brca1 in the mouse ovarian surface epithelium results in an increase in preneoplastic changes.** *Exp Cell Res* 2007, **313**:133-145.
33. Clark-Knowles KV, Senterman MK, Collins O, Vanderhyden BC: **Conditional inactivation of Brca1, p53 and Rb in mouse ovaries results in the development of leiomyosarcomas.** *PLoS One* 2009, **4**:e8534.
34. Quinn BA, Brake T, Hua X, Baxter-Jones K, Litwin S, Ellenson LH, Connolly DC: **Induction of ovarian leiomyosarcomas in mice by conditional inactivation of Brca1 and p53.** *PLoS One* 2009, **4**:e8404.
35. Aunoble B, Sanches R, Didier E, Bignon YJ: **Major oncogenes and tumor suppressor genes involved in epithelial ovarian cancer (review).** *Int J Oncol* 2000, **16**:567-576.
36. Feeley KM, Wells M: **Precursor lesions of ovarian epithelial malignancy.** *Histopathology* 2001, **38**:87-95.
37. Dodson MK, Cliby WA, Xu HJ, DeLacey KA, Hu SX, Keeney GL, Li J, Podratz KC, Jenkins RB, Benedict WF: **Evidence of functional RB protein in epithelial ovarian carcinomas despite loss of heterozygosity at the RB locus.** *Cancer Res* 1994, **54**:610-613.
38. Farley J, Smith LM, Darcy KM, Sobel E, O'Connor D, Henderson B, Morrison LE, Birrer MJ: **Cyclin E expression is a significant predictor of survival in advanced, suboptimally debulked ovarian epithelial cancers: a Gynecologic Oncology Group study.** *Cancer Res* 2003, **63**:1235-1241.
39. Hashiguchi Y, Tsuda H, Yamamoto K, Inoue T, Ishiko O, Ogita S: **Combined analysis of p53 and RB pathways in epithelial ovarian cancer.** *Hum Pathol* 2001, **32**:988-996.
40. Havrilesky LJ, Berchuck A: **Molecular Alterations in Sporadic Ovarian Cancer.** In *Ovarian Cancer*. Edited by: Rubin SC, Sutton GP. Philadelphia: Lippincott Williams, Second 2001:23-42.
41. Tsuda H, Bandera CA, Birrer MJ, Hashiguchi Y, Berkowitz RS, Mok SC: **Cyclin E amplification and overexpression in clear cell adenocarcinoma of the ovary.** *Oncology* 2004, **67**:291-299.
42. Arroyo JD, Hahn WC: **Involvement of PP2A in viral and cellular transformation.** *Oncogene* 2005, **24**:7746-7755.
43. Altomare DA, Wang HQ, Skele KL, De Rienzo A, Klein-Szanto AJ, Godwin AK, Testa JR: **AKT and mTOR phosphorylation is frequently detected in ovarian cancer and can be targeted to disrupt ovarian tumor cell growth.** *Oncogene* 2004, **23**:5853-5857.
44. Daikoku T, Tranguch S, Trofimova IN, Dinulescu DM, Jacks T, Nikitin AY, Connolly DC, Dey SK: **Cyclooxygenase-1 is overexpressed in multiple genetically engineered mouse models of epithelial ovarian cancer.** *Cancer Res* 2006, **66**:2527-2531.
45. Mabuchi S, Altomare DA, Connolly DC, Klein-Szanto A, Litwin S, Hoelzle MK, Hensley HH, Hamilton TC, Testa JR: **RAD001 (Everolimus) delays tumor onset and progression in a transgenic mouse model of ovarian cancer.** *Cancer Res* 2007, **67**:2408-2413.
46. Pieretti-Vanmarcke R, Donahoe PK, Pearsall LA, Dinulescu DM, Connolly DC, Halpern EF, Seiden MV, MacLaughlin DT: **Mullerian Inhibiting Substance enhances subclinical doses of chemotherapeutic agents to inhibit human and mouse ovarian cancer.** *Proc Natl Acad Sci USA* 2006, **103**:17426-17431.
47. Pieretti-Vanmarcke R, Donahoe PK, Szotek P, Manganaro T, Lorenzen MK, Lorenzen J, Connolly DC, Halpern EF, MacLaughlin DT: **Recombinant human Mullerian inhibiting substance inhibits long-term growth of MIS type II receptor-directed transgenic mouse ovarian cancers in vivo.** *Clin Cancer Res* 2006, **12**:1593-1598.
48. Szotek PP, Pieretti-Vanmarcke R, Masiakos PT, Dinulescu DM, Connolly D, Foster R, Dombkowski D, Preffer F, MacLaughlin DT, Donahoe PK: **Ovarian cancer side population defines cells with stem cell-like characteristics and Mullerian Inhibiting Substance responsiveness.** *Proc Natl Acad Sci USA* 2006, **103**:11154-11159.
49. Connolly DC, Hensley HH: **Xenograft and Transgenic Mouse Models of Epithelial Ovarian Cancer and Non-Invasive Imaging Modalities to Monitor Ovarian Tumor Growth In Situ: Applications in Evaluating Novel Therapeutic Agents.** *Current Protoc Pharmacol* 2009, **45**:14.12.11-14.12.36.
50. Wettstein PJ, Jewett L, Faas S, Brinster RL, Knowles BB: **SV40 T-antigen is a histocompatibility antigen of SV40-transgenic mice.** *Immunogenetics* 1988, **27**:436-441.
51. Ali SH, DeCaprio JA: **Cellular transformation by SV40 large T antigen: interaction with host proteins.** *Semin Cancer Biol* 2001, **11**:15-23.
52. Pipas JM, Levine AJ: **Role of T antigen interactions with p53 in tumorigenesis.** *Semin Cancer Biol* 2001, **11**:23-30.
53. Pinter O, Beda Z, Csaba Z, Gerendai I: **Differences in the onset of puberty in selected inbred mouse strains.** *Endocrine Abstracts* 2007, **14**:P617.

54. Mintz B, Silvers WK: **Transgenic mouse model of malignant skin melanoma.** *Proc Natl Acad Sci USA* 1993, **90**:8817-8821.
55. Greenberg NM, DeMayo F, Finegold MJ, Medina D, Tilley WD, Aspinall JO, Cunha GR, Donjacour AA, Matusik RJ, Rosen JM: **Prostate cancer in a transgenic mouse.** *Proc Natl Acad Sci USA* 1995, **92**:3439-3443.
56. Curran MA, Allison JP: **Tumor vaccines expressing flt3 ligand synergize with ctla-4 blockade to reject preimplanted tumors.** *Cancer Res* 2009, **69**:7747-7755.
57. Fasso M, Waitz R, Hou Y, Rim T, Greenberg NM, Shastri N, Fong L, Allison JP: **SPAS-1 (stimulator of prostatic adenocarcinoma-specific T cells)/SH3GLB2: A prostate tumor antigen identified by CTLA-4 blockade.** *Proc Natl Acad Sci USA* 2008, **105**:3509-3514.
58. Hurwitz AA, Foster BA, Kwon ED, Truong T, Choi EM, Greenberg NM, Burg MB, Allison JP: **Combination immunotherapy of primary prostate cancer in a transgenic mouse model using CTLA-4 blockade.** *Cancer Res* 2000, **60**:2444-2448.
59. Kwon ED, Foster BA, Hurwitz AA, Madias C, Allison JP, Greenberg NM, Burg MB: **Elimination of residual metastatic prostate cancer after surgery and adjunctive cytotoxic T lymphocyte-associated antigen 4 (CTLA-4) blockade immunotherapy.** *Proc Natl Acad Sci USA* 1999, **96**:15074-15079.
60. Kwon ED, Hurwitz AA, Foster BA, Madias C, Feldhaus AL, Greenberg NM, Burg MB, Allison JP: **Manipulation of T cell costimulatory and inhibitory signals for immunotherapy of prostate cancer.** *Proc Natl Acad Sci USA* 1997, **94**:8099-8103.
61. Hanahan D: **Heritable formation of pancreatic beta-cell tumours in transgenic mice expressing recombinant insulin/simian virus 40 oncogenes.** *Nature* 1985, **315**:115-122.
62. Chen J, Tobin GJ, Pipas JM, Van Dyke T: **T-antigen mutant activities in vivo: roles of p53 and pRB binding in tumorigenesis of the choroid plexus.** *Oncogene* 1992, **7**:1167-1175.
63. Maroulakou IG, Anver M, Garrett L, Green JE: **Prostate and mammary adenocarcinoma in transgenic mice carrying a rat C3(1) simian virus 40 large tumor antigen fusion gene.** *Proc Natl Acad Sci USA* 1994, **91**:11236-11240.
64. Kasper S, Sheppard PC, Yan Y, Pettigrew N, Borowsky AD, Prins GS, Dodd JG, Duckworth ML, Matusik RJ: **Development, progression, and androgen-dependence of prostate tumors in probasin-large T antigen transgenic mice: a model for prostate cancer.** *Lab Invest* 1998, **78**:i-xv.
65. Grippo PJ, Sandgren EP: **Highly invasive transitional cell carcinoma of the bladder in a simian virus 40 T-antigen transgenic mouse model.** *Am J Pathol* 2000, **157**:805-813.
66. Chailley-Heu B, Rambaud C, Barlier-Mur AM, Galateau-Salle F, Perret C, Capron F, Lacaze-Masmonteil T: **A model of pulmonary adenocarcinoma in transgenic mice expressing the simian virus 40 T antigen driven by the rat Calbindin-D9K (CaBP9K) promoter.** *J Pathol* 2001, **195**:482-489.
67. Bergers G, Brekken R, McMahon G, Vu TH, Itoh T, Tamaki K, Tanzawa K, Thorpe P, Itohara S, Werb Z, Hanahan D: **Matrix metalloproteinase-9 triggers the angiogenic switch during carcinogenesis.** *Nat Cell Biol* 2000, **2**:737-744.
68. Bergers G, Javaherian K, Lo KM, Folkman J, Hanahan D: **Effects of angiogenesis inhibitors on multistage carcinogenesis in mice.** *Science* 1999, **284**:808-812.
69. Casanovas O, Hicklin DJ, Bergers G, Hanahan D: **Drug resistance by evasion of antiangiogenic targeting of VEGF signaling in late-stage pancreatic islet tumors.** *Cancer Cell* 2005, **8**:299-309.
70. Inoue M, Hager JH, Ferrara N, Gerber HP, Hanahan D: **VEGF-A has a critical, nonredundant role in angiogenic switching and pancreatic beta cell carcinogenesis.** *Cancer Cell* 2002, **1**:193-202.
71. Nozawa H, Chiu C, Hanahan D: **Infiltrating neutrophils mediate the initial angiogenic switch in a mouse model of multistage carcinogenesis.** *Proc Natl Acad Sci USA* 2006, **103**:12493-12498.
72. Du YC, Lewis BC, Hanahan D, Varmus H: **Assessing tumor progression factors by somatic gene transfer into a mouse model: Bcl-xL promotes islet tumor cell invasion.** *PLoS Biol* 2007, **5**:2255-2269.
73. Deeb KK, Michalowska AM, Yoon CY, Krummery SM, Hoenerhoff MJ, Kavanaugh C, Li MC, Demayo FJ, Linnoila I, Deng CX, *et al*: **Identification of an integrated SV40 T/t-antigen cancer signature in aggressive human breast, prostate, and lung carcinomas with poor prognosis.** *Cancer Res* 2007, **67**:8065-8080.
74. Toyoshima M, Tanaka Y, Matsumoto M, Yamazaki M, Nagase S, Sugamura K, Yaegashi N: **Generation of a syngeneic mouse model to study the intraperitoneal dissemination of ovarian cancer with in vivo luciferase imaging.** *Luminescence* 2009, **24**:324-331.
75. Said N, Socha MJ, Olearczyk JJ, Elmarakby AA, Imig JD, Motamed K: **Normalization of the ovarian cancer microenvironment by SPARC.** *Mol Cancer Res* 2007, **5**:1015-1030.

doi:10.1186/1757-2215-3-24

Cite this article as: Quinn *et al*: Development of a syngeneic mouse model of epithelial ovarian cancer. *Journal of Ovarian Research* 2010 3:24.

Submit your next manuscript to BioMed Central and take full advantage of:

- Convenient online submission
- Thorough peer review
- No space constraints or color figure charges
- Immediate publication on acceptance
- Inclusion in PubMed, CAS, Scopus and Google Scholar
- Research which is freely available for redistribution

Submit your manuscript at  
[www.biomedcentral.com/submit](http://www.biomedcentral.com/submit)

