

In silico (computed) modelling of doses and dosing regimens associated with morphine levels above international legal driving limits

Jason W Boland¹ , Miriam Johnson¹ , Diana Ferreira² and David J Berry³

Palliative Medicine
2018, Vol. 32(7) 1222–1232
© The Author(s) 2018



Reprints and permissions:
sagepub.co.uk/journalsPermissions.nav
DOI: 10.1177/0269216318773956
journals.sagepub.com/home/pmj



Abstract

Background: Morphine can cause central nervous system side effects which impair driving skills. The legal blood morphine concentration limit for driving is 20 µg/L in France/Poland/Netherlands and 80 µg/L in England/Wales. There is no guidance as to the morphine dose leading to this concentration.

Aim: The in silico (computed) relationship of oral morphine dose and plasma concentration was modelled to provide dose estimates for a morphine plasma concentration above 20 and 80 µg/L in different patient groups.

Design: A dose–concentration model for different genders, ages and oral morphine formulations, validated against clinical pharmacokinetic data, was generated using Simcyp[®], a population-based pharmacokinetic simulator.

Setting/participants: Healthy Northern European population parameters were used with age, gender and renal function being varied in the different simulation groups. In total, 36,000 simulated human subjects (100 per modelled group of different ages and gender) received repeated simulated morphine dosing with modified-release or immediate-release formulations.

Results: Older age, women, modified-release formulation and worse renal function were associated with higher plasma concentrations. Across all groups, morphine doses below 20 mg/day were unlikely to result in a morphine plasma concentration above 20 µg/L; this was 80 mg/day with the 80 µg/L limit.

Conclusion: This novel study provides predictions of the in silico (computed) dose–concentration relationship for international application. Individualised morphine prescribing decisions by clinicians must be informed by clinical judgement considering the individual patient’s level of impairment and insight irrespective of the blood morphine concentration as people who have impaired driving will be breaking the law. Taking into account expected morphine concentrations enables improved individualised decision making.

Keywords

Driving, opioids, opiates, morphine, dose-concentration, in silico modelling

What is already known on the topic?

- Morphine can cause central nervous system side effects which impair driving.
- The blood morphine concentration driving legal limit is 20 µg/L in France/Poland/Netherlands and 80 µg/L in England/Wales.
- There is no dose–concentration guidance as to what morphine dose would lead to these concentrations.

What this paper adds?

- For the same oral morphine dose, older age, women, modified-release formulation and worse renal function are associated with higher morphine plasma concentrations.

¹Wolfson Palliative Care Research Centre, Hull York Medical School, University of Hull, Hull, UK

²Flinders University, Bedford Park, SA, Australia

³Durham University, Stockton-on-Tees, UK

Corresponding author:

Jason W Boland, Wolfson Palliative Care Research Centre, Hull York Medical School, University of Hull, Hull HU6 7RX, UK.
Email: jason.boland@hyms.ac.uk

- With normal renal function, <20 mg/day morphine is unlikely to result in a morphine plasma concentration above 20 µg/L; this is <80 mg/day morphine for the 20 µg/L limit.

Implications for practice, theory or policy

- The morphine dose–concentration relationship helps inform individualised prescribing decisions by clinicians for people needing morphine.
- Clinical judgement considering the individual patient’s level of impairment and insight for any plasma concentration is needed.

Introduction

Morphine is commonly prescribed for pain management and can cause central nervous system harms such as cognitive and psychomotor impairment which can have a negative impact on driving skills.^{1,2} An offence of driving with certain controlled drugs above specified blood limits came into force in England and Wales in March 2015.^{3,4} This includes a 80-µg/L morphine limit at the time of testing.^{3,4} It gives police powers to arrest and test people suspected of driving with higher than specified blood levels of certain controlled drugs. The 80 µg/L limit was established after taking into account epidemiological and experimental data of blood morphine concentrations of individuals and impaired driving.⁵ However, the legal blood concentration of morphine varies across European countries from 9 µg/L (Norway), to 20 µg/L (France, Poland, Netherlands) to 80 µg/L (England/Wales).^{5,6} In the United States, driving on therapeutic opioids varies between states.⁷ Arizona, Indiana, Iowa, Minnesota and North Carolina have statutory defences for drivers taking prescription opioids. In Maine, South Dakota and Wyoming, driving while taking prescription drugs known to impair driving is prohibited, even if driving is not affected.⁷ In Australia, people taking opioids are not allowed to drive if their driving is impaired, irrespective of blood levels. For unimpaired drivers, in Australia and New Zealand, no blood concentration cut-off applies.^{8,9} This heterogeneity in laws within and between countries illustrates that a concentration–impairment relationship is not established. National and international medical recommendations also reflect this uncertainty. In a UK National Health Service document, oral morphine equivalent doses above 220 mg/day were considered probably not safe to drive.¹⁰ The Royal College of Anaesthetists states that doses around 200 mg/day could be as dangerous as having borderline illegal driving blood alcohol levels.¹¹ The American College of Occupational and Environmental Medicine states that acute and chronic opioid use is not recommended for patients who operate motor vehicles.¹²

Anyone driving in England and Wales with blood concentrations above 80 µg/L will be breaking the law, whether their driving was impaired or not. However, people taking

morphine for medical reasons may have a statutory ‘medical defence’ if they have blood concentrations greater than the legal limit.^{3,4} For this defence to be valid, their driving must be *unimpaired*, the drug must be prescribed, supplied/sold to treat a medical problem and taken in accordance with prescriber instructions (or the medicine information leaflet). Written evidence may be required. Despite the clear guidance on blood concentrations, there is no guidance relating to the dose which would equate to being over the specified limits.³ A Swedish study of 2029 apprehended drivers showed that those individuals who had morphine detected in their blood had a mean morphine concentration of 46 µg/L (2.5 and 97.5 percentiles: 6 and 210 µg/L).¹³ This indicates that a proportion of apprehended drivers had morphine concentrations above 80 µg/L and most above 20 µg/L. Furthermore, drug-impaired driving does not necessarily relate to plasma concentration of morphine.¹³

In clinical practice, the dose of morphine which approximates to morphine blood concentrations of 20 and 80 µg/L is not known. This study aimed to model the relationship between oral morphine daily dose and plasma concentration for which the driving laws apply to help inform personalised patient decisions. In silico (computed) pharmacokinetic modelling was used to account for inter-individual variables across different ages and genders, and to detect differences between oral morphine preparations.

Methods

In silico physiology-based pharmacokinetic modelling was used to assess the plasma concentrations which relate to oral doses of immediate and modified-release morphine (MST Continus®) in order to estimate the daily dose of morphine which is likely to produce a plasma concentration of 20 and 80 µg/L. This was modelled in men and women across a range of ages. A number of software and models are available, offering different focal strengths.^{14–17}

Calculations were undertaken using Simcyp® Population-Based Simulator software (version 14; Certara™, New Jersey, USA). This software simulates absorption and metabolism in

a physiology-based modelling platform, delivering a range of dose–plasma concentrations across a diverse population.¹⁸ In silico characterises biological experiments carried out entirely on a computer, applying algorithms or computer simulations to model biological processes. These in silico techniques are widely used in such a way to model representative data from a large number of potential subjects.^{18,19} To adequately predict in vivo behaviours from in vitro data, the models use information on the human body for each ‘test’ subject, the physical chemistry of the drug molecule and the conditions of its use (dose and dosing schedule). Physical chemistry of the drug and dosing schedule were implemented based on information from the Royal Society of Chemistry’s ChemSpider, Drug Bank and dosing through the British National Formulary.^{20,21} Distribution was calculated using the minimal physiologically based pharmacokinetic (PBPK) model option with volume of distribution included as a user input of 2.9L/kg with a 27% coefficient of variance.²² To enable calculation of individual patient variability factors, multivariate models are used to ensure valid predictions of the key processes such as absorption and metabolism.^{23–25} The covariates for these processes have been previously described.^{18,26–28} In the gastrointestinal tract, Simcyp’s Advanced Dissolution Adsorption and Metabolism (ADAM) multi-compartmental models are used to represent the physiological state.^{29,30} These models use multiple mathematical ‘compartments’ (from stomach to anus) which contain a volume and flow rate, representing the physiological state. Within each of these compartments, release of the drug, interaction with the gut wall (degradation and metabolism), absorption (passive and active) and first-pass liver metabolism are considered. The model accounts for changes in liver function associated with ageing, based on the microsomal protein per gram of liver in ageing samples.³¹ Average renal function for each age group is calculated using the Cockcroft and Gault equation.³²

The ‘healthy Northern European population’ was used for this study, with all model values retained except for age, gender and renal function. These values were altered to ascertain the dose–pharmacokinetic relationships for different groups.

The pharmacokinetic model for morphine was validated in two stages. First, parameters were developed to match maximum concentration (C_{max}), time to achieve maximum concentration (T_{max}), area under the curve (AUC) and plasma/time shape parameters, with clearance and volume of distribution used from the mean of reported data.^{22,33–36} Second, the predicted and measured plasma concentrations across the dose range at steady state were compared.^{35–37} This represented the best available population data for the dosing of morphine with slight over prediction being built into the model to ensure conservative clinical application (Figure 1).

Dosing intervals were selected due to clinical relevance, with a 12-h interval used for modified-release dosing and a 6-h interval for immediate-release dosing. Although

immediate-release dosing can occur at 4-hourly intervals, often the dose is taken less than six times a day. Furthermore, the same dose at 4- and 6-hourly dosing intervals resulted in comparable mean maximum plasma concentrations at steady state, with the 6-hourly dose leading to an increased chance of being above 80 µg/L and thus would provide the more conservative guidance (Figure 2).

Age, gender and renal function parameters were altered in the model to explore the dose–pharmacokinetic relationships for different groups of people. For both men and women, age ranges of 18–90 years were used, divided into 18–40 and then in 10-year intervals. The effect of renal failure on dose–concentration relationship was evaluated by adjusting renal function parameters in line with the National Kidney Foundation classification of glomerular filtration rate (GFR) for mild (70 mL/min/1.73 m²), moderate (50 mL/min/1.73 m²) and severe (20 mL/min/1.73 m²) renal failure.³⁸

Sampling intervals were 15 min for the immediate-release preparation model and 40 min for the modified-release model, for at least 7 days. Prediction of the amount of time a person is likely to be over the limit is based on the number of sampled points within a simulated 24-h period that were over 80 µg/L (Figure 2). All data points above 80 µg/L (Figure 2) would be considered as time over the legal limit. Such data would not be captured from the mean plasma concentrations (Figure 2), which are below the legal limit and if used alone would wrongly classify the patient as under the legal limit at this dose.

Plasma concentration over time was modelled for morphine doses between 5–200 mg twice-daily in 5 mg increments to 100 mg, 25 mg intervals thereafter; and 10–200 mg four-times daily in 10 mg intervals, for modified and immediate-release oral preparations, respectively. Each dose of each formulation was simulated on 100 individuals for at least 7 days to ensure steady state was reached. Mean data from the 100 individuals were used to determine the dose to plasma concentration relationship. Individual datasets can be found in the online supplement. These data were then analysed to determine the number of hours which those individuals with the highest C_{max} response were over the legal limit (20 or 80 µg/L) for a given dose. This was achieved by use of the 95th percentile data from each sub-population, with these data reported in Figures 3, 4 and Supplementary Figures 1 and 2 – as the aim of this work was to determine doses conveying the highest risk of a patient being above the legal limit.

The law states the legal morphine concentration in blood. Morphine levels between whole blood and plasma have previously been reported to correlate in a linear fashion with a relationship close to 1.02.³⁹

Results

In silico modelling for 100 ‘men’ and 100 ‘women’ for each age range and dose gives a *mean* of the oral morphine dose

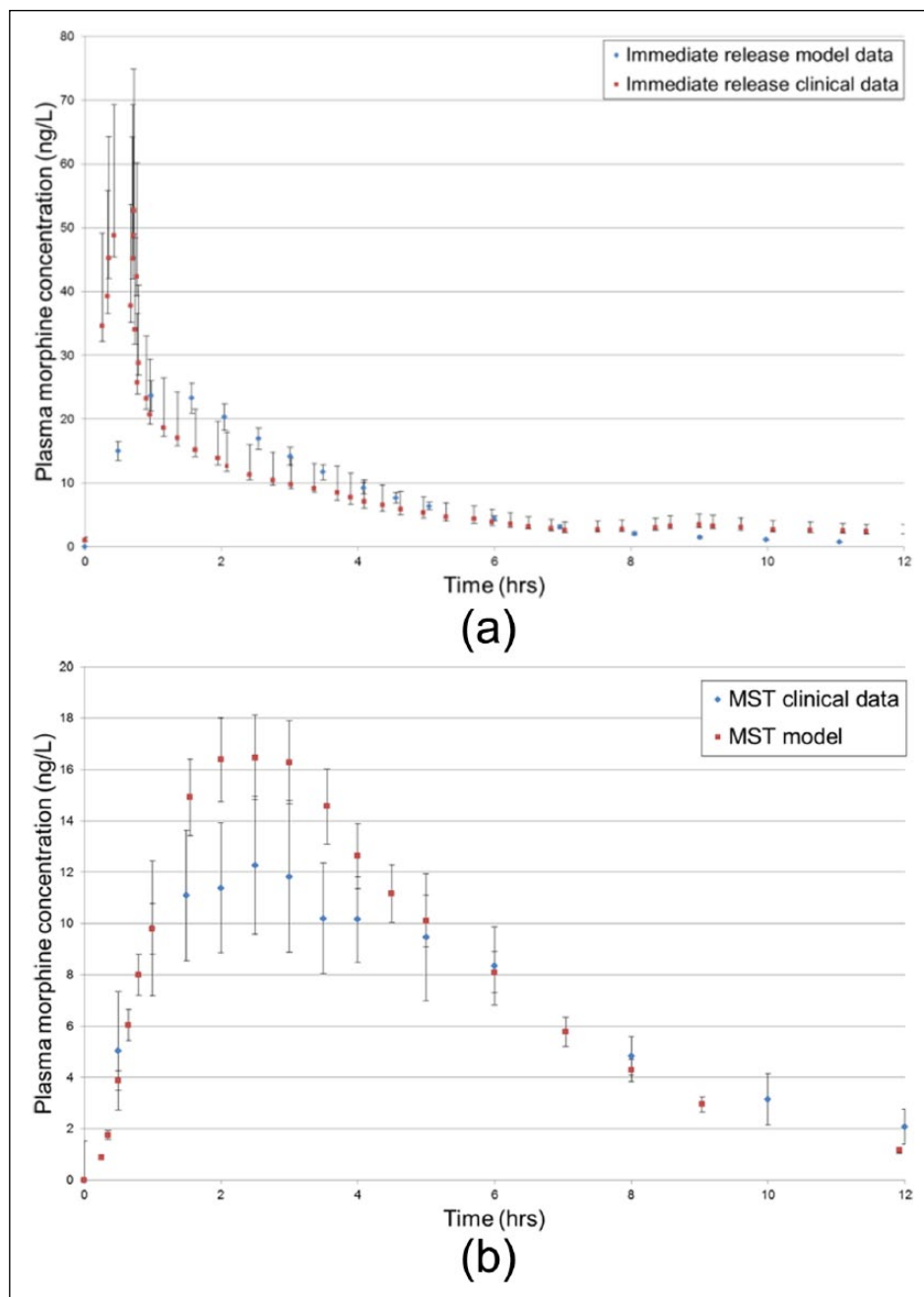


Figure 1. Model validation via comparison of mean data from clinical trials^{35–37} of (a) 20 mg immediate-release oral formulation and the in silico model in healthy diverse individuals and (b) 30 mg modified-release morphine tablets and the in silico model in healthy diverse individuals. Error bars show 10% standard error in the model and studied variance within clinical subjects in the trial data.

concentration relationship. The dose precision within the data is limited to the order of 10–20 mg dosing intervals, as per the axis of the charts. From this, it is possible to determine, in each population, the dose which equates to a morphine plasma concentration (Figure 3 and Supplementary Figure 1).

The dose which equates to the legal morphine plasma concentration in France, Poland, Netherlands (20 $\mu\text{g/L}$) and England/Wales (80 $\mu\text{g/L}$) can be determined (Figure 3 and Supplementary Figure 1). The morphine plasma

concentration has also been represented by the time a person is likely to be over 80 $\mu\text{g/L}$ (Figure 4 and Supplementary Figure 2). This is shown at steady state for people of different ages, genders, morphine formulations (assuming normal renal and hepatic function for that age/gender) and renal failure (Figure 4 and Supplementary Figure 2).

Mild renal failure did not significantly affect morphine concentrations, with reduced hepatocyte concentrations showing a greater impact – included within modelling of

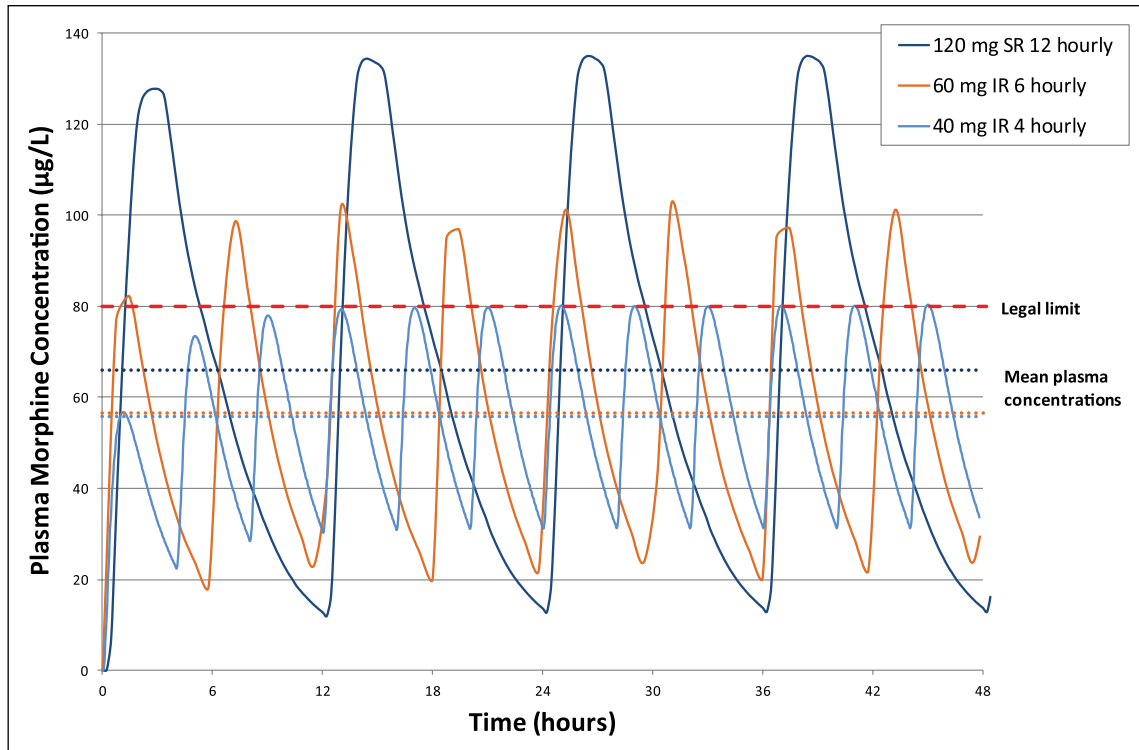


Figure 2. Comparison of 240mg daily dosing and its effect on time spent over the legal limit for 40 mg 4-hourly, 60 mg 6-hourly, immediate-release and 120mg 12-hourly modified-release oral morphine in the 70- to 80-year-old female group, also displayed is the 80 µg/L England and Wales legal limit and mean plasma concentration.

the older age groups. As morphine is renally excreted, increasing severity of renal failure increased the duration of the morphine plasma concentration being above 20 or 80 µg/L; this was especially so for immediate-release morphine (Supplementary Figures 1 and 2).

Older age, women and poor renal function were associated with higher plasma concentrations (Figures 3 and 4; Table 1).

Discussion

Using *in silico* modelling, this study estimates a dose–plasma concentration relationship in the context of the legal morphine limit, taking into account gender, age, renal function and morphine preparation. Table 1 presents a clinical guide to estimate the dose–plasma concentration likelihood in terms of exceeding the England/Wales legal blood morphine driving limit of 80 and 20 µg/L in France, Poland and Netherlands. Older age (especially above 70 years of age), women, modified-release morphine formulation and worsening renal function were associated with higher plasma concentrations. These modelling data give an approximation of the morphine dose, across a range of situations, which would likely lead to a morphine plasma concentration of ≥ 20 or 80 µg/L. The model does not consider specific diseases, how other factors and other drugs affect metabolism and cognition and how cognition

itself relates to safe driving. This must be determined by the clinician and patient, including assessment of the patient's own perspective of their cognitive performance and ability to drive at that instance.⁴⁰

In patients with cancer pain, daily morphine doses in studies were mostly between 100 and 250 mg but ranged from 25 to 2000 mg.⁴¹ This indicates that many patients will be on morphine doses that, according to our model, could lead to a morphine plasma concentration above 20 and even 80 µg/L. This is also the case for patients on opioids for non-cancer pain, where 19% (n=455) were on over 200 mg morphine equivalent/day,⁴² and opioid-dependent patients being treated with morphine (n=211), mean daily dose 791 ± 233 mg/day.⁴³

The model shows that compared with 12-hourly modified-release morphine, higher daily doses of 6-hourly immediate-release morphine are needed to achieve a morphine plasma concentration above 20 or 80 µg/L. This is because time over 20 and 80 µg/L is the main outcome, rather than the mean plasma concentration (which would not detect people at risk of being above 20 or 80 µg/L; Figure 2). Due to absorption differences, immediate-release morphine formulations produce a higher C_{max} for a shorter period compared to equivalent doses of modified release. Although equivalent doses of modified-release morphine were associated with higher plasma concentrations, the concentration oscillations associated with repeated immediate-release administration

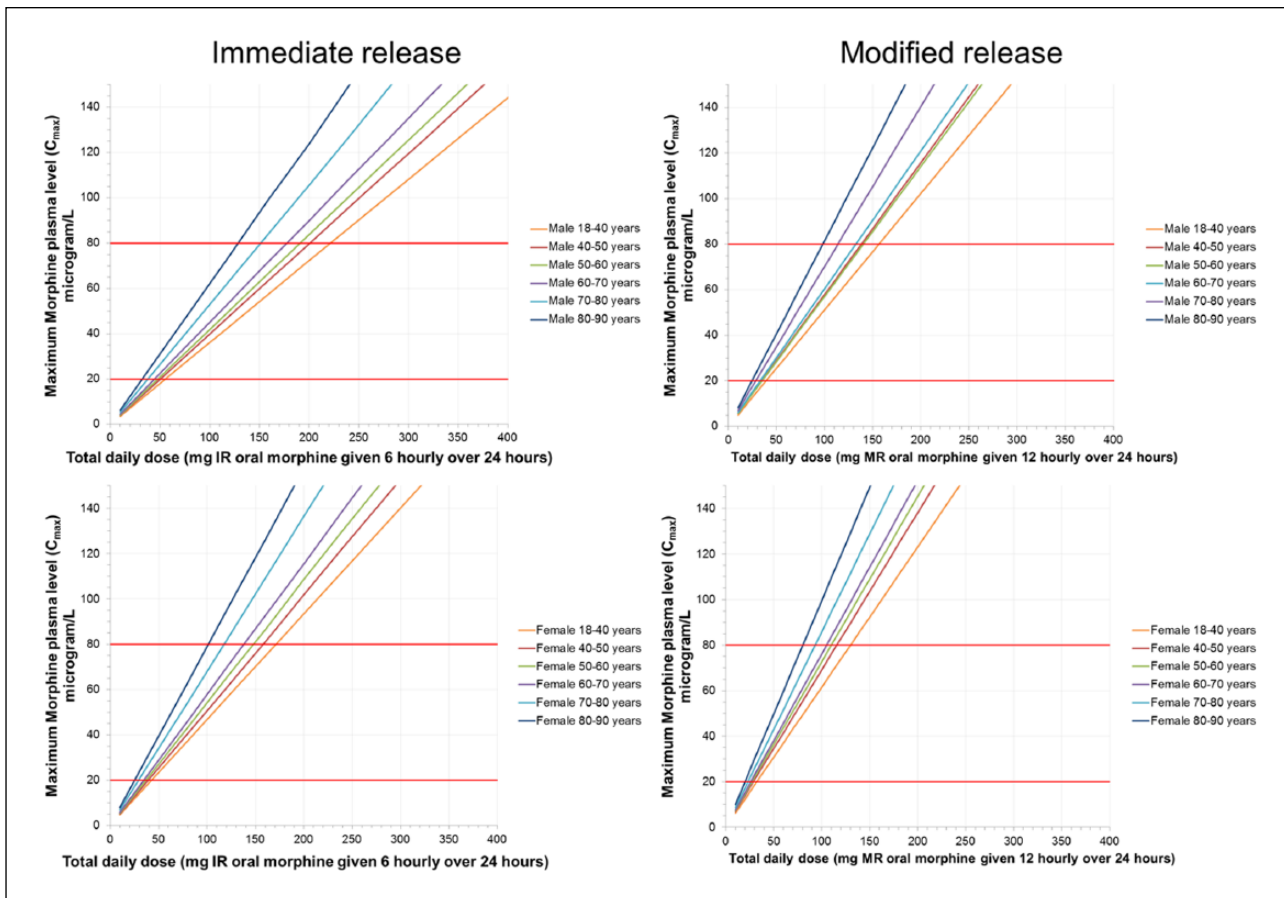


Figure 3. The maximum morphine concentration (C_{max}) is related to the daily morphine dose, in men (top) and women (bottom) divided into ages, taking different doses of immediate-release (left) and modified-release (right) morphine. The red lines represent the legal plasma levels in France, Poland, Netherlands (20 µg/L) and England/Wales (80 µg/L). Due to population variance, accuracy is only within the 10–20mg dosage range presented on the scale bars; the 95th percentile data are presented here as a worst case scenario.

might have a detrimental effect on skills required for driving.^{44–46} The modified-release model was for MST Continus.

In the model, older people, particularly above 70 years old, have a higher morphine plasma concentration for a given morphine dose. This is because as age increases, renal and hepatic function deteriorates (although this may remain within the normal range for the age group) and muscle mass reduces. In the renal failure model, estimated GFR is decreased, increasing the plasma concentration of morphine. Although mild renal failure did not affect morphine concentrations, which is expected when considering morphine concentrations alone (i.e. not the metabolites due to its high water solubility).⁴⁷ Due to the higher C_{max} in modified-release preparations, the time above 80 µg/L is differently affected in modified-release versus immediate-release preparations, although the proportional change is comparable for both preparation types. Women have a higher plasma concentration from a given dose compared to men due to proportionally smaller bodies and associated organs used for

metabolism and clearance of morphine (liver and kidneys).⁴⁸

As pain might have a detrimental effect on driving,^{49,50} it is important this is well managed and appropriate analgesics are not stopped.

Strengths and limitations

This study used *in silico* techniques to correlate morphine dose to plasma concentration. Age, gender, renal function and morphine formulation have been modelled for. The strength of PBPK modelling is that 36,000 simulated subjects at different ages and gender were simulated to receive repeated morphine dosing with both modified-release and immediate-release morphine formulations. The model has been shown to correlate with dose–concentration responses to *in vivo* study data.^{34,35,51–54} However, our model predicts higher plasma concentrations for a given morphine dose compared to *in vivo* data due to cautious model preparation to ensure that doses

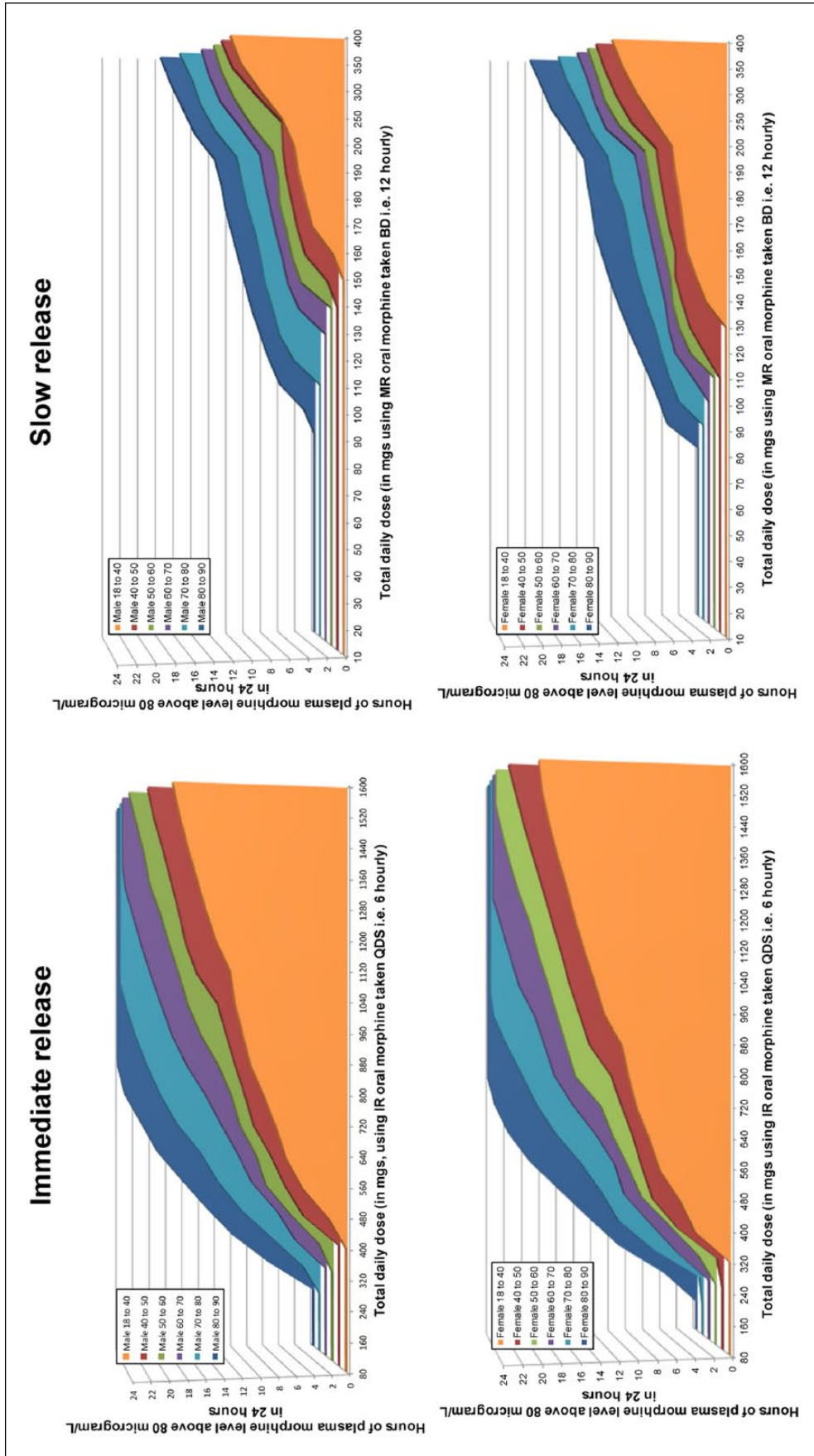


Figure 4. The number of hours per day plasma levels will be above 80 µg/L in men (top) and women (bottom) divided into ages, taking different doses of immediate-release (left) and modified-release (right) morphine. The 95th percentile data are presented here as a worst case scenario. The increments of immediate-release and modified-release dosing are not the same and are non-linear.

Table 1. Estimated daily morphine doses below the legal driving limits.

Legal limit	20 µg/L				80 µg/L			
	Total daily dose (mg) (given as QDS IR)		Total daily dose (mg) (given as BD MR)		Total daily dose (mg) (given as QDS IR)		Total daily dose (mg) (given as BD MR)	
Age (years)	Men	Women	Men	Women	Men	Women	Men	Women
18–40	55	40	40	35	220	170	155	130
40–50	50	40	35	30	200	160	140	115
50–60	50	40	35	30	190	150	140	110
60–70	45	35	35	25	180	140	130	105
70–80	40	30	30	25	150	120	115	90
80–90	30	25	25	20	130	100	100	80

Dose below which the estimated time over the legal limit in France, Poland, Netherlands (20 µg/L) and England/Wales (80 µg/L) is zero – by gender and age and preparation (MR: modified release; IR: immediate release) with normal renal function. BD is twice-daily, QDS is four-times daily.

were not under predicting; this can be seen in the comparative data (Figure 1).^{35–37}

Our model used one immediate-release and one modified-release formulation, based on collated published pharmacokinetic data.^{22,33–36} Clinically differing formulations and circumstances will lead to differing absorption kinetics between formulations, potentially leading to differing dose–concentration relationships in individuals. These findings offer an insight into the changing pharmacokinetic relationship with age and the effect an average dose will have and will help guide the clinician. People taking as required immediate-release morphine might do so at different dosing intervals. Some individuals might take 4 hourly doses instead. In practice, most patients do not take a dose overnight (e.g. 2:00 a.m.), and thus, the average dose interval is nearer 6 h than 4 h. We modelled morphine 6 hourly to clinical applicability within the confines of the software (as a dose gap cannot be added, for sleep/dose omission, etc.). Furthermore, during repeated administration, the individual morphine dose leading to a plasma concentration over 20 or 80 µg/L was effectively the same for 4 and 6 hourly dosing.

This study cannot account for all the variabilities between individuals. With 100 ‘people’ per modelled pharmacokinetic trial group, the results should be representative for northern European populations. A degree of variability around the ‘normal’ state has been included within the model, but this does not account for extreme variability. Extremes of body mass index (BMI), eating, drinking, drug interactions, and effects from the underlying disease/other co-morbidities have not been included in this model. These individual variables could potentially alter the pharmacokinetics and metabolism of morphine.^{3,55} The models suggest that cytochrome P450 enzyme inhibitors (inhibitors of hepatic clearance) would have a profound effect. As the active metabolites of morphine (e.g. morphine-6-glucuronide) are not included in the new law, they have not been modelled for, although morphine-6-glucuronide can have an impact on driving performance.⁵⁶ Multiple drugs have

not been accounted for in the current study, although morphine is often used with other medications.^{6,57–59} The clinician must take all these factors into account.⁵

Future research

Data using driving simulators and on-the-road assessments of the effects of stable morphine at different dose ranges, as well as opioid initiation and titration are needed. Although the law does not include morphine metabolites, they might influence cognition and driving. Future work should ascertain the concentrations of morphine metabolites and their relationship with cognitive, psychomotor function and driving impairment in different patient groups. The effects of immediate-release morphine taken ‘as-required’ in addition to regular modified-release morphine on morphine plasma concentrations are needed.

Clinical implications

This *in silico* modelling study evaluated the relationship between morphine dose and plasma concentration. This will help guide clinicians to know whether a patient is likely to have a plasma concentration above 20 or 80 µg/L (the legal driving limit), but this does not inform the risk of impaired driving for any individual for any plasma concentration. As there will be inter-individual variability, it is important that these data are used to guide personalised patient decisions, not make them.

Older age, women, modified-release formulation and worse renal function were associated with higher plasma concentrations. In general, across all studied groups, morphine doses below 120 mg/day were unlikely to result in a morphine plasma concentration above 80 µg/L. This was much lower at 30 mg/day for the 20 µg/L limit in France, Poland and Netherlands. An immediate-release morphine dose taken alongside modified-release morphine would lead to a higher plasma concentration.

The prescribing clinician must retain clinical judgement for each patient and advise to restrict driving until they know the effect of morphine on their driving ability. Both the legal limit and the actual effect on driving as well as patients' own perspective of their cognitive performance need to be taken into consideration as people with impaired driving will be breaking the law irrespective of blood concentration.

Conclusion

In silico modelling of the dose–concentration relationship helps inform which patients are likely to have higher plasma concentrations after taking oral morphine. This information can help clinicians to make individualised prescribing decisions and provide advice on driving. Clinical judgement taking into account the individual patient's level of impairment and insight is needed alongside understanding the dose–concentration relationship, as people who have impaired driving will be breaking the law irrespective of their morphine plasma concentration.

Acknowledgements

J.W.B. and D.J.B. developed the concept and design of this work. D.J.B. performed the in silico analysis, and all authors helped with the interpretation of the data. J.W.B. and D.J.B. wrote the first draft. All authors contributed to subsequent drafts and approved the final version to be published. All authors agree to be accountable for all aspects of the work in ensuring that questions related to the accuracy or integrity of any part of the work are appropriately investigated and resolved. J.W.B. and D.J.B. contributed equally to this article. J.W.B. is the guarantor.

Availability of data and materials

The datasets used and/or analysed during the current study are available from the corresponding author.



Declaration of conflicting interests

The author(s) declared no potential conflicts of interest with respect to the research, authorship, and/or publication of this article.

Funding

The author(s) disclosed receipt of the following financial support for the research, authorship, and/or publication of this article: D.F. is funded by Fundação para a Ciência e Tecnologia (FCT) from the Portuguese Government (PhD grant SFRH/BD/109920/2015).

ORCID iDs

Jason W Boland  <https://orcid.org/0000-0001-5272-3057>
Miriam Johnson  <https://orcid.org/0000-0001-6204-9158>

References

1. Mailis-Gagnon A, Lakha SF, Furlan A, et al. Systematic review of the quality and generalizability of studies on the

- effects of opioids on driving and cognitive/psychomotor performance. *Clin J Pain* 2012; 28: 542–555.
2. Hetland A and Carr DB. Medications and impaired driving. *Ann Pharmacother* 2014; 48: 494–506.
3. Department for Transport. Drug driving, <https://www.gov.uk/government/collections/drug-driving> (2014, accessed 21 September 2017).
4. Medicines and Healthcare Products Regulatory Agency. Drugs and driving: blood concentration limits to be set for certain controlled drugs in a new legal offence, <https://www.gov.uk/drug-safety-update/drugs-and-driving-blood-concentration-limits-to-be-set-for-certain-controlled-drugs-in-a-new-legal-offence> (2014, accessed 21 September 2017).
5. Wolff K, Brimblecombe R, Forfar J, et al. Driving under the influence of drugs: report from the Expert Panel on Drug Driving, https://www.gov.uk/government/uploads/system/uploads/attachment_data/file/167971/drug-driving-expert-panel-report.pdf (2013, accessed 21 September 2017).
6. Vindenes V, Jordbru D, Knapskog AB, et al. Impairment based legislative limits for driving under the influence of non-alcohol drugs in Norway. *Forensic Sci Int* 2012; 219: 1–11.
7. Walsh JM. A state-by-state analysis of laws dealing with driving under the influence of drugs, www.nhtsa.gov/staticfiles/nti/pdf/811236.pdf (2009, accessed 14 September 2017).
8. Roads and Maritime Services. Drug and alcohol offences, <http://www.rms.nsw.gov.au/roads/safety-rules/demerits-offences/drug-alcohol/drug-alcohol-offences.html> (2015, accessed 22 April 2018).
9. Queensland Government. Drugs and driving, <https://www.qld.gov.au/transport/safety/road-safety/drink-driving/drugs/> (2016, accessed 10 September 2017).
10. NHS South Region. Controlled drugs newsletter. Sharing good practice in the south west. Prescribing opioids for chronic pain, <https://www.england.nhs.uk/south/wp-content/uploads/sites/6/2016/09/cd-newsletter-opioids-aware-special.pdf> (2016, accessed 21 September 2017).
11. Royal College of Anaesthetists. Opioids and driving, <http://www.rcoa.ac.uk/faculty-of-pain-medicine/opioids-aware/best-professional-practice/opioids-and-driving> (2016, accessed 21 September 2017).
12. Hegmann KT, Weiss MS, Bowden K, et al. ACOEM practice guidelines: opioids for treatment of acute, subacute, chronic, and postoperative pain. *J Occup Environ Med* 2014; 56: e143–e159.
13. Jones AW, Holmgren A and Kugelberg FC. Driving under the influence of opiates: concentration relationships between morphine, codeine, 6-acetyl morphine, and ethyl morphine in blood. *J Anal Toxicol* 2008; 32: 265–272.
14. Andrew MA, Hebert MF and Vicini P. Physiologically based pharmacokinetic model of midazolam disposition during pregnancy. *Conf Proc IEEE Eng Med Biol Soc* 2008; 2008: 5454–5457.
15. Barrett JS, Della Casa Alberighi O, Laer S, et al. Physiologically based pharmacokinetic (PBPK) modeling in children. *Clin Pharmacol Ther* 2012; 92: 40–49.
16. Li GF, Wang K, Chen R, et al. Simulation of the pharmacokinetics of bisoprolol in healthy adults and patients with impaired renal function using whole-body physiologically

- based pharmacokinetic modeling. *Acta Pharmacol Sin* 2012; 33: 1359–1371.
17. Zhuang X and Lu C. PBPK modeling and simulation in drug research and development. *Acta Pharm Sin B* 2016; 6: 430–440.
 18. Jamei M, Marciniak S, Edwards D, et al. The Simcyp population based simulator: architecture, implementation, and quality assurance. *In Silico Pharmacol* 2013; 1: 9.
 19. Jamei M, Dickinson GL and Rostami-Hodjegan A. A framework for assessing inter-individual variability in pharmacokinetics using virtual human populations and integrating general knowledge of physical chemistry, biology, anatomy, physiology and genetics: a tale of ‘bottom-up’ vs ‘top-down’ recognition of covariates. *Drug Metab Pharmacokinet* 2009; 24: 53–75.
 20. ChemSpider. CSID:4450907, <http://www.chemspider.com/Chemical-Structure.4450907.html> (2017, accessed 21 September 2017).
 21. British Medical Journal Group and Royal Pharmaceutical Society of Great Britain. BNF 73, 2017, <https://vnras.com/wp-content/uploads/2017/06/BNF-73-2017.pdf>
 22. Hasselstrom J and Sawe J. Morphine pharmacokinetics and metabolism in humans. Enterohepatic cycling and relative contribution of metabolites to active opioid concentrations. *Clin Pharmacokinet* 1993; 24: 344–354.
 23. Einolf HJ. Comparison of different approaches to predict metabolic drug-drug interactions. *Xenobiotica* 2007; 37: 1257–1294.
 24. Jamei M, Marciniak S, Feng K, et al. The Simcyp population-based ADME simulator. *Expert Opin Drug Metab Toxicol* 2009; 5: 211–223.
 25. Rostami-Hodjegan A and Tucker GT. Simulation and prediction of in vivo drug metabolism in human populations from in vitro data. *Nat Rev Drug Discov* 2007; 6: 140–148.
 26. Kostewicz ES, Aarons L, Bergstrand M, et al. PBPK models for the prediction of in vivo performance of oral dosage forms. *Eur J Pharm Sci* 2014; 57: 300–321.
 27. Jamei M, Turner D, Yang J, et al. Population-based mechanistic prediction of oral drug absorption. *AAPS J* 2009; 11: 225–237.
 28. Bouzom F, Ball K, Perdaems N, et al. Physiologically based pharmacokinetic (PBPK) modelling tools: how to fit with our needs? *Biopharm Drug Dispos* 2012; 33: 55–71.
 29. Turner DB, Liu B, Patel N, et al. Commentary on ‘In silico modeling of gastrointestinal drug absorption: predictive performance of three physiologically based absorption models’. *Mol Pharm* 2017; 14: 336–339.
 30. Sjogren E, Thorn H and Tannergren C. In silico modeling of gastrointestinal drug absorption: predictive performance of three physiologically based absorption models. *Mol Pharm* 2016; 13: 1763–1778.
 31. Barter ZE, Chowdry JE, Harlow JR, et al. Covariation of human microsomal protein per gram of liver with age: absence of influence of operator and sample storage may justify interlaboratory data pooling. *Drug Metab Dispos* 2008; 36: 2405–2409.
 32. Cockcroft DW and Gault MH. Prediction of creatinine clearance from serum creatinine. *Nephron* 1976; 16: 31–41.
 33. Preechagoon D, Sumyai V, Chulavatnatol S, et al. Formulation development of morphine sulfate sustained-release tablets and its bioequivalence study in healthy Thai volunteers. *AAPS PharmSciTech* 2010; 11: 1449–1455.
 34. Thirlwell MP, Sloan PA, Maroun JA, et al. Pharmacokinetics and clinical efficacy of oral morphine solution and controlled-release morphine tablets in cancer patients. *Cancer* 1989; 63: 2275–2283.
 35. Collins SL, Faura CC, Moore RA, et al. Peak plasma concentrations after oral morphine: a systematic review. *J Pain Symptom Manage* 1998; 16: 388–402.
 36. Hoskin PJ, Hanks GW, Aherne GW, et al. The bioavailability and pharmacokinetics of morphine after intravenous, oral and buccal administration in healthy volunteers. *Br J Clin Pharmacol* 1989; 27: 499–505.
 37. Kotb HI, el-Kabsh MY, Emara SE, et al. Pharmacokinetics of controlled release morphine (MST) in patients with liver cirrhosis. *Br J Anaesth* 1997; 79: 804–806.
 38. Levey AS, Coresh J, Balk E, et al. National Kidney Foundation practice guidelines for chronic kidney disease: evaluation, classification, and stratification. *Ann Intern Med* 2003; 139: 137–147.
 39. Hand CW, Moore RA and Sear JW. Comparison of whole blood and plasma morphine. *J Anal Toxicol* 1988; 12: 234–235.
 40. Schisler RE, Groninger H and Rosielle DA. Counseling patients on side effects and driving when starting opioids #248. *J Palliat Med* 2012; 15: 484–485.
 41. Wiffen PJ, Wee B and Moore RA. Oral morphine for cancer pain. *Cochrane Database Syst Rev* 2016; 4: CD003868.
 42. Mailis-Gagnon A, Lakha SF, Ou T, et al. Chronic noncancer pain: characteristics of patients prescribed opioids by community physicians and referred to a tertiary pain clinic. *Can Fam Physician* 2011; 57: e97–e105.
 43. Beck T, Haasen C, Verthein U, et al. Maintenance treatment for opioid dependence with slow-release oral morphine: a randomized cross-over, non-inferiority study versus methadone. *Addiction* 2014; 109: 617–626.
 44. Anstey KJ, Wood J, Lord S, et al. Cognitive, sensory and physical factors enabling driving safety in older adults. *Clin Psychol Rev* 2005; 25: 45–65.
 45. Kamboj SK, Tookman A, Jones L, et al. The effects of immediate-release morphine on cognitive functioning in patients receiving chronic opioid therapy in palliative care. *Pain* 2005; 117: 388–395.
 46. Klepstad P, Kaasa S, Jystad A, et al. Immediate- or sustained-release morphine for dose finding during start of morphine to cancer patients: a randomized, double-blind trial. *Pain* 2003; 101: 193–198.
 47. Dean M. Opioids in renal failure and dialysis patients. *J Pain Symptom Manage* 2004; 28: 497–504.
 48. Soleimanpour H, Safari S, Shahsavari Nia K, et al. Opioid drugs in patients with liver disease: a systematic review. *Hepat Mon* 2016; 16: e32636.
 49. Veldhuijzen DS, van Wijck AJ, Wille F, et al. Effect of chronic nonmalignant pain on highway driving performance. *Pain* 2006; 122: 28–35.
 50. Nilsen HK, Landro NI, Kaasa S, et al. Driving functions in a video simulator in chronic non-malignant pain patients using and not using codeine. *Eur J Pain* 2011; 15: 409–415.
 51. Mucci-LoRusso P, Berman BS, Silberstein PT, et al. Controlled-release oxycodone compared with controlled-release morphine

- in the treatment of cancer pain: a randomized, double-blind, parallel-group study. *Eur J Pain* 1998; 2: 239–249.
52. Klepstad P, Kaasa S and Borchgrevink PC. Start of oral morphine to cancer patients: effective serum morphine concentrations and contribution from morphine-6-glucuronide to the analgesia produced by morphine. *Eur J Clin Pharmacol* 2000; 55: 713–719.
 53. Klepstad P, Borchgrevink PC, Dale O, et al. Routine drug monitoring of serum concentrations of morphine, morphine-3-glucuronide and morphine-6-glucuronide do not predict clinical observations in cancer patients. *Palliat Med* 2003; 17: 679–687.
 54. Mercadante S, Bianchi M, Villari P, et al. Opioid plasma concentration during switching from morphine to methadone: preliminary data. *Support Care Cancer* 2003; 11: 326–331.
 55. Cherny N, Fallon M, Kaasa S, et al. *Oxford textbook of palliative medicine*. New York: Oxford University Press, 2015.
 56. Bachs L, Hoiseth G, Skurtveit S, et al. Heroin-using drivers: importance of morphine and morphine-6-glucuronide on late clinical impairment. *Eur J Clin Pharmacol* 2006; 62: 905–912.
 57. Meuleners LB, Duke J, Lee AH, et al. Psychoactive medications and crash involvement requiring hospitalization for older drivers: a population-based study. *J Am Geriatr Soc* 2011; 59: 1575–1580.
 58. Oliver J, Seymour A, Wylie F, et al. *Monitoring the effectiveness of UK field impairment tests*. London: Department for Transport, 2006.
 59. Mura P, Kintz P, Ludes B, et al. Comparison of the prevalence of alcohol, cannabis and other drugs between 900 injured drivers and 900 control subjects: results of a French collaborative study. *Forensic Sci Int* 2003; 133: 79–85.