



# Application of next generation sequencing-based rapid detection platform for microbiological diagnosis and drug resistance prediction in acute lower respiratory infection

Lingshan Chao<sup>1#</sup>, Jihong Li<sup>2#</sup>, Ya'nan Zhang<sup>3</sup>, Hao Pu<sup>3</sup>, Xixin Yan<sup>1</sup>

<sup>1</sup>Department of Respiratory and Critical Care Medicine, the Second Hospital of Hebei Medical University, Shijiazhuang, China; <sup>2</sup>Department of Laboratory Medicine, The Second Hospital of Hebei Medical University, Shijiazhuang, China; <sup>3</sup>Department of Science and Technology, Shanghai Pathogeno Medical Technology Co., Ltd., Shanghai, China

**Contributions:** (I) Conception and design: X Yan, L Chao, J Li; (II) Administrative support: X Yan; (III) Provision of study materials or patients: J Li, L Chao; (IV) Collection and assembly of data: J Li, Y Zhang, H Pu; (V) Data analysis and interpretation: L Chao, J Li, Y Zhang, H Pu; (VI) Manuscript writing: All authors; (VII) Final approval of manuscript: All authors.

<sup>#</sup>These authors contributed equally to this work.

**Correspondence to:** Xixin Yan, Department of Respiratory and Critical Care Medicine, the Second Hospital of Hebei Medical University, 215 West Heping Road, Shijiazhuang 050000, China. Email: xi\_xin\_yan@163.com.

**Background:** Acute lower respiratory infections (ALRIs) have a high mortality rate. We aimed to apply a platform that rapidly detects 36 microorganisms and 49 antibiotic resistance markers in the clinical diagnosis of ALRI and drug resistance prediction.

**Methods:** Multicenter collection of clinical samples from patients with ALRIs was carried out from 2017 to 2018. Sputum culture (SC) was performed, which provided two outcomes: the detected pathogens and the resistance to different antibiotics. Additionally, each sputum sample was used to extract deoxyribonucleic acids (DNAs) followed by high-throughput sequencing.

**Results:** Eleven commonly observed pathogens were surveyed, and for all samples with positive SC results (137 cases), the overall coverage was 95.62% according to the sequencing results. The receiver operating characteristic (ROC) curve was drawn, and cutoff reads of the most frequently detected pathogens were acquired. Overall, sequencing exhibited significantly higher sensitivity in the detection of pathogens compared with the traditional SC method, with a generally satisfactory specificity. Furthermore, we investigated the correlation between antibiotic resistance gene phenotypes and the actual outcomes of the drug sensitivity test, and some significant correlations were found, especially for the resistance to Amikacin in the presence of *blaOXA7*.

**Conclusions:** Sequencing-based sputum metagenomics can reveal a profile of the lung pathogen microbiome. The sequencing method offers both sufficient accuracy and significantly higher sensitivity in the detection of pathogens, and can be at least a complementary approach to traditional SC reporting. The sequencing technique also revealed some novel potential correlations between the presence of different pathogens, as well as new antimicrobial-resistant genes.

**Keywords:** Acute lower respiratory infection (ALRI); microorganisms; next generation sequencing (NGS); drug resistance; antibiotic

Submitted Sep 24, 2020. Accepted for publication Dec 02, 2020.

doi: 10.21037/atm-20-7081

**View this article at:** <http://dx.doi.org/10.21037/atm-20-7081>

## Introduction

Acute lower respiratory infections (ALRIs) are common diseases worldwide, and have a high mortality rate, especially in children, where they account for approximately 30% of child deaths (1-3). Generally, ALRIs are caused by microbial organisms such as bacteria, viruses, mycoplasma, chlamydia, and legionella. At present, there are two major concerns with regards to ALRI detection and treatment. Firstly, the traditional sputum culture (SC) diagnosis has a low sensitivity in probing many microorganisms (4,5). Secondly, the qualified sputum comes from lower respiratory tract, as it passes through mouth, the microbes located in oral cavity may contaminate the sputum. Also, severe acute bacterial infections are an enormous and growing healthcare burden, and they typically lack timely diagnosis and evade adequate therapy in around 40% of clinical cases. Besides the common microorganisms, there are numerous pathogens that are difficult to detect, such as *Mycoplasma pneumoniae*, *Chlamydia pneumoniae*, *Aspergillus niger*, *Cryptococcus neoformans*, *Pneumocystis carinii*, *Adenovirus*, *Human Bocavirus*, *Cytomegalovirus*, and the *Epstein-Barr (EB) virus*. Many of these organisms are fastidious pathogens, but conventional culture methodologies (like SC) exhibit a low detection rate. Given the difficulties of pathogen identification in infectious diseases, there is a pressing need for alternative diagnostic methods that are rapid and easy with batch processing features to detect multiple microorganisms.

The problem of antibiotic abuse has become prominent, especially in China, and emerging pathogenic bacteria have developed resistance to single and even multiple antibiotics (6-9). Moreover, super bacteria, including methicillin-resistant *Staphylococcus aureus* (MRSA) (10,11), multidrug-resistant *Streptococcus pneumoniae* (MDRSP) (12), and multidrug resistance *Acinetobacter baumannii* (MRAB) (13) have recently emerged and rapidly developed a high prevalence. According to drug resistance monitoring data in China, up to 33% of isolated strains in 3-A grade hospitals are multi-drug resistant (14).

As has been widely reported, inappropriate antibacterial treatment can increase the mortality of respiratory infections (15,16). An early prediction of antibiotic resistance prior to treatment can largely improve the antibiotic treatment outcomes. To address the diagnosis and resistance prediction challenge in ALRI patients, we applied a platform that rapidly (within 16 hours) detects 36 microorganisms as well as 49 antibiotic resistance markers. Our findings exhibited

significant advantages of the sequencing method compared with conventional SC methods. Next generation sequencing (NGS) could minimize the effect of contamination in sputum test. As the microbes colonized in oral cavity are mainly irresponsible to lower respiratory tract, they are not included in our pathogen-targeted panel, so the non-pathogen microbes would not disturb the result. In addition, doctors could judge which pathogens detected in our result could be mainly responsible for the symptom of the patient according to other clinical evidence.

We present the following article in accordance with the MDAR reporting checklist (available at <http://dx.doi.org/10.21037/atm-20-7081>).

## Methods

### Study population

This prospective study was approved by the Ethics Review Committee of the Second Hospital of Hebei Medical University (No. 2016150), and all the patients were given the informed consent before participated in. The procedures performed involving human were in accordance with the Declaration of Helsinki (as revised in 2013). Multicenter collection of clinical samples from patients with ALRIs was carried out from 2017 to 2018. The inclusion criteria were as follows: patients with obvious symptoms of lower respiratory tract infection, including: (I) pneumonia patients; any of following symptoms or signs: fever (>38 °C), suspension of breathing, shortness of breath, bradycardia, wheezing, coughing, dry snoring, and chest images showing new or progressive exudation, solid shadows, cavity or pleural effusion, etc.; (II) tracheitis or tracheobronchitis patients; two of the following symptoms or signs were observed: cough with increased sputum, dry voice, wheezing, respiratory distress, apnea, or bradycardia, but the patient showed no clinical symptoms or X-ray evidence of pneumonia; and (III) other infections of the lower respiratory tract based on lung radiographic examination, such as lung abscess or empyema.

The clinical data of each patient was recorded, and the blood and sputum samples were collected upon admission to hospital. The SCs were performed in the laboratory, which provided two outcomes: the detected pathogens and the resistance to different antibiotics (including Piperacillin, Ampicillin, Ampicillin/Sulbactam, Piperacillin/tazobactam, Cefoperazone/Sulbactam, Cefoperazone, Cefotaxime, Cefepime, Cefazolin, Cefuroxime axe, Cefixim

**Table 1** All of the target pathogens covered in sequencing and SC detection

Gram-positive bacteria	Gram-negative bacteria	Fungi	Other pathogens
<i>Staphylococcus aureus</i>	<i>Escherichia coli</i> ( <i>E. coli</i> )	<i>Candida albicans</i>	<i>Mycoplasma pneumoniae</i>
<i>Staphylococcus epidermidis</i>	<i>Klebsiella oxysporum</i>	<i>Candida glabrata</i>	<i>Chlamydia pneumoniae</i>
<i>Streptococcus pneumoniae</i>	<i>Klebsiella pneumoniae</i>	<i>Candida parapsilosis</i>	Adenovirus
<i>Streptococcus mutans</i>	<i>Serratia marcescens</i>	<i>Candida krusei</i>	Bocavirus
<i>Streptococcus pyogenes</i>	<i>Haemophilus influenzae</i>	<i>Pneumocystis</i>	Epstein-Barr virus
<i>Streptococcus agalactiae</i>	<i>Moraxella catarrhalis</i>	<i>Aspergillus niger</i>	Cytomegalovirus
<i>Listeria monocytogenes</i>	<i>Pseudomonas aeruginosa</i>	<i>Aspergillus terreus</i>	
<i>Mycobacterium tuberculosis</i> complex group	<i>Acinetobacter baumannii</i>	<i>Aspergillus fumigatus</i>	
Enterococci	<i>Legionella pneumophila</i>	<i>Aspergillus flavus</i>	
	<i>Stenotrophomonas maltophilia</i>	<i>Cryptococcus neoformans</i>	
	<i>Enterobacter cloacae</i>		
	<i>Bordetella pertussis</i>		

sodium, Cefotitan, Ceftazidime, Ceftriaxone, Aztreonam, Meropenem, Imipenem, Biapenem, Amikacin, Gentamicin, Tobramycin, Ciprofloxacin, Levofloxacin, Nitrofurantoin, etc.). Additionally, the sputum sample was used to extract deoxyribonucleic acids (DNAs) followed by high-throughput sequencing.

### Pathogen targets

All of the relevant pathogens explored in sequencing and SC are listed in *Table 1*. The results of the SC were used for comparison, and the suspected results based on sequencing data were used to analyze efficacy, including sensitivity and specificity.

### Sequencing for rapid detection of microorganisms and antibiotic resistance genes

The Curetis Unyvero™ System was used for rapid detection of microorganisms and antibiotic resistance genes. The sputum was liquefied by adding dissolving solutions if necessary. After the addition of 200 µL of a qualified sputum sample, the sample tube was loaded into the Lysator and treated according to a preselected protocol fully automatically. The Unyvero™ Sample Tube Cap seals the Unyvero™ Sample Tube, and contains Proteinase K, Lysozyme, Staphylococcus lysozyme, snail enzyme, and an

internal control gene for the quality control of the entire workflow for each sample.

In combination with the lysis buffer and Proteinase K, liquefaction of each sample was performed within 30 min and all potentially infectious pathogens were inactivated. Following lysis, the Biotek extractor was applied to extract nucleic acids automatically. The nucleic acids were quantified by the Unyvero system and then amplified by polymerase chain reaction (PCR). The PCR assay consisted of multiplexed primer sets in combination with primers for an internal process control. The product was purified using the magnetic bead method to complete the establishment of targeted capture and sequencing libraries. The qualified DNA libraries were sequenced on the Illumina high-throughput sequencing platform. Sequencing data were automatically normalized based on the amplification calibration coefficient. A total of 10,000 sequencing reads were analyzed for each sample. Overall, if the pathogenic reads of a microorganism were below 100, it was regarded as negative (at the sequencing level), or otherwise reported as positive.

### Statistical analysis

Data were analyzed using SPSS 22.0 software. For comparison of frequencies of the categorical data, Pearson chi-squared ( $\chi^2$ ) test or Fisher's exact test were used.

Quantitative data were compared between the two groups using a *t* test (in normal distribution) or a non-parametric test (Mann-Whitney Test, not in normal distribution). The correlation between the reads of two pathogen markers was analyzed and expressed as the Spearman *r* values. A receiver operating characteristic (ROC) curve was drawn to acquire the optimal threshold in predicting the positive outcome of a specific pathogen. For all presented data,  $P < 0.05$  was considered statistically significant.

## Results

### *Patient characteristics and clinical samples*

As shown in *Figure 1A*, the SC revealed 147 patients with clear pathogens and 148 with no pathogens (from a total cohort of 295 subjects). An overwhelming majority of patients in the pathogen group were found with a single pathogen [105], 27 patients had two compound pathogens, and 15 patients had three Gram-negative bacteria. In the single pathogen group, *Klebsiella pneumoniae* exhibited the highest frequency (32 cases), followed by *Pseudomonas aeruginosa* (20 cases), *Stenotrophomonas maltophilia* (11 cases), and *Candida albicans* (nine cases). The most frequently observed outcomes are listed in *Figure 1B*.

### *Performance of sequencing results focusing on SC outcomes*

We also assessed the coverage of the sequencing results focusing on all SC positive samples. Eleven commonly observed pathogens (*Acinetobacter baumannii*, *E. coli*, *Klebsiella pneumoniae*, *Staphylococcus aureus*, *Pseudomonas aeruginosa*, *Stenotrophomonas maltophilia*, *Haemophilus influenzae*, *Candida albicans*, *Candida glabrata*, *Serratia marcescens*, and *Aspergillus*) were surveyed, and for all SC positive samples (137 cases) the overall coverage was 95.62% (131 cases) according to the sequencing results. The SC positive cases and sequencing findings, as well as the percent coverage (sequencing positive case number/SC case number) are presented in *Figure 2A*. For most SC positive pathogens, the sequencing result showed a 100% coverage, which suggests that this is a satisfactory detection method.

Subsequently, we observed some special pathogens that are difficult to detect using the normal SC method but have a high clinical severity. The sequencing method exhibited notable superiority, especially for *Streptococcus pneumoniae*, *EB virus*, and *Cytomegalovirus* (*Figure 2B*). This result

strongly suggests that sequencing diagnosis is efficacious for pathogen recognition, especially for those difficult to observe using the traditional SC method.

To explore the accuracy threshold of commonly-observed pathogens, we applied ROC curves and calculated the cutoff reads for diagnosis of the most frequently detected pathogens (*Figure 3*). Here, SC outcomes were regarded as the actual results, and sequencing results (reads) were used as diagnostic references. For *Klebsiella pneumoniae*, the sequencing data provided an area under the curve (AUC) of 0.637 and an optimal cutoff value of 57 reads (*Figure 3A*). The sequencing method showed an AUC of 0.622, with an optimal cutoff value of 168 reads for the detection of *Pseudomonas aeruginosa* (*Figure 3B*). For the mucinous type of *Pseudomonas aeruginosa*, sequencing exhibited an extremely high AUC (0.986), with an optimal cutoff value of 9,677 (sensitivity = 1, specificity = 0.976), which suggests that at high reads, sequencing results are very useful to distinguish the mucinous *Pseudomonas aeruginosa* (*Figure 3D*). Moreover, the performance of sequencing in *E. coli* detection showed a high sensitivity and specificity, with an AUC of 0.96 and a recommended cutoff value of 17 reads (*Figure 3C*). However, the efficacy of the sequencing method was relatively low for the diagnosis of *Candida albicans* and *Stenotrophomonas maltophilia* (AUC = 0.41 and 0.516, respectively). Overall, sequencing had much higher sensitivity in the detection of pathogens compared with the traditional SC method, with a generally satisfactory specificity.

### *Correlation between different pathogen markers*

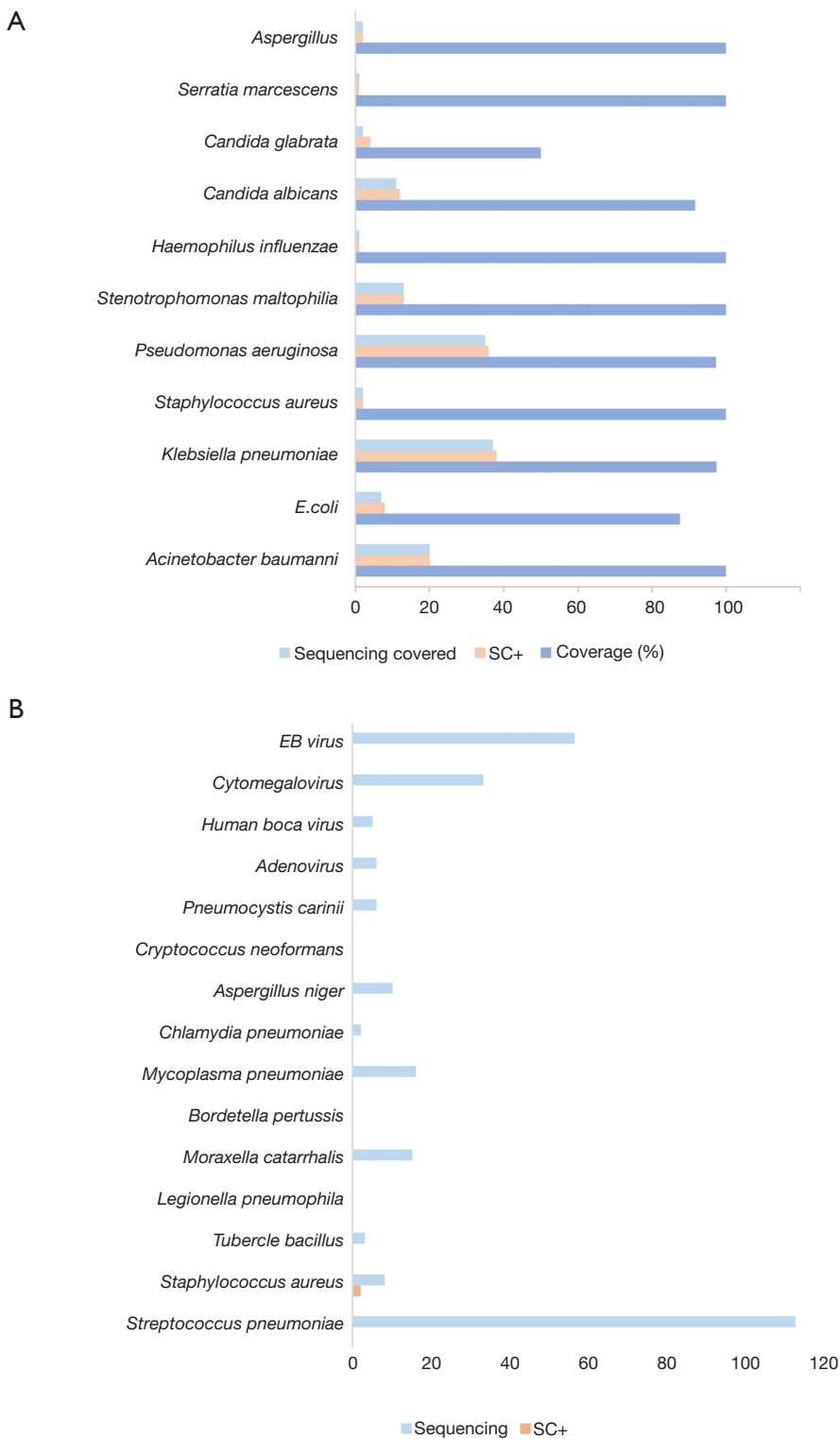
For the first time, we noticed that there were clear associations between different pathogen markers. Several common pathogens were analyzed using the Spearman method, and some significant relationships of their sequencing reads were observed, including *Acinetobacter baumannii* and *Candida glabrata* (*Figure 4A*), *Acinetobacter baumannii* and *Klebsiella pneumoniae* (*Figure 4B*), *Mycoplasma pneumoniae* and *Candida albicans* (*Figure 4C*), *E. coli* and *Candida albicans* (*Figure 4D*), *Pseudomonas aeruginosa* and *Klebsiella pneumoniae* (*Figure 4E*), *Streptococcus pneumoniae* and *Klebsiella pneumoniae* (*Figure 4F*), *Klebsiella pneumoniae* and *Candida glabrata* (*Figure 4G*), *Klebsiella pneumoniae* and *Enterobacter cloacae* (*Figure 4H*), *Klebsiella pneumoniae* and *E. coli* (*Figure 4I*), *Klebsiella pneumoniae* and *Streptococcus agalactiae* (*Figure 4J*), *E. coli* and *Streptococcus agalactiae* (*Figure 4K*), *E. coli* and *Streptococcus mutans* (*Figure 4L*),



**Figure 1** Patient characteristics and clinical samples. (A) The SC revealed 147 patients with clear pathogens and 148 with no pathogens (from a total cohort of 295 subjects). An overwhelming majority of patients in the pathogen group were found with a single pathogen [105], 27 patients had two compound pathogens, and 15 had three Gram-negative bacteria; (B) the most frequently observed pathogens. *Klebsiella pneumoniae* exhibited the highest frequency (32 cases), followed by *Pseudomonas aeruginosa* (20 cases), *Stenotrophomonas maltophilia* (11 cases), and *Candida albicans* (9 cases), etc. SC, sputum culture.

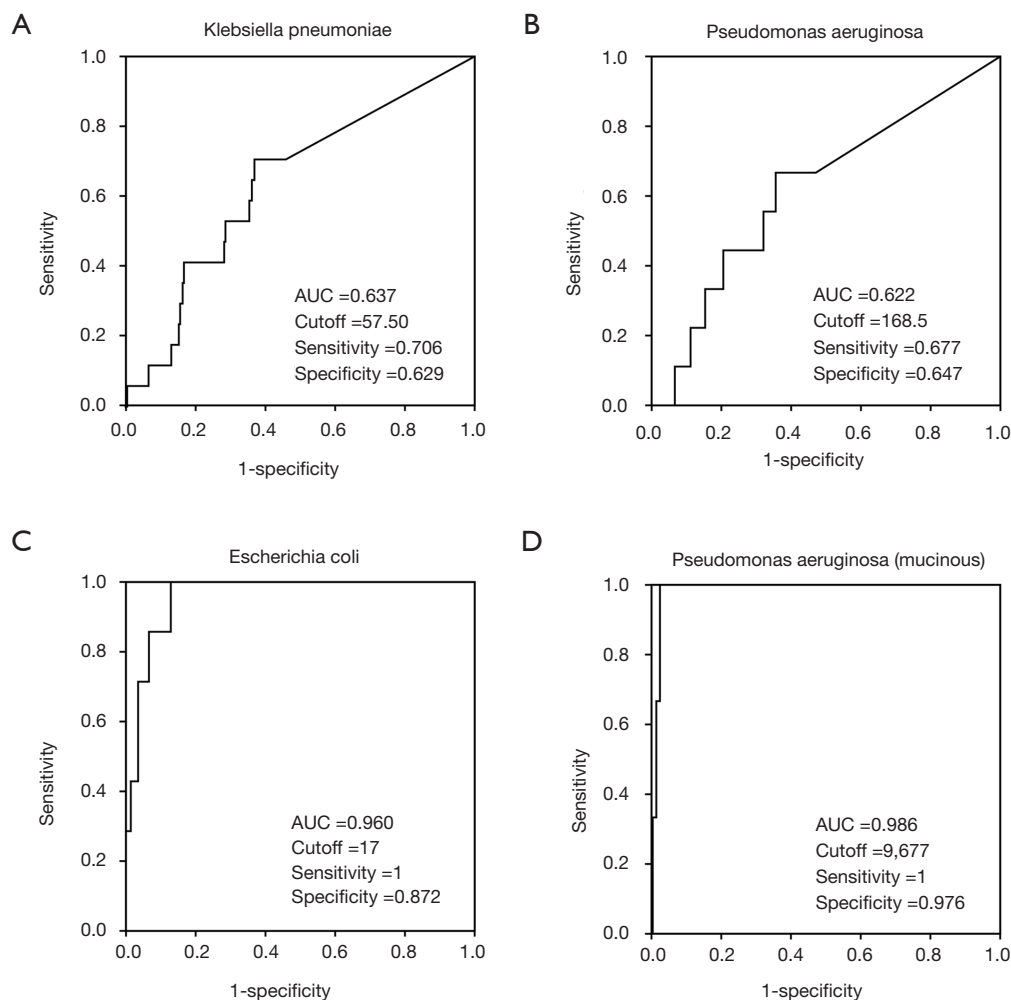
*EB virus* and *Enterococcus* (Figure 4M), *EB virus* and *E. coli* (Figure 4N), *Adenovirus* and *Haemophilus influenzae* (Figure 4O), and *EB virus* and *pneumocystis* (Figure 4P), among others. There were also positive correlations

between fungi results (for the limited positive number of fungi, such as *Aspergillus* or *Aspergillus niger*, data not shown), as well as associations between fungi and other pathogens. These correlations were seldom noticed in the



**Figure 2** The coverage of sequencing results, focusing on all SC samples, and its high sensitivity in special pathogens. (A) Eleven commonly observed pathogens were surveyed, and for all SC positive samples (137 cases) the overall coverage was 95.62% (131 cases) according to the sequencing results; (B) differences between the sequencing and SC methods in the detection of special pathogens that are difficult to detect using the normal SC method, but exhibit a high clinical severity. SC, sputum culture.





**Figure 3** The ROC curves calculating the cutoff reads for diagnosis of the most frequently detected pathogens. (A) *Klebsiella pneumoniae*; (B) *Pseudomonas aeruginosa*; (C) *E. coli*; (D) mucinous *Pseudomonas aeruginosa*. ROC, receiver operating characteristic

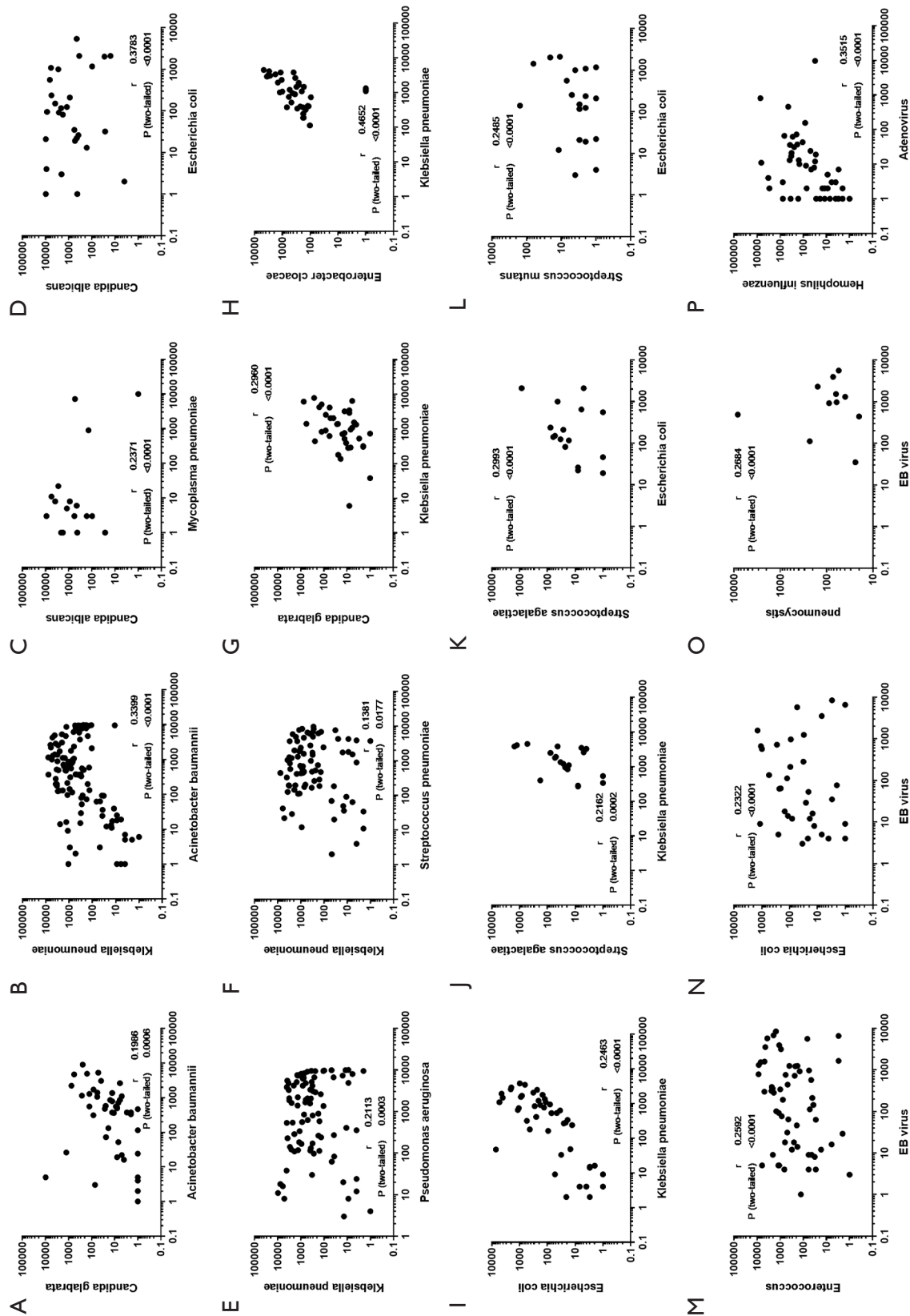
traditional SC method.

#### **Performance of sequencing in antimicrobial-resistance prediction**

Next, the sensitivity to different types of antibiotics in the SC were recorded. The current SC method is generally regarded as a benchmark for the diagnosis of drug-resistant infections. However, studies that have surveyed the resistance-associated mutations in sputum samples are limited.

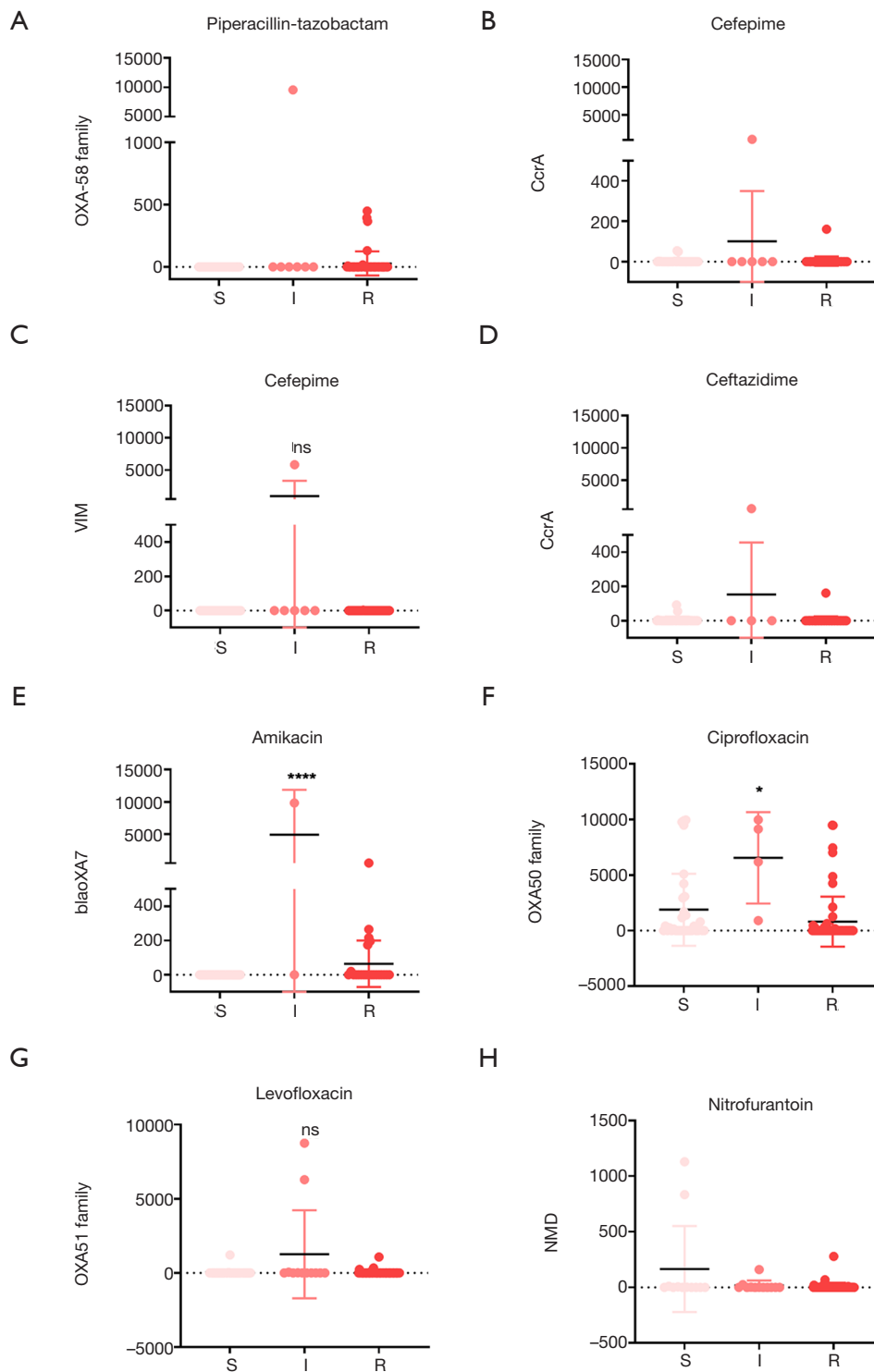
We also investigated the correlation between antibiotic resistance gene phenotypes and the actual outcomes of the drug sensitivity test. Detected samples were treated with multiple antibiotics, and were later divided into three groups: susceptible (S), intermediate (I), and resistant

(R). The observed significant correlations between antimicrobial-resistance and drug-resistance mutations were as follows: *OXA-58* family mutations and Piperacillin-Tazobactam (Figure 5A), *CcrA* and Cefepime (Figure 5B), *VIM* and Cefepime (Figure 5C), *CcrA* and Ceftazidime (Figure 5D), *blaOXA7* and Amikacin (Figure 5E), *OXA50* family and Ciprofloxacin (Figure 5F), *OXA51* family and Levofloxacin (Figure 5G), and *NMD* mutation was associated with Nitrofurantoin resistance (Figure 5H). This trend was most typical in the resistance to Amikacin in the presence of *blaOXA7*, which has not yet been reported. In particular, a sample (sample ID s8-35) was found to be Methicillin-resistant *Staphylococcus aureus* (MRSA), and showed a broad-spectrum drug resistance (including towards Ciprofloxacin, Levofloxacin, Oxacillin, Erythromycin, Benzylpenicillin,



**Figure 4** Correlation between the expression levels (values of reads) of different pathogen markers. (A) *Acinetobacter baumannii* and *Candida glabrata*, (B) *Acinetobacter baumannii* and *Klebsiella pneumoniae*, (C) *Mycoplasma pneumoniae* and *Candida albicans*, (D) *E. coli* and *Candida albicans*, (E) *Pseudomonas aeruginosa* and *Klebsiella pneumoniae*, (F) *Streptococcus pneumoniae* and *Klebsiella pneumoniae*, (G) *Klebsiella pneumoniae* and *Candida glabrata*, (H) *Enterobacter cloacae*, (I) *Klebsiella pneumoniae* and *E. coli*, (J) *Klebsiella pneumoniae* and *Streptococcus agalactiae*, (K) *E. coli* and *Streptococcus agalactiae*, (L) *E. coli* and *Streptococcus mutans*, (M) *EB virus* and *Enterococcus*, (N) *EB virus* and *E. coli*, (O) *Adenovirus* and *Haemophilus influenzae*, (P) *EB virus* and *pneumocystis*. EB, Epstein Barr





**Figure 5** Performance of sequencing in antimicrobial-resistance prediction. Detected samples were treated with multiple antibiotics, and were later divided into three groups: susceptible (S), intermediate (I), and resistant (R). The observed significant correlations between antimicrobial-resistance and drug-resistance mutations were as follows: (A) *OXA-58* family mutations and Piperacillin-Tazobactam, (B) *CcrA* and Cefepime, (C) *VIM* and Cefepime, (D) *CcrA* and Ceftazidime, (E) *blaOXA7* and Amikacin, (F) *OXA50* family and Ciprofloxacin, (G) *OXA51* family and Levofloxacin, (H) *NMD* mutation associated with Nitrofurantoin resistance.

Tetracycline, Moxifloxacin, Clindamycin, etc.). As expected, *mecA* mutant was detected in this case. However, for most of the positive results, the sample sizes of the intermediate groups were small, and more evidence is urgently required to validate and confirm the current conclusion. Collectively, sequencing results can predict antibiotic resistance in advance, especially for the use of Amikacin.

## Discussion

In the present study, we compared the detection results of the sequencing and SC techniques, and observed significant advantages of the sequencing method. First, sequencing has an overall satisfactory accuracy but can yield a markedly higher sensitivity for pathogen identification, especially in detecting *Streptococcus pneumoniae* and viruses. Also, for the first time, we identified some clear associations between different pathogen markers, which were seldom noticed in the traditional SC method. Finally, the sequencing approach exhibited a good performance in antibiotic resistance prediction.

PCR combined with sequencing had been used more than a decade ago for pathogen detection and drug resistance, particularly when targeting *Mycobacterium* (towards rifampin resistance) (17-20). In recent years, sequencing methods have been applied to detect viruses from sputum samples that might be associated with ALRI onset, without virus culture (21). More recently, there have been limited similar studies that used sequencing to identify pathogens. In 2018, scholars sequenced *M. tuberculosis* from 43 sputum samples by targeted DNA enrichment, and reported that direct sputum sequencing has the potential to provide more rapid comprehensive resistance detection than SC in clinical practice (22). In 2019, British researchers found that DNA directly sequenced from sputum samples had more within-sample diversity than that from culture, and resistance-associated variants could be probed in a timely manner. More importantly, genome sequencing may allow for the detection of pathogens that are not actively replicating (23). To date, sequencing-based platforms have been regarded as promising and user-friendly for pathogen detection and drug-resistant diagnosis (24), and have been applied in the detection and resistance assessment of tuberculosis, *influenza A virus*, and cystic fibrosis-related pathogens, among others (25-27).

Consistent with previous research, our results indicated that sequencing of sputum samples offers advantages in pathogen discrimination and also provides an early warning

of antimicrobial resistance. Some novel links between gene polymorphism and antibiotic resistance were observed in this study. Taking the most typical association between Amikacin and *blaOXA7* as an example, we found, for the first time, that this phenotype may confer an Amikacin resistance, which may help to develop a more appropriate treatment strategy.

An interesting finding of our study is that there were significant and novel associations between different pathogens based on the sequencing results, yet these were not noticed in the traditional SC method. However, some findings are theoretically reasonable and consistent with known reports. For example, the markers of *Enterobacter cloacae* and *Klebsiella pneumoniae* were highly positively correlated ( $r=0.4652$ ,  $P<0.0001$ ), and it has been reported that they share some common mechanisms in spreading drug resistance, such as producing *NDM* (28-30), *OXA48* (28) and *VIM1* (31-33). Further studies can be conducted to explore the deeper mechanisms of the comorbidity, and our observations provide a new perspective in warning of specific pathogenic infection when another pathogen is diagnosed.

Though sequencing of sputum samples has such advantages, there are some possible reasons that could cause the deficiencies of identification. First, we used just one pair of primers to detect each pathogen. It might be not enough to cover all the clinical strains of the pathogen. A larger panel which contains three primer pairs for each pathogen we targeted is being developed. It might work better in further studies.

As to the problem of high cost, the multiplex-primers-panel-driven targeted pathogen screening could be the answer. It would use only several thousands of sequencing reads to finish the job while mNGS needs millions. The great reduction of cost could make the approach much more acceptable. The multiplex-primers-panel approach is much more sensitive on genotyping comparing with mNGS, such as drug resistance detection. Also the multiplex-primers-panel has such advantages, it still needs to be performed in well-managed PCR laboratories due to the susceptibility of contamination. Except for a few limited drug resistance genes, the biggest problem in molecular drug resistance gene diagnosis is the lack of sufficient clinical research data between many drug resistance genes and bacterial resistance phenotypes, thus making it difficult for these drug resistance genes to serve as resistance markers in clinical application. For resistance genes in the form of plasmid, molecular biological detection method cannot determine if

the resistance genes came from disease-causing pathogens or nonpathogenic bacteria.

On all accounts, NGS exceeds traditional bacterial culture in many aspects. Though there still are much work to be done in the future, it's already proven to be a promising detection method to guide the treatment of acute lower respiratory infection.

## Conclusions

In conclusion, sequencing-based sputum metagenomics can reveal a profile of the lung pathogen microbiome. The sequencing method is offers both sufficient accuracy and significantly higher sensitivity in pathogen detection, and can be at least a complementary approach to traditional SC reporting. The sequencing technique also revealed some novel potential correlations between the presence of different pathogens, as well as new antimicrobial-resistant genes.

## Acknowledgments

*Funding:* This work was supported by Science and Technology Planning Project of Hebei Province of China (No. 17277790D).

## Footnote

*Reporting Checklist:* The authors have completed the MDAR checklist. Available at <http://dx.doi.org/10.21037/atm-20-7081>

*Data Sharing Statement:* Available at <http://dx.doi.org/10.21037/atm-20-7081>

*Conflicts of Interest:* All authors have completed the ICMJE uniform disclosure form (available at <http://dx.doi.org/10.21037/atm-20-7081>). The authors have no conflicts of interest to declare.

*Ethical Statement:* The authors are accountable for all aspects of the work in ensuring that questions related to the accuracy or integrity of any part of the work are appropriately investigated and resolved. This prospective study was approved by the Ethics Review Committee of the Second Hospital of Hebei Medical University (No. 2016150), and all the patients were given the informed consent before participated in. The procedures performed

involving human were in accordance with the Declaration of Helsinki (as revised in 2013).

*Open Access Statement:* This is an Open Access article distributed in accordance with the Creative Commons Attribution-NonCommercial-NoDerivs 4.0 International License (CC BY-NC-ND 4.0), which permits the non-commercial replication and distribution of the article with the strict proviso that no changes or edits are made and the original work is properly cited (including links to both the formal publication through the relevant DOI and the license). See: <https://creativecommons.org/licenses/by-nc-nd/4.0/>.

## References

1. Kini S, Kalal BS, Chandy S, et al. Prevalence of respiratory syncytial virus infection among children hospitalized with acute lower respiratory tract infections in Southern India. *World J Clin Pediatr* 2019;8:33-42.
2. Smith-Vaughan HC, Binks MJ, Beissbarth J, et al. Bacteria and viruses in the nasopharynx immediately prior to onset of acute lower respiratory infections in Indigenous Australian children. *Eur J Clin Microbiol Infect Dis* 2018;37:1785-94.
3. Nhung NTT, Schindler C, Dien TM, et al. Acute effects of ambient air pollution on lower respiratory infections in Hanoi children: An eight-year time series study. *Environ Int* 2018;110:139-48.
4. Deschaght P, De Baere T, Van Simaey L, et al. Comparison of the sensitivity of culture, PCR and quantitative real-time PCR for the detection of *Pseudomonas aeruginosa* in sputum of cystic fibrosis patients. *BMC Microbiol* 2009;9:244.
5. Schmalz M, Joysula M, Staddon JH, et al. Caspofungin resistant disseminated candidiasis in a 7-year-old girl with T cell lymphoma: a case report. *Transl Pediatr* 2018;7:63-6.
6. Rao C, Hu Z, Chen J, et al. Molecular epidemiology and antibiotic resistance of *Burkholderia pseudomallei* isolates from Hainan, China: A STROBE compliant observational study. *Medicine (Baltimore)* 2019;98:e14461.
7. Li S, Zhang R, Hu J, et al. Occurrence and removal of antibiotics and antibiotic resistance genes in natural and constructed riverine wetlands in Beijing, China. *Sci Total Environ* 2019;664:546-53.
8. Wang L, Su H, Hu X, et al. Abundance and removal of antibiotic resistance genes (ARGs) in the rearing environments of intensive shrimp aquaculture in South

- China. *J Environ Sci Health B* 2019;54:211-8.
9. Guan Y, Jia J, Wu L, et al. Analysis of Bacterial Community Characteristics, Abundance of Antibiotics and Antibiotic Resistance Genes Along a Pollution Gradient of Ba River in Xi'an, China. *Front Microbiol* 2018;9:3191.
  10. Setchanova L, Alexandrova A, Pencheva D, et al. Rise of multidrug-resistant *Streptococcus pneumoniae* clones expressing non-vaccine serotypes among children following introduction of the 10-valent pneumococcal conjugate vaccine in Bulgaria. *J Glob Antimicrob Resist* 2018;15:6-11.
  11. Raddaoui A, Tanfous FB, Chebbi Y, et al. High prevalence of multidrug-resistant international clones among macrolide-resistant *Streptococcus pneumoniae* isolates in immunocompromised patients in Tunisia. *Int J Antimicrob Agents* 2018;52:893-7.
  12. Nakano S, Fujisawa T, Ito Y, et al. Whole-Genome Sequencing Analysis of Multidrug-Resistant Serotype 15A *Streptococcus pneumoniae* in Japan and the Emergence of a Highly Resistant Serotype 15A-ST9084 Clone. *Antimicrob Agents Chemother* 2019;63:e02579-18.
  13. Shirmohammadlou N, Zeighami H, Haghi F, et al. Resistance pattern and distribution of carbapenemase and antiseptic resistance genes among multidrug-resistant *Acinetobacter baumannii* isolated from intensive care unit patients. *J Med Microbiol* 2018;67:1467-73.
  14. Jia XQ, Pang F, Chen JZ, et al. Prevalence and clinical distribution of multidrug-resistant bacteria (3537 isolates) in a tertiary Chinese hospital (January 2012-December 2013). *Pathol Biol (Paris)* 2015;63:21-3.
  15. Iregui M, Ward S, Sherman G, et al. Clinical importance of delays in the initiation of appropriate antibiotic treatment for ventilator-associated pneumonia. *Chest* 2002;122:262-8.
  16. Ibrahim EH, Sherman G, Ward S, et al. The influence of inadequate antimicrobial treatment of bloodstream infections on patient outcomes in the ICU setting. *Chest* 2000;118:146-55.
  17. Patnaik M, Liegmann K, Peter JB. Rapid detection of smear-negative *Mycobacterium tuberculosis* by PCR and sequencing for rifampin resistance with DNA extracted directly from slides. *J Clin Microbiol* 2001;39:51-2.
  18. Kim BJ, Lee KH, Park BN, et al. Detection of rifampin-resistant *Mycobacterium tuberculosis* in sputa by nested PCR-linked single-strand conformation polymorphism and DNA sequencing. *J Clin Microbiol* 2001;39:2610-7.
  19. Suresh N, Singh UB, Gupta C, et al. Rapid detection of rifampin-resistant *Mycobacterium tuberculosis* directly from stained sputum smears using single-tube nested polymerase chain reaction deoxyribonucleic acid sequencing. *Diagn Microbiol Infect Dis* 2007;58:217-22.
  20. Yam WC, Tam CM, Leung CC, et al. Direct detection of rifampin-resistant *Mycobacterium tuberculosis* in respiratory specimens by PCR-DNA sequencing. *J Clin Microbiol* 2004;42:4438-43.
  21. Ren X, Yang F, Hu Y, et al. Full genome of influenza A (H7N9) virus derived by direct sequencing without culture. *Emerg Infect Dis* 2013;19:1881-4.
  22. Doyle RM, Burgess C, Williams R, et al. Direct Whole-Genome Sequencing of Sputum Accurately Identifies Drug-Resistant *Mycobacterium tuberculosis* Faster than MGIT Culture Sequencing. *J Clin Microbiol* 2018;56:e00666-18.
  23. Nimmo C, Shaw LP, Doyle R, et al. Whole genome sequencing *Mycobacterium tuberculosis* directly from sputum identifies more genetic diversity than sequencing from culture. *BMC Genomics* 2019;20:389.
  24. Dolinger DL, Colman RE, Engelthaler DM, et al. Next-generation sequencing-based user-friendly platforms for drug-resistant tuberculosis diagnosis: A promise for the near future. *Int J Mycobacteriol* 2016;5 Suppl 1:S27-8.
  25. Feigelman R, Kahlert CR, Baty F, et al. Sputum DNA sequencing in cystic fibrosis: non-invasive access to the lung microbiome and to pathogen details. *Microbiome* 2017;5:20.
  26. Hu Y, Zhang Y, Ren X, et al. A case report demonstrating the utility of next generation sequencing in analyzing serial samples from the lung following an infection with influenza A (H7N9) virus. *J Clin Virol* 2016;76:45-50.
  27. Nimmo C, Doyle R, Burgess C, et al. Rapid identification of a *Mycobacterium tuberculosis* full genetic drug resistance profile through whole genome sequencing directly from sputum. *Int J Infect Dis* 2017;62:44-6.
  28. Haciseyitoglu D, Dokutan A, Abulaila A, et al. The First *Enterobacter cloacae* Co-Producing NDM and OXA-48 Carbapenemases and Interhospital Spread of OXA-48 and NDM-Producing *Klebsiella pneumoniae* in Turkey. *Clin Lab* 2017;63:1213-22.
  29. Khan AU, Nordmann P. NDM-1-producing *Enterobacter cloacae* and *Klebsiella pneumoniae* from diabetic foot ulcers in India. *J Med Microbiol* 2012;61:454-6.
  30. Alcántar-Curiel MD, Fernandez-Vazquez JL, Toledano-Tableros JE, et al. Emergence of IncFIA Plasmid-Carrying blaNDM-1 Among *Klebsiella pneumoniae* and *Enterobacter cloacae* Isolates in a Tertiary Referral Hospital in Mexico. *Microb Drug Resist* 2019;25:830-8.

31. Sianou E, Kristo I, Petridis M, et al. A cautionary case of microbial solidarity: concurrent isolation of VIM-1-producing *Klebsiella pneumoniae*, *Escherichia coli* and *Enterobacter cloacae* from an infected wound. *J Antimicrob Chemother* 2012;67:244-6.
32. Coelho A, Piedra-Carrasco N, Bartolome R, et al. Role of IncHI2 plasmids harbouring blaVIM-1, blaCTX-M-9, aac(6)-Ib and qnrA genes in the spread of multiresistant *Enterobacter cloacae* and *Klebsiella pneumoniae* strains in different units at Hospital Vall d'Hebron, Barcelona, Spain. *Int J Antimicrob Agents* 2012;39:514-7.
33. Miró E, Segura C, Navarro F, et al. Spread of plasmids containing the bla(VIM-1) and bla(CTX-M) genes and the qnr determinant in *Enterobacter cloacae*, *Klebsiella pneumoniae* and *Klebsiella oxytoca* isolates. *J Antimicrob Chemother* 2010;65:661-5.

(English Language Editor: A. Kassem)

**Cite this article as:** Chao L, Li J, Zhang Y, Pu H, Yan X. Application of next generation sequencing-based rapid detection platform for microbiological diagnosis and drug resistance prediction in acute lower respiratory infection. *Ann Transl Med* 2020;8(24):1644. doi: 10.21037/atm-20-7081