

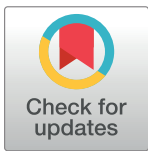
RESEARCH ARTICLE

Water-stress physiology of *Rhinanthus alectorolophus*, a root-hemiparasitic plant

Petra Světlíková^{1*}, Tomáš Hájek^{1,2}, Jakub Těšitel^{1,3}

1 Faculty of Science, University of South Bohemia, České Budějovice, Czech Republic, **2** Institute of Botany of the Czech Academy of Sciences, Třeboň, Czech Republic, **3** Department of Botany and Zoology, Masaryk University, Brno, Czech Republic

* petra.svetlikova@gmail.com



Abstract

Root-hemiparasitic plants of the genus *Rhinanthus* acquire resources through a water-wasting physiological strategy based on high transpiration rate mediated by the accumulation of osmotically active compounds and constantly open stomata. Interestingly, they were also documented to withstand moderate water stress which agrees with their common occurrence in rather dry habitats. Here, we focused on the water-stress physiology of *Rhinanthus alectorolophus* by examining gas exchange, water relations, stomatal density, and biomass production and its stable isotope composition in adult plants grown on wheat under contrasting (optimal and drought-inducing) water treatments. We also tested the effect of water stress on the survival of *Rhinanthus* seedlings, which were watered either once (after wheat sowing), twice (after wheat sowing and the hemiparasite planting) or continuously (twice and every sixth day after that). Water shortage significantly reduced seedling survival as well as the biomass production and gas exchange of adult hemiparasites. In spite of that drought-stressed and even wilted plants from both treatments still considerably photosynthesized and transpired. Strikingly, low-irrigated plants exhibited significantly elevated photosynthetic rate compared with high-irrigated plants of the same water status. This might relate to biochemical adjustments of these plants enhancing the resource uptake from the host. Moreover, low-irrigated plants did not acclimatize to water stress by lowering their osmotic potential, perhaps due to the capability to tolerate drought without such an adjustment, as their osmotic potential at full turgor was already low. Contrary to results of previous studies, hemiparasites seem to close their stomata in response to severe drought stress and this happens probably passively after turgor is lost in guard cells. The physiological traits of hemiparasites, namely the low osmotic potential associated with their parasitic lifestyle and the ability to withstand drought and recover from the wilting likely enable them to grow in dry habitats. However, the absence of osmotic adjustment of adults and sensitivity of seedlings to severe drought stress demonstrated here may result in a substantial decline of the hemiparasitic species with ongoing climate change.

OPEN ACCESS

Citation: Světlíková P, Hájek T, Těšitel J (2018) Water-stress physiology of *Rhinanthus alectorolophus*, a root-hemiparasitic plant. PLoS ONE 13(8): e0200927. <https://doi.org/10.1371/journal.pone.0200927>

Editor: Ricardo Aroca, Estacion Experimental del Zaidin, SPAIN

Received: January 16, 2018

Accepted: July 5, 2018

Published: August 1, 2018

Copyright: © 2018 Světlíková et al. This is an open access article distributed under the terms of the [Creative Commons Attribution License](https://creativecommons.org/licenses/by/4.0/), which permits unrestricted use, distribution, and reproduction in any medium, provided the original author and source are credited.

Data Availability Statement: All relevant data are within the paper and its Supporting Information files.

Funding: JT was supported by the Czech Science Foundation project [14-36079G] (Centre of Excellence PLADIAS). TH was supported by a long-term research development project of the Institute of Botany, Czech Academy of Sciences [RVO 67985939]. The funders had no role in study design, data collection and analysis, decision to publish, or preparation of the manuscript.

Competing interests: The authors have declared that no competing interests exist.

Introduction

Plants rely on water for their structure, maintaining a positive pressure (turgor) against their cell walls [1]. Water shortage induces significant stress in plants; stomatal closure and turgor loss are accompanied by suppression of growth and certain physiological processes such as photosynthesis and transport of assimilates [1,2]. Plant water status is usually described by water potential, a measure of water availability in the system (Ψ ; [1,2]). One component of Ψ is osmotic potential (Ψ_{π}), the water potential of a solution expressing the molar concentration of dissolved substances in the cell. The examination of water relations allows estimating a number of physiological parameters involved in plant adjustment to water stress. In general, plants adjust to water stress by either decreasing Ψ_{π} via accumulation of osmotically active compounds or increasing the elasticity of their cell walls. While the first strategy leads to the increase of turgor and facilitates water uptake from drier soil, the second strategy enables plants to store more water at full turgor, both of them provide plants with the ability to lose more water without losing turgor [1].

Autotrophic plants acquire water directly and exclusively from the surrounding environment but this is not the case of parasitic and hemiparasitic plants. Root hemiparasites acquire virtually all water and mineral nutrients from their hosts through haustorial connection to vascular bundles in host roots [3,4]. In contrast, organic carbon is acquired partly autotrophically from own photosynthetic activity with the host contributing a variable fraction of organic carbon used by the hemiparasite [5,6]. This mixotrophic resource acquisition strategy [7] is highly efficient in *Rhinanthus* species from the Rhinanthoid clade of the *Orobanchaceae* family as it is based on an open direct xylem-to-xylem connection with hosts [8,9]. It was shown to be driven in particular by comparatively high day- and night- transpiration rates in hemiparasites [10–12], lowering thus their water potential to highly negative values and acting as a strong sink [13]. Similarly to all parasitic plants, *Rhinanthus* spp. accumulate osmotics such as sugar alcohols inside cells to maintain low water potential conditions [13,14], which further facilitates the resource flow through haustoria. Moreover, stomata of some hemiparasites are irresponsive to abscisic acid (ABA) and remain permanently open, even under severe water stress [12,15]. Stomatal transpiration and high content of osmotically active compounds are not the only means by which the solute flux is drawn into hemiparasite. Several species from the Rhinanthoid clade actively secrete excess water from hydathode trichomes present on the abaxial leaf sides [16–18] to make the resource acquisition from the host even more efficient.

The genus *Rhinanthus* comprises at least 25 annual species occurring in northern hemisphere [19]. Some of them are most commonly found and studied root-hemiparasites in Europe, colonizing grassland habitats of low to moderate productivity and water availability [19–22]. The performance of *Rhinanthus* spp. was demonstrated to depend on water availability in a non-trivial way. Depending on the ecological context, established *Rhinanthus* plants may be positively or negatively affected by decreased water availability [6,23]. This is rather surprising considering their water-wasting physiological strategy of resource acquisition based on high transpiration. However, experimental evidence [6,23] and occurrence of stable populations of *Rhinanthus* spp. in dry grasslands [22] indicates that they are able to withstand at least moderate water stress. Moreover, wilted *Rhinanthus* fully recovers from severe water stress within several hours after re-watering [24]. This points to the ability to tolerate water stress, even though their stomata do not close under increased ABA concentration. Surprisingly, studies evaluating the water-stress physiology of root hemiparasites are missing.

Here, we examined water-stress physiology of flowering *R. alectorolophus* (Scop.) Pollich using a manipulative experiment with high (200 mL) and low (100 mL) irrigation levels, monitoring gas exchange, water relations, stomatal density, and biomass production and its stable

isotope composition. We also focused on seedling survival under water stress conditions. The seedlings were watered either once (after wheat sowing), twice (after wheat sowing and the hemiparasite planting) or continuously (twice and every sixth day after that). We hypothesized that i) the survival of hemiparasite seedlings is negatively affected by drought stress, ii) wilted plants of flowering hemiparasites still considerably photosynthesize and transpire, iii) low-irrigated plants osmotically adjust to long-term water deficiency and therefore iv) their photosynthesis and transpiration are suppressed at more negative Ψ_{π} than in high-irrigated plants, v) stable C and O isotopes and stomatal density differ between treatments reflecting the acclimation of water-related physiological processes to prolonged water stress.

Materials and methods

Plant material

Rhinanthus alectorolophus is an annual hemiparasitic plant of the family Orobanchaceae [25,26]. It grows in open habitats such as meadows and road verges where it parasitizes wide range of host species. *R. alectorolophus* reaches an average height of 30 cm and flowers from May to July [27–29]. It used to be considered as an agricultural pest in Central Europe infecting cereal crops [28] and can be easily grown on wheat or maize.

R. alectorolophus seeds were collected from a natural population near Nenkovice, Czech Republic (49°0'19.8"N, 16°59'54.1"E) from private land as a part of more extensive research conducted at the site. We obtained permission to collect seeds from both the owner and leaseholder of the land where the collection was done. Ripe capsules of *R. alectorolophus* were collected by hand in paper bags. The collected material was left to dry in laboratory under ambient temperature for two weeks to release seeds from the capsules. Seeds were further stored at ambient temperature and air humidity until the start of the experimental work. Seeds of wheat (*Triticum aestivum*), which was used as a host species, were obtained from the Krásná Hora nad Vltavou collective farm, Haklovy Dvory, Czech Republic.

Growth chamber experiments

The experiments were conducted in a growth chamber from January to March 2016. Pre-germinated seeds of wheat were sown in 130 0.8L-pots filled with a mixture of sand and peat (1:1, v:v ratio). All pots contained 0.5 g Osmocote Exact Standard 5–6M fertilizer per liter of substrate and were well watered (200 mL of water/pot). The diurnal light cycle was set to 12 h light/12 h dark. Temperature ranged from 15–17 (dark) to 17–20°C (light). Metal halide lamps provided photosynthetically active radiation (PAR) flux of 200–600 $\mu\text{mol m}^{-2} \text{s}^{-1}$ (depending on spatial position). Young seedlings (3 per pot) of the hemiparasite pregerminated on Petri dishes kept at 4°C for three months were transplanted to 110 pots two days after wheat planting. Of these, only a single plant was kept for the experiment while excessive seedlings were removed after a week. The pots were randomly relocated within the chamber table once a week to filter out possible heterogeneity in non-treatment cultivation conditions (mainly PAR flux).

Three contrasting water treatments were established in 30 parasitized pots to study the effect of drought on the survival of *Rhinanthus* seedlings. Ten pots (hereafter referred to as A-pots) were watered only once (after wheat sowing), ten pots (hereafter referred to as B-pots) were watered twice (after wheat sowing and the hemiparasite planting), and ten pots (hereafter referred to as C-pots) were watered as B-pots and every sixth day after that.

The rest of pots ($n = 100$) were used to study the physiological response of *Rhinanthus* adults to long-term water stress. Twenty pots served as a non-parasitized control. Two water regimes were established after *Rhinanthus* attachment to the host (indicated by rapid leaf

expansion of *Rhinanthus*; [30]). High irrigation pots (W+) and low irrigation pots (W-) received 200 and 100 mL of water every fifth to seventh day, respectively. The intervals between irrigation events were determined on the basis of visibly dry soil in W-pots and clear marks of wilting of respective plants. Both W+ and W-pots were irrigated for entire course of the experiment by isotopically constant source water to minimize its effect on the proportion of oxygen isotopes in plant final biomass [31].

Seedling survival and soil moisture measurements

Survival of *R. alectorolophus* seedlings in A, B, and C-pots was daily documented for 17 consecutive days. Dry or heavily-wilted seedlings were assumed to be dead. In addition to that, we measured the relative water content (RWC) of soil in the pots using an HH2 Moisture Meter with an SM200 sensor (Delta-T Devices Ltd, Cambridge, UK). Three measurements per pot were taken every day and their averages are presented. Only pots with seedlings which were considered as alive on the previous day were measured.

Physiological measurements

Photosynthetic and transpiration rates were measured 46–63 d after *Rhinanthus* transplant at the irradiance of $500 \mu\text{mol m}^{-2} \text{s}^{-1}$ on intact leaves of flowering hemiparasites (13× W+ and 12× W-) with a Li-6400 Portable Photosynthetic System (LI-COR, Lincoln, USA). The measurements were conducted between 0900 and 1930h on partially dehydrated plants (at least 2 d after the last watering), hereafter referred to as drought-stressed plants. Some of these plants were wilted indicating that they have already undergone turgor pressure loss. Chamber CO_2 concentration and block temperature were set to $400 \mu\text{mol mol}^{-1}$ and 20°C , respectively. The relative air humidity inside the Li-6400 chamber was controlled at 60–75%. After finishing the measurements, all measured plants were watered and covered with a plastic bag until additional gas-exchange measurements of fully water-saturated plants, hereafter referred to as water-saturated plants, on the following day. These measurements were done in a same way as previous ones and one leaf per plant was sampled for osmotic potential ($\Psi_{\pi \text{ gas-exchange}}$) determination after finishing the measurements. Two plants (1× W+ and 1× W-) did not recover from water stress experienced during the first measurements and were therefore excluded from the data set.

The actual $\Psi_{\pi \text{ gas-exchange}}$ of sampled plant parts was measured using thermocouple psychrometry [32]. Leaf samples were cut, immediately sealed in a 2-mL syringe, and frozen at -20°C . The samples were allowed to thaw for maximum 60 min before the start of the measurements. The freeze-thaw cycle disrupted the cell membranes and allowed squeezing the cytoplasm. About 7 μL of the fluid was pipetted onto a cellulose filter paper disc, placed in a 1.25 mm deep sample holder, and enclosed inside the C-52 sample chamber linked to a Wescor HR-33T microvoltmeter (Wescor Electronics, Logan, UT, USA). The air Ψ in the sample chamber equilibrated within 5 min. Measurements were calibrated using 0.3 M NaCl ($\Psi_{\pi} = -1.37 \text{ MPa}$).

The second part of parasitized pots (10× W+ and 9× W-) was subjected 48–62 d after *Rhinanthus* transplant to water potential (Ψ) measurements using a pressure chamber (The Plant Water Status Console, Model 3000; Soil Moisture Equipment Corp., Santa Barbara, USA). The pressure-chamber method measures the decline in leaf Ψ with ongoing leaf dehydration [32–34] enabling construction of the pressure-volume (p-v) curves and Höfler diagrams (Figure A in S1 Fig) providing detailed information about the water relations of measured plants. Upper part (up to 20 cm) of fully water-saturated plants were gently blotted up with cotton sheets to remove droplets of external water, cut, immediately wrapped in stretch film to prevent water

loss via transpiration during measurements, weighed, and sealed into the pressure chamber. The pressure–volume data (as described in detail below) were collected using a “squeeze method” to prevent damage to the soft herbal tissue. Briefly, the water loss was induced by pressurization of the chamber with synthetic air and the sap squeezed at each balance pressure (steps of about 0.2 MPa) was collected and weighed, while the plant remained enclosed in the chamber [33].

Evaluation of pressure–volume curves

We plotted a p–v curve for each measured plant. The p–v curves show the relationship between the inverse of the balance pressure and the cumulative volume of cell sap squeezed, which was then replaced by RWC. Using the “squeeze method” instead of repeated pressurizing was the only way how to avoid mechanical damage to the soft herbal tissue; however, the method generated some identifiable artefacts that required further data processing. The values of RWC after turgor loss were slightly overestimated in most samples because not all the water had been squeezed from the plant before switching to higher balance pressure. This overestimation resulted in steeper slope of the linear part of p–v curves (representing Ψ_{π}) and thus an overestimated intercept with x-axis (RWC) and underestimated Ψ_{π} at full turgor ($\Psi_{\pi FT}$; at RWC = 1). The intercept with x-axis denotes the volume of apoplastic water (RWC_{AW}), which usually represents 3–50% of the total volume of water in a leaf [32]. Our values ranged between unrealistically high 35 and 74%, representing unlikely high variability in single species. To reduce these artefacts, we fixed the intercept of all curves at RWC of 23.1% (Figure B in S1 Fig). This value corresponded to such slopes of the linear parts of all the p–v curves that yield mean $\Psi_{\pi FT}$ of –1.38 MPa (y-intercept in Figure B in S1 Fig), which is the mean value measured by thermocouple psychrometry in water-saturated leaf samples collected before pressure-chamber measurements (thermocouple psychrometry measurements were thus used to calibrate the pressure-chamber measurements). Solver module of MS Excel was used to find the slopes. Moreover, as the turgor ceased very slowly (hyperbolically), it was difficult to determine the turgor loss point accurately (Figure B in S1 Fig). In order to reduce the variability due to this inaccuracy, we defined a corrected turgor loss point (TLP_{cor}) so that Ψ_{π} at TLP_{cor} ($\Psi_{\pi TLP_{cor}}$) and RWC at TLP_{cor} ($RWC_{TLP_{cor}}$) corresponded to the values at 10% of full turgor (Figure A in S1 Fig). The modulus of elasticity (ϵ) was defined as a slope of the turgor–RWC relationship (between full turgor and the point preceding TLP_{cor}).

Stable isotope analyses

Above-ground biomass of flowering hemiparasites and parasitized wheat ($n = 44$, $23 \times W+$, $21 \times W-$) were harvested after finishing the measurements, i.e. 48–63 d after *Rhinanthus* planting. Above-ground biomass of control wheat ($n = 20$, $10 \times W+$, $10 \times W-$) were harvested 62 d after the planting. Biomass samples were dried at 80°C for 48 hours and weighed. Newly-grown leaves of both species were sampled to separate paper bags from 20 parasitized pots and all controls, dried, ball-milled, and embedded in tin capsules for stable isotope analysis of carbon.

Stable isotopes of oxygen were analyzed from α -cellulose isolated from the subset of these samples. The isolation of α -cellulose started by placing milled leaves (30–50 mg) in 15-mL plastic centrifuge tubes and washing them in 8 mL of 80% acetone for 15 min. The tubes were then centrifuged (12 min at 4000 $\times g$), the pellet was resuspended in 8 mL of distilled water, and the tubes were placed to water bath at 75°C. After addition of 80 μ L of glacial acetic acid and 160 μ L of 25% sodium chlorite, the tubes were incubated for 1 h and the addition of sodium chlorite was repeated. After 2 h, the addition of acetic acid and two subsequent

additions of sodium chlorite were repeated and the tubes were incubated once more for 1+2 h. The tubes were vortexed every 30 min during the total 6 h of extraction. Cooled tubes were repeatedly centrifuged and washed in distilled water to obtain clean holocellulose pellet, which was subsequently resuspended in 8 mL of 4.2 M KOH and kept at 22°C for 2 h. Finally, the tubes were centrifuged and the pellet of α -cellulose was successively washed with 2% HCl, water, and acetone, dried at 50°C, and weighted to silver capsules.

The stable isotope analyses were conducted with a PDZ Europa ANCA-GSL elemental analyzer interfaced to a PDZ Europa 20–20 isotope ratio mass spectrometer (Sercon Ltd., Cheshire, UK) at the Stable Isotope Facility at University of California, Davis, USA. Isotopic compositions of the biomass samples were expressed as the δ values reflecting the isotopic difference between the sample and relevant international standards, V-PDB (Vienna PeeDee Belenite) for carbon and SMOW (Standard Mean Ocean Water) for oxygen.

Stomatal density

Leaves ($n = 14$, $9 \times W+$, $5 \times W-$) and bracts ($n = 16$, $9 \times W+$, $7 \times W-$) of the hemiparasite were examined for stomatal density. Stomatal impressions of the adaxial and abaxial leaf and bract sides were taken by transparent nail polish and observed on a slide by an Olympus CX41 Microscope (Olympus Imaging America Inc., Center Valley, Pennsylvania, USA) and INFINITY1-3C 3.1 MP CMOS Color Camera (Lumenera Corp., Ottawa, Canada). Stomata were counted at $200\times$ magnification from 5 microscopic fields per leaf/bract side of a plant. The number of stomata on the area of 0.325 mm^2 corresponding to an examined microscopic field was converted to the number of stomata per mm^2 . It should be noted, that stomatal density was difficult to analyze, in particular due to the presence of hydathode trichomes on abaxial bract and leaf sides.

Statistical analysis

Seedling survival was analyzed by estimating the survival curves by Kaplan-Meier survival function [35] for each water treatment. Comparison between the treatments was performed by a Mantel-Haenszel test [36]. Biomass and isotope data were analyzed using linear models. The biomass data of *Rhinanthus* adults were fitted by a linear model with day after transplant as a predictor to estimate their biomass 60 d after *Rhinanthus* transplant (i.e. when the control pots were harvested). This estimate was used as a response in further statistical modeling of the hemiparasite biomass to minimize the effect of different harvest dates. We did not apply this correction to parasitized wheat due to low correlation of its biomass with harvest day, presumably caused by differential growth dynamics in individual treatments. Biomass data were logarithmically transformed before analysis. We used linear models to test the effects of irrigation treatment, infection by the hemiparasite and their interaction on above-ground-biomass production and stable-isotopic composition of the wheat host. Linear models were also used to test the effect of irrigation treatment on the same biomass parameters of the hemiparasite. Gas-exchange parameters were tested by linear mixed-effect models containing irrigation treatment, osmotic potential, and their interaction as fixed-effect predictors and plant identity as a random factor. Stomatal densities of the hemiparasite were tested separately for adaxial and abaxial sides by linear mixed-effect models with irrigation treatment, bract vs. leaf sample, and their interaction as a fixed-effect predictors and plant identity as a random factor. The differences in water-relation parameters were analyzed by two-tailed t-tests. All statistical analyses were conducted and visualized in R software [37], R packages *survival* and *nlme* were used for survival analysis and linear mixed-effect models.

Results

Seedling survival

Survival of parasite seedlings differed among pots ($\chi^2 = 34.9$, $df = 2$, $P < 0.001$). The seedlings from A-pots started to die 8 d after single watering event (6 d after parasite transplant) at average soil RWC of 20.1% and they were not able to survive more than 18 d after single watering event (2 d before the day 0; Fig 1). Compared with A-pots, B-pot seedlings started to die 15 d

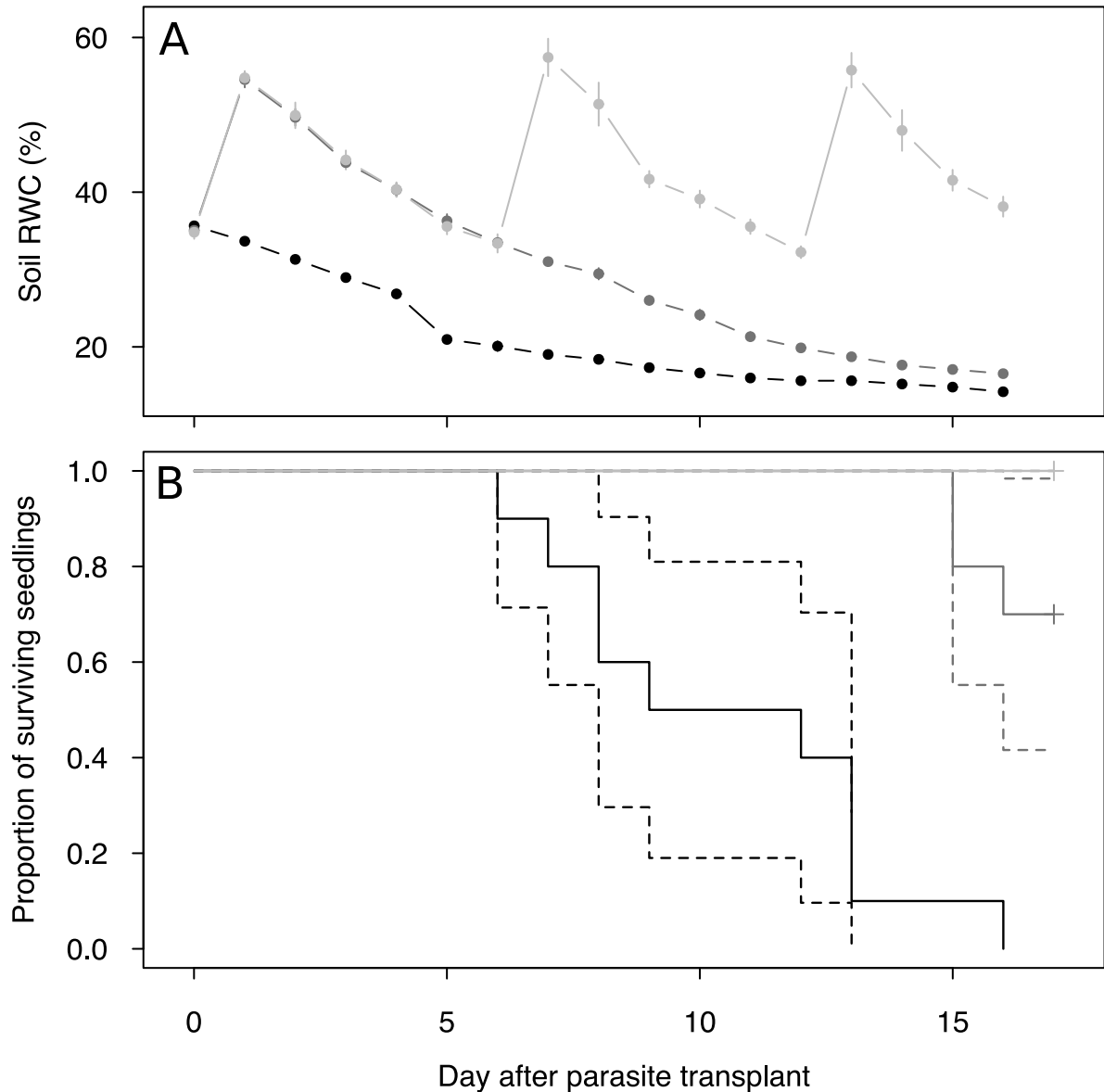


Fig 1. Soil relative water content (A, soil RWC) and survival of hemiparasitic *Rhinanthus alectorolophus* 0–17 days after its transplant (B) to the pots with the host, *Triticum aestivum*. Black lines represent pots watered only once (after host planting, A-pots), dark grey represents pots watered twice (after host and parasite planting, B-pots), and light grey represents pots watered regularly. Day averages of four soil RWC measurements per pot \pm 1.96 standard error are displayed (A). Dashed lines represent 95% confidence intervals (B). $n = 10$ for each water treatment in the beginning of the experiment.

<https://doi.org/10.1371/journal.pone.0200927.g001>

Table 1. Summary of linear models describing the effects of irrigation treatment and infection by the hemiparasite on host *Triticum aestivum* and hemiparasite *Rhizanthus alectorolophus* above-ground biomass production and their stable-isotopic composition.

Effect	Host				Hemiparasite		
	Biomass (parasitized and control)	Control biomass	$\delta^{13}\text{C}$	$\delta^{18}\text{O}$	Biomass	$\delta^{13}\text{C}$	$\delta^{18}\text{O}$
Irrigation treatment	** W+	*** W+	*** W-	*** W-	*** W+	** W-	+ W-
Infected	*** ↓		*** ↑	n.s.			
Treatment × Infected	n.s.		n.s.	n.s.			

*** $P \leq 0.001$

** $P \leq 0.01$

+ $P = 0.051$.

Arrows indicate positive (up) and negative (down) relationship between the response variable and related effect. W+/W- indicate the irrigation treatment with higher values of response variables. Factor Infected represents the effect of parasitic infection on host parameters. $\delta^{13}\text{C}$ and $\delta^{18}\text{O}$ represent the isotopic composition of host overall biomass and hemiparasite biomass. n.s. indicates non-significant terms omitted from the final models. The effects not tested for a particular variable are indicated by light grey. More information in full anova tables (S1 and S2 Tables).

<https://doi.org/10.1371/journal.pone.0200927.t001>

after the second watering event (indicated by an increase in soil RWC from 0 d to 1 d; Fig 1) at 17.1% of soil RWC. Second watering event delayed the onset of survival decline by 9 d. All seedlings from non-stressed C-pots survived 17 d after their transplant, when the experiment was terminated (Fig 1B). Host plants showed no distinctive signs of water deficiency and all of them survived till the harvesting times.

Biomass

Above-ground biomass production of flowering parasites, as well as control and parasitized host from W-pots was significantly lowered by long-term water stress (Table 1; Fig 2; S1 and S2 Tables). Harvest day had no significant effect on dry mass weight of the host (S1 Table). Parasitism and irrigation treatment markedly affected host biomass (Table 1; S1 Table). Parasitized hosts visibly suffered from water shortage, especially under W-treatment, causing many of their leaves to dry (Figures A-D in S2 Fig).

Physiological measurements

Rates of photosynthesis and transpiration were positively correlated with leaf osmotic potential ($\Psi_{\pi \text{ gas-exchange}}$; $t_{22} = 7.18$; $P < 0.001$; $t_{22} = 6.51$; $P < 0.001$, respectively; Fig 3; S3 Table). Regardless the irrigation treatment, both processes were significantly lowered in drought-stressed plants (linear models; $t_{22} = -5.60$, $P < 0.001$ and $t_{22} = -7.38$, $P < 0.001$ for photosynthesis and transpiration, respectively) compared with water-saturated plants (S4 Tab), which had greater $\Psi_{\pi \text{ gas-exchange}}$ (Table 2). Drought-stressed plants displayed low ψ_{π} , but still exhibited substantial rates of photosynthesis and transpiration (Table 2). Moreover, photosynthetic rate was higher in the plants grown under W-treatment compared with those of similar ψ_{π} from the W+ treatment (Table 2; Fig 3; S3 Table). We did not find such relationship for transpiration rate (Table 2; Fig 3; S3 Table). Measured plants from contrasting irrigation treatments did not significantly differ in their average $\Psi_{\pi \text{ gas-exchange}}$ (-1.70 (W+) and -1.76 (W-)).

Pressure-chamber measurements showed no apparent difference between W+ and W- plants in their water-relation parameters (Table 2; Figures A and B in S1 Fig), including $\psi_{\pi \text{ FT}}$, $\psi_{\pi \text{ TLPcor}}$, $\text{RWC}_{\text{TLPcor}}$, and ϵ . These measurements enabled us to determine actual water status of the plants, in which gas-exchange was measured, by projecting $\psi_{\pi \text{ TLPcor}}$ into Fig 3. It is clear from the figure that even wilted plants ($\Psi_{\pi \text{ gas-exchange}} < \psi_{\pi \text{ TLPcor}}$) were still able to carry out photosynthesis and transpiration.

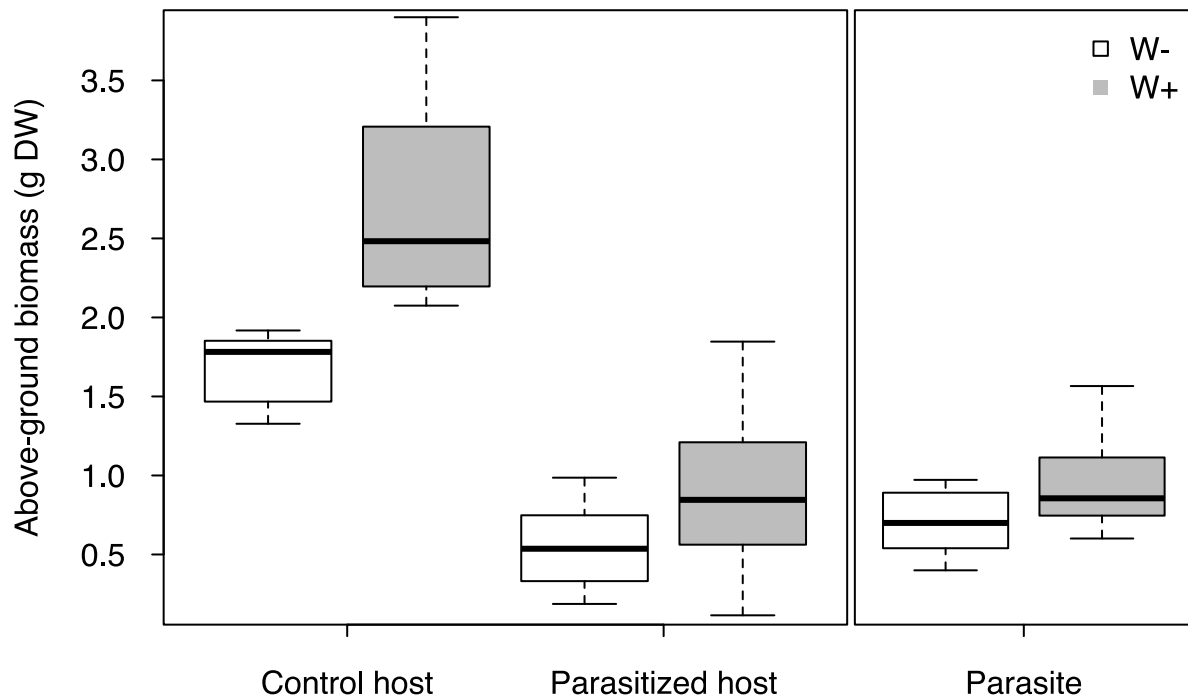


Fig 2. Above-ground biomass of control and parasitized host, *Triticum aestivum*, and the hemiparasite, *Rhinanthus alectorolophus*, grown under high (W+) and low irrigation treatments (W-). n = 10 for W+ and W-unparasitized control pots, n = 21 (W+) and n = 23 (W-) for parasitized pots.

<https://doi.org/10.1371/journal.pone.0200927.g002>

Despite the absence of osmotic adjustments, wilted hemiparasites recovered very fast from severe drought stress after re-watering (Figures B and D in S2 Fig). Photosynthetic and transpiration rates of W+ plants increased on average by 34 and 55% approximately 24 h after re-watering, while it was 55 and 222% in W-plants, respectively (Table 2). Osmotic potential of hemiparasites of W+ and W-increased on average by 28 and 31% (Table 2), respectively. Interestingly, there was a significant interactive effect of irrigation treatment and water saturation (S4 Table), which might indicate a physiological adjustment to water stress in W-hemiparasites.

Stable isotopes and stomatal density

Biomass of the parasite from W-irrigation treatment was significantly enriched in ^{13}C , but only slightly in ^{18}O (Table 1; Fig 4) compared with its biomass from W+ treatment. Biomass of the host from W-treatment was significantly enriched in both ^{13}C and ^{18}O (Table 1; Fig 4). $\delta^{13}\text{C}$ of host biomass was in addition positively affected by parasitism (Table 1). Biomass of the parasite was less enriched in ^{13}C and ^{18}O than the biomass of parasitized hosts regardless of treatment ($t_{19} = -28.39, P < 0.001$; $t_{19} = -2.14, P = 0.046$; S5 Table).

Plants grown under contrasting water treatments did not significantly differ in the density of stomata on their leaves and bracts (Figures A and B in S3 Fig; S6 Table).

Discussion

Both parts of our experimental work focusing on seedlings and adults of hemiparasitic *R. alectorolophus* brought novel insights into understanding of the water-stress ecophysiology of root-hemiparasitic plants. For the first time we experimentally showed the sensitivity of

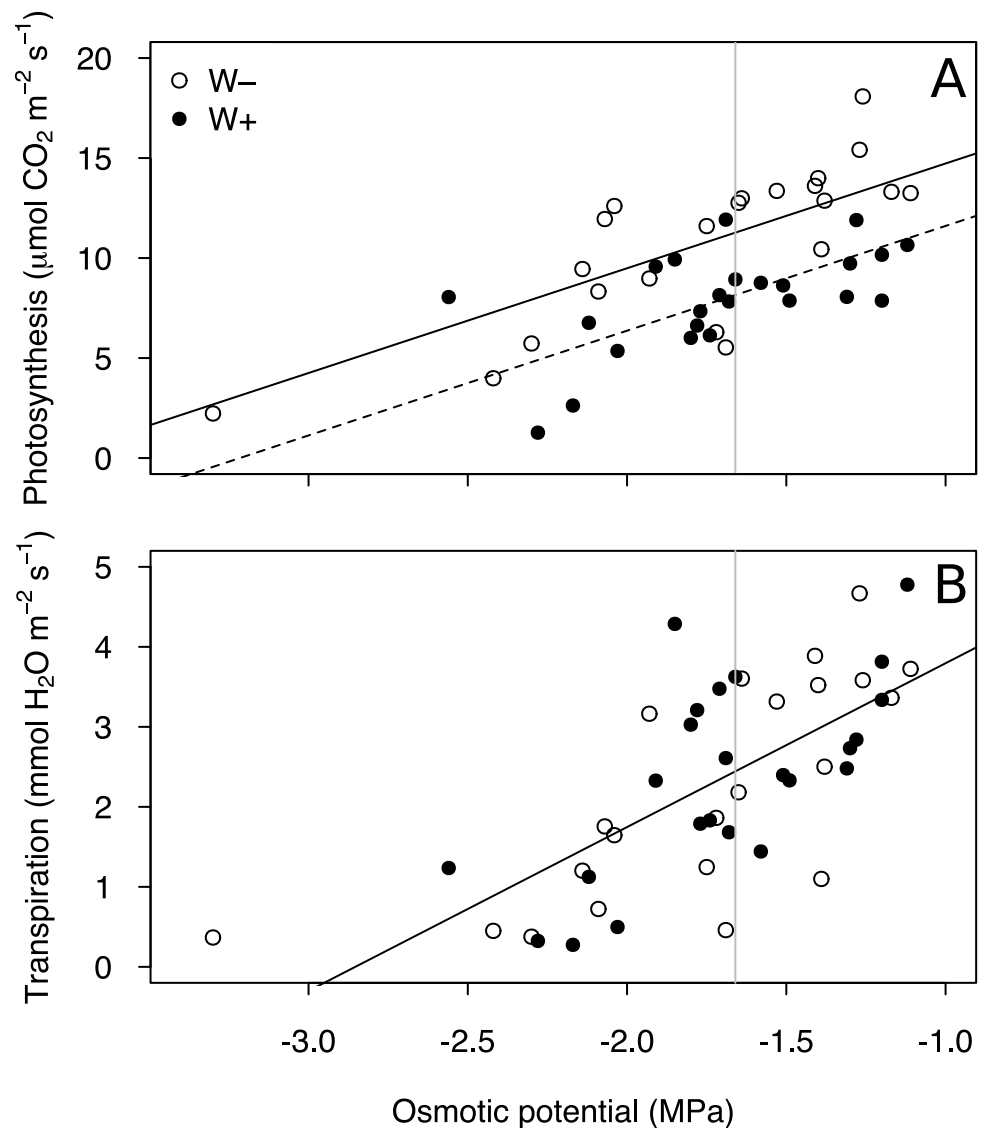


Fig 3. Photosynthetic (A) and transpiration rates (B) at the irradiance of $500 \mu\text{mol m}^{-2} \text{s}^{-1}$ in the leaves of flowering *Rhinanthus alectorolophus* as a function of osmotic potential. Plants were grown under high (W+) and low irrigation treatments (W-). Points correspond to individual plants, $n = 11$ and $n = 10$ for W+ and W-. Each plant was measured twice: when drought-stressed and water-saturated. Linear regression lines are presented by solid and dashed lines ($df = 5$; $LR = 42.15$, $P < 0.0001$ (A); $df = 4$, $LR = 31.00$, $P < 0.0001$ (B)). Grey vertical line relates to average osmotic potential at turgor loss point ($\Psi_{\pi \text{ TL} \text{ Pcor}} = -1.66$ MPa; Figures A and B in S1 Fig; Table 1) determined by pressure-chamber measurements.

<https://doi.org/10.1371/journal.pone.0200927.g003>

Rhinanthus seedlings to drought. The seedling survival of first two weeks after their transplant was strongly lowered by drought stress as we hypothesized, in contrast to two-days-older wheat hosts. Our observations also suggest that seedlings might be drought-sensitive both before and shortly after attachment to the host if we assume B-pots already host-connected. Drought stress is likely the mechanism behind field observations documented pronounced mortality of seedlings during spring droughts causing frequent population fluctuations [23,38,39]. Frequency and intensity of such fluctuations may increase in future as a result of climate change, which may eventually cause *Rhinanthus* extinction in some areas.

Table 2. Physiological traits (means ± SE) of hemiparasitic *Rhinanthus alectorolophus* grown under two contrasting irrigation treatments, high (W+) and low (W-).

Irrigation treatment	Plant water status	Gas-exchange and osmotic potential			Pressure-chamber parameters			
		Photosynthesis (μmol CO ₂ m ⁻² s ⁻¹)	Transpiration (mmol H ₂ O m ⁻² s ⁻¹)	Ψ _{π gas-exchange} (MPa)	Ψ _{π FT} (MPa)	Ψ _{π TLP_{cor}} (MPa)	RWC _{TLP_{cor}} (%)	ε
W+	Drought-stressed	6.8 ± 0.9	1.88 ± 0.36	-1.98 ± 0.08	-1.39 ± 0.03	-1.66 ± 0.03	88.9 ± 0.7	12.5 ± 1.1
	Water-saturated	9.1 ± 0.4	2.91 ± 0.27	-1.42 ± 0.06				
W-	Drought-stressed	8.6 ± 1.1	1.05 ± 0.19	-2.08 ± 0.15	-1.37 ± 0.04	-1.66 ± 0.03	87.4 ± 1.0	11.6 ± 1.4
	Water-saturated	12.9 ± 0.9	3.38 ± 0.22	-1.44 ± 0.08				

Gas exchange was measured at the irradiance of 500 μmol m⁻² s⁻¹ in plants under water stress (drought-stressed) and in the same, but fully water-saturated plants (water-saturated). Leaves subjected to gas-exchange were immediately sampled for actual osmotic potential (Ψ_{π gas-exchange}). Pressure-chamber parameters were calculated from pressure-chamber measurements initiated on fully water-saturated plants. We used a corrected turgor loss point equalling to 10% of full turgor (Ψ_{π TLP_{cor}}), as the RWC decrease in p-v curves (Figure B in S1 Fig) was hyperbolic and the turgor loss point was hard to determine. Ψ_{π FT} = osmotic potential at full turgor (RWC = 100%), Ψ_{π TLP_{cor}} = osmotic potential at corrected turgor loss point, RWC_{TLP_{cor}} = relative water content at corrected turgor loss point, ε = modulus of elasticity. n = 13 and 12 for gas-exchange and osmotic potential measurements of W+ and W- plants; n = 10 and 9 for pressure-chamber measurements of W+ and W- plants.

<https://doi.org/10.1371/journal.pone.0200927.t002>

Similarly to *Rhinanthus* seedlings, water stress negatively affected adult hemiparasites in terms of biomass production and physiological functioning. Water shortage inhibited the hemiparasite’s gas exchange, but drought-stressed and even wilted plants from both treatments still photosynthesized and transpired considerably (Table 2; Fig 3). A negative effect of drought on photosynthetic performance is well recognized for parasitic [40,41] and many non-parasitic plants [42–44] and mostly attributed to reduced stomatal and mesophyll conductance, and to a lesser extent to biochemical limitations [42,45,46]. We could not evaluate the importance of these, as we measured only transpiration rate consisting of stomatal conductance and evaporation of guttation water from hydathode trichomes, which cannot be separated from each other. Interestingly, the ability of wilted hemiparasites to carry out photosynthesis of substantial rate indicates that their guard cells were still turgid and stomata open.

The absence of significant differences in the water-relation parameters between the irrigation treatments (Table 2) indicated that low-irrigated plants did not osmotically adjust to long-term water stress which contrasts with our original hypothesis. We expected these plants to lower their osmotic and water potential as frequently observed in non-parasitic plants responding to drought stress [47–49]. The absence of any osmotic adjustment may refer to limited capacity of *Rhinanthus* to acclimatize to water stress or more probably its capability to tolerate drought without a need to adjust. The latter is supported by the fact that *Rhinanthus* of either treatment had rather low osmotic potential at full turgor (Ψ_{π FT} = -1.38 MPa in average; Table 2). Compared to non-parasitic species of similarly dry habitats, e.g. semiarid grassland dicots [50], this value may be low enough to ensure good physiological adjustment to water stress.

The photosynthetic rate of the flowering hemiparasites was affected by the irrigation treatment despite the absence of corresponding osmotic adjustment. The photosynthetic rate in low-irrigated plants (Table 2; Fig 3) was elevated compared with W+ plants of the same osmotic potential and these plants could therefore obtain more autotrophic carbon. This result is unexpected and can be related to a differential acclimation of water-stressed plants to repeated cycles of water stress sometimes referred to as stress memory [51,52]. Studies comparing plants acclimated and not-acclimated to drought stress are rare. Recently, Menezes-Silva et al. [53] reported elevated photosynthesis in coffee plants that underwent multiple drought events and attributed it to biochemical adjustments (e.g. increased activity of

Rubisco). Similar evidence had earlier been suggested to be associated with the maintenance of higher electron transport rates in plants acclimated to drought stress [49]. Increased photosynthetic rate may also be related to increased chlorophyll [54] and/or Rubisco concentrations in the hemiparasite underpinned by enhanced resource uptake from host root system under drought conditions [6]. This may be caused by delayed stomatal closure in the hemiparasites grown under W− relative to W+ hemiparasites of the same water status and relative to the host when the hemiparasite acts as a strong sink. Alternatively, allocating more assimilates into roots, the host might facilitate its resource uptake by providing more space for the establishment of haustorial connections and thus enables the hemiparasite to acquire nutrients essential for building up chlorophyll and/or Rubisco molecules.

Lower enrichment of the hemiparasite biomass in ^{13}C and ^{18}O compared with that of the host corresponds to the water-wasting physiological strategy of rhinanthoid root hemiparasites associated with higher transpiration and lower water-use efficiency (WUE). A similar pattern was reported in a field study from arid areas of Western Australia by Cernusak et al. [55], but the isotope proportions seem to highly depend on particular growing conditions. This might be a reason why non-significant differences in ^{13}C were found between *R. alectorolophus*/*Euphrasia rostkoviana* and wheat [5]. The lack of differences in ^{13}C in root-hemiparasite– C_3 host pair was also reported for *Striga-gesnerioides*–*Vigna-unguiculata* [56] and *Oxalis-phylanthi*–multiple-hosts [57]. Similar enrichment in *Oxalis* and their hosts was explained by their similar WUE [57]. The evaluation of $\delta^{13}\text{C}$ results is further complicated by heterotrophic C uptake by *Rhinanthus*, which might underestimate the differences in WUE between species as suggested by Cernusak et al. [55].

Although the physiological functioning of hemiparasitic and host plants differ in many aspects, both species seem to respond to water stress conditions in a similar way, contrasting to what was previously suggested [6,13]. Hemiparasites and hosts close stomata under severe water stress, increasing their WUE and restricting transpiration and stomatal conductance, which is inferred from higher enrichment of both species biomass in ^{13}C and ^{18}O under W− (Fig 4). While stomatal closure is ABA-mediated in the host, it is likely that stomata of the hemiparasite close passively after turgor of guard cells is lost. Interestingly, gas exchange of wilted hemiparasites recorded here (Fig 3) demonstrate that the passive stomatal closure is preceded by leaf turgor loss in *R. alectorolophus*. Passive stomatal closure was reported to prevail active ABA-mediated stomatal closure in ferns and lycophytes [58], and also in woody angiosperms [59,60], but these two processes might operate in the same species together [61]. This is unlikely to happen in *Rhinanthus* since their stomata actively close only in response to extremely high concentration of ABA [12]. Despite the absence of ABA-mediated stomatal regulation in attached *Rhinanthus*, these plants are known to contain unusually high ABA concentration [24]. ABA may thus contribute to the acclimation of the hemiparasites to drought stress via the formation of dehydrins or other drought-protective proteins as suggested by Jiang et al. [14], but its exact mechanism remains unknown.

In summary, we demonstrated that the adult hemiparasites have certain capacity to withstand drought stress. Their physiological traits, in particular generally low osmotic potential associated with the ability to recover from the wilting, are likely crucial for their growth in moderately dry habitats [22,62]. However, most root-hemiparasitic species of temperate grasslands (including those of the genus *Rhinanthus*) display rather prominent limit of their ecological niche at the dry-end of the water availability gradient. The lack of further physiological adjustment to more severe drought demonstrated here may thus cause a substantial decline of the hemiparasitic species under the projected (and recently also observed) climate change-induced increase of temperature and drought events [63]. Nevertheless, more studies on water-relations of root hemiparasites under repeated drought stress are needed to accurately estimate the stability of their populations in future warmer climate.

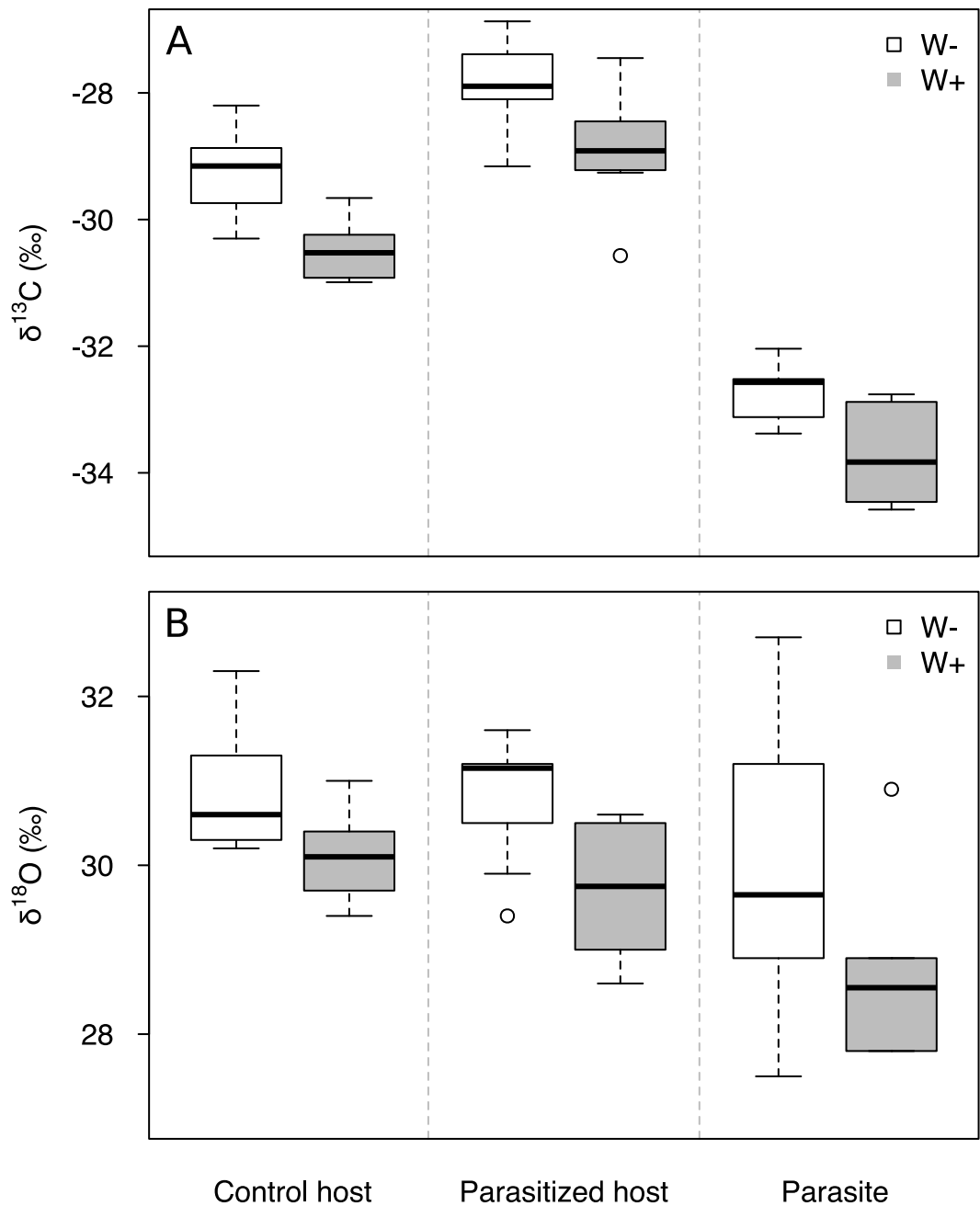


Fig 4. Carbon (A) and oxygen (B) stable-isotopic composition of above-ground biomass of control and parasitized *Triticum aestivum* host and the hemiparasitic *Rhinanthus alectorolophus* grown under high (W+) and low (W-) irrigation treatments. n = 10 for both control and parasitized pots and each water treatment.

<https://doi.org/10.1371/journal.pone.0200927.g004>

Supporting information

S1 Fig. Höfler plot (A) and pressure–volume curve (p–v curve, B) revealing water relation parameters of flowering *Rhinanthus alectorolophus*. The turgor loss point, which is usually defined as the first point of linearly decreasing segment of a p–v curve (light grey), was hard to determine due to hyperbolic shape of the p–v curve. To reduce the error of the determination,

we replaced it by a corrected turgor loss point (dark grey) corresponding to 10% of full turgor (Ψ_p). Additionally, the intercept of the linear segment of the p-v curve with the x-axis was fixed to 23.1% of total RWC (RWC_{AW}) estimated to represent the volume of apoplastic water inside measured plant (B). This enabled us to define the linear segment, i.e. osmotic potential and hence other parameters more precisely. Ψ = water potential, Ψ_p = turgor or pressure potential, Ψ_π = osmotic potential, $\Psi_{\pi FT}$ = osmotic potential at full turgor (black triangle), $\Psi_{\pi TLP}$ = osmotic potential at turgor loss point, RWC = relative water content, RWC_{AW} = fraction of apoplastic water fixed at 23.1% of total RWC, RWC_{TLP} = RWC at turgor loss point, RWC_{TLPcor} = RWC at corrected turgor loss point, ϵ = the modulus of elasticity.

(PDF)

S2 Fig. The recovery of wilted *Rhinanthus alectorolophus* (A and C) from severe drought stress several hours after re-watering (B and D). One non-flowering and one flowering individuals are shown. Note the effect of drought stress on wheat, which was used as a host species.

(PDF)

S3 Fig. Stomatal density on leaves (A) and bracts (B) of hemiparasitic *Rhinanthus alectorolophus* grown under high (W+) and low irrigation treatments (W-). Both adaxial and abaxial sides are presented. n = 9 for W+ leaves, n = 5 for W-leaves, n = 9 for W+ bracts, and n = 7 for W-bracts.

(PDF)

S1 Table. ANOVA table of linear models describing the effects of irrigation treatment, infection by the parasitic *Rhinanthus alectorolophus*, harvest day, and their interactions on the host (*Triticum aestivum*) above-ground biomass and its stable-isotopic composition. Factor Infected represents the effect of parasitic infection on host parameters. $\delta^{13}C$ and $\delta^{18}O$ represent the isotopic composition of host overall biomass. The effects not tested for a particular variable are indicated by light grey. Significant terms ($P < 0.05$) are in bold. df: degrees of freedom; SS: sum of squares; F: F-statistics; p: significance level.

(PDF)

S2 Table. ANOVA table of linear models describing the effect of irrigation treatment on the above-ground biomass and its stable-isotopic composition of parasitic *Rhinanthus alectorolophus*. $\delta^{13}C$ and $\delta^{18}O$ represent the isotopic composition of the parasite biomass. Significant terms ($P < 0.05$) are in bold. df: degrees of freedom; SS: sum of squares; F: F statistics; p: significance level.

(PDF)

S3 Table. ANOVA table of linear models describing the effects of irrigation treatment, osmotic potential of leaves subjected to gas exchange measurements, and their interaction on photosynthetic and transpiration rate of parasitic *Rhinanthus alectorolophus*. Significant terms ($P < 0.05$) are in bold. df: degrees of freedom; F: F statistics; p: significance level.

(PDF)

S4 Table. ANOVA table of linear models describing the effects of irrigation treatment, leaf water saturation, and their interaction on photosynthetic and transpiration rate of parasitic *Rhinanthus alectorolophus*. Factor Saturated represents the effect of leaf saturation by water on the hemiparasite parameters. Significant terms ($P < 0.05$) are in bold. df: degrees of freedom; F: F statistics; p: significance level.

(PDF)

S5 Table. ANOVA table of linear models describing the effects of irrigation treatment, plant species, and their interaction on the stable-isotopic composition ($\delta^{13}\text{C}$ and $\delta^{18}\text{O}$) of host (*Triticum aestivum*) and parasite (*Rhinanthus alectorolophus*) above-ground biomass. Factor Plant represents the effect of plant species on isotopic parameters. $\delta^{13}\text{C}$ and $\delta^{18}\text{O}$ represent the isotopic composition of plant biomass. Significant terms ($P < 0.05$) are in bold. df: degrees of freedom; F: F statistics; p: significance level.
(PDF)

S6 Table. ANOVA table of linear models describing the effects of irrigation treatment and sampling place (leaf/bract) on the density of stomata on abaxial and adaxial leaf and bract sides of parasitic *Rhinanthus alectorolophus*. Factor Leaf/bract represents the effect of sampling place on stomatal density. Significant terms ($P < 0.05$) are in bold. df: degrees of freedom; F: F statistics; p: significance level.
(PDF)

S1 File. Seedling survival data and all data collected from adult plants, except for pressure-chamber data. D and W refer to parasitized low and high irrigation pots. HD and HW refer to non-parasitized low and high irrigation pots. Additional abbreviations used are explained in individual data sheets (in green).
(XLS)

S2 File. Pressure-chamber data. Each plant measurement is displayed on a separate sheet. D and W refer to parasitized low and high irrigation pots. D21 measurement was used for Figures A and B in [S1 Fig](#).
(XLSX)

Acknowledgments

We thank Maria Májeková for the cooperation on adjustment of water-relation methods and valuable comments on our results and Ágnes Albert for her help with plant watering.

Author Contributions

Conceptualization: Petra Světlíková, Tomáš Hájek, Jakub Těšitel.

Formal analysis: Petra Světlíková, Tomáš Hájek, Jakub Těšitel.

Investigation: Petra Světlíková.

Methodology: Petra Světlíková, Tomáš Hájek, Jakub Těšitel.

Writing – original draft: Petra Světlíková, Tomáš Hájek, Jakub Těšitel.

References

1. Lambers H, Chapin F III, Pons T, editors. Plant Physiological Ecology. 2nd ed. New York: Springer-Verlag; 2008. <https://doi.org/10.1016/j.aos.2008.04.001>
2. Sun WQ. Methods for the study of water relations under desiccation stress. In: Black M, Pritchard HW, editors. Desiccation and survival in plants: Drying without dying. Wallingford: CABI Publishing; 2002. pp. 47–91. <https://doi.org/10.1079/9780851995342.0000>
3. Westwood JH. The physiology of the established parasite–host association. In: Joel D, Gressel J, Muselman LJ, editors. Parasitic Orobanchaceae: Parasitic mechanisms and control strategies. Berlin: Springer-Verlag; 2013. pp. 87–114. <https://doi.org/10.1007/978-3-642-38146-1>

4. Cameron DD, Seel WE. Functional anatomy of haustoria formed by *Rhinanthus minor*: linking evidence from histology and isotope tracing. *New Phytol.* 2007; 174: 412–419. <https://doi.org/10.1111/j.1469-8137.2007.02013.x> PMID: 17388903
5. Těšitel J, Plavcová L, Cameron DD. Heterotrophic carbon gain by the root hemiparasites, *Rhinanthus minor* and *Euphrasia rostkoviana* (Orobanchaceae). *Planta.* 2010; 231: 1137–1144. <https://doi.org/10.1007/s00425-010-1114-0> PMID: 20179964
6. Těšitel J, Těšitelová T, Fisher JP, Lepš J, Cameron DD. Integrating ecology and physiology of root-hemiparasitic interaction: interactive effects of abiotic resources shape the interplay between parasitism and autotrophy. *New Phytol.* 2014; 205: 350–360. <https://doi.org/10.1111/nph.13006> PMID: 25197020
7. Selosse M-A, Charpin M, Not F. Mixotrophy everywhere on land and in water: the grand écart hypothesis. *Ecol Lett.* 2017; 20: 246–263. <https://doi.org/10.1111/ele.12714> PMID: 28032461
8. Dörr I. How *Striga* parasitizes its host: a TEM and SEM study. *Ann Bot.* 1997; 79: 463–472. <https://doi.org/10.1006/anbo.1996.0385>
9. Rümer S, Cameron DD, Wacker R, Hartung W, Jiang F. An anatomical study of the haustoria of *Rhinanthus minor* attached to roots of different hosts. *Flora.* 2007; 202: 194–200. <https://doi.org/10.1016/j.flora.2006.07.002>
10. Press MC, Graves JD, Stewart GR. Transpiration and carbon acquisition in root hemiparasitic angiosperms. *J Exp Bot.* 1988; 39: 1009–1014. <https://doi.org/10.1093/jxb/39.8.1009>
11. Stewart GR, Press MCM. The physiology and biochemistry of parasitic angiosperms. *Annu Rev Plant Physiol Mol Biol.* 1990; 41: 127–151. <https://doi.org/10.1146/annurev.pp.41.060190.001015>
12. Jiang F, Jeschke WD, Hartung W. Water flows in the parasitic association *Rhinanthus minor*/*Hordeum vulgare*. *J Exp Bot.* 2003; 54: 1985–1993. <https://doi.org/10.1093/jxb/erg212> PMID: 12869524
13. Ehleringer JR, Marshall JD. Water relations. In: Press MC, Graves JD, editors. *Parasitic plants*. London: Chapman & Hall; 1995. pp. 125–140.
14. Jiang F, Jeschke WD, Hartung W. Contents and flows of assimilates (mannitol and sucrose) in the hemiparasitic *Rhinanthus minor*/*Hordeum vulgare* association. *Folia Geobot.* 2005; 40: 195–203. <https://doi.org/10.1007/BF02803234>
15. Smith S, Stewart GR. Effect of potassium levels on the stomatal behavior of the hemi-parasite *Striga hermonthica*. *Plant Physiol.* 1990; 94: 1472–1476. <https://doi.org/10.1104/pp.94.3.1472> PMID: 16667856
16. Govier RN, Brown JGS, Pate JS. Hemiparasitic nutrition in angiosperms. II. Root haustoria and leaf glands of *Odontites verna* (Bell.) Dum. and their relevance to the abstraction of solutes from the host. *New Phytol.* 1968; 67: 963–972. <https://doi.org/10.1111/j.1469-8137.1968.tb06407.x>
17. Těšitel J, Tesařová M. Ultrastructure of hydathode trichomes of hemiparasitic *Rhinanthus alectorolophus* and *Odontites vernus*: how important is their role in physiology and evolution of parasitism in Orobanchaceae? *Plant Biol.* 2013; 15: 119–125. <https://doi.org/10.1111/j.1438-8677.2012.00610.x> PMID: 22676139
18. Světlíková P, Hájek T, Těšitel J. Hydathode trichomes actively secreting water from leaves play a key role in the physiology and evolution of root-parasitic rhinanthoid Orobanchaceae. *Ann Bot.* 2015; 116: 61–68. <https://doi.org/10.1093/aob/mcv065> PMID: 25987711
19. Meusel H, Jäger E, Rauschert S, Weinert E. *Vergleichende Chorologie der zentraleuropäischen Flora*. Jena: Gustav Fischer Verlag; 1978.
20. Hejrcman M, Schellberg J, Pavlů V. Competitive ability of *Rhinanthus minor* L. in relation to productivity in the Rengen grassland experiment. *Plant, Soil Environ.* 2011; 57: 45–51.
21. Těšitel J, Mládek J, Horník J, Těšitelová T, Adamec V, Tichý L. Suppressing competitive dominants and community restoration with native parasitic plants using the hemiparasitic *Rhinanthus alectorolophus* and the dominant grass *Calamagrostis epigejos*. *J Appl Ecol.* 2017; 54: 1487–1495. <https://doi.org/10.1111/1365-2664.12889>
22. Těšitel J, Fibich P, de Bello F, Chytrý M, Lepš J. Habitats and ecological niches of root-hemiparasitic plants: an assessment based on a large database of vegetation plots. *Preslia.* 2015; 87: 87–108.
23. Ducarme V, Wesselingh R. Performance of two *Rhinanthus* species under different hydric conditions. *Plant Ecol.* 2009; 206: 263–277. <https://doi.org/10.1007/s11258-009-9640-1>
24. Jiang F, Jeschke WD, Hartung W. Abscisic acid (ABA) flows from *Hordeum vulgare* to the hemiparasite *Rhinanthus minor* and the influence of infection on host and parasite abscisic acid relations. *J Exp Bot.* 2004; 55: 2323–2329. <https://doi.org/10.1093/jxb/erh240> PMID: 15310813
25. Těšitel J, Říha P, Svobodová Š, Malinová T, Štech M. Phylogeny, life history evolution and biogeography of the Rhinanthoid Orobanchaceae. *Folia Geobot.* 2010; 45: 347–367. <https://doi.org/10.1007/s12224-010-9089-y>

26. McNeal JR, Bennett JR, Wolfe AD, Mathews S. Phylogeny and origins of holoparasitism in Orobanchaceae. *Am J Bot.* 2013; 100: 971–983. <https://doi.org/10.3732/ajb.1200448> PMID: 23608647
27. Zopfi H. Ecotypic variation in *Rhinanthus alectorolophus* (Scopoli) Pollich (Scrophulariaceae) in relation to grassland management. II: The genotypic basis of seasonal ecotypes. *Flora.* Elsevier Masson SAS; 1993; 188: 153–173. [https://doi.org/10.1016/S0367-2530\(17\)32261-2](https://doi.org/10.1016/S0367-2530(17)32261-2)
28. Skála Z, Štech M. *Rhinanthus L.* In: Slavík B, editor. *Květena České Republiky [Flora of the Czech Republic]* 6. Praha: Academia; 2000. pp. 462–471.
29. Blažek P, Lepš J. Victims of agricultural intensification: MOWING date affects *Rhinanthus* spp. regeneration and fruit ripening. *Agric Ecosyst Environ.* 2015; 211: 10–16. <https://doi.org/10.1016/j.agee.2015.04.022>
30. Klaren CH, Janssen G. Physiological changes in the hemiparasite *Rhinanthus serotinus* before and after attachment. *Physiol Plant.* 1978; 42: 151–155. <https://doi.org/10.1111/j.1399-3054.1978.tb01556.x>
31. Chaves MM, Maroco JP, Pereira JS. Understanding plant responses to drought—from genes to the whole plant. *Funct Plant Biol.* 2003; 30: 239–264. <https://doi.org/10.1071/FP02076>
32. Turner NC. Techniques and experimental approaches for the measurement of plant water status. *Plant Soil.* 1981; 58: 339–366. <https://doi.org/10.1007/BF02180062>
33. Koide RT, Robichaux RH, Morse SR, S C.M. Plant water status, hydraulic resistance and capacitance. In: Pearcy RW, Ehleringer J, Mooney HA, Rundel PW, editors. *Plant physiological ecology: Field methods and instrumentation.* London: Chapman & Hall; 1989. pp. 161–183. [https://doi.org/10.1016/0169-5347\(90\)90241-5](https://doi.org/10.1016/0169-5347(90)90241-5)
34. Tyree MT, Hammel HT. The measurement of the turgor pressure and the water relations of plants by the pressure-bomb technique. *J Exp Bot.* 1972; 23: 267–282. <https://doi.org/10.1093/jxb/23.1.267>
35. Crawley M. *The R Book.* Chichester: John Wiley and Sons; 2007. <https://doi.org/10.1198/016214502760047131>
36. Harrington DP, Fleming TR. A class of rank test procedures for censored survival data. *Biometrika.* 1982; 69: 553–566. <https://doi.org/10.1093/biomet/69.3.553>
37. R Core Team. *R: a language and environment for statistical computing [Internet].* Vienna, Austria: R Foundation for Statistical Computing; 2013. Available: <http://www.r-project.org/>
38. Van Hulst R, Shipley B, Theriault A. Why is *Rhinanthus minor* (Scrophulariaceae) such a good invader? *Can J Bot.* 1987; 65: 2373–2379. <https://doi.org/10.1139/b87-322>
39. Ameloot E, Verheyen K, Bakker JP, Vries Y De, Hermy M. Long-term dynamics of the hemiparasite *Rhinanthus angustifolius* and its relationship with vegetation structure. *J Veg Sci.* 2006; 17: 637–646. <https://doi.org/10.1111/j.1654-1103.2006.tb02487.x>
40. Inoue T, Yamauchi Y, Eltayeb AH, Samejima H, Babiker AGT, Sugimoto Y. Gas exchange of root hemiparasite *Striga hermonthica* and its host *Sorghum bicolor* under short-term soil water stress. *Biol Plant.* 2013; 57: 773–777. <https://doi.org/10.1007/s10535-013-0348-7>
41. Ullmann I, Lange OL, Ziegler H, Ehleringer J, Schulze ED, Cowan IR. Diurnal courses of leaf conductance and transpiration of mistletoes and their hosts in Central Australia. *Oecologia.* 1985; 67: 577–587. <https://doi.org/10.1007/BF00790030> PMID: 28311044
42. Flexas J, Bota J, Galmes J, Medrano H, Ribas-Carbo M. Keeping a positive carbon balance under adverse conditions: responses of photosynthesis and respiration to water stress. *Physiol Plant.* 2006; 127: 343–352. <https://doi.org/10.1111/j.1399-3054.2005.00621.x>
43. Grassi G, Magnani F. Stomatal, mesophyll conductance and biochemical limitations to photosynthesis as affected by drought and leaf ontogeny in ash and oak trees. *Plant, Cell Environ.* 2005; 28: 834–849. <https://doi.org/10.1111/j.1365-3040.2005.01333.x>
44. Yan W, Zhong Y, Shangguan Z. A meta-analysis of leaf gas exchange and water status responses to drought. *Sci Rep.* 2016; 6: 20917. <https://doi.org/10.1038/srep20917> PMID: 26868055
45. Flexas J, Medrano H. Drought-inhibition of photosynthesis in C₃ plants: Stomatal and non-stomatal limitations revisited. *Ann Bot.* 2002; 89: 183–189. <https://doi.org/10.1093/aob/mcf027> PMID: 12099349
46. Kubiske ME, Abrams MD. Ecophysiological analysis of woody species in contrasting temperate communities during wet and dry years. *Oecologia.* 1994; 98: 303–312. <https://doi.org/10.1007/BF00324218> PMID: 28313906
47. Goldstein G, Rada F, Sternberg L, Burguera J, Burguera M, Orozco A, et al. Gas exchange and water balance of a mistletoe species and its mangrove hosts. *Oecologia.* 1989; 78: 176–183. <https://doi.org/10.1007/BF00377153> PMID: 28312356
48. Lenz TI, Wright IJ, Westoby M. Interrelations among pressure-volume curve traits across species and water availability gradients. *Physiol Plant.* 2006; 127: 423–433. <https://doi.org/10.1111/j.1399-3054.2006.00680.x>

49. Maury P, Mojayad F, Berger M, Planchon C. Photochemical response to drought acclimation in two sunflower genotypes. *Physiol Plant*. 1996; 98: 57–66. <https://doi.org/10.1111/j.1399-3054.1996.tb00675.x>
50. Krasser D, Kalapos T. Leaf water relations for 23 angiosperm species from steppe grasslands in Hungary. *Community Ecol*. 2000; 1: 123–131. <https://doi.org/10.1556/ComEc.1.2000.2.1>
51. Fleta-Soriano E, Munné-Bosch S. Stress memory and the inevitable effects of drought: a physiological perspective. *Front Plant Sci*. 2016; 7: 1–6. <https://doi.org/10.3389/fpls.2016.00001>
52. Bruce TJA, Matthes MC, Napier JA, Pickett JA. Stressful “memories” of plants: evidence and possible mechanisms. *Plant Sci*. 2007; 173: 603–608. <https://doi.org/10.1016/j.plantsci.2007.09.002>
53. Menezes-Silva PE, Sanglard LMP V., Ávila RT, Morais LE, Martins SC V., Nobres P, et al. Photosynthetic and metabolic acclimation to repeated drought events play key roles in drought tolerance in coffee. *J Exp Bot*. 2017; 68: 4309–4322. <https://doi.org/10.1093/jxb/erx211> PMID: 28922767
54. Seel WE, Cooper RE, Press MC. Growth, gas exchange and water use efficiency of the facultative hemiparasite *Rhinanthus minor* associated with hosts differing in foliar nitrogen concentration. *Physiol Plant*. 1993; 89: 64–70. <https://doi.org/10.1111/j.1399-3054.1993.tb01787.x>
55. Cernusak LA, Pate JS, Farquhar GD. Oxygen and carbon isotope composition of parasitic plants and their hosts in southwestern Australia. *Oecologia*. 2004; 139: 199–213. <https://doi.org/10.1007/s00442-004-1506-6> PMID: 14991394
56. Press MC, Shah N, Tuohy JM, Stewart GR. Carbon isotope ratios demonstrate carbon flux from C₄ host to C₃ parasite. *Plant Physiol*. 1987; 85: 1143–1145. <https://doi.org/10.1104/pp.85.4.1143> PMID: 16665818
57. Pate JS, Davidson NJ, Kuo J, Milburn JA. Water relations of the root hemiparasite *Oxalophyllanthi* (Labill) R.Br. (Olacaceae) and its multiple hosts. *Oecologia*. 1990; 84: 186–193. <https://doi.org/10.1007/BF00318270> PMID: 28312751
58. McAdam SAM, Brodribb TJ. Ancestral stomatal control results in a canalization of fern and lycophyte adaptation to drought. *New Phytol*. 2013; 198: 429–441. <https://doi.org/10.1111/nph.12190> PMID: 23421706
59. Tombesi S, Nardini A, Frioni T, Soccolini M, Zadra C, Farinelli D, et al. Stomatal closure is induced by hydraulic signals and maintained by ABA in drought-stressed grapevine. *Sci Rep*. 2015; 5: 12449. <https://doi.org/10.1038/srep12449> PMID: 26207993
60. Rodríguez-Dominguez CM, Buckley TN, Egea G, de Cires A, Hernandez-Santana V, Martorell S, et al. Most stomatal closure in woody species under moderate drought can be explained by stomatal responses to leaf turgor. *Plant Cell Environ*. 2016; 39: 2014–2026. <https://doi.org/10.1111/pce.12774> PMID: 27255698
61. McAdam SAM, Brodribb TJ. Separating active and passive influences on stomatal control of transpiration. *Plant Physiol*. 2014; 164: 1578–1586. <https://doi.org/10.1104/pp.113.231944> PMID: 24488969
62. Phoenix GK, Press MC. Effects of climate change on parasitic plants: the root hemiparasitic *Orobanchaceae*. *Folia Geobot*. 2005; 40: 205–216. <https://doi.org/10.1007/BF02803235>
63. Meehl GA, Stocker TF, Collins WD, Friedlingstein P, Gaye AT, Gregory JM, et al. Global Climate Projections. In: Solomon S, Qin D, Manning M, Chen Z, Marquis M, Averyt K, et al., editors. *Climate Change 2007: The Physical Science Basis Contribution of Working Group I to the Fourth Assessment Report of the Intergovernmental Panel on Climate Change*. Cambridge, United Kingdom and New York, NY, USA: Cambridge University Press; 2007. pp. 747–846. <https://doi.org/10.1080/07341510601092191>