

# An exceptional P-H phosphonite: Biphenyl-2,2'-bisfenchylchlorophosphite and derived ligands (BIFOPs) in enantioselective copper-catalyzed 1,4-additions

T Kop-Weiershausen, J Lex, J-M Neudörfl and B Goldfuss\*

Address: Institut für Organische Chemie, Universität zu Köln, Greinstrasse 4, 50939 Köln, Germany

Email: T Kop-Weiershausen - t.kop-weiershausen@uni-koeln.de; J Lex - johann.lex@uni-koeln.de; J-M Neudörfl - aco48@uni-koeln.de; B Goldfuss\* - Goldfuss@Uni-Koeln.de

\* Corresponding author

Published: 26 August 2005

Received: 29 June 2005

Beilstein Journal of Organic Chemistry 2005, 1:6 doi:10.1186/1860-5397-1-6

Accepted: 26 August 2005

This article is available from: <http://bjoc.beilstein-journals.org/content/1/1/6>

© 2005 Kop-Weiershausen et al; licensee Beilstein-Institut.

This is an Open Access article distributed under the terms of the Creative Commons Attribution License (<http://creativecommons.org/licenses/by/2.0>), which permits unrestricted use, distribution, and reproduction in any medium, provided the original work is properly cited.

## Abstract

Biphenyl-2,2'-bisfenchol (BIFOL) based chlorophosphite, BIFOP-Cl, exhibits surprisingly high stabilities against hydrolysis as well as hydridic and organometallic nucleophiles. Chloride substitution in BIFOP-Cl proceeds only under drastic conditions. New enantiopure, sterically demanding phosphorus ligands such as a phosphoramidite, a phosphite and a P-H phosphonite (BIFOP-H) are hereby accessible. In enantioselective Cu-catalyzed 1,4-additions of  $\text{ZnEt}_2$  to 2-cyclohexen-1-one, this P-H phosphonite (yielding 65% ee) exceeds even the corresponding phosphite and phosphoramidite.

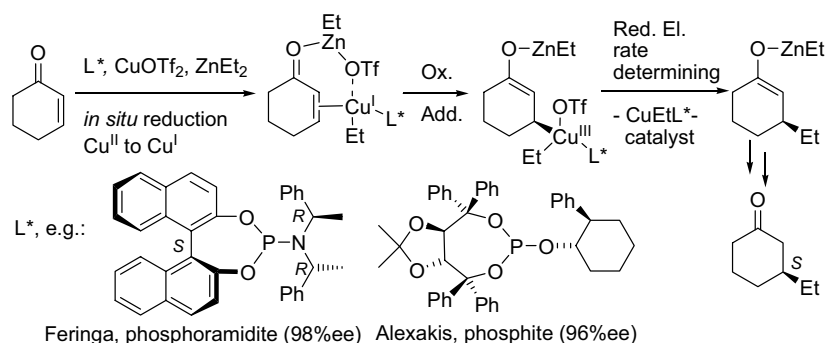
## Introduction

Chiral monodentate phosphorus ligands with  $C_2$ -symmetric diol backbones, e.g. with the prominent BINOLs or TADDOLs, are fundamental for the construction of efficient enantioselective transition metal catalysts, especially for copper-catalyzed 1,4-additions. [1-18] Such asymmetric conjugate additions of diethylzinc to enones are often highly enantioselective, especially with phosphoramidites (amidophosphites) and phosphites. [19-42] These chiral ligands ( $L^*$ ) exhibit large steric demands and good metal to ligand back bonding abilities. Such ligands generate active  $R\text{-Cu}^I\text{-L}^*$  catalysts and support the rate determining reductive elimination in the catalytic cycle (Scheme 1). [43-48]

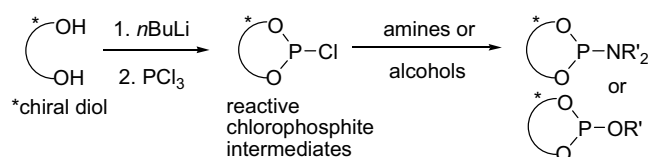
Common basis for diol-based phosphoramidites and phosphites are highly reactive chlorophosphites. [49-52]

These intermediates are converted usually *in situ* with amines or alcohols to the modular, enantiopure ligands (Scheme 2). [19-42].

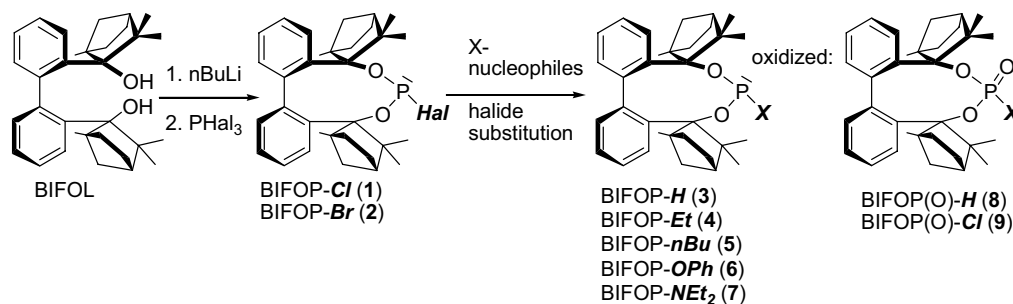
Modular fencholates were recently applied in chiral organolithium reagents [53-59] and in organozinc [60-63] as well as in organopalladium catalysts [64-68] to study origins of enantioselectivities in C-C-couplings. The rigid, terpene-based bicyclo[2.2.1]heptane unit enables efficient, stereoselective access to crystalline diol ligands such as BIFOL (*biphenyl-bisfenchol*), [69-73] which we here apply for constructions of new BIFOL-based, phosphorus ligands, i.e. *biphenylbisfencholphosphanes* (BIFOPs). BIFOPs with high steric demand and good acceptor abilities are then employed in enantioselective Cu-catalyzed 1,4-additions.



**Scheme 1: Monodentate phosphorus ligands, e.g. BINOL-based phosphoramidites or TADDOL-based phosphites, are highly efficient in copper catalyzed enantioselective conjugate additions.**



**Scheme 2: Modular phosphoramidites (R= NR'2) or phosphites (R= OR') from reactive chlorophosphite intermediates.**

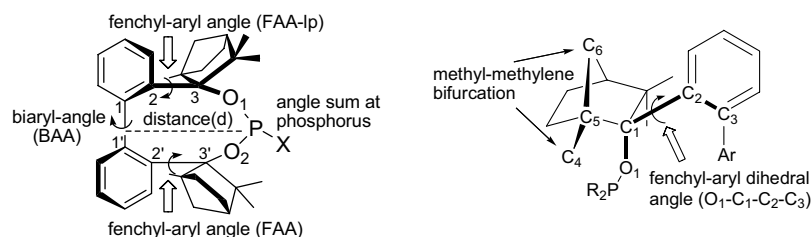


**Scheme 3: Synthesis of biphenyl-2,2'-bisfenchol (BIFOL) based phosphane derivatives (BIFOPs).**

## Results and Discussion

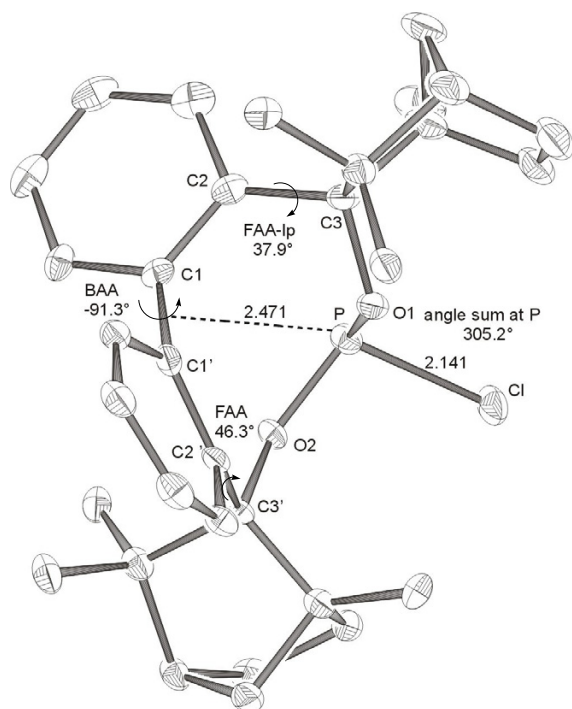
Coupling of bis-lithiated biphenyl-2,2'-bisfenchol (BIFOL), synthesized from 2,2'-dilithiobiphenyl and (-)-fenchone, [69-73] with  $\text{PCl}_3$  or  $\text{PBr}_3$  yields the enantiopure halophosphites BIFOP-Cl, **1** (62% yield) and BIFOP-Br, **2** (69% yield, Scheme 3), which are air stable (no hydrolysis or oxidation) over weeks, crystalline and analyzable via X-ray diffraction. [74-77] In close analogy to the hydrogen bonded *M*-BIFOL, [69-73] only *minus*-(*M*)-conformations of biaryl axes are found in these BIFOP (biphenylbisfencholphosphane) halides (Figures 1 and 2). Surprisingly, the halophosphites **1** (BIFOP-Cl) and **2** (BIFOP-Br) are very reluctant in reactions with various nucleophilic reagents to give halide substitution (Table 1). [78,79] No nucleophilic substitution [19-42] is observed for **1** in treatments with equimolar suspensions of  $\text{LiAlH}_4$  in hexanes or THF at 25 °C for 3 h (Table 1, entries 1 and 2). Only elevated temperatures (69 °C), longer reaction times (12 h) and an excess of  $\text{LiAlH}_4$  yields the P-H phosphonite BIFOP-H, **3** (79% yield, Table 1,

entry 3, Figure 3). Even the strong C-nucleophilic reagents methylolithium, ethyllithium, *n*-butyllithium and *t*-butyllithium gave no expected conversions at low temperatures. Ethylation of BIFOP-Cl (**1**) yielding BIFOP-Et (**4**) was observed with ethyllithium only at elevated temperatures (Table 1, entry 7) or with a large excess of diethylzinc at room temperature (Table 1, entry 13). Similarly, **1** was converted to BIFOP-*n*Bu (**5**, Figure 4) only with an excess of *n*-BuLi at elevated temperatures. The resistance of BIFOP-Cl (**1**) to O- and N-nucleophiles is apparent from reactions with  $\text{H}_2\text{O}$ , LiOPh and  $\text{LiNEt}_2$ . While no hydrolysis of **1** is observed at ambient temperature, only reflux and basic conditions (KOH) yield complete hydrolysis of **1** to BIFOP(O)-H, **8** (98%, Table 1, entry 14, Figure 5). [80,81] The phosphite BIFOP-OPh, **6** (40%, Figure 6) and the phosphoramidite BIFOP-NEt<sub>2</sub>, **7** (47%, Figure 7) are accessible from **1** only at elevated temperatures with LiOPh or  $\text{LiNEt}_2$ . The oxo-derivative BIFOP(O)-Cl (**9**) is synthesized by coupling of BIFOL with  $\text{POCl}_3$  (65%, Figure 8).



**Scheme 4: Geometries of BIFOP-systems with respect to biaryl dihedral angles ( $C_2-C_1-C_1'-C_2'$ , BAA), fenchyl-aryl dihedral angles ( $C_1-C_2-C_3-O_1$ ) on the lone pair-side of phosphorus (FAA-lp) and at the substituent (X) side (FAA), the pyramidity of phosphorus measured as angle sum and the distance of phosphorus to the biaryl axis ( $C_1-C_1'$ ).**

The high steric demand of the embedding fenchane units provides explanations for the unexpectedly low reactivity of the  $>P-Cl$  moiety in BIFOP-Cl (**1**). The geometries of all BIFOP-derivatives are remarkable with respect to their biaryl-angles, the fenchyl-aryl-angles, the pyramidity at the phosphorus atoms as well as the positions of the phosphorus atom in the hydrophobic fenchane cavities (Scheme 4, Table 2).



**Figure 1**  
**X-ray crystal structure of BIFOP-Cl (**1**).** Distances are given in Å. (BAA = biaryl angle between  $C_2-C_1-C_1'-C_2'$ ; FAA-lp = fenchyl-aryl dihedral angle between  $C_1-C_2-C_3-O_1$ ; FAA = fenchyl-aryl dihedral angle between  $C_1'-C_2'-C_3'-O_2$ ). The probability of ellipsoids is 40% (CDC 270531).

**Table 1: Reactivity of BIFOP-Cl (**1**) with various nucleophilic reagents.**

entry	Reagent	I : reagent	conditions	yield <sup>a</sup>
1	LiAlH <sub>4</sub>	1 : 1	Rt, 3 h, THF	.. <sup>b</sup>
2	LiAlH <sub>4</sub>	1 : 1	Rt, 3 h, hexanes	.. <sup>b</sup>
3	LiAlH <sub>4</sub>	1 : 2.5	reflux, 12 h, hexanes	<b>3</b> (79%)
4	MeLi	1 : 1.2 <sup>c</sup>	-78°C, hexanes, Et <sub>2</sub> O <sup>d</sup>	.. <sup>b</sup>
5	MeLi	1 : 5 <sup>c</sup>	reflux, 24 h hexanes, Et <sub>2</sub> O	.. <sup>b</sup>
6	EtLi	1 : 1.2 <sup>c</sup>	-78°C, hexanes, benzene <sup>d</sup>	.. <sup>b</sup>
7	EtLi	1 : 5 <sup>c</sup>	reflux, 24 h, hexanes, benzene	<b>4</b> (63%)
8	nBuLi	1 : 1.2	-78°C-rt, hexanes <sup>d</sup>	.. <sup>b</sup>
9	nBuLi	1 : 5	reflux, 24 h, hexanes	<b>5</b> (74%)
10	tBuLi	1 : 1.2	-78°C-rt, hexanes <sup>d</sup>	.. <sup>b</sup>
11	tBuLi	1 : 5	reflux, 48 h, hexanes	.. <sup>b</sup>
12	ZnEt <sub>2</sub>	1 : 2	rt, 2 h, toluene	.. <sup>b</sup>
13	ZnEt <sub>2</sub>	1 : 140	rt, 2 h, toluene	<b>4</b> (89%)
14	H <sub>2</sub> O	1 : 110	rt, 3 h	.. <sup>b</sup>
15	H <sub>2</sub> O/KOH	1 : 220 <sup>e</sup>	reflux, 5 days	<b>8</b> (98%)
16	LiOPh	1 : 5	-78°C-rt, hexanes <sup>d</sup>	.. <sup>b</sup>
17	LiOPh	1 : 5	reflux, 24 h, hexanes	<b>6</b> (47%)
18	LiNEt <sub>2</sub>	1 : 5	-78°C-rt, hexanes <sup>d</sup>	.. <sup>b</sup>
19	LiNEt <sub>2</sub>	1 : 5	reflux, 24 h, hexanes	<b>7</b> (47%)

<sup>a</sup> The reaction of **1** ( $\delta^{31}P$ : 154.4) was monitored by <sup>31</sup>P-NMR-spectroscopy; isolated yields are given;

<sup>b</sup> Only pure BIFOP-Cl (**1**) was recovered (> 91%);

<sup>c</sup> MeLi 1.6 M solution in diethylether; EtLi 0.5 M solution in benzene/cyclohexane (90/10);

<sup>d</sup> Reactions were performed at -78°C for 3 h and subsequently at rt for 3 h;

<sup>e</sup> With KOH (1 M, 0.01 g, 0.18 mmol) in water.

A strong preference for the *minus* (*M*)-biaryl conformation was found in BIFOL (Scheme 3) and was attributed to hydrogen bond linked chiral fenchole units, in the solid state and in solution. [69-73] Similarly, all phosphorus linked BIFOPs exhibit *M*-biaryl axes with dihedral angles varying from -91° to -99° (Scheme 4, Table 2). The alternative *plus* (*P*)-conformations were not found experimentally, they are computed to be disfavored by ca. 20 to 35 kcal mol<sup>-1</sup> (Table 2). As in *M*-BIFOL, [69-73] the strong destabilization of these *plus*-(*P*)-conformations arise from steric repulsion of *endo*-oriented fenchane units in

**Table 2: X-ray structure geometries (cf. Scheme 4) and computed energies of BIFOL and BIFOP-X (1–7).**

BIFOP (-X)	$E_{\text{rel}}$ (kcal mol <sup>-1</sup> ) <sup>a</sup>	BAA (°) <sup>b</sup>	angle sum (°) <sup>c</sup>	FAA-lp (°)	FAA (°)	d (Å) <sup>d</sup>
M-BIFOL	+12.5	-95.0 <sup>e</sup>	-	(25)	(31)	-
<b>1</b> (-Cl)	+28.4	-91.3	305.2	37.9	46.3	2.471
<b>2</b> (-Br)	+35.0	-91.7	306.6	38.9	36.9	2.476
<b>3</b> (-H)	+27.9	-98.2	301.4	30.0	29.7	2.669
<b>5</b> (-nBu)	+26.3	-99.4	303.6	31.4	34.5	2.792
<b>6</b> (-OPh)	+27.7	-93.3	300.0	34.5	44.8	2.567
<b>7</b> (-NEt <sub>2</sub> )	+22.5	-91.1	309.2	35.8	35.1	2.877

<sup>a</sup> Relative Destabilization of *plus* (P) conformations according to B3LYP/6-31G\*\*/PM3 computations;

<sup>b</sup> Biaryl dihedral angle between C2-C1-C1'-C2' atoms (BAA) in degree;

<sup>c</sup> Angle sum at phosphorus atom (pyramidal) in degree;

<sup>d</sup> Distance (d) between phosphorus atoms and the center of the biaryl axis (C1-C1');

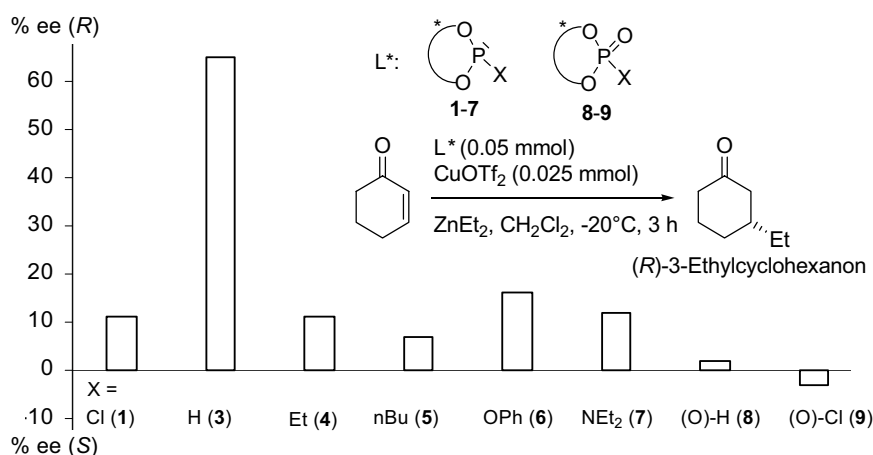
<sup>e</sup> Hydrogend bonded *M*-conformer.

BIFOPs, *endo*-methyl groups are close to the phosphorus atoms (Figure 9).

Free rotation around the fenchyl aryl bonds is hindered in aryl fenchol derivatives by the methyl-methylene-bifurcation of the fenchane scaffolds (Scheme 4). These fenchyl aryl dihedral angles (O<sub>1</sub>-C<sub>2</sub>-C<sub>3</sub>-C<sub>1</sub>', FAA, Scheme 4) are crucial for the "bite" of the chiral diol unit and are constrained between 30° and 46° (Table 2), similar to fenchyl aryl angles previously analyzed in lithium fencholates. [55,56] In BIFOL, the asymmetry of the H-bond gives rise to two different fenchyl aryl angles (25° and 31°, Table 2). [69-73] Likewise, the pyramidal at the phosphorus atoms in BIFOPs distorts the inherent C<sub>2</sub>-symmetry of the biphenylbisfenchol units to asymmetry (C<sub>1</sub>). Fenchanes close to the phosphorus lone pairs (with FAA-lp) can be differentiated from fenchanes close to sub-

stituents at phosphorus (with FAA, Scheme 4). The difference between these two FAA dihedral angles is a measure for the BIFOP-asymmetry, which is small for BIFOP-H (3) and BIFOP-NEt<sub>2</sub> (7), but large for BIFOP-Cl (1) and BIFOP-OPh (6, Table 2).

The phosphorus atoms, essential for coordination to (late transition) metals, exhibit slightly different degrees of pyramidal, as it is measured by angle sums (planarity) from 300° to 309° (Table 2, Scheme 4). The degree of encapsulation of the phosphorus atoms by the fenchane units is measured by the distance (d) of the phosphorus atoms to the center of the biaryl axes (C<sub>1</sub>-C<sub>1</sub>', Scheme 4). The tightest encapsulation and fenchane embedding of phosphorus atoms is apparent for the halophosphites BIFOP-Cl (1, 2.471 Å) and BIFOP-Br (2, 2.476 Å, Table 2), explaining their unusual low reactivity (Table 1).

**Scheme 5: Biphenyl-2,2'-bisfenchol based phosphanes (BIFOPs) as chiral ligands in enantioselective Cu-catalyzed 1,4-additions.**

**Table 3: Enantioselective Cu-catalyzed 1,4-additions of diethylzinc to 2-cyclohexen-1-one (cf. Scheme 5).<sup>a</sup>**

L*, i.e. BIFOP(O)-X	substituent X	yield (%) <sup>b</sup>	%ee (config.) <sup>c</sup>
<b>1</b> <sup>d</sup>	Cl	98 <sup>d</sup>	11 (R) <sup>d</sup>
<b>3</b>	H	92	65 (R)
<b>4</b>	Et	98	11 (R)
<b>5</b>	<i>n</i> Bu	97	7 (R)
<b>6</b>	OPh	73	16 (R)
<b>7</b>	NEt <sub>2</sub>	98	12 (R)
<b>8</b>	(O)-H	89	2 (R)
<b>9</b>	(O)-Cl	87	3 (S)

<sup>a</sup> Reaction conditions: -20°C, 3 h in CH<sub>2</sub>Cl<sub>2</sub>; L\*:Cu(OTf)<sub>2</sub> ratio (2:1);

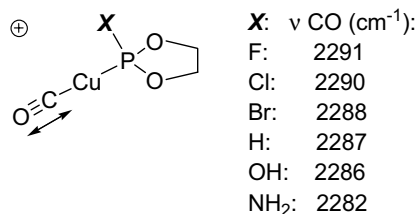
<sup>b</sup> Yield determined by GC;

<sup>c</sup> The ee's are determined by GC with the chiral column lipodex E 0.2 μm, 50 m, 0.25 mm;

<sup>d</sup> Chlorophosphite **1** was converted to P-Et phosphonite BIFOP-Et, **4**.

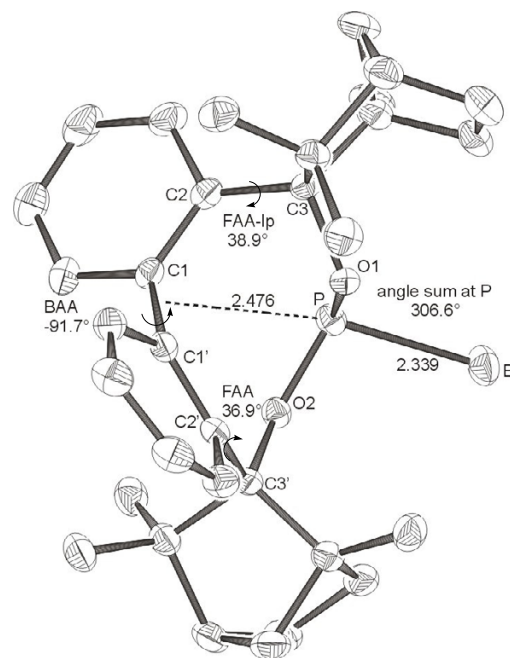
Cu-catalyzed, enantioselective 1,4-additions of diethylzinc to 2-cyclohexen-1-one were employed as test reactions for the monodentate phosphorus ligands BIFOPs **1** and **3**–**7** as well as the oxo-derivatives **8** and **9** (Table 3, Scheme 5).

The low reactivity of the chlorophosphite **1** with metal organic nucleophiles (Table 1) points to its potential suitability as ligand for late, electron-rich transition metals, such as Cu<sup>I</sup>. The rate determining reductive elimination was expected to be favored by the good metal to ligand back bonding properties of the σ\*(P-Cl) acceptor as is well established in phosphites, i.e. σ\*(P-OR), and phosphoramidites, i.e. σ\*(P-NR<sub>2</sub>). Computed anharmonic CO-frequencies on Cu<sup>I</sup>-model complexes indeed point to highest νCO stretching frequencies for P-ligands with strongest acceptor character, i.e. the halophosphites (Scheme 6). [82-86]



**Scheme 6: Anharmonic B3LYP/6-31G\*(C,H,N,O,F,Cl,Br) / SDD(Cu) CO-stretching frequencies to assess metal to ligand back bonding characteristics.**

However, under catalysis conditions, BIFOP-Cl (**1**) converts to the ethylphosphonite BIFOP-Et (**4**), which yields *R*-3-ethylcyclohexanone with 11% ee (Table 3). Apparently, the higher Lewis acidity of organozincs supports faster nucleophilic substitution in (**1**) than with organo-

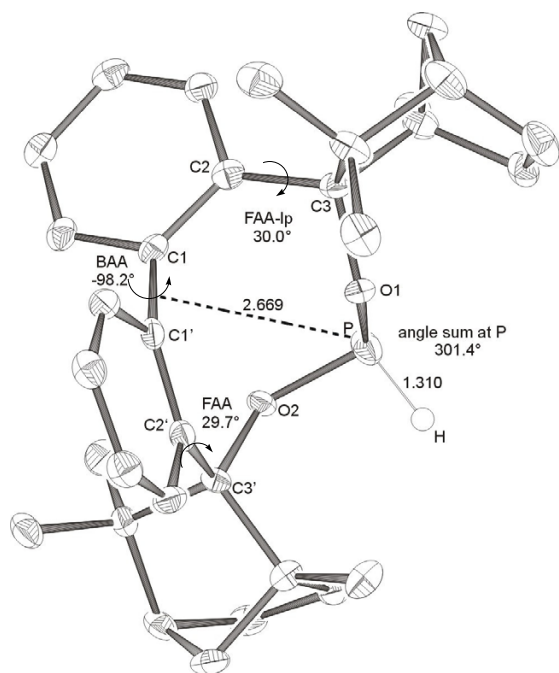


**Figure 2**  
X-ray structures of BIFOP-Br (**2**). Distances are given in Å. (BAA = biaryl angle between C<sub>2</sub>-C<sub>1</sub>-C<sub>1</sub>'-C<sub>2</sub>'; FAA-lp = fenchyl-aryl dihedral angle between C<sub>1</sub>-C<sub>2</sub>-C<sub>3</sub>-O<sub>1</sub>; FAA = fenchyl-aryl dihedral angle between C<sub>1</sub>'-C<sub>2</sub>'-C<sub>3</sub>'-O<sub>2</sub>). The probability of ellipsoids is 30% (CCDC 270532).

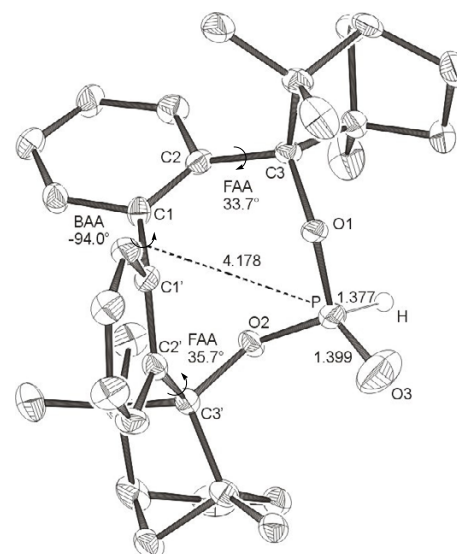
lithiums (Table 1). Unprecedented however is the P-H phosphonite BIFOP-H (**3**), which yields with 65 % ee a much higher enantioselectivity than the corresponding phosphite (BIFOL-OPh, 16%ee) and phosphoramidite (BIFOL-NEt<sub>2</sub>, 12%ee, Table 3). A good back bonding characteristic between halophosphites and phosphites is indeed apparent for the P-H unit (Scheme 6). [88,89] The relative high enantioselectivity of **3** is remarkable, as the asymmetry of **3**, measured from the difference of its fenchyl-aryl angles, is rather small (FAA-lp = 30.0° vs. FAA = 29.7°, Table 2). The phosphorus atom in **3** is only slightly encapsulated by the fenchane moieties, due to the rather long *d*-distance (Scheme 4, Table 2, 2.7 Å) and the low steric shielding by the H-atom. Indeed, P-H phosphonite **3** coordinates tightly to Cu<sup>II</sup>-ions. Metal free BIFOP-H (**3**) gives in CDCl<sub>3</sub> a <sup>31</sup>P-NMR signal at δ = 139.6 with a <sup>1</sup>J (P,H) coupling of 214.5 Hz. With half of an equivalent of Cu(OTf)<sub>2</sub>, no free **1** is detectable, only a [(**1**)<sub>2</sub>Cu(OTf)<sub>2</sub>] complex is evident from a <sup>31</sup>P-NMR signal at δ = 81.1 with a stronger <sup>1</sup>J (P,H) coupling of 299.5 Hz. [90-91]

## Conclusion

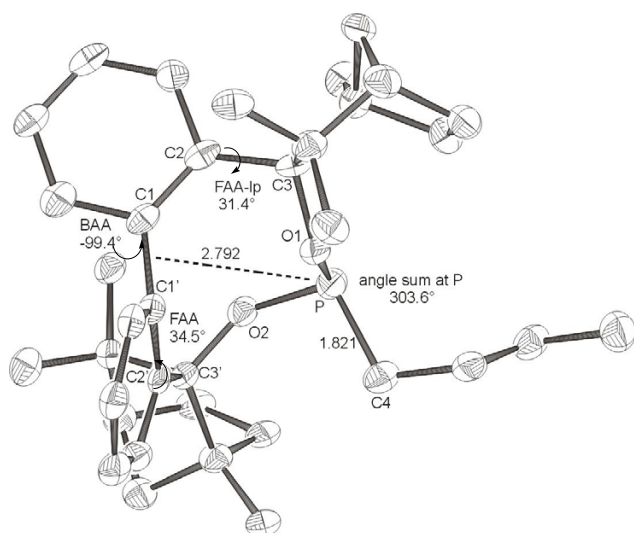
The large steric demand of embedding fenchane units makes phosphorus atoms in BIFOPs hardly accessible by nucleophilic reagents and leads to an unusually high sta-



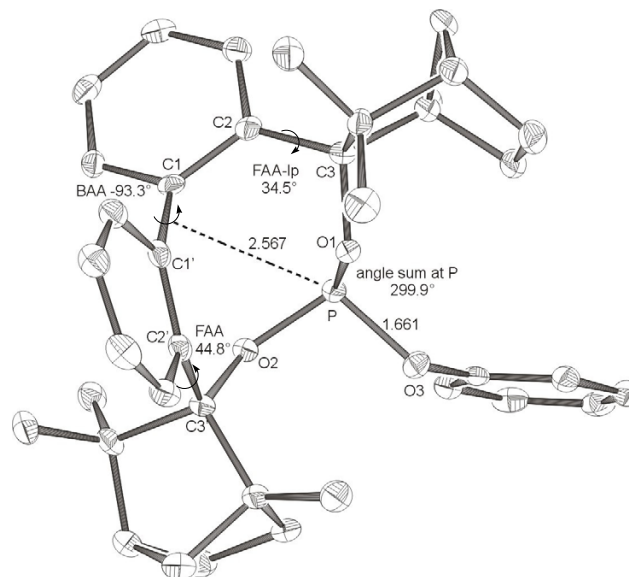
**Figure 3**  
X-ray structures of BIFOP-H (3). Distances are given in Å. (BAA = biaryl angle between  $C_2-C_1-C_1'-C_2'$ ; FAA-lp = fenchyl-aryl dihedral angle between  $C_1-C_2-C_3-O_1$ ; FAA = fenchyl-aryl dihedral angle between  $C_1'-C_2'-C_3'-O_2$ ). The probability of ellipsoids is 40% (CCDC 270533).



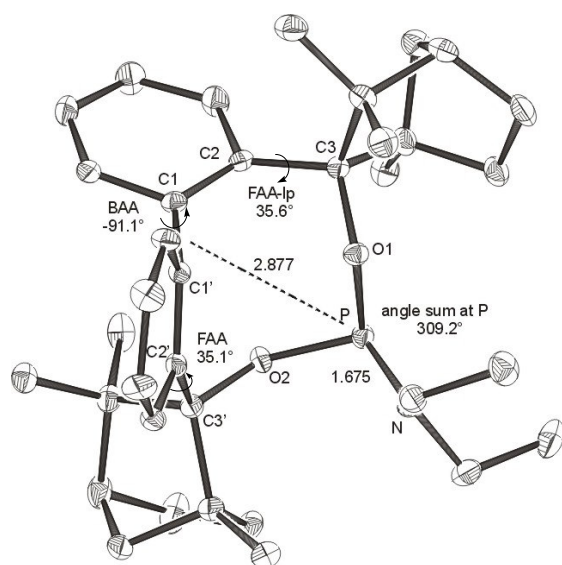
**Figure 5**  
X-ray structures of BIFOP(O)-H (8). Distances are given in Å. (BAA = biaryl angle between  $C_2-C_1-C_1'-C_2'$ ; FAA-lp = fenchyl-aryl dihedral angle between  $C_1-C_2-C_3-O_1$ ; FAA = fenchyl-aryl dihedral angle between  $C_1'-C_2'-C_3'-O_2$ ). The probability of ellipsoids is 40% (CCDC 270537).



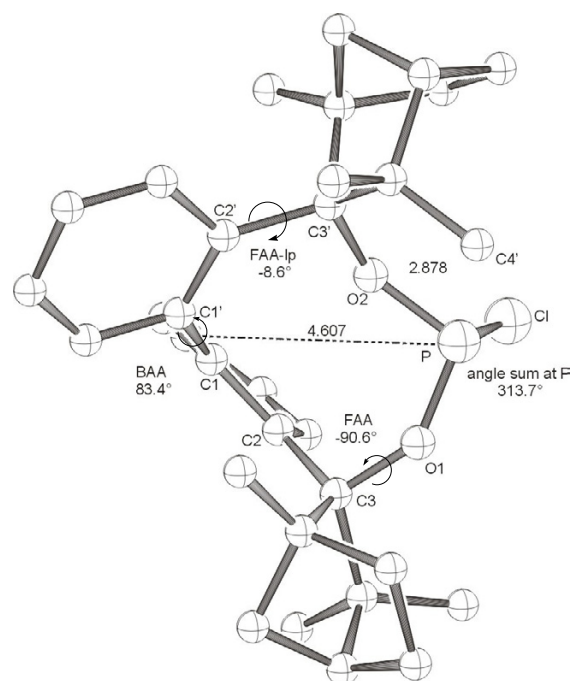
**Figure 4**  
X-ray structures of BIFOP-nBu (5). Distances are given in Å. (BAA = biaryl angle between  $C_2-C_1-C_1'-C_2'$ ; FAA-lp = fenchyl-aryl dihedral angle between  $C_1-C_2-C_3-O_1$ ; FAA = fenchyl-aryl dihedral angle between  $C_1'-C_2'-C_3'-O_2$ ). The probability of ellipsoids is 40% (CCDC 270534).



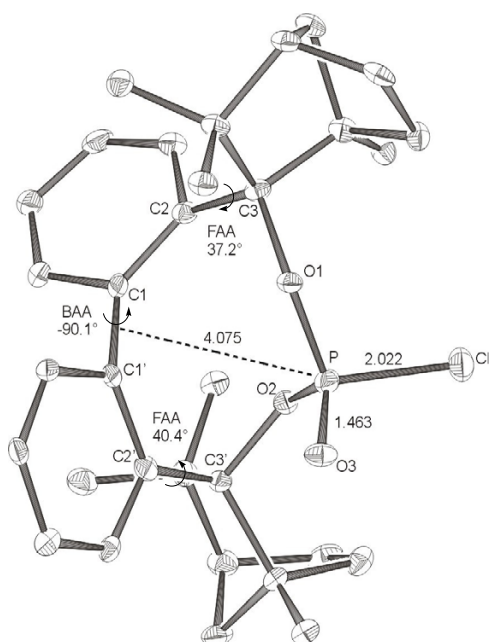
**Figure 6**  
X-ray structures of phosphite BIFOP-OPH (6). Distances are given in Å. (BAA = biaryl angle between  $C_2-C_1-C_1'-C_2'$ ; FAA-lp = fenchyl-aryl dihedral angle between  $C_1-C_2-C_3-O_1$ ; FAA = fenchyl-aryl dihedral angle between  $C_1'-C_2'-C_3'-O_2$ ). The probability of ellipsoids is 40% (CCDC 270535).



**Figure 7**  
X-ray structures of phosphoramidite BIFOP-NEt<sub>2</sub> (7). Distances are given in Å. (BAA = biaryl angle between C<sub>2</sub>-C<sub>1</sub>-C<sub>1</sub>'-C<sub>1</sub>'; FAA-lp = fenchyl-aryl dihedral angle between C<sub>1</sub>-C<sub>2</sub>-C<sub>3</sub>-O<sub>1</sub>; FAA = fenchyl-aryl dihedral angle between C<sub>1</sub>'-C<sub>2</sub>'-C<sub>3</sub>'-O<sub>2</sub>). The probability of ellipsoids is 40% (CCDC 270536).



**Figure 9**  
Computed geometry (PM3) of *plus-(P)*-BIFOP-Cl with *unnatural plus-(P)*-biaryl conformation. Distances are given in Å. (BAA = biaryl angle between C<sub>2</sub>-C<sub>1</sub>-C<sub>1</sub>'-C<sub>2</sub>'; FAA-lp = fenchyl-aryl dihedral angle between C<sub>1</sub>-C<sub>2</sub>-C<sub>3</sub>-O<sub>1</sub>; FAA = fenchyl-aryl dihedral angle between C<sub>1</sub>'-C<sub>2</sub>'-C<sub>3</sub>'-O<sub>2</sub>).



**Figure 8**  
X-ray structures of BIFOP(O)-Cl (9). Distances are given in Å. (BAA = biaryl angle between C<sub>2</sub>-C<sub>1</sub>-C<sub>1</sub>'-C<sub>2</sub>'; FAA-lp = fenchyl-aryl dihedral angle between C<sub>1</sub>-C<sub>2</sub>-C<sub>3</sub>-O<sub>1</sub>; FAA = fenchyl-aryl dihedral angle between C<sub>1</sub>'-C<sub>2</sub>'-C<sub>3</sub>'-O<sub>2</sub>). The probability of ellipsoids is 40% (CCDC 270538).

bility, e.g. for the chlorophosphite BIFOP-Cl (1). While 1 converts to the P-Et phosphonite BIFOP-Et (4) during Cu-catalyzed 1,4-additions of diethylzinc to cyclohexenone, the P-H phosphonite BIFOP-H (3) is stable and gives even a higher enantioselectivity than a corresponding phosphite or phosphoramidite. Hence, the large steric demand and the relatively low accessibility of the phosphorus atoms in biphenyl-2,2'-bisfenchylphosphites (BIFOPs) founds the special suitability for BIFOP-H (3) as P-H phosphonite ligand in transition metal catalysis. This points to promising applications of 3 or analogue P-H ligands in enantioselective catalysis.

## Additional material

### Additional file 1

Experimental details

Click here for file

[<http://www.biomedcentral.com/content/supplementary/1860-5397-1-6-S1.doc>]

## Acknowledgements

We are grateful to the Fonds der Chemischen Industrie for financial support as well as for a Dozenten-Stipendium to B. G. We also thank the Deutsche Forschungsgemeinschaft (DFG) for support (GO-930/9, GO-930/7 and GO-930/5). We are grateful to the Bayer AG, the BASF AG, the Wacker AG, the Degussa AG, the Raschig GmbH, the Symrise GmbH, the Solvay GmbH and the OMG AG for generous gifts of laboratory equipment and chemicals.

## References

- d'Augustin M, Palais L, Alexakis A: *Angew Chem* 2005, **117**:1440. *Angew Chem, Int Ed* **2005**, **44**(9), 1376
- Sebesta R, Pizzuti MG, Boersma AJ, Minnaard AJ, Feringa BL: *Chemical Communications* 2005, **13**:1711.
- Shi M, Zhang W: *Adv Synth Catal* 2005, **347**:535.
- Wu X-Y, Li X-G, Zhao G: *Lett Org Chem* 2005, **2**(1):65.
- Bonini BF, Capito E, Comes-Franchini M, Ricci A, Bottoni A, Bernardi F, Miscione G, Giordano P, Cowley LAR: *Eur J Org Chem* 2004, **21**:4442.
- Telfer SG, Kuroda R: *Coord Chem Rev* 2003, **242**(1-2):33.
- Hayashi T, Yamasaki K: *Chem Rev* 2003, **103**:2829.
- Alexakis A, Benhaim C: *Eur J Org Chem* 2002, **19**:3221.
- Feringa BL, Naasz R, Imbos RA, Leggy A: *Modern Organocopper Chemistry* 2002:224.
- Krause N, Hoffmann-Roder A: *Synthesis* 2001, **2**:171.
- Krause N: *Organic Synthesis Highlights IV* Edited by: Schmalz H-G. Wiley-VCH, Weinheim; 2000:182.
- Tomioka K, Nagaoka Y: **Chapter 31.1**. In *Comprehensive Asymmetric Catalysis I-III Volume 2000*. Issue supplement 2 Edited by: Jacobsen EN, Pfaltz A, Yamamoto H. Springer, Heidelberg; 2004:109.
- Yamanoi Y, Imamoto T: *J Org Chem* 1999, **64**:2988.
- Yan M, Yang L-W, Wong K-Y, Chan ASC: *Chem Commun* 1999:11.
- Zhang F-Y, Chan ASC: *Tetrahedron: Asymmetry* 1998, **9**:1179.
- Krause N: *Angew Chem* 1998, **110**:295. *Angew Chem, Int Ed* **1998**, **37**, 283
- Krause N, Gerold A: *Angew Chem* 1997, **109**:194. *Angew Chem Int Ed* **1997**, **36**, 186
- Knöbel AKH, Escher IH, Pfaltz A: *Synlett* 1997, **36**:2620. For Rh-catalyzed 1,4-additions.
- Hilgraf R, Pfaltz A: *Adv Synth Catal* 2005, **347**:61.
- Sebesta R, Pizzuti MG, Boersma AJ, Minnaard AJ, Feringa BL: *Chem Commun* 2005:1711.
- Zeng Q-H, Hu X-P, Duan Z-C, Liang X-M, Zheng Z: *Tetrahedron: Asymmetry* 2005, **16**:1233.
- Reetz MT, Ma J-A, Goddard R: *Angew Chem* 2005, **117**:416. *Angew Chem Int Ed. Engl.* **2005**, **44**, 412
- Hu X-P, Zhuo Zheng: *Org Lett* 2005, **7**:419.
- Piarulli U, Daubos P, Clavarie C, Monti C, Gennai C: *J Org Chem* 2005:895.
- Pfaltz A: *Chimia* 2004, **58**(1-2):49.
- Tissot-Crosset K, Polet D, Alexakis A: *Angew Chem* 2004, **116**:2480. *Angew Chem Int Ed* **2004**, **43**, 2426
- Elkema R, van Delden RA, Feringa BL: *Angew Chem* 2004, **116**:5123. *Angew Chem Int Ed Engl* **2004**, **43**, 5013
- Duursma A, Boiteau J-G, Lefort L, Boogers JAF, de Vries AHM, de Vries JG, Minnaard AJ, Feringa BL: *J Org Chem* 2004, **69**:8045.
- Alexakis A, Polet D, Rosse S, March S: *J Org Chem* 2004, **69**:5660.
- Choi H, Hua Z, Ojima I: *Org Lett* 2004, **6**:2689.
- Alexakis A, Polet D, Rosset S, March S: *J Org Chem* 2004, **69**:5660.
- Kinoshita N, Marx KH, Tanak K, Tsubaki K, Kawabata T, Yoshikai N, Nakamura E, Fuji K: *J Org Chem* 2004, **69**:7960.
- Hannen P, Militzer H-C, Vogl EM, Rampf FFA: *Chem Commun* 2003:2210.
- Piarulli U, Clavarie C, Daubos P, Gennai C, Minnaard AJ, Feringa BL: *Org Lett* 2003, **5**:4493.
- Kočovský P, Vyskočil Š, Sorcina M: *Chem Rev* 2003, **103**:3213.
- Chen Y, Yekta S, Yudin A: *Chem Rev* 2003, **103**:3155.
- Ansell J, Wills M: *Chem Soc Rev* 2002, **31**:259.
- Blume F, Zemolka S, Fey T, Kranich R, Schmalz H-G: *Adv Synth Catal* 2002, **344**:868.
- Seebach D, Beck AK, Heckel A: *Angew Chem* 2001, **113**:96. *Angew Chem Int Ed* **2001**, **40**, 92
- Naasz R, Arnold LA, Minnaard AJ, Feringa BL: *Angew Chem* 2001, **113**:953. *Angew Chem Int Ed.* **2001**, **40**, 927
- Alexakis A, Burton J, Vastra J, Benhaim C, Fournieux X, Heuvel Avd, Leveque J-M, Maze F, Rosset S: *Eur J Org Chem* 2000:4011.
- Feringa BL: *Acc Chem Res* 2000, **33**:346.
- Nakanishi W, Yamanaka M, Nakamura E: *J Am Chem Soc* 2005, **127**:1446.
- Pfretzschner T, Kleemann L, Janza B, Harms K, Schrader T: *Chem Eur J* 2004, **10**:6048.
- Nakamura E, Mori S: *Angew Chem* 2000, **112**:3902. *Angew Chem Int Ed.* **2000**, **39**, 3750
- John M, Auel C, Behrens C, Marsch M, Harms K, Bosold F, Gschwind RM, Rajamohanan PR, Boche G: *Chem Eur J* 2000, **6**:3060.
- Mori S, Nakamura E: *Chem Eur J* 1999, **5**:1534.
- Canisius J, Gerold A, Krause N: *Angew Chem* 1999, **111**:1727. *Angew Chem Int Ed* **1999**, **38**, 1644.
- Alezra V, Bernardinelli G, Corminboeuf C, Frey U, Kündig EP, Merbach AW, Saudan SM, Viton F, Weber J: *J Am Chem Soc* 2004, **126**:4843.
- van der Slot SC, Duran J, Luten J, Kamer PCJ, van Leeuwen PWNM: *Organometallics* 2002, **21**:3873.
- Kündig EP, Bourdin B, Bernardinelli G: *Angew Chem* 1994, **106**:1931. *Angew Chem Int Ed* **1994**, **33**, 1856
- Burford N, Herbert DE, Ragona PJ, McDonald R, Ferguson MJ: *J Am Chem Soc* 2004, **126**:17067.
- Goldfuss B: *Synthesis* 2005:2271.
- Goldfuss B, Steigelmann M, Löschnann T, Schilling G, Rominger F: *Chem Eur J* 2005, **11**:4019.
- Goldfuss B: "Enantioselective Addition of Organolithiums to C = O and Ethers". In *Topics in Organometallic Chemistry* Edited by: Hodgson DM. Springer, Heidelberg; 2003.
- Goldfuss B, Steigelmann M, Rominger F, Urtel H: *Chem Eur J* 2001:4456.
- Goldfuss B, Steigelmann M, Rominger F: *Angew Chem* 2000, **112**:4299. *Angew Chem Int Ed* **2000**, **39**, 4133
- Goldfuss B, Khan SI, Houk KN: *Organometallics* 1999, **18**:2927.
- Goldfuss B, Eisenträger F: *Aust J Chem* 2000, **53**:209.
- Steigelmann M, Nisar Y, Rominger F, Goldfuss B: *Chem Eur J* 2002, **8**:5211.
- Goldfuss B, Steigelmann M, Khan SI, Houk KN: *J Org Chem* 2000, **65**:77.
- Goldfuss B, Steigelmann M: *J Mol Model* 2000, **6**:166.
- Goldfuss B, Steigelmann M, Rominger F: *Eur J Org Chem* 2000:1785.
- Goldfuss B, Löschnann T, Rominger F: *Chem Eur J* 2004, **10**:5422.
- Vázquez J, Goldfuss B, Helmchen G: *J Organomet Chem* 2002, **641**(1-2):67.
- Kollmar M, Steinhagen H, Janssen JP, Goldfuss B, Malinovsky SA, Vázquez J, Rominger F, Helmchen G: *Chem Eur J* 2002, **8**:3103.
- Kollmar M, Goldfuss B, Reggelin M, Rominger F, Helmchen G: *Chem Eur J* 2001, **7**:4913.
- Goldfuss B, Kazmaier U: *Tetrahedron* 2000, **56**:6493.
- Goldfuss B, Rominger F: *Tetrahedron* 2000, **56**:881.
- Panev S, Linden A, Dimitrov V: *Tetrahedron: Asymmetry* 2001, **12**:1313.
- Dimitrov V, Linden A, Hesse M: *Tetrahedron: Asymmetry* 2001, **12**:1331.
- Dimitrov V, Dobrikov G, Genov M: *Tetrahedron: Asymmetry* 2001, **12**:1323.
- Dimitrov V, Rentsch GH, Linden A, Hesse M: *Helv Chim Acta* 2003, **86**:106.
- Johes PG, Kunze C, Thonnessen H, Schmutzler R: *Acta Crystallogr, Sect E* 2002, **58**:1432.
- Chandrasekaran A, Day RO, Sood P, Timosheva NV, Sherlock DJ, Holmes RR: *Phosphorus, Sulfur, Silicon, Relat Elem* 2000, **160**:1.
- Sherlock DJ, Chandrasekaran A, Day RO, Holmes RR: *Inorg Chem* 1997, **36**:5082.
- Cattani-Lorente M, Geoffroy M, Mishra SP, Weber J, Bernardinelli G: *J Am Chem Soc* 1986, **108**:7148. BIFOP-Cl (1) and BIFOP-Br (2) appear to be the first chiral halophosphites, which are characterized by X-ray-analysis.
- Oh-Seuk L, Kiyull Y, Keum Duck K, In Sun K, Chan-Kyung K, Ikchoon L: *J Comp Chem* 2004, **25**(14):1740.
- Haake P, Ossip PS: *J Am Chem Soc* 1971:6924.
- Jiang X-Bin, Minnaard AJ, Hessen B, Feringa BL, Duchateau ALL, Andrien JGO, Boogers JAF, de Vries JG: *Org Lett* 2003, **5**:1503.
- Lam TCH, Mak W-L, Wong V-L, Kwong H-L, Sung HHY, Lo SMF, Williams ID, Leung W-H: *Organometallics* 2004, **23**:1247.
- Gaussian 03, Revision C.02, Frisch MJ, Trucks GW, Schlegel HB, Scuseria GE, Robb MA, Cheeseman JR, Montgomery JA Jr, Vreven T,



Kudin KN, Burant JC, Millam JM, Iyengar SS, Tomasi J, Barone V, Mennucci B, Cossi M, Scalmani G, Rega N, Petersson GA, Nakatsuji H, Hada M, Ehara M, Toyota K, Fukuda R, Hasegawa J, Ishida M, Nakajima T, Honda Y, Kitao O, Nakai H, Klene M, Li X, Knox JE, Hratchian HP, Cross JB, Adamo C, Jaramillo J, Gomperts R, Stratmann RE, Yazyev O, Austin AJ, Cammi R, Pomelli C, Ochterski JW, Ayala PY, Morokuma K, Voth GA, Salvador P, Dannenberg JJ, Zakrzewski VG, Dapprich S, Daniels AD, Strain MC, Farkas O, Malick DK, Rabuck AD, Raghavachari K, Foresman JB, Ortiz JV, Cui Q, Baboul AG, Clifford S, Cioslowski J, Stefanov BB, Liu G, Liashenko A, Piskorz P, Komaromi I, Martin RL, Fox DJ, Keith T, Al-Laham MA, Peng CY, Nanayakkara A, Challacombe M, Gill PMW, Johnson B, Chen W, Wong MW, Gonzalez C, Pople JA: Gaussian, Inc., Wallingford CT; 2004. All computed structures were fully optimized and characterized by harmonic or anharmonic frequency computations using GAUSSIAN03

83. Becke AD: *J Chem Phys* 1993, **98**:5648.
84. Lee C, Yang W, Parr RG: *Phys Rev B* 1988, **37**:785.
85. Stephens PJ, Devlin FJ, Chabalowski CF, Frisch MJ: *J Phys Chem* 1994, **98**:11623. Implementation
86. Leininger T, Nicklass A, Stoll H, Dolg M, Schwerdtfeger P: *J Chem Phys* 1996, **105**:1052. SDD-basis set
87. Ostermeier M, Prieß J, Helmchen G: *Angew Chem* 2002, **114**:625. For applications of hydridophosphanes, i.e.: R<sub>2</sub>P-H, in enantioselective catalyses
88. Nifantiev EE, Sorokina SF, Borisenko AA, Zavalishin AI, Vorobjeva LA: *Tetrahedron* 1981, **37**:3183. For syntheses of P-H phosphonites (i.e. (RO)<sub>2</sub>P-H) and,
89. Centofanti LF: *Inorg Chem* 1973, **12**:1131.