

Research

Open Access

## Associations between dietary habits and body mass index with gut microbiota composition and fecal water genotoxicity: an observational study in African American and Caucasian American volunteers

Volker Mai\*<sup>1</sup>, Quintece M McCrary<sup>2</sup>, Rashmi Sinha<sup>3</sup> and Michael Glei<sup>4</sup>

Address: <sup>1</sup>Microbiology and Cell Science, Emerging Pathogens Institute, University of Florida, Gainesville, FL, USA, <sup>2</sup>Food Science and Technology, University of Maryland Eastern Shore, Princess Anne, MD, USA, <sup>3</sup>DCEG, National Cancer Institute, Bethesda, MD, USA and <sup>4</sup>Institute for Nutrition, Department for Nutritional Toxicology, Friedrich-Schiller-University, Jena, Germany

Email: Volker Mai\* - [vmai@ufl.edu](mailto:vmai@ufl.edu); Quintece M McCrary - [qmmccrary@umes.edu](mailto:qmmccrary@umes.edu); Rashmi Sinha - [sinhar@exchange.nih.gov](mailto:sinhar@exchange.nih.gov); Michael Glei - [Michael.Glei@uni-jena.de](mailto:Michael.Glei@uni-jena.de)

\* Corresponding author

Published: 21 October 2009

Received: 15 June 2009

*Nutrition Journal* 2009, **8**:49 doi:10.1186/1475-2891-8-49

Accepted: 21 October 2009

This article is available from: <http://www.nutritionj.com/content/8/1/49>

© 2009 Mai et al; licensee BioMed Central Ltd.

This is an Open Access article distributed under the terms of the Creative Commons Attribution License (<http://creativecommons.org/licenses/by/2.0>), which permits unrestricted use, distribution, and reproduction in any medium, provided the original work is properly cited.

### Abstract

**Background:** African Americans (AA) suffer from an increased incidence and mortality of colorectal cancer (CRC). Environmental exposures including dietary habits likely contribute to a high burden of CRC, however, data on the dietary habits of AA is sparse. Diet might change the composition and the activities of the intestinal microbiota, in turn affecting fecal genotoxicity/mutagenicity that is thought to be associated with carcinogenesis.

**Methods:** We assessed dietary habits by food frequency questionnaire and by food records in 52 AA and 46 CA residents of the Eastern Shore of MD. Fecal microbiota composition was determined using 16S rRNA based methods and fecal genotoxicity measured using the Comet assay.

**Results:** AA reported an increased intake of heterocyclic amines and a decreased dietary intake of vitamins including vitamin D ( $p < 0.05$ ) that correlated with differences in fecal microbiota composition but not fecal genotoxicity. Intake of dietary fiber, calcium, total fat and heterocyclic amines correlated with differences in microbiota composition. Total bacterial counts/g of stool and raw counts of *Bacteroides* were increased in AA. In contrast to a previous study, BMI was not associated with proportions of *Bacteroides*.

**Conclusion:** Dietary habits of African Americans, including increased HCA intake and decreased vitamin D intake might at least partially contribute to CRC through modifications of gut microbiota composition that result in changes of the intestinal milieu.

### Introduction

Colorectal cancer (CRC) is thought to be strongly associated with environmental exposures including diet. Components ingested through the diet are a major source for

exposure of the colonic epithelium to mutagenic compounds that may cause both initiation of cell transformation and tumor progression [1,2]. The objective of the current study was to determine if dietary habits, previ-

ously shown to differ between African Americans (AA) and Caucasian Americans (CA), effect the composition of gut microbiota and result in differences in fecal water cytotoxicity/genotoxicity.

AA suffer from an increased incidence and mortality of CRC in comparison to CA (American Cancer Society: Statistics for 2008, [http://www.cancer.org/docroot/stt/stt\\_0.asp?from=fast](http://www.cancer.org/docroot/stt/stt_0.asp?from=fast)). Although the underlying causes for these differences are not well established it is plausible that differences in dietary habits in AA affect the colonic environment by increasing exposure to mutagens directly as well as indirectly through changes in the composition of the metabolically active gut microbiota [3]. In a previous large study of associations between diet and CRC in AA and CA in North Carolina differences between the two racial groups were detected in the intake of micro- as well as macronutrients [4-6]. This study also suggested that associations between diet and CRC might differ between the two racial groups. One observation in the above study was an increased intake of heterocyclic amines (HCAs) by AA. HCAs such as 2-amino-1-methyl-6-phenyl-imidazo[4,5-b]pyridine (PhIP), and 2-amino-3,8-dimethylimidazo[4,5-f]quinoxaline (MeIQx), and also benzo[a]pyrene (Bap) a polycyclic aromatic hydrocarbon (PAH), are possible human carcinogens formed during meat cooking. Large amounts of HCA are formed with longer cooking times, internal temperatures of between 150°C and 200°C, and greater external charring [7], typically achieved with cooking methods such as barbeque.

Humans harbor in their guts a complex intestinal microbiota that varies in its composition between individuals. Although recent studies have shed some light on the complexity of the gut microbiota in a limited number of individuals, the extent of microbiota diversity and associations with dietary habits are still poorly understood [8]. Tremendous advances in our understanding of the composition and activities of the gut microbiota have recently been made, however, we still do not fully understand the degree of complexity or the dynamics of the human gut microbiota [9,10]. It is now well established that the human gut microbiota is phylogenetically as well as metabolically very diverse and makes important contributions to the physiology of its human host [11,12]. Eloquent studies have shown communication between gut microbiota and the human host, a requirement of gut microbiota for appropriate priming and development of the immune system and associations between gut microbiota and obesity mediated by the induction/suppression of various human factors [13-17]. The host microbiota can have profound effects on nutrient acquisition and sequestering, immune priming and reactivity, as well as direct effects on carbohydrate and other compound levels in the systemic circulation [18,19]. The microbiota has

long been suspected to be associated with health as well as with diseases including inflammatory bowel diseases and CRC, recent data supports an association between reduced microbiota diversity and Crohn's disease [20].

Fecal water, the water-soluble fraction obtained as the supernatant after high speed centrifugation of total feces, reflects the luminal content of both risk factors and protective factors [21]. Cytotoxicity/genotoxicity of fecal water is a useful biomarker in studying the impact of environmental factors on exposure of the gut to carcinogens and the modification of this exposure by dietary habits [22-24]. Cytotoxicity/genotoxicity of fecal water can be assessed *in vitro* by exposing cultured human colon cells, followed by assessment of cell viability and DNA damage in single cells by the Comet assay [25]. Fecal water genotoxicity has previously been shown to be related to colon carcinogenesis in animals [26]. In human studies, fecal water genotoxicity was higher after a diet rich in meat as compared to a diet enriched in fiber [27]. Supplementation with probiotic yoghurts has been shown to reduce fecal water genotoxicity [28]. There also appears to be an effect modification by smoking status as supplementation with bread enriched with prebiotics and antioxidants reduced the fecal water genotoxicity in non-smokers but not in smokers, an effect which differed by the status of GST M-polymorphisms [29].

In this study we investigated if differences in dietary habits between the two groups are associated with cytotoxicity/genotoxicity of fecal water and with fecal microbiota composition.

## Materials and methods

### Study design

#### Target population

We included subjects that were at least 40 years of age, self identified as being of AA or CA descent and able to provide informed consent and information regarding dietary history as well as basic demographic data. We excluded subjects that had a prior diagnosis of cancer (other than skin cancer); suffered from inflammatory bowel disease; had chronic diarrhea or acute diarrhea within the past 4 weeks; were hospitalized or used systemic antibiotics within the past 4 weeks. A total of 98 subjects, 52 AA and 46 CA were enrolled. To evaluate associations between obesity and microbiota composition all 14 lean (BMI <25) and 14 randomly chosen obese subjects (BMI >30) were selected. The study was approved by the Institutional Review Boards at UMB and UMES.

#### Study logistics

Subjects were approached about the study through local community groups. After enrollment, subjects received a study kit that included all questionnaires as well as a stool

collection kit. After filling out the questionnaires subjects kept a four day food record and collected the first stool sample after its completion.

#### *Assessment of diet and medical history*

Subjects completed the self-administered Block 98 food frequency questionnaire (FFQ) that assessed their dietary habits [30], and a specific questionnaire assessing consumption of meat and its preparation (MMQ) [31]. Subjects also kept a food record of all foods and drinks consumed for four consecutive days. Medical history and demographic information was assessed using a scan able questionnaire specifically developed for this study.

#### *Stool collection*

After completing a four day food record subjects collected a freshly voided stool sample. The stool sample was transported to the laboratory in a plastic bag containing an ice pack within six hours. Upon arrival in the laboratory each sample was immediately homogenized and fixed for FISH analysis or frozen -80°C for all other analyses.

#### *Analytical cohort*

From the 98 subjects that completed the study protocol we removed subjects with low quality dietary data, those that skipped more than 10 questions on the FFQ and those that reported a daily calorie intake of less than 400 or more than 5200 calories. 42 AA and 40 CA remained in the FFQ/MMQ analysis and 39 AA and 38 CA in the Food Record analysis. All 14 lean study subjects (BMI <25) and 14 randomly chosen obese subjects (BMI >30) were included in the studies of the association between microbiota and obesity.

### **Microbiota analysis**

#### *DNA Extraction*

DNA was isolated from 200 mg of stool for each sample by using a modified QIAmp DNA Stool Mini kit (Qiagen, Cat. No. 51504, Valencia, CA). Noted modifications were the addition of 5 glass beads to the initial buffer solution to allow better homogenization of the stool while vortexing and the addition of 0.3 g zirconia beads (Biospec Products Inc., Cat. No. 11079101z, Bartlesville, OK) followed by 3 min of shaking in a Mini-BeadBeater (Glen Mills Inc., Clifton, NJ), prior to the addition of the Inhibit-EX tablet, to enhance the lysis of bacterial cell walls. Purified DNA samples were eluted in a final volume of 50 µl and stored at -70°C until analyzed.

#### *Denaturing Gradient Gel Electrophoresis (DGGE)*

A 457-bp fragment from the V6 to V8 region of the bacterial 16S rDNA gene was amplified with primers U968-GC (5' CGC CCG GGG CGC GCC CCG GGC GGG GCG GGG GCA CGG GGG GAA CGC GAA GAA CCT TAC) and L1401 (5' GCG TGT GTA CAA GAC CC), as described by

Zoetendal *et al.* [32]. The GC clamp facilitates separation by DGGE. DGGE was performed in an 8% (wt/vol) polyacrylamide gel with a denaturing gradient ranging from 40% to 50% at the top and bottom of the gel, respectively (100% denaturing conditions were defined as 7 M urea and 40% formamide). After electrophoresis (16 h, 65 V, 60°C), the gels were stained with SYBER Green (Novex, San Diego, CA) and scanned/analyzed with Quantity One and Diversity Database software (Bio-Rad, Hercules, CA).

#### *Fluorescent in situ hybridization (FISH)*

Aliquots (0.5 ml) of homogenized feces were added to PBS (4.5 ml), and the samples were prepared for FISH analysis as described previously [33]. Briefly, the mixtures were processed by vortexing them with 3-5 glass beads for 2 min, removing fecal debris by centrifugation at low speed, fixing the bacteria-containing supernatant fluids overnight in PBS containing 3% paraformaldehyde, and storing aliquots of the fixed bacterial preparations at -70°C until hybridization was performed. Hybridization was performed by applying aliquots (10 µl) of appropriate dilutions of the fixed bacterial preparations to gelatin-coated microscopic slides, fixing the specimens to the slides with 95% ethanol, and hybridizing with 10 ng of the appropriate probe/µl, using the conditions described previously [33-35]. The following probes were used: (i) Bac303 for *Bacteroides* and *Prevotella* [36], (ii) Erec482 for eubacteria, clostridia and ruminococci belonging to *Clostridium* cluster XIVa [33], (iii) Bif164 for bifidobacteria [37], (iv) LAB158 for lactic acid bacteria [38]. After briefly rinsing with distilled water, slides were air-dried rapidly with compressed air and mounted with Vectashield containing DAPI (4',6-diamidino-2-phenylindole) (Vector Labs, Cat. No. H-1200, Burlingame, CA). DAPI and Cy3/FITC positive cells were enumerated in a total of 12 fields at two different dilutions per sample at 100× magnification using a Zeiss axioscope-40 epifluorescence-equipped microscope (Zeiss, Jena, Germany). The proportions of the two bacterial groups were calculated by dividing the number positive for the specific probe by the total bacteria as determined by DAPI. DAPI was used as it allows for the enumeration of total bacteria without the need for a separate hybridization.

#### *Quantitative PCR (qPCR)*

qPCR analysis was performed on a subset of 14 lean (BMI<25) and 16 obese subjects (BMI>30) in duplicate using a qPCR Core kit (Eurogentec, Cat. No. RT-SN10-05NR, San Diego, CA) on a Stratagene MX3000P (La Jolla, CA) in 12.5 µl reaction volumes consisting of 2 µl DNA template (diluted 1:80 in water), 1 × Reaction Buffer, 200 µM dNTP mix, 30 pM forward and reverse primers, 0.025 U/µl HotGoldStar Taq Polymerase, 1 × SYBR Green dye, 30 nM ROX passive reference dye (Stratagene, Cat. No. 600546, La Jolla, CA). The following primers and condi-

tions were used: 1) all eubacteria (V3 F: 5'-CCTACG-GGAGGCAGCAG-3'; R: 5'-ATTACCGCGGCTGCTGG-3', 56°C, 3 mM MgCl<sub>2</sub>); 2) Bacteroides-Prevotella-Porphyrromonas group (Bac F: 5'-GGTGTCCGCTTAAGTGCCAT-3'; R: 5'-CGGA(C/T)GTAAGGGCCGTGC-3', 68°C, 3 mM MgCl<sub>2</sub>); Clostridium coccoides-Eubacterium rectale group (Erec F: 5'-CGGTACCTGACTAAGAAGC-3'; R: 5'-AGTTT(C/T)ATTCTTGCGAACG-3', 55°C, 4 mM MgCl<sub>2</sub>) [39]. qPCR conditions were as follows: 10 min at 95°C followed by 40 cycles of 95°C for 30 s, annealing for 1 min (see primer specific temperature above), and extension at 72°C for 30 s.

qPCR standard curves covering the range observed in the samples were generated using a lab internal DNA standard derived from a human stool sample. The proportions of the two groups were calculated by dividing the number positive for the specific primer set by the total number of bacteria determined using the universal V3 primer set.

#### Fecal water analysis

Fecal samples were homogenized using a glass rod. For preparation of the fecal water (FW), the feces were centrifuged (18500 rpm for 2 h at 4°C) and the supernatants were collected. After a further centrifugation step (13000 rpm for 10 min at 4°C) to obtain a clear solution, the liquid phases were quantified, the pH-values were determined with a pH meter, and the samples were aliquoted and stored at -80°C until use.

#### Human tumor cell line HT29

The human colon carcinoma cell line HT29, obtained from the American Tissue Culture Collection (Rockville, MD, USA), was used to test toxicity of the FWs [40]. Cells were kept frozen in liquid Nitrogen until thawed and grown at 37°C in a (95%) humidified incubator (5% CO<sub>2</sub>) in Dulbecco's Modified Eagle Medium (DMEM, Gibco BRL, Eggenstein, Germany) supplemented with 10% fetal calf serum, penicillin (50 U/mL) and streptomycin (50 µg/mL). Passages 22 to 29 (cytotoxicity and genotoxicity studies) and 40-50 (challenge assay) were used for the experiments.

#### Cytotoxicity assay

To determine the effective dose of FW the cell suspensions were initially incubated with 5%, 10% or 20% of FW. All following assays were performed using 20% concentration to reach a measurable DNA damage level. FW was added to 100 µl cell suspension containing 4 × 10<sup>5</sup> HT29 cells. The suspensions were incubated for 30 min in a shaking water bath at 37°C and cytotoxicity was determined using the trypan blue exclusion assay.

#### Genotoxicity assay

DNA damage was measured in 1 × 10<sup>5</sup> cells suspended in low melting point agarose on microscope slides with the single cell microgel electrophoresis assay, also known as the "Comet assay" [41] as previously described [42]. 50 images/slide were evaluated by measuring the percentage of fluorescence in the tail.

#### Challenging treatment to evaluate the antigenotoxic potential

The Comet assay was also used to determine if a pretreatment with fecal water leads to a modified genotoxic effect of H<sub>2</sub>O<sub>2</sub>. Cells were pretreated with 20% fecal water (30 min, 37°C) and subsequently incubated with 75 µM H<sub>2</sub>O<sub>2</sub> for 5 min at 4°C. Viabilities were determined with the trypan blue exclusion test and the remaining cells were analyzed with the Comet assay as described above.

#### Statistics

Multivariate regression analysis (SAS) was used to explore associations between multiple exposure factors and microbiota composition. Shannon Wiener index was used to calculate microbiota diversity of the DGGE profiles. Unpaired t-test and one-way ANOVA (Microsoft Excel version 2003) were used to calculate means and variation and for establishing two-sided significance levels (p < 0.05).

## Results

#### Dietary analysis

After removal of subjects with low quality data 82 subjects, 42 AA and 40 CA, were retained in the analytical cohort for the FFQ based analysis of differences in dietary habits between the two racial groups. Both groups were similar in age and gender distribution. AA had a higher mean weight and body mass index but lower income and lower level of education (Table 1). AA consumed a diet

**Table 1: Study demographics in African American (AA) and Caucasian American (CA) participants**

	AA	CA
#	52	46
Mean age (years)	51.2	52.3
Sex (male)	27%	35%
Mean weight	199lb	177lb
Mean BMI	32	28
Income <30,000US	48%	33%
College degree	33%	61%

BMI is body mass index (weight/height<sup>2</sup> in kg/m<sup>2</sup>).

lower in the percent of calories from fat and higher in percent of calories from carbohydrates (Table 2). AA also had a lower intake of supplemental vitamins including vitamin D. Although total intake of HCA did not differ between the groups, the intake of MeIQx and PhIP, two HCA formed during meat preparation at high temperature, was increased in AA ( $p < 0.05$ ).

Data from the four day food records mostly supported the findings from the FFQ analysis, albeit fewer associations reached statistical significance (data not shown). Specifically, the differences in percent calories from fat and carbohydrates as well as the decreased intake of vitamin D in AA were confirmed with this secondary tool.

#### Fecal water analysis

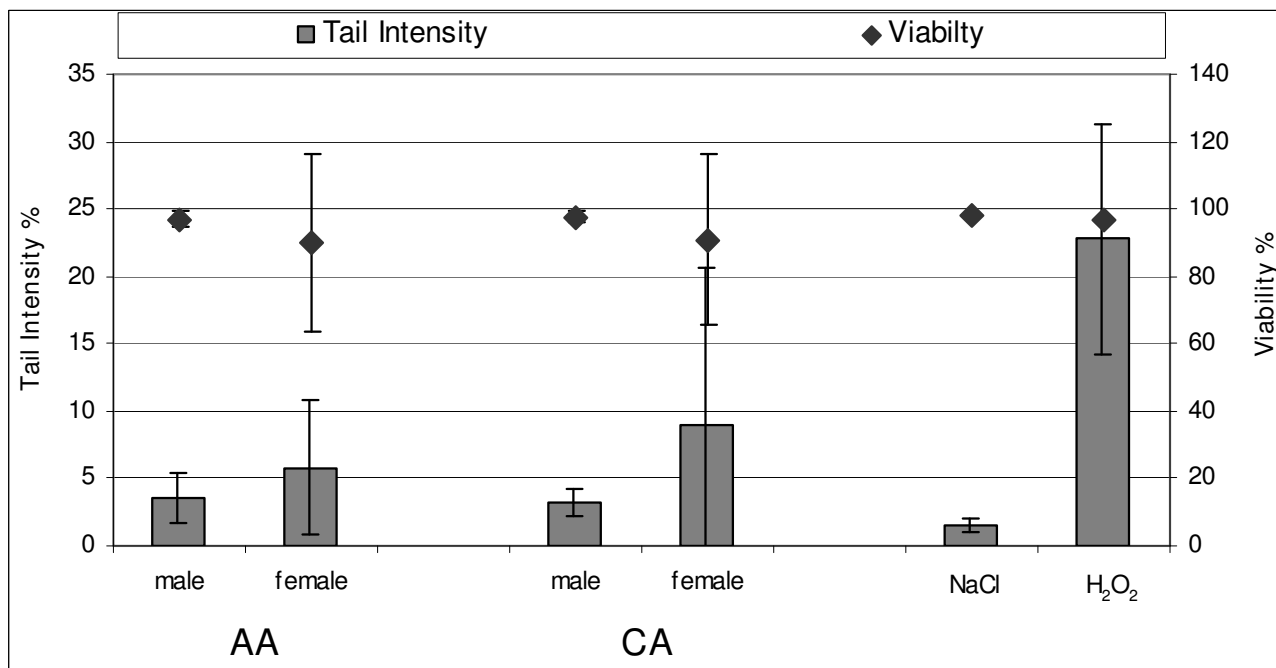
FW analysis was performed in a subset of 21 AA and 22 CA subjects for which we had a sufficient amount of fecal sample. We successfully extracted an average of 18.6% FW from the fecal samples. No difference in yield was observed between the samples from AA and CA. The mean pH of the FW was 6.9, the observed difference between AA (6.7) and CA (7.1) was borderline significant ( $p = 0.05$ ) when both genders were combined and significant in females alone (AA: 6.7, CA: 7.2;  $p < 0.05$ ). To determine the appropriate dose of fecal water for the genotoxicity assay, the cell suspensions were incubated with 5%, 10% or 20% FW. FW induced DNA damage in a dose dependent manner ( $p = 0.052$ ). However, even at the highest dose of 20% FW, which was used in all subsequent studies, we observed only a weak increase in measurable DNA breaks.

We observed no differences in fecal water induced cytotoxicity or genotoxicity between the two racial groups as both, the tail intensity and the viability of the HT 29 cells showed no significant differences between the two groups (Figure 1). When we analyzed the proportion of undamaged cells with a tail intensity  $\leq 6\%$  as an alternative measure of genotoxicity we detected only a small and statistically insignificant difference between the two racial groups that suggested a trend towards slightly reduced genotoxicity in fecal waters from AA. Furthermore the results showed a significantly increased genotoxicity in FW from females that was not associated with cell viability (Figure 1). BMI, age and diet including fat intake and dietary levels of heterocyclic amines were not associated with either genotoxicity or viability (data not shown). The large variation associated with the genotoxicity assay would not have allowed us to detect any small or medium effects with the limited number of subjects included in this study. To evaluate potential protective effects of FW we analyzed the effects of preincubation of HT29 cells with fecal water before challenge with  $H_2O_2$  and measurement of its genotoxicity, using the remaining fecal waters from

**Table 2: Differences in diet between AAs and CAs as determined by FFQ**

	AA (42)	CA (40)	p-value
Total calories (kcal)	1918	1861	0.8
Protein (g)	65	69	0.6
Fat (g)	77	82	0.6
Carbohydrates (g)	248	214	0.19
% kcal from protein	13.8	15.1	0.09
% kcal from fat	35.2	39.2	<b>0.01</b>
% kcal from carbs	52.4	46.2	<b>&lt;0.01</b>
Dietary fiber (g)	17.6	16.7	0.7
Fruit (servings)	1.5	1.5	0.9
Vegetable(servings)	3.1	3.8	0.24
Dairy (servings)	0.68	1.43	<b>&lt;0.01</b>
Calcium (mg)	608	774	0.07
<i>Supplements</i>			
Calcium (mg)	108	418	<b>&lt;0.01</b>
Magnesium (mg)	19	42	<b>0.02</b>
Vitamin A (IU)	1200	2700	<b>0.03</b>
Vitamin C (mg)	140	380	<b>&lt;0.01</b>
Vitamin D (IU)	77	166	<b>0.02</b>
Vitamin E (a-TE)	46	157	<b>&lt;0.01</b>
<i>Heterocyclic amines</i>			
Total (ng/day)	190	128	0.1
MelQx (ng/day)	47	25	<b>0.04</b>
PhIP (ng/day)	126	78	0.07
Dimelqx (ng/day)	2.8	2.1	0.2
Bap (ng/day)	14	22	0.1

PhIP is 2-amino-1-methyl-6-phenyl-imidazo[4,5-b]pyridine, MelQx is 2-amino-3,8-dimethylimidazo[4,5-f]quinoxaline, Dimelqx is 2-amino-3,4,8-trimethylimidazo[4,5-f]quinoxaline Bap is benzo[a]pyrene.



**Figure 1**  
**DNA damage and viability of HT 29 cells after incubation with FW.** AAs (n = 21), CAs (n = 22), males and females. NaCl -- negative control; H<sub>2</sub>O<sub>2</sub> -- positive control.

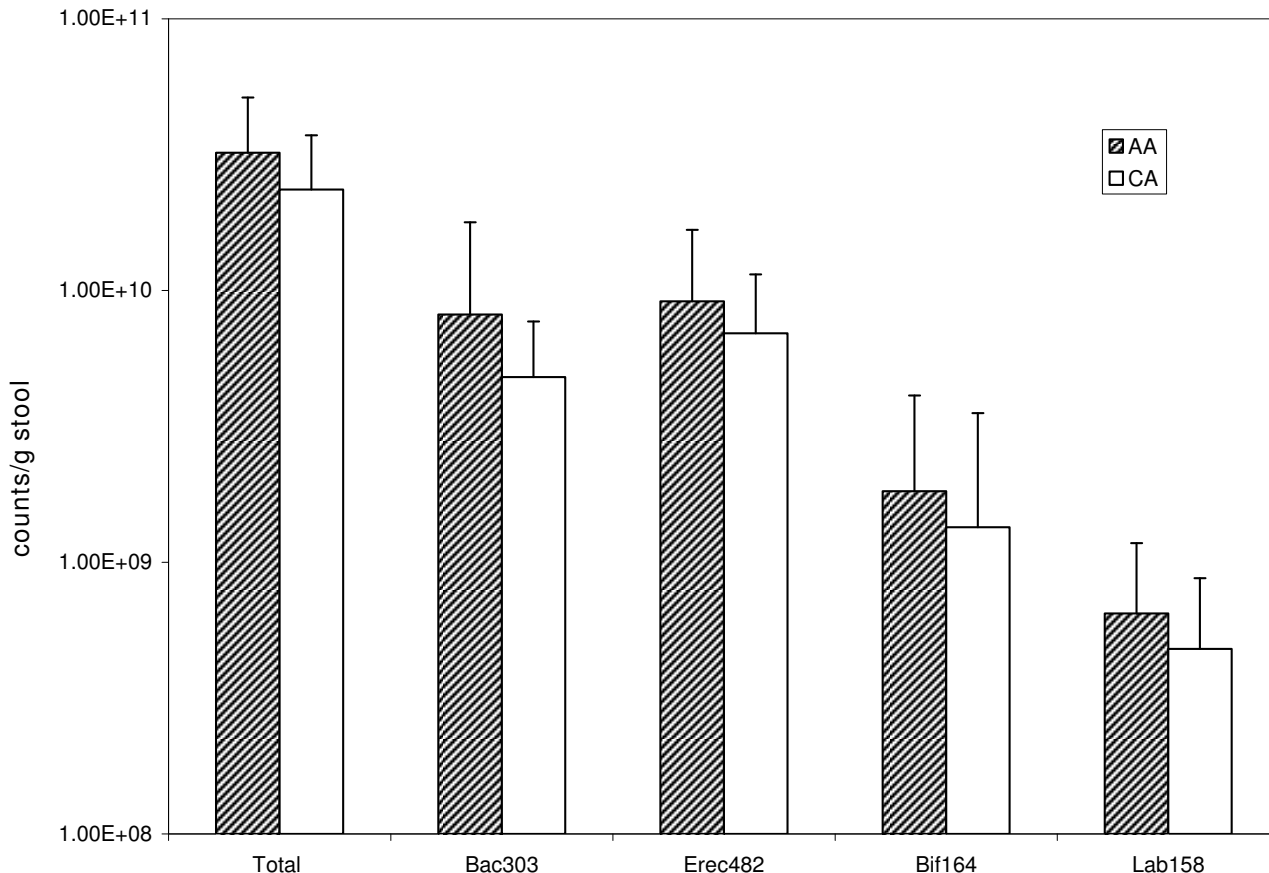
33 subjects. Although H<sub>2</sub>O<sub>2</sub> clearly induced DNA breaks preincubation of the HT29 cells with fecal waters did not affect the degree of DNA damage (data not shown).

#### Microbiota analysis

We first analyzed overall microbiota composition by qualitative DGGE profiling, an efficient but crude method for assessing microbiota diversity (a measure of species richness and their distribution). We did not detect a difference in overall diversity with any of our measured variables (data not shown). Based on DGGE profiles, the mean Shannon-Wiener diversity index in all samples, a measure of overall microbiota diversity, was 2.3 with a SD of 0.2 and a range between 2.0 and 2.7. In contrast, quantitative microbiota analysis by FISH revealed some differences between the two racial groups. The total number of bacteria/g of stool was higher in AA when compared to CA (Figure 2). These differences, although statistically significant on the decimal scale, were not significant after log transformation. Although total number of Bacteroidetes that hybridized to our probe were increased in AA (Figure 2) the proportions of Bacteroidetes or Clostridia cluster XIVa (Firmicutes) that were targeted with the respective probes did not differ between AA and CA. We detected suggestive associations between dietary intake and quantities of bacterial groups. Subjects that consumed high amounts of

calories from fat harbored fewer Clostridia. Consumption of dietary fiber was positively associated with numbers of LAB, which are thought to be beneficial to health. Grain fiber and fiber from fruits and veggies but not fiber from beans appeared associated with LAB (data not shown). Subjects with higher intake of HCAs had higher amounts of Clostridia cluster XIVa. All of these potential associations between exposure of interest and microbiota reached statistical significance ( $p < 0.05$ ) only in the initial analyses of raw data, however, after log transformation of bacterial counts to achieve a more normal distribution none of the associations remained significant.

When we analyzed the proportions of Bacteroidetes and Clostridia cluster XIVa (Firmicutes) in all 14 lean study subjects (BMI<25) compared to 14 matched obese subjects (BMI>30), we failed to detect an association with BMI by either FISH (Figure 3a). The apparent lack of associations between obesity and the proportions of Bacteroidetes and Clostridia cluster XIVa in our study population was confirmed using a second quantitative approach, qPCR (Figure 3b).



**Figure 2**  
**Comparison of microbiota between AA and CA.** Fixed stool samples were hybridized with probes directed against Bacteroidetes (Bac 303), Clostridium Cluster XIVa (Erec482), Bifidobacteria (Bif164) and Lactic Acid bacteria (Lab158) and enumerated by FISH as described in Materials and Methods. Total bacterial counts were determined using DAPI.

**Discussion**

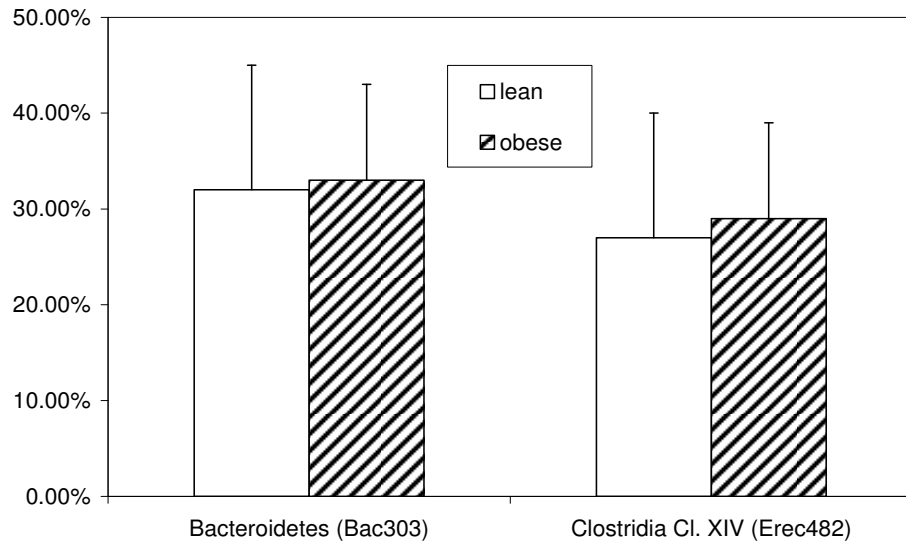
Our analysis of differences in dietary habits between AA and CA is consistent with previous reports that suggested an increased intake of HCAs and a decreased intake of micronutrients in AA [4-6]. Although our study was limited in size, the agreement of two independent dietary assessment methods (FFQ and food record) increases confidence in our observation. As both HCA intake and vitamin D levels have been associated with carcinogenesis [7,43] there appears to be an opportunity for dietary prevention to reduce the burden of cancer in AA.

Exposure of HT29 cells to FW from subjects in this study did induce DNA damage. However, although the two groups differed in various exposures, including BMI and dietary habits, we did not detect significant differences in responses to FW from the two groups. Our study was limited in size and measurement of cytotoxicity and genoto-

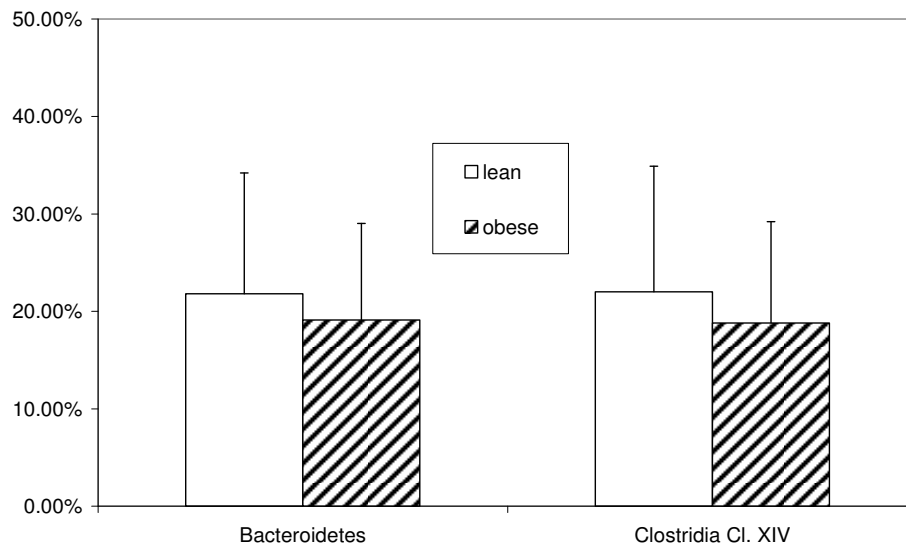
xicity included a large degree of variation. The observation that FW from females appear to exhibit higher genotoxicity is not consistent with the hypothesis that FW genotoxicity is associated with CRC risk, as US females have lower CRC rates than males. Although we used twice as much fecal water (20%) compared to earlier studies [27,29], we observed only a weak increase in measurable DNA breaks. Future studies of associations between environmental factors and FW genotoxicity should be designed in larger human cohorts preferably with controlled exposures to reduce variation.

The observation that total bacterial counts/g of stool and numbers of Bacteroides counts were increased in AA is suggestive rather than confirmatory. Soft large stools of rural Africans have been considered as representing low colorectal cancer risk in early observations of the effects of dietary fiber intake [44]. A higher water content of stools

a)



b)



**Figure 3**  
Proportions of bacteroidetes and Clostridia Cluster XIVa in obese vs. lean subjects as determined by a) FISH and b) qPCR analysis.



would reduce bacterial densities and thus harder stools might contain larger densities of bacteria. We collected only one spot stool sample from each subject and variation in microbiota composition over time appears significant [45,46]. The same qualifications need to be made when interpreting our findings that intake of fiber, HCA and calories from fat affected microbiota composition. Although we have shown earlier that dietary interventions in mice as well as in humans can affect microbiota composition [45,47], similar data from observational studies is sparse [3]. There has been significant recent interest in potential associations between gut microbiota and obesity, specifically a decrease proportion of bacteria belonging to the Bacteroidetes among obese [15,48-50]. Our data does not support that hypothesis as AA in our study had a higher BMI that correlated with higher, not lower, numbers of Bacteroidetes. A detailed quantitative study in a subset of lean and obese subjects from this study also failed to detect such an association. We used a different methodology (FISH and qPCR) compared to the at best semi-quantitative 16S rRNA based analysis frequently used by other groups. Our probes and primers admittedly do not cover Bacteroidetes species perfectly and due to differences in methodology results can't be compared directly to 16S rRNA based studies. However, recent work from other groups also appears inconsistent with a proposed association between lower proportions of Bacteroidetes and obesity [17,51]. The ongoing Human Microbiota Roadmap Project is aimed at improving our understanding of normal microbiota composition and its potential associations with health and disease <http://nihroadmap.nih.gov/hmp/>. Our observations are consistent with the hypothesis that diet mediated differences in gut microbiota contribute to the observed increased risk of colorectal cancer in AA. Because diseases such as CRC can change the intestinal environment with likely impacts on microbiota composition, future studies with prospectively collected stool samples will be required to link microbiota composition with disease risk.

### Competing interests

The authors declare that they have no competing interests.

### Authors' contributions

VM designed the study, helped with study logistics, analyzed the data and wrote the manuscript. QM enrolled subjects, collected samples and performed the microbiota analyses. RS helped with the design of the dietary assessment and contributed to the HCA analysis. MG helped with the study design, supervised the mutagenicity studies and wrote respective parts of the manuscript. All authors read and approved the final manuscript.

### Acknowledgements

This work was supported by a pilot grant from the Maryland Special Population Network. Work in the lab of Dr. Mai is supported by ACS grant

MRSCT CCE-107301. We thank B.L. Zobel (deceased 2008) for discussion regarding study design and interpretation of the findings. We thank Dr. C. Boushey for help with the food record data.

### References

1. Branca F, Hanley AB, Pool-Zobel BL, Verhagen H: **Biomarkers in Disease and Health.** *Br J Nutr* 2001, **86**:S55-S92.
2. World Cancer Research Fund: **Food, Nutrition, and the Prevention of Cancer: A Global Perspective.** American Institute for Cancer Research, Washington, D C 2007.
3. Mai V: **Dietary modification of the intestinal microbiota.** *Nutr Rev* 2004, **62**:235-242.
4. Satia-Abouta J, Galanko JA, Martin CF, Potter JD, Ammerman A, Sandler RS: **Associations of micronutrients with colon cancer risk in African Americans and whites: results from the North Carolina Colon Cancer Study.** *Cancer Epidemiol Biomarkers Prev* 2003, **12**:747-754.
5. Satia-Abouta J, Galanko JA, Potter JD, Ammerman A, Martin CF, Sandler RS: **Associations of total energy and macronutrients with colon cancer risk in African Americans and Whites: results from the North Carolina colon cancer study.** *Am J Epidemiol* 2003, **158**:951-962.
6. Satia-Abouta J, Galanko JA, Martin CF, Ammerman A, Sandler RS: **Food groups and colon cancer risk in African-Americans and Caucasians.** *Int J Cancer* 2004, **109**:728-736.
7. Butler LM, Sinha R, Millikan RC, Martin CF, Newman B, Gammon MD, Ammerman AS, Sandler RS: **Heterocyclic amines, meat intake, and association with colon cancer in a population-based study.** *Am J Epidemiol* 2003, **157**:434-445.
8. Zoetendal EG, Vaughan EE, De Vos WM: **A microbial world within us.** *Mol Microbiol* 2006, **59**:1639-1650.
9. Mai V, Stine OC, Morris JG Jr: **Timing in collection of stool samples.** *Science* 2005, **310**:1118.
10. Mai V, Draganov PV: **Recent advances and remaining gaps in our knowledge of associations between gut microbiota and human health.** *World J Gastroenterol* 2009, **15**:81-85.
11. Eckburg PB, Bik EM, Bernstein CN, Purdom E, Dethlefsen L, Sargent M, Gill SR, Nelson KE, Relman DA: **Diversity of the human intestinal microbial flora.** *Science* 2005, **308**:1635-1638.
12. Gill SR, Pop M, Deboy RT, Eckburg PB, Turnbaugh PJ, Samuel BS, Gordon JL, Relman DA, Fraser-Liggett CM, Nelson KE: **Metagenomic analysis of the human distal gut microbiome.** *Science* 2006, **312**:1355-1359.
13. Hooper LV, Wong MH, Thelin A, Hansson L, Falk PG, Gordon JL: **Molecular analysis of commensal host-microbial relationships in the intestine.** *Science* 2001, **291**:881-884.
14. Huurre A, Kalliomaki M, Rautava S, Rinne M, Salminen S, Isolauri E: **Mode of Delivery - Effects on Gut Microbiota and Humoral Immunity.** *Neonatology* 2007, **93**:236-240.
15. Ley RE, Backhed F, Turnbaugh P, Lozupone CA, Knight RD, Gordon JL: **Obesity alters gut microbial ecology.** *Proc Natl Acad Sci USA* 2005, **102**:11070-11075.
16. Backhed F, Manchester JK, Semenkovich CF, Gordon JL: **Mechanisms underlying the resistance to diet-induced obesity in germ-free mice.** *Proc Natl Acad Sci USA* 2007, **104**:979-984.
17. Zhang H, Dibaise JK, Zuccolo A, Kudrna D, Braidotti M, Yu Y, Parameswaran P, Crowell MD, Wing R, Rittmann BE, et al.: **Human gut microbiota in obesity and after gastric bypass.** *Proc Natl Acad Sci USA* 2009, **106**:2365-2370.
18. Guarner F, Malagelada JR: **Gut flora in health and disease.** *Lancet* 2003, **361**:512-519.
19. Marchesi J, Shanahan F: **The normal intestinal microbiota.** *Curr Opin Infect Dis* 2007, **20**:508-513.
20. Manichan C, Rigottier-Gois L, Bonnaud E, Gloux K, Pelletier E, Frangeul L, Nalin R, Jarrin C, Chardon P, Marteau P, et al.: **Reduced diversity of faecal microbiota in Crohn's disease revealed by a metagenomic approach.** *Gut* 2006, **55**:205-211.
21. DeKok TMCM, van Maanen JMS: **Evaluation of fecal mutagenicity and colorectal cancer risk.** *Mutation Res* 2000, **463**:53-101.
22. Rafter J, Chin SM, Andersson AM, Alder R, Eng VW, Bruce R: **Cellular toxicity of faecal water depends on diet.** *Am J Clin Nutr* 1987, **45**:559-563.
23. Glinghamer B, Venturi M, Rowland IR, Rafter J: **Shift from a dairy product-rich to a dairy product-free diet: influence on cyto-**

- toxicity and genotoxicity of fecal water - potential risk factors for colon cancer.** *Am J Clin Nutr* 1997, **66**:1277-1282.
24. Klinder A, Karlsson PC, Clune Y, Hughes R, Gleib M, Raftar JJ, Rowland I, Collins JK, Pool-Zobel BL: **Fecal water as a non-invasive biomarker in nutritional intervention: comparison of preparation methods and refinement of different endpoints.** *Nutr Cancer* 2007, **57**:158-167.
  25. Collins AR: **The comet assay for DNA damage and repair: principles, applications, and limitations.** *Mol Biotechnol* 2004, **26**:249-261.
  26. Klinder A, Forster A, Caderni G, Femia AP, Pool-Zobel BL: **Fecal water genotoxicity is predictive of tumor-preventive activities by inulin-like oligofructoses, probiotics (Lactobacillus rhamnosus and Bifidobacterium lactis), and their synbiotic combination.** *Nutr Cancer* 2004, **49**:144-155.
  27. Rieger MA, Parlesak A, Pool-Zobel BL, Rechkemmer G, Bode C: **Diets high in fat and meat, but low in fiber increase the genotoxic potential of fecal water.** *Carcinogenesis* 1999, **20**:2317-2326.
  28. Oberreuther-Moschner DL, Jahreis G, Rechkemmer G, Pool-Zobel BL: **Dietary intervention with the probiotics Lactobacillus acidophilus 145 and Bifidobacterium longum 913 modulates the potential of human faecal water to induce damage in HT29clone19A cells.** *Br J Nutr* 2004, **91**:925-932.
  29. Gleib M, Habermann N, Osswald K, Seidel C, Persin C, Jahreis G, Pool-Zobel BL: **Assessment of DNA damage and its modulation by dietary and genetic factors in smokers using the Comet assay: a biomarker model.** *Biomarkers* 2005, **10**:203-217.
  30. Subar AF, Thompson FE, Kipnis V, Midthune D, Hurwitz P, McNutt S, McIntosh A, Rosenfeld S: **Comparative validation of the Block, Willett, and National Cancer Institute food frequency questionnaires: the Eating at America's Table Study.** *Am J Epidemiol* 2001, **154**:1089-1099.
  31. Cantwell M, Mittl B, Curtin J, Carroll R, Potischman N, Caporaso N, Sinha R: **Relative validity of a food frequency questionnaire with a meat-cooking and heterocyclic amine module.** *Cancer Epidemiol Biomarkers Prev* 2004, **13**:293-298.
  32. Zoetendal EG, Akkermans AD, De Vos WM: **Temperature gradient gel electrophoresis analysis of 16S rRNA from human fecal samples reveals stable and host-specific communities of active bacteria.** *Appl Environ Microbiol* 1998, **64**:3854-3859.
  33. Franks AH, Harmsen HJ, Raangs GC, Jansen GJ, Schut F, Welling GW: **Variations of bacterial populations in human feces measured by fluorescent in situ hybridization with group-specific 16S rRNA-targeted oligonucleotide probes.** *Appl Environ Microbiol* 1998, **64**:3336-3345.
  34. Harmsen HJ, Wildeboer-Veloo AC, Grijpstra J, Knol J, Degener JE, Welling GW: **Development of 16S rRNA-based probes for the Coriobacterium group and the Atopobium cluster and their application for enumeration of Coriobacteriaceae in human feces from volunteers of different age groups.** *Appl Environ Microbiol* 2000, **66**:4523-4527.
  35. Harmsen HJ, Raangs GC, He T, Degener JE, Welling GW: **Extensive set of 16S rRNA-based probes for detection of bacteria in human feces.** *Appl Environ Microbiol* 2002, **68**:2982-2990.
  36. Manz W, Amann R, Ludwig W, Vancanneyt M, Schleifer KH: **Application of a suite of 16S rRNA-specific oligonucleotide probes designed to investigate bacteria of the phylum cytophaga-flavobacter-bacteroides in the natural environment.** *Microbiology* 1996, **142**:1097-1106.
  37. Langendijk PS, Schut F, Jansen GJ, Raangs GC, Kamphuis GR, Wilkinson MH, Welling GW: **Quantitative fluorescence in situ hybridization of Bifidobacterium spp. with genus-specific 16S rRNA-targeted probes and its application in fecal samples.** *Appl Environ Microbiol* 1995, **61**:3069-3075.
  38. Harmsen HJM, Elferich P, Schut F, Welling GW: **A 16S rRNA-targeted probe for detection of Lactobacilli and Enterococci in faecal samples by fluorescent in situ hybridization.** *Microbial Ecology in Health and Disease* 1999, **11**:3-12.
  39. Rinttila T, Kassinen A, Malinen E, Krogus L, Palva A: **Development of an extensive set of 16S rDNA-targeted primers for quantification of pathogenic and indigenous bacteria in faecal samples by real-time PCR.** *J Appl Microbiol* 2004, **97**:1166-1177.
  40. Rousset M: **The human colon carcinoma cell lines HT-29 and Caco-2: two in vitro models for the study of intestinal differentiation.** *Biochimie* 1986, **68**:1035-1040.
  41. Singh NP, McCoy MT, Tice RR, Schneider EL: **A simple technique for quantitation of low levels of DNA damage in individual cells.** *Exp Cell Res* 1988, **175**:184-191.
  42. Gleib M, Kirmse A, Habermann N, Persin C, Pool-Zobel BL: **Bread enriched with green coffee extract has chemoprotective and antigenotoxic activities in human cells.** *Nutr Cancer* 2006, **56**:182-192.
  43. Giovannucci E: **Vitamin D and cancer incidence in the Harvard cohorts.** *Ann Epidemiol* 2009, **19**:84-88.
  44. Burkitt DP: **Epidemiology of cancer of the colon and rectum.** *Cancer* 1971, **28**:3-13.
  45. Mai V, Katki HA, Harmsen H, Gallaher D, Schatzkin A, Baer DJ, Clevence B: **Effects of a controlled diet and black tea drinking on the fecal microflora composition and the fecal bile acid profile of human volunteers in a double-blinded randomized feeding study.** *J Nutr* 2004, **134**:473-478.
  46. Dethlefsen L, Huse S, Sogin ML, Relman DA: **The pervasive effects of an antibiotic on the human gut microbiota, as revealed by deep 16S rRNA sequencing.** *PLoS Biol* 2008, **6**:e280.
  47. Mai V, Colbert LH, Perkins SN, Schatzkin A, Hursting SD: **Intestinal microbiota: a potential diet-responsive prevention target in ApcMin mice.** *Mol Carcinog* 2007, **46**:42-48.
  48. Backhed F, Ding H, Wang T, Hooper LV, Koh GY, Semenkovich CF, Gordon JI: **The gut microbiota as an environmental factor that regulates fat storage.** *Proc Natl Acad Sci USA* 2004, **101**:15718-15723.
  49. Turnbaugh PJ, Ley RE, Mahowald MA, Magrini V, Mardis ER, Gordon JI: **An obesity-associated gut microbiome with increased capacity for energy harvest.** *Nature* 2006, **444**:1027-1031.
  50. Ley RE, Turnbaugh PJ, Klein S, Gordon JI: **Microbial ecology: human gut microbes associated with obesity.** *Nature* 2006, **444**:1022-1023.
  51. Duncan SH, Lobleby GE, Holtrop G, Ince J, Johnstone AM, Louis P, Flint HJ: **Human colonic microbiota associated with diet, obesity and weight loss.** *Int J Obes (Lond)* 2008, **32**:1720-1724.

Publish with **BioMed Central** and every scientist can read your work free of charge

"BioMed Central will be the most significant development for disseminating the results of biomedical research in our lifetime."

Sir Paul Nurse, Cancer Research UK

Your research papers will be:

- available free of charge to the entire biomedical community
- peer reviewed and published immediately upon acceptance
- cited in PubMed and archived on PubMed Central
- yours — you keep the copyright

Submit your manuscript here:  
[http://www.biomedcentral.com/info/publishing\\_adv.asp](http://www.biomedcentral.com/info/publishing_adv.asp)

