

Recruitment of functionally distinct membrane proteins to chromatin mediates nuclear envelope formation *in vivo*

Daniel J. Anderson, Jesse D. Vargas, Joshua P. Hsiao, and Martin W. Hetzer

Vol. 186 No. 2, July 27, 2009. Pages 183–191.

The top row of Fig. 4 C was labeled incorrectly, and should appear as “Control”.

The far right column of Fig. S2 B was labeled incorrectly, and should appear as “LMN + TM”.

Corrected images appear below.

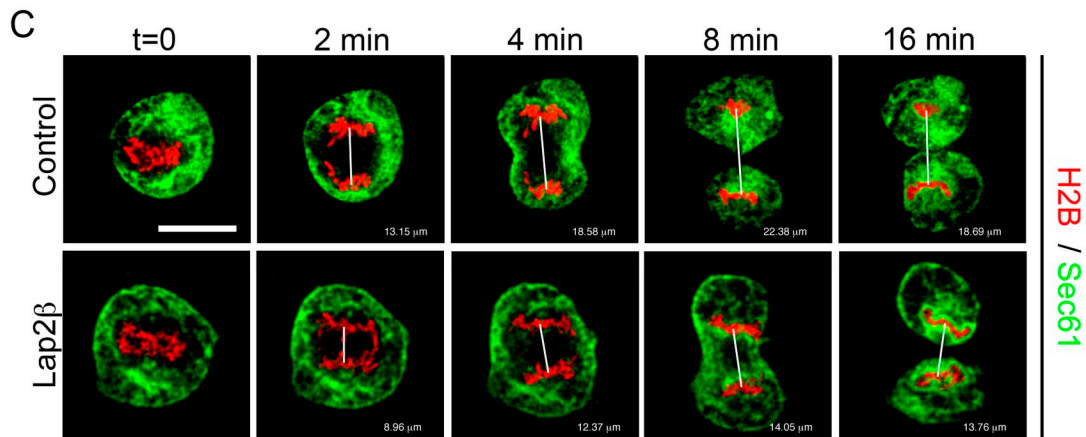


Figure 4. (C) Representative images of U2OS cells with Sec61-GFP (green) and H2B-tdTomato (red) compares control cells with cells in which NE formation was accelerated by overexpression of Lap2β, and the distance between chromosome clusters was measured. $t = 0$ is set at anaphase onset. White lines indicate distances measured in Photoshop extended. Bar, 20 μm.

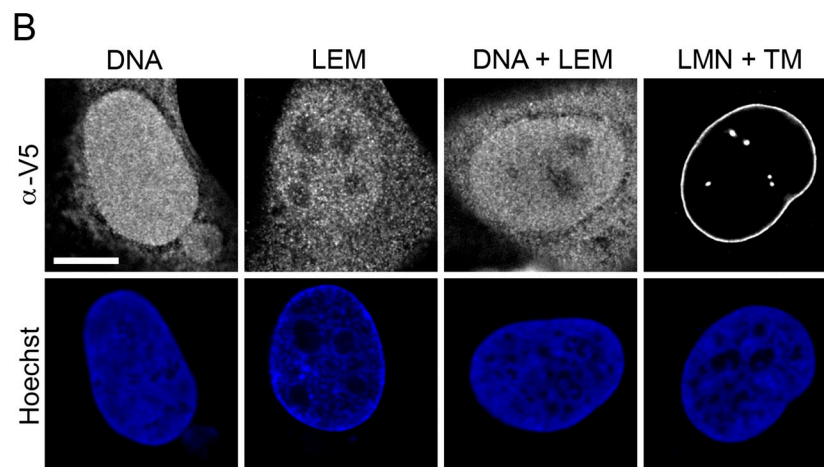


Figure S2. (B) Localization of V5-tagged fragments of Lap2β was characterized by immunofluorescence. Bar, 20 μm.