

One new species and three new records of *Chrysis* Linnaeus from China (Hymenoptera, Chrysididae)

Paolo Rosa¹, Na-sen Wei², Zai-fu Xu²

1 Via Belvedere 8/d, I-20881 Bernareggio (MB), Italy **2** Department of Entomology, College of Agriculture, South China Agricultural University, Guangzhou 510640, China

Corresponding author: Zai-fu Xu (xuzhaifu@scau.edu.cn)

Academic editor: M. Oehl | Received 24 February 2017 | Accepted 29 March 2017 | Published 21 April 2017

<http://zoobank.org/30DD0C5B-6A72-494B-834F-ECF3544DE8BC>

Citation: Rosa P, Wei N-s, Xu Z-f (2017) One new species and three new records of *Chrysis* Linnaeus from China (Hymenoptera, Chrysididae). ZooKeys 669: 65–88. <https://doi.org/10.3897/zookeys.669.12398>

Abstract

Four Chinese *Chrysis* species-groups, the *antennata*, *capitalis*, *elegans*, and *maculicornis* species-groups, are discussed. *Chrysis lapislazulina* Rosa & Xu, **sp. n.** is described in the *elegans* species-group; and three species, *C. brachyceras* Bischoff, 1910, *C. subdistincta* Linsenmaier, 1968 and *C. yoshikawai* Tsuneki, 1961, are reported for the first time from China in other species-groups. A new synonymy is proposed for *C. ignifascia* Mocsáry, 1893 = *C. taiwana* Tsuneki, 1970, **syn. n.** A short historical review of the *elegans* species-group is provided. *C. goetheana* Semenov, 1967 is transferred from the *elegans* species-group to the *maculicornis* species-group. *C. mesochlora* Mocsáry, 1893 is considered a *nomen dubium*.

Keywords

Chrysis, *antennata* species-group, *capitalis* species-group, *elegans* species-group, *maculicornis* species-group, new species, new records, China

Introduction

Kimsey and Bohart (1991) provided keys and detailed diagnoses for the identification of *Chrysis* species-groups from all zoogeographical regions. Their classification and characterization of species-groups is adopted here with few exceptions (Rosa et al. 2014). However, some species-groups are currently under investigation; in particular, the *antennata* species-

group which is more closely related to the genus *Praestochrysis* Linsenmaier, 1959 than to the genus *Chrysis*.

At present, there are 79 known species of Chinese *Chrysis* (Rosa et al. 2014, 2016a); but this genus needs to be more intensively investigated (Rosa et al. 2016a). Many Chinese chrysidid specimens have been collected over the last twenty years and some of the main findings have been published (Rosa et al. 2015a, 2015b, 2016a). In the present paper four *Chrysis* species-groups are discussed, namely the *antennata*, *capitalis*, *elegans*, and *maculicornis* species-groups. A new species is also described, *C. lapislazulina* sp. n. belonging to the *elegans* species-group, and three new records from China are reported: *C. brachyceras* Bischoff, 1910 in the *antennata* species-group, *C. yoshikawai* Tsuneki, 1961 in the *capitalis* species-group, and *C. subdistincta* Linsenmaier, 1968 in the *maculicornis* species-group.

Materials and methods

All specimens were examined using a Leica MZ125 stereomicroscope. Photographs of specimens from South China Agricultural University (SCAU) were taken by a digital camera (CoolSNAP) mounted to a Zeiss Stemi 2000-CS stereomicroscope. All images were processed using Image-Pro Plus software. Photographs of the holotype of *C. taiwana* were taken with a Keyence microscope. Photographs of types from other museums were taken by a Nikon D-80 mounted on a Togonal SCZ stereomicroscope and stacked through the software Combine ZP.

Terminology mostly follows Kimsey and Bohart (1991). Abbreviations used in the descriptions are as follows:

BOL	the shortest distance between mid-ocellus and transverse frontal carina (TFC);
F1, F2, F3 , etc.	flagellomeres 1, 2, 3, etc.;
l/w	length/width ratio;
MOD	mid ocellus diameter;
MS	malar space, the shortest distance between base of mandible and lower margin of compound eye;
OOL	the shortest distance between posterior ocellus and compound eye;
P	pedicel;
PD	puncture diameter;
POL	the shortest distance between posterior ocelli;
S2	metasomal sternite 2;
T1, T2, T3	metasomal tergites 1, 2, 3;
TFC	transverse frontal carina.

Types and other specimens have been examined from the following institutions:

HNHM Hungarian Natural History Museum, Budapest, Hungary;

MNHU	Museum of Natural History of the Humboldt-Universität, Berlin, Germany;
MSNG	Museum of Natural History “G. Doria”, Genoa, Italy;
NMLS	Natur Museum Luzern, Switzerland;
OMNH	Osaka Museum of Natural History, Osaka, Japan;
SCAU	Hymenopteran Collection, South China Agricultural University, Guangzhou, China;
SHEM	Shanghai Entomological Museum, Chinese Academy of Sciences, Shanghai, China;
ZISP	Zoological Institute, St. Petersburg, Russia;
ZMUC	Zoological Museum, University of Copenhagen, Denmark.

Taxonomy

Chrysis antennata species-group

Chrysis antennata species-group: Kimsey and Bohart 1991: 328 (key), 323 (fig. 105d), 336 (fig. 109q), 337 (diagnosis), 350 (fig. 112d).

Diagnosis. The *antennata* species-group is characterised by broadened antennae, short and broad face, toothed metanotum, and similar habitus to *Praestochrysis* Linsenmaier except for four teeth on T3 (Kimsey and Bohart 1991).

Description. Male F1 l/w = 1.2; female F1 l/w = 1.5. Flagellomeres broadened, with F4 broader than long. TFC almost straight, slightly downcurved laterally, Mid ocellus lidded. Male MS = 1.5 MOD; female MS = 1.8–2.2 MOD. Metanotum with small, stout, postero-median tooth. T3 short, weakly saddled in female, with weak transversal prepit bulge; pit row deep; lateral margins simple; apex with four short apical teeth. Black spots on S2 round and well separated in *C. antennata*, triangular and almost fused in *C. brachyceras*.

Biology. Unknown.

Species included. Two species: *Chrysis antennata* Mocsáry, 1912 from Afrotropical Region (Mocsáry 1912a), and *C. brachyceras* Bischoff, 1910 from Oriental Region.

Distribution. Afrotropical and Oriental regions.

Chrysis brachyceras Bischoff, 1910

Fig. 1

Chrysis (Tetrachrysis) brachyceras Bischoff, 1910: 474. Holotype, ♀; Malaysia (MNHU) (examined).

Chrysis (Tetrachrysis) brachyceras: Bischoff 1913: 48 (Malaysia).

Chrysis brachyceras: Kimsey and Bohart 1991: 337 (Malaysia, Laos), 390 (Malaysia).

Type material. Holotype, ♀, MALAYSIA, Malacca (MNHU). **Additional material:** 5♀♀, CHINA, Guangxi, Maershan National Nature Reserve, 3.VIII.2005, leg. Liu-sheng Chen, ANT001–ANT005 (SCAU); 2♀♀, CHINA, Guizhou, Tianzhu, VIII.2009, leg. Yang-wen Wang, ANT006, ANT007 (SCAU).

Diagnosis. *Chrysis brachyceras* is a large species, with the following distinctive characteristics: flagellomeres broad and flat; metanotum with small and stout postero-medial tooth; T3 with four short apical teeth.

Description. *Female.* Body length 10.0–11.0 mm.

Head. Scapal basin fully punctate. TFC medially straight, slightly downcurved at both ends and with two weak branches extending upwards (Fig. 1B). Relative length of P:F1:F2:F3 = 1.0:2.3:0.9:0.9. OOL = 1.5 MOD; BOL = 1.0 MOD; POL = 1.5 MOD; MS = 1.8 MOD; subantennal space 1.0 MOD. Anterior margin of clypeus emarginate. F3–F11 broadened and flattened. Genal carina sharp all over its length (Fig. 1D).

Mesosoma. Pronotal groove deep and almost reaching posterior margin; sublateral carina distinct and complete (Figs 1A, 1D); pronotal side with depression. Mesoscutum evenly punctate (Fig. 1C). Mesoscutellum simple, without anterior depression or fovea. Metanotum with a small, stout tooth pointing upwards (Figs 1A, 1C). Mesopleuron with broad episternal and scrobal sulci; the latter similar to elongate foveae (Fig. 1D).

Metasoma. Metasoma evenly punctate; the punctures as large as on mesoscutum. T2 and T3 without median ridge; T3 weakly saddled in female, with weak transversal prepit bulge over deep pit row; T3 with four apical teeth and simple lateral margins (Figs 1A, 1E). Black spots on S2 triangular, almost fused along the midline (Fig. 1F).

Colouration. Body blue, with dark blue to green metallic reflections, dark blue on ocellar area, mesoscutum medially, T1 medially, T2 and T3 antero-laterally.

Male. Not available for this study.

Distribution. China (new record). Malaysia and Laos (Bischoff 1913; Kimsey and Bohart 1991, not Indonesia).

Remarks. Kimsey and Bohart (1991) noticed some similarities between the species of the *antennata* species-group and those of the genus *Praestochrysis* Linsenmaier, 1959. The former ones are included in the genus *Chrysis* because of the four apical teeth on T3. Nevertheless, *C. brachyceras* shares with *Praestochrysis* the following characteristics: general habitus, shape of head distinctly broader than high, broadened flagellomeres, subantennal space 1.0 MOD and shorter than MS, TFC weakly indicated across strongly developed brow, scapal basin not microridged, pronotum with deep lateral depressions, metanotum with a short, stout tooth, scrobal and episternal sulci well developed and expanded ventrally, black spots on S2 small and almost fused along the midline. Several of above features (excluding broadened flagellomeres, weak TFC, metanotum with a small tooth) and pronotal sublateral carina distinct and complete are shared with the *T. lusca* species-group, which was considered belonging to the genus *Praestochrysis* by Kimsey and Bohart (1991) and *Trichrysis* by Linsenmaier (1994), Madl and Rosa (2012) and Rosa et al. (2014, 2016b). *Trichrysis lusca* is considered as

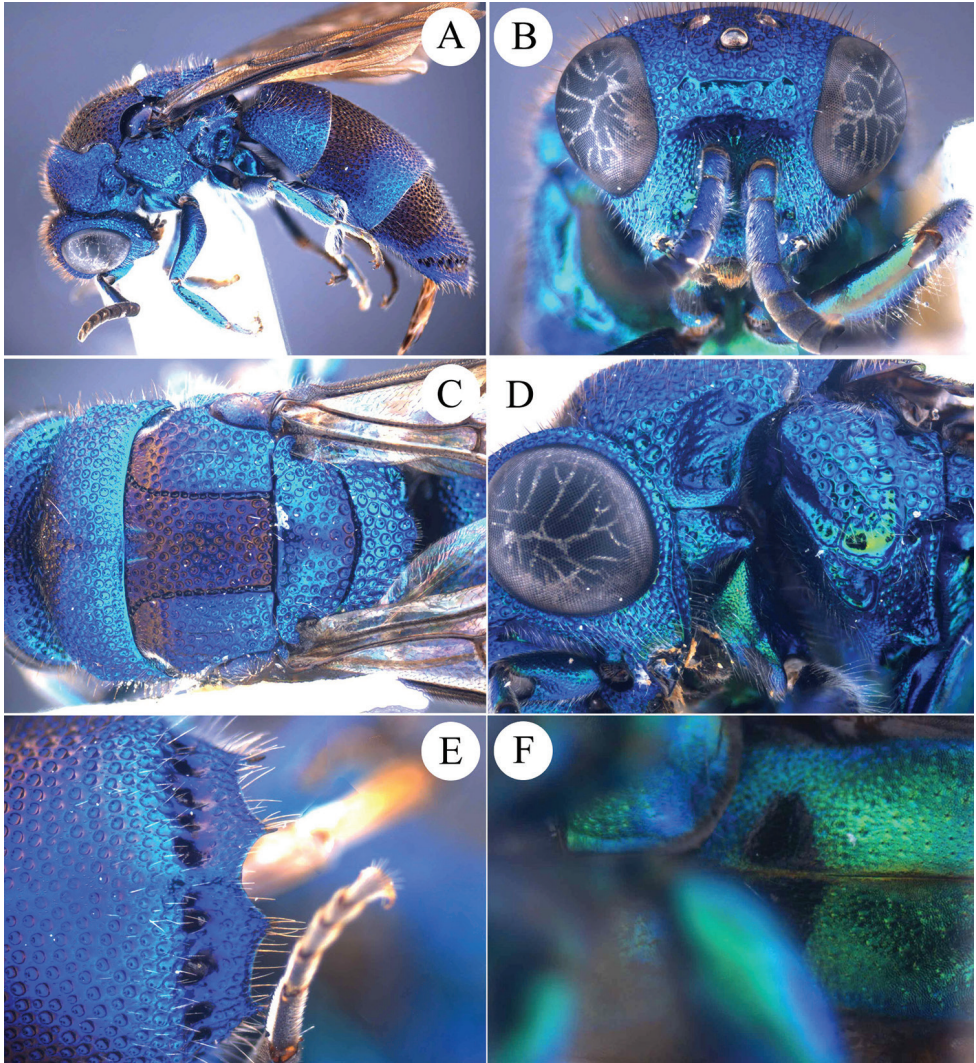


Figure 1. *Chrysis brachyceras* Bischoff, 1910, ♀ from Guangxi. **A** Habitus, lateral view **B** head, frontal view **C** mesosoma, dorsal view **D** head, pronotum and mesopleuron, lateral view **E** apex of T3, dorsal view **F** black spots on S2, ventral view.

belonging to *Trichrysis* not only morphologically but also biologically. *Praestochrysis* are well known parasitoids of moth prepupae (Limacodidae) (Kimsey and Bohart 1991), whereas species in the *T. lusca* species-group are parasitoids of Sphecidae (Mocsáry 1889, 1912b; Tsuneki 1955; Linsenmaier 1959) or Eumeninae (Vespidae) (Kimsey and Bohart 1991). Unfortunately, the biology of *C. brachyceras* is unknown; therefore, we consider *C. brachyceras* as a member of the genus *Chrysis* until new biological or molecular evidence is available.

Chrysis capitalis species-group

Chrysis capitalis species-group: Kimsey and Bohart 1991: 325 (key), 329 (fig. 107p), 336 (fig. 110m), 339 (diagnosis), 350 (fig. 112j).

Diagnosis. The *capitalis* species-group is characterised by apex of T3 simple, TFC prominent and M-shaped, and mid ocellus lidded. Some species in the *capitalis* species-group are also easily recognised by female metasoma usually blue to green with golden stripes (e.g. *C. abuensis* Nurse, 1902, *C. bayadera* du Buysson, 1896, *C. ignifascia* Mocsáry, 1893, and *C. jalala* Nurse, 1902).

Description. Scapal basin microridged medially. Male F1 l/w = 1.5; female F1 l/w = 1.9–3.0. TFC usually well developed and M-shaped. Mid ocellus lidded. MS usually < 1.0 MOD. T2 with median ridge. T3 weakly saddled in female; pit row moderately impressed; apex of T3 convex or slightly concave medially, without apical teeth.

Biology. Unknown.

Species included. Fourteen species: seven Afrotropical, *Chrysis capitalis* Dahlbom, 1854, *C. dalmanni* Dahlbom, 1845, *C. infuscata* Brullé, 1846, *C. jugum* Dahlbom, 1850, *C. levioris* Edney, 1952, *C. rutilata* du Buysson, 1898b, and *C. sinuosa* Dahlbom, 1845 (Rosa and Vårdal 2015); six Oriental, *C. abuensis* Nurse, *C. bayadera* du Buysson, *C. ignifascia* Mocsáry, 1893 (= *C. taiwana* Tsuneki, 1970, syn. n.), *C. sumptuosa* Smith, 1858, *C. wroughtoni* du Buysson, 1896, and *C. yoshikawai* Tsuneki, 1961; and one Palearctic species, *C. jalala* Nurse.

Distribution. Afrotropical, Oriental and Palearctic regions.

Remarks. *Chrysis arabica* Mocsáry, 1911 was moved to the newly created *C. arabica* species-group by Linsenmaier (1994).

Key to Chinese species of the *capitalis* species-group

- 1 T2 with a broad transverse posterior reddish golden stripe, contrasting with the remaining body colouration (Figs 2E, 2F)..... *C. ignifascia* Mocsáry (♀)
- T2 blue to green without reddish or golden stripe (Figs 3, 6)..... 2
- 2 Female and male with sub-reniform and transverse black spots on S2 (Fig. 7B) *C. yoshikawai* Tsuneki
- Male with sub-triangular and longitudinal black spots on S2 (Fig. 7A).....
..... *C. ignifascia* Mocsáry (♂)

***Chrysis ignifascia* Mocsáry, 1893**

Figs 2, 3, 4, 5, 7A

Chrysis (Holochoyris) ignifascia Mocsáry, 1893: 215. Holotype, ♀, Myanmar (MSNG) (examined). Rosa 2009: 233.

Chrysis (Holochoyris) birmanica Mocsáry, 1893: 214. Holotype, ♂, Myanmar (MSNG) (examined). Rosa 2009: 221. (Synonymised by Kimsey and Bohart 1991: 420).

Chrysis (Chrysur) taiwana Tsuneki, 1970: 7. Holotype, ♂, China (OMNH) (examined). Syn. n.

Type material. Holotype, ♀, MYANMAR [Burma] Palon (Pegù), L. Fea VIII–IX.[18]87, *Chrysis ignifascia*, ♀, Mocs. n. sp. <handwritten by Mocsáry>, Typus, *C. ignifascia*, Mocs., ♀, typus! <handwritten by Mantero> (MSNG). Holotype, ♂, MYANMAR [Burma] Bhamò, Birmania, Fea VIII 1885, *Chrysis birmanica*, ♂, Mocs. n. sp. <handwritten by Mocsáry>, Typus, *C. birmanica*, Mocs., ♂, typus! <handwritten by Mantero> (MSNG). Holotype, ♂, [CHINA], Formosa [Taiwan], Pintung Hsien, Hengchun, 2.VIII.1966. leg. K. Tsuneki // *Chrysis (Chrysur) taiwana* Tsuneki Holotypus <handwritten> (OMNH). **Additional material:** 1♀, CHINA, Guangdong, Fogang, Guanyinshan, 15–16.IX.2007, leg. Zai-fu Xu, CAP001 (SCAU); 1♀, CHINA, Fujian, Jianning, 8.VI.1959, leg. Gen-tao Jin & Ming-yang Lin, 34022848 (SHEM); 1♀, CHINA, Taiwan, Koshun, Apr. 1937, coll. K. Iwata (NMLS); 1♂, MYANMAR, Lower Burma, Shwègyin 6.[18]98 Bingham, *Chrysis burmanica* [!], ♂, Mocs., *burmanica* [!] Mocs. det. Bingham, *Chrysis burmanica* [!] Mocs. det. Mocsáry (HNHM).

Diagnosis. *Chrysis ignifascia* Mocsáry female is easily recognised by the reddish golden stripe on T2 (Figs 2E, 2F). The male is green to blue, similar to *C. yoshikawai* Tsuneki, but can be separated by the longitudinal sub-triangular black spots on S2 (Fig. 7A) (transverse and sub-reniform in *C. yoshikawai* (Fig. 7B)).

Distribution. China (Fujian, Taiwan, Guangdong) (Rosa *et al* 2014), Myanmar (Mocsáry 1893; Kimsey and Bohart 1991).

Remarks. The colour dimorphism between male and female of *C. ignifascia* misled some authors including Mocsáry (1893), who described the female as *C. ignifascia* (Fig. 4) and the male as *C. birmanica* (Fig. 5). Tsuneki (1961, 1970) did not mention either *C. ignifascia* or *C. birmanica* in his publications and described the male as *C. taiwana* (Fig. 3), comparing its body colouration with that of *C. yoshikawai* Tsuneki, 1961. After types examination we propose the synonymy *C. ignifascia* Mocsáry, 1893 = *C. taiwana* Tsuneki, 1970, syn. n.

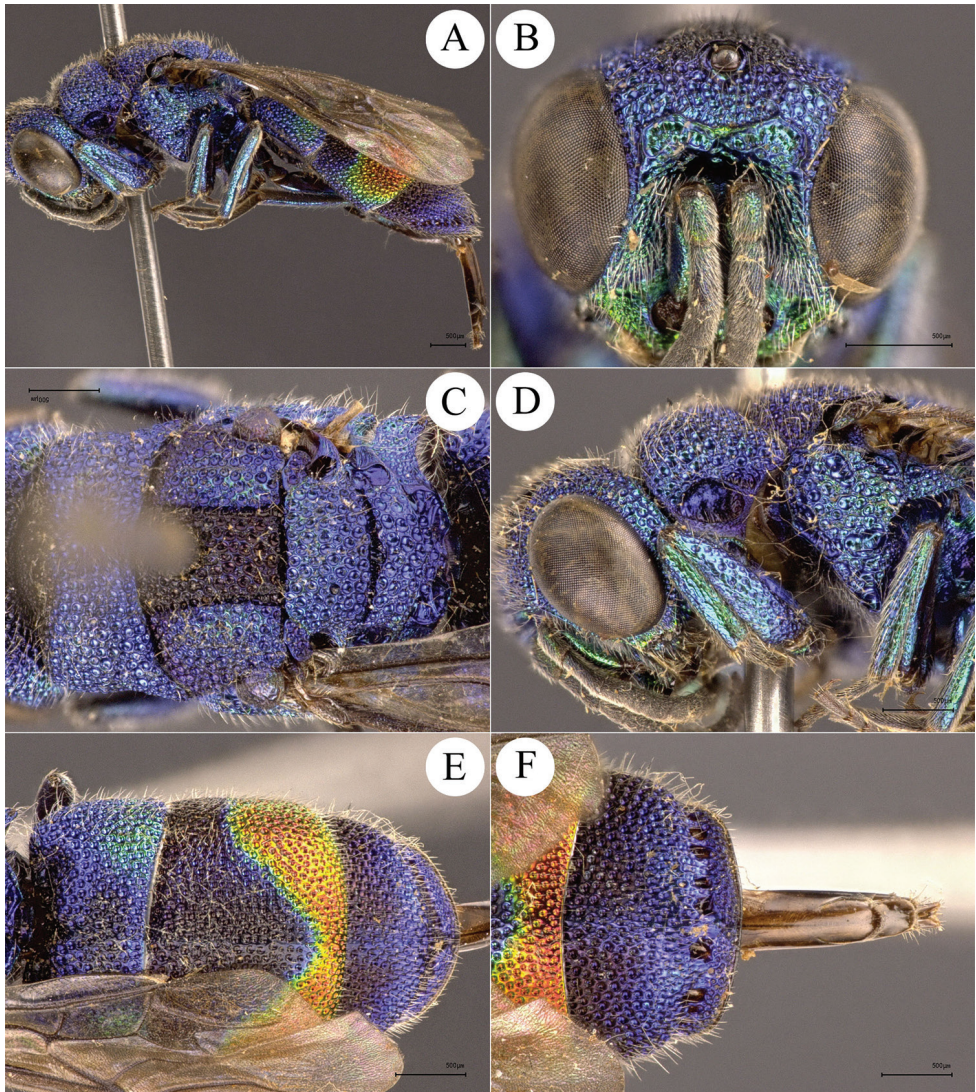


Figure 2. *Chrysis ignifascia* Mocsáry, 1893, ♀ from Fujian. **A** Habitus, lateral view **B** head, frontal view **C** mesosoma, dorsal view **D** head, pronotum and mesopleuron, lateral view **E** metasoma, dorsal view **F** T3, dorsal view.

***Chrysis yoshikawai* Tsuneki, 1961**

Figs 6A–F, 7B

Chrysis yoshikawai Tsuneki, 1961: 371. Holotype, ♀, Thailand (depository?).

Chrysis yoshikawai: Kimsey and Bohart 1991: 479 (Thailand).

Additional material. 1♀, CHINA, Yunnan, Jingdong, Jingping, 28.IV.2005, leg. He-sheng Wang, CAP004 (SCAU); 1♀, CHINA, Yunnan, Dehong, Longchuan, 1–9.VIII.2011, leg. Ju-jian Chen, CAP005 (SCAU).

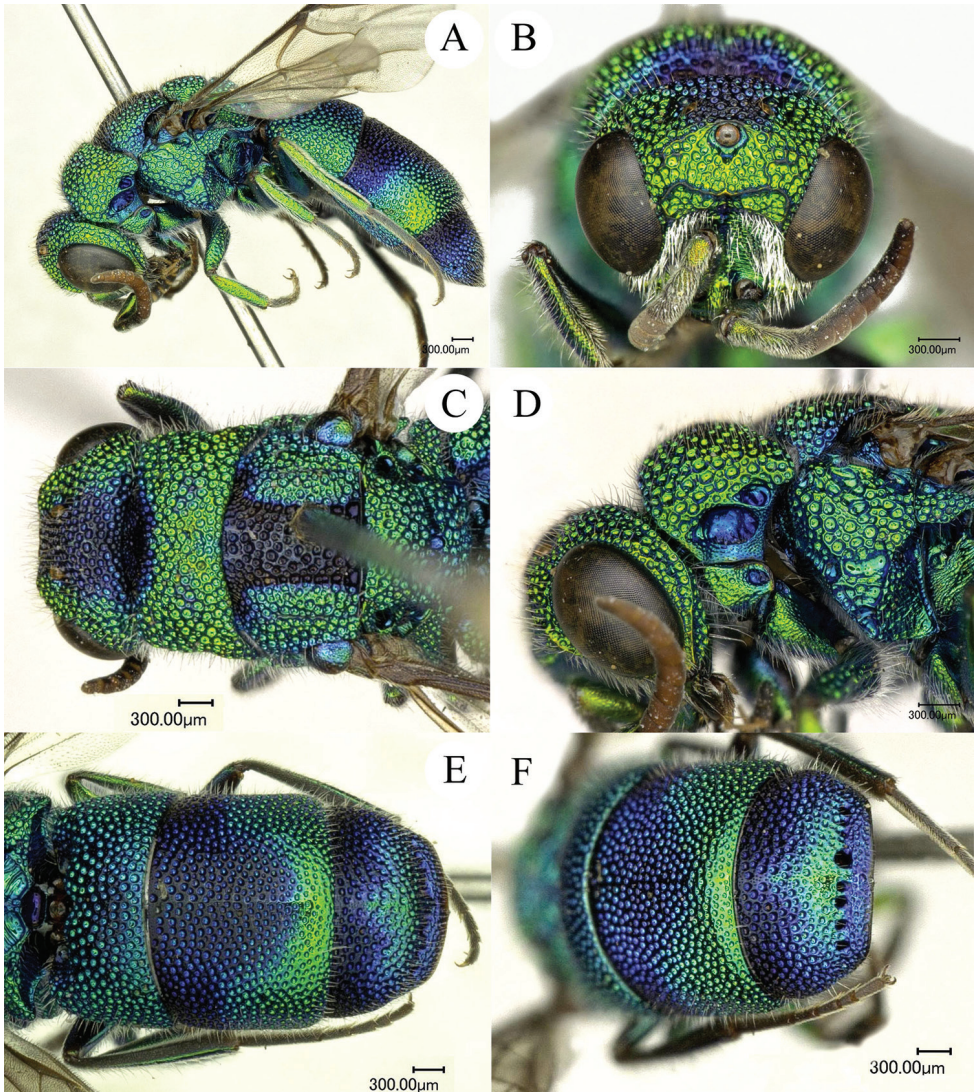


Figure 3. *Chrysis taiwana* Tsuneki, 1970, holotype, ♂. **A** Habitus, lateral view **B** head, frontal view **C** head and mesosoma, dorsal view **D** head, pronotum and mesopleuron, lateral view **E** metasoma, dorsal view **F** T3, dorsal view (photos by courtesy of Rikio Matsumoto, OMNH).

Diagnosis. *Chrysis yoshikawai* is similar to *C. ignifascia*, but can be separated by: female body entirely green to blue, without reddish or golden colouration (with reddish golden stripe posteriorly on T2 in *C. ignifascia*), male S2 with sub-reniform and transverse black spots (Fig. 7B) (sub-triangular and longitudinal in *C. ignifascia*, Fig. 7A), and T3 with darkened clover-shaped spot (Figs 6E, 6F).

Description. *Female* (Fig. 6A). Body length 7.5 mm.

Head. Scapal basin fully striate and with micropunctate ground sculpture. TFC double, sharply raised (Fig. 6B). Relative length of P:F1:F2:F3 = 1.0:1.3:1.0:0.7. OOL

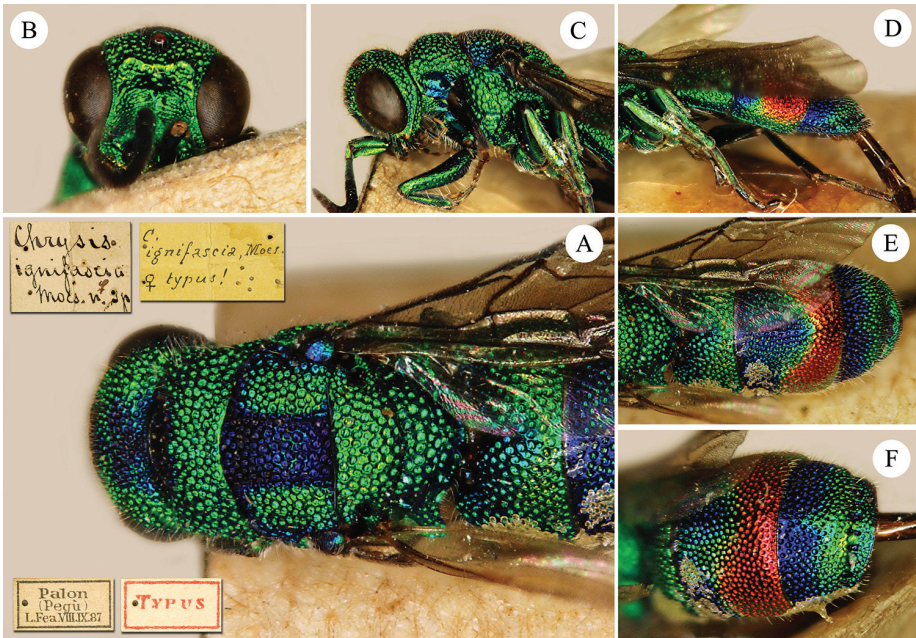


Figure 4. *Chrysis ignifascia* Mocsáry, 1893, holotype, ♀. **A** Head, mesosoma and T1, dorsal view **B** head, frontal view **C** head and mesosoma, lateral view **D** metasoma, lateral view **E** metasoma, dorsal view **F** T2 and T3, dorso-lateral view.

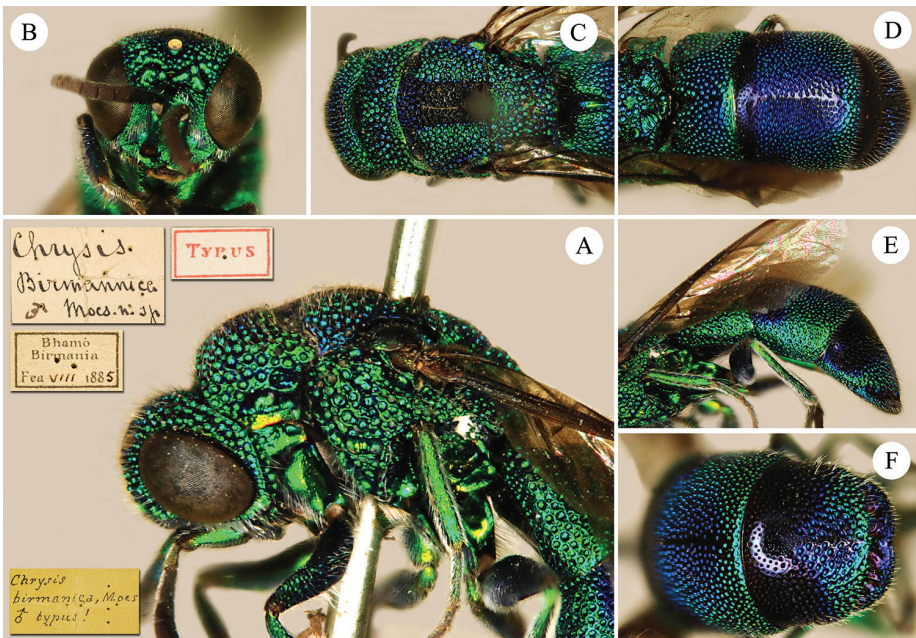


Figure 5. *Chrysis birmanica* Mocsáry, 1893, holotype, ♂ (= *C. ignifascia* Mocsáry). **A** Head, mesosoma and T1, lateral view **B** head, frontal view **C** head, mesosoma and T1, dorsal view **D** metasoma, dorsal view **E** metasoma, lateral view **F** T2 and T3, dorsal view.

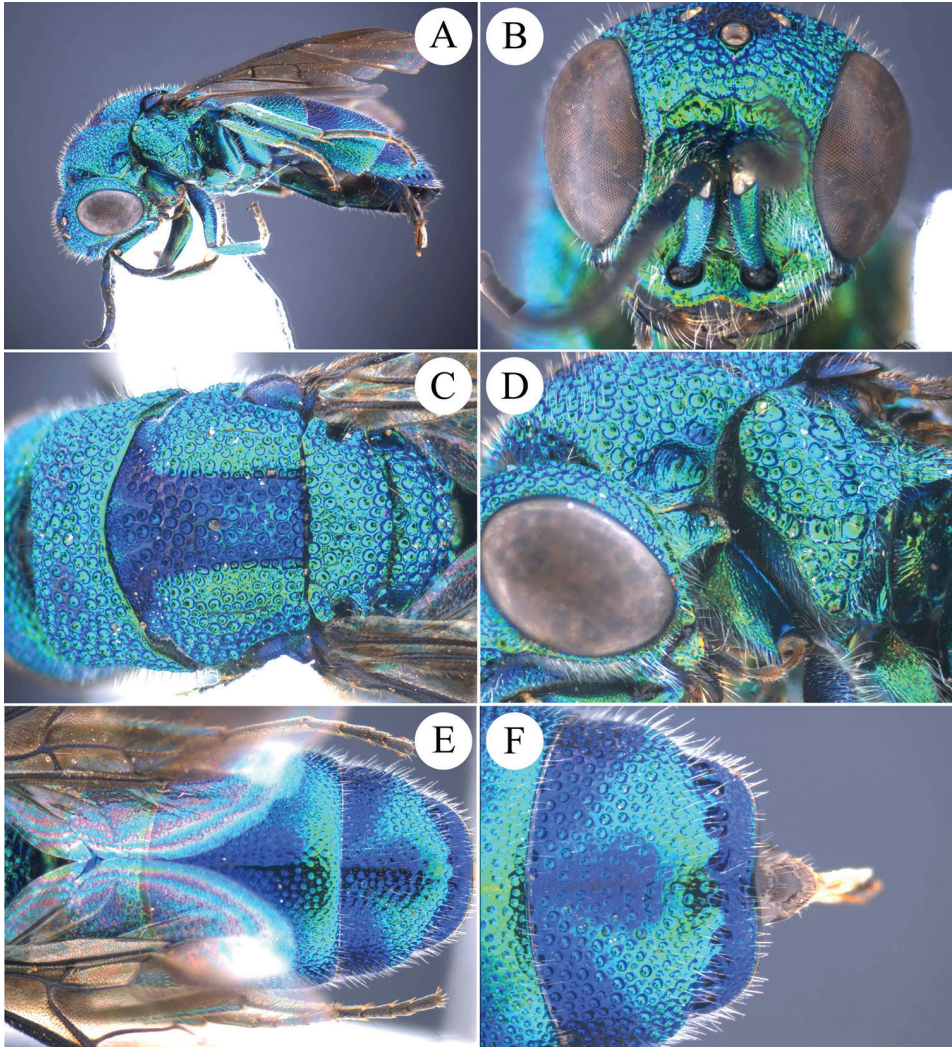


Figure 6. *Chrysis yoshikawai* Tsuneki, 1961, ♀ from Yunnan. **A** Habitus, lateral view **B** head, frontal view **C** mesosoma, dorsal view **D** head, pronotum and mesopleuron, lateral view **E** metasoma, dorsal view **F** T3, dorsal view.

= 2.0 MOD; BOL = 1.5 MOD; POL = 2.1 MOD; MS = 0.5 MOD; subantennal space 0.5 MOD. Genal carina well developed throughout its length (Fig. 6D).

Mesosoma. Pronotal groove shallow and reaching 2/3 of pronotum length. Mesoscutum and mesoscutellum evenly punctate; metanotum with coarse punctures (Fig. 6C). Mesopleuron with deep episternal and scrobal sulci, both sulci with large foveae (Fig. 6D).

Metasoma. Metasoma with large, even punctures; the punctures as large as mesoscutum (Fig. 6E). T2 and T3 with median ridge; T3 weakly saddled with deep pit row; apex of T3 slightly concave in the middle (Fig. 6F). Black spots on S2 sub-reniform, transverse, separated by less than 1.0 MOD (Fig. 7B).

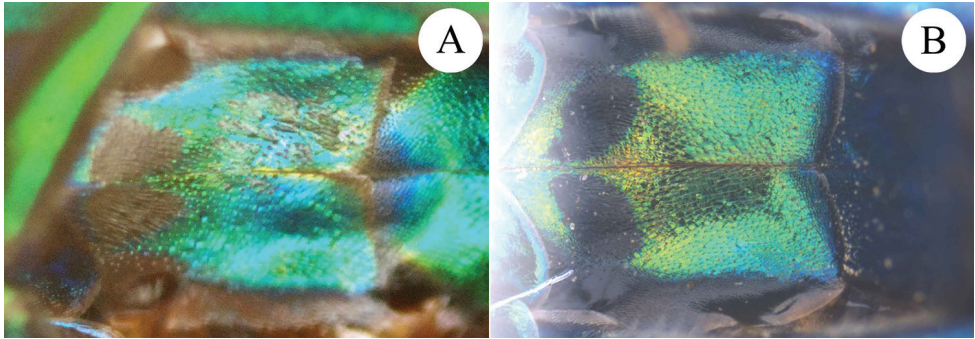


Figure 7. Black spots on S2 of females, ventral view. **A** *Chrysis ignifascia* Mocsáry, 1893 **B** *Chrysis yoshi-kawai* Tsuneki, 1961.

Colouration. Body metallic blue to green, with dark blue on vertex, mesoscutum medially, tegula, T1 anteriorly, T2 anteriorly and T3 anteriorly (a typical clover-shaped pattern) and posteriorly (from pit row to posterior margin).

Male. Similar to female.

Distribution. China (new record). Thailand (Tsuneki 1961; Kimsey and Bohart 1991).

Remarks. Tsuneki (1961) did not mention the repository of the holotype. Kimsey and Bohart (1991) reported it at OMNH, wherein it was not found (Dr. Rikio Matsumoto, pers. comm.).

Chrysis elegans species-group

Chrysis (*Chrysis*) *elegans* species-group: Linsenmaier 1959: 93 (key), 136 (diagnosis).

Chrysis elegans species-group: Kimsey and Bohart 1991: 325 (key), 345 (diagnosis), 329 (fig. 107d), 335 (fig. 109u), 341 (fig. 111a).

Diagnosis. The *elegans* species-group is characterised by having habitus cylindrical and elongate; TFC weak or indistinct; face slightly broadened below, with subparallel and short MS; head broadened behind compound eyes in dorsal view; apex of T3 without distinct teeth, at most undulate and laterally with blunt angles; posterior margin of T3 bending downwards in females; body pubescence short and whitish; forewing radial cell closed. Body length usually 7 to 11 mm; only the North-African *C. albitarsis* is smaller (5–6 mm). Most Palearctic species have red to golden red metasoma; females and sometimes males have mesosoma partially red. Males of *C. elegans* from eastern Mediterranean countries and Middle East can be entirely emerald green to golden green.

Description. F1 l/w = 1.5–2.5. Scapal basin medially polished, especially in females. TFC weak or faint, weakly M-shaped. MS = 0.5–1.0 MOD. Pronotum longer than or as long as mesoscutellum; mesopleuron with deep scrobal sulcus. T3 pit row with small, separated pits; T3 without apical teeth, at most undulate. Black spots on S2

usually large, sometimes antero-medially fused. Male genitalia with apex of gonocoxae and cuspis considerably hirsute (Arens 2015).

Biology. Members of this species-group are parasitoids of Apidae Megachilinae (Linsenmaier 1959; Kimsey and Bohart 1991).

Species included. The *elegans* species-group currently includes eighteen species: *Chrysis albitarsis* Mocsáry, 1889; *C. angustifrons* Abeille de Perrin, 1878; *C. bovei* (du Buysson, 1898a); *C. castillana* (du Buysson in André, 1896); *C. deposita* Nurse, 1904; *C. dissimilis* Dahlbom, 1854; *C. eldari* (Radoszkowski, 1893); *C. elegans* Lepeletier, 1806; *C. hemera* Semenov, 1954; *C. io* Semenov, 1910; *C. joppensis* du Buysson, 1887; *C. lapislazulina* sp. n.; *C. lateralis* Dahlbom, 1845; *C. lepida* Mocsáry, 1889; *C. pushkiniana* Semenov, 1967; *C. pyrrha* Semenov, 1967; *C. rubricollis* du Buysson, 1900; *C. rueppelli* du Buysson, 1904.

Distribution. Palaearctic and Oriental regions.

Discussion. The *Chrysis elegans* species-group is primarily a West-Palaearctic group (Kimsey and Bohart 1991; Linsenmaier 1999; Rosa et al. 2015c), distributed from the Mediterranean basin to Middle East and central Asia, plus a new species herewith described. Only two species, *Chrysis dissimilis* Dahlbom, 1854, and *C. lapislazulina* sp. n. are known in the Oriental Region so far.

This species-group was established by Linsenmaier (1959), who originally included seven species: *C. elegans* Lepeletier, 1806; *C. angustifrons* Abeille de Perrin, 1878; *C. joppensis* du Buysson, 1887; *C. castillana* du Buysson in André, 1896; *C. ignicollis* Trautmann, 1926a; *C. separata* Trautmann, 1926a; and *C. meyeri* Linsenmaier, 1959. Later, Linsenmaier (1968) included also *C. ashabadensis* Radoszkowski, 1891 and synonymised *C. meyeri* with *C. albitarsis* Mocsáry. Kimsey and Bohart (1991) included twenty-one species, but their species-list has been partially modified in the last years: *C. albitarsis* Mocsáry which was placed into the *cuprata* species-group by Kimsey and Bohart (1991), was reintroduced into the *elegans* species-group by Linsenmaier (1999); *C. kohli* Mocsáry, 1889 was mistakenly placed into both genera *Chrysis* (*elegans* species-group) and *Pseudospinolia* Linsenmaier, 1951 (Kimsey and Bohart 1991: p. 428, sub *C. kohlii*, p. 547, as synonym of *P. marqueti* (du Buysson, 1887)), while it actually belongs to the genus *Pseudospinolia*; *C. emarginatula* Spinola, 1808 and *C. tingitana* Bischoff, 1935, both included by Kimsey and Bohart (1991) into the *elegans* species-group, are clearly separated by morphological (Linsenmaier 1959, 1999) and biological features, being parasitoids of Masarinae (Vespidae) (Linsenmaier 1968; Mauss 1996; <http://www.chrysis.net/forum/>) and not of Apoidea, the only known hosts of members in the *elegans* species-group (Linsenmaier 1959, 1999; Kimsey and Bohart 1991). Therefore, we follow Linsenmaier's interpretation (1959, 1999), including these two species into the *emarginatula* species-group.

More recently, after type examination, *C. ashabadensis* was transferred into the *succincta* species-group and *C. ignicollis* was considered as a junior synonym of *C. eldari* (Radoszkowski, 1893) (Rosa et al. 2015c); *C. separata* was considered as synonym of *C. lateralis* Dahlbom (Rosa and Vårdal 2015). Arens (2015) elevated the subspecies *C. ignicollis graeca* Arens, 2004 to species rank, but in our opinion *C. graeca* is to be

regarded as synonym of *C. pushkiniana* Semenov (Rosa in Arens 2015). *C. goetheana* Semenov, 1967 (whose type material has been examined at ZISP) is here transferred into the *maculicornis* species-group because of the following characteristics: male with shortened F1 and F2, female with distinct straight TFC, scapal basin entirely microridged, and MS very short.

The synonymy proposed by Trautmann (1926b), *C. cupricollis* Trautmann, 1921 = *C. rubricollis* du Buysson, 1900 is to be verified. We propose to consider *C. mesochlora* Mocsáry a nomen dubium, since the holotype of *C. mesochlora* was destroyed in Hamburg during the World War II (Kimsey and Bohart 1991), and no specimen identified by Mocsáry can be traced in his collection in Budapest or in any other European collections. Moreover, this species has never been mentioned after Mocsáry's description, except in Kimsey and Bohart (1991).

***Chrysis lapislazulina* Rosa & Xu, sp. n.**

<http://zoobank.org/82BF0F09-535A-43C4-9AD8-FEE4F5C94D8E>

Figs 8, 9

Material examined. Holotype, ♀, CHINA, Yunnan, Yuxi (20°21'07"N 102°32'47"E), 20.VII.2003, leg. Qiang Li (SCAU).

Diagnosis. *Chrysis lapislazulina* sp. n. is recognised by the following characteristics: body blue with golden reflection (Figs 8, 9A); pronotum, mesoscutum and mesoscutellum medially with polished intervals among punctures (Fig. 9C); metasoma with fine and even punctures (Fig. 9E); apex of T3 without undulation or teeth (Fig. 9E). It can be distinguished from another Oriental species of the species-group, *C. dissimilis* by: almost uniform body colouration (mesosoma green with red scutellum and golden-red metanotum, and metasoma green with blue stripes antero-laterally on T2 and T3 in *C. dissimilis* (Fig. 10A)); apex of T3 without tooth or undulation (medially sinuous and with blunt lateral teeth in *C. dissimilis*, Figs 10C, 10E); black spots on S2 sub-rectangular (Fig. 9F) (sub-oval in *C. dissimilis*, Fig. 10F). The female of *C. lapislazulina* sp. n. can be separated from females of other Palaearctic species by: metasoma entirely blue (red to golden-red in other species); metasoma with even and fine punctures (large punctures, with or without intervals and usually decreasing in diameter posteriorly in other species); black spots on S2 sub-rectangular, basally separated by more than two MOD (vs. large and sub-oval, basally fused or narrowly separated in other species).

Description. Holotype: *Female*. Body length 8.0 mm.

Head. Scapal basin medially polished and laterally micropunctate (Fig. 9B). TFC M-shaped, with two weak branches extending to the level of mid ocellus. Anterior margin of clypeus medially not emarginate, laterally with thickened brownish rim. Vertex with coarse punctures. Genal carina weak, present from mid gena to mandible. Relative length of P:F1:F2:F3 = 1.0:1.3:0.8:0.7; OOL = 2.0 MOD; POL = 2.3 MOD; MS = 1.0 MOD; subantennal space 1.0 MOD.

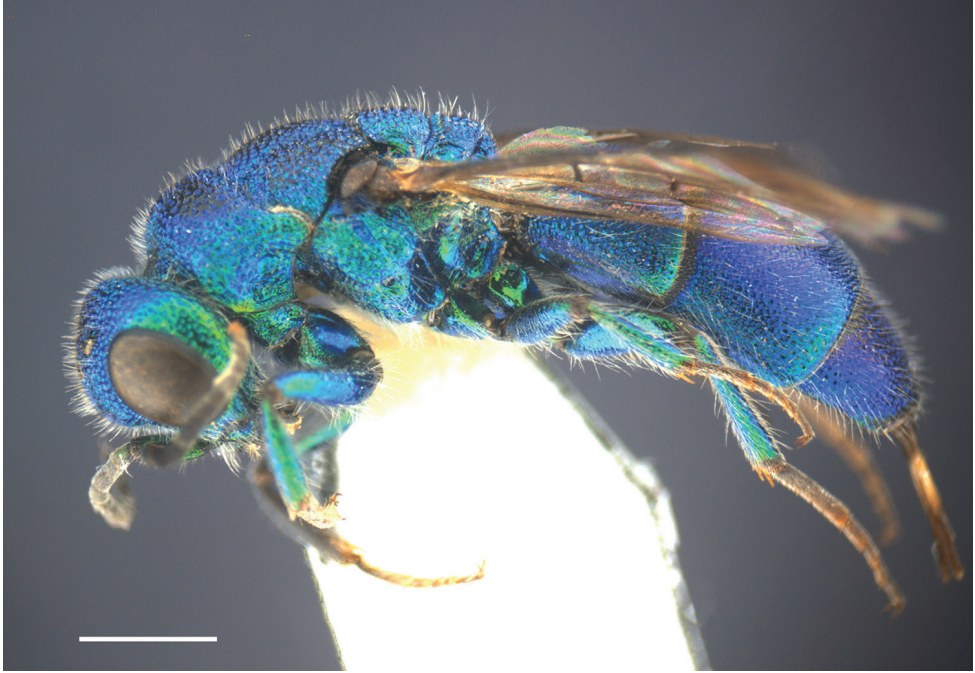


Figure 8. *Chrysis lapislazulina* Rosa & Xu, sp. n., holotype, ♀, habitus, lateral view. Scale bar=1 mm.

Mesosoma. Pronotum slightly longer than mesoscutellum (Fig. 9C); pronotal groove broad and almost reaching 2/3 of pronotum length; pronotal side with depression in dorsal view; punctuation coarse along anterior and lateral margins, with smaller punctures on pronotal groove and along posterior margin; pronotal dorsum with two darker areas with minute scattered punctures and impunctate intervals. Median lobe of mesoscutum in anterior half with broad, darker median area, with larger punctures and broader polished intervals; posterior half with even larger, contiguous, irregular punctures; lateral lobes of mesoscutum with more or less close, partly confluent punctuation; parapsidal furrow well incised. Mesoscutellum darker medially, with large punctures and broader intervals, smooth towards anterior edge; laterally with smaller, dense punctures and micropunctate intervals, punctuation reaching posterior edge. Metanotum slightly convex, with somewhat uneven punctures becoming denser postero-medially; anterior margin of metanotum with row of narrow, antero-posteriorly elongate foveae. Mesopleuron with small, shallow and round punctures, and shallow scrobal and episternal sulci (Fig. 9D).

Metasoma. Finely and densely punctate; punctuation unusually smaller than others species of this species-group; their diameter about 1/3 to 1/4 of largest punctures on mesoscutum. T1 elongate (Fig. 9E), half as long as T2. T2 with weak or faint median ridge. T3 weakly saddled, with row of shallow small pits; apex of T3 without tooth or undulate. Black spots on S2 sub-rectangular and connected to lateral margins, widely separated medially (Fig. 9F).

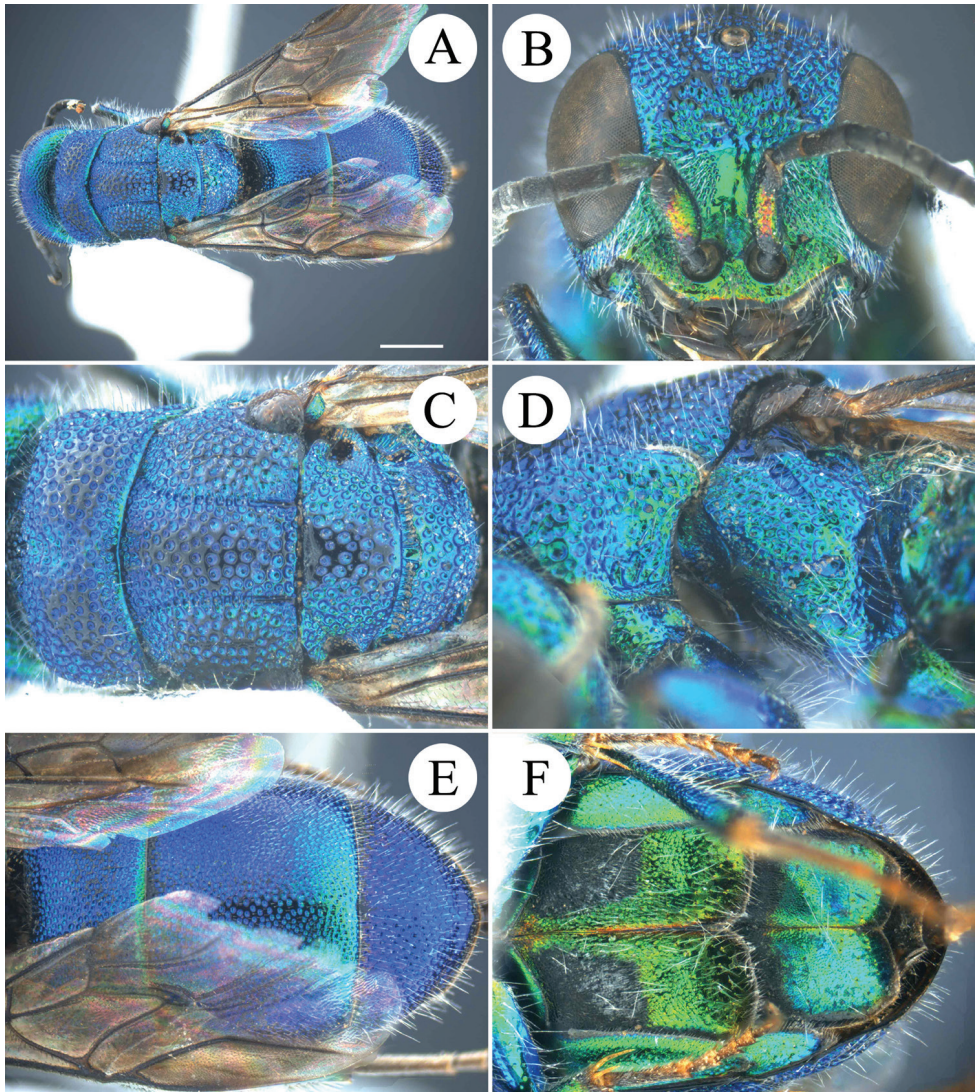


Figure 9. *Chrysis lapislazulina* Rosa & Xu, sp. n., holotype, ♀. **A** Habitus, dorsal view **B** head, frontal view **C** mesosoma, dorsal view **D** pronotum and mesopleuron, lateral view **E** metasoma, dorsal view **F** black spots on S2, ventral view. Scale bar 1 mm.

Colouration. Body blue, darker on vertex, pronotum dorso-laterally, median and lateral lobes of mesoscutum medially (Figs 8, 9A) and mesoscutellum medially, metallic green on face and metasomal sternites (Figs 9B, 9F), with golden reflection on clypeus, scape and pedicel. Flagellomeres black (Fig. 9B). Tegula blackish brown, almost without metallic reflections. Post-tegula bright metallic blue (Fig. 9C). Forewing infusate, with darkened anterior margin.

Male. Unknown.

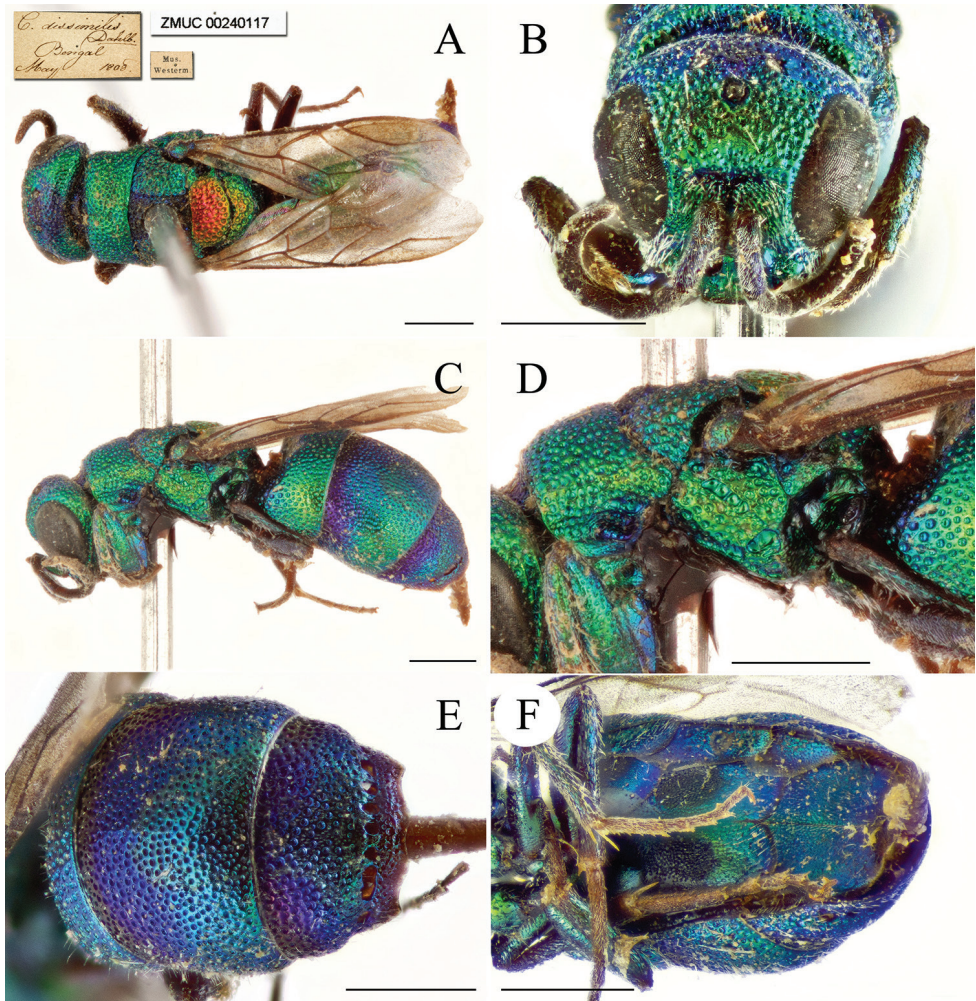


Figure 10. *Chrysis dissimilis* Dahlbom, 1854, holotype, ♀. **A** Habitus, dorsal view **B** head, frontal view **C** habitus, lateral view **D** pronotum and mesopleuron, lateral view **E** metasoma, dorso-posterior view **F** black spots on S2, ventral view. Scale bar 1 mm (photos by courtesy of Lars Vilhelmsen, ZMUC).

Distribution. China (Yunnan).

Etymology. The specific epithet *lapislazulina* refers to the intense blue colouration with darkened areas and golden reflections; this peculiar colouration resembles the semi-precious stone lapis lazuli.

Chrysis maculicornis species-group

Chrysis (*Cornuchrysis*) *maculicornis* species-group: Linsenmaier 1959: 173 (*partim*).

Chrysis maculicornis species-group: Kimsey and Bohart 1991: 353 (key), 341 (fig. 111m).

Diagnosis. The *maculicornis* species-group is characterised by having males with shortened F1 and F2, F1 slightly longer than F2, but shorter than F3; females with F1 l/w ≈ 2.0 ; MS usually 0.2–1.3 MOD; face slightly wedge-shaped in frontal view.

Description. Male F1 l/w = 1.0–1.4; F1 slightly longer than F2, but shorter than F3. Female F1 l/w ≈ 2.0 . Scapal basin micropunctate or microridged medially. TFC well developed, biconvex. Mid ocellus sometimes lidded. MS usually 0.2–1.3 MOD. T3 in female sometimes with prepit bulge; pit row usually well developed. T3 with four sharp apical teeth. Black spots on S2 large and sub-oval, separated medially and sometimes connected to lateral margins.

Species included. Kimsey and Bohart (1991) in the species-group diagnosis included fifteen Palaearctic species, but in their checklist reported twenty-two Palaearctic species, one Oriental (*C. perfecta* Cameron, 1897) and one Afrotropical (*C. rhinata* Bohart, 1988). The list of Palaearctic species needs to be further verified, because some species have been included in the *cerastes* species-group (e.g. *C. subdistincta* Linsenmaier).

Distribution. Palaearctic, Oriental and Afrotropical regions.

Remarks. Linsenmaier (1959, 1968) included in the *maculicornis* species-group only the species with shortened F1 and F2 and flagellomeres yellowish beneath in males (e.g. *C. maculicornis* Klug, 1845, *C. fulvicornis* Mocsáry, 1889, and *C. stigmaticornis* Linsenmaier, 1968). Kimsey and Bohart (1991) added the species close to *C. annulata* du Buysson, 1887 (e.g. *C. blanchardi* Lucas, 1849; *C. distincta* Mocsáry, 1887; *C. rectianalis* Linsenmaier, 1968, etc.) into the *maculicornis* species-group, whereas Linsenmaier (1959, 1968) included them in the *cerastes* species-group. In this paper we follow Kimsey and Bohart's (1991) interpretation of the *maculicornis* species-group.

Chrysis subdistincta Linsenmaier, 1968

Fig. 11

Chrysis (Chrysis) subdistincta Linsenmaier, 1968: 110. Holotype ♀; Turkmenistan (Transcaspia) (NMLS) (examined).

Chrysis subdistincta: Kimsey and Bohart 1991: 467 (*cerastes* species-group).

Type material. Holotype, ♀, [TURKMENISTAN] Transcaspia Imam-baba W.Koshantschikoff // ♀ Type *Chrysis* L. *subdistincta* Lins. Linsenmaier det. 66 (NMLS). **Additional material:** 1♀, CHINA, Gansu, Jiuquan, Huangnibao, 1700 m, 15.VII.2010, leg. Xu-feng Zhang & Feng-li Cui, No. 34020575 (SHEM); 1♀, CHINA, Gansu, Jiuquan, Huangnibao, 1700 m, 16.VII.2010, leg. Xu-feng Zhang & Feng-li Cui, No. 34020062 (SHEM).

Diagnosis. *Chrysis subdistincta* belongs to the Palaearctic *C. annulata* sub-group and is the only known Chinese species of the *maculicornis* species-group. It can be recognised by apex of T3 with median pair of apical teeth longer than lateral pair (all the apical teeth are of similar length in other species), and pit row with large, fused pits (usually small, widely separated in other species).

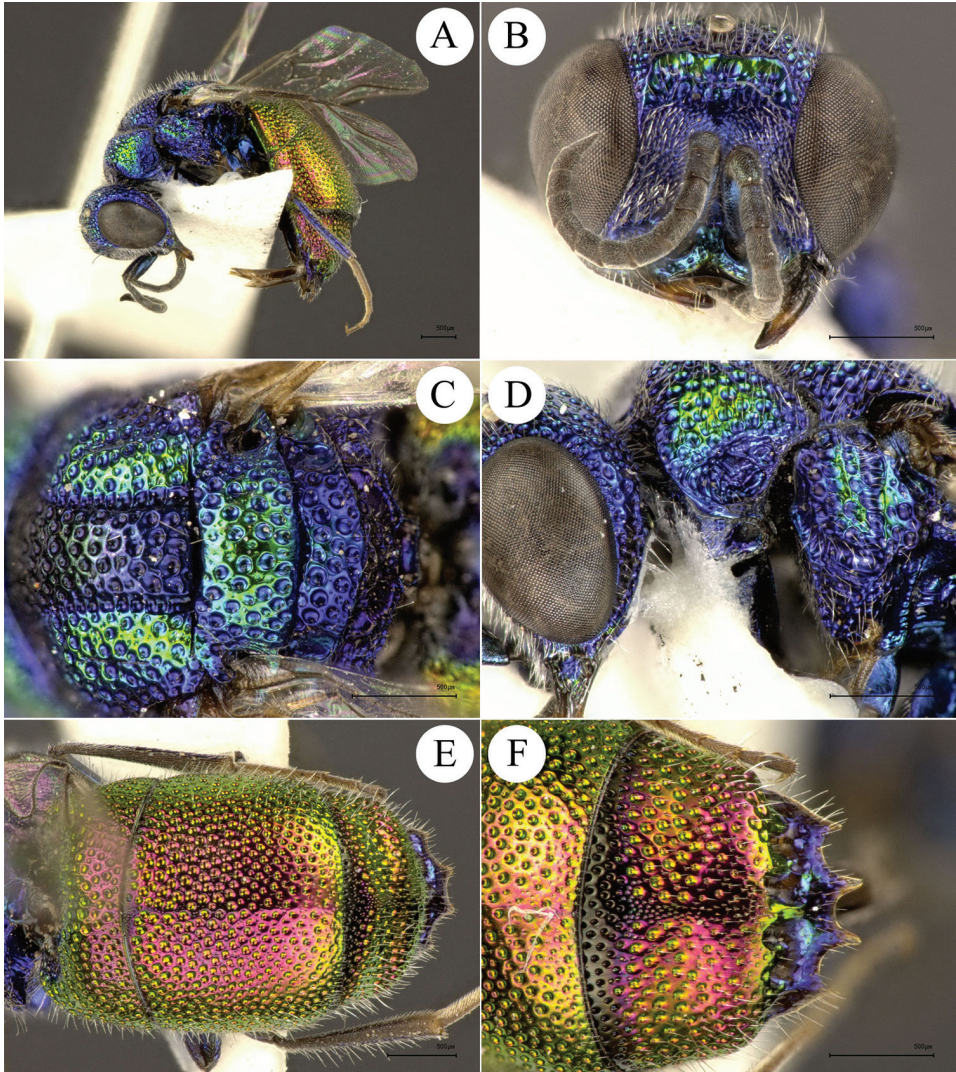


Figure 11. *Chrysis subdistincta* Linsenmaier, 1968, ♀ from Gansu. **A** Habitus, lateral view **B** head, frontal view **C** mesoscutum, mesoscutellum and metanotum, dorsal view **D** head, pronotum and mesopleuron, lateral view **E** metasoma, dorsal view **F** T3, dorsal view.

Description. *Female* (Fig. 11A). Body length 6.5 mm.

Head. Scapal basin deep and micro-punctate (Fig. 11B), TFC well-developed, inverted U-shaped, with long branches in contact with eyes. Relative length of P:F1:F2:F3 = 1.0:1.2:1.0:1.0. OOL = 1.3 MOD; POL = 1.9 MOD; MS = 0.2 MOD; subantennal space 0.5 MOD. Anterior margin of clypeus broadly emarginate. Genal carina developed throughout its length.

Mesosoma. Pronotum medially narrowed, 0.8 times as long as mesoscutellum; pronotal groove faint. Pronotum, mesoscutum and mesoscutellum with large foveate

punctures; interspaces micropunctate. Notauli with large subquadrate foveae. Mesopleuron with deep and scrobiculate episternal and scrobal sulci (Fig. 11D).

Metasoma. *Metasoma* with deep, large round punctures (Fig. 11E). PD on T2 decreasing towards posterior margin. T2 and T3 with weak median ridge. T3 pit row slightly transversely bulging before pit row; pit row with large, laterally fused pits; apex of T3 with four pointed teeth, apically hyaline, with median pair of teeth longer than lateral pair (Fig. 11F).

Colouration. Head and mesosoma blue, with metallic green on TFC, vertex, pronotum and mesoscutum dorso-laterally, and mesoscutellum medially. *Metasoma* golden to metallic reddish, with metallic blue on T3 from pit row to apical teeth.

Male. Unknown.

Distribution. China (new record). Turkmenistan (Linsenmaier 1968).

Remarks. Kimsey and Bohart (1991) followed Linsenmaier (1968) and placed *Chrysis subdistincta* into the *cerastes* species-group. Nevertheless, this species is closely related to *C. annulata* du Buysson from which it is recognizable by the elongate teeth on T3. *C. annulata* and related species have been included in the *maculicornis* species-group by Kimsey and Bohart (1991). Therefore, we consequently include *C. subdistincta* in this species-group.

Acknowledgments

We express our gratitude to Hai-sheng Yin and Li Dai (SHEM) for their kind help during the second author's visit to their museum. A special thanks to Rikio Matsumoto (OMNH) for the pictures of *Chrysis taiwana*, Lars Vilhelmsen (ZMUC) for the pictures of *Chrysis dissimilis* and Sergey Belokobylskij (ZISP) for cooperation in the study of the Chrysididae types, Fabrizio Rigato and Maurizio Pavesi (Museo Storia Naturale di Milano, Italy) for critical review and English proofreading, Frank Koch (MNHU), Roberto Poggi (MSNG) and Zoltán Vas (HNHM) for access to type material. We are indebted to subject editor Michael Ohl and the anonymous reviewers for their valuable comments and suggestions which improved the manuscript. The study was supported by the National Basic Research Program of China (No. 2013 CB127600) and the National Natural Science Foundation of China (30770265).

References

- Abeille de Perrin E (1878) Diagnoses de Chrysidés nouvelles. Published by the author, Marseille, 6 pp.
- Arens W (2004) Beitrag zur Taxonomie griechischer Goldwespen, mit Beschreibung dreier neuer Arten (Hymenoptera: Chrysididae). Linzer biologische Beiträge 36(2): 741–760.
- Arens W (2015) Beitrag zur Taxonomie der *Chrysis elegans*-Artengruppe in Kleinasien und Griechenland (Hymenoptera: Chrysididae). Mitteilungen der Münchner Entomologischen Gesellschaft 105: 57–64.

- Bischoff H (1910) Die Chrysididen des Königlichen Zoologischen Museums zu Berlin. Mitteilungen aus dem Zoologischen Museum in Berlin 4: 426–493.
- Bischoff H (1913) Hymenoptera – Fam. Chrysididae. In: Wytzman P (Ed.) Genera Insectorum – Fascicule 151. L. Desmet-Verteneuil, Bruxelles, 86 pp. [+ 5 pls]
- Bischoff H (1935) Chrysididae. In: Nadig A sen., Nadig A jun (Eds) Beitrag zur Kenntnis der Hymenopterenfauna von Marokko und Westalgerien – Zweiter Teil: Scoliidae, Tiphiidae, Mutillidae, Psammocharidae, Chrysididae (unter Mitwirkung von H. Bischoff, Berlin und H. Haupt, Halle a. Saale). Jahresbericht der Naturforschenden Gesellschaft Graubündens 73: 3–20.
- Bohart R (1988) New species of African *Chrysis* (Hymenoptera: Chrysididae). Psyche 94: 275–292. <https://doi.org/10.1155/1987/91074>
- Brullé A (1846) Des Hyménoptères. Lepeletier de Saint-Fargeau A “Histoire Naturelles des Insectes”. Tome Quatrieme, Paris, 680 pp.
- Cameron P (1897) Hymenoptera orientalia, or contributions to a knowledge of the Hymenoptera of the Oriental Zoological Region. VI. Proceedings of the Manchester Literary and Philosophical Society 41: 1–27.
- Dahlbom AG (1845) Dispositio Methodica Specierum Hymenopterorum, secundum Familias Insectorum naturales (Particula secunda) – Dissert. Typis Berlingianis, Lund, 20 pp. <http://dx.doi.org/10.5962/bhl.title.66977>
- Dahlbom AG (1850) Syd-Africanska Chrysides. Öfersigt af Kongliga Vetenskaps-Akademiens Förhandlingar 7(6): 135–142.
- Dahlbom AG (1854) Hymenoptera Europaea praecipue borealia, formis typicis nonnullis specierum generumve Exoticorum aut Extraneorum propter nexum systematicum associatis, per familias, genera, species et varietates disposita atque descripta. 2. Chrysis in sensu Linnæano. Friedrich Nicolai, Berlin, 412 pp. [+ 12 pls] <http://dx.doi.org/10.5962/bhl.title.15890>
- du Buysson R (1887) Descriptions de Chrysidides nouvelles. Revue d'Entomologie 6: 167–201.
- du Buysson R (1891–1896) Les Chrysides. In: André E (Ed.) Species des Hyménoptères d'Europe & d'Algerie (Tome Sixième). Les Chrysides. Vve Dubosclard, Paris, I–XII + 13–758 + 64 unnumbered pages + 32 pls. (1891) 1–88, (1892) 89–208, (1893) 209–272, (1894) 273–400, (1895) 401–624, (1896) 625–756 + 1–22, (1891–1896) 64 unnumbered pages + 32 pls. [Dating after Derksen and Scheiding 1963]
- du Buysson R (1896) Première contribution à la connaissance des Chrysidides de l'Inde. Journal of the Bombay Natural History Society 10: 462–481.
- du Buysson R (1898a [1897]) Étude des Chrysidides du Muséum de Paris. Annales de la Société Entomologique de France 66 (4), 518–580. [+ 2 tavv]
- du Buysson R (1898b) Contribution aux Chrysidides du Globe (3^e serie). Revue d'Entomologie 17(5): 125–147. [pl. 1]
- du Buysson R (1900) Contribution aux Chrysidides du Globe (4^e série). Revue d'Entomologie 19(7–10): 125–160. [2 pls]
- du Buysson R (1904) Contribution aux Chrysidides du Globe (5^e Série). Revue d'Entomologie 23(9–10): 253–275.
- Edney EB (1952) The Holonychinae (Family Chrysididae) of South Africa. Part II. *Chrysidea* Bischoff, *Gonochrysis* Licht. and *Holochrysis* Licht. Occasional Papers of the National Museums of Southern Rhodesia 2(17): 403–452. [+ 4 pl]

- Kimsey LS, Bohart RM (1991 [“1990”]) The Chrysidid Wasps of the World. Oxford University Press, New York, 652 pp.
- Klug F (1845) *Symbolae Physicae seu Icones et Descriptiones Insectorum quae ex Itinere per Africam borealem et Asiam occidentalem Friderici Guilelmi Hemprich et Christiani Godofredi Ehrenberg Medicinae et Chirurgiae Doctorum studio novae aut illustratae redierunt. Decas Quinta*. Officina Academica, Berolini, 41 pp. [(unnumbered) + pls. 41–50]
- Lepeletier [de Saint Fargeau] [ALM] (1806) Mémoire sur quelques espèces nouvelles d’insectes de la section des Hyménoptères, appelés les Porte-tuyaux, et sur les caractères de cette famille et des genres qui la composent. *Annales du Muséum d’Histoire Naturelle* 7: 115–129.
- Linnaeus C (1761) *Fauna Suecia sistens Animalia Sueciae Regni: Mammalia, Aves, Amphibia, Pisces, Insecta, Vermes. Distributa per Classes et Ordines, enera et Species, cum Differentiis, Specierum, Synonymis, Auctorum, Nominibus Incolarum, Locis natalium, Descriptionibus Insectorum. Editio Altera, Auctior*. Laurentius Salvius, Stockholm, 578 pp. [2 pl]
- Linsenmaier W (1951) Die europäischen Chrysididen (Hymenoptera). Versuch einer natürlichen Ordnung mit Diagnosen. *Mitteilungen der Schweizerischen Entomologischen Gesellschaft* 24(1): 1–110.
- Linsenmaier W (1959) Revision der Familie Chrysididae (Hymenoptera) mit besonderer Berücksichtigung der europäischen Spezies. *Mitteilungen der Schweizerischen Entomologischen Gesellschaft* 32(1): 1–232.
- Linsenmaier W (1968) Revision der Familie Chrysididae (Hymenoptera). Zweiter Nachtrag. *Mitteilungen der Schweizerischen Entomologischen Gesellschaft* 41 (1–4): 1–144.
- Linsenmaier W (1994) The Chrysididae (Insecta: Hymenoptera) of the Arabian Peninsula. *Fauna of Saudi Arabia* 14: 145–206.
- Linsenmaier W (1999) Die Goldwespen Nordafrikas (Hymenoptera, Chrysididae). *Entomofauna, Supplement* 10: 1–210.
- Lucas H (1849) Hyménoptères. Exploration scientifique de l’Algérie, pendant les années 1840, 1841, 1842, publiée par ordre du gouvernement et avec le concours d’une commission académique. Série IV: Sciences physiques-Zoologie III. (Sous-série II) Histoire naturelle des animaux articulés, par H. Lucas, Deuxième partie Insectes. Imprimerie nationale, 527 pp.
- Madl M, Rosa P (2012) A Catalogue of the Chrysididae (Hymenoptera: Chrysoidea) of the Ethiopian Region excluding Malagasy Subregion. *Linzer biologische Beiträge* 44(1): 5–169.
- Mauss V (1996) Contribution to the Bionomics of *Ceramius tuberculifer* Saussure (Hymenoptera, Vespidae, Masarinae). *Journal of Hymenoptera Research* 5: 22–37.
- Mocsáry A (1889) *Monographia Chrysididarum Orbis Terrarum Universi*. Hungarian Academy of Science, Budapest, 643 pp.
- Mocsáry A (1893) *Additamentum secundum ad monographiam Chrysididarum Orbis Terrarum Universi*. *Természetrzaji Füzetek* 15: 213–240.
- Mocsáry A (1911) *Species Chrysididarum novae*. *Annales Musei Nationalis Hungarici* 9: 443–474.
- Mocsáry A (1912a) *Species Chrysididarum novae. II*. *Annales Musei Nationalis Hungarici* 10: 375–414.

- Mocsáry A (1912b) Species Chrysididarum novae. III. Annales Musei Nationalis Hungarici 10: 549–592.
- Nurse CG (1902) New species of Indian Chrysididae. The Entomologist 35: 304–308.
- Nurse CG (1904) New species of Indian Hymenoptera. Journal of the Bombay Natural History Society 16(1): 19–26.
- Radoszkowski O (1891) Descriptions de Chrysidés nouvelles. Revue d'Entomologie 10: 183–198.
- Radoszkowski O (1893) Descriptions d'Hyménoptères nouveaux. Revue d'Entomologie 12: 241–245.
- Rosa P (2009) Catalogo dei tipi dei Crisidi (Hymenoptera, Chrysididae) del Museo Civico di Storia Naturale “G. Doria” di Genova. Annali del Museo Civico di Storia Naturale “G. Doria” 100: 209–272.
- Rosa P, Vårdal H (2015) An annotated catalogue of the types of Chrysididae (Hymenoptera) at the Swedish Museum of Natural History, Stockholm, with brief historical notes. ZooKeys 495: 79–132. <http://dx.doi.org/10.3897/zookeys.495.9356>
- Rosa P, Xu ZF (2015) Annotated type catalogue of the Chrysididae (Insecta, Hymenoptera) deposited in the collection of Maximilian Spinola (1780–1857), Turin. ZooKeys 471: 1–96. <http://dx.doi.org/10.3897/zookeys.471.6558>
- Rosa P, Wei NS, Xu ZF (2014) An annotated checklist of the chrysidid wasps (Hymenoptera, Chrysididae) from China. ZooKeys 455: 1–128. <http://dx.doi.org/10.3897/zookeys.455.6557>
- Rosa P, Wei NS, Xu ZF (2015a) Contribution to the genus *Omalus* Panzer, 1801 of China, with descriptions of two new species (Hymenoptera, Chrysididae). Zootaxa 4013(1): 67–76. <http://dx.doi.org/10.11646/zootaxa.4013.1.4>
- Rosa P, Wei NS, Xu ZF (2015b) Revalidation of genus *Chrysellampus* Semenov, 1932, with description of two new species from China (Hymenoptera, Chrysididae). Zootaxa 4034 (1): 148–160. <http://dx.doi.org/10.11646/zootaxa.4034.1.7>
- Rosa P, Wei NS, Xu ZF (2016a) The *inaequalis* species-group (Hymenoptera, Chrysididae, *Chrysis*) in China, with description of a new species. Zootaxa 4193 (2): 373–380. <http://dx.doi.org/10.11646/zootaxa.4193.2.11>
- Rosa P, Wiśniowski B, Xu ZF (2015c) Annotated type catalogue of the Chrysididae (Insecta, Hymenoptera) deposited in the collection of Radoszkowski in the Polish Academy of Sciences, Kraków. ZooKeys 486: 1–100. <http://dx.doi.org/10.3897/zookeys.486.8753>
- Rosa P, Wei NS, Feng J, Xu ZF (2016b) Revision of the genus *Trichrysis* Lichtenstein, 1876 from China, with description of three new species (Hymenoptera, Chrysididae). Deutsche Entomologische Zeitschrift 63(1): 109–136. <http://doi.org/10.3897/dez.63.7347>
- Semenov-Tian-Shanskij A (1967) [New species of gold wasps (Hymenoptera, Chrysididae)]. Trudy Zoologicheskogo Instituta Akademii Nauk SSSR 43: 118–184. [In Russian]
- Semenov-Tian-Shanskij A, Nikol'skaya MN (1954) [Cuckoo-wasps (Hymenoptera, Chrysididae) of Tajikistan]. Trudy Zoologicheskogo Instituta Akademiy Nauk SSSR 15: 89–137. [In Russian]
- Semenov-Tian-Shansky A (1910 [“1909”]) Chrysididarum species novae vel parum cognitae (Hymenoptera). IV. Horae Societatis Entomologicae Rossicae 9(3): 213–226.

- Smith F (1858) Catalogue of British Fossorial Hymenoptera, Formicidae, and Vespidae, in the Collection of the British Museum. Printed by order of the Trustees, 1858, 236 pp.
- Spinola M (1806–1808) Insectorum Liguriaie species novae aut rariores quas in agro Ligustico nuper detexit, descripsit et iconibus illustravit Maximilianus Spinola, adjecto catalogo specierum auctoribus jam enumeratarum, quae in eadem regione passim occurrunt. Gravier Yves, Genuae 1[1806]: xvii + 160 + 2 pls.; 2[1807]: ii + 1–82; 3[1808]: 83–262 + 5 pls. [Dating after Passerin d'Entrèves 1983]
- Trautmann W (1921) Neue Palearktische Goldwespen. Neue Beiträge zur systematischen Insektenkunde 2(4): 31–32; (5): 35–36.
- Trautmann W (1926a) Untersuchungen an einigen Goldwespenformen. Entomologische Zeitschrift 40: 4–12.
- Trautmann W (1926b) Beitrag zur Kenntnis Aegyptischer Chrysididen. Bulletin de la Société Royale Entomologique d'Égypte 19: 90–96.
- Tsuneki K (1955) *Chrysis* (*Pentachrysis*) of North-Eastern Asia (Hymenoptera, Chrysididae). Memoirs of the Faculty of Liberal Arts, Fukui University, Series II, Natural Science No. 4, Part 5(3): 35–46.
- Tsuneki K (1961) Chrysididae collected by the Osaka City University Biological Expedition to Southeast Asia, 1957–1958. Nature and Life in Southeast Asia 1: 367–382.
- Tsuneki K (1970) Ein Beitrag zur Goldwespen-fauna Formosas. Etizenia 49: 1–21.