

Overexpression of *AtDREB1A* Causes a Severe Dwarf Phenotype by Decreasing Endogenous Gibberellin Levels in Soybean [*Glycine max* (L.) Merr.]

Haicui Suo^{1,2}, Qibin Ma^{1,2}, Kaixin Ye¹, Cunyi Yang¹, Yujuan Tang¹, Juan Hao¹, Zhanyuan J. Zhang², Mingluan Chen³, Yuqi Feng³, Hai Nian^{1*}

1 The Guangdong Subcenter of National Center for Soybean Improvement, State Key Laboratory of Agricultural and Biological Resources Protection and Utilization in Subtropics, College of Agriculture, South China Agricultural University, Guangzhou, Guangdong, P. R. China, **2** Plant Transformation Core Facility, University of Missouri, Columbia, Missouri, United States of America, **3** College of Chemistry and Molecular Sciences, Wuhan University, Wuhan, Hubei, P. R. China

Abstract

Gibberellic acids (GAs) are plant hormones that play fundamental roles in plant growth and developmental processes. Previous studies have demonstrated that three key enzymes of GA20ox, GA3ox, and GA2ox are involved in GA biosynthesis. In this study, the *Arabidopsis DREB1A* gene driven by the CaMV 35S promoter was introduced into soybean plants by *Agrobacterium*-mediated transformation. The results showed that the transgenic soybean plants exhibited a typical phenotype of GA-deficient mutants, such as severe dwarfism, small and dark-green leaves, and late flowering compared to those of the non-transgenic plants. The dwarfism phenotype was rescued by the application of exogenous GA₃ once a week for three weeks with the concentrations of 144 μM or three times in one week with the concentrations of 60 μM. Quantitative RT-PCR analysis revealed that the transcription levels of the GA synthase genes were higher in the transgenic soybean plants than those in controls, whereas GA-deactivated genes except *GmGA2ox4* showed lower levels of expression. The transcript level of *GmGA2ox4* encoding the only deactivation enzyme using C₂₀-GAs as the substrates in soybean was dramatically enhanced in transgenic plants compared to that of wide type. Furthermore, the contents of endogenous bioactive GAs were significantly decreased in transgenic plants than those of wide type. The results suggested that *AtDREB1A* could cause dwarfism mediated by GA biosynthesis pathway in soybean.

Citation: Suo H, Ma Q, Ye K, Yang C, Tang Y, et al. (2012) Overexpression of *AtDREB1A* Causes a Severe Dwarf Phenotype by Decreasing Endogenous Gibberellin Levels in Soybean [*Glycine max* (L.) Merr.]. PLoS ONE 7(9): e45568. doi:10.1371/journal.pone.0045568

Editor: Miguel A. Blazquez, Instituto de Biología Molecular y Celular de Plantas, Spain

Received: May 21, 2012; **Accepted:** August 20, 2012; **Published:** September 18, 2012

Copyright: © 2012 Suo et al. This is an open-access article distributed under the terms of the Creative Commons Attribution License, which permits unrestricted use, distribution, and reproduction in any medium, provided the original author and source are credited.

Funding: This work was supported by the Major Projects of New Varieties Cultivation of Genetically Modified Organisms (2011ZX08004-002, 2008ZX08004-002 and 2009ZX08004-007); the Project of New Transgenic Lines Cultivation of Soybean Resistant to Stresses Adapting to the Southern China Region (2009A020102004); the Special Fund for Agro-Scientific Research in the Public Benefit (200903002); the Science and Technology Projects of Guangdong Province (2011A020102010); the Special Fund in the Public Benefit, the Ministry of Agriculture (nyhyzx07-004-11); the Combination Project of Production-Study-Research in Guangdong Province, the Ministry of Education (2011B090400328); and the National Nature Science Foundation (No. 91017013; No.31070327). The funders had no role in study design, data collection and analysis, decision to publish, or preparation of the manuscript.

Competing Interests: The authors have declared that no competing interests exist.

* E-mail: hnian@scau.edu.cn

These authors contributed equally to this work.

Introduction

Gibberellic acids (GAs) are a class of essential hormones that play a key role in plant growth and developmental processes during the entire life cycle [1]. Three major oxidase gene families of *GA 20ox*, *GA3ox* and *GA2ox* participate in GA synthesis by a series of conversions from geranylgeranyl diphosphate [2]. The levels of GAs are homeostatically modulated through the negative feedback regulation of the expression of *GA20ox* and *GA3ox* genes and positive feed forward regulation of *GA2ox* genes [3,4].

To date, there are eight *GA20ox* genes from *GmGA20ox1* to *GmGA20ox8*, six *GA3ox* genes from *GmGA3ox1* to *GmGA3ox6*, and ten *GA2ox* genes from *GmGA2ox1* to *GmGA2ox10* were identified in soybean, which were divided to four distinct subgroups (I, II, III, and C₂₀ GA2ox) [5]. The *GA20ox* and *GA3ox* genes belong to subgroups I and II, respectively. The *GmGA2ox* genes except *GmGA2ox4* belong to subgroup III, which also includes *Arabidopsis GA2ox1* to *GA2ox6* [5]. The function of the subgroup III members

are to deactivate bioactive GAs and hydroxylate C₁₉-GA substrates [6]. In *Arabidopsis*, overexpression of *AtGA2ox1*, -2, -3, -4, -5 and -6 resulted in dwarfism and reductions in bioactive GA levels [6]. In contrast, knockout mutants of five C₁₉-GA 2-oxidases genes showed lower bioactive GAs content and growth retardation, indicating that the *Arabidopsis* C₁₉-GA 2-oxidases mainly inactivate GA pathway [6]. In soybean, *GmGA2ox4* may potentially receives only C₂₀ (GA₁₂ and GA₅₃, precursors of bioactive GAs) as substrates and belongs to subgroup C₂₀ GA2oxs [5], which also includes *AtGA2ox7* and *AtGA2ox8*, *spinach GA2ox3*, and *OsGA2ox4*, -5, -6. Ectopic expression of *AtGA2ox7* and *AtGA2ox8* in transgenic tobacco (*Nicotiana tabacum*) also led to a dwarf phenotype [7]. This was also found with the activation of *OsGA2ox6* in rice [8]. However, C₂₀ GA2oxs were found to cause less severe GA-defective phenotypes than C₁₉ GA2oxs in rice [9].

DREB (dehydration responsive element binding) transcription factors encode dehydration responsive element binding protein (DREB1 and DREB2) and contain a conserved AP2/EREBP

motif. DREB specifically interacts with the dehydration-responsive element/C-repeat (DRE/CRT) *cis*-acting element, triggers the expression of downstream stress-related genes and confers plants improved tolerance to drought, low temperature and high salinity [10,11]. Interestingly, overexpression of *CBF3/DREB1A* and other *DREB1s* members under the control of the CaMV 35S promoter caused severe retardant growth of plants including *Arabidopsis* [12–16], *tobacco* [17–19], and *chrysanthemum* [20]. Exogenous GA₃ treatment reversed the dwarfism caused by overexpression of *DREB1B* and *DREB1F* [14,16,17], but failed to rescue the dwarfism by overexpression of *AtDREB1A* in *Arabidopsis* and *tobacco* [15,18,19].

Here, we reported that overexpression of *AtDREB1A* in soybean plants caused dwarf phenotype, which can be rescued by the application of exogenous GA₃. The transcript expression level of *GmGA2ox4* was up-regulated in transgenic soybean plants, which decreased the levels of bioactive GAs as regarding on the dwarfism of soybean.

Materials and Methods

Plasmid Construction

The plasmids pUC18 (TaKaRa) deleted the sites between *Bam*HI and *Pst*I and the paragraph of pZY102 with 35S-GUS-NOS sequence were digested with restriction endonuclease *Hind*III, and then the two linearized parts were linked together (thereafter named as pUC18-pZY102). A 663 bp opening reading frame (ORF) of *AtDREB1A* was amplified from the cDNA of *Arabidopsis* ecotype *Columbia* using reverse transcriptase PCR and ligated into pGEM -T Easy vector at the multiple cloning site (Promega). The primers were designed as 5'GGATCCCTTTCAGCAAACCATAACCA3' and 5'GGTACCACTCTCGTTTCTCGTTTAA3' with the *Bam*HI and *Kpn*I sites, respectively. The ORF paragraph of *AtDREB1A* digested with *Bam*HI/*Kpn*I was cloned into the site of GUS position of the intermediate vector of pUC18-pZY102. After sequencing confirmation, the paragraph of 35S-*AtDREB1A*-NOS from pUC18-pZY102 was inserted into pZY101 vector at *Hind*III site, which was named pZY101-*AtDREB1A*. The resulting binary vector was introduced into *Agrobacterium tumefaciens* strain EHA101 by the freeze-thaw method [21], which was then used for further genetic soybean transformation.

Soybean Transformation

Mature soybean seeds of cultivar Huachun 5 bred in Guangdong Subcenter of National Center for Soybean Improvement were surface sterilized for 13.5 h using chlorine gas produced by mixing 4.2 ml of 12 N HCl with 100 ml sodium hypochlorite in tightly sealed desiccators [22]. The cotyledonary-node method described herein was modified from that described previously [23] and the brief methodology is given below.

Each of explants was prepared by removing the root and the majority of the hypocotyl approximately 3–5 mm below the cotyledonary-node after four days germination in germination medium (B5 salt/B5 vitamins, 30 g/L sucrose, 3 g/L phytagel, pH 5.8). The cotyledonary-nodes were wounded by making 10 slices with the blade perpendicular to the hypocotyls and inoculated in the 30 ml co-cultivation suspension for 30 min, and then transferred on co-cultivation medium (B5 salt (0.1x)/B5 vitamins, 30 g/L sucrose, 3 g/L phytagel, 3.9 g/L MES, 0.25 mg/L GA₃, 0.15 g/L Na-thiofate, 0.4 g/L L-cysteine, 0.15 g/L DL-dithiothreitol, 0.04 g/L Acetosyringone, pH 5.4) as abaxial side down under dark condition. Three days later, the infected explants were briefly washed in washing medium, and

transferred to shoot inducing medium (B5 salt/B5 vitamins, 30 g/L sucrose, 3 g/L phytagel, 0.59 g/L MES, 1.67 mg/L 6-BA, 100 mg/L Timentin, 200 mg/L Cefotaxime, 5 mg/L Glufosinate, pH 5.7) and shoot elongation medium (MS salt/MS vitamins, 30 g/L sucrose, 3 g/L phytagel, 0.59 g/L MES, 5 mg/L Asparagine, 5 mg/L Glutamine, 0.4 mg/L IAA, 0.5 mg/L GA₃, 1 mg/L Trans-Zeatin Riboside, 100 g/L Timentin, 200 mg/L Cefotaxime, 5 mg/L Glufosinate, pH 5.7), cultured for four weeks respectively. Elongated shoots were placed into rooting medium containing 0.5 mg/L IBA. Primary positive plants were screened with 135 mg/L Liberty (AgrEvo) [24], and identified by DNA and RNA analysis.

Exogenous GA₃ Treatment

Three-week-old transgenic soybean seedlings of T₃ generation were sprayed with a GA₃ solution of 0, 60, 144, or 288 μM (in 10% ethanol) once a week for three consecutive weeks or with a GA₃ solution of 60 μM (in 10% ethanol) three times in one week. The plants of wide type were treated with 10% ethanol as control. The plant height, leaf area and chlorophyll content were measured two weeks after the treatment.

Chlorophyll Content Measurement

The chlorophyll content of the first and second expanding trifoliates in transgenic and wide-type plants were measured by Portable chlorophyll content meter (SPAD-502, Spectrum Technologies, Inc), and each measurement repeated three times.

Gene Expression Analysis

The six-week-old soybean seedlings of transgenic and wide type were extracted using Trizol reagent (Invitrogen). After RNase-free DNase (TaKaRa) treatment, approximately 1 μg total RNA was used for reverse transcription using the oligo (dT) primer and M-MLV (Invitrogen). qRT-PCR was performed using CFX96 (Bio-Rad, USA) and SYBR Green I (Bio-Rad, USA). Each of the cDNA samples was subjected to a real-time PCR analysis in triplicate. The data were normalized using the reference gene *β-tubulin*. The relative expressions of specific genes were quantified using the 2^{-ΔΔC_t} calculation. The primer pairs used for q-RT-PCR are listed in Table S1.

Quantification of Endogenous GAs

The transgenic and wide type soybean plants were grown in 1/2 Hoagland solution for four weeks in growth chamber under 28°C, 16-h light and 24°C, 8-h dark condition. Samples were taken from the top part of young plants including apex, young stem and young leaves. The GAs contents were determined by the method of capillary electrophoresis-time of flight-mass spectrometry described previously [25].

Results

Overexpression of the *Arabidopsis DREB1A* Gene in Soybean Caused Severe Dwarf Phenotype

The *Arabidopsis DREB1A* gene driven by the CaMV 35S promoter was transferred into the soybean plants using *Agrobacterium*-mediated transformation of the cotyledon node. Unexpectedly, during the transformation process, some elongated shoots showed abnormal phenotype with no obvious stems (Fig. S1). Consequently, these shoots were later identified as positive plants. A total of 12 T₀ lines were successfully regenerated. All the 35S::*AtDREB1A* transgenic plants exhibited severe dwarf phenotype (Fig. S2). Homozygous T₃ plants of two independent

transgenic lines of *AtDREB1A*-L1 and *AtDREB1A*-L2 were selected for further analysis. The transgenic lines were more tolerance to the herbicide treatment than that of wide type (Fig. 1A). Moreover, qRT-PCR analysis showed the *AtDREB1A* was transcriptionally expressed in transgenic lines. However, under the GA₃ treatment condition, its expression was decreased (Fig. 1B).

The *35S::AtDREB1A* transgenic plants exhibited a severe dwarf phenotype with no observable internodes (Fig. 2A). The average length of internodes was only 19.58% and 22.08% of those in wide type, respectively. The height of transgenic plants was decreased by 79.91% and 80.05% of those in wide type, respectively (Table 1). The leaf area and color from the 1st trifoliolate to 4th trifoliolate were smaller and darker than those of wide-type (Fig. 2B, 2D, 2E). The chlorophyll contents of the 1st and 2nd trifoliolate were 1.1-fold and 1.5-fold higher in transgenic plants than those of control plants (Fig. 2E). In addition, the transgenic plants showed the phenotypes of late flowering and podding. The flowering and podding stage were longer more than 20 days and 40 days than those of wide type, respectively (Table 1, Fig. S3). Furthermore, the transgenic seeds were much smaller in size with the grain weight only about 51.5% and 55.2% of those of wild type (Fig. 2C, Table 1).

The Dwarf Phenotype of Transgenic Soybean were Rescued by the Application of Exogenous GA₃

Overexpression of *AtDREB1A* caused dwarfism, dark-green leaves and late flowering, which resembles the previously identified typical phenotypes of GA-deficiency mutants [13]. This suggested that the phenotypic changes of *AtDREB1A*-overexpression plants were caused by GA₃ deficiency. Application of GA₃ at concentration of 144 μM once a week for three consecutive weeks rescued the dwarf phenotype in transgenic plants (Fig. 3). In addition, when application of GA₃ at concentration of 60 μM and increased frequency to three times in one week, the plant height of transgenic plants also be rescued and even much taller than that of plants under 144 μM GA₃ treatment and wide type (Fig. S4). The leaf area of was partly rescued and chlorophyll contents was fully rescued after GA₃ treatment in transgenic plants (data not shown). However, the flowering time was didn't rescued (data not shown).

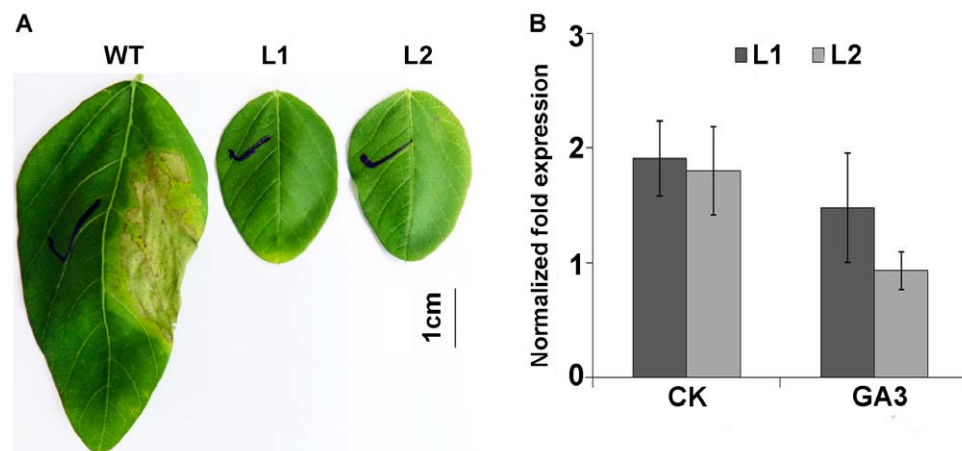


Figure 1. Herbicide tolerance and qRT-PCR analysis of transgenic plants. A: Detection of herbicide tolerance on *AtDREB1A*-transformed plants. B: Expression analysis of the *AtDREB1A* gene in transgenic plants. Data represents six biological replications, and error bars represent SE. WT, wide type; L1: *AtDREB1A* transgenic line 1; L2: *AtDREB1A* transgenic line 2; CK: control check, without GA₃ treatment; GA₃: 144 μM GA₃ treatment. doi:10.1371/journal.pone.0045568.g001

Table 1. Characterization of transgenic and WT soybean plants.

Traits	WT	L1	L2
Plant height (cm)	35.00±2.36A	7.03±0.58B	6.98±0.34B
Average length of Internodes (cm)	2.40±0.20A	0.47±0.03B	0.53±0.01B
Initial flower stage (day)	29.00±1.84A	52.00±2.06B	53.00±1.72B
Initial pod stage (day)	44.00±1.12A	90.00±1.68B	91.00±1.02B
Grain weight(g/100 grains)	30.43±0.26A	8.63±0.20B	3.35±0.26B

Values are the mean of ten biological replicates ± SE, the same letter indicates no significant difference and different letters are significantly different by the analysis of variance (ANOVA), $p < 0.01$. WT: wide type; L1: *AtDREB1A* transgenic line 1; L2: *AtDREB1A* transgenic line 2. doi:10.1371/journal.pone.0045568.t001

The Expression of GA Biosyntheses Genes were Changed in the Overexpression of *AtDREB1A* Soybean Plants

The GA-20 oxidase, GA-3-β-hydroxylase and GA-2 oxidase are critical enzymes in GA biosyntheses. Quantitative RT-PCR analysis was performed to investigate these genes expression level in transgenic plants. Due to the tissue specific expression pattern among members, only *GmGA20ox5*, *GmGA3ox6* and six GA2-oxidase genes were detected. The result showed that the relative mRNA expression of *GmGA20ox5* and *GmGA3ox6* were dramatically increased in two transgenic lines compared with those of wild-type plants (Fig. 4). While the mRNA level of GA2-oxidase genes of *GmGA2ox1*, *GmGA2ox2*, *GmGA2ox6*, *GmGA2ox7* and *GmGA2ox8* were down regulated in transgenic lines (Fig. 4). However, the transcriptional expression of another GA2-oxidase gene, *GmGA2ox4*, was significantly up-regulated in transgenic plants compared to that of wide type (Fig. 4).

Overexpression of *AtDREB1A* Reduced the Bioactive GAs

Regarding the data above, we propose that the GA biosynthesis was interfered by overexpression of *AtDREB1A* through regulating the GA synthase genes, especially for activating the expression of *GmGA2ox4*, which could decrease the bioactive level in transgenic soybean plants. Thus, the endogenous GAs content were examined using collected samples of apex, young leaves and stem

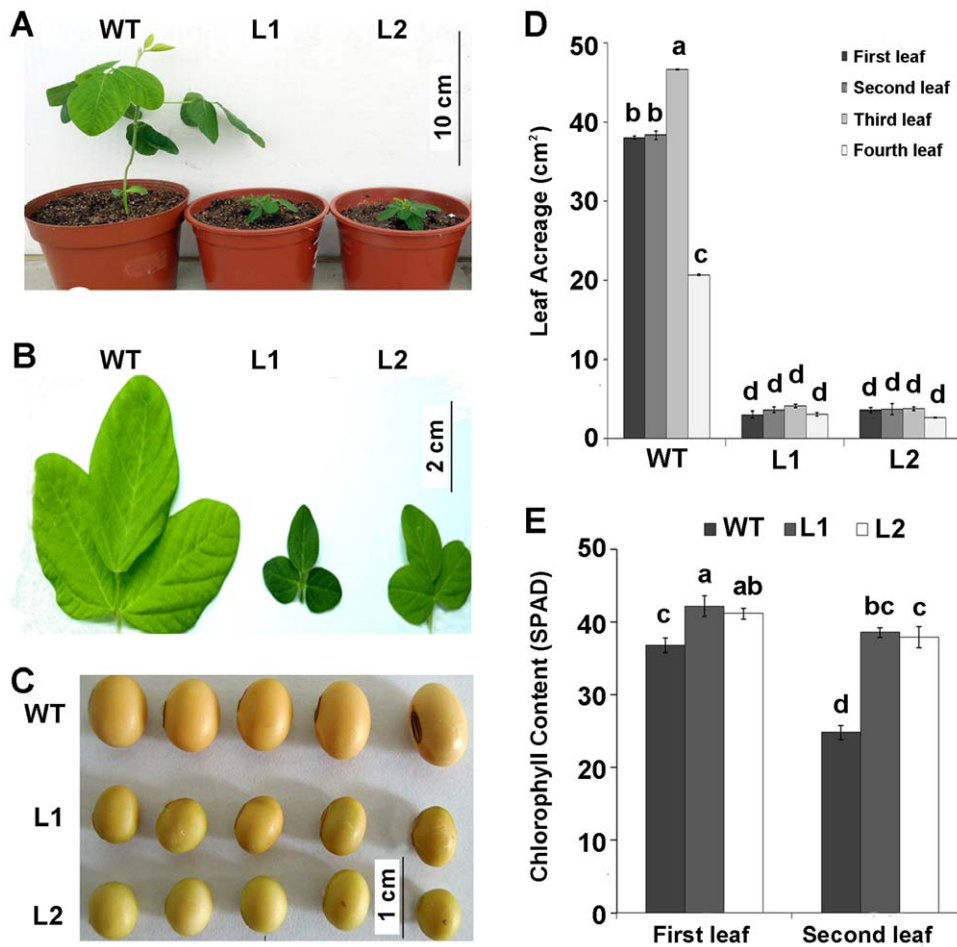


Figure 2. Phenotypes of *AtDREB1A*-overexpressing soybean plants. A: Phenotypes of 3-week-old T_3 transgenic and WT soybean plants. B: Leaf phenotype of 3-week-old T_3 transgenic and WT soybean plants. C: Seeds of transgenic and WT soybean plants. D: The first to fourth leaf acreage of 3-week-old transgenic and WT soybean plants. E: The chlorophyll content of first and second leaf in transgenic and WT soybean plants. WT: wide type; L1: *AtDREB1A* transgenic line 1; L2: *AtDREB1A* transgenic line 2. Values are the mean of six biological replicates \pm SE, the same letter on each column set indicates no significant difference and different letters are significantly different by the analysis of variance (ANOVA), $p < 0.05$. doi:10.1371/journal.pone.0045568.g002

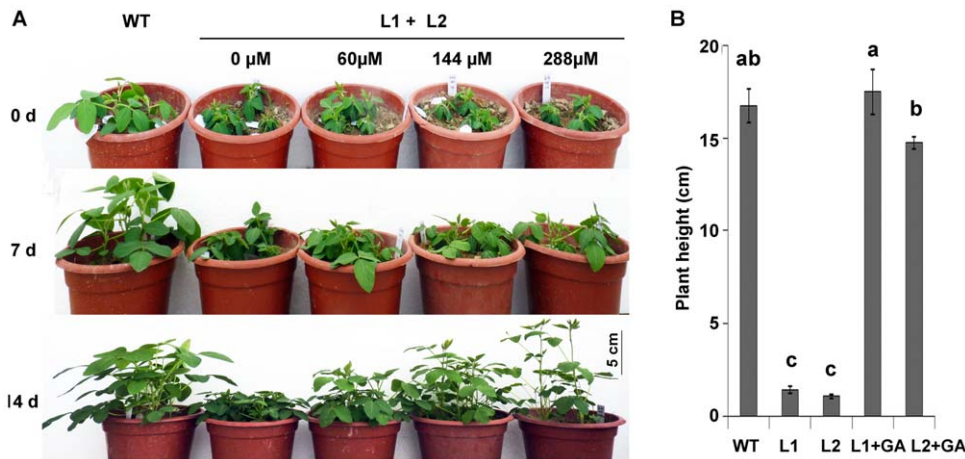


Figure 3. Effects of GA_3 on phenotypic restoration. A: Phenotypes of transgenic plants under 0 μM , 60 μM , 144 μM or 288 μM GA_3 treatments for 7 days and 14 days. B: The plant height of eight weeks of WT and transgenic plants after treated with or without 144 μM GA_3 for two weeks. WT: wide type; L1: *AtDREB1A* transgenic line 1; L2: *AtDREB1A* transgenic line 2; L1+L2: *AtDREB1A* transgenic plants line1 and 2. Values are the mean of six biological replicates \pm SE, the same letter on each column set indicates no significant difference and different letters are significantly different by the analysis of variance (ANOVA), $p < 0.05$. doi:10.1371/journal.pone.0045568.g003

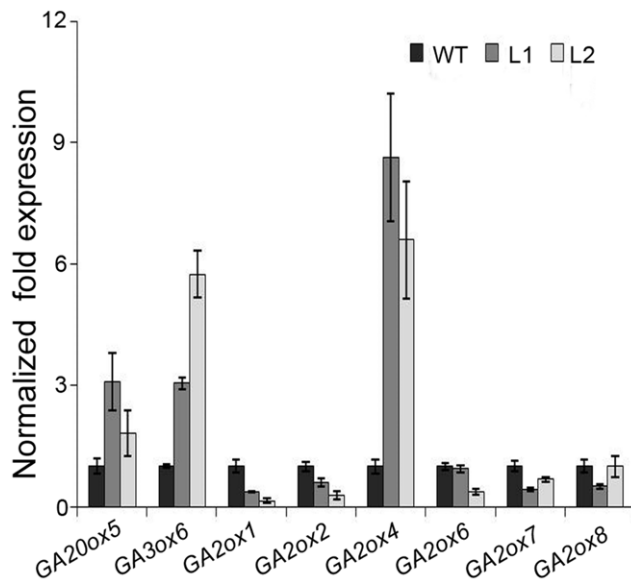


Figure 4. Expression levels of GA metabolism related genes. β -Tubulin was used as an internal control. GA20ox5: *GmGA20ox5* (Glyma13g09460); GA3ox6: *GmGA3ox6* (Glyma17g30800); GA2ox1: *GmGA2ox1* (Glyma02g01330); GA2ox2: *GmGA2ox2* (Glyma10g01380); GA2ox4: *GmGA2ox4* (Glyma11g00550); GA2ox6: *GmGA2ox6* (Glyma13g33290); GA2ox7: *GmGA2ox7* (Glyma13g33300); GA2ox8: *GmGA2ox8* (Glyma15g10070). Values are the mean of four biological replicates \pm SE. doi:10.1371/journal.pone.0045568.g004

of transgenic and wide type soybean seedlings after hydroponic cultivation for four weeks. Table 2 showed that the concentration of the bioactive GA₁ in transgenic plants was reduced by 74.41% compared with that of wide type, and the concentration of bioactive GA₄ was even not detected. It demonstrated that *AtDREB1A* transgenic plants are similar to GA deficient mutants. The contents of intermediates (GA₁₉) and producers (GA₉ and GA₂₀) of GA20ox were decreased to 13.94%, 28.01% and 24.58% of wide type in transgenic plants, respectively. Based on this observation, we speculated that GA20-oxidation might be partly impaired in transgenic plants, which was consistent with previous report [14]. Furthermore, some C₂₀-GAs (GA₁₂, GA₅₃ and GA₂₄) in transgenic plants accumulated at lower levels below the limit of detection compared with those of wide type. Taken together, these results indicate that the deficiency of bioactive GAs in transgenic soybean plants is mainly because of the inhibition of stepwise oxidation catalyzed by C₂₀-GA2ox.

Discussion

In this study, we demonstrated that overexpression *AtDREB1A* in soybean caused a dwarfism phenotype, probably by the up-regulation of the *GmGA2ox4* gene, which resulted in decreasing levels of active GAs and conferred dwarfism phenotypes. Overexpression of *AtDREB1A* transcription factor in soybean caused dwarfism (Fig. 2, Table 1). Similar phenomena was also found when DREB members were overexpressed in other plant species, such as *Arabidopsis* [12,13], *tobacco* [18,19] and *chrysanthemum* [20]. The dwarfism caused by overexpression of *DREB1B* and *DREB1F* in *Arabidopsis* can be reversed by exogenous GA₃ treatment [14,16,17]. However, the dwarfism caused by overexpression of *DREB1A* in *Arabidopsis* and *tobacco* cannot be reversed by GA treatment [15,18,19]. In this research, exogenous GA₃ treatment

Table 2. The bioactive GAs contents in transgenic and WT plants.

GAs	WT	L1
Non-13-hydroxylated		
GA12	0.39 \pm 0.08	ND
GA24	1.39 \pm 0.17	ND
GA9	7.10 \pm 0.29	0.99 \pm 0.12
GA4	5.00 \pm 0.15	ND
13-Hydroxylated		
GA53	0.61 \pm 0.10	ND
GA19	5.64 \pm 0.23	1.58 \pm 0.19
GA20	4.12 \pm 0.48	0.24 \pm 0.08
GA1	6.55 \pm 0.33	1.61 \pm 0.14

3-week-old soybean seedlings of transgenic and wide type were sampled for GA content measurement. WT: wide type; L1: *AtDREB1A* transgenic line 1. All values are ng/g fresh weight, data represents four biological replicates. ND, not detectable.

doi:10.1371/journal.pone.0045568.t002

restored the plant height (Fig. 3, Fig. S4). This suggested that the different DREB-like transcription factors or the same DREB transcription factors but in different transgenic plant backgrounds may contribute to plant growth differentially [26].

We detected the expression of GA-20-oxidase and GA-3-oxidase genes which involve in GA biosyntheses and GA2-oxidase which convert bioactive GAs into deactivated forms [27]. In contrast, the transcripts of *GmGA20ox5* and *GmGA3ox6* were both up-regulated in transgenic soybean plants compared with that in wide type (Fig. 4). It seems that the inhibition of GA biosynthesis does not account for the transcriptional repression of GA-20-oxidase or GA-3-oxidase genes. Similarly, previous studies found that the expression of *AtGA20ox1*, *AtGA20ox2*, *AtGA20ox3* and *AtGA3ox1* were up-regulated in *35S::DREB1F* dwarf plants [14]. Meanwhile, the expression of *Gh20ox1-4*, *Gh3ox1* and *Gh3ox2* were also increased in *35S::GhDREB1 Arabidopsis* [28]. In addition, the up-regulation of GA-20-oxidase and GA-3-oxidase genes has been reported in GA-deficient and GA-insensitive mutants [4,29]. These suggested that the up-regulation of *GmGA20ox5* and *GmGA3ox6* in *35S::DREB1A* soybean plants may due to the negative feedback regulation of endogenous GAs levels. However, the transcriptional expression of one GA deactivating gene of *GmGA2ox4* was up-regulated, while the transcriptional expression of other GA deactivating genes were down-regulated compared to those of wide type (Fig. 4). Previous study predicted that *GmGA2ox4* only hydroxylates C₂₀-GA rather than the C₁₉-GA substrates in soybean, which is clustered into the same subgroup of C₂₀ GA2ox with *spinach GA2ox3*, *AtGA2ox7*, *AtGA2ox8*, and *OsGA2ox4,-5,-6* [5,27]. Amino acid sequence alignment showed that *GmGA2ox4* was closed to *AtGA2ox7* and *AtGA2ox8* than any other GA-2 oxidase in soybean and has the conserved motifs for binding GAs and other common cofactors (Fig. S5). However, a unique region (at the positions 115 to 143 of *AtGA2ox8*) in C₂₀-GA subgroup may define the specificity of the reactions performed by these enzymes. It has been reported that overexpression of *AtGA2ox7* and *AtGA2ox8* decreased the levels of active GAs and conferred dwarf phenotypes both in *Arabidopsis* and *tobacco* [7]. Consistent with this observation, homologous and heterologous over-expression of rice *GA2ox5* and *GA2ox6* resulted in typical GA-deficient dwarfism [9]. Similarly, transgenic tobacco of over-

expression of *spinach GA2ox3* showed dwarf phenotype [27]. In this research, overexpression of *AtDREB1A* in soybean increased expression level of *GmGA2ox4*, resulted in typical GA-deficient dwarfism and decreased the active GAs levels (GA₁ and GA₄). What's more, the bioactive levels of C₂₀-GAs (GA₁₂, GA₅₃ and GA₂₄) in transgenic plants were lower than limit of detection (Table 2). Recently reports showed that *GA2ox7* and *GA2ox8* in *Arabidopsis* and *GA2ox3* in *spinach* hydroxylate C₂₀-GA precursors (GA₁₂ and GA₅₃) [7,15,27]. In addition, GA₂₄ could metabolize by *GA2ox7* in *vitro*, suggesting GA₂₄ is another substrate of *GA2ox7* [15]. Therefore, we tentatively propose that GA₁₂, GA₅₃ and GA₂₄ were substrates of *GmGA2ox4* in soybean and C₂₀-GA oxidation plays an important role in resulting GA deficiency in transgenic soybean plants.

Overexpression of *AtDREB1A* modulates plant growth through regulating C₂₀-GA deactivation genes with a similar mechanism as found in other plants. In *35S::DDF1* transgenic plants, the expression of *AtGA2ox7* were dramatically increased (223-fold) compared to control plants [15]. DDF1 protein can bind to DRE-L motifs in the *GA2ox7* promoter, suggesting that *GA2ox7* is a direct target of DDF1 transcriptional activator [15]. In addition, the expression of *GA2ox3* was up-regulated in CBF1 overexpression plant while there is no CRT/DRE-like *cis*-element in the promoter region of *GA2ox3*, implying that CBF1 up-regulated *GA2ox3* gene expression indirectly [16]. In this study, no CRT/DRE-like *cis*-element was found in the promoter region of *GmGA2ox4*. Alternatively, there exist two ERE (ethylene-responsive element) elements with a core sequence of AGCCGCC, and some DREBs such as TINY2, BnDREBIII-1 and CBF1/DREB1B were demonstrated to bind to ERE element [30–32]. However, CBF2/DREB1C and CBF3/DREB1A have been demonstrated without binding to ERE due to 15th-Cys other than Ser like in TINY, TINY2, BnDREBIII-1, which is crucial for the specific binding of ERE element [33]. Therefore, the results suggested that *AtDREB1A* regulates *GmGA2ox4* gene expression through an indirectly way.

It was widely reported that overexpressing DREBs in plants increased the transgenic plants tolerance to abiotic stresses [12–20]. It was reported that soybean lines transformed with an *rd29A::AtDREB1A* construct improved the tolerance to drought [34], suggesting that *AtDREB1A* is involved in stress tolerance in soybean. In this study we demonstrated that overexpression of *AtDREB1A* gene up-regulated the expression of the only C₂₀-GA-oxidase *GmGA2ox4*, which decrease the active GAs and corresponding for dwarf phenotype in soybean.

Taken together, we showed that overexpression *AtDREB1A* in soybean could result in a typical phenotype of GA-deficient mutants including severe dwarfism, small and dark-green leaves, and late flowering in transgenic plants. The dwarfism phenotype could be rescued by the application of exogenous GA₃ with the concentrations of 60 μM or 144 μM. The dwarfism of *35S::AtDREB1A* reveals *AtDREB1A* can mediate GA metabolism and regulate some GA-responsive genes involved in the GA synthase genes and GA deactivated genes, which were further confirmed by the contents of endogenous bioactive GAs. The gained information suggested that *AtDREB1A* causes soybean dwarfism mediated by GA biosynthesis pathway.

References

- Fleet MC, Sun PT (2005) A DELLA cate balance: the role of gibberellins in plant morphogenesis. *Curr Opin Plant Biol* 8: 77–85.
- Hedden P, Phillips AL (2000) Gibberellin metabolism: New insights revealed by the genes. *Trends Plant Sci* 5: 523–530.
- Chiang HH, Hwang I, Goodman HM (1995) Isolation of the *Arabidopsis GA4* locus. *Plant cell* 7: 195–201.
- Cowling RJ, Kamiya Y, Seto H, Harberd NP (1998) Gibberellin dose response regulation of *GA4* gene transcript levels in *Arabidopsis*. *Plant Physiol* 117: 1195–1203.
- Han FM, Zhu B (2011) Evolutionary analysis of three gibberellin oxidase genes in rice, *Arabidopsis* and soybean. *Gene* 473: 43–35.

Supporting Information

Figure S1 The phenotype of transgenic and wide-type shoots during the period of tissue culture. A: wild type; B: regenerate shoots. (TIF)

Figure S2 The phenotypes of transgenic plants after transferred into pots. A: wide type; B–H: transgenic plants. (TIF)

Figure S3 The phenotypes of transgenic plants during the growth and development. A, E and I: wild type at vegetable stage, flowering and podding stage. C, G and K are the magnified pictures of wild type plants corresponding to A, E and I, respectively. B, F and J: *AtDREB1A* transgenic plants at vegetable, flowering and podding stage. D, H and L are the magnified pictures taken from the top of *AtDREB1A* transgenic plants corresponding to B, F and J, respectively. (TIF)

Figure S4 Effects of GA₃ on phenotypic restoration. A: Phenotypes of transgenic plants under 60 μM and 144 μM GA₃ treatments. B: The plant height of transgenic and WT soybean plants after treated with or without GA₃ treatment for two weeks. WT: wide type; L1: *AtDREB1A*-transgenic line 1; L2: *AtDREB1A* transgenic line 2; Values are the mean of six biological replicates ± SE, the same letter on each column set indicates no significant difference and different letters are significantly different by the analysis of variance (ANOVA), p<0.05. (TIF)

Figure S5 Sequence alignment of predicted proteins of C₂₀-oxidase group. Black shading indicates identical amino acid residues, and gray shading indicates similar residues. GenBank accession numbers of proteins are (in parentheses): *AtGA2ox7* (At1g50960), *AtGA2ox8* (At4g21200), *OsGA2ox5* (Os07g01340), *OsGA2ox6* (Os04g44150), *SoGA2ox3* (AAX14674), *OsGA2ox9* (Os02g41954), *GmGA2ox4* (Glyma11g00550). (TIF)

Table S1 Primers used for real-time quantitative RT-PCR. (TIF)

Acknowledgments

We thank Yingxiang Wang (College of Life Sciences, Fudan University) for his critical comment on this manuscript. We are grateful to Ms. Ze Jiang and Wenshan Zhang (College of Agriculture, South China Agricultural University) for performing the *Agrobacterium*-mediated soybean transformation and Prof. Guiquan Zhang (College of Agriculture, South China Agricultural University) for his help with the equipment.

Author Contributions

Conceived and designed the experiments: HCS QBM KXY. Performed the experiments: HCS QBM KXY MLC YQF. Analyzed the data: HCS QBM. Contributed reagents/materials/analysis tools: CYY QBM. Wrote the paper: HCS HN QBM ZYJZ CYY. Soybean transformation and gained the soybean transgenic lines: HCS KXY YJT JH.

6. Rieu I, Eriksson S, Powers SJ, Gong F, Griffiths J, et al. (2008) Genetic analysis reveals that C19-GA2-oxidation is a major gibberellins inactivation pathway in *Arabidopsis*. *Plant cell* 20: 2420–2436.
7. Schombury F, Bizzell C, Lee D, Zeevaar J, Amasino R (2003) Overexpression of a novel class of gibberellin 2-oxidases decreases gibberellin levels and creates dwarf plants. *Plant cell* 15: 151–163.
8. Huang J, Tang D, Shen Y, Qin BX, Hong L, et al. (2010) Activation of gibberellin 2-oxidase 6 decreases active gibberellins levels and creates a dominant semi-dwarf phenotype in rice (*Oryza sativa*L.). *J Genet Genomics* 37: 23–36.
9. Lo SF, Yang SY, Chen KT, Hsing YL, Zeevaar JAD, et al. (2008) A novel class of gibberellins 2-oxidases control semidwarfism, tillering, and root development in rice. *Plant cell* 20: 2603–2618.
10. Stockinger EJ, Gilmour SJ, Thomashow M (1997) *Arabidopsis thaliana* CBF1 encodes an AP2 domain-containing transcriptional activator that binds to the C-repeat/DRE, a cis-acting DNA regulatory element that stimulates transcription in response to low temperature and water deficit. *Proc Natl Acad Sci USA* 94: 1035–1040.
11. Liu Q, Kasuga M, Sakuma Y, Abe H, Miura S, et al. (1998) Two transcription factors, DREB1 and DREB2, with an EREBP/AP2 DNA binding domain, separate two cellular signal transduction pathways in drought and low temperature-responsive gene expression, respectively, in *Arabidopsis*. *Plant Cell* 10: 1391–1406.
12. Kasuga M, Liu Q, Miura S, Yamaguchi-Shinozaki K, Shinozaki K (1999) Improving plant drought, salt, and freezing tolerance by gene transfer of a single stress-inducible transcription factor. *Nat Biotechnol* 17: 287–291.
13. Koornneef M, Veen JVD (1980) Induction and analysis of gibberellin sensitive mutants. *Theor Appl Genet* 58: 257–263.
14. Magome H, Yamaguchi S, Hanada A, Kamiya YJ, Oda K (2004) Dwarf and delayed flowering 1, a novel *Arabidopsis* mutant deficient in gibberellin biosynthesis because of over expression of a putative AP2 transcription factor. *Plant J* 37: 720–729.
15. Magome H, Yamaguchi S, Hanada A, Kamiya YJ, Oda K (2008) The DDF1 transcriptional activator upregulates expression of a gibberellin-deactivating gene, *GA2ox7*, under high-salinity stress in *Arabidopsis*. *Plant J* 56: 613–626.
16. Achard P, Gong F, Cheminant S, Alioua M, Hedden P, et al. (2008) The cold-inducible CBF1 factor-dependent signaling pathway modulates the accumulation of the growth-repressing DELLA proteins via its effect on gibberellin metabolism. *Plant Cell* 20: 2117–2129.
17. Hsieh TH, Lee JT, Charng YY, Chan M (2002) Tomato plants ectopically expressing *Arabidopsis* CBF1 show enhanced resistance to water deficit stress. *Plant Physiol* 130: 618–626.
18. Kasuga M, Miura S, Shinozaki K, Yamaguchi-Shinozaki K (2004) A combination of the *Arabidopsis* DREB1A gene and stress-inducible *rd29A* promoter improved drought- and low-temperature stress tolerance in tobacco by gene transfer. *Plant Cell Physiol* 45: 346–350.
19. Cong L, Zheng HC, Zhang YX, Chai T (2008) *Arabidopsis* DREB1A confers high salinity tolerance and regulates the expression of GA dioxygenases in tobacco. *Plant Sci* 174: 156–164.
20. Hong B, Tong Z, Ma N, Li JK, Kasuga M, et al. (2006) Heterologous expression of the *AtDREB1A* gene in *chrysanthemum* increases drought and salt stress tolerance. *Sci China Ser C* 46: 436–445.
21. An G, Ebert PR, Mitra A, Ha S (1988) Binary Vectors. In: Gelvin SB, Schilperoort RA, Verma DSP(eds): Kluwer, Dordrecht. 1–19.
22. Di R, Purcell V, Collins G (1996) Production of transgenic soybean lines expressing the bean pod mottle virus coat protein precursor gene. *Plant Cell Rep* 15: 746–750.
23. Zeng P, Vadnais D, Zhang Z, Polacco JC (2004) Refined glufosinate selection in *Agrobacterium*-mediated transformation of soybean [*Glycine max* (L.) Merr.]. *Plant Cell Rep* 22: 478–482.
24. Paz MM, Shou H, Guo Z, Zhang Z, Banerjee AK, et al. (2004) Assessment of conditions affecting *Agrobacterium*-mediated soybean transformation using the cotyledonary node explants. *Euphytica* 136: 167–179.
25. Chen ML, Huang YQ, Liu JQ, Yuan BF, Feng Y (2011) Highly sensitive profiling assay of acidic plant hormones using a novel mass probe by capillary electrophoresis-time of flight-mass spectrometry. *J Chromatogr B* 879: 938–944.
26. Zhou M, Ma J, Pang J, Zhang Z, Tang Y, et al. (2010) Regulation of plant stress response by dehydration responsive element binding (DREB) transcription factors. *Afr J Biotechnol* 9: 9255–9279.
27. Lee DJ, Zeevaar J (2005) Molecular cloning of GA2-oxidase3 from spinach and its ectopic expression in *Nicotiana sylvestris*. *Plant Physiol* 138: 243–254.
28. Huang JG, Yang M, Liu P, Yang GD, Wu CA, et al. (2009) *GhDREB1* enhances abiotic stress tolerance, delays GA-mediated development and represses cytokinin signalling in transgenic *Arabidopsis*. *Plant Cell and Environ* 32: 1132–1145.
29. Xu YL, Li L, Wu K, Peeters AJ, Gage DA, et al. (1995) The *GA₂* locus of *Arabidopsis thaliana* encodes a multifunctional gibberellin 20-oxidase: molecular cloning and functional expression. *Proc Natl Acad Sci USA* 92: 6640–6644.
30. Hao D, Yamasaki K, Sarai A, Ohme-Takagi M (2002) Determinants in the sequence specific binding of two plant transcription factors, CBF1 and NtERF2, to the DRE and GCC Motifs. *Biochem* 41: 4202–4208.
31. Wei G, Pan Y, Lei J, Zhu Y (2005) Molecular cloning, phylogenetic analysis, expression profiling and in vitro studies of *TINY2* from *Arabidopsis thaliana*. *J Biochem Mol Biol* 38: 440–446.
32. Liu Y, Zhao TJ, Liu JM, Liu WQ, Liu Q, et al. (2006) The conserved Ala37 in the ERF/AP2 domain is essential for binding with the DRE element and the GCC box. *FEBS Lett* 580: 1303–1308.
33. Sun S, Yu JP, Chen F, Zhao TJ, Fang XH, et al. (2008) TINY, a dehydration-responsive element (DRE)-binding protein-like transcription factor connecting the DRE and methylene-responsive element-mediated signaling pathways in *Arabidopsis*. *J Biol Chem* 283: 6261–6271.
34. Polize IAM, Medri ME, Nakashima K, Yamanaka N, Farias JRB, et al. (2011) Molecular, anatomical and physiological properties of a genetically modified soybean line transformed with *rd29A:AtDREB1A* for the improvement of drought tolerance. *Genet Mol Res* 10: 3641–3656.