

Review article:

THREE DIMENSIONAL ELECTRON MICROSCOPY AND *IN SILICO* TOOLS FOR MACROMOLECULAR STRUCTURE DETERMINATION

Subhomoi Borkotoky, Chetan Kumar Meena, Mohammad Wahab Khan, Ayaluru Murali*

Centre for Bioinformatics, School of Life Sciences, Pondicherry University,
Puducherry-605014, India

* Corresponding author: Dr. A. Murali, Centre for Bioinformatics, School of Life Sciences,
Pondicherry University, Puducherry-605014, India; E-Mail - murali@bicpu.edu.in

ABSTRACT

Recently, structural biology witnessed a major tool – electron microscopy – in solving the structures of macromolecules in addition to the conventional techniques, X-ray crystallography and nuclear magnetic resonance (NMR). Three dimensional transmission electron microscopy (3DTEM) is one of the most sophisticated techniques for structure determination of molecular machines. Known to give the 3-dimensional structures in its native form with literally no upper limit on size of the macromolecule, this tool does not need the crystallization of the protein. Combining the 3DTEM data with *in silico* tools, one can have better refined structure of a desired complex. In this review we are discussing about the recent advancements in three dimensional electron microscopy and tools associated with it.

Keywords: cryo-EM, single particle analysis, CTF correction, segmentation

INTRODUCTION

Recent past witnessed the emergence of new tool in structural biology in the form of electron microscopy and single particle analysis. It complemented the currently existing tools namely, X-ray crystallography and nuclear magnetic resonance (NMR). This tool has several advantages over the conventional structural biology tools (X-ray crystallography and NMR) such as, structure elucidation without crystallization, solving the structure in physiological conditions, and with literally no upper limit on size of the protein. Though greater purity is of high demand, this technique needs low concentrations of the protein (typically of the order of 1 ng/ μ l for a protein of ~100 kDa molecular weight for negative stain). However, despite of proving its ability in all corners of structural biology, three dimensional transmission electron micros-

copy (3DTEM) has relatively fewer entries in RCSB compared to deposits from crystallography and NMR. The present review article was taken up to give an outline of the single particle analysis with few examples where 3DTEM was found to be unique. Also this review article presents a brief account on other promising online and offline tools that will complement the 3DTEM technique.

As per advancements of more sophisticated instruments and *in silico* tools over recent years, electron microscopy is getting a greater push to the arena of solving molecular structures, along with other methods like X-ray crystallography and nuclear magnetic resonance (NMR). As compared to the prominent structure exploration methods like X-ray crystallography and NMR, 3DTEM techniques are the structural biologists' best choice for larger macromo-

lecular assemblies (having molecular weights greater than 60 kDa) and other larger cellular components. There is no need for growing 2D crystals for 3DTEM methods; it mainly relies on the symmetry properties of particle (Jonic et al., 2008). The increase in the number of electron microscopy (EM) solved structures is evident from the collaboration of the ftp archives of Protein Data Bank (PDB) and EM Data Bank (EMDB) to facilitate user access to EM maps and models (Berman et al., 2013). According to EM databank statistics, 1749 entries were deposited in its database (<http://www.emdatabank.org/recententries.html>) till February, 2013 and with a gradual increase in data submission in EMDB in the last five years (Figure 1).

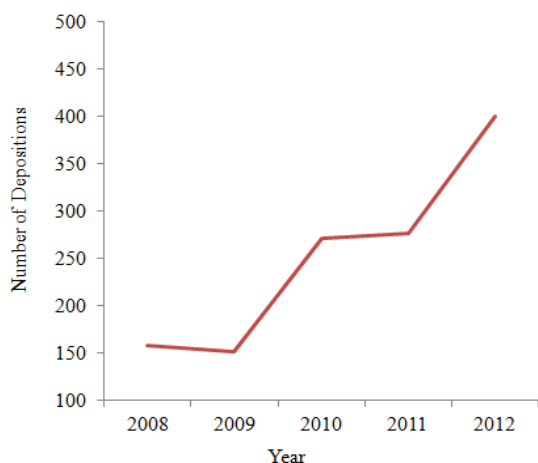


Figure 1: Deposition of EM Structures in EMDB in last five years

Since the electron microscopy technique is a classic technique and known to scientists in all branches of life sciences, a huge collection of literature exists and it is not possible to include all of it. We focus on single particle analysis (SPA) – a tool that works with electron microscopy, which has laid its foundation in 1970s and started gaining the attention of more researchers since 1995 (Frank, 2009). In view of the space restriction, the present review considers only the developments in the recent years. Readers might refer to the earlier reviews that appeared on similar topics for complete coverage of the literature on this

subject (Jiang and Ludtke, 2005; Llorca, 2005; Ruprecht and Nield, 2001).

The present review mainly focuses on the specimen preparation approaches for electron microscopy with an introduction of single particle analysis, some important tools that are available to complement the 3DTEM and concludes with some notable reports to prove the uniqueness of 3DTEM.

Specimen preparation methods for electron microscopy

The most commonly used staining methods in electron microscopy are negative staining, CryoEM and Cryo-negative staining. Each of these three methods plays a considerable role in resolution of the data and contrast of the images. A detailed account of these methods is listed below.

Negative staining

Among all the staining methods available, negative staining (NS) is the simplest one. First reported in 1959 (Brenner and Horne), it was revisited by several researchers. Generally, the aqueous solutions of heavy metal salts are used as stains which make the sample to appear darker than the background, so the term “negative staining” is attributed to this process. Most commonly used negative stain is uranyl acetate which gives high contrast. The other compounds that are in use are sodium/potassium phosphotungstate, uranyl formate, ammonium molybdate (Bremer et al., 1992), as well as patented stains, such as NanoVan® and NanoW® (Hainfeld et al., 1994). Negative staining can reveal the true solvent-excluded surface and shape of a biological molecule. Proper identification of intra-molecular information by negative staining, such as alpha-helices and/or beta-sheets are quite theoretical, which relies upon the relatively large mass-thickness difference between the biological material and the surrounding stain (De Carlo and Harris, 2011). The high vacuum that is required to be maintained in a typical TEM column can deform the biological samples

by collapsing/flattening effect which is mainly due to the vacuum drying.

Cryo-freezing

It is well known that the negative staining approach always results in a low resolution data (typically of the order of 1.5 – 2 nm). CryoEM (also known as Cryo-freezing) is an alternative where the nativity of the macromolecule is preserved and considerably high resolution is achieved. Also, Cryo-freezing eliminates many of the artifacts that may disturb the structural integrity of the biological macromolecules. It allows vitrification of biological samples in their native state and the freezing process is done so rapidly that no ice crystals will be formed during the sample preparation (Dubochet et al., 1982). There are different methods of preparing frozen, hydrated biological specimens such as – sandwich between folding grids, sandwich between two carbon films, sandwich between pretreated behenic acid film and poly lysine coated film, sandwich between grids of different meshes (Jaffe and Glaeser, 1984; Talmon et al., 1979; Taylor and Glaeser, 1973) in which manual freezing is done at pretreated carbon films in liquid nitrogen. Other methods like thin film freezing (Adrian et al., 1984) use pretreated carbon films or holey grids for support and liquid ethane as coolant. This approach is known to give higher resolution structural details but suffers from poor contrast and high radiation damage. The poor contrast that is inherent in the cryoEM sets a lower limit (of about 200 kDa) on the protein size.

However, there are some attempts to work-around by generating focal pairs (Ludtke and Chiu, 2003). In this approach, two micrographs were taken for the same image – one with true focus (poor or no contrast) and one with greater defocus (having better contrast with almost loss of resolution of the image). The images from the true focus, as identified by transferring the coordinates of the images from micrographs of greater defocus, will be used for analysis.

Cryo-negative staining

Cryo-negative staining combines the advantages of both negative staining and cryo-EM. It uses stains like ammonium molybdate just before vitrification (Adrian et al., 1998). It has many advantages over traditional techniques such as better signal to noise ratio, better stability of the specimen, rapid collection and analysis of images, reduced radiation damage and lower range of sample size. Recent studies on Limulus SAP-like pentraxin (Shrive et al., 2009) and human Pol II complex (Kassube et al., 2012) uses the cryo-negative staining approach and reported structures to the tune of 14 Å and 25 Å resolution respectively. There are however, some limitations of cryo-negative staining. Few biological assemblies may show sensitivity to the saturated stain, or it may overemphasize the contrast of low-resolution features (De Carlo et al., 2002; Jawhari et al., 2006).

Single particle analysis

Single particle analysis (SPA) is one of the novel approaches for reconstructing theoretical models of large proteins and became popular in recent years. The term “single particles” refers to the unique views of the projection images that are isolated and unordered (Frank, 2002). The main aim of single particle reconstruction is to generate a 3D model from 2D images. The combination of SPA and EM is capable of revealing information related to conformational changes between various states (Rouiller et al., 2002), morphological characterization (Ludwig et al., 2003), DNA break repair (Spagnolo et al., 2006) etc. There is also evidence for combining nanotechnology and SPA to study important biological problems like self-assembly of virus-like particles (Sun et al., 2007), and the influence of charge and size variables on the templated assembly of virus capsids (Daniel et al., 2010).

The single particle reconstruction is an iterative process that can be divided into several common steps which include selection of individual projections of the parti-

cles from the electron micrograph, classification of particles with identical views and their alignment, orientation determination by comparing each particle to a set of reference projections, and finally reconstruction of an initial three dimensional model. The model thus generated in the first iteration (initial model or density map), can be used as a reference for the reconstruction process by repeating the above mentioned steps, until one gets a useful stable final model. Occasionally, one would also like to apply contrast transfer function (CTF) correction (see next section) in order to improve the resolution of the model. With the final model in hand, one can use various *in silico* tools for visualization and structure interpretation (Thuman-Commike, 2001). A graphical workflow of this process is given in Figure 2.

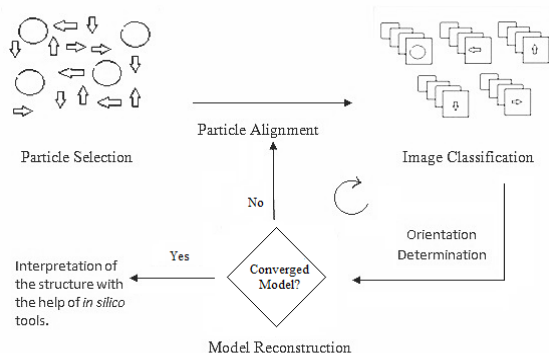


Figure 2: Major steps involved in single particle analysis

IN SILICO TOOLS FOR 3DTEM DATA ANALYSIS

In this section we will discuss some of the *in silico* tools and packages available for 3DTEM data analysis.

Tools for generating the electron density maps

Software packages available for single particle analysis are mainly EMAN1/EMAN2 (Ludtke et al., 1999), IMAGIC (van Heel et al., 1996), SPIDER (Frank et al., 1996), SPARX (Hohn et al., 2007), XMIPP an X-Window-based Microscopy Image Processing Package (Sorzano et al.,

2004), SUPRIM (Schroeter and Bretaudiere, 1996).

Apart from these, one can use the pipeline, APPION (Lander et al., 2009), which includes the packages ranging from single particle analysis, tomography to image analysis tools. Few of them are discussed below:

- *Single particle analysis* [EMAN, SPIDER, FREALIGN (Grigorieff, 2007), IMAGIC and XMIPP], and
- *Tomography* [IMOD (Kremer et al., 1996) and ProTomo (Winkler, 2007)].
- *Particle picker*: In general, one has to pick-up several thousands of well-isolated particles from electron micrographs for reconstruction purpose. Few automated tools such as FindEM (Roseman, 2004), DoGPicker and Tilt-Picker (Voss et al., 2009) are available which will be useful when handling a huge number of electron micrographs.
- *CTF correction*: Contrast transfer function (Yi et al., 2004), also known as CTF correction is an important step in the SPA that one has to pay attention to, in order to get a high resolution model. This becomes very important especially when one deals with CryoEM data. Tools such as ACE (Mallick et al., 2005), CTFFind and CTFTilt (Mindell and Grigorieff, 2003) are available for arriving at the right CTF.
- *Resolution measurement*: The most common practice for measurement of resolution of the refined model is 0.5 cut-off in the Fourier Shell correlation (FSC), meaning to take the point at which the FSC drops below 0.5 (Booth et al., 2004). Almost all major SPA packages listed above, including EMAN, provide inbuilt tools to generate these FSCs. Apart from these, Sousa and Grigorieff (2007) designed a novel tool – RMEASURE – to estimate the resolution of the refined maps by calculating the correlation between neighbouring pixels of the model in Fourier space.
- *Bfactor correction*: Bfactor, also known as temperature factor is another im-

portant parameter in context to protein structure as it indicates relative vibrational motion of different parts of the structure. EM-BFACTOR (Fernandez et al., 2008; Rosenthal and Henderson, 2003) is one of the tools that allows automatic determination of the Bfactor for maps at a resolution higher than 10 Å, and allows to sharpen the map and compensate the decay of the amplitudes.

A brief summary of these tools is given in Table 1.

Software/packages for working with the electron density maps generated by SPA

Having the model of a macromolecule (or macromolecular complex) successfully generated using SPA, one would like to work around the model in several aspects. For visualization of electron density maps one can use Chimera (Pettersen et al., 2004), Amira (Pruggnaller et al., 2008), Avizo (Westenberger, 2008), IMOD (Kremer et al., 1996) and VMD (Humphrey et al., 1996). Among these, Amira and Avizo are commercial packages.

At times one may have to deal with the density map of a macromolecule in its oligomeric form. In such case, segmentation of individual monomers is of utmost importance. Manual segmentation of density maps can be done with Amira, Avizo and Chimera, while automatic segmentation can be done with EMAN, CoDiv (Volkman, 2002), VolRover (Baker et al., 2006) and Segger (Pintilie et al., 2010) plug-in implemented with Chimera. Segmentation procedure is mainly done for extracting a particular region or density of interest from a map of macromolecular assembly. In most of the tools (e.g., Chimera, CoDiv), the segmentation of maps is done by watershed transform (Beucher and Lantuejoul, 1979; Vincent and Soille, 1991). One can validate the individual subunits identified from automated segmentation by fitting them with their corresponding high-resolution crystal structures and/or manually segmented subunits using foldhunter (Jiang et al., 2001).

When both the Cryo-EM map of a macromolecule and its homology model or high resolution crystal structure are available, one can use fitting studies for getting a more detailed view of structural characterization of a molecular assembly. MODELLER, which is a homology modelling tool commonly used with X-ray and NMR structures as templates, also incorporates two fitting modules – Mod-EM for rigid fitting (Topf et al., 2005) and Flex-EM for flexible fitting (Topf et al., 2008). Similarly, one can also use the SITUS package for fitting crystal structures by both rigid body and flexible way (Wriggers et al., 1999). Other tools that can be used for docking atomic models into EM maps are Dock-EM (Roseman, 2000), EMFit (Rossmann et al., 2001), Foldhunter (Jiang et al., 2001), Fit in Map and MultiFit module in UCSF Chimera (Goddard et al., 2007; Tjioe et al., 2011), ADP_EM (Garzon et al., 2007) etc. Segger plug-in for the UCSF Chimera also facilitates rigid-body docking of models into density maps using segmented regions and it is reported (Pintilie and Chiu, 2012) to be faster than other fitting methods, such as ADP_EM, SITUS, Foldhunter and EMFit.

With the current advancements of electron microscopes and computational tools, subnanometer resolution (5-10 Å) structures are now easily obtainable. At these resolutions secondary structure elements (SSE) can be identified with help of component crystal structures or comparative models and the secondary structure elements α -helices and β -sheets appear as straight rods and curved plates respectively and loops as curved rods (Abeyasinghe et al., 2008; Ludtke et al., 2008). Helixhunter and foldhunter are the computational methods which facilitate the quantitative identification of structural features in terms of known folds in three-dimensional density maps at different resolutions. Helixhunter is used to analyze a three-dimensional map for alpha helix content at intermediate resolutions, while foldhunter can be used to localize

Table 1: Software used for single particle analysis

Software Name	Developer/s	Supported Operating System	Availability	Remarks
EMAN1/ EMAN2	The National Center for Macromolecular Imaging (NCMI)	Linux, Mac OS X and Windows	http://blake.bcm.edu/emanwiki/EMAN/	More stable in Linux Free/Open Source
IMAGIC	Image Science Software GmbH	Linux, Mac OS X and Windows	http://imagescience.de/imagic	Commercial
SPIDER	Wadsworth Center, New York State Department of Health	Linux, Mac OS X	http://www.wadsworth.org/spider_doc/spider/docs/spider	Free/Open Source
SPARX	Structural Biology Imaging Center, University of Texas-Houston Medical School	Linux, Mac OS X and Windows	http://sparx-em.org/sparxwiki	Depends on the EMAN2 library, Free/Open Source
XMIPP	Instruct Image Processing Center, Spanish National Center for Biotechnology CNB-CSIC	Linux, Mac OS X (still working on Windows version)	http://xmipp.cnb.csic.es/twiki/bin/view/Xmipp/WebHome	Free/Open Source
SUPRIM	The Scripps Research Institute Automated Molecular Imaging Group	Linux, Mac OS X	http://ami.scripps.edu/redmine/projects/ami/wiki/Suprim	Free/Open Source
Appion	The Scripps Research Institute Automated Molecular Imaging Group	Linux	http://ami.scripps.edu/redmine/projects/appion/wiki	Free/Open Source
ACE	The Scripps Research Institute Automated Molecular Imaging Group	Linux, Mac OS X and Windows	http://nramm.scripps.edu/software/ace	Free
CTFFind	MRC Laboratory of Molecular Biology	Linux	binary code can be obtained from authors	Free
CTFTilt	MRC Laboratory of Molecular Biology	Linux	binary code can be obtained from authors	Free
FindEM	The Scripps Research Institute Automated Molecular Imaging Group	Linux, Mac OS X and Windows	http://ami.scripps.edu/redmine/projects/ami/wiki/FindEM	Free
DogPicker	The Scripps Research Institute Automated Molecular Imaging Group	Linux, Mac OS X and Windows	http://ami.scripps.edu/redmine/projects/ami/wiki/DoGpicker	Free
TiltPicker	The Scripps Research Institute Automated Molecular Imaging Group	Linux	http://ami.scripps.edu/redmine/projects/ami/wiki/TiltPicker	Free
EM-BFACTOR	Computational Methods for Three-Dimensional Electron Microscopy	Linux, Mac OS X	http://www.ual.es/~jjfdez/SW/embfactor.html	Free

known or predicted folds or domains within larger macromolecular assemblies at lower resolutions ($< 20 \text{ \AA}$). Helixhunter and foldhunter are available within EMAN package (Jiang et al., 2001). SSEHunter is also used for detection of alpha helices and beta sheets in subnanometer resolution Cryo-EM structures; SSEBuilder is a tool for the rapid identification and annotation of SSEHunter results. These are packaged within EMAN (Baker et al., 2007). UCSF Chimera also includes these tools under analysis of intermediate resolution structures (AIRS) toolkit (Goddard et al., 2007) (to which support is currently discontinued). Another recent tool for analyzing protein structures at near atomic resolution is Gorgon (Baker et al., 2011), which is aimed at *de novo* model building in cryo-EM with the help of density skeletonization, SSE identification, building and correspondence, $C\alpha$ placement and model optimization. The above mentioned SSEHunter is also incorporated into Gorgon to identify SSEs, but it includes more features than the EMAN version of SSEHunter.

For identifying conserved regions in cryo-EM maps of large macromolecular assemblies one can use MOTIF-EM (Saha et al., 2010). SPI-EM can be used for predicting CATH superfamilies in 3D-EM Maps (Velazquez-Muriel et al., 2005).

Apart from these techniques, Russel et al. (2012) introduced a new method called the integrative modeling platform (IMP), a software package which combines the data from various individual experimental methods like X-ray crystallography, NMR spectroscopy, electron microscopy, small angle X-ray scattering etc. to generate new models and to overcome the barriers of each individual techniques. The modular structure of the 26S proteasome holocomplex is a recent example of the use of integrative approach (Lasker et al., 2012).

Some of the recently studied structures by three dimensional electron microscopy and single particle analysis

26S proteasome: One of the recent structures solved by 3DTEM is that of 26S proteasome (2.5 MDa) from *Saccharomyces cerevisiae*, at a resolution of 7.4 \AA (Fourier-Shell Correlation cut-off of 0.5). The molecular machine of the 26S proteasome is built from 31 different subunits, which catalyzes protein degradation. This high resolution structure was generated from 2.4 million individual particles. This map was used in conjunction with molecular dynamics-based flexible fitting to build a near-atomic resolution model of the holocomplex. They also determined the architecture of the lid complex subunits Rpn8/Rpn11. The map was released to the EM databank in 2012 (Beck et al., 2012).

Native LDL particles: Low-density lipoprotein (LDL) particles are the major carriers of cholesterol in the human circulation. Kumar et al. (2011) studied the three-dimensional structure of native LDL particles at 16 \AA resolution at physiological human body temperature (37°C). In the single particle reconstruction of LDL particles 52 micrographs at 6°C and 23 micrographs at 37°C were used, from which datasets of 71,521 and 29,844 images were resulted at 6°C and 37°C respectively and they found some noticeable differences like, the compact molecular packing of the core and order in a lipid-binding domain of apoB-100 were observed at 6°C , but not at 37°C and the features in the LDL particles that were not clearly separable in 3D maps at 6°C , they were able to highlight them at 37°C . They achieved a resolution of 16 \AA for the final reconstructions of LDL at both temperatures using a Fourier Shell Correlation cutoff of 0.5. The density map was released in EM databank with an EMD id 2180.

Turnip crinkle virus: Bakker et al. (2012) studied the 3D structures of both native and expanded forms of turnip crinkle virus (TCV), using cryo-electron microscopy, to visualize the encapsulated single-stranded RNA and coat protein (CP) N-

terminal regions not seen in the high-resolution X-ray structure of the virion. Fitting studies were done with the crystal structure of the TCV S and P domains. To study the expansion in TCV, the native virions were incubated in low-ionic-strength buffer containing EDTA at pH 8.5. The resulted particles were used to determine an icosahedrally averaged, 3-D reconstruction for the expanded TCV virion at ~17 Å resolution. The cryo-EM density maps for both native (11.5 Å) and expanded (17Å) TCVs determined by FSC at 0.5 cut-off were submitted to EM databank on with EMD ids 1863 and 1864 respectively.

SUMMARY

As we have seen so far, three dimensional electron microscopy stands as an outstanding tool for macromolecular structure determination for molecules like membrane proteins and heterogeneous assemblies, apart from other conventional techniques. These studies are very much important to understand the structure-function relationships of the macromolecules. It also has a unique feature like visualization of structures in their native state. Though there is a resolution limit for structures achieved by these techniques, sub-nanometer resolution is now easily achievable on mid-range microscopes (Cong and Ludtke, 2010). With further improvements of data acquisition and processing techniques and *in silico* tools one can have high resolution and more informative structure in near future.

ACKNOWLEDGEMENT

Ayaluru Murali thanks University Grants Commission, New Delhi (India) for financial support.

REFERENCES

- Abeyasinghe SS, Baker M, Chiu W, Ju T. Segmentation-free skeletonization of gray-scale volumes for shape understanding. IEEE International Conference on Shape Modeling and Applications 2008;63-71.
- Adrian M, Dubochet J, Lepault J, McDowell AW. Cryo-electron microscopy of viruses. Nature 1984;308:32-6.
- Adrian M, Dubochet J, Fuller SD, Harris JR. Cryo-negative staining. Micron 1998; 29:145-60.
- Baker ML, Yu Z, Chiu W, Bajaj C. Automated segmentation of molecular subunits in electron cryomicroscopy density maps. J Struct Biol 2006;156:432-41.
- Baker ML, Ju T, Chiu W. Identification of secondary structure elements in intermediate-resolution density maps. Structure 2007;15:7-19.
- Baker ML, Abeyasinghe SS, Schuh S, Coleman RA, Abrams A, Marsh MP et al. Modeling protein structure at near atomic resolutions with Gorgon. J Struct Biol 2011;174:360-73.
- Bakker SE, Ford RJ, Barker AM, Robottom J, Saunders K, Pearson AR et al. Isolation of an asymmetric RNA uncoating intermediate for a single-stranded RNA plant virus. J Mol Biol 2012; 417:65-78.
- Beck F, Unverdorben P, Bohn S, Schweitzer A, Pfeifer G, Sakata E et al. Near-atomic resolution structural model of the yeast 26S proteasome. Proc Natl Acad Sci USA 2012;109:14870-5.
- Berman HM, Kleywegt GJ, Nakamura H, Markley JL. The future of the protein data bank. Biopolymers 2013;99:218-22

- Beucher S, Lantuejoul C. Use of watersheds in contour detection. In: Proceedings of the International Workshop on Image Processing, Real-Time Edge and Motion Detection/Estimation (pp 17-21). Rennes, France, 1979.
- Booth CR, Jiang W, Baker ML, Zhou ZH, Ludtke SJ, Chiu W. A 9 angstrom single particle reconstruction from CCD captured images on a 200 kV electron cryo-microscope. *J Struct Biol* 2004;147:116-27.
- Bremer A, Henn C, Engel A, Baumeister W, Aebi U. Has negative staining still a place in biomacromolecular electron microscopy? *Ultramicroscopy* 1992;46:85-111.
- Brenner S, Horne RW. A negative staining method for high resolution electron microscopy of viruses. *Biochim Biophys Acta* 1959;34:103-10.
- Cong Y, Ludtke SJ. Single particle analysis at high resolution. *Methods Enzymol* 2010;482:211-35.
- Daniel MC, Tsvetkova IB, Quinkert ZT, Murali A, De M, Rotello VM et al. Role of surface charge density in nanoparticle-templated assembly of bromovirus protein cages. *ACS Nano* 2010;4:3853-60.
- De Carlo S, Harris JR. Negative staining and cryo-negative staining of macromolecules and viruses for TEM. *Micron* 2011;42:117-31.
- De Carlo S, El-Bez C, Alvarez-Rúa C, Borge J, Dubochet J. Cryo-negative staining reduces electron-beam sensitivity of vitrified biological particles. *J Struct Biol* 2002;138:216-26.
- Dubochet J, Lepault J, Freeman R, Berriman JA, Homo J-C. Electron microscopy of frozen water and aqueous solutions. *J Microsc* 1982;128:219-37.
doi: 10.1111/j.1365-2818.1982.tb04625.x (electronically published in 2011).
- Fernandez JJ, Luque D, Caston JR, Carrascosa JL. Sharpening high resolution information in single particle electron cryo-microscopy. *J Struct Biol* 2008;164:170-5.
- Frank J. Single-particle imaging of macromolecules by cryo-electron microscopy. *Annu Rev Biophys Biomol Struct* 2002;31:303-19.
- Frank J. Single-particle reconstruction of biological macromolecules in electron microscopy - 30 years. *Quart Rev Biophys* 2009;42:139-58.
- Frank J, Radermacher M, Penczek P, Zhu J, Li Y, Ladjadj M et al. SPIDER and WEB: processing and visualization of images in 3D electron microscopy and related fields. *J Struct Biol* 1996;116:190-9.
- Garzon JI, Kovacs J, Abagyan R, Chacon P. ADP_EM: fast exhaustive multi-resolution docking for high-throughput coverage. *Bioinformatics* 2007;23:427-33.
- Goddard TD, Huang CC, Ferrin TE. Visualizing density maps with UCSF Chimera. *J Struct Biol* 2007;157:281-7.
- Grigorieff N. FREALIGN: high-resolution refinement of single particle structures. *J Struct Biol* 2007;157:117-25.
- Hainfeld JF, Safer D, Wall JS, Simon M, Lin B, Powell RD. Methylamine vanadate (NanoVan) negative stain. In: Proceedings of the 52nd Annual Meeting, Microscopy Society of America (pp 132-2). San Francisco, CA: San Francisco Press, 1994.

- Hohn M, Tang G, Goodyear G, Baldwin PR, Huang Z, Penczek PA et al. SPARX, a new environment for Cryo-EM image processing. *J Struct Biol* 2007; 157:47-55.
- Humphrey W, Dalke A, Schulten K. VMD: visual molecular dynamics. *J Mol Graph* 1996;14:33-8, 27-8.
- Jaffe JS, Glaeser RM. Preparation of frozen-hydrated specimens for high resolution electron microscopy. *Ultramicroscopy* 1984;13:373-7.
- Jawhari A, Uhring M, De Carlo S, Crucifix C, Tocchini-Valentini G, Moras D et al. Structure and oligomeric state of human transcription factor TFIIE. *EMBO Rep* 2006;7:500-5.
- Jiang W, Ludtke SJ. Electron cryo-microscopy of single particles at sub-nanometer resolution. *Curr Opin Struct Biol* 2005;15: 571-7.
- Jiang W, Baker ML, Ludtke SJ, Chiu W. Bridging the information gap: Computational tools for intermediate resolution structure interpretation. *J Mol Biol* 2001; 308:1033-44.
- Jonic S, Sorzano CO, Boisset N. Comparison of single-particle analysis and electron tomography approaches: an overview. *J Microsc* 2008;232:562-79.
- Kassube SA, Fang J, Grob P, Yakovchuk P, Goodrich JA, Nogales E. Structural insights into Transcriptional Repression by non-coding RNAs that bind to Human Pol II. *J Mol Biol* 2012, Sep 4. pii: S0022-2836(12)00701-2.
doi: 10.1016/j.jmb.2012.08.024 [Epub ahead of print].
- Kremer JR, Mastrorade DN, McIntosh JR. Computer visualization of three-dimensional image data using IMOD. *J Struct Biol* 1996;116:71-6.
- Kumar V, Butcher SJ, Öörni K, Engelhardt P, Heikkonen J, Kaski K et al. Three-dimensional cryoEM reconstruction of native LDL particles to 16Å resolution at physiological body temperature. *PLoS One* 2011;6(5):e18841.
- Lander GC, Stagg SM, Voss NR, Cheng A, Fellmann D, Pulokas J et al. Appion: an integrated, database-driven pipeline to facilitate EM image processing. *J Struct Biol* 2009;166:95-102.
- Lasker K, Forster F, Bohn S, Walzthoeni T, Villa E, Unverdorben P et al. Molecular architecture of the 26S proteasome holo-complex determined by an integrative approach. *Proc Natl Acad Sci USA* 2012; 109:1380-7.
- Llorca O. Introduction to 3D reconstruction of macromolecules using single particle electron microscopy. *Acta Pharmacol Sin* 2005;26:1153-64.
- Ludtke SJ, Chiu W. Focal pair merging for contrast enhancement of single particles. *J Struct Biol* 2003;144:73-8.
- Ludtke SJ, Baldwin PR, Chiu W. EMAN: semiautomated software for high-resolution single-particle reconstructions. *J Struct Biol* 1999;128:82-97.
- Ludtke SJ, Baker ML, Chen D-H, Song J-L, Chuang DT, Chiu W. De novo backbone trace of GroEL from single particle electron cryomicroscopy. *Structure* 2008;16:441-8.
- Ludwig K, Yan S, Fan H, Reutter W, Bottcher C. The 3D structure of rat DPPIV/CD26 as obtained by cryo-TEM and single particle analysis. *Biochem Biophys Res Commun* 2003;304:73-7.
- Mallick SP, Carragher B, Potter CS, Kriegman DJ. ACE: automated CTF estimation. *Ultramicroscopy* 2005;104:8-29.

- Mindell JA, Grigorieff N. Accurate determination of local defocus and specimen tilt in electron microscopy. *J Struct Biol* 2003;142:334-47.
- Pettersen EF, Goddard TD, Huang CC, Couch GS, Greenblatt DM, Meng EC et al. UCSF Chimera - a visualization system for exploratory research and analysis. *J Comput Chem* 2004;25:1605-12.
- Pintilie G, Chiu W. Comparison of Segger and other methods for segmentation and rigid-body docking of molecular components in Cryo-EM density maps. *Biopolymers* 2012;97:742-60.
- Pintilie GD, Zhang J, Goddard TD, Chiu W, Gossard DC. Quantitative analysis of cryo-EM density map segmentation by watershed and scale-space filtering, and fitting of structures by alignment to regions. *J Struct Biol* 2010;170:427-38.
- Pruggnaller S, Mayr M, Frangakis AS. A visualization and segmentation toolbox for electron microscopy. *J Struct Biol* 2008;164:161-5.
- Roseman AM. Docking structures of domains into maps from cryo-electron microscopy using local correlation. *Acta Crystallogr D Biol Crystallogr* 2000;56:1332-40.
- Roseman AM. FindEM - a fast, efficient program for automatic selection of particles from electron micrographs. *J Struct Biol* 2004;145:91-9.
- Rosenthal PB, Henderson R. Optimal determination of particle orientation, absolute hand, and contrast loss in single-particle electron cryomicroscopy. *J Mol Biol* 2003;333:721-45.
- Rossmann MG, Bernal R, Pletnev SV. Combining electron microscopic with X-ray crystallographic structures. *J Struct Biol* 2001;136:190-200.
- Rouiller I, DeLaBarre B, May AP, Weis WI, Brunger AT, Milligan RA et al. Conformational changes of the multi-function p97 AAA ATPase during its ATPase cycle. *Nat Struct Biol* 2002;9: 950-7.
- Ruprecht J, Nield J. Determining the structure of biological macromolecules by transmission electron microscopy, single particle analysis and 3D reconstruction. *Prog Biophys Mol Biol* 2001;75:121-64.
- Russel D, Lasker K, Webb B, Velazquez-Muriel J, Tjioe E, Schneidman-Duhovny D et al. Putting the pieces together: integrative modeling platform software for structure determination of macromolecular assemblies. *PLoS Biol* 2012;10:e1001244.
- Saha M, Levitt M, Chiu W. MOTIF-EM: an automated computational tool for identifying conserved regions in CryoEM structures. *Bioinformatics* 2010;26:i301-9.
- Schroeter JP, Bretau diere JP. SUPRIM: easily modified image processing software. *J Struct Biol* 1996;116:131-7.
- Shrive AK, Burns I, Chou HT, Stahlberg H, Armstrong PB, Greenhough TJ. Crystal structures of Limulus SAP-like pentraxin reveal two molecular aggregations. *J Mol Biol* 2009;386:1240-54.
- Sorzano CO, Marabini R, Velazquez-Muriel J, Bilbao-Castro JR, Scheres SH, Carazo JM et al. XMIPP: a new generation of an open-source image processing package for electron microscopy. *J Struct Biol* 2004;148:194-204.
- Sousa D, Grigorieff N. Ab initio resolution measurement for single particle structures. *J Struct Biol* 2007;157:201-10.

- Spagnolo L, Rivera-Calzada A, Pearl LH, Llorca O. Three-dimensional structure of the human DNA-PKcs/Ku70/Ku80 complex assembled on DNA and its implications for DNA DSB repair. *Mol Cell* 2006;22:511-9.
- Sun J, DuFort C, Daniel MC, Murali A, Chen C, Gopinath K et al. Core-controlled polymorphism in virus-like particles. *Proc Natl Acad Sci USA* 2007;104:1354-9.
- Talmon Y, Davis HT, Scriven LE, Thomas EL. Cold-stage microscopy system for fast-frozen liquids. *Rev Sci Instrum* 1979;50:698.
- Taylor KA, Glaeser RM. Hydrophilic support films of controlled thickness and composition. *Rev Sci Instrum* 1973;44:1546-7.
- Thuman-Commike PA. Single particle macromolecular structure determination via electron microscopy. *FEBS Lett* 2001;505:199-205.
- Tjioe E, Lasker K, Webb B, Wolfson HJ, Sali A. MultiFit: a web server for fitting multiple protein structures into their electron microscopy density map. *Nucleic Acids Res* 2011;39:W167-70.
- Topf M, Baker ML, John B, Chiu W, Sali A. Structural characterization of components of protein assemblies by comparative modeling and electron cryo-microscopy. *J Struct Biol* 2005;149:191-203.
- Topf M, Lasker K, Webb B, Wolfson H, Chiu W, Sali A. Protein structure fitting and refinement guided by cryo-EM density. *Structure* 2008;16:295-307.
- van Heel M, Harauz G, Orlova EV, Schmidt R, Schatz M. A new generation of the IMAGIC image processing system. *J Struct Biol* 1996;116:17-24.
- Velazquez-Muriel JA, Sorzano CO, Scheres SH, Carazo JM. SPI-EM: towards a tool for predicting CATH superfamilies in 3D-EM maps. *J Mol Biol* 2005;345:759-71.
- Vincent L, Soille P. Watersheds in digital spaces: an efficient algorithm based on immersion simulations. *IEEE Trans Patt Anal Machine Intell* 1991;13:583-98.
- Volkman N. A novel three-dimensional variant of the watershed transform for segmentation of electron density maps. *J Struct Biol* 2002;138:123-9.
- Voss NR, Yoshioka CK, Radermacher M, Potter CS, Carragher B. DoG Picker and TiltPicker: software tools to facilitate particle selection in single particle electron microscopy. *J Struct Biol* 2009;166:205-13.
- Westenberger P. Avizo-3d visualization framework. *Geoinformatics Conference* 2008;1-11.
- Winkler H. 3D reconstruction and processing of volumetric data in cryo-electron tomography. *J Struct Biol* 2007;157:126-37.
- Wriggers W, Milligan RA, McCammon JA. Situs: A package for docking crystal structures into low-resolution maps from electron microscopy. *J Struct Biol* 1999;125:185-95.
- Yi W, Wah C, Zhou ZH. Full contrast transfer function correction in 3D cryo-EM reconstruction. *IEEE Proc. of International Conference on Communications, Circuits and Systems (ICCCAS)* 2004;2:960-4.