



Evolution of Diverse Effective N₂-Fixing Microsymbionts of *Cicer arietinum* following Horizontal Transfer of the *Mesorhizobium ciceri* CC1192 Symbiosis Integrative and Conjugative Element

Yvette Hill,^a Elena Colombi,^{b,c} Emma Bonello,^a Timothy Haskett,^{a*} Joshua Ramsay,^{b,c} Graham O'Hara,^a  Jason Terpolilli^a

^aCentre for Rhizobium Studies, Murdoch University, Perth, Australia

^bCurtin Medical School, Curtin University, Perth, Australia

^cCurtin Health Innovation Research Institute, Curtin University, Perth, Australia

ABSTRACT Rhizobia are soil bacteria capable of forming N₂-fixing symbioses with legumes, with highly effective strains often selected in agriculture as inoculants to maximize symbiotic N₂ fixation. When rhizobia in the genus *Mesorhizobium* have been introduced with exotic legumes into farming systems, horizontal transfer of symbiosis integrative and conjugative elements (ICEs) from the inoculant strain to soil bacteria has resulted in the evolution of ineffective N₂-fixing rhizobia that are competitive for nodulation with the target legume. In Australia, *Cicer arietinum* (chickpea) has been inoculated since the 1970s with *Mesorhizobium ciceri* symbiovar *ciceri* CC1192, a highly effective strain from Israel. Although the full genome sequence of this organism is available, little is known about the mobility of its symbiosis genes and the diversity of cultivated *C. arietinum*-nodulating organisms. Here, we show that the CC1192 genome harbors a 419-kb symbiosis ICE (ICEMcSym¹¹⁹²) and a 648-kb *repABC*-type plasmid (pMC1192) carrying putative *fix* genes. We sequenced the genomes of 11 *C. arietinum* nodule isolates from a field site exclusively inoculated with CC1192, and we showed that they were diverse unrelated *Mesorhizobium* strains carrying ICEMcSym¹¹⁹², which indicated that they had acquired the ICE by environmental transfer. No exconjugants harbored pMc1192, and the plasmid was not essential for N₂ fixation in CC1192. Laboratory conjugation experiments confirmed that ICEMcSym¹¹⁹² is mobile, integrating site specifically within the 3' end of one of the four Ser-tRNA genes in the R7ANS recipient genome. Strikingly, all ICEMcSym¹¹⁹² exconjugants were as efficient as CC1192 at fixing N₂ with *C. arietinum*, demonstrating that ICE transfer does not necessarily yield ineffective microsymbionts as observed previously.

IMPORTANCE Symbiotic N₂ fixation is a key component of sustainable agriculture, and in many parts of the world legumes are inoculated with highly efficient strains of rhizobia to maximize fixed N₂ inputs into farming systems. Symbiosis genes for *Mesorhizobium* spp. are often carried chromosomally within mobile gene clusters called ICEs. In Australia, where all agricultural legumes and their rhizobia are exotic, horizontal transfer of ICEs from inoculant *Mesorhizobium* strains to native rhizobia has led to the evolution of inefficient strains that outcompete the original inoculant, with the potential to render it ineffective. However, the commercial inoculant strain for *Cicer arietinum* (chickpea), *M. ciceri* CC1192, has a mobile symbiosis ICE (ICEMcSym¹¹⁹²) that can support high rates of N₂ fixation following either environmental or laboratory transfer into diverse *Mesorhizobium* backgrounds, demonstrating that ICE transfer does not necessarily yield ineffective microsymbionts as observed previously.

KEYWORDS nitrogen fixation, rhizobia, horizontal transfer, symbiosis, chickpea, *Mesorhizobium ciceri*

Citation Hill Y, Colombi E, Bonello E, Haskett T, Ramsay J, O'Hara G, Terpolilli J. 2021. Evolution of diverse effective N₂-fixing microsymbionts of *Cicer arietinum* following horizontal transfer of the *Mesorhizobium ciceri* CC1192 symbiosis integrative and conjugative element. *Appl Environ Microbiol* 87:e02558-20. <https://doi.org/10.1128/AEM.02558-20>.

Editor Jeremy D. Semrau, University of Michigan-Ann Arbor

Copyright © 2021 Hill et al. This is an open-access article distributed under the terms of the [Creative Commons Attribution 4.0 International license](https://creativecommons.org/licenses/by/4.0/).

Address correspondence to Jason Terpolilli, j.terpolilli@murdoch.edu.au.

* Present address: Timothy Haskett, Department of Plant Sciences, University of Oxford, Oxford, United Kingdom.

Received 17 October 2020

Accepted 6 December 2020

Accepted manuscript posted online 18 December 2020

Published 12 February 2021

Rhizobia are soil bacteria that are capable of forming a symbiotic association with legumes. The symbiosis is established when rhizobia infect legume roots, resulting in the formation of root nodules, where atmospheric N₂ is “fixed” by rhizobia into organic nitrogen that is incorporated into plant tissues. When legumes are grown in rotation with other crops, legume nitrogen enters the soil following plant senescence and decay or deposition from grazing livestock (1). Legumes and rhizobia are often introduced into agriculture to increase soil fertility and to reduce the use of industrially synthesized nitrogenous fertilizers (2, 3). In Australia, all forage and grain legumes are exotic, having been introduced following European colonization in the late 18th century (4, 5). Prior to this, it appears that Australian soils lacked rhizobia capable of forming effective N₂-fixing symbioses with introduced legumes (6, 7). Therefore, many inoculant strains have been sourced from other parts of the world through dedicated selection programs to match plant host with rhizobia that are well adapted to these environments and capable of fixing large amounts of N₂ with the target legume (7–9).

Since the 1990s, it has become increasingly clear that the genetic diversity of resident strains in Australian soils that are capable of nodulating agricultural legumes far exceeds the diversity of strains introduced as inoculants (10–13). For some legumes, these resident or “naturalized” rhizobia are present in such large numbers that they, and not the inoculant strain, dominate as nodule occupants (14, 15). These resident strains often fix N₂ suboptimally (16–18), posing a significant constraint to maximizing symbiotic N₂ fixation. While the origin of resident strains has been debated for some time (60), mounting evidence for the role of horizontal gene transfer as a driver for bacterial evolution (19–21) indicates that this is likely a key contributor to their evolution.

Rhizobial symbiosis genes, which include the nodulation genes (*nod*, *noe*, and *nol* [collectively, *nod* genes]) (22) and nitrogen fixation genes (*nif* and *fix*), are critical to the establishment of N₂-fixing legume associations (23). Symbiosis genes can be carried on plasmids or clustered on the bacterial chromosome, and this arrangement appears to be largely genus specific (24, 25). For rhizobia in the genus *Mesorhizobium*, symbiosis genes are carried chromosomally within integrative and conjugative elements (ICEs), which can be either monopartite or tripartite in structure (26–28).

The first symbiosis ICE discovered was the monopartite ICEMSym^{R7A} in *Mesorhizobium japonicum* (formerly *Mesorhizobium loti*) R7A (27, 29), following inoculation of the introduced legume *Lotus corniculatus* in New Zealand. Rhizobia isolated several years later from *L. corniculatus* root nodules were genetically distinct from the inoculant strain but harbored the R7A symbiosis ICE (30). ICEMSym^{R7A} is integrated at the 3′ end of the Phe-tRNA gene in the R7A chromosome, flanked by attachment sites (*attL* and *attR*) that contain identical 17-bp sequences (26). Excision of ICEMSym^{R7A} from the chromosome is catalyzed by integrase (IntS)- and recombination directionality factor (RdfS)-mediated site-specific recombination between *attL* and *attR*. The resulting episome can subsequently transfer by conjugation to a recipient cell, integrating by IntS-dependent recombination at the 3′ end of the Phe-tRNA gene (26). Importantly, field experiments at a second site in New Zealand showed over a four-year period that 75% of root nodules sampled contained diverse *Mesorhizobium* strains that had acquired ICEMSym^{R7A}. This converted them into *L. corniculatus*-nodulating microsymbionts that outcompeted the inoculant for nodulation of the legume (31).

Novel microsymbionts have also evolved in Australian soils after introduction of the pasture legume *Biserrula pelecinus* and *Mesorhizobium ciceri* symbiovar (sv.) *biserrulae* WSM1271 from the Mediterranean into western Australia (9, 18, 32). Six years after inoculation at a site with no preexisting *B. pelecinus*-nodulating rhizobia, novel isolates genetically distinct from the inoculant were recovered from *B. pelecinus* nodules. Crucially, all of the novel isolates were either completely ineffective (i.e., nodulated *B. pelecinus* but did not fix N₂) or fixed significantly less N₂ than did WSM1271 (18). Detailed analysis of two strains (*Mesorhizobium australicum* WSM2073 and *Mesorhizobium opportunistum* WSM2075) showed that they both had acquired the WSM1271 tripartite symbiosis ICE (ICEMcSym¹²⁷¹) by horizontal transfer (28). A similar analysis following inoculation of *B. pelecinus* with *M.*

ciceri sv. *biserrulae* WSM1497 found that 47.5% of the strains isolated from nodules were novel and all of them were less effective than WSM1497 at fixing N₂, with six being completely ineffective (18). Therefore, horizontal transfer of symbiosis ICEs from *Mesorhizobium* inoculants has resulted in the evolution of novel strains that are competitive but less effective at fixing N₂ than the inoculant strain.

Cicer arietinum (chickpea) is the largest legume crop in Australia (33), grown predominantly in northeastern Australia and extending to regions in the southeast as well as parts of western Australia. *C. arietinum* forms a N₂-fixing symbiosis with rhizobia in the genus *Mesorhizobium* (34); however, when this grain legume was first introduced in the 1970s, Australian soils appeared to lack compatible *C. arietinum*-nodulating rhizobia (7). This led to the selection of *M. ciceri* sv. *ciceri* strain CC1192 from Israel and its subsequent use as a commercial inoculant for *C. arietinum* across the country for more than 40 years (7, 15, 35). Despite this, Elias and Herridge (36) reported that 53% of *C. arietinum* nodules sampled from 26 farms in eastern Australia were occupied by strains genetically distinct from CC1192. Furthermore, 41% of a subset of those strains were significantly less effective than CC1192 at fixing N₂ with *C. arietinum* (36).

The presence of soil populations of suboptimally effective *C. arietinum*-nodulating rhizobia could reduce the benefits to agriculture of symbiotic N₂ fixation following inoculation with CC1192. Here, we investigate the genome of CC1192 and describe the structure and genetic content of its symbiosis ICE, ICE_{McSym}¹¹⁹². We show that genes essential for symbiosis are carried on ICE_{McSym}¹¹⁹² and that it is transferable *in vitro* and in the field. Remarkably, transfer of the ICE into genetically diverse *Mesorhizobium* strains yields strains that are effective microsymbionts of *C. arietinum*, showing that ICE transfer does not always yield inefficient N₂-fixing strains.

RESULTS

Genetically diverse strains of *Mesorhizobium* nodulate *C. arietinum*. To investigate the genetic diversity of rhizobia isolated from field-cultivated *C. arietinum*, we performed whole-genome sequencing of 11 strains (WSM4303 to WSM4308, WSM4310 to WSM4313, and WSM4315) available from the work of Elias and Herridge (36). We compared these sequences to those of selected *Mesorhizobium* type strains, commercial inoculants released in Australia, and strains from the recent study of *Cicer*-nodulating rhizobia by Greenlon et al. (37) by constructing a genome tree with bcgTree based on 107 essential single-copy core genes (Fig. 1). The 11 *C. arietinum* strains grouped into three clades, which were not closely related to the commercial inoculant strains for *C. arietinum* (*M. ciceri* sv. *ciceri* CC1192), *Biserrula pelecinus* (*M. ciceri* sv. *biserrulae* WSM1497 and WSM1271), or *Lotus* spp. (*M. loti* SU343). The largest clade contained eight of the strains, subdivided into five subgroups (WSM4307 with WSM4315, WSM4304 with WSM4308, WSM4305 with WSM4311, and WSM4310 and WSM4312 each on a separate branch), while WSM4306 and WSM4303 grouped together on a separate branch, only distantly related to other strains in the tree. WSM4313 grouped separately and was most closely related to several strains isolated from *C. arietinum* growing in Ethiopia (*Mesorhizobium* sp. strains M2D, M2E, and M2A) and Turkey (*Mesorhizobium* sp. strain M2C) and *Mesorhizobium plurfarium* from *Acacia senegal* in West Africa.

Whole-genome sequences are not available for *Mesorhizobium* strains isolated from Australian native legumes; therefore, we were unable to extend this core gene analysis to those organisms. Instead, we constructed a 16S rRNA tree using the 11 strains, available sequences from native legume-nodulating *Mesorhizobium* strains, and commercial inoculant and selected type strains from the genome tree (Fig. 2). Consistent with the genome tree, the 11 strains grouped into the same three clades, with the largest clade being clustered with *Mesorhizobium* strains U and T, isolated from the native legumes *Acacia obliquinervia* and *Goodia lotifolia* from southeastern Australia (38). Similarly, WSM4313 grouped closely with *Mesorhizobium* grouping T19, representing a genus-species comprising 39 strains isolated from native legumes *Acacia stenophylla* and *Acacia*

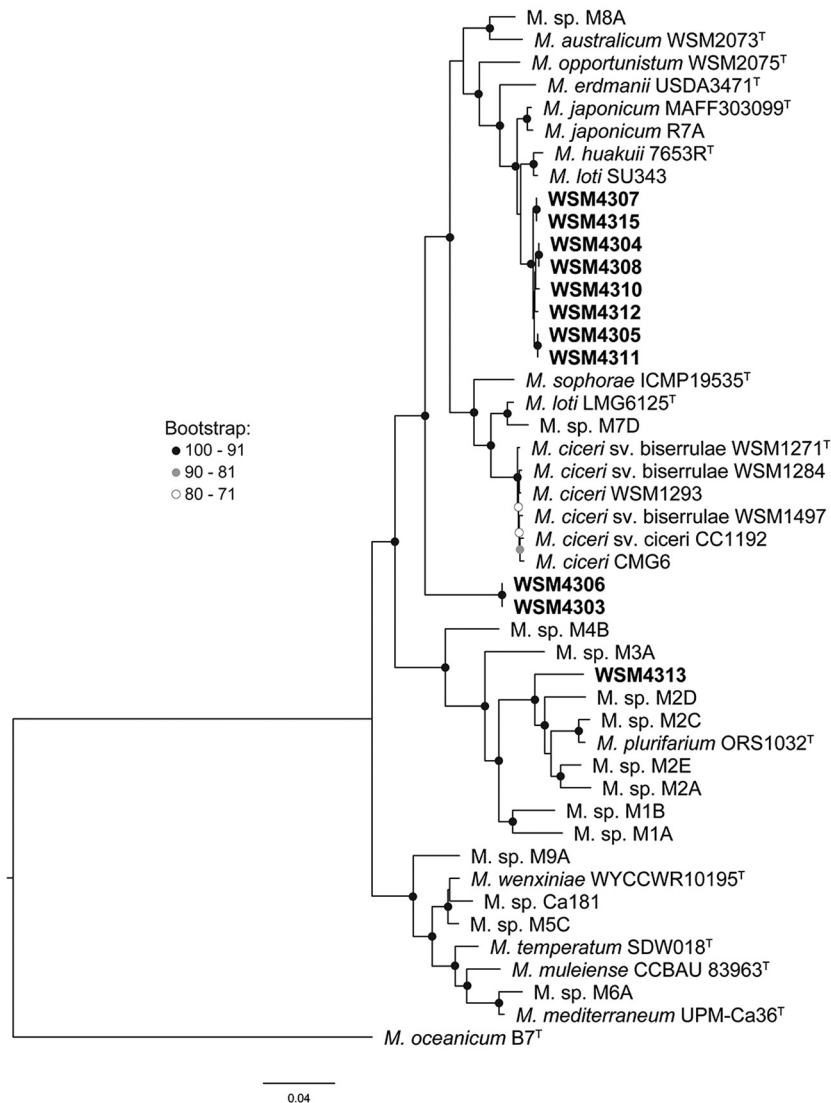


FIG 1 Genome tree of *Mesorhizobium* isolates prepared with bcgTree using a concatenated alignment of 107 core proteins conserved across bacterial genera to compare organisms. The tree was constructed using the RAxML program with 100 bootstraps. In this tree, the genome of *M. ciceri* Ca181 has been renamed *M. sp. Ca181* because it is genetically distinct from the *M. ciceri* clade.

salicina growing in the Murray River Basin area of southeastern Australia (39), while the remaining two strains (WSM4303 and WSM4306) did not group closely with the *Mesorhizobium* strains from Australian native legumes. Therefore, the 11 strains appeared to be novel *C. arietinum*-nodulating *Mesorhizobium* strains. Given that Australian soils were reported to lack compatible *C. arietinum*-nodulating rhizobia prior to the release of CC1192 (7), this finding suggested these 11 strains might have acquired their symbiosis genes following introduction of the inoculant strain.

Environmental and laboratory transfer of ICEMcSym¹¹⁹² produces effective symbionts. Previous work predicted that CC1192 harbored a 419-kb symbiosis ICE within its 6.29-Mbp chromosome (GenBank accession number CP015062) (40), referred to as ICEMcSym¹¹⁹². ICEMcSym¹¹⁹² is a monopartite ICE flanked by 20-bp repeat DNA sequences (5'-GAATCCCCTCCCTCCGCCA-3') identical to the 3' end of the Ser-tRNA gene, which presumably contains the core regions of the integrase attachment sites *attL* and *attR* (Fig. 3). The genetic complement of ICEMcSym¹¹⁹² is broadly similar to that of the well-characterized ICEM/Sym^{R7A} from *M. japonicum* R7A. ICEMcSym¹¹⁹²



FIG 2 Neighbor-joining phylogenetic tree of 16S rRNA gene sequences of *Mesorhizobium* isolates from this study and other rhizobia obtained from GenBank (type strains are indicated by T in the strain identification). Isolates from this study and the commercial inoculant *M. ciceri* CC1192 are indicated in bold type. Analyses were conducted in Geneious v11.1.5 using the Tamura-Nei method to determine genetic distances, with *Rhizobium leguminosarum* bv. *viciae* USDA 2370^T as the outgroup. Branch values of <50% from 5,000 bootstraps are not shown.

harbors a complete set of core nodulation (*nod*) genes and nitrogen fixation (*nif* and *fix*) genes, as well as an integrase gene (*intS*) distinct from previously characterized symbiosis ICEs (see Table S1 in the supplemental material for gene coordinates), with conjugation genes (*trb* gene cluster and *rlxS*) and ICE excision regulation genes (*rdiS* and *fseA*) (Fig. 3) highly similar to those of ICEM/Sym^{R7A} and the tripartite ICEMcSym¹²⁷¹. These characteristics suggested that ICEMcSym¹¹⁹² is mobile; therefore, we compared the *de novo* assembled genomes of the novel *Mesorhizobium* strains with the CC1192 genome. The entire 419-kb ICEMcSym¹¹⁹² region was present in all 11 strains, confirming the environmental transfer of ICEMcSym¹¹⁹² to these strains (Fig. 4). We next investigated how the *Mesorhizobium* recipients of ICEMcSym¹¹⁹² performed in controlled glasshouse experiments on *C. arietinum*. Of the 11 strains tested against CC1192, all produced foliage dry weights that were not significantly different from those with CC1192, with mean values ranging from 0.402 to 0.506 g/plant (Fig. 5).

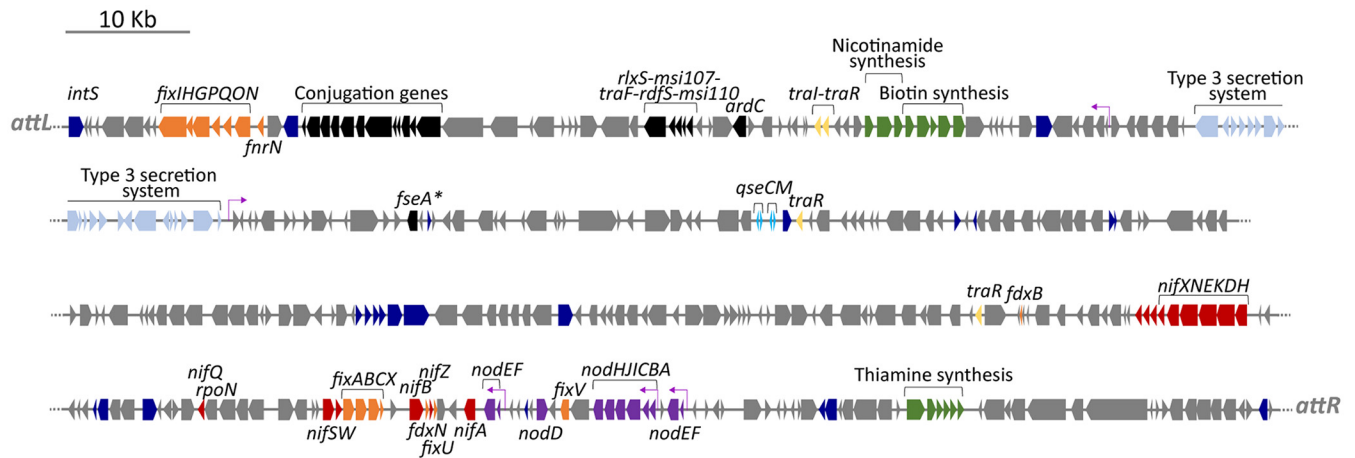


FIG 3 Structure of ICEMcSym^{CC1192}. *M. ciceri* CC1192 carries a 418,907-bp symbiosis ICE (base pairs 4216431 to 4635338) adjacent to the sole Ser-tRNA (A4R28_RS20655) in the *M. ciceri* CC1192 genome, with the ICE containing 373 predicted coding sequences. Gene annotations are color coded as follows: blue, mobile genes such as transposases, integrases, and recombinases; pale blue, type 3 secretion systems; black, ICE transfer genes; yellow, quorum-sensing genes; green, vitamin biosynthesis genes; red, nitrogen fixation *nif* genes; orange, nitrogen fixation *fix* genes; purple, nodulation *nod* genes. Putative *nod* boxes are indicated by arrows. An asterisk (*) indicates frameshifting required for gene to be translated. Gene coordinates are provided in Table S1 in the supplemental material.

Therefore, these data demonstrate that these novel *Mesorhizobium* strains have acquired ICEMcSym¹¹⁹² and are fully effective at fixing N₂ on *C. arietinum*.

We next tested the mobility of ICEMcSym¹¹⁹² *in vitro*, by carrying out conjugation experiments using R7ANS (the ICE-cured derivative of *M. japonicum* R7A) as a recipient (26). The neomycin resistance plasmid pPR3 was introduced into R7ANS to enable selection against donor cells. While R7ANS is auxotrophic for biotin, nicotinate, and thiamine, the genes for the biosynthesis of these vitamins (*bioBFAZ*, *nadABC* and *thiCOSHED*, respectively) are present on ICEMcSym¹¹⁹² (Fig. 3). R7ANS exconjugants harboring ICEMcSym¹¹⁹² were isolated on medium lacking biotin and nicotinate. Vitamin prototrophs were acquired on selection plates, with a transfer frequency of $1.02 \times 10^{-7} \pm 0.52 \times 10^{-7}$ exconjugants per donor (mean \pm standard error of the mean).

As with the CC1192 genome, in which there are multiple Ser-tRNA genes (40), five Ser-tRNA genes are present in the R7ANS genome, which are potential integration sites for ICEMcSym¹¹⁹², although only one (R7A2020_05665) contains a 20-bp region identical to those present in the *attL* and *attR* sites flanking ICEMcSym¹¹⁹². This indicated that this Ser-tRNA was a likely integration site for ICEMcSym¹¹⁹² in the R7ANS genome. PCR screening of 10 exconjugants with primers designed to target integration of ICEMcSym¹¹⁹² at R7A2020_05665 showed all 10 had integrated at this site. To confirm that mating of CC1192 with R7ANS had resulted in the complete transfer of ICEMcSym¹¹⁹² into the recipient strain, two exconjugant strains, MCC110 (GenBank accession number [JADAMJ000000000](https://www.ncbi.nlm.nih.gov/nuccore/JADAMJ000000000)) and MCC111 (GenBank accession number [JADAMK000000000](https://www.ncbi.nlm.nih.gov/nuccore/JADAMK000000000)), were selected for whole-genome sequencing. BLASTN comparison of the *de novo* assembled genomes with wild-type CC1192 confirmed that the 419-kb ICEMcSym¹¹⁹² had been transferred in its entirety into the R7ANS recipient, integrating at Ser-tRNA (R7A2020_05665) (Fig. 4). Therefore, ICEMcSym¹¹⁹² is a mobile element able to be acquired by the R7ANS recipient strain.

In previous work with the *B. pelecinus*-nodulating strain *M. ciceri* sv. *biserrulae* WSM1271, laboratory transfer of the WSM1271 tripartite ICEMcSym¹²⁷¹ to R7ANS produced exconjugants that were only partially effective at fixing N₂ with the legume host (40). To see whether the R7ANS exconjugants that had acquired ICEMcSym¹¹⁹² similarly showed reduced effectiveness, we examined the symbiotic phenotype of the R7ANS exconjugants MCC110 and MCC111 in comparison with CC1192 on *C. arietinum*, along with R7ANS and its parent strain *M. japonicum* R7A. Both R7A and R7ANS failed to nodulate *C. arietinum*, and plant shoot dry weights were not significantly different from those of uninoculated N-starved controls (Fig. 6a). In contrast, *C. arietinum* inoculated

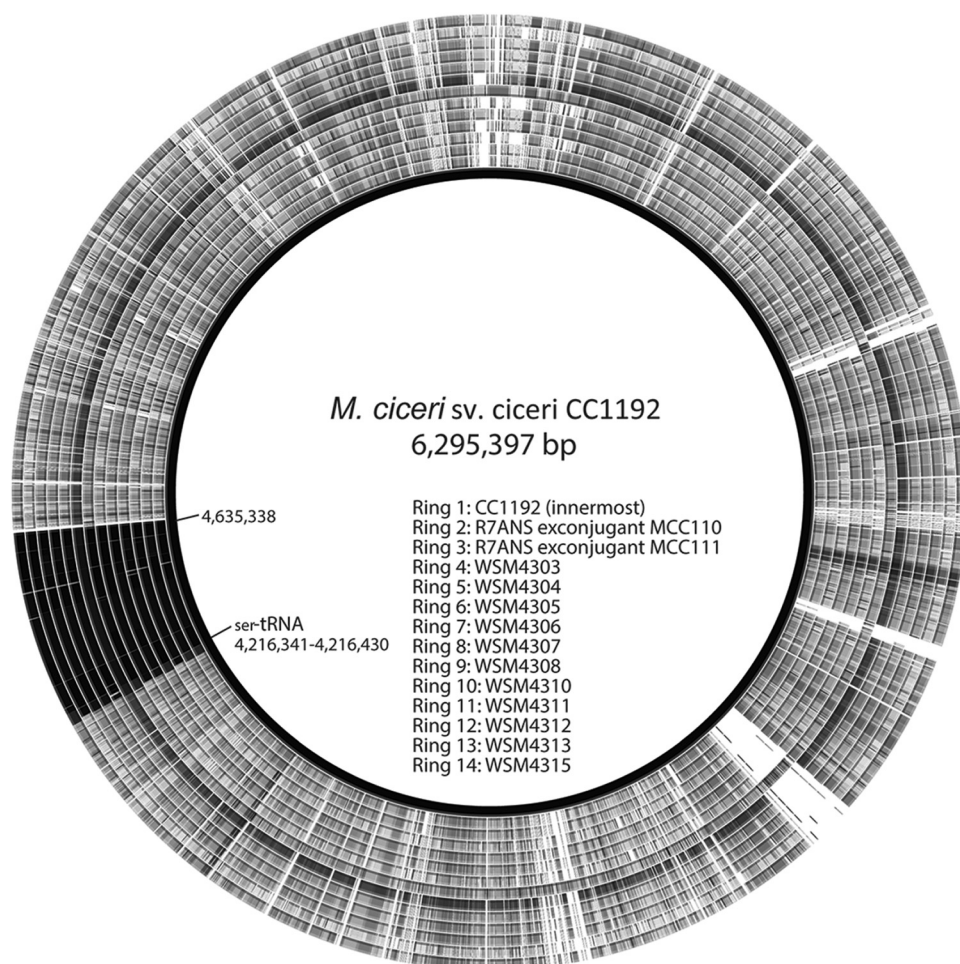


FIG 4 Conservation of ICEMcSym¹¹⁹² in CC1192 (inner circle), two exconjugants of R7ANS (MCC110 and MCC111), and 11 novel *C. arietinum*-nodulating field isolates, compared to the CC1192 reference genome. Circular BLASTN alignments of CC1192 with MCC110, MCC111, WSM4303, WSM4304, WSM4305, WSM4306, WSM4307, WSM4308, WSM4310, WSM4311, WSM4312, WSM4313, and WSM4315 were carried out using BRIG (68). Black regions indicate >99% conserved nucleotide identity.

with MCC110 or MCC111 produced plants with >3.5-fold greater shoot biomass than the N-starved control. These values were not significantly different ($P \leq 0.05$) from the mean shoot dry weights of CC1192-inoculated plants. Although MCC110 and MCC111 produced approximately 23% more nodules ($P < 0.05$) than CC1192 on *C. arietinum*, values for the total nodule mass per plant were not different ($P = 0.115$) (Fig. 6b). Similarly, comparison of nitrogenase activity between wild-type and exconjugant strains by acetylene reduction assays showed that acetylene reduction rates per plant, per nodule, and per unit nodule mass were not significantly different across the three strains (Table 1). Therefore, the transfer of ICEMcSym¹¹⁹² from CC1192 into R7ANS yields exconjugants that form a symbiosis that is equally effective at fixing N₂ with *C. arietinum*, compared with wild-type CC1192.

The 648-bp plasmid pMc1192 is not essential for N₂ fixation with *C. arietinum*.

Although acquisition of the symbiosis genes on ICEMcSym¹¹⁹² is sufficient to support CC1192 levels of N₂ fixation in the 11 novel strains of *Mesorhizobium* and R7ANS(ICEMcSym¹¹⁹²) exconjugants, further sequence analysis of the CC1192 complete genome showed additional putative symbiosis-related genes on the *repABC*-type plasmid pMc1192 (GenBank accession number CP015063). Among the 645 predicted coding sequences on this 648,231-bp plasmid are copies of *fixNOQP* (A4R28_RS30260, RS30265, RS30270, and RS30275) and *fixGHI*

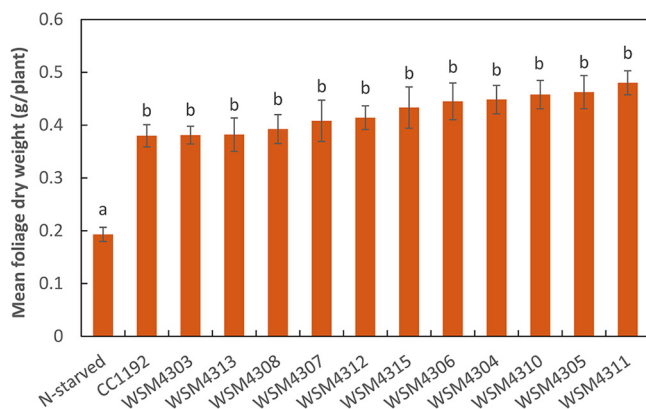


FIG 5 Mean foliage dry weight of *Cicer arietinum* cv. Neelam inoculated separately with 11 novel isolates and the commercial inoculant *M. ciceri* CC1192 and grown for 49 days. Treatments are shown with standard errors of the means, and the treatments that share a letter are not significantly different according to the Tukey HSD test ($P \leq 0.05$). Uninoculated control plants received no nitrogen (N-starved) and were devoid of nodules.

(A4R28_RS30280, RS30285, and RS30290). These copies are in addition to those located on ICEMcSym¹¹⁹² (*fixNOQP*, A4R28_RS20715, RS20710, RS20705, and RS20700; *fixGHI*, A4R28_RS20695, RS20690, and RS20685), with which they share a pairwise average nucleotide identity of 88%. The plasmid *fixGHI* gene cluster also includes *fixS* (A4R28_RS30295), a gene that is absent from the ICE copy of *fixGHI* (Fig. 3). Furthermore, pMc1192 also harbors *fixLJ* (A4R28_30350 and A4R28_30355) and *fixK* (A4R28_30370), which are not present on ICEMcSym¹¹⁹². The *fixLJ* and *fixK* genes are essential for N₂ fixation in the *Sinorhizobium meliloti*-*Medicago* symbiosis, with FixLJ acting as a low-O₂-sensing two-component sensor-regulator system, which in turn controls expression of transcriptional regulators *fixK* and *nifA* (41).

To determine whether the plasmid *fix* genes had a role in the CC1192-*C. arietinum* symbiosis, plasmid pMc1192 was cured from CC1192 using a plasmid incompatibility approach. Two independently acquired plasmid-cured derivatives of CC1192 (MCC69 and MCC70) were isolated. PCR screening, Eckhardt gel electrophoresis (Fig. S1), and whole-genome sequencing of MCC70 (GenBank accession number [SRX9131521](https://www.ncbi.nlm.nih.gov/nuccore/SRX9131521)) confirmed loss of pMc1192. To determine whether the loss of pMc1192 and the symbiotic genes it contained affected symbiotic performance, the nodulation and N₂ fixation phenotypes of the two plasmid-cured strains, MCC69 and MCC70, were compared to

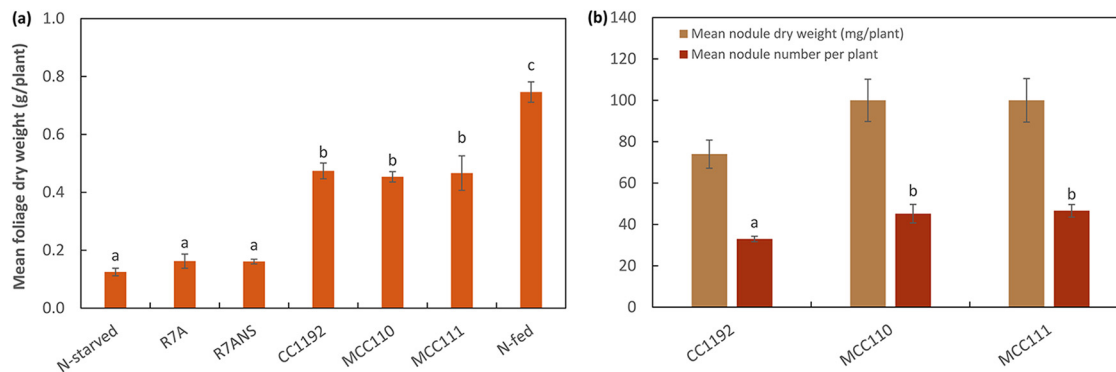


FIG 6 Symbiotic effectiveness of exconjugants of the ICEMcSym¹¹⁹² mobilized into R7ANS (MCC110 and MCC111), compared to wild-type CC1192, R7A (*Mesorhizobium japonicum* strain carrying ICEMjSym^{R7A}), and R7ANS (symbiosis ICE-devoid derivative of R7A), on *C. arietinum* cv. Neelam. (a and b) Mean foliage dry weight (a) and mean dry nodule weight per plant and nodule number of plants (b) grown under nitrogen-limited conditions, inoculated separately with the indicated strains, and grown for 49 days. Uninoculated and N-fed (supplied as KNO₃) plants were included as negative and positive controls, respectively. Treatments are shown with standard errors of the means, and the treatments that share a letter are not significantly different according to the Tukey HSD test ($P \leq 0.05$). A one-way ANOVA detected no significant difference ($P \leq 0.05$) between the treatments for nodule dry weights.

TABLE 1 Acetylene reduction assay of *C. arietinum* cv. Neelam grown for 49 days and inoculated separately with R7ANS (ICEMcSym¹¹⁹²) exconjugant MCC110, MCC111, or CC1192

Strain	Acetylene reduction ^a		
	Per plant (μ mol acetylene reduced/plant/h)	Per nodule (nmol acetylene reduced/nodule/h)	Per nodule mass (nmol acetylene reduced/mg nodule/h)
CC1192	1.020 \pm 0.255	32.2 \pm 9.1	13.4 \pm 2.9
MCC110	0.827 \pm 0.259	18.8 \pm 5.1	7.90 \pm 2.0
MCC111	1.146 \pm 0.082	25.2 \pm 2.6	12.3 \pm 2.1

^aTreatment means \pm standard errors are shown. A one-way ANOVA detected no significant difference ($P \leq 0.05$) between the treatments.

that of the parent strain CC1192 on *C. arietinum* (Fig. 7). At 44 days postinoculation, there was no significant difference ($P \leq 0.05$) among MCC69, MCC70, and CC1192 in either mean shoot dry weight or mean nodule dry weight per plant. Furthermore, pMc1192 was also absent from the genomes of the 11 *Mesorhizobium* strains isolated from field-cultivated *C. arietinum*, indicating that they had not acquired this plasmid. Therefore, although plasmid pMc1192 harbors predicted *fix* genes, they are not essential to support N₂ fixation with *C. arietinum*.

DISCUSSION

We have demonstrated that *Mesorhizobium ciceri* sv. *ciceri* CC1192 harbors a 419-kb monopartite symbiosis ICE, ICEMcSym¹¹⁹², integrated at one of the four Ser-tRNA genes in the CC1192 genome. The ICE is transferable to the ICE-devoid R7ANS recipient, where it integrates into a 20-bp sequence present at the 3' end of the Ser-tRNA gene. Furthermore, the identification of ICEMcSym¹¹⁹² in the genomes of genetically distinct *Mesorhizobium* strains present in *C. arietinum* nodules is consistent with ICEMcSym¹¹⁹² transfer in the field. Although Ser-tRNA had been proposed as the integration site for ICEMcSym¹¹⁹² (40) as well as for 10 other predicted monopartite symbiosis ICEs from *Cicer*-nodulating strains (37), here we have experimentally confirmed this locus as an integration site for symbiosis ICEs. The rate of transfer of ICEMcSym¹¹⁹² to R7A of 1.05×10^{-7} transconjugants per donor is comparable to the ICEMcSym^{R7A} transfer rate in wild-type *M. japonicum* R7A (2.5×10^{-7} transconjugants per donor) (42) but is more than 1 order of magnitude higher than that for the transfer of ICEMcSym¹²⁷¹ from WSM1271 to R7ANS (4.65×10^{-8} transconjugants per donor) (28). The differences in these transfer rates may be related to the monopartite structure of ICEMcSym¹¹⁹² and ICEMcSym^{R7A} and their highly similar complements of ICE regulatory genes, compared to the more complex and intricate control system in the tripartite ICEMcSym¹²⁷¹ (43).

Curing CC1192 of plasmid pMc1192 had no impact on the nodulation or N₂ fixation phenotypes of the resultant strains, and the genomes of the 11 *Mesorhizobium* strains isolated from field-cultivated *C. arietinum* lacked the plasmid. This indicates that the 645 genes, including *fix* genes (*fixNOPQGHIS* and *fixLJK*), carried on pMc1192 are not essential for symbiosis with *C. arietinum*. In several rhizobia, FixNOQP and FixGHI are required for production of a high-O₂-affinity *cbb*₃-type cytochrome oxidase critical for symbiosis, with mutations in these operons either abolishing or greatly reducing rates of N₂ fixation (44–47). Given that *fixNOQP* and *fixGHI* are also present on ICEMcSym¹¹⁹², it is likely that *M. ciceri* CC1192 relies on these ICE-carried genes to fulfil the symbiotic roles of FixNOQP and FixGHI. Although a definitive role for FixS has yet to be reported for N₂-fixing rhizobia, *fixS*/*ccoS* has been shown to be essential for maturation of the microaerobic terminal oxidase *cbb*₃ complex in the photosynthetic purple nonsulfur bacterium *Rhodobacter sphaeroides* (48, 49). Plasmid pMc1192 appears to harbor the sole copy of *fixS* in the CC1192 genome; therefore, either FixS is dispensable for N₂ fixation in this symbiosis or an unidentified gene in CC1192 complements its function. Other *M. ciceri* strains, including *M. ciceri* WSM1271, WSM1284, and WSM1497, have a similar-sized *repABC*-type plasmid in their genomes (40, 50, 51); therefore, it is possible that these replicons may be widely conserved among this species.

The N₂ fixation efficiency of both R7ANS and field-isolated exconjugants harboring ICEMcSym¹¹⁹² was indistinguishable from that of CC1192 on *C. arietinum*. Importantly,

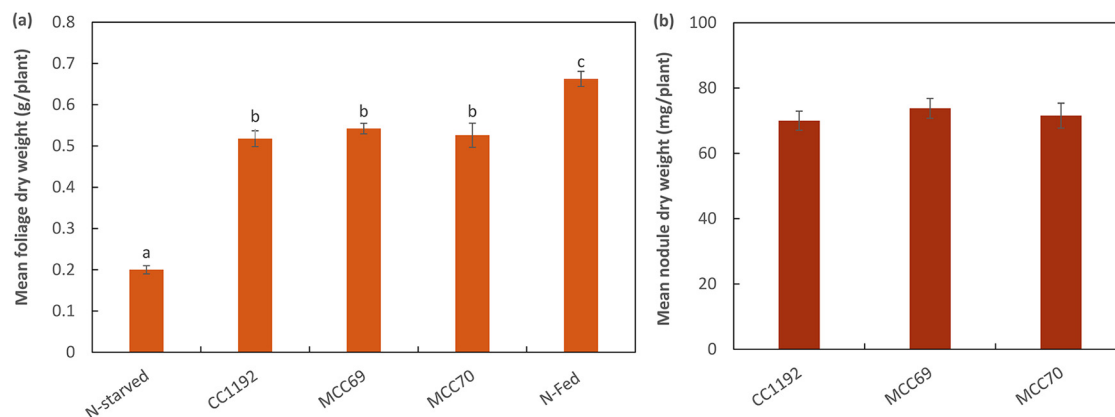


FIG 7 Symbiotic effectiveness of plasmid-cured derivatives of CC1192 (MCC69 and MCC70), compared to CC1192, on *C. arietinum* cv. Neelam. (a and b) Mean foliage dry weight (a) and mean nodule dry weight (b) per plant of *C. arietinum* inoculated separately with the indicated strains and grown free of added nitrogen under controlled glasshouse conditions for 44 days. Uninoculated control plants received no nitrogen (N-starved) or nitrogen as KNO_3 (N-fed), and the roots of these plants were devoid of nodules at harvest. Error bars represent standard errors of the means, and treatments that share a letter are not significantly different, according to the Tukey HSD test ($P \leq 0.05$). A one-way ANOVA detected no significant difference ($P \leq 0.05$) between the treatments for nodule dry weights.

ICEMcSym¹¹⁹² was identified in all field isolates tested, and these 11 strains were distributed across three different clades, based on 16S rRNA and core gene phylogenies, indicating that this ICE can support CC1192 rates of N_2 fixation in a comparatively wide range of *Mesorhizobium* genetic backgrounds. This is in stark contrast to results obtained previously with WSM1271 and WSM1497, in which field-isolated (18, 32) and *in vitro* R7ANS exconjugants of WSM1271 (28) were less effective than the inoculant strains at fixing N_2 with *B. pelecinus*, with some field-isolated strains being completely ineffective (18). Therefore, acquisition of a symbiosis ICE from a *Mesorhizobium* strain can yield novel microsymbionts that are as effective as the inoculant strain at fixing N_2 with host legumes.

Although the 11 *Mesorhizobium* strains isolated from field-cultivated *C. arietinum* showed symbiotic effectiveness equivalent to that of the inoculant strain CC1192, there is evidence that suboptimally effective strains nodulate *C. arietinum* in Australia. In their study of cultivated *C. arietinum* inoculated with CC1192, Elias and Herridge (36) isolated 570 strains from nodules of *C. arietinum* sampled across 26 farms in eastern Australia and found that 86% of strains were not CC1192. Importantly, while most novel strains analyzed were as effective as CC1192 on *C. arietinum*, 41% were suboptimal at fixing N_2 . Although the symbiosis ICE was not identified in those strains, the fact that uninoculated *C. arietinum* sown into fields in Australia without a history of inoculation fails to form effective N_2 -fixing nodules (7) is strong evidence for a lack of compatible preexisting soil organisms capable of fixing N_2 with this legume. Therefore, it is highly likely that the novel *C. arietinum*-nodulating organisms reported by Elias and Herridge (36) are the result of transfer of the CC1192 ICE into recipient soil *Mesorhizobium* spp., as was shown to be the case with the 11 strains analyzed in this work.

The field-isolated recipients of ICEMcSym¹¹⁹² were shown to form three separate clades, some of which may constitute new species of *Mesorhizobium*. Very little is known of the diversity of *Mesorhizobium* soil populations in Australia, with *Bradyrhizobium* spp. most frequently being identified from isolations made from nodules of native legumes (52–55). Only two studies reported the isolation of limited numbers of *Mesorhizobium* strains from some species of Australian native legumes (38, 39), and the 16S rRNA gene sequences of those strains group closely with some of the *C. arietinum* field-isolated strains analyzed in this study. It is possible that the novel *C. arietinum* strains analyzed in this study evolved from the transfer of ICEMcSym¹¹⁹² from CC1192 into *Mesorhizobium* microsymbionts of Australian native legumes, converting them into *C. arietinum* symbionts. However, there is no evidence

for non-ICEMcSym¹¹⁹² symbiosis genes in the genomes of the field isolates, as might be expected if the ICE had integrated into the genome of a preexisting symbiont. This suggests that the recipients of ICEMcSym¹¹⁹² might instead have been nonsymbiotic *Mesorhizobium* saprophytes existing as part of the soil microbiota. In fact, nonsymbiotic *Mesorhizobium* spp. have been isolated from the rhizosphere of *L. corniculatus* growing at two separate field sites in New Zealand (56). It is thus possible that populations of nonsymbiotic *Mesorhizobium* spp. similarly exist in Australian soils and can act as recipients for symbiosis ICE transfer from *Mesorhizobium* inoculant strains.

Why ICE transfer into different *Mesorhizobium* strains sometimes leads to ineffective or poorly effective N₂-fixing microsymbionts, such as for *B. pelecinus* (32, 51, 57, 58), or effective N₂-fixing rhizobia, as presented in this study, is not clear. However, the interaction between expression of ICE and chromosomally carried genes required for symbiosis is likely to play a significant role. The reports of large “naturalized” populations of *Sinorhizobium* and *Rhizobium* strains present in Australian soils (12, 15, 17) may similarly be the result of horizontal transfer of symbiosis plasmids from inoculant strains to native soil bacteria. Determining how these populations of rhizobia have developed is crucial for continuing to harness rhizobium-legume interactions in farming systems to maximize nitrogen inputs and for understanding the selective forces driving evolution of symbiotic N₂ fixation.

MATERIALS AND METHODS

Strains, plasmids, and media. Bacterial strains and plasmids used in this study are detailed in Table 2. *Mesorhizobium* spp. were cultured at 28°C on half-strength Lupin agar (½LA) (59) or tryptone yeast extract (61). For ICE transfer experiments, exconjugants were selected on rhizobium defined medium (RDM) supplemented with 15 mM glucose (G/RDM) (62). *Escherichia coli* was cultured at 37°C on lysogeny broth (63). Where appropriate, antibiotics were supplied in the medium at the following concentrations: for *Mesorhizobium*: neomycin, 250 μg ml⁻¹ for exconjugant selection and 80 μg ml⁻¹ for routine culturing; gentamicin, 40 μg ml⁻¹; tetracycline, 1 μg ml⁻¹; for *E. coli*: kanamycin, 40 μg ml⁻¹; gentamicin, 10 μg ml⁻¹; tetracycline, 10 μg ml⁻¹. Medium for *E. coli* ST18 was also supplemented with 5-aminolevulinic acid at 50 μg ml⁻¹.

Curing pMc1192 from CC1192. Plasmid pMc1192 was cured from *M. ciceri* CC1192 using a plasmid incompatibility approach, by cloning the *repABC* region from pMESCI01 of *M. ciceri* sv. biserrulae WSM1271 into the suicide vector pSacB. RepABC in pMESCI01 shares 100% identity with RepABC in pMc1192. To construct the plasmid-curing vector pMCC6, a 5,274-bp region containing the *repABC* region of pMESCI01 (Mesci_6410-6412) was PCR amplified with primers 13 and 14, containing 5′ BamHI and XbaI tails, and the region was directionally cloned into pSacB, forming pMCC6. Plasmid pMCC6 was then transformed into ST18 and subsequently conjugated into CC1192 in a biparental mating performed in duplicate independently grown cultures of donor and recipient cells. Transconjugants were selected on G/RDM supplemented with neomycin with no added 5-aminolevulinic acid. Loss of plasmid pMc1192 was initially screened by PCR with primer pairs pr1 and pr2, pr3 and pr4, and pr5 and pr6, each designed to amplify approximately 500-bp amplicons in three equidistant regions around pMc1192. Strains that did not yield expected products, consistent with the loss of pMc1192, were cured of pMCC6 by plating on RDM medium supplemented with 5% (wt/vol) sucrose and counterselected for loss of neomycin resistance (carried on pMCC6), producing MCC69 and MCC70, each derived from independent matings of CC1192 and ST18 (pMCC6) cells. To visualize curing of pMc1192, MCC69 and MCC70 were subjected to Eckhardt gel electrophoresis using a modified version of the procedure described previously (64). Briefly, the two plasmid-cured derivatives, MCC69 and MCC70, wild-type CC1192, and the reference strain Rlv3841 were grown in triplicate to optical densities at 600 nm of approximately 0.3, a 200-μl aliquot of culture was then chilled on ice for 10 min before 1 ml of cold 0.3% (wt/vol) *N*-lauryl sarcosine in Tris-borate-EDTA (TBE) buffer was added and mixed by inversion, and the mixture was incubated on ice for an additional 10 min. The mixture was centrifuged (20,000 × *g* for 5 min at 4°C) and aspirated before gentle resuspension in 25 μl lysis solution (0.1 mg ml⁻¹ lysozyme, 10% [wt/vol] sucrose, 10 μg ml⁻¹ RNase A in 1 × TBE). Immediately, 20 μl of the sample was loaded onto 0.75% (wt/vol) agarose with 1% (wt/vol) SDS and left for 30 min to settle before electrophoresis at 70 V for 16 h at 4°C and subsequent UV visualization after staining with ethidium bromide.

In vitro ICE transfer experiments. The ICEMcSym^{R7A}-devoid R7A derivative strain R7ANS harbors the broad-host-range vector pPR3, encoding neomycin resistance, to facilitate selection against neomycin-sensitive ICE-donor strains. R7ANS was mated with CC1192 as described previously (28) except that neomycin was substituted for tetracycline in the selective medium. PCR screening was carried out on a total of 10 exconjugants selected from four independent mating experiments targeting the Ser-tRNA (Meslo_RS0233700) with a 16-bp sequence at its 3′ end identical to the core regions of ICEMcSym¹¹⁹², using primer pairs pr10 and pr11 (binding across the putative *attL* junction of the R7ANS chromosome and ICEMcSym¹¹⁹²) and pr9 and pr12 (binding across the putative *attR* junction) (Table 3). Two of these exconjugants (MCC110 and MCC111) were selected for whole-genome sequencing.

Sequencing, whole-genome assemblies, and alignments. Sanger sequencing of PCR amplicons was performed by the Australian Genome Research Facility. For whole-genome sequencing, genomic

TABLE 2 Strains and plasmids used in this study

Strain or plasmid	Genotype or alternative name ^a	Reference or source
Strains		
CC1192	Wild-type <i>Mesorhizobium ciceri</i> symbiovar <i>ciceri</i> CC1192, harboring ICE/McSym ¹¹⁹²	7
R7A	Wild-type <i>Mesorhizobium japonicum</i> field isolate of ICMP 3153, harboring ICE/MiSym ^{R7A}	30
R7ANS	Nonsymbiotic derivative of R7A; lacking ICE/MiSym ^{R7A} and harboring BHR vector pPR3; Nm ^r	26
MCC69	CC1192 derivative, cured of plasmid pMc1192	This study
MCC70	CC1192 derivative, cured of plasmid pMc1192	This study
MCC110	R7ANS exconjugant carrying ICE/McSym ¹¹⁹² integrated at Ser-tRNA	This study
MCC111	R7ANS exconjugant carrying ICE/McSym ¹¹⁹² integrated at Ser-tRNA	This study
WSM4303	Nat2 from field-cultivated <i>C. arietinum</i> ; <i>Mesorhizobium</i> sp.	36
WSM4304	Nat3 from field-cultivated <i>C. arietinum</i> ; <i>Mesorhizobium</i> sp.	36
WSM4305	Nat4 from field-cultivated <i>C. arietinum</i> ; <i>Mesorhizobium</i> sp.	36
WSM4306	Nat5 from field-cultivated <i>C. arietinum</i> ; <i>Mesorhizobium</i> sp.	36
WSM4307	Nat7 from field-cultivated <i>C. arietinum</i> ; <i>Mesorhizobium</i> sp.	36
WSM4308	Nat8 from field-cultivated <i>C. arietinum</i> ; <i>Mesorhizobium</i> sp.	36
WSM4310	Nat18 from field-cultivated <i>C. arietinum</i> ; <i>Mesorhizobium</i> sp.	36
WSM4311	Nat19 from field-cultivated <i>C. arietinum</i> ; <i>Mesorhizobium</i> sp.	36
WSM4312	Nat20 from field-cultivated <i>C. arietinum</i> ; <i>Mesorhizobium</i> sp.	36
WSM4313	Nat21 from field-cultivated <i>C. arietinum</i> ; <i>Mesorhizobium</i> sp.	36
WSM4315	Nat28 from field-cultivated <i>C. arietinum</i> ; <i>Mesorhizobium</i> sp.	36
Riv3841	Wild-type <i>Rhizobium leguminosarum</i> symbiovar <i>viciae</i> 3841	72
DH5 α	<i>Escherichia coli</i> strain for cloning; F ⁻ ϕ 80lacZ Δ M15 Δ (lacZYA-argF)U169 <i>recA1 endA1 hsdR17</i> (k ⁻ m ⁺) <i>phoA supE44 thi-1 gyrA96 relA1</i>	Invitrogen
ST18	<i>Escherichia coli</i> ; S17-1 Δ <i>hemaA thi pro hsdR M</i> ⁻ with chromosomally integrated RP4-2Tc::Mu::Km ^r ::Tn7 Tra ⁺ Trf ⁺ ; Sm ^r	73
Plasmids		
pJET1.2/Blunt	PCR product cloning vector; Ap ^r	Thermo Fisher Scientific
pHP45-QSmSp	pHP derivative with Ω SmSp cassette; Sm ^r , Sp ^r	74
pJQ2005K	pACYC derivative; P15A origin of replication insertional mutagenesis inactivation vector; Gm ^r , Suc ^s	75
pRK2013	Helper plasmid used for mobilizing plasmids; ColE1 replicon with RK2 <i>tra</i> genes; Km ^r	76
pMCC6	pSacB carrying 5,274-bp <i>repABC</i> region from <i>M. ciceri</i> symbiovar WSM1271	This study
pSacB	BHR vector carrying inducible IPTG promoter and <i>sacB</i> gene; Nm ^r , Suc ^s	28
pPR3	BHR pPROBE-KT carrying <i>nptII</i> promoter from pFAJ1708; Nm ^r	77

^aNm^r, neomycin resistance; BHR, broad host range; Km^r, kanamycin resistance; Sm^r, streptomycin resistance; Ap^r, ampicillin resistance; Sp^r, spectinomycin resistance; Gm^r, gentamicin resistance; Suc^s, sucrose sensitivity; IPTG, isopropyl- β -D-thiogalactopyranoside.

TABLE 3 Primers used in this study

Primer no.	Name	Oligonucleotide sequence (5' to 3')	Replicon specificity or source
pr1	pMc1192-Fa	CGTTCGGACTTGAACCAGGA	pMc1192
pr2	pMc1192-Ra	CCTCAAAGCTGGCATCGAAC	pMc1192
pr3	pMc1192-Fb	GATCAATGGTGCGCGAGAAC	pMc1192
pr4	pMc1192-Rb	CGCTGTTTCGACGGTTTGT	pMc1192
pr5	pMc1192-Fc	TCCCCGAACGAGATTGCAA	pMc1192
pr6	pMc1192-Rc	AAGCGCGATCGACAGATGAT	pMc1192
pr7	CC1192_attB_F	GTTGTCGGGACTGTTGTTGG	CC1192 chromosome
pr8	CC1192_attB_R	TTGGTTTCTCCTCGAAGCGG	CC1192 chromosome
pr9	CC1192_attP_F	GCCGATTGTACAGGCTACT	ICEMcSym ¹¹⁹²
pr10	CC1192_attP_R	CGGACGAGATACCAGATGCC	ICEMcSym ¹¹⁹²
pr11	R7ANS_attB_F	GTTATTGGCCGGCAAAGACC	R7ANS serine
pr12	R7ANS_attB_R	TTTCCGACATACAGCTCAC	R7ANS serine
pr13	RepABC F BamHI	ATCAGGGATCCGTTGACCTCCGCATGCAAAC	This study
pr14	RepABC R XbaI	ATCAGTCTAGAGTCAATCTCACCAGGGCCAG	This study

DNA of plasmid-cured strain MCC69, R7ANS exconjugants MCC110 and MCC111, and field-isolated strains WSM403, WSM4304, WSM4305, WSM4306, WSM4307, WSM4308, WSM4310, WSM4311, WSM4312, WSM4313, and WSM4315 was extracted using a Qiagen blood and tissue DNeasy extraction kit (catalogue number 69054) according to the manufacturer's instructions. Concentration and purity were analyzed with a NanoDrop One spectrophotometer (Thermo Fisher Scientific). Illumina MiSeq 2 × 250-bp paired-end reads (ACCESS Research, Murdoch University) were used to produce draft genomes of all strains. *De novo* genome assemblies were performed using SPAdes v3.10.1 software (65). Illumina sequencer adapter contamination was removed with neonsclip v0.132 (<https://github.com/Victorian-Bioinformatics-Consortium/nesoni>), and reads were corrected using Lighter v1.1.1 (66). Genomes were annotated using Prokka (67). NCBI accession numbers for assembled and annotated genomes can be found in Table S1 in the supplemental material. For whole-genome BLASTN comparisons, BLAST Ring Image Generator (BRIG) v0.9.5 (68) was used to produce BLASTN (options: -ungapped, -word_size 2000, upper and lower threshold 99%) alignments of sequence contigs or scaffolds of R7ANS exconjugant strains or field isolates with the complete genome of CC1192 (40).

Phylogenetic genome analysis was performed with bcgTree (69), which uses a concatenated alignment of 107 core genes conserved across bacterial genera to compare organisms. The tree was constructed using the RAxML (Randomized Axelerated Maximum Likelihood) program (70) with bootstraps set at 100. Phylogenetic and molecular evolutionary analyses of 16S rRNA gene sequences were performed using Geneious v11.1.5 to construct a neighbor-joining tree using the Tamura-Nei method to determine genetic distances with 5,000 replications. Included in the analysis were field-isolated *C. arietinum*-nodulating strains WSM4303, WSM4304, WSM4305, WSM4306, WSM4307, WSM4308, WSM4310, WSM4311, WSM4312, WSM4313, and WSM4315, along with CC1192, a selection of strains used as inoculants for other commercial legume species, *Mesorhizobium* type strains, and strains isolated from native Australian legume species. A list of NCBI gene or genome accession numbers for each strain can be found in Table S2.

Assessment of N₂ fixation with *C. arietinum* and statistical analysis. *Cicer arietinum* cv. Neelam was grown in free-draining sterile sand in a glasshouse maintained at 22°C, as described by Yates et al. (71), where growth of legumes is limited by N deficiency except when they are nodulated by N₂-fixing rhizobia. Briefly, seeds were surface sterilized in 70% ethanol (1 min), followed by 4% NaOCl (3 min), rinsed in six successive washes with sterile deionized water, and imbibed in the final wash for 5 min. Surface sterilized seeds were pregerminated on 0.9% (wt/vol) agar for several days at room temperature until emergence of the radicals and were sown aseptically into 1-liter pots (170 by 80 by 80 mm) containing a coarse sand mixture prepared as described by Yates et al. (71), adjusted to pH 6.5 with a 5 g/liter solution of Fe₂(SO₄)₃ prior to steam sterilizing. Each pot was sown with two seedlings and thinned to one plant per pot upon emergence of shoots.

Cultures of rhizobia were incubated on ½LA plates (59) for 5 days at 28°C, and cells were suspended in 1% (wt/vol) sucrose at 10⁸ cells ml⁻¹. *C. arietinum* treatment pots were either uninoculated (N-starved and N-fed controls) or inoculated separately with 1 ml of the cell suspension, while uninoculated pots received 1 ml of sterile deionized water. All pots were protected from airborne contamination initially by plastic cling film and then by sterile Alkathene beads as described by Yates et al. (71). Each treatment consisted of five replications, which were randomized and maintained with sterile water and CRS plant growth nutrient solution (71) as required. Uninoculated N-fed control treatments received 5 ml of 0.1 M KNO₃ weekly.

Three separate glasshouse experiments were conducted to assess N₂ fixation of strains with *C. arietinum*. The first experiment evaluated the N₂ fixation effectiveness of 11 strains isolated from field-cultivated *C. arietinum* growing in the northern grain belt of eastern Australia in an earlier study by Elias and Herridge (36). These strains (WSM4303, WSM4304, WSM4305, WSM4306, WSM4307, WSM4308, WSM4310, WSM4311, WSM4312, WSM4313, and WSM4315) were shown previously to be different from the inoculant strain CC1192 by 16S rRNA gene sequencing and were isolated from paddock TA17 (near Moree), a site where *C.*

arietinum had not been grown for 10 years. The second experiment measured the effectiveness of R7ANS exconjugant strains MCC110 and MCC111, harboring ICE $McSym^{1192}$, compared with R7A, R7ANS, and wild-type CC1192. The third experiment assessed the symbiotic phenotype of plasmid-cured derivatives of CC1192, compared with the wild-type strain.

To assess N_2 fixation effectiveness of the 11 field isolates and the plasmid-cured derivatives of CC1192, plants were harvested at 49 or 44 days postinoculation, respectively, by carefully removing the roots from the soil and washing the root systems. Nodules were excised from the roots, and plant shoots were separated from the roots at the hypocotyl; both shoots and nodules were then dried at 60°C until they were desiccated prior to weighing. For the R7ANS exconjugant strains, assessment of nitrogenase activity was performed on intact plants prior to shoot and nodule biomass harvesting. Briefly, plants were harvested at 49 days postinoculation by removing them carefully from pots and soil substrate and transferring them to 1,000-ml Duran bottles with silicone septa. A total of 2% (vol/vol) acetylene was added to each bottle, and the rate of acetylene reduction was determined at 20°C as described by Yates and colleagues (71). Initial screening at time points of 1, 2, and 3 h indicated that the acetylene reduction relationship versus time was linear; thereafter, samples were extracted at 2 h. Following the acetylene reduction assay, shoots and roots were harvested as described above. The variance of the means of the dry foliage weights and nodule weights and the various acetylene reduction assay parameters was assessed by performing one-way analysis of variance (ANOVA), and the significant difference between the treatment means was analyzed by the Tukey honestly significant difference (HSD) *post hoc* test at an α value of 0.05 using IBM SPSS Statistics v24.

Data availability. Genome sequences generated in this study are available from NCBI under the following accession numbers: [NZ_VFTE000000000](https://doi.org/10.1093/nar/43/11/5211) (WSM4303), [NZ_NSFX000000000](https://doi.org/10.1093/nar/43/11/5212) (WSM4304), [NZ_VFTD000000000](https://doi.org/10.1093/nar/43/11/5213) (WSM4305), [NZ_VFTC000000000](https://doi.org/10.1093/nar/43/11/5214) (WSM4306), [NZ_VFTB000000000](https://doi.org/10.1093/nar/43/11/5215) (WSM4307), [NZ_NSFW000000000](https://doi.org/10.1093/nar/43/11/5216) (WSM4308), [NZ_VFTA000000000](https://doi.org/10.1093/nar/43/11/5217) (WSM4310), [NZ_NSFV000000000](https://doi.org/10.1093/nar/43/11/5218) (WSM4311), [NZ_NSFU000000000](https://doi.org/10.1093/nar/43/11/5219) (WSM4312), [NZ_NSFT000000000](https://doi.org/10.1093/nar/43/11/5220) (WSM4313), [NZ_VFSZ000000000](https://doi.org/10.1093/nar/43/11/5221) (WSM4315), [JADAMJ000000000](https://doi.org/10.1093/nar/43/11/5222) (MCC110), [JADAMK000000000](https://doi.org/10.1093/nar/43/11/5223) (MCC111), and [SRX9131521](https://doi.org/10.1093/nar/43/11/5224) (MCC70).

SUPPLEMENTAL MATERIAL

Supplemental material is available online only.

SUPPLEMENTAL FILE 1, XLSX file, 0.04 MB.

SUPPLEMENTAL FILE 2, PDF file, 0.2 MB.

ACKNOWLEDGMENTS

This work was supported by funding from the Grains Research and Development Corporation of Australia (grants UMU1810 and UMU1901). J.R. is the recipient of an Australian Research Council Future Fellowship (project FT170100235) funded by the Australian Government.

REFERENCES

- Peoples MB, Brockwell J, Herridge DF, Rochester IJ, Alves BJR, Urquiaga S, Boddey RM, Dakora FD, Bhattarai S, Maskey SL, Sampet C, Rerkasem B, Khan DF, Hauggaard-Nielsen H, Jensen ES. 2009. The contributions of nitrogen-fixing crop legumes to the productivity of agricultural systems. *Symbiosis* 48:1–17. <https://doi.org/10.1007/BF03179980>.
- Herridge DF, Peoples MB, Boddey RM. 2008. Global inputs of biological nitrogen fixation in agricultural systems. *Plant Soil* 311:1–18. <https://doi.org/10.1007/s11104-008-9668-3>.
- Vanlauwe B, Hungria M, Kanampiu F, Giller KE. 2019. The role of legumes in the sustainable intensification of African smallholder agriculture: lessons learnt and challenges for the future. *Agr Ecosys Environ* 284:106583. <https://doi.org/10.1016/j.agee.2019.106583>.
- Davidson BR, Davidson HF. 1993. Legumes, the Australian experience: the botany, ecology and agriculture of indigenous and immigrant legumes. Research Studies Press Ltd., Taunton, England.
- Nichols PGH, Revell CK, Humphries AW, Howie JH, Hall EJ, Sandral GA, Ghamkhar K, Harris CA. 2012. Temperate pasture legumes in Australia: their history, current use, and future prospects. *Crop Pasture Sci* 63:691–725. <https://doi.org/10.1071/CP12194>.
- Lange RT. 1961. Nodule bacteria associated with the indigenous Leguminosae of south-western Australia. *J Gen Microbiol* 26:351–359. <https://doi.org/10.1099/00221287-26-2-351>.
- Corbin E, Brockwell J, Gault R. 1977. Nodulation studies on chickpea (*Cicer arietinum*). *Aust J Exp Agric* 17:126–134. <https://doi.org/10.1071/EA9770126>.
- Howieson JG, Ewing MA, D'Antuono MF. 1988. Selection for acid tolerance in *Rhizobium meliloti*. *Plant Soil* 105:179–188. <https://doi.org/10.1007/BF02376781>.
- Howieson J, Loi A, Carr SJ. 1995. *Biserrula pelecinus* L.: a legume pasture species with potential for acid, duplex soils which is nodulated by unique root-nodule bacteria. *Aust J Agric Res* 46:997–1009. <https://doi.org/10.1071/AR950997>.
- Demezas DH, Reardon TB, Strain SR, Watson JM, Gibson AH. 1995. Diversity and genetic structure of a natural population of *Rhizobium leguminosarum* bv. trifolii isolated from *Trifolium subterraneum* L. *Mol Ecol* 4:209–220. <https://doi.org/10.1111/j.1365-294X.1995.tb00210.x>.
- Hebb M, Richardson AE, Reid R, Brockwell J. 1998. PCR as an ecological tool to determine the establishment and persistence of *Rhizobium* strains introduced into the field as seed inoculant. *Aust J Agric Res* 49:923–934. <https://doi.org/10.1071/A98007>.
- Ballard RA, Charman N, McInnes A, Davidson JA. 2004. Size, symbiotic effectiveness and genetic diversity of field pea rhizobia (*Rhizobium leguminosarum* bv. viciae) populations in South Australian soils. *Soil Biol Biochem* 36:1347–1355. <https://doi.org/10.1016/j.soilbio.2004.04.016>.
- Stepkowski T, Moulin L, Krzyżńska A, McInnes A, Law IJ, Howieson J. 2005. European origin of *Bradyrhizobium* populations infecting lupinus and *Serradella* in soils of Western Australia and South Africa. *Appl Environ Microbiol* 71:7041–7052. <https://doi.org/10.1128/AEM.71.11.7041-7052.2005>.
- Ballard RA, Charman N. 2000. Nodulation and growth of pasture legumes with naturalised soil rhizobia. 1. *Aust J Exp Agric* 40:939–948. <https://doi.org/10.1071/EA99112>.
- Drew EA, Charman N, Dingemans R, Hall E, Ballard RA. 2011. Symbiotic performance of Mediterranean *Trifolium* spp. with naturalised soil rhizobia. *Crop Pasture Sci* 62:903–913. <https://doi.org/10.1071/CP11047>.
- Gerding M, Howieson JG, O'Hara GW, Real D, Bräu L. 2013. Establishment and survival of the South African legume *Lessertia* spp. and rhizobia in

- Western Australian agricultural systems. *Plant Soil* 370:235–249. <https://doi.org/10.1007/s11104-013-1632-1>.
17. Gerding M, O'Hara GW, Howieson JG, Bräu L. 2014. Overcoming non-selective nodulation of *Lessertia* by soil-borne rhizobium in the presence of inoculant mesorhizobium. *Plant Soil* 380:117–132. <https://doi.org/10.1007/s11104-014-2081-1>.
 18. Nandasena KG, O'Hara GW, Tiwari RP, Sezmiş E, Howieson JG. 2007. *In situ* lateral transfer of symbiosis islands results in rapid evolution of diverse competitive strains of mesorhizobia suboptimal in symbiotic nitrogen fixation on the pasture legume *Biserrula pelecinus* L. *Environ Microbiol* 9:2496–2511. <https://doi.org/10.1111/j.1462-2920.2007.01368.x>.
 19. Mirkin BG, Fenner TI, Galperin MY, Koonin EV. 2003. Algorithms for computing parsimonious evolutionary scenarios for genome evolution, the last universal common ancestor and dominance of horizontal gene transfer in the evolution of prokaryotes. *BMC Evol Biol* 3:2. <https://doi.org/10.1186/1471-2148-3-2>.
 20. Polz MF, Alm EJ, Hanage WP. 2013. Horizontal gene transfer and the evolution of bacterial and archaeal population structure. *Trends Genet* 29:170–175. <https://doi.org/10.1016/j.tig.2012.12.006>.
 21. Kloesges T, Popa O, Martin W, Dagan T. 2011. Networks of gene sharing among 329 proteobacterial genomes reveal differences in lateral gene transfer frequency at different phylogenetic depths. *Mol Biol Evol* 28:1057–1074. <https://doi.org/10.1093/molbev/msq297>.
 22. Perret X, Staehelin C, Broughton W. 2000. Molecular basis of symbiotic promiscuity. *Microbiol Mol Biol Rev* 64:180–201. <https://doi.org/10.1128/mmb.64.1.180-201.2000>.
 23. Rubio LM, Ludden PW. 2008. Biosynthesis of the iron-molybdenum cofactor of nitrogenase. *Annu Rev Microbiol* 62:93–111. <https://doi.org/10.1146/annurev.micro.62.081307.162737>.
 24. Remigi P, Zhu J, Young JPW, Masson-Boivin C. 2016. Symbiosis within symbiosis: evolving nitrogen-fixing legume symbionts. *Trends Microbiol* 24:63–75. <https://doi.org/10.1016/j.tim.2015.10.007>.
 25. Poole P, Ramachandran V, Terpolilli J. 2018. Rhizobia: from saprophytes to endosymbionts. *Nat Rev Microbiol* 16:291–303. <https://doi.org/10.1038/nrmicro.2017.171>.
 26. Ramsay JP, Sullivan JT, Stuart GS, Lamont IL, Ronson CW. 2006. Excision and transfer of the *Mesorhizobium loti* R7A symbiosis island requires an integrase IntS, a novel recombination directionality factor RdfS, and a putative relaxase RlxS. *Mol Microbiol* 62:723–734. <https://doi.org/10.1111/j.1365-2958.2006.05396.x>.
 27. Sullivan JT, Ronson CW. 1998. Evolution of rhizobia by acquisition of a 500-kb symbiosis island that integrates into a *phe*-tRNA gene. *Proc Natl Acad Sci U S A* 95:5145–5149. <https://doi.org/10.1073/pnas.95.9.5145>.
 28. Haskett TL, Terpolilli JJ, Bekuma A, O'Hara GW, Sullivan JT, Wang P, Ronson CW, Ramsay JP. 2016. Assembly and transfer of tripartite integrative and conjugative genetic elements. *Proc Natl Acad Sci U S A* 113:12268–12273. <https://doi.org/10.1073/pnas.1613358113>.
 29. Sullivan JT, Trzebiatowski JR, Cruickshank RW, Gouzy J, Brown SD, Elliot RM, Fleetwood DJ, McCallum NG, Rossbach U, Stuart GS, Weaver JE, Webby RJ, De Bruijn FJ, Ronson CW. 2002. Comparative sequence analysis of the symbiosis island of *Mesorhizobium loti* strain R7A. *J Bacteriol* 184:3086–3095. <https://doi.org/10.1128/jb.184.11.3086-3095.2002>.
 30. Sullivan JT, Patrick HN, Lowther WL, Scott DB, Ronson CW. 1995. Nodulating strains of *Rhizobium loti* arise through chromosomal symbiotic gene transfer in the environment. *Proc Natl Acad Sci U S A* 92:8985–8989. <https://doi.org/10.1073/pnas.92.19.8985>.
 31. Ramsay J, Ronson CW. 2015. Genetic regulation of symbiosis island transfer in *Mesorhizobium loti*, p 217–224. In De Bruijn FJ (ed), *Biological nitrogen fixation*. John Wiley and Sons, New York, NY. <https://doi.org/10.1002/9781119053095.ch21>.
 32. Nandasena KG, O'Hara GW, Tiwari RP, Howieson JG. 2006. Rapid *in situ* evolution of nodulating strains for *Biserrula pelecinus* L. through lateral transfer of a symbiosis island from the original mesorhizobial inoculant. *Appl Environ Microbiol* 72:7365–7367. <https://doi.org/10.1128/AEM.00889-06>.
 33. Food and Agriculture Organization. 2020. FAOSTAT: crops, v15/6/20. <http://www.fao.org/faostat/en/#data/QC>.
 34. Laranjo M, Alexandre A, Oliveira S. 2014. Legume growth-promoting rhizobia: an overview on the *Mesorhizobium* genus. *Microbiol Res* 169:2–17. <https://doi.org/10.1016/j.micres.2013.09.012>.
 35. Bullard GK, Roughley RJ, Pulsford DJ. 2005. The legume inoculant industry and inoculant quality control in Australia: 1953–2003. *Aust J Exp Agric* 45:127–140. <https://doi.org/10.1071/EA03159>.
 36. Elias NV, Herridge DF. 2015. Naturalised populations of mesorhizobia in chickpea (*Cicer arietinum* L.) cropping soils: effects on nodule occupancy and productivity of commercial chickpea. *Plant Soil* 387:233–249. <https://doi.org/10.1007/s11104-014-2298-z>.
 37. Greenlon A, Chang PL, Damte ZM, Muleta A, Carrasquilla-Garcia N, Kim D, Nguyen HP, Suryawanshi V, Krieg CP, Yadav SK, Patel JS, Mukherjee A, Udupa S, Benjelloun I, Thami-Alami I, Yasin M, Patil B, Singh S, Sarma BK, von Wettberg EJB, Kahraman A, Bukun B, Assefa F, Tesfaye K, Fikre A, Cook DR. 2019. Global-level population genomics reveals differential effects of geography and phylogeny on horizontal gene transfer in soil bacteria. *Proc Natl Acad Sci U S A* 116:15200–15209. <https://doi.org/10.1073/pnas.1900056116>.
 38. Lafay B, Burdon JJ. 1998. Molecular diversity of rhizobia occurring on native shrubby legumes in southeastern Australia. *Appl Environ Microbiol* 64:3989–3997. <https://doi.org/10.1128/AEM.64.10.3989-3997.1998>.
 39. Hoque MS, Broadhurst LM, Thrall PH. 2011. Genetic characterization of root-nodule bacteria associated with *Acacia salicina* and *A. stenophylla* (Mimosaceae) across south-eastern Australia. *Int J Syst Evol Microbiol* 61:299–309. <https://doi.org/10.1099/ijs.0.021014-0>.
 40. Haskett T, Wang P, Ramsay J, O'Hara G, Reeve W, Howieson J, Terpolilli J. 2016. Complete genome sequence of *Mesorhizobium ciceri* strain CC1192, an efficient nitrogen-fixing microsymbiont of *Cicer arietinum*. *Genome Announc* 4:e00516-16. <https://doi.org/10.1128/genomeA.00516-16>.
 41. Cabanes D, Boistard P, Batut J. 2000. Identification of *Sinorhizobium meliloti* genes regulated during symbiosis. *J Bacteriol* 182:3632–3637. <https://doi.org/10.1128/jb.182.13.3632-3637.2000>.
 42. Ramsay JP, Major AS, Komarovskiy VM, Sullivan JT, Dy RL, Hynes MF, Salmond GPC, Ronson CW. 2013. A widely conserved molecular switch controls quorum sensing and symbiosis island transfer in *Mesorhizobium loti* through expression of a novel antiactivator. *Mol Microbiol* 87:1–13. <https://doi.org/10.1111/mmi.12079>.
 43. Haskett TL, Terpolilli JJ, Ramachandran VK, Verdonk CJ, Poole PS, O'Hara GW, Ramsay JP. 2018. Sequential induction of three recombination directionality factors directs assembly of tripartite integrative and conjugative elements. *PLoS Genet* 14:e1007292. <https://doi.org/10.1371/journal.pgen.1007292>.
 44. Preisig O, Zufferey R, Hennecke H. 1996. The *Bradyrhizobium japonicum* *fixGHIS* genes are required for the formation of the high-affinity *cbb₃*-type cytochrome oxidase. *Arch Microbiol* 165:297–305. <https://doi.org/10.1007/s002030050330>.
 45. Preisig O, Zufferey R, Thöny-Meyer L, Appleby CA, Hennecke H. 1996. A high-affinity *cbb₃*-type cytochrome oxidase terminates the symbiosis-specific respiratory chain of *Bradyrhizobium japonicum*. *J Bacteriol* 178:1532–1538. <https://doi.org/10.1128/jb.178.6.1532-1538.1996>.
 46. Kahn D, David M, Domergue O, Daveran ML, Ghai J, Hirsch PR, Batut J. 1989. *Rhizobium meliloti* *fixGHI* sequence predicts involvement of a specific cation pump in symbiotic nitrogen fixation. *J Bacteriol* 171:929–939. <https://doi.org/10.1128/jb.171.2.929-939.1989>.
 47. Mandon K, Kaminski PA, Mougél C, Desnoues N, Dreyfus B, Elmerich C. 1993. Role of the *fixGHI* region of *Azorhizobium caulinodans* in free-living and symbiotic nitrogen fixation. *FEMS Microbiol Lett* 114:185–189. <https://doi.org/10.1111/j.1574-6968.1993.tb06571.x>.
 48. Roh JH, Kaplan S. 2000. Genetic and phenotypic analyses of the *rdx* locus of *Rhodobacter sphaeroides* 2.4.1. *J Bacteriol* 182:3475–3481. <https://doi.org/10.1128/jb.182.12.3475-3481.2000>.
 49. Koch H-G, Winterstein C, Saribas AS, Alben JO, Daldal F. 2000. Roles of the *ccoGHIS* gene products in the biogenesis of the *cbb₃*-type cytochrome c oxidase. *J Mol Biol* 297:49–65. <https://doi.org/10.1006/jmbi.2000.3555>.
 50. Brewer RJM, Haskett TL, Ramsay JP, O'Hara GW, Terpolilli JJ. 2017. Complete genome sequence of *Mesorhizobium ciceri* bv. *biserrulae* WSM1497, an efficient nitrogen-fixing microsymbiont of the forage legume *Biserrula pelecinus*. *Genome Announc* 5:e00902-17. <https://doi.org/10.1128/genomeA.00902-17>.
 51. Nandasena K, Yates R, Tiwari R, O'Hara G, Howieson J, Ninawi M, Chertkov O, Detter C, Tapia R, Han S, Woyke T, Pitluck S, Nolan M, Land M, Liolios K, Pati A, Copeland A, Kyrpidis N, Ivanova N, Goodwin L, Meenakshi U, Reeve W. 2014. Complete genome sequence of *Mesorhizobium ciceri* bv. *biserrulae* type strain (WSM1271^T). *Stand Genomic Sci* 9:462–472. <https://doi.org/10.4056/signs.4458283>.
 52. Lafay B, Burdon JJ. 2001. Small-subunit rRNA genotyping of rhizobia nodulating Australian *Acacia* spp. *Appl Environ Microbiol* 67:396–402. <https://doi.org/10.1128/AEM.67.1.396-402.2001>.
 53. Lafay B, Burdon JJ. 2007. Molecular diversity of legume root-nodule bacteria in Kakadu National Park, Northern Territory, Australia. *PLoS One* 2:e277. <https://doi.org/10.1371/journal.pone.0000277>.
 54. Thrall PH, Burdon JJ, Woods MJ. 2000. Variation in the effectiveness of

- symbiotic associations between native rhizobia and temperate Australian legumes: interactions within and between genera. *J Appl Ecol* 37:52–65. <https://doi.org/10.1046/j.1365-2664.2000.00470.x>.
55. Marsudi NDS, Glenn AR, Dilworth MJ. 1999. Identification and characterization of fast- and slow-growing root nodule bacteria from South-Western Australian soils able to nodulate *Acacia saligna*. *Soil Biol Biochem* 31:1229–1238. [https://doi.org/10.1016/S0038-0717\(99\)00032-2](https://doi.org/10.1016/S0038-0717(99)00032-2).
 56. Sullivan JT, Eardly BD, van Berkum P, Ronson CW. 1996. Four unnamed species of nonsymbiotic rhizobia isolated from the rhizosphere of *Lotus corniculatus*. *Appl Environ Microbiol* 62:2818–2825. <https://doi.org/10.1128/AEM.62.8.2818-2825.1996>.
 57. Reeve W, Nandasena K, Yates R, Tiwari R, Hara G, Ninawi M, Gu W, Goodwin L, Detter C, Tapia R, Han C, Copeland A, Liolios K, Chen A, Markowitz V, Pati A, Mavromatis K, Woyke T, Kyrpides N, Ivanova N, Howieson J. 2013. Complete genome sequence of *Mesorhizobium australicum* type strain WSM2073^T. *Stand Genomic Sci* 9:410–419. <https://doi.org/10.4056/signs.4568282>.
 58. Reeve W, Nandasena K, Yates R, Tiwari R, O'Hara G, Ninawi M, Chertkov O, Goodwin L, Bruce D, Detter C, Tapia R, Han S, Woyke T, Pitluck S, Nolan M, Land M, Copeland A, Liolios K, Pati A, Mavromatis K, Markowitz V, Kyrpides N, Ivanova N, Goodwin L, Meenakshi U, Howieson J. 2013. Complete genome sequence of *Mesorhizobium opportunistum* type strain WSM2075^T. *Stand Genomic Sci* 9:294–303. <https://doi.org/10.4056/signs.4538264>.
 59. Hungria M, O'Hara GW, Zilli JE, Araujo RS, Deaker R, Howieson JG. 2016. Isolation and growth of rhizobia, p 39–60. In Howieson JG, Dilworth MJ (ed), *Working with rhizobia*. Australian Centre for International Agricultural Research, Canberra, Australia.
 60. Howieson JG, Ballard R. 2004. Optimising the legume symbiosis in stressful and competitive environments within southern Australia—some contemporary thoughts. *Soil Biol Biochem* 36:1261–1273. <https://doi.org/10.1016/j.soilbio.2004.04.008>.
 61. Beringer JE. 1974. R factor transfer in *Rhizobium leguminosarum*. *J Gen Microbiol* 84:188–198. <https://doi.org/10.1099/00221287-84-1-188>.
 62. Ronson CW, Primrose SB. 1979. Carbohydrate metabolism in *Rhizobium trifolii*: identification and symbiotic properties of mutants. *J Gen Microbiol* 112:77–88. <https://doi.org/10.1099/00221287-112-1-77>.
 63. Bertani G. 1951. Studies on lysogeny. I. The mode of phage liberation by lysogenic *Escherichia coli*. *J Bacteriol* 62:293–300. <https://doi.org/10.1128/JB.62.3.293-300.1951>.
 64. Eckhardt T. 1978. A rapid method for the identification of plasmid deoxyribonucleic acid in bacteria. *Plasmid* 1:584–588. [https://doi.org/10.1016/0147-619x\(78\)90016-1](https://doi.org/10.1016/0147-619x(78)90016-1).
 65. Bankevich A, Nurk S, Antipov D, Gurevich AA, Dvorkin M, Kulikov AS, Lesin VM, Nikolenko SI, Pham S, Prjibelski AD, Pyshkin AV, Sirotkin AV, Vyahhi N, Tesler G, Alekseyev MA, Pevzner PA. 2012. SPAdes: a new genome assembly algorithm and its applications to single-cell sequencing. *J Comput Biol* 19:455–477. <https://doi.org/10.1089/cmb.2012.0021>.
 66. Song L, Florea L, Langmead B. 2014. Lighter: fast and memory-efficient sequencing error correction without counting. *Genome Biol* 15:509. <https://doi.org/10.1186/s13059-014-0509-9>.
 67. Seemann T. 2014. Prokka: rapid prokaryotic genome annotation. *Bioinformatics* 30:2068–2069. <https://doi.org/10.1093/bioinformatics/btu153>.
 68. Alikhan N-F, Petty NK, Ben Zakour NL, Beatson SA. 2011. BLAST Ring Image Generator (BRIG): simple prokaryote genome comparisons. *BMC Genomics* 12:402. <https://doi.org/10.1186/1471-2164-12-402>.
 69. Ankenbrand MJ, Keller A. 2016. bcgTree: automatized phylogenetic tree building from bacterial core genomes. *Genome* 59:783–791. <https://doi.org/10.1139/gen-2015-0175>.
 70. Stamatakis A. 2014. RAxML version 8: a tool for phylogenetic analysis and post-analysis of large phylogenies. *Bioinformatics* 30:1312–1313. <https://doi.org/10.1093/bioinformatics/btu033>.
 71. Yates RJ, Howieson JG, Hungria M, Bala A, O'Hara GW, Terpolilli JJ. 2016. Authentication of rhizobia and assessment of the legume symbiosis in controlled plant growth systems, p 73–108. In Howieson JG, Dilworth MJ (ed), *Working with rhizobia*. Australian Centre for International Agricultural Research, Canberra, Australia.
 72. Johnston AWB, Beringer JE. 1975. Identification of the *Rhizobium* strains in pea root nodules using genetic markers. *J Gen Microbiol* 87:343–350. <https://doi.org/10.1099/00221287-87-2-343>.
 73. Thoma S, Schobert M. 2009. An improved *Escherichia coli* donor strain for diparental mating. *FEMS Microbiol Lett* 294:127–132. <https://doi.org/10.1111/j.1574-6968.2009.01556.x>.
 74. Prentki P, Krisch HM. 1984. In vitro insertional mutagenesis with a selectable DNA fragment. *Gene* 29:303–313. [https://doi.org/10.1016/0378-1119\(84\)90059-3](https://doi.org/10.1016/0378-1119(84)90059-3).
 75. Quandt J, Hynes MF. 1993. Versatile suicide vectors which allow direct selection for gene replacement in Gram-negative bacteria. *Gene* 127:15–21. [https://doi.org/10.1016/0378-1119\(93\)90611-6](https://doi.org/10.1016/0378-1119(93)90611-6).
 76. Figurski DH, Helinski DR. 1979. Replication of an origin-containing derivative of plasmid RK2 dependent on a plasmid function provided in trans. *Proc Natl Acad Sci U S A* 76:1648–1652. <https://doi.org/10.1073/pnas.76.4.1648>.
 77. Rodpohong P, Sullivan JT, Songsrirote K, Sumpton D, Cheung K-T, Thomas-Oates J, Radutoiu S, Stougaard J, Ronson CW. 2009. Nodulation gene mutants of *Mesorhizobium loti* R7A: *nodZ* and *nodL* mutants have host-specific phenotypes on *Lotus* spp. *Mol Plant Microbe Interact* 22:1546–1554. <https://doi.org/10.1094/MPMI-22-12-1546>.